

Austin-Bergstrom International Airport

Aviation Activity Report

Calendar Year 2016 vs 2015

	10/2016	10/2015	Percent Change	01/2016 - 10/2016	01/2015 - 10/2015	Percent Change
Passenger Activity						
Domestic Enplaned Revenue	533,081	503,697	5.83	4,943,243	4,709,753	4.96
Domestic Deplaned Revenue	529,815	505,216	4.87	4,941,877	4,707,058	4.99
International Enplaned Revenue	6,333	6,384	-0.80	91,105	91,121	-0.02
International Deplaned Revenue	7,017	6,405	9.56	97,716	91,817	6.42
Domestic Enplaned Non-Revenue	10,621	9,453	12.36	110,713	107,464	3.02
Domestic Deplaned Non-Revenue	10,055	9,409	6.87	110,777	104,734	5.77
International Enplaned Non-Revenue	49	69	-28.99	785	749	4.81
International Deplaned Non-Revenue	63	85	-25.88	802	694	15.56
Intl Enplaned Pre-Cleared Revenue	2,014	1,492	34.99	16,369	7,899	107.23
Intl Deplaned Pre-Cleared Revenue	2,198	1,935	13.59	18,290	9,828	86.10
Intl Enplaned Pre-Cleared Non-Revenue	20	310	-93.55	258	407	-36.61
Intl Deplaned Pre-Cleared Non-Revenue	18	292	-93.84	280	409	-31.54
Passenger Totals	1,101,284	1,044,747	5.41	10,332,215	9,831,933	5.09
<i>Enplaned Passenger Totals</i>	<i>552,118</i>	<i>521,405</i>	<i>5.89</i>	<i>5,162,473</i>	<i>4,917,393</i>	<i>4.98</i>
<i>Deplaned Passenger Totals</i>	<i>549,166</i>	<i>523,342</i>	<i>4.93</i>	<i>5,169,742</i>	<i>4,914,540</i>	<i>5.19</i>
<i>Domestic Passenger Totals</i>	<i>1,083,572</i>	<i>1,027,775</i>	<i>5.43</i>	<i>10,106,610</i>	<i>9,629,009</i>	<i>4.96</i>
<i>International Passenger Totals</i>	<i>17,712</i>	<i>16,972</i>	<i>4.36</i>	<i>225,605</i>	<i>202,924</i>	<i>11.18</i>

CURRENT PASSENGER RECORD = 1,165,811 RECORD SET = JULY 2015

Aircraft Operations

Air Carrier	9,612	9,705	-0.96	94,562	94,573	-0.01
Commuter & Air Taxi	1,507	1,392	8.26	13,662	12,711	7.48
Military	911	1,012	-9.98	9,010	7,426	21.33
General Aviation						
Itinerant	5,085	4,944	2.85	41,238	41,920	-1.63
Local	278	500	-44.40	2,244	3,429	-34.56
Total G.A.	5,363	5,444	-1.49	43,482	45,349	-4.12
Total Operations	17,393	17,553	-0.91	160,716	160,059	0.41

Austin-Bergstrom International Airport

Aviation Activity Report

Calendar Year 2016 vs 2015

	10/2016	10/2015	Percent Change	01/2016 - 10/2016	01/2015 - 10/2015	Percent Change
<u>Cargo Activity</u>						
Mail						
Domestic Enplaned Mail	153,359	268,781	-42.94	1,324,797	2,163,714	-38.77
Domestic Deplaned Mail	322,353	316,927	1.71	2,384,074	3,040,689	-21.59
International Enplaned Mail	0	0	0.00	0	0	0.00
International Deplaned Mail	0	0	0.00	2	0	0.00
Mail Totals	475,712	585,708	-18.78	3,708,873	5,204,403	-28.74
Cargo						
Domestic Enplaned Cargo	5,132,008	5,716,156	-10.22	51,466,431	52,590,128	-2.14
Domestic Deplaned Cargo	7,610,130	5,552,801	37.05	65,431,696	50,054,939	30.72
International Enplaned Cargo	1,698,107	1,758,776	-3.45	5,062,747	6,068,497	-16.57
International Deplaned Cargo	579,758	1,400,123	-58.59	3,935,605	4,956,385	-20.60
Cargo Totals	15,020,003	14,427,856	4.10	125,896,479	113,669,949	10.76
Belly Freight						
Domestic Enplaned Belly Freight	258,811	235,984	9.67	2,397,495	2,519,045	-4.83
Domestic Deplaned Belly Freight	432,881	445,866	-2.91	4,616,769	4,753,078	-2.87
International Enplaned Belly Freight	49,903	114,690	-56.49	1,385,969	2,613,484	-46.97
International Deplaned Belly Freight	617,472	308,407	100.21	5,067,633	3,548,324	42.82
Belly Freight Totals	1,359,067	1,104,947	23.00	13,467,866	13,433,931	0.25
Cargo Totals (Mail, Cargo, Belly Freight)	16,854,782	16,118,511	4.57	143,073,218	132,308,283	8.14
<i>Enplaned Cargo Totals</i>	<i>7,292,188</i>	<i>8,094,387</i>	<i>-9.91</i>	<i>61,637,439</i>	<i>65,954,868</i>	<i>-6.55</i>
<i>Deplaned Cargo Totals</i>	<i>9,562,594</i>	<i>8,024,124</i>	<i>19.17</i>	<i>81,435,779</i>	<i>66,353,415</i>	<i>22.73</i>
<i>Domestic Cargo Totals</i>	<i>13,909,542</i>	<i>12,536,515</i>	<i>10.95</i>	<i>127,621,262</i>	<i>115,121,593</i>	<i>10.86</i>
<i>International Cargo Totals</i>	<i>2,945,240</i>	<i>3,581,996</i>	<i>-17.78</i>	<i>15,451,956</i>	<i>17,186,690</i>	<i>-10.09</i>

CURRENT CARGO RECORD = 40,215,518

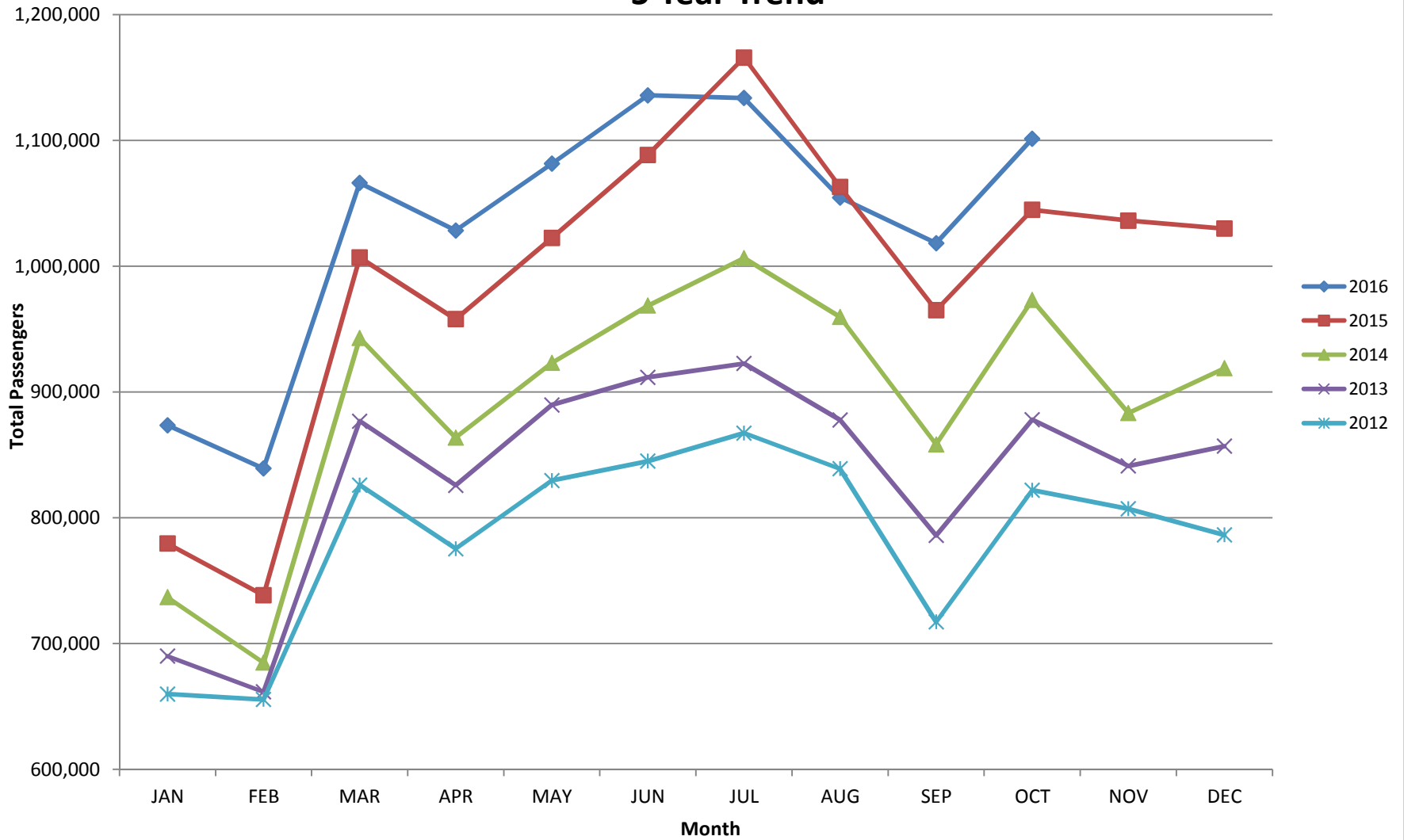
RECORD SET = MARCH 2001

AUS – Airline Codes
October 2016

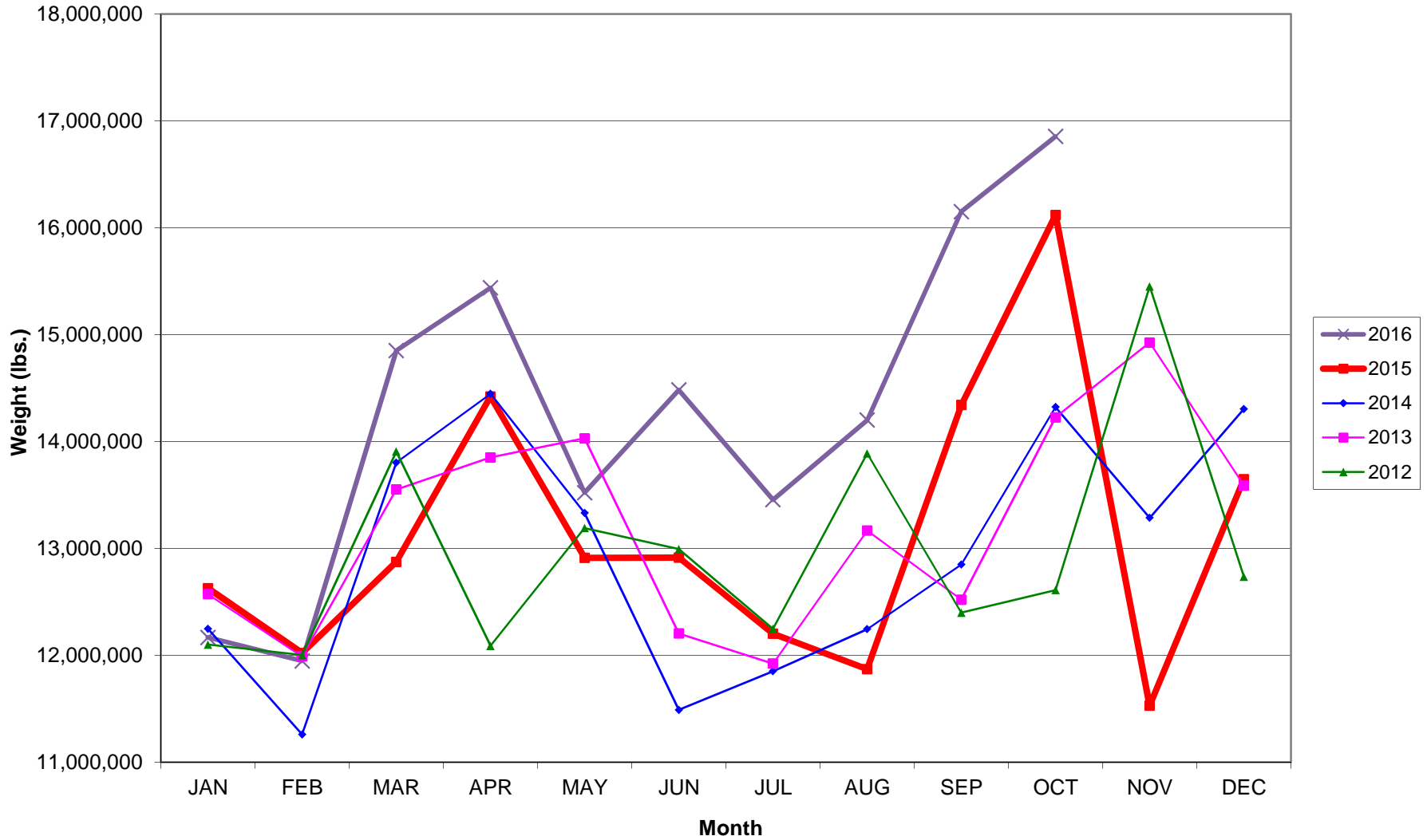
<u>Code</u>	<u>Carrier</u>
AC	Air Canada
AS	Alaska Airlines, Inc.
G4	Allegiant Air, LLC
AA	American Airlines, Inc.
BA	British Airways Plc
DL	Delta Airlines
F9	Frontier Airlines
B6	JetBlue Airways Corp.
P1	Public Charters, Inc. dba Texas Sky
WN	Southwest Airlines
SY	Sun Country Airlines/ MN Airlines, LLC
UA	United Airlines, Inc.
VX	Virgin America Inc.
Y4	Volaris/Concesionaria Vuela Compañía de Aviación, S.A.P.I. de C.V.
XP	Xtra Airways

AUSTIN PASSENGER TRAFFIC

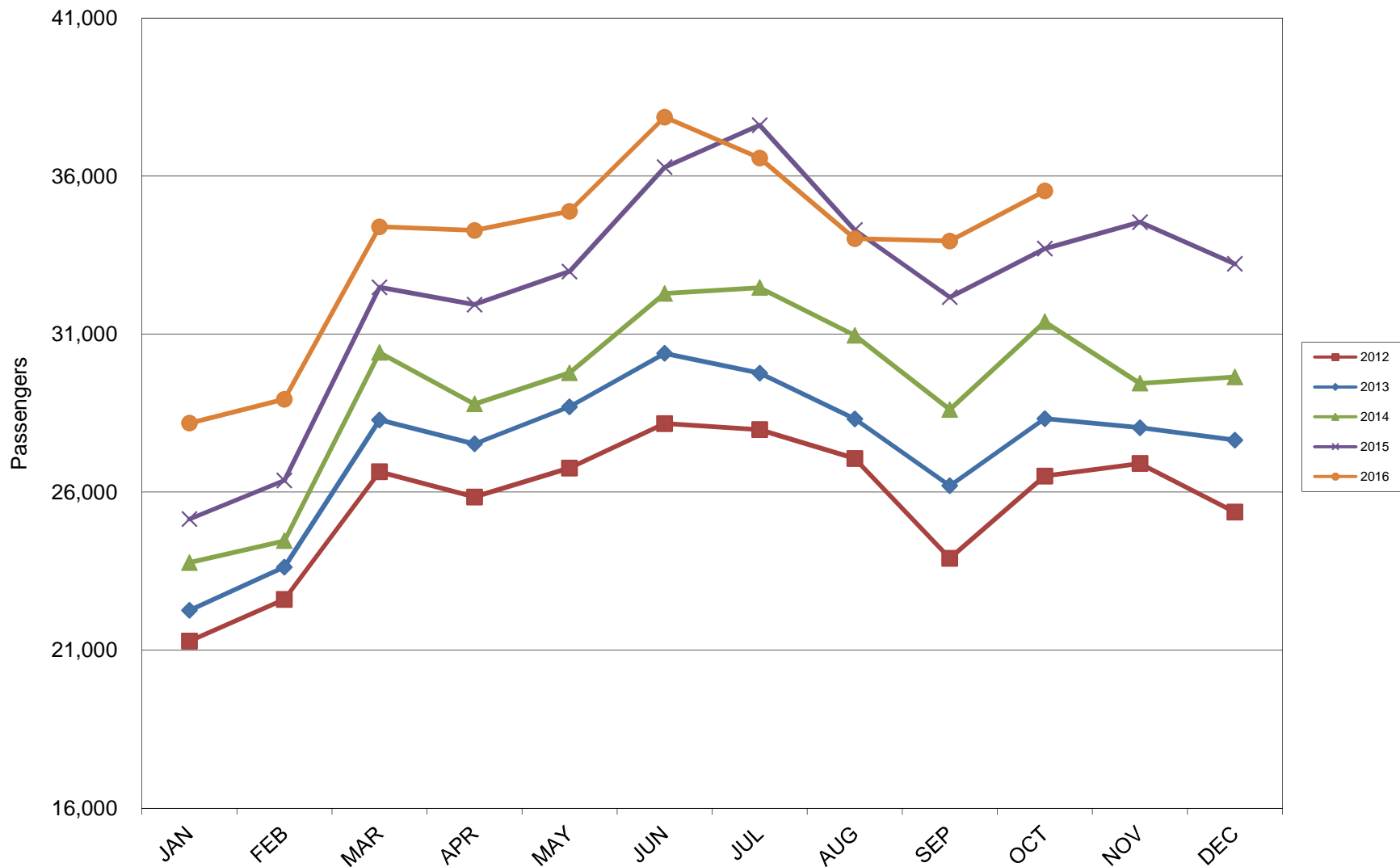
5 Year Trend



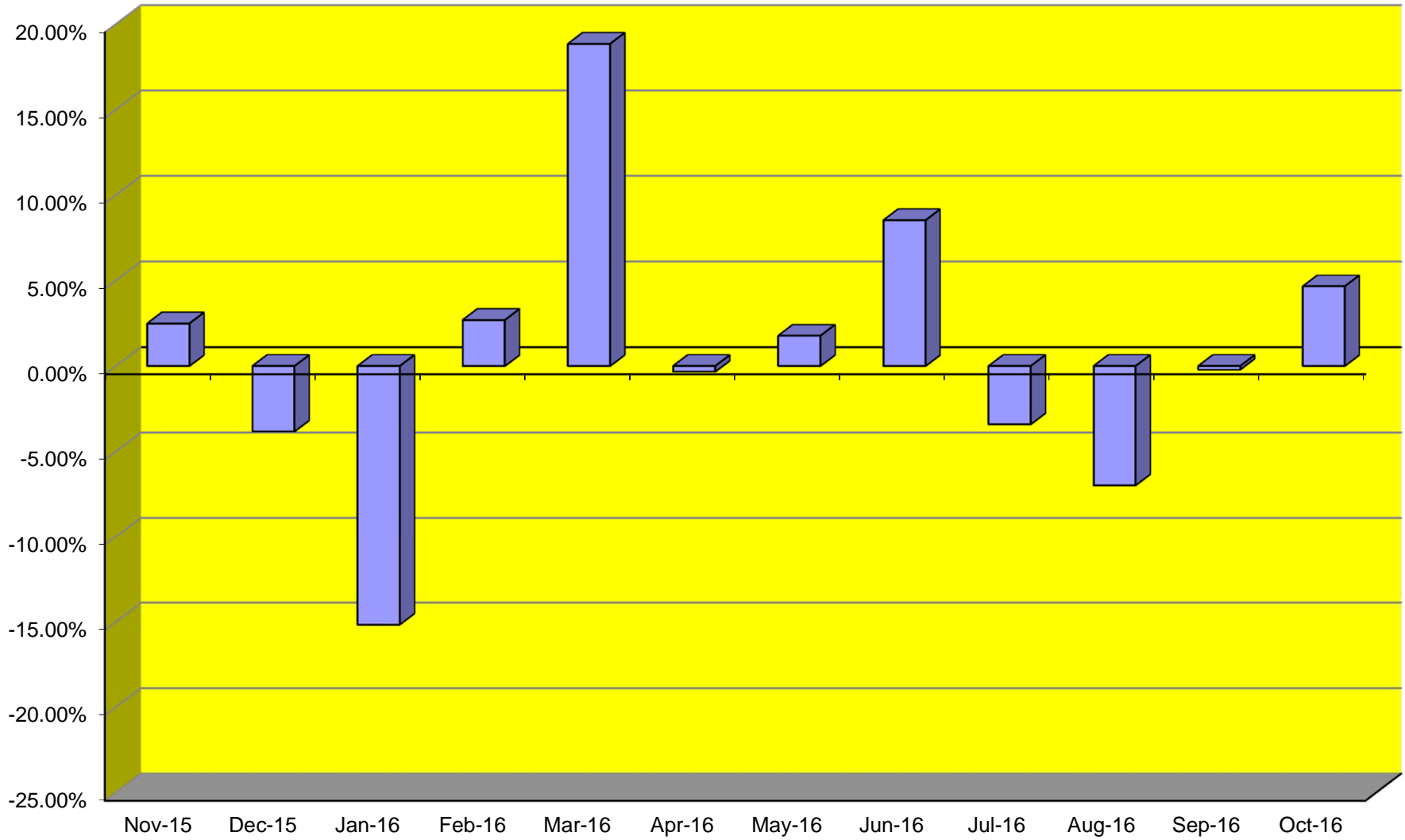
TOTAL CARGO POUNDAGE - AUSTIN, TEXAS



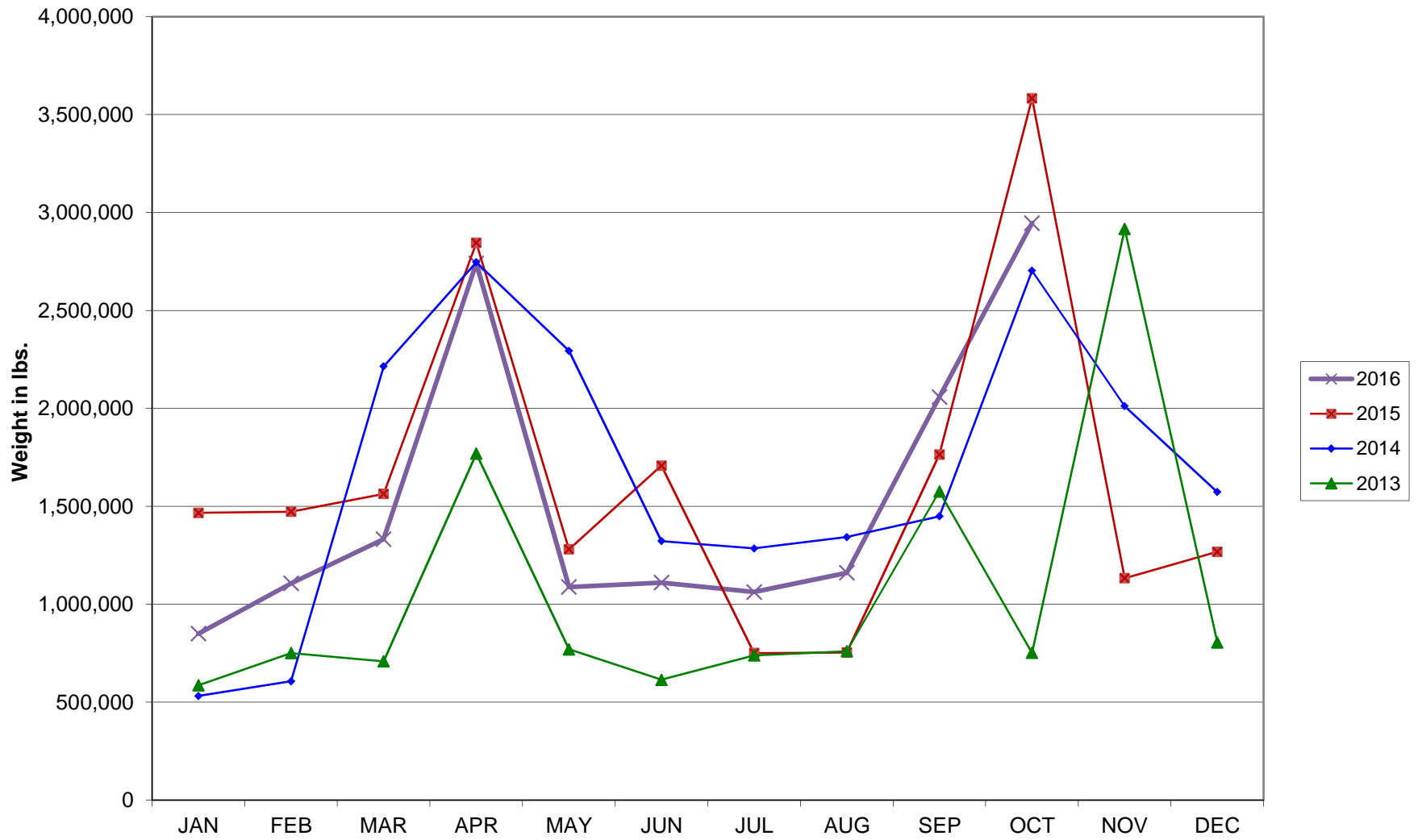
Average Daily Passengers



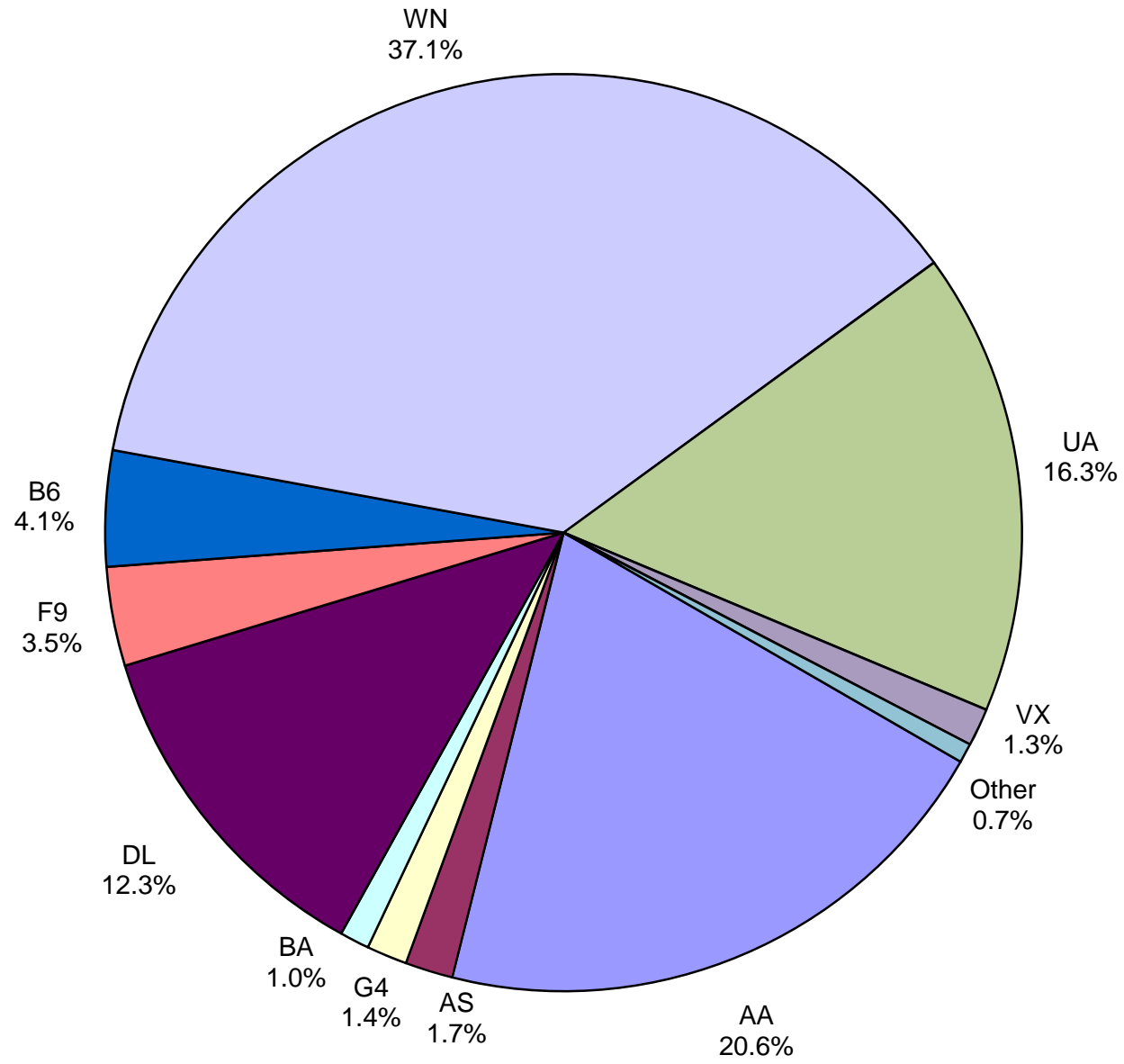
Monthly % Change in Average Daily Passengers



HISTORY OF INTERNATIONAL AIR CARGO



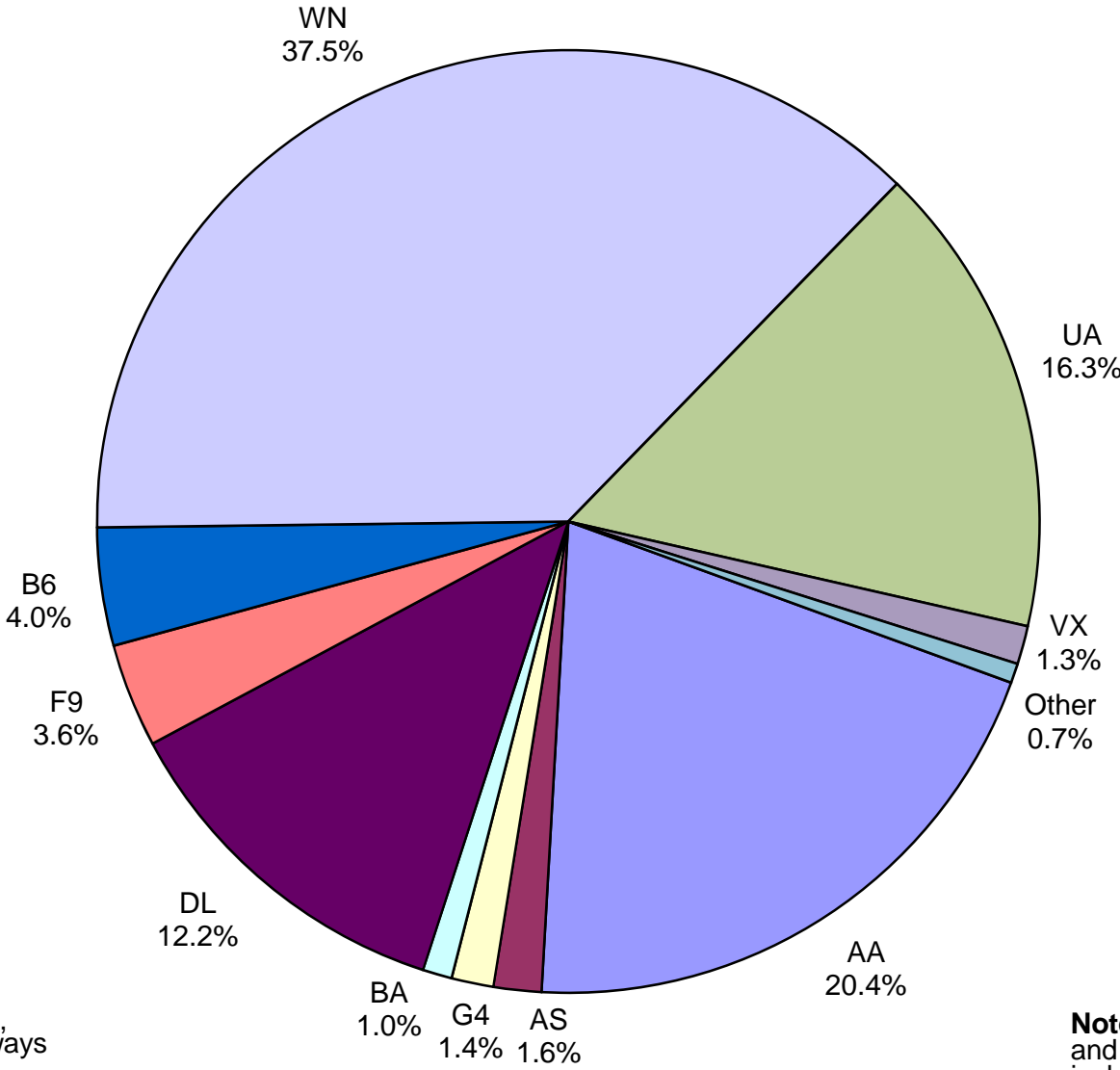
**Total Passengers
October 2016**



Other: Air Canada, Sun Country, Texas Sky, Volaris, Xtra Airways

Note: American, Delta and United Airlines percentages include Affiliates.

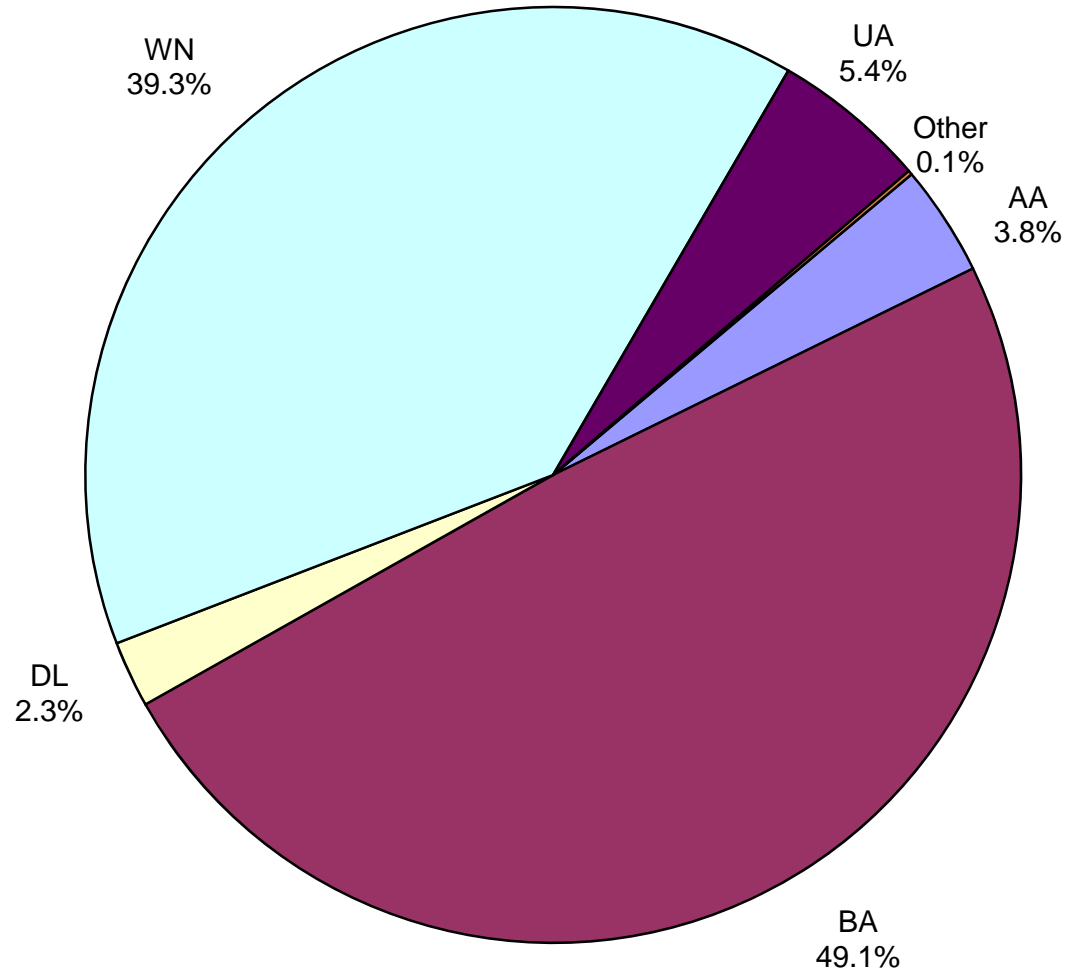
**All Passenger Carriers
Enplaned Revenue Passengers
October 2016**



Other: Air Canada, Sun Country, Texas Sky, Volaris and Xtra Airways

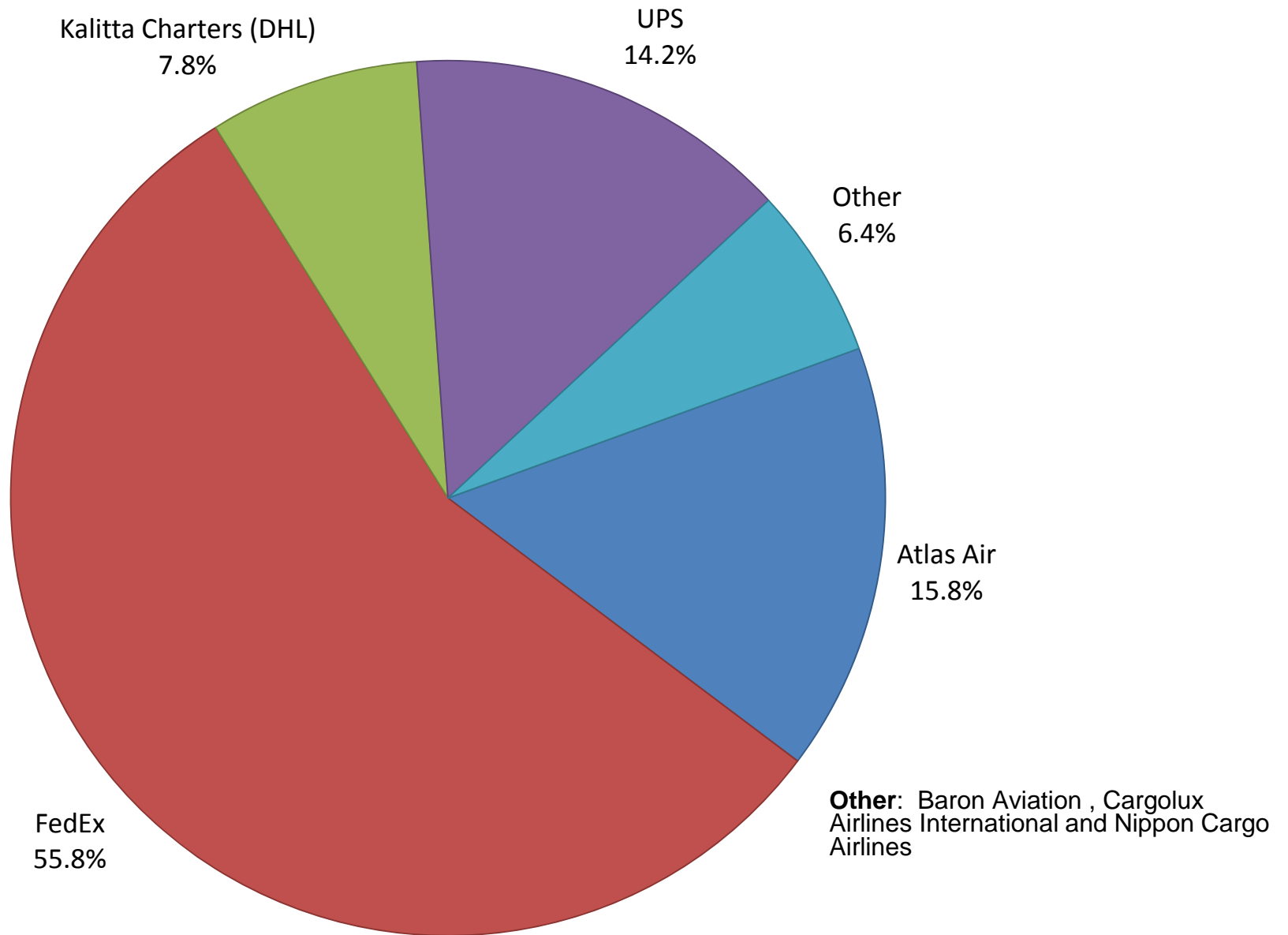
Note: American/US Airways, Delta and United Airlines percentages include Affiliates.

**AUS Belly Freight Market Shares
October 2016**

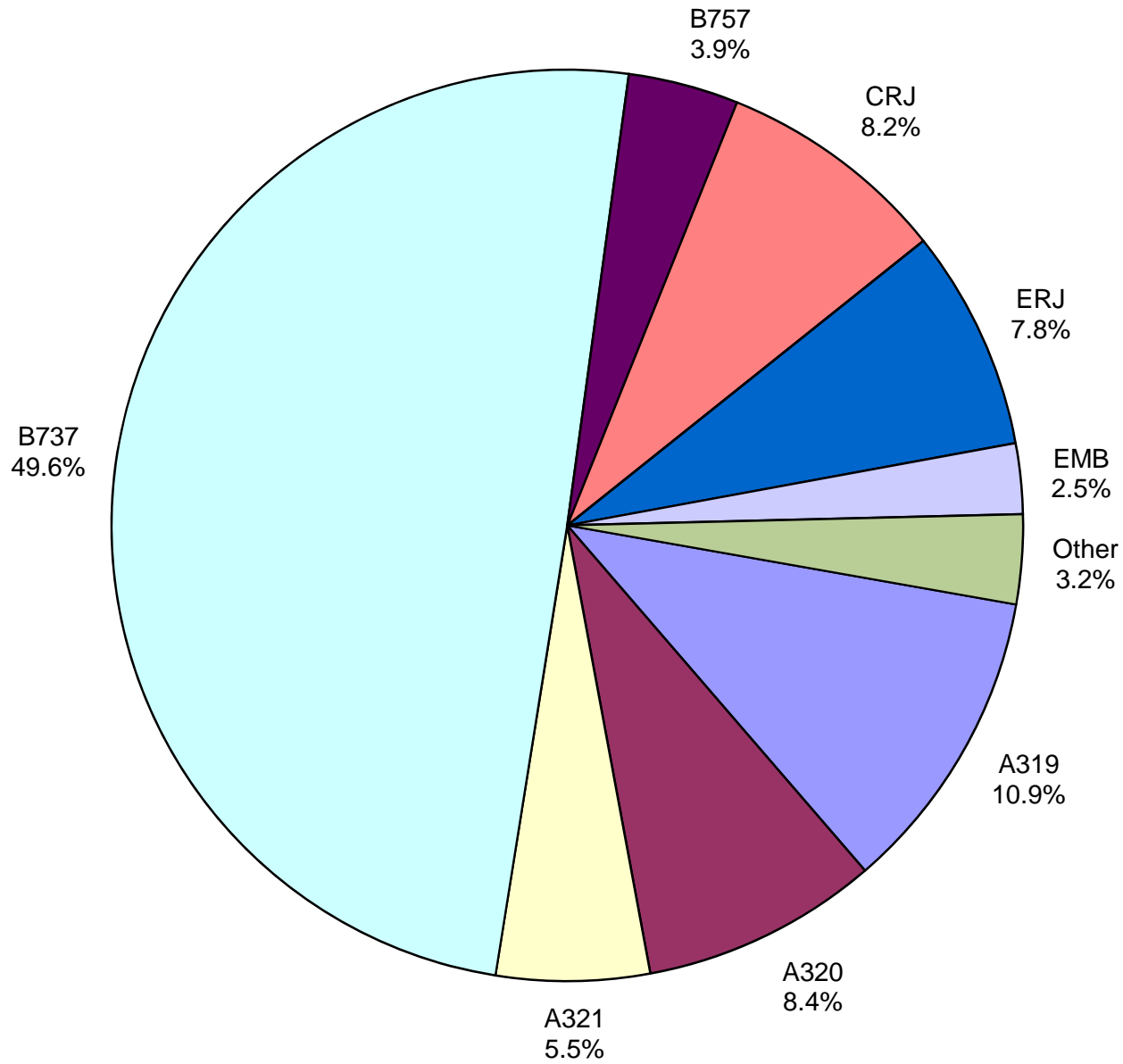


Other = Alaska Airlines

Air Cargo Market Share October 2016

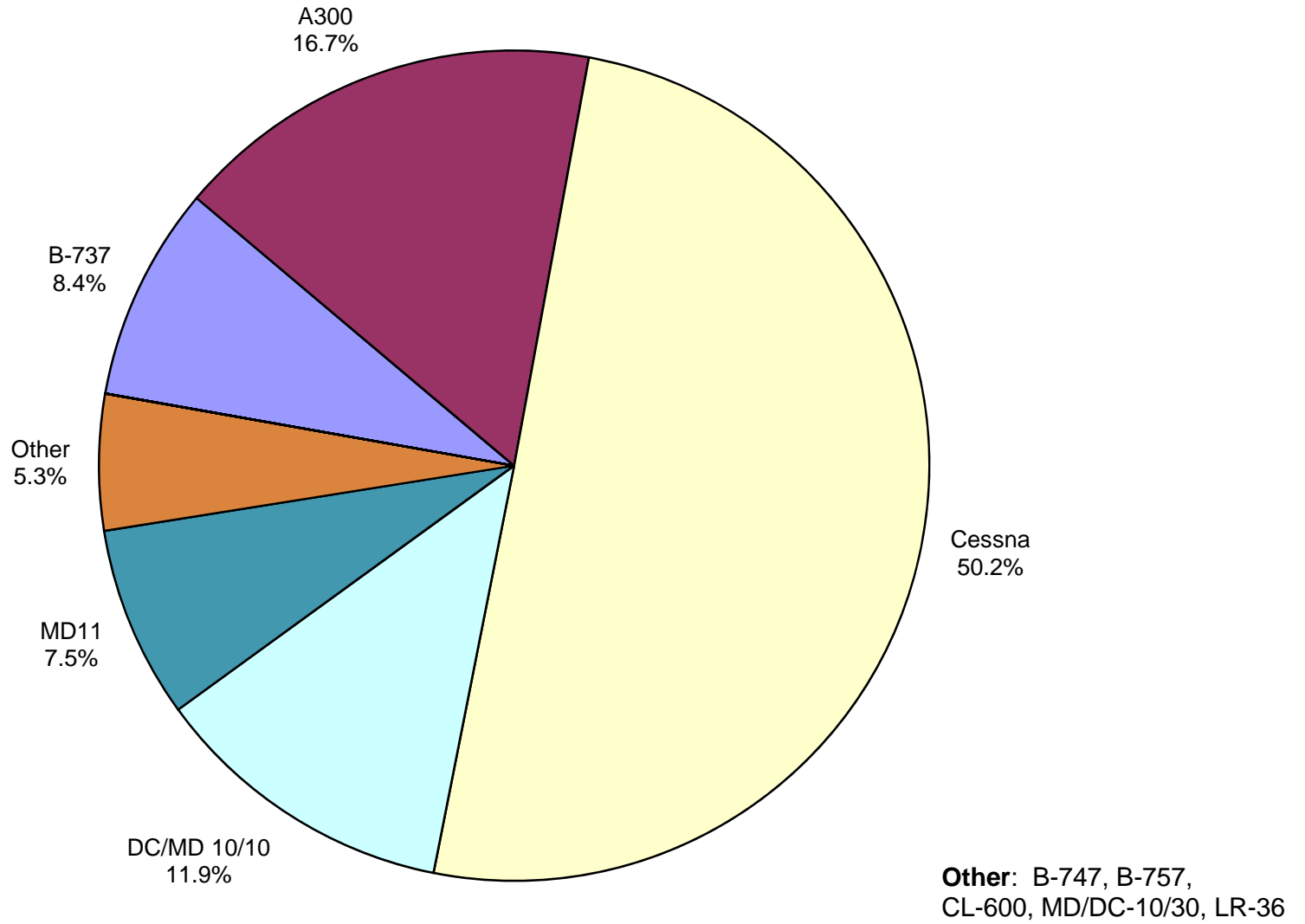


**AUS Scheduled Passenger Aircraft Fleet Mix
October 2016**



Other: B-717, B-787,
BAE-3100, BAE-3200 ,
BAE-4100, MD-80, MD-83
and MD-90

**AUS Scheduled Cargo Aircraft Fleet Mix
October 2016**



Austin-Bergstrom International Airport

PAX Detail Report - October, 2016

Period Company	10/2016	10/2015	Difference	Change	YTD 2016	YTD 2015	YTD Difference	YTD Change	2016 Share	2015 Share	Share Diff
AeroMexico Airlines/Aerovias de Mexico, S.A. de C.V.	0	98	-98	-100.0	0	98	-98	-100.0	0.0	0.0	0.0
Air Canada	4,250	4,029	221	5.5	35,197	18,543	16,654	89.8	0.3	0.2	0.2
Alaska Airlines, Inc.	18,550	10,574	7,976	75.4	186,869	121,316	65,553	54.0	1.8	1.2	0.6
Allegiant Air, LLC	15,736	10,258	5,478	53.4	142,769	99,288	43,481	43.8	1.4	1.0	0.4
American Airlines, Inc.	226,548	183,268	43,280	23.6	2,112,945	1,692,744	420,201	24.8	20.5	17.2	3.2
Ameristarjet Charter Inc.	0	6	-6	-100.0	14	14	0	0.0	0.0	0.0	0.0
Atlas Air, Inc	0	0	0	0.0	453	558	-105	-18.8	0.0	0.0	0.0
Branson AirExpress, LLC	0	0	0	0.0	0	2,107	-2,107	-100.0	0.0	0.0	0.0
British Airways Plc	11,513	11,853	-340	-2.9	109,817	103,737	6,080	5.9	1.1	1.1	0.0
Condor Airlines (Flugdienst) GmbH	0	0	0	0.0	8,142	0	8,142	0.0	0.1	0.0	0.1
Delta Air Lines	134,925	127,046	7,879	6.2	1,275,704	1,196,432	79,272	6.6	12.3	12.2	0.2
Frontier Airlines, Inc.	38,427	35,501	2,926	8.2	268,817	304,602	-35,785	-11.7	2.6	3.1	-0.5
Iberia Airlines	0	0	0	0.0	246	0	246	0.0	0.0	0.0	0.0
JetBlue Airways Corporation	44,900	41,494	3,406	8.2	474,722	458,131	16,591	3.6	4.6	4.7	-0.1
Kalitta Charters, LLC	0	0	0	0.0	0	1	-1	-100.0	0.0	0.0	0.0
Miami Air International Inc.	0	415	-415	-100.0	0	743	-743	-100.0	0.0	0.0	0.0
Omni Air International	0	0	0	0.0	0	238	-238	-100.0	0.0	0.0	0.0
Public Charters, Inc., d/b/a Texas Sky	228	232	-4	-1.7	1,462	2,345	-883	-37.7	0.0	0.0	0.0
Republic Airlines, Inc.	0	0	0	0.0	0	1,058	-1,058	-100.0	0.0	0.0	0.0
Southwest Airlines	408,555	373,556	34,999	9.4	3,941,651	3,556,716	384,935	10.8	38.1	36.2	2.0
Sun Country Airlines/ MN Airlines, LLC	883	240	643	267.9	4,554	2,031	2,523	124.2	0.0	0.0	0.0
Titan Airways Ltd.	0	0	0	0.0	0	160	-160	-100.0	0.0	0.0	0.0
Transportes Aeromar S.A. de C.V.	0	0	0	0.0	0	170	-170	-100.0	0.0	0.0	0.0
Turkish Airlines	0	0	0	0.0	376	0	376	0.0	0.0	0.0	0.0
United Airlines, Inc.	179,883	177,660	2,223	1.3	1,617,871	1,642,433	-24,562	-1.5	15.7	16.7	-1.0
US Airways Group, Inc.	0	41,143	-41,143	-100.0	0	428,636	-428,636	-100.0	0.0	4.4	-4.4
Virgin America Inc.	14,643	27,374	-12,731	-46.5	143,520	199,832	-56,312	-28.2	1.4	2.0	-0.6
Volaris	1,949	0	1,949	0.0	5,625	0	5,625	0.0	0.1	0.0	0.1
Xtra Airways/Casino Express	294	0	294	0.0	1,461	0	1,461	0.0	0.0	0.0	0.0
Report Totals	1,101,284	1,044,747	56,537	5.4%	10,332,215	9,831,933	500,282	5.1%			

Statistics Included in Report:

Domestic Passengers:	Enplaned Revenue, Deplaned Revenue, Enplaned Non-Revenue, Deplaned Non-Revenue
International Passengers:	Enplaned Revenue, Deplaned Revenue, Enplaned Non-Revenue, Deplaned Non-Revenue
International Pre-Cleared Passengers:	Enplaned Revenue, Deplaned Revenue, Enplaned Non-Revenue, Deplaned Non-Revenue

Austin-Bergstrom International Airport

Summary Landing Report

Landing Type: Total

Month	2016		2015		2014		% Change 2016 - 2015		% Change 2015 - 2014	
	Count	Weight	Count	Weight	Count	Weight	Count	Weight	Count	Weight
January	4,622	560,718,408	4,480	530,688,382	4,213	478,945,673	3.17%	5.66%	6.34%	10.80%
February	4,387	527,452,920	3,992	477,489,019	3,839	437,160,505	9.89%	10.46%	3.99%	9.23%
March	5,151	639,655,137	4,872	584,604,521	4,746	552,992,572	5.73%	9.42%	2.65%	5.72%
April	4,892	614,643,711	4,875	593,462,176	4,515	521,133,372	0.35%	3.57%	7.97%	13.88%
May	5,096	630,853,941	5,161	625,876,151	4,749	553,415,664	-1.26%	0.80%	8.68%	13.09%
June	5,179	651,537,449	5,239	644,690,908	4,821	569,196,868	-1.15%	1.06%	8.67%	13.26%
July	5,233	663,015,597	5,503	676,131,170	5,000	590,375,055	-4.91%	-1.94%	10.06%	14.53%
August	5,181	660,099,361	5,277	652,770,571	4,752	562,685,827	-1.82%	1.12%	11.05%	16.01%
September	4,738	623,397,035	4,833	598,547,454	4,513	546,749,431	-1.97%	4.15%	7.09%	9.47%
October	4,923	649,182,343	4,891	611,952,269	4,842	589,981,037	0.65%	6.08%	1.01%	3.72%
November			4,815	605,234,834	4,532	546,643,220			6.24%	10.72%
December			5,100	633,215,540	4,826	569,752,623			5.68%	11.14%
Totals for Selected Period	49,402	6,220,555,902	49,123	5,996,212,621	45,990	5,402,636,004	0.57%	3.74%	6.81%	10.99%
Yearly Totals	49,402	6,220,555,902	59,038	7,234,662,995	55,348	6,519,031,847			6.67%	10.98%