

**Austin-Bergstrom International Airport
Aviation Activity Report
Calendar Year 2018 vs 2017**

Combined Terminals

	11/2018	11/2017	Percent Change	1/2018 - 11/2018	1/2017 - 11/2017	Percent Change
ABIA						
Total Passenger Activity						
Domestic Enplaned Revenue	629,444	577,478	9.00	6,756,690	5,966,517	13.24
Domestic Deplaned Revenue	626,455	576,322	8.70	6,761,641	5,948,109	13.68
International Enplaned Revenue	11,223	11,009	1.94	177,890	130,997	35.80
International Deplaned Revenue	11,482	10,710	7.21	182,398	131,835	38.35
Domestic Enplaned Non-Revenue	12,384	12,821	-3.41	160,329	148,307	8.11
Domestic Deplaned Non-Revenue	12,269	12,387	-0.95	153,873	141,570	8.69
International Enplaned Non-Revenue	101	107	-5.61	1,352	1,082	24.95
International Deplaned Non-Revenue	89	70	27.14	1,157	911	27.00
Intl Enplaned Pre-Cleared Revenue	2,192	1,675	30.87	21,067	18,429	14.31
Intl Deplaned Pre-Cleared Revenue	2,432	1,886	28.95	22,837	19,514	17.03
Intl Enplaned Pre-Cleared Non-Revenue	30	29	3.45	337	259	30.12
Intl Deplaned Pre-Cleared Non-Revenue	30	28	7.14	350	262	33.59
South Terminal Domestic Enplaned Revenue	26,119	12,761	104.68	157,840	95,603	65.10
South Terminal Domestic Deplaned Revenue	26,206	12,503	109.60	158,764	95,324	66.55
South Terminal Domestic Enplaned Non-Revenue	56	2	2,700.00	111	48	131.25
South Terminal Domestic Deplaned Non-Revenue	69	3	2,200.00	141	25	464.00
ABIA Passenger Totals	1,360,581	1,229,791	10.64	14,556,777	12,698,792	14.63
<i>ABIA Enplaned Passenger Totals</i>	<i>681,549</i>	<i>615,882</i>	<i>10.66</i>	<i>7,275,616</i>	<i>6,361,242</i>	<i>14.37</i>
<i>ABIA Deplaned Passenger Totals</i>	<i>679,032</i>	<i>613,909</i>	<i>10.61</i>	<i>7,281,161</i>	<i>6,337,550</i>	<i>14.89</i>
<i>ABIA Domestic Passenger Totals</i>	<i>1,333,002</i>	<i>1,204,277</i>	<i>10.69</i>	<i>14,149,389</i>	<i>12,395,503</i>	<i>14.15</i>
<i>ABIA International Passenger Totals</i>	<i>27,579</i>	<i>25,514</i>	<i>8.09</i>	<i>407,388</i>	<i>303,289</i>	<i>34.32</i>

CURRENT PASSENGER RECORD = 1,511,634 RECORD SET = JULY 2018

Please note: Due to a revised Airline passenger activity report received this month for September 2018, a few changes in the Total Passenger Activity, "Calendar Year-To-Date" column have been made. While the bottom line total passenger numbers did not change, the International Enplaned passengers number decreased by 240 while the Domestic Enplaned passengers number increased by 240. Additionally, the International Deplaned passengers number decreased by 236 while the Domestic Deplaned passengers number increased by 236.

Total Aircraft Operations

Air Carrier	11,048	10,335	6.90	123,482	112,833	9.44
Commuter & Air Taxi	1,532	1,453	5.44	16,199	14,023	15.52
Military	681	640	6.41	9,113	9,062	0.56
General Aviation						
Itinerant	4,225	3,968	6.48	43,668	45,525	-4.08
Local	42	94	-55.32	1,323	2,233	-40.75
Total G.A.	4,267	4,062	5.05	44,991	47,758	-5.79
Total Operations	17,528	16,490	6.29	193,785	183,676	5.50

**Austin-Bergstrom International Airport
Aviation Activity Report
Calendar Year 2018 vs 2017**

By Terminal

	11/2018	11/2017	Percent Change	1/2018 - 11/2018	1/2017 - 11/2017	Percent Change
<u>Barbara Jordan Terminal (BJT)</u>						
Passenger Activity						
Domestic Enplaned Revenue	629,444	577,478	9.00	6,756,690	5,966,517	13.24
Domestic Deplaned Revenue	626,455	576,322	8.70	6,761,641	5,948,109	13.68
International Enplaned Revenue	11,223	11,009	1.94	177,890	130,997	35.80
International Deplaned Revenue	11,482	10,710	7.21	182,398	131,835	38.35
Domestic Enplaned Non-Revenue	12,384	12,821	-3.41	160,329	148,307	8.11
Domestic Deplaned Non-Revenue	12,269	12,387	-0.95	153,873	141,570	8.69
International Enplaned Non-Revenue	101	107	-5.61	1,352	1,082	24.95
International Deplaned Non-Revenue	89	70	27.14	1,157	911	27.00
Intl Enplaned Pre-Cleared Revenue	2,192	1,675	30.87	21,067	18,429	14.31
Intl Deplaned Pre-Cleared Revenue	2,432	1,886	28.95	22,837	19,514	17.03
Intl Enplaned Pre-Cleared Non-Revenue	30	29	3.45	337	259	30.12
Intl Deplaned Pre-Cleared Non-Revenue	30	28	7.14	350	262	33.59
Barbara Jordan Terminal Passenger Totals	1,308,131	1,204,522	8.60	14,239,921	12,507,792	13.85
<i>BJT Enplaned Passenger Totals</i>	<i>655,374</i>	<i>603,119</i>	<i>8.66</i>	<i>7,117,665</i>	<i>6,265,591</i>	<i>13.60</i>
<i>BJT Deplaned Passenger Totals</i>	<i>652,757</i>	<i>601,403</i>	<i>8.54</i>	<i>7,122,256</i>	<i>6,242,201</i>	<i>14.10</i>
<i>BJT Domestic Passenger Totals</i>	<i>1,280,552</i>	<i>1,179,008</i>	<i>8.61</i>	<i>13,832,533</i>	<i>12,204,503</i>	<i>13.34</i>
<i>BJT International Passenger Totals</i>	<i>27,579</i>	<i>25,514</i>	<i>8.09</i>	<i>407,388</i>	<i>303,289</i>	<i>34.32</i>
<u>South Terminal (ST)</u>						
Passenger Activity						
South Terminal Domestic Enplaned Revenue	26,119	12,761	104.68	157,840	95,603	65.10
South Terminal Domestic Deplaned Revenue	26,206	12,503	109.60	158,764	95,324	66.55
South Terminal Domestic Enplaned Non-Revenue	56	2	2700.00	111	48	131.25
South Terminal Domestic Deplaned Non-Revenue	69	3	2200.00	141	25	464.00
South Terminal Passenger Totals	52,450	25,269	107.57	316,856	191,000	65.89
<i>ST Enplaned Passenger Totals</i>	<i>26,175</i>	<i>12,763</i>	<i>105.09</i>	<i>157,951</i>	<i>95,651</i>	<i>65.13</i>
<i>ST Deplaned Passenger Totals</i>	<i>26,275</i>	<i>12,506</i>	<i>110.10</i>	<i>158,905</i>	<i>95,349</i>	<i>66.66</i>

**Austin-Bergstrom International Airport
Aviation Activity Report
Calendar Year 2018 vs 2017**

	11/2018	11/2017	Percent Change	1/2018 - 11/2018	1/2017 - 11/2017	Percent Change
<u>Total Cargo Activity</u>						
Mail						
Domestic Enplaned Mail	187,798	189,279	-0.78	2,190,371	2,107,313	3.94
Domestic Deplaned Mail	555,305	455,429	21.93	4,802,636	4,199,587	14.36
International Enplaned Mail	0	0	0.00	0	0	0.00
International Deplaned Mail	0	0	0.00	0	2	-100.00
South Terminal-Domestic Enplaned Mail	0	0	0.00	0	0	0.00
South Terminal-Domestic Deplaned Mail	0	0	0.00	0	0	0.00
Mail Totals	743,103	644,708	15.26	6,993,007	6,306,902	10.88
Cargo						
Domestic Enplaned Cargo	4,822,468	4,772,097	1.06	54,303,545	56,366,052	-3.66
Domestic Deplaned Cargo	6,975,427	7,041,824	-0.94	76,577,280	77,532,192	-1.23
International Enplaned Cargo	617,159	584,783	5.54	7,662,951	8,529,206	-10.16
International Deplaned Cargo	138,344	299,440	-53.80	3,430,680	4,878,465	-29.68
South Terminal-Domestic Enplaned Cargo	0	0	0.00	0	0	0.00
South Terminal-Domestic Deplaned Cargo	0	0	0.00	0	0	0.00
Cargo Totals	12,553,398	12,698,144	-1.14	141,974,456	147,305,915	-3.62
Belly Freight						
Domestic Enplaned Belly Freight	289,804	298,757	-3.00	3,292,354	3,127,280	5.28
Domestic Deplaned Belly Freight	489,199	478,798	2.17	5,427,573	5,586,797	-2.85
International Enplaned Belly Freight	177,324	535,071	-66.86	2,912,685	3,062,986	-4.91
International Deplaned Belly Freight	897,299	845,513	6.12	6,926,508	8,058,089	-14.04
South Terminal-Domestic Enplaned Belly Frght	0	0	0.00	0	0	0.00
South Terminal-Domestic Deplaned Belly Frght	0	0	0.00	0	0	0.00
Belly Freight Totals	1,853,626	2,158,139	-14.11	18,559,120	19,835,152	-6.43
Cargo Totals (Mail, Cargo, Belly Freight)	15,150,127	15,500,991	-2.26	167,526,583	173,447,969	-3.41
<i>Enplaned Cargo Totals</i>	<i>6,094,553</i>	<i>6,379,987</i>	<i>-4.47</i>	<i>70,361,906</i>	<i>73,192,837</i>	<i>-3.87</i>
<i>Deplaned Cargo Totals</i>	<i>9,055,574</i>	<i>9,121,004</i>	<i>-0.72</i>	<i>97,164,677</i>	<i>100,255,132</i>	<i>-3.08</i>
<i>Domestic Cargo Totals</i>	<i>13,320,001</i>	<i>13,236,184</i>	<i>0.63</i>	<i>146,593,759</i>	<i>148,919,221</i>	<i>-1.56</i>
<i>International Cargo Totals</i>	<i>1,830,126</i>	<i>2,264,807</i>	<i>-19.19</i>	<i>20,932,824</i>	<i>24,528,748</i>	<i>-14.66</i>

CURRENT CARGO RECORD = 40,215,518

RECORD SET = MARCH 2001

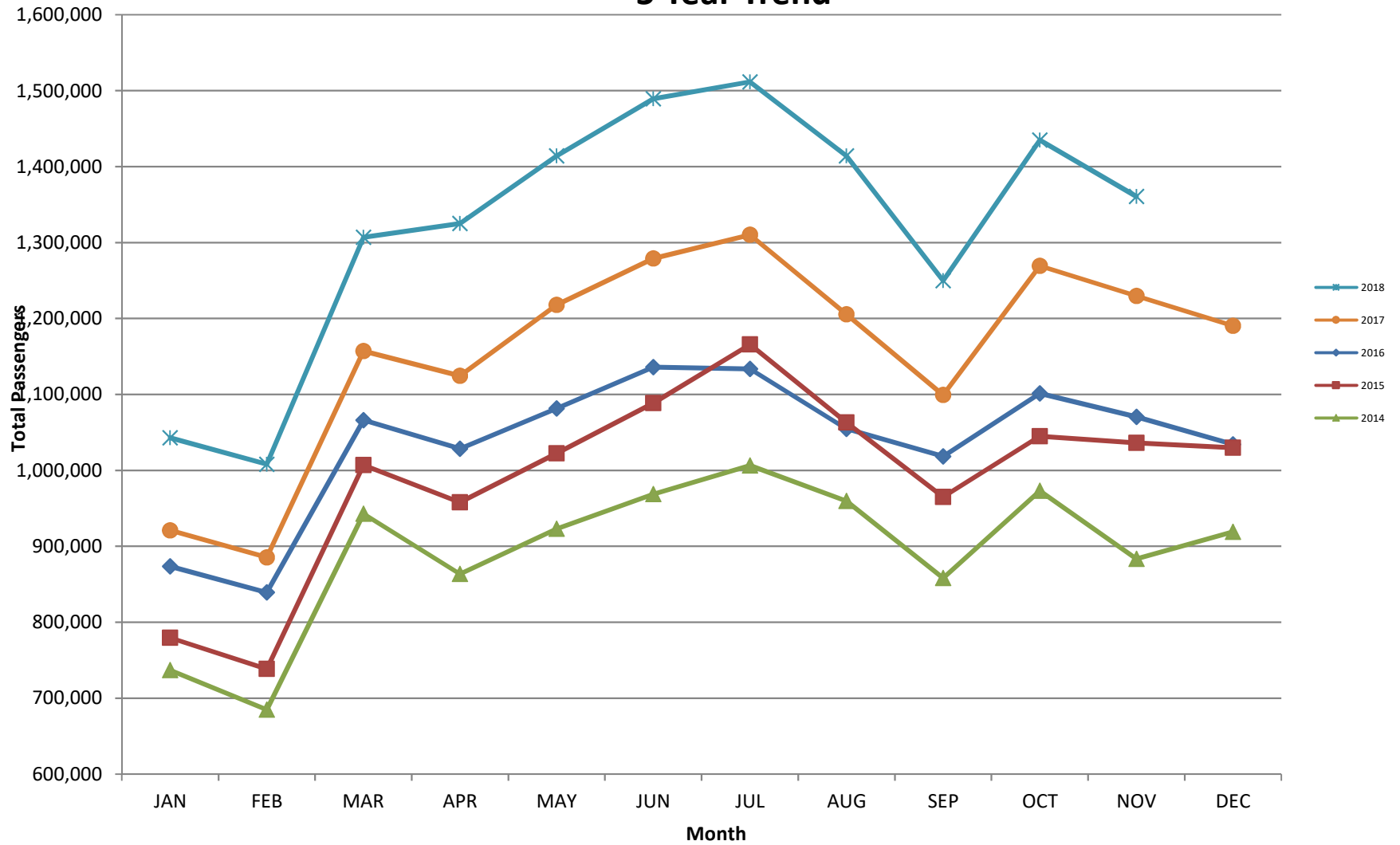
AUS – Airline Codes

November 2018

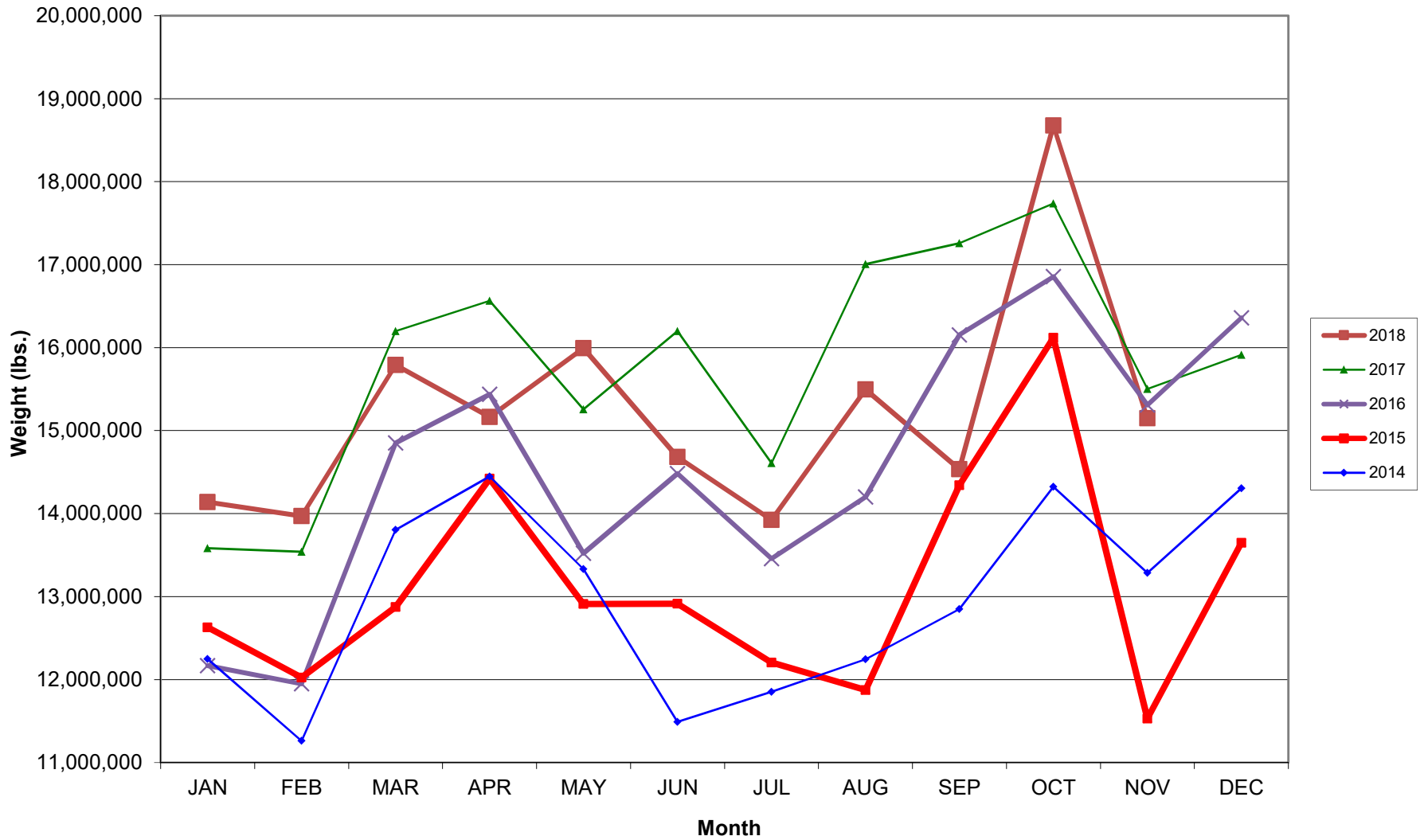
<u>Code</u>	<u>Carrier</u>
AM	Aerovias de Mexico S.A. de C.V. dba AeroMexico Airlines
AC	Air Canada
AS	Alaska Airlines, Inc. (Includes Virgin America. Merger effective 2/1/2018)
G4	Allegiant Air, LLC
AA	American Airlines, Inc.
BA	British Airways Plc
Y4	Concesionaria Vuela Compañía de Aviación, S.A.P.I. de C.V dba Volaris
DL	Delta Airlines
F9	Frontier Airlines
B6	JetBlue Airways Corp.
WN	Southwest Airlines
SY	Sun Country Airlines/ MN Airlines, LLC
WQ	Swift Air
UA	United Airlines, Inc.
VC	VIA Airlines

AUSTIN PASSENGER TRAFFIC

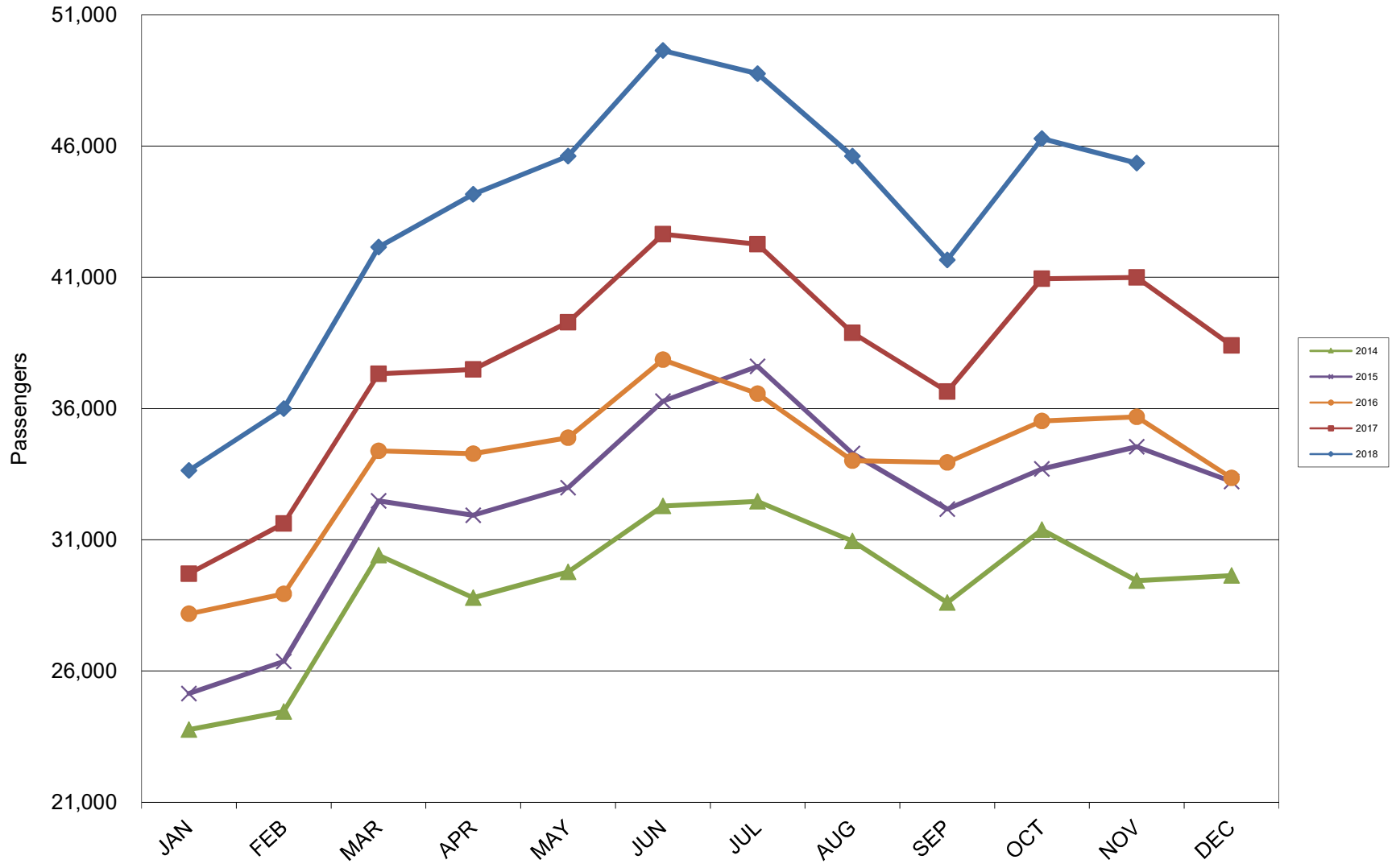
5 Year Trend



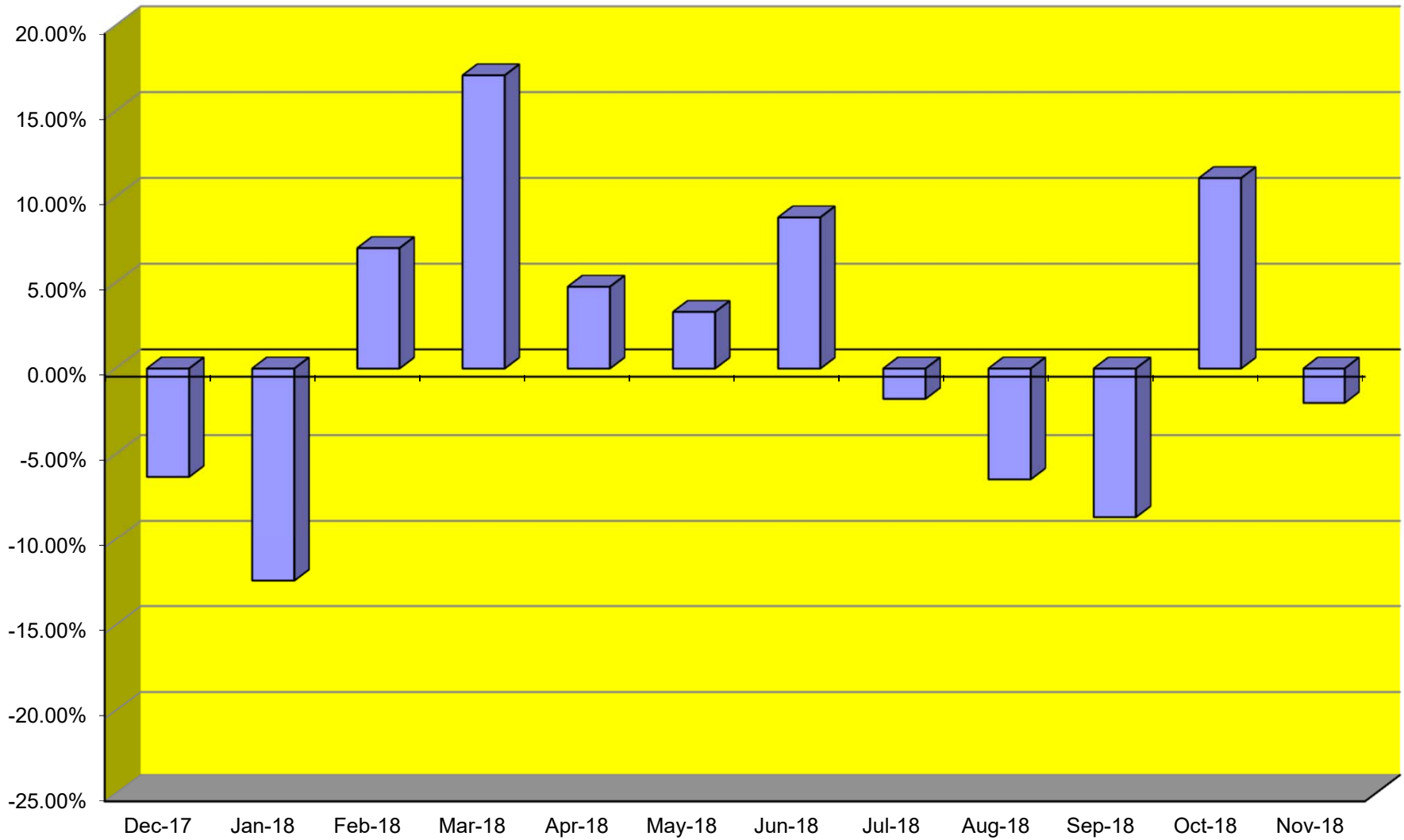
TOTAL CARGO POUNDAGE - AUSTIN, TEXAS



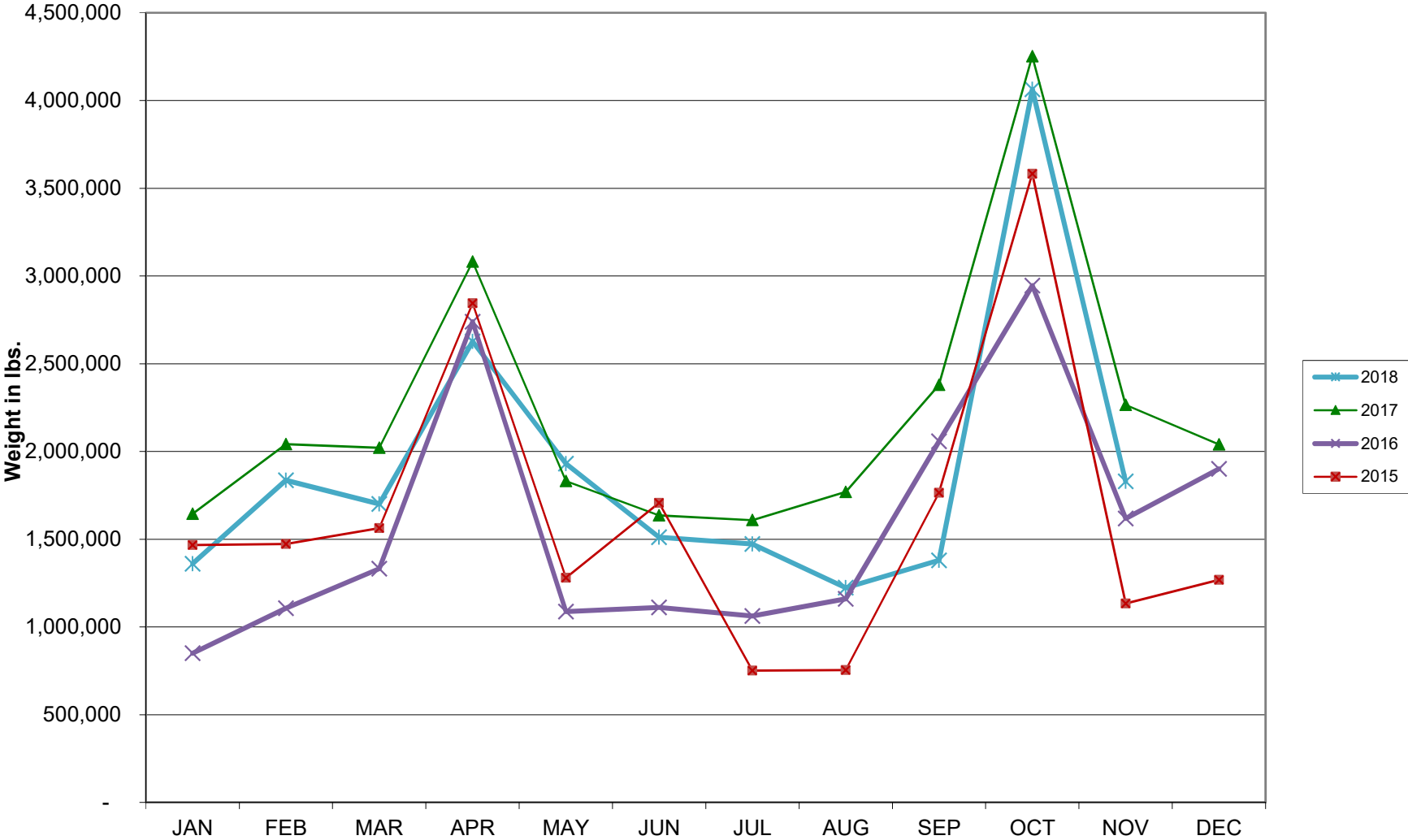
Average Daily Passengers



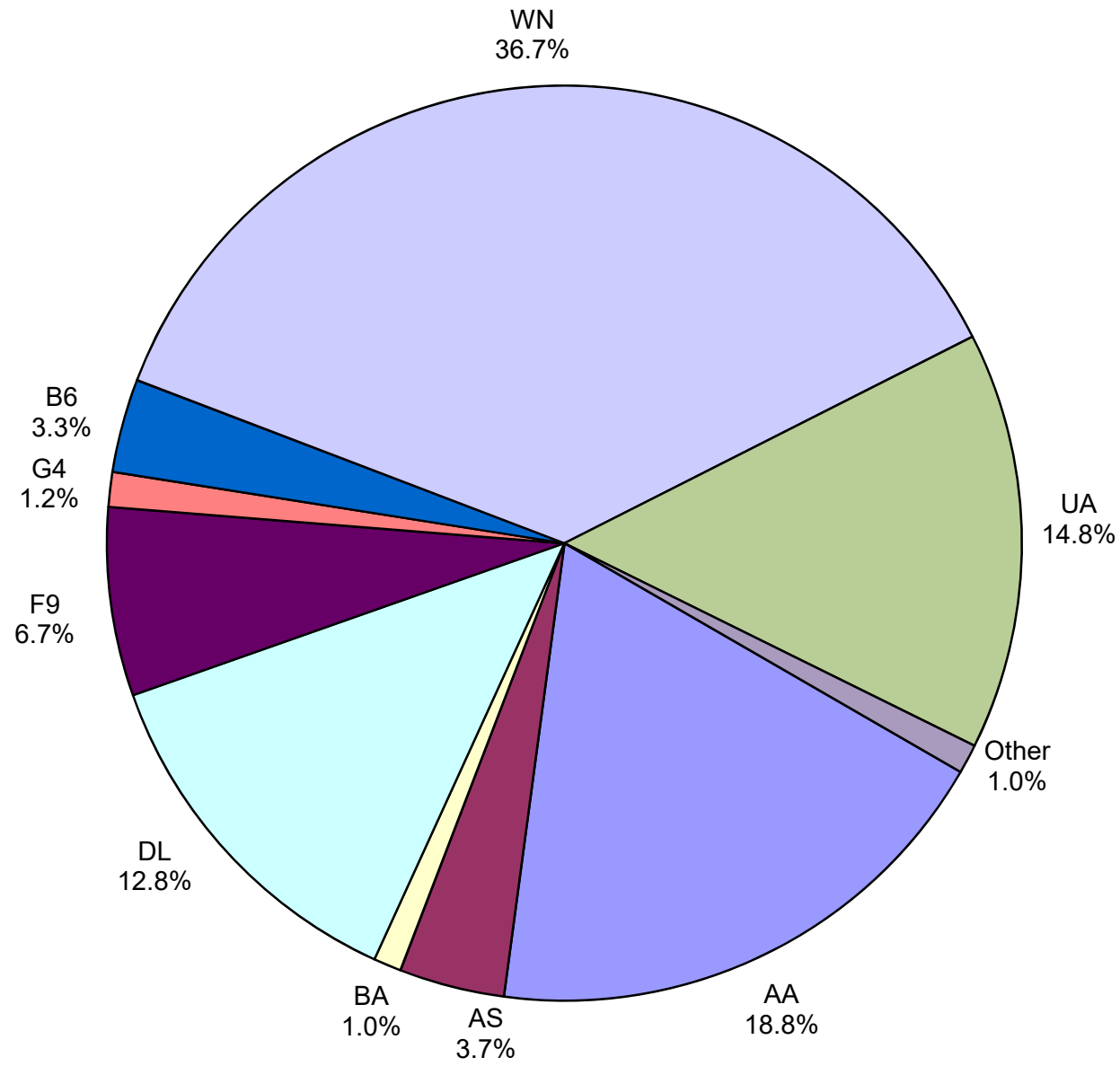
Monthly % Change in Average Daily Passengers



HISTORY OF INTERNATIONAL AIR CARGO



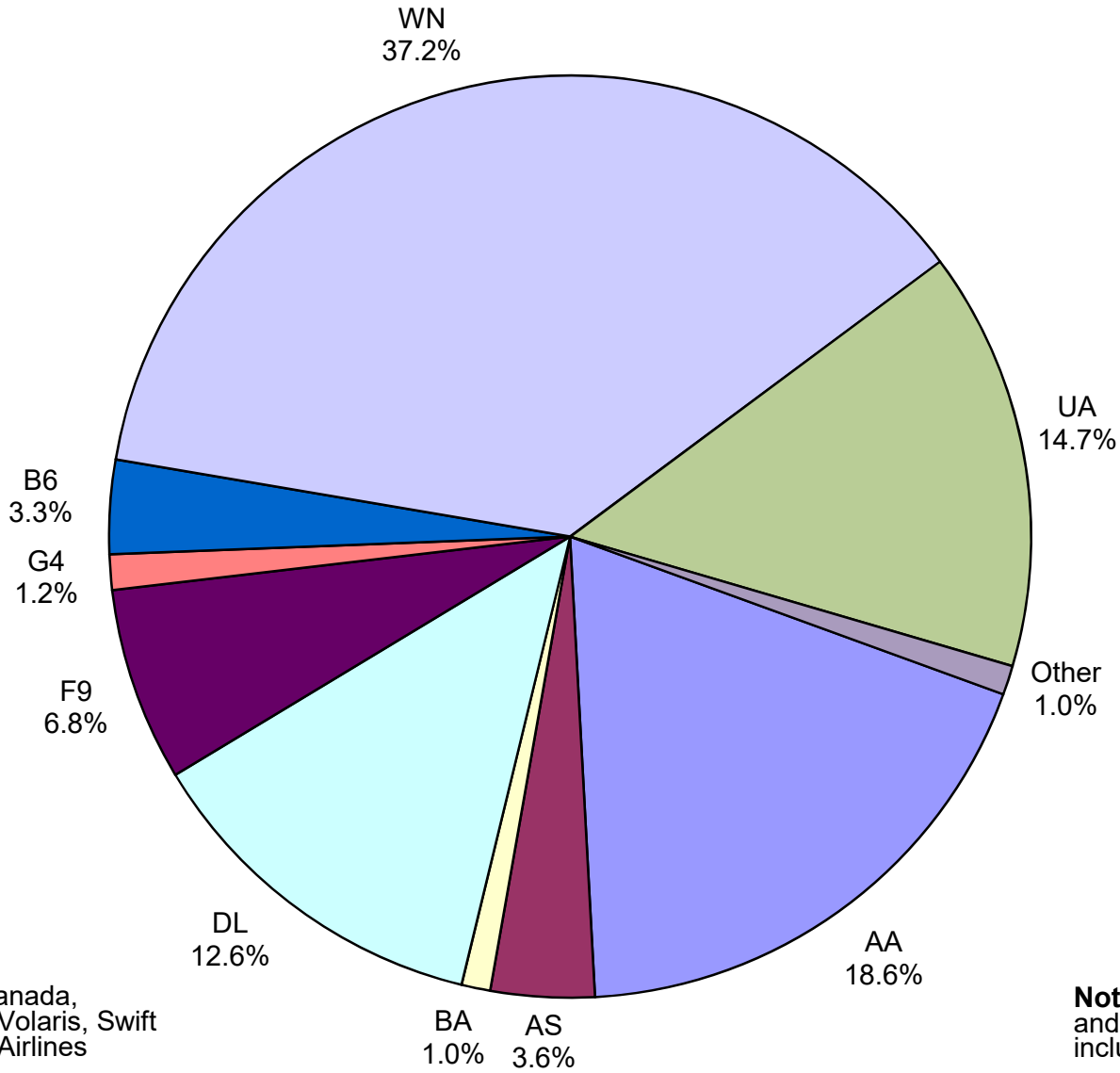
Total Passengers November 2018



Other: Aeromexico, Air Canada LLC, Sun Country, Swift Air, VIA Airlines and Concesionaria Vuela dba Volaris

Note: American, Delta and United Airlines percentages include Affiliates.

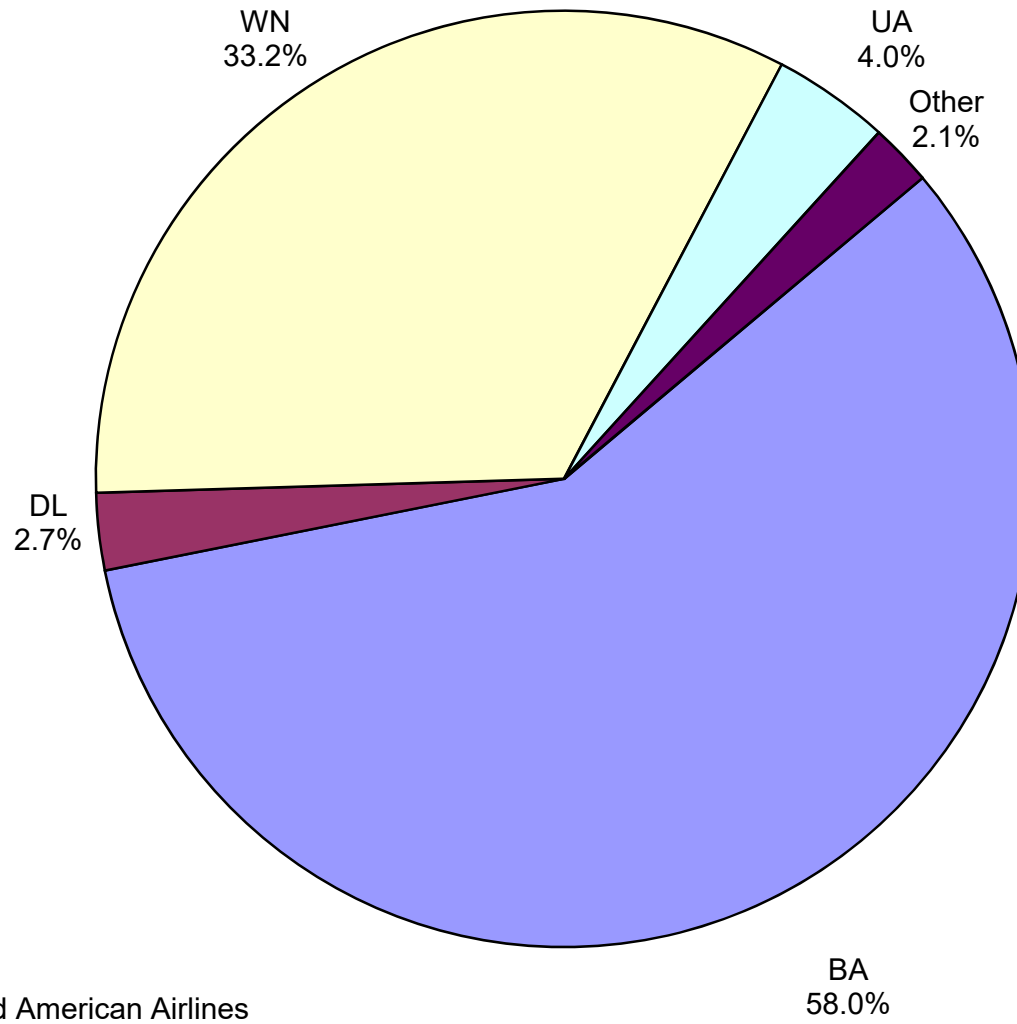
**All Passenger Carriers
Enplaned Revenue Passengers
November 2018**



Other: Aeromexico, Air Canada, Concesionaria Vuela dba Volaris, Swift Air, Sun Country and VIA Airlines

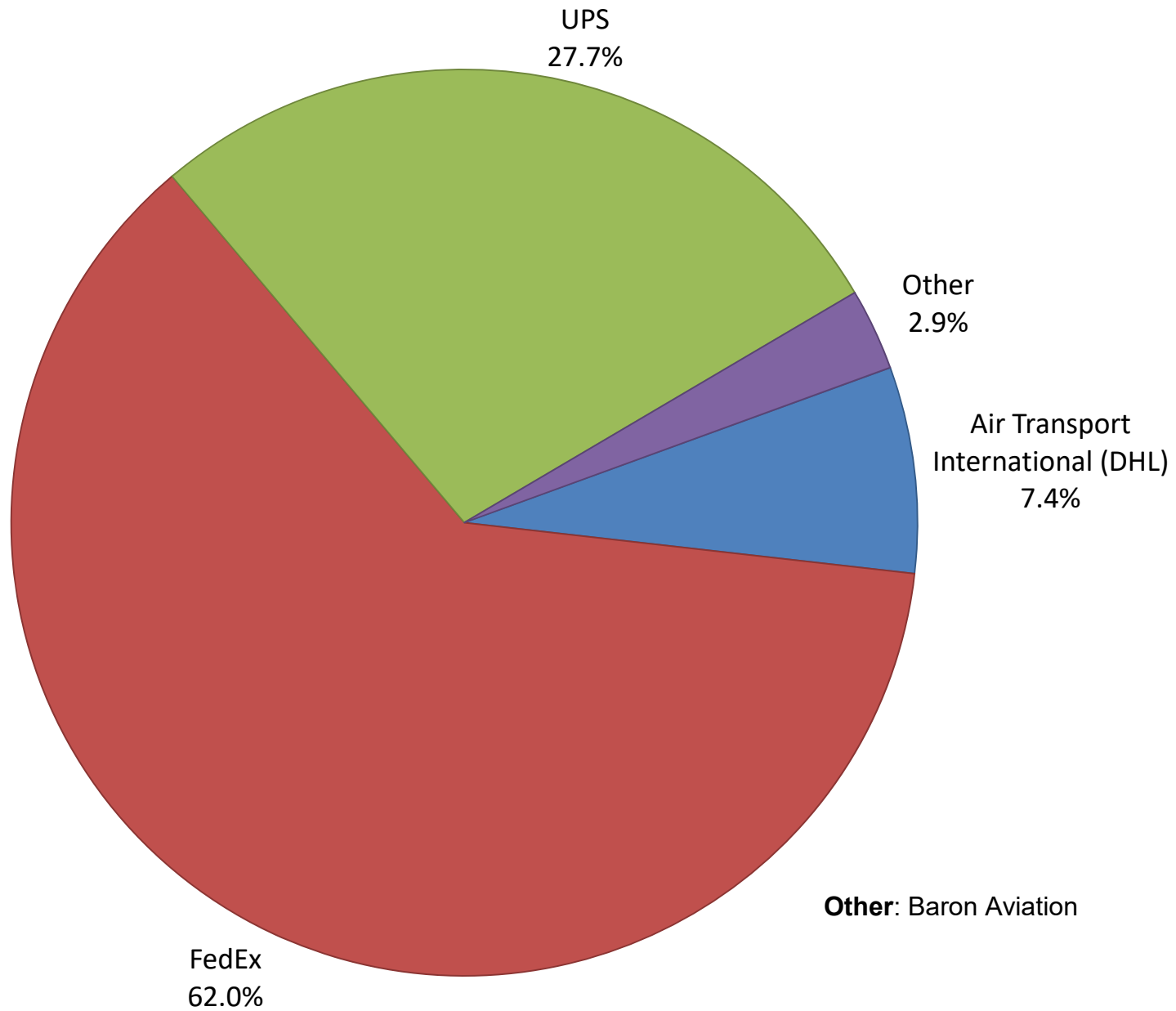
Note: American/US Airways, Delta and United Airlines percentages include Affiliates.

**AUS Belly Freight Market Shares
November 2018**

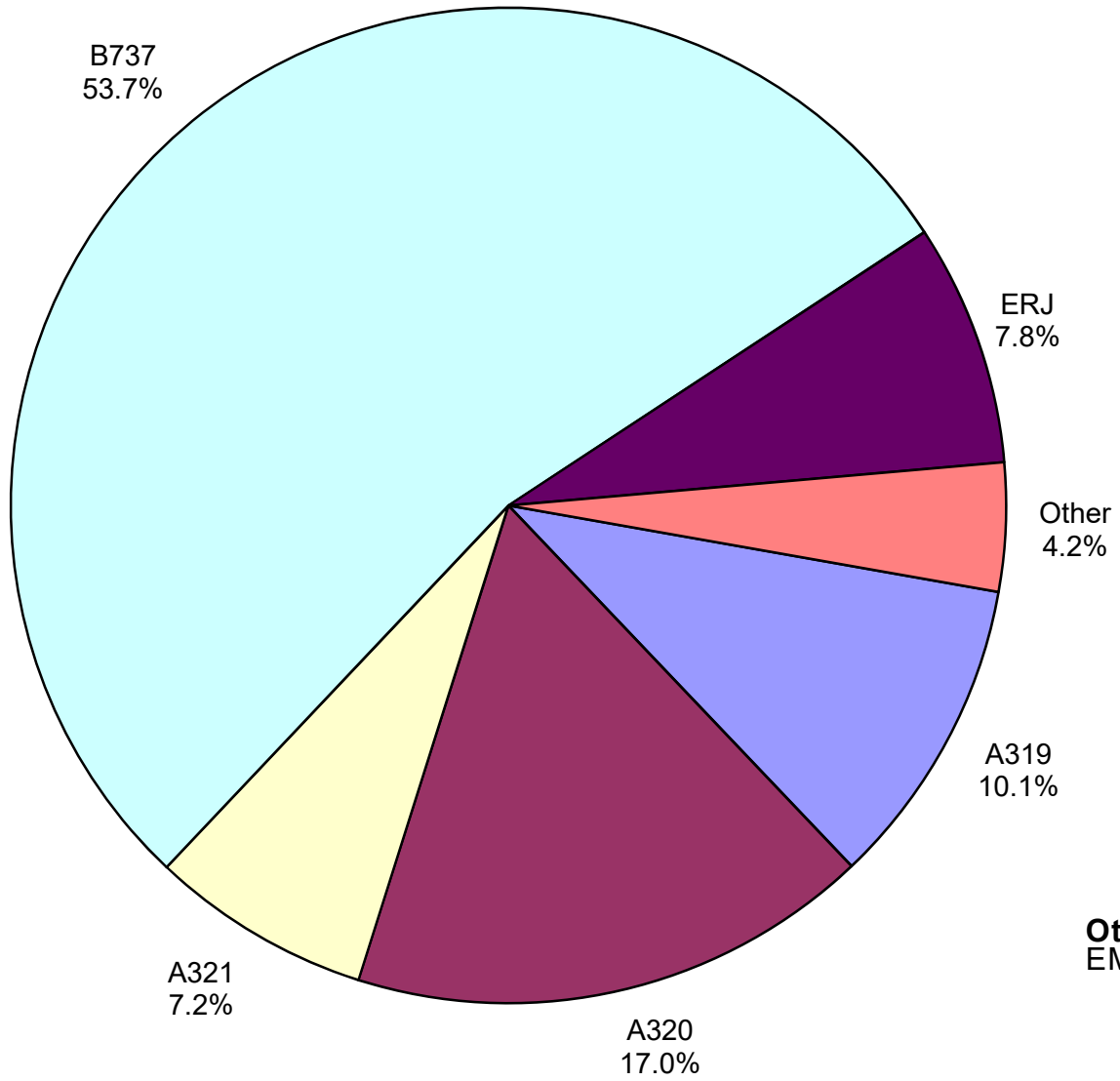


Other = Alaska Airlines and American Airlines

Air Cargo Market Share November 2018

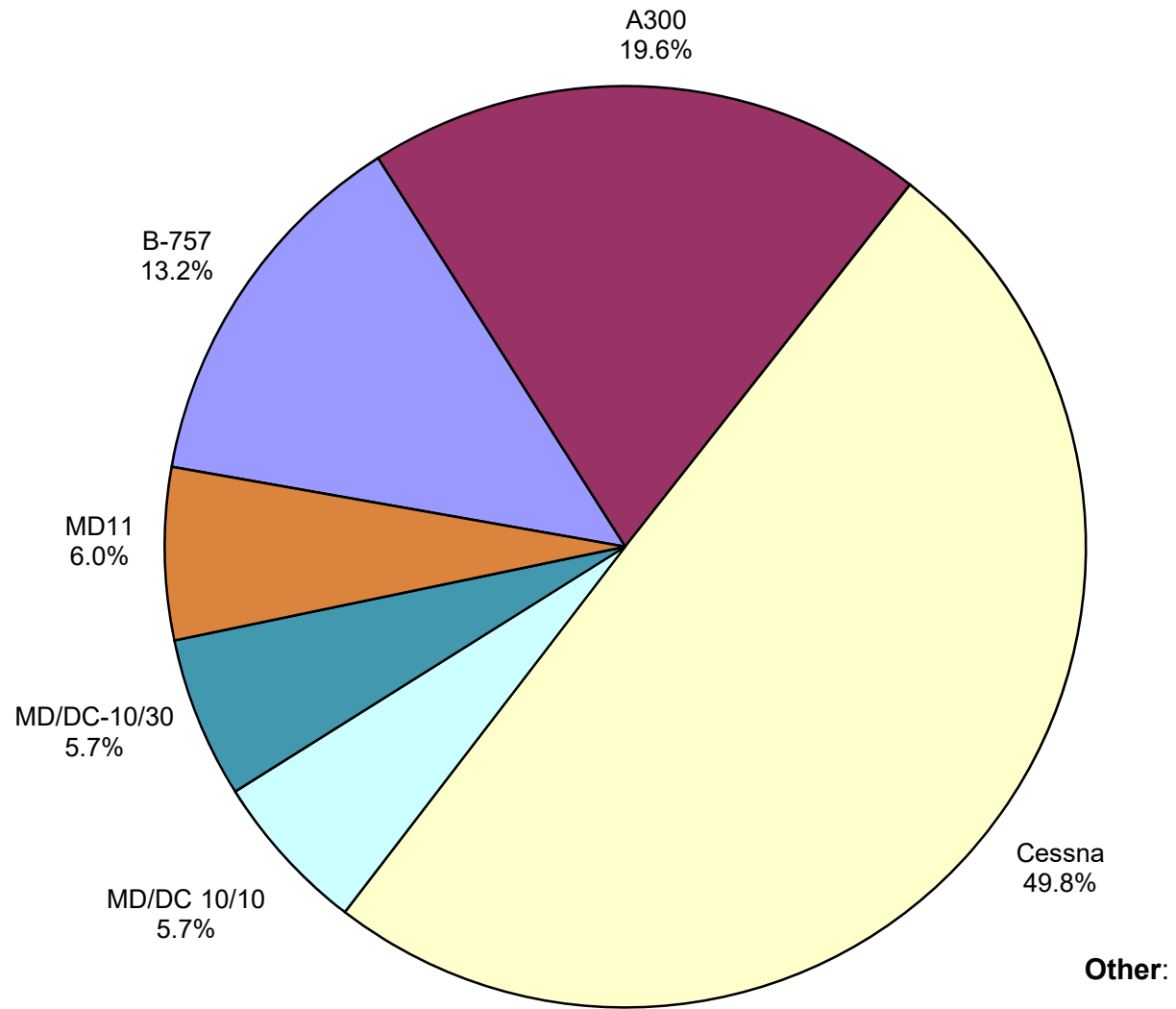


**AUS Scheduled Passenger Aircraft Fleet Mix
November 2018**



Other: B-717, B-777, CRJ,
EMB and MD-83

**AUS Scheduled Cargo Aircraft Fleet Mix
November 2018**



Austin-Bergstrom International Airport

PAX Detail Report - November, 2018

Company	11/2018	11/2017	Period		YTD 2018	YTD 2017	YTD		2018 Share	2017 Share	Share Diff
			Difference	Change			Difference	Change			
ABC Aerolineas S.A. de C.V.	0	0	0	0.0	129	0	129	0.0	0.0	0.0	0.0
Aerovías de Mexico S.A. de C.V.	3,765	3,740	25	0.7	39,398	34,253	5,145	15.0	0.3	0.3	0.0
Air Canada	4,684	3,618	1,066	29.5	44,591	38,464	6,127	15.9	0.3	0.3	0.0
Alaska Airlines	50,645	29,570	21,075	71.3	511,887	257,102	254,785	99.1	3.5	2.0	1.5
Allegiant Air	16,718	23,754	-7,036	-29.6	260,029	243,876	16,153	6.6	1.8	1.9	-0.1
American Airlines	255,523	227,527	27,996	12.3	2,595,026	2,405,344	189,682	7.9	17.8	18.9	-1.1
British Airways	13,388	10,856	2,532	23.3	157,413	119,141	38,272	32.1	1.1	0.9	0.1
Concesionaria Vuela Compañía de Aviación, S.A.P.I. de C.V.	645	1,135	-490	-43.2	13,908	13,979	-71	-0.5	0.1	0.1	0.0
Condor Airlines	0	0	0	0.0	18,876	19,745	-869	-4.4	0.1	0.2	0.0
Delta Air Lines	174,001	164,839	9,162	5.6	1,936,863	1,635,947	300,916	18.4	13.3	12.9	0.4
Elite Airways, LLC	0	65	-65	-100.0	0	94	-94	-100.0	0.0	0.0	0.0
Frontier Airlines	90,542	42,010	48,532	115.5	1,071,755	433,694	638,061	147.1	7.4	3.4	3.9
Iberia Airlines	0	0	0	0.0	0	245	-245	-100.0	0.0	0.0	0.0
JetBlue Airways	45,020	46,290	-1,270	-2.7	535,077	550,364	-15,287	-2.8	3.7	4.3	-0.7
Miami Air International	0	302	-302	-100.0	779	635	144	22.7	0.0	0.0	0.0
Norwegian Air UK LTD	0	0	0	0.0	54,123	0	54,123	0.0	0.4	0.0	0.4
Scandinavian Airlines	0	0	0	0.0	697	0	697	0.0	0.0	0.0	0.0
Southwest Airlines	499,870	463,864	36,006	7.8	5,112,386	4,724,620	387,766	8.2	35.1	37.2	-2.1
Sun Country Airlines	1,778	1,144	634	55.4	25,362	6,722	18,640	277.3	0.2	0.1	0.1
Swift Air	624	282	342	121.3	2,544	1,554	990	63.7	0.0	0.0	0.0
Texas Sky	0	0	0	0.0	0	604	-604	-100.0	0.0	0.0	0.0
United Airlines	200,827	197,514	3,313	1.7	2,140,676	2,065,757	74,919	3.6	14.7	16.3	-1.6
Vacation Express	0	0	0	0.0	2,758	0	2,758	0.0	0.0	0.0	0.0
VIA Airlines	2,551	371	2,180	587.6	21,383	2,878	18,505	643.0	0.1	0.0	0.1
Virgin America	0	12,910	-12,910	-100.0	11,117	143,638	-132,521	-92.3	0.1	1.1	-1.1
Xtra Airways/Casino Express	0	0	0	0.0	0	136	-136	-100.0	0.0	0.0	0.0
Report Totals	1,360,581	1,229,791	130,790	10.6%	14,556,777	12,698,792	1,857,985	14.6%			

Statistics Included in Report:

Domestic Passengers:	Enplaned Revenue, Deplaned Revenue, Enplaned Non-Revenue, Deplaned Non-Revenue
International Passengers:	Enplaned Revenue, Deplaned Revenue, Enplaned Non-Revenue, Deplaned Non-Revenue
International Pre-Cleared Passengers:	Enplaned Revenue, Deplaned Revenue, Enplaned Non-Revenue, Deplaned Non-Revenue
South Terminal Domestic Passengers:	Enplaned Revenue, Deplaned Revenue, Enplaned Non-Revenue, Deplaned Non-Revenue

Austin-Bergstrom International Airport

Summary Landing Report

Landing Type: Total

Month	2018		2017		2016		% Change 2018 - 2017		% Change 2017 - 2016	
	Count	Weight	Count	Weight	Count	Weight	Count	Weight	Count	Weight
January	5,086	688,923,110	4,768	612,688,871	4,622	560,718,408	6.67%	12.44%	3.16%	9.27%
February	4,706	637,500,756	4,357	552,711,639	4,387	527,452,920	8.01%	15.34%	-0.68%	4.79%
March	5,643	760,648,260	5,307	685,661,659	5,151	639,655,137	6.33%	10.94%	3.03%	7.19%
April	5,797	793,367,736	5,179	689,402,051	4,892	614,643,711	11.93%	15.08%	5.87%	12.16%
May	6,117	831,431,763	5,529	736,484,083	5,096	630,853,941	10.63%	12.89%	8.50%	16.74%
June	6,211	852,438,818	5,603	752,628,599	5,179	651,537,449	10.85%	13.26%	8.19%	15.52%
July	6,346	869,502,671	5,698	763,088,836	5,233	663,015,597	11.37%	13.95%	8.89%	15.09%
August	6,245	861,046,997	5,490	741,110,019	5,181	660,099,361	13.75%	16.18%	5.96%	12.27%
September	5,737	790,731,351	5,046	679,381,339	4,738	623,397,035	13.69%	16.39%	6.50%	8.98%
October	6,078	846,310,860	5,448	743,973,610	4,923	649,182,343	11.56%	13.76%	10.66%	14.60%
November	5,684	780,994,101	5,289	718,179,948	4,775	624,303,554	7.47%	8.75%	10.76%	15.04%
December			5,442	737,424,963	4,893	629,611,090			11.22%	17.12%
Totals for Selected Period	63,650	8,712,896,423	57,714	7,675,310,654	54,177	6,844,859,456	10.29%	13.52%	6.53%	12.13%
Yearly Totals	63,650	8,712,896,423	63,156	8,412,735,617	59,070	7,474,470,546			6.92%	12.55%