

**Austin-Bergstrom International Airport  
Aviation Activity Report  
Calendar Year 2018 vs 2017**

**Combined Terminals**

	12/2018	12/2017	Percent Change	1/2018 - 12/2018	1/2017 - 12/2017	Percent Change
<b>ABIA</b>						
<b>Total Passenger Activity</b>						
Domestic Enplaned Revenue	579,913	571,768	1.42	7,336,603	6,538,285	12.21
Domestic Deplaned Revenue	552,697	541,042	2.15	7,314,338	6,489,151	12.72
International Enplaned Revenue	12,882	12,014	7.22	190,772	143,011	33.40
International Deplaned Revenue	11,983	10,873	10.21	194,381	142,708	36.21
Domestic Enplaned Non-Revenue	13,131	13,395	-1.97	173,460	161,702	7.27
Domestic Deplaned Non-Revenue	12,759	12,809	-0.39	166,632	154,379	7.94
International Enplaned Non-Revenue	120	99	21.21	1,472	1,181	24.64
International Deplaned Non-Revenue	95	96	-1.04	1,252	1,007	24.33
Intl Enplaned Pre-Cleared Revenue	2,149	1,729	24.29	23,216	20,158	15.17
Intl Deplaned Pre-Cleared Revenue	2,342	1,802	29.97	25,179	21,316	18.12
Intl Enplaned Pre-Cleared Non-Revenue	20	17	17.65	357	276	29.35
Intl Deplaned Pre-Cleared Non-Revenue	24	29	-17.24	374	291	28.52
South Terminal Domestic Enplaned Revenue	37,857	12,848	194.65	195,697	108,451	80.45
South Terminal Domestic Deplaned Revenue	36,928	11,985	208.12	195,692	107,309	82.36
South Terminal Domestic Enplaned Non-Revenue	109	3	3,533.33	220	51	331.37
South Terminal Domestic Deplaned Non-Revenue	126	4	3,050.00	267	29	820.69
<b>ABIA Passenger Totals</b>	<b>1,263,135</b>	<b>1,190,513</b>	<b>6.10</b>	<b>15,819,912</b>	<b>13,889,305</b>	<b>13.90</b>
<i>ABIA Enplaned Passenger Totals</i>	<i>646,181</i>	<i>611,873</i>	<i>5.61</i>	<i>7,921,797</i>	<i>6,973,115</i>	<i>13.60</i>
<i>ABIA Deplaned Passenger Totals</i>	<i>616,954</i>	<i>578,640</i>	<i>6.62</i>	<i>7,898,115</i>	<i>6,916,190</i>	<i>14.20</i>
<i>ABIA Domestic Passenger Totals</i>	<i>1,233,520</i>	<i>1,163,854</i>	<i>5.99</i>	<i>15,382,909</i>	<i>13,559,357</i>	<i>13.45</i>
<i>ABIA International Passenger Totals</i>	<i>29,615</i>	<i>26,659</i>	<i>11.09</i>	<i>437,003</i>	<i>329,948</i>	<i>32.45</i>
<b>CURRENT PASSENGER RECORD = 1,511,634 RECORD SET = JULY 2018</b>						
<b>Total Aircraft Operations</b>						
Air Carrier	10,890	10,608	2.66	134,372	123,441	8.86
Commuter & Air Taxi	1,266	1,311	-3.43	17,465	15,334	13.90
Military	643	557	15.44	9,756	9,619	1.42
General Aviation						
Itinerant	3,490	3,356	3.99	47,158	48,881	-3.52
Local	6	124	-95.16	1,329	2,357	-43.61
Total G.A.	<b>3,496</b>	<b>3,480</b>	<b>0.46</b>	<b>48,487</b>	<b>51,238</b>	<b>-5.37</b>
<b>Total Operations</b>	<b>16,295</b>	<b>15,956</b>	<b>2.12</b>	<b>210,080</b>	<b>199,632</b>	<b>5.23</b>

**Austin-Bergstrom International Airport  
Aviation Activity Report  
Calendar Year 2018 vs 2017**

**By Terminal**

	12/2018	12/2017	Percent Change	1/2018 - 12/2018	1/2017 - 12/2017	Percent Change
<b><u>Barbara Jordan Terminal (BJT)</u></b>						
<b>Passenger Activity</b>						
Domestic Enplaned Revenue	579,913	571,768	1.42	7,336,603	6,538,285	12.21
Domestic Deplaned Revenue	552,697	541,042	2.15	7,314,338	6,489,151	12.72
International Enplaned Revenue	12,882	12,014	7.22	190,772	143,011	33.40
International Deplaned Revenue	11,983	10,873	10.21	194,381	142,708	36.21
Domestic Enplaned Non-Revenue	13,131	13,395	-1.97	173,460	161,702	7.27
Domestic Deplaned Non-Revenue	12,759	12,809	-0.39	166,632	154,379	7.94
International Enplaned Non-Revenue	120	99	21.21	1,472	1,181	24.64
International Deplaned Non-Revenue	95	96	-1.04	1,252	1,007	24.33
Intl Enplaned Pre-Cleared Revenue	2,149	1,729	24.29	23,216	20,158	15.17
Intl Deplaned Pre-Cleared Revenue	2,342	1,802	29.97	25,179	21,316	18.12
Intl Enplaned Pre-Cleared Non-Revenue	20	17	17.65	357	276	29.35
Intl Deplaned Pre-Cleared Non-Revenue	24	29	-17.24	374	291	28.52
<b>Barbara Jordan Terminal Passenger Totals</b>	<b>1,188,115</b>	<b>1,165,673</b>	<b>1.93</b>	<b>15,428,036</b>	<b>13,673,465</b>	<b>12.83</b>
<i>BJT Enplaned Passenger Totals</i>	<i>608,215</i>	<i>599,022</i>	<i>1.53</i>	<i>7,725,880</i>	<i>6,864,613</i>	<i>12.55</i>
<i>BJT Deplaned Passenger Totals</i>	<i>579,900</i>	<i>566,651</i>	<i>2.34</i>	<i>7,702,156</i>	<i>6,808,852</i>	<i>13.12</i>
<i>BJT Domestic Passenger Totals</i>	<i>1,158,500</i>	<i>1,139,014</i>	<i>1.71</i>	<i>14,991,033</i>	<i>13,343,517</i>	<i>12.35</i>
<i>BJT International Passenger Totals</i>	<i>29,615</i>	<i>26,659</i>	<i>11.09</i>	<i>437,003</i>	<i>329,948</i>	<i>32.45</i>
<b><u>South Terminal (ST)</u></b>						
<b>Passenger Activity</b>						
South Terminal Domestic Enplaned Revenue	37,857	12,848	194.65	195,697	108,451	80.45
South Terminal Domestic Deplaned Revenue	36,928	11,985	208.12	195,692	107,309	82.36
South Terminal Domestic Enplaned Non-Revenue	109	3	3533.33	220	51	331.37
South Terminal Domestic Deplaned Non-Revenue	126	4	3050.00	267	29	820.69
<b>South Terminal Passenger Totals</b>	<b>75,020</b>	<b>24,840</b>	<b>202.01</b>	<b>391,876</b>	<b>215,840</b>	<b>81.56</b>
<i>ST Enplaned Passenger Totals</i>	<i>37,966</i>	<i>12,851</i>	<i>195.43</i>	<i>195,917</i>	<i>108,502</i>	<i>80.57</i>
<i>ST Deplaned Passenger Totals</i>	<i>37,054</i>	<i>11,989</i>	<i>209.07</i>	<i>195,959</i>	<i>107,338</i>	<i>82.56</i>

**Austin-Bergstrom International Airport  
Aviation Activity Report  
Calendar Year 2018 vs 2017**

	12/2018	12/2017	Percent Change	1/2018 - 12/2018	1/2017 - 12/2017	Percent Change
<b><u>Total Cargo Activity</u></b>						
<b>Mail</b>						
Domestic Enplaned Mail	174,862	235,378	-25.71	2,365,233	2,342,691	0.96
Domestic Deplaned Mail	616,323	469,510	31.27	5,418,959	4,669,097	16.06
International Enplaned Mail	0	0	0.00	0	0	0.00
International Deplaned Mail	0	0	0.00	0	2	-100.00
South Terminal-Domestic Enplaned Mail	0	0	0.00	0	0	0.00
South Terminal-Domestic Deplaned Mail	0	0	0.00	0	0	0.00
<b>Mail Totals</b>	<b>791,185</b>	<b>704,888</b>	<b>12.24</b>	<b>7,784,192</b>	<b>7,011,790</b>	<b>11.02</b>
<b>Cargo</b>						
Domestic Enplaned Cargo	4,983,423	5,102,655	-2.34	59,286,968	61,468,707	-3.55
Domestic Deplaned Cargo	7,114,403	7,289,487	-2.40	83,691,683	84,821,679	-1.33
International Enplaned Cargo	130,464	693,009	-81.17	7,793,415	9,222,215	-15.49
International Deplaned Cargo	200,585	284,869	-29.59	3,631,265	5,163,334	-29.67
South Terminal-Domestic Enplaned Cargo	0	0	0.00	0	0	0.00
South Terminal-Domestic Deplaned Cargo	0	0	0.00	0	0	0.00
<b>Cargo Totals</b>	<b>12,428,875</b>	<b>13,370,020</b>	<b>-7.04</b>	<b>154,403,331</b>	<b>160,675,935</b>	<b>-3.90</b>
<b>Belly Freight</b>						
Domestic Enplaned Belly Freight	272,639	303,970	-10.31	3,564,993	3,431,250	3.90
Domestic Deplaned Belly Freight	443,880	473,280	-6.21	5,871,453	6,060,077	-3.11
International Enplaned Belly Freight	201,982	321,862	-37.25	3,114,667	3,384,848	-7.98
International Deplaned Belly Freight	873,268	740,648	17.91	7,799,776	8,798,737	-11.35
South Terminal-Domestic Enplaned Belly Frght	0	0	0.00	0	0	0.00
South Terminal-Domestic Deplaned Belly Frght	0	0	0.00	0	0	0.00
<b>Belly Freight Totals</b>	<b>1,791,769</b>	<b>1,839,760</b>	<b>-2.61</b>	<b>20,350,889</b>	<b>21,674,912</b>	<b>-6.11</b>
<b>Cargo Totals (Mail, Cargo, Belly Freight)</b>	<b>15,011,829</b>	<b>15,914,668</b>	<b>-5.67</b>	<b>182,538,412</b>	<b>189,362,637</b>	<b>-3.60</b>
<i>Enplaned Cargo Totals</i>	<i>5,763,370</i>	<i>6,656,874</i>	<i>-13.42</i>	<i>76,125,276</i>	<i>79,849,711</i>	<i>-4.66</i>
<i>Deplaned Cargo Totals</i>	<i>9,248,459</i>	<i>9,257,794</i>	<i>-0.10</i>	<i>106,413,136</i>	<i>109,512,926</i>	<i>-2.83</i>
<i>Domestic Cargo Totals</i>	<i>13,605,530</i>	<i>13,874,280</i>	<i>-1.94</i>	<i>160,199,289</i>	<i>162,793,501</i>	<i>-1.59</i>
<i>International Cargo Totals</i>	<i>1,406,299</i>	<i>2,040,388</i>	<i>-31.08</i>	<i>22,339,123</i>	<i>26,569,136</i>	<i>-15.92</i>

CURRENT CARGO RECORD = 40,215,518

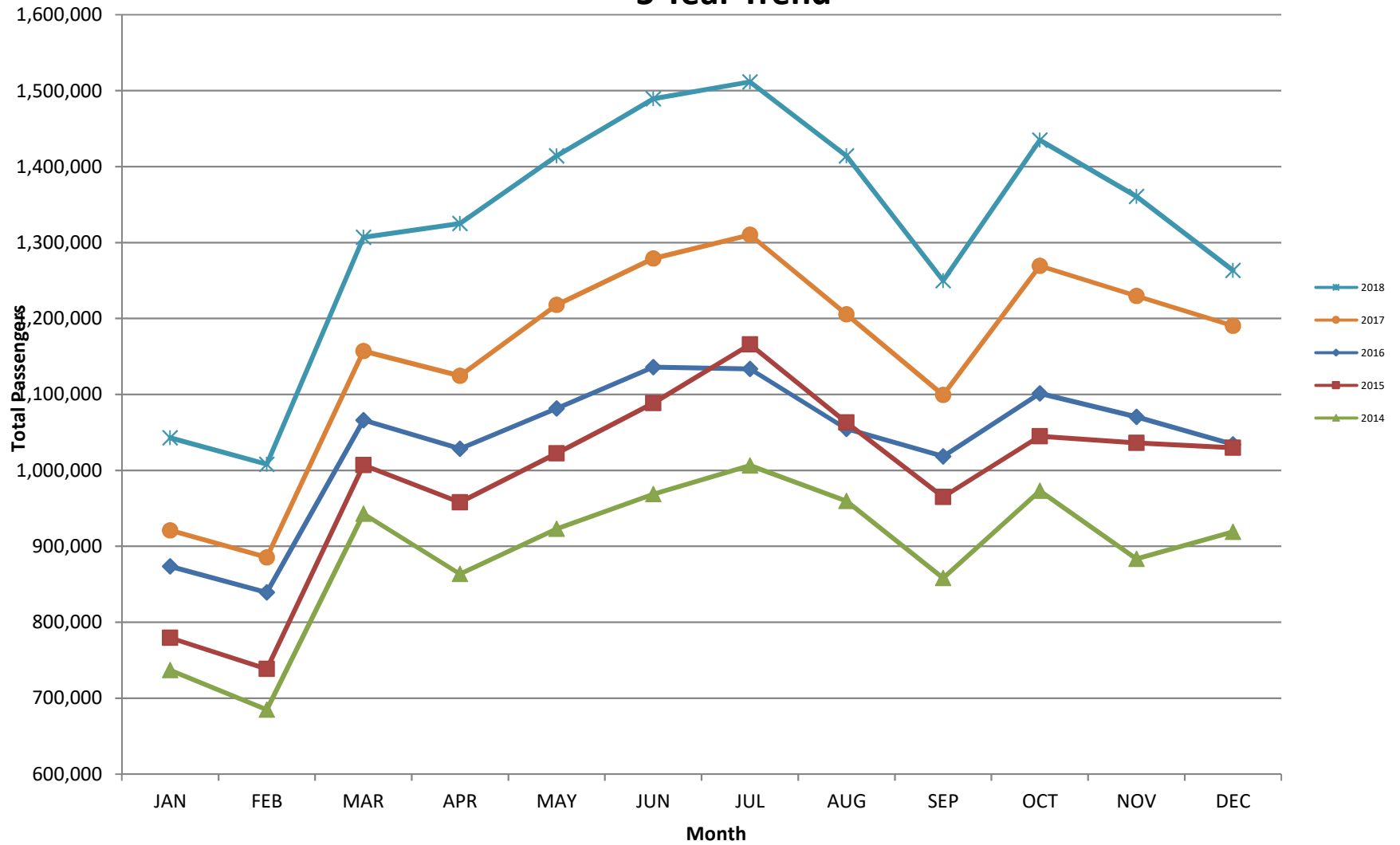
RECORD SET = MARCH 2001

**AUS – Airline Codes**  
December 2018

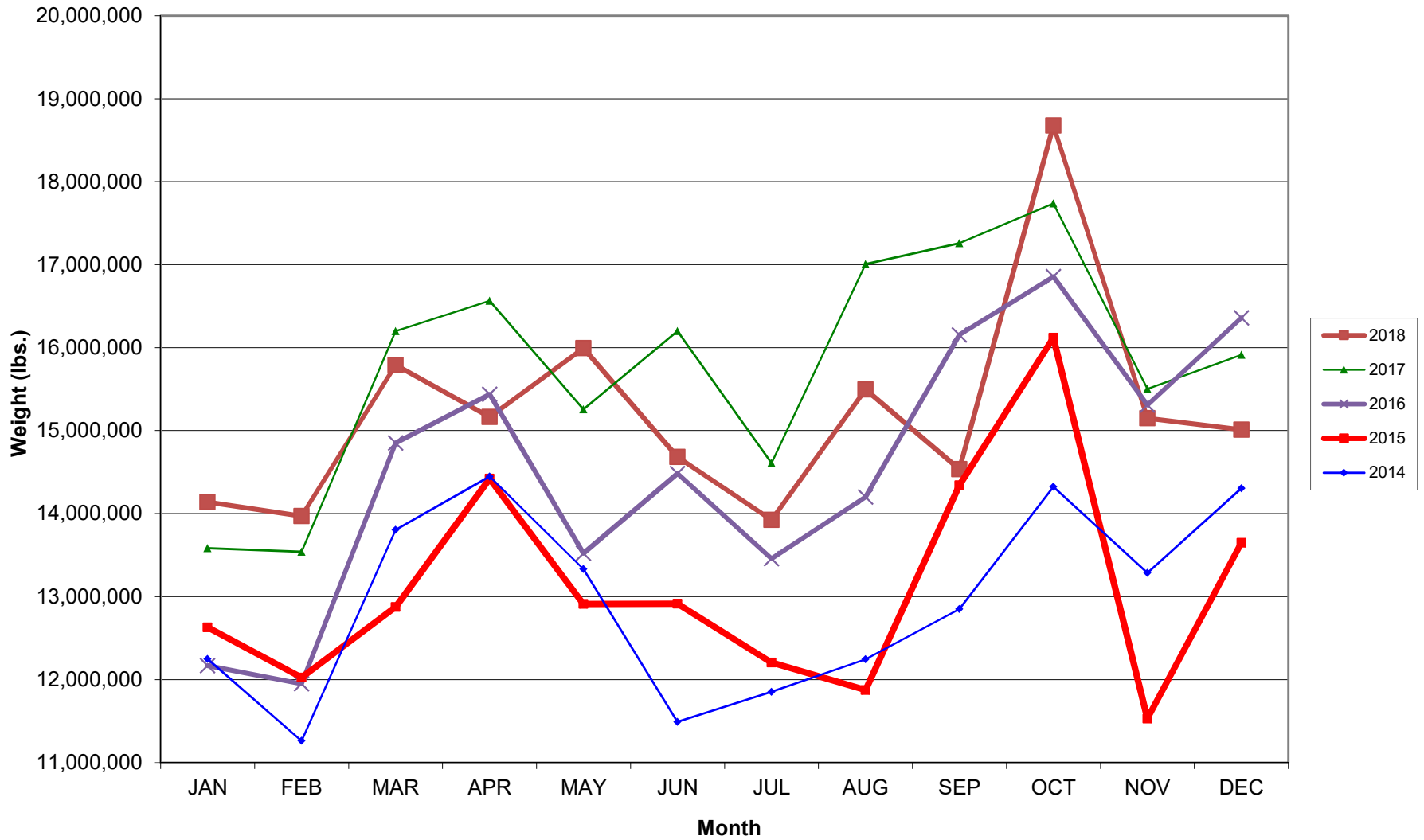
<b><u>Code</u></b>	<b><u>Carrier</u></b>
AM	Aerovias de Mexico S.A. de C.V. dba AeroMexico Airlines
AC	Air Canada
AS	Alaska Airlines, Inc. (Includes Virgin America. Merger effective 2/1/2018)
G4	Allegiant Air, LLC
AA	American Airlines, Inc.
BA	British Airways Plc
Y4	Concesionaria Vuela Compañía de Aviación, S.A.P.I. de C.V dba Volaris
DL	Delta Airlines
F9	Frontier Airlines
B6	JetBlue Airways Corp.
WN	Southwest Airlines
UA	United Airlines, Inc.
VC	VIA Airlines

# AUSTIN PASSENGER TRAFFIC

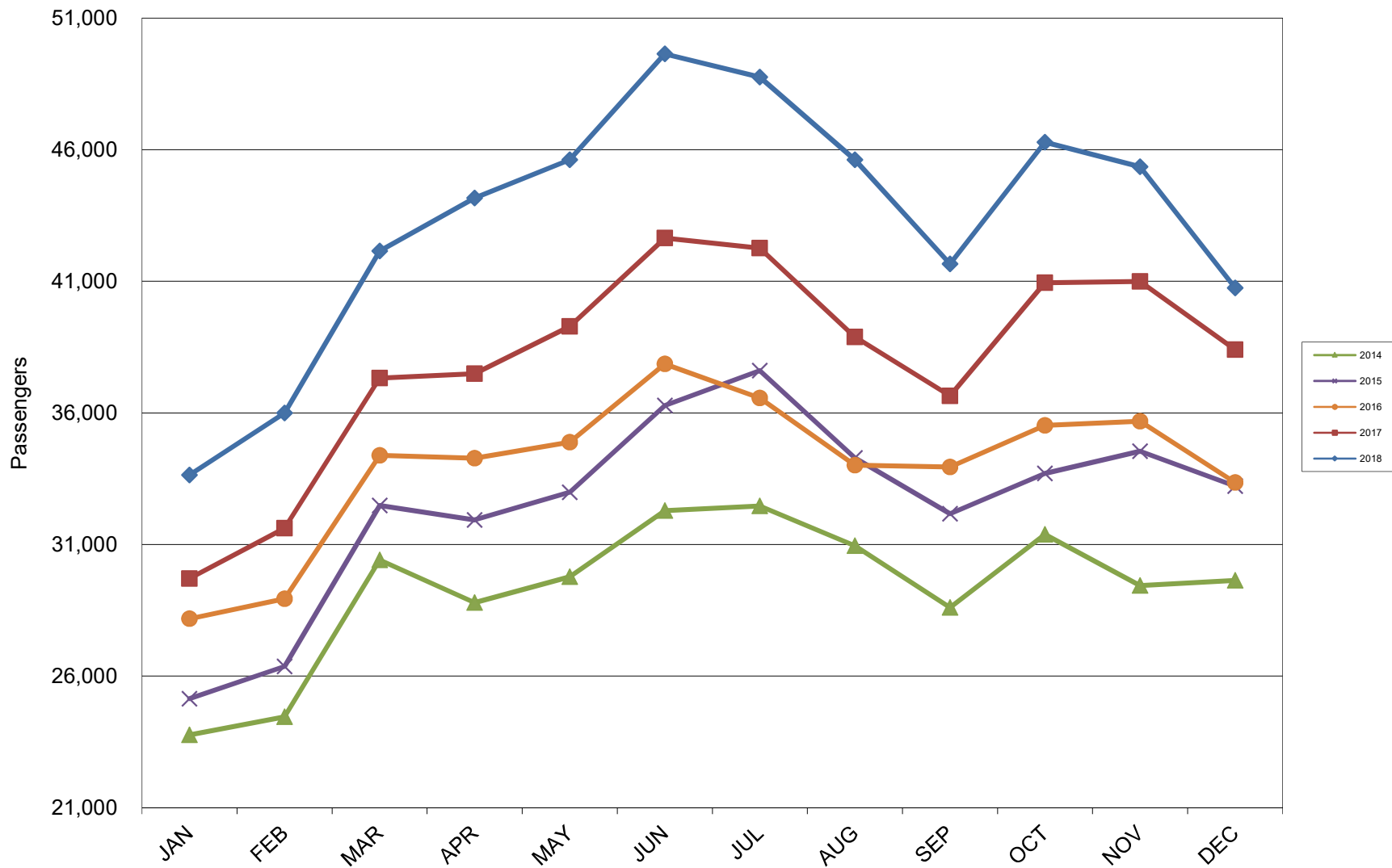
## 5 Year Trend



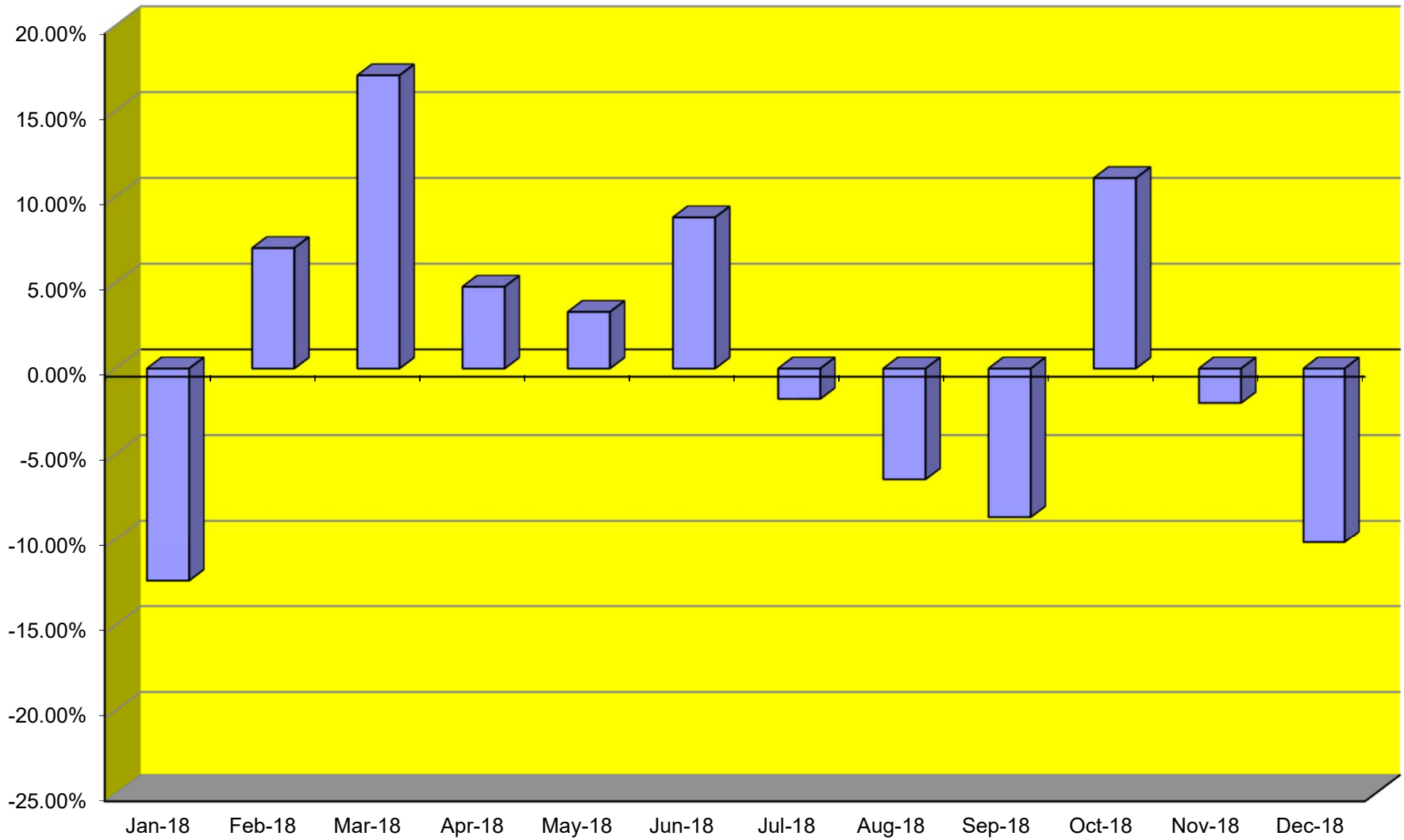
### TOTAL CARGO POUNDAGE - AUSTIN, TEXAS



Average Daily Passengers

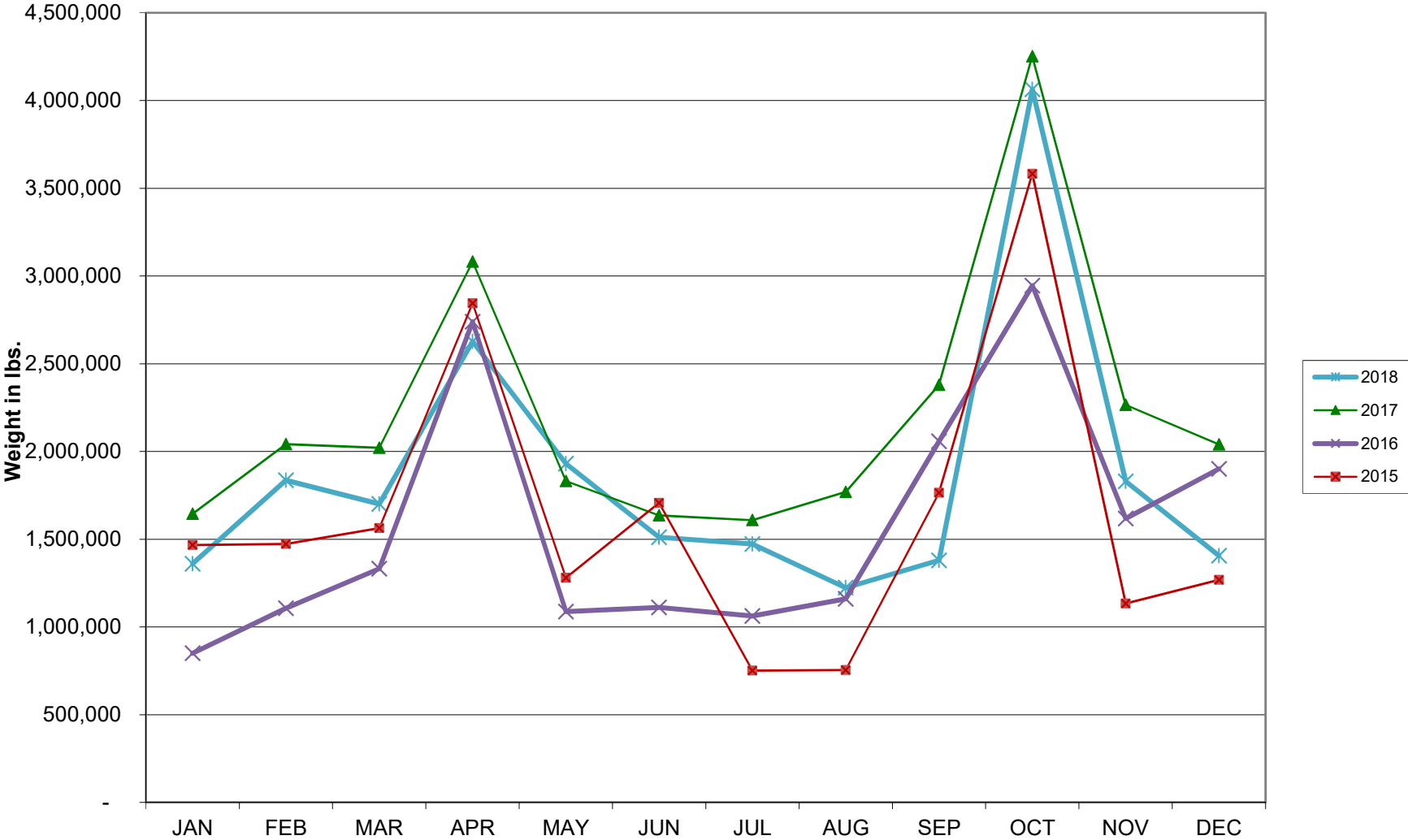


**Monthly % Change in Average Daily Passengers**

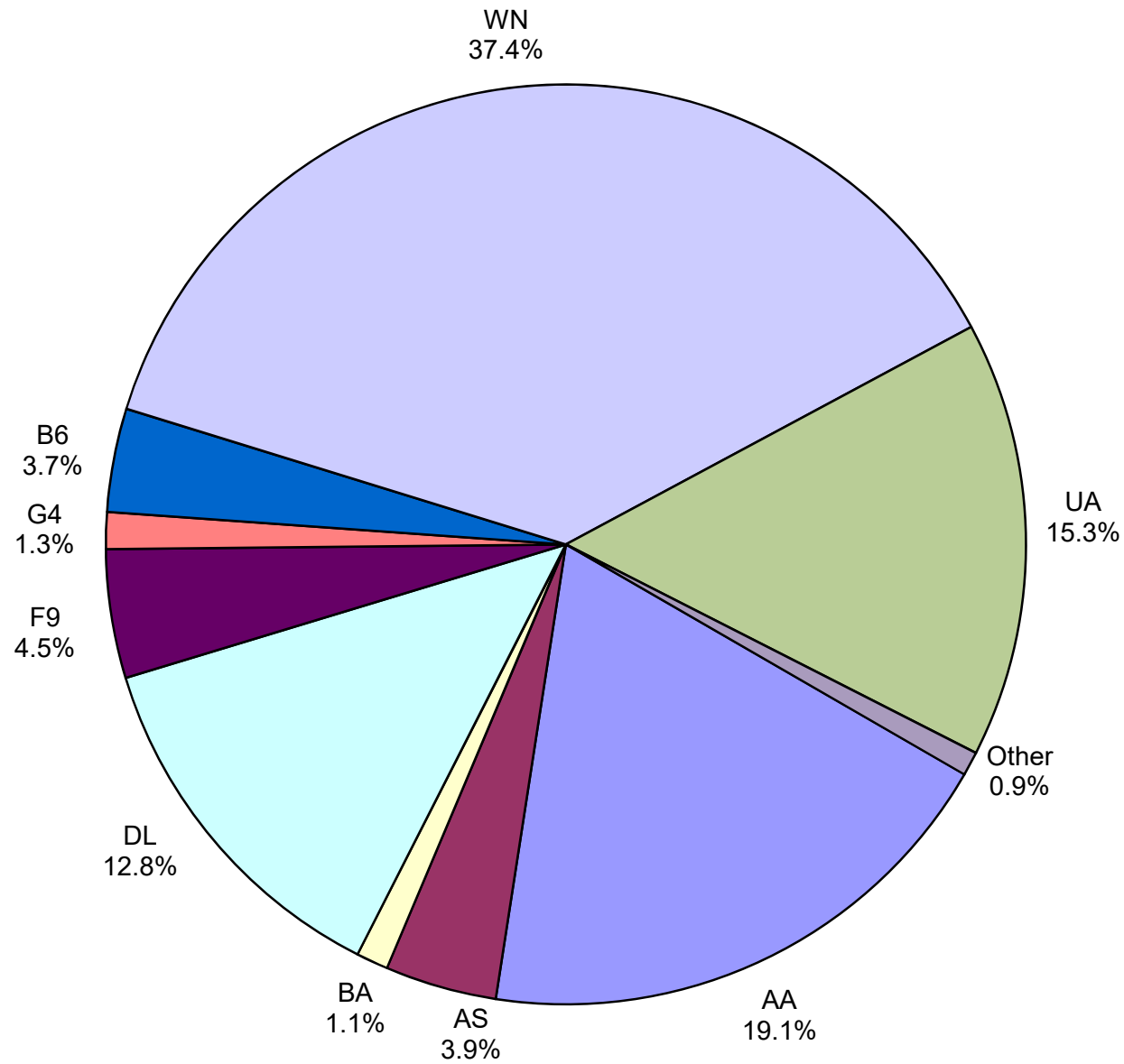




# HISTORY OF INTERNATIONAL AIR CARGO



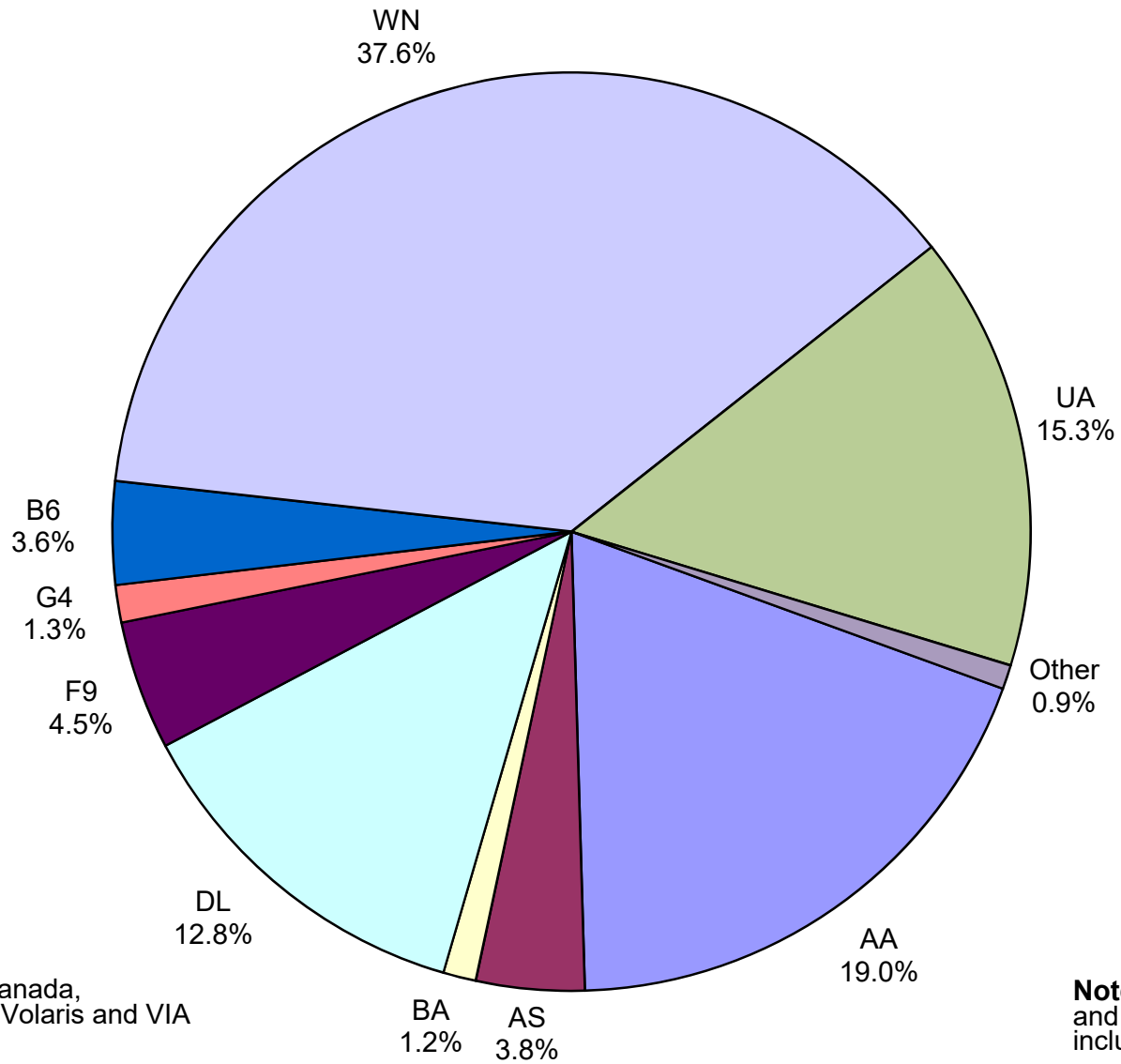
### Total Passengers December 2018



**Other:** Aeromexico, Air Canada LLC,  
VIA Airlines and Concesionaria Vuela dba  
Volaris

**Note:** American, Delta and United Airlines  
percentages include Affiliates.

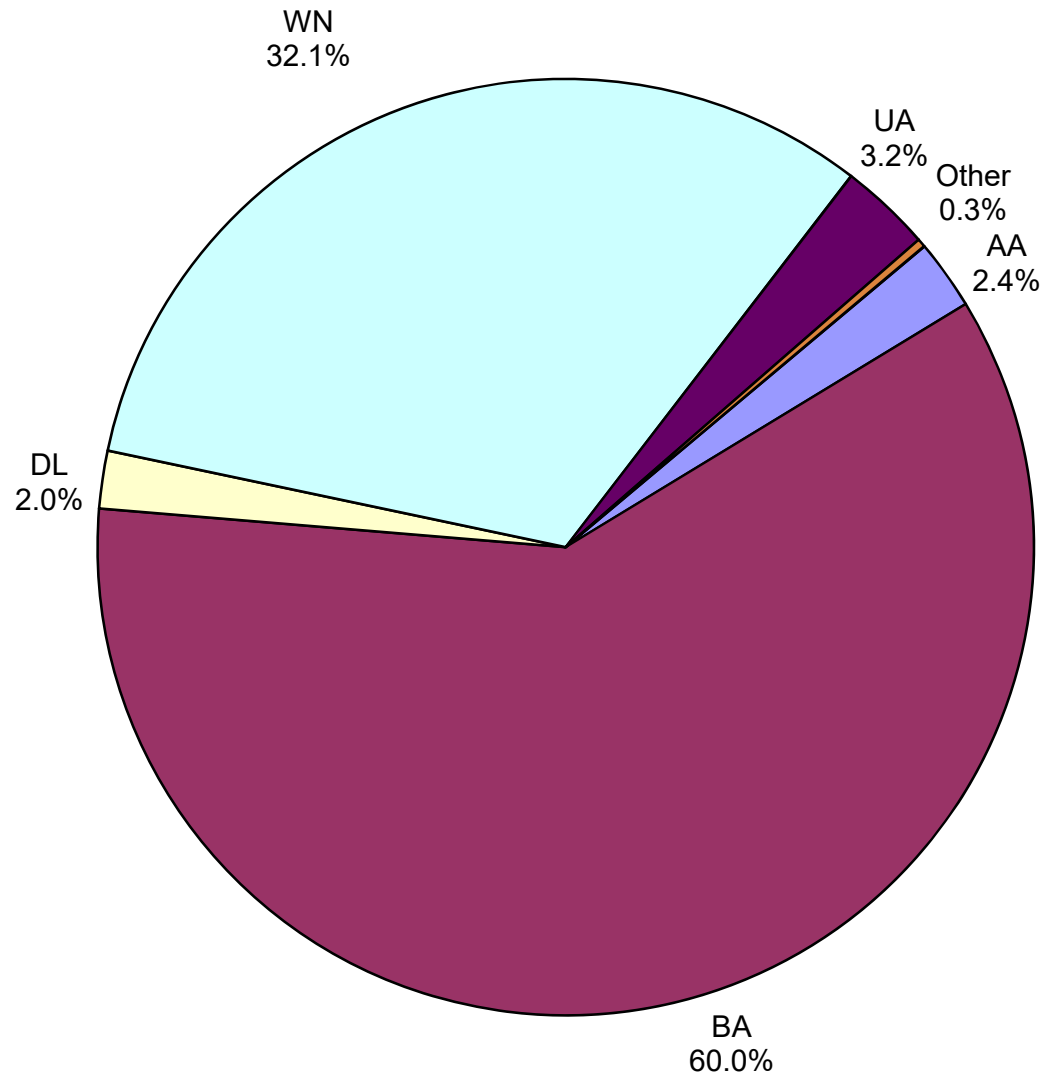
**All Passenger Carriers  
Enplaned Revenue Passengers  
December 2018**



**Other:** Aeromexico, Air Canada, Concesionaria Vuela dba Volaris and VIA Airlines

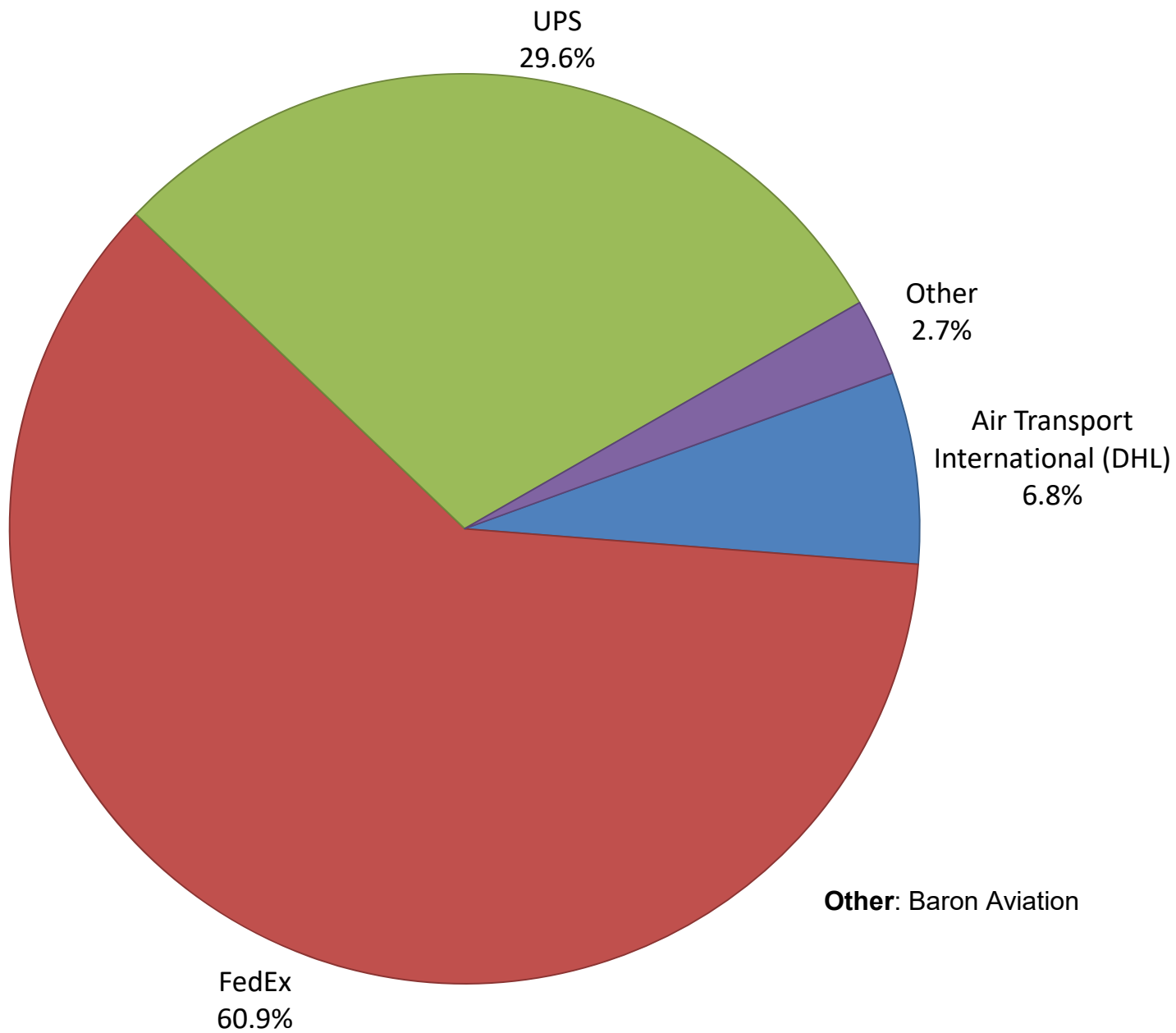
**Note:** American/US Airways, Delta and United Airlines percentages include Affiliates.

**AUS Belly Freight Market Shares  
December 2018**

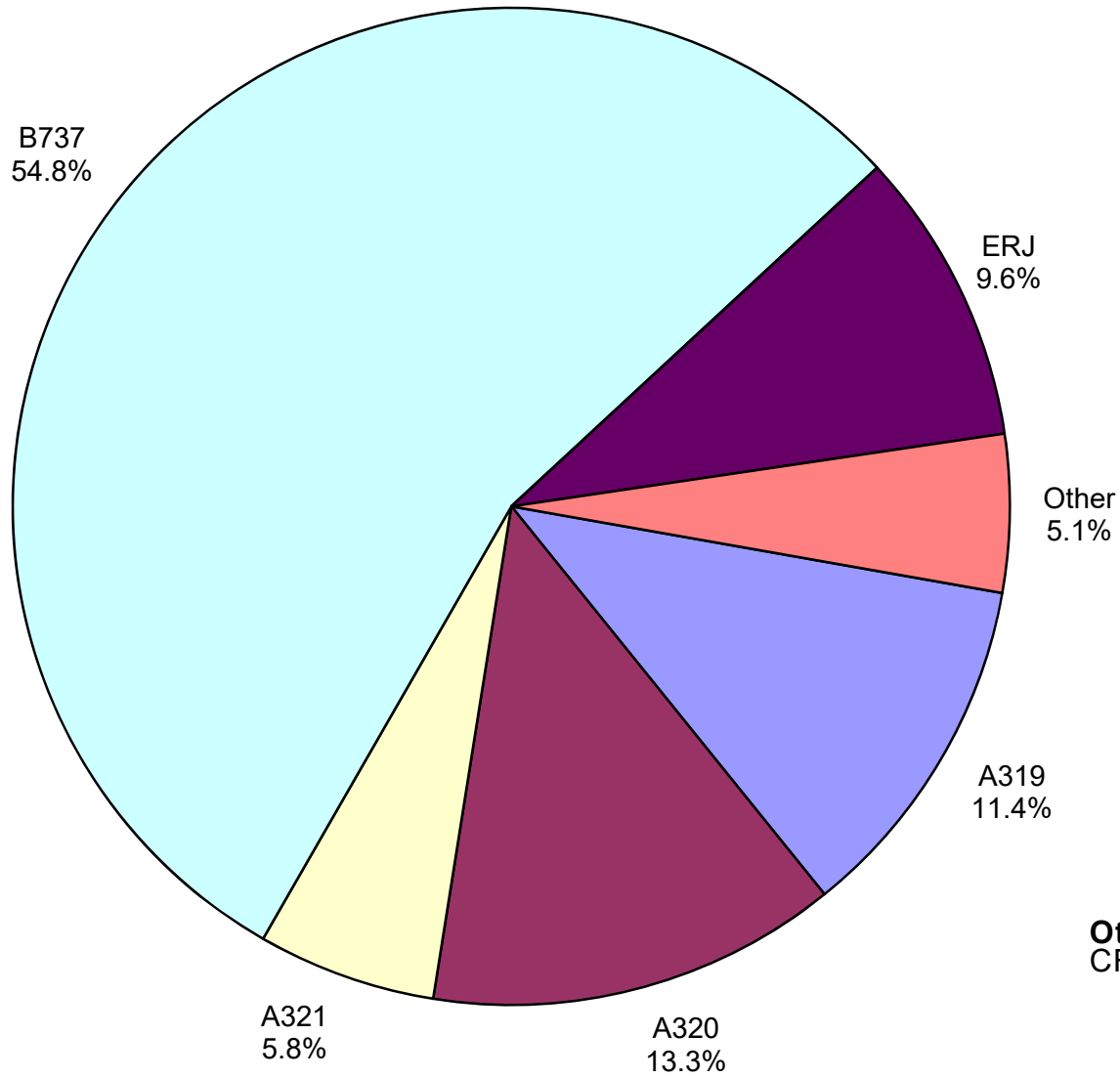


**Other = Alaska Airlines**

# Air Cargo Market Share December 2018

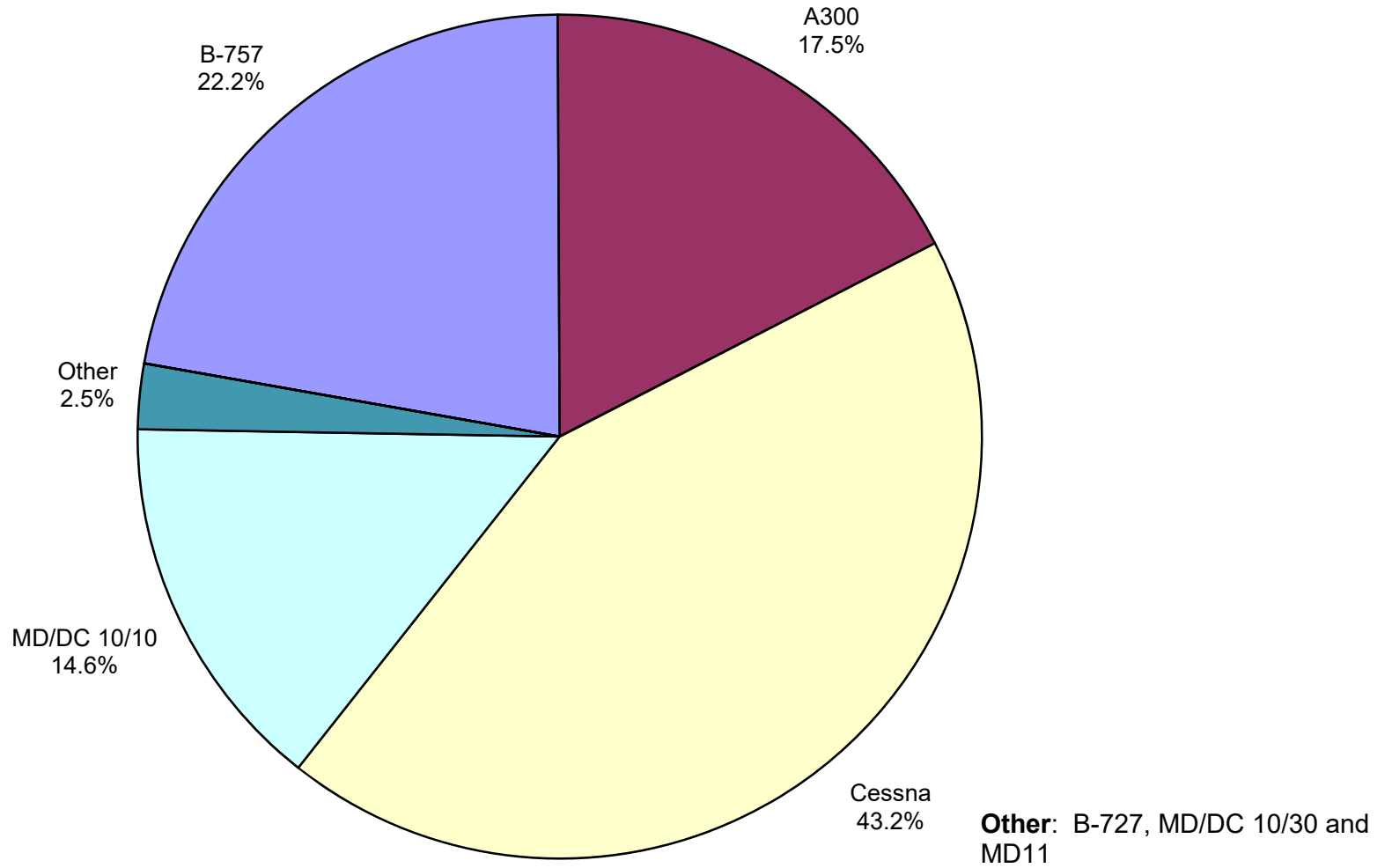


**AUS Scheduled Passenger Aircraft Fleet Mix  
December 2018**



**Other:** B-717, B-757, B-777, CRJ, EMB, MD82 and MD-88

**AUS Scheduled Cargo Aircraft Fleet Mix  
December 2018**



# Austin-Bergstrom International Airport

## PAX Detail Report - December, 2018

Company	12/2018	12/2017	Period		YTD 2018	YTD 2017	YTD		2018 Share	2017 Share	Share Diff
			Difference	Change			Difference	Change			
ABC Aerolineas S.A. de C.V.	0	0	0	0.0	129	0	129	0.0	0.0	0.0	0.0
Aerovías de Mexico S.A. de C.V.	4,259	4,266	-7	-0.2	43,657	38,519	5,138	13.3	0.3	0.3	0.0
Air Canada	4,535	3,577	958	26.8	49,126	42,041	7,085	16.9	0.3	0.3	0.0
Alaska Airlines	49,513	32,447	17,066	52.6	561,400	289,549	271,851	93.9	3.5	2.1	1.5
Allegiant Air	16,267	24,085	-7,818	-32.5	276,296	267,961	8,335	3.1	1.7	1.9	-0.2
American Airlines	241,349	223,229	18,120	8.1	2,836,375	2,628,573	207,802	7.9	17.9	18.9	-1.0
British Airways	14,146	9,779	4,367	44.7	171,559	128,920	42,639	33.1	1.1	0.9	0.2
Concesionaria Vuela Compañía de Aviación, S.A.P.I. de C.V.	279	1,170	-891	-76.2	14,187	15,149	-962	-6.4	0.1	0.1	0.0
Condor Airlines	0	0	0	0.0	18,876	19,745	-869	-4.4	0.1	0.1	0.0
Delta Air Lines	162,117	140,620	21,497	15.3	2,098,980	1,776,567	322,413	18.1	13.3	12.8	0.5
Elite Airways, LLC	0	0	0	0.0	0	94	-94	-100.0	0.0	0.0	0.0
Frontier Airlines	57,186	47,107	10,079	21.4	1,128,941	480,801	648,140	134.8	7.1	3.5	3.7
Iberia Airlines	0	0	0	0.0	0	245	-245	-100.0	0.0	0.0	0.0
JetBlue Airways	45,955	45,825	130	0.3	581,032	596,189	-15,157	-2.5	3.7	4.3	-0.6
Miami Air International	0	0	0	0.0	779	635	144	22.7	0.0	0.0	0.0
Norwegian Air UK LTD	0	0	0	0.0	54,123	0	54,123	0.0	0.3	0.0	0.3
Scandinavian Airlines	0	0	0	0.0	697	0	697	0.0	0.0	0.0	0.0
Southwest Airlines	472,344	448,724	23,620	5.3	5,584,730	5,173,344	411,386	8.0	35.3	37.2	-1.9
Sun Country Airlines	0	221	-221	-100.0	25,362	6,943	18,419	265.3	0.2	0.0	0.1
Swift Air	0	0	0	0.0	2,544	1,554	990	63.7	0.0	0.0	0.0
Texas Sky	0	0	0	0.0	0	604	-604	-100.0	0.0	0.0	0.0
United Airlines	193,618	196,303	-2,685	-1.4	2,334,294	2,262,060	72,234	3.2	14.8	16.3	-1.5
Vacation Express	0	0	0	0.0	2,758	0	2,758	0.0	0.0	0.0	0.0
VIA Airlines	1,567	534	1,033	193.4	22,950	3,412	19,538	572.6	0.1	0.0	0.1
Virgin America	0	12,626	-12,626	-100.0	11,117	156,264	-145,147	-92.9	0.1	1.1	-1.1
Xtra Airways/Casino Express	0	0	0	0.0	0	136	-136	-100.0	0.0	0.0	0.0
<b>Report Totals</b>	1,263,135	1,190,513	72,622	6.1%	15,819,912	13,889,305	1,930,607	13.9%			

### Statistics Included in Report:

Domestic Passengers:	Enplaned Revenue, Deplaned Revenue, Enplaned Non-Revenue, Deplaned Non-Revenue
International Passengers:	Enplaned Revenue, Deplaned Revenue, Enplaned Non-Revenue, Deplaned Non-Revenue
International Pre-Cleared Passengers:	Enplaned Revenue, Deplaned Revenue, Enplaned Non-Revenue, Deplaned Non-Revenue
South Terminal Domestic Passengers:	Enplaned Revenue, Deplaned Revenue, Enplaned Non-Revenue, Deplaned Non-Revenue



# Austin-Bergstrom International Airport

## Summary Landing Report

### Landing Type: Total

Month	2018		2017		2016		% Change 2018 - 2017		% Change 2017 - 2016	
	Count	Weight	Count	Weight	Count	Weight	Count	Weight	Count	Weight
January	5,086	688,923,110	4,768	612,688,871	4,622	560,718,408	6.67%	12.44%	3.16%	9.27%
February	4,706	637,500,756	4,357	552,711,639	4,387	527,452,920	8.01%	15.34%	-0.68%	4.79%
March	5,643	760,648,260	5,307	685,661,659	5,151	639,655,137	6.33%	10.94%	3.03%	7.19%
April	5,797	793,367,736	5,179	689,402,051	4,892	614,643,711	11.93%	15.08%	5.87%	12.16%
May	6,117	831,431,763	5,529	736,484,083	5,096	630,853,941	10.63%	12.89%	8.50%	16.74%
June	6,211	852,438,818	5,603	752,628,599	5,179	651,537,449	10.85%	13.26%	8.19%	15.52%
July	6,346	869,502,671	5,698	763,088,836	5,233	663,015,597	11.37%	13.95%	8.89%	15.09%
August	6,245	861,046,997	5,490	741,110,019	5,181	660,099,361	13.75%	16.18%	5.96%	12.27%
September	5,737	790,731,351	5,046	679,381,339	4,738	623,397,035	13.69%	16.39%	6.50%	8.98%
October	6,078	846,310,860	5,448	743,973,610	4,923	649,182,343	11.56%	13.76%	10.66%	14.60%
November	5,684	780,994,101	5,289	718,179,948	4,775	624,303,554	7.47%	8.75%	10.76%	15.04%
December	5,600	761,317,385	5,442	737,424,963	4,893	629,611,090	2.90%	3.24%	11.22%	17.12%
<b>Totals for Selected Period</b>	69,250	9,474,213,808	63,156	8,412,735,617	59,070	7,474,470,546	9.65%	12.62%	6.92%	12.55%
<b>Yearly Totals</b>	69,250	9,474,213,808	63,156	8,412,735,617	59,070	7,474,470,546			6.92%	12.55%