

Austin-Bergstrom International Airport

Aviation Activity Report

Calendar Year 2016 vs 2015

	06/2016	06/2015	Percent Change	01/2016 - 06/2016	01/2015 - 06/2015	Percent Change
Passenger Activity						
Domestic Enplaned Revenue	555,372	528,686	5.05	2,894,192	2,691,133	7.55
Domestic Deplaned Revenue	529,443	504,300	4.99	2,867,163	2,661,694	7.72
International Enplaned Revenue	12,433	14,840	-16.22	55,807	55,941	-0.24
International Deplaned Revenue	11,756	13,560	-13.30	57,033	54,797	4.08
Domestic Enplaned Non-Revenue	11,423	11,559	-1.18	63,506	62,587	1.47
Domestic Deplaned Non-Revenue	11,515	11,756	-2.05	65,635	61,124	7.38
International Enplaned Non-Revenue	45	78	-42.31	479	495	-3.23
International Deplaned Non-Revenue	40	77	-48.05	471	441	6.80
Intl Enplaned Pre-Cleared Revenue	1,854	1,665	11.35	9,653	2,506	285.20
Intl Deplaned Pre-Cleared Revenue	1,862	1,843	1.03	10,243	2,619	291.10
Intl Enplaned Pre-Cleared Non-Revenue	24	20	20.00	152	37	310.81
Intl Deplaned Pre-Cleared Non-Revenue	29	15	93.33	168	29	479.31
Passenger Totals	1,135,796	1,088,399	4.35	6,024,502	5,593,403	7.71
<i>Enplaned Passenger Totals</i>	<i>581,151</i>	<i>556,848</i>	<i>4.36</i>	<i>3,023,789</i>	<i>2,812,699</i>	<i>7.50</i>
<i>Deplaned Passenger Totals</i>	<i>554,645</i>	<i>531,551</i>	<i>4.34</i>	<i>3,000,713</i>	<i>2,780,704</i>	<i>7.91</i>
<i>Domestic Passenger Totals</i>	<i>1,107,753</i>	<i>1,056,301</i>	<i>4.87</i>	<i>5,890,496</i>	<i>5,476,538</i>	<i>7.55</i>
<i>International Passenger Totals</i>	<i>28,043</i>	<i>32,098</i>	<i>-12.63</i>	<i>134,006</i>	<i>116,865</i>	<i>14.66</i>

CURRENT PASSENGER RECORD = 1,165,811 RECORD SET = JULY 2015

Aircraft Operations

Air Carrier	10,033	10,035	-0.02	56,888	54,983	3.46
Commuter & Air Taxi	1,177	1,173	0.34	7,351	7,649	-3.90
Military	921	911	1.10	5,138	3,807	34.96
General Aviation						
Itinerant	4,171	4,051	2.96	24,439	24,237	0.83
Local	278	448	-37.95	1,378	1,685	-18.22
Total G.A.	4,449	4,499	-1.11	25,817	25,922	-0.41
Total Operations	16,580	16,618	-0.23	95,194	92,361	3.07

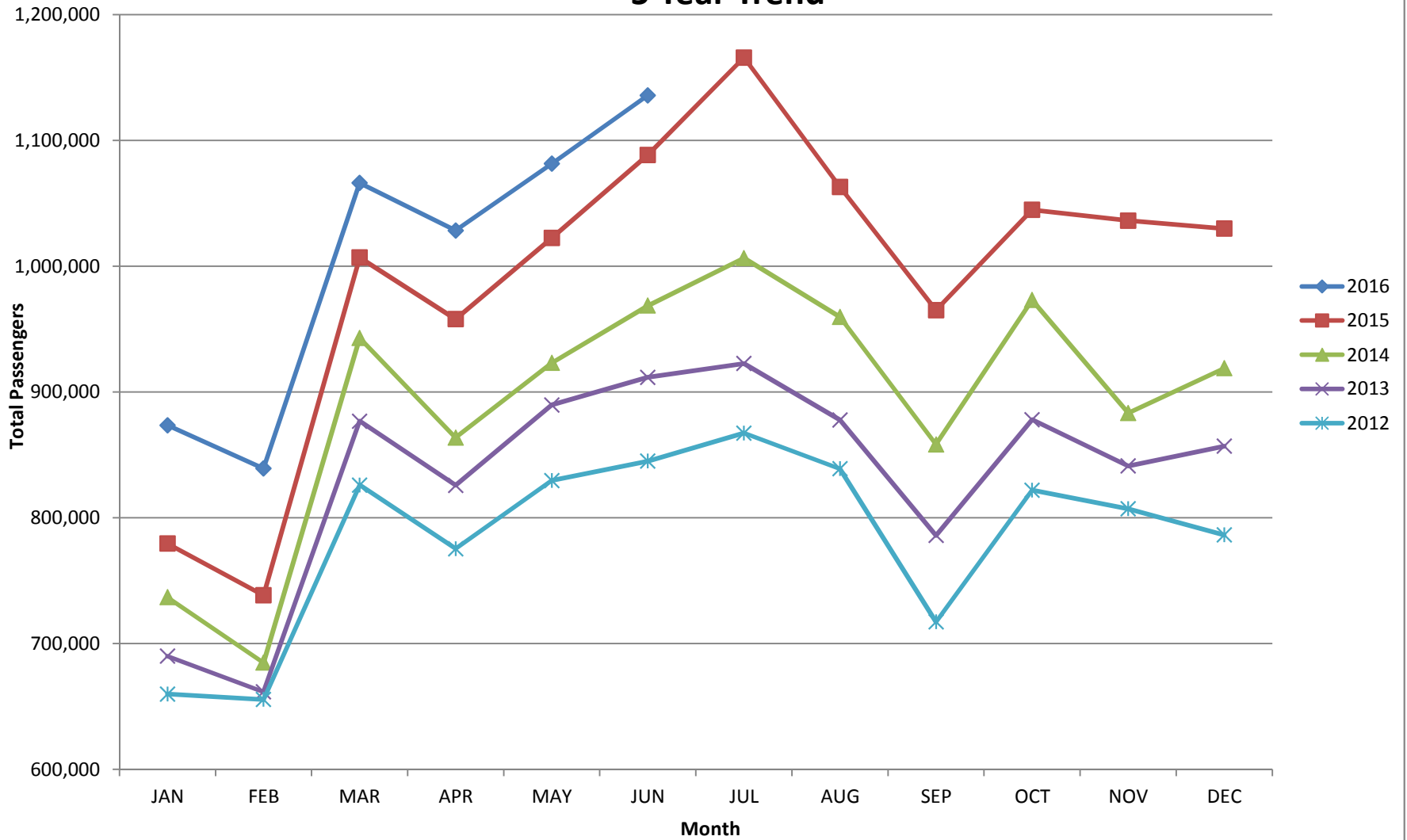
****Note: One of our Cargo companies is currently experiencing an issue with their system and they are unable to provide us with their cargo data. Once the cargo company sends AUS their cargo statistics, we will make the changes in our system and distribute the cargo statistics.**

AUS – Airline Codes
June 2016

<u>Code</u>	<u>Carrier</u>
AC	Air Canada
AS	Alaska Airlines, Inc.
G4	Allegiant Air, LLC
AA	American Airlines, Inc.
BA	British Airways Plc
DE	Condor Airlines (Flugdienst) GmbH
DL	Delta Airlines
F9	Frontier Airlines
B6	JetBlue Airways Corp.
P1	Public Charters, Inc. dba Texas Sky
WN	Southwest Airlines
SY	Sun Country Airlines/ MN Airlines, LLC
UA	United Airlines, Inc.
VX	Virgin America Inc.
XP	Xtra Airways/Casino Express

AUSTIN PASSENGER TRAFFIC

5 Year Trend

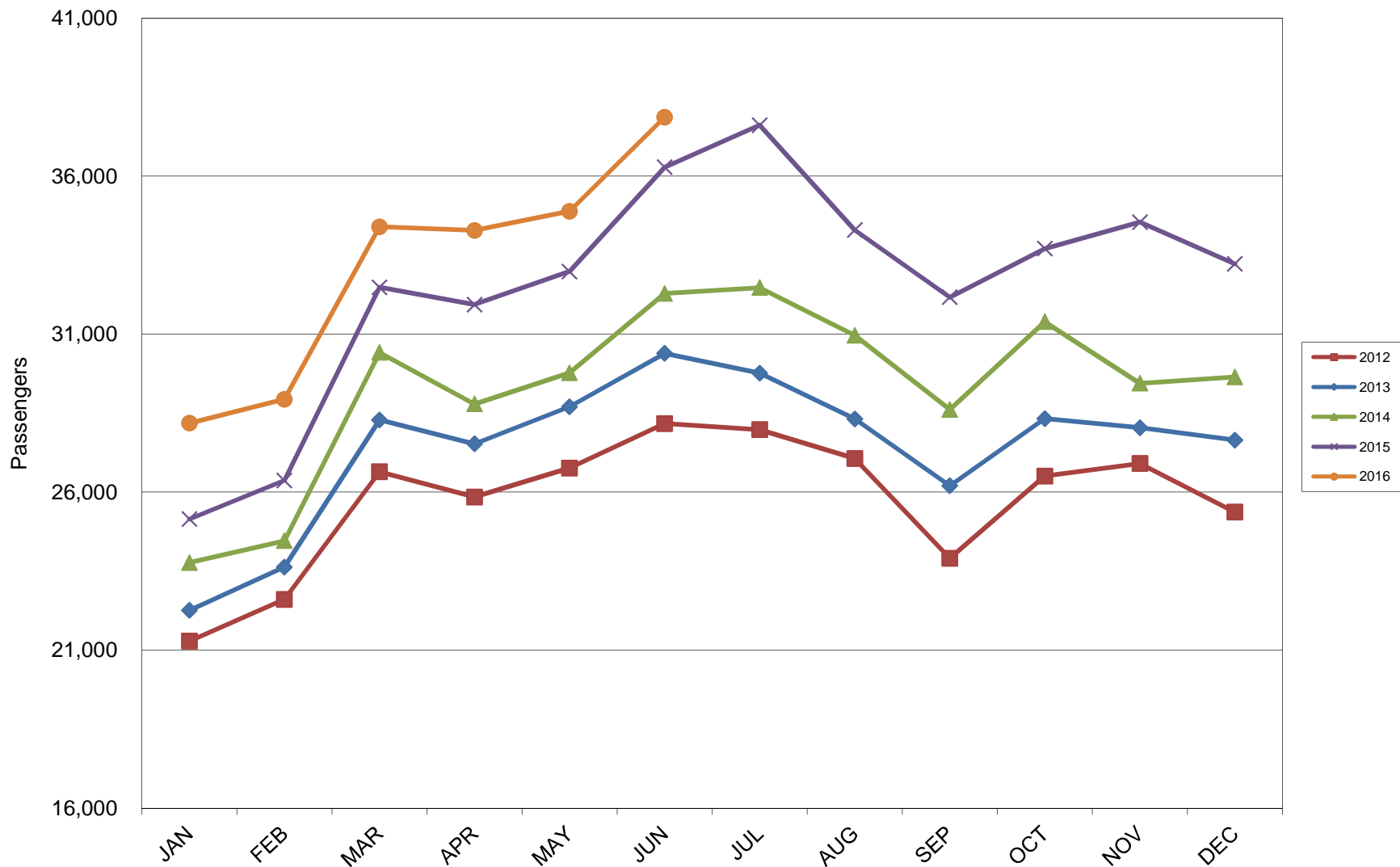


TOTAL CARGO POUNDAGE - AUSTIN, TEXAS

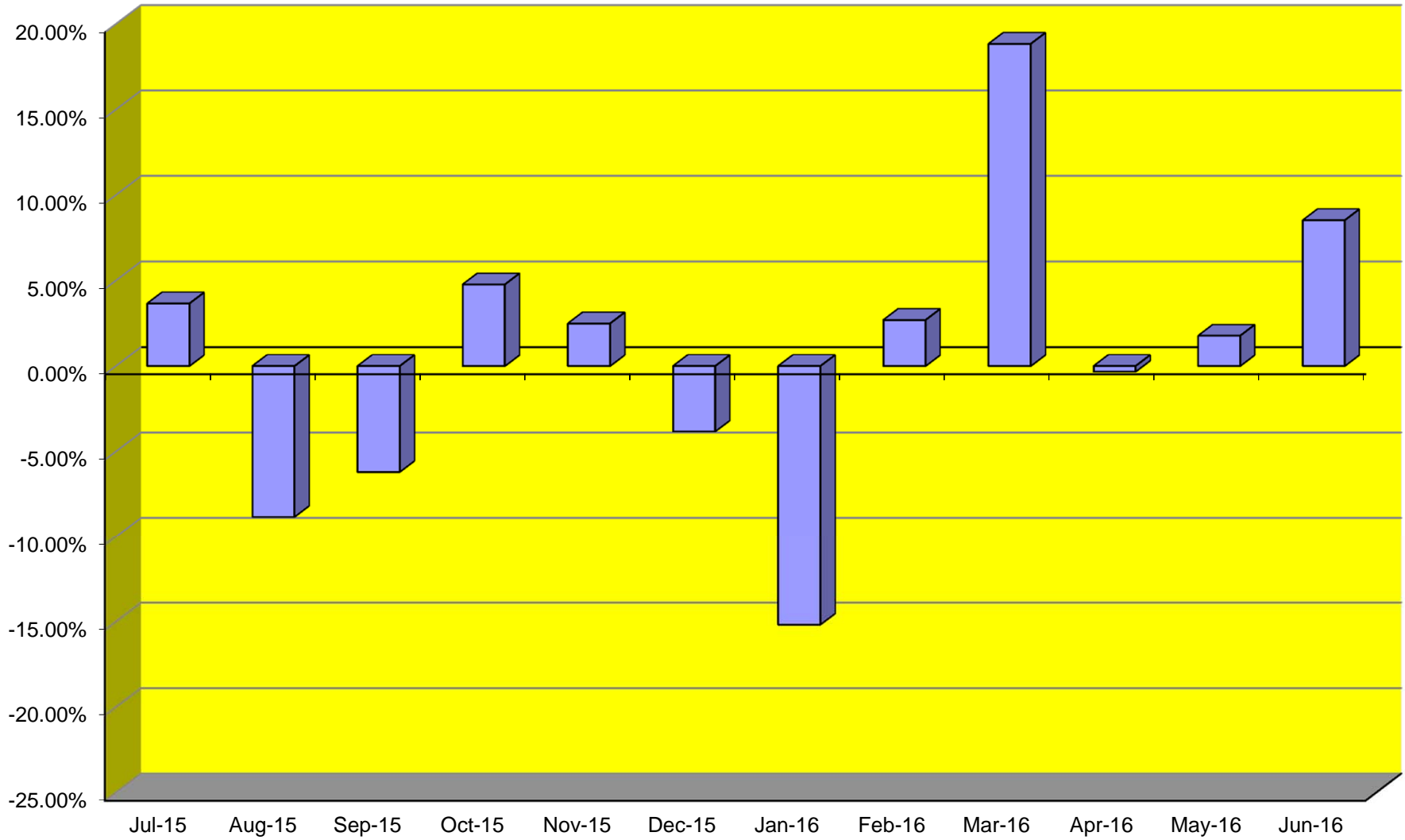
June, 2016

**This page intentionally left blank due to incomplete Cargo Statistics.
Will be updated and distributed once Stats are received.**

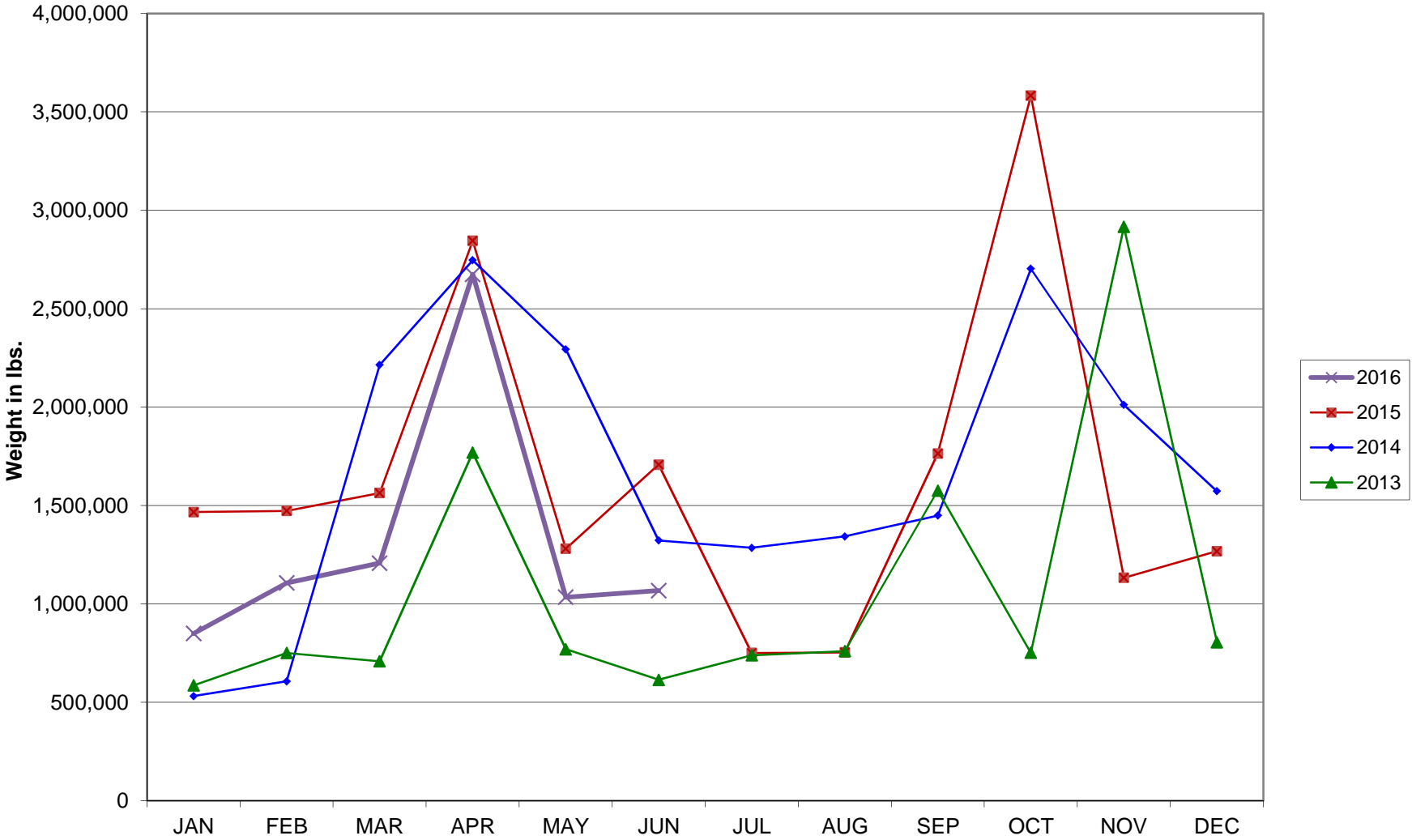
Average Daily Passengers



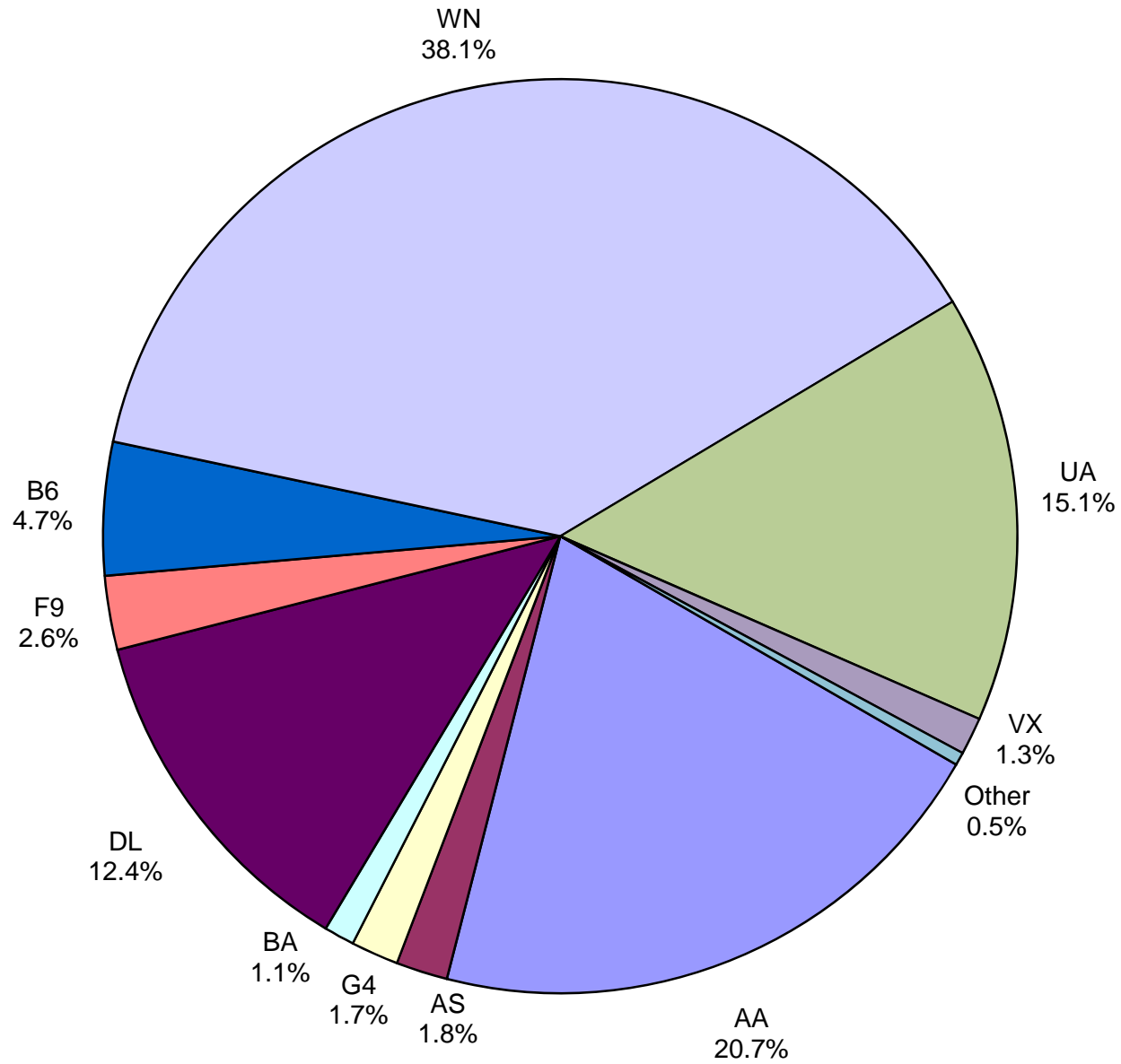
Monthly % Change in Average Daily Passengers



HISTORY OF INTERNATIONAL AIR CARGO



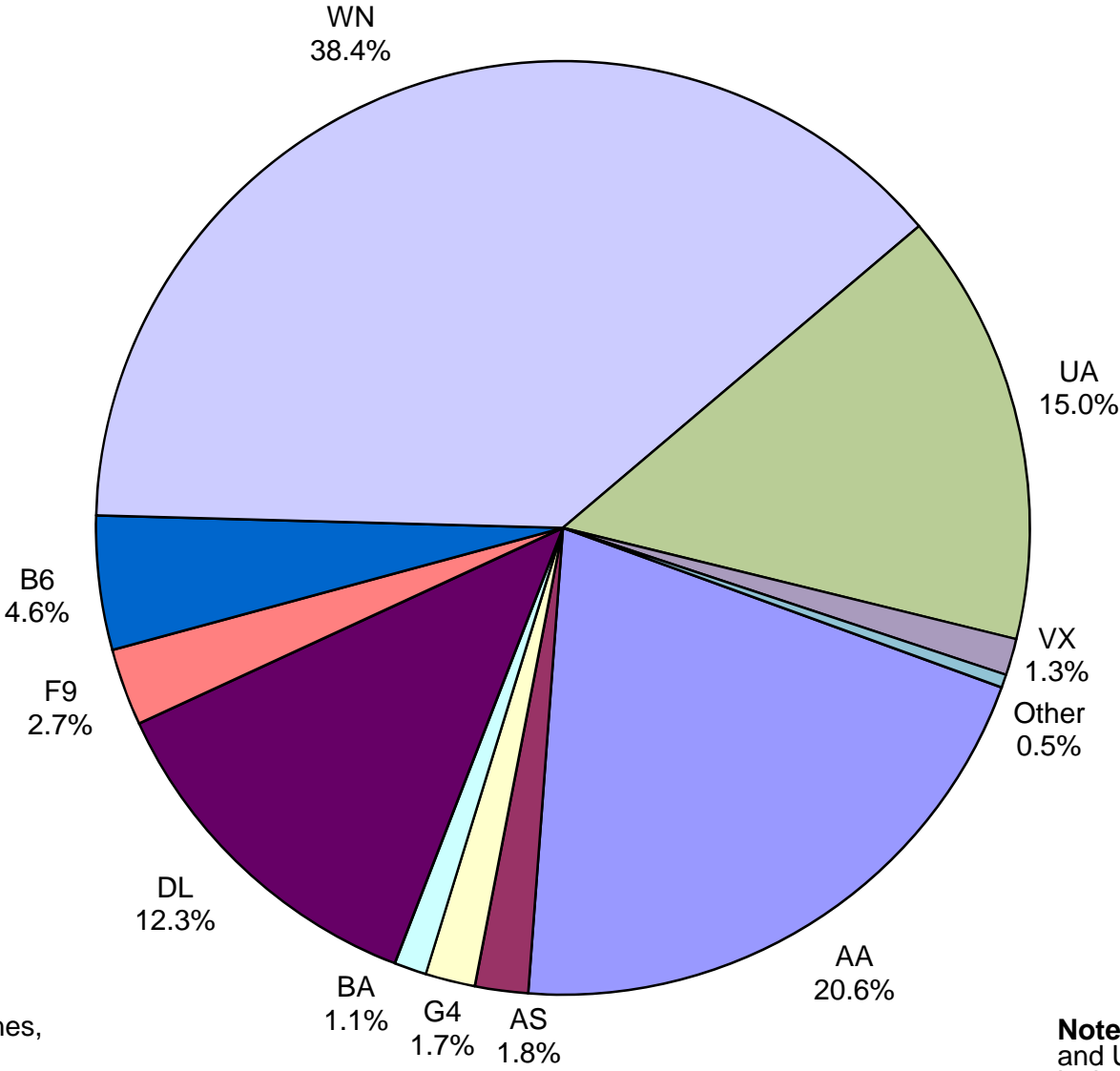
**Total Passengers
June 2016**



Other: Air Canada, Condor Airlines, Sun Country, Texas Sky and Xtra Airways

Note: American, Delta and United Airlines percentages include Affiliates.

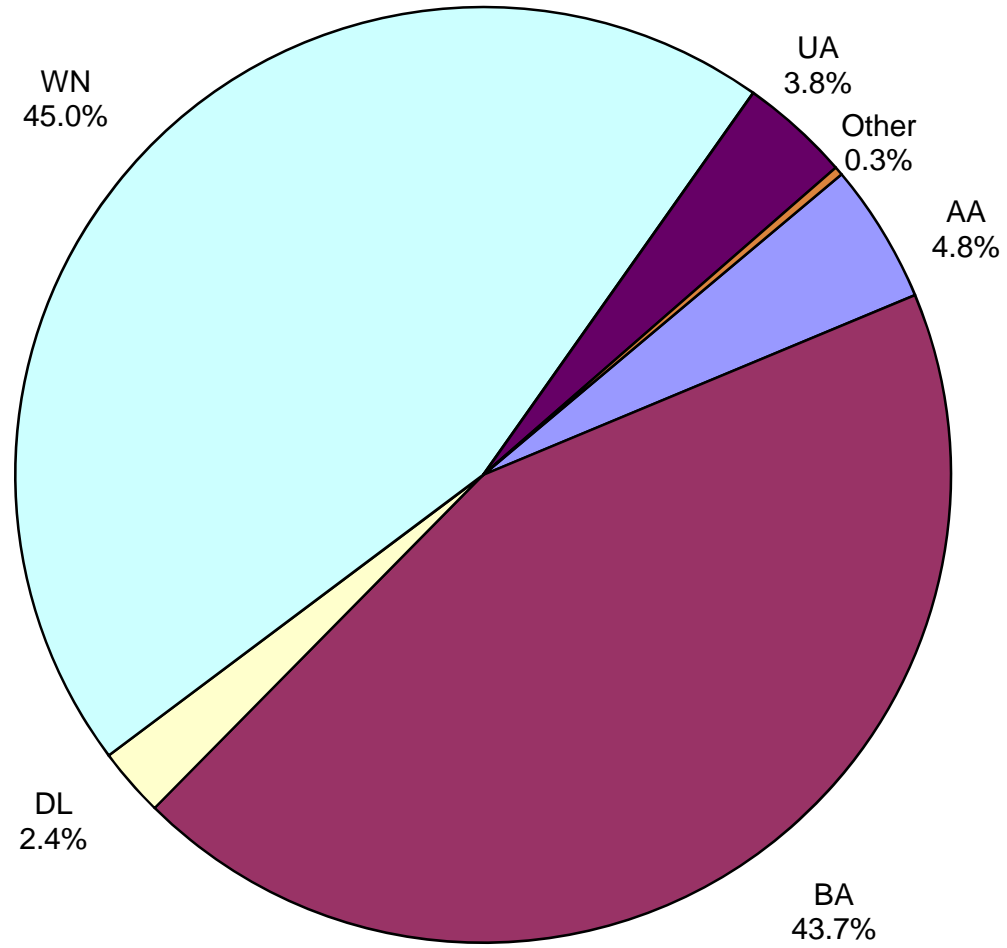
**All Passenger Carriers
Enplaned Revenue Passengers
June 2016**



Other: Air Canada, Condor Airlines, Sun Country and Texas Sky

Note: American/US Airways, Delta and United Airlines percentages include Affiliates.

**AUS Belly Freight Market Shares
June 2016**



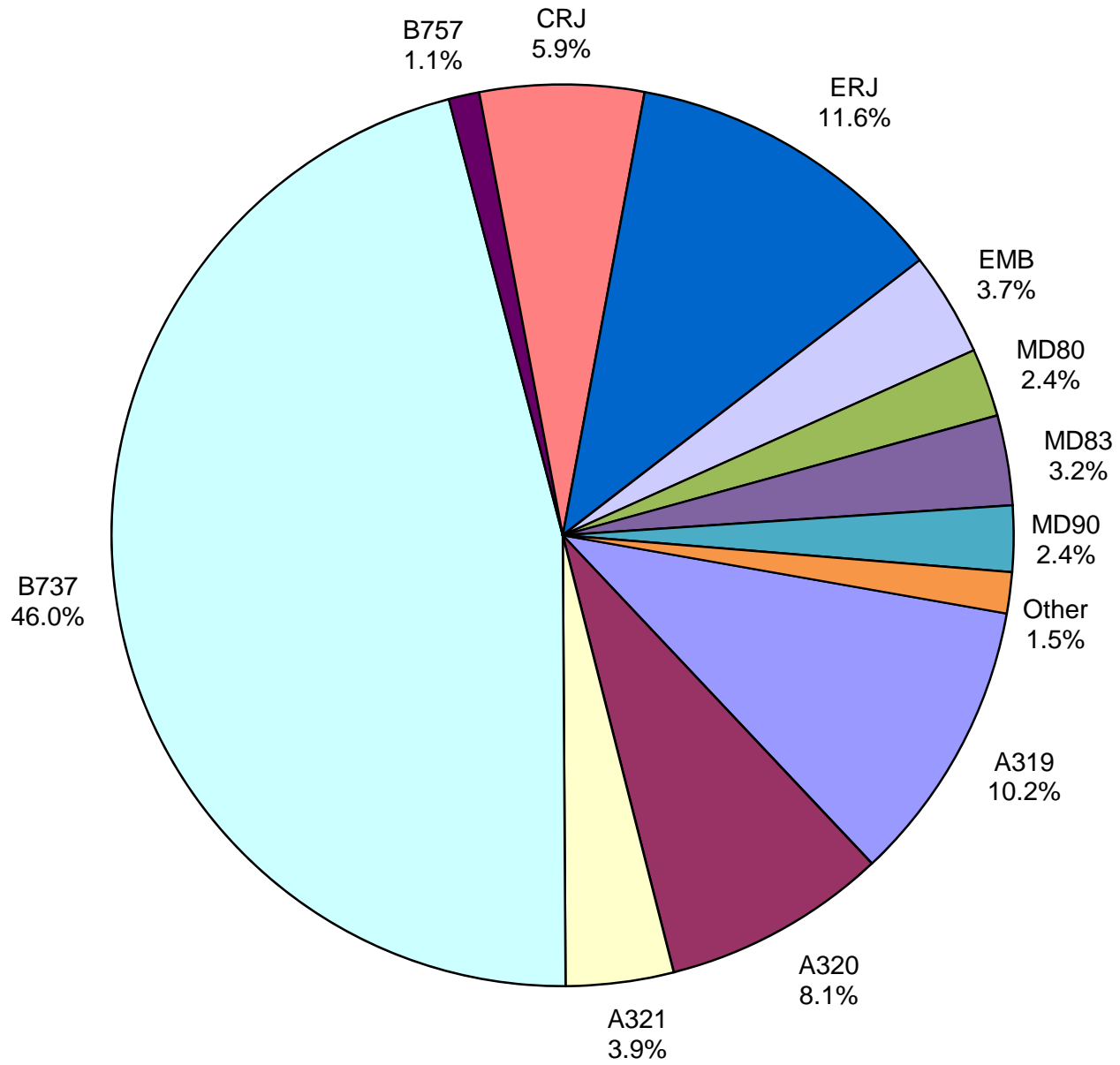
Other = Alaska Airlines

AIR CARGO MARKET SHARE

June, 2016

**This page intentionally left blank due to incomplete Cargo Statistics.
Will be updated and distributed once Stats are received.**

**AUS Scheduled Passenger Aircraft Fleet Mix
June 2016**



Other: B-717, B-767,
B-777, BAE-3200,
BAE-4100 and MD-88

SCHEDULED CARGO AIRCRAFT FLEET MIX

June, 2016

**This page intentionally left blank due to incomplete Cargo Statistics.
Will be updated and distributed once Stats are received.**

Austin-Bergstrom International Airport

PAX Detail Report - June, 2016

Period Company	06/2016	06/2015	Difference	Change	YTD 2016	YTD 2015	YTD Difference	YTD Change	2016 Share	2015 Share	Share Diff
Air Canada	3,769	3,543	226	6.4	20,216	5,191	15,025	289.4	0.3	0.1	0.2
Alaska Airlines, Inc.	20,679	15,525	5,154	33.2	107,694	65,328	42,366	64.9	1.8	1.2	0.6
Allegiant Air, LLC	19,145	12,323	6,822	55.4	81,018	54,928	26,090	47.5	1.3	1.0	0.4
American Airlines, Inc.	234,632	187,063	47,569	25.4	1,235,734	975,482	260,252	26.7	20.5	17.4	3.1
Ameristarjet Charter Inc.	0	0	0	0.0	14	2	12	600.0	0.0	0.0	0.0
Atlas Air, Inc	0	0	0	0.0	453	558	-105	-18.8	0.0	0.0	0.0
Branson AirExpress, LLC	0	680	-680	-100.0	0	1,140	-1,140	-100.0	0.0	0.0	0.0
British Airways Plc	12,235	11,664	571	4.9	63,618	59,326	4,292	7.2	1.1	1.1	0.0
Condor Airlines (Flugdienst) GmbH	902	0	902	0.0	902	0	902	0.0	0.0	0.0	0.0
Delta Air Lines	141,143	135,569	5,574	4.1	745,927	694,523	51,404	7.4	12.4	12.4	0.0
Frontier Airlines, Inc.	29,749	40,882	-11,133	-27.2	129,658	149,589	-19,931	-13.3	2.2	2.7	-0.5
Iberia Airlines	0	0	0	0.0	246	0	246	0.0	0.0	0.0	0.0
JetBlue Airways Corporation	53,380	51,148	2,232	4.4	277,556	280,822	-3,266	-1.2	4.6	5.0	-0.4
Miami Air International Inc.	0	0	0	0.0	0	328	-328	-100.0	0.0	0.0	0.0
Omni Air International	0	0	0	0.0	0	238	-238	-100.0	0.0	0.0	0.0
Public Charters, Inc., d/b/a Texas Sky	144	227	-83	-36.6	778	1,497	-719	-48.0	0.0	0.0	0.0
Republic Airlines, Inc.	0	0	0	0.0	0	873	-873	-100.0	0.0	0.0	0.0
Southwest Airlines	432,750	389,126	43,624	11.2	2,332,637	2,016,444	316,193	15.7	38.7	36.1	2.7
Sun Country Airlines/ MN Airlines, LLC	348	0	348	0.0	2,723	1,083	1,640	151.4	0.0	0.0	0.0
Titan Airways Ltd.	0	160	-160	-100.0	0	160	-160	-100.0	0.0	0.0	0.0
Transportes Aeromar S.A. de C.V.	0	0	0	0.0	0	170	-170	-100.0	0.0	0.0	0.0
United Airlines, Inc.	171,764	173,287	-1,523	-0.9	939,853	938,202	1,651	0.2	15.6	16.8	-1.2
US Airways Group, Inc.	0	43,055	-43,055	-100.0	0	245,885	-245,885	-100.0	0.0	4.4	-4.4
Virgin America Inc.	15,009	24,147	-9,138	-37.8	84,604	101,634	-17,030	-16.8	1.4	1.8	-0.4
Xtra Airways/Casino Express	147	0	147	0.0	871	0	871	0.0	0.0	0.0	0.0
Report Totals	1,135,796	1,088,399	47,397	4.4%	6,024,502	5,593,403	431,099	7.7%			

Statistics Included in Report:

Domestic Passengers:	Enplaned Revenue, Deplaned Revenue, Enplaned Non-Revenue, Deplaned Non-Revenue
International Passengers:	Enplaned Revenue, Deplaned Revenue, Enplaned Non-Revenue, Deplaned Non-Revenue
International Pre-Cleared Passengers:	Enplaned Revenue, Deplaned Revenue, Enplaned Non-Revenue, Deplaned Non-Revenue

Austin-Bergstrom International Airport

Summary Landing Report

Landing Type: Total

Month	2015		2014		2013		% Change 2015 - 2014		% Change 2014 - 2013	
	Count	Weight	Count	Weight	Count	Weight	Count	Weight	Count	Weight
January	4,480	530,688,382	4,213	478,945,673	4,176	469,844,487	6.34%	10.80%	0.89%	1.94%
February	3,992	477,489,019	3,839	437,160,505	3,824	428,117,442	3.99%	9.23%	0.39%	2.11%
March	4,872	584,604,521	4,746	552,992,572	4,660	536,989,561	2.65%	5.72%	1.85%	2.98%
April	4,875	593,462,176	4,515	521,133,372	4,425	504,739,959	7.97%	13.88%	2.03%	3.25%
May	5,161	625,876,151	4,749	553,415,664	4,687	545,881,910	8.68%	13.09%	1.32%	1.38%
June	5,239	644,690,908	4,821	569,196,868	4,680	534,286,437	8.67%	13.26%	3.01%	6.53%
July			5,000	590,375,055	4,788	547,957,989			4.43%	7.74%
August			4,752	562,685,827	4,737	541,522,098			0.32%	3.91%
September			4,513	546,749,431	4,320	497,853,836			4.47%	9.82%
October			4,842	589,981,037	4,613	540,694,783			4.96%	9.12%
November			4,532	546,643,220	4,448	517,542,366			1.89%	5.62%
December			4,826	569,752,623	4,534	521,172,463			6.44%	9.32%
Totals for Selected Period	28,619	3,456,811,157	26,883	3,112,844,654	26,452	3,019,859,796	6.46%	11.05%	1.63%	3.08%
Yearly Totals	28,619	3,456,811,157	55,348	6,519,031,847	53,892	6,186,603,331			2.70%	5.37%