

Austin-Bergstrom International Airport

Aviation Activity Report

Calendar Year 2016 vs 2015

	07/2016	07/2015	Percent Change	01/2016 - 07/2016	01/2015 - 07/2015	Percent Change
Passenger Activity						
Domestic Enplaned Revenue	541,111	554,545	-2.42	3,435,303	3,245,678	5.84
Domestic Deplaned Revenue	533,215	549,576	-2.98	3,400,378	3,211,270	5.89
International Enplaned Revenue	13,940	15,161	-8.05	69,747	71,102	-1.91
International Deplaned Revenue	14,792	15,494	-4.53	71,825	70,291	2.18
Domestic Enplaned Non-Revenue	13,634	13,934	-2.15	77,140	76,521	0.81
Domestic Deplaned Non-Revenue	13,033	13,202	-1.28	78,668	74,326	5.84
International Enplaned Non-Revenue	99	68	45.59	578	563	2.66
International Deplaned Non-Revenue	86	62	38.71	557	503	10.74
Intl Enplaned Pre-Cleared Revenue	1,619	1,751	-7.54	11,272	4,257	164.79
Intl Deplaned Pre-Cleared Revenue	2,024	1,981	2.17	12,267	4,600	166.67
Intl Enplaned Pre-Cleared Non-Revenue	41	19	115.79	193	56	244.64
Intl Deplaned Pre-Cleared Non-Revenue	47	18	161.11	215	47	357.45
Passenger Totals	1,133,641	1,165,811	-2.76	7,158,143	6,759,214	5.90
<i>Enplaned Passenger Totals</i>	<i>570,444</i>	<i>585,478</i>	<i>-2.57</i>	<i>3,594,233</i>	<i>3,398,177</i>	<i>5.77</i>
<i>Deplaned Passenger Totals</i>	<i>563,197</i>	<i>580,333</i>	<i>-2.95</i>	<i>3,563,910</i>	<i>3,361,037</i>	<i>6.04</i>
<i>Domestic Passenger Totals</i>	<i>1,100,993</i>	<i>1,131,257</i>	<i>-2.68</i>	<i>6,991,489</i>	<i>6,607,795</i>	<i>5.81</i>
<i>International Passenger Totals</i>	<i>32,648</i>	<i>34,554</i>	<i>-5.52</i>	<i>166,654</i>	<i>151,419</i>	<i>10.06</i>

CURRENT PASSENGER RECORD = 1,165,811 RECORD SET = JULY 2015

Aircraft Operations

Air Carrier	9,935	10,551	-5.84	66,823	65,534	1.97
Commuter & Air Taxi	1,301	1,168	11.39	8,652	8,817	-1.87
Military	990	786	25.95	6,128	4,593	33.42
General Aviation						
Itinerant	3,760	4,201	-10.50	28,199	28,438	-0.84
Local	216	404	-46.53	1,594	2,089	-23.70
Total G.A.	3,976	4,605	-13.66	29,793	30,527	-2.40
Total Operations	16,202	17,110	-5.31	111,396	109,471	1.76

Austin-Bergstrom International Airport

Aviation Activity Report

Calendar Year 2016 vs 2015

	07/2016	07/2015	Percent Change	01/2016 - 07/2016	01/2015 - 07/2015	Percent Change
<u>Cargo Activity</u>						
Mail						
Domestic Enplaned Mail	152,168	258,130	-41.05	876,990	1,421,826	-38.32
Domestic Deplaned Mail	301,525	353,621	-14.73	1,492,008	2,113,828	-29.42
International Enplaned Mail	0	0	0.00	0	0	0.00
International Deplaned Mail	2	0	0.00	2	0	0.00
Mail Totals	453,695	611,751	-25.84	2,369,000	3,535,654	-33.00
Cargo						
Domestic Enplaned Cargo	4,742,471	5,190,201	-8.63	35,138,267	35,516,159	-1.06
Domestic Deplaned Cargo	6,542,258	4,951,010	32.14	44,112,406	34,569,243	27.61
International Enplaned Cargo	273,263	248,786	9.84	2,642,971	3,782,272	-30.12
International Deplaned Cargo	263,738	131,015	101.30	2,104,165	2,330,223	-9.70
Cargo Totals	11,821,730	10,521,012	12.36	83,997,809	76,197,897	10.24
Belly Freight						
Domestic Enplaned Belly Freight	234,134	263,491	-11.14	1,668,725	1,853,033	-9.95
Domestic Deplaned Belly Freight	421,923	436,445	-3.33	3,288,936	3,414,990	-3.69
International Enplaned Belly Freight	102,865	184,633	-44.29	1,138,015	2,211,251	-48.54
International Deplaned Belly Freight	422,222	186,745	126.10	3,403,373	2,762,840	23.18
Belly Freight Totals	1,181,144	1,071,314	10.25	9,499,049	10,242,114	-7.25
Cargo Totals (Mail, Cargo, Belly Freight)	13,456,569	12,204,077	10.26	95,865,858	89,975,665	6.55
<i>Enplaned Cargo Totals</i>	<i>5,504,901</i>	<i>6,145,241</i>	<i>-10.42</i>	<i>41,464,968</i>	<i>44,784,541</i>	<i>-7.41</i>
<i>Deplaned Cargo Totals</i>	<i>7,951,668</i>	<i>6,058,836</i>	<i>31.24</i>	<i>54,400,890</i>	<i>45,191,124</i>	<i>20.38</i>
<i>Domestic Cargo Totals</i>	<i>12,394,479</i>	<i>11,452,898</i>	<i>8.22</i>	<i>86,577,332</i>	<i>78,889,079</i>	<i>9.74</i>
<i>International Cargo Totals</i>	<i>1,062,090</i>	<i>751,179</i>	<i>41.38</i>	<i>9,288,526</i>	<i>11,086,586</i>	<i>-16.22</i>

CURRENT CARGO RECORD = 40,215,518

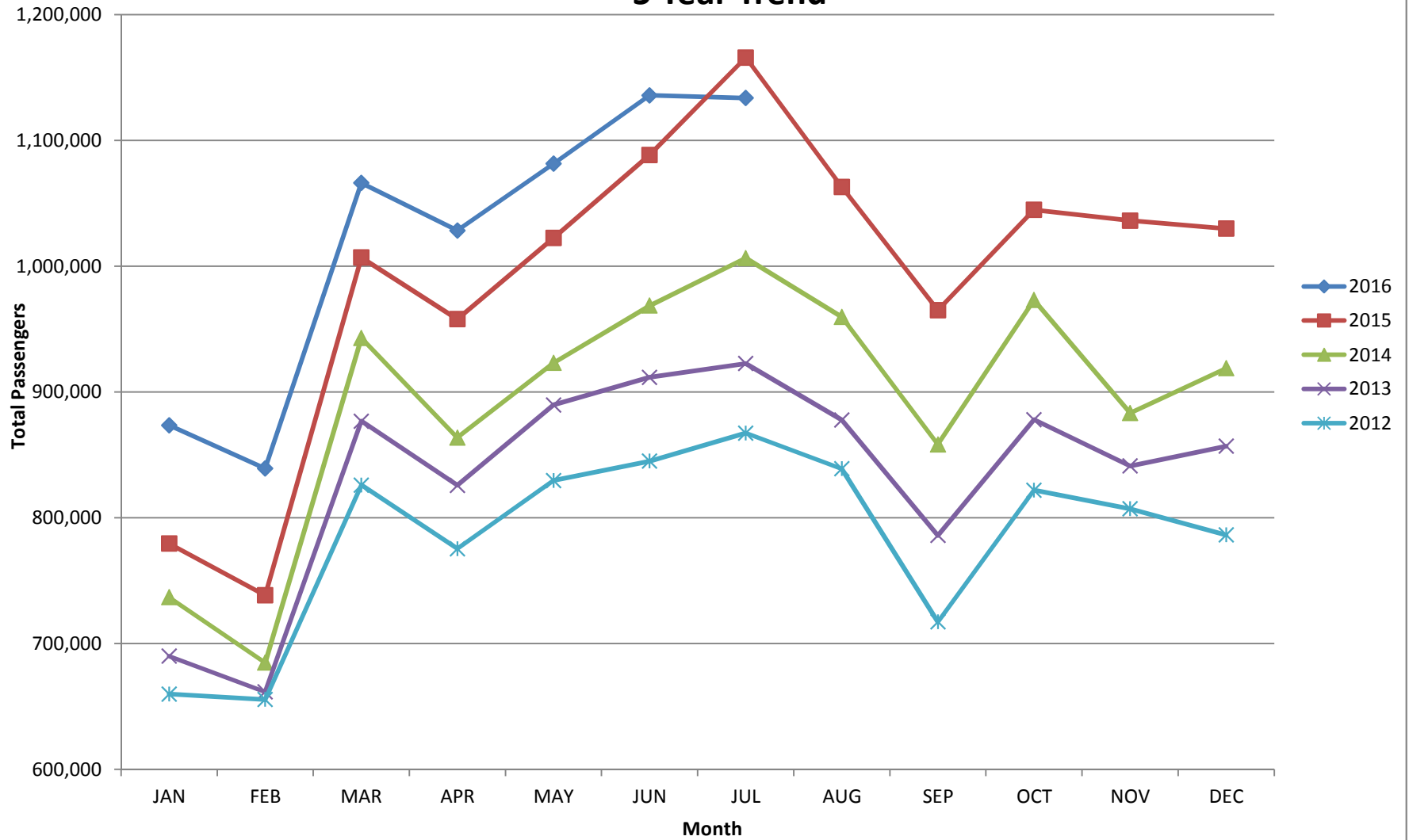
RECORD SET = MARCH 2001

AUS – Airline Codes
July 2016

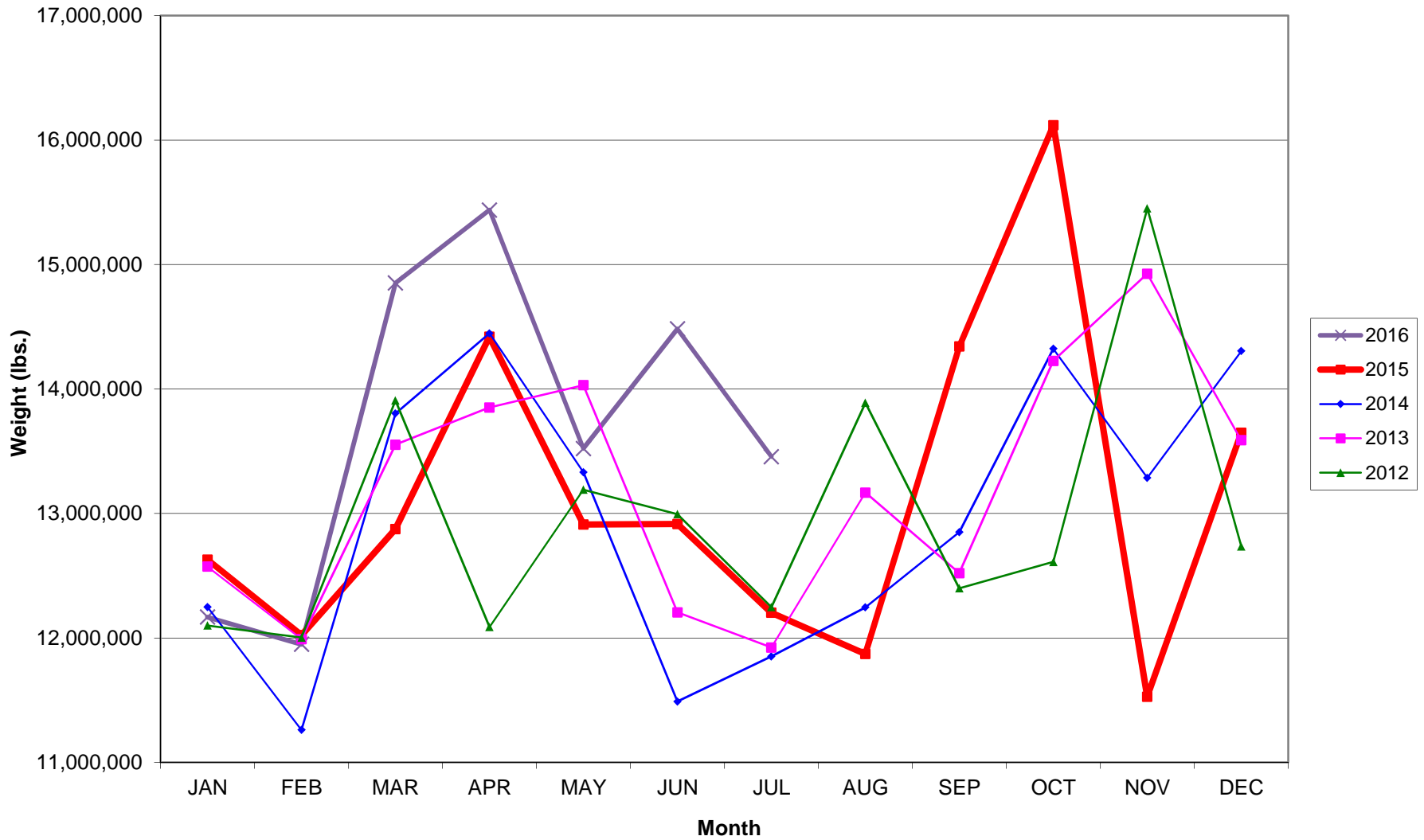
<u>Code</u>	<u>Carrier</u>
AC	Air Canada
AS	Alaska Airlines, Inc.
G4	Allegiant Air, LLC
AA	American Airlines, Inc.
BA	British Airways Plc
DE	Condor Airlines (Flugdienst) GmbH
DL	Delta Airlines
F9	Frontier Airlines
B6	JetBlue Airways Corp.
P1	Public Charters, Inc. dba Texas Sky
WN	Southwest Airlines
SY	Sun Country Airlines/ MN Airlines, LLC
UA	United Airlines, Inc.
VX	Virgin America Inc.

AUSTIN PASSENGER TRAFFIC

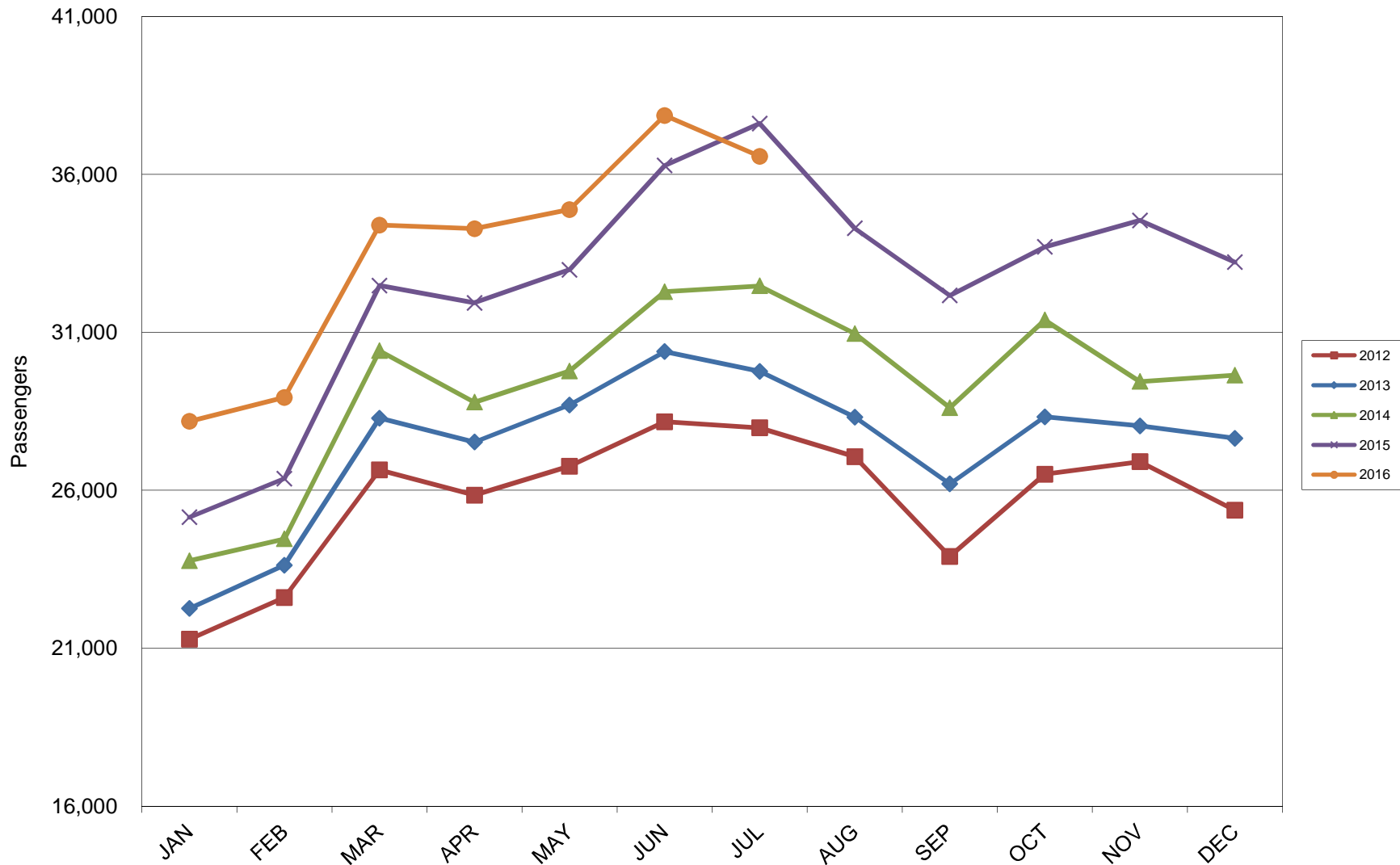
5 Year Trend



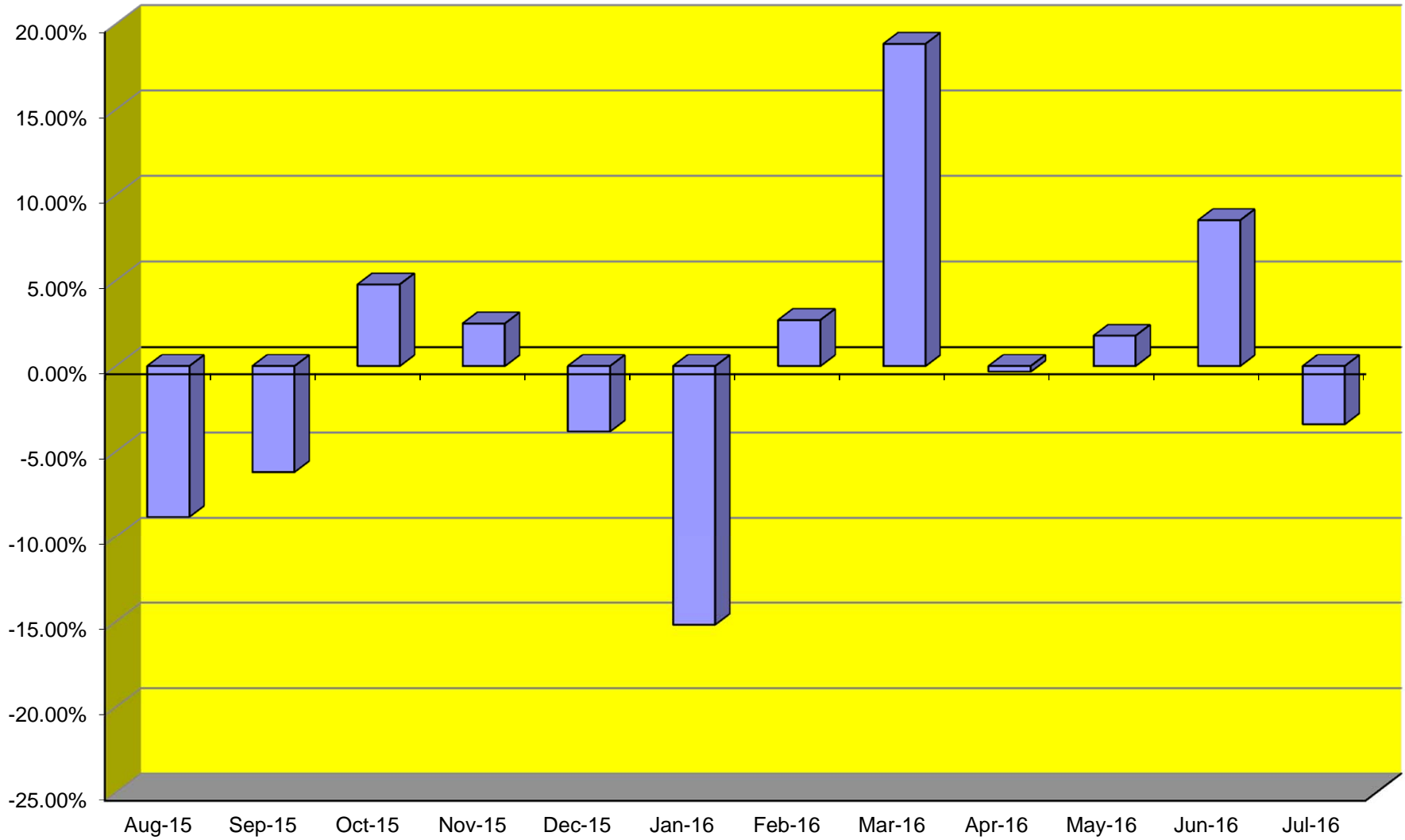
TOTAL CARGO POUNDAGE - AUSTIN, TEXAS



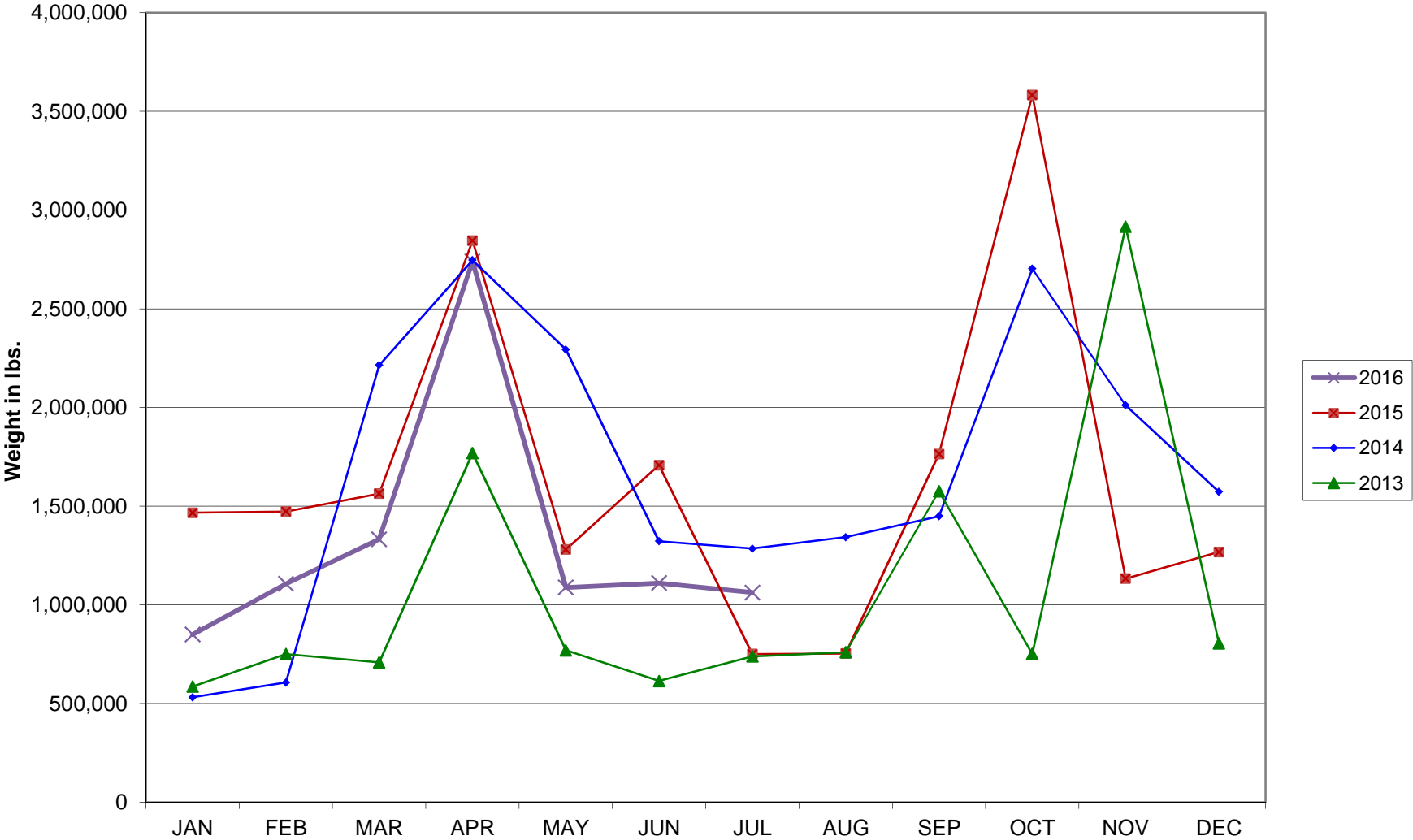
Average Daily Passengers



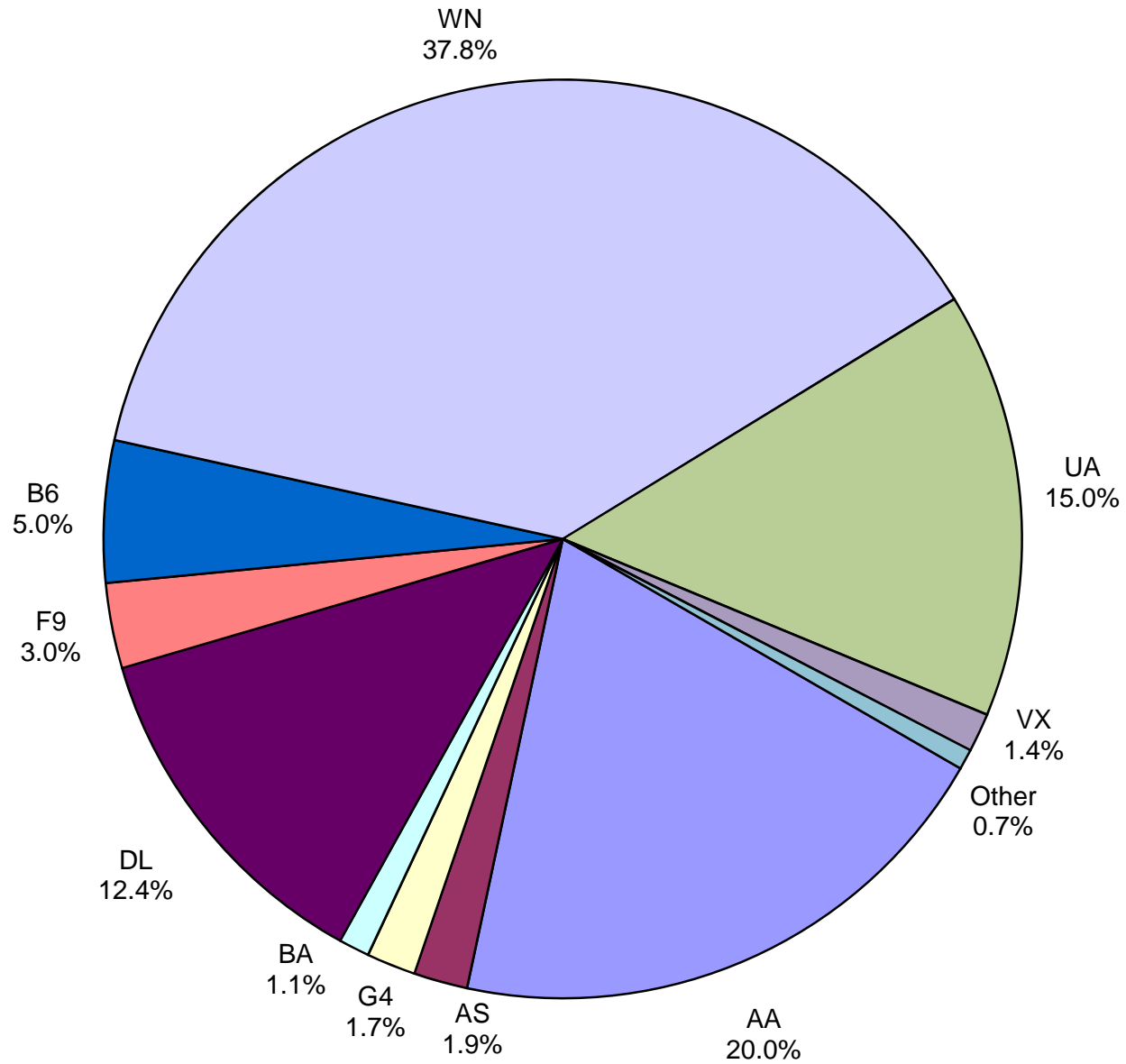
Monthly % Change in Average Daily Passengers



HISTORY OF INTERNATIONAL AIR CARGO



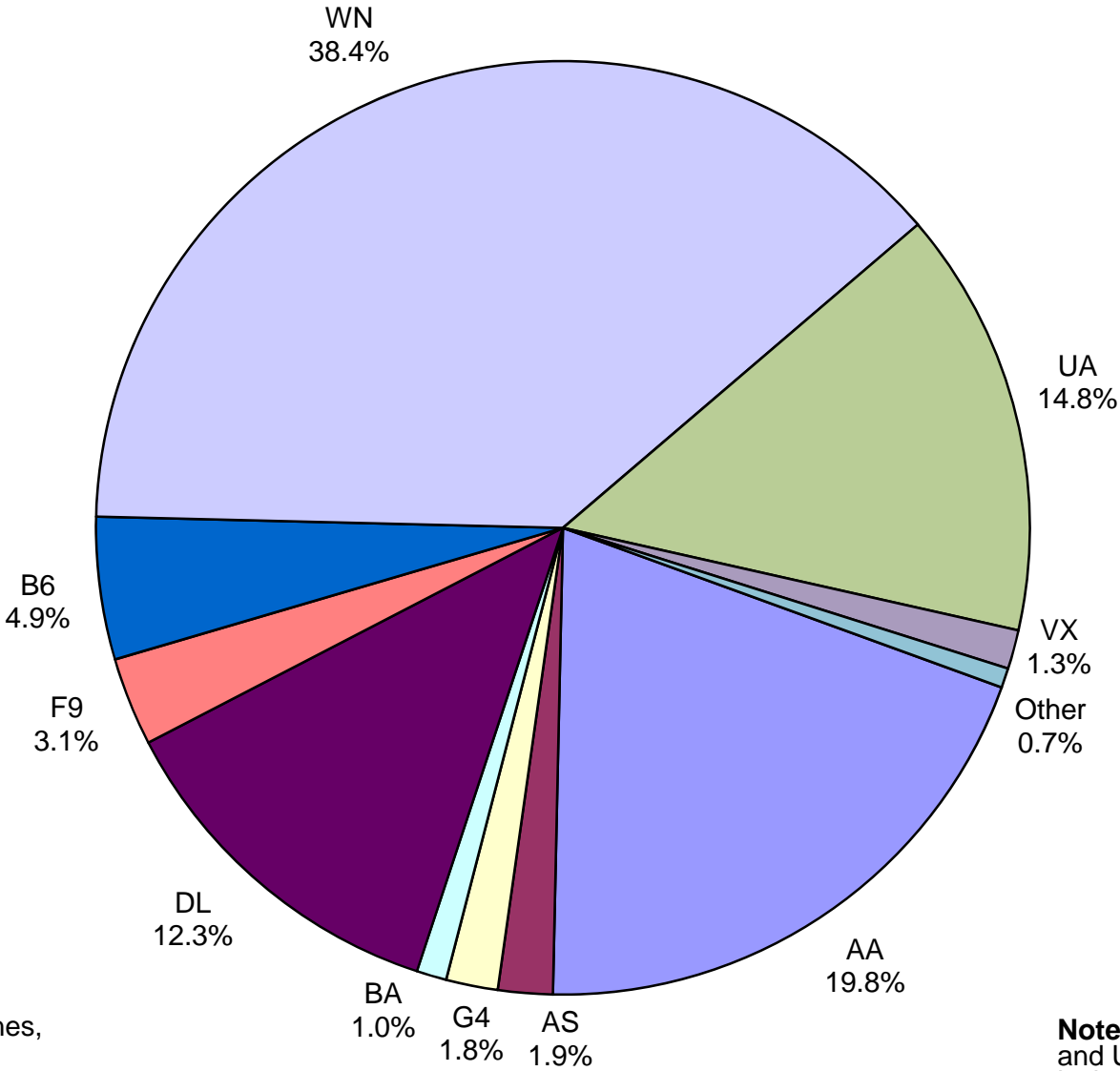
**Total Passengers
July 2016**



Other: Air Canada, Condor Airlines, Sun Country, and Texas Sky

Note: American, Delta and United Airlines percentages include Affiliates.

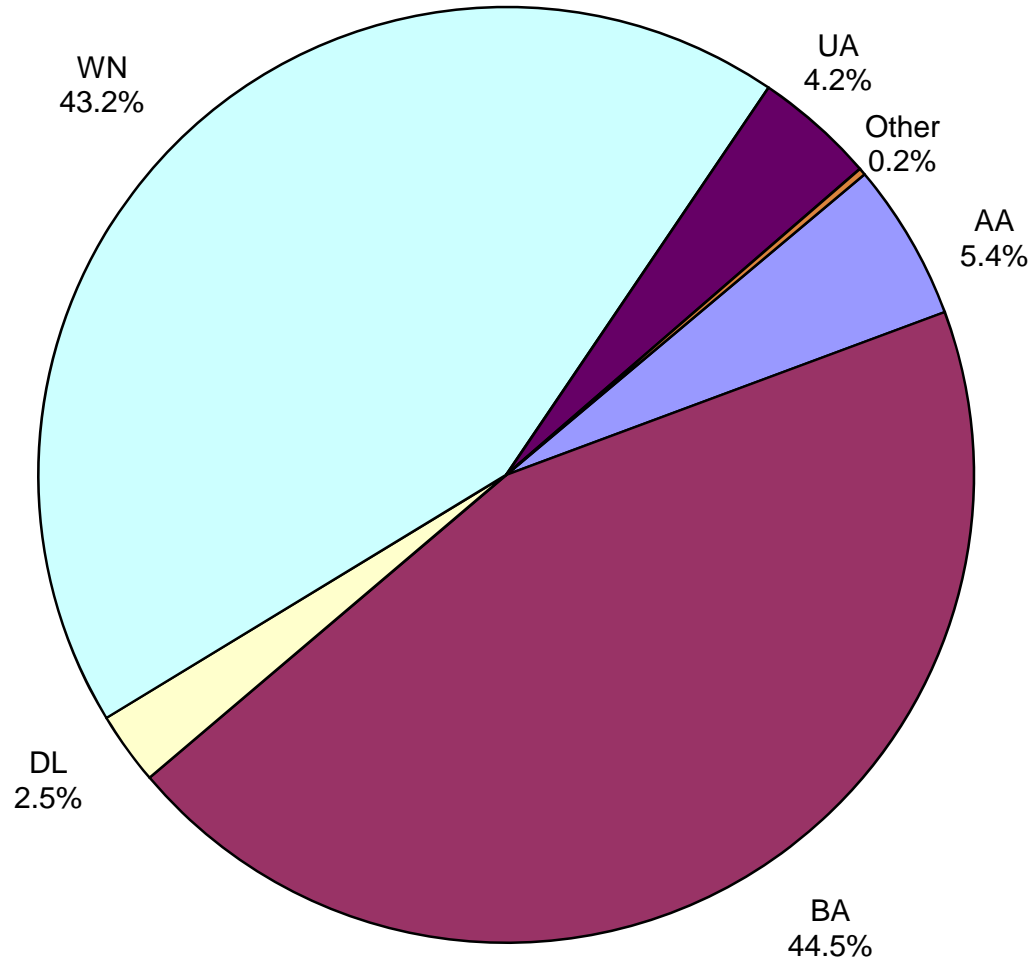
**All Passenger Carriers
Enplaned Revenue Passengers
July 2016**



Other: Air Canada, Condor Airlines, Sun Country and Texas Sky

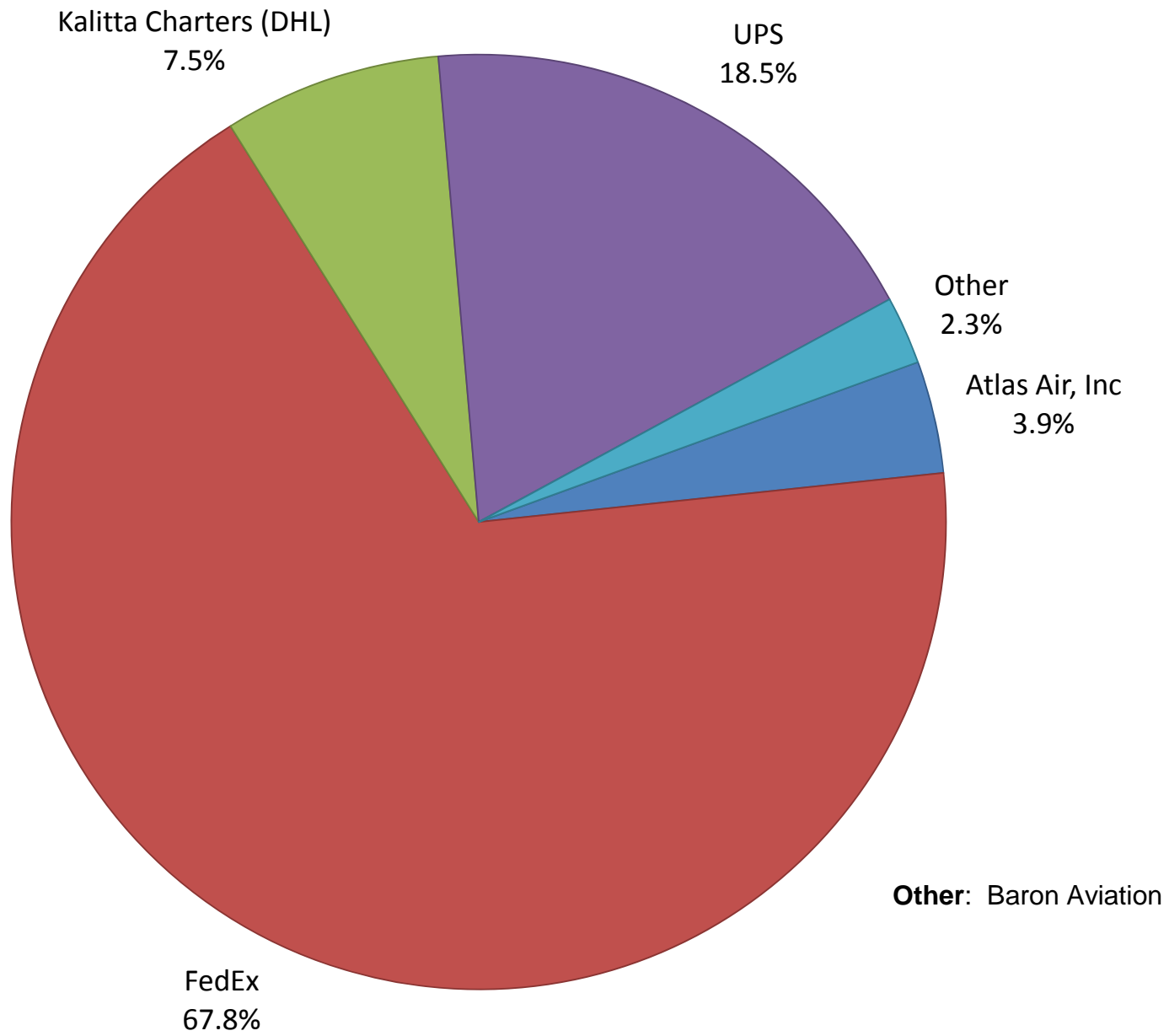
Note: American/US Airways, Delta and United Airlines percentages include Affiliates.

**AUS Belly Freight Market Shares
July 2016**

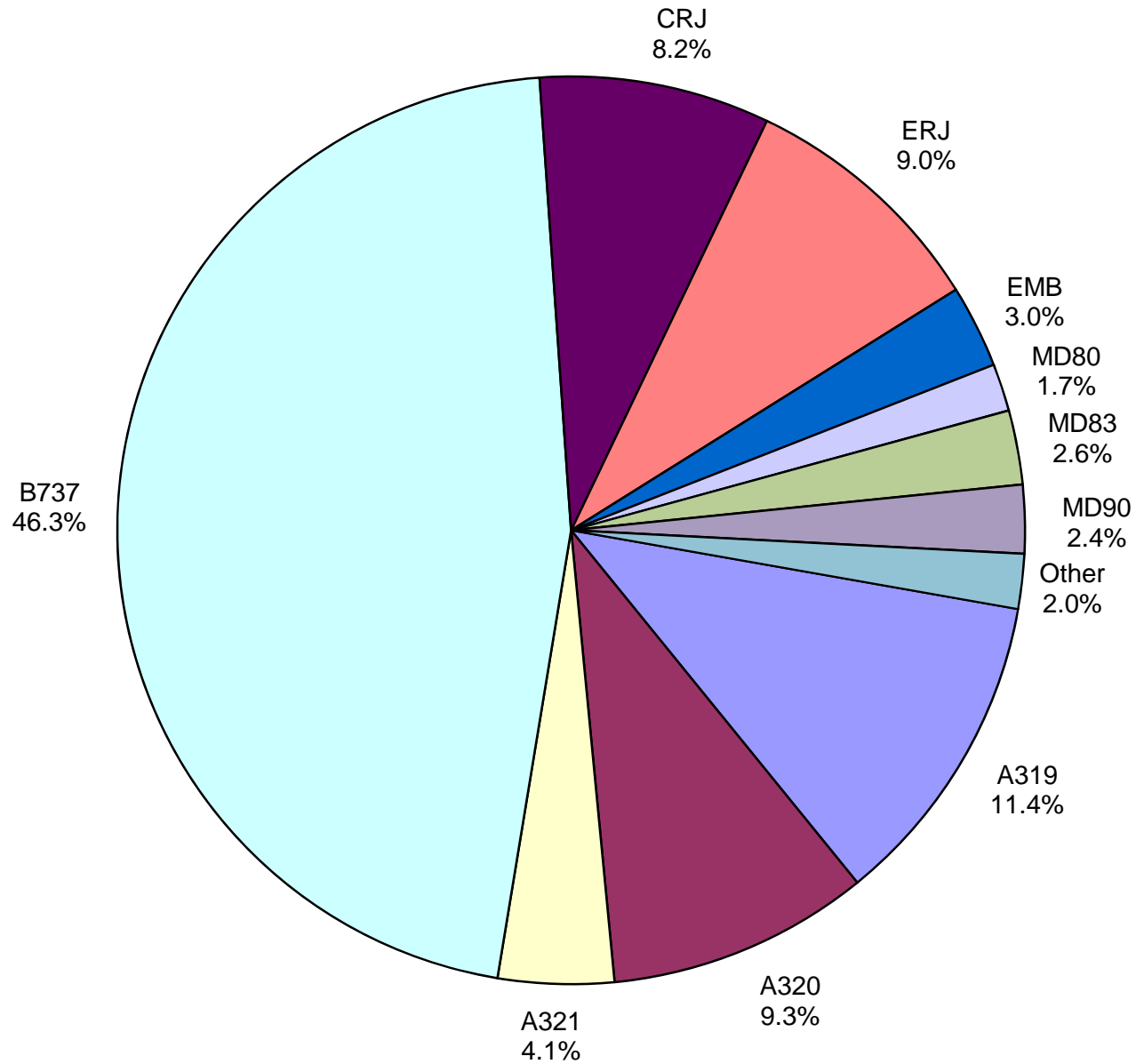


Other = Alaska Airlines

Air Cargo Market Share July 2016

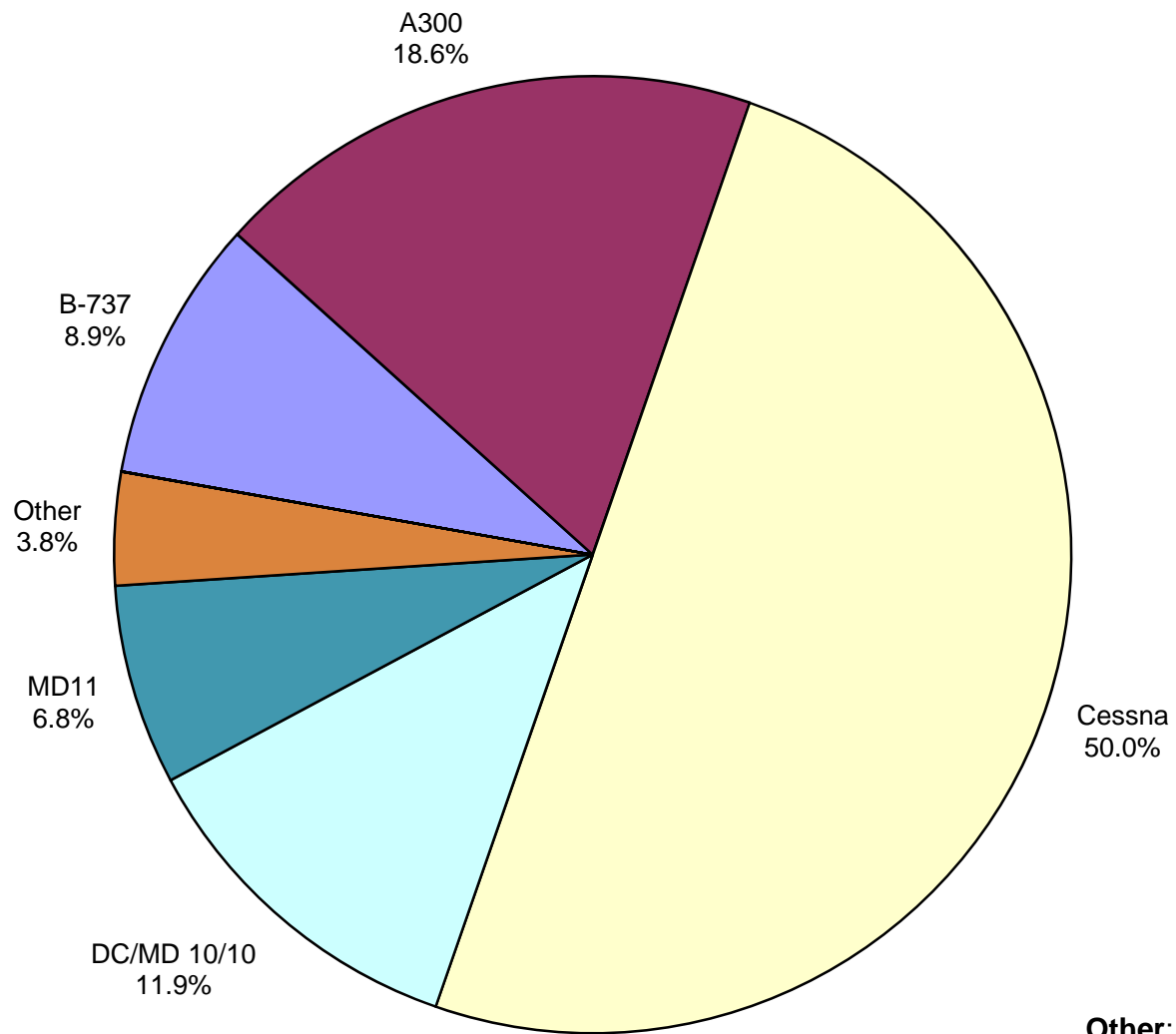


**AUS Scheduled Passenger Aircraft Fleet Mix
July 2016**



Other: B-717, B-757, B-767, B-777, B-787, BAE-3200 and MD-88

**AUS Scheduled Cargo Aircraft Fleet Mix
July 2016**



Other: A-310, B-727, B-757,
B-767, MD/DC-10/30

Austin-Bergstrom International Airport

PAX Detail Report - July, 2016

Period Company	07/2016	07/2015	Difference	Change	YTD 2016	YTD 2015	YTD Difference	YTD Change	2016 Share	2015 Share	Share Diff
Air Canada	3,731	3,769	-38	-1.0	23,947	8,960	14,987	167.3	0.3	0.1	0.2
Alaska Airlines, Inc.	21,454	17,734	3,720	21.0	129,148	83,062	46,086	55.5	1.8	1.2	0.6
Allegiant Air, LLC	19,626	15,283	4,343	28.4	100,644	70,211	30,433	43.3	1.4	1.0	0.4
American Airlines, Inc.	226,893	190,947	35,946	18.8	1,462,627	1,166,429	296,198	25.4	20.4	17.3	3.2
Ameristarjet Charter Inc.	0	0	0	0.0	14	2	12	600.0	0.0	0.0	0.0
Atlas Air, Inc	0	0	0	0.0	453	558	-105	-18.8	0.0	0.0	0.0
Branson AirExpress, LLC	0	628	-628	-100.0	0	1,768	-1,768	-100.0	0.0	0.0	0.0
British Airways Plc	12,214	11,325	889	7.8	75,832	70,651	5,181	7.3	1.1	1.0	0.0
Condor Airlines (Flugdienst) GmbH	3,743	0	3,743	0.0	4,645	0	4,645	0.0	0.1	0.0	0.1
Delta Air Lines	140,744	136,224	4,520	3.3	886,671	830,747	55,924	6.7	12.4	12.3	0.1
Frontier Airlines, Inc.	33,994	43,589	-9,595	-22.0	163,652	193,178	-29,526	-15.3	2.3	2.9	-0.6
Iberia Airlines	0	0	0	0.0	246	0	246	0.0	0.0	0.0	0.0
JetBlue Airways Corporation	56,566	48,307	8,259	17.1	334,122	329,129	4,993	1.5	4.7	4.9	-0.2
Miami Air International Inc.	0	0	0	0.0	0	328	-328	-100.0	0.0	0.0	0.0
Omni Air International	0	0	0	0.0	0	238	-238	-100.0	0.0	0.0	0.0
Public Charters, Inc., d/b/a Texas Sky	165	212	-47	-22.2	943	1,709	-766	-44.8	0.0	0.0	0.0
Republic Airlines, Inc.	0	185	-185	-100.0	0	1,058	-1,058	-100.0	0.0	0.0	0.0
Southwest Airlines	428,520	435,191	-6,671	-1.5	2,761,157	2,451,635	309,522	12.6	38.6	36.3	2.3
Sun Country Airlines/ MN Airlines, LLC	606	234	372	159.0	3,329	1,317	2,012	152.8	0.0	0.0	0.0
Titan Airways Ltd.	0	0	0	0.0	0	160	-160	-100.0	0.0	0.0	0.0
Transportes Aeromar S.A. de C.V.	0	0	0	0.0	0	170	-170	-100.0	0.0	0.0	0.0
United Airlines, Inc.	170,004	185,719	-15,715	-8.5	1,109,857	1,123,921	-14,064	-1.3	15.5	16.6	-1.1
US Airways Group, Inc.	0	50,664	-50,664	-100.0	0	296,549	-296,549	-100.0	0.0	4.4	-4.4
Virgin America Inc.	15,381	25,800	-10,419	-40.4	99,985	127,434	-27,449	-21.5	1.4	1.9	-0.5
Xtra Airways/Casino Express	0	0	0	0.0	871	0	871	0.0	0.0	0.0	0.0
Report Totals	1,133,641	1,165,811	-32,170	-2.8%	7,158,143	6,759,214	398,929	5.9%			

Statistics Included in Report:

Domestic Passengers:	Enplaned Revenue, Deplaned Revenue, Enplaned Non-Revenue, Deplaned Non-Revenue
International Passengers:	Enplaned Revenue, Deplaned Revenue, Enplaned Non-Revenue, Deplaned Non-Revenue
International Pre-Cleared Passengers:	Enplaned Revenue, Deplaned Revenue, Enplaned Non-Revenue, Deplaned Non-Revenue

Austin-Bergstrom International Airport

Summary Landing Report

Landing Type: Total

Month	2016		2015		2014		% Change 2016 - 2015		% Change 2015 - 2014	
	Count	Weight	Count	Weight	Count	Weight	Count	Weight	Count	Weight
January	4,622	560,718,408	4,480	530,688,382	4,213	478,945,673	3.17%	5.66%	6.34%	10.80%
February	4,387	527,452,920	3,992	477,489,019	3,839	437,160,505	9.89%	10.46%	3.99%	9.23%
March	5,151	639,655,137	4,872	584,604,521	4,746	552,992,572	5.73%	9.42%	2.65%	5.72%
April	4,892	614,643,711	4,875	593,462,176	4,515	521,133,372	0.35%	3.57%	7.97%	13.88%
May	5,096	630,853,941	5,161	625,876,151	4,749	553,415,664	-1.26%	0.80%	8.68%	13.09%
June	5,179	651,537,449	5,239	644,690,908	4,821	569,196,868	-1.15%	1.06%	8.67%	13.26%
July	5,233	663,015,597	5,503	676,131,170	5,000	590,375,055	-4.91%	-1.94%	10.06%	14.53%
August			5,277	652,770,571	4,752	562,685,827			11.05%	16.01%
September			4,833	598,547,454	4,513	546,749,431			7.09%	9.47%
October			4,891	611,952,269	4,842	589,981,037			1.01%	3.72%
November			4,815	605,234,834	4,532	546,643,220			6.24%	10.72%
December			5,100	633,215,540	4,826	569,752,623			5.68%	11.14%
Totals for Selected Period	34,560	4,287,877,163	34,122	4,132,942,327	31,883	3,703,219,709	1.28%	3.75%	7.02%	11.60%
Yearly Totals	34,560	4,287,877,163	59,038	7,234,662,995	55,348	6,519,031,847			6.67%	10.98%