

Austin-Bergstrom International Airport

Aviation Activity Report

Calendar Year 2016 vs 2015

	08/2016	08/2015	Percent Change	01/2016 - 08/2016	01/2015 - 08/2015	Percent Change
Passenger Activity						
Domestic Enplaned Revenue	489,422	494,989	-1.12	3,924,725	3,740,667	4.92
Domestic Deplaned Revenue	517,505	522,734	-1.00	3,917,883	3,734,004	4.92
International Enplaned Revenue	8,620	8,288	6.91	78,367	79,390	-0.99
International Deplaned Revenue	10,810	9,667	14.11	82,635	79,958	3.15
Domestic Enplaned Non-Revenue	12,581	12,220	2.95	89,721	88,741	1.10
Domestic Deplaned Non-Revenue	12,074	11,864	1.77	90,742	86,190	5.28
International Enplaned Non-Revenue	92	68	35.29	670	631	6.18
International Deplaned Non-Revenue	123	62	98.39	680	565	20.35
Intl Enplaned Pre-Cleared Revenue	1,395	1,175	18.72	12,667	5,432	133.19
Intl Deplaned Pre-Cleared Revenue	1,811	1,859	-2.58	14,078	6,459	117.96
Intl Enplaned Pre-Cleared Non-Revenue	31	29	6.90	224	85	163.53
Intl Deplaned Pre-Cleared Non-Revenue	32	42	-23.81	247	89	177.53
Passenger Totals	1,054,496	1,062,997	-0.80	8,212,639	7,822,211	4.99
<i>Enplaned Passenger Totals</i>	<i>512,141</i>	<i>516,769</i>	<i>-0.90</i>	<i>4,106,374</i>	<i>3,914,946</i>	<i>4.89</i>
<i>Deplaned Passenger Totals</i>	<i>542,355</i>	<i>546,228</i>	<i>-0.71</i>	<i>4,106,265</i>	<i>3,907,265</i>	<i>5.09</i>
<i>Domestic Passenger Totals</i>	<i>1,031,582</i>	<i>1,041,807</i>	<i>-0.98</i>	<i>8,023,071</i>	<i>7,649,602</i>	<i>4.88</i>
<i>International Passenger Totals</i>	<i>22,914</i>	<i>21,190</i>	<i>8.14</i>	<i>189,568</i>	<i>172,609</i>	<i>9.83</i>

CURRENT PASSENGER RECORD = 1,165,811 RECORD SET = JULY 2015

Aircraft Operations

Air Carrier	9,223	10,138	-9.03	76,046	75,672	0.49
Commuter & Air Taxi	1,953	1,130	72.83	10,605	9,947	6.62
Military	991	954	3.88	7,119	5,547	28.34
General Aviation						
Itinerant	3,484	4,045	-13.87	31,683	32,483	-2.46
Local	168	444	-62.16	1,762	2,533	-30.44
Total G.A.	3,652	4,489	-18.65	33,445	35,016	-4.49
Total Operations	15,819	16,711	-5.34	127,215	126,182	0.82

Austin-Bergstrom International Airport

Aviation Activity Report

Calendar Year 2016 vs 2015

<u>Cargo Activity</u>	08/2016	08/2015	Percent Change	01/2016 - 08/2016	01/2015 - 08/2015	Percent Change
Mail						
Domestic Enplaned Mail	141,804	232,308	-38.96	1,018,794	1,654,134	-38.41
Domestic Deplaned Mail	286,354	319,569	-10.39	1,778,362	2,433,397	-26.92
International Enplaned Mail	0	0	0.00	0	0	0.00
International Deplaned Mail	0	0	0.00	2	0	0.00
Mail Totals	428,158	551,877	-22.42	2,797,158	4,087,531	-31.57
Cargo						
Domestic Enplaned Cargo	4,962,333	5,058,185	-1.89	40,100,600	40,574,344	-1.17
Domestic Deplaned Cargo	6,965,728	4,901,938	42.10	51,078,134	39,471,181	29.41
International Enplaned Cargo	417,013	225,423	84.99	3,059,984	4,007,695	-23.65
International Deplaned Cargo	179,091	138,730	29.09	2,283,256	2,468,953	-7.52
Cargo Totals	12,524,165	10,324,276	21.31	96,521,974	86,522,173	11.56
Belly Freight						
Domestic Enplaned Belly Freight	237,143	189,961	24.84	1,905,868	2,042,994	-6.71
Domestic Deplaned Belly Freight	447,257	416,056	7.50	3,736,193	3,831,046	-2.48
International Enplaned Belly Freight	91,740	178,174	-48.51	1,229,755	2,389,425	-48.53
International Deplaned Belly Freight	472,562	211,528	123.40	3,875,935	2,974,368	30.31
Belly Freight Totals	1,248,702	995,719	25.41	10,747,751	11,237,833	-4.36
Cargo Totals (Mail, Cargo, Belly Freight)	14,201,025	11,871,872	19.62	110,066,883	101,847,537	8.07
<i>Enplaned Cargo Totals</i>	<i>5,850,033</i>	<i>5,884,051</i>	<i>-0.58</i>	<i>47,315,001</i>	<i>50,668,592</i>	<i>-6.62</i>
<i>Deplaned Cargo Totals</i>	<i>8,350,992</i>	<i>5,987,821</i>	<i>39.47</i>	<i>62,751,882</i>	<i>51,178,945</i>	<i>22.61</i>
<i>Domestic Cargo Totals</i>	<i>13,040,619</i>	<i>11,118,017</i>	<i>17.29</i>	<i>99,617,951</i>	<i>90,007,096</i>	<i>10.68</i>
<i>International Cargo Totals</i>	<i>1,160,406</i>	<i>753,855</i>	<i>53.93</i>	<i>10,448,932</i>	<i>11,840,441</i>	<i>-11.75</i>

CURRENT CARGO RECORD = 40,215,518

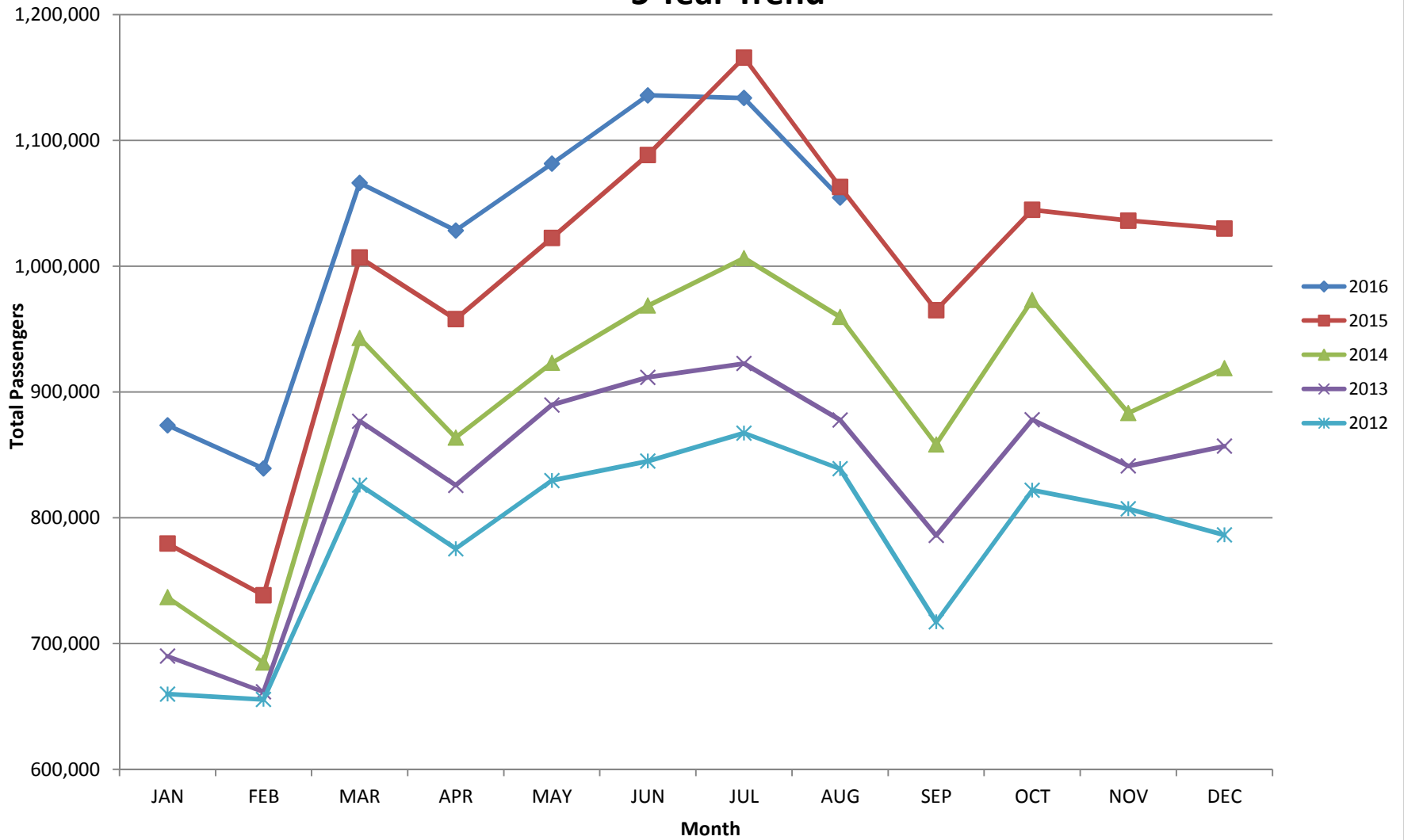
RECORD SET = MARCH 2001

AUS – Airline Codes
August 2016

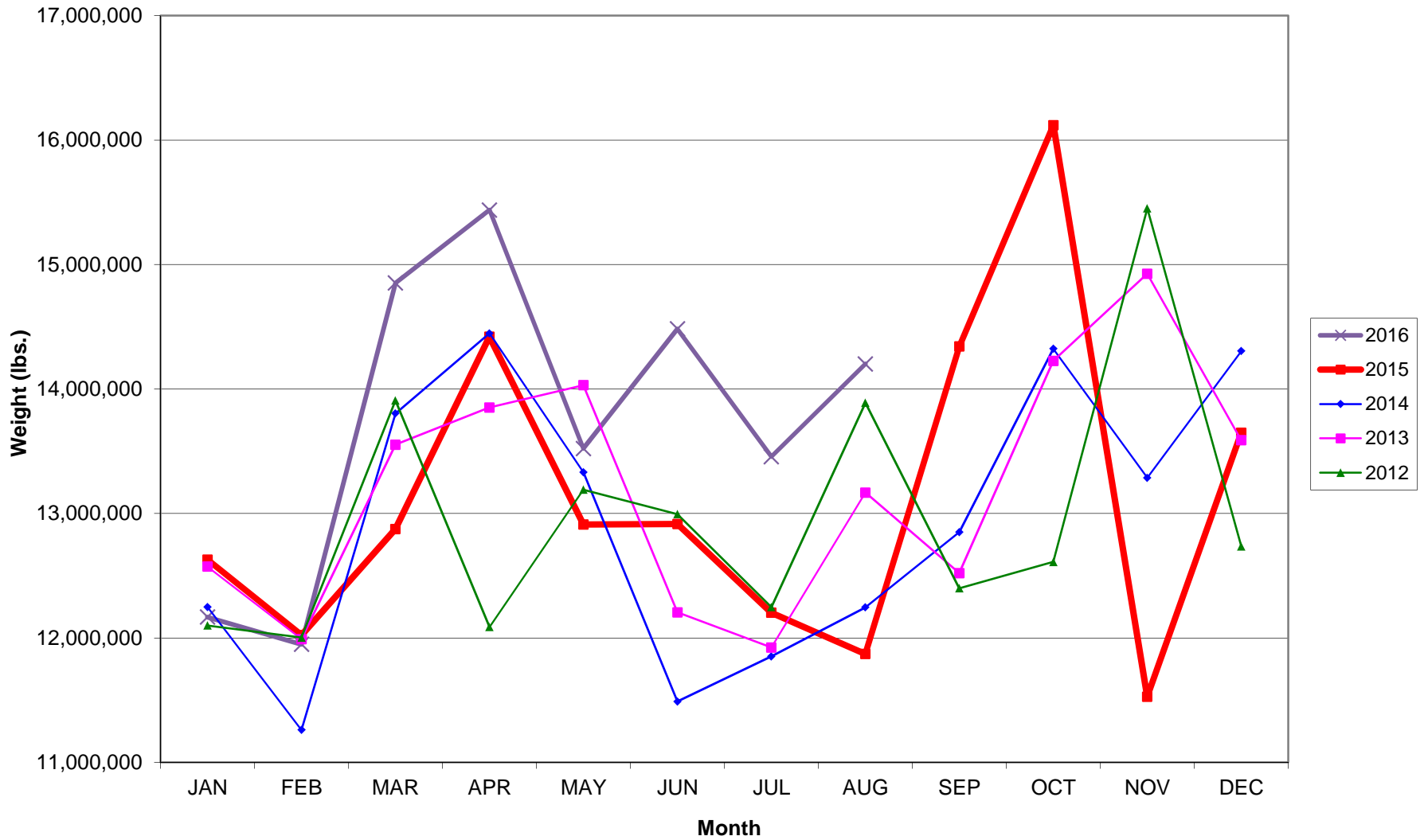
<u>Code</u>	<u>Carrier</u>
AC	Air Canada
AS	Alaska Airlines, Inc.
G4	Allegiant Air, LLC
AA	American Airlines, Inc.
BA	British Airways Plc
DE	Condor Airlines (Flugdienst) GmbH
DL	Delta Airlines
F9	Frontier Airlines
B6	JetBlue Airways Corp.
P1	Public Charters, Inc. dba Texas Sky
WN	Southwest Airlines
SY	Sun Country Airlines/ MN Airlines, LLC
TK	Turkish Airlines
UA	United Airlines, Inc.
VX	Virgin America Inc.
Y4	Volaris/Concesionaria Vuela Compañía de Aviación, S.A.P.I. de C.V.
XP	Xtra Airways

AUSTIN PASSENGER TRAFFIC

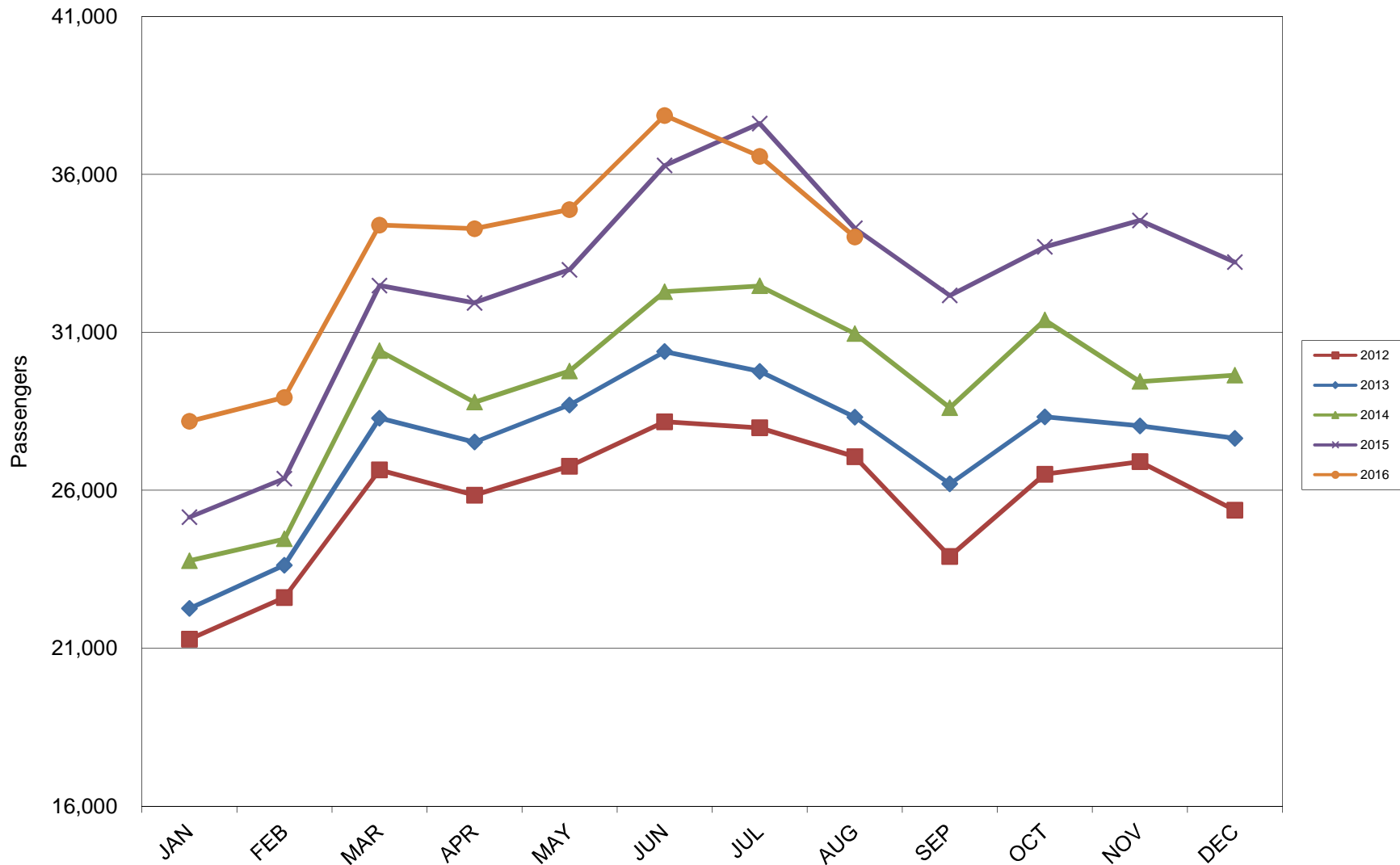
5 Year Trend



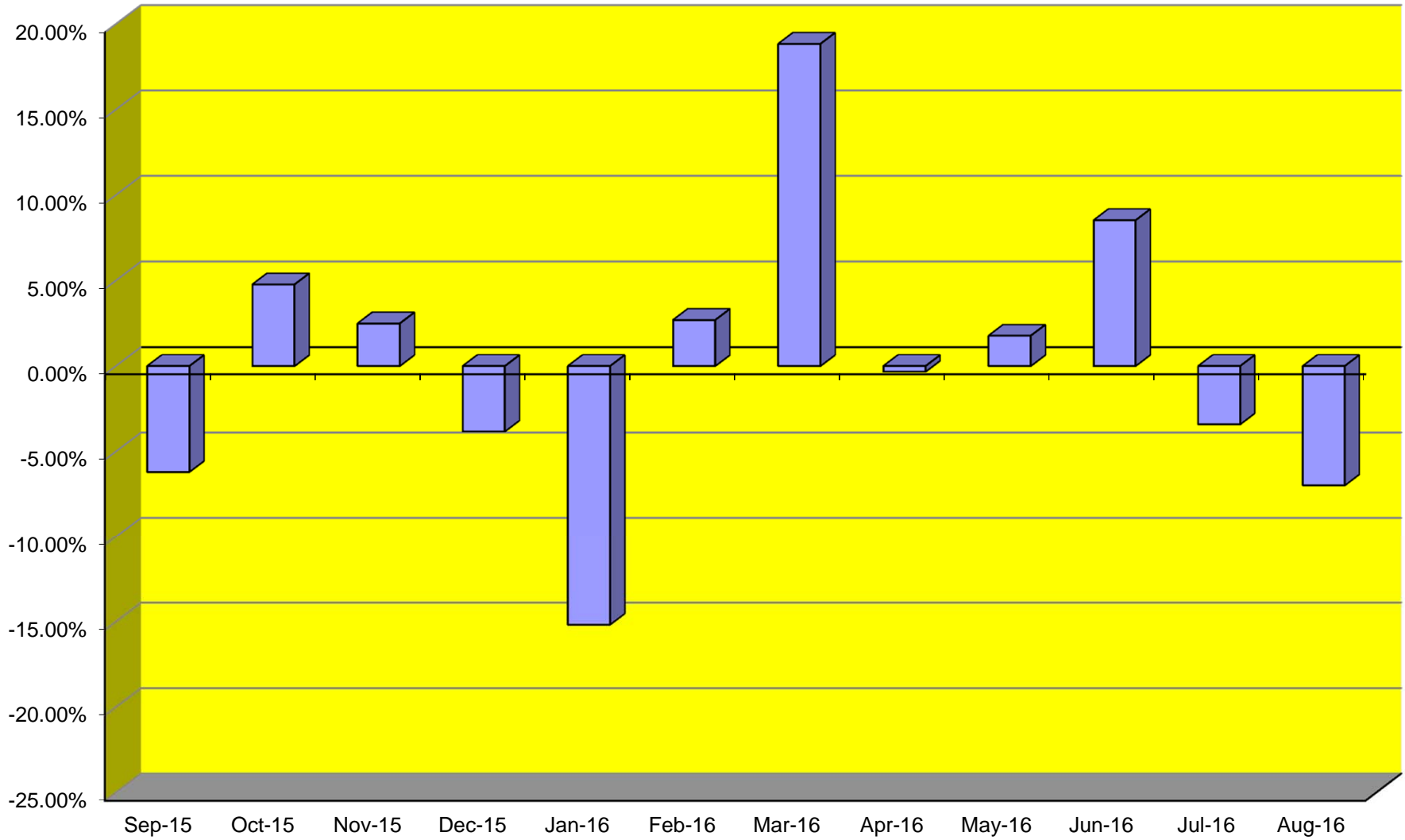
TOTAL CARGO POUNDAGE - AUSTIN, TEXAS



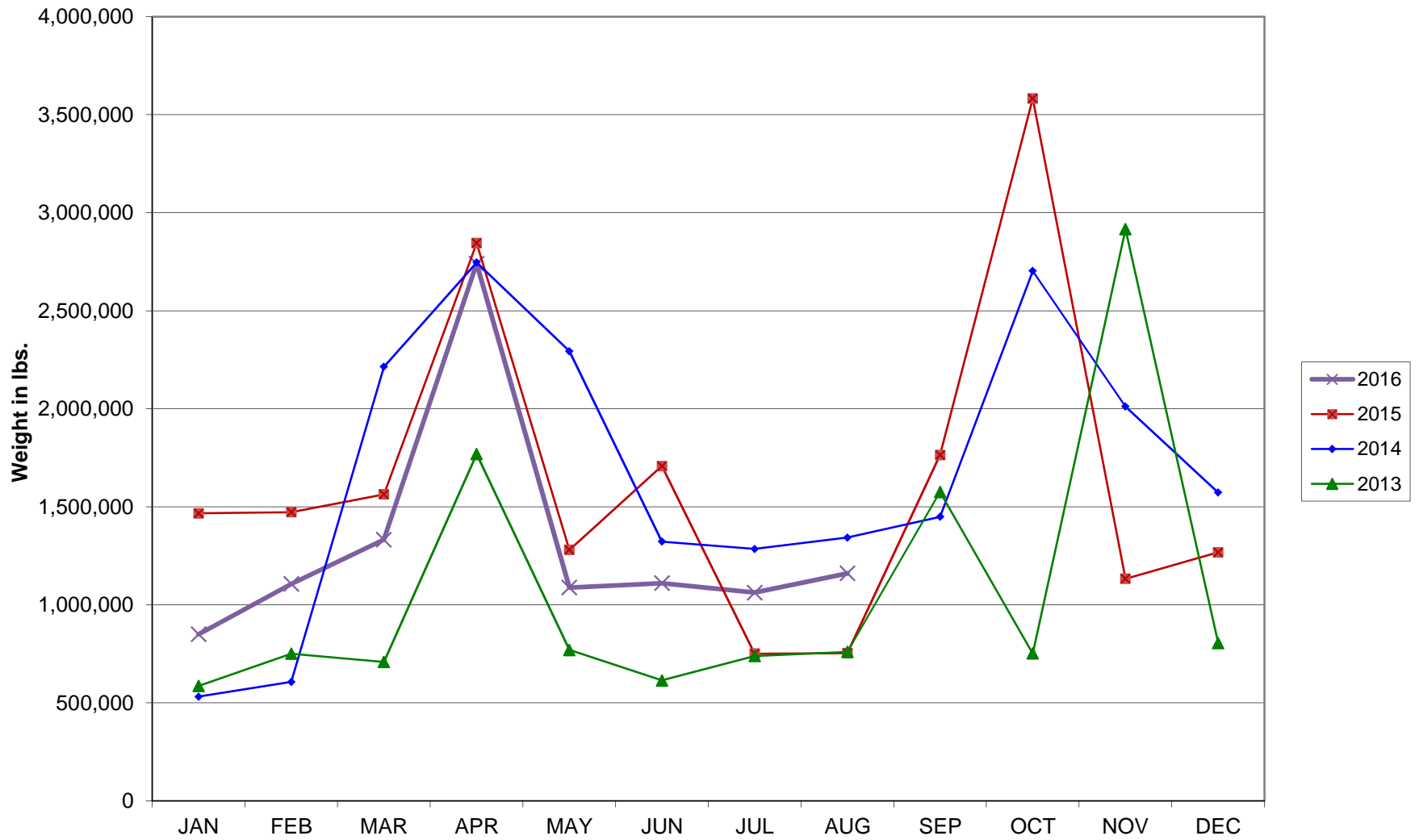
Average Daily Passengers



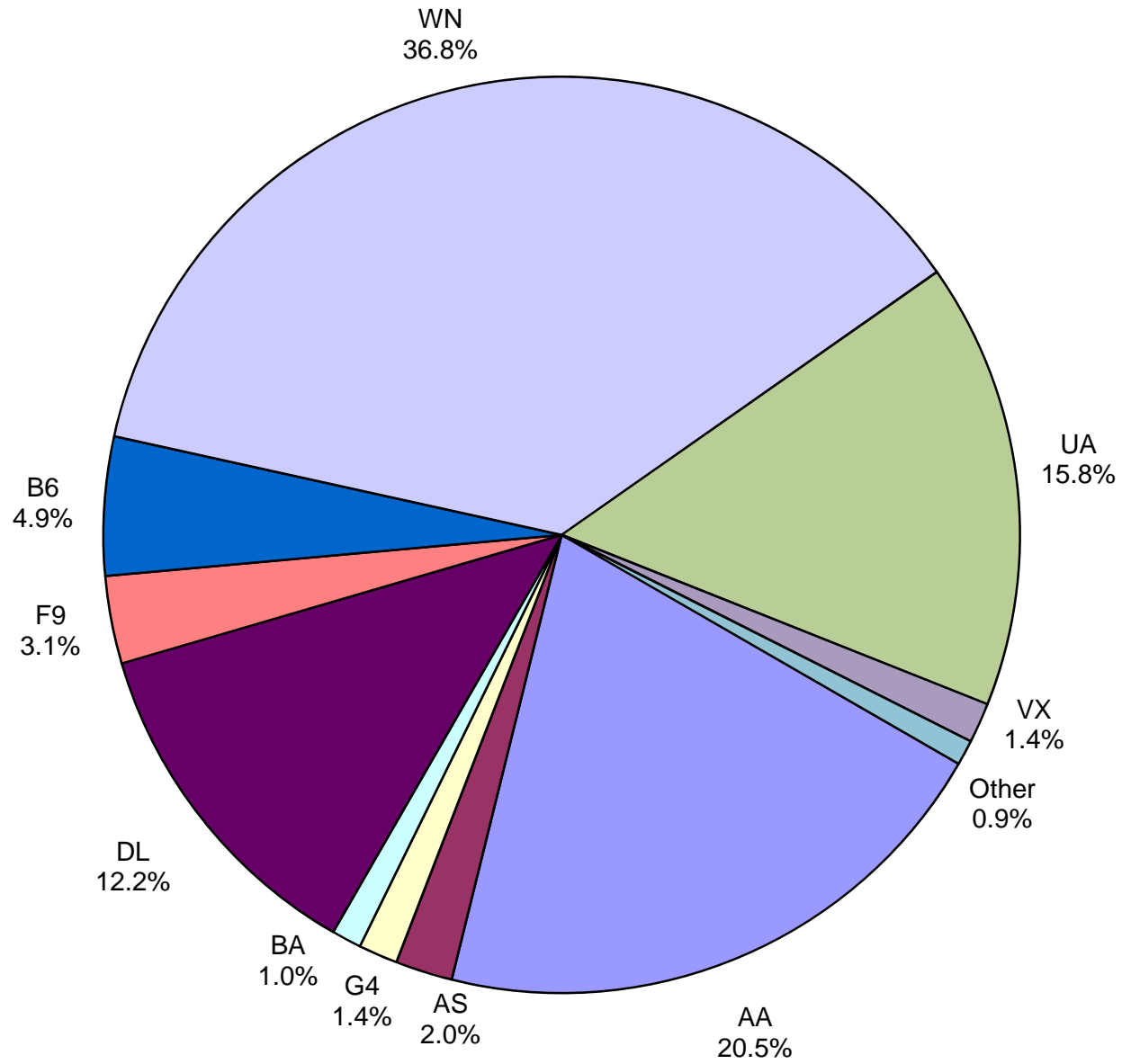
Monthly % Change in Average Daily Passengers



HISTORY OF INTERNATIONAL AIR CARGO



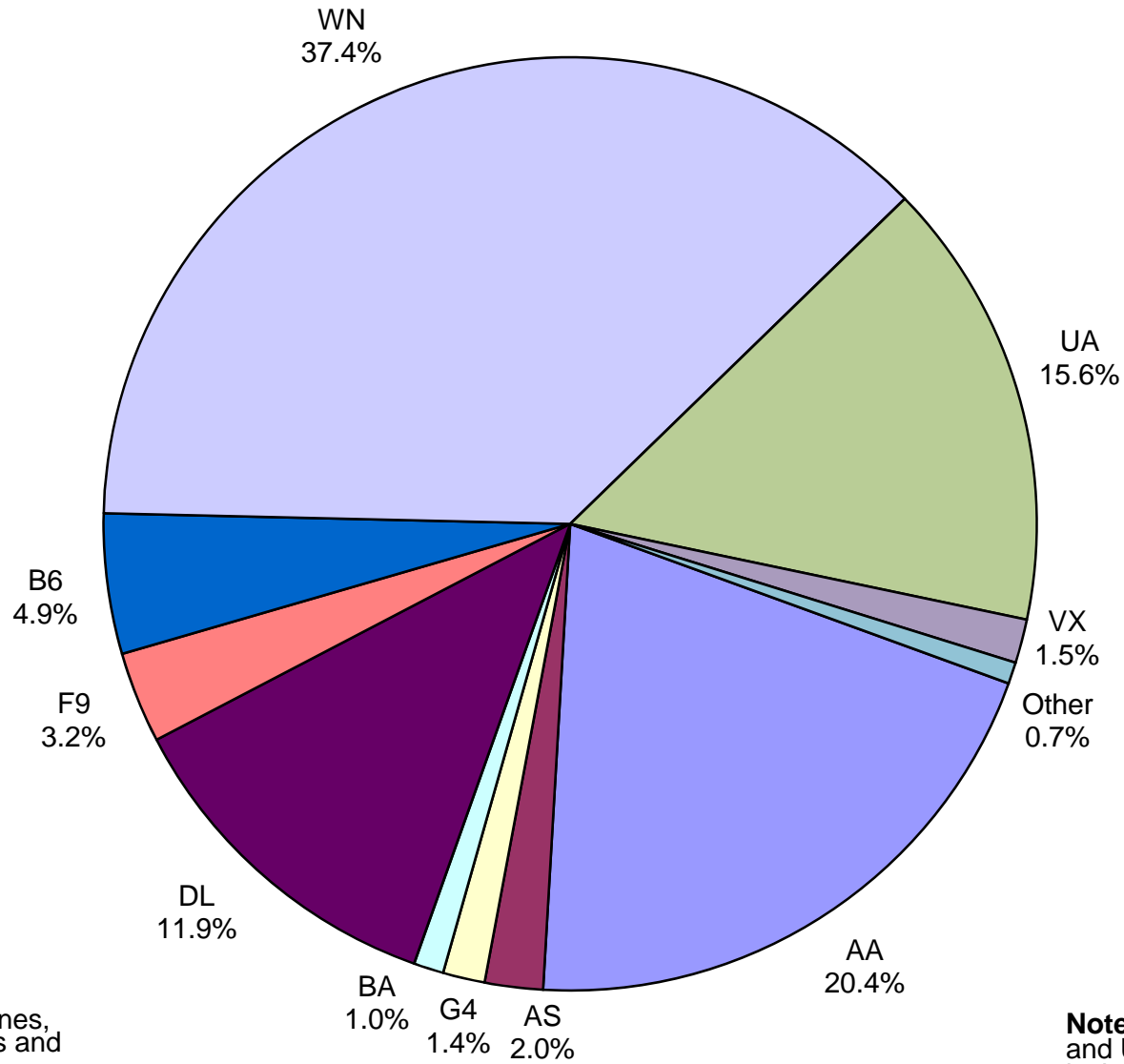
**Total Passengers
August 2016**



Other: Air Canada, Condor Airlines, Sun Country, Texas Sky, Turkish Airlines, Volaris, Xtra Airways

Note: American, Delta and United Airlines percentages include Affiliates.

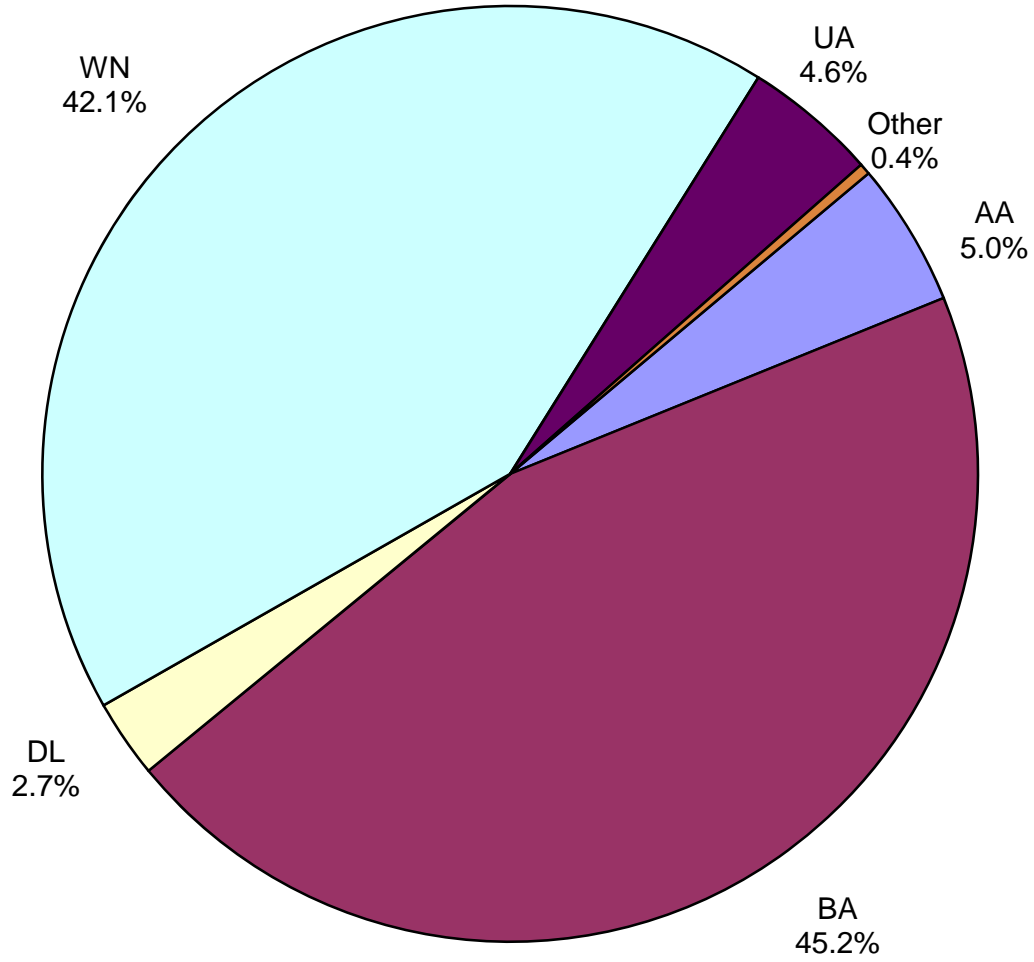
**All Passenger Carriers
Enplaned Revenue Passengers
August 2016**



Other: Air Canada, Condor Airlines, Sun Country, Texas Sky, Volaris and Xtra Airways

Note: American/US Airways, Delta and United Airlines percentages include Affiliates.

**AUS Belly Freight Market Shares
August 2016**



Other = Alaska Airlines

Air Cargo Market Share August 2016

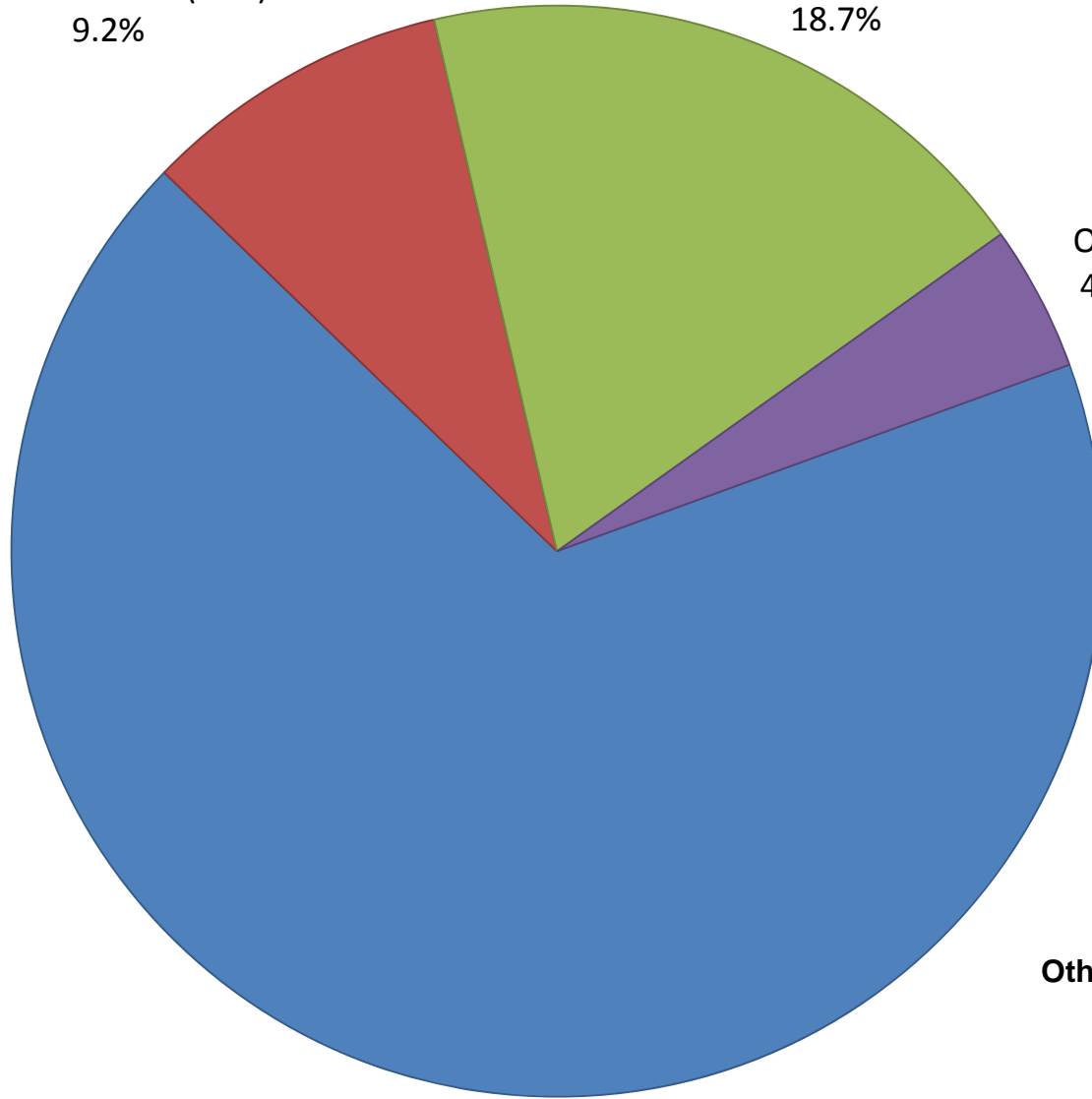
Kalitta Charters (DHL)
9.2%

UPS
18.7%

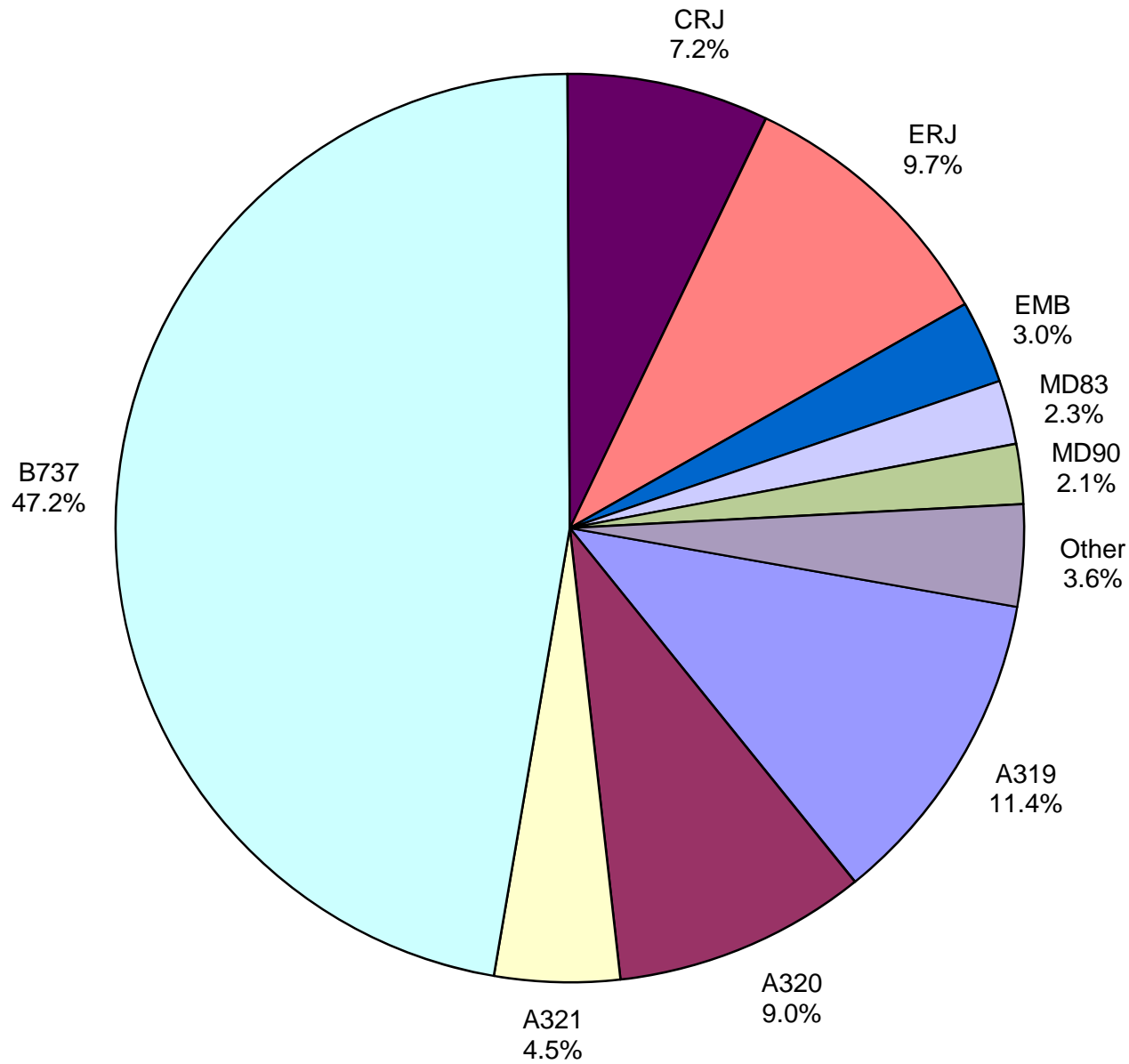
Other
4.3%

Other: Atlas Air and Baron Aviation

FedEx
67.8%

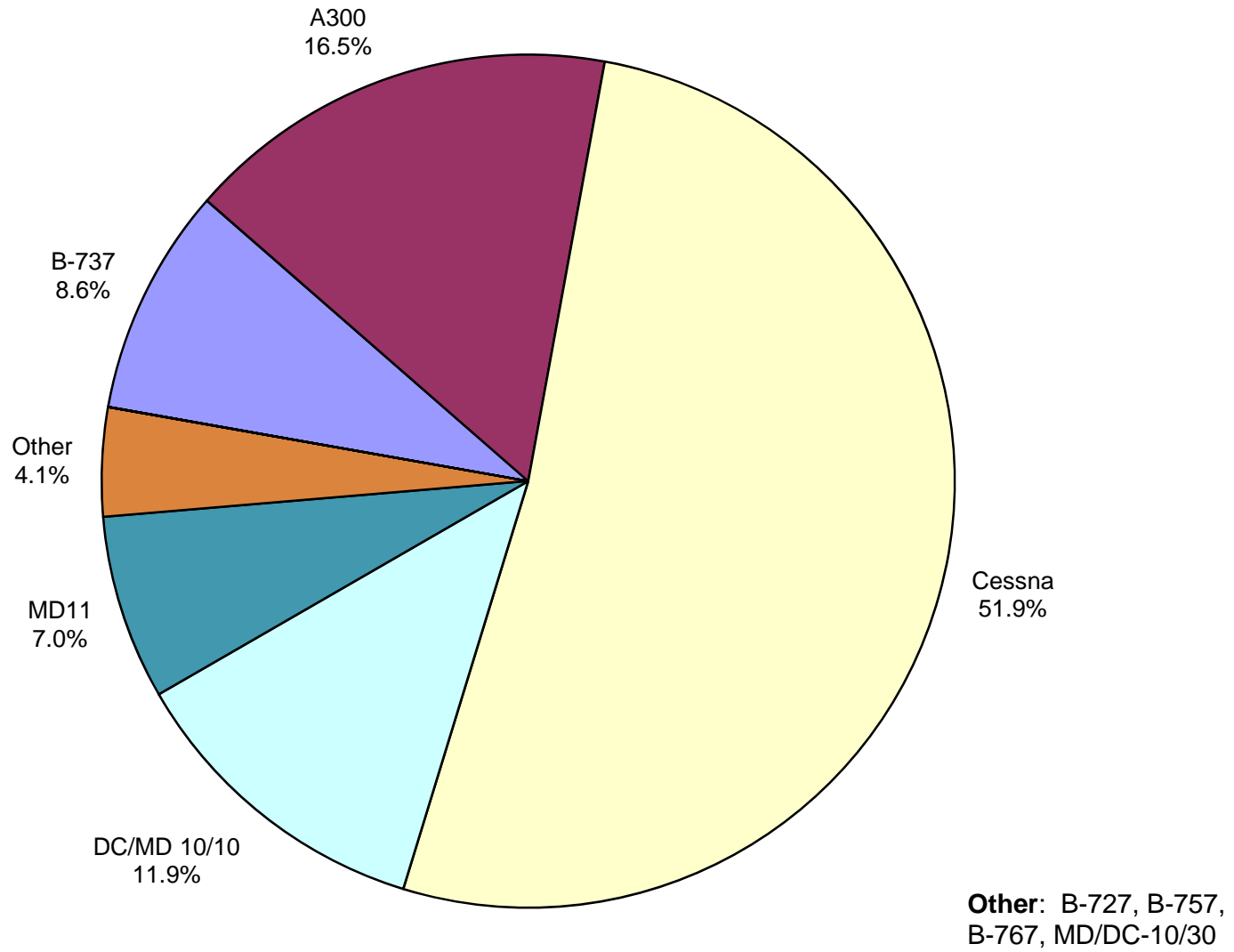


**AUS Scheduled Passenger Aircraft Fleet Mix
August 2016**



Other: B-717, B-757, B-767, B-787, BAE-3200, MD-80 and MD-88

**AUS Scheduled Cargo Aircraft Fleet Mix
August 2016**



Austin-Bergstrom International Airport

PAX Detail Report - August, 2016

Period Company	08/2016	08/2015	Difference	Change	YTD 2016	YTD 2015	YTD Difference	YTD Change	2016 Share	2015 Share	Share Diff
Air Canada	3,269	3,105	164	5.3	27,216	12,065	15,151	125.6	0.3	0.2	0.2
Alaska Airlines, Inc.	21,211	16,426	4,785	29.1	150,359	99,488	50,871	51.1	1.8	1.3	0.6
Allegiant Air, LLC	14,607	10,715	3,892	36.3	115,251	80,926	34,325	42.4	1.4	1.0	0.4
American Airlines, Inc.	216,452	176,324	40,128	22.8	1,679,079	1,342,753	336,326	25.0	20.4	17.2	3.3
Ameristarjet Charter Inc.	0	3	-3	-100.0	14	5	9	180.0	0.0	0.0	0.0
Atlas Air, Inc	0	0	0	0.0	453	558	-105	-18.8	0.0	0.0	0.0
Branson AirExpress, LLC	0	339	-339	-100.0	0	2,107	-2,107	-100.0	0.0	0.0	0.0
British Airways Plc	11,071	10,729	342	3.2	86,903	81,380	5,523	6.8	1.1	1.0	0.0
Condor Airlines (Flugdienst) GmbH	3,161	0	3,161	0.0	7,806	0	7,806	0.0	0.1	0.0	0.1
Delta Air Lines	128,306	129,552	-1,246	-1.0	1,014,977	960,299	54,678	5.7	12.4	12.3	0.1
Frontier Airlines, Inc.	32,659	39,492	-6,833	-17.3	196,311	232,670	-36,359	-15.6	2.4	3.0	-0.6
Iberia Airlines	0	0	0	0.0	246	0	246	0.0	0.0	0.0	0.0
JetBlue Airways Corporation	51,553	47,341	4,212	8.9	385,675	376,470	9,205	2.4	4.7	4.8	-0.1
Kalitta Charters, LLC	0	1	-1	-100.0	0	1	-1	-100.0	0.0	0.0	0.0
Miami Air International Inc.	0	0	0	0.0	0	328	-328	-100.0	0.0	0.0	0.0
Omni Air International	0	0	0	0.0	0	238	-238	-100.0	0.0	0.0	0.0
Public Charters, Inc., d/b/a Texas Sky	162	200	-38	-19.0	1,105	1,909	-804	-42.1	0.0	0.0	0.0
Republic Airlines, Inc.	0	0	0	0.0	0	1,058	-1,058	-100.0	0.0	0.0	0.0
Southwest Airlines	388,151	381,082	7,069	1.9	3,149,308	2,832,717	316,591	11.2	38.3	36.2	2.1
Sun Country Airlines/ MN Airlines, LLC	100	474	-374	-78.9	3,429	1,791	1,638	91.5	0.0	0.0	0.0
Titan Airways Ltd.	0	0	0	0.0	0	160	-160	-100.0	0.0	0.0	0.0
Transportes Aeromar S.A. de C.V.	0	0	0	0.0	0	170	-170	-100.0	0.0	0.0	0.0
Turkish Airlines	376	0	376	0.0	376	0	376	0.0	0.0	0.0	0.0
United Airlines, Inc.	166,186	178,370	-12,184	-6.8	1,276,043	1,302,291	-26,248	-2.0	15.5	16.6	-1.1
US Airways Group, Inc.	0	47,240	-47,240	-100.0	0	343,789	-343,789	-100.0	0.0	4.4	-4.4
Virgin America Inc.	14,906	21,604	-6,698	-31.0	114,891	149,038	-34,147	-22.9	1.4	1.9	-0.5
Volaris	2,030	0	2,030	0.0	2,030	0	2,030	0.0	0.0	0.0	0.0
Xtra Airways/Casino Express	296	0	296	0.0	1,167	0	1,167	0.0	0.0	0.0	0.0
Report Totals	1,054,496	1,062,997	-8,501	-0.8%	8,212,639	7,822,211	390,428	5.0%			

Statistics Included in Report:

Domestic Passengers: Enplaned Revenue, Deplaned Revenue, Enplaned Non-Revenue, Deplaned Non-Revenue
 International Passengers: Enplaned Revenue, Deplaned Revenue, Enplaned Non-Revenue, Deplaned Non-Revenue
 International Pre-Cleared Passengers: Enplaned Revenue, Deplaned Revenue, Enplaned Non-Revenue, Deplaned Non-Revenue

Austin-Bergstrom International Airport

Summary Landing Report

Landing Type: Total

Month	2016		2015		2014		% Change 2016 - 2015		% Change 2015 - 2014	
	Count	Weight	Count	Weight	Count	Weight	Count	Weight	Count	Weight
January	4,622	560,718,408	4,480	530,688,382	4,213	478,945,673	3.17%	5.66%	6.34%	10.80%
February	4,387	527,452,920	3,992	477,489,019	3,839	437,160,505	9.89%	10.46%	3.99%	9.23%
March	5,151	639,655,137	4,872	584,604,521	4,746	552,992,572	5.73%	9.42%	2.65%	5.72%
April	4,892	614,643,711	4,875	593,462,176	4,515	521,133,372	0.35%	3.57%	7.97%	13.88%
May	5,096	630,853,941	5,161	625,876,151	4,749	553,415,664	-1.26%	0.80%	8.68%	13.09%
June	5,179	651,537,449	5,239	644,690,908	4,821	569,196,868	-1.15%	1.06%	8.67%	13.26%
July	5,233	663,015,597	5,503	676,131,170	5,000	590,375,055	-4.91%	-1.94%	10.06%	14.53%
August	5,181	660,099,361	5,277	652,770,571	4,752	562,685,827	-1.82%	1.12%	11.05%	16.01%
September			4,833	598,547,454	4,513	546,749,431			7.09%	9.47%
October			4,891	611,952,269	4,842	589,981,037			1.01%	3.72%
November			4,815	605,234,834	4,532	546,643,220			6.24%	10.72%
December			5,100	633,215,540	4,826	569,752,623			5.68%	11.14%
Totals for Selected Period	39,741	4,947,976,524	39,399	4,785,712,898	36,635	4,265,905,536	0.87%	3.39%	7.54%	12.19%
Yearly Totals	39,741	4,947,976,524	59,038	7,234,662,995	55,348	6,519,031,847			6.67%	10.98%