

Austin-Bergstrom International Airport

Aviation Activity Report

Calendar Year 2013 vs 2012

	11/2013	11/2012	Percent Change	01/2013 - 11/2013	01/2012 - 11/2012	Percent Change
<u>Passenger Activity</u>						
Domestic Enplaned Revenue	411,163	393,435	4.51	4,437,379	4,198,927	5.68
Domestic Deplaned Revenue	406,891	391,871	3.83	4,460,993	4,212,961	5.89
International Enplaned Revenue	3,201	2,534	26.32	23,110	12,001	92.57
International Deplaned Revenue	2,828	2,076	36.22	25,683	12,578	104.19
Domestic Enplaned Non-Revenue	8,885	9,055	-1.88	113,602	108,296	4.90
Domestic Deplaned Non-Revenue	8,133	8,144	-0.14	99,885	99,157	0.73
International Enplaned Non-Revenue	29	0	0.00	129	0	0.00
International Deplaned Non-Revenue	55	0	0.00	220	12	1,733.33
South Terminal-Intl Enplaned Revenue	0	0	0.00	0	0	0.00
South Terminal-Intl Deplaned Revenue	0	0	0.00	0	0	0.00
South Terminal-Intl Enplaned Non-Revenue	0	0	0.00	0	0	0.00
South Terminal-Intl Deplaned Non-Revenue	0	0	0.00	0	0	0.00
Passenger Totals	841,185	807,115	4.22	9,161,001	8,643,932	5.98

CURRENT PASSENGER RECORD = 922,615 RECORD SET = JULY 2013

Aircraft Operations

Air Carrier	8,437	8,182	3.12	93,358	89,680	4.10
Commuter & Air Taxi	1,846	1,634	12.97	15,852	14,717	7.71
Military	450	963	-53.27	5,616	5,895	-4.73
General Aviation						
Itinerant	4,407	4,976	-11.43	45,603	46,285	-1.47
Local	142	76	86.84	2,228	1,824	22.15
Total G.A.	4,549	5,052	-9.96	47,831	48,109	-0.58
Total Operations	15,282	15,831	-3.47	162,657	158,401	2.69

Austin-Bergstrom International Airport

Aviation Activity Report

Calendar Year 2013 vs 2012

	11/2013	11/2012	Percent Change	01/2013 - 11/2013	01/2012 - 11/2012	Percent Change
<u>Cargo Activity</u>						
Mail						
Domestic Enplaned Mail	137,313	90,650	51.48	1,258,351	914,771	37.56
Domestic Deplaned Mail	185,971	237,557	-21.72	1,847,058	2,052,273	-10.00
International Enplaned Mail	0	0	0.00	0	0	0.00
International Deplaned Mail	0	0	0.00	2,404	0	0.00
South Terminal-Intl Enplaned Mail	0	0	0.00	0	0	0.00
Mail Totals	323,284	328,207	-1.50	3,107,813	2,967,044	4.74
Cargo						
Domestic Enplaned Cargo	5,029,312	6,377,027	-21.13	57,034,601	57,685,777	-1.13
Domestic Deplaned Cargo	5,963,622	5,793,303	2.94	65,064,268	62,112,918	4.75
International Enplaned Cargo	1,491,966	454,454	228.30	6,092,875	4,345,985	40.20
International Deplaned Cargo	1,424,187	1,813,778	-21.48	5,848,032	5,272,067	10.92
South Terminal-Intl Enplaned Cargo	0	0	0.00	0	0	0.00
South Terminal-Intl Deplaned Cargo	0	0	0.00	0	0	0.00
Cargo Totals	13,909,087	14,438,562	-3.67	134,039,776	129,416,747	3.57
Belly Freight						
Domestic Enplaned Belly Freight	245,099	311,031	-21.20	3,100,554	5,711,257	-45.71
Domestic Deplaned Belly Freight	448,238	373,535	20.00	4,716,768	4,787,703	-1.48
International Enplaned Belly Freight	0	0	0.00	0	0	0.00
International Deplaned Belly Freight	0	0	0.00	0	0	0.00
South Terminal-Intl Enplaned Belly Frt	0	0	0.00	0	0	0.00
South Terminal-Intl Deplaned Belly Frt	0	0	0.00	0	0	0.00
Belly Freight Totals	693,337	684,566	1.28	7,817,322	10,498,960	-25.54
Cargo Totals (Mail, Cargo, Belly Freight)	14,925,708	15,451,335	-3.40	144,964,911	142,882,751	1.46

CURRENT CARGO RECORD = 40,215,518

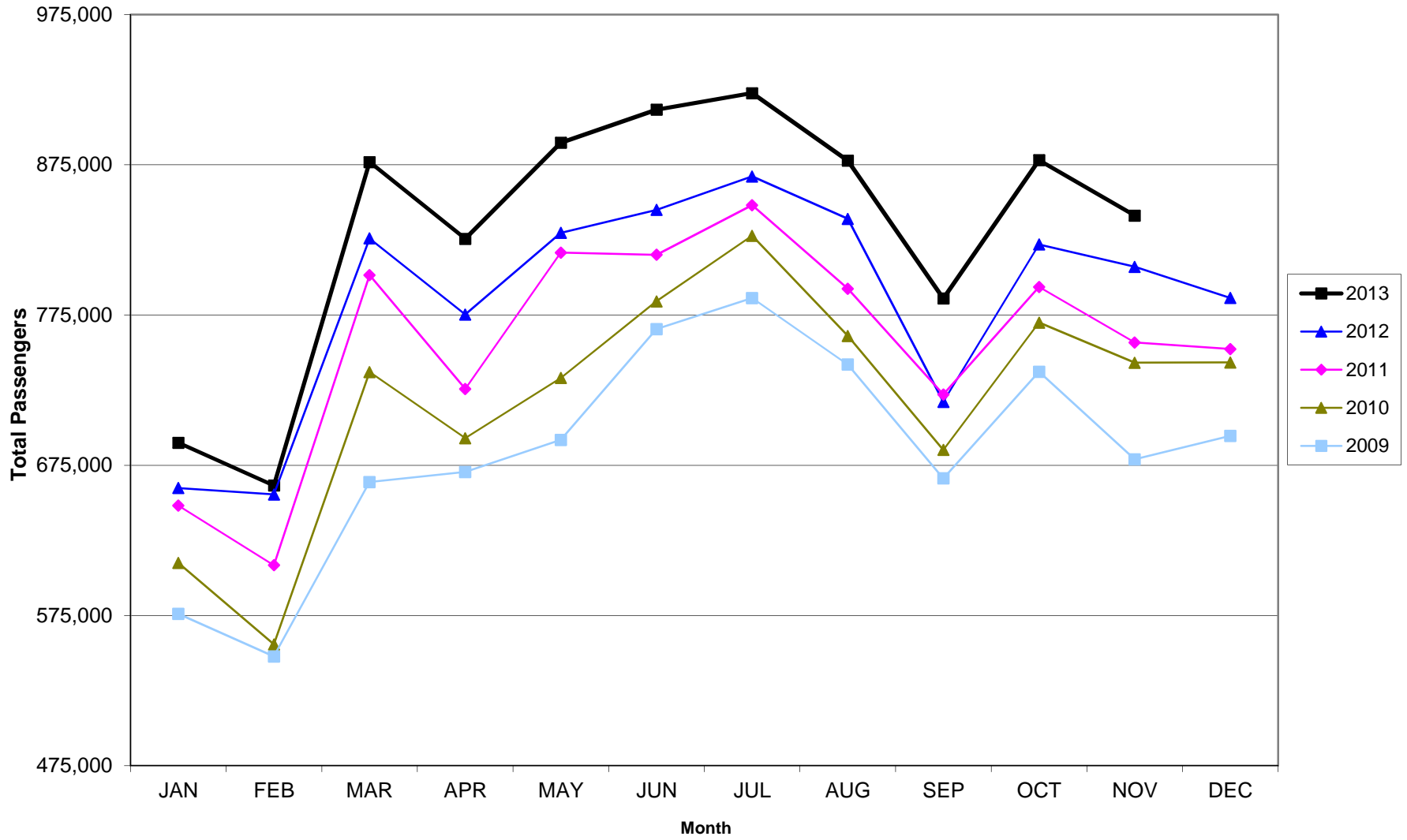
RECORD SET = MARCH 2001

AUS – Airline Codes

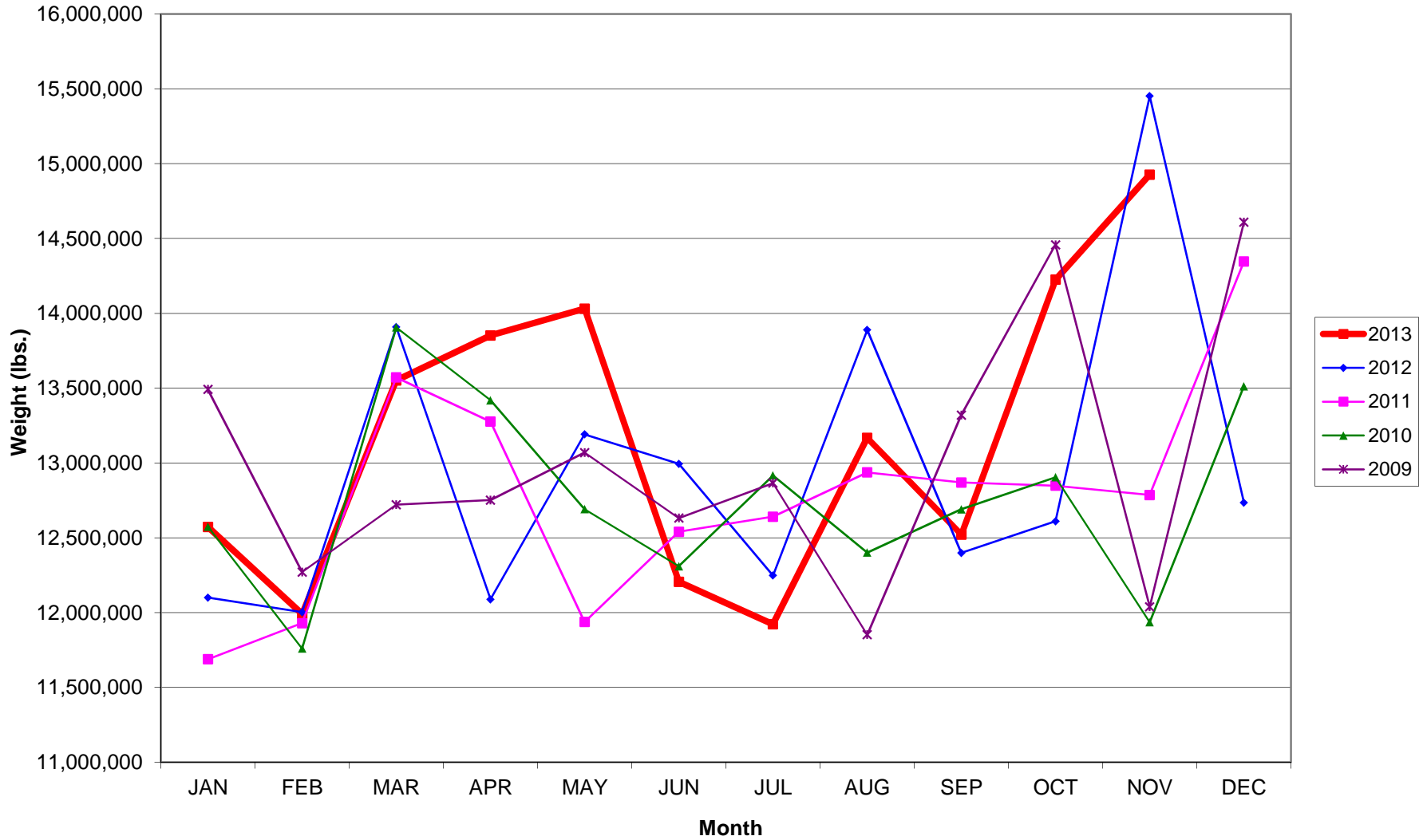
November 2013

<u>Code</u>	<u>Carrier</u>
AM	AeroMexico Airlines/Aerovias de Mexico, S.A. de C.V.
AS	Alaska Airlines, Inc.
G4	Allegiant Air, LLC
AA	American Airlines, Inc. Post-Petition (DIP)
DL	Delta Airlines
F9	Frontier Airlines
B6	JetBlue Airways Corp.
GL	Miami Air International Inc.
NTM	North American Airlines
RW	Republic Airlines, Inc.
WN	Southwest Airlines
SY	Sun Country Airlines/MN Airlines, Inc.
VW	Transportes Aeromar S.A. de C.V.
UA	United Airlines, Inc.
US	US Airways Group, Inc.
VX	Virgin America Inc.
V2	Vision Airlines, Inc.

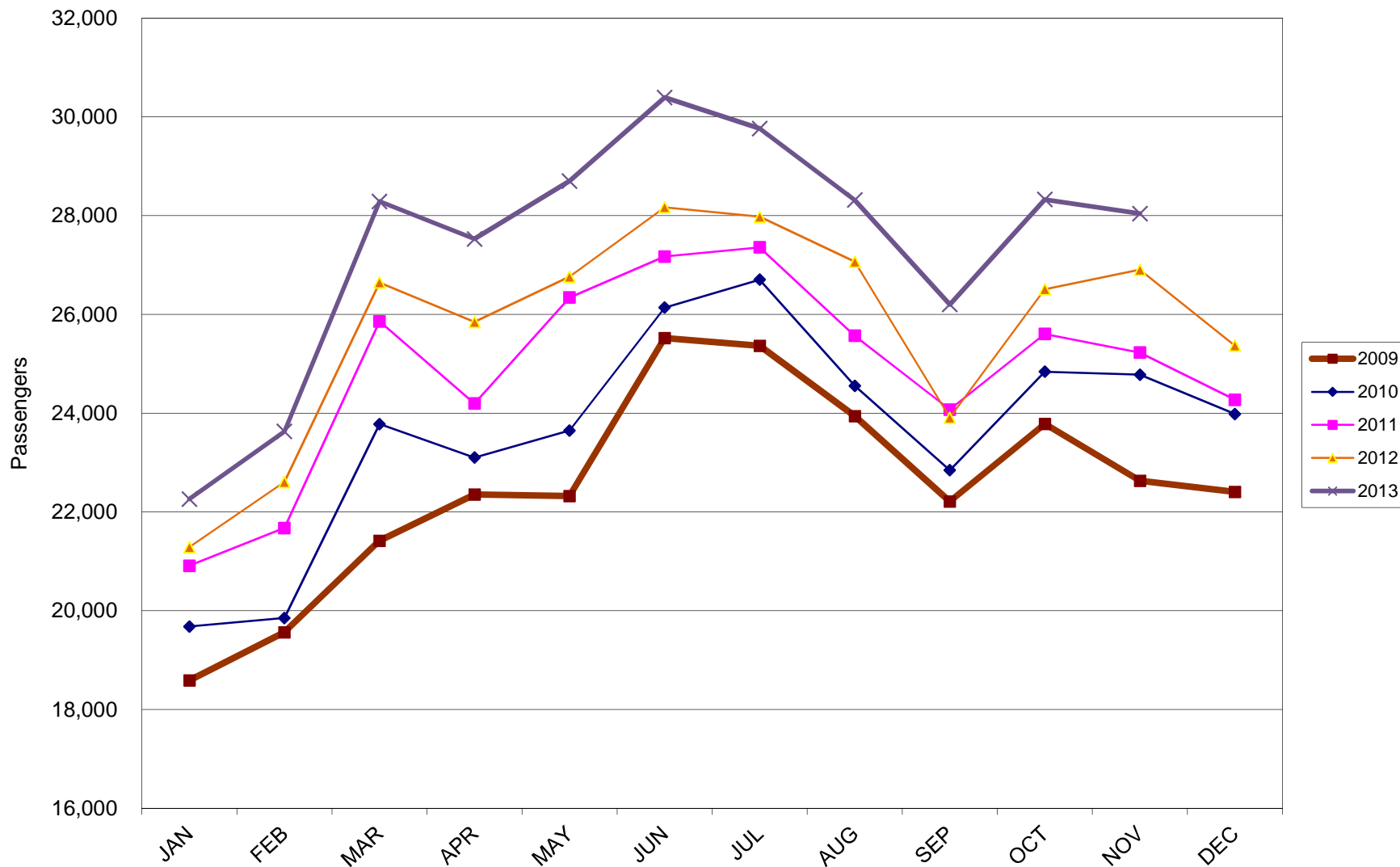
AUSTIN PASSENGER TRAFFIC 5 Year Trend



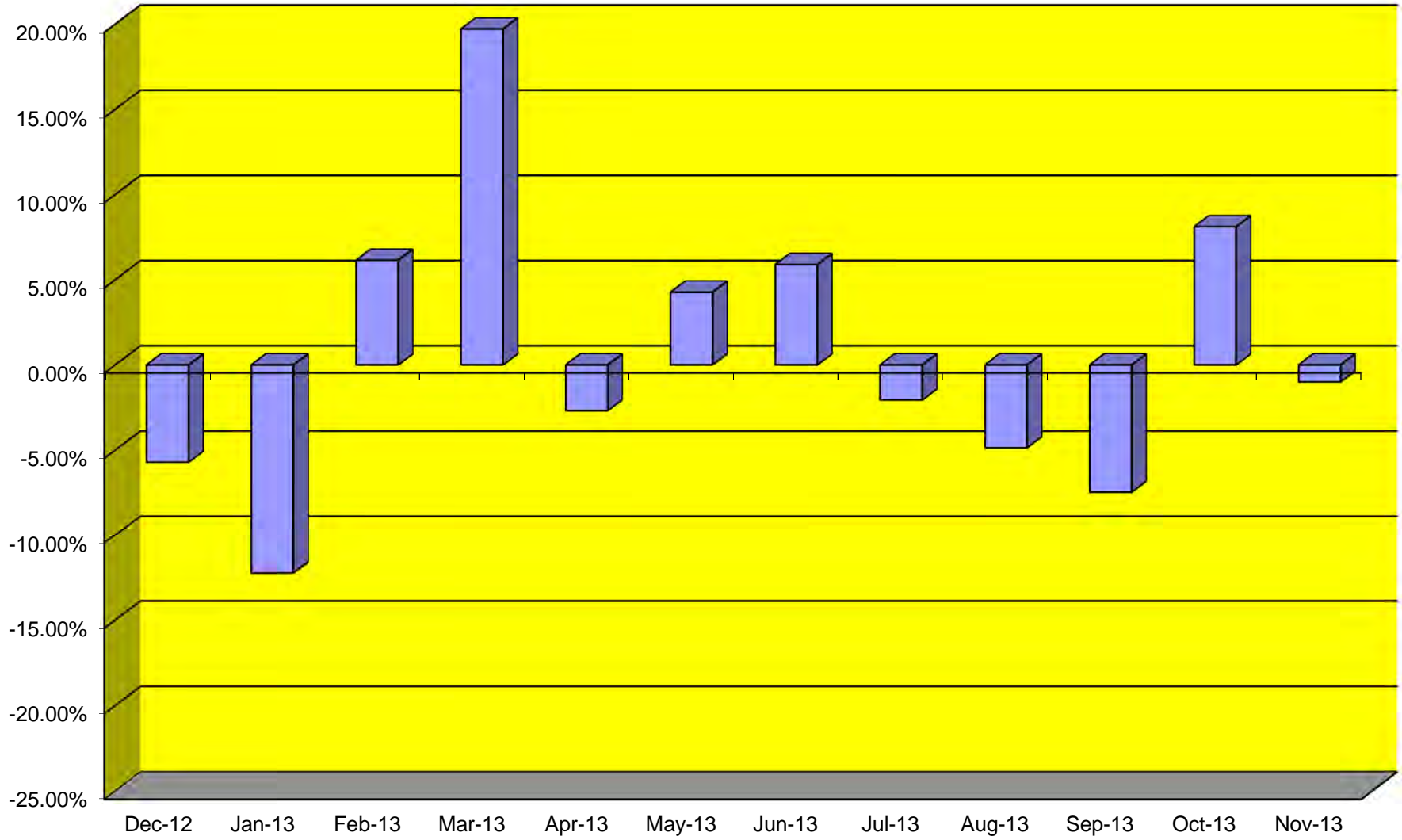
TOTAL CARGO POUNDAGE - AUSTIN, TEXAS



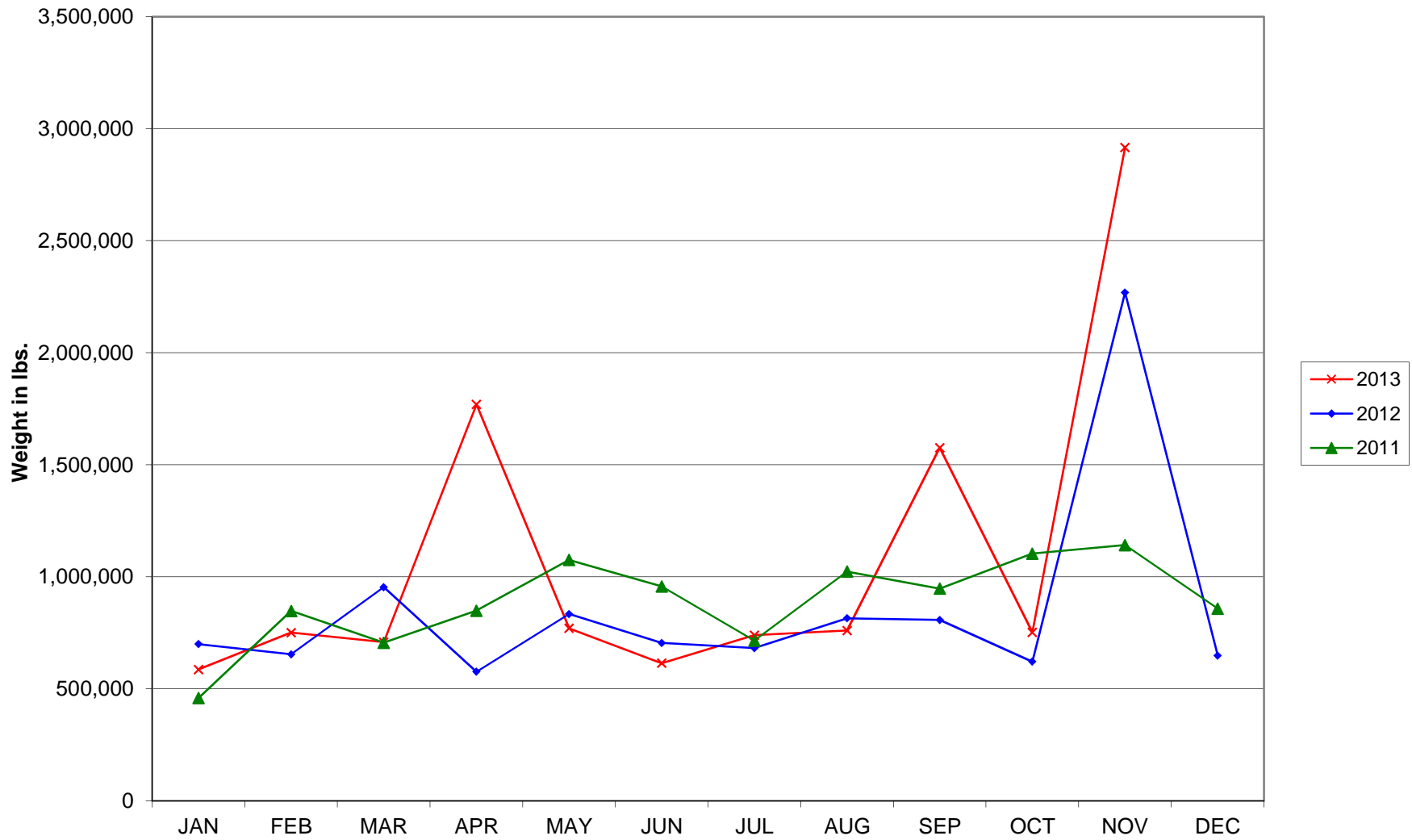
Average Daily Passengers



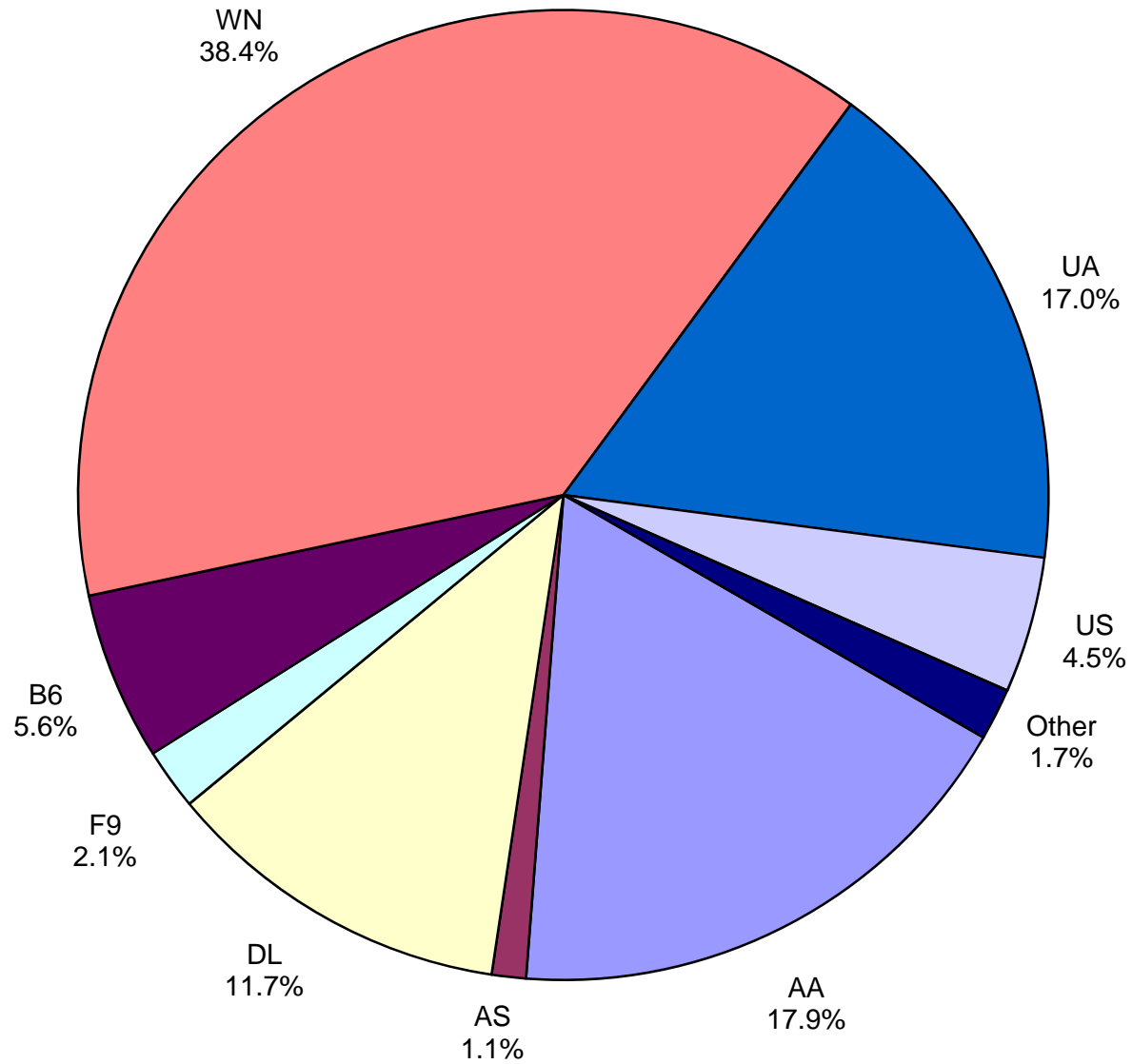
Monthly % Change in Average Daily Passengers



History of International Air Cargo



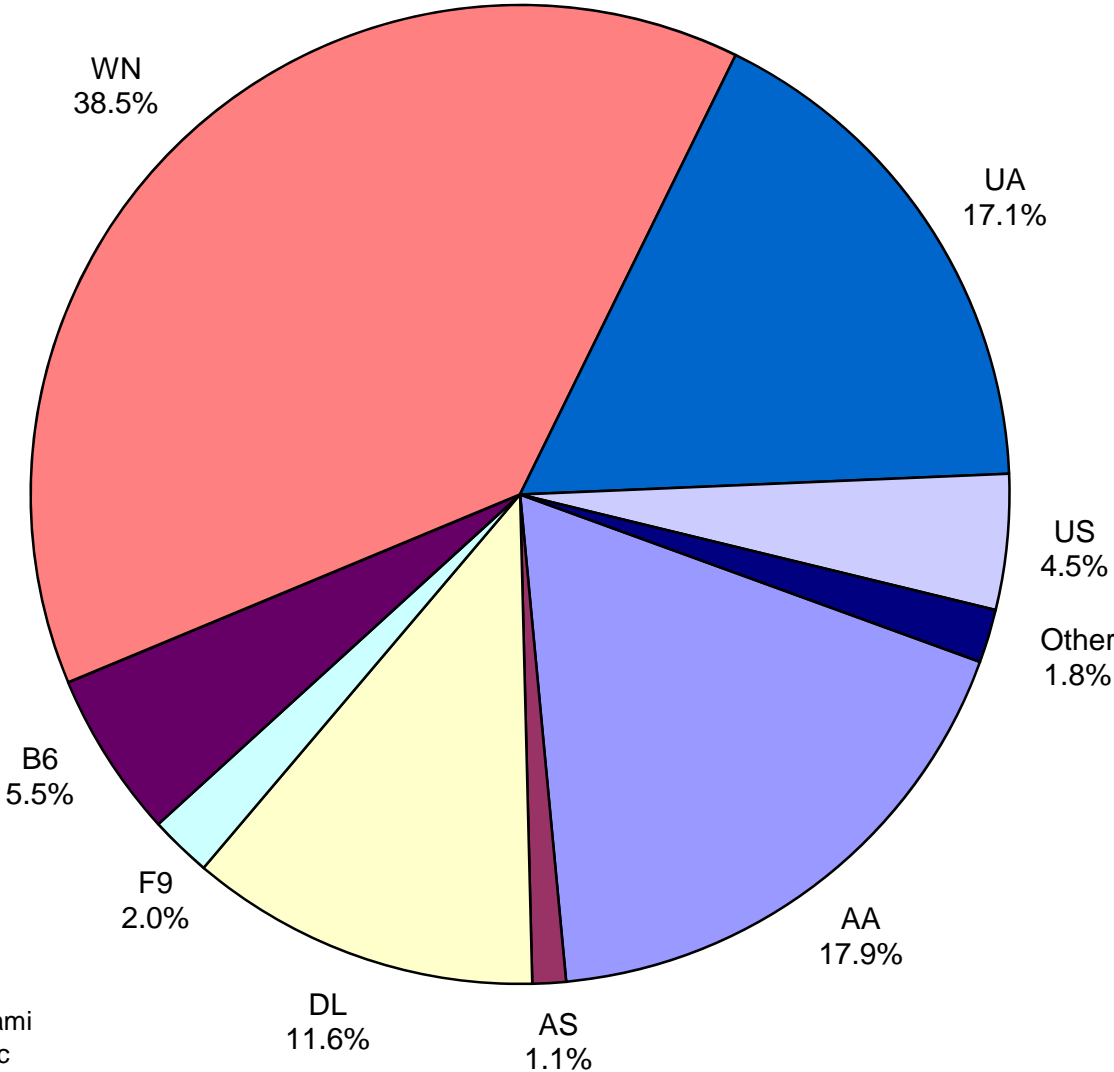
**Total Passengers
November 2013**



Other: AeroMexico, Allegiant Air, Miami Air, Intl., North American Airlines, Republic Airlines, Sun Country, Transportes Aeromar, Virgin America and Vision Airlines

Note: Delta, United Airlines and US Airways percentages includes Affiliates.

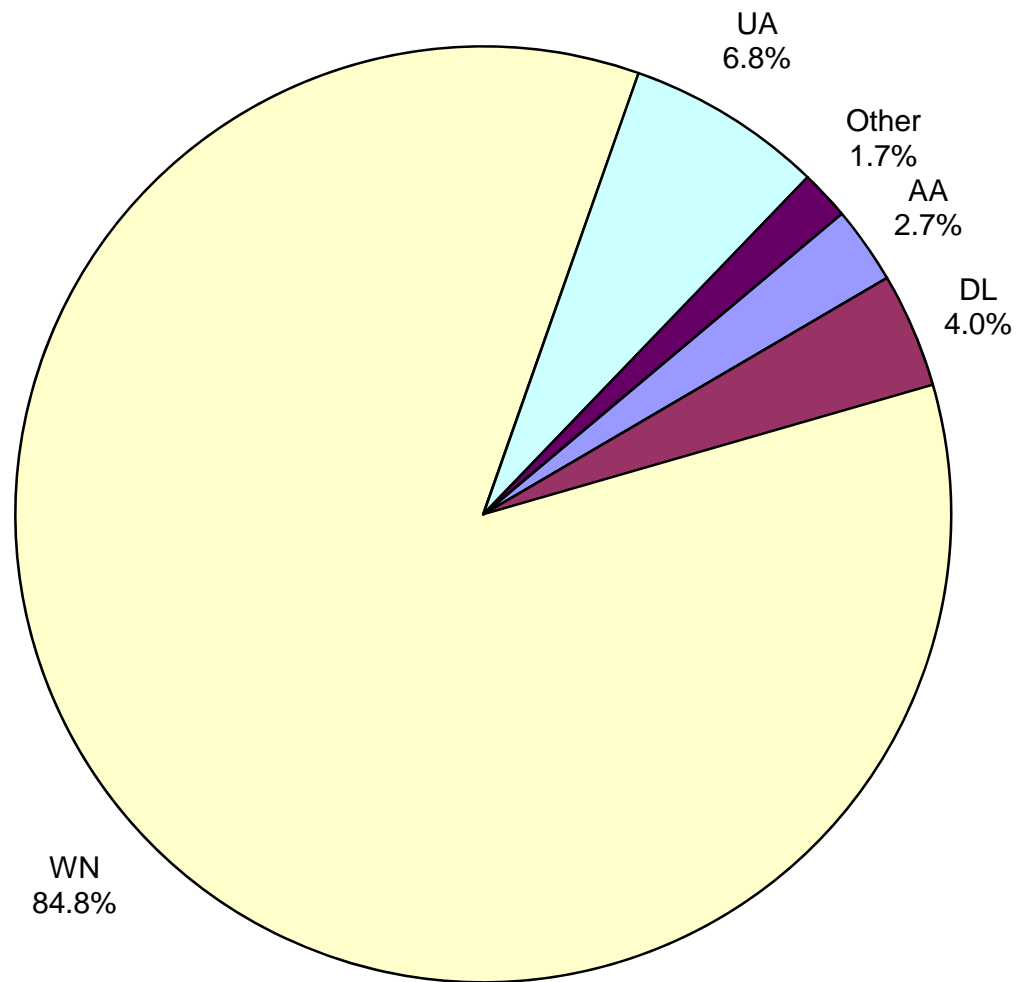
**All Passenger Carriers
Enplaned Revenue Passengers
November 2013**



Other: : AeroMexico, Allegiant Air, Miami Air, Intl., North American Airlines, Republic Airlines, Sun Country, Transportes Aeromar, Virgin America and Vision Airlines

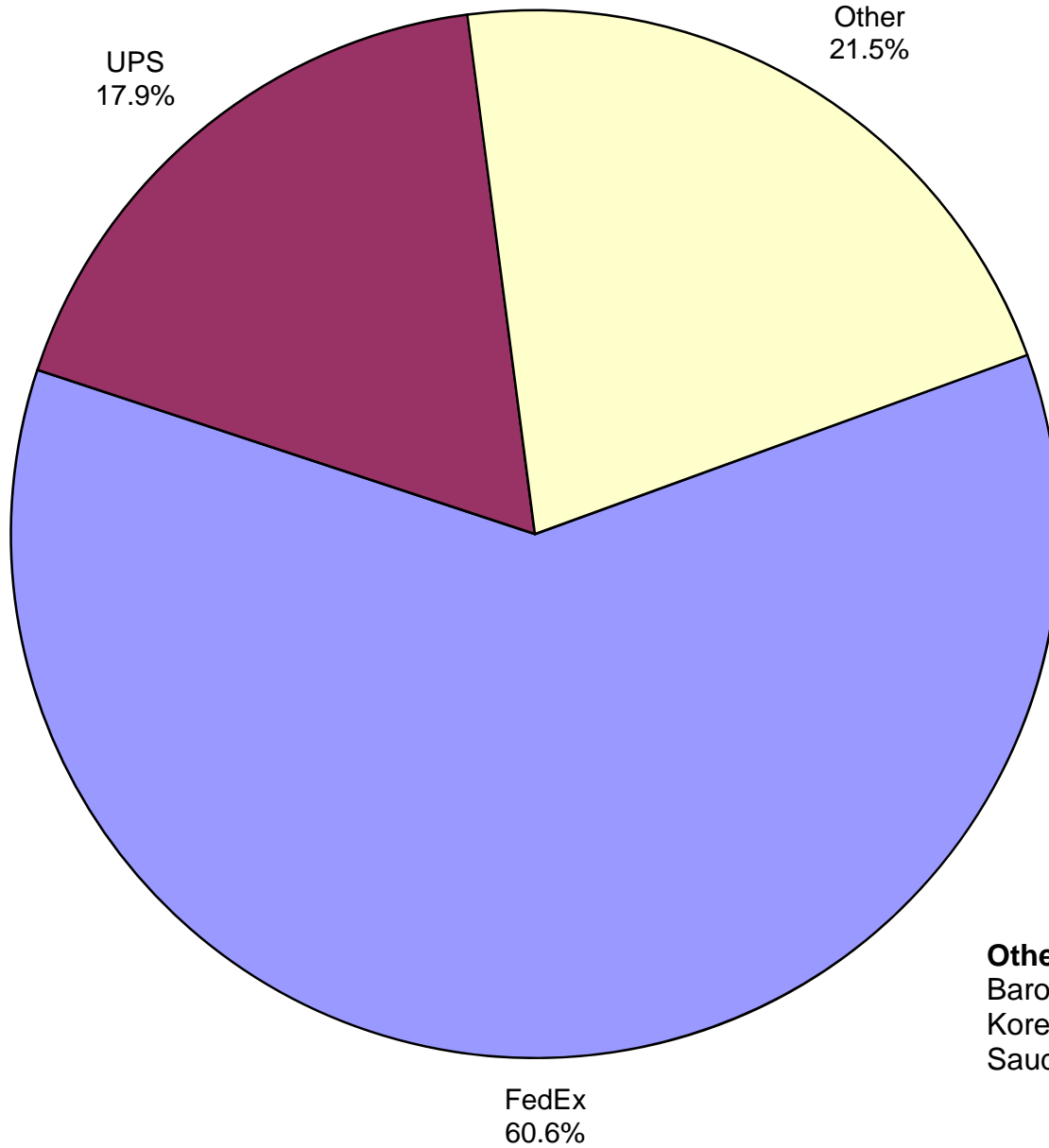
Note: Delta, United Airlines and US Airways percentages includes Affiliates.

**AUS Belly Freight Market Shares
November 2013**



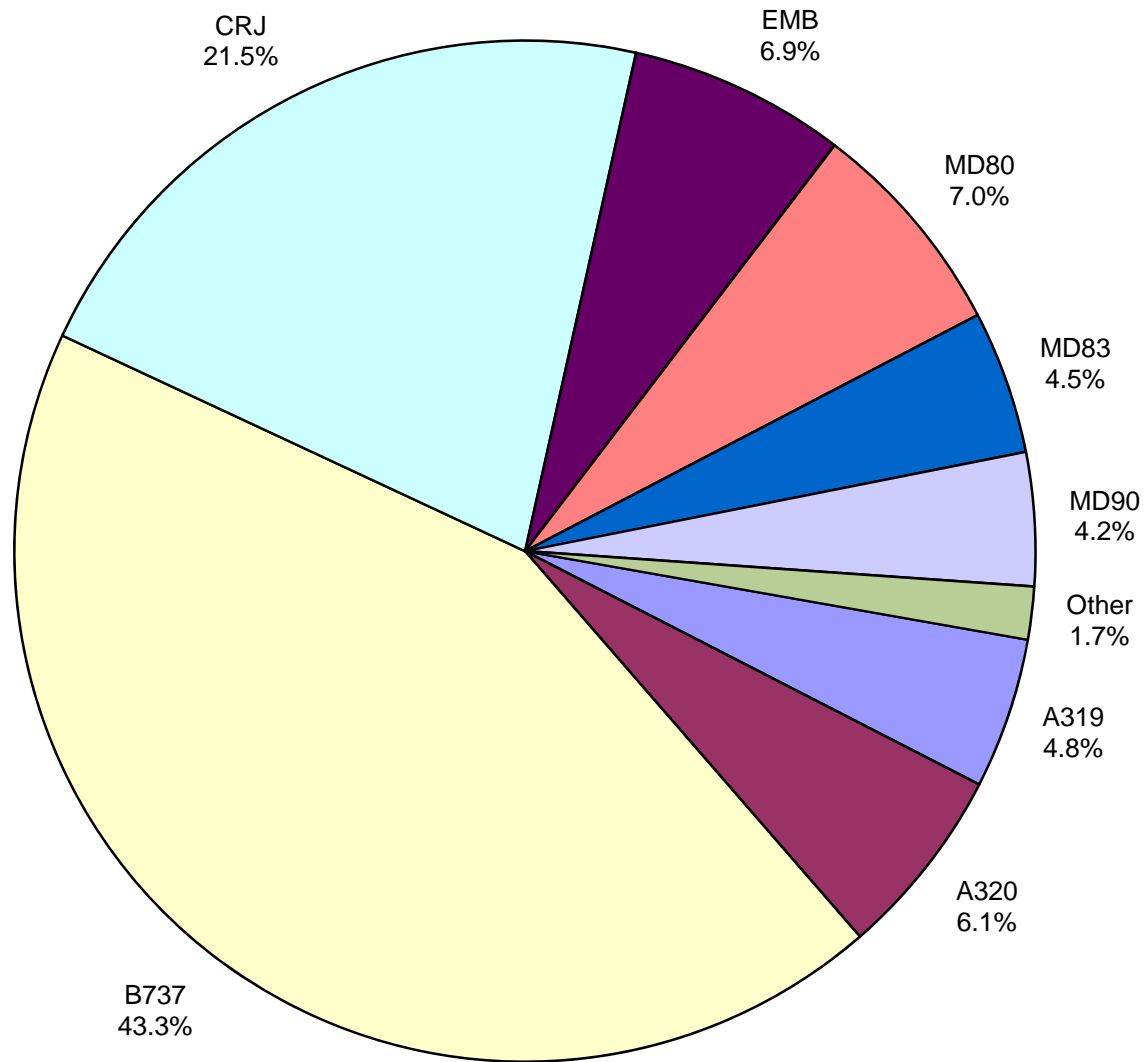
Other = Alaska Airlines, JetBlue and US Airways.

**Air Cargo Market Shares
November 2013**



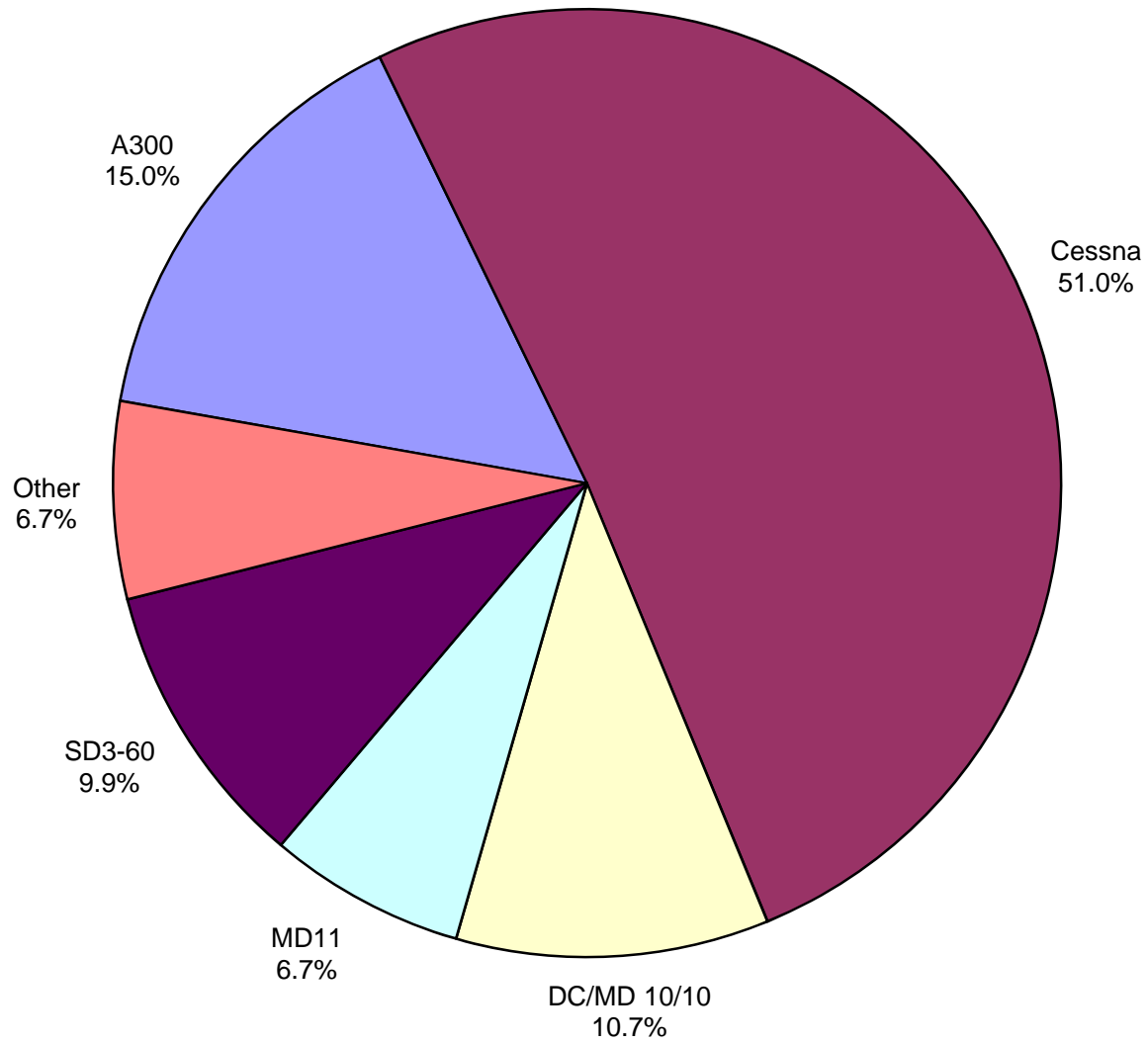
Other: Air Cargo Carriers, Atlas Air, Inc., Baron Aviation, British Airways, Cargolux, Korean Air Cargo, Martinaire Partners, Saudia Cargo, Singapore Airlines Cargo

**AUS Scheduled Passenger Aircraft Fleet Mix
November 2013**



Other: B-717, B-757, B-767, ERJ and MD-88

**AUS Scheduled Cargo Aircraft Fleet Mix
November 2013**



Other: A-310, B-747, B-757
and DC/MD-10/30

Austin-Bergstrom International Airport

PAX Detail Report - November, 2013

Period Company	11/2013	11/2012	YTD		YTD 2013	YTD 2012	2013		2012 Share	Share Share	Diff
			Difference	Change			Difference	Change			
AeroMexico Airlines/Aerovias de Mexico, S.A. de C.V.	638	882	-244	-27.7	638	882	-244	-27.7	0.0	0.0	0.0
Alaska Airlines, Inc.	9,529	9,309	220	2.4	105,157	103,823	1,334	1.3	1.1	1.2	-0.1
Allegiant Air	0	0	0	0.0	1,520	2,440	-920	-37.7	0.0	0.0	0.0
Allegiant Air, LLC	5,223	0	5,223	0.0	5,491	0	5,491	0.0	0.1	0.0	0.1
American Airlines, Inc. - Post-Petition (DIP)	150,531	155,532	-5,001	-3.2	1,703,857	1,728,616	-24,759	-1.4	18.6	20.0	-1.4
Ameristarjet Charter Inc.	0	0	0	0.0	96	2	94	4,700.0	0.0	0.0	0.0
Continental Airlines	0	55,417	-55,417	-100.0	103,392	631,683	-528,291	-83.6	1.1	7.3	-6.2
Delta Air Lines	97,971	100,409	-2,438	-2.4	1,104,770	1,048,330	56,440	5.4	12.1	12.1	-0.1
Express Jet Airlines, Inc.	0	2,002	-2,002	-100.0	46,979	34,701	12,278	35.4	0.5	0.4	0.1
Frontier Airlines, Inc.	17,163	17,048	115	0.7	149,455	187,976	-38,521	-20.5	1.6	2.2	-0.5
GoJet Airlines d/b/a United Express	0	11,297	-11,297	-100.0	139,517	135,548	3,969	2.9	1.5	1.6	0.0
JetBlue Airways Corporation	47,238	42,568	4,670	11.0	588,122	531,186	56,936	10.7	6.4	6.1	0.3
Mesa Airlines Inc - DIP	0	33,119	-33,119	-100.0	288,544	353,766	-65,222	-18.4	3.1	4.1	-0.9
Miami Air International Inc.	676	678	-2	-0.3	1,018	678	340	50.1	0.0	0.0	0.0
North American Airlines/World Airways	192	0	192	0.0	192	0	192	0.0	0.0	0.0	0.0
Republic Airlines, Inc.	189	0	189	0.0	1,890	0	1,890	0.0	0.0	0.0	0.0
Shuttle America Corporation	0	5,311	-5,311	-100.0	85,595	44,196	41,399	93.7	0.9	0.5	0.4
SkyWest Airlines, Inc	0	32,895	-32,895	-100.0	346,353	357,111	-10,758	-3.0	3.8	4.1	-0.4
Southwest Airlines	323,302	309,453	13,849	4.5	3,556,995	3,275,969	281,026	8.6	38.8	37.9	0.9
Sun Country Airlines/ MN Airlines, LLC	165	0	165	0.0	1,096	554	542	97.8	0.0	0.0	0.0
Transportes Aeromar S.A. de C.V.	969	0	969	0.0	1,148	0	1,148	0.0	0.0	0.0	0.0
United Airlines, Inc.	142,774	24,670	118,104	478.7	708,975	180,439	528,536	292.9	7.7	2.1	5.7
US Airways Group, Inc.	38,137	6,263	31,874	508.9	173,787	24,518	149,269	608.8	1.9	0.3	1.6
US Marshall Service / JPATS	0	0	0	0.0	0	1	-1	-100.0	0.0	0.0	0.0
Virgin America Inc.	6,230	0	6,230	0.0	44,810	0	44,810	0.0	0.5	0.0	0.5
Vision Airlines, Inc.	258	262	-4	-1.5	1,440	1,513	-73	-4.8	0.0	0.0	0.0
World Atlantic Airlines	0	0	0	0.0	164	0	164	0.0	0.0	0.0	0.0
Report Totals	841,185	807,115	34,070	4.2%	9,161,001	8,643,932	517,069	6.0%			

Statistics Included in Report:

Domestic Passengers: Enplaned Revenue, Deplaned Revenue, Enplaned Non-Revenue, Deplaned Non-Revenue
 International Passengers: Enplaned Revenue, Deplaned Revenue, Enplaned Non-Revenue, Deplaned Non-Revenue

Austin-Bergstrom International Airport

Summary Landing Report

Landing Type: Total

Month	2013		2012		2011		% Change 2013 - 2012		% Change 2012 - 2011	
	Count	Weight	Count	Weight	Count	Weight	Count	Weight	Count	Weight
January	4,176	469,844,487	4,033	441,029,354	4,214	463,934,037	3.55%	6.53%	-4.30%	-4.94%
February	3,824	428,117,442	3,892	432,535,353	3,776	417,430,253	-1.75%	-1.02%	3.07%	3.62%
March	4,660	536,989,561	4,372	496,635,886	4,539	498,238,970	6.59%	8.13%	-3.68%	-0.32%
April	4,425	504,739,959	4,260	479,535,174	4,274	479,035,366	3.87%	5.26%	-0.33%	0.10%
May	4,687	545,881,910	4,385	509,470,460	4,564	500,806,412	6.89%	7.15%	-3.92%	1.73%
June	4,680	534,286,437	4,425	503,932,220	4,378	490,983,485	5.76%	6.02%	1.07%	2.64%
July	4,788	547,957,989	4,586	524,142,423	4,499	504,634,624	4.40%	4.54%	1.93%	3.87%
August	4,737	541,522,098	4,532	519,056,485	4,415	499,285,697	4.52%	4.33%	2.65%	3.96%
September	4,320	497,853,836	4,181	484,324,879	4,226	477,495,780	3.32%	2.79%	-1.06%	1.43%
October	4,613	540,694,783	4,424	512,451,397	4,309	490,427,499	4.27%	5.51%	2.67%	4.49%
November	4,448	517,542,366	4,283	504,246,217	4,078	460,449,178	3.85%	2.64%	5.03%	9.51%
December			4,391	498,622,124	4,234	473,997,984			3.71%	5.19%
Totals for Selected Period	49,358	5,665,430,868	47,373	5,407,359,848	47,272	5,282,721,301	4.19%	4.77%	0.21%	2.36%
Yearly Totals	49,358	5,665,430,868	51,764	5,905,981,972	51,506	5,756,719,285			0.50%	2.59%