

Austin-Bergstrom International Airport

Aviation Activity Report

Calendar Year 2013 vs 2012

	12/2013	12/2012	Percent Change	01/2013 - 12/2013	01/2012 - 12/2012	Percent Change
<u>Passenger Activity</u>						
Domestic Enplaned Revenue	424,442	389,042	9.10	4,861,821	4,587,969	5.97
Domestic Deplaned Revenue	409,161	375,101	9.08	4,870,154	4,588,062	6.15
International Enplaned Revenue	3,089	2,045	51.05	26,199	14,046	86.52
International Deplaned Revenue	2,977	1,853	60.66	28,660	14,431	98.60
Domestic Enplaned Non-Revenue	8,872	9,314	-4.75	122,474	117,610	4.14
Domestic Deplaned Non-Revenue	8,350	9,008	-7.30	108,235	108,165	0.06
International Enplaned Non-Revenue	42	3	1,300.00	171	3	5,600.00
International Deplaned Non-Revenue	24	16	50.00	244	28	771.43
Passenger Totals	856,957	786,382	8.97	10,017,958	9,430,314	6.23

CURRENT PASSENGER RECORD = 922,615 RECORD SET = JULY 2013

Aircraft Operations

Air Carrier	8,543	8,315	2.74	101,901	97,995	3.99
Commuter & Air Taxi	1,491	1,279	16.58	17,343	15,996	8.42
Military	453	457	-0.88	6,069	6,352	-4.46
General Aviation						
Itinerant	3,359	3,622	-7.26	48,962	49,907	-1.89
Local	144	174	-17.24	2,372	1,998	18.72
Total G.A.	3,503	3,796	-7.72	51,334	51,905	-1.10
Total Operations	13,990	13,847	1.03	176,647	172,248	2.55

Austin-Bergstrom International Airport

Aviation Activity Report

Calendar Year 2013 vs 2012

	12/2013	12/2012	Percent Change	01/2013 - 12/2013	01/2012 - 12/2012	Percent Change
<u>Cargo Activity</u>						
Mail						
Domestic Enplaned Mail	182,436	114,198	59.75	1,440,787	1,028,969	40.02
Domestic Deplaned Mail	199,902	156,363	27.84	2,046,960	2,208,636	-7.32
International Enplaned Mail	0	0	0.00	0	0	0.00
International Deplaned Mail	0	0	0.00	2,404	0	0.00
Mail Totals	382,338	270,561	41.31	3,490,151	3,237,605	7.80
Cargo						
Domestic Enplaned Cargo	4,787,200	4,957,021	-3.43	61,821,801	62,642,798	-1.31
Domestic Deplaned Cargo	6,954,663	6,143,937	13.20	72,018,931	68,256,855	5.51
International Enplaned Cargo	435,752	368,336	18.30	6,528,627	4,714,321	38.48
International Deplaned Cargo	369,221	279,941	31.89	6,217,253	5,552,008	11.98
Cargo Totals	12,546,836	11,749,235	6.79	146,586,612	141,165,982	3.84
Belly Freight						
Domestic Enplaned Belly Freight	237,517	330,938	-28.23	3,338,071	6,042,195	-44.75
Domestic Deplaned Belly Freight	421,600	384,300	9.71	5,138,368	5,172,003	-0.65
International Enplaned Belly Freight	0	0	0.00	0	0	0.00
International Deplaned Belly Freight	0	0	0.00	0	0	0.00
South Terminal-Intl Enplaned Belly Frt	0	0	0.00	0	0	0.00
South Terminal-Intl Deplaned Belly Frt	0	0	0.00	0	0	0.00
Belly Freight Totals	659,117	715,238	-7.85	8,476,439	11,214,198	-24.41
Cargo Totals (Mail, Cargo, Belly Freight)	13,588,291	12,735,034	6.70	158,553,202	155,617,785	1.89

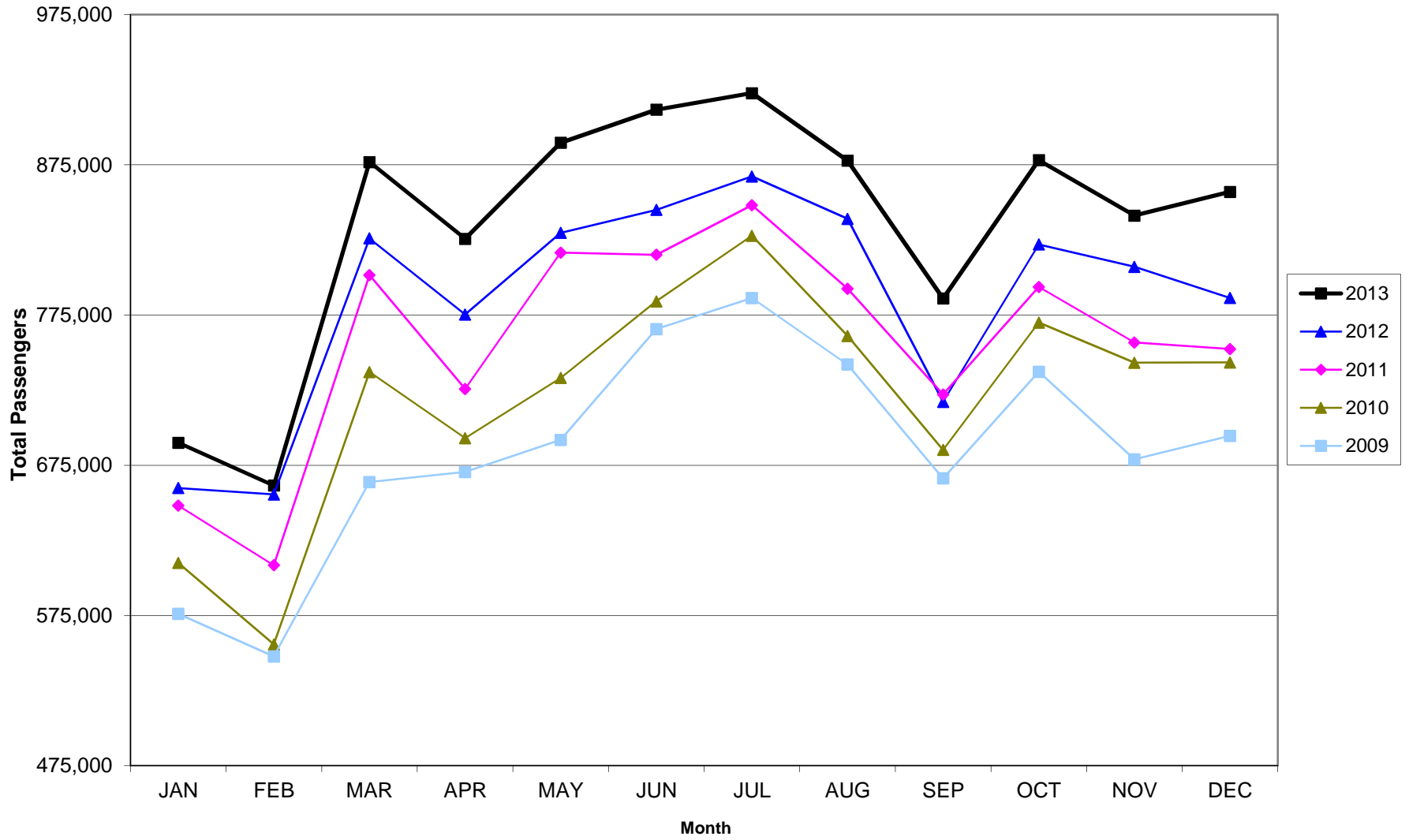
CURRENT CARGO RECORD = 40,215,518

RECORD SET = MARCH 2001

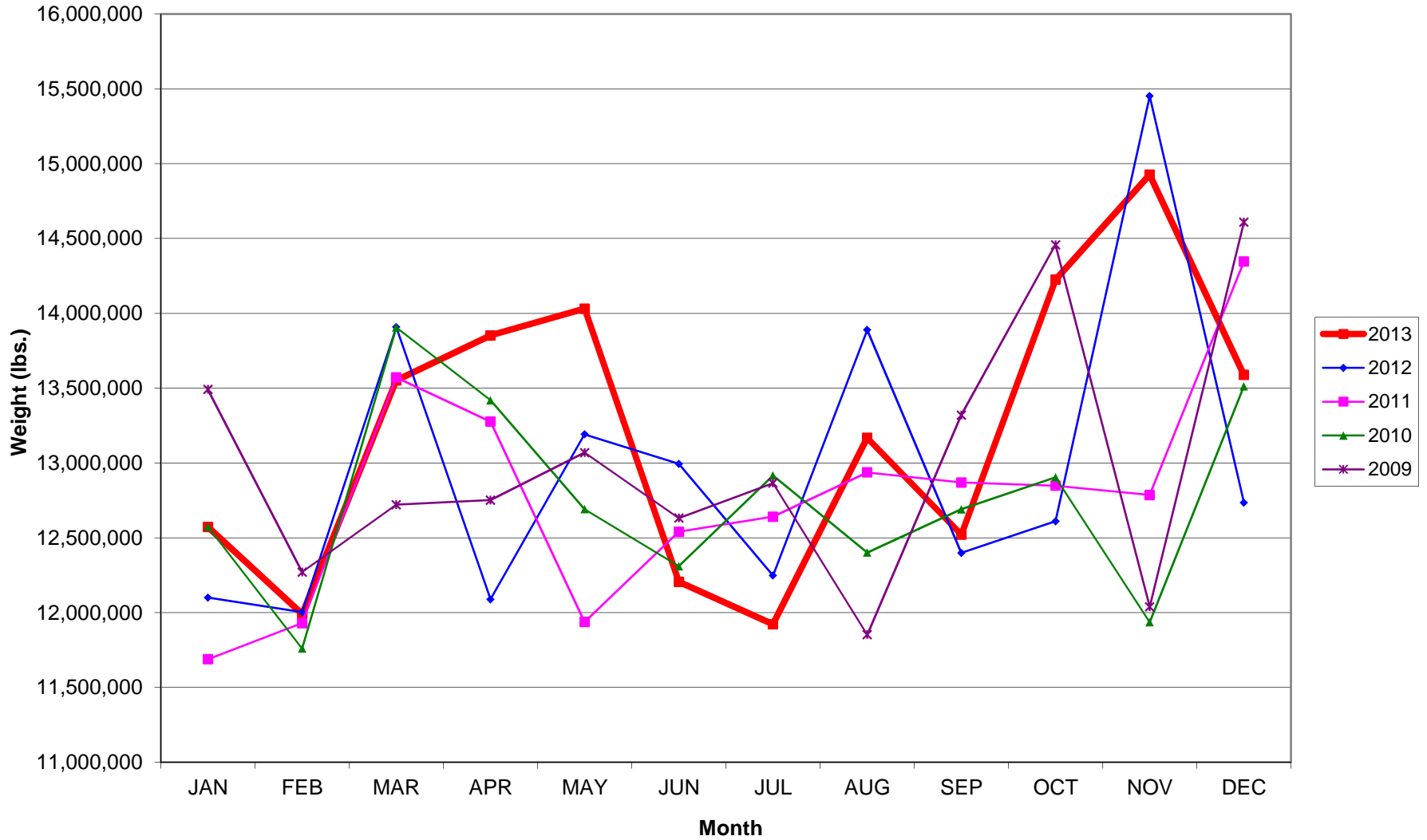
AUS – Airline Codes
December 2013

<u>Code</u>	<u>Carrier</u>
AS	Alaska Airlines, Inc.
G4	Allegiant Air, LLC
AA	American Airlines, Inc. Post-Petition (DIP)
DL	Delta Airlines
F9	Frontier Airlines
B6	JetBlue Airways Corp.
WN	Southwest Airlines.
VW	Transportes Aeromar S.A. de C.V.
UA	United Airlines, Inc.
US	US Airways Group, Inc.
VX	Virgin America Inc.

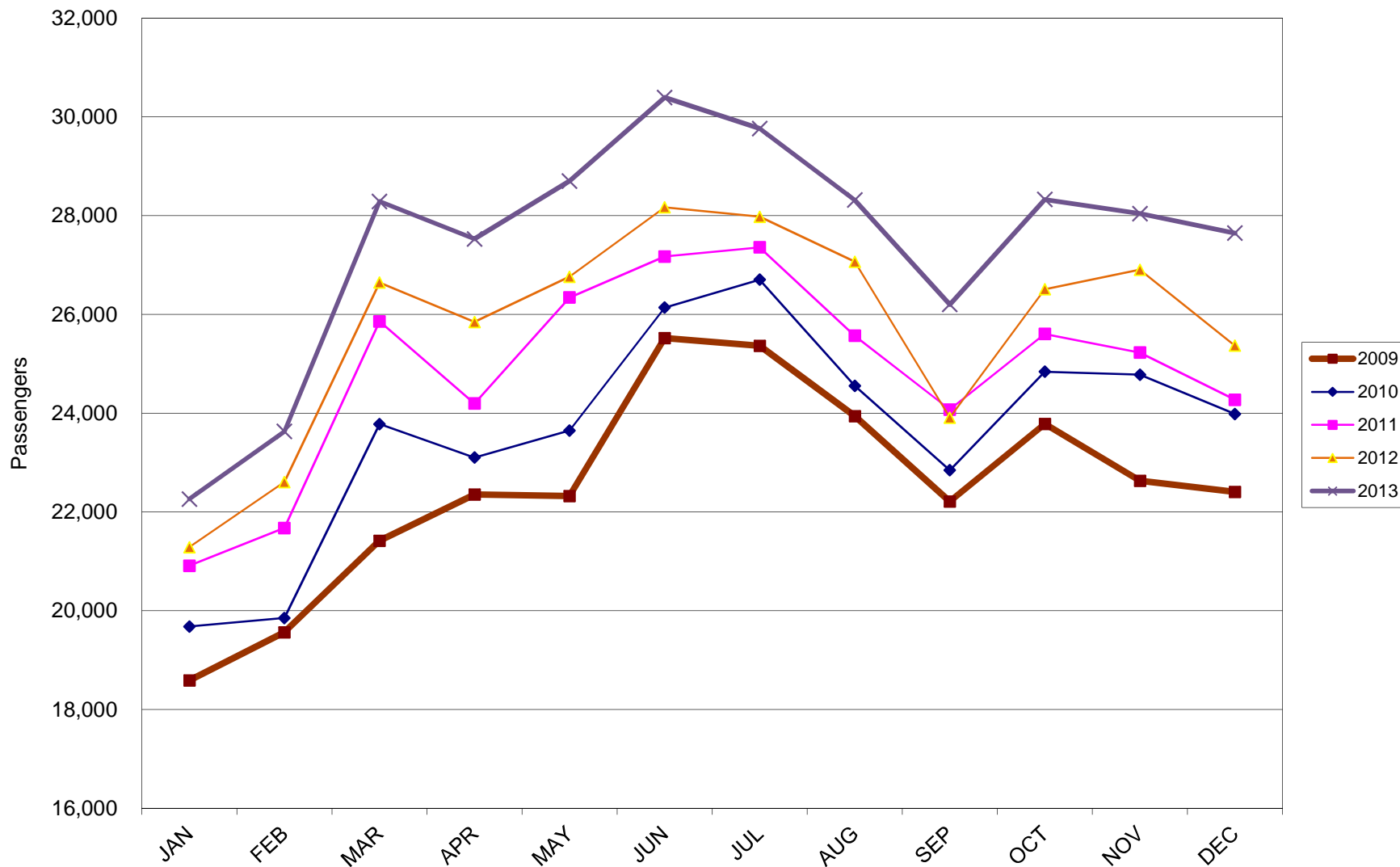
AUSTIN PASSENGER TRAFFIC 5 Year Trend



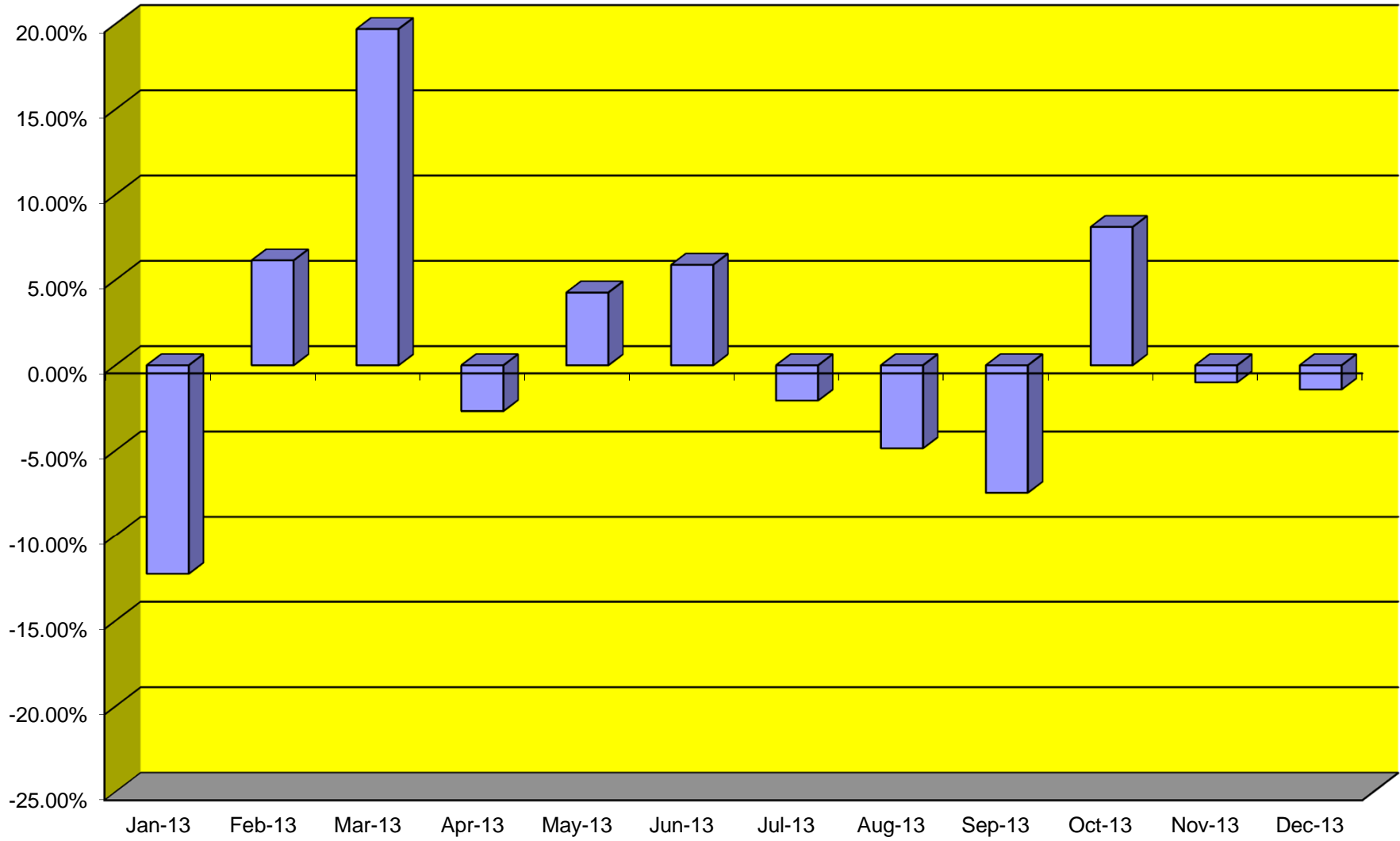
TOTAL CARGO POUNDAGE - AUSTIN, TEXAS



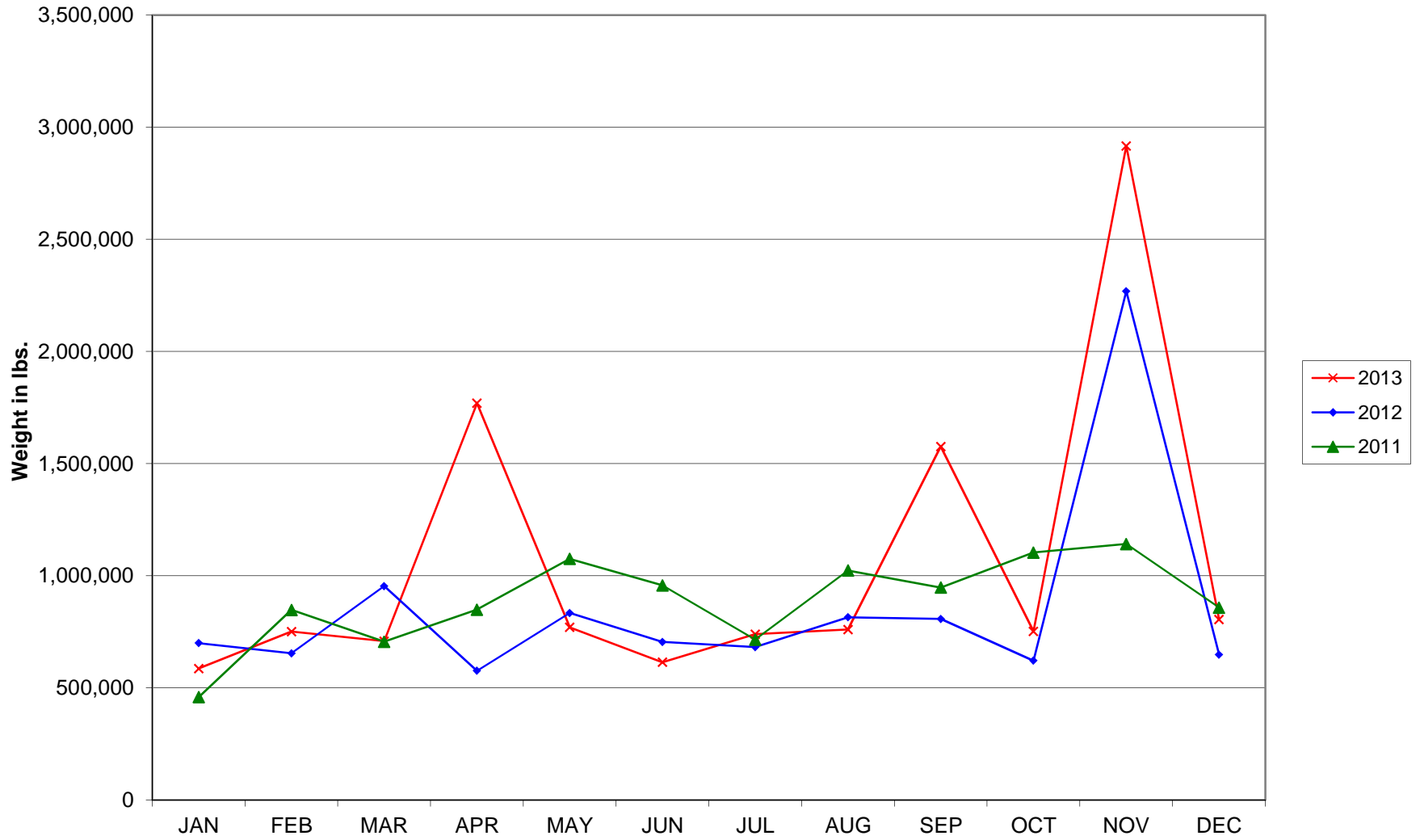
Average Daily Passengers



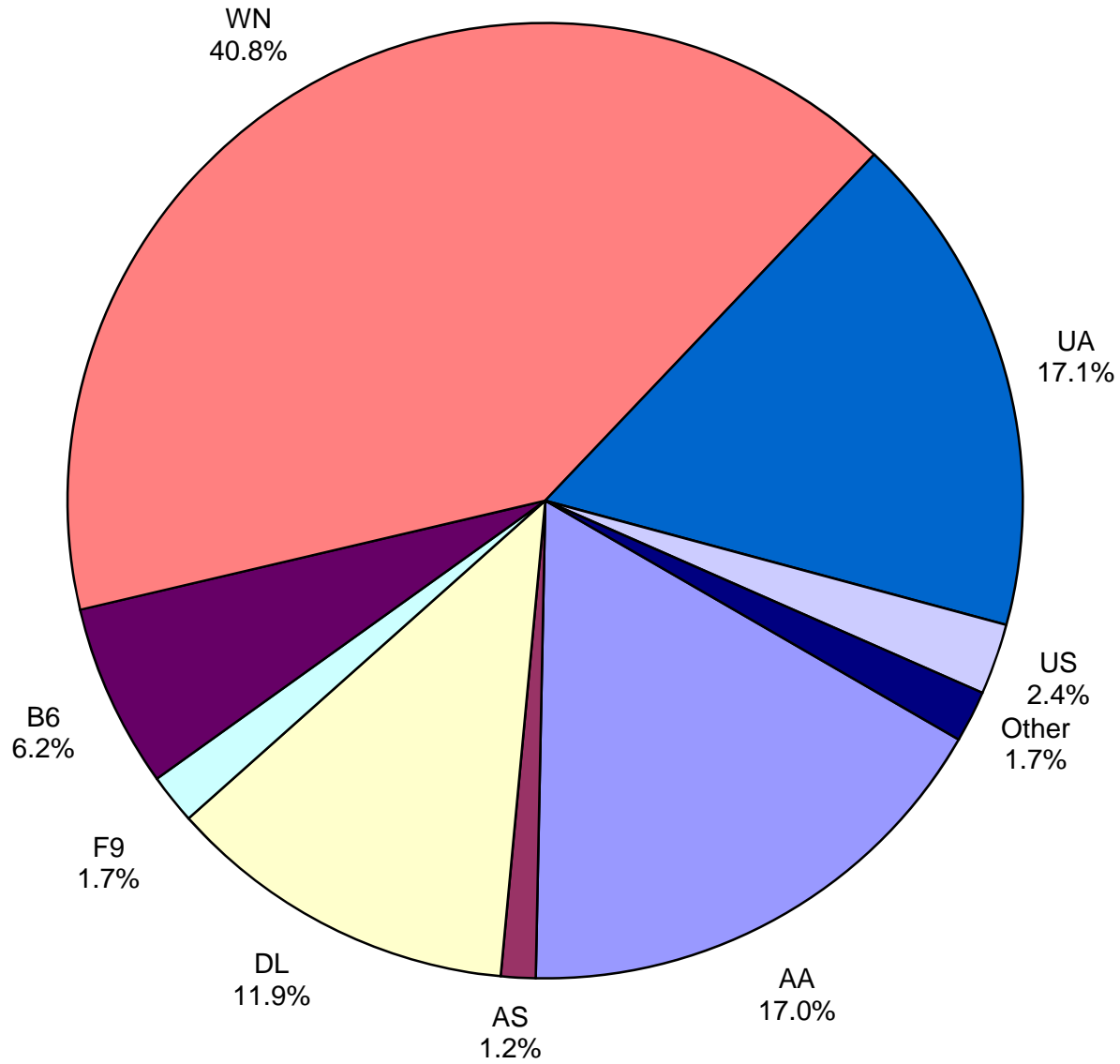
Monthly % Change in Average Daily Passengers



History of International Air Cargo



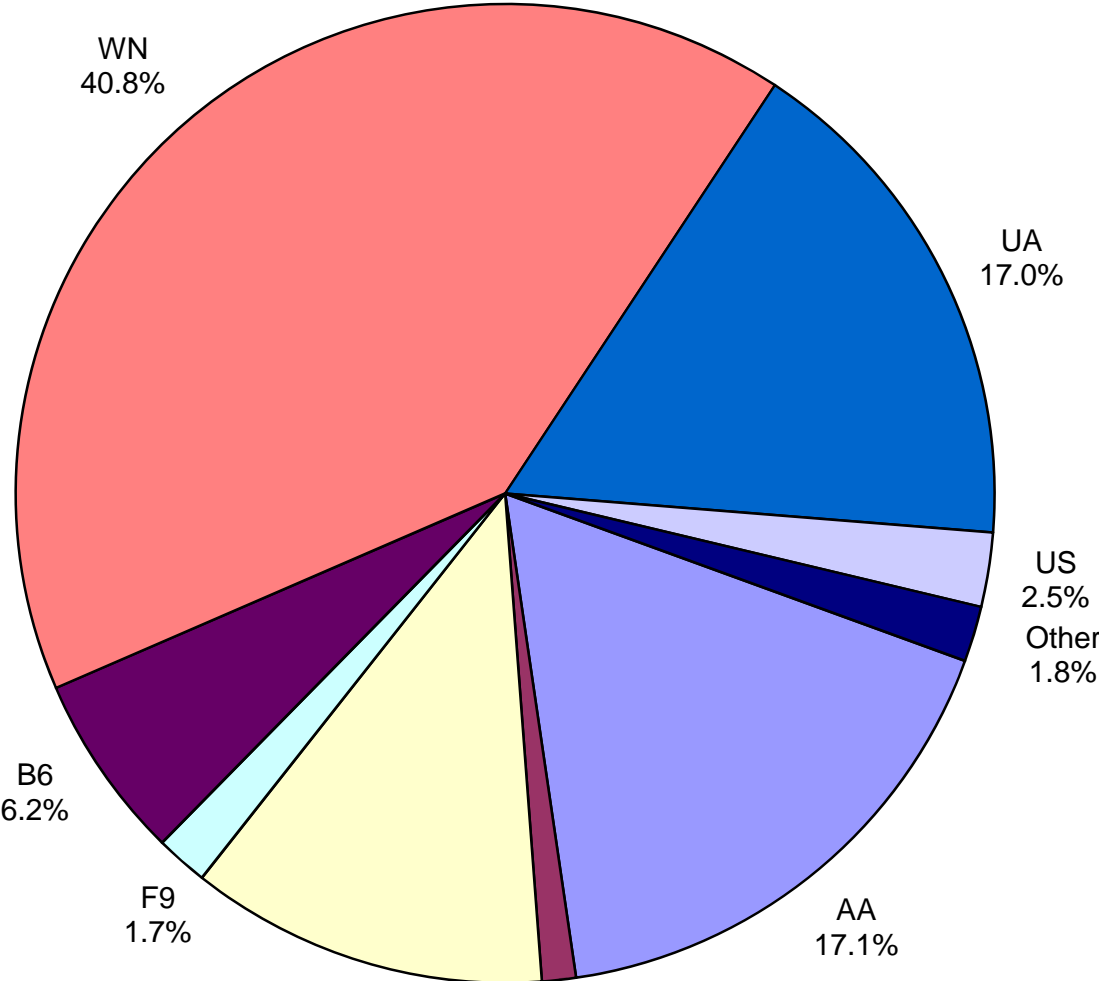
**Total Passengers
December 2013**



Other: Allegiant, Transportes Aeromar and Virgin America

Note: Delta, United Airlines and US Airways percentages includes Affiliates.

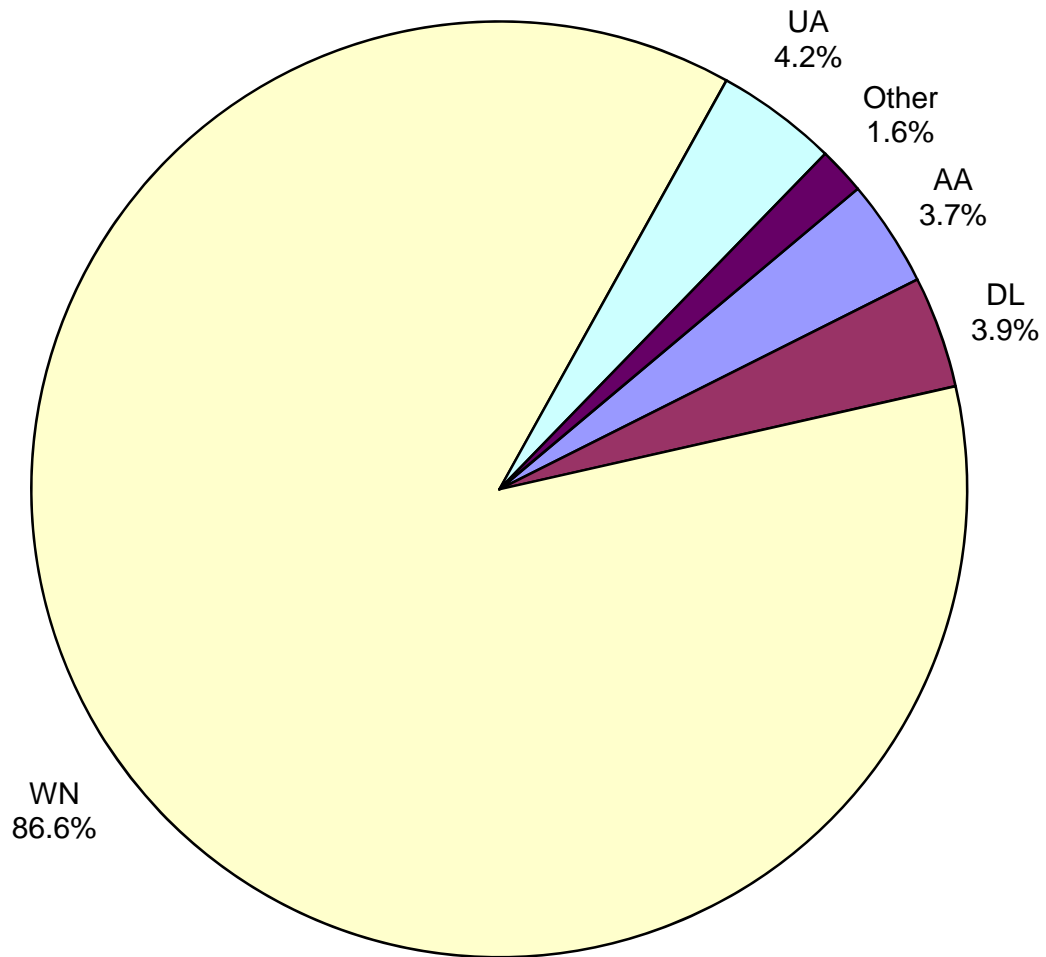
**All Passenger Carriers
Enplaned Revenue Passengers
December 2013**



Other: Allegiant Air, Transportes Aeromar and Virgin America

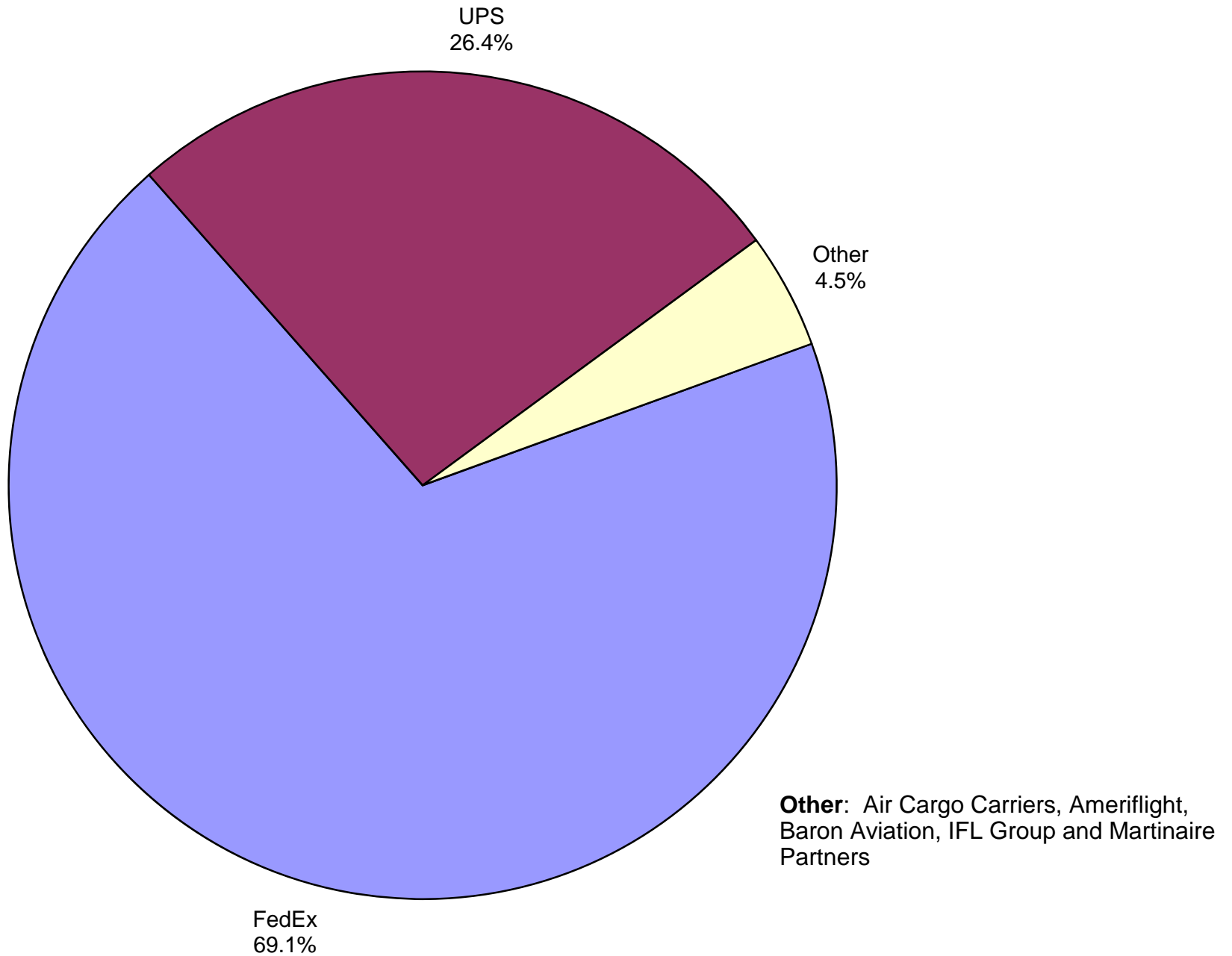
Note: Delta, United Airlines and US Airways percentages includes Affiliates.

**AUS Belly Freight Market Shares
December 2013**

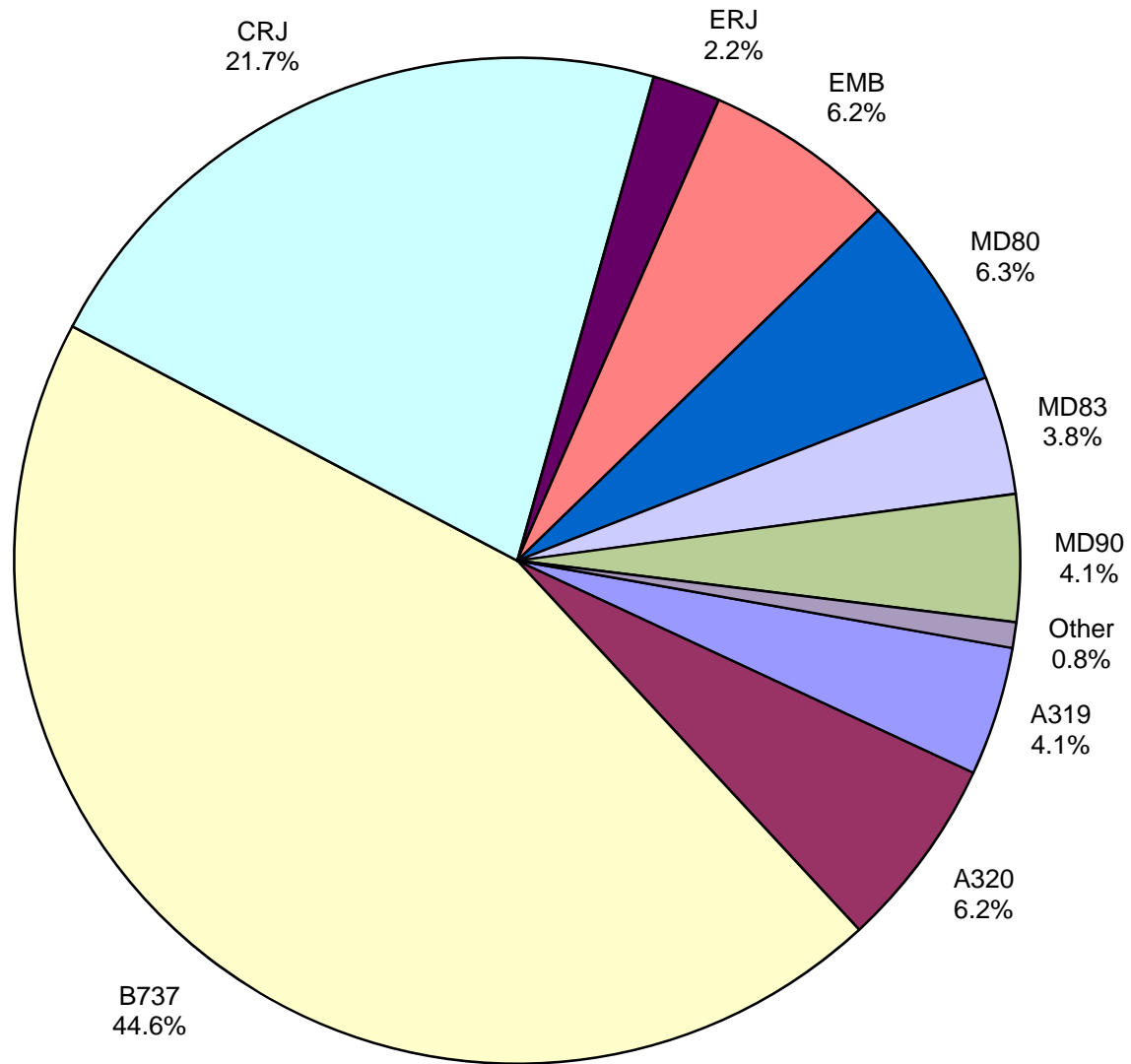


Other = Alaska Airlines, JetBlue and US Airways.

**Air Cargo Market Shares
December 2013**

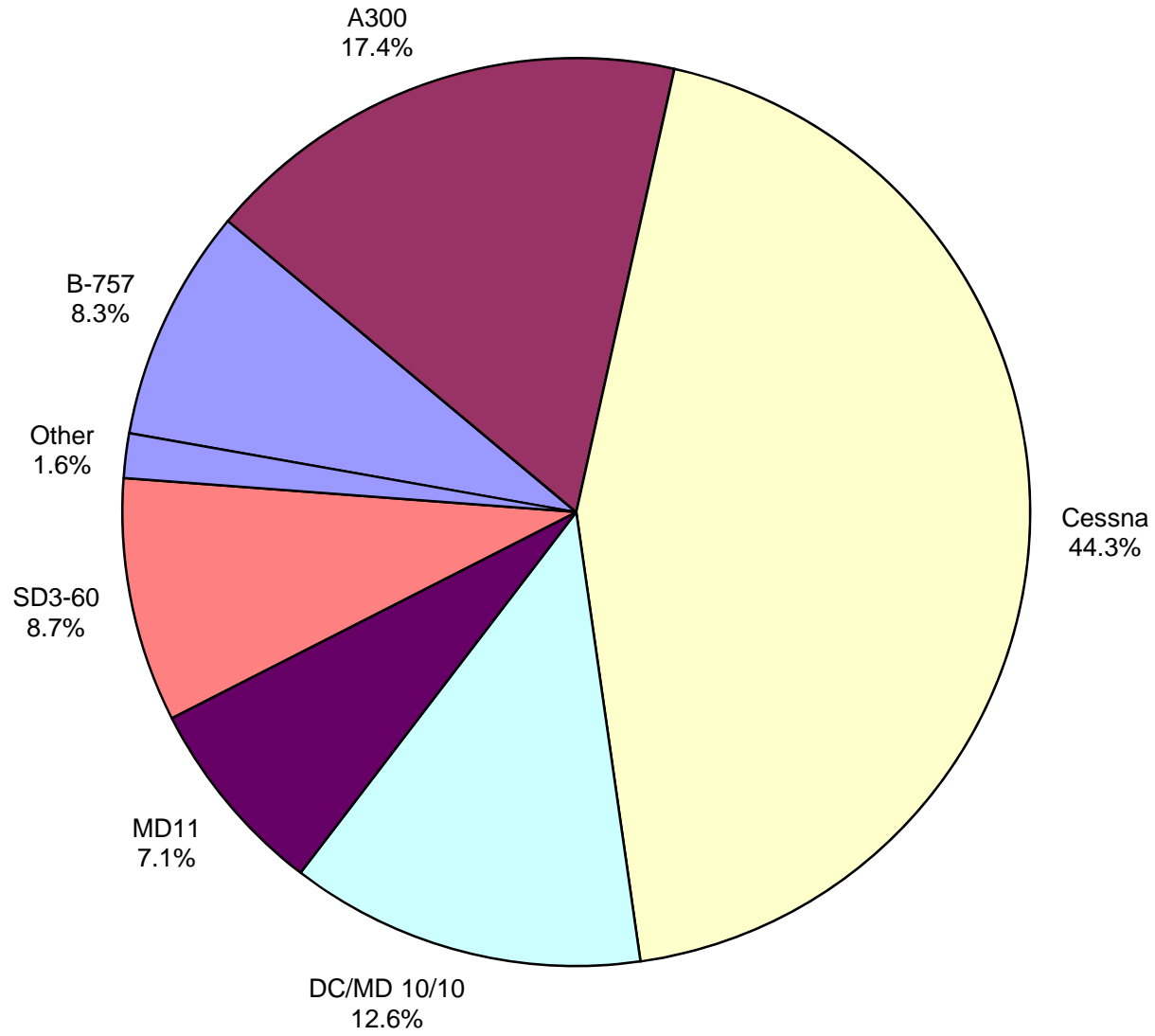


**AUS Scheduled Passenger Aircraft Fleet Mix
December 2013**



Other: B-717, B-757, B-767
and MD-88

**AUS Scheduled Cargo Aircraft Fleet Mix
December 2013**



Other: B-727, BE-99 and DC/MD-10/30

Austin-Bergstrom International Airport

PAX Detail Report - December, 2013

Period Company	12/2013	12/2012	YTD		YTD 2013	YTD 2012	2013		2012 Share	Share Share	Diff
			Difference	Change			Difference	Change			
AeroMexico Airlines/Aerovias de Mexico, S.A. de C.V.	0	0	0	0.0	638	882	-244	-27.7	0.0	0.0	0.0
Alaska Airlines, Inc.	10,027	9,593	434	4.5	115,184	113,416	1,768	1.6	1.1	1.2	-0.1
Allegiant Air Charter	0	434	-434	-100.0	1,520	2,874	-1,354	-47.1	0.0	0.0	0.0
Allegiant Air, LLC	6,152	0	6,152	0.0	11,643	0	11,643	0.0	0.1	0.0	0.1
American Airlines, Inc. - Post-Petition (DIP)	145,524	155,867	-10,343	-6.6	1,849,381	1,884,483	-35,102	-1.9	18.5	20.0	-1.5
Ameristarjet Charter Inc.	0	0	0	0.0	96	2	94	4,700.0	0.0	0.0	0.0
Continental Airlines	0	45,862	-45,862	-100.0	103,392	677,545	-574,153	-84.7	1.0	7.2	-6.2
Delta Air Lines	102,271	91,063	11,208	12.3	1,207,041	1,139,393	67,648	5.9	12.0	12.1	0.0
Express Jet Airlines, Inc.	0	3,719	-3,719	-100.0	46,979	38,420	8,559	22.3	0.5	0.4	0.1
Frontier Airlines, Inc.	14,512	18,858	-4,346	-23.0	163,967	206,834	-42,867	-20.7	1.6	2.2	-0.6
GoJet Airlines d/b/a United Express	0	16,575	-16,575	-100.0	139,517	152,123	-12,606	-8.3	1.4	1.6	-0.2
JetBlue Airways Corporation	53,304	44,698	8,606	19.3	641,426	575,884	65,542	11.4	6.4	6.1	0.3
Mesa Airlines Inc - DIP	0	32,697	-32,697	-100.0	288,544	386,463	-97,919	-25.3	2.9	4.1	-1.2
Miami Air International Inc.	0	0	0	0.0	1,018	678	340	50.1	0.0	0.0	0.0
North American Airlines/World Airways	0	0	0	0.0	192	0	192	0.0	0.0	0.0	0.0
Republic Airlines, Inc.	0	0	0	0.0	1,890	0	1,890	0.0	0.0	0.0	0.0
Shuttle America Corporation	0	2,241	-2,241	-100.0	85,595	46,437	39,158	84.3	0.9	0.5	0.4
SkyWest Airlines, Inc	0	38,344	-38,344	-100.0	346,353	395,455	-49,102	-12.4	3.5	4.2	-0.7
Southwest Airlines	349,340	304,761	44,579	14.6	3,906,335	3,580,730	325,605	9.1	39.0	38.0	1.0
Sun Country Airlines/ MN Airlines, LLC	0	0	0	0.0	1,096	554	542	97.8	0.0	0.0	0.0
Transportes Aeromar S.A. de C.V.	1,516	0	1,516	0.0	2,664	0	2,664	0.0	0.0	0.0	0.0
United Airlines, Inc.	146,413	14,888	131,525	883.4	855,388	195,327	660,061	337.9	8.5	2.1	6.5
US Airways Group, Inc.	20,624	6,573	14,051	213.8	194,411	31,091	163,320	525.3	1.9	0.3	1.6
US Marshall Service / JPATS	0	0	0	0.0	0	1	-1	-100.0	0.0	0.0	0.0
Virgin America Inc.	7,274	0	7,274	0.0	52,084	0	52,084	0.0	0.5	0.0	0.5
Vision Airlines, Inc.	0	209	-209	-100.0	1,440	1,722	-282	-16.4	0.0	0.0	0.0
World Atlantic Airlines	0	0	0	0.0	164	0	164	0.0	0.0	0.0	0.0
Report Totals	856,957	786,382	70,575	9.0%	10,017,958	9,430,314	587,644	6.2%			

Statistics Included in Report:

Domestic Passengers: Enplaned Revenue, Deplaned Revenue, Enplaned Non-Revenue, Deplaned Non-Revenue
 International Passengers: Enplaned Revenue, Deplaned Revenue, Enplaned Non-Revenue, Deplaned Non-Revenue

Austin-Bergstrom International Airport

Summary Landing Report

Landing Type: Total

Month	2013		2012		2011		% Change 2013 - 2012		% Change 2012 - 2011	
	Count	Weight	Count	Weight	Count	Weight	Count	Weight	Count	Weight
January	4,176	469,844,487	4,033	441,029,354	4,214	463,934,037	3.55%	6.53%	-4.30%	-4.94%
February	3,824	428,117,442	3,892	432,535,353	3,776	417,430,253	-1.75%	-1.02%	3.07%	3.62%
March	4,660	536,989,561	4,372	496,635,886	4,539	498,238,970	6.59%	8.13%	-3.68%	-0.32%
April	4,425	504,739,959	4,260	479,535,174	4,274	479,035,366	3.87%	5.26%	-0.33%	0.10%
May	4,687	545,881,910	4,385	509,470,460	4,564	500,806,412	6.89%	7.15%	-3.92%	1.73%
June	4,680	534,286,437	4,425	503,932,220	4,378	490,983,485	5.76%	6.02%	1.07%	2.64%
July	4,788	547,957,989	4,586	524,142,423	4,499	504,634,624	4.40%	4.54%	1.93%	3.87%
August	4,737	541,522,098	4,532	519,056,485	4,415	499,285,697	4.52%	4.33%	2.65%	3.96%
September	4,320	497,853,836	4,181	484,324,879	4,226	477,495,780	3.32%	2.79%	-1.06%	1.43%
October	4,613	540,694,783	4,424	512,451,397	4,309	490,427,499	4.27%	5.51%	2.67%	4.49%
November	4,448	517,542,366	4,283	504,246,217	4,078	460,449,178	3.85%	2.64%	5.03%	9.51%
December	4,534	521,172,463	4,391	498,622,124	4,234	473,997,984	3.26%	4.52%	3.71%	5.19%
Totals for Selected Period	53,892	6,186,603,331	51,764	5,905,981,972	51,506	5,756,719,285	4.11%	4.75%	0.50%	2.59%
Yearly Totals	53,892	6,186,603,331	51,764	5,905,981,972	51,506	5,756,719,285			0.50%	2.59%