

Austin-Bergstrom International Airport

Aviation Activity Report

Calendar Year 2013 vs 2012

| | 09/2013 | 09/2012 | Percent Change | 01/2013 - 09/2013 | 01/2012 - 09/2012 | Percent Change |
|------------------------------------|---------|---------|----------------|-------------------|-------------------|----------------|
| <u>Passenger Activity</u> | | | | | | |
| Domestic Enplaned Revenue | 380,599 | 348,692 | 9.15 | 3,602,480 | 3,408,691 | 5.69 |
| Domestic Deplaned Revenue | 386,029 | 349,176 | 10.55 | 3,621,651 | 3,416,907 | 5.99 |
| International Enplaned Revenue | 1,127 | 653 | 72.59 | 18,896 | 8,722 | 116.65 |
| International Deplaned Revenue | 1,616 | 1,036 | 55.98 | 21,614 | 9,496 | 127.61 |
| Domestic Enplaned Non-Revenue | 8,722 | 9,097 | -4.12 | 94,372 | 89,076 | 5.95 |
| Domestic Deplaned Non-Revenue | 7,866 | 8,558 | -8.09 | 82,534 | 81,952 | 0.71 |
| International Enplaned Non-Revenue | 0 | 0 | 0.00 | 92 | 0 | 0.00 |
| International Deplaned Non-Revenue | 24 | 0 | 0.00 | 161 | 12 | 1,241.67 |
| Passenger Totals | 785,983 | 717,212 | 9.59 | 7,441,800 | 7,014,856 | 6.09 |

CURRENT PASSENGER RECORD = 922,615 RECORD SET = JULY 2013

Aircraft Operations

| | | | | | | |
|---------------------|--------|--------|--------|---------|---------|-------|
| Air Carrier | 8,167 | 7,980 | 2.34 | 76,167 | 73,156 | 4.12 |
| Commuter & Air Taxi | 1,405 | 1,177 | 19.37 | 12,552 | 11,569 | 8.50 |
| Military | 478 | 626 | -23.64 | 4,779 | 4,433 | 7.81 |
| General Aviation | | | | | | |
| Itinerant | 4,163 | 3,938 | 5.71 | 36,862 | 36,581 | 0.77 |
| Local | 206 | 172 | 19.77 | 1,956 | 1,560 | 25.38 |
| Total G.A. | 4,369 | 4,110 | 6.30 | 38,818 | 38,141 | 1.77 |
| Total Operations | 14,419 | 13,893 | 3.79 | 132,316 | 127,299 | 3.94 |

Austin-Bergstrom International Airport

Aviation Activity Report

Calendar Year 2013 vs 2012

| | 09/2013 | 09/2012 | Percent Change | 01/2013 - 09/2013 | 01/2012 - 09/2012 | Percent Change |
|---|------------|------------|-------------------|----------------------|----------------------|-------------------|
| <u>Cargo Activity</u> | | | | | | |
| Mail | | | | | | |
| Domestic Enplaned Mail | 99,998 | 93,352 | 7.12 | 972,232 | 742,470 | 30.95 |
| Domestic Deplaned Mail | 156,831 | 214,459 | -26.87 | 1,448,701 | 1,581,761 | -8.41 |
| International Enplaned Mail | 0 | 0 | 0.00 | 0 | 0 | 0.00 |
| International Deplaned Mail | 0 | 0 | 0.00 | 2,404 | 0 | 0.00 |
| Mail Totals | 256,829 | 307,811 | -16.56 | 2,423,337 | 2,324,231 | 4.26 |
| Cargo | | | | | | |
| Domestic Enplaned Cargo | 4,471,065 | 5,013,571 | -10.82 | 45,981,712 | 46,219,554 | -0.51 |
| Domestic Deplaned Cargo | 5,579,463 | 5,416,251 | 3.01 | 52,715,293 | 50,490,920 | 4.41 |
| International Enplaned Cargo | 413,089 | 426,211 | -3.08 | 4,191,451 | 3,478,951 | 20.48 |
| International Deplaned Cargo | 1,162,741 | 381,276 | 204.96 | 4,080,940 | 3,249,423 | 25.59 |
| Cargo Totals | 11,626,358 | 11,237,309 | 3.46 | 106,969,396 | 103,438,848 | 3.41 |
| Belly Freight | | | | | | |
| Domestic Enplaned Belly Freight | 230,385 | 512,582 | -55.05 | 2,603,590 | 5,024,058 | -48.18 |
| Domestic Deplaned Belly Freight | 407,252 | 341,168 | 19.37 | 3,817,088 | 4,033,748 | -5.37 |
| International Enplaned Belly Freight | 0 | 0 | 0.00 | 0 | 0 | 0.00 |
| International Deplaned Belly Freight | 0 | 0 | 0.00 | 0 | 0 | 0.00 |
| Belly Freight Totals | 637,637 | 853,750 | -25.31 | 6,420,678 | 9,057,806 | -29.11 |
| Cargo Totals (Mail, Cargo, Belly Freight) | 12,520,824 | 12,398,870 | 0.98 | 115,813,411 | 114,820,885 | 0.86 |

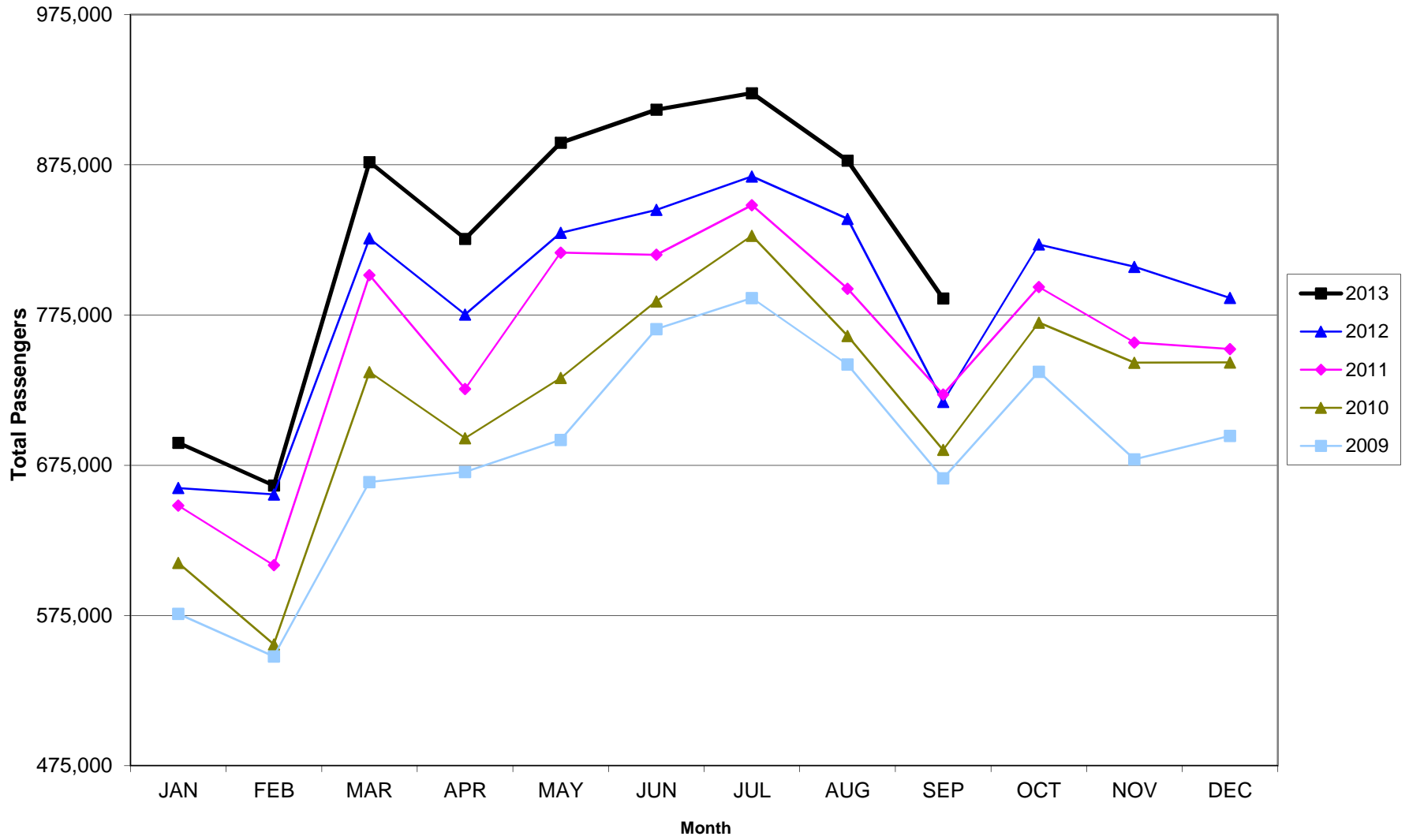
CURRENT CARGO RECORD = 40,215,518

RECORD SET = MARCH 2001

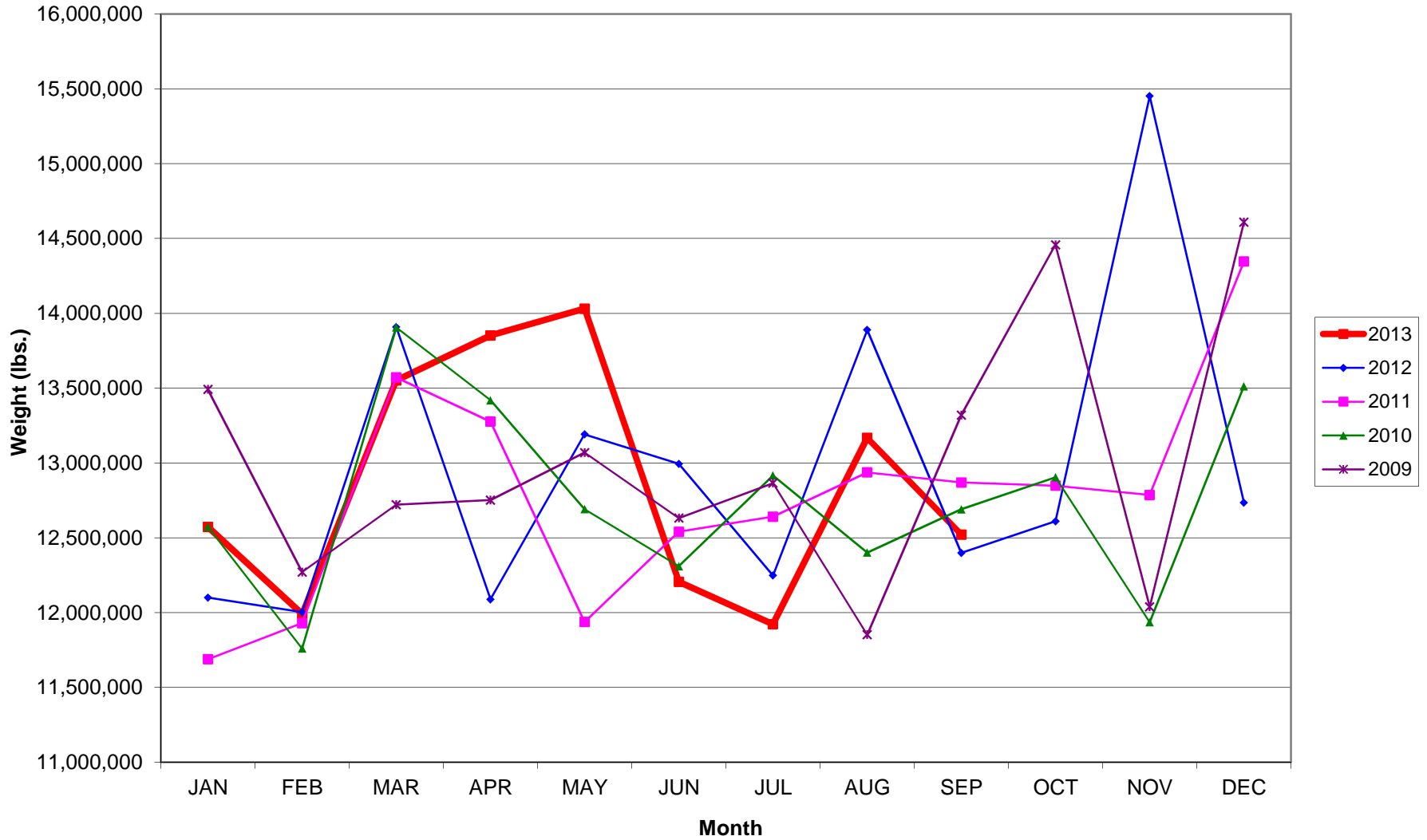
AUS – Airline Codes
September 2013

| <u>Code</u> | <u>Carrier</u> |
|--------------------|---|
| AS | Alaska Airlines, Inc. |
| AA | American Airlines, Inc. Post-Petition (DIP) (Includes American Eagle) |
| DL | Delta Airlines |
| XE | Express Jet Airlines, Inc. (UA Express) |
| F9 | Frontier Airlines |
| G7 | GoJet Airlines dba United Express |
| B6 | JetBlue Airways Corp. |
| YV | Mesa Airlines Inc – DIP (US Airways & UA Express) |
| RW | Republic Airlines, Inc. |
| S5 | Shuttle America Corp. (UA Express) |
| OO | Sky West Airlines, Inc. (UA Express) |
| WN | Southwest Airlines |
| UA | United Airlines, Inc. |
| US | US Airways Group, Inc. |
| VX | Virgin America Inc. |

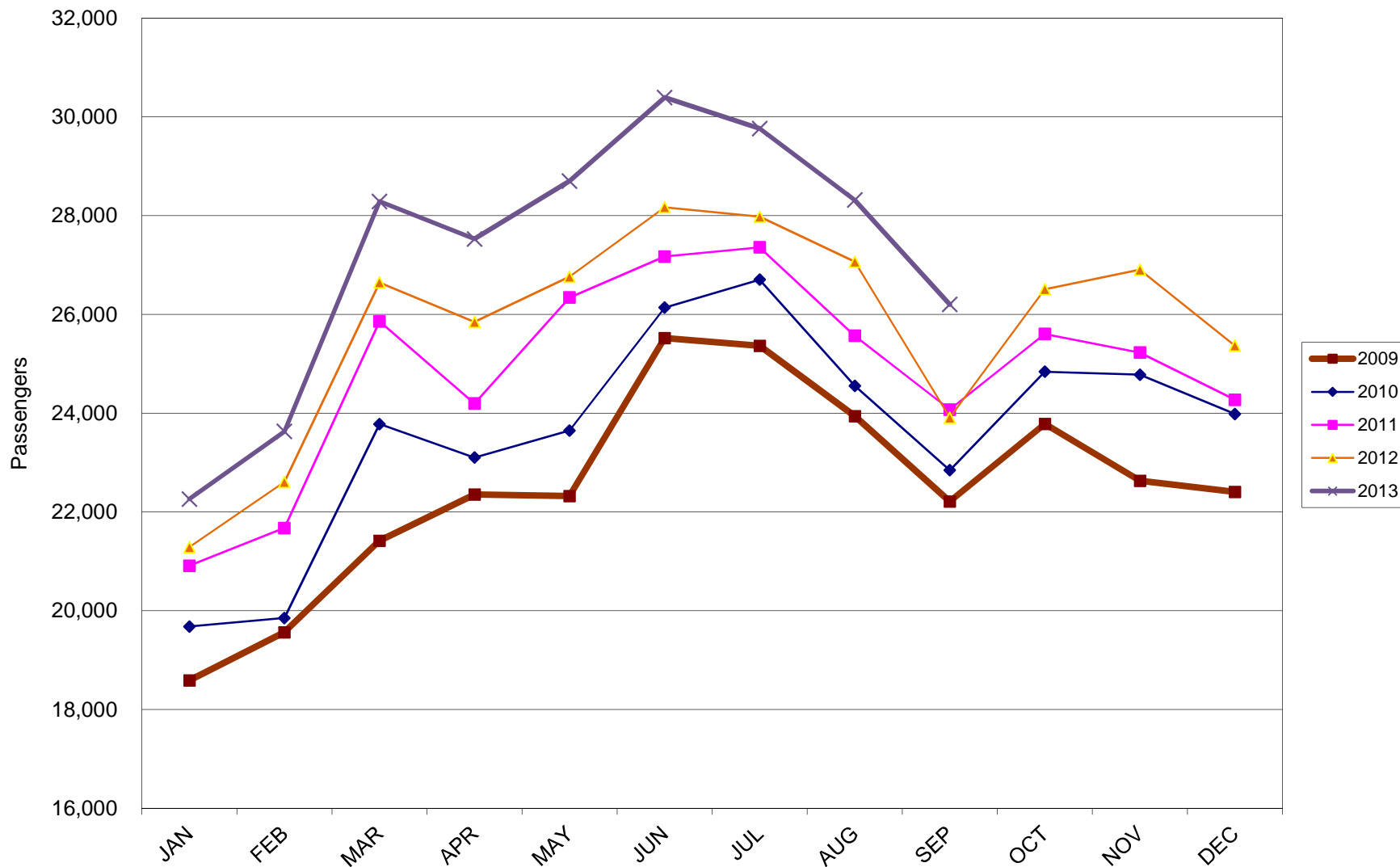
AUSTIN PASSENGER TRAFFIC 5 Year Trend



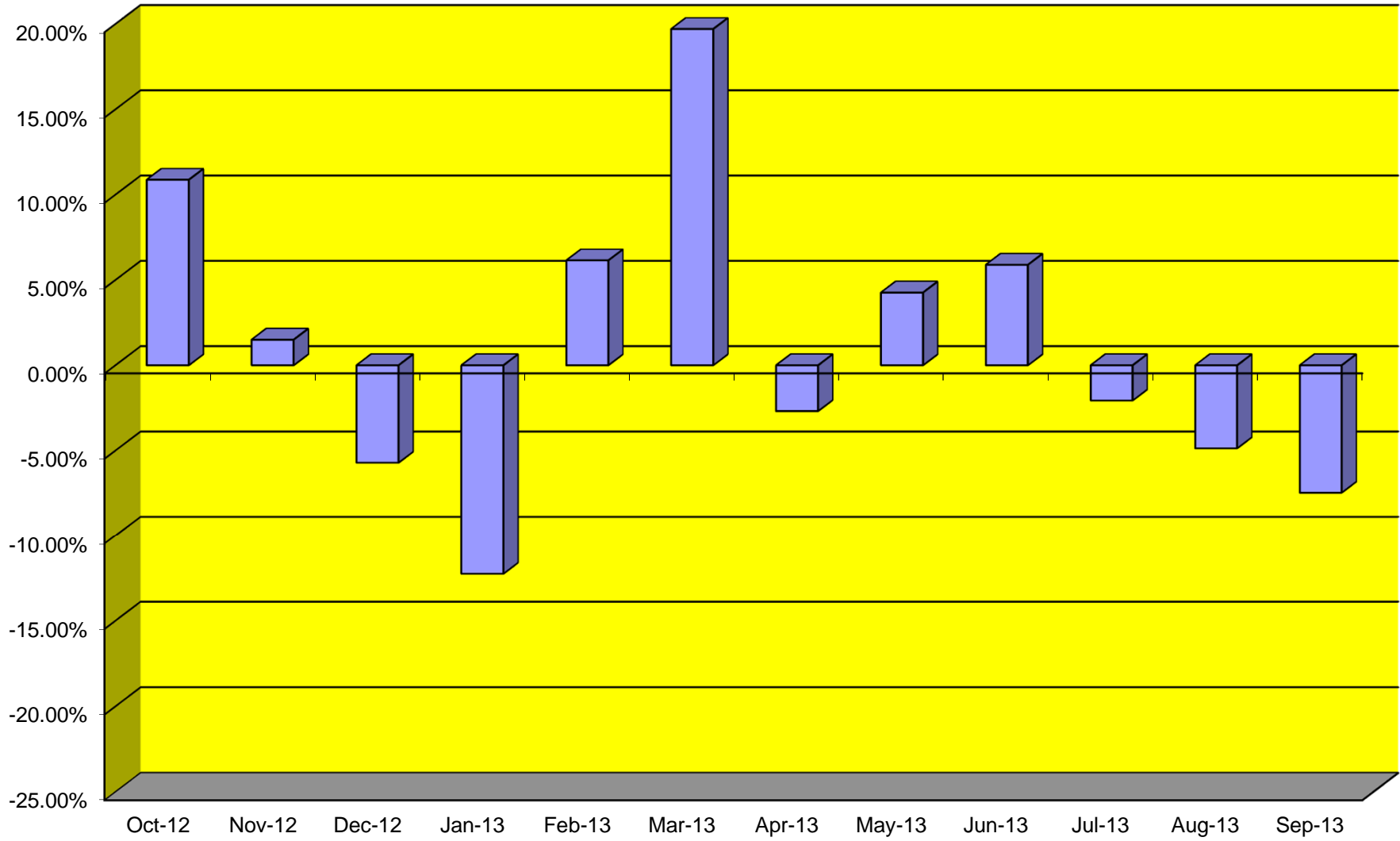
TOTAL CARGO POUNDAGE - AUSTIN, TEXAS



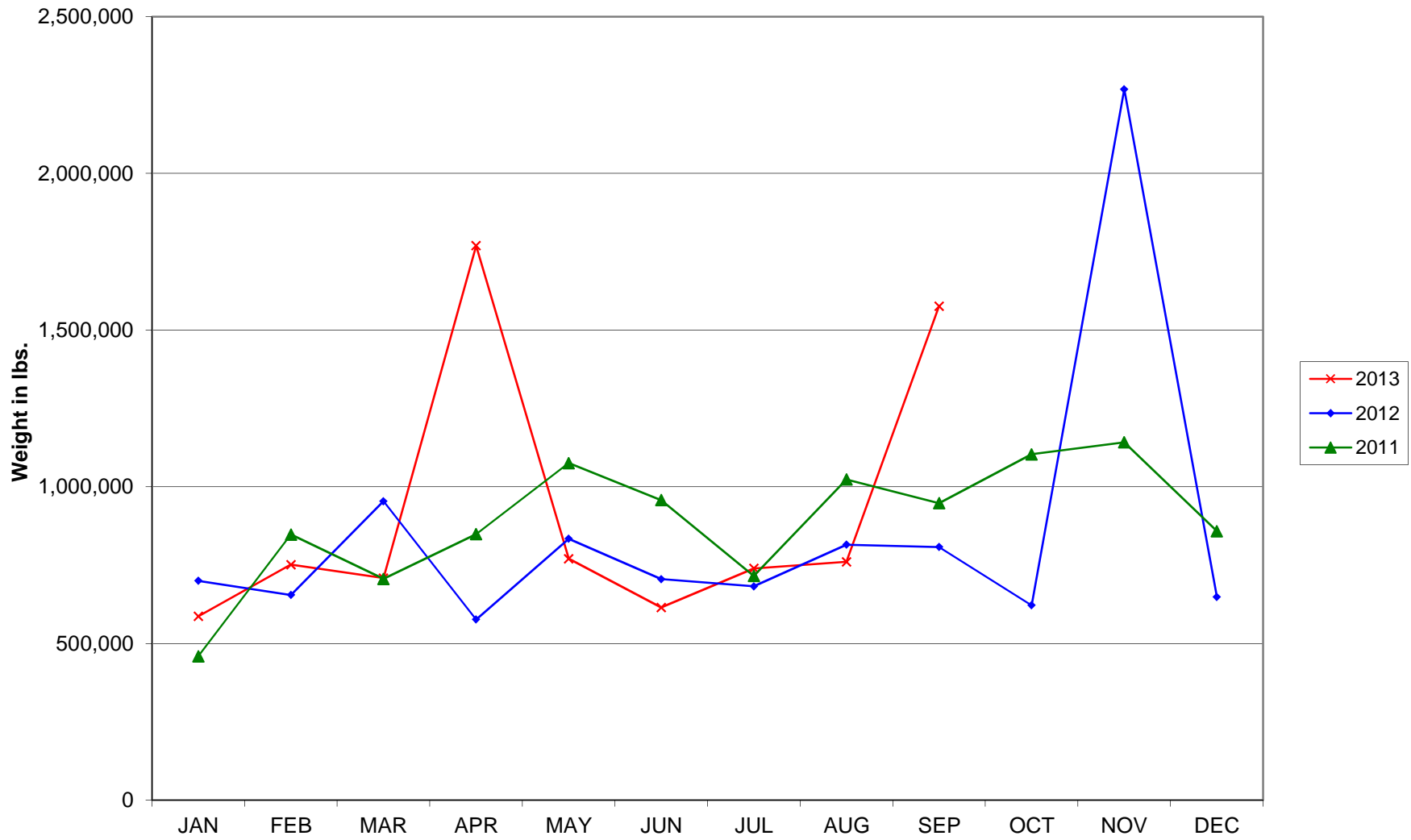
Average Daily Passengers



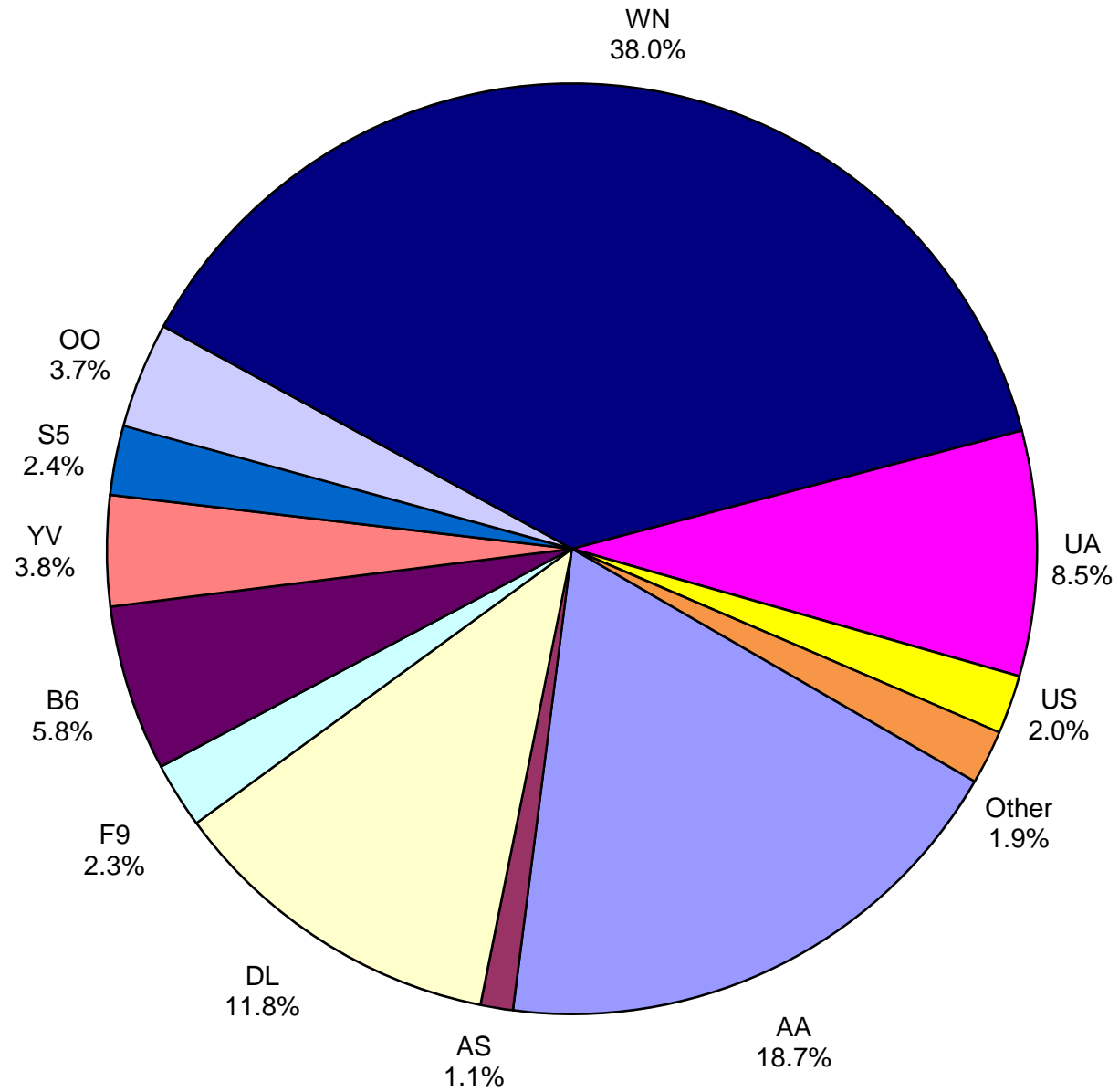
Monthly % Change in Average Daily Passengers



History of International Air Cargo



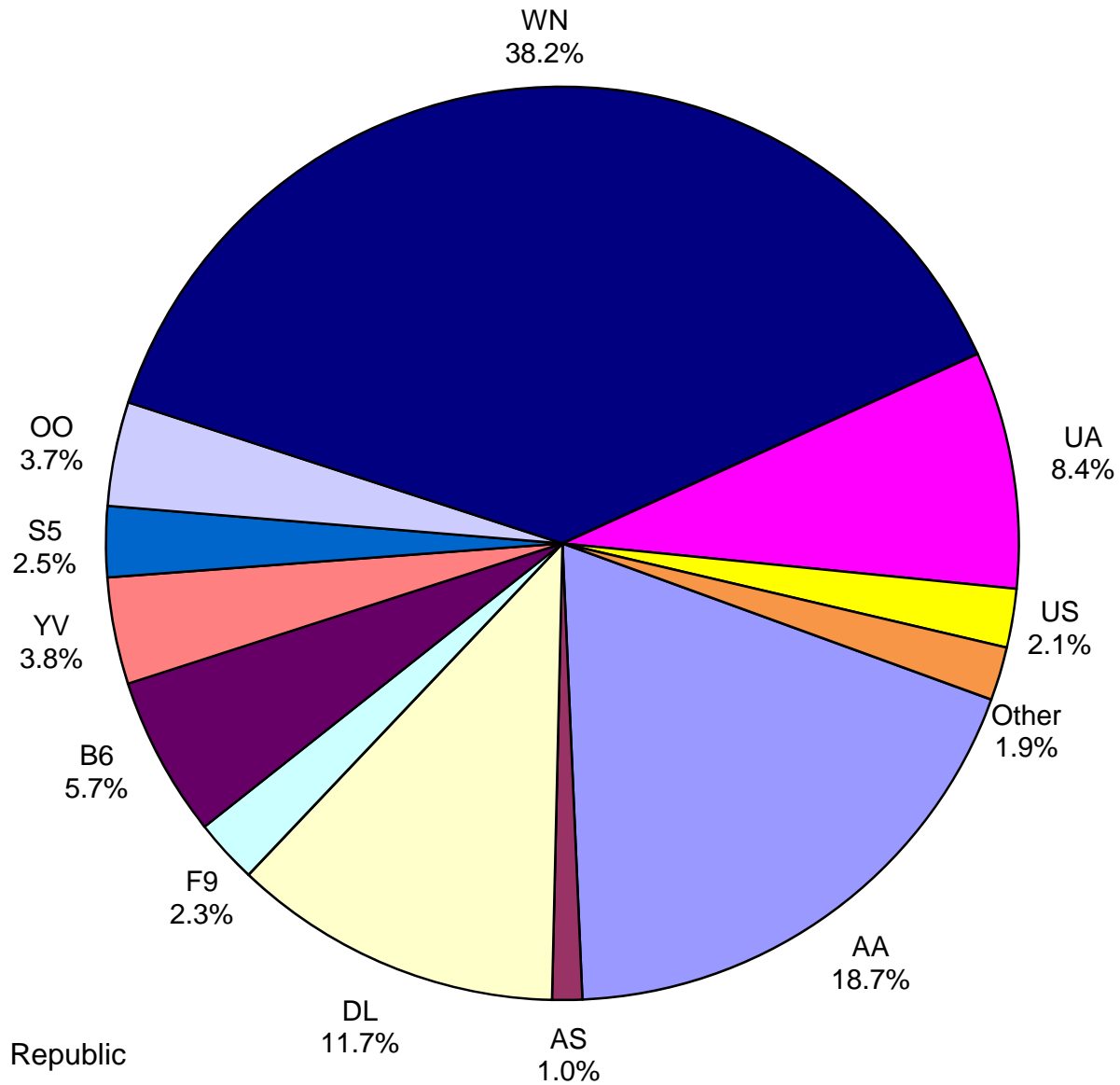
Total Passengers September 2013



Other: Republic Airlines, Virgin America, ExpressJet Airlines.

Note: United Airlines percentage includes sub-contractors.

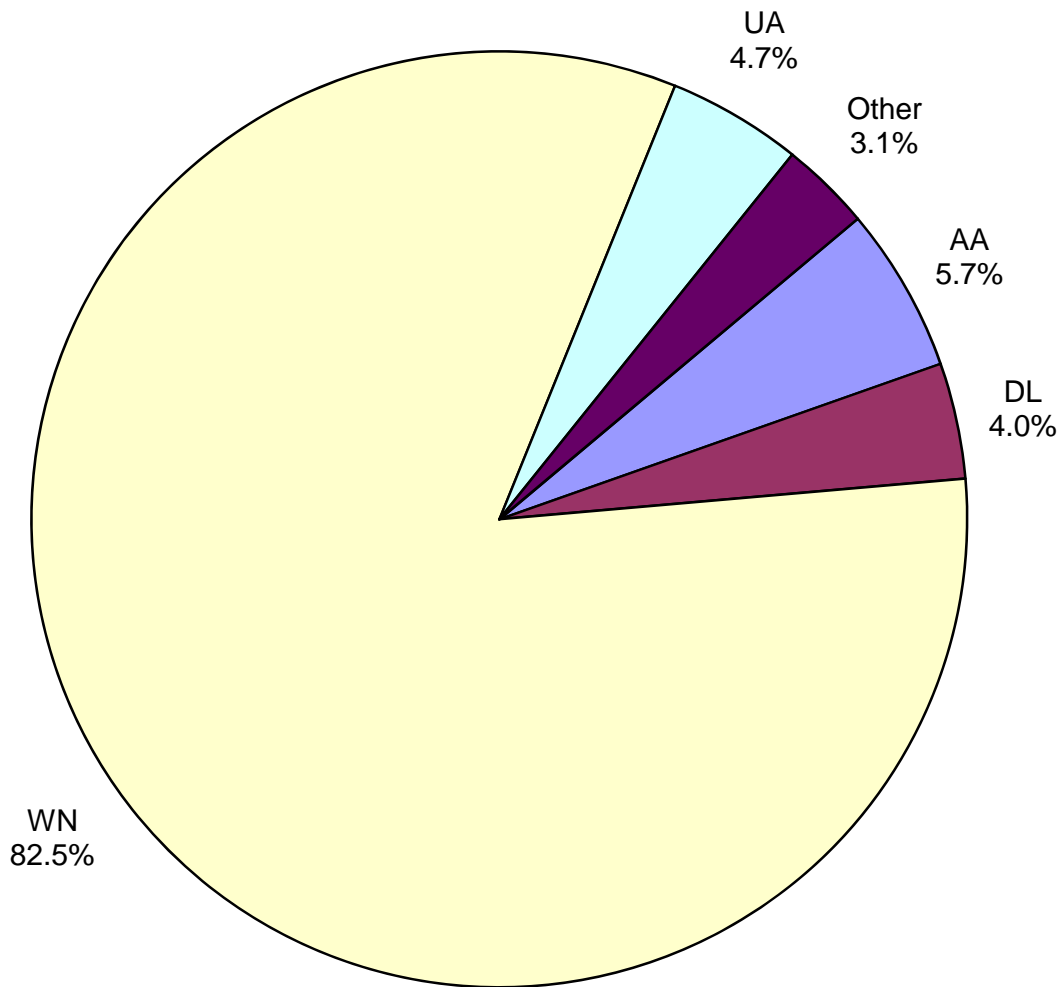
**All Passenger Carriers
Enplaned Revenue Passengers
September 2013**



Other = ExpressJet Airlines, Republic Airlines and Virgin America.

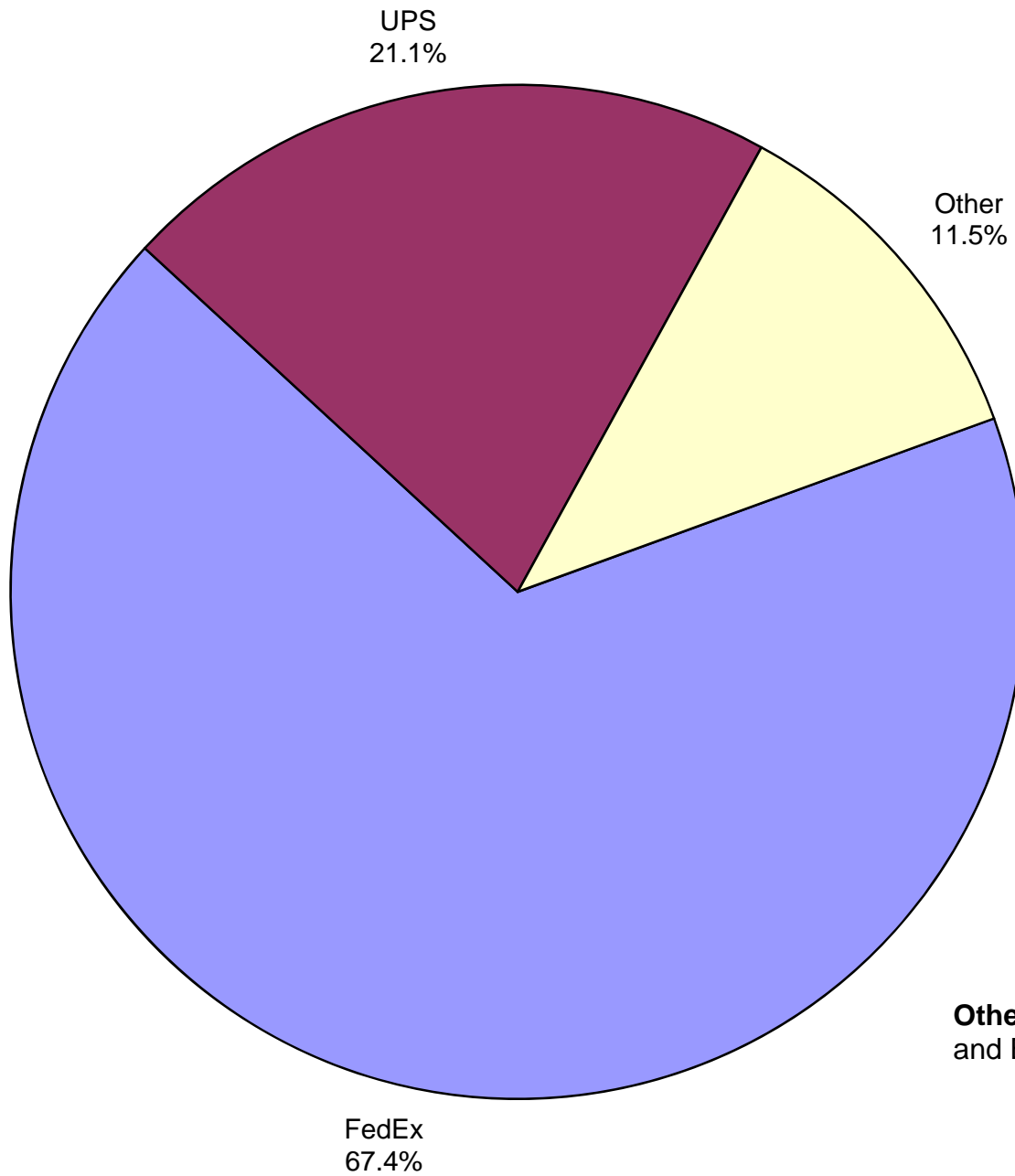
Note: United Airlines percentage includes sub-contractors.

**AUS Belly Freight Market Shares
September 2013**



Other = Alaska Airlines, Frontier Airlines, JetBlue, Mesa Airlines Inc (DIP) and US Airways.

**Air Cargo Market Shares
September 2013**



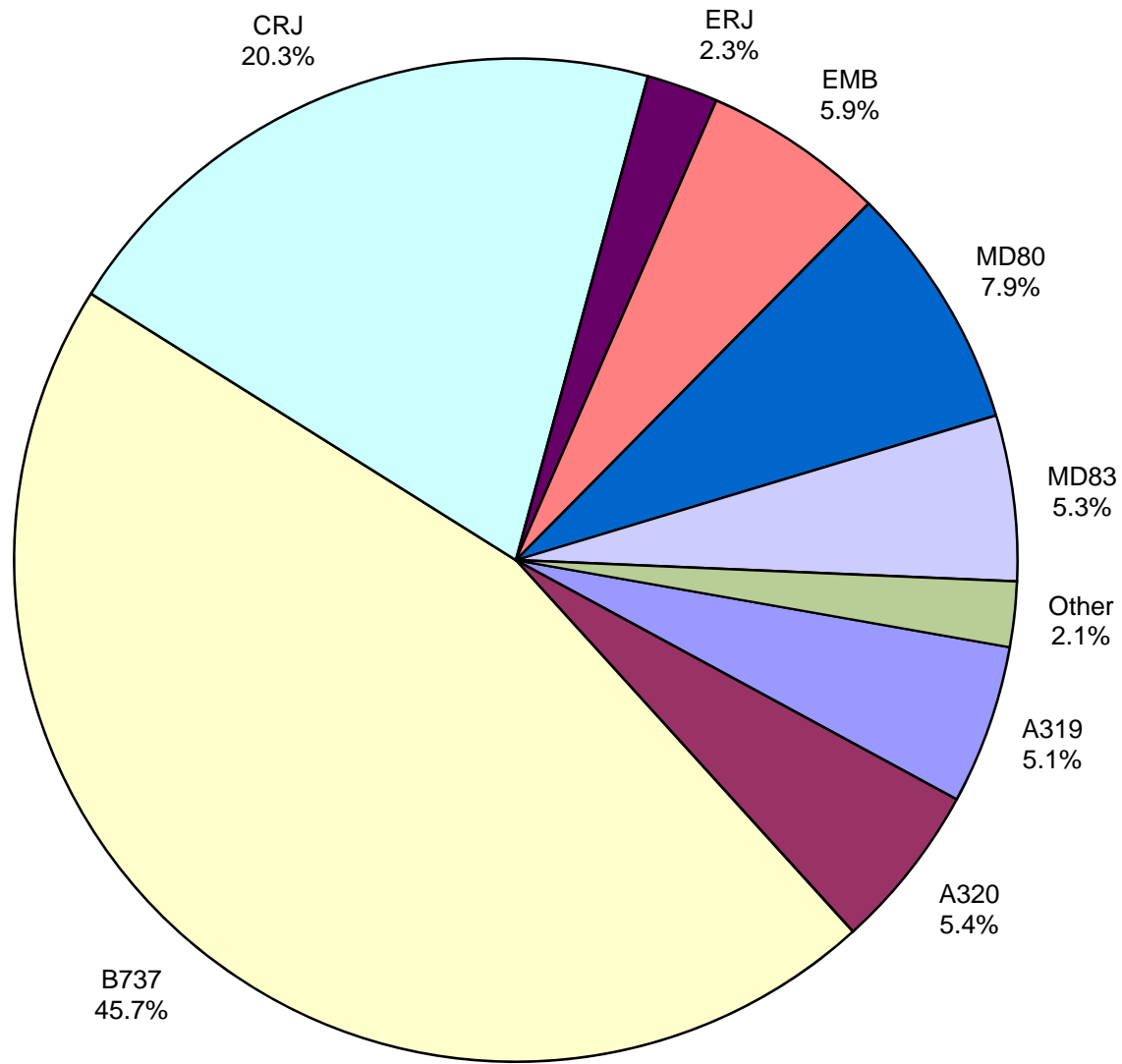
Other
11.5%

Other: Air Cargo Carriers, Atlas Air, Inc.
and Baron Aviation.

FedEx
67.4%

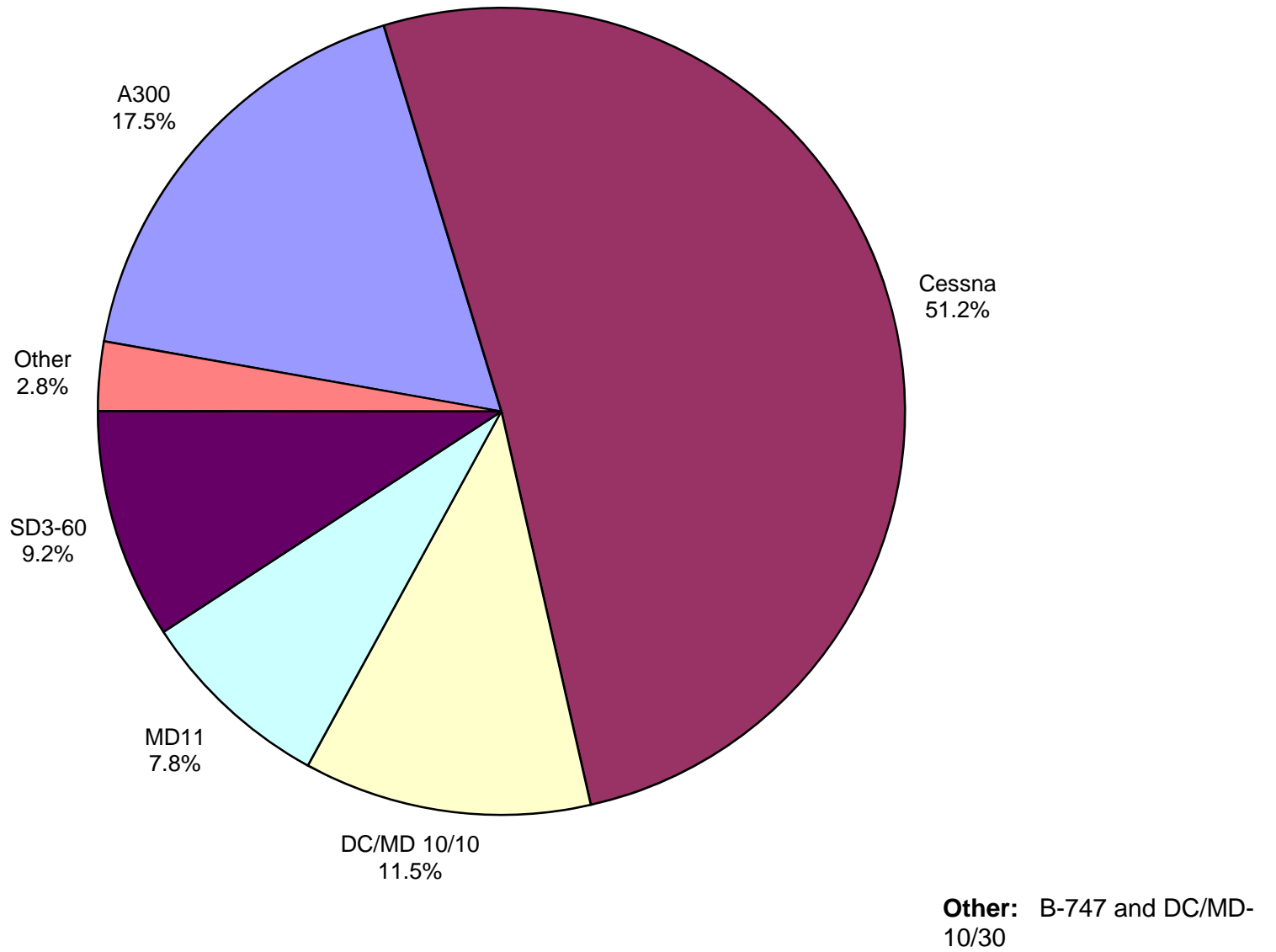
UPS
21.1%

**AUS Scheduled Passenger Aircraft Fleet Mix
September 2013**



Other: B757, B767 and MD90

**AUS Scheduled Cargo Aircraft Fleet Mix
September 2013**



Austin-Bergstrom International Airport

PAX Detail Report - September, 2013

| Period Company | 09/2013 | 09/2012 | YTD Difference Change | | YTD 2013 | YTD 2012 | 2013 Difference Change | | 2012 Share | Share Share | Diff |
|--|----------------|----------------|--------------------------|-------------|------------------|------------------|---------------------------|-------------|---------------|----------------|------|
| Alaska Airlines, Inc. | 8,856 | 8,703 | 153 | 1.8 | 85,904 | 85,154 | 750 | 0.9 | 1.2 | 1.2 | -0.1 |
| Allegiant Air | 0 | 0 | 0 | 0.0 | 1,224 | 2,090 | -866 | -41.4 | 0.0 | 0.0 | 0.0 |
| American Airlines, Inc. - Post-Petition (DIP) | 146,958 | 140,085 | 6,873 | 4.9 | 1,394,138 | 1,410,229 | -16,091 | -1.1 | 18.7 | 20.1 | -1.4 |
| Ameristarjet Charter Inc. | 0 | 0 | 0 | 0.0 | 96 | 2 | 94 | 4,700.0 | 0.0 | 0.0 | 0.0 |
| Continental Airlines | 0 | 31,358 | -31,358 | -100.0 | 103,392 | 525,553 | -422,161 | -80.3 | 1.4 | 7.5 | -6.1 |
| Delta Air Lines | 92,797 | 84,538 | 8,259 | 9.8 | 904,138 | 847,151 | 56,987 | 6.7 | 12.1 | 12.1 | 0.1 |
| Express Jet Airlines, Inc. | 7,908 | 1,920 | 5,988 | 311.9 | 46,979 | 29,208 | 17,771 | 60.8 | 0.6 | 0.4 | 0.2 |
| Frontier Airlines, Inc. | 17,934 | 17,054 | 880 | 5.2 | 114,039 | 152,215 | -38,176 | -25.1 | 1.5 | 2.2 | -0.6 |
| GoJet Airlines d/b/a United Express | 12,868 | 13,116 | -248 | -1.9 | 139,517 | 110,949 | 28,568 | 25.7 | 1.9 | 1.6 | 0.3 |
| JetBlue Airways Corporation | 45,357 | 44,940 | 417 | 0.9 | 490,938 | 435,375 | 55,563 | 12.8 | 6.6 | 6.2 | 0.4 |
| Mesa Airlines Inc - DIP | 30,142 | 26,722 | 3,420 | 12.8 | 288,544 | 288,814 | -270 | -0.1 | 3.9 | 4.1 | -0.2 |
| Miami Air International Inc. | 0 | 0 | 0 | 0.0 | 342 | 0 | 342 | 0.0 | 0.0 | 0.0 | 0.0 |
| Republic Airlines, Inc. | 171 | 0 | 171 | 0.0 | 1,509 | 0 | 1,509 | 0.0 | 0.0 | 0.0 | 0.0 |
| Shuttle America Corporation | 18,939 | 5,202 | 13,737 | 264.1 | 85,595 | 35,866 | 49,729 | 138.7 | 1.2 | 0.5 | 0.6 |
| SkyWest Airlines, Inc | 28,881 | 31,691 | -2,810 | -8.9 | 346,353 | 295,367 | 50,986 | 17.3 | 4.7 | 4.2 | 0.4 |
| Southwest Airlines | 298,464 | 270,284 | 28,180 | 10.4 | 2,894,933 | 2,659,096 | 235,837 | 8.9 | 38.9 | 37.9 | 1.0 |
| Sun Country Airlines/ MN Airlines, LLC | 0 | 0 | 0 | 0.0 | 664 | 346 | 318 | 91.9 | 0.0 | 0.0 | 0.0 |
| United Airlines, Inc. | 53,988 | 32,919 | 21,069 | 64.0 | 417,552 | 127,751 | 289,801 | 226.8 | 5.6 | 1.8 | 3.8 |
| US Airways Group, Inc. | 16,075 | 8,438 | 7,637 | 90.5 | 93,865 | 8,438 | 85,427 | 1,012.4 | 1.3 | 0.1 | 1.1 |
| US Marshall Service / JPATS | 0 | 0 | 0 | 0.0 | 0 | 1 | -1 | -100.0 | 0.0 | 0.0 | 0.0 |
| Virgin America Inc. | 6,645 | 0 | 6,645 | 0.0 | 30,932 | 0 | 30,932 | 0.0 | 0.4 | 0.0 | 0.4 |
| Vision Airlines, Inc. | 0 | 242 | -242 | -100.0 | 982 | 1,251 | -269 | -21.5 | 0.0 | 0.0 | 0.0 |
| World Atlantic Airlines | 0 | 0 | 0 | 0.0 | 164 | 0 | 164 | 0.0 | 0.0 | 0.0 | 0.0 |
| Report Totals | 785,983 | 717,212 | 68,771 | 9.6% | 7,441,800 | 7,014,856 | 426,944 | 6.1% | | | |

Statistics Included in Report:

Domestic Passengers: Enplaned Revenue, Deplaned Revenue, Enplaned Non-Revenue, Deplaned Non-Revenue
 International Passengers: Enplaned Revenue, Deplaned Revenue, Enplaned Non-Revenue, Deplaned Non-Revenue

Austin-Bergstrom International Airport

Summary Landing Report

Landing Type: Total

| Month | 2013 | | 2012 | | 2011 | | % Change 2013 - 2012 | | % Change 2012 - 2011 | |
|-----------------------------------|--------|---------------|--------|---------------|--------|---------------|----------------------|--------|----------------------|--------|
| | Count | Weight | Count | Weight | Count | Weight | Count | Weight | Count | Weight |
| January | 4,176 | 469,844,487 | 4,033 | 441,029,354 | 4,214 | 463,934,037 | 3.55% | 6.53% | -4.30% | -4.94% |
| February | 3,824 | 428,117,442 | 3,892 | 432,535,353 | 3,776 | 417,430,253 | -1.75% | -1.02% | 3.07% | 3.62% |
| March | 4,660 | 536,989,561 | 4,372 | 496,635,886 | 4,539 | 498,238,970 | 6.59% | 8.13% | -3.68% | -0.32% |
| April | 4,425 | 504,739,959 | 4,260 | 479,535,174 | 4,274 | 479,035,366 | 3.87% | 5.26% | -0.33% | 0.10% |
| May | 4,687 | 545,881,910 | 4,385 | 509,470,460 | 4,564 | 500,806,412 | 6.89% | 7.15% | -3.92% | 1.73% |
| June | 4,680 | 534,286,437 | 4,425 | 503,932,220 | 4,378 | 490,983,485 | 5.76% | 6.02% | 1.07% | 2.64% |
| July | 4,788 | 547,957,989 | 4,586 | 524,142,423 | 4,499 | 504,634,624 | 4.40% | 4.54% | 1.93% | 3.87% |
| August | 4,737 | 541,522,098 | 4,532 | 519,056,485 | 4,415 | 499,285,697 | 4.52% | 4.33% | 2.65% | 3.96% |
| September | 4,320 | 497,853,836 | 4,181 | 484,324,879 | 4,226 | 477,495,780 | 3.32% | 2.79% | -1.06% | 1.43% |
| October | | | 4,424 | 512,451,397 | 4,309 | 490,427,499 | | | 2.67% | 4.49% |
| November | | | 4,283 | 504,246,217 | 4,078 | 460,449,178 | | | 5.03% | 9.51% |
| December | | | 4,391 | 498,622,124 | 4,234 | 473,997,984 | | | 3.71% | 5.19% |
| Totals for Selected Period | 40,297 | 4,607,193,719 | 38,666 | 4,390,662,234 | 38,885 | 4,331,844,624 | 4.22% | 4.93% | -0.56% | 1.36% |
| Yearly Totals | 40,297 | 4,607,193,719 | 51,764 | 5,905,981,972 | 51,506 | 5,756,719,285 | | | 0.50% | 2.59% |