

# Austin-Bergstrom International Airport

## Aviation Activity Report

### Calendar Year 2013 vs 2012

	10/2013	10/2012	Percent Change	01/2013 - 10/2013	01/2012 - 10/2012	Percent Change
<b><u>Passenger Activity</u></b>						
Domestic Enplaned Revenue	423,736	396,801	6.79	4,026,216	3,805,492	5.80
Domestic Deplaned Revenue	432,451	404,183	6.99	4,054,102	3,821,090	6.10
International Enplaned Revenue	1,013	745	35.97	19,909	9,467	110.30
International Deplaned Revenue	1,241	1,006	23.36	22,855	10,502	117.63
Domestic Enplaned Non-Revenue	10,345	10,165	1.77	104,717	99,241	5.52
Domestic Deplaned Non-Revenue	9,218	9,061	1.73	91,752	91,013	0.81
International Enplaned Non-Revenue	8	0	0.00	100	0	0.00
International Deplaned Non-Revenue	4	0	0.00	165	12	1,275.00
Passenger Totals	878,016	821,961	6.82	8,319,816	7,836,817	6.16

**CURRENT PASSENGER RECORD = 922,615    RECORD SET = JULY 2013**

#### **Aircraft Operations**

Air Carrier	8,754	8,342	4.94	84,921	81,498	4.20
Commuter & Air Taxi	1,454	1,514	-3.96	14,006	13,083	7.05
Military	387	499	-22.44	5,166	4,932	4.74
General Aviation						
Itinerant	4,334	4,728	-8.33	41,196	41,309	-0.27
Local	130	188	-30.85	2,086	1,748	19.34
Total G.A.	4,464	4,916	-9.19	43,282	43,057	0.52
Total Operations	15,059	15,271	-1.39	147,375	142,570	3.37

# Austin-Bergstrom International Airport

## Aviation Activity Report

### Calendar Year 2013 vs 2012

	10/2013	10/2012	Percent Change	01/2013 - 10/2013	01/2012 - 10/2012	Percent Change
<b><u>Cargo Activity</u></b>						
Mail						
Domestic Enplaned Mail	148,806	81,651	82.25	1,121,038	824,121	36.03
Domestic Deplaned Mail	212,386	232,955	-8.83	1,661,087	1,814,716	-8.47
International Enplaned Mail	0	0	0.00	0	0	0.00
International Deplaned Mail	0	0	0.00	2,404	0	0.00
South Terminal-Intl Enplaned Mail	0	0	0.00	0	0	0.00
South Terminal-Intl Deplaned Mail	0	0	0.00	0	0	0.00
Mail Totals	361,192	314,606	14.81	2,784,529	2,638,837	5.52
Cargo						
Domestic Enplaned Cargo	6,023,577	5,089,196	18.36	52,005,289	51,308,750	1.36
Domestic Deplaned Cargo	6,385,353	5,828,695	9.55	59,100,646	56,319,615	4.94
International Enplaned Cargo	409,458	412,580	-0.76	4,600,909	3,891,531	18.23
International Deplaned Cargo	342,905	208,866	64.17	4,423,845	3,458,289	27.92
South Terminal-Intl Enplaned Cargo	0	0	0.00	0	0	0.00
South Terminal-Intl Deplaned Cargo	0	0	0.00	0	0	0.00
Cargo Totals	13,161,293	11,539,337	14.06	120,130,689	114,978,185	4.48
Belly Freight						
Domestic Enplaned Belly Freight	251,865	376,168	-33.04	2,855,455	5,400,226	-47.12
Domestic Deplaned Belly Freight	451,442	380,420	18.67	4,268,530	4,414,168	-3.30
International Enplaned Belly Freight	0	0	0.00	0	0	0.00
International Deplaned Belly Freight	0	0	0.00	0	0	0.00
South Terminal-Intl Enplaned Belly Frt	0	0	0.00	0	0	0.00
South Terminal-Intl Deplaned Belly Frt	0	0	0.00	0	0	0.00
Belly Freight Totals	703,307	756,588	-7.04	7,123,985	9,814,394	-27.41
Cargo Totals (Mail, Cargo, Belly Freight)	14,225,792	12,610,531	12.81	130,039,203	127,431,416	2.05

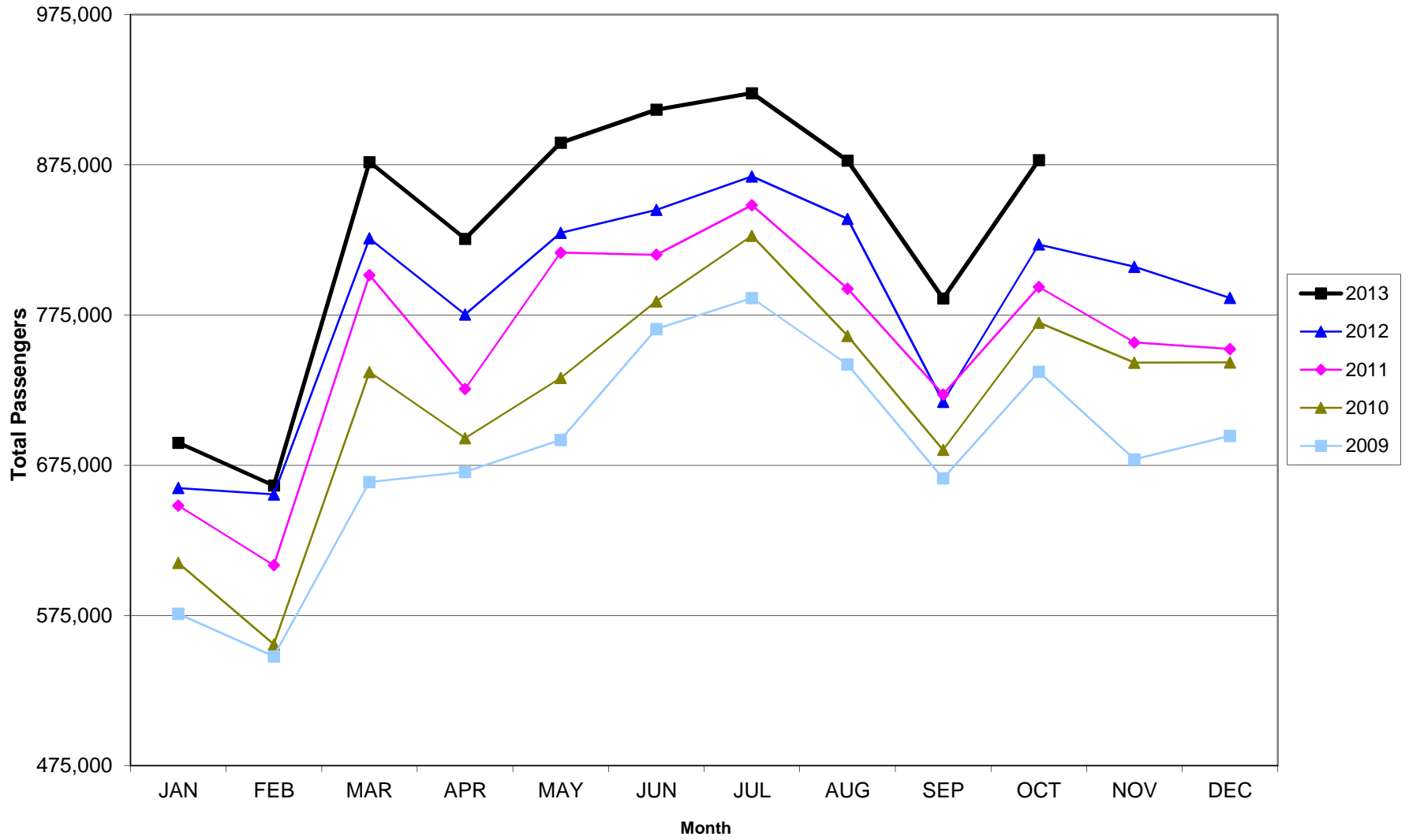
CURRENT CARGO RECORD = 40,215,518

RECORD SET = MARCH 2001

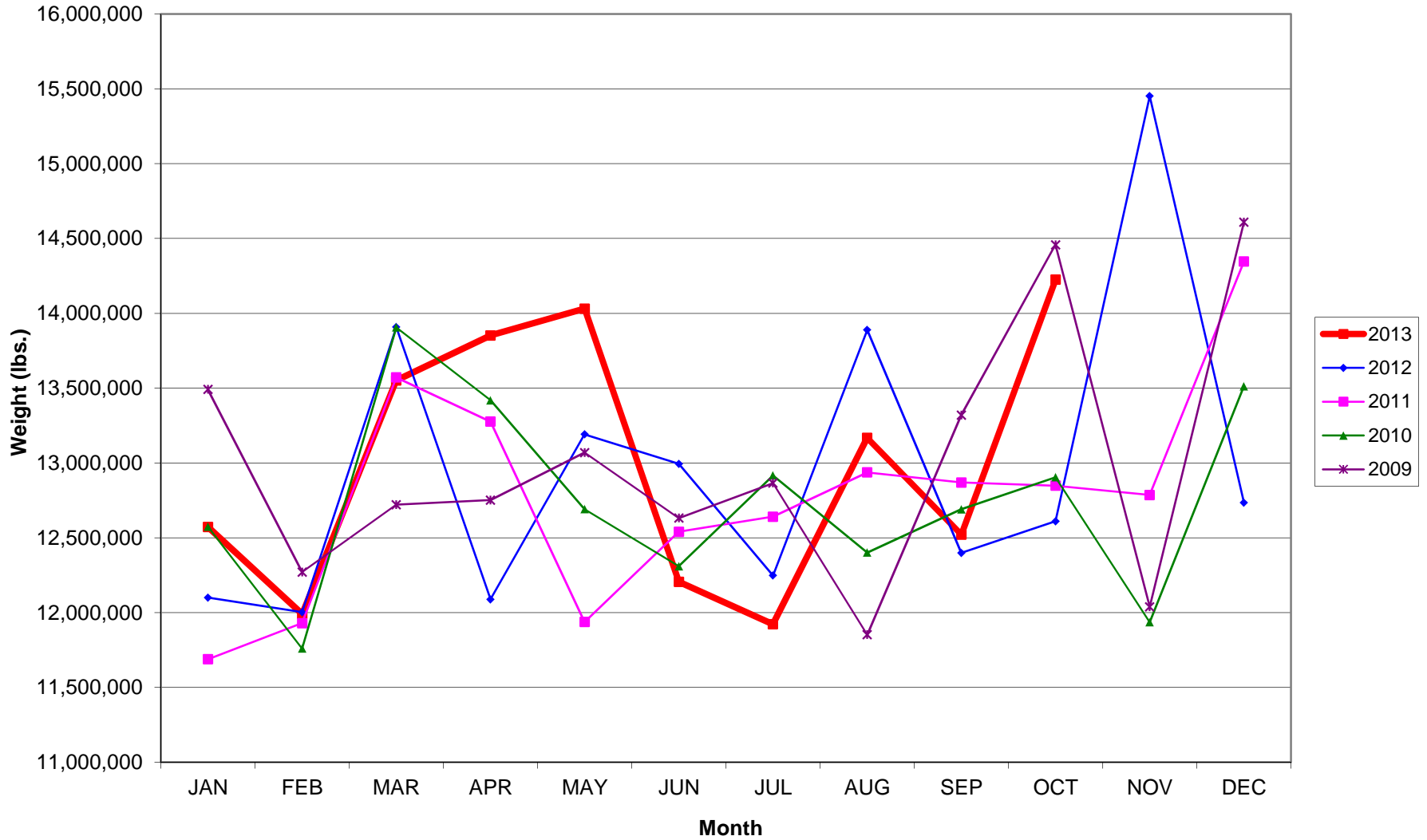
**AUS – Airline Codes**  
October 2013

<b><u>Code</u></b>	<b><u>Carrier</u></b>
AS	Alaska Airlines, Inc.
G4	Allegiant Air, LLC
AA	American Airlines, Inc. Post-Petition (DIP) (Includes American Eagle)
DL	Delta Airlines
F9	Frontier Airlines
B6	JetBlue Airways Corp.
RW	Republic Airlines, Inc.
WN	Southwest Airlines
SY	Sun Country Airlines/MN Airlines, Inc.
VW	Transportes Aeromar S.A. de C.V.
UA	United Airlines, Inc.
US	US Airways Group, Inc.
VX	Virgin America Inc.
V2	Vision Airlines, Inc.

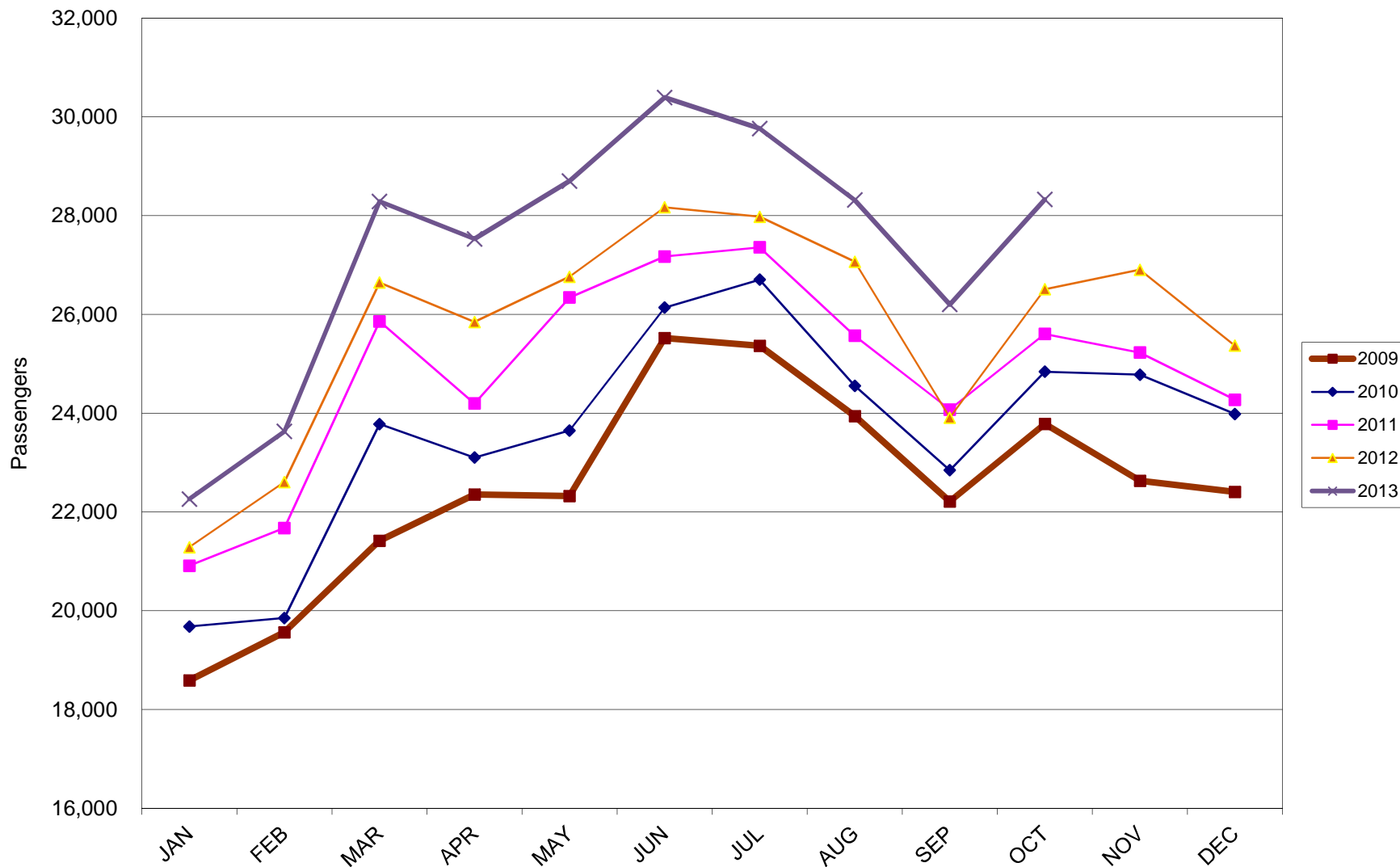
### AUSTIN PASSENGER TRAFFIC 5 Year Trend



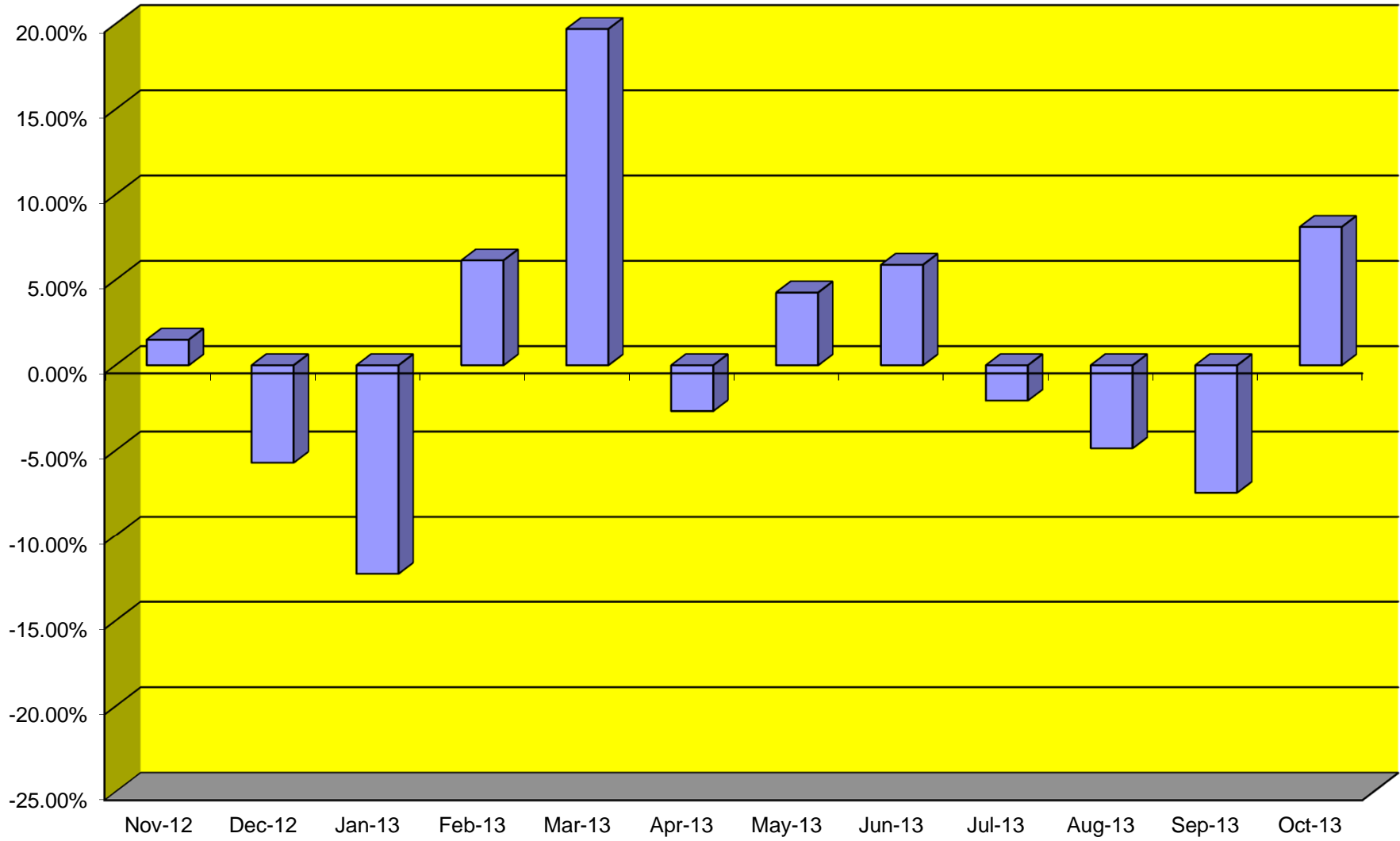
### TOTAL CARGO POUNDAGE - AUSTIN, TEXAS



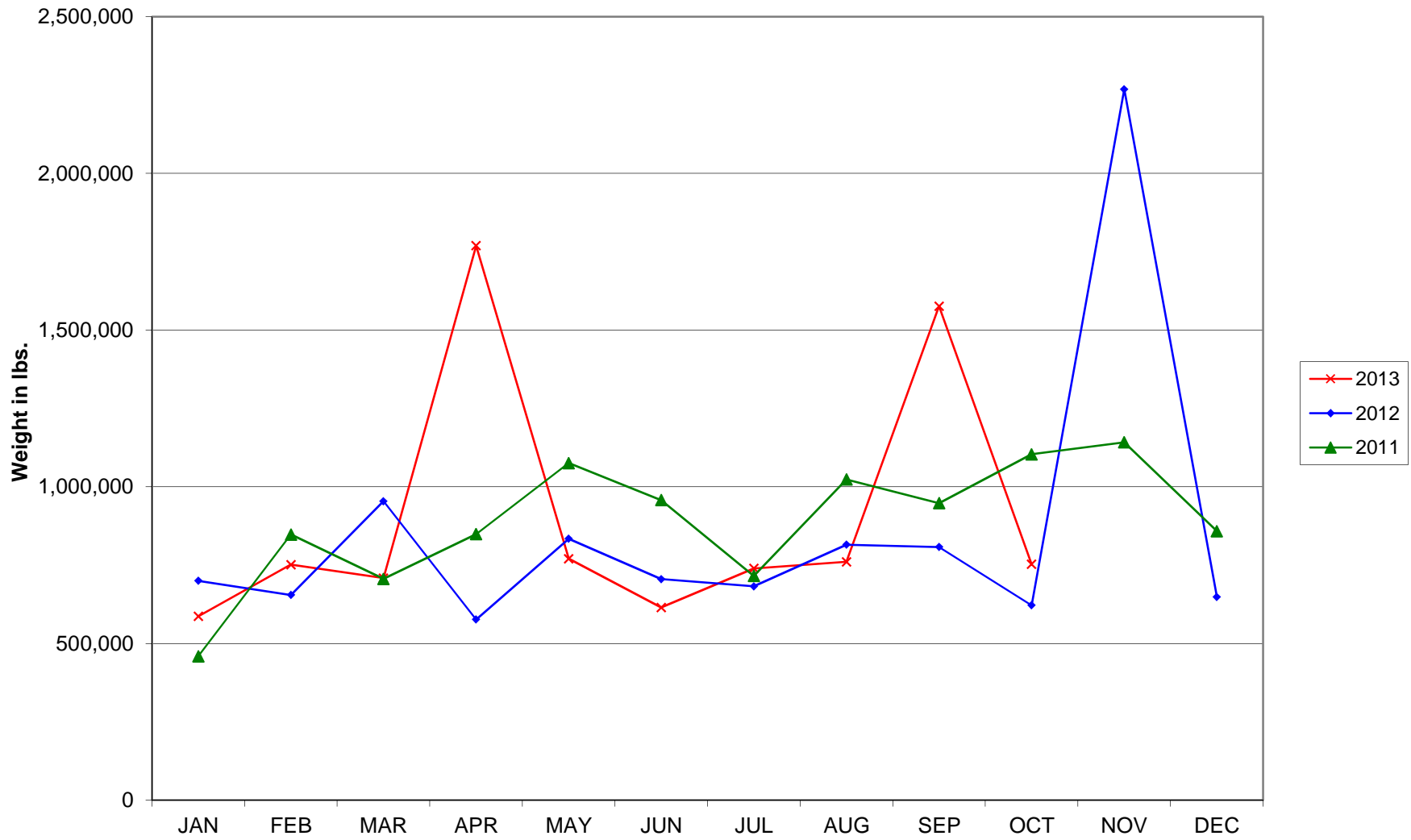
Average Daily Passengers



**Monthly % Change in Average Daily Passengers**

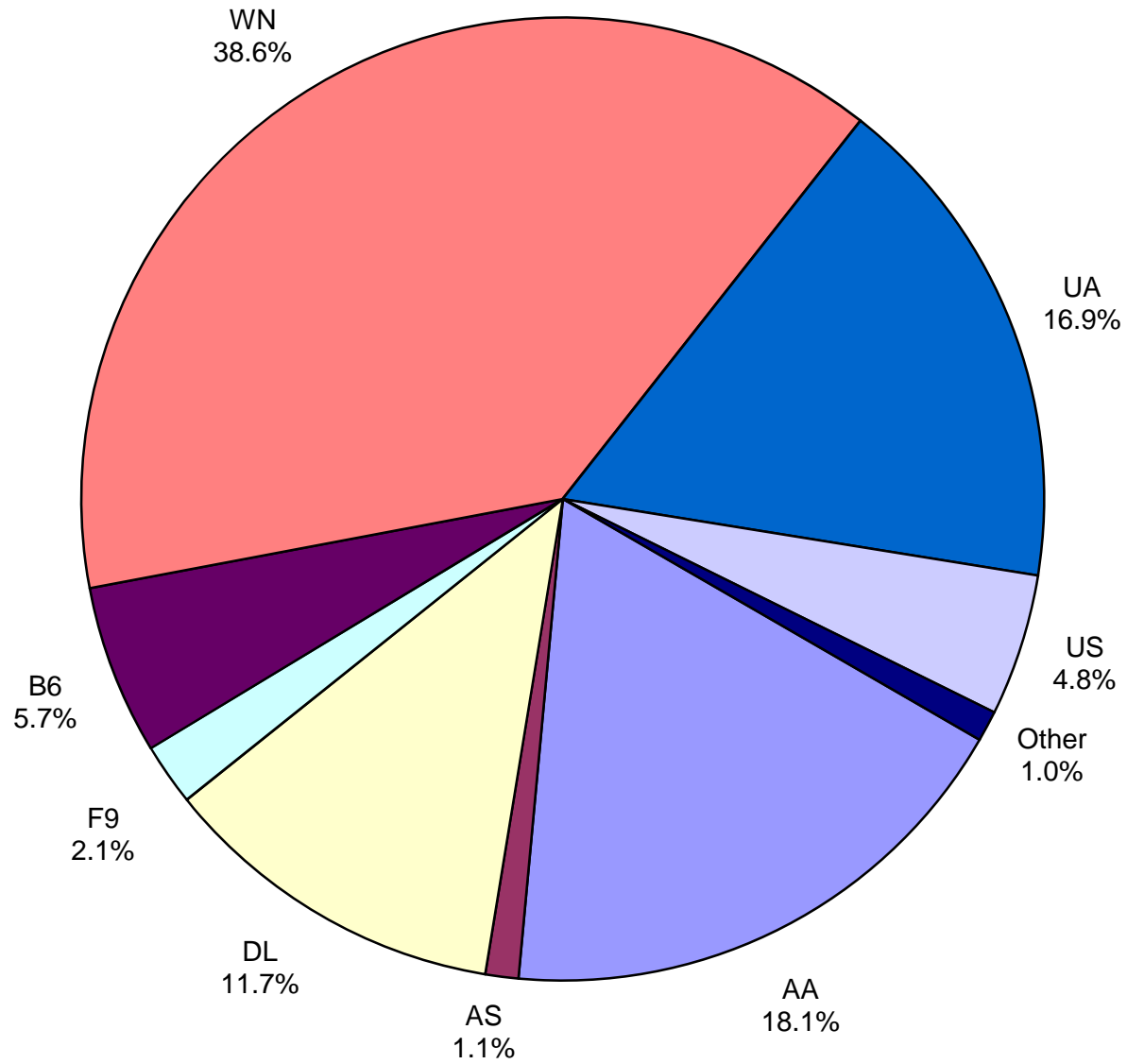


### History of International Air Cargo





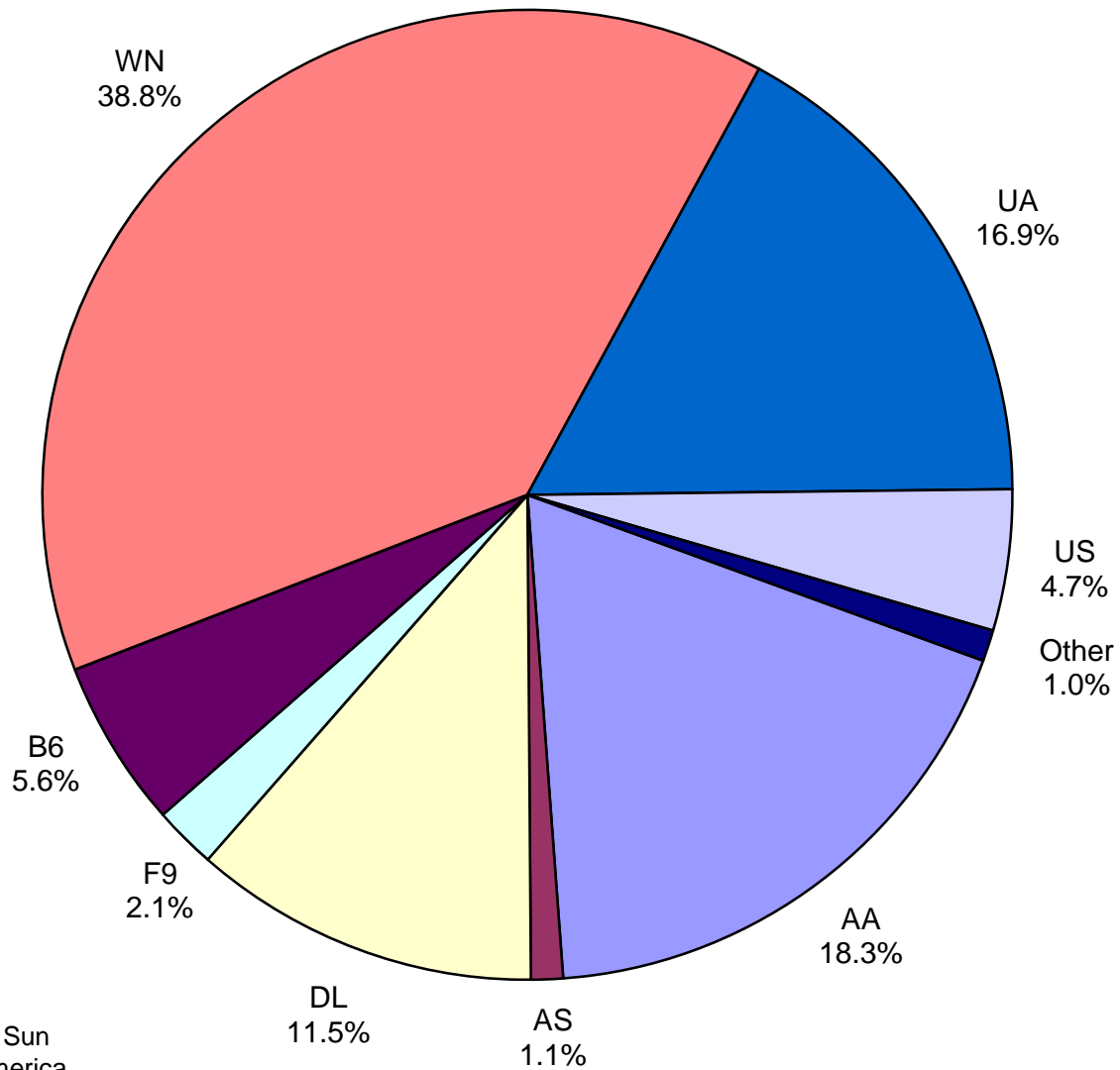
**Total Passengers  
October 2013**



**Other:** Allegiant Air, Republic Airlines, Sun Country, Transportes Aeromar, Virgin America and Vision Airlines

**Note:** Delta, United Airlines and US Airways percentages includes Affiliates.

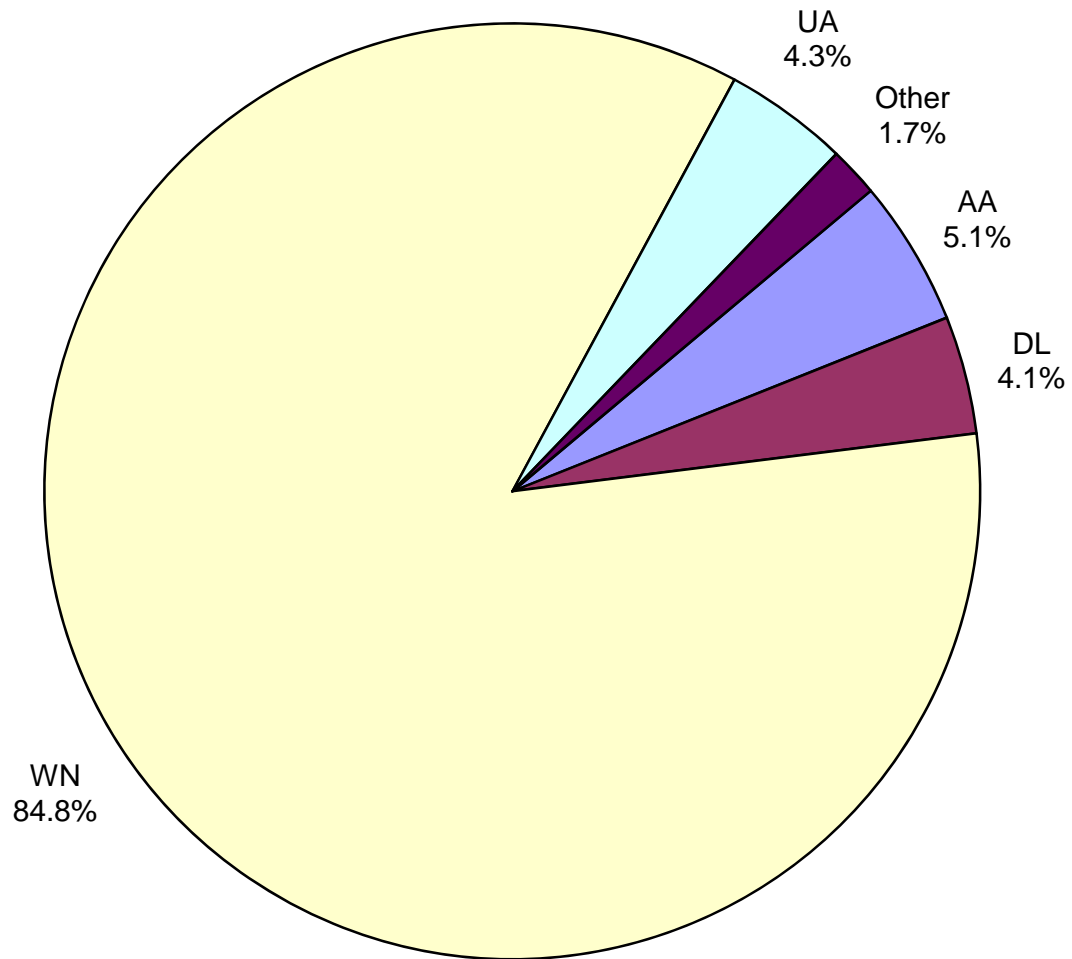
**All Passenger Carriers  
Enplaned Revenue Passengers  
October 2013**



**Other:** Allegiant Air, Republic Airlines, Sun Country, Transportes Aeromar, Virgin America and Vision Airlines

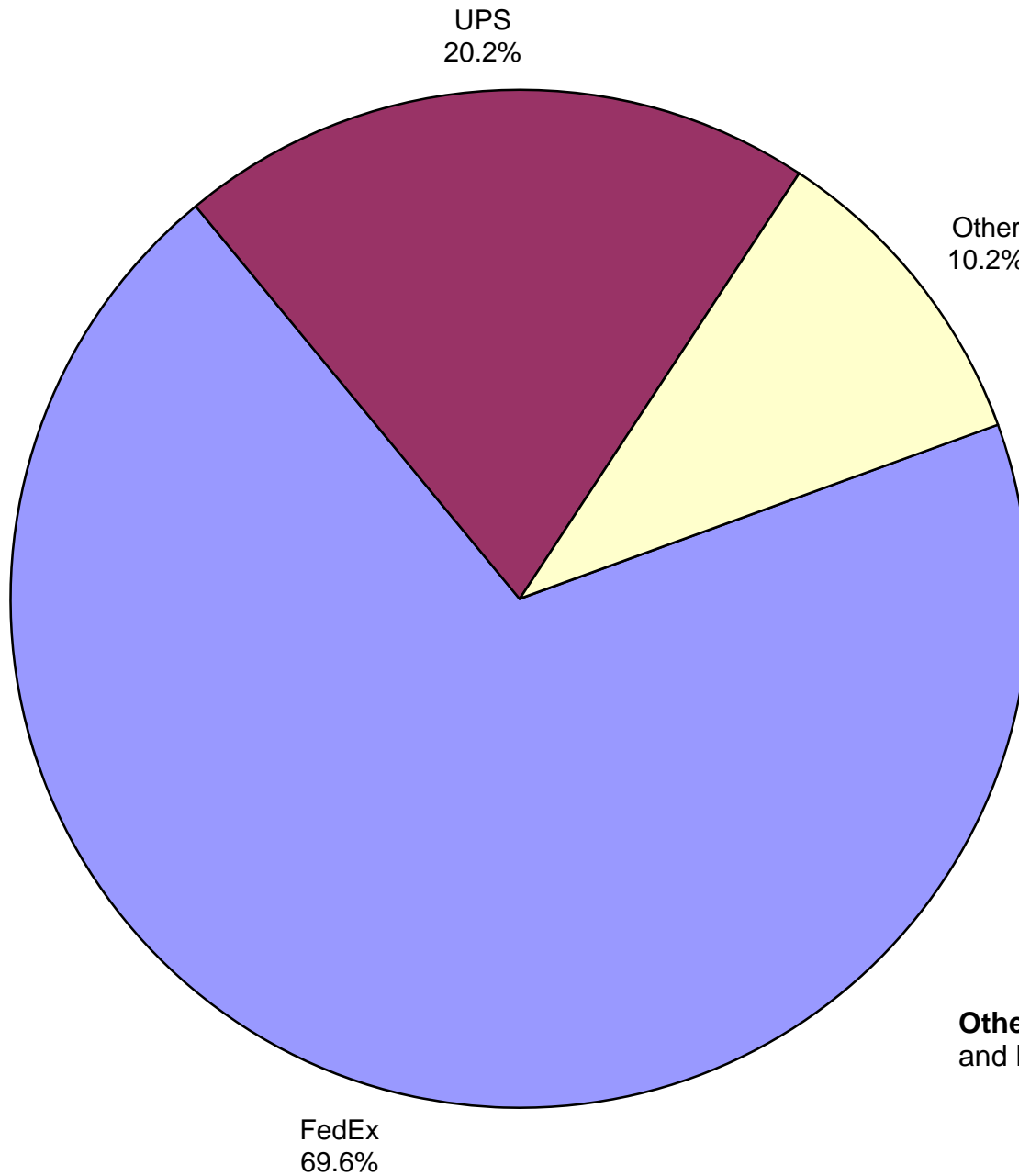
**Note:** Delta, United Airlines and US Airways percentages includes Affiliates.

**AUS Belly Freight Market Shares  
October 2013**



**Other** = Alaska Airlines, JetBlue and US Airways.

**Air Cargo Market Shares  
October 2013**



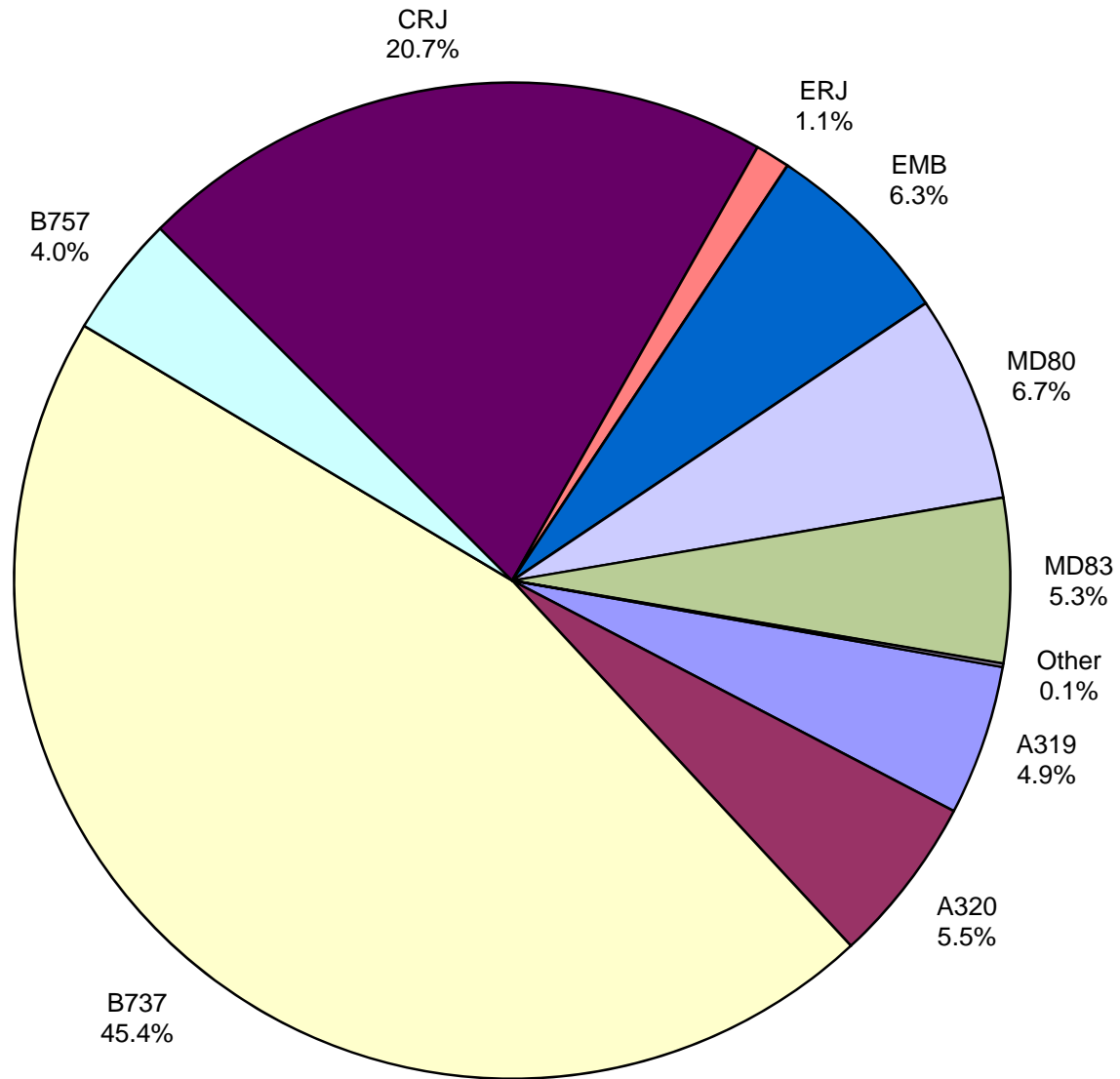
Other  
10.2%

**Other:** Air Cargo Carriers, Atlas Air, Inc.  
and Baron Aviation.

FedEx  
69.6%

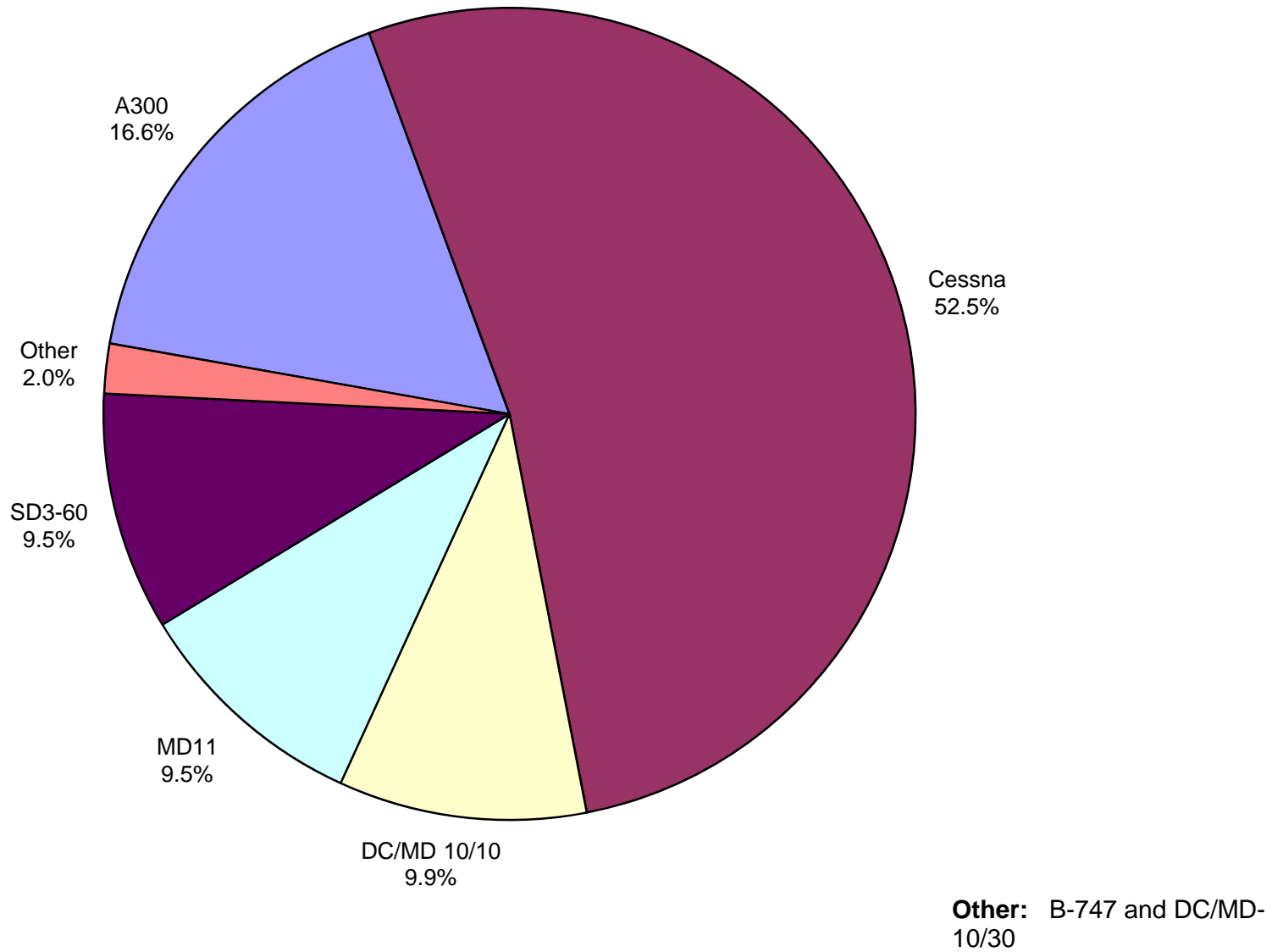
UPS  
20.2%

**AUS Scheduled Passenger Aircraft Fleet Mix  
October 2013**



**Other:** DC-9 and MD-88

**AUS Scheduled Cargo Aircraft Fleet Mix  
October 2013**



# Austin-Bergstrom International Airport

## PAX Detail Report - October, 2013

Period Company	10/2013	10/2012	YTD		YTD 2013	YTD 2012	2013		2012 Share	Share Share	Diff
			Difference	Change			Difference	Change			
Alaska Airlines, Inc.	9,724	9,360	364	3.9	95,628	94,514	1,114	1.2	1.1	1.2	-0.1
Allegiant Air (Charters)	296	350	-54	-15.4	1,520	2,440	-920	-37.7	0.0	0.0	0.0
Allegiant Air, LLC (Scheduled Service)	268	0	268	0.0	268	0	268	0.0	0.0	0.0	0.0
American Airlines, Inc. - Post-Petition (DIP)	159,188	162,855	-3,667	-2.3	1,553,326	1,573,084	-19,758	-1.3	18.7	20.1	-1.4
Ameristarjet Charter Inc.	0	0	0	0.0	96	2	94	4,700.0	0.0	0.0	0.0
Continental Airlines	0	50,713	-50,713	-100.0	103,392	576,266	-472,874	-82.1	1.2	7.4	-6.1
Delta Air Lines	102,661	100,770	1,891	1.9	1,006,799	947,921	58,878	6.2	12.1	12.1	0.0
Express Jet Airlines, Inc.	0	3,491	-3,491	-100.0	46,979	32,699	14,280	43.7	0.6	0.4	0.1
Frontier Airlines, Inc.	18,253	18,713	-460	-2.5	132,292	170,928	-38,636	-22.6	1.6	2.2	-0.6
GoJet Airlines d/b/a United Express	0	13,302	-13,302	-100.0	139,517	124,251	15,266	12.3	1.7	1.6	0.1
JetBlue Airways Corporation	49,946	53,243	-3,297	-6.2	540,884	488,618	52,266	10.7	6.5	6.2	0.3
Mesa Airlines Inc - DIP	0	31,833	-31,833	-100.0	288,544	320,647	-32,103	-10.0	3.5	4.1	-0.6
Miami Air International Inc.	0	0	0	0.0	342	0	342	0.0	0.0	0.0	0.0
Republic Airlines, Inc.	192	0	192	0.0	1,701	0	1,701	0.0	0.0	0.0	0.0
Shuttle America Corporation	0	3,019	-3,019	-100.0	85,595	38,885	46,710	120.1	1.0	0.5	0.5
SkyWest Airlines, Inc	0	28,849	-28,849	-100.0	346,353	324,216	22,137	6.8	4.2	4.1	0.0
Southwest Airlines	338,760	307,420	31,340	10.2	3,233,693	2,966,516	267,177	9.0	38.9	37.9	1.0
Sun Country Airlines/ MN Airlines, LLC	267	208	59	28.4	931	554	377	68.1	0.0	0.0	0.0
Transportes Aeromar S.A. de C.V.	179	0	179	0.0	179	0	179	0.0	0.0	0.0	0.0
United Airlines, Inc.	148,649	28,018	120,631	430.5	566,201	155,769	410,432	263.5	6.8	2.0	4.8
US Airways Group, Inc.	41,785	9,817	31,968	325.6	135,650	18,255	117,395	643.1	1.6	0.2	1.4
US Marshall Service / JPATS	0	0	0	0.0	0	1	-1	-100.0	0.0	0.0	0.0
Virgin America Inc.	7,648	0	7,648	0.0	38,580	0	38,580	0.0	0.5	0.0	0.5
Vision Airlines, Inc.	200	0	200	0.0	1,182	1,251	-69	-5.5	0.0	0.0	0.0
World Atlantic Airlines	0	0	0	0.0	164	0	164	0.0	0.0	0.0	0.0
<b>Report Totals</b>	<b>878,016</b>	<b>821,961</b>	<b>56,055</b>	<b>6.8%</b>	<b>8,319,816</b>	<b>7,836,817</b>	<b>482,999</b>	<b>6.2%</b>			

Statistics Included in Report:

Domestic Passengers: Enplaned Revenue, Deplaned Revenue, Enplaned Non-Revenue, Deplaned Non-Revenue  
 International Passengers: Enplaned Revenue, Deplaned Revenue, Enplaned Non-Revenue, Deplaned Non-Revenue

# Austin-Bergstrom International Airport

## Summary Landing Report

### Landing Type: Total

Month	2013		2012		2011		% Change 2013 - 2012		% Change 2012 - 2011	
	Count	Weight	Count	Weight	Count	Weight	Count	Weight	Count	Weight
January	4,176	469,844,487	4,033	441,029,354	4,214	463,934,037	3.55%	6.53%	-4.30%	-4.94%
February	3,824	428,117,442	3,892	432,535,353	3,776	417,430,253	-1.75%	-1.02%	3.07%	3.62%
March	4,660	536,989,561	4,372	496,635,886	4,539	498,238,970	6.59%	8.13%	-3.68%	-0.32%
April	4,425	504,739,959	4,260	479,535,174	4,274	479,035,366	3.87%	5.26%	-0.33%	0.10%
May	4,687	545,881,910	4,385	509,470,460	4,564	500,806,412	6.89%	7.15%	-3.92%	1.73%
June	4,680	534,286,437	4,425	503,932,220	4,378	490,983,485	5.76%	6.02%	1.07%	2.64%
July	4,788	547,957,989	4,586	524,142,423	4,499	504,634,624	4.40%	4.54%	1.93%	3.87%
August	4,737	541,522,098	4,532	519,056,485	4,415	499,285,697	4.52%	4.33%	2.65%	3.96%
September	4,320	497,853,836	4,181	484,324,879	4,226	477,495,780	3.32%	2.79%	-1.06%	1.43%
October	4,613	540,694,783	4,424	512,451,397	4,309	490,427,499	4.27%	5.51%	2.67%	4.49%
November			4,283	504,246,217	4,078	460,449,178			5.03%	9.51%
December			4,391	498,622,124	4,234	473,997,984			3.71%	5.19%
<b>Totals for Selected Period</b>	44,910	5,147,888,502	43,090	4,903,113,631	43,194	4,822,272,123	4.22%	4.99%	-0.24%	1.68%
<b>Yearly Totals</b>	44,910	5,147,888,502	51,764	5,905,981,972	51,506	5,756,719,285			0.50%	2.59%