

Austin-Bergstrom International Airport

Aviation Activity Report

Calendar Year 2012 vs 2011

	10/2012	10/2011	Percent Change	01/2012 - 10/2012	01/2011 - 10/2011	Percent Change
<u>Passenger Activity</u>						
Domestic Enplaned Revenue	396,801	383,080	3.58	3,805,492	3,678,803	3.44
Domestic Deplaned Revenue	404,183	390,764	3.43	3,821,090	3,685,575	3.68
International Enplaned Revenue	745	0	0.00	9,467	4,546	108.25
International Deplaned Revenue	1,006	173	481.50	10,502	4,726	122.22
Domestic Enplaned Non-Revenue	10,165	10,263	-0.95	99,241	102,920	-3.57
Domestic Deplaned Non-Revenue	9,061	9,328	-2.86	91,013	95,143	-4.34
International Enplaned Non-Revenue	0	0	0.00	0	34	-100.00
International Deplaned Non-Revenue	0	32	-100.00	12	63	-80.95
South Terminal-Intl Enplaned Revenue	0	0	0.00	0	0	0.00
South Terminal-Intl Deplaned Revenue	0	0	0.00	0	0	0.00
South Terminal-Intl Enplaned Non-Revenue	0	0	0.00	0	0	0.00
South Terminal-Intl Deplaned Non-Revenue	0	0	0.00	0	0	0.00
Passenger Totals	821,961	793,640	3.57	7,836,817	7,571,810	3.50

CURRENT PASSENGER RECORD = 869,308

RECORD SET = JUNE 2008

Aircraft Operations

Air Carrier	8,342	8,028	3.91	81,498	79,581	2.41
Commuter & Air Taxi	1,514	1,598	-5.26	13,083	15,096	-13.33
Military	499	495	0.81	4,932	5,850	-15.69
General Aviation						
Itinerant	4,728	4,554	3.82	41,309	45,847	-9.90
Local	188	208	-9.62	1,748	2,659	-34.26
Total G.A.	4,916	4,762	3.23	43,057	48,506	-11.23
Total Operations	15,271	14,883	2.61	142,570	149,033	-4.34

Austin-Bergstrom International Airport

Aviation Activity Report

Calendar Year 2012 vs 2011

	10/2012	10/2011	Percent Change	01/2012 - 10/2012	01/2011 - 10/2011	Percent Change
<u>Cargo Activity</u>						
Mail						
Domestic Enplaned Mail	81,651	60,507	34.94	824,121	1,124,294	-26.70
Domestic Deplaned Mail	232,955	165,539	40.73	1,814,716	2,349,810	-22.77
International Enplaned Mail	0	0	0.00	0	0	0.00
International Deplaned Mail	0	0	0.00	0	0	0.00
South Terminal-Intl Enplaned Mail	0	0	0.00	0	0	0.00
South Terminal-Intl Deplaned Mail	0	0	0.00	0	0	0.00
Mail Totals	314,606	226,046	39.18	2,638,837	3,474,104	-24.04
Cargo						
Domestic Enplaned Cargo	5,089,196	5,181,958	-1.79	51,308,750	52,024,685	-1.38
Domestic Deplaned Cargo	5,828,695	5,453,509	6.88	56,319,615	52,719,159	6.83
International Enplaned Cargo	412,580	625,896	-34.08	3,891,531	4,523,465	-13.97
International Deplaned Cargo	208,866	477,644	-56.27	3,458,289	4,160,631	-16.88
South Terminal-Intl Enplaned Cargo	0	0	0.00	0	0	0.00
South Terminal-Intl Deplaned Cargo	0	0	0.00	0	0	0.00
Cargo Totals	11,539,337	11,739,007	-1.70	114,978,185	113,427,940	1.37
Belly Freight						
Domestic Enplaned Belly Freight	376,168	471,783	-20.27	5,400,226	4,573,752	18.07
Domestic Deplaned Belly Freight	380,420	411,589	-7.57	4,414,168	4,763,285	-7.33
International Enplaned Belly Freight	0	0	0.00	0	0	0.00
International Deplaned Belly Freight	0	0	0.00	0	0	0.00
South Terminal-Intl Enplaned Belly Frt	0	0	0.00	0	0	0.00
South Terminal-Intl Deplaned Belly Frt	0	0	0.00	0	0	0.00
Belly Freight Totals	756,588	883,372	-14.35	9,814,394	9,337,037	5.11
Cargo Totals (Mail, Cargo, Belly Freight)	12,610,531	12,848,425	-1.85	127,431,416	126,239,081	0.94

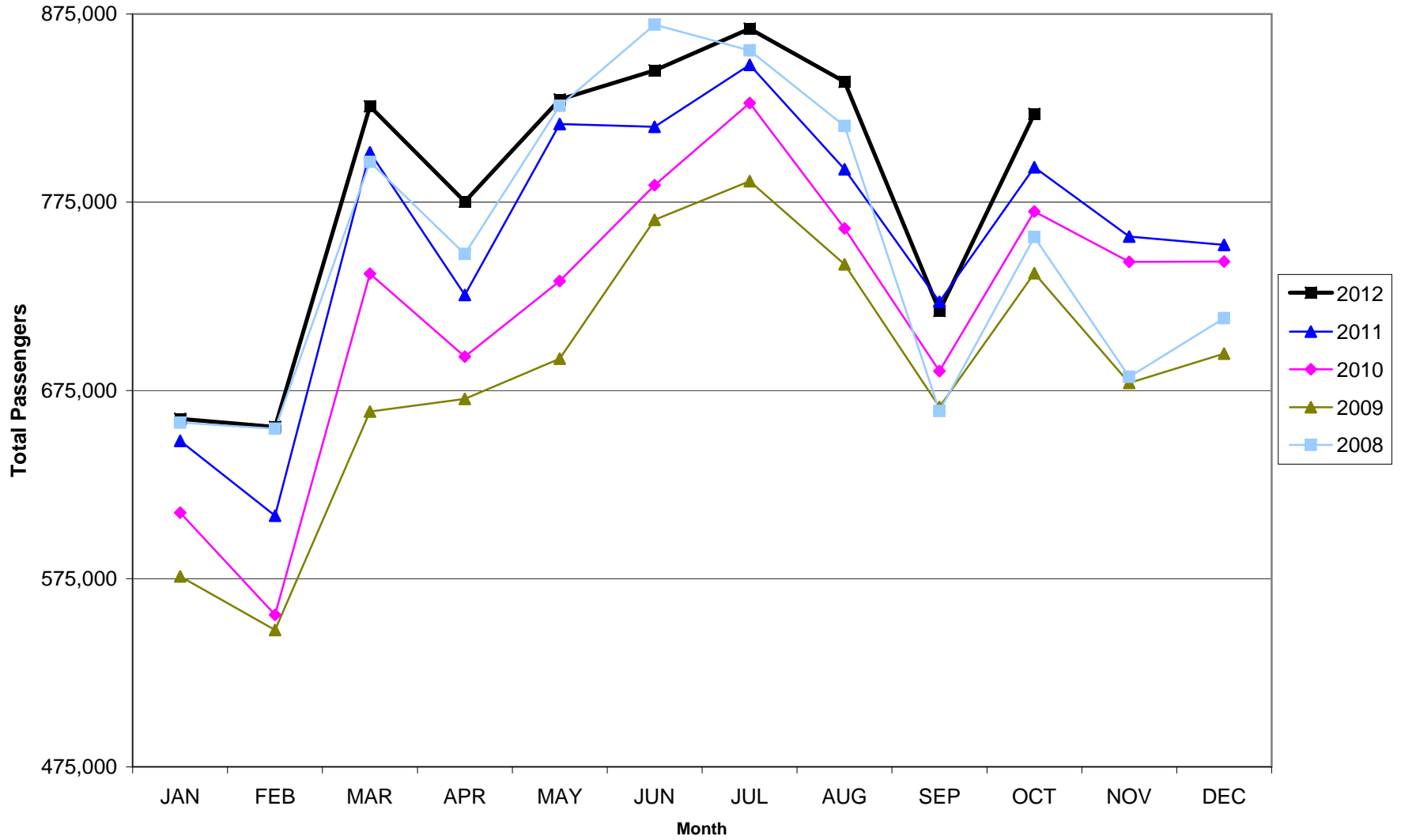
CURRENT CARGO RECORD = 40,215,518

RECORD SET = MARCH 2001

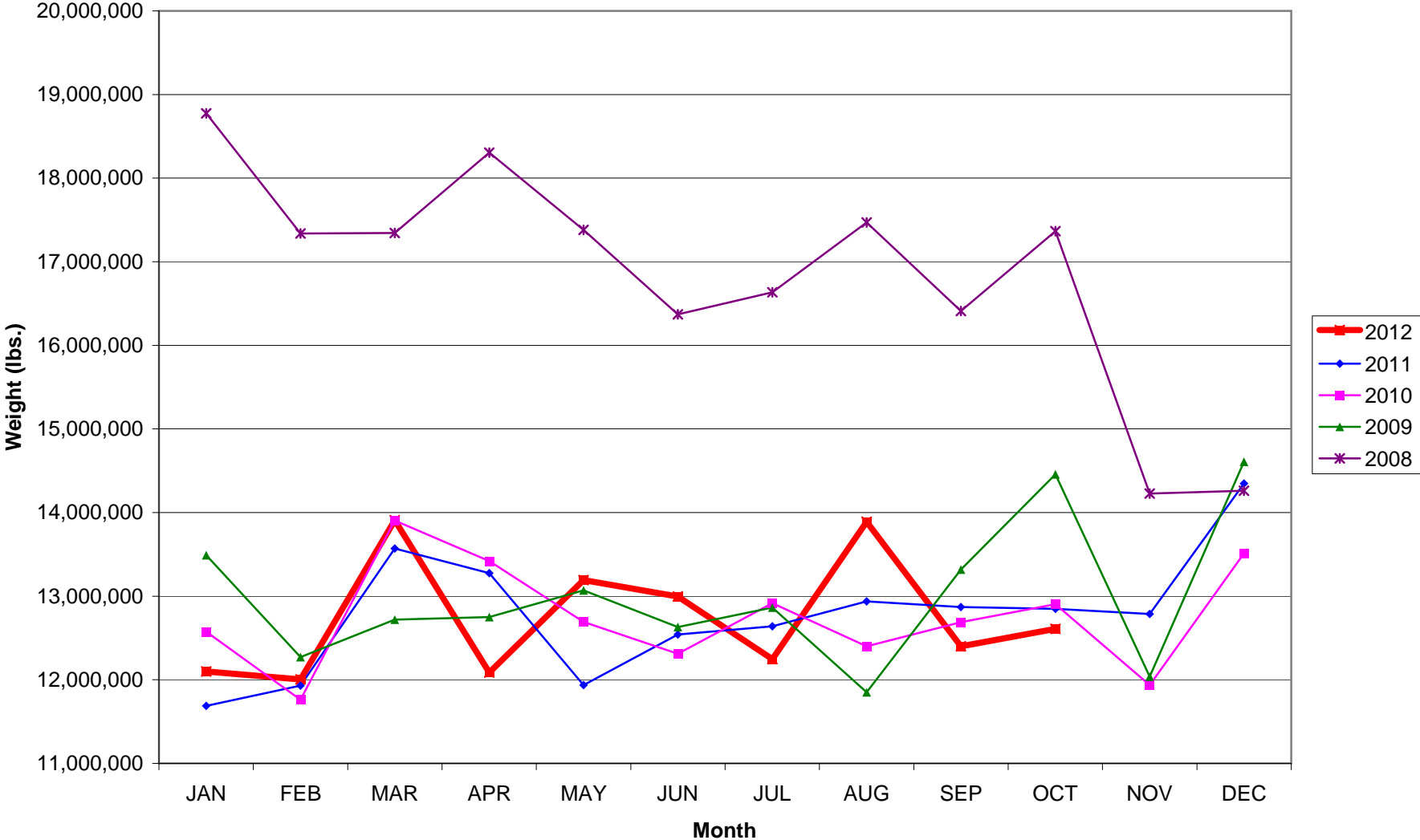
AUS – Airline Codes
October 2012

<u>Code</u>	<u>Carrier</u>
AS	Alaska Airlines, Inc.
G4	Allegiant Air
AA	American Airlines, Inc. Post-Petition (DIP)
CO	Continental Airlines
DL	Delta Airlines
XE	Express Jet Airlines, Inc. (UA Express)
F9	Frontier Airlines
G7	GoJet Airlines dba United Express
B6	JetBlue Airways Corp.
YV	Mesa Airlines Inc – DIP (US Airways & UA Express)
S5	Shuttle America Corp. (UA Express)
OO	Sky West Airlines, Inc. (UA Express)
WN	Southwest Airlines
SY	Sun Country Airlines/MN Airlines, LLC
UA	United Airlines, Inc.
US	US Airways Group, Inc.

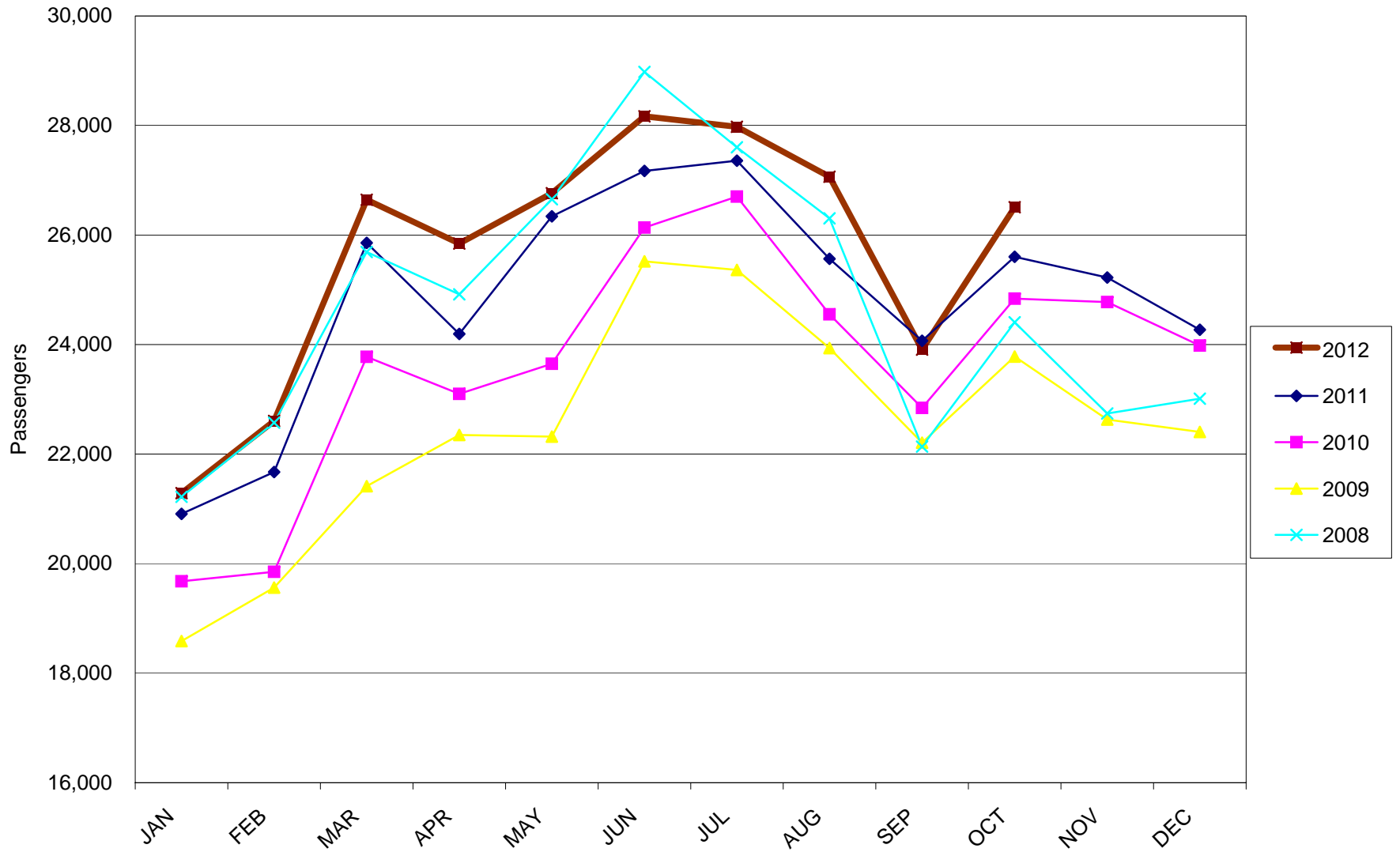
AUSTIN PASSENGER TRAFFIC
Calendar Year 2012 vs 2011



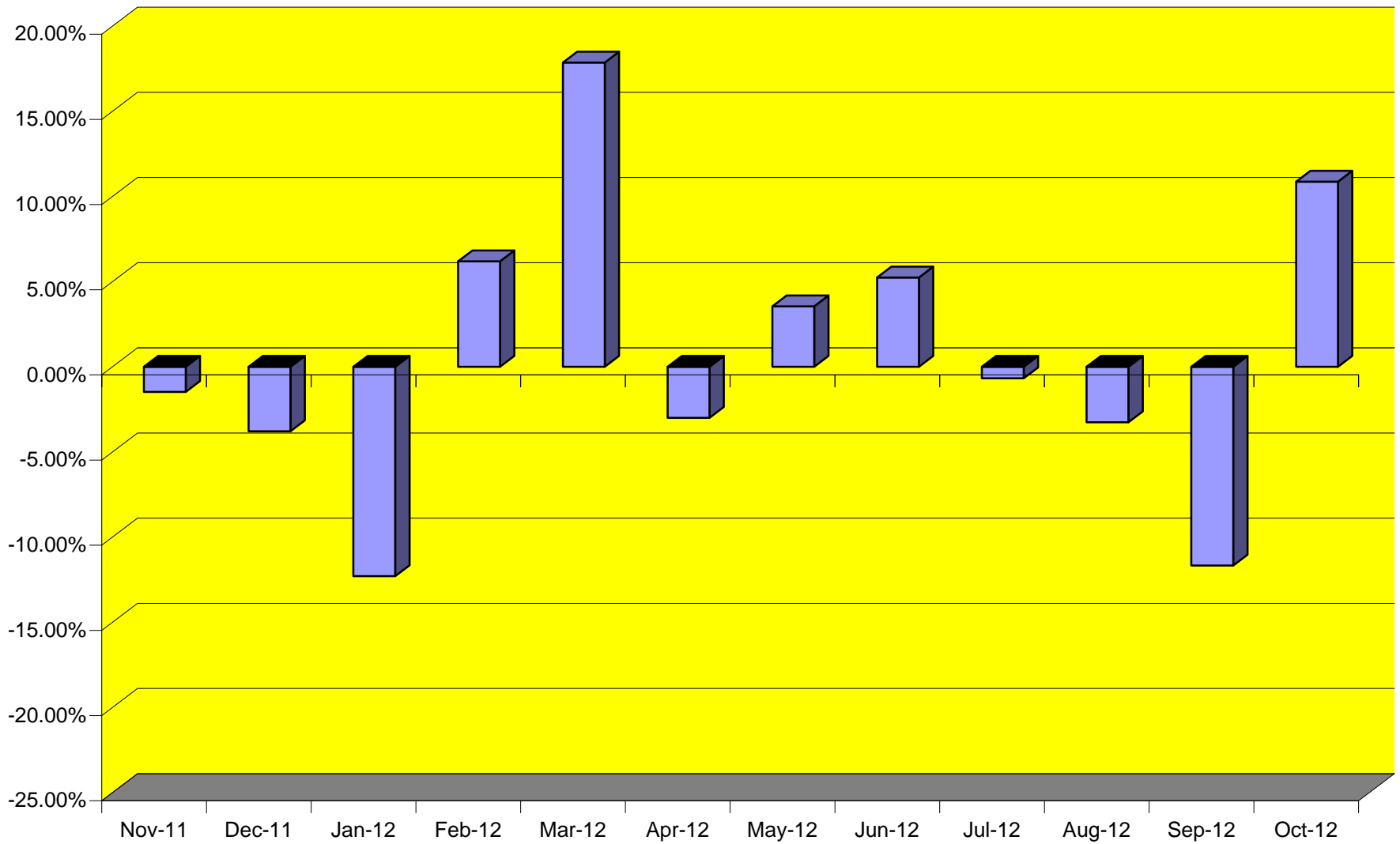
TOTAL CARGO POUNDAGE - AUSTIN, TEXAS



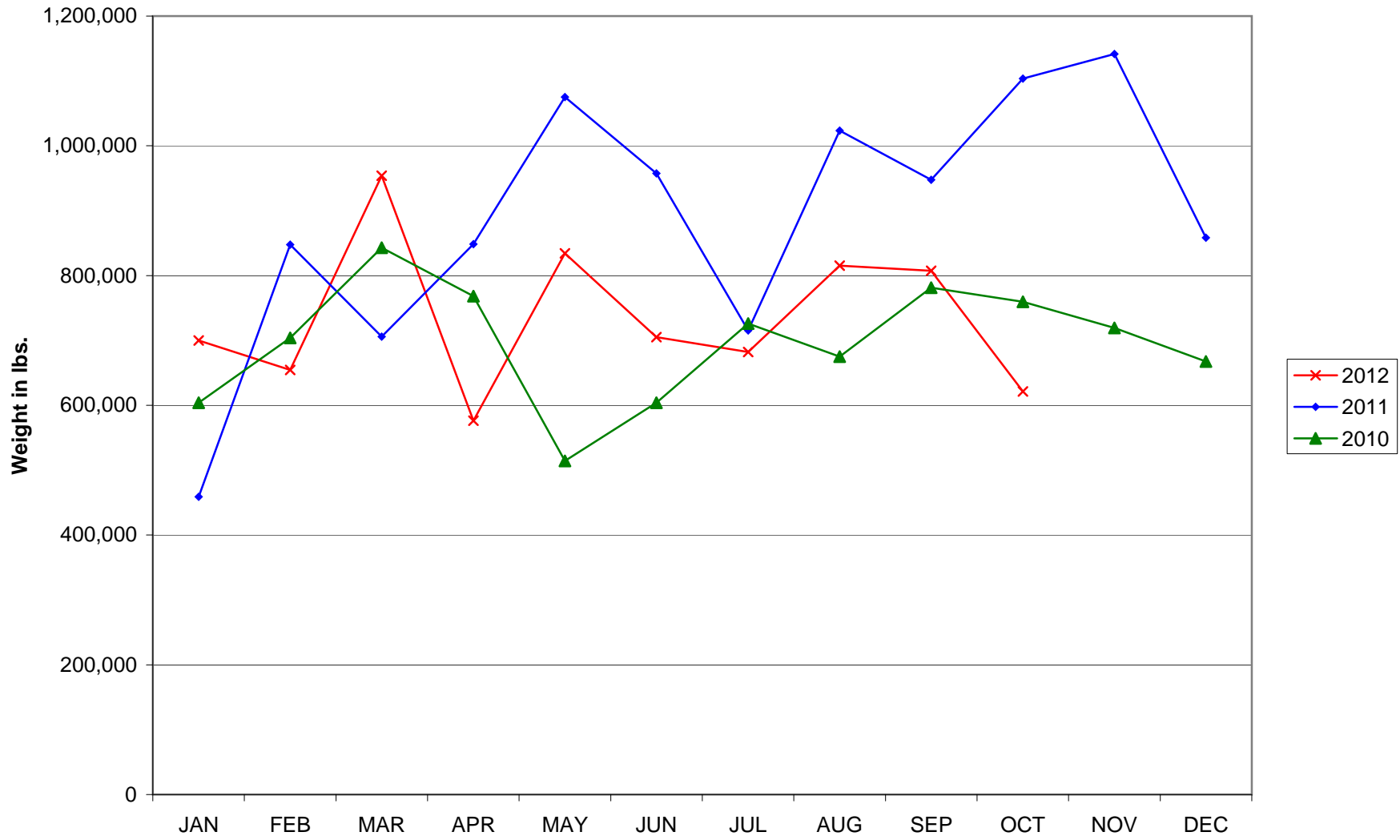
Average Daily Passengers



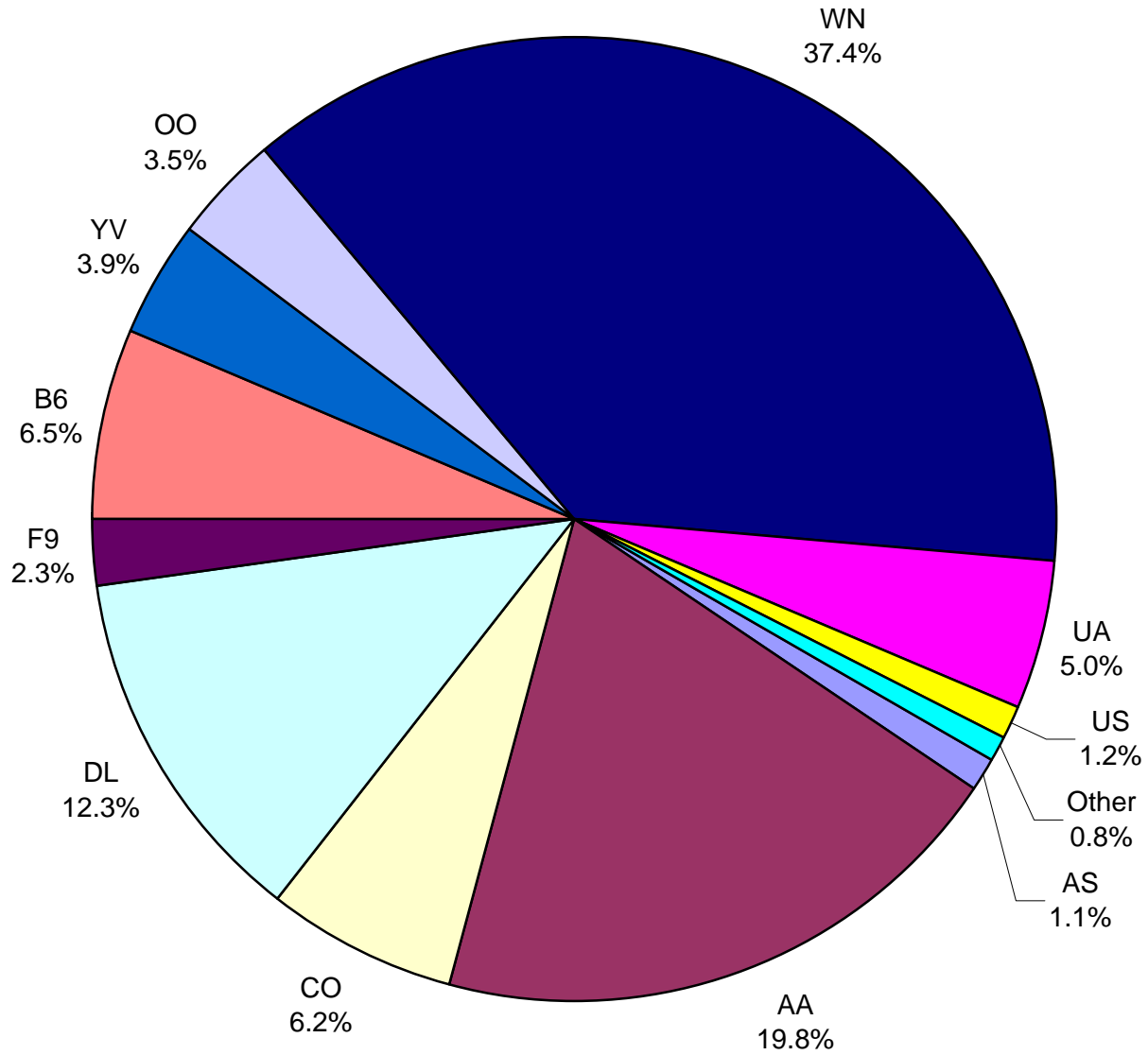
Monthly % Change in Average Daily Passengers



History of International Air Cargo



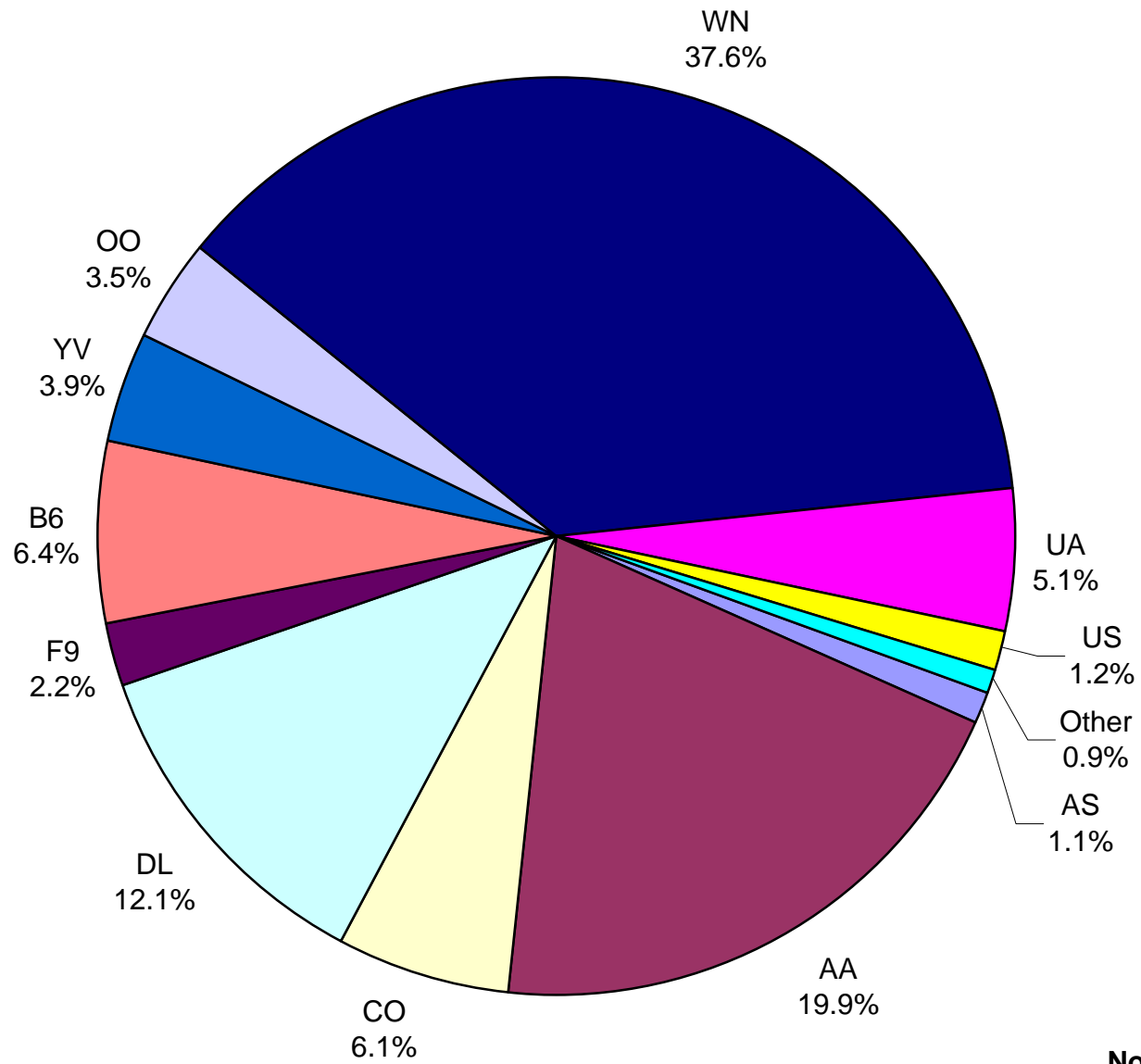
**Total Passengers
October 2012**



Other = Allegiant Air, ExpressJet, Shuttle America and Sun Country

Note: United Airlines percentage includes sub-contractors.

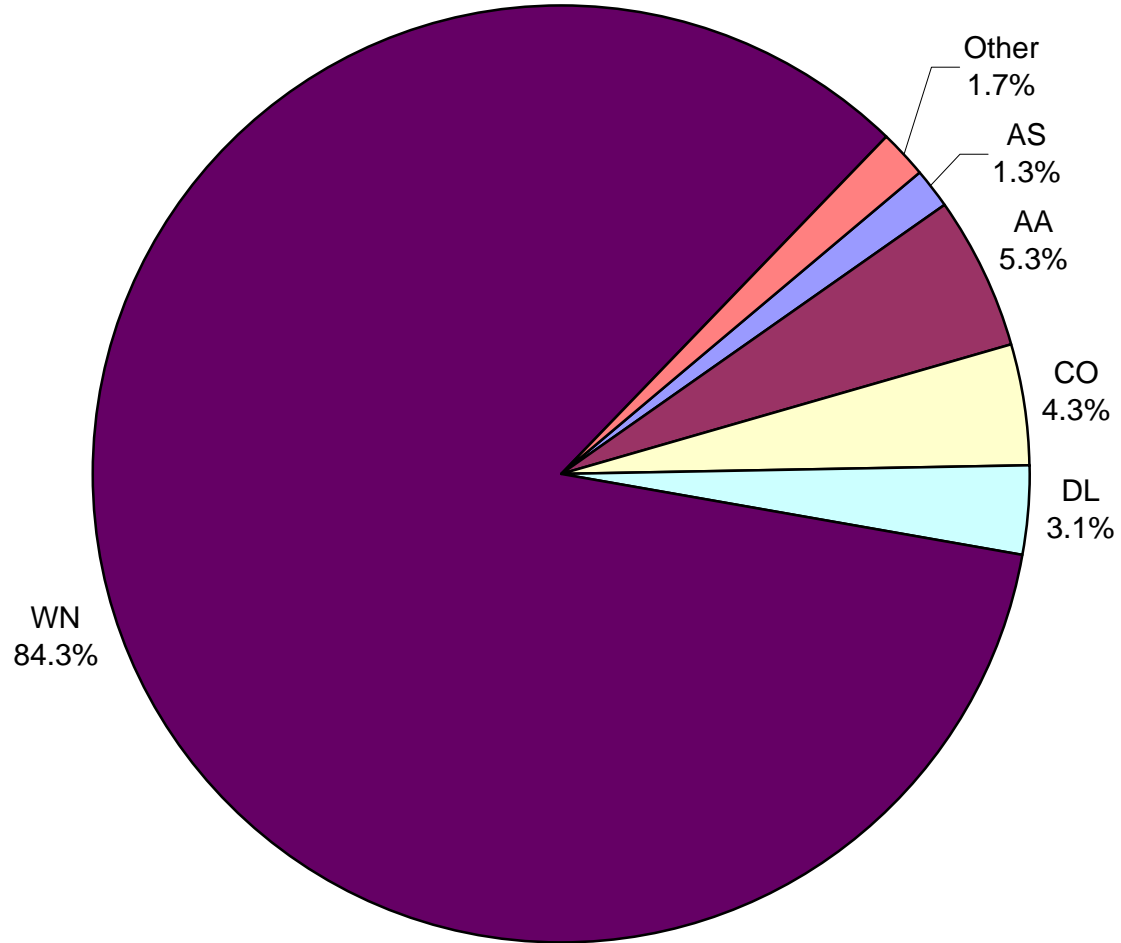
**All Passenger Carriers
Enplaned Revenue Passengers
October 2012**



Other = Allegiant Air, ExpressJet, Shuttle America and Sun Country

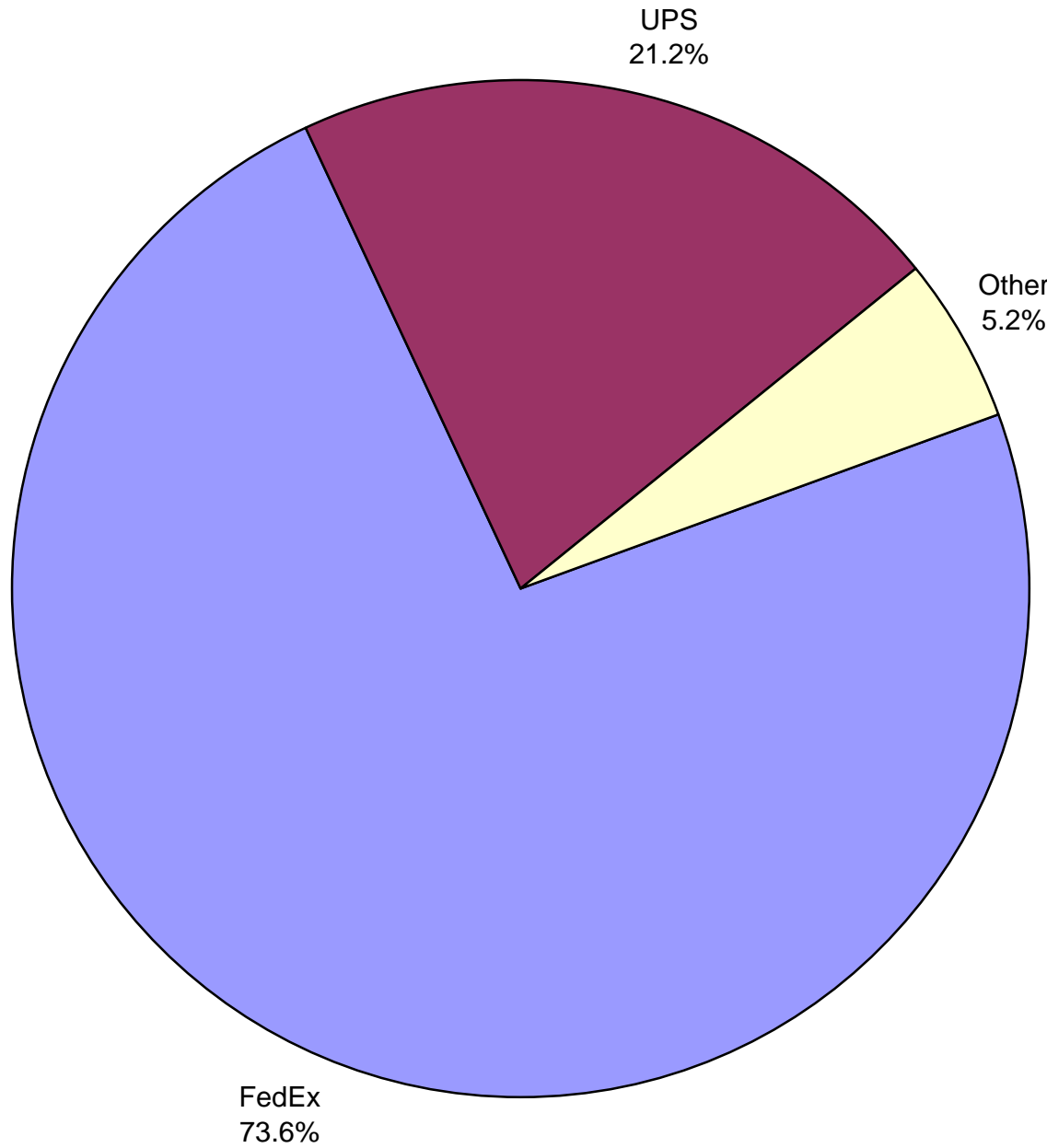
Note: United Airlines percentage includes sub-contractors.

**AUS Belly Freight Market Shares
October 2012**



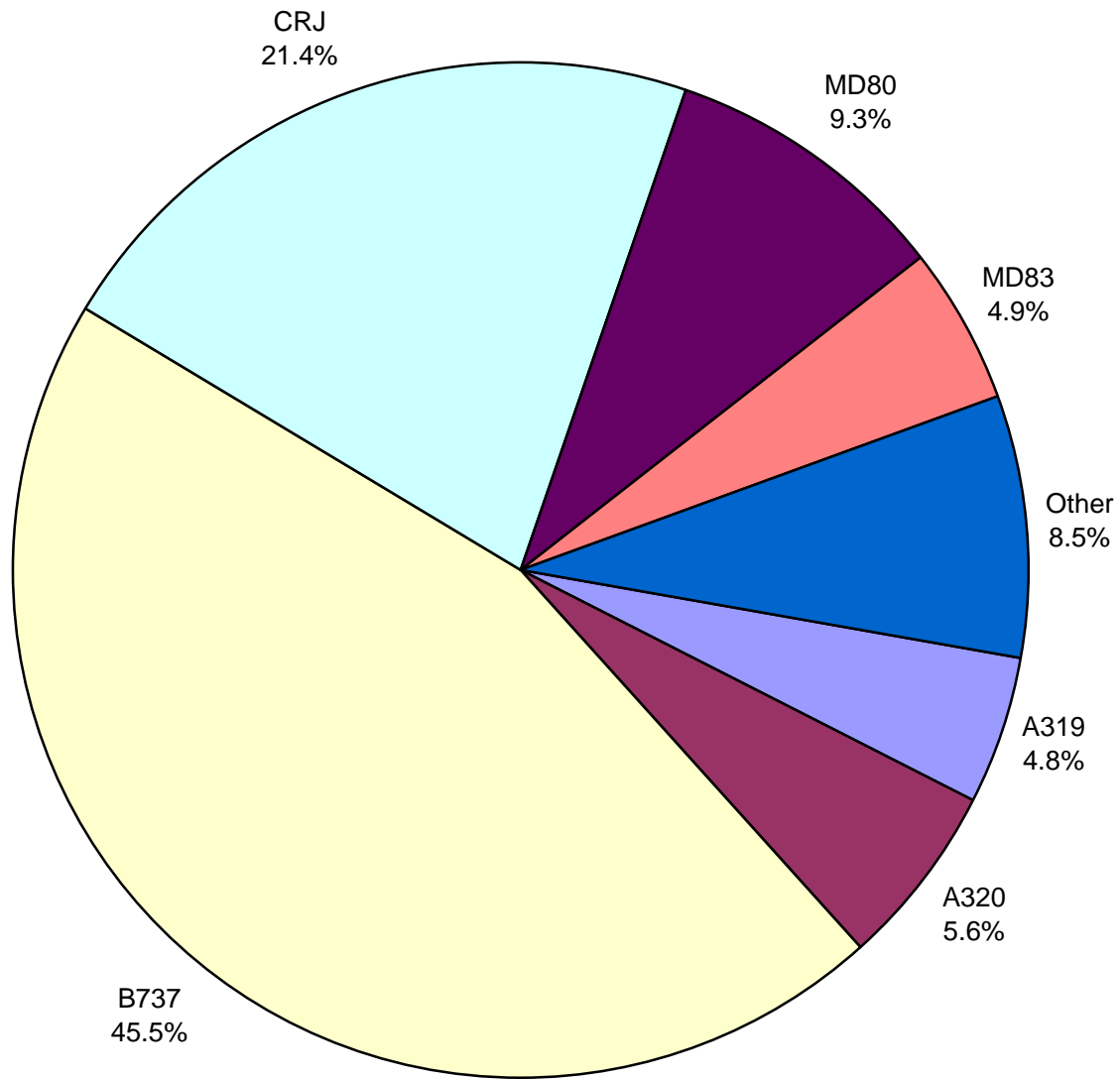
Other = Express Jet Airlines, Frontier Airlines, JetBlue Airways, Mesa Airlines, United Airlines and US Airways

**Air Cargo Market Shares
October 2012**



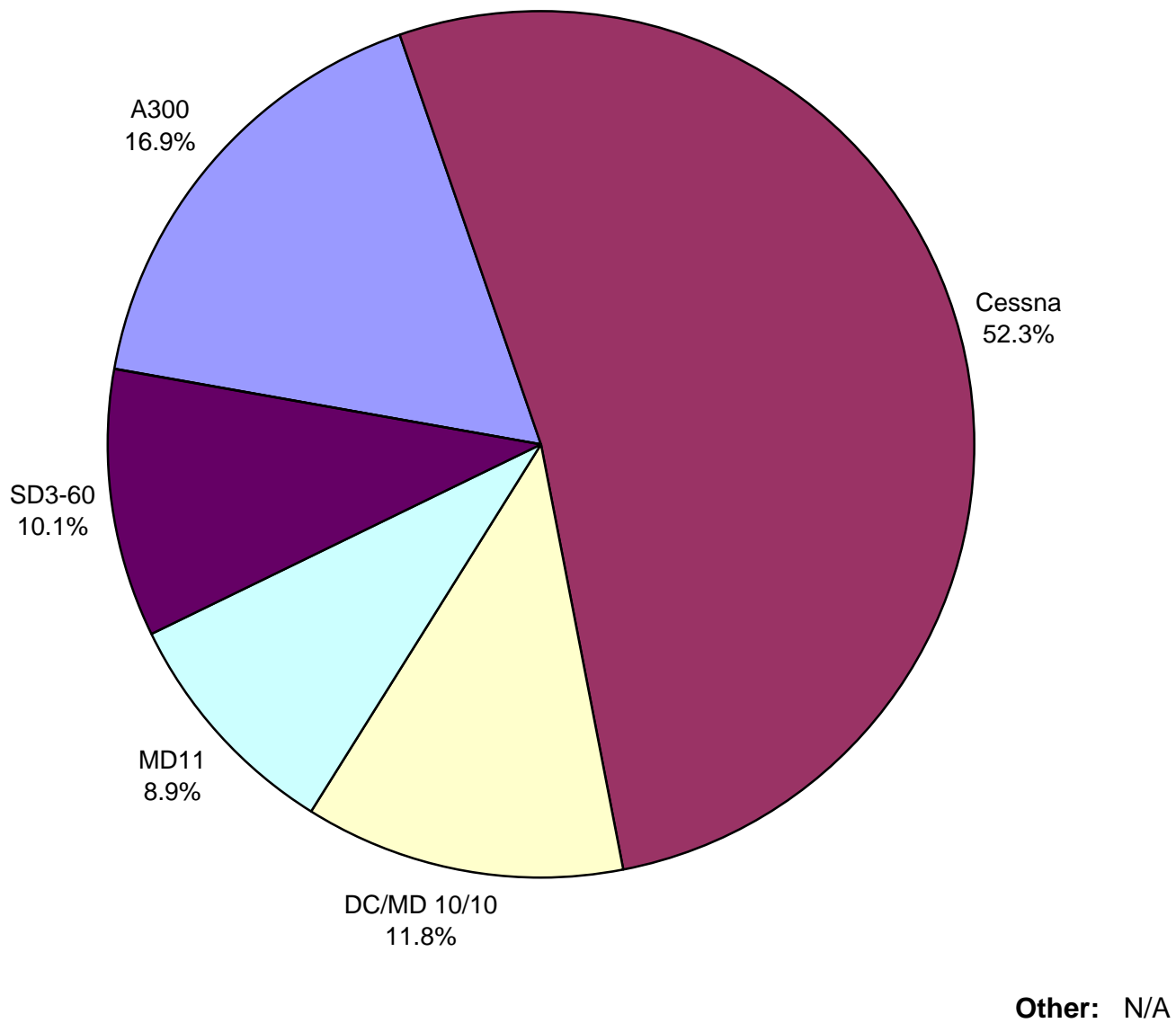
Other: Air Cargo Carriers
and Baron Aviation

**AUS Scheduled Passenger Aircraft Fleet Mix
October 2012**



Other: B757, A318,
ERJ, MD-82, MD-87, MD-
90, EMB

**AUS Scheduled Cargo Aircraft Fleet Mix
October 2012**



Austin-Bergstrom International Airport

PAX Detail Report - October, 2012

Company	10/2012	10/2011	Period		YTD 2012	YTD 2011	YTD		2012 Share	2011 Share	Share Diff
			Difference	Change			Difference	Change			
Alaska Airlines, Inc.	9,360	9,636	-276	-2.9	94,514	136,042	-41,528	-30.5	1.2	1.8	-0.6
Allegiant Air	350	223	127	57.0	2,440	3,148	-708	-22.5	0.0	0.0	0.0
American Airlines, Inc - Pre-Petition	0	171,200	-171,200	-100.0	0	1,564,518	-1,564,518	-100.0	0.0	20.7	-20.7
American Airlines, Inc. - Post-Petition (DIP)	162,855	0	162,855	0.0	1,573,084	0	1,573,084	0.0	20.1	0.0	20.1
Casino Express Airways	0	0	0	0.0	0	345	-345	-100.0	0.0	0.0	0.0
Continental Airlines	50,713	75,585	-24,872	-32.9	576,266	702,658	-126,392	-18.0	7.4	9.3	-1.9
Delta Air Lines	100,770	90,331	10,439	11.6	947,921	869,634	78,287	9.0	12.1	11.5	0.6
Express Jet Airlines, Inc.	3,491	3,668	-177	-4.8	32,699	33,439	-740	-2.2	0.4	0.4	0.0
Frontier Airlines, Inc.	18,713	20,515	-1,802	-8.8	170,928	205,512	-34,584	-16.8	2.2	2.7	-0.5
GoJet Airlines d/b/a United Express	13,302	9,753	3,549	36.4	124,251	119,857	4,394	3.7	1.6	1.6	0.0
JetBlue Airways Corporation	53,243	52,746	497	0.9	488,618	457,844	30,774	6.7	6.2	6.0	0.2
Mesa Airlines Inc - DIP	31,833	31,236	597	1.9	320,647	339,101	-18,454	-5.4	4.1	4.5	-0.4
Shuttle America Corporation	3,019	6,715	-3,696	-55.0	38,885	34,384	4,501	13.1	0.5	0.5	0.0
SkyWest Airlines, Inc	28,849	29,055	-206	-0.7	324,216	241,408	82,808	34.3	4.1	3.2	0.9
Southwest Airlines	307,420	287,667	19,753	6.9	2,966,516	2,769,059	197,457	7.1	37.9	36.6	1.3
Sun Country Airlines/ MN Airlines, LLC	208	0	208	0.0	554	3,966	-3,412	-86.0	0.0	0.1	0.0
United Airlines, Inc.	28,018	5,064	22,954	453.3	155,769	89,116	66,653	74.8	2.0	1.2	0.8
US Airways Group, Inc.	9,817	0	9,817	0.0	18,255	245	18,010	7,351.0	0.2	0.0	0.2
Vision Airlines, Inc.	0	246	-246	-100.0	1,251	1,534	-283	-18.4	0.0	0.0	0.0
Report Totals	821,961	793,640	28,321	3.6%	7,836,817	7,571,810	265,007	3.5%			

Statistics Included in Report:

Domestic Passengers:

International Passengers:

Enplaned Revenue, Deplaned Revenue, Enplaned Non-Revenue, Deplaned Non-Revenue

Enplaned Revenue, Deplaned Revenue, Enplaned Non-Revenue, Deplaned Non-Revenue, South Terminal-Intl Enplaned Revenue, South Terminal-Intl Deplaned Revenue, South Terminal-Intl Enplaned Non-Revenue, South Terminal-Intl Deplaned Non-Revenue.

Austin-Bergstrom International Airport

Summary Landing Report

Landing Type: Total

Month	2012		2011		2010		% Change 2012 - 2011		% Change 2011 - 2010	
	Count	Weight	Count	Weight	Count	Weight	Count	Weight	Count	Weight
January	4,033	441,029,354	4,214	463,934,037	4,067	445,767,645	-4.30%	-4.94%	3.61%	4.08%
February	3,892	432,535,353	3,776	417,430,253	3,630	393,369,172	3.07%	3.62%	4.02%	6.12%
March	4,372	496,635,886	4,539	498,238,970	4,244	463,954,520	-3.68%	-0.32%	6.95%	7.39%
April	4,260	479,535,174	4,274	479,035,366	4,102	451,246,077	-0.33%	0.10%	4.19%	6.16%
May	4,385	509,470,460	4,564	500,806,412	4,196	469,770,550	-3.92%	1.73%	8.77%	6.61%
June	4,425	503,932,220	4,378	490,983,485	4,307	476,579,536	1.07%	2.64%	1.65%	3.02%
July	4,586	524,142,423	4,499	504,634,624	4,486	495,298,076	1.93%	3.87%	0.29%	1.89%
August	4,532	519,056,485	4,415	499,285,697	4,424	489,257,495	2.65%	3.96%	-0.20%	2.05%
September	4,181	484,324,879	4,226	477,495,780	4,170	469,754,555	-1.06%	1.43%	1.34%	1.65%
October	4,424	512,451,397	4,309	490,427,499	4,294	481,126,231	2.67%	4.49%	0.35%	1.93%
November			4,078	460,449,178	4,168	463,039,099			-2.16%	-0.56%
December			4,234	473,997,984	4,347	483,287,895			-2.60%	-1.92%
Totals for Selected Period	43,090	4,903,113,631	43,194	4,822,272,123	41,920	4,636,123,857	-0.24%	1.68%	3.04%	4.02%
Yearly Totals	43,090	4,903,113,631	51,506	5,756,719,285	50,435	5,582,450,851			2.12%	3.12%