

# Austin-Bergstrom International Airport

## Aviation Activity Report

### Calendar Year 2012 vs 2011

	08/2012	08/2011	Percent Change	01/2012 - 08/2012	01/2011 - 08/2011	Percent Change
<b><u>Passenger Activity</u></b>						
Domestic Enplaned Revenue	395,351	374,464	5.58	3,059,999	2,941,815	4.02
Domestic Deplaned Revenue	417,753	394,488	5.90	3,067,731	2,943,719	4.21
International Enplaned Revenue	2,238	869	157.54	8,069	4,546	77.50
International Deplaned Revenue	2,790	645	332.56	8,460	4,553	85.81
Domestic Enplaned Non-Revenue	11,004	11,542	-4.66	79,979	83,669	-4.41
Domestic Deplaned Non-Revenue	9,846	10,448	-5.76	73,394	77,708	-5.55
International Enplaned Non-Revenue	0	4	-100.00	0	34	-100.00
International Deplaned Non-Revenue	12	25	-52.00	12	31	-61.29
South Terminal-Intl Enplaned Revenue	0	0	0.00	0	0	0.00
South Terminal-Intl Deplaned Revenue	0	0	0.00	0	0	0.00
South Terminal-Intl Enplaned Non-Revenue	0	0	0.00	0	0	0.00
South Terminal-Intl Deplaned Non-Revenue	0	0	0.00	0	0	0.00
Passenger Totals	838,994	792,485	5.87	6,297,644	6,056,075	3.99

**CURRENT PASSENGER RECORD = 869,308**

**RECORD SET = JUNE 2008**

#### **Aircraft Operations**

Air Carrier	8,557	8,260	3.60	65,176	63,834	2.10
Commuter & Air Taxi	1,243	1,413	-12.03	10,392	11,972	-13.20
Military	513	651	-21.20	3,807	4,712	-19.21
General Aviation						
Itinerant	4,059	4,275	-5.05	32,643	36,863	-11.45
Local	108	235	-54.04	1,388	2,315	-40.04
Total G.A.	4,167	4,510	-7.61	34,031	39,178	-13.14
Total Operations	14,480	14,834	-2.39	113,406	119,696	-5.25

# Austin-Bergstrom International Airport

## Aviation Activity Report

### Calendar Year 2012 vs 2011

	08/2012	08/2011	Percent Change	01/2012 - 08/2012	01/2011 - 08/2011	Percent Change
<b><u>Cargo Activity</u></b>						
Mail						
Domestic Enplaned Mail	94,920	74,724	27.03	649,118	985,575	-34.14
Domestic Deplaned Mail	196,682	157,004	25.27	1,367,302	2,001,319	-31.68
International Enplaned Mail	0	0	0.00	0	0	0.00
International Deplaned Mail	0	0	0.00	0	0	0.00
South Terminal-Intl Enplaned Mail	0	0	0.00	0	0	0.00
South Terminal-Intl Deplaned Mail	0	0	0.00	0	0	0.00
Mail Totals	291,602	231,728	25.84	2,016,420	2,986,894	-32.49
Cargo						
Domestic Enplaned Cargo	5,660,536	5,236,748	8.09	41,205,983	41,634,024	-1.03
Domestic Deplaned Cargo	5,902,337	5,638,116	4.69	45,074,669	41,664,461	8.18
International Enplaned Cargo	383,370	530,922	-27.79	3,052,740	3,440,428	-11.27
International Deplaned Cargo	431,717	492,498	-12.34	2,868,147	3,192,506	-10.16
South Terminal-Intl Enplaned Cargo	0	0	0.00	0	0	0.00
South Terminal-Intl Deplaned Cargo	0	0	0.00	0	0	0.00
Cargo Totals	12,377,960	11,898,284	4.03	92,201,539	89,931,419	2.52
Belly Freight						
Domestic Enplaned Belly Freight	770,194	382,863	101.17	4,511,476	3,661,049	23.23
Domestic Deplaned Belly Freight	449,085	424,407	5.81	3,692,580	3,942,077	-6.33
International Enplaned Belly Freight	0	0	0.00	0	0	0.00
International Deplaned Belly Freight	0	0	0.00	0	0	0.00
South Terminal-Intl Enplaned Belly Frt	0	0	0.00	0	0	0.00
South Terminal-Intl Deplaned Belly Frt	0	0	0.00	0	0	0.00
Belly Freight Totals	1,219,279	807,270	51.04	8,204,056	7,603,126	7.90
Cargo Totals (Mail, Cargo, Belly Freight)	13,888,841	12,937,282	7.36	102,422,015	100,521,439	1.89

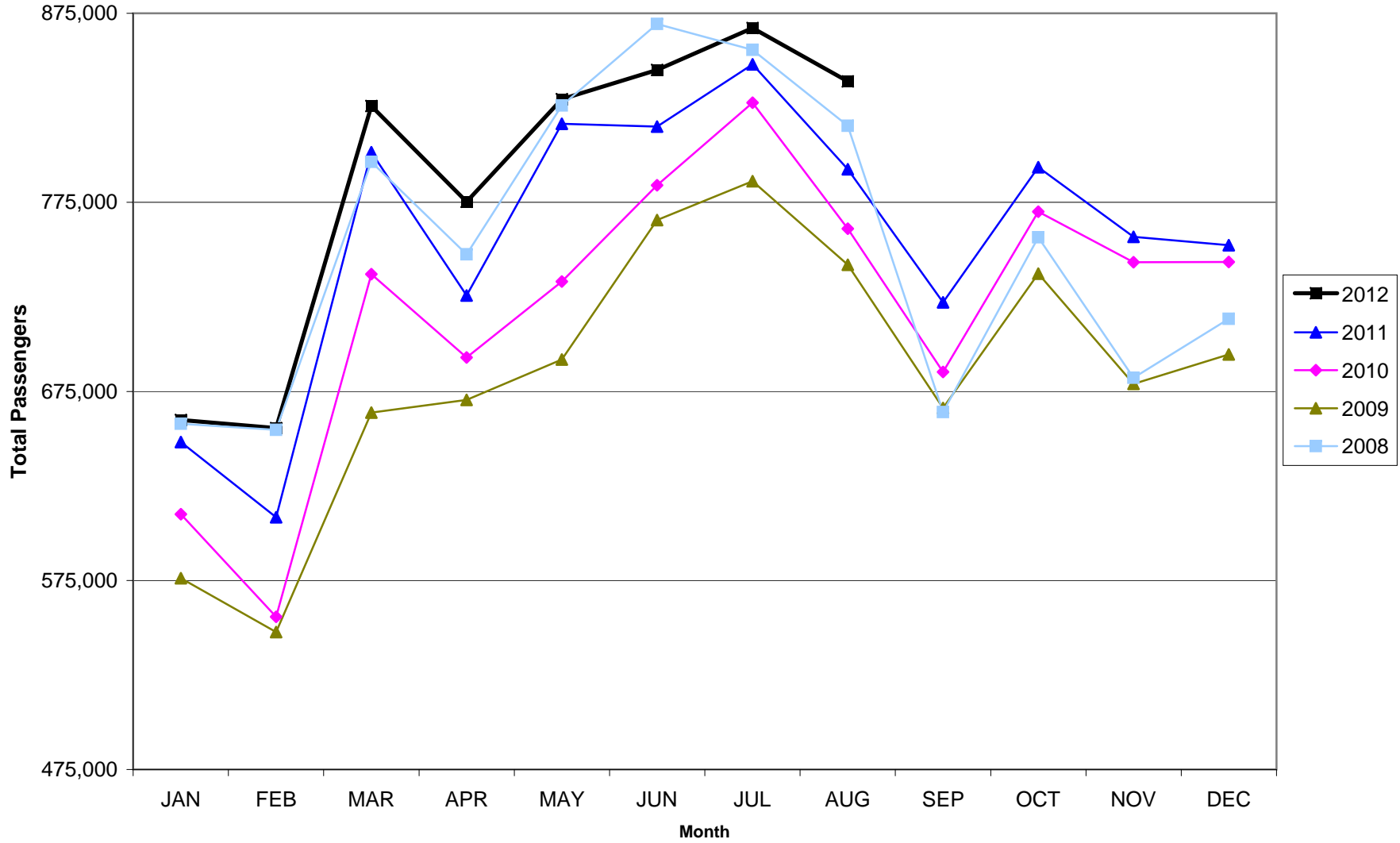
CURRENT CARGO RECORD = 40,215,518

RECORD SET = MARCH 2001

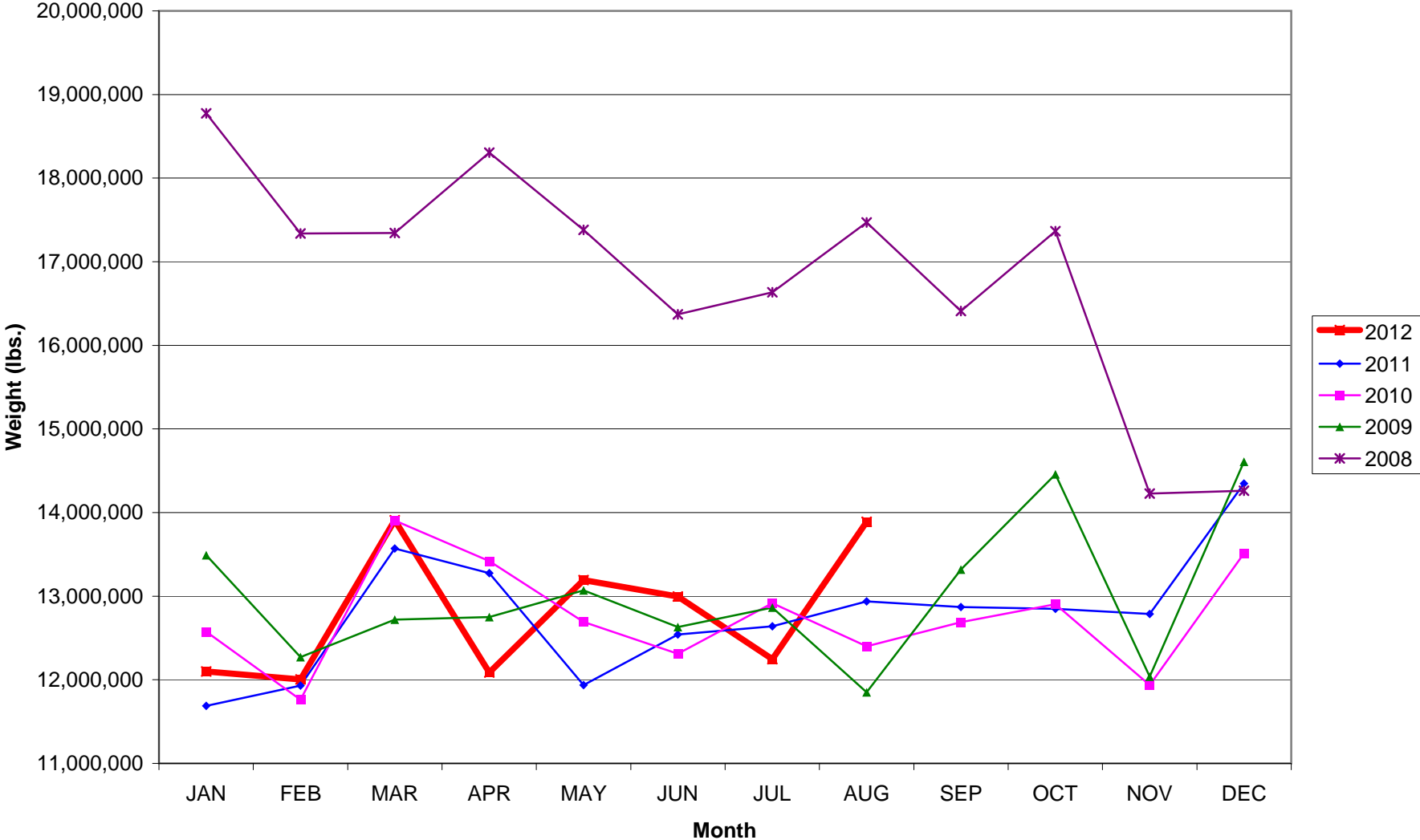
**AUS – Airline Codes**  
August 2012

<b><u>Code</u></b>	<b><u>Carrier</u></b>
AS	Alaska Airlines, Inc.
G4	Allegiant Air
AA	American Airlines, Inc. Post-Petition (DIP)
CO	Continental Airlines
DL	Delta Airlines
XE	Express Jet Airlines, Inc. (UA Express)
F9	Frontier Airlines
G7	GoJet Airlines dba United Express
B6	JetBlue Airways Corp.
YV	Mesa Airlines Inc – DIP (US Airways & UA Express)
S5	Shuttle America Corp. (UA Express)
OO	Sky West Airlines, Inc. (UA Express)
WN	Southwest Airlines
SY	Sun Country Airlines/MN Airlines, LLC
UA	United Airlines, Inc.

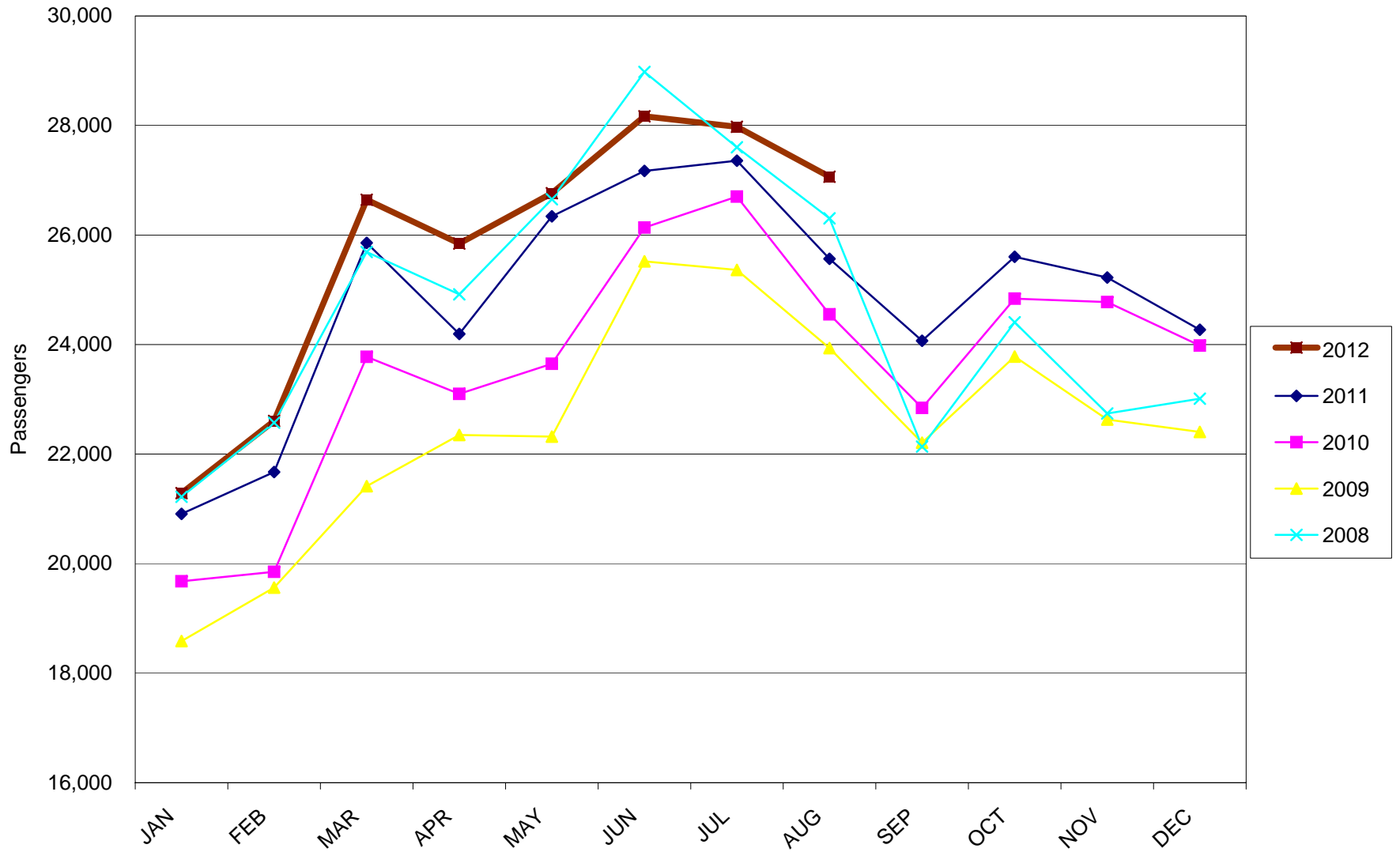
**AUSTIN PASSENGER TRAFFIC**  
**Calendar Year 2012 vs 2011**



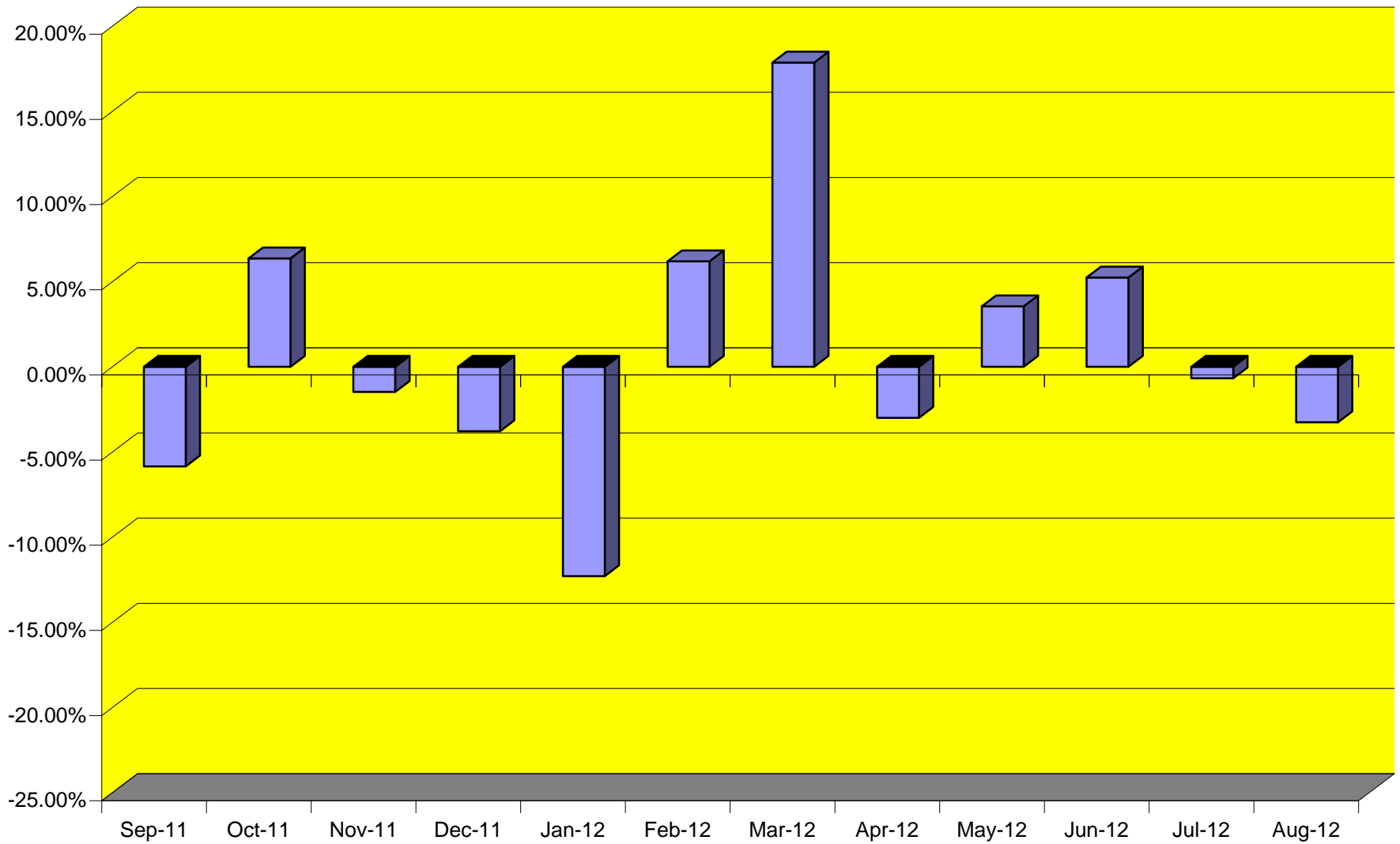
### TOTAL CARGO POUNDAGE - AUSTIN, TEXAS



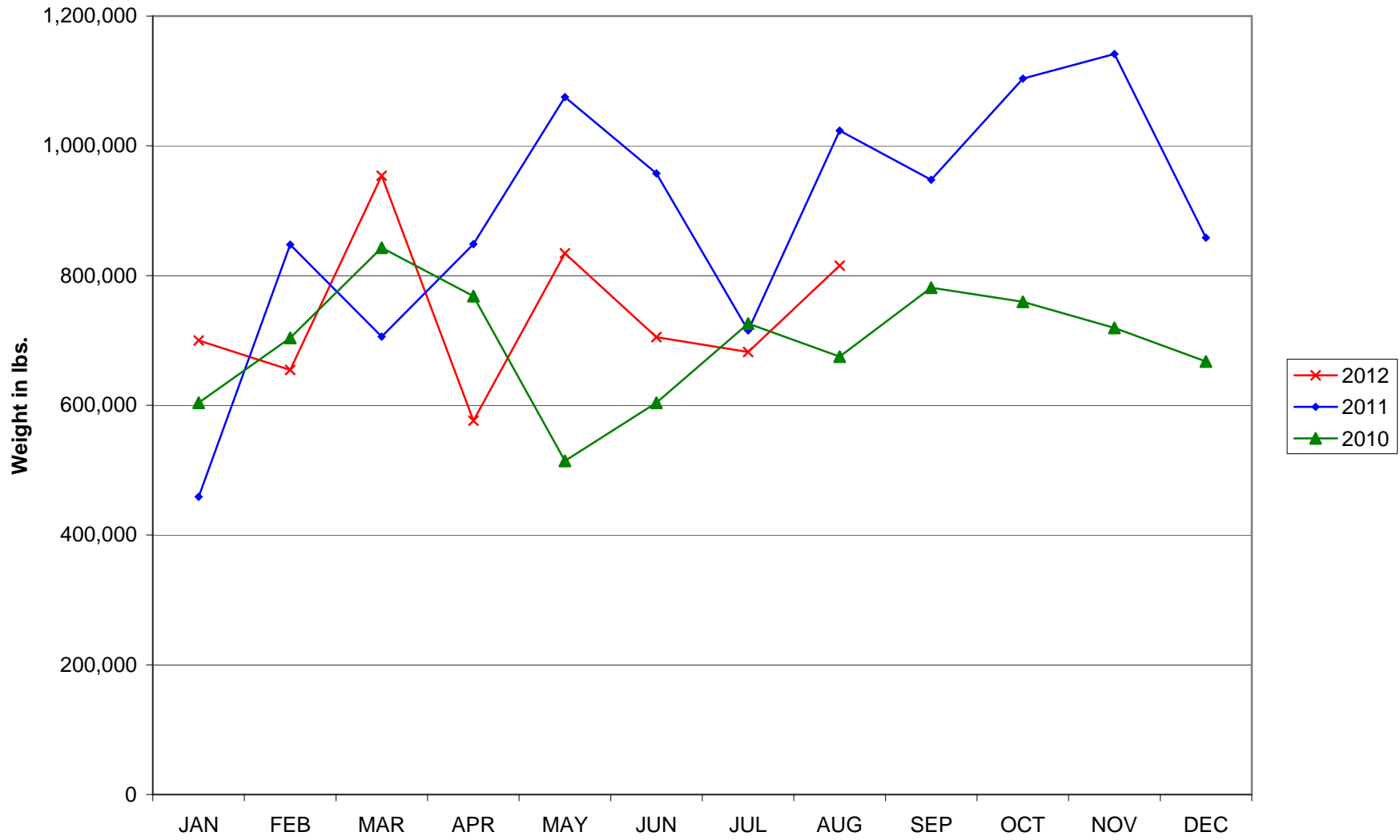
Average Daily Passengers



Monthly % Change in Average Daily Passengers

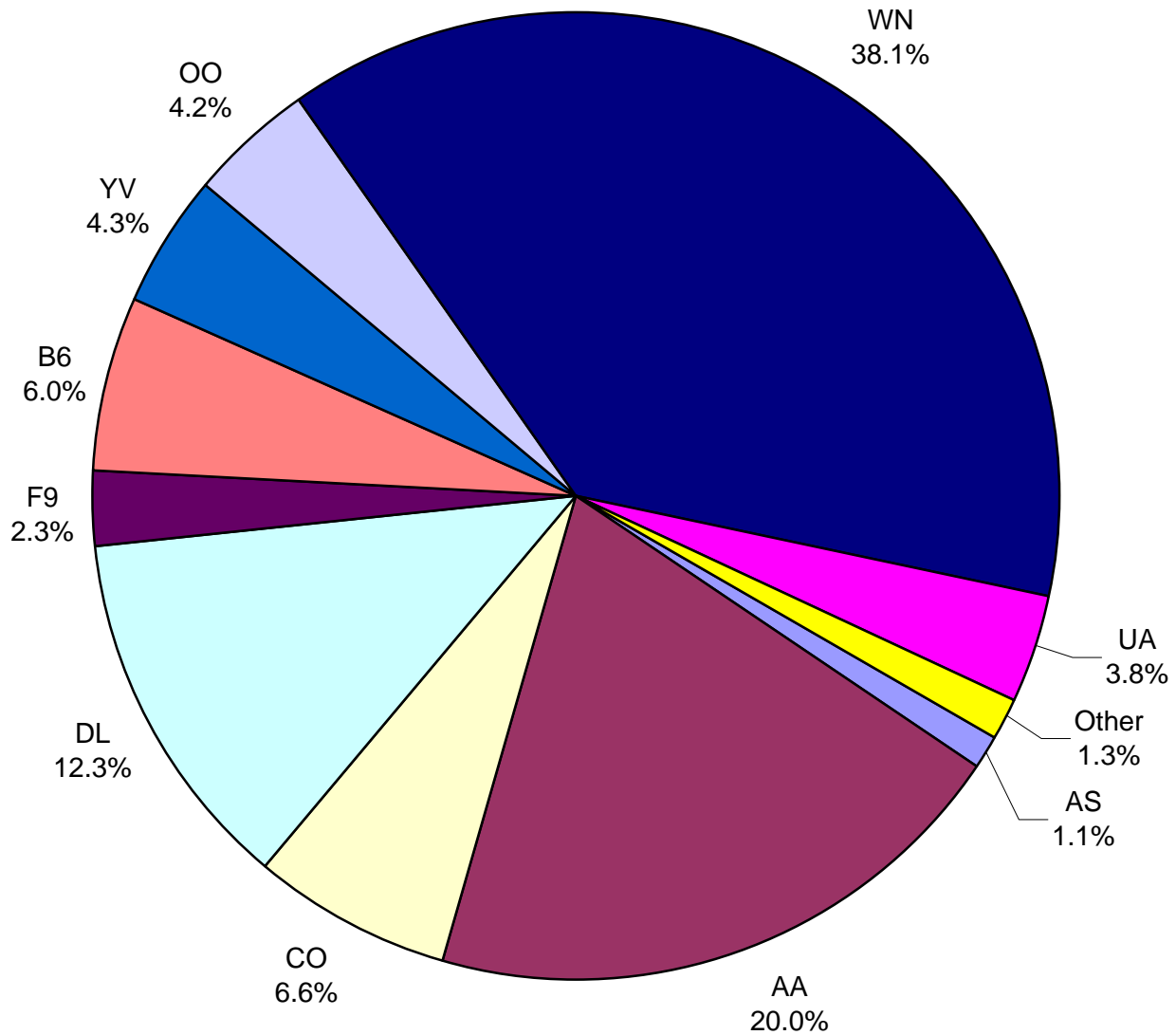


### History of International Air Cargo





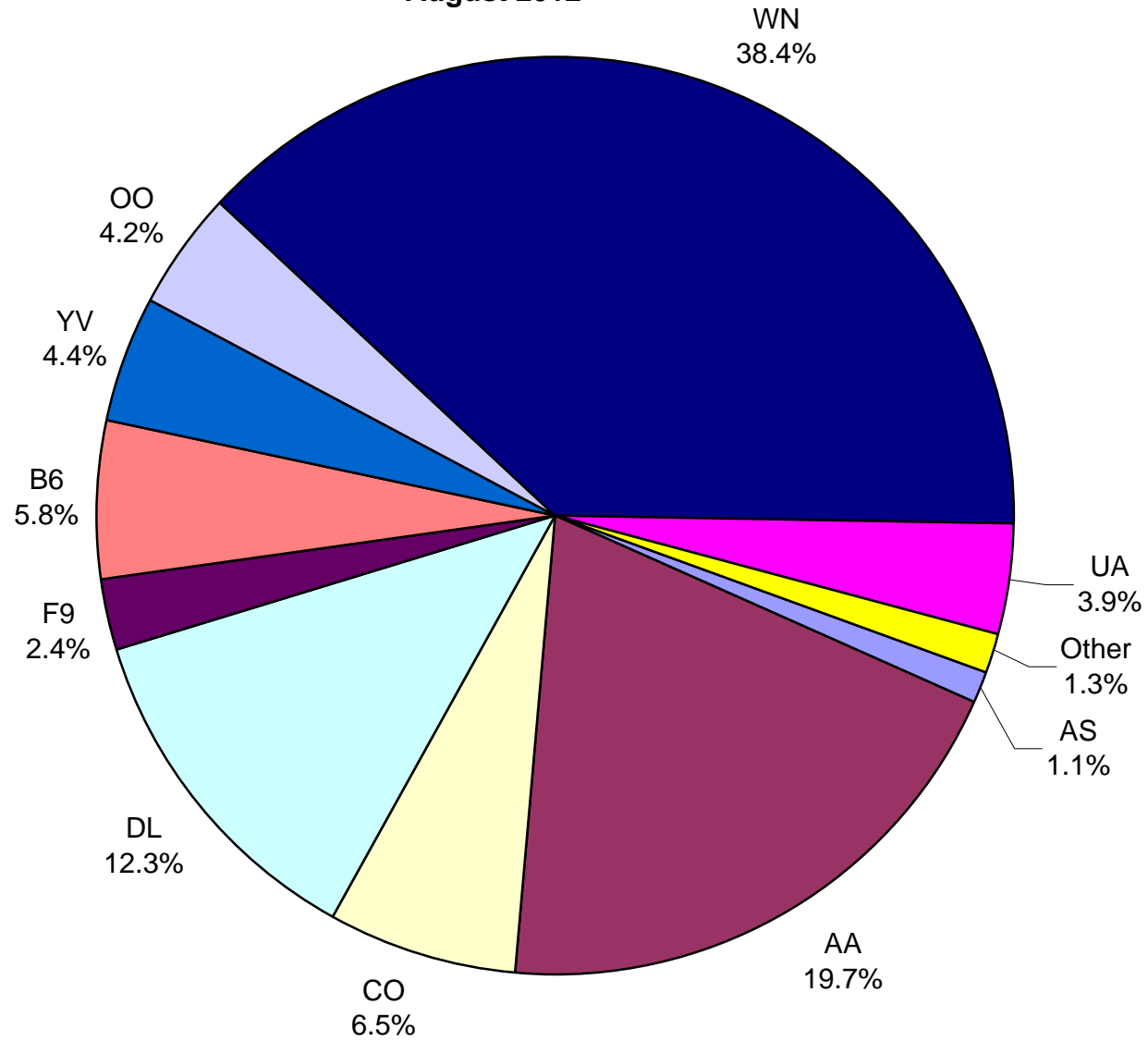
**Total Passengers  
August 2012**



**Other** = Allegiant Air, ExpressJet, Shuttle America and Sun Country

**Note:** United Airlines percentage includes sub-contractors.

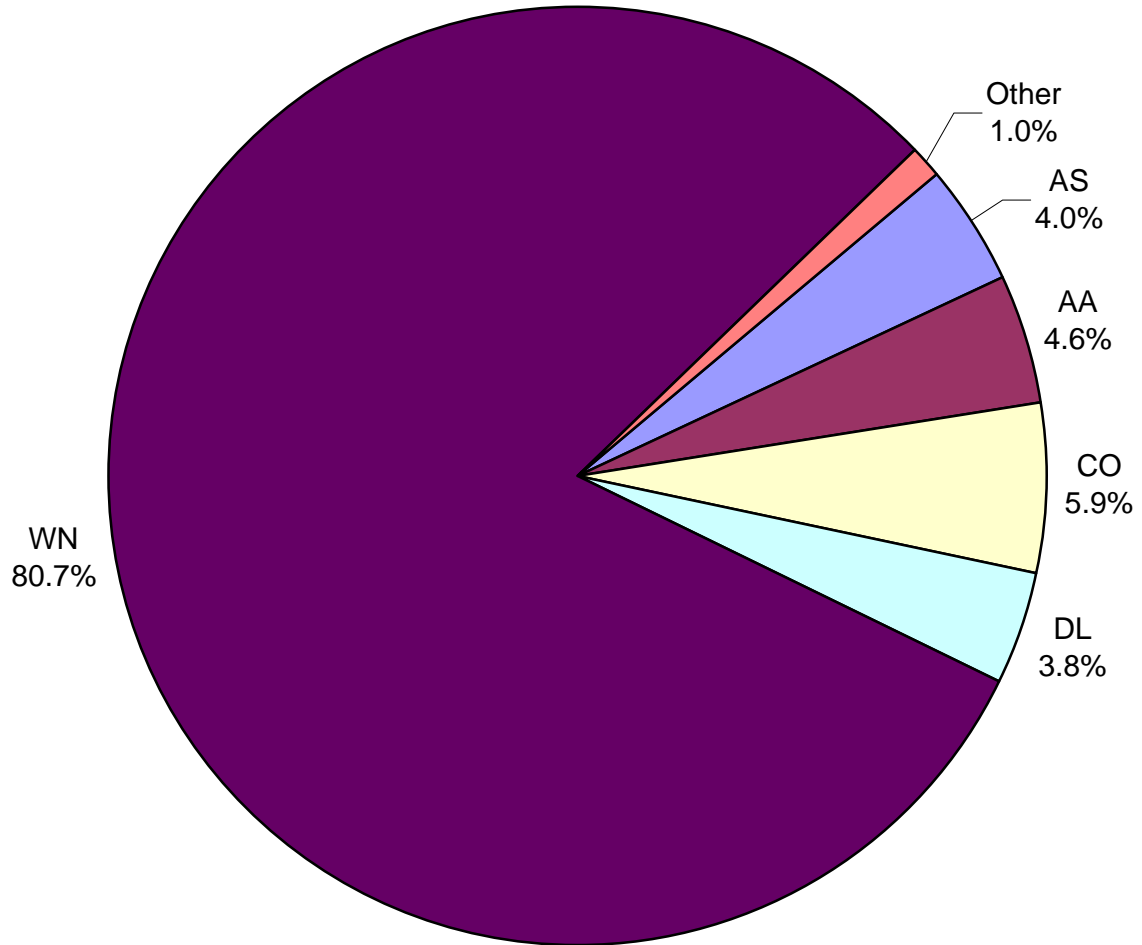
**All Passenger Carriers  
Enplaned Revenue Passengers  
August 2012**



**Other** = Allegiant Air, ExpressJet, Shuttle America, and Sun Country

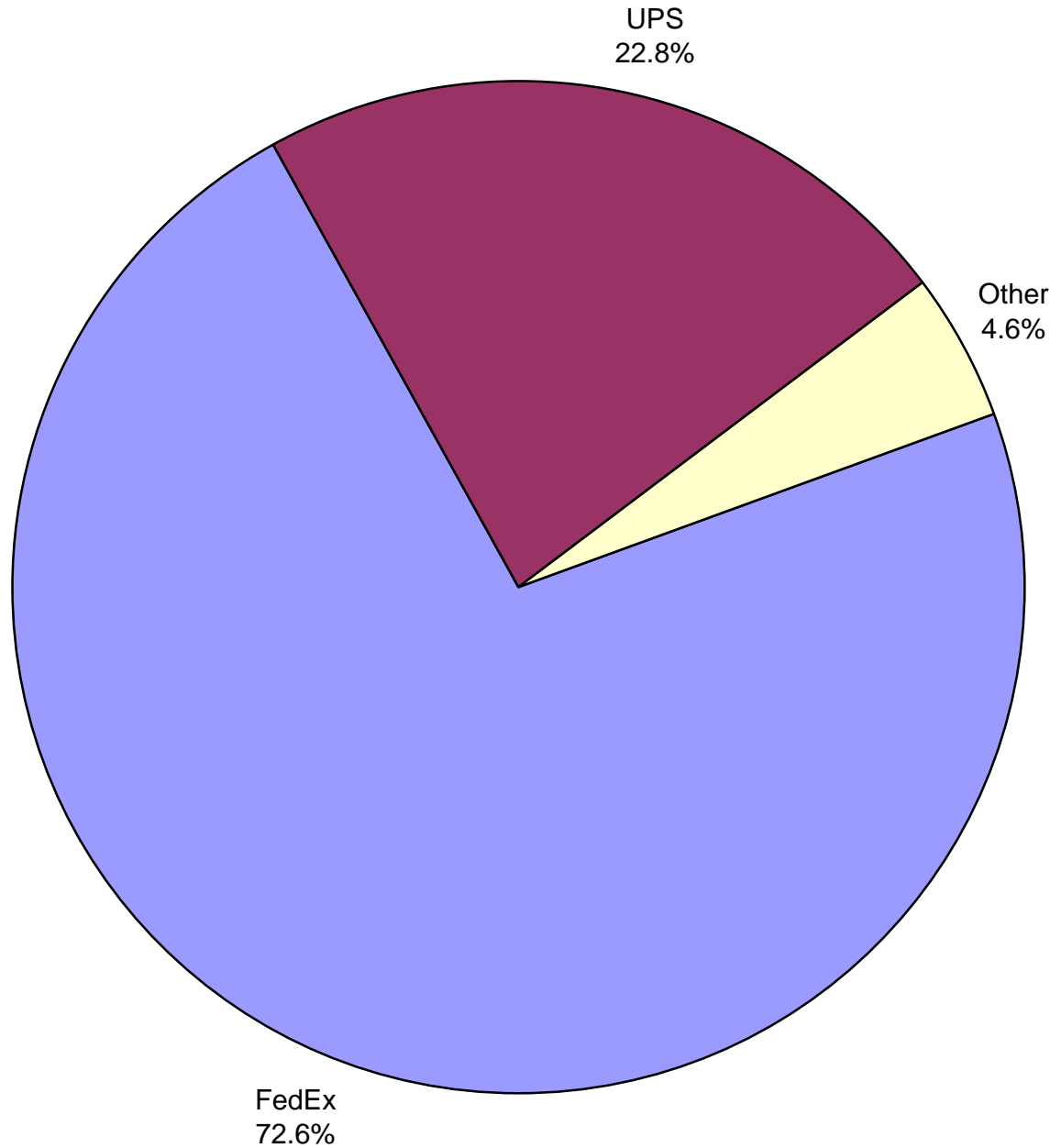
**Note:** United Airlines percentage includes sub-contractors.

**AUS Belly Freight Market Shares  
August 2012**



**Other** = Express Jet Airlines, Frontier Airlines, JetBlue Airways and United Airlines.

**Air Cargo Market Shares  
August 2012**



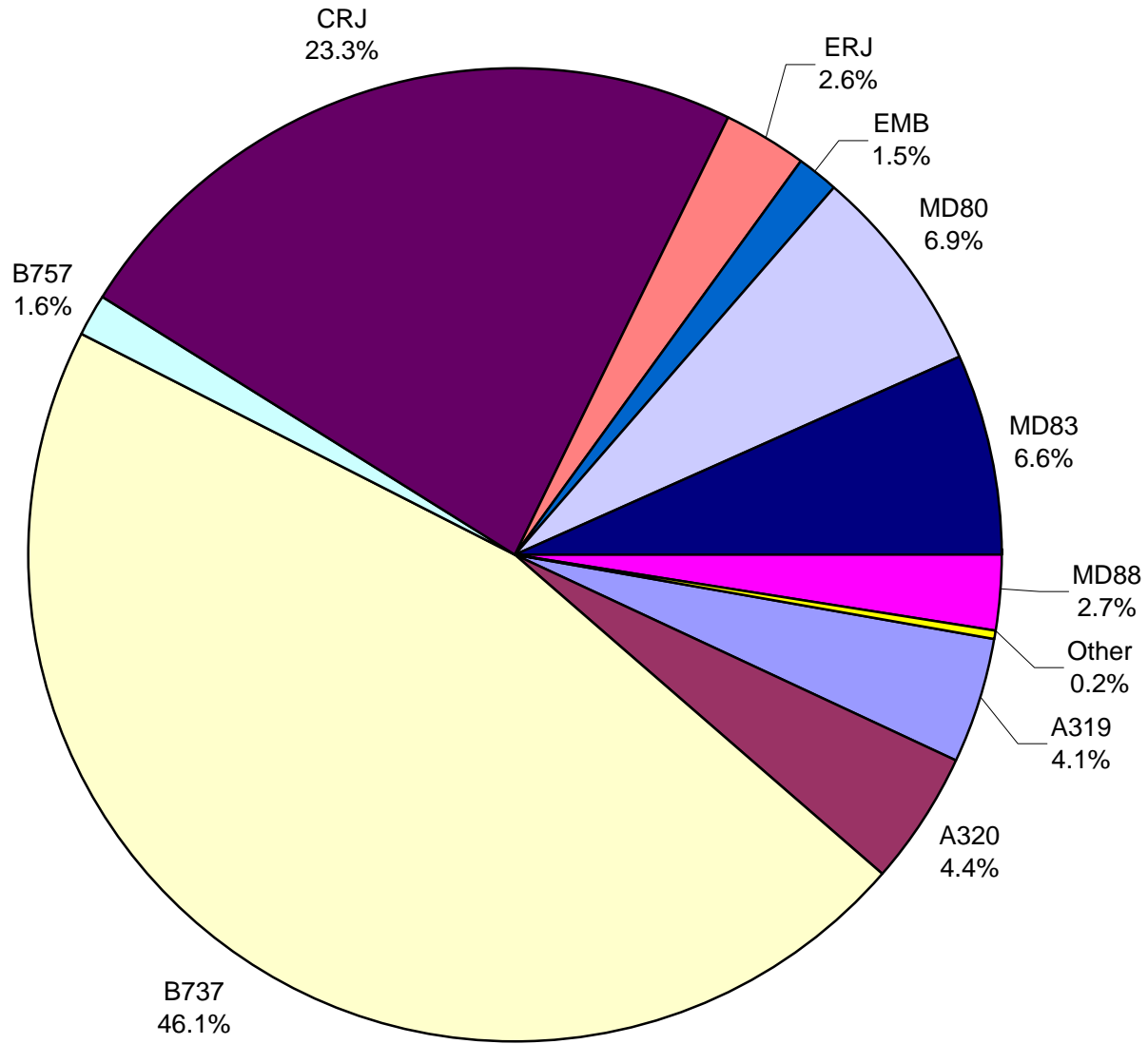
Other  
4.6%

FedEx  
72.6%

UPS  
22.8%

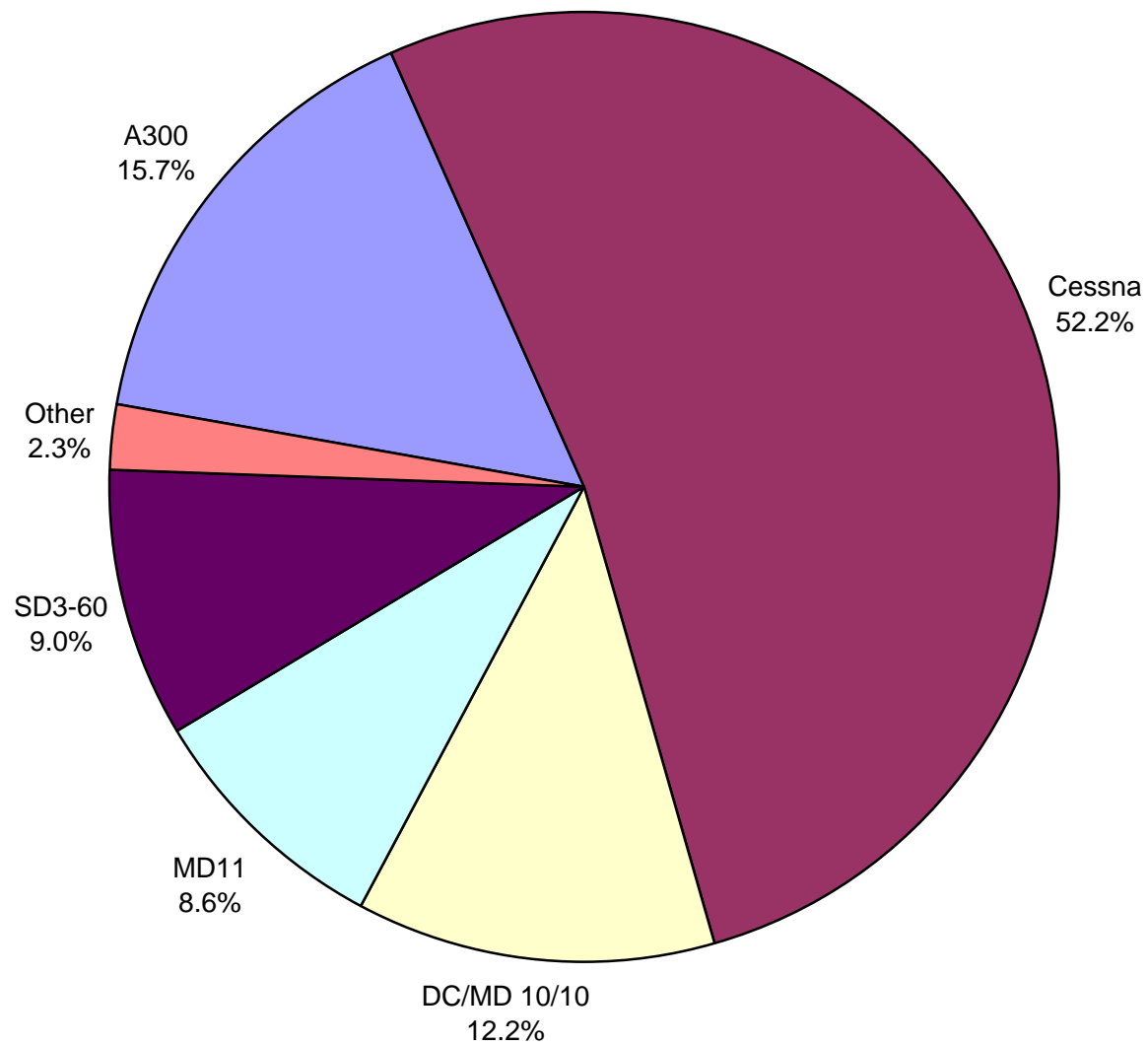
**Other:** Air Cargo Carriers, Baron Aviation and Martinaire Partners, L.P.

### AUS Scheduled Passenger Aircraft Fleet Mix August 2012



**Other:** A318, MD-82 and MD-90

**AUS Scheduled Cargo Aircraft Fleet Mix  
August 2012**



**Other:** B-727, B-757, B-767  
and DC/MD 10/30

# Austin-Bergstrom International Airport

## PAX Detail Report - August, 2012

Company	08/2012	08/2011	Period		YTD 2012	YTD 2011	YTD		2012 Share	2011 Share	Share Diff
			Difference	Change			Difference	Change			
Alaska Airlines, Inc.	9,526	10,087	-561	-5.6	76,451	117,066	-40,615	-34.7	1.2	1.9	-0.7
Allegiant Air	355	0	355	0.0	2,090	2,289	-199	-8.7	0.0	0.0	0.0
American Airlines, Inc - Pre-Petition	0	163,535	-163,535	-100.0	0	1,233,104	-1,233,104	-100.0	0.0	20.4	-20.4
American Airlines, Inc. - Post-Petition (DIP)	167,837	0	167,837	0.0	1,270,144	0	1,270,144	0.0	20.2	0.0	20.2
Ameristarjet Charter Inc.	0	0	0	0.0	2	0	2	0.0	0.0	0.0	0.0
Casino Express Airways	0	0	0	0.0	0	345	-345	-100.0	0.0	0.0	0.0
Continental Airlines	55,223	73,625	-18,402	-25.0	494,195	578,928	-84,733	-14.6	7.8	9.6	-1.7
Delta Air Lines	103,512	92,126	11,386	12.4	762,613	692,880	69,733	10.1	12.1	11.4	0.7
Express Jet Airlines, Inc.	6,465	3,733	2,732	73.2	27,288	28,928	-1,640	-5.7	0.4	0.5	0.0
Frontier Airlines, Inc.	19,649	24,630	-4,981	-20.2	135,161	162,823	-27,662	-17.0	2.1	2.7	-0.5
GoJet Airlines d/b/a United Express	14,359	12,178	2,181	17.9	97,833	100,838	-3,005	-3.0	1.6	1.7	-0.1
JetBlue Airways Corporation	50,224	51,550	-1,326	-2.6	390,435	357,333	33,102	9.3	6.2	5.9	0.3
Mesa Airlines Inc - DIP	36,070	34,032	2,038	6.0	262,092	277,506	-15,414	-5.6	4.2	4.6	-0.4
Shuttle America Corporation	3,554	1,433	2,121	148.0	30,664	20,780	9,884	47.6	0.5	0.3	0.1
SkyWest Airlines, Inc	35,292	29,710	5,582	18.8	263,676	181,295	82,381	45.4	4.2	3.0	1.2
Southwest Airlines	319,549	283,092	36,457	12.9	2,388,812	2,217,557	171,255	7.7	37.9	36.6	1.3
Sun Country Airlines/ MN Airlines, LLC	186	692	-506	-73.1	346	3,966	-3,620	-91.3	0.0	0.1	-0.1
United Airlines, Inc.	17,193	11,936	5,257	44.0	94,832	79,025	15,807	20.0	1.5	1.3	0.2
US Airways Group, Inc.	0	0	0	0.0	0	245	-245	-100.0	0.0	0.0	0.0
US Marshall Service / JPATS	0	0	0	0.0	1	0	1	0.0	0.0	0.0	0.0
Vision Airlines, Inc.	0	126	-126	-100.0	1,009	1,167	-158	-13.5	0.0	0.0	0.0
<b>Report Totals</b>	<b>838,994</b>	<b>792,485</b>	<b>46,509</b>	<b>5.9%</b>	<b>6,297,644</b>	<b>6,056,075</b>	<b>241,569</b>	<b>4.0%</b>			

### Statistics Included in Report:

Domestic Passengers:

International Passengers:

Enplaned Revenue, Deplaned Revenue, Enplaned Non-Revenue, Deplaned Non-Revenue

Enplaned Revenue, Deplaned Revenue, Enplaned Non-Revenue, Deplaned Non-Revenue, South Terminal-Intl Enplaned Revenue, South Terminal-Intl Deplaned Revenue, South Terminal-Intl Enplaned Non-Revenue, South Terminal-Intl Deplaned Non-Revenue.

# Austin-Bergstrom International Airport

## Summary Landing Report

### Landing Type: Total

Month	2012		2011		2010		% Change 2012 - 2011		% Change 2011 - 2010	
	Count	Weight	Count	Weight	Count	Weight	Count	Weight	Count	Weight
January	4,033	441,029,354	4,214	463,934,037	4,067	445,767,645	-4.30%	-4.94%	3.61%	4.08%
February	3,892	432,535,353	3,776	417,430,253	3,630	393,369,172	3.07%	3.62%	4.02%	6.12%
March	4,372	496,635,886	4,539	498,238,970	4,244	463,954,520	-3.68%	-0.32%	6.95%	7.39%
April	4,260	479,535,174	4,274	479,035,366	4,102	451,246,077	-0.33%	0.10%	4.19%	6.16%
May	4,385	509,470,460	4,564	500,806,412	4,196	469,770,550	-3.92%	1.73%	8.77%	6.61%
June	4,425	503,932,220	4,378	490,983,485	4,307	476,579,536	1.07%	2.64%	1.65%	3.02%
July	4,586	524,142,423	4,499	504,634,624	4,486	495,298,076	1.93%	3.87%	0.29%	1.89%
August	4,532	519,056,485	4,415	499,285,697	4,424	489,257,495	2.65%	3.96%	-0.20%	2.05%
September			4,226	477,495,780	4,170	469,754,555			1.34%	1.65%
October			4,309	490,427,499	4,294	481,126,231			0.35%	1.93%
November			4,078	460,449,178	4,168	463,039,099			-2.16%	-0.56%
December			4,234	473,997,984	4,347	483,287,895			-2.60%	-1.92%
<b>Totals for Selected Period</b>	34,485	3,906,337,355	34,659	3,854,348,844	33,456	3,685,243,071	-0.50%	1.35%	3.60%	4.59%
<b>Yearly Totals</b>	34,485	3,906,337,355	51,506	5,756,719,285	50,435	5,582,450,851			2.12%	3.12%