

**Austin-Bergstrom International Airport
Aviation Activity Report
Calendar Year 2018 vs 2017**

Combined Terminals

	9/2018	9/2017	Percent Change	1/2018 - 9/2018	1/2017 - 9/2017	Percent Change
ABIA						
Total Passenger Activity						
Domestic Enplaned Revenue	584,974	517,266	13.09	5,452,639	4,794,893	13.72
Domestic Deplaned Revenue	592,853	523,015	13.35	5,454,228	4,772,423	14.29
International Enplaned Revenue	14,350	8,722	64.53	153,229	111,451	37.49
International Deplaned Revenue	15,007	8,680	72.89	156,848	112,276	39.70
Domestic Enplaned Non-Revenue	13,383	12,327	8.57	133,846	121,962	9.74
Domestic Deplaned Non-Revenue	12,784	11,894	7.48	128,134	116,184	10.29
International Enplaned Non-Revenue	88	54	62.96	1,147	887	29.31
International Deplaned Non-Revenue	87	62	40.32	965	757	27.48
Intl Enplaned Pre-Cleared Revenue	1,717	1,713	0.23	16,677	14,887	12.02
Intl Deplaned Pre-Cleared Revenue	1,983	1,812	9.44	17,822	15,643	13.93
Intl Enplaned Pre-Cleared Non-Revenue	29	13	123.08	283	201	40.80
Intl Deplaned Pre-Cleared Non-Revenue	27	23	17.39	307	214	43.46
South Terminal Domestic Enplaned Revenue	6,251	6,861	-8.89	122,289	69,143	76.86
South Terminal Domestic Deplaned Revenue	6,228	7,038	-11.51	122,913	68,877	78.45
South Terminal Domestic Enplaned Non-Revenue	8	1	700.00	47	37	27.03
South Terminal Domestic Deplaned Non-Revenue	8	0	0.00	66	13	407.69
ABIA Passenger Totals	1,249,777	1,099,481	13.67	11,761,440	10,199,848	15.31
<i>ABIA Enplaned Passenger Totals</i>	<i>620,800</i>	<i>546,957</i>	<i>13.50</i>	<i>5,880,157</i>	<i>5,113,461</i>	<i>14.99</i>
<i>ABIA Deplaned Passenger Totals</i>	<i>628,977</i>	<i>552,524</i>	<i>13.84</i>	<i>5,881,283</i>	<i>5,086,387</i>	<i>15.63</i>
<i>ABIA Domestic Passenger Totals</i>	<i>1,216,489</i>	<i>1,078,402</i>	<i>12.80</i>	<i>11,414,162</i>	<i>9,943,532</i>	<i>14.79</i>
<i>ABIA International Passenger Totals</i>	<i>33,288</i>	<i>21,079</i>	<i>57.92</i>	<i>347,278</i>	<i>256,316</i>	<i>35.49</i>
CURRENT PASSENGER RECORD = 1,511,634 RECORD SET = JULY 2018						
Total Aircraft Operations						
Air Carrier	11,128	9,870	12.75	100,658	91,765	9.69
Commuter & Air Taxi	1,555	1,243	25.10	12,878	11,014	16.92
Military	679	968	-29.86	7,730	7,575	2.05
General Aviation						
Itinerant	3,466	4,198	-17.44	35,216	36,920	-4.62
Local	34	112	-69.64	1,187	1,979	-40.02
Total G.A.	3,500	4,310	-18.79	36,403	38,899	-6.42
Total Operations	16,862	16,391	2.87	157,669	149,253	5.64

**Austin-Bergstrom International Airport
Aviation Activity Report
Calendar Year 2018 vs 2017**

By Terminal

	9/2018	9/2017	Percent Change	1/2018 - 9/2018	1/2017 - 9/2017	Percent Change
<u>Barbara Jordan Terminal (BJT)</u>						
Passenger Activity						
Domestic Enplaned Revenue	584,974	517,266	13.09	5,452,639	4,794,893	13.72
Domestic Deplaned Revenue	592,853	523,015	13.35	5,454,228	4,772,423	14.29
International Enplaned Revenue	14,350	8,722	64.53	153,229	111,451	37.49
International Deplaned Revenue	15,007	8,680	72.89	156,848	112,276	39.70
Domestic Enplaned Non-Revenue	13,383	12,327	8.57	133,846	121,962	9.74
Domestic Deplaned Non-Revenue	12,784	11,894	7.48	128,134	116,184	10.29
International Enplaned Non-Revenue	88	54	62.96	1,147	887	29.31
International Deplaned Non-Revenue	87	62	40.32	965	757	27.48
Intl Enplaned Pre-Cleared Revenue	1,717	1,713	0.23	16,677	14,887	12.02
Intl Deplaned Pre-Cleared Revenue	1,983	1,812	9.44	17,822	15,643	13.93
Intl Enplaned Pre-Cleared Non-Revenue	29	13	123.08	283	201	40.80
Intl Deplaned Pre-Cleared Non-Revenue	27	23	17.39	307	214	43.46
Barbara Jordan Terminal Passenger Totals	1,237,282	1,085,581	13.97	11,516,125	10,061,778	14.45
<i>BJT Enplaned Passenger Totals</i>	614,541	540,095	13.78	5,757,821	5,044,281	14.15
<i>BJT Deplaned Passenger Totals</i>	622,741	545,486	14.16	5,758,304	5,017,497	14.76
<i>BJT Domestic Passenger Totals</i>	1,203,994	1,064,502	13.10	11,168,847	9,805,462	13.90
<i>BJT International Passenger Totals</i>	33,288	21,079	57.92	347,278	256,316	35.49
<u>South Terminal (ST)</u>						
Passenger Activity						
South Terminal Domestic Enplaned Revenue	6,251	6,861	-8.89	122,289	69,143	76.86
South Terminal Domestic Deplaned Revenue	6,228	7,038	-11.51	122,913	68,877	78.45
South Terminal Domestic Enplaned Non-Revenue	8	1	700.00	47	37	27.03
South Terminal Domestic Deplaned Non-Revenue	8	0	0.00	66	13	407.69
South Terminal Passenger Totals	12,495	13,900	-10.11	245,315	138,070	77.67
<i>ST Enplaned Passenger Totals</i>	6,259	6,862	-8.79	122,336	69,180	76.84
<i>ST Deplaned Passenger Totals</i>	6,236	7,038	-11.40	122,979	68,890	78.52

**Austin-Bergstrom International Airport
Aviation Activity Report
Calendar Year 2018 vs 2017**

	9/2018	9/2017	Percent Change	1/2018 - 9/2018	1/2017 - 9/2017	Percent Change
<u>Total Cargo Activity</u>						
Mail						
Domestic Enplaned Mail	244,037	183,558	32.95	1,826,699	1,739,002	5.04
Domestic Deplaned Mail	390,422	387,830	0.67	3,759,693	3,320,216	13.24
International Enplaned Mail	0	0	0.00	0	0	0.00
International Deplaned Mail	0	0	0.00	0	2	-100.00
South Terminal-Intl Enplaned Mail	0	0	0.00	0	0	0.00
South Terminal-Intl Deplaned Mail	0	0	0.00	0	0	0.00
Mail Totals	634,459	571,388	11.04	5,586,392	5,059,220	10.42
Cargo						
Domestic Enplaned Cargo	4,796,176	6,314,785	-24.05	44,377,210	46,799,576	-5.18
Domestic Deplaned Cargo	6,919,186	7,206,354	-3.98	61,572,919	63,260,529	-2.67
International Enplaned Cargo	442,983	519,111	-14.67	5,250,897	5,904,906	-11.08
International Deplaned Cargo	91,384	900,853	-89.86	2,125,832	3,628,959	-41.42
South Terminal-Intl Enplaned Cargo	0	0	0.00	0	0	0.00
South Terminal-Intl Deplaned Cargo	0	0	0.00	0	0	0.00
Cargo Totals	12,249,729	14,941,103	-18.01	113,326,858	119,593,970	-5.24
Belly Freight						
Domestic Enplaned Belly Freight	303,695	290,805	4.43	2,725,009	2,496,653	9.15
Domestic Deplaned Belly Freight	503,569	496,065	1.51	4,398,562	4,582,764	-4.02
International Enplaned Belly Freight	283,732	230,364	23.17	2,456,181	2,061,702	19.13
International Deplaned Belly Freight	560,784	729,001	-23.08	5,206,613	6,415,879	-18.85
South Terminal-Intl Enplaned Belly Freight	0	0	0.00	0	0	0.00
South Terminal-Intl Deplaned Belly Freight	0	0	0.00	0	0	0.00
Belly Freight Totals	1,651,780	1,746,235	-5.41	14,786,365	15,556,998	-4.95
Cargo Totals (Mail, Cargo, Belly Freight)	14,535,968	17,258,726	-15.78	133,699,615	140,210,188	-4.64
<i>Enplaned Cargo Totals</i>	<i>6,070,623</i>	<i>7,538,623</i>	<i>-19.47</i>	<i>56,635,996</i>	<i>59,001,839</i>	<i>-4.01</i>
<i>Deplaned Cargo Totals</i>	<i>8,465,345</i>	<i>9,720,103</i>	<i>-12.91</i>	<i>77,063,619</i>	<i>81,208,349</i>	<i>-5.10</i>
<i>Domestic Cargo Totals</i>	<i>13,157,085</i>	<i>14,879,397</i>	<i>-11.58</i>	<i>118,660,092</i>	<i>122,198,740</i>	<i>-2.90</i>
<i>International Cargo Totals</i>	<i>1,378,883</i>	<i>2,379,329</i>	<i>-42.05</i>	<i>15,039,523</i>	<i>18,011,448</i>	<i>-16.50</i>

CURRENT CARGO RECORD = 40,215,518

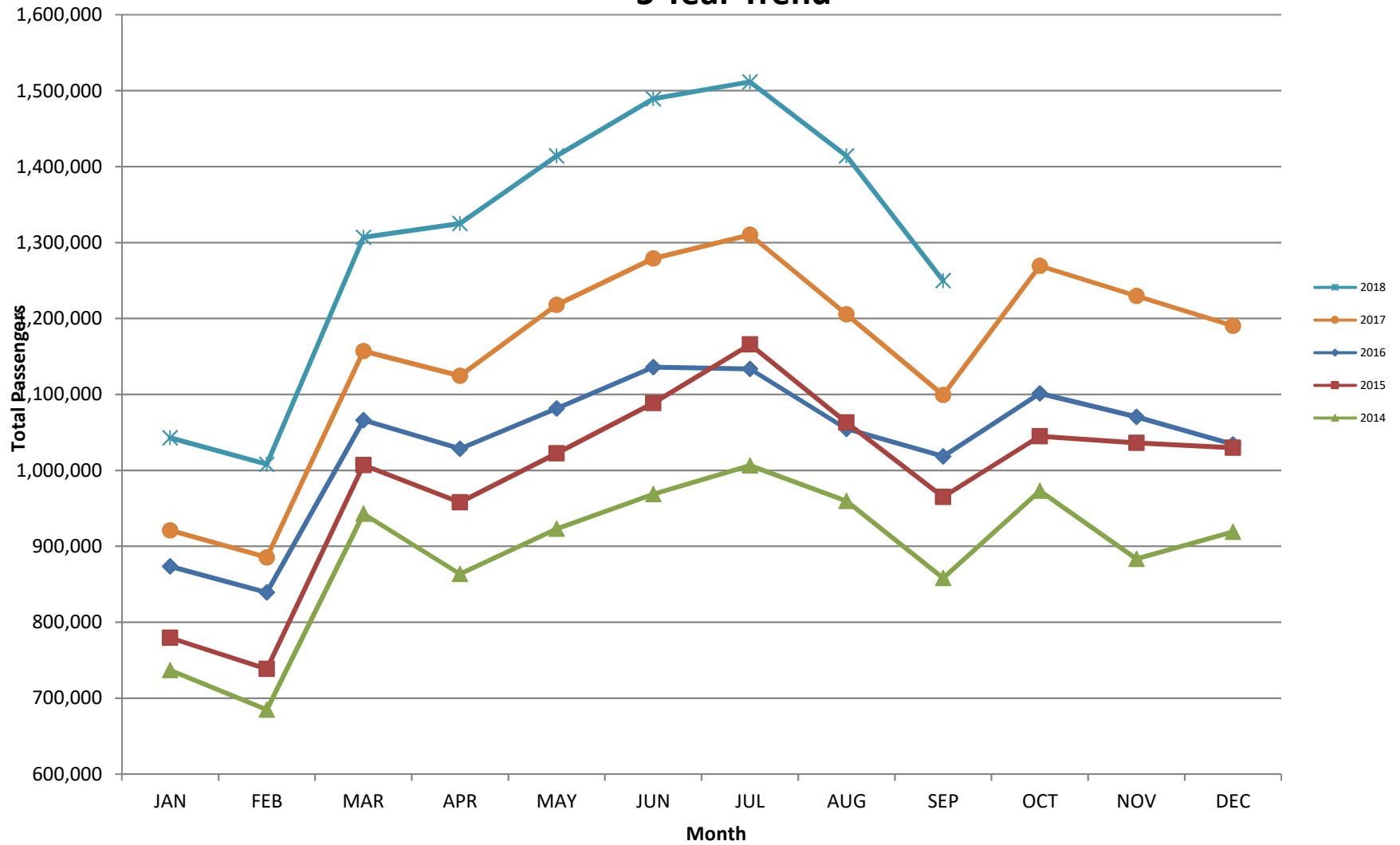
RECORD SET = MARCH 2001

AUS – Airline Codes
September 2018

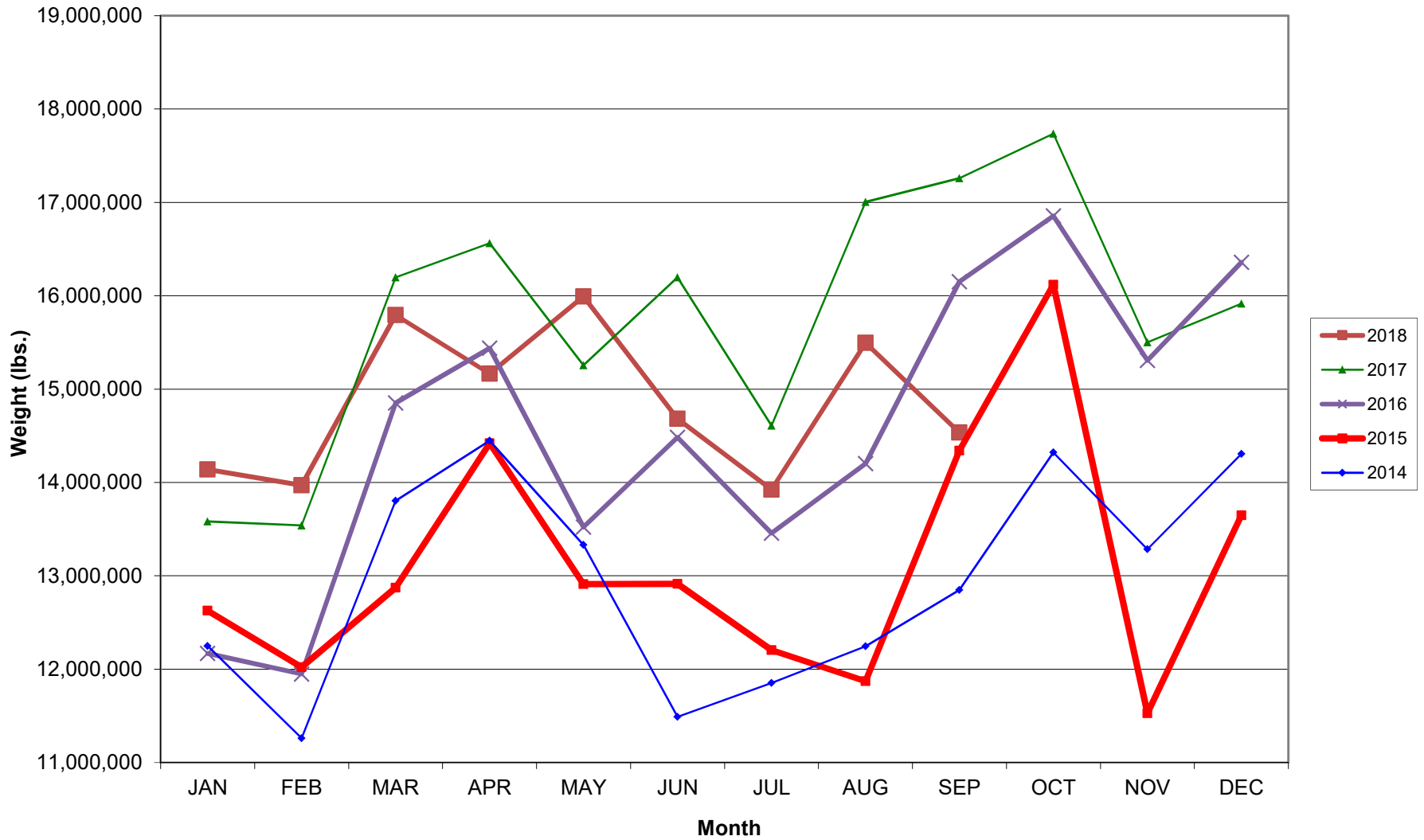
<u>Code</u>	<u>Carrier</u>
AM	Aerovias de Mexico S.A. de C.V. dba AeroMexico Airlines
AC	Air Canada
AS	Alaska Airlines, Inc. (Includes Virgin America. Merger effective 2/1/2018)
G4	Allegiant Air, LLC
AA	American Airlines, Inc.
BA	British Airways Plc
Y4	Concesionaria Vuela Compañía de Aviación, S.A.P.I. de C.V dba Volaris
DE	Condor Airlines
DL	Delta Airlines
F9	Frontier Airlines
B6	JetBlue Airways Corp.
DY	Norwegian Air UK, Ltd.
WN	Southwest Airlines
SY	Sun Country Airlines/ MN Airlines, LLC
WQ	Swift Air
UA	United Airlines, Inc.
VC	VIA Airlines

AUSTIN PASSENGER TRAFFIC

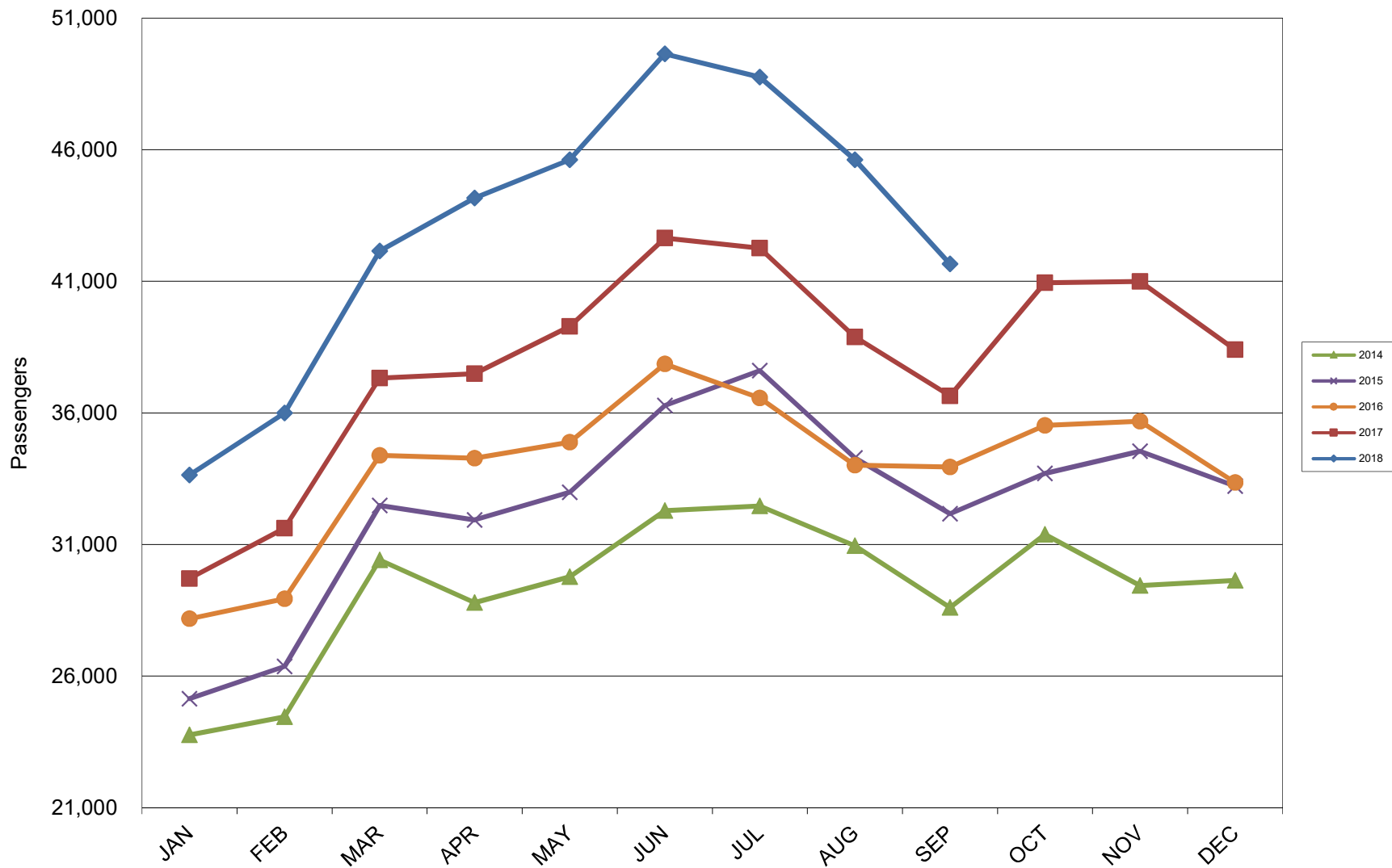
5 Year Trend



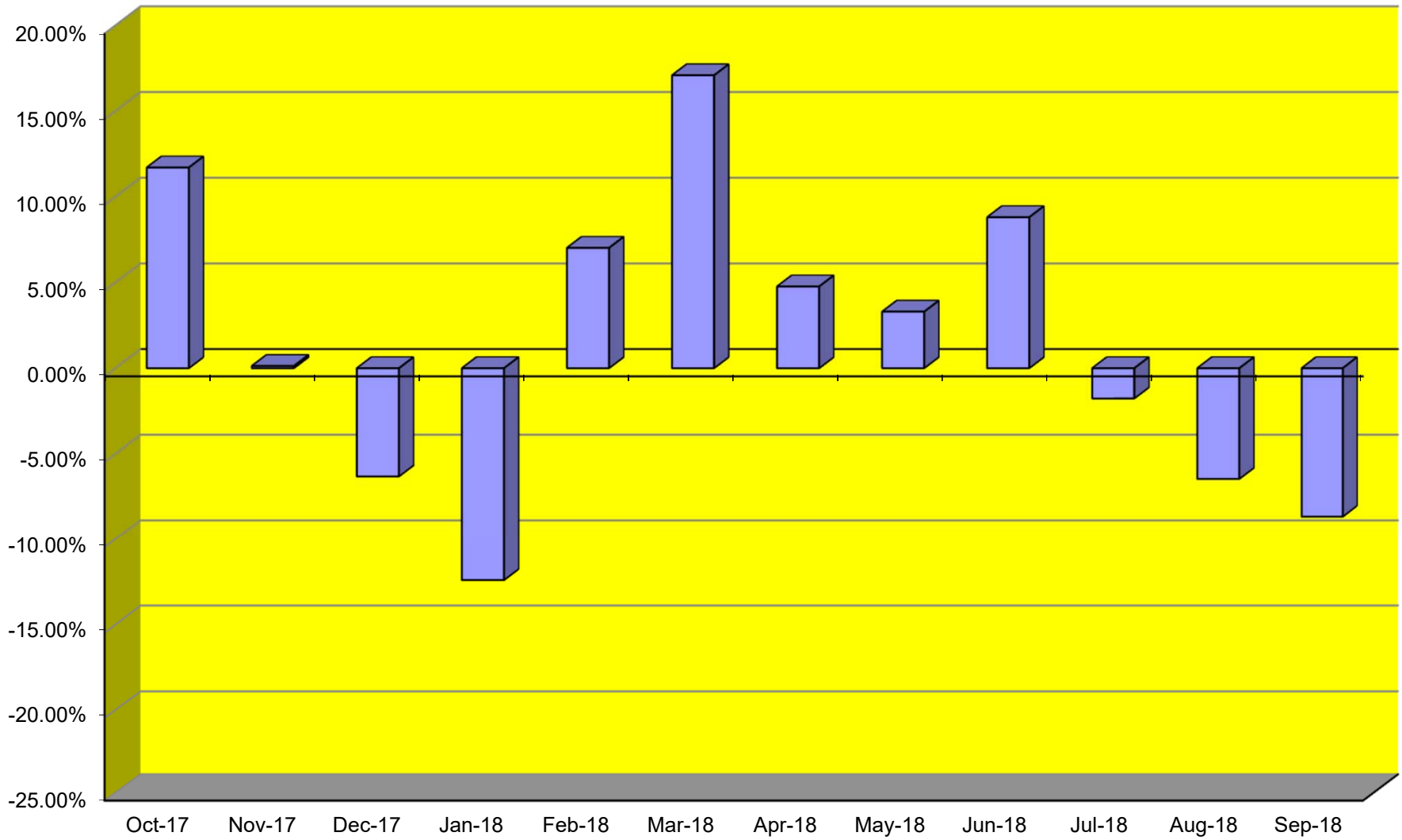
TOTAL CARGO POUNDAGE - AUSTIN, TEXAS



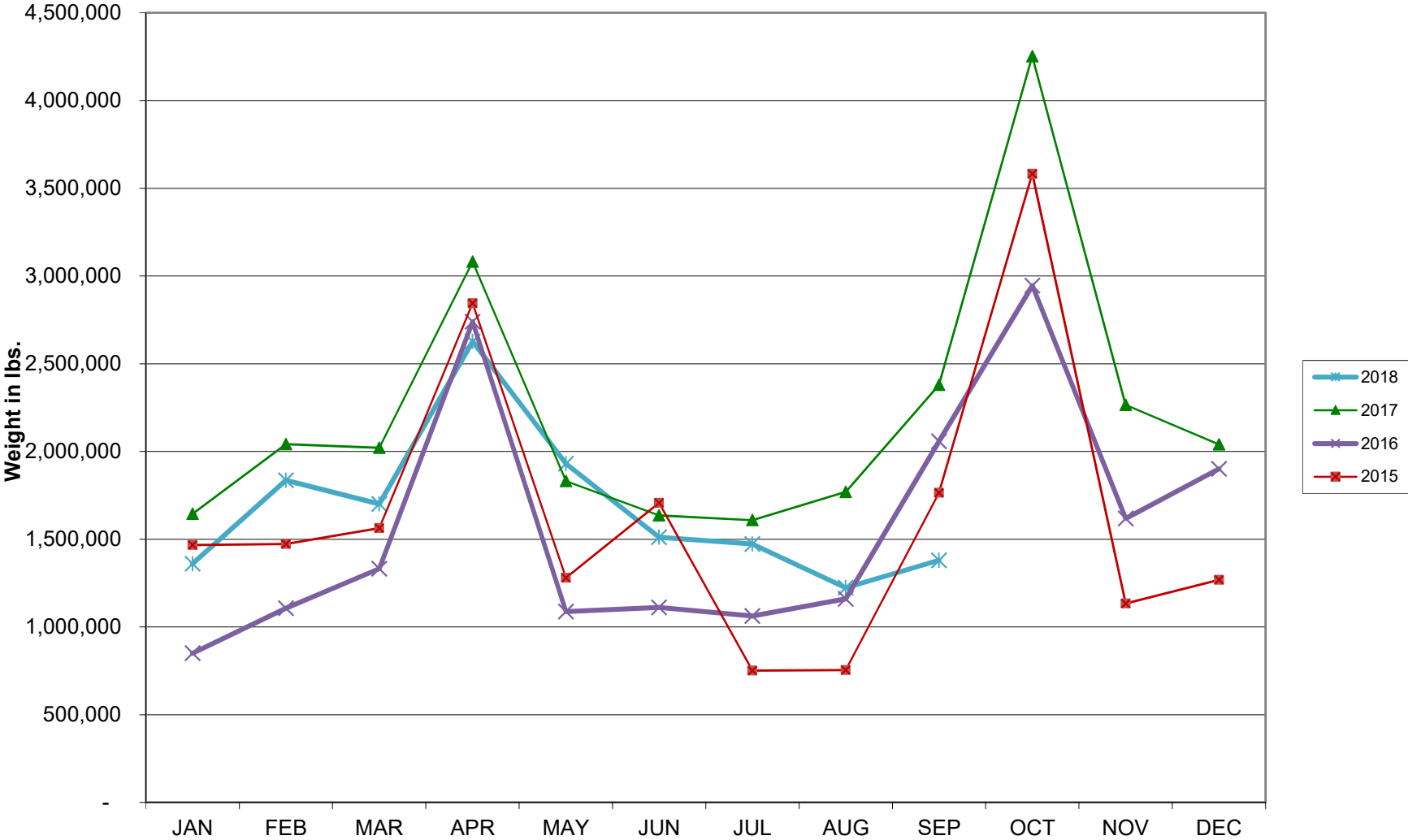
Average Daily Passengers



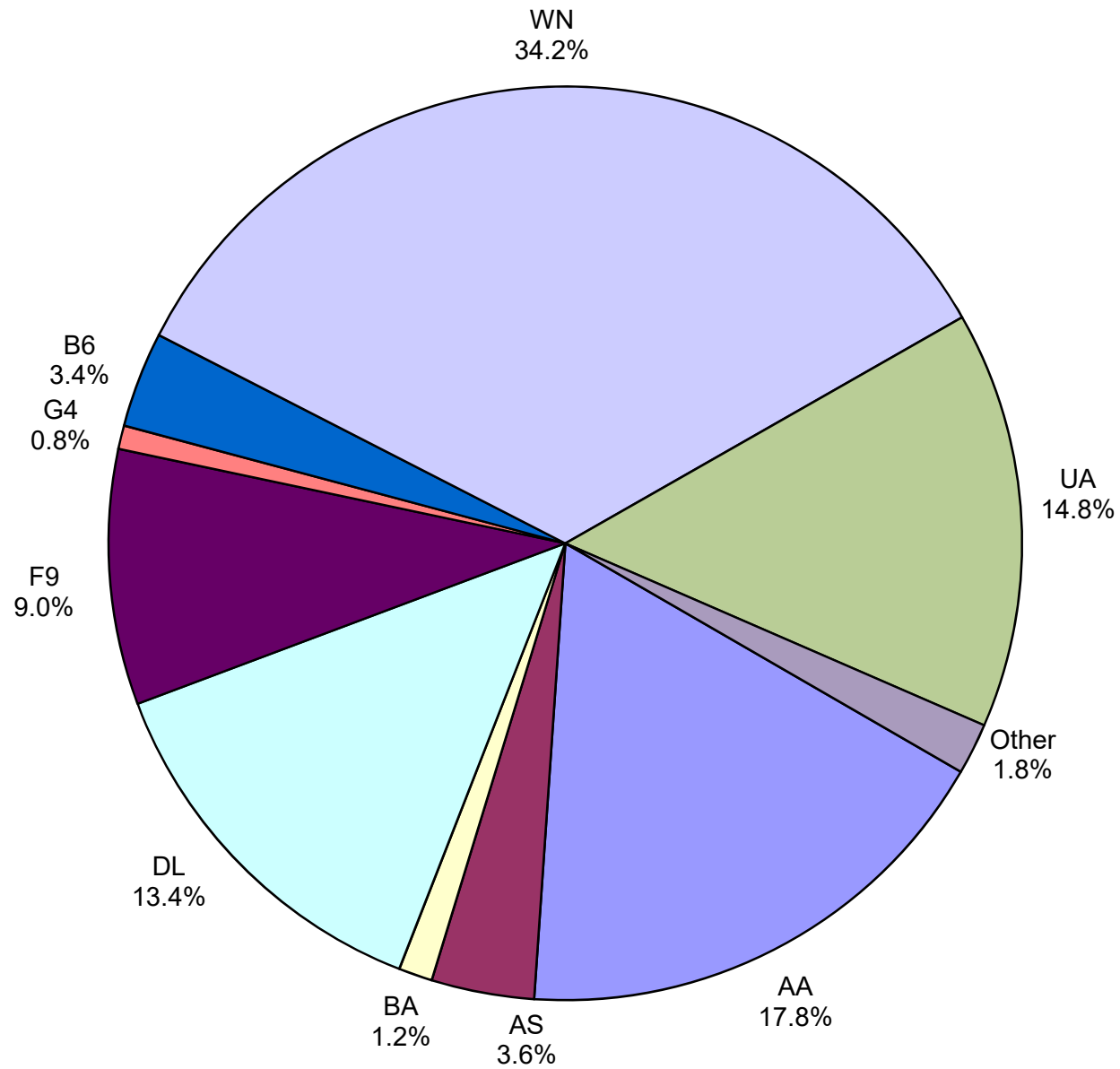
Monthly % Change in Average Daily Passengers



HISTORY OF INTERNATIONAL AIR CARGO



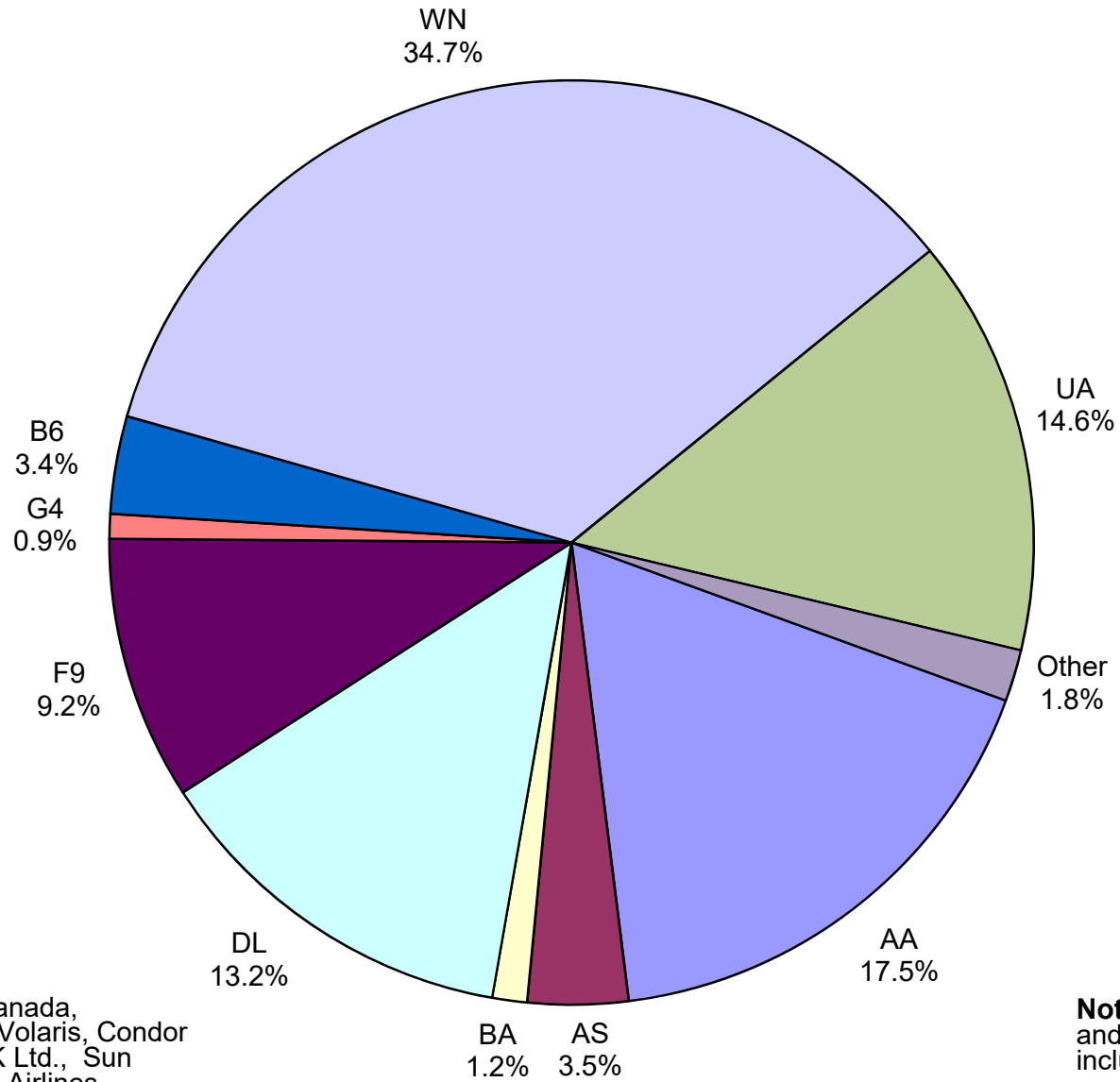
Total Passengers September 2018



Other: Aeromexico, Air Canada LLC, Condor Airlines, Norwegian Air UK, Ltd., Sun Country, Swift Air, VIA Airlines and Concesionaria Vuela dba Volaris

Note: American, Delta and United Airlines percentages include Affiliates.

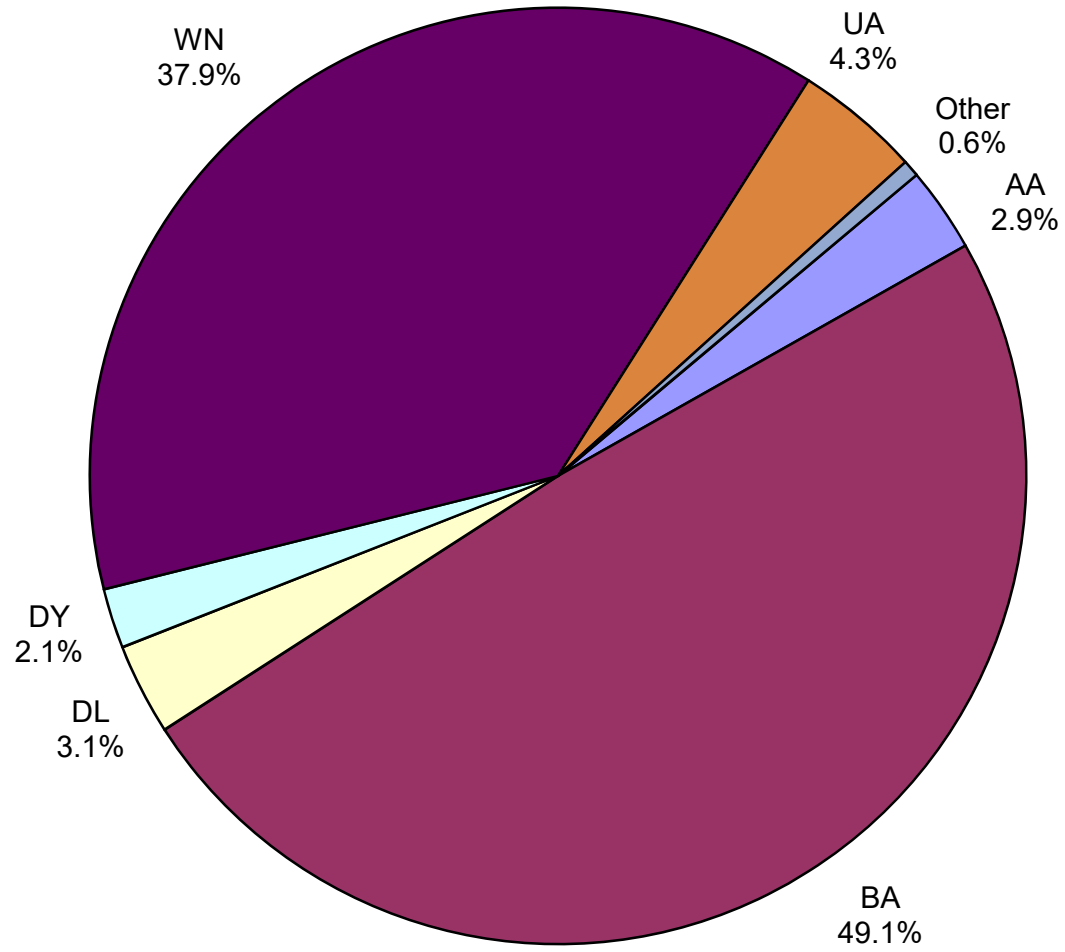
**All Passenger Carriers
Enplaned Revenue Passengers
September 2018**



Other: Aeromexico, Air Canada, Concesionaria Vuela dba Volaris, Condor Airlines, Norwegian Air UK Ltd., Sun Country, Swift Air and VIA Airlines

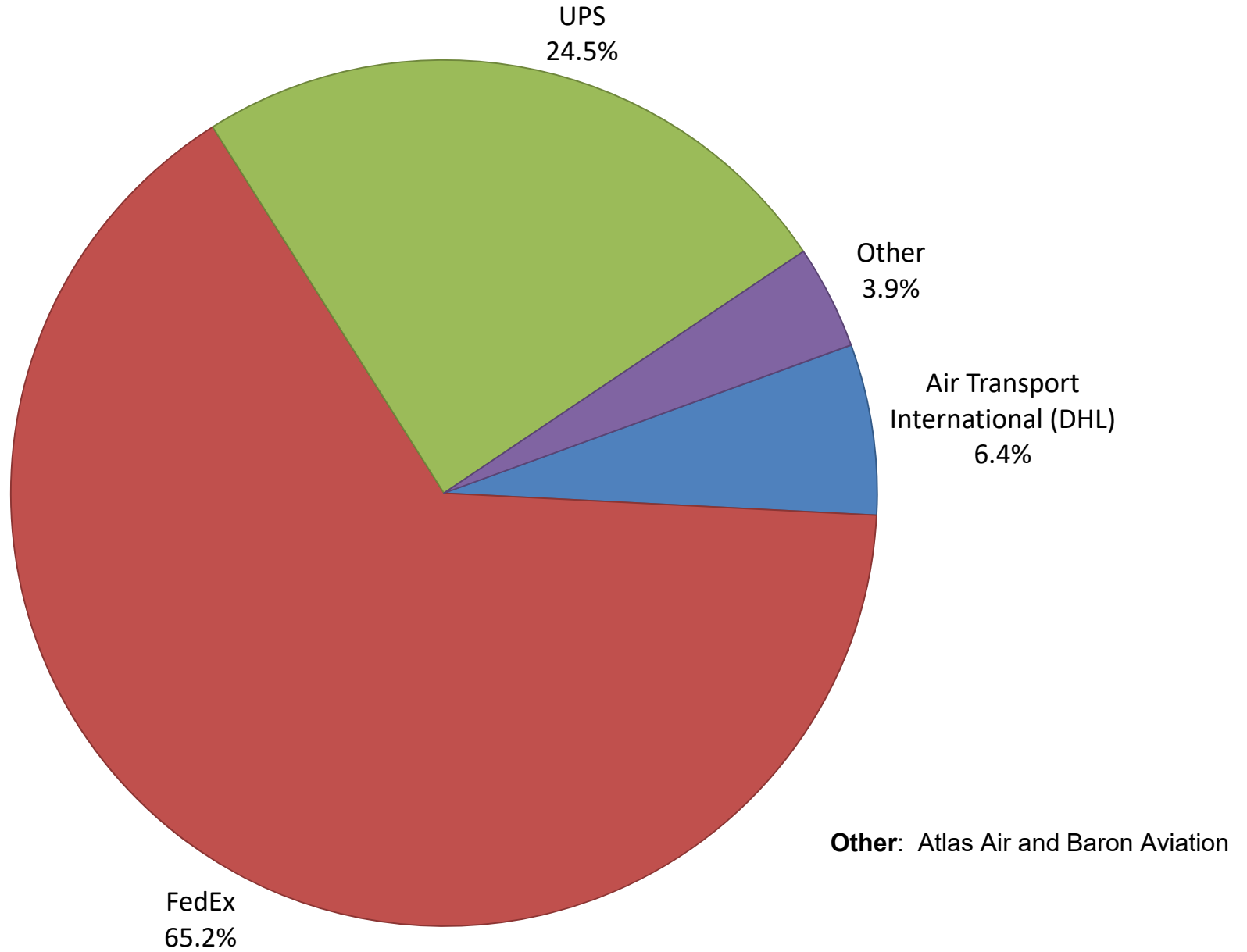
Note: American/US Airways, Delta and United Airlines percentages include Affiliates.

**AUS Belly Freight Market Shares
September 2018**

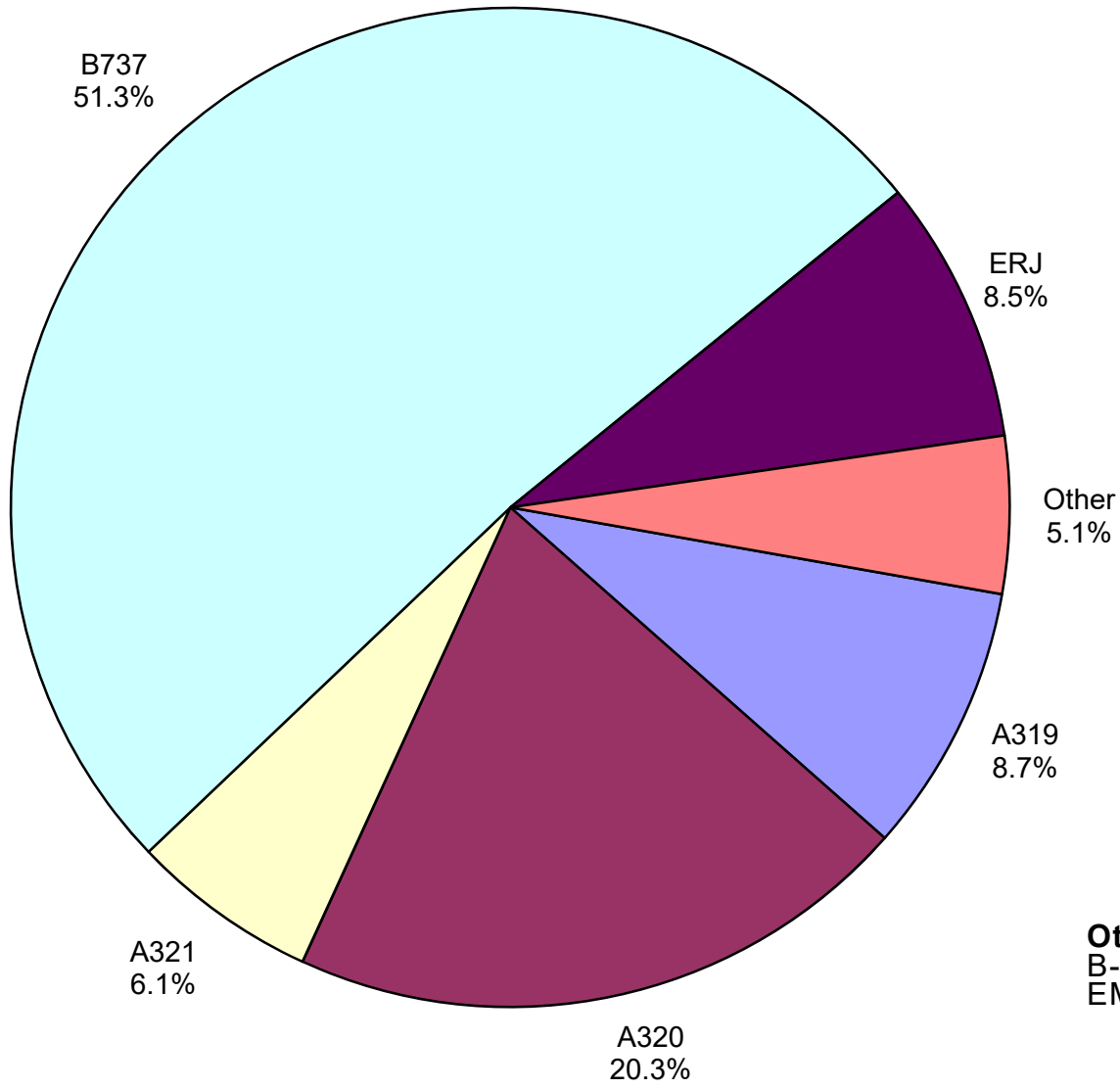


Other = Alaska Airlines

Air Cargo Market Share September 2018

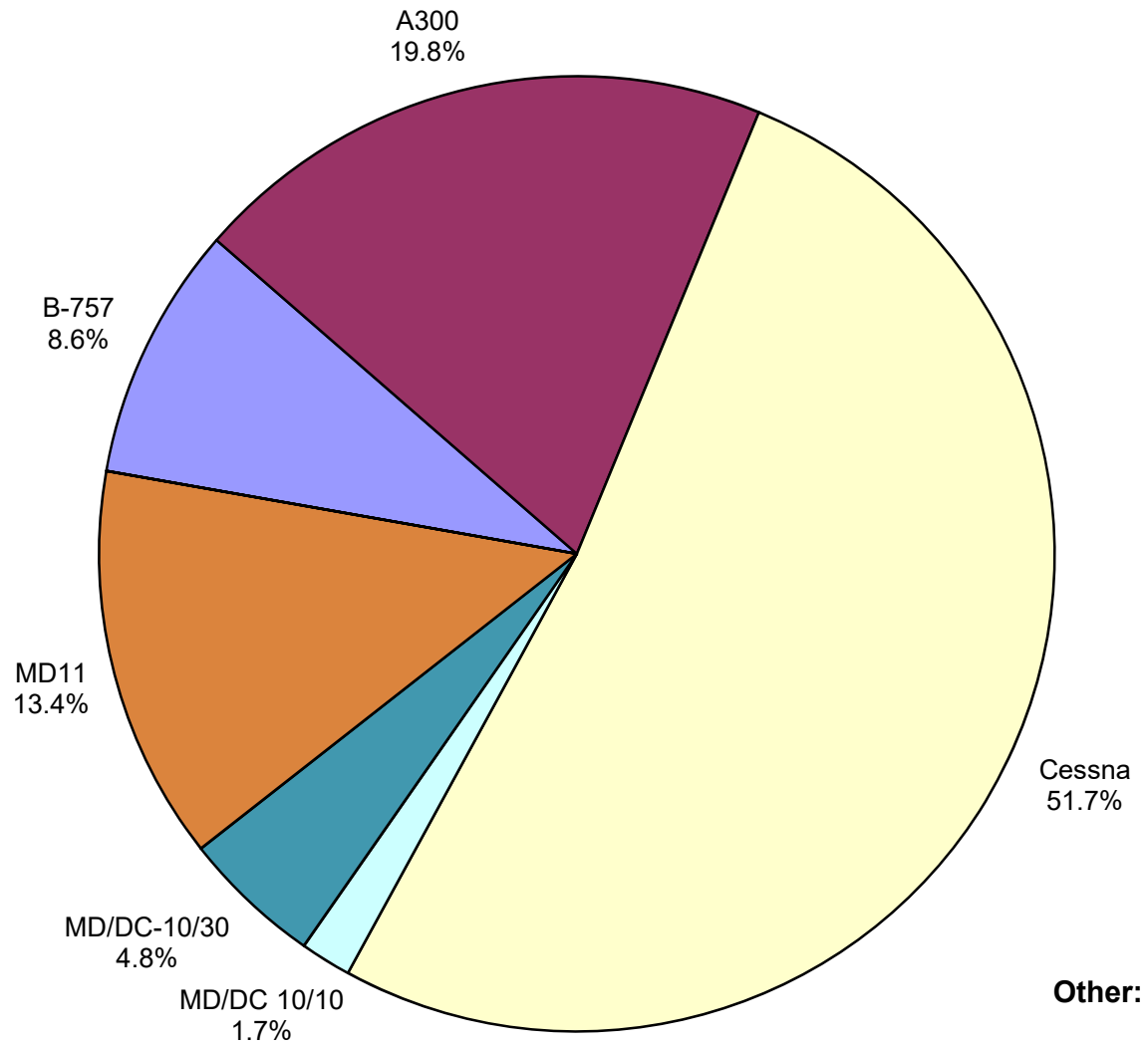


**AUS Scheduled Passenger Aircraft Fleet Mix
September 2018**



Other: B-717, B-747-400,
B-757, B-767, B-787-900, CRJ,
EMB and MD-88

**AUS Scheduled Cargo Aircraft Fleet Mix
September 2018**



Austin-Bergstrom International Airport

PAX Detail Report - September, 2018

Company	09/2018	09/2017	Period		YTD 2018	YTD 2017	YTD		2018 Share	2017 Share	Share Diff
			Difference	Change			Difference	Change			
ABC Aerolineas S.A. de C.V.	0	0	0	0.0	41	0	41	0.0	0.0	0.0	0.0
Aerovías de Mexico S.A. de C.V.	2,126	2,170	-44	-2.0	32,145	27,421	4,724	17.2	0.3	0.3	0.0
Air Canada	3,756	3,561	195	5.5	35,089	30,945	4,144	13.4	0.3	0.3	0.0
Alaska Airlines	45,405	28,847	16,558	57.4	411,007	196,892	214,115	108.7	3.5	1.9	1.6
Allegiant Air	10,426	12,989	-2,563	-19.7	227,470	194,077	33,393	17.2	1.9	1.9	0.0
American Airlines	221,905	209,131	12,774	6.1	2,072,354	1,938,626	133,728	6.9	17.6	19.0	-1.4
British Airways	14,961	11,193	3,768	33.7	128,024	96,539	31,485	32.6	1.1	0.9	0.1
Concesionaria Vuela Compañía de Aviación, S.A.P.I. de C.V.	1,103	640	463	72.3	11,972	11,659	313	2.7	0.1	0.1	0.0
Condor Airlines	3,170	3,510	-340	-9.7	18,876	19,046	-170	-0.9	0.2	0.2	0.0
Delta Air Lines	167,079	145,946	21,133	14.5	1,575,529	1,297,545	277,984	21.4	13.4	12.7	0.7
Frontier Airlines	112,888	39,597	73,291	185.1	857,778	348,163	509,615	146.4	7.3	3.4	3.9
Iberia Airlines	0	0	0	0.0	0	245	-245	-100.0	0.0	0.0	0.0
JetBlue Airways	42,330	44,169	-1,839	-4.2	443,336	453,726	-10,390	-2.3	3.8	4.4	-0.7
Miami Air International	0	0	0	0.0	309	0	309	0.0	0.0	0.0	0.0
Norwegian Air UK LTD	7,480	0	7,480	0.0	47,272	0	47,272	0.0	0.4	0.0	0.4
Scandinavian Airlines	0	0	0	0.0	697	0	697	0.0	0.0	0.0	0.0
Southwest Airlines	427,629	407,982	19,647	4.8	4,116,608	3,798,412	318,196	8.4	35.0	37.2	-2.2
Sun Country Airlines	2,254	980	1,274	130.0	19,645	4,319	15,326	354.9	0.2	0.0	0.1
Swift Air	692	278	414	148.9	1,834	1,272	562	44.2	0.0	0.0	0.0
Texas Sky	0	0	0	0.0	0	604	-604	-100.0	0.0	0.0	0.0
United Airlines	184,504	175,263	9,241	5.3	1,731,997	1,660,326	71,671	4.3	14.7	16.3	-1.6
Vacation Express	0	0	0	0.0	2,758	0	2,758	0.0	0.0	0.0	0.0
VIA Airlines	2,069	242	1,827	755.0	15,582	2,150	13,432	624.7	0.1	0.0	0.1
Virgin America	0	12,983	-12,983	-100.0	11,117	117,745	-106,628	-90.6	0.1	1.2	-1.1
Xtra Airways/Casino Express	0	0	0	0.0	0	136	-136	-100.0	0.0	0.0	0.0
Report Totals	1,249,777	1,099,481	150,296	13.7%	11,761,440	10,199,848	1,561,592	15.3%			

Statistics Included in Report:

Domestic Passengers:	Enplaned Revenue, Deplaned Revenue, Enplaned Non-Revenue, Deplaned Non-Revenue
International Passengers:	Enplaned Revenue, Deplaned Revenue, Enplaned Non-Revenue, Deplaned Non-Revenue
International Pre-Cleared Passengers:	Enplaned Revenue, Deplaned Revenue, Enplaned Non-Revenue, Deplaned Non-Revenue
South Terminal Domestic Passengers:	Enplaned Revenue, Deplaned Revenue, Enplaned Non-Revenue, Deplaned Non-Revenue

Austin-Bergstrom International Airport

Summary Landing Report

Landing Type: Total

Month	2018		2017		2016		% Change 2018 - 2017		% Change 2017 - 2016	
	Count	Weight	Count	Weight	Count	Weight	Count	Weight	Count	Weight
January	5,086	688,923,110	4,768	612,688,871	4,622	560,718,408	6.67%	12.44%	3.16%	9.27%
February	4,706	637,500,756	4,357	552,711,639	4,387	527,452,920	8.01%	15.34%	-0.68%	4.79%
March	5,643	760,648,260	5,307	685,661,659	5,151	639,655,137	6.33%	10.94%	3.03%	7.19%
April	5,797	793,367,736	5,179	689,402,051	4,892	614,643,711	11.93%	15.08%	5.87%	12.16%
May	6,117	831,431,763	5,529	736,484,083	5,096	630,853,941	10.63%	12.89%	8.50%	16.74%
June	6,211	852,438,818	5,603	752,628,599	5,179	651,537,449	10.85%	13.26%	8.19%	15.52%
July	6,346	869,502,671	5,698	763,088,836	5,233	663,015,597	11.37%	13.95%	8.89%	15.09%
August	6,245	861,046,997	5,490	741,110,019	5,181	660,099,361	13.75%	16.18%	5.96%	12.27%
September	5,737	790,731,351	5,046	679,381,339	4,738	623,397,035	13.69%	16.39%	6.50%	8.98%
October			5,448	743,973,610	4,923	649,182,343			10.66%	14.60%
November			5,289	718,179,948	4,775	624,303,554			10.76%	15.04%
December			5,442	737,424,963	4,893	629,611,090			11.22%	17.12%
Totals for Selected Period	51,888	7,085,591,462	46,977	6,213,157,096	44,479	5,571,373,559	10.45%	14.04%	5.62%	11.52%
Yearly Totals	51,888	7,085,591,462	63,156	8,412,735,617	59,070	7,474,470,546			6.92%	12.55%