

**Austin-Bergstrom International Airport
Aviation Activity Report
Calendar Year 2018 vs 2017**

Combined Terminals

	8/2018	8/2017	Percent Change	1/2018 - 8/2018	1/2017 - 8/2017	Percent Change
ABIA						
Total Passenger Activity						
Domestic Enplaned Revenue	644,973	547,893	17.72	4,867,665	4,277,627	13.79
Domestic Deplaned Revenue	670,876	579,960	15.68	4,861,375	4,249,408	14.40
International Enplaned Revenue	17,250	11,442	50.76	138,879	102,729	35.19
International Deplaned Revenue	20,627	13,172	56.60	141,841	103,596	36.92
Domestic Enplaned Non-Revenue	16,861	14,361	17.41	120,463	109,635	9.88
Domestic Deplaned Non-Revenue	16,009	13,566	18.01	115,350	104,290	10.61
International Enplaned Non-Revenue	158	139	13.67	1,059	833	27.13
International Deplaned Non-Revenue	155	135	14.81	878	695	26.33
Intl Enplaned Pre-Cleared Revenue	1,839	1,572	16.98	14,960	13,174	13.56
Intl Deplaned Pre-Cleared Revenue	2,190	1,874	16.86	15,839	13,831	14.52
Intl Enplaned Pre-Cleared Non-Revenue	33	25	32.00	254	188	35.11
Intl Deplaned Pre-Cleared Non-Revenue	35	19	84.21	280	191	46.60
South Terminal Domestic Enplaned Revenue	11,614	10,331	12.42	116,038	62,282	86.31
South Terminal Domestic Deplaned Revenue	11,346	10,844	4.63	116,685	61,839	88.69
South Terminal Domestic Enplaned Non-Revenue	7	5	40.00	39	36	8.33
South Terminal Domestic Deplaned Non-Revenue	10	3	233.33	58	13	346.15
ABIA Passenger Totals	1,413,983	1,205,341	17.31	10,511,663	9,100,367	15.51
<i>ABIA Enplaned Passenger Totals</i>	<i>692,735</i>	<i>585,768</i>	<i>18.26</i>	<i>5,259,357</i>	<i>4,566,504</i>	<i>15.17</i>
<i>ABIA Deplaned Passenger Totals</i>	<i>721,248</i>	<i>619,573</i>	<i>16.41</i>	<i>5,252,306</i>	<i>4,533,863</i>	<i>15.85</i>
<i>ABIA Domestic Passenger Totals</i>	<i>1,371,696</i>	<i>1,176,963</i>	<i>16.55</i>	<i>10,197,673</i>	<i>8,865,130</i>	<i>15.03</i>
<i>ABIA International Passenger Totals</i>	<i>42,287</i>	<i>28,378</i>	<i>49.01</i>	<i>313,990</i>	<i>235,237</i>	<i>33.48</i>
CURRENT PASSENGER RECORD = 1,511,634 RECORD SET = JULY 2018						
Total Aircraft Operations						
Air Carrier	12,074	10,703	12.81	89,530	81,895	9.32
Commuter & Air Taxi	1,385	1,106	25.23	11,323	9,771	15.88
Military	911	1,005	-9.35	7,051	6,607	6.72
General Aviation						
Itinerant	4,162	3,581	16.22	31,750	32,722	-2.97
Local	222	272	-18.38	1,153	1,867	-38.24
Total G.A.	4,384	3,853	13.78	32,903	34,589	-4.87
Total Operations	18,754	16,667	12.52	140,807	132,862	5.98

**Austin-Bergstrom International Airport
Aviation Activity Report
Calendar Year 2018 vs 2017**

By Terminal

	8/2018	8/2017	Percent Change	1/2018 - 8/2018	1/2017 - 8/2017	Percent Change
<u>Barbara Jordan Terminal (BJT)</u>						
Passenger Activity						
Domestic Enplaned Revenue	644,973	547,893	17.72	4,867,665	4,277,627	13.79
Domestic Deplaned Revenue	670,876	579,960	15.68	4,861,375	4,249,408	14.40
International Enplaned Revenue	17,250	11,442	50.76	138,879	102,729	35.19
International Deplaned Revenue	20,627	13,172	56.60	141,841	103,596	36.92
Domestic Enplaned Non-Revenue	16,861	14,361	17.41	120,463	109,635	9.88
Domestic Deplaned Non-Revenue	16,009	13,566	18.01	115,350	104,290	10.61
International Enplaned Non-Revenue	158	139	13.67	1,059	833	27.13
International Deplaned Non-Revenue	155	135	14.81	878	695	26.33
Intl Enplaned Pre-Cleared Revenue	1,839	1,572	16.98	14,960	13,174	13.56
Intl Deplaned Pre-Cleared Revenue	2,190	1,874	16.86	15,839	13,831	14.52
Intl Enplaned Pre-Cleared Non-Revenue	33	25	32.00	254	188	35.11
Intl Deplaned Pre-Cleared Non-Revenue	35	19	84.21	280	191	46.60
Barbara Jordan Terminal Passenger Totals	1,391,006	1,184,158	17.47	10,278,843	8,976,197	14.51
<i>BJT Enplaned Passenger Totals</i>	681,114	575,432	18.37	5,143,280	4,504,186	14.19
<i>BJT Deplaned Passenger Totals</i>	709,892	608,726	16.62	5,135,563	4,472,011	14.84
<i>BJT Domestic Passenger Totals</i>	1,348,719	1,155,780	16.69	9,964,853	8,740,960	14.00
<i>BJT International Passenger Totals</i>	42,287	28,378	49.01	313,990	235,237	33.48
<u>South Terminal (ST)</u>						
Passenger Activity						
South Terminal Domestic Enplaned Revenue	11,614	10,331	12.42	116,038	62,282	86.31
South Terminal Domestic Deplaned Revenue	11,346	10,844	4.63	116,685	61,839	88.69
South Terminal Domestic Enplaned Non-Revenue	7	5	40.00	39	36	8.33
South Terminal Domestic Deplaned Non-Revenue	10	3	233.33	58	13	346.15
South Terminal Passenger Totals	22,977	21,183	8.47	232,820	124,170	87.50
<i>ST Enplaned Passenger Totals</i>	11,621	10,336	12.43	116,077	62,318	86.27
<i>ST Deplaned Passenger Totals</i>	11,356	10,847	4.69	116,743	61,852	88.75

**Austin-Bergstrom International Airport
Aviation Activity Report
Calendar Year 2018 vs 2017**

	8/2018	8/2017	Percent Change	1/2018 - 8/2018	1/2017 - 8/2017	Percent Change
<u>Total Cargo Activity</u>						
Mail						
Domestic Enplaned Mail	213,274	197,968	7.73	1,582,662	1,555,444	1.75
Domestic Deplaned Mail	452,728	396,400	14.21	3,369,271	2,932,386	14.90
International Enplaned Mail	0	0	0.00	0	0	0.00
International Deplaned Mail	0	0	0.00	0	2	-100.00
South Terminal-Intl Enplaned Mail	0	0	0.00	0	0	0.00
South Terminal-Intl Deplaned Mail	0	0	0.00	0	0	0.00
Mail Totals	666,002	594,368	12.05	4,951,933	4,487,832	10.34
Cargo						
Domestic Enplaned Cargo	5,411,559	5,862,678	-7.69	39,581,034	40,484,791	-2.23
Domestic Deplaned Cargo	7,337,408	7,925,755	-7.42	54,653,733	56,054,175	-2.50
International Enplaned Cargo	222,411	603,981	-63.18	4,807,914	5,385,795	-10.73
International Deplaned Cargo	94,620	173,418	-45.44	2,034,448	2,728,106	-25.43
South Terminal-Intl Enplaned Cargo	0	0	0.00	0	0	0.00
South Terminal-Intl Deplaned Cargo	0	0	0.00	0	0	0.00
Cargo Totals	13,065,998	14,565,832	-10.30	101,077,129	104,652,867	-3.42
Belly Freight						
Domestic Enplaned Belly Freight	326,771	312,689	4.50	2,421,314	2,205,848	9.77
Domestic Deplaned Belly Freight	530,594	539,874	-1.72	3,894,993	4,086,699	-4.69
International Enplaned Belly Freight	304,185	215,184	41.36	2,172,449	1,831,338	18.63
International Deplaned Belly Freight	602,269	776,983	-22.49	4,645,829	5,686,878	-18.31
South Terminal-Intl Enplaned Belly Freight	0	0	0.00	0	0	0.00
South Terminal-Intl Deplaned Belly Freight	0	0	0.00	0	0	0.00
Belly Freight Totals	1,763,819	1,844,730	-4.39	13,134,585	13,810,763	-4.90
Cargo Totals (Mail, Cargo, Belly Freight)	15,495,819	17,004,930	-8.87	119,163,647	122,951,462	-3.08
<i>Enplaned Cargo Totals</i>	<i>6,478,200</i>	<i>7,192,500</i>	<i>-9.93</i>	<i>50,565,373</i>	<i>51,463,216</i>	<i>-1.74</i>
<i>Deplaned Cargo Totals</i>	<i>9,017,619</i>	<i>9,812,430</i>	<i>-8.10</i>	<i>68,598,274</i>	<i>71,488,246</i>	<i>-4.04</i>
<i>Domestic Cargo Totals</i>	<i>14,272,334</i>	<i>15,235,364</i>	<i>-6.32</i>	<i>105,503,007</i>	<i>107,319,343</i>	<i>-1.69</i>
<i>International Cargo Totals</i>	<i>1,223,485</i>	<i>1,769,566</i>	<i>-30.86</i>	<i>13,660,640</i>	<i>15,632,119</i>	<i>-12.61</i>

CURRENT CARGO RECORD = 40,215,518

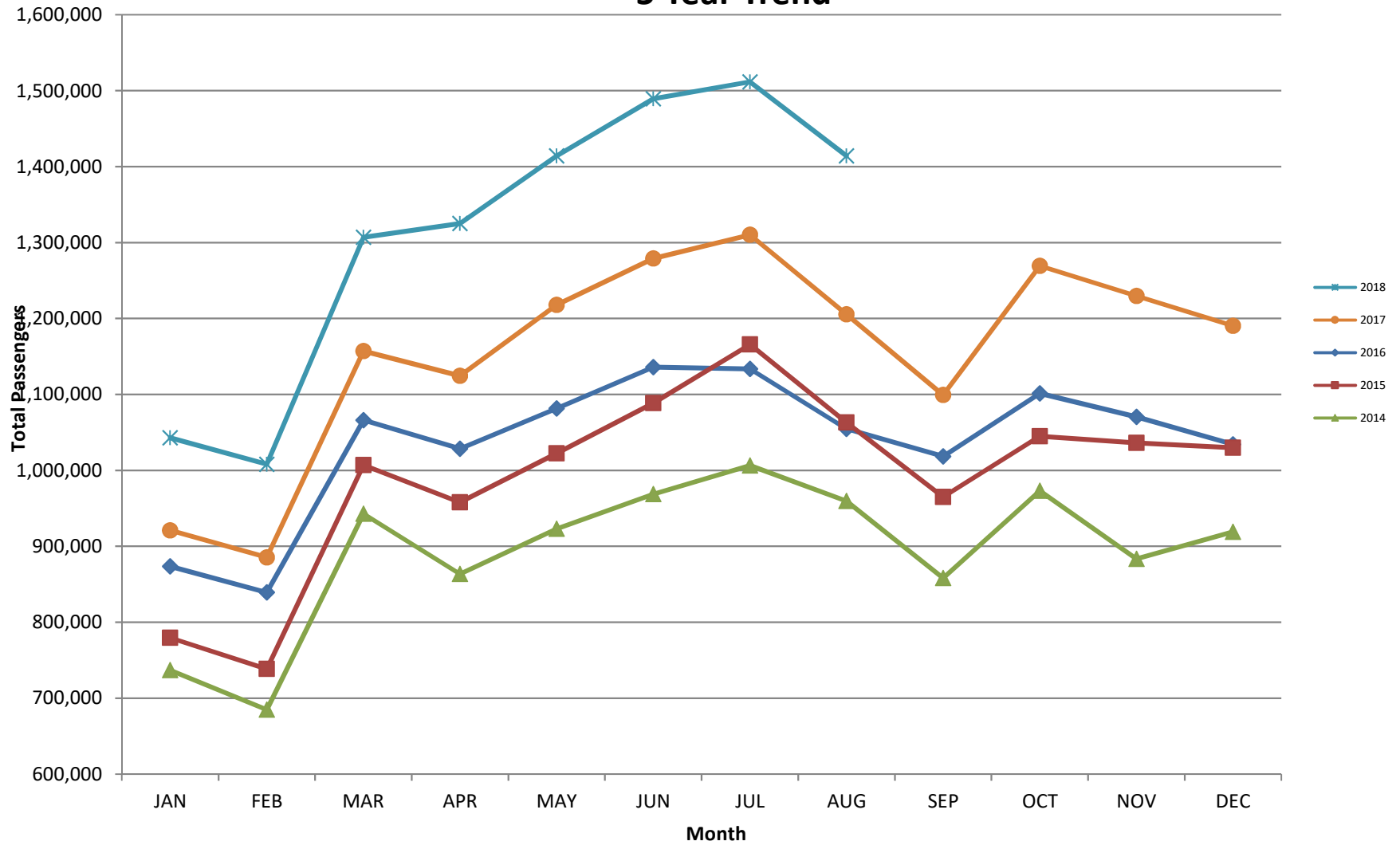
RECORD SET = MARCH 2001

AUS – Airline Codes
August 2018

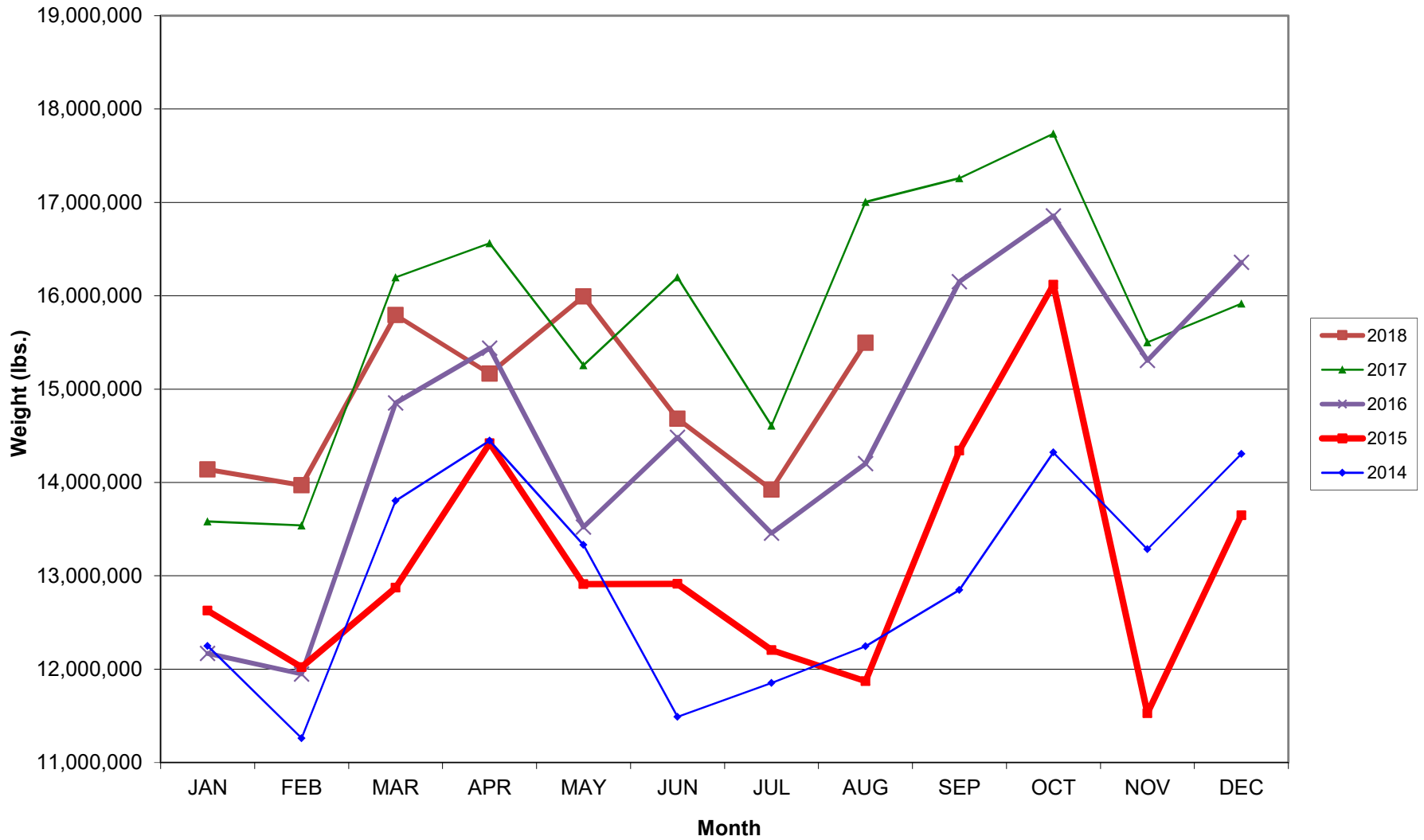
<u>Code</u>	<u>Carrier</u>
AM	Aerovias de Mexico S.A. de C.V. dba AeroMexico Airlines
AC	Air Canada
AS	Alaska Airlines, Inc. (Includes Virgin America. Merger effective 2/1/2018)
G4	Allegiant Air, LLC
AA	American Airlines, Inc.
BA	British Airways Plc
Y4	Concesionaria Vuela Compañía de Aviación, S.A.P.I. de C.V dba Volaris
DE	Condor Airlines
DL	Delta Airlines
F9	Frontier Airlines
B6	JetBlue Airways Corp.
DY	Norwegian Air UK, Ltd.
WN	Southwest Airlines
SY	Sun Country Airlines/ MN Airlines, LLC
UA	United Airlines, Inc.
WQ	Vacation Express handled by Swift Air
VC	VIA Airlines

AUSTIN PASSENGER TRAFFIC

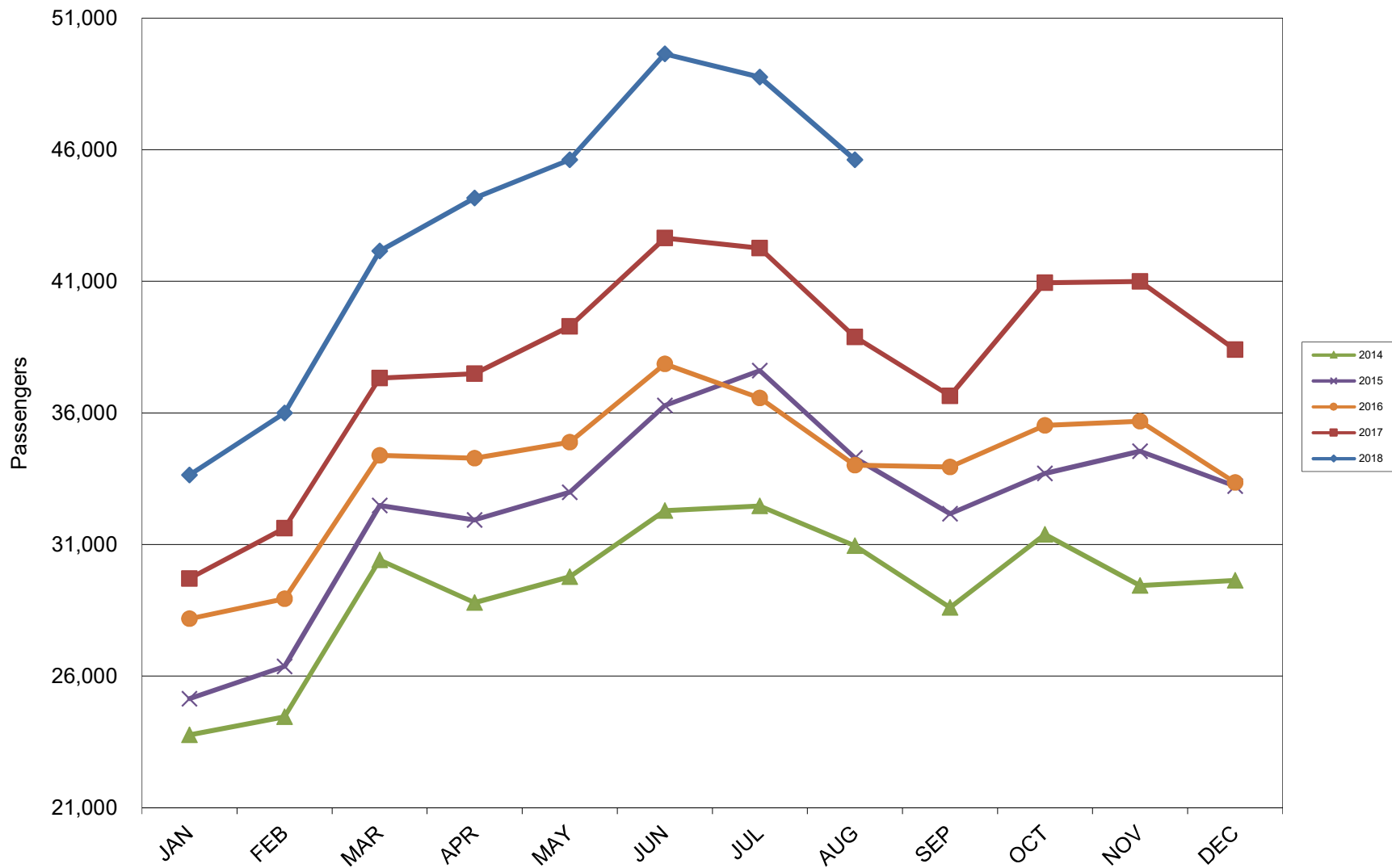
5 Year Trend



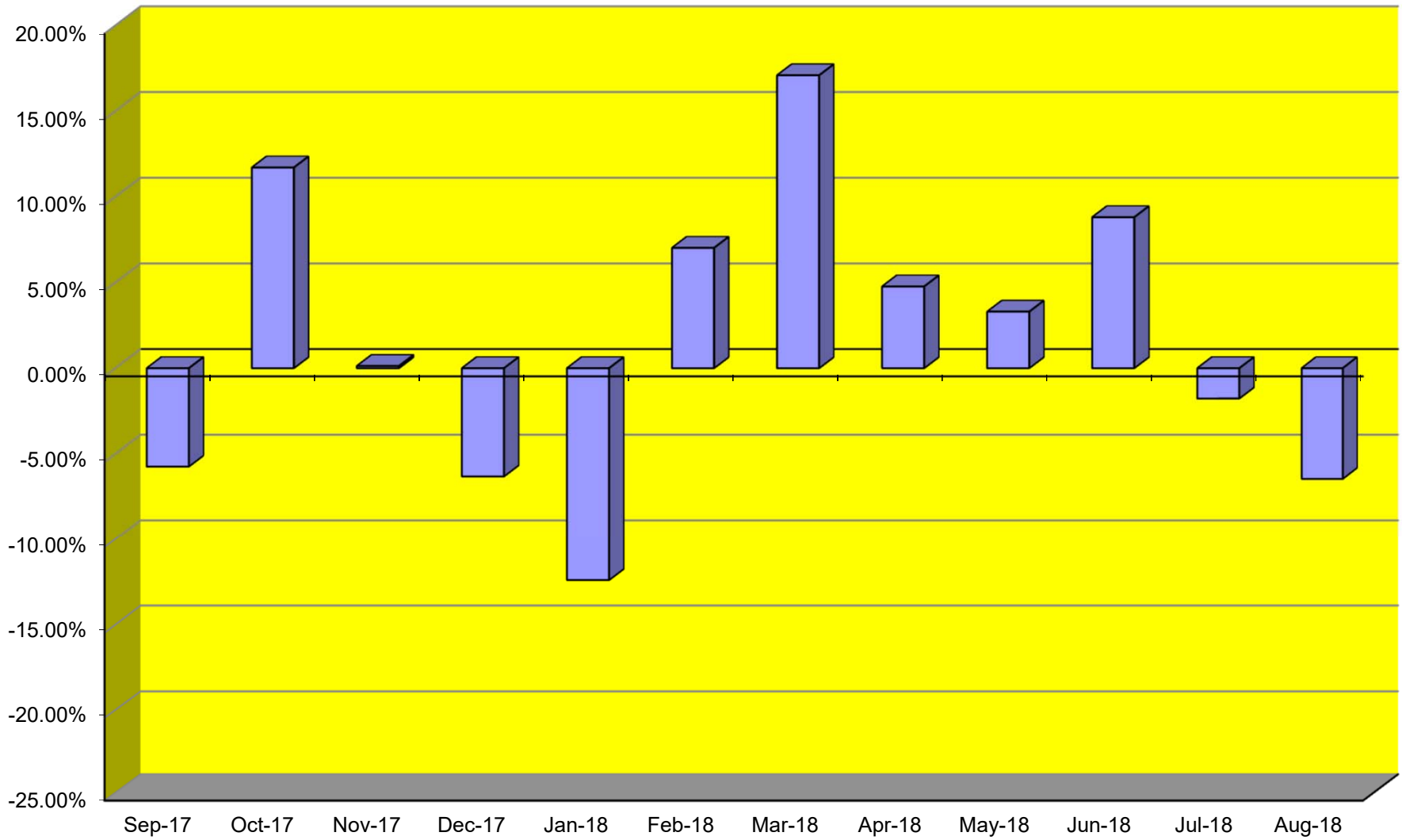
TOTAL CARGO POUNDAGE - AUSTIN, TEXAS



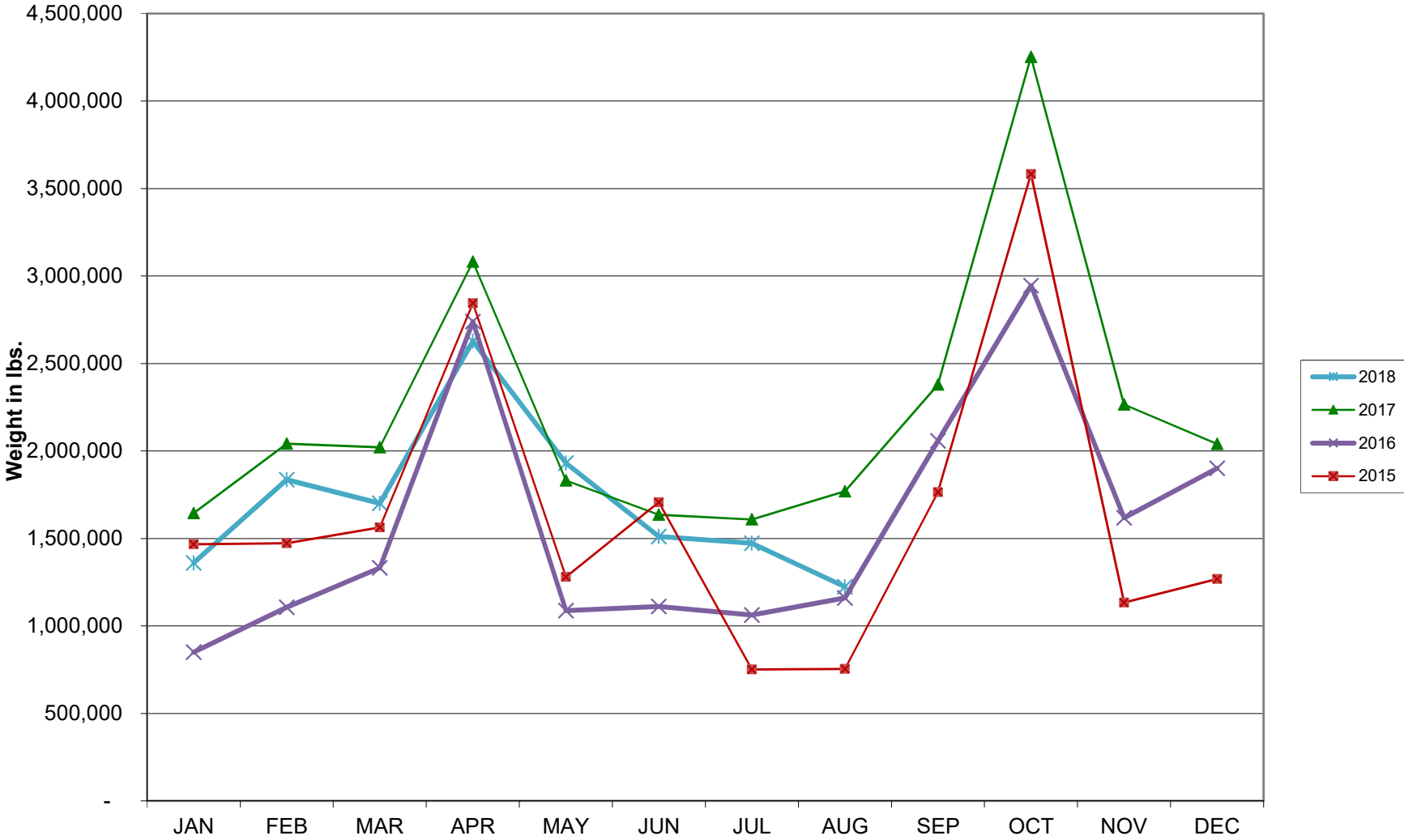
Average Daily Passengers



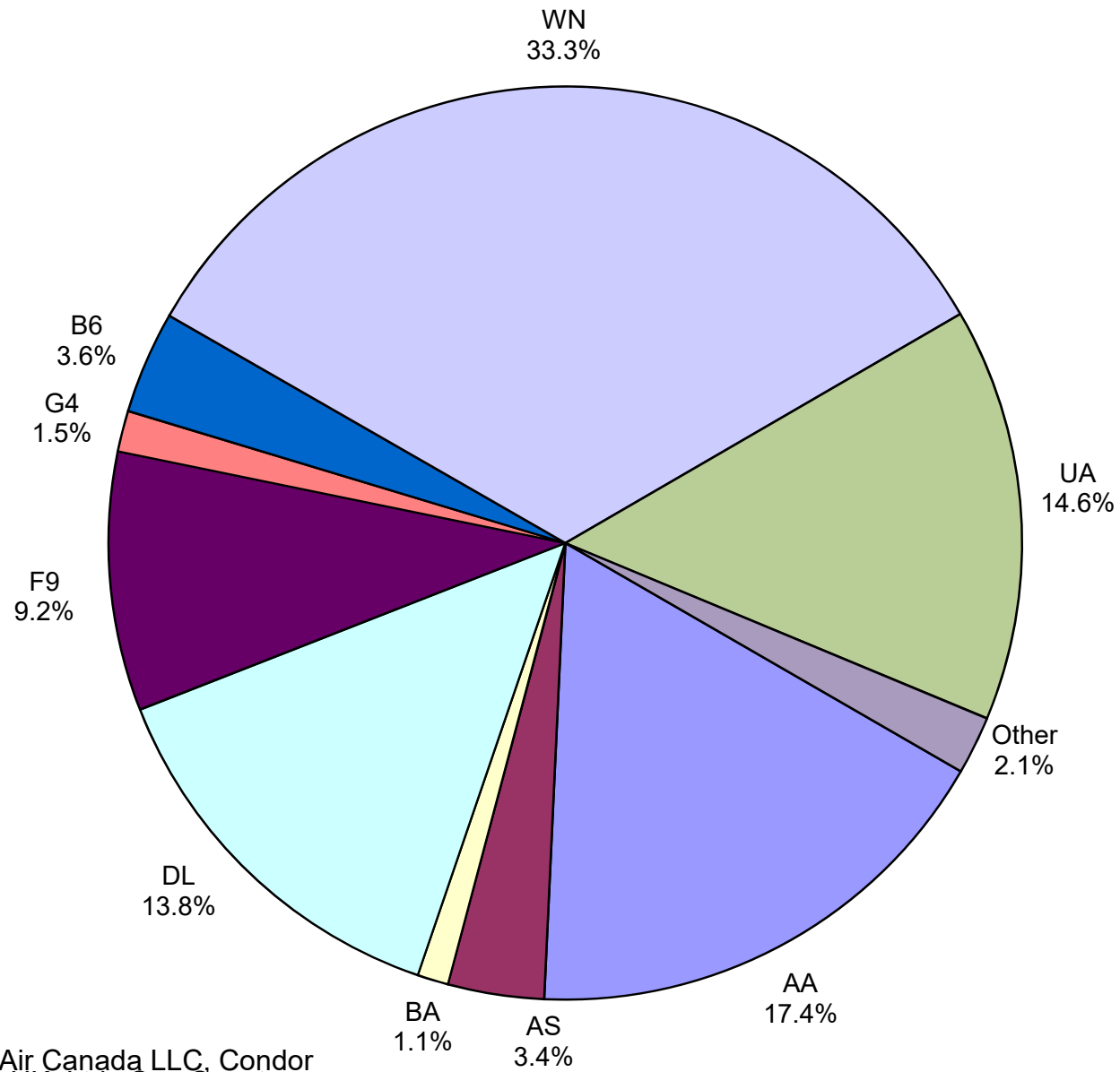
Monthly % Change in Average Daily Passengers



HISTORY OF INTERNATIONAL AIR CARGO



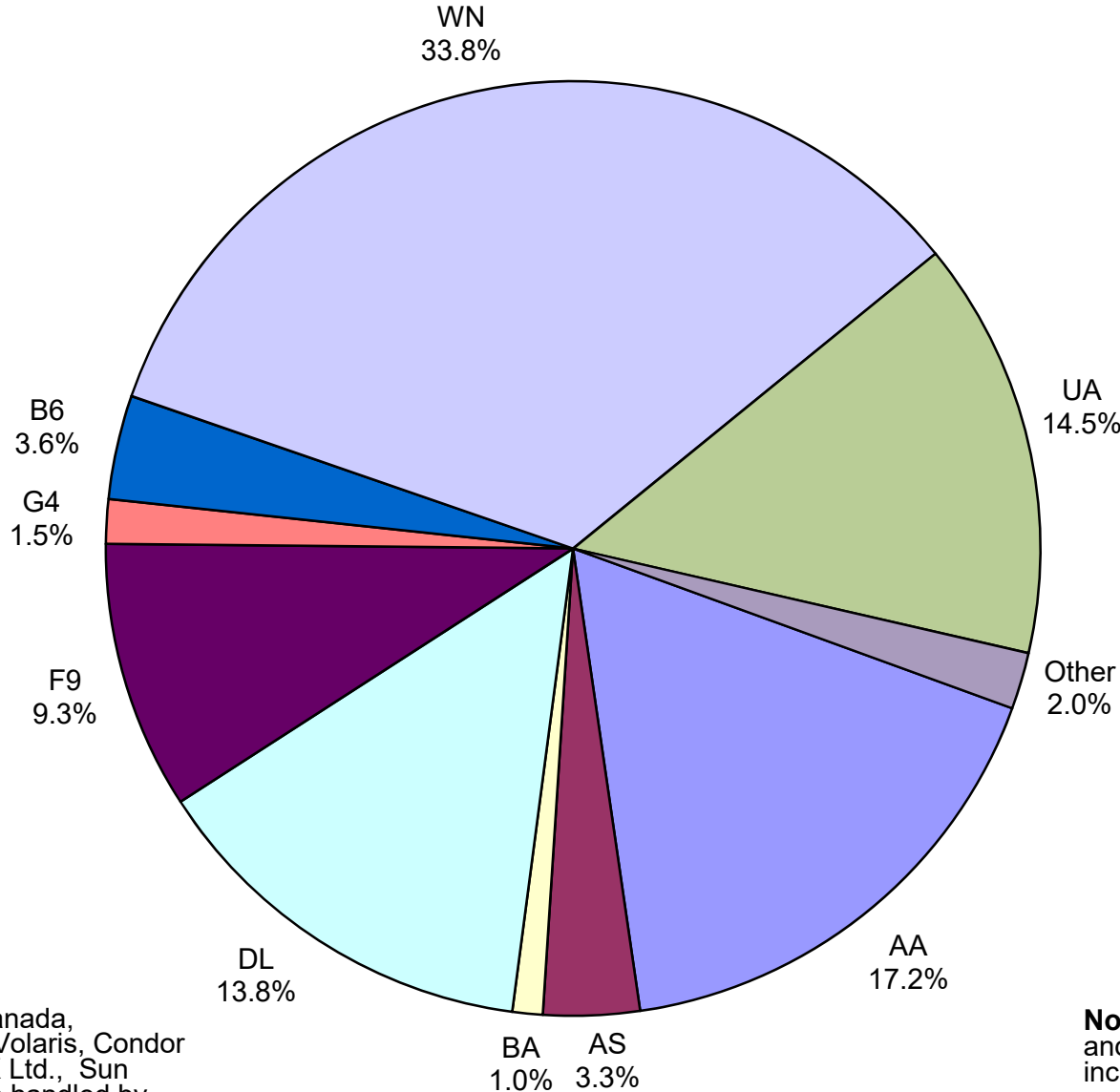
Total Passengers August 2018



Other: Aeromexico, Air Canada LLC, Condor Airlines, Norwegian Air UK, Ltd., Sun Country, Vacation Express handled by Swift Air, VIA Airlines and Concesionaria Vuela dba Volaris

Note: American, Delta and United Airlines percentages include Affiliates.

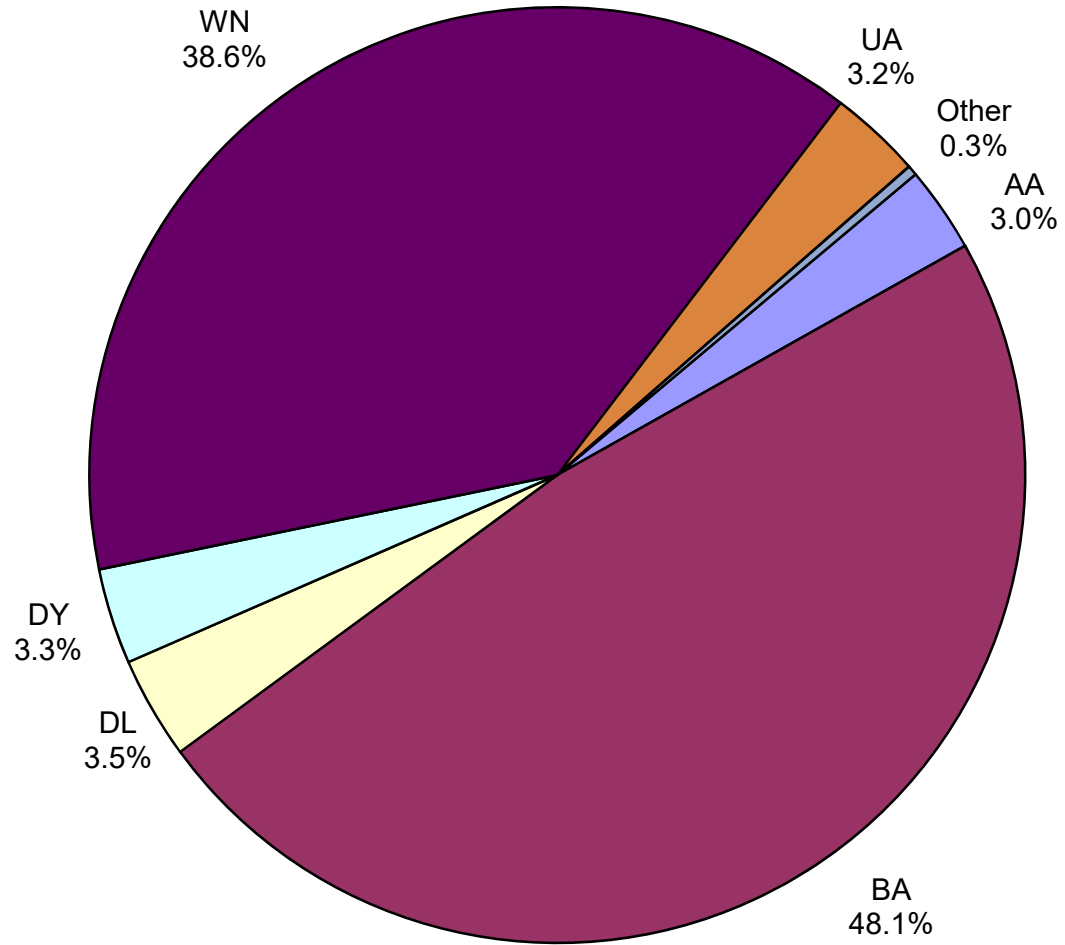
**All Passenger Carriers
Enplaned Revenue Passengers
August 2018**



Other: Aeromexico, Air Canada, Concesionaria Vuela dba Volaris, Condor Airlines, Norwegian Air UK Ltd., Sun Country, Vacation Express handled by Swift Air and VIA Airlines

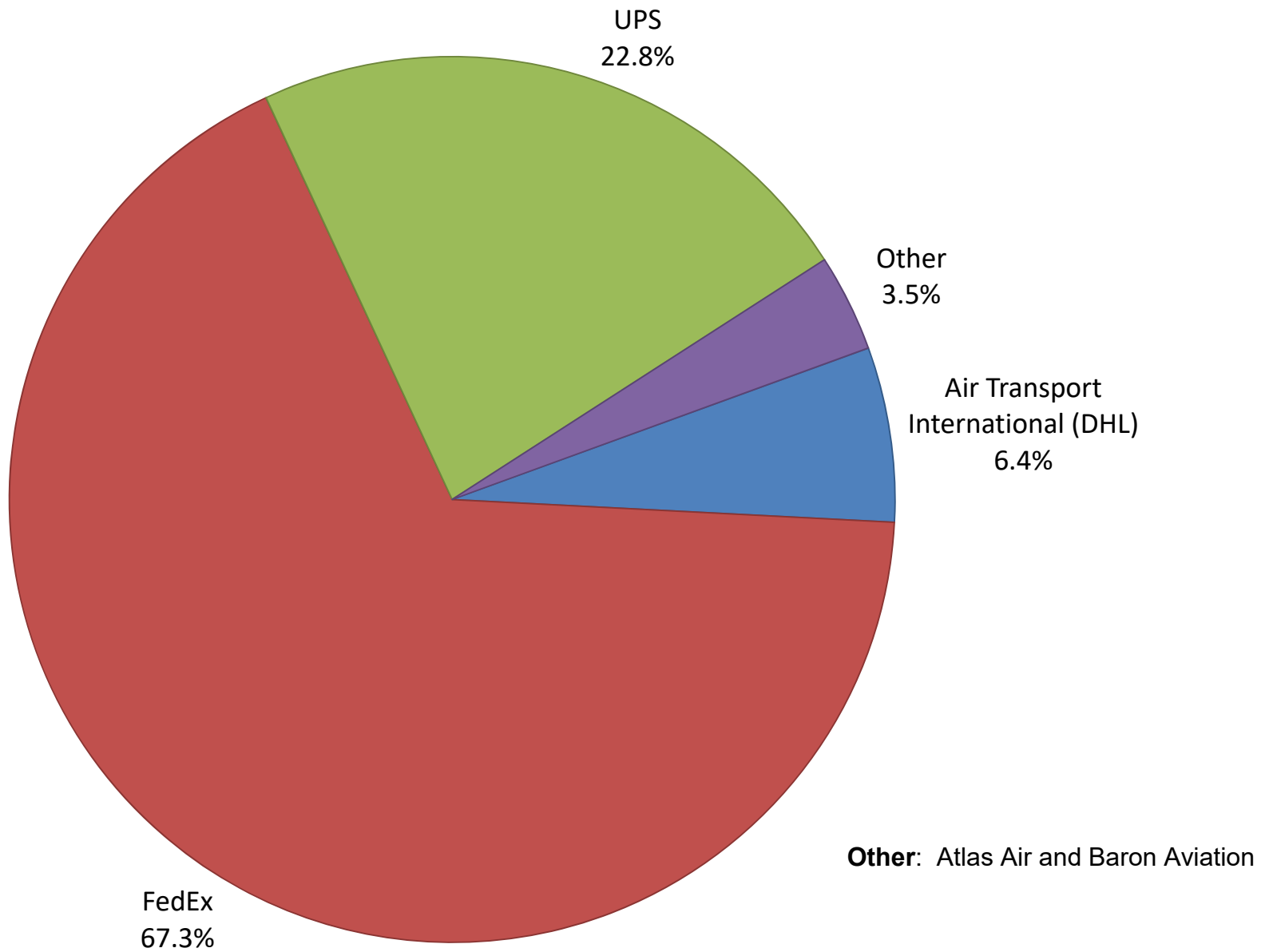
Note: American/US Airways, Delta and United Airlines percentages include Affiliates.

**AUS Belly Freight Market Shares
August 2018**

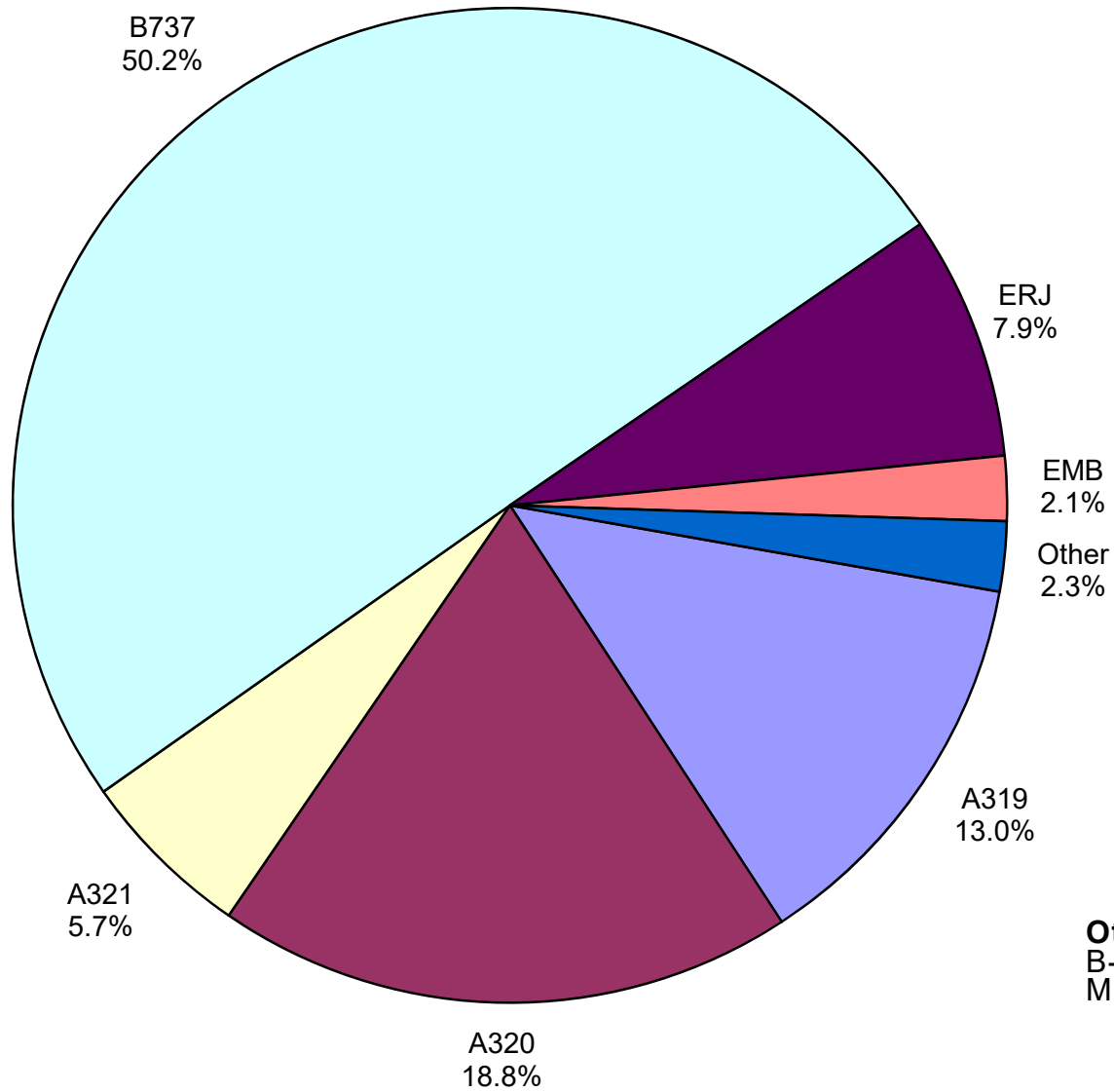


Other = Alaska Airlines

Air Cargo Market Share August 2018

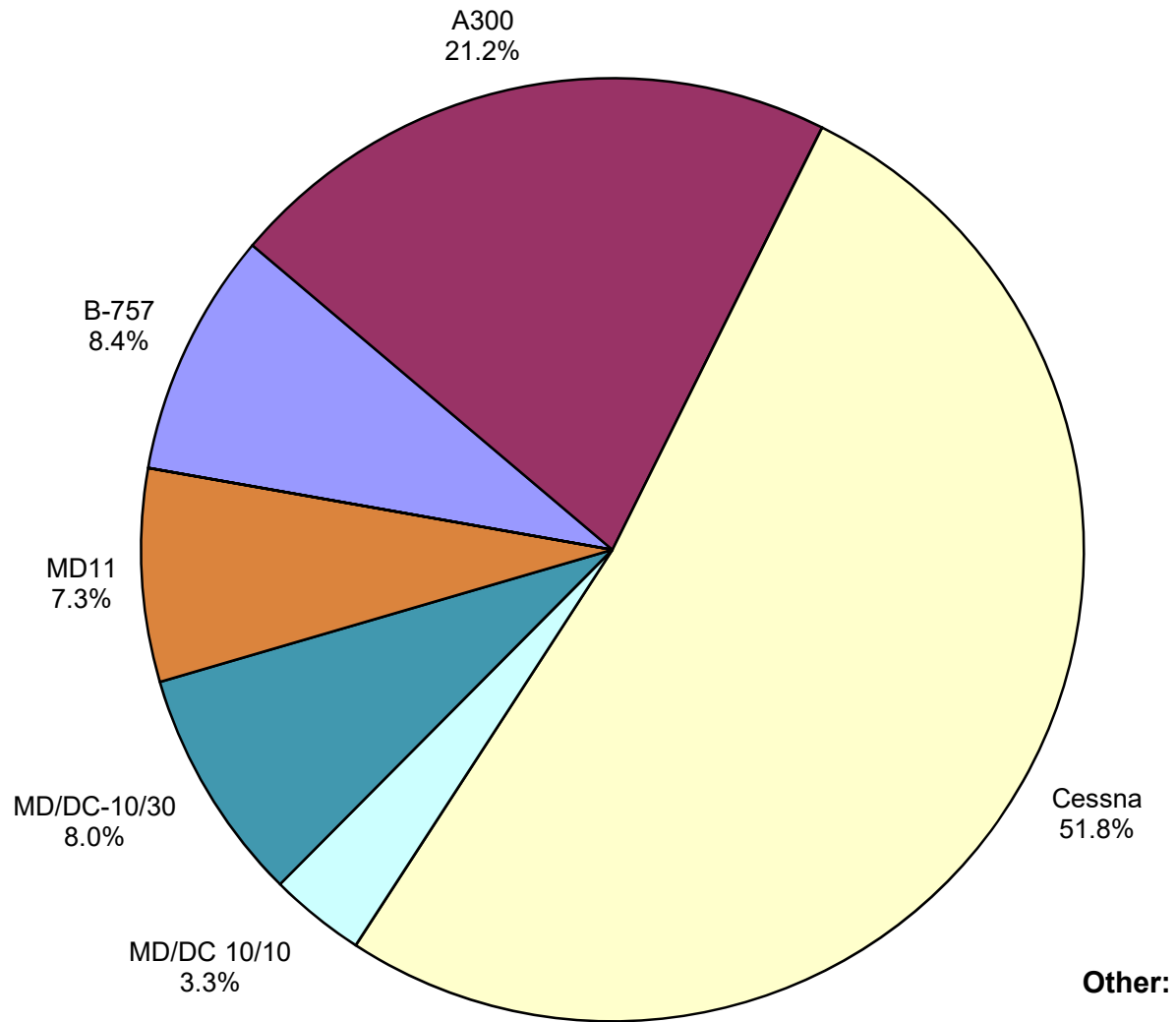


**AUS Scheduled Passenger Aircraft Fleet Mix
August 2018**



Other: B-717, B-747-400,
B-767, B-787-900, CRJ,
MD-83, MD-88 and MD-90

**AUS Scheduled Cargo Aircraft Fleet Mix
August 2018**



Austin-Bergstrom International Airport

PAX Detail Report - August, 2018

Company	08/2018	08/2017	Period		YTD 2018	YTD 2017	YTD		2018 Share	2017 Share	Share Diff
			Difference	Change			Difference	Change			
ABC Aerolineas S.A. de C.V.	0	0	0	0.0	41	0	41	0.0	0.0	0.0	0.0
Aerovías de Mexico S.A. de C.V.	4,316	3,214	1,102	34.3	30,019	25,251	4,768	18.9	0.3	0.3	0.0
Air Canada	4,097	3,490	607	17.4	31,333	27,384	3,949	14.4	0.3	0.3	0.0
Alaska Airlines	48,101	23,566	24,535	104.1	365,602	168,045	197,557	117.6	3.5	1.8	1.6
Allegiant Air	20,542	20,768	-226	-1.1	217,044	181,088	35,956	19.9	2.1	2.0	0.1
American Airlines	246,070	237,581	8,489	3.6	1,850,449	1,729,495	120,954	7.0	17.6	19.0	-1.4
British Airways	15,478	10,481	4,997	47.7	113,063	85,346	27,717	32.5	1.1	0.9	0.1
Concesionaria Vuela Compañía de Aviación, S.A.P.I. de C.V.	1,513	1,436	77	5.4	10,869	11,019	-150	-1.4	0.1	0.1	0.0
Condor Airlines	5,778	3,727	2,051	55.0	15,706	15,536	170	1.1	0.1	0.2	0.0
Delta Air Lines	195,507	161,521	33,986	21.0	1,408,450	1,151,599	256,851	22.3	13.4	12.7	0.7
Frontier Airlines	129,544	44,830	84,714	189.0	744,890	308,566	436,324	141.4	7.1	3.4	3.7
Iberia Airlines	0	0	0	0.0	0	245	-245	-100.0	0.0	0.0	0.0
JetBlue Airways	51,279	53,292	-2,013	-3.8	401,006	409,557	-8,551	-2.1	3.8	4.5	-0.7
Miami Air International	0	0	0	0.0	309	0	309	0.0	0.0	0.0	0.0
Norwegian Air UK LTD	7,286	0	7,286	0.0	39,792	0	39,792	0.0	0.4	0.0	0.4
Scandinavian Airlines	0	0	0	0.0	697	0	697	0.0	0.0	0.0	0.0
Southwest Airlines	471,333	439,559	31,774	7.2	3,688,979	3,390,430	298,549	8.8	35.1	37.3	-2.2
Sun Country Airlines	3,272	328	2,944	897.6	17,391	3,339	14,052	420.8	0.2	0.0	0.1
Swift Air	0	288	-288	-100.0	1,142	994	148	14.9	0.0	0.0	0.0
Texas Sky	0	0	0	0.0	0	604	-604	-100.0	0.0	0.0	0.0
United Airlines	207,026	188,682	18,344	9.7	1,547,493	1,485,063	62,430	4.2	14.7	16.3	-1.6
Vacation Express	406	0	406	0.0	2,758	0	2,758	0.0	0.0	0.0	0.0
VIA Airlines	2,435	325	2,110	649.2	13,513	1,908	11,605	608.2	0.1	0.0	0.1
Virgin America	0	12,253	-12,253	-100.0	11,117	104,762	-93,645	-89.4	0.1	1.2	-1.0
Xtra Airways/Casino Express	0	0	0	0.0	0	136	-136	-100.0	0.0	0.0	0.0
Report Totals	1,413,983	1,205,341	208,642	17.3%	10,511,663	9,100,367	1,411,296	15.5%			

Statistics Included in Report:

Domestic Passengers:	Enplaned Revenue, Deplaned Revenue, Enplaned Non-Revenue, Deplaned Non-Revenue
International Passengers:	Enplaned Revenue, Deplaned Revenue, Enplaned Non-Revenue, Deplaned Non-Revenue
International Pre-Cleared Passengers:	Enplaned Revenue, Deplaned Revenue, Enplaned Non-Revenue, Deplaned Non-Revenue
South Terminal Domestic Passengers:	Enplaned Revenue, Deplaned Revenue, Enplaned Non-Revenue, Deplaned Non-Revenue

Austin-Bergstrom International Airport

Summary Landing Report

Landing Type: Total

Month	2018		2017		2016		% Change 2018 - 2017		% Change 2017 - 2016	
	Count	Weight	Count	Weight	Count	Weight	Count	Weight	Count	Weight
January	5,086	688,923,110	4,768	612,688,871	4,622	560,718,408	6.67%	12.44%	3.16%	9.27%
February	4,706	637,500,756	4,357	552,711,639	4,387	527,452,920	8.01%	15.34%	-0.68%	4.79%
March	5,643	760,648,260	5,307	685,661,659	5,151	639,655,137	6.33%	10.94%	3.03%	7.19%
April	5,797	793,367,736	5,179	689,402,051	4,892	614,643,711	11.93%	15.08%	5.87%	12.16%
May	6,117	831,431,763	5,529	736,484,083	5,096	630,853,941	10.63%	12.89%	8.50%	16.74%
June	6,211	852,438,818	5,603	752,628,599	5,179	651,537,449	10.85%	13.26%	8.19%	15.52%
July	6,346	869,502,671	5,698	763,088,836	5,233	663,015,597	11.37%	13.95%	8.89%	15.09%
August	6,245	861,046,997	5,490	741,110,019	5,181	660,099,361	13.75%	16.18%	5.96%	12.27%
September			5,046	679,381,339	4,738	623,397,035			6.50%	8.98%
October			5,448	743,973,610	4,923	649,182,343			10.66%	14.60%
November			5,289	718,179,948	4,775	624,303,554			10.76%	15.04%
December			5,442	737,424,963	4,893	629,611,090			11.22%	17.12%
Totals for Selected Period	46,151	6,294,860,111	41,931	5,533,775,757	39,741	4,947,976,524	10.06%	13.75%	5.51%	11.84%
Yearly Totals	46,151	6,294,860,111	63,156	8,412,735,617	59,070	7,474,470,546			6.92%	12.55%