

# Austin-Bergstrom International Airport

## Aviation Activity Report

### Calendar Year 2016 vs 2015

|                                       | 12/2016          | 12/2015          | Percent Change | 01/2016 - 12/2016 | 01/2015 - 12/2015 | Percent Change |
|---------------------------------------|------------------|------------------|----------------|-------------------|-------------------|----------------|
| <b>Passenger Activity</b>             |                  |                  |                |                   |                   |                |
| Domestic Enplaned Revenue             | 501,413          | 504,512          | -0.61          | 5,960,465         | 5,717,095         | 4.26           |
| Domestic Deplaned Revenue             | 483,986          | 483,208          | 0.16           | 5,937,917         | 5,683,842         | 4.47           |
| International Enplaned Revenue        | 12,072           | 9,450            | 27.75          | 112,910           | 109,484           | 3.13           |
| International Deplaned Revenue        | 10,915           | 8,503            | 28.37          | 118,184           | 108,744           | 8.68           |
| Domestic Enplaned Non-Revenue         | 11,074           | 10,796           | 2.58           | 131,708           | 127,921           | 2.96           |
| Domestic Deplaned Non-Revenue         | 11,020           | 10,583           | 4.13           | 131,465           | 125,041           | 5.14           |
| International Enplaned Non-Revenue    | 66               | 75               | -12.00         | 939               | 916               | 2.51           |
| International Deplaned Non-Revenue    | 64               | 80               | -20.00         | 928               | 829               | 11.94          |
| Intl Enplaned Pre-Cleared Revenue     | 1,557            | 1,011            | 54.01          | 19,673            | 10,199            | 92.89          |
| Intl Deplaned Pre-Cleared Revenue     | 1,834            | 1,517            | 20.90          | 22,034            | 12,920            | 70.54          |
| Intl Enplaned Pre-Cleared Non-Revenue | 29               | 29               | 0.00           | 307               | 482               | -36.31         |
| Intl Deplaned Pre-Cleared Non-Revenue | 37               | 39               | -5.13          | 319               | 486               | -34.36         |
| <b>Passenger Totals</b>               | <b>1,034,067</b> | <b>1,029,803</b> | <b>0.41</b>    | <b>12,436,849</b> | <b>11,897,959</b> | <b>4.53</b>    |
| <i>Enplaned Passenger Totals</i>      | <i>526,211</i>   | <i>525,873</i>   | <i>.06</i>     | <i>6,226,002</i>  | <i>5,966,097</i>  | <i>4.36</i>    |
| <i>Deplaned Passenger Totals</i>      | <i>507,856</i>   | <i>503,930</i>   | <i>.78</i>     | <i>6,210,847</i>  | <i>5,931,862</i>  | <i>4.70</i>    |
| <i>Domestic Passenger Totals</i>      | <i>1,007,493</i> | <i>1,009,099</i> | <i>-.16</i>    | <i>12,161,555</i> | <i>11,653,899</i> | <i>4.36</i>    |
| <i>International Passenger Totals</i> | <i>26,574</i>    | <i>20,704</i>    | <i>28.35</i>   | <i>275,294</i>    | <i>244,060</i>    | <i>12.80</i>   |

**CURRENT PASSENGER RECORD = 1,165,811 RECORD SET = JULY 2015**

### Aircraft Operations

|                         |               |               |              |                |                |             |
|-------------------------|---------------|---------------|--------------|----------------|----------------|-------------|
| Air Carrier             | 9,540         | 9,850         | -3.15        | 113,427        | 114,068        | -0.56       |
| Commuter & Air Taxi     | 1,258         | 1,323         | -4.91        | 16,322         | 15,358         | 6.28        |
| Military                | 603           | 752           | -19.81       | 10,354         | 8,750          | 18.33       |
| General Aviation        |               |               |              |                |                |             |
| Itinerant               | 3,429         | 3,705         | -7.45        | 49,213         | 49,146         | 0.14        |
| Local                   | 150           | 274           | -45.26       | 2,716          | 3,871          | -29.84      |
| Total G.A.              | 3,579         | 3,979         | -10.05       | 51,929         | 53,017         | -2.05       |
| <b>Total Operations</b> | <b>14,980</b> | <b>15,904</b> | <b>-5.81</b> | <b>192,032</b> | <b>191,193</b> | <b>0.44</b> |

# Austin-Bergstrom International Airport

## Aviation Activity Report

### Calendar Year 2016 vs 2015

|  | 12/2016           | 12/2015           | Percent Change | 01/2016 - 12/2016  | 01/2015 - 12/2015  | Percent Change |
|--|-------------------|-------------------|----------------|--------------------|--------------------|----------------|
| <b><u>Cargo Activity</u></b>                     |                   |                   |                |                    |                    |                |
| Mail   |                   |                   |                |                    |                    |                |
| Domestic Enplaned Mail                           | 210,594           | 199,024           | 5.81           | 1,699,864          | 2,585,382          | -34.25         |
| Domestic Deplaned Mail                           | 325,370           | 254,486           | 27.85          | 3,053,925          | 3,544,422          | -13.84         |
| International Enplaned Mail                      | 0                 | 0                 | 0.00           | 0                  | 0                  | 0.00           |
| International Deplaned Mail                      | 0                 | 0                 | 0.00           | 2                  | 0                  | 0.00           |
| <b>Mail Totals</b>                               | <b>535,964</b>    | <b>453,510</b>    | <b>18.18</b>   | <b>4,753,791</b>   | <b>6,129,804</b>   | <b>-22.45</b>  |
| Cargo  |                   |                   |                |                    |                    |                |
| Domestic Enplaned Cargo                          | 5,382,879         | 5,066,194         | 6.25           | 62,582,157         | 62,131,764         | 0.72           |
| Domestic Deplaned Cargo                          | 7,826,890         | 6,055,274         | 29.26          | 80,022,905         | 60,881,653         | 31.44          |
| International Enplaned Cargo                     | 527,282           | 315,230           | 67.27          | 6,007,466          | 6,642,414          | -9.56          |
| International Deplaned Cargo                     | 321,953           | 271,087           | 18.76          | 4,505,762          | 5,381,247          | -16.27         |
| <b>Cargo Totals</b>                              | <b>14,059,004</b> | <b>11,707,785</b> | <b>20.08</b>   | <b>153,118,290</b> | <b>135,037,078</b> | <b>13.39</b>   |
| Belly Freight                                    |                   |                   |                |                    |                    |                |
| Domestic Enplaned Belly Freight                  | 252,270           | 298,691           | -15.54         | 2,907,650          | 3,062,535          | -5.06          |
| Domestic Deplaned Belly Freight                  | 459,994           | 505,983           | -9.09          | 5,502,554          | 5,690,909          | -3.31          |
| International Enplaned Belly Freight             | 194,104           | 207,555           | -6.48          | 1,736,088          | 3,062,588          | -43.31         |
| International Deplaned Belly Freight             | 857,021           | 474,272           | 80.70          | 6,721,309          | 4,501,752          | 49.30          |
| <b>Belly Freight Totals</b>                      | <b>1,763,389</b>  | <b>1,486,501</b>  | <b>18.63</b>   | <b>16,867,601</b>  | <b>16,317,784</b>  | <b>3.37</b>    |
| <b>Cargo Totals (Mail, Cargo, Belly Freight)</b> | <b>16,358,357</b> | <b>13,647,796</b> | <b>19.86</b>   | <b>174,739,682</b> | <b>157,484,666</b> | <b>10.96</b>   |
| <br>   |                   |                   |                |                    |                    |                |
| <i>Enplaned Cargo Totals</i>                     | <i>6,567,129</i>  | <i>6,086,694</i>  | <i>7.89</i>    | <i>74,933,225</i>  | <i>77,484,683</i>  | <i>-3.29</i>   |
| <i>Deplaned Cargo Totals</i>                     | <i>9,791,228</i>  | <i>7,561,102</i>  | <i>29.49</i>   | <i>99,806,457</i>  | <i>79,999,983</i>  | <i>24.76</i>   |
| <br>   |                   |                   |                |                    |                    |                |
| <i>Domestic Cargo Totals</i>                     | <i>14,457,997</i> | <i>12,379,652</i> | <i>16.79</i>   | <i>155,769,055</i> | <i>137,896,665</i> | <i>12.96</i>   |
| <i>International Cargo Totals</i>                | <i>1,900,360</i>  | <i>1,268,144</i>  | <i>49.85</i>   | <i>18,970,627</i>  | <i>19,588,001</i>  | <i>- 3.15</i>  |

CURRENT CARGO RECORD = 40,215,518

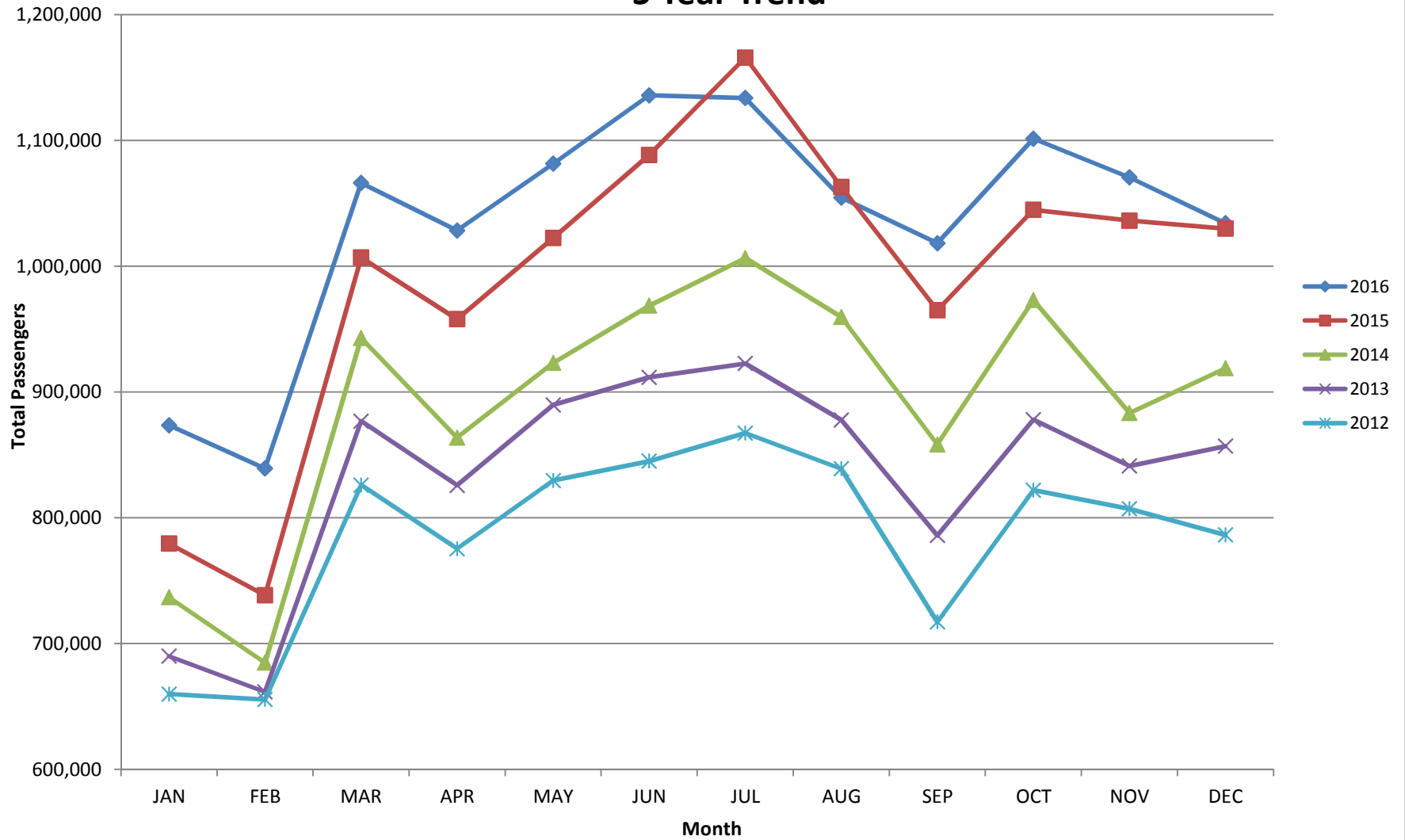
RECORD SET = MARCH 2001

**AUS – Airline Codes**  
December 2016

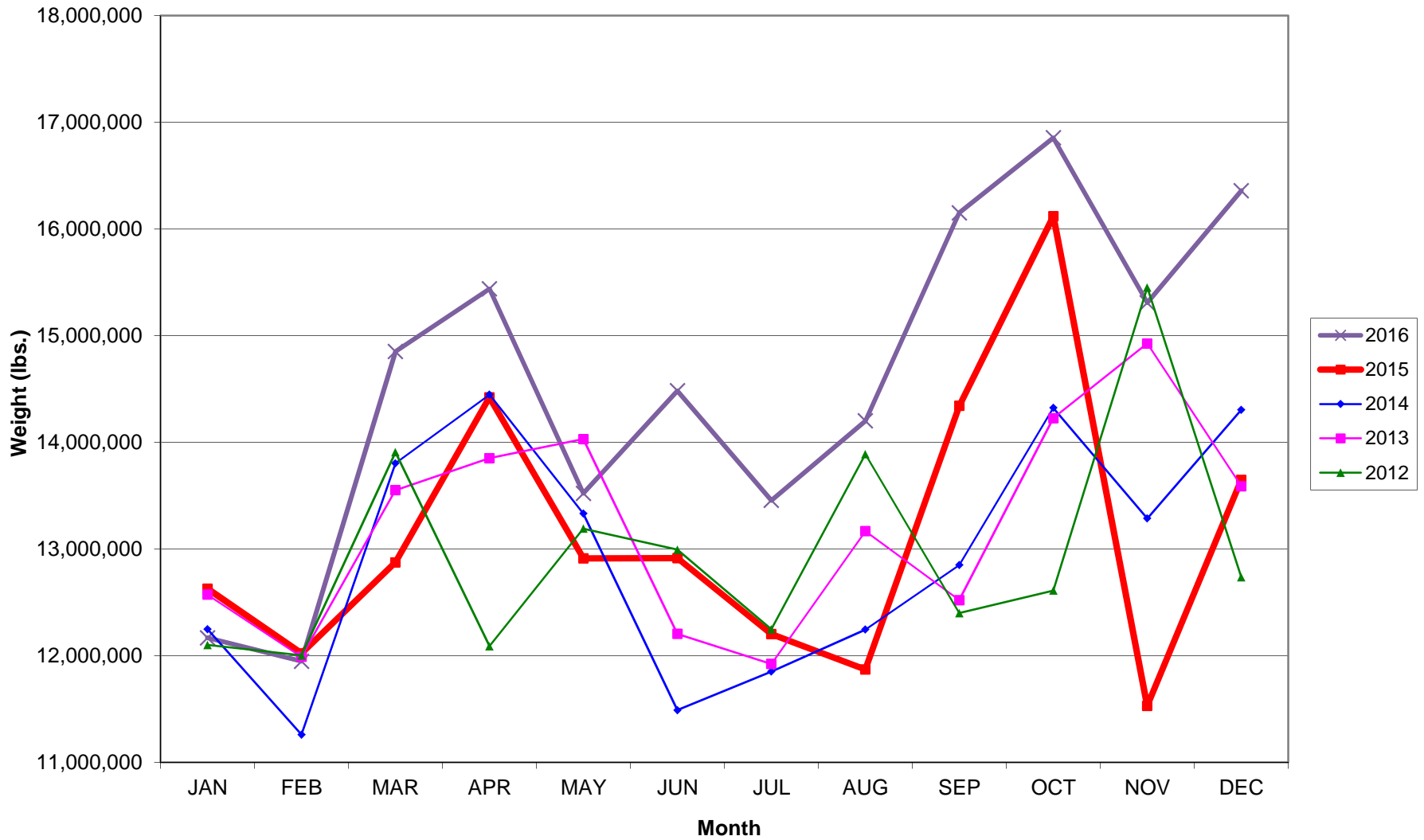
| <b><u>Code</u></b> | <b><u>Carrier</u></b>  |
|--------------------|--|
| AM                 | AeroMexico Airlines  |
| AC                 | Air Canada   |
| AS                 | Alaska Airlines, Inc.  |
| G4                 | Allegiant Air, LLC   |
| AA                 | American Airlines, Inc.  |
| BA                 | British Airways Plc  |
| DL                 | Delta Airlines   |
| F9                 | Frontier Airlines  |
| B6                 | JetBlue Airways Corp.  |
| P1                 | Public Charters, Inc. dba Texas Sky                                |
| WN                 | Southwest Airlines   |
| SY                 | Sun Country Airlines/ MN Airlines, LLC                             |
| UA                 | United Airlines, Inc.  |
| VX                 | Virgin America Inc.  |
| VB                 | VivaAerobus  |
| Y4                 | Volaris/Concesionaria Vuela Compañía de Aviación, S.A.P.I. de C.V. |
| XP                 | Xtra Airways   |

# AUSTIN PASSENGER TRAFFIC

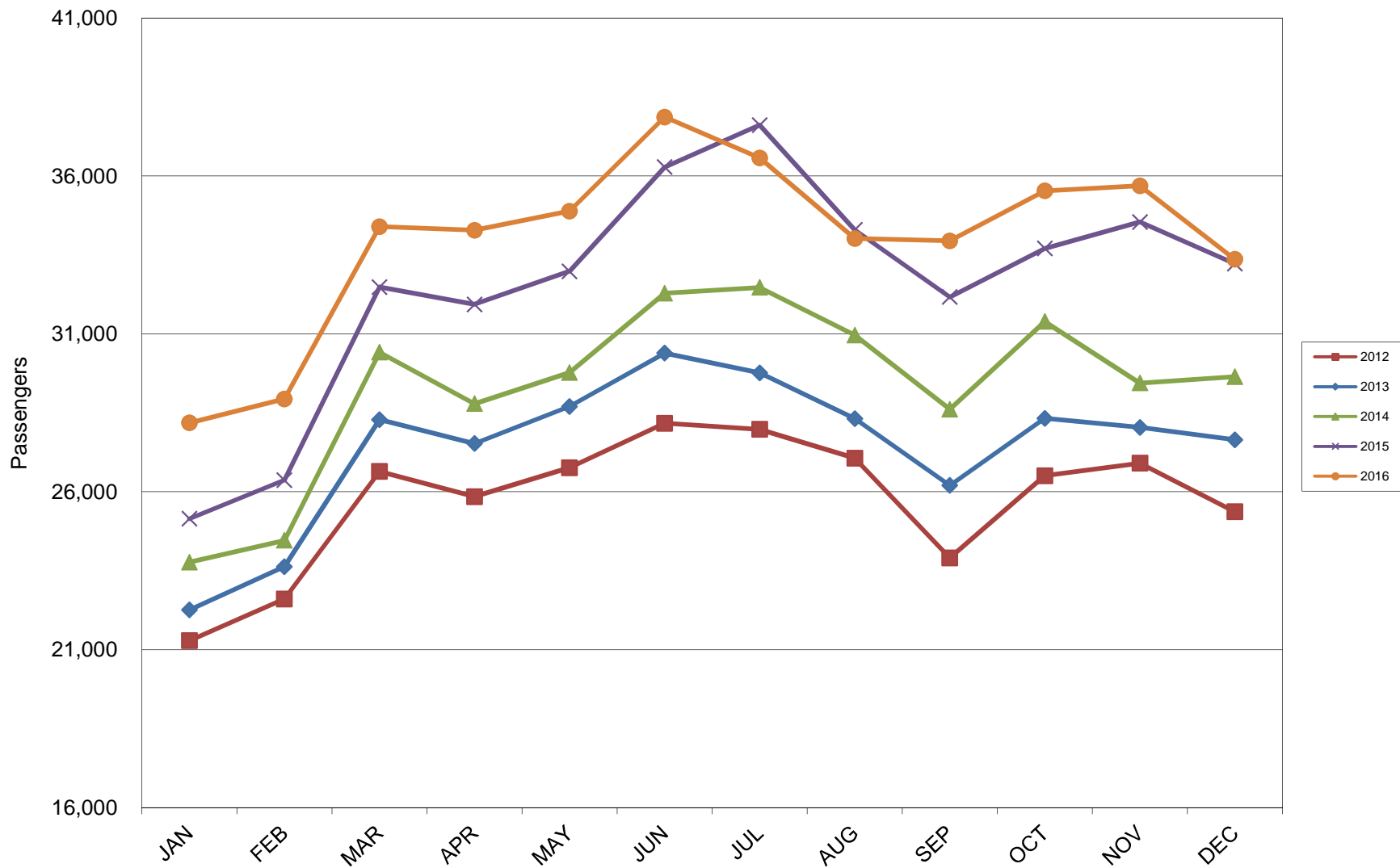
## 5 Year Trend



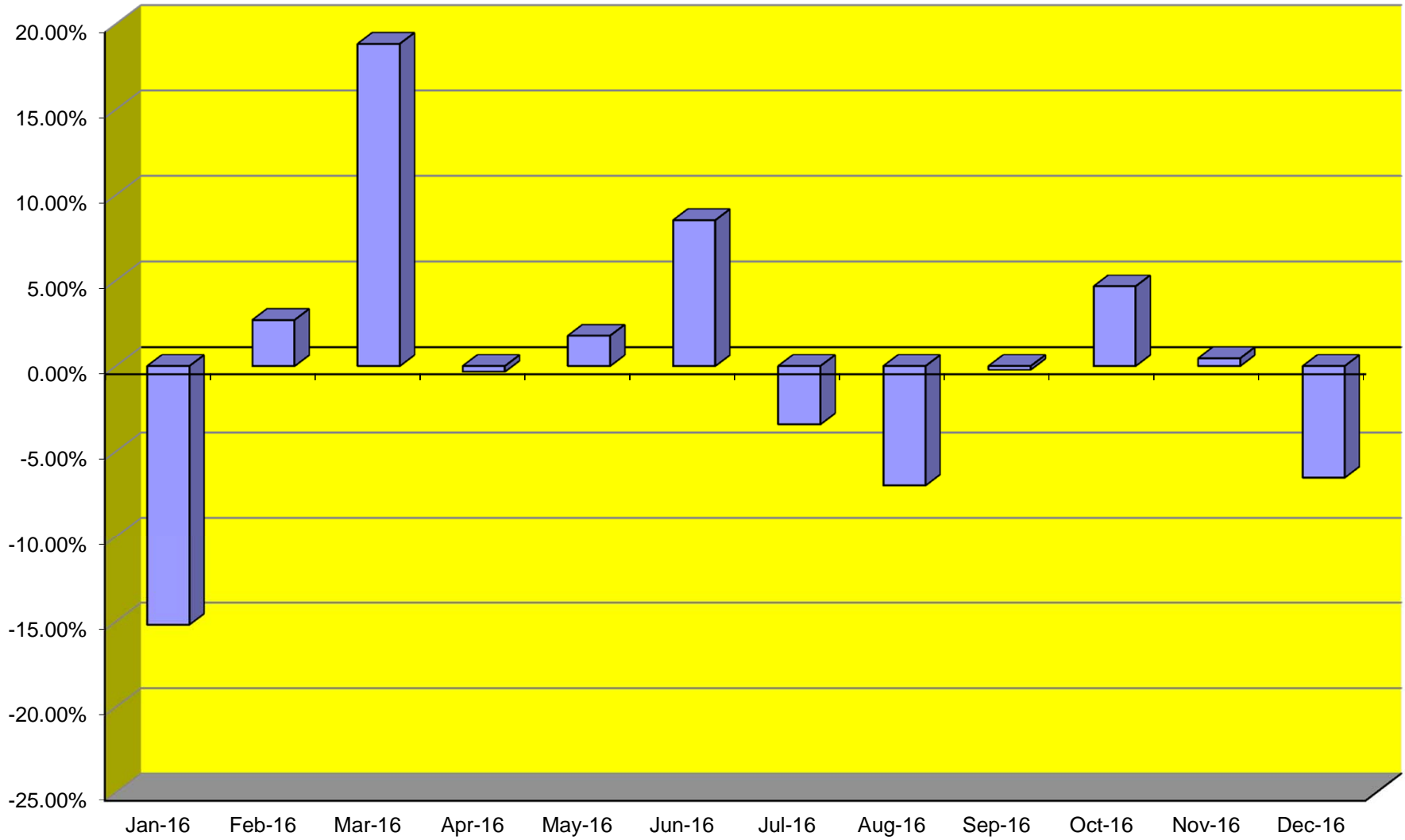
### TOTAL CARGO POUNDAGE - AUSTIN, TEXAS



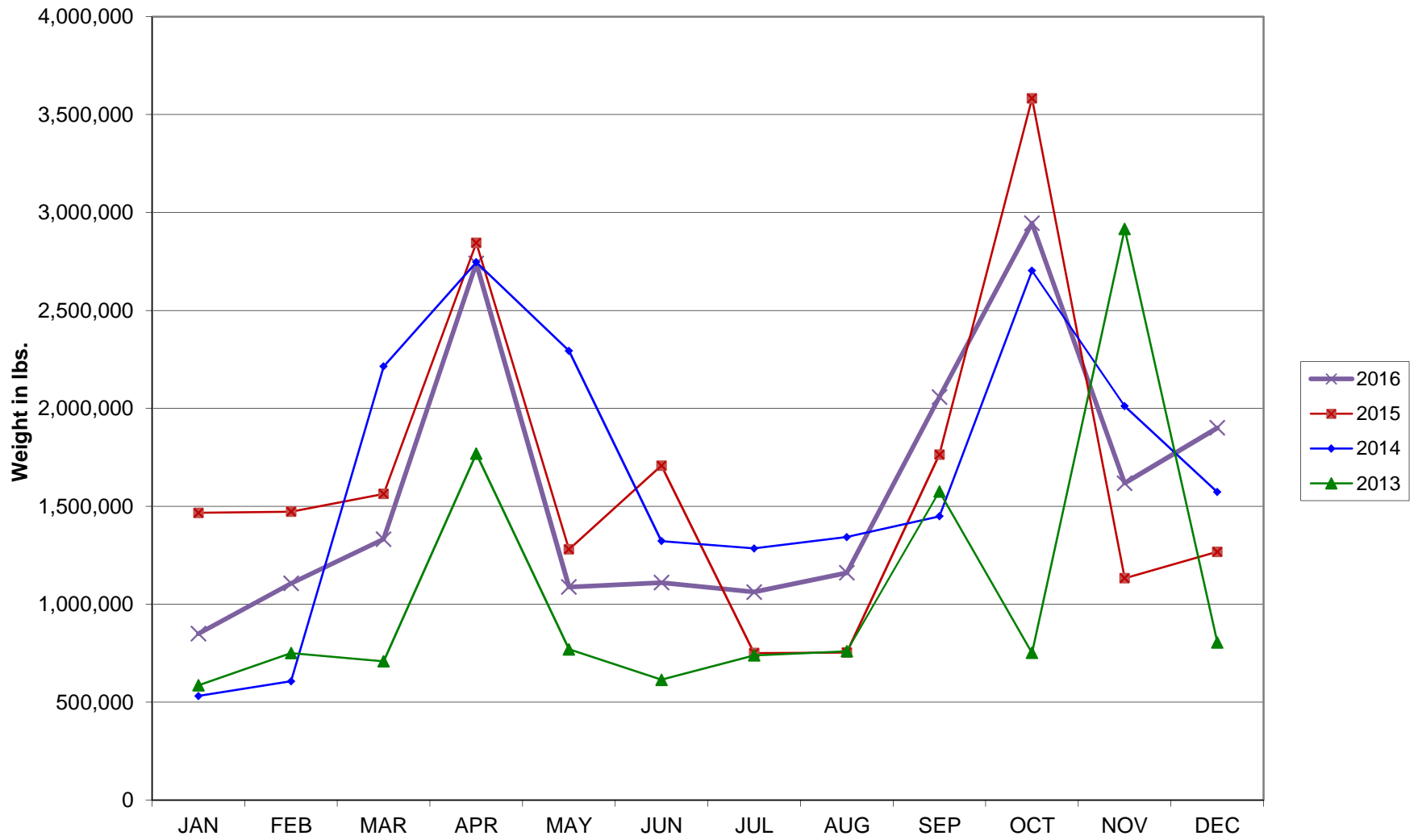
Average Daily Passengers



**Monthly % Change in Average Daily Passengers**

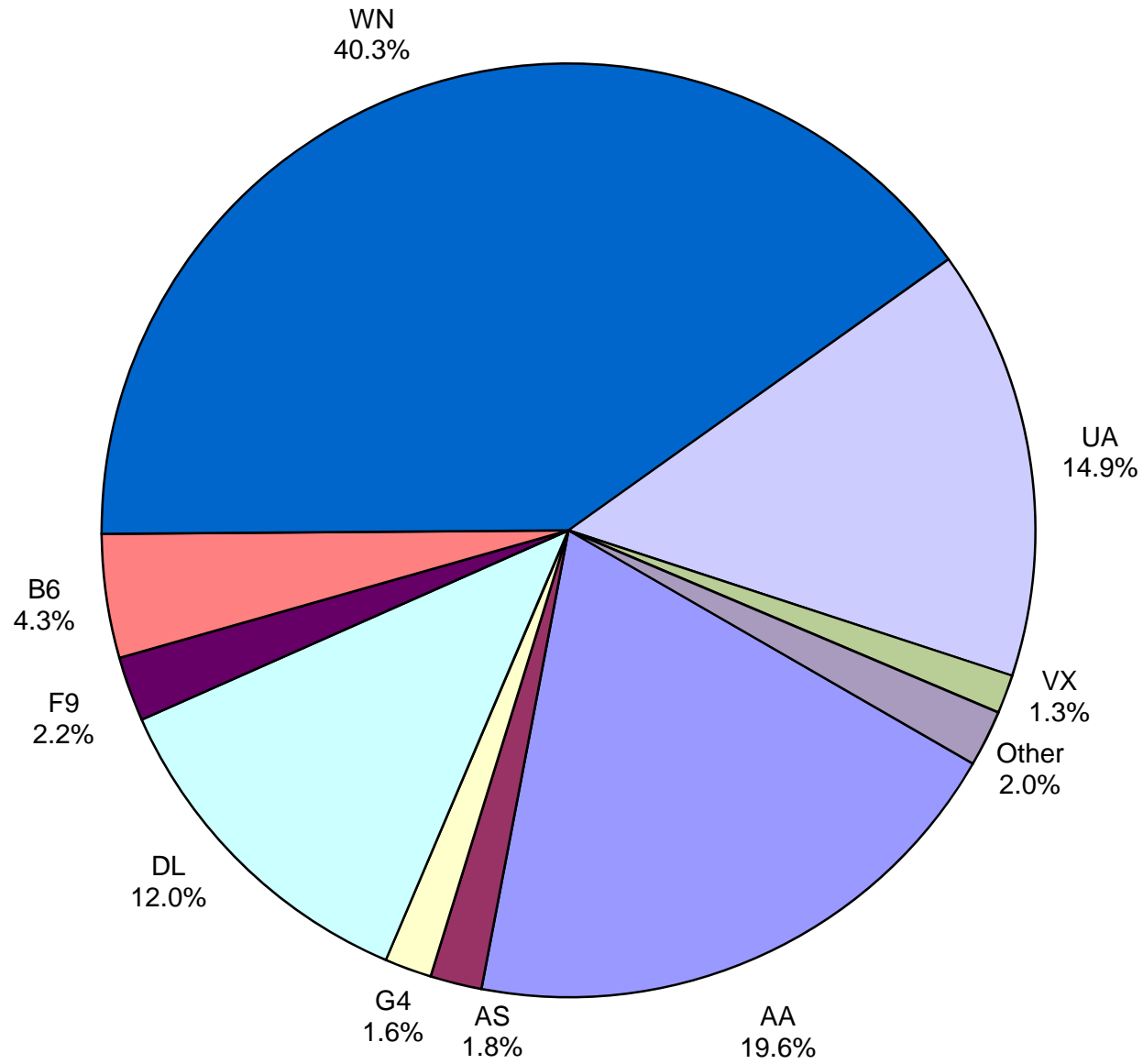


# HISTORY OF INTERNATIONAL AIR CARGO





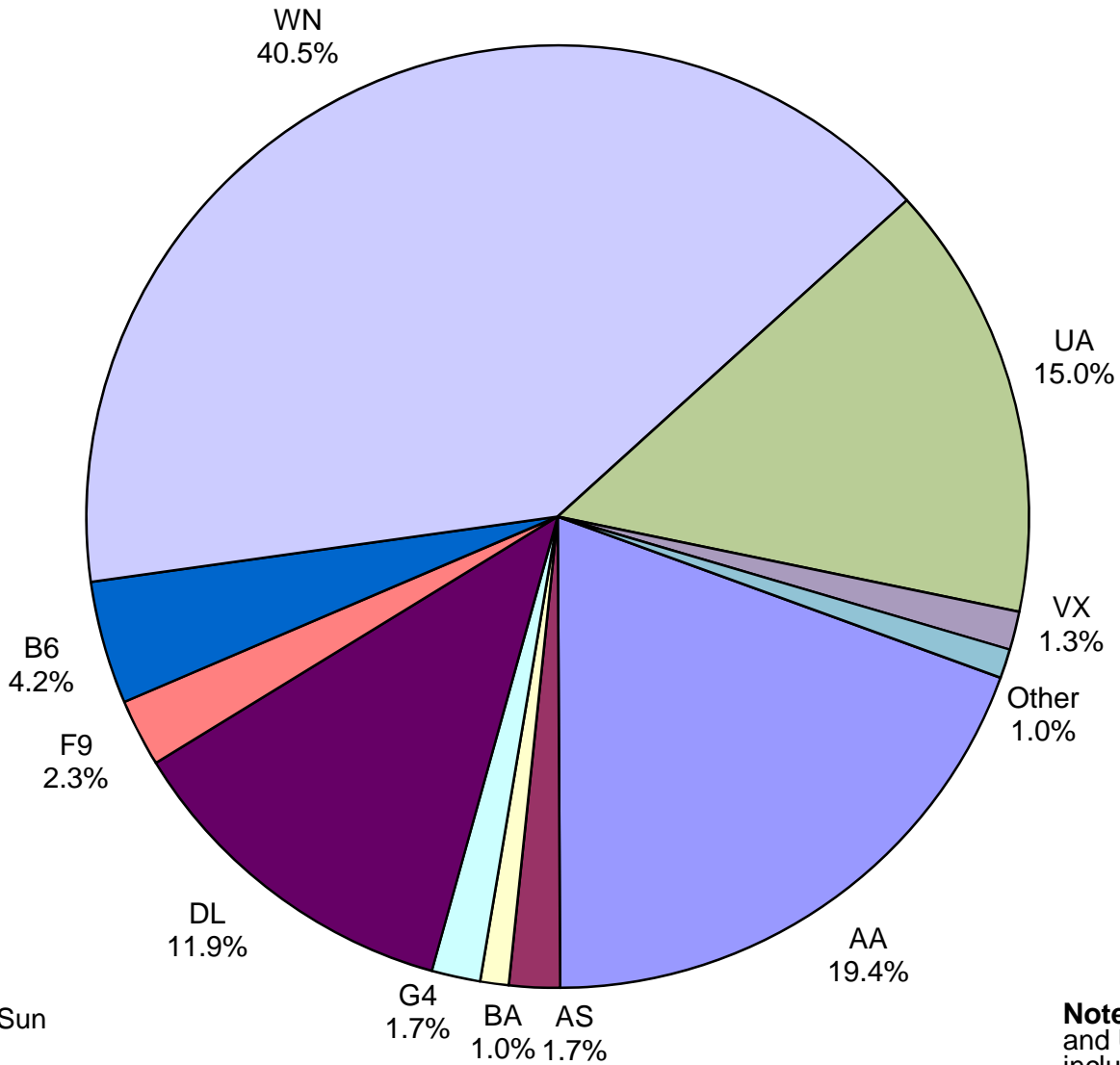
### Total Passengers December 2016



**Other:** Aeromexico, Air Canada, British Airways, Sun Country, Texas Sky, VivaAerobus, Volaris and Xtra Airways

**Note:** American, Delta and United Airlines percentages include Affiliates.

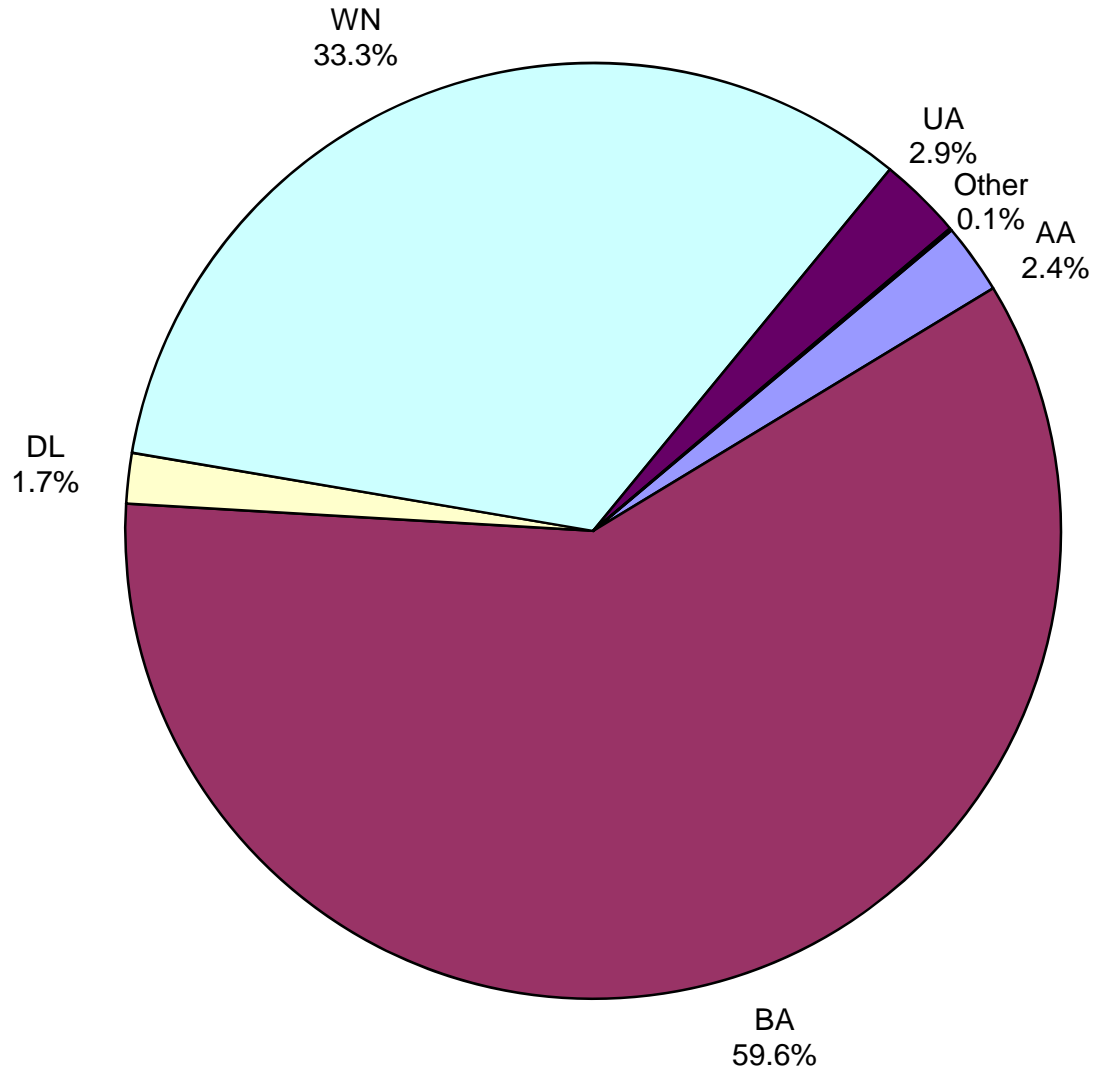
**All Passenger Carriers  
Enplaned Revenue Passengers  
December 2016**



**Other:** Aeromexico, Air Canada, Sun Country, Texas Sky, Volaris, Xtra Airways

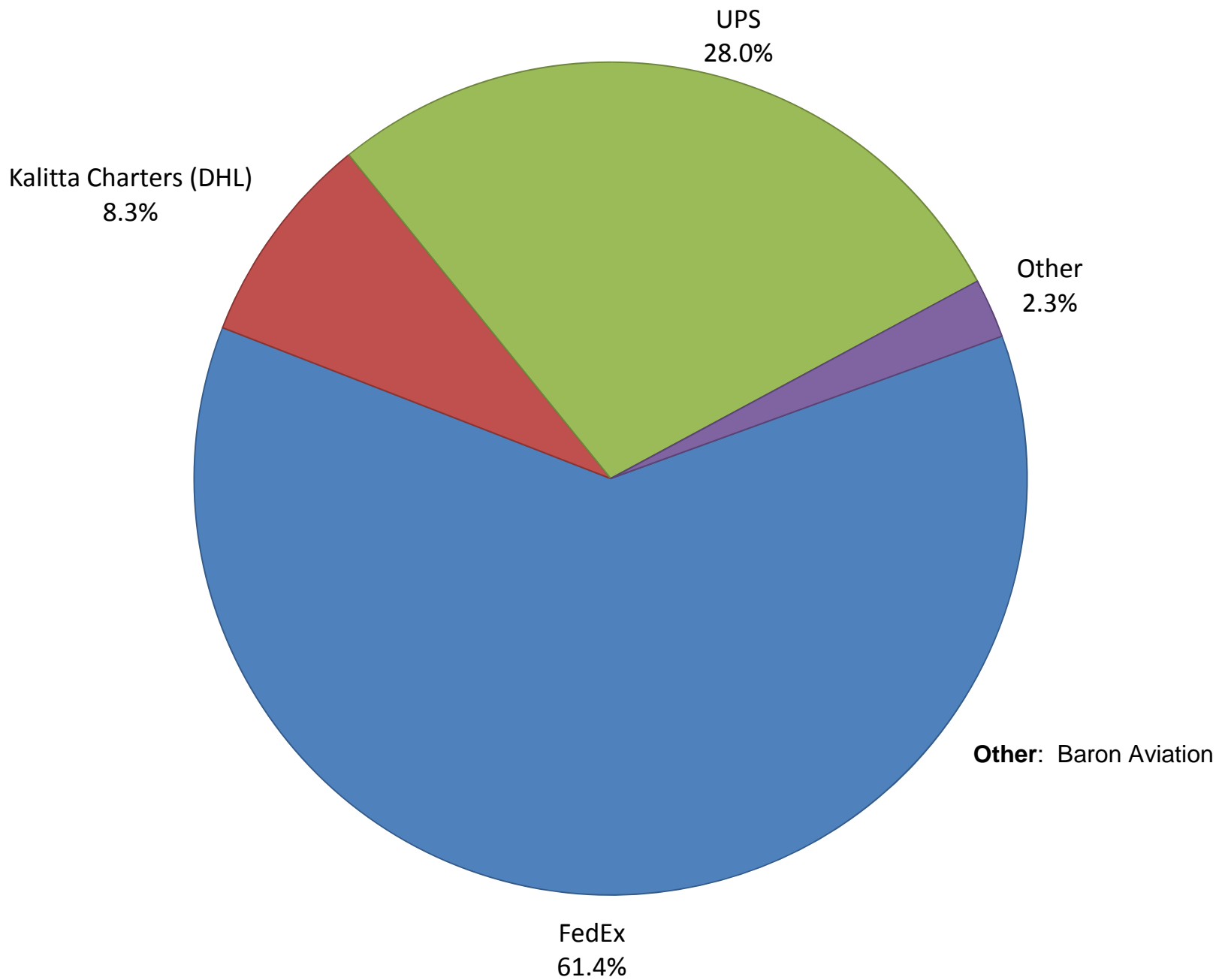
**Note:** American/US Airways, Delta and United Airlines percentages include Affiliates.

**AUS Belly Freight Market Shares  
December 2016**

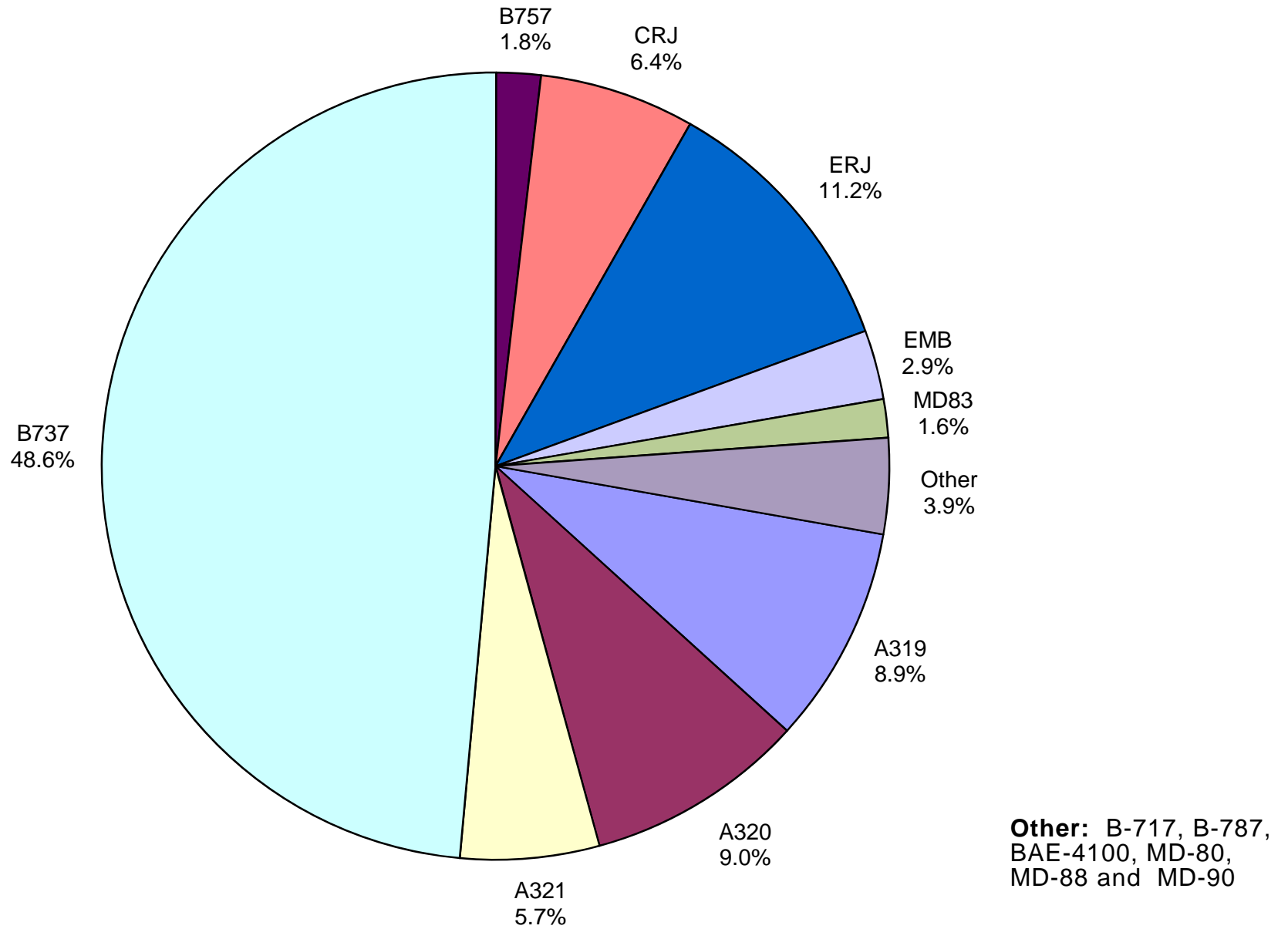


**Other = Alaska Airlines**

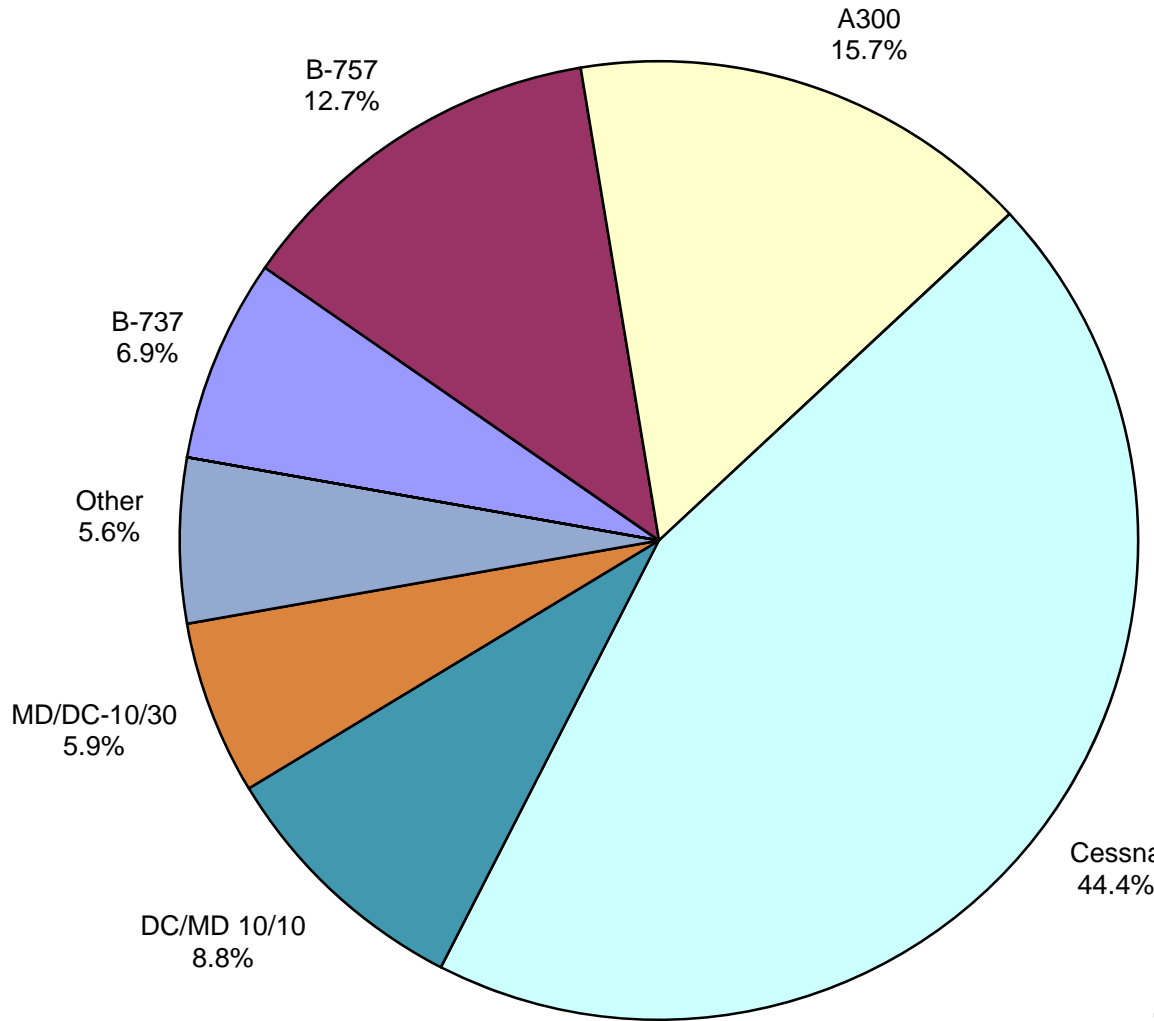
# Air Cargo Market Share December 2016



**AUS Scheduled Passenger Aircraft Fleet Mix  
December 2016**



**AUS Scheduled Cargo Aircraft Fleet Mix  
December 2016**



**Other:** A-310, B-727, B-747,  
B-767 and MD-11

# Austin-Bergstrom International Airport

## PAX Detail Report - December, 2016

| Period<br>Company                                    | 12/2016          | 12/2015          | YTD          |             | YTD<br>2016       | YTD<br>2015       | 2016           |             | 2015<br>Share | Share<br>Share | Diff |
|--|------------------|------------------|--------------|-------------|-------------------|-------------------|----------------|-------------|---------------|----------------|------|
|  |                  |                  | Difference   | Change      |                   |                   | Difference     | Change      |               |                |      |
| AeroMexico Airlines/Aerovias de Mexico, S.A. de C.V. | 3,077            | 0                | 3,077        | 0.0         | 4,423             | 98                | 4,325          | 4,413.3     | 0.0           | 0.0            | 0.0  |
| Air Canada   | 3,457            | 2,596            | 861          | 33.2        | 42,333            | 24,087            | 18,246         | 75.8        | 0.3           | 0.2            | 0.1  |
| Alaska Airlines, Inc.                                | 18,448           | 14,727           | 3,721        | 25.3        | 225,128           | 148,783           | 76,345         | 51.3        | 1.8           | 1.3            | 0.6  |
| Allegiant Air, LLC                                   | 16,808           | 10,064           | 6,744        | 67.0        | 173,830           | 120,550           | 53,280         | 44.2        | 1.4           | 1.0            | 0.4  |
| American Airlines, Inc.                              | 203,247          | 213,742          | -10,495      | -4.9        | 2,531,289         | 2,143,084         | 388,205        | 18.1        | 20.4          | 18.0           | 2.3  |
| Ameristarjet Charter Inc.                            | 0                | 0                | 0            | 0.0         | 14                | 30                | -16            | -53.3       | 0.0           | 0.0            | 0.0  |
| Atlas Air, Inc                                       | 0                | 0                | 0            | 0.0         | 453               | 558               | -105           | -18.8       | 0.0           | 0.0            | 0.0  |
| Branson AirExpress, LLC                              | 0                | 0                | 0            | 0.0         | 0                 | 2,107             | -2,107         | -100.0      | 0.0           | 0.0            | 0.0  |
| British Airways Plc                                  | 10,030           | 9,282            | 748          | 8.1         | 129,941           | 122,949           | 6,992          | 5.7         | 1.0           | 1.0            | 0.0  |
| Condor Airlines (Flugdienst) GmbH                    | 0                | 0                | 0            | 0.0         | 8,142             | 0                 | 8,142          | 0.0         | 0.1           | 0.0            | 0.1  |
| Delta Air Lines                                      | 123,634          | 116,528          | 7,106        | 6.1         | 1,530,740         | 1,428,662         | 102,078        | 7.1         | 12.3          | 12.0           | 0.3  |
| Eastern Air Lines Group, Inc.                        | 0                | 0                | 0            | 0.0         | 163               | 0                 | 163            | 0.0         | 0.0           | 0.0            | 0.0  |
| Frontier Airlines, Inc.                              | 23,146           | 24,330           | -1,184       | -4.9        | 315,501           | 351,664           | -36,163        | -10.3       | 2.5           | 3.0            | -0.4 |
| Iberia Airlines                                      | 0                | 0                | 0            | 0.0         | 246               | 0                 | 246            | 0.0         | 0.0           | 0.0            | 0.0  |
| JetBlue Airways Corporation                          | 44,346           | 43,019           | 1,327        | 3.1         | 562,667           | 541,107           | 21,560         | 4.0         | 4.5           | 4.5            | 0.0  |
| Kalitta Charters, LLC                                | 0                | 0                | 0            | 0.0         | 0                 | 1                 | -1             | -100.0      | 0.0           | 0.0            | 0.0  |
| Miami Air International Inc.                         | 0                | 0                | 0            | 0.0         | 751               | 1,348             | -597           | -44.3       | 0.0           | 0.0            | 0.0  |
| Omni Air International                               | 0                | 0                | 0            | 0.0         | 0                 | 238               | -238           | -100.0      | 0.0           | 0.0            | 0.0  |
| Public Charters, Inc., d/b/a Texas Sky               | 549              | 255              | 294          | 115.3       | 2,379             | 2,732             | -353           | -12.9       | 0.0           | 0.0            | 0.0  |
| Republic Airlines, Inc.                              | 0                | 0                | 0            | 0.0         | 0                 | 1,058             | -1,058         | -100.0      | 0.0           | 0.0            | 0.0  |
| Southwest Airlines                                   | 416,305          | 419,788          | -3,483       | -0.8        | 4,777,967         | 4,371,303         | 406,664        | 9.3         | 38.4          | 36.7           | 1.7  |
| Sun Country Airlines/ MN Airlines, LLC               | 180              | 218              | -38          | -17.4       | 5,062             | 2,623             | 2,439          | 93.0        | 0.0           | 0.0            | 0.0  |
| Titan Airways Ltd.                                   | 0                | 0                | 0            | 0.0         | 0                 | 160               | -160           | -100.0      | 0.0           | 0.0            | 0.0  |
| Transportes Aeromar S.A. de C.V.                     | 0                | 0                | 0            | 0.0         | 0                 | 170               | -170           | -100.0      | 0.0           | 0.0            | 0.0  |
| Turkish Airlines                                     | 0                | 0                | 0            | 0.0         | 376               | 0                 | 376            | 0.0         | 0.0           | 0.0            | 0.0  |
| United Airlines, Inc.                                | 154,053          | 162,508          | -8,455       | -5.2        | 1,941,357         | 1,969,167         | -27,810        | -1.4        | 15.6          | 16.6           | -0.9 |
| US Airways Group, Inc.                               | 0                | 0                | 0            | 0.0         | 0                 | 428,636           | -428,636       | -100.0      | 0.0           | 3.6            | -3.6 |
| Virgin America Inc.                                  | 13,855           | 12,746           | 1,109        | 8.7         | 171,361           | 236,844           | -65,483        | -27.6       | 1.4           | 2.0            | -0.6 |
| VivaAerobus  | 42               | 0                | 42           | 0.0         | 42                | 0                 | 42             | 0.0         | 0.0           | 0.0            | 0.0  |
| Volaris  | 2,612            | 0                | 2,612        | 0.0         | 10,303            | 0                 | 10,303         | 0.0         | 0.1           | 0.0            | 0.1  |
| Xtra Airways/Casino Express                          | 278              | 0                | 278          | 0.0         | 2,381             | 0                 | 2,381          | 0.0         | 0.0           | 0.0            | 0.0  |
| <b>Report Totals</b>                                 | <b>1,034,067</b> | <b>1,029,803</b> | <b>4,264</b> | <b>0.4%</b> | <b>12,436,849</b> | <b>11,897,959</b> | <b>538,890</b> | <b>4.5%</b> |               |                |      |

### Statistics Included in Report:

|                                       |  |
|---------------------------------------|--|
| Domestic Passengers:                  | Enplaned Revenue, Deplaned Revenue, Enplaned Non-Revenue, Deplaned Non-Revenue |
| International Passengers:             | Enplaned Revenue, Deplaned Revenue, Enplaned Non-Revenue, Deplaned Non-Revenue |
| International Pre-Cleared Passengers: | Enplaned Revenue, Deplaned Revenue, Enplaned Non-Revenue, Deplaned Non-Revenue |

# Austin-Bergstrom International Airport

## Summary Landing Report

### Landing Type: Total

| Month                             | 2016   |               | 2015   |               | 2014   |               | % Change 2016 - 2015 |        | % Change 2015 - 2014 |        |
|-----------------------------------|--------|---------------|--------|---------------|--------|---------------|----------------------|--------|----------------------|--------|
|                                   | Count  | Weight        | Count  | Weight        | Count  | Weight        | Count                | Weight | Count                | Weight |
| January                           | 4,622  | 560,718,408   | 4,480  | 530,688,382   | 4,213  | 478,945,673   | 3.17%                | 5.66%  | 6.34%                | 10.80% |
| February                          | 4,387  | 527,452,920   | 3,992  | 477,489,019   | 3,839  | 437,160,505   | 9.89%                | 10.46% | 3.99%                | 9.23%  |
| March                             | 5,151  | 639,655,137   | 4,872  | 584,604,521   | 4,746  | 552,992,572   | 5.73%                | 9.42%  | 2.65%                | 5.72%  |
| April                             | 4,892  | 614,643,711   | 4,875  | 593,462,176   | 4,515  | 521,133,372   | 0.35%                | 3.57%  | 7.97%                | 13.88% |
| May                               | 5,096  | 630,853,941   | 5,161  | 625,876,151   | 4,749  | 553,415,664   | -1.26%               | 0.80%  | 8.68%                | 13.09% |
| June                              | 5,179  | 651,537,449   | 5,239  | 644,690,908   | 4,821  | 569,196,868   | -1.15%               | 1.06%  | 8.67%                | 13.26% |
| July                              | 5,233  | 663,015,597   | 5,503  | 676,131,170   | 5,000  | 590,375,055   | -4.91%               | -1.94% | 10.06%               | 14.53% |
| August                            | 5,181  | 660,099,361   | 5,277  | 652,770,571   | 4,752  | 562,685,827   | -1.82%               | 1.12%  | 11.05%               | 16.01% |
| September                         | 4,738  | 623,397,035   | 4,833  | 598,547,454   | 4,513  | 546,749,431   | -1.97%               | 4.15%  | 7.09%                | 9.47%  |
| October                           | 4,923  | 649,182,343   | 4,891  | 611,952,269   | 4,842  | 589,981,037   | 0.65%                | 6.08%  | 1.01%                | 3.72%  |
| November                          | 4,775  | 624,303,554   | 4,815  | 605,234,834   | 4,532  | 546,643,220   | -0.83%               | 3.15%  | 6.24%                | 10.72% |
| December                          | 4,893  | 629,611,090   | 5,100  | 633,215,540   | 4,826  | 569,752,623   | -4.06%               | -0.57% | 5.68%                | 11.14% |
| <b>Totals for Selected Period</b> | 59,070 | 7,474,470,546 | 59,038 | 7,234,662,995 | 55,348 | 6,519,031,847 | 0.05%                | 3.31%  | 6.67%                | 10.98% |
| <b>Yearly Totals</b>              | 59,070 | 7,474,470,546 | 59,038 | 7,234,662,995 | 55,348 | 6,519,031,847 |                      |        | 6.67%                | 10.98% |