

**Austin-Bergstrom International Airport
Aviation Activity Report
Calendar Year 2017 vs 2016**

Combined Terminals

	9/2017	9/2016	Percent Change	01/2017 - 09/2017	01/2016 - 09/2016	Percent Change
ABIA						
Total Passenger Activity						
Domestic Enplaned Revenue	517,266	485,437	6.56	4,794,893	4,410,162	8.72
Domestic Deplaned Revenue	523,015	494,179	5.84	4,772,423	4,412,062	8.17
International Enplaned Revenue	8,722	6,405	36.17	111,451	84,772	31.47
International Deplaned Revenue	8,680	8,064	7.64	112,276	90,699	23.79
Domestic Enplaned Non-Revenue	12,327	10,371	18.86	121,962	100,092	21.85
Domestic Deplaned Non-Revenue	11,894	9,980	19.18	116,184	100,722	15.35
International Enplaned Non-Revenue	54	66	-18.18	887	736	20.52
International Deplaned Non-Revenue	62	59	5.08	757	739	2.44
Intl Enplaned Pre-Cleared Revenue	1,713	1,688	1.48	14,887	14,355	3.71
Intl Deplaned Pre-Cleared Revenue	1,812	2,014	-10.03	15,643	16,092	-2.79
Intl Enplaned Pre-Cleared Non-Revenue	13	14	-7.14	201	238	-15.55
Intl Deplaned Pre-Cleared Non-Revenue	23	15	53.33	214	262	-18.32
South Terminal Domestic Enplaned Revenue	6,861	0	0.00	69,143	0	0.00
South Terminal Domestic Deplaned Revenue	7,038	0	0.00	68,877	0	0.00
South Terminal Domestic Enplaned Non-Revenue	1	0	0.00	37	0	0.00
South Terminal Domestic Deplaned Non-Revenue	0	0	0.00	13	0	0.00
ABIA Passenger Totals	1,099,481	1,018,292	7.97	10,199,848	9,230,931	10.50
<i>ABIA Enplaned Passenger Totals</i>	<i>546,957</i>	<i>503,981</i>	<i>8.53</i>	<i>5,113,461</i>	<i>4,610,355</i>	<i>10.91</i>
<i>ABIA Deplaned Passenger Totals</i>	<i>552,524</i>	<i>514,311</i>	<i>7.43</i>	<i>5,086,387</i>	<i>4,620,576</i>	<i>10.08</i>
<i>ABIA Domestic Passenger Totals</i>	<i>1,078,402</i>	<i>999,967</i>	<i>7.84</i>	<i>9,943,532</i>	<i>9,023,038</i>	<i>10.20</i>
<i>ABIA International Passenger Totals</i>	<i>21,079</i>	<i>18,325</i>	<i>15.03</i>	<i>256,316</i>	<i>207,893</i>	<i>23.29</i>

CURRENT PASSENGER RECORD = 1,310,174 RECORD SET = JULY 2017

Total Aircraft Operations

Air Carrier	9,870	8,904	10.85	91,765	84,950	8.02
Commuter & Air Taxi	1,243	1,550	-19.81	11,014	12,155	-9.39
Military	968	980	-1.22	7,575	8,099	-6.47
General Aviation						
Itinerant	4,198	4,470	-6.09	36,920	36,153	2.12
Local	112	204	-45.10	1,979	1,966	0.66
Total G.A.	4,310	4,674	-7.79	38,899	38,119	2.05
Total Operations	16,391	16,108	1.76	149,253	143,323	4.14

**Austin-Bergstrom International Airport
Aviation Activity Report
Calendar Year 2017 vs 2016**

By Terminal

	9/2017	9/2016	Percent Change	01/2017 - 09/2017	01/2016 - 09/2016	Percent Change
<u>Barbara Jordan Terminal (BJT)</u>						
Passenger Activity						
Domestic Enplaned Revenue	517,266	485,437	6.56	4,794,893	4,410,162	8.72
Domestic Deplaned Revenue	523,015	494,179	5.84	4,772,423	4,412,062	8.17
International Enplaned Revenue	8,722	6,405	36.17	111,451	84,772	31.47
International Deplaned Revenue	8,680	8,064	7.64	112,276	90,699	23.79
Domestic Enplaned Non-Revenue	12,327	10,371	18.86	121,962	100,092	21.85
Domestic Deplaned Non-Revenue	11,894	9,980	19.18	116,184	100,722	15.35
International Enplaned Non-Revenue	54	66	-18.18	887	736	20.52
International Deplaned Non-Revenue	62	59	5.08	757	739	2.44
Intl Enplaned Pre-Cleared Revenue	1,713	1,688	1.48	14,887	14,355	3.71
Intl Deplaned Pre-Cleared Revenue	1,812	2,014	-10.03	15,643	16,092	-2.79
Intl Enplaned Pre-Cleared Non-Revenue	13	14	-7.14	201	238	-15.55
Intl Deplaned Pre-Cleared Non-Revenue	23	15	53.33	214	262	-18.32
Barbara Jordan Terminal Passenger Totals	1,085,581	1,018,292	6.61	10,061,778	9,230,931	9.00
<i>BJT Enplaned Passenger Totals</i>	<i>540,095</i>	<i>503,981</i>	<i>7.17</i>	<i>5,044,281</i>	<i>4,610,355</i>	<i>9.41</i>
<i>BJT Deplaned Passenger Totals</i>	<i>545,486</i>	<i>514,311</i>	<i>6.06</i>	<i>5,017,497</i>	<i>4,620,576</i>	<i>8.59</i>
<i>BJT Domestic Passenger Totals</i>	<i>1,064,502</i>	<i>999,967</i>	<i>6.45</i>	<i>9,805,462</i>	<i>9,023,038</i>	<i>8.67</i>
<i>BJT International Passenger Totals</i>	<i>21,079</i>	<i>18,325</i>	<i>15.03</i>	<i>256,316</i>	<i>207,893</i>	<i>23.29</i>
<u>South Terminal (ST)</u>						
Passenger Activity						
South Terminal Domestic Enplaned Revenue	6,861	0	0	69,143	0	0
South Terminal Domestic Deplaned Revenue	7,038	0	0	68,877	0	0
South Terminal Domestic Enplaned Non-Revenue	1	0	0	37	0	0
South Terminal Domestic Deplaned Non-Revenue	0	0	0	13	0	0
South Terminal Passenger Totals	13,900	0	0.00	138,070	0	0.00
<i>ST Enplaned Passenger Totals</i>	<i>6,862</i>	<i>0</i>	<i>0</i>	<i>69,180</i>	<i>0</i>	<i>0</i>
<i>ST Deplaned Passenger Totals</i>	<i>7,038</i>	<i>0</i>	<i>0</i>	<i>68,890</i>	<i>0</i>	<i>0</i>

**Austin-Bergstrom International Airport
Aviation Activity Report
Calendar Year 2017 vs 2016**

	9/2017	9/2016	Percent Change	01/2017 - 09/2017	01/2016 - 09/2016	Percent Change
<u>Total Cargo Activity</u>						
Mail						
Domestic Enplaned Mail	183,558	152,644	20.25	1,739,002	1,171,438	48.45
Domestic Deplaned Mail	387,830	283,359	36.87	3,320,216	2,061,721	61.04
International Enplaned Mail	0	0	0.00	0	0	0.00
International Deplaned Mail	0	0	0.00	2	2	0.00
South Terminal-Intl Enplaned Mail	0	0	0.00	0	0	0.00
South Terminal-Intl Deplaned Mail	0	0	0.00	0	0	0.00
Mail Totals	571,388	436,003	31.05	5,059,220	3,233,161	56.48
Cargo						
Domestic Enplaned Cargo	6,314,785	6,233,823	1.30	46,799,576	46,334,423	1.00
Domestic Deplaned Cargo	7,206,354	6,743,432	6.86	63,260,529	57,821,566	9.41
International Enplaned Cargo	519,111	304,656	70.39	5,904,906	3,364,640	75.50
International Deplaned Cargo	900,853	1,072,591	-16.01	3,628,959	3,355,847	8.14
South Terminal-Intl Enplaned Cargo	0	0	0.00	0	0	0.00
South Terminal-Intl Deplaned Cargo	0	0	0.00	0	0	0.00
Cargo Totals	14,941,103	14,354,502	4.09	119,593,970	110,876,476	7.86
Belly Freight						
Domestic Enplaned Belly Freight	290,805	232,816	24.91	2,496,653	2,138,684	16.74
Domestic Deplaned Belly Freight	496,065	447,695	10.80	4,582,764	4,183,888	9.53
International Enplaned Belly Freight	230,364	106,311	116.69	2,061,702	1,336,066	54.31
International Deplaned Belly Freight	729,001	574,226	26.95	6,415,879	4,450,161	44.17
South Terminal-Intl Enplaned Belly Freight	0	0	0.00	0	0	0.00
South Terminal-Intl Deplaned Belly Freight	0	0	0.00	0	0	0.00
Belly Freight Totals	1,746,235	1,361,048	28.30	15,556,998	12,108,799	28.48
Cargo Totals (Mail, Cargo, Belly Freight)	17,258,726	16,151,553	6.85	140,210,188	126,218,436	11.09
<i>Enplaned Cargo Totals</i>	<i>7,538,623</i>	<i>7,030,250</i>	<i>7.23</i>	<i>59,001,839</i>	<i>54,345,251</i>	<i>8.57</i>
<i>Deplaned Cargo Totals</i>	<i>9,720,103</i>	<i>9,121,303</i>	<i>6.56</i>	<i>81,208,349</i>	<i>71,873,185</i>	<i>12.99</i>
<i>Domestic Cargo Totals</i>	<i>14,879,397</i>	<i>14,093,769</i>	<i>5.57</i>	<i>122,198,740</i>	<i>113,711,720</i>	<i>7.46</i>
<i>International Cargo Totals</i>	<i>2,379,329</i>	<i>2,057,784</i>	<i>15.63</i>	<i>18,011,448</i>	<i>12,506,716</i>	<i>44.01</i>

CURRENT CARGO RECORD = 40,215,518

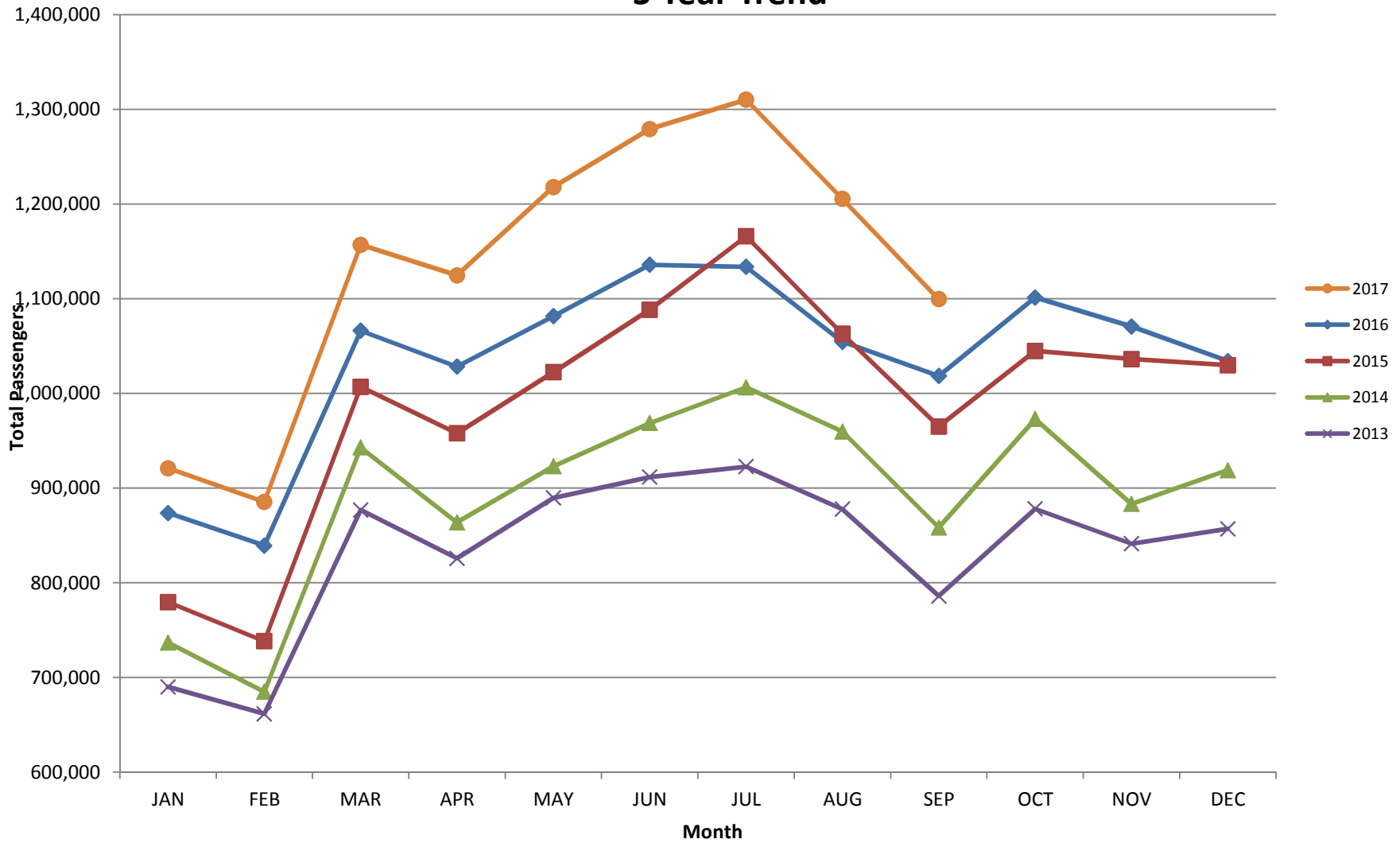
RECORD SET = MARCH 2001

AUS – Airline Codes
September 2017

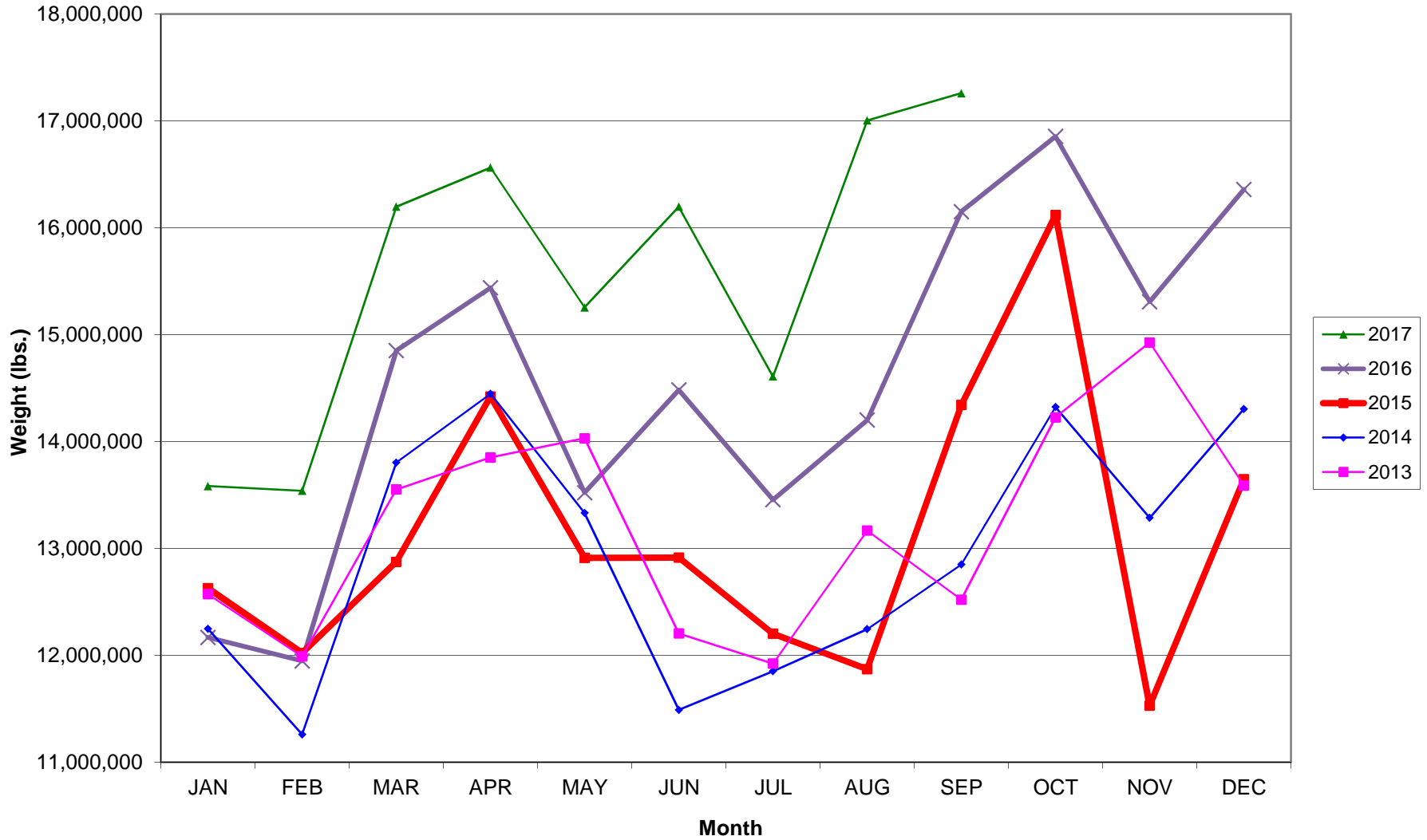
<u>Code</u>	<u>Carrier</u>
AM	AeroMexico Airlines
AC	Air Canada
AS	Alaska Airlines, Inc.
G4	Allegiant Air, LLC
AA	American Airlines, Inc.
BA	British Airways Plc
DE	Condor Airlines
DL	Delta Airlines
F9	Frontier Airlines
B6	JetBlue Airways Corp.
WN	Southwest Airlines
SY	Sun Country Airlines/ MN Airlines, LLC
WQ	Swift Air
UA	United Airlines, Inc.
VC	VIA Airlines
VX	Virgin America Inc.
Y4	Volaris/Concesionaria Vuela Compañía de Aviación, S.A.P.I. de C.V.

AUSTIN PASSENGER TRAFFIC

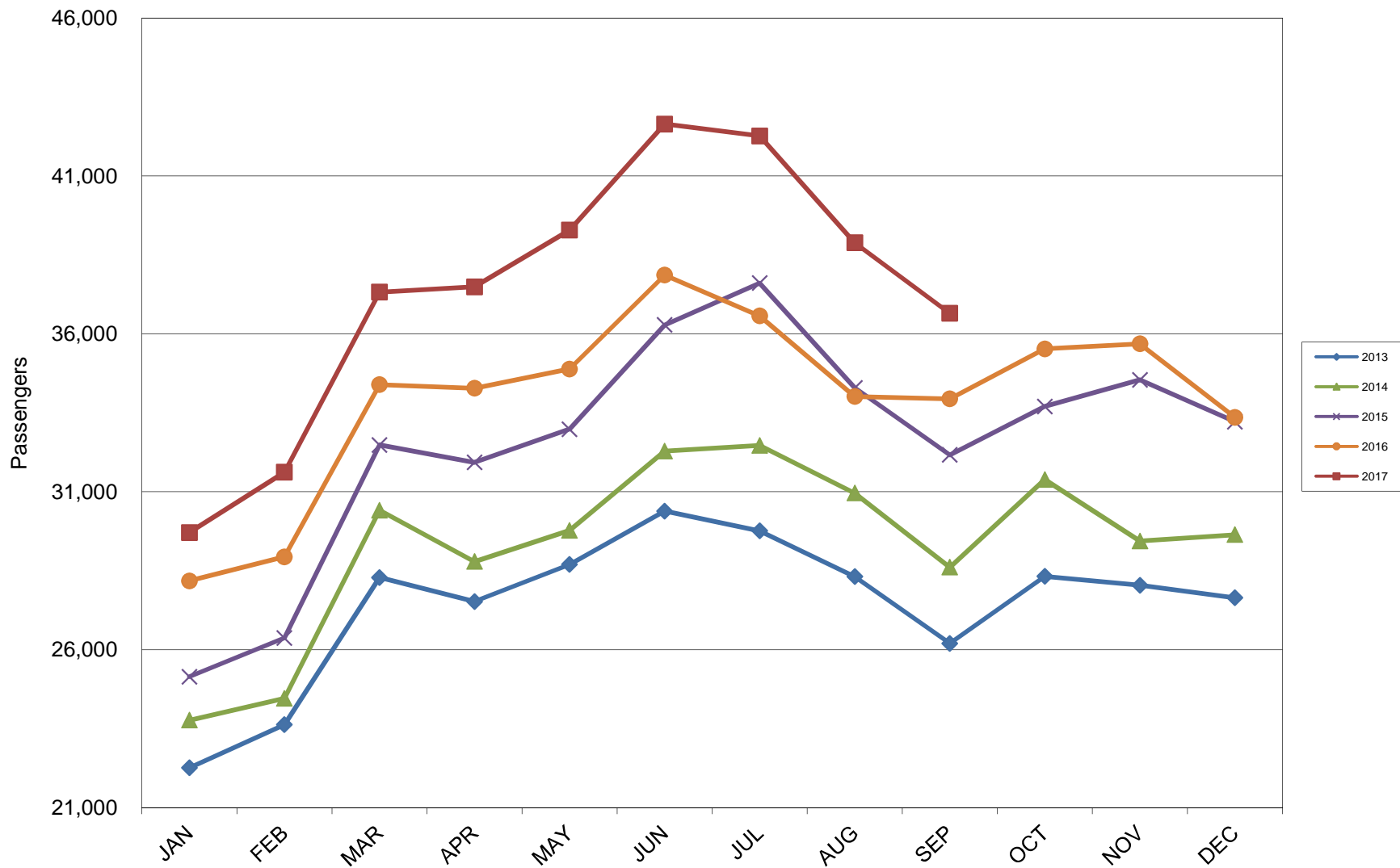
5 Year Trend



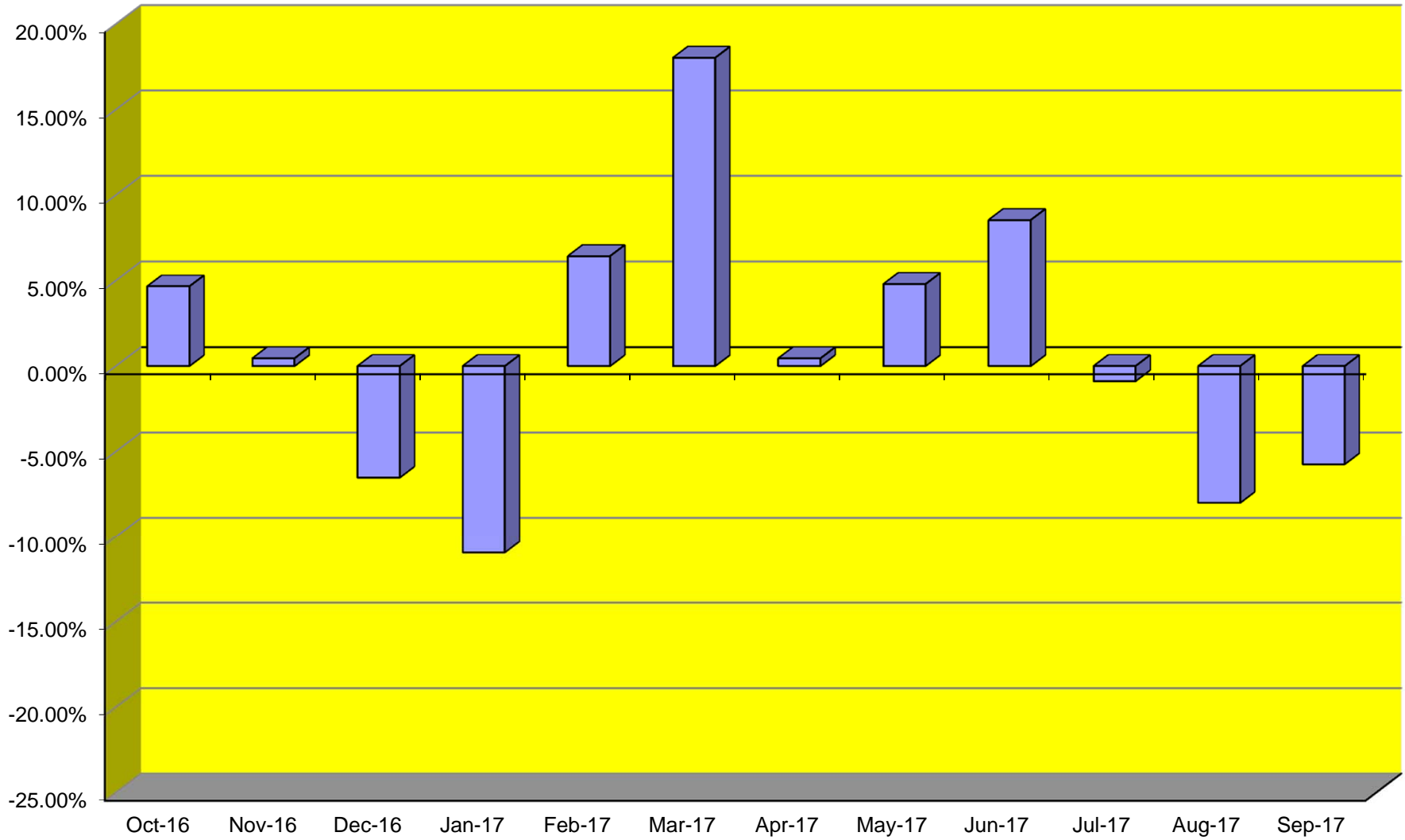
TOTAL CARGO POUNDAGE - AUSTIN, TEXAS



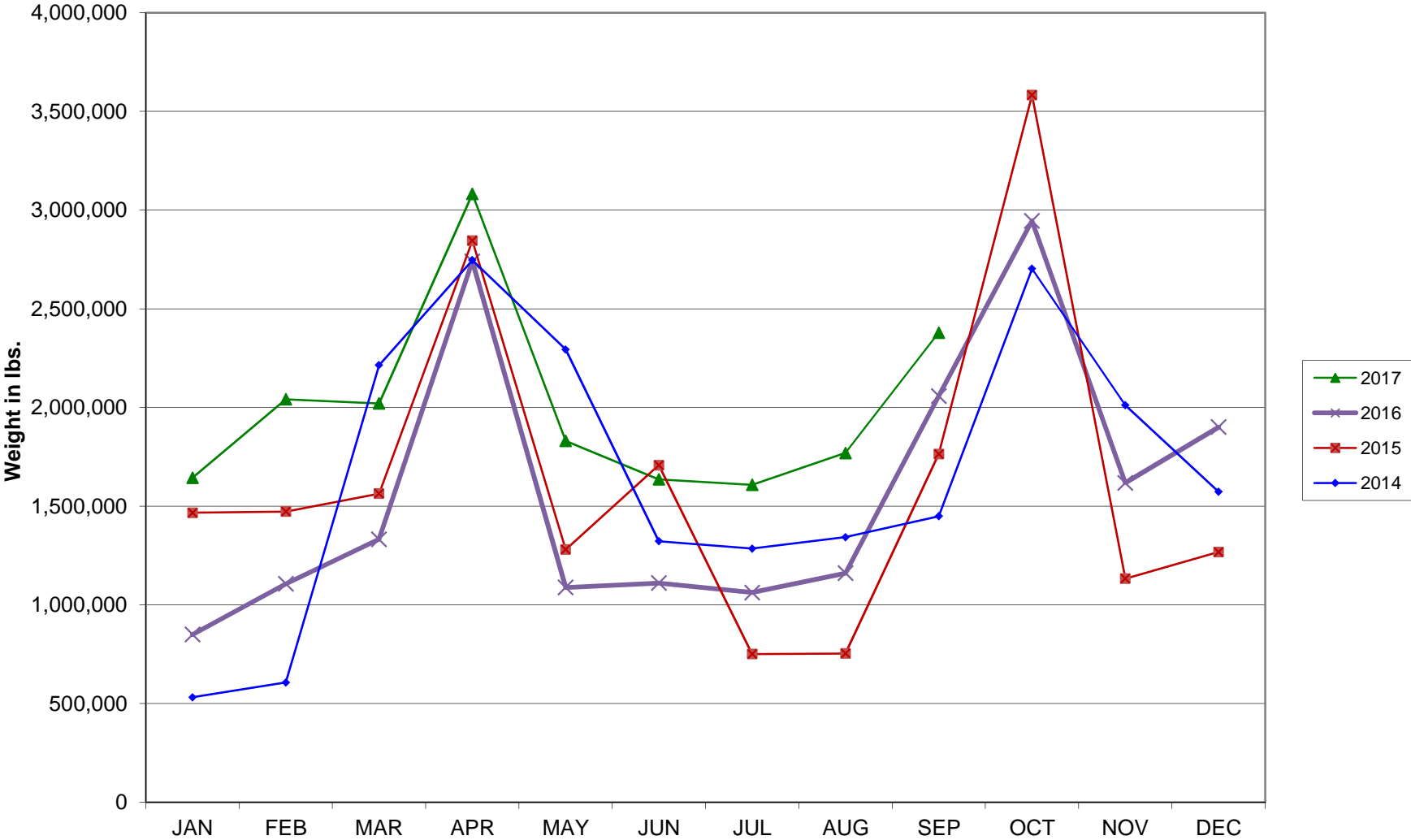
Average Daily Passengers



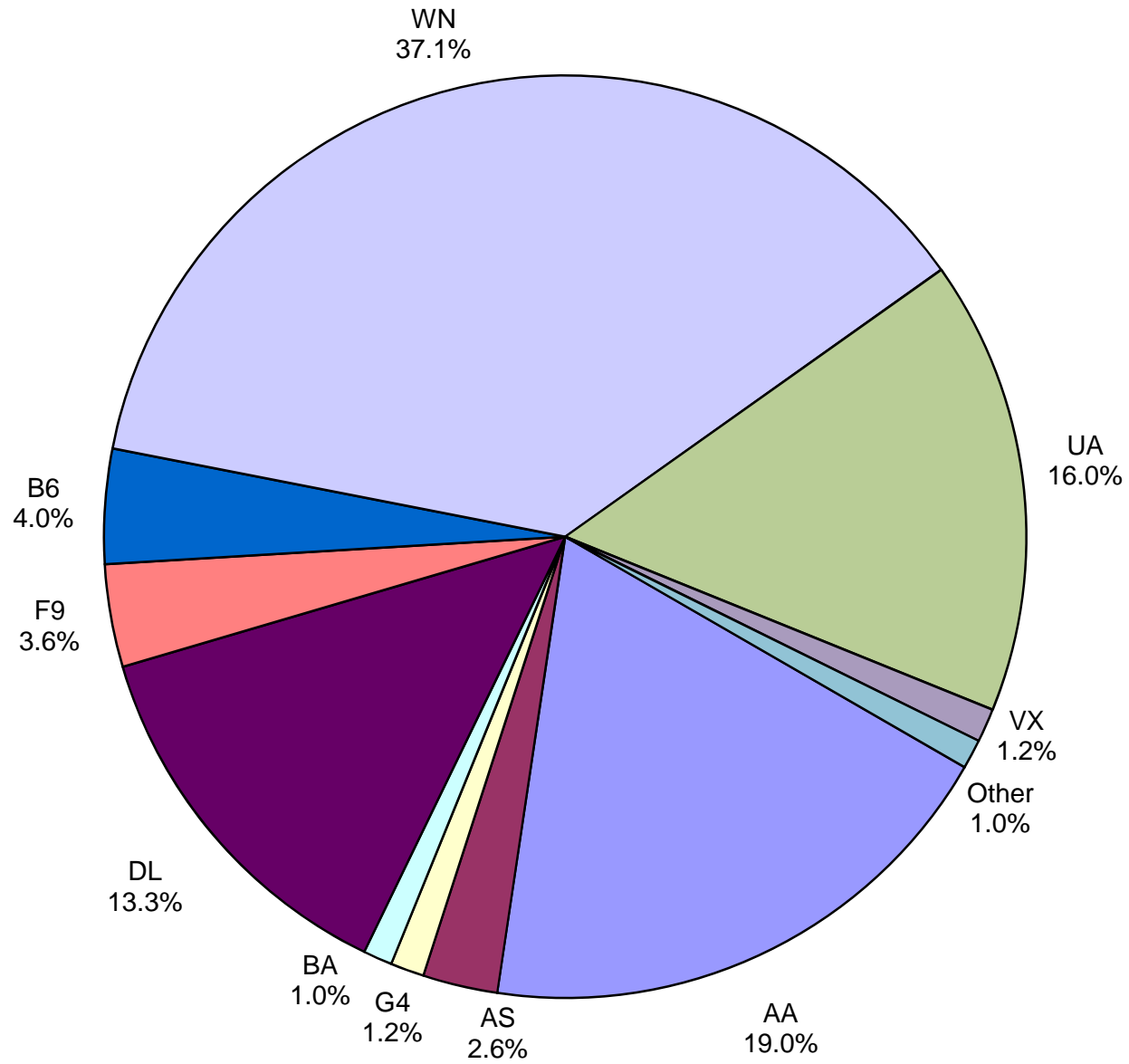
Monthly % Change in Average Daily Passengers



HISTORY OF INTERNATIONAL AIR CARGO



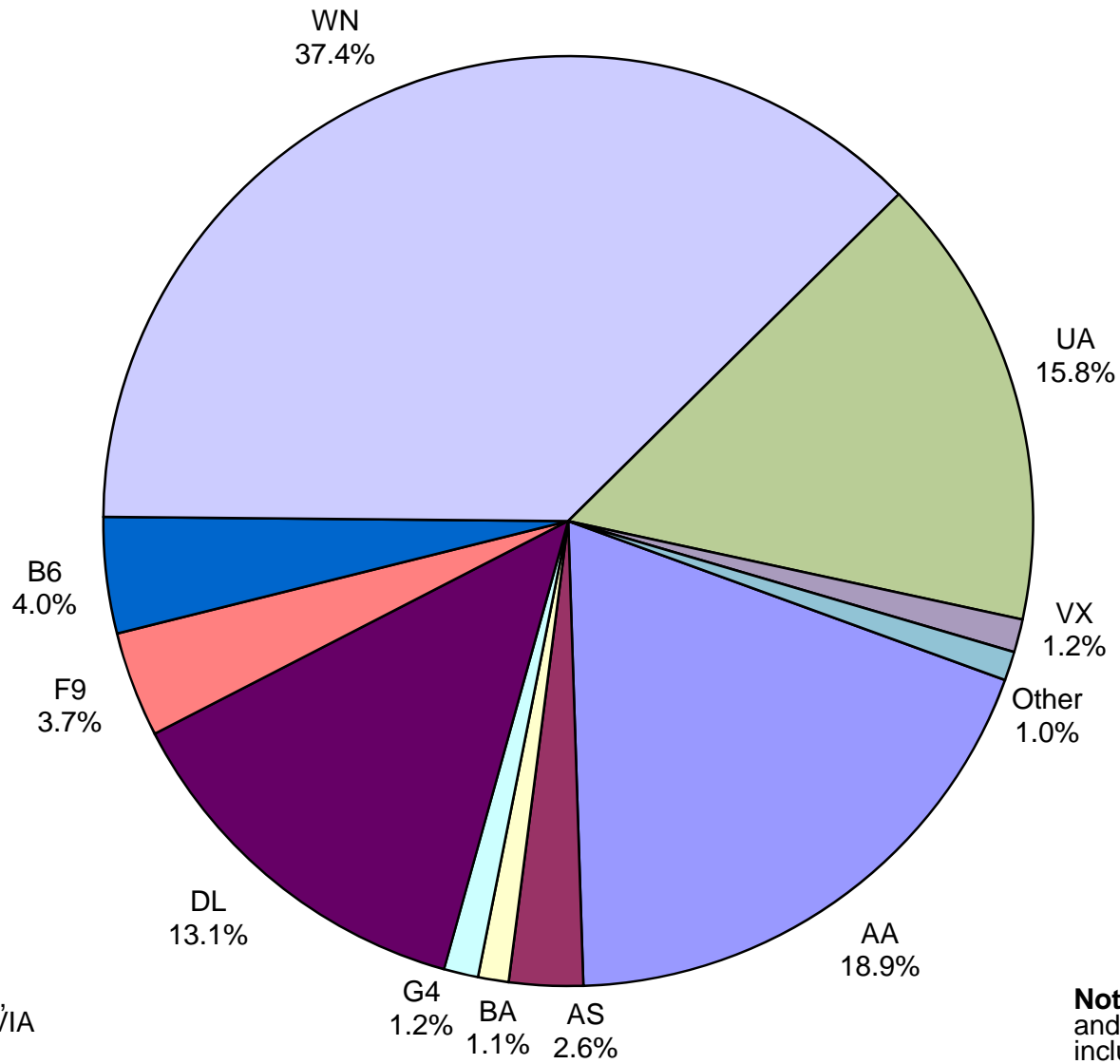
**Total Passengers
September 2017**



Other: Aeromexico, Air Canada LLC, Condor Airlines, Sun Country, Swift Air, VIA Airlines and Volaris/Concesionaria Vuela

Note: American, Delta and United Airlines percentages include Affiliates.

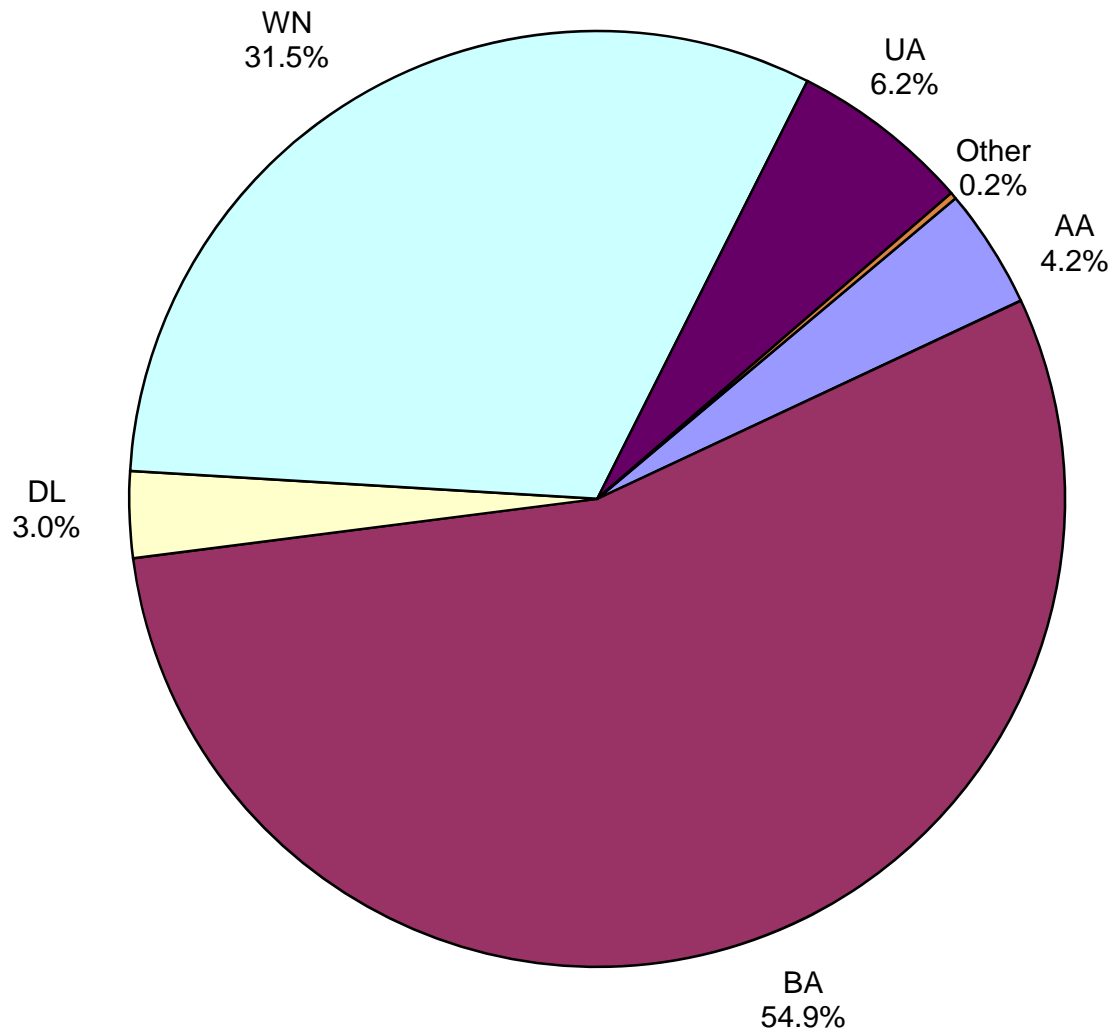
**All Passenger Carriers
Enplaned Revenue Passengers
September 2017**



Other: Aeromexico, Air Canada, Condor Airlines, Sun Country, VIA Airlines and Volaris

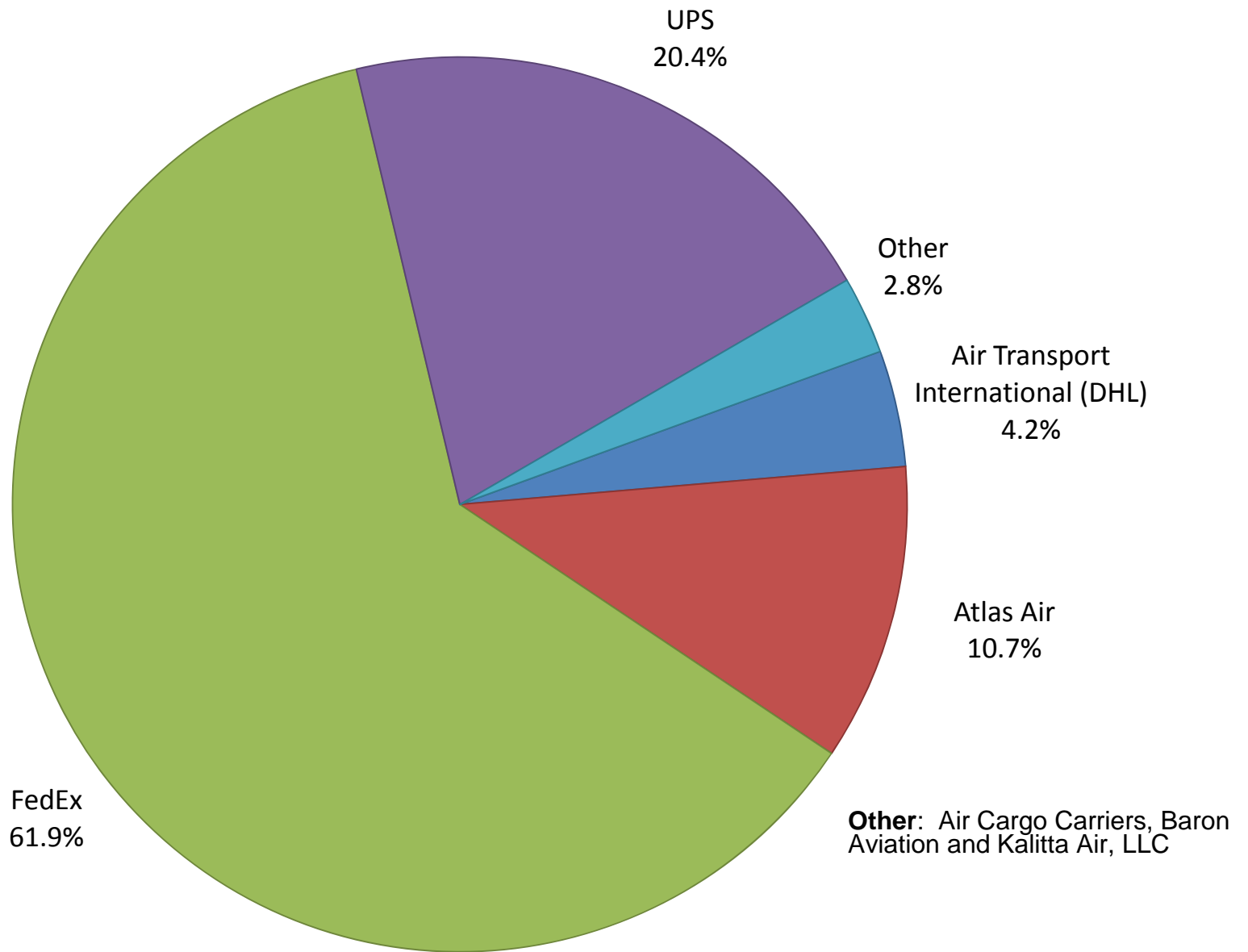
Note: American/US Airways, Delta and United Airlines percentages include Affiliates.

**AUS Belly Freight Market Shares
September 2017**

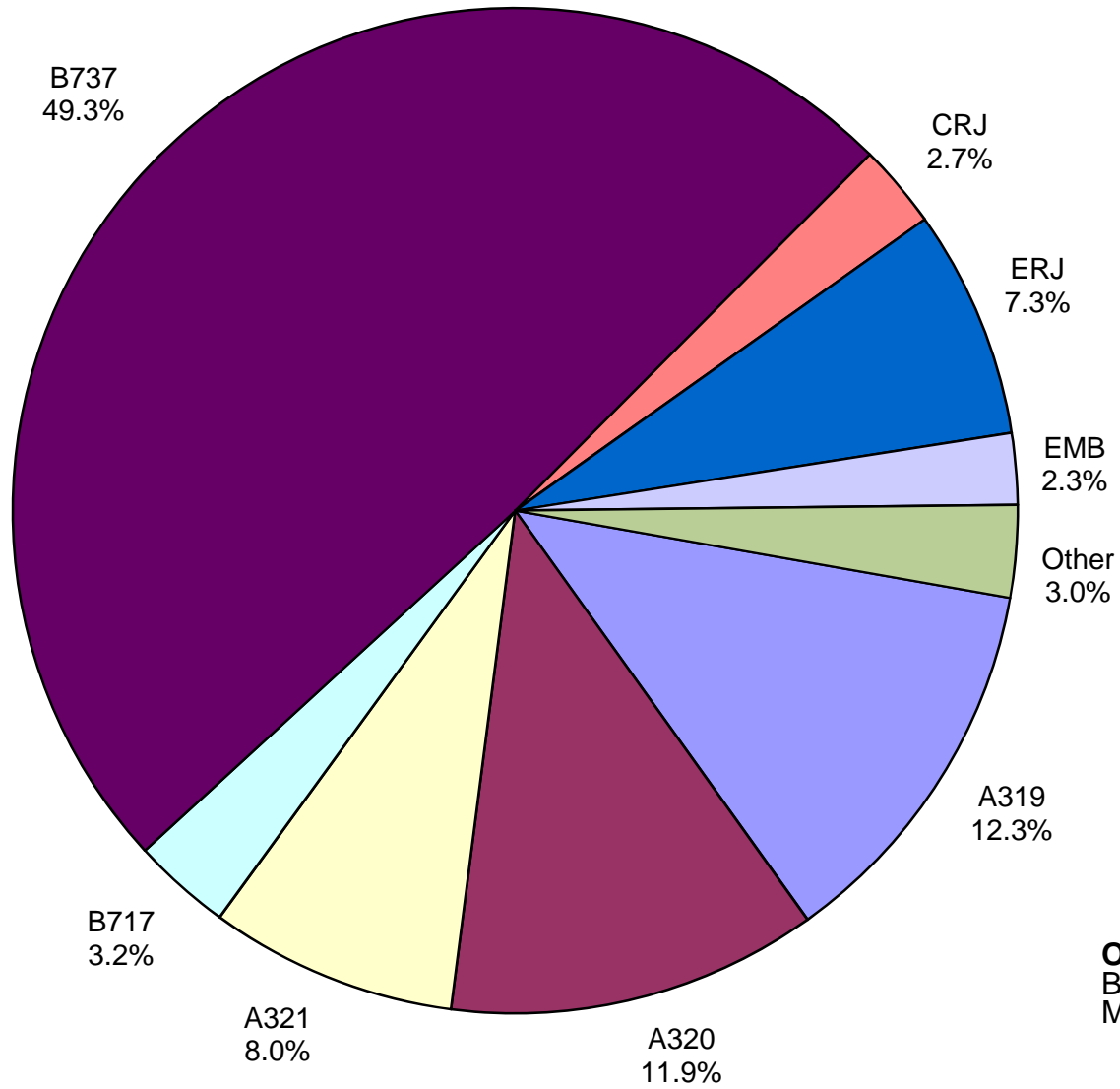


Other = Alaska Airlines

Air Cargo Market Share September 2017

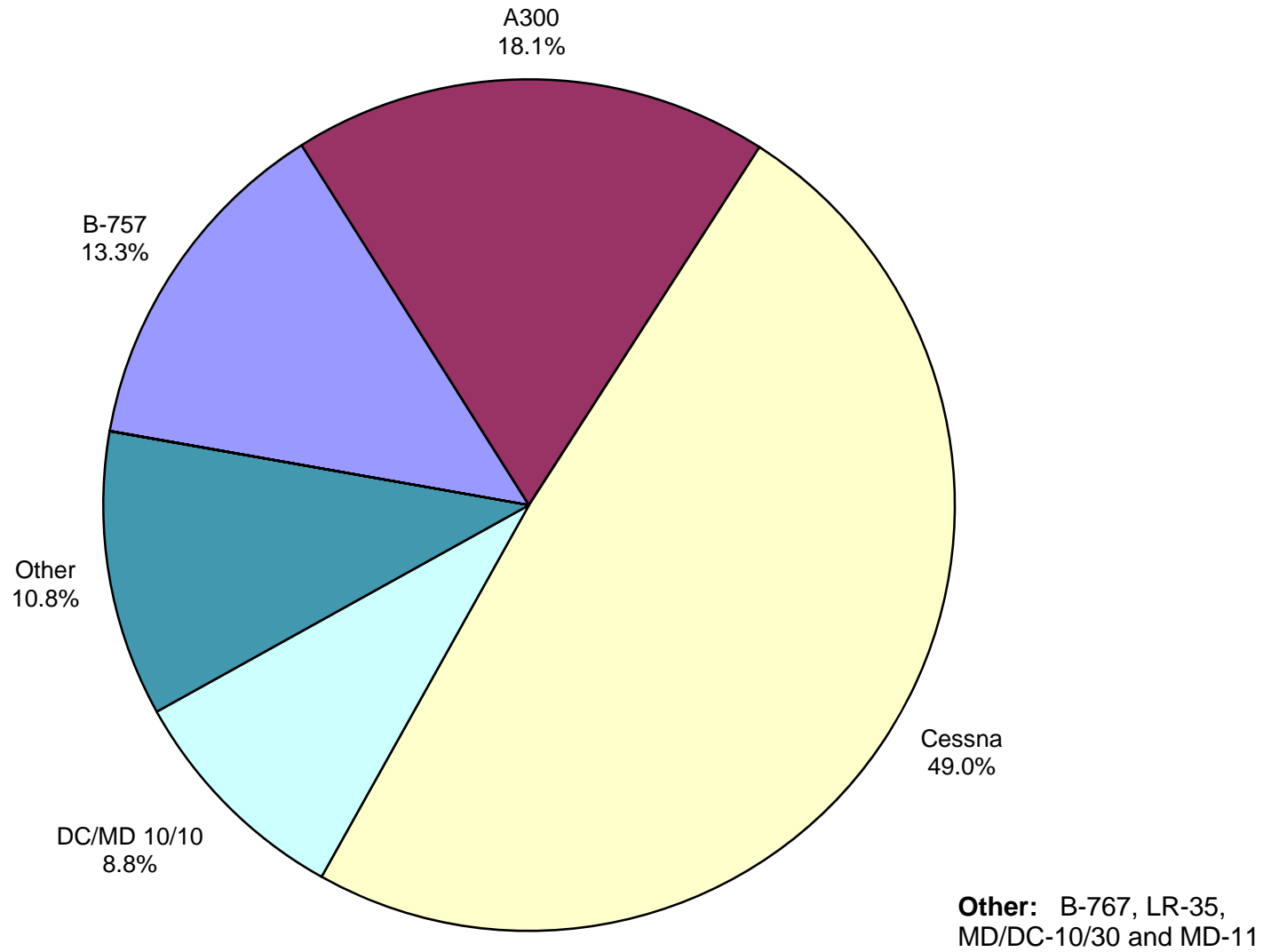


**AUS Scheduled Passenger Aircraft Fleet Mix
September 2017**



Other: B-757, B-767,
B-787-900, MD-82, MD-83,
MD-88, MD-90

AUS Scheduled Cargo Aircraft Fleet Mix September 2017



Austin-Bergstrom International Airport

PAX Detail Report - September, 2017

Company	09/2017	09/2016	Period		YTD 2017	YTD 2016	YTD		2017 Share	2016 Share	Share Diff
			Difference	Change			Difference	Change			
AeroMexico Airlines	2,170	0	2,170	0.0	27,421	0	27,421	0.0	0.3	0.0	0.3
Air Canada	3,561	3,731	-170	-4.6	30,945	30,947	-2	0.0	0.3	0.3	0.0
Alaska Airlines	28,847	17,960	10,887	60.6	196,892	168,319	28,573	17.0	1.9	1.8	0.1
Allegiant Air	12,989	11,782	1,207	10.2	194,077	127,033	67,044	52.8	1.9	1.4	0.5
American Airlines	209,131	207,318	1,813	0.9	1,938,626	1,886,397	52,229	2.8	19.0	20.4	-1.4
Ameristarjet Charter	0	0	0	0.0	0	14	-14	-100.0	0.0	0.0	0.0
Atlas Air	0	0	0	0.0	0	453	-453	-100.0	0.0	0.0	0.0
British Airways	11,193	11,401	-208	-1.8	96,539	98,304	-1,765	-1.8	0.9	1.1	-0.1
Concesionaria Vuela Compañía de Aviación, S.A.P.I. de C.V.	640	1,646	-1,006	-61.1	11,659	3,676	7,983	217.2	0.1	0.0	0.1
Condor Airlines	3,510	336	3,174	944.6	19,046	8,142	10,904	133.9	0.2	0.1	0.1
Delta Air Lines	145,946	125,802	20,144	16.0	1,297,545	1,140,779	156,766	13.7	12.7	12.4	0.4
Frontier Airlines	39,597	34,079	5,518	16.2	348,163	230,390	117,773	51.1	3.4	2.5	0.9
Iberia Airlines	0	0	0	0.0	245	246	-1	-0.4	0.0	0.0	0.0
JetBlue Airways	44,169	44,147	22	0.0	453,726	429,822	23,904	5.6	4.4	4.7	-0.2
Southwest Airlines	407,982	383,788	24,194	6.3	3,798,412	3,533,096	265,316	7.5	37.2	38.3	-1.0
Sun Country Airlines	980	242	738	305.0	4,319	3,671	648	17.7	0.0	0.0	0.0
Swift Air	278	0	278	0.0	1,272	0	1,272	0.0	0.0	0.0	0.0
Texas Sky	0	129	-129	-100.0	604	1,234	-630	-51.1	0.0	0.0	0.0
Turkish Airlines	0	0	0	0.0	0	376	-376	-100.0	0.0	0.0	0.0
United Airlines	175,263	161,945	13,318	8.2	1,660,326	1,437,988	222,338	15.5	16.3	15.6	0.7
VIA Airlines	242	0	242	0.0	2,150	0	2,150	0.0	0.0	0.0	0.0
Virgin America	12,983	13,986	-1,003	-7.2	117,745	128,877	-11,132	-8.6	1.2	1.4	-0.2
Xtra Airways/Casino Express	0	0	0	0.0	136	1,167	-1,031	-88.3	0.0	0.0	0.0
Report Totals	1,099,481	1,018,292	81,189	8.0%	10,199,848	9,230,931	968,917	10.5%			

Statistics Included in Report:

Domestic Passengers:	Enplaned Revenue, Deplaned Revenue, Enplaned Non-Revenue, Deplaned Non-Revenue
International Passengers:	Enplaned Revenue, Deplaned Revenue, Enplaned Non-Revenue, Deplaned Non-Revenue
International Pre-Cleared Passengers:	Enplaned Revenue, Deplaned Revenue, Enplaned Non-Revenue, Deplaned Non-Revenue
South Terminal Domestic Passengers:	Enplaned Revenue, Deplaned Revenue, Enplaned Non-Revenue, Deplaned Non-Revenue

Austin-Bergstrom International Airport

Summary Landing Report

Landing Type: Total

Month	2017		2016		2015		% Change 2017 - 2016		% Change 2016 - 2015	
	Count	Weight	Count	Weight	Count	Weight	Count	Weight	Count	Weight
January	4,768	612,688,871	4,622	560,718,408	4,480	530,688,382	3.16%	9.27%	3.17%	5.66%
February	4,357	552,711,639	4,387	527,452,920	3,992	477,489,019	-0.68%	4.79%	9.89%	10.46%
March	5,307	685,661,659	5,151	639,655,137	4,872	584,604,521	3.03%	7.19%	5.73%	9.42%
April	5,179	689,402,051	4,892	614,643,711	4,875	593,462,176	5.87%	12.16%	0.35%	3.57%
May	5,529	736,484,083	5,096	630,853,941	5,161	625,876,151	8.50%	16.74%	-1.26%	0.80%
June	5,603	752,628,599	5,179	651,537,449	5,239	644,690,908	8.19%	15.52%	-1.15%	1.06%
July	5,698	763,088,836	5,233	663,015,597	5,503	676,131,170	8.89%	15.09%	-4.91%	-1.94%
August	5,490	741,110,019	5,181	660,099,361	5,277	652,770,571	5.96%	12.27%	-1.82%	1.12%
September	5,046	679,381,339	4,738	623,397,035	4,833	598,547,454	6.50%	8.98%	-1.97%	4.15%
October			4,923	649,182,343	4,891	611,952,269			0.65%	6.08%
November			4,775	624,303,554	4,815	605,234,834			-0.83%	3.15%
December			4,893	629,611,090	5,100	633,215,540			-4.06%	-0.57%
Totals for Selected Period	46,977	6,213,157,096	44,479	5,571,373,559	44,232	5,384,260,352	5.62%	11.52%	0.56%	3.48%
Yearly Totals	46,977	6,213,157,096	59,070	7,474,470,546	59,038	7,234,662,995			0.05%	3.31%