

**Austin-Bergstrom International Airport
Aviation Activity Report
Calendar Year 2017 vs 2016**

Combined Terminals

	5/2017	5/2016	Percent Change	01/2017 - 05/2017	01/2016 - 05/2016	Percent Change
ABIA						
Total Passenger Activity						
Domestic Enplaned Revenue	579,820	526,854	10.05	2,514,558	2,338,820	7.51
Domestic Deplaned Revenue	552,346	509,829	8.34	2,496,873	2,337,720	6.81
International Enplaned Revenue	14,919	10,195	46.34	57,020	43,374	31.46
International Deplaned Revenue	13,959	10,094	38.29	56,421	45,277	24.61
Domestic Enplaned Non-Revenue	14,193	10,169	39.57	63,202	52,083	21.35
Domestic Deplaned Non-Revenue	13,074	10,430	25.35	60,226	54,120	11.28
International Enplaned Non-Revenue	94	42	123.81	417	434	-3.92
International Deplaned Non-Revenue	61	53	15.09	356	431	-17.4
Intl Enplaned Pre-Cleared Revenue	1,769	1,891	-6.45	8,039	7,799	3.08
Intl Deplaned Pre-Cleared Revenue	1,608	1,836	-12.42	8,348	8,381	-0.39
Intl Enplaned Pre-Cleared Non-Revenue	32	33	-3.03	124	128	-3.12
Intl Deplaned Pre-Cleared Non-Revenue	23	24	-4.17	133	139	-4.32
South Terminal Domestic Enplaned Revenue	13,039	0	0.00	20,118	0	0
South Terminal Domestic Deplaned Revenue	12,886	0	0.00	19,812	0	0
South Terminal Domestic Enplaned Non-Revenue	1	0	0.00	1	0	0
South Terminal Domestic Deplaned Non-Revenue	0	0	0.00	0	0	0
ABIA Passenger Totals	1,217,824	1,081,450	12.61	5,305,648	4,888,706	8.53
<i>ABIA Enplaned Passenger Totals</i>	<i>623,867</i>	<i>549,184</i>	<i>13.60</i>	<i>2,663,479</i>	<i>2,442,638</i>	<i>9.04</i>
<i>ABIA Deplaned Passenger Totals</i>	<i>593,957</i>	<i>532,266</i>	<i>11.59</i>	<i>2,642,169</i>	<i>2,446,068</i>	<i>8.02</i>
<i>ABIA Domestic Passenger Totals</i>	<i>1,185,359</i>	<i>1,057,282</i>	<i>12.11</i>	<i>5,174,790</i>	<i>4,782,743</i>	<i>8.20</i>
<i>ABIA International Passenger Totals</i>	<i>32,465</i>	<i>24,168</i>	<i>34.33</i>	<i>130,858</i>	<i>105,963</i>	<i>23.49</i>

CURRENT PASSENGER RECORD = 1,217,824 RECORD SET = MAY 2017

Total Aircraft Operations

Air Carrier	10,826	9,880	9.57	49,098	46,855	4.79
Commuter & Air Taxi	1,195	1,248	-4.25	6,459	6,174	4.62
Military	726	795	-8.68	4,054	4,217	-3.87
General Aviation						
Itinerant	4,176	4,132	1.06	21,317	20,268	5.18
Local	203	160	26.88	915	1,100	-16.82
Total G.A.	4,379	4,292	2.03	22,232	21,368	4.04
Total Operations	17,126	16,215	5.62	81,843	78,614	4.11

**Austin-Bergstrom International Airport
Aviation Activity Report
Calendar Year 2017 vs 2016**

By Terminal

	5/2017	5/2016	Percent Change	01/2017 - 05/2017	01/2016 - 05/2016	Percent Change
<u>Barbara Jordan Terminal (BJT)</u>						
Passenger Activity						
Domestic Enplaned Revenue	579,820	526,854	10.05	2,514,558	2,338,820	7.51
Domestic Deplaned Revenue	552,346	509,829	8.34	2,496,873	2,337,720	6.81
International Enplaned Revenue	14,919	10,195	46.34	57,020	43,374	31.46
International Deplaned Revenue	13,959	10,094	38.29	56,421	45,277	24.61
Domestic Enplaned Non-Revenue	14,193	10,169	39.57	63,202	52,083	21.35
Domestic Deplaned Non-Revenue	13,074	10,430	25.35	60,226	54,120	11.28
International Enplaned Non-Revenue	94	42	123.81	417	434	-3.92
International Deplaned Non-Revenue	61	53	15.09	356	431	-17.40
Intl Enplaned Pre-Cleared Revenue	1,769	1,891	-6.45	8,039	7,799	3.08
Intl Deplaned Pre-Cleared Revenue	1,608	1,836	-12.42	8,348	8,381	-0.39
Intl Enplaned Pre-Cleared Non-Revenue	32	33	-3.03	124	128	-3.12
Intl Deplaned Pre-Cleared Non-Revenue	23	24	-4.17	133	139	-4.32
Barbara Jordan Terminal Passenger Totals	1,191,898	1,081,450	10.21	5,265,717	4,888,706	7.71
<i>BJT Enplaned Passenger Totals</i>	<i>610,827</i>	<i>549,184</i>	<i>11.22</i>	<i>2,643,360</i>	<i>2,442,638</i>	<i>8.22</i>
<i>BJT Deplaned Passenger Totals</i>	<i>581,071</i>	<i>532,266</i>	<i>9.17</i>	<i>2,622,357</i>	<i>2,446,068</i>	<i>7.21</i>
<i>BJT Domestic Passenger Totals</i>	<i>1,159,433</i>	<i>1,057,282</i>	<i>9.66</i>	<i>5,134,859</i>	<i>4,782,743</i>	<i>7.36</i>
<i>BJT International Passenger Totals</i>	<i>32,465</i>	<i>24,168</i>	<i>34.33</i>	<i>130,858</i>	<i>105,963</i>	<i>23.49</i>
<u>South Terminal (ST)</u>						
Passenger Activity						
South Terminal Domestic Enplaned Revenue	13,039	0	0.00	20,118	0	0.00
South Terminal Domestic Deplaned Revenue	12,886	0	0.00	19,812	0	0.00
South Terminal Domestic Enplaned Non-Revenue	1	0	0.00	1	0	0.00
South Terminal Domestic Deplaned Non-Revenue	0	0	0.00	0	0	0.00
South Terminal Passenger Totals	25,926	0	0.00	39,931	0	0.00

Austin-Bergstrom International Airport Aviation Activity Report Calendar Year 2017 vs 2016

	5/2017	5/2016	Percent Change	01/2017 - 05/2017	01/2016 - 05/2016	Percent Change
<u>Total Cargo Activity</u>						
Mail						
Domestic Enplaned Mail	204,373	141,153	44.79	965,948	563,513	71.42
Domestic Deplaned Mail	407,133	211,356	92.63	1,703,529	962,676	76.96
International Enplaned Mail	0	0	0.00	0	0	0.00
International Deplaned Mail	0	0	0.00	0	0	0.00
South Terminal-Intl Enplaned Mail	0	0	0.00	0	0	0.00
South Terminal-Intl Deplaned Mail	0	0	0.00	0	0	0.00
Mail Totals	611,506	352,509	73.47	2,669,477	1,526,189	74.91
Cargo						
Domestic Enplaned Cargo	5,001,805	4,807,702	4.04	24,097,298	25,128,048	-4.10
Domestic Deplaned Cargo	6,975,675	6,543,020	6.61	33,988,010	30,557,289	11.23
International Enplaned Cargo	649,120	238,638	172.01	3,819,351	2,053,797	85.97
International Deplaned Cargo	285,929	159,665	79.08	2,186,578	1,589,862	37.53
South Terminal-Intl Enplaned Cargo	0	0	0.00	0	0	0.00
South Terminal-Intl Deplaned Cargo	0	0	0.00	0	0	0.00
Cargo Totals	12,912,529	11,749,025	9.90	64,091,237	59,328,996	8.03
Belly Freight						
Domestic Enplaned Belly Freight	272,998	242,011	12.80	1,259,365	1,189,294	5.89
Domestic Deplaned Belly Freight	562,633	488,522	15.17	2,506,895	2,410,227	4.01
International Enplaned Belly Freight	141,385	160,235	-11.76	1,030,995	889,899	15.86
International Deplaned Belly Freight	754,657	529,538	42.51	3,581,599	2,582,100	38.71
South Terminal-Intl Enplaned Belly Freight	0	0	0.00	0	0	0.00
South Terminal-Intl Deplaned Belly Freight	0	0	0.00	0	0	0.00
Belly Freight Totals	1,731,673	1,420,306	21.92	8,378,854	7,071,520	18.49
Cargo Totals (Mail, Cargo, Belly Freight)	15,255,708	13,521,840	12.82	75,139,568	67,926,705	10.62
<i>Enplaned Cargo Totals</i>	<i>6,269,681</i>	<i>5,589,739</i>	<i>12.16</i>	<i>31,172,957</i>	<i>29,824,551</i>	<i>4.52</i>
<i>Deplaned Cargo Totals</i>	<i>8,986,027</i>	<i>7,932,101</i>	<i>13.29</i>	<i>43,966,611</i>	<i>38,102,154</i>	<i>15.39</i>
<i>Domestic Cargo Totals</i>	<i>13,424,617</i>	<i>12,433,764</i>	<i>7.97</i>	<i>64,521,045</i>	<i>60,811,047</i>	<i>6.10</i>
<i>International Cargo Totals</i>	<i>1,831,091</i>	<i>1,088,076</i>	<i>68.29</i>	<i>10,618,523</i>	<i>7,115,658</i>	<i>49.23</i>

CURRENT CARGO RECORD = 40,215,518

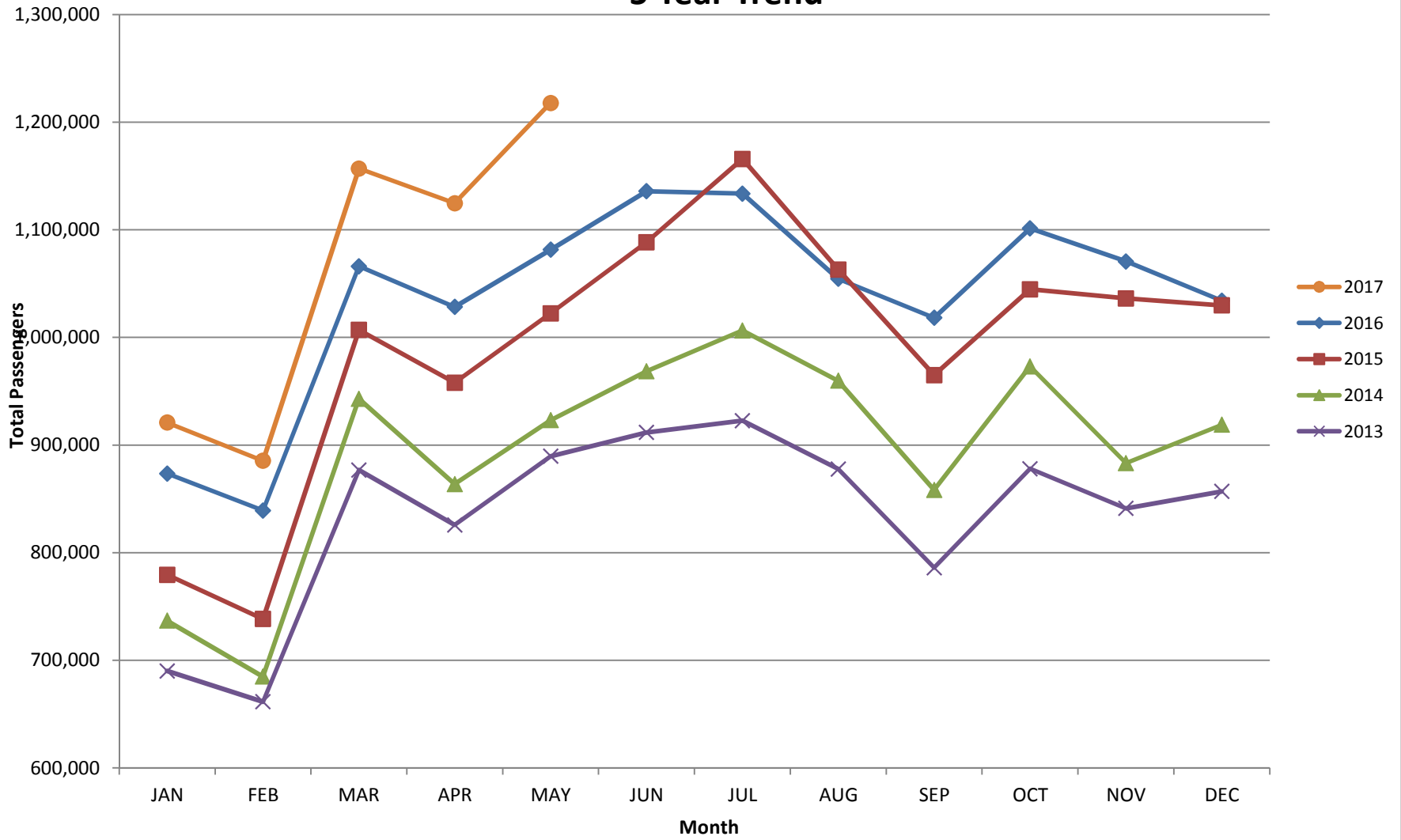
RECORD SET = MARCH 2001

AUS – Airline Codes
May 2017

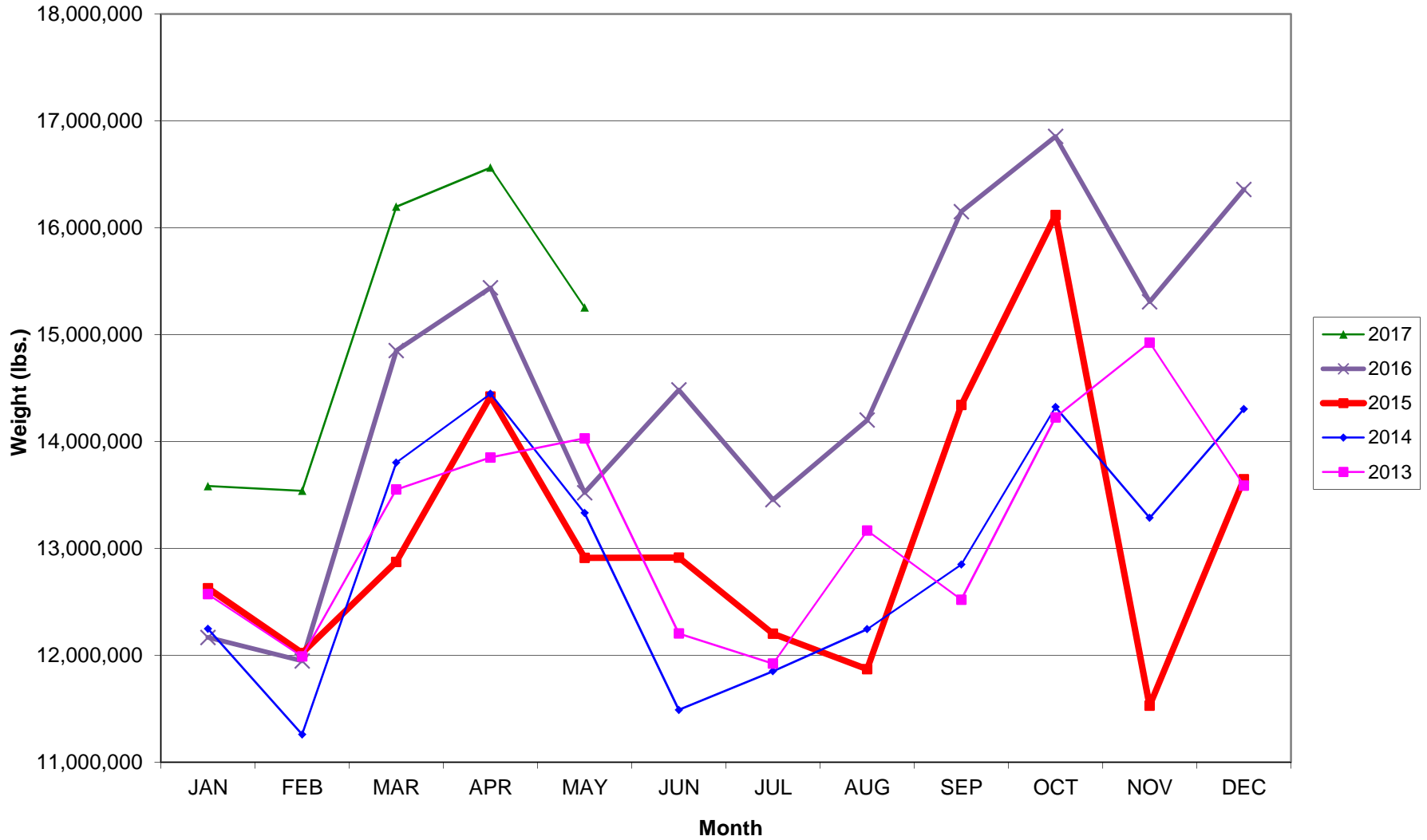
<u>Code</u>	<u>Carrier</u>
AM	AeroMexico Airlines
AC	Air Canada
AS	Alaska Airlines, Inc.
G4	Allegiant Air, LLC
AA	American Airlines, Inc.
BA	British Airways Plc
DE	Condor Airlines
DL	Delta Airlines
F9	Frontier Airlines
B6	JetBlue Airways Corp.
WN	Southwest Airlines
SY	Sun Country Airlines/ MN Airlines, LLC
UA	United Airlines, Inc.
VC	VIA Airlines
VX	Virgin America Inc.
Y4	Volaris/Concesionaria Vuela Compañía de Aviación, S.A.P.I. de C.V.

AUSTIN PASSENGER TRAFFIC

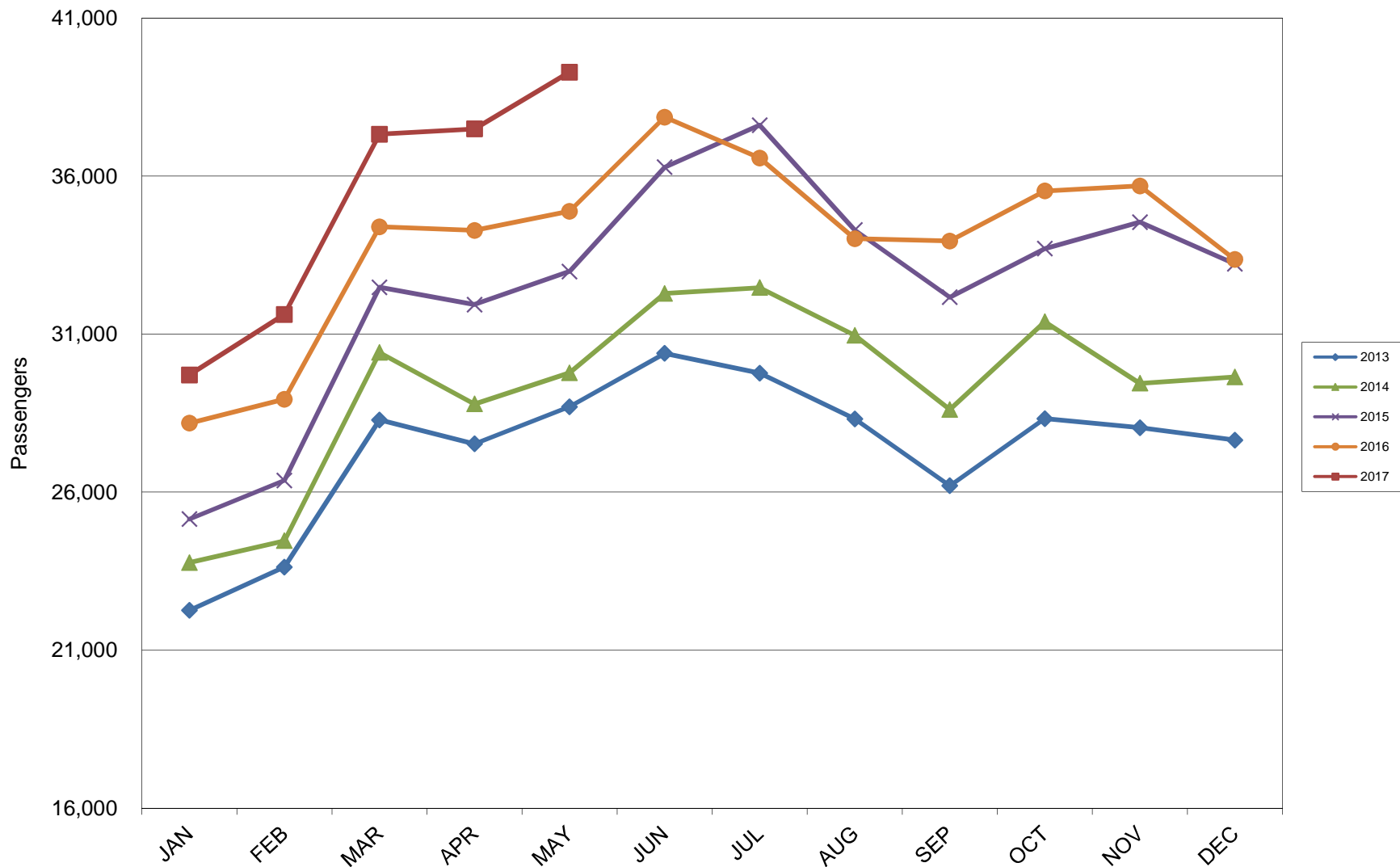
5 Year Trend



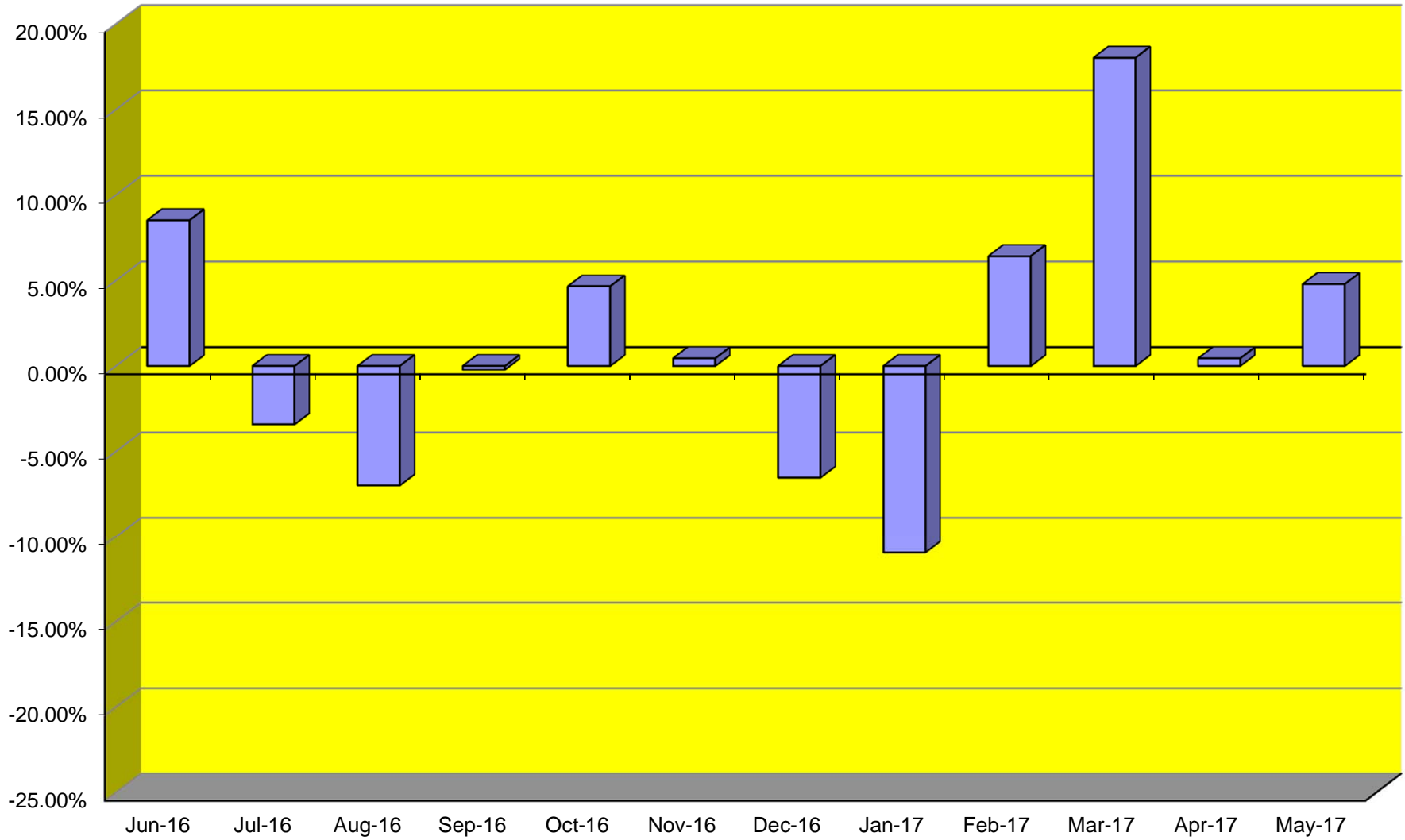
TOTAL CARGO POUNDAGE - AUSTIN, TEXAS



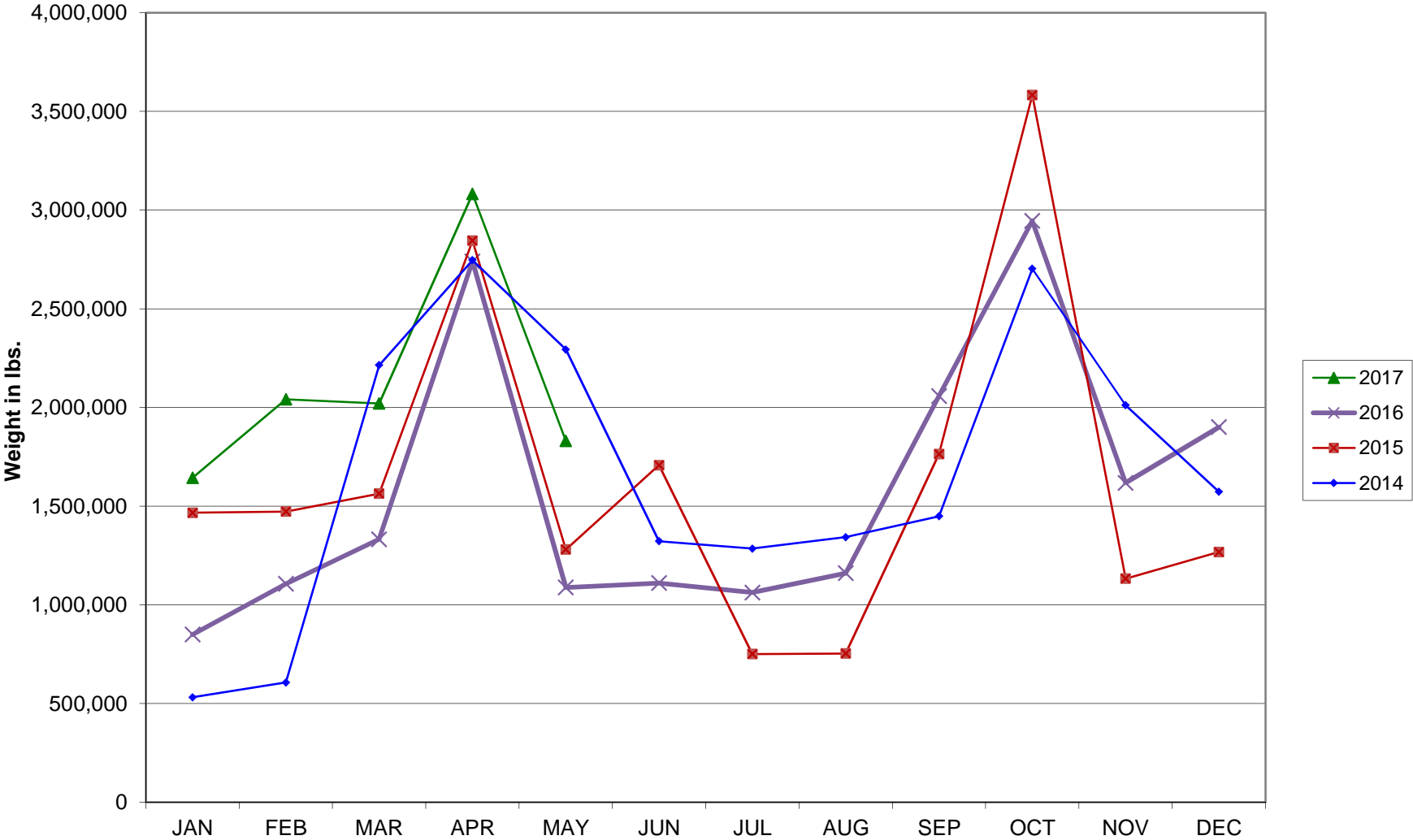
Average Daily Passengers



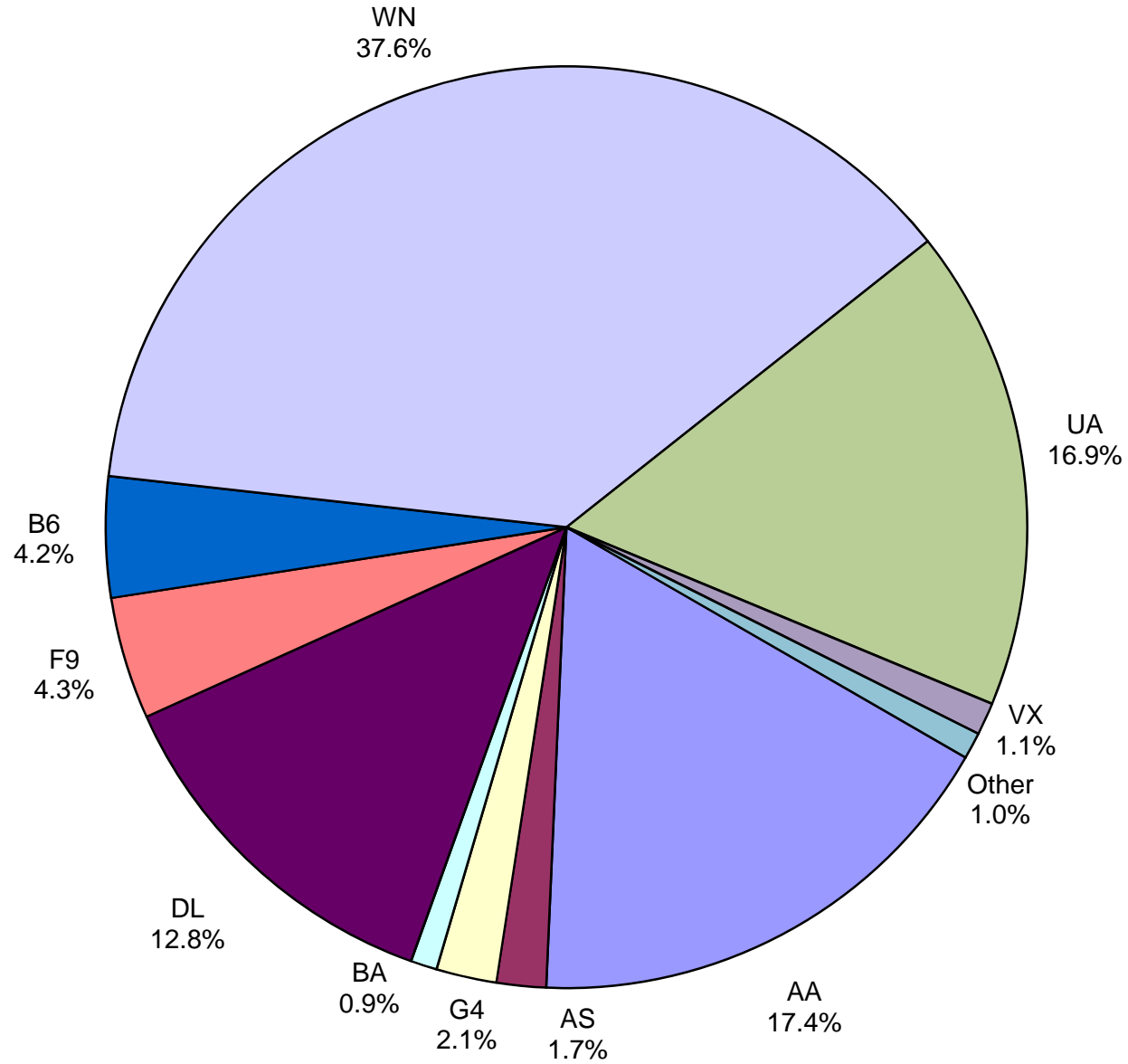
Monthly % Change in Average Daily Passengers



HISTORY OF INTERNATIONAL AIR CARGO



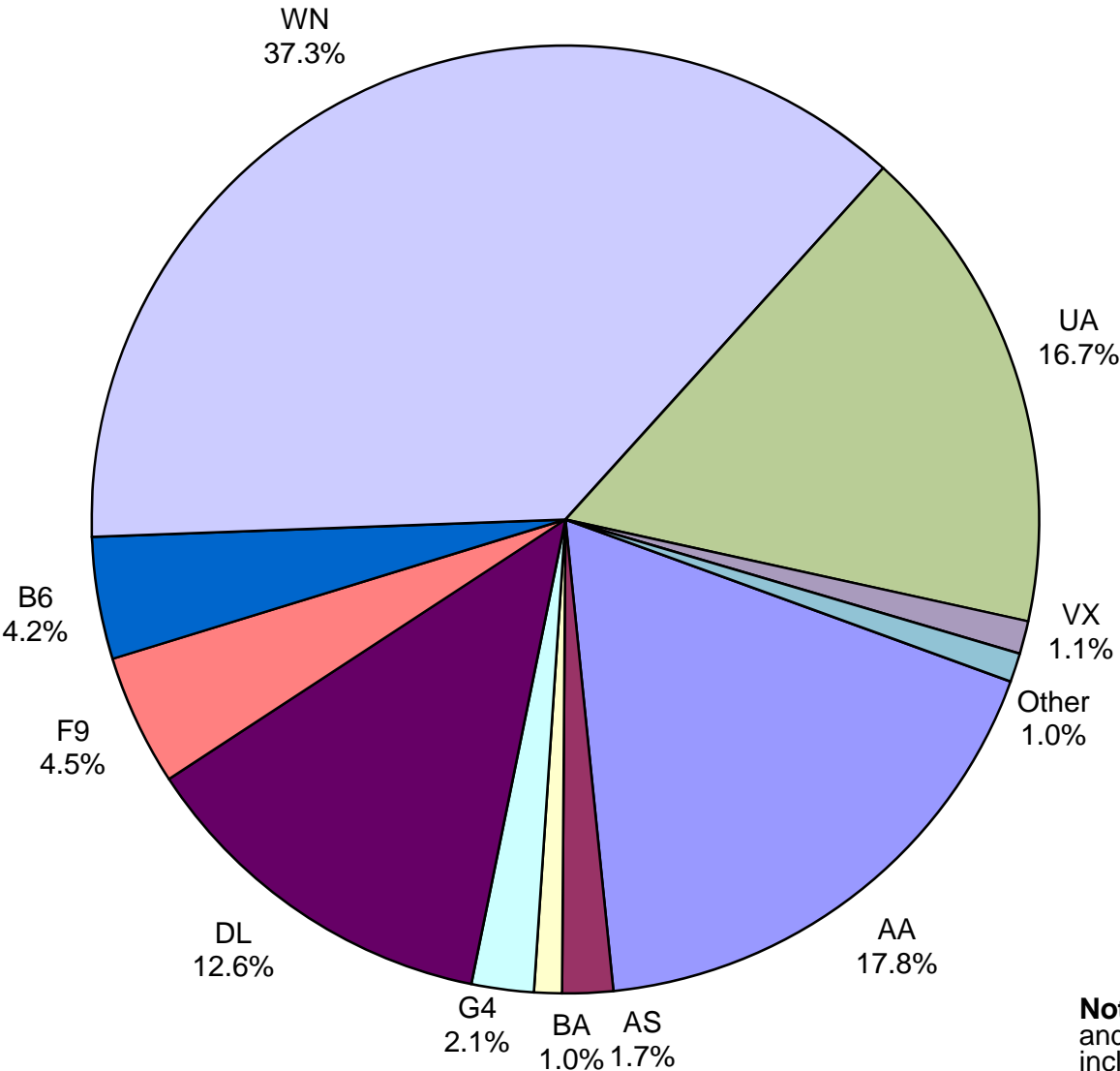
**Total Passengers
May 2017**



Other: Aeromexico, Air Canada LLC, Condor Airlines, Sun Country, VIA Airlines and Volaris

Note: American, Delta and United Airlines percentages include Affiliates.

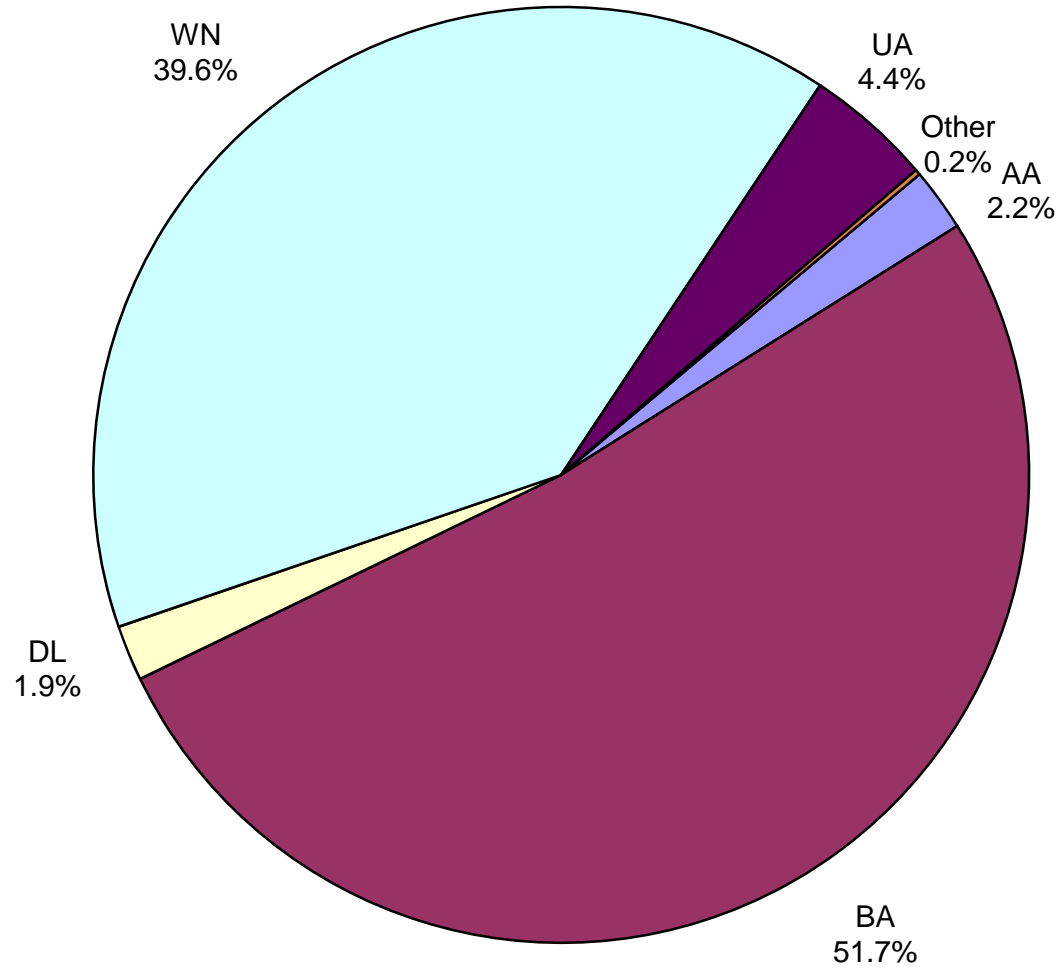
**All Passenger Carriers
Enplaned Revenue Passengers
May 2017**



Other: Aeromexico, Air Canada, Condor Airlines, Sun Country, VIA Airlines and Volaris

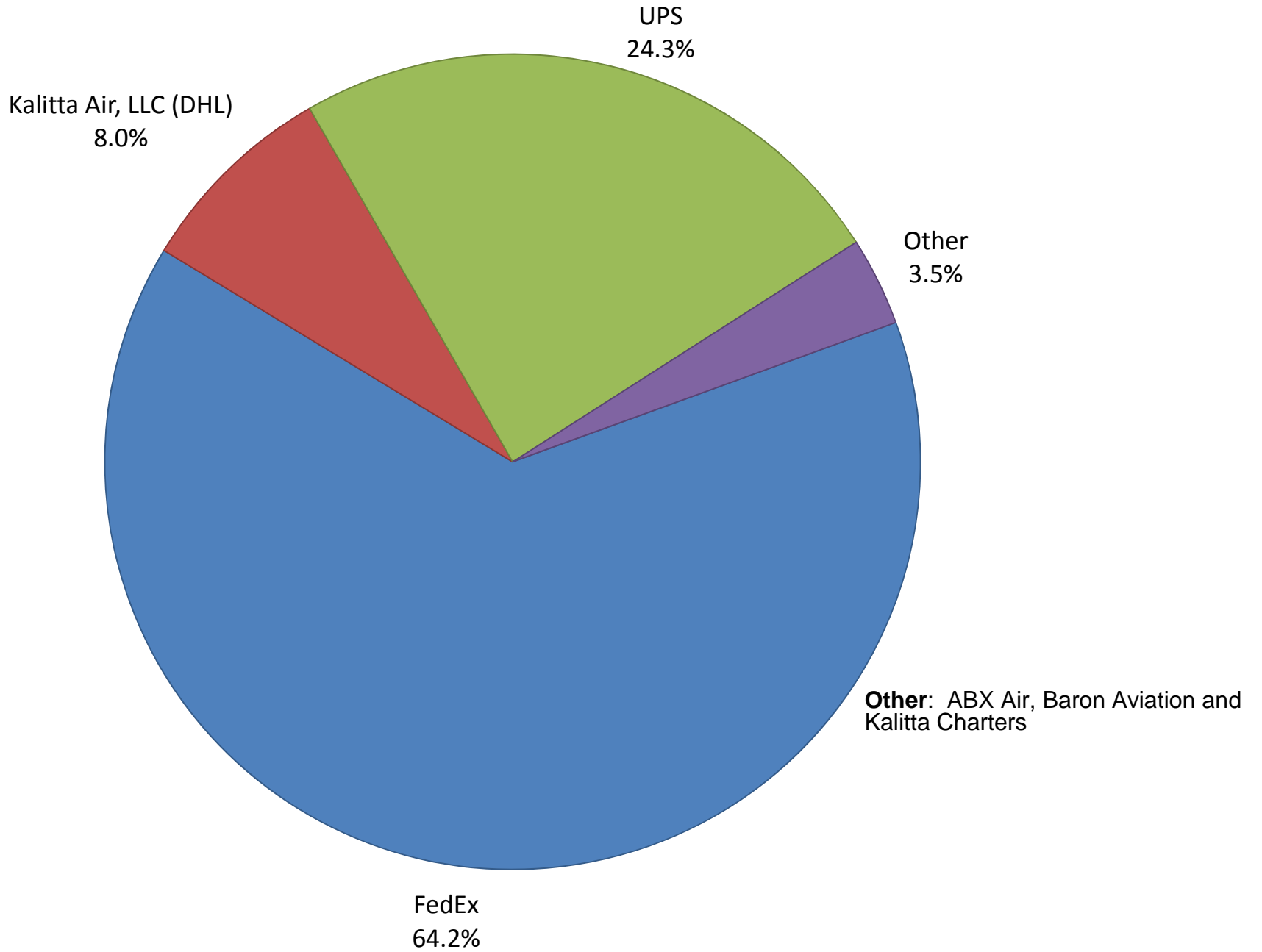
Note: American/US Airways, Delta and United Airlines percentages include Affiliates.

**AUS Belly Freight Market Shares
May 2017**

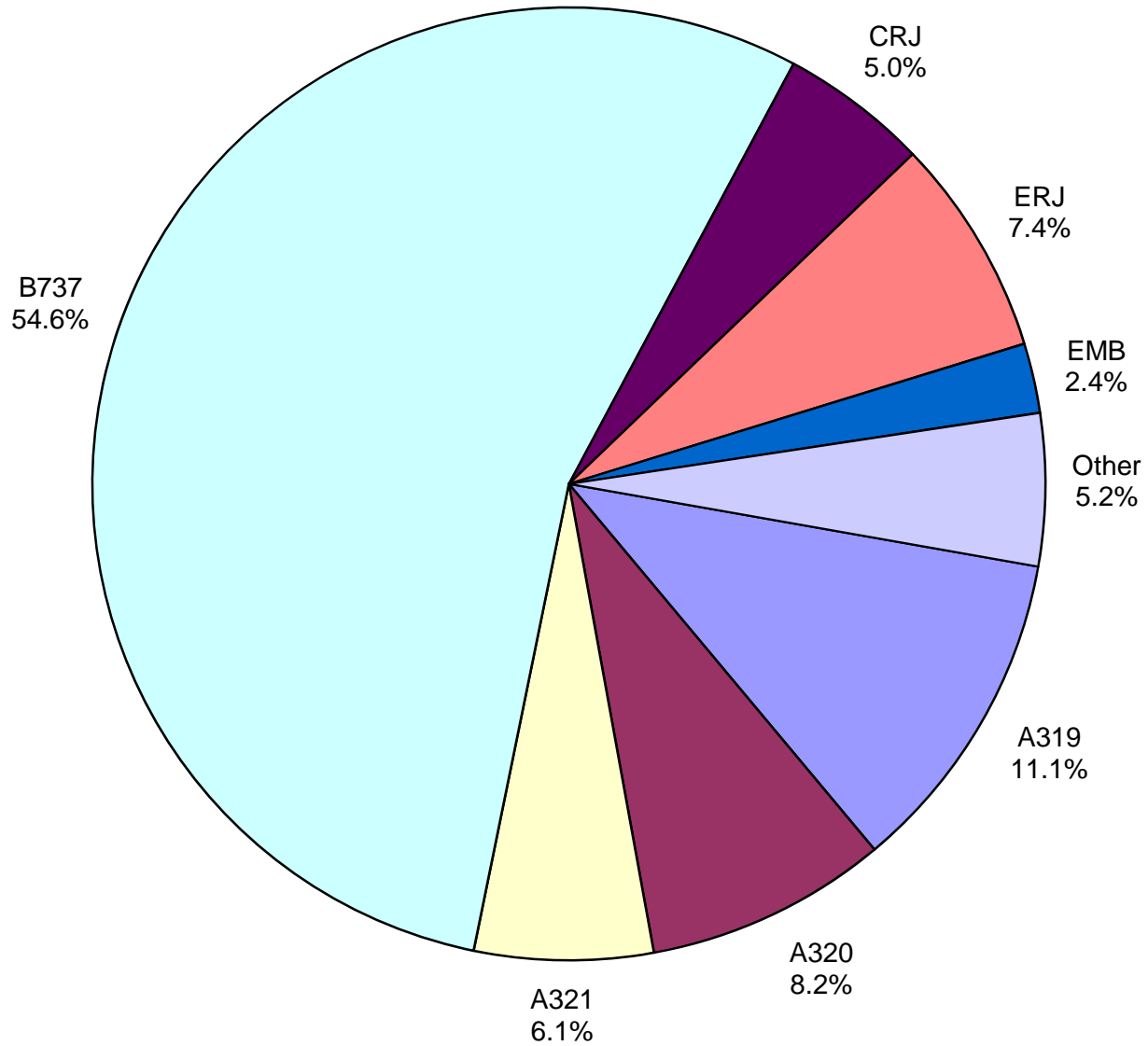


Other = Alaska Airlines

Air Cargo Market Share May 2017

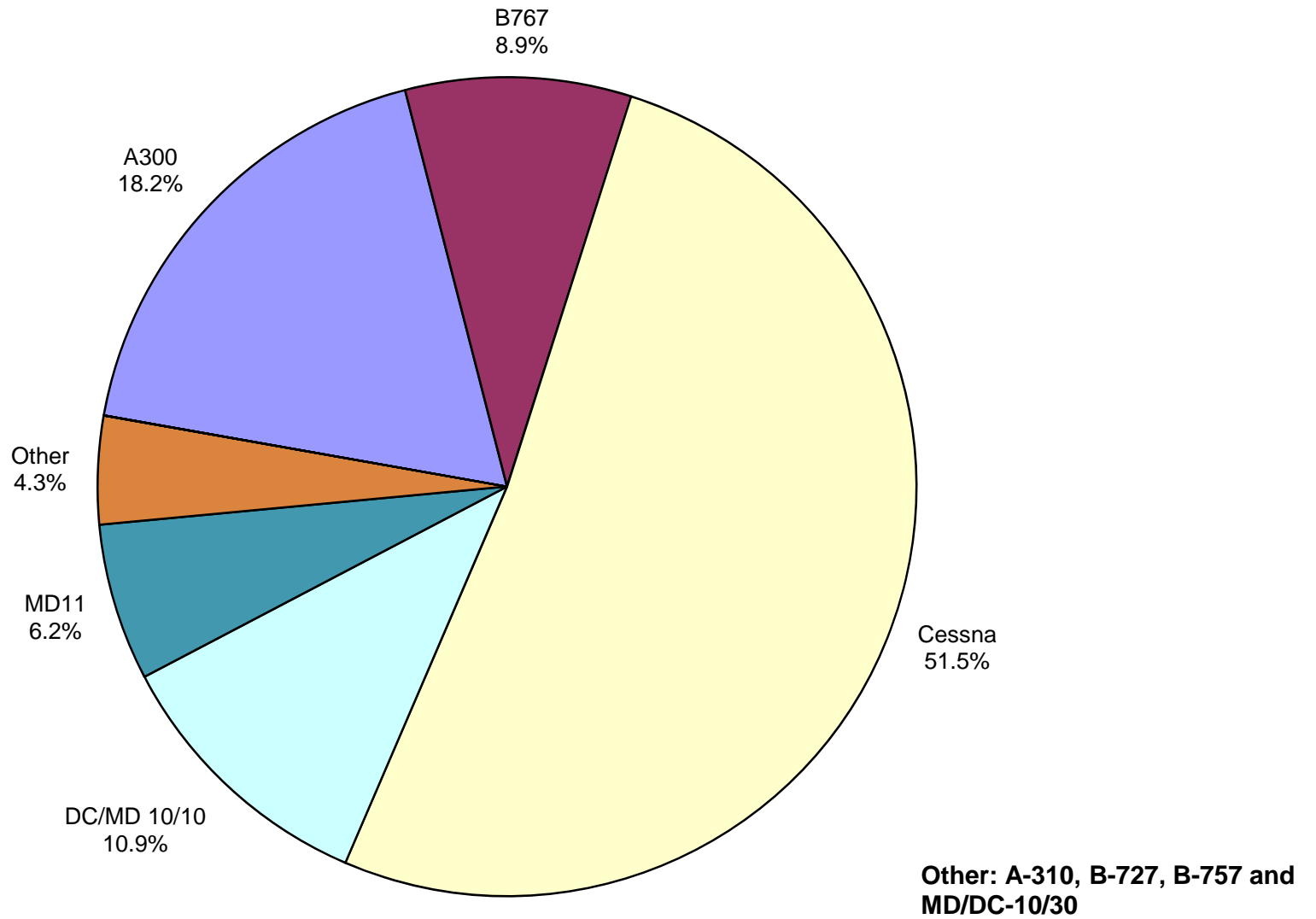


**AUS Scheduled Passenger Aircraft Fleet Mix
May 2017**



Other: B-717, B-757,
B-767, B-787-900,
MD-82, MD-83,
MD-88, MD-90

**AUS Scheduled Cargo Aircraft Fleet Mix
May 2017**



Austin-Bergstrom International Airport

PAX Detail Report - May, 2017

Company	05/2017	05/2016	Period		YTD 2017	YTD 2016	YTD		2017 Share	2016 Share	Share Diff
			Difference	Change			Difference	Change			
AeroMexico Airlines	3,009	0	3,009	0.0	14,930	0	14,930	0.0	0.3	0.0	0.3
Air Canada	3,432	3,784	-352	-9.3	16,644	16,447	197	1.2	0.3	0.3	0.0
Alaska Airlines	21,137	22,298	-1,161	-5.2	97,474	87,015	10,459	12.0	1.8	1.8	0.1
Allegiant Air	25,805	14,904	10,901	73.1	98,726	61,873	36,853	59.6	1.9	1.3	0.6
American Airlines	211,495	229,164	-17,669	-7.7	1,013,366	1,001,102	12,264	1.2	19.1	20.5	-1.4
Ameristarjet Charter	0	0	0	0.0	0	14	-14	-100.0	0.0	0.0	0.0
Atlas Air	0	0	0	0.0	0	453	-453	-100.0	0.0	0.0	0.0
British Airways	11,266	11,880	-614	-5.2	51,968	51,383	585	1.1	1.0	1.1	-0.1
Condor Airlines	3,390	0	3,390	0.0	3,390	0	3,390	0.0	0.1	0.0	0.1
Delta Air Lines	155,569	135,442	20,127	14.9	660,054	604,784	55,270	9.1	12.4	12.4	0.1
Frontier Airlines	52,257	27,064	25,193	93.1	155,223	99,909	55,314	55.4	2.9	2.0	0.9
Iberia Airlines	0	0	0	0.0	245	246	-1	-0.4	0.0	0.0	0.0
JetBlue Airways	51,439	49,926	1,513	3.0	243,270	224,176	19,094	8.5	4.6	4.6	0.0
Southwest Airlines	457,553	410,095	47,458	11.6	2,003,672	1,899,887	103,785	5.5	37.8	38.9	-1.1
Sun Country Airlines	348	406	-58	-14.3	2,382	2,375	7	0.3	0.0	0.0	0.0
Swift Air	0	0	0	0.0	426	0	426	0.0	0.0	0.0	0.0
Texas Sky	0	147	-147	-100.0	604	634	-30	-4.7	0.0	0.0	0.0
United Airlines	206,068	160,998	45,070	28.0	869,510	768,089	101,421	13.2	16.4	15.7	0.7
VIA Airlines	121	0	121	0.0	121	0	121	0.0	0.0	0.0	0.0
Virgin America	13,784	15,195	-1,411	-9.3	66,336	69,595	-3,259	-4.7	1.3	1.4	-0.2
Volaris	1,151	0	1,151	0.0	7,171	0	7,171	0.0	0.1	0.0	0.1
Xtra Airways/Casino Express	0	147	-147	-100.0	136	724	-588	-81.2	0.0	0.0	0.0
Report Totals	1,217,824	1,081,450	136,374	12.6%	5,305,648	4,888,706	416,942	8.5%			

Statistics Included in Report:

Domestic Passengers:	Enplaned Revenue, Deplaned Revenue, Enplaned Non-Revenue, Deplaned Non-Revenue
International Passengers:	Enplaned Revenue, Deplaned Revenue, Enplaned Non-Revenue, Deplaned Non-Revenue
International Pre-Cleared Passengers:	Enplaned Revenue, Deplaned Revenue, Enplaned Non-Revenue, Deplaned Non-Revenue
South Terminal Domestic Passengers:	Enplaned Revenue, Deplaned Revenue, Enplaned Non-Revenue, Deplaned Non-Revenue

Austin-Bergstrom International Airport

Summary Landing Report

Landing Type: Total

Month	2017		2016		2015		% Change 2017 - 2016		% Change 2016 - 2015	
	Count	Weight	Count	Weight	Count	Weight	Count	Weight	Count	Weight
January	4,768	612,688,871	4,622	560,718,408	4,480	530,688,382	3.16%	9.27%	3.17%	5.66%
February	4,357	552,711,639	4,387	527,452,920	3,992	477,489,019	-0.68%	4.79%	9.89%	10.46%
March	5,307	685,661,659	5,151	639,655,137	4,872	584,604,521	3.03%	7.19%	5.73%	9.42%
April	5,179	689,402,051	4,892	614,643,711	4,875	593,462,176	5.87%	12.16%	0.35%	3.57%
May	5,529	736,484,083	5,096	630,853,941	5,161	625,876,151	8.50%	16.74%	-1.26%	0.80%
June			5,179	651,537,449	5,239	644,690,908			-1.15%	1.06%
July			5,233	663,015,597	5,503	676,131,170			-4.91%	-1.94%
August			5,181	660,099,361	5,277	652,770,571			-1.82%	1.12%
September			4,738	623,397,035	4,833	598,547,454			-1.97%	4.15%
October			4,923	649,182,343	4,891	611,952,269			0.65%	6.08%
November			4,775	624,303,554	4,815	605,234,834			-0.83%	3.15%
December			4,893	629,611,090	5,100	633,215,540			-4.06%	-0.57%
Totals for Selected Period	25,140	3,276,948,303	24,148	2,973,324,117	23,380	2,812,120,249	4.11%	10.21%	3.28%	5.73%
Yearly Totals	25,140	3,276,948,303	59,070	7,474,470,546	59,038	7,234,662,995			0.05%	3.31%