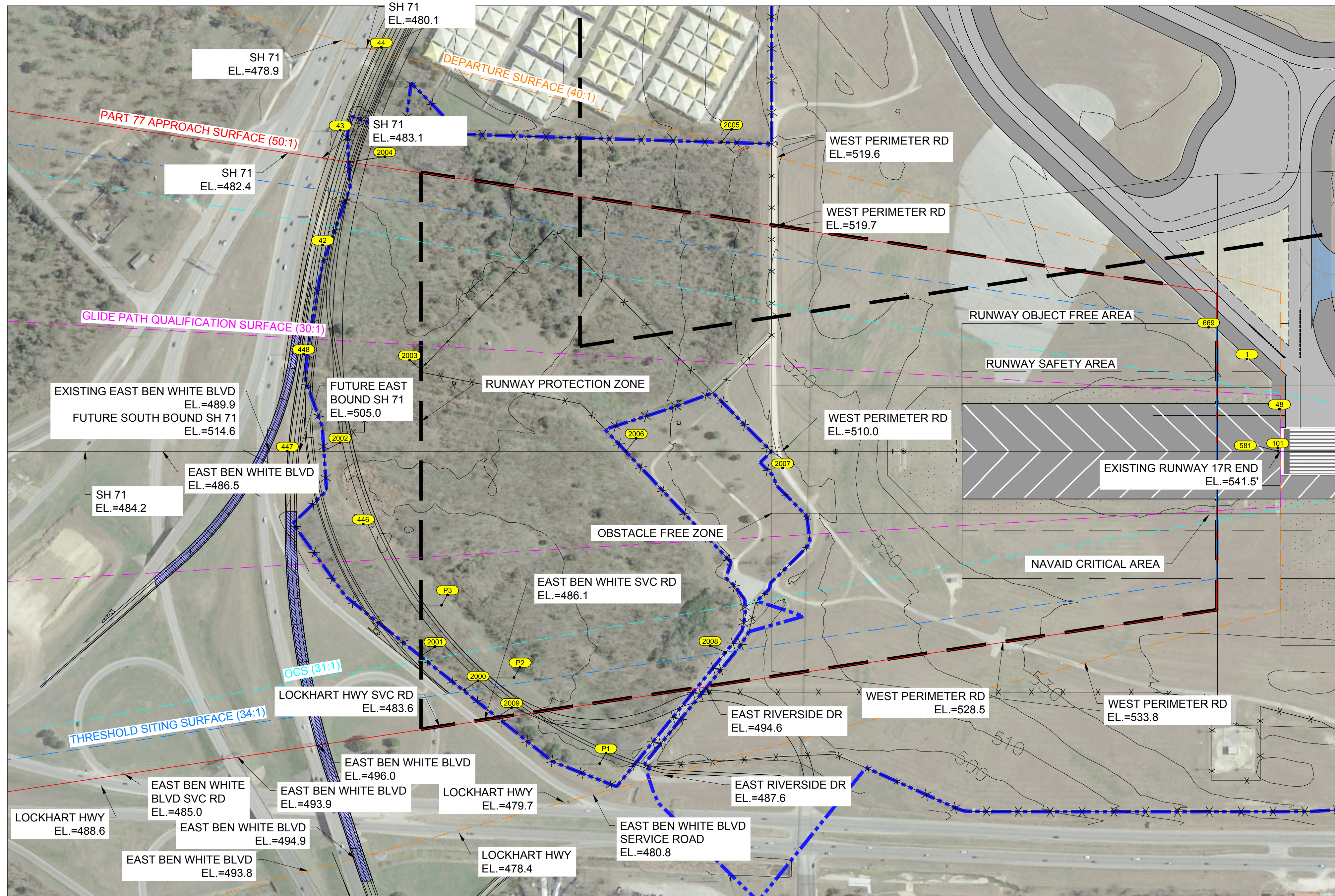


RUNWAY 17R PLAN VIEW



RUNWAY 17R APPROACH/DEPARTURE SURFACES

OBSTACLE ID	DESCRIPTION	DATE OF SURVEY	MSL (ft)	AGL (ft)	PART 77 APPROACH MSL (ft)		DEPARTURE MSL (ft)		THRESHOLD SITING SURFACE MSL (ft)		GQS MSL (ft)		OCS MSL (ft)		DISPOSITION	TRIGGERING EVENT EXPECTED DATE OF REMOVAL
					SURFACE ELEVATION	SURFACE PENETRATION	SURFACE ELEVATION	SURFACE PENETRATION	SURFACE ELEVATION	SURFACE PENETRATION	SURFACE ELEVATION	SURFACE PENETRATION	SURFACE ELEVATION	SURFACE PENETRATION		
1	SIGN	2016	544.5	3.24	541.2	N/A	541.2	-1	541.2	N/A	541.2	N/A	541.2	N/A	Fixed Function	Existing / TBD
42	POWER TRANSMISSION PYLON	2016	562.6	79.65	483.0	N/A	483.0	N/A	483.0	N/A	483.0	N/A	483.0	N/A	Fixed Function	Existing / TBD
43	POWER TRANSMISSION PYLON	2016	559.8	86.72	473.1	N/A	473.1	N/A	473.1	N/A	473.1	N/A	473.1	N/A	Fixed Function	Existing / TBD
44	POWER TRANSMISSION PYLON	2016	566.9	93.42	473.5	N/A	473.5	N/A	473.5	N/A	473.5	N/A	473.5	N/A	Fixed Function	Existing / TBD
48	NAVAID	2016	543.4	1.42	542.0	N/A	542.0	1.8	542.0	N/A	542.0	1.8	542.0	N/A	Fixed Function	Existing / TBD
101	RUNWAY LIGHT	2016	542.8	1.26	541.6	N/A	541.6	1.1	541.6	N/A	541.6	1.0	541.6	N/A	Fixed Function	Existing / TBD
446	POWER TRANSMISSION PYLON	2016	576.8	86.95	489.9	N/A	489.9	N/A	489.9	N/A	489.9	N/A	489.9	N/A	Fixed Function	Existing / TBD
447	POWER TRANSMISSION PYLON	2016	577.8	89.02	488.8	N/A	488.8	N/A	488.8	N/A	488.8	N/A	488.8	N/A	Fixed Function	Existing / TBD
448	POWER TRANSMISSION PYLON	2016	566.6	80.39	486.2	N/A	486.2	N/A	486.2	N/A	486.2	N/A	486.2	N/A	Fixed Function	Existing / TBD
581	RUNWAY LIGHT	2016	542.8	1.32	541.5	N/A	541.5	1.1	541.5	N/A	541.5	1.0	541.5	N/A	Fixed Function	Existing / TBD
669	SIGN	2016	545.5	3.74	541.8	3.6	541.8	N/A	541.8	2.7	541.8	N/A	541.8	N/A	Fixed Function	Existing / TBD
2000	FENCE	2016	492.9	8.00	484.9	N/A	484.9	N/A	484.9	N/A	484.9	N/A	484.9	N/A	Fixed Function	Existing / TBD
2001	FENCE	2016	490.0	8.00	482.0	N/A	482.0	N/A	482.0	N/A	482.0	N/A	482.0	N/A	Fixed Function	Existing / TBD
2002	FENCE	2016	497.0	8.00	489.0	N/A	489.0	N/A	489.0	N/A	489.0	N/A	489.0	N/A	Fixed Function	Existing / TBD
2003	FENCE	2016	491.2	8.00	483.2	N/A	483.2	N/A	483.2	N/A	483.2	N/A	483.2	N/A	Fixed Function	Existing / TBD
2004	FENCE	2016	484.0	8.00	476.0	N/A	476.0	N/A	476.0	N/A	476.0	N/A	476.0	N/A	Fixed Function	Existing / TBD
2005	FENCE	2016	517.9	8.00	509.9	N/A	509.9	N/A	509.9	N/A	509.9	N/A	509.9	N/A	Fixed Function	Existing / TBD
2006	FENCE	2016	505.1	8.00	497.1	N/A	497.1	N/A	497.1	N/A	497.1	N/A	497.1	N/A	Fixed Function	Existing / TBD
2007	FENCE	2016	516.1	8.00	508.1	N/A	508.1	N/A	508.1	N/A	508.1	N/A	508.1	N/A	Fixed Function	Existing / TBD
2008	FENCE	2016	505.1	8.00	497.1	N/A	497.1	N/A	497.1	N/A	497.1	N/A	497.1	N/A	Fixed Function	Existing / TBD
2009	FENCE	2016	496.0	8.00	488.0	N/A	488.0	N/A	488.0	N/A	488.0	N/A	488.0	N/A	Fixed Function	Existing / TBD
P1	POWER TRANSMISSION PYLON	2016	586.6	97.0	489.6	N/A	489.6	N/A	489.6	N/A	489.6	N/A	489.6	N/A	Fixed Function	Existing / TBD
P2	POWER TRANSMISSION PYLON	2016	584.5	97.0	487.5	N/A	487.5	N/A	487.5	N/A	487.5	N/A	487.5	N/A	Fixed Function	Existing / TBD
P3	POWER TRANSMISSION PYLON	2016	583.2	97.0	486.2	N/A	486.2	N/A	486.2	N/A	486.2	N/A	486.2	N/A	Fixed Function	Existing / TBD

* FAA Airspace Determination Required

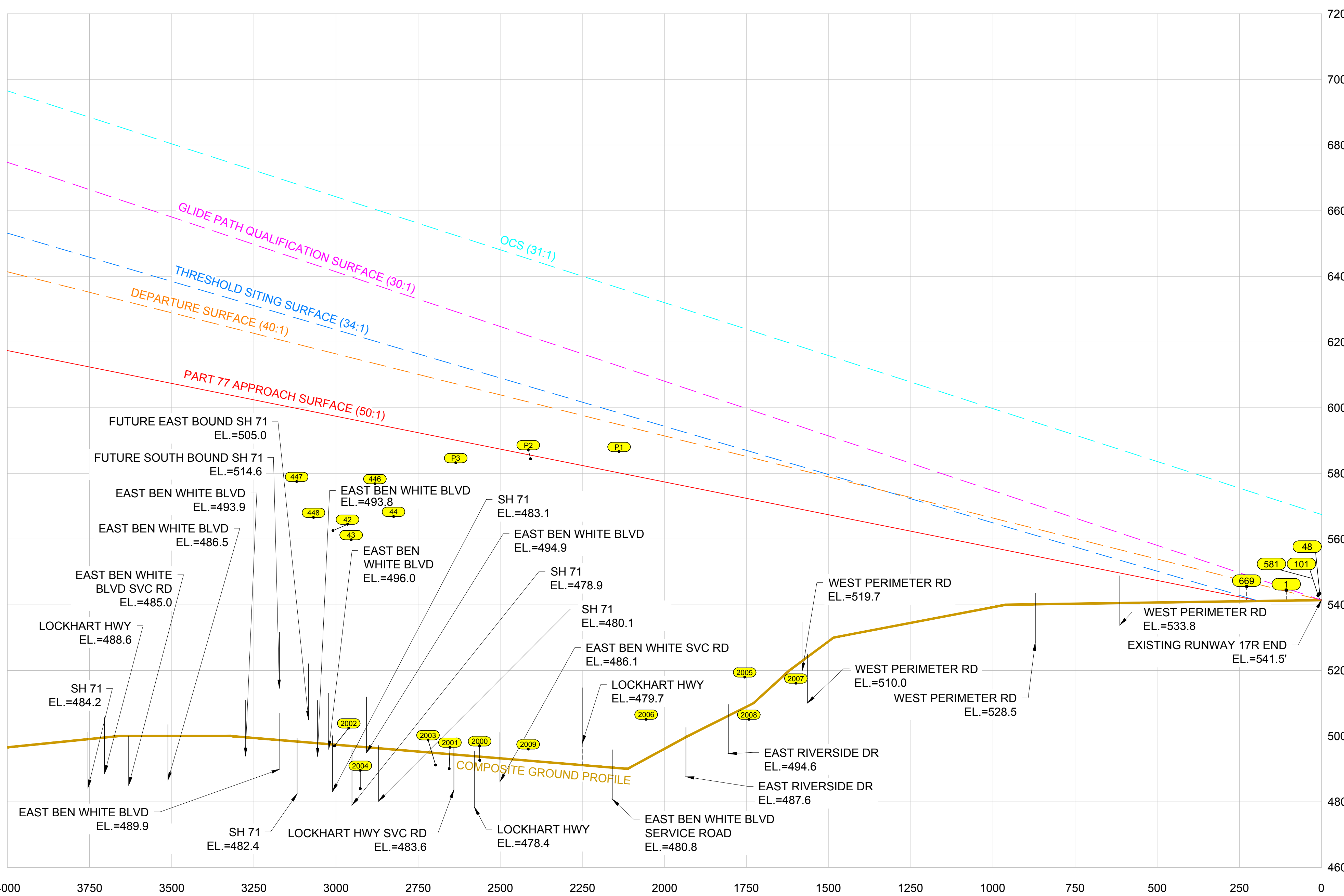
NOTES:

- A. PER FAR PART 77.23(b), THE FOLLOWING TRAVERSE WAYS MUST BE INCREASED BY: 10' FOR (PRIVATE ROAD, 15' FOR A (NON INTERSTATE, 17' FOR A (INTERSTATE, AND 23' FOR (RAILROADS.
- B. EACH ROADWAY OR RAILROAD IN THE OBSTACLE DATA SHEET SHOULD INCLUDE THE APPROPRIATE (P), (N), (I), OR (R) DESIGNATION AFTER THE DESCRIPTION.
- C. SOURCE: OBSTRUCTION DATA FROM 2017 ISB SURVEY BY AECOM

DRAWING LEGEND

ITEM	EXISTING
PACS & SACS	⊗
LOC	○
NAVAIDS	★
RVR	▽
PAPI	⊙
GLIDE SLOPE ANTENNA	⊙
WIND SOCK	⊙
ROTATING BEACON	★
DISTANCE MEASURING EQUIPMENT	■
AIRPORT PROPERTY LINE	---
GQS	---
OCS	---
PART 77 INNER APPROACH	---
ROFA	---
RFZ	---
RPZ	---
RSA	---
RUNWAY CENTERLINE	---
TERPS	---
TSS	---
SECURITY FENCE	---
NAVAID CRITICAL AREA	---

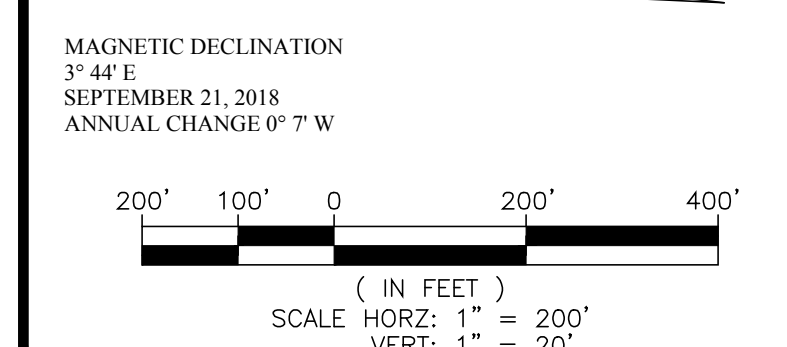
RUNWAY 17R PROFILE VIEW



DISCLAIMER:
 1. THE PREPARATION OF THIS DOCUMENT MAY HAVE BEEN SUPPORTED, IN PART, THROUGH A PLANNING GRANT FROM THE FEDERAL AVIATION ADMINISTRATION AS PROVIDED UNDER SECTION 306 OF THE AIRPORT AND AIRWAY IMPROVEMENT ACT OF 1982. THE CONTENTS DO NOT NECESSARILY REFLECT THE OFFICIAL VIEWS OR POLICY OF THE FAA. ACCEPTANCE OF THIS REPORT BY THE FAA DOES NOT IN ANY WAY CONSTITUTE AN ENDORSEMENT BY THE FEDERAL AVIATION ADMINISTRATION OF ANY DEVELOPMENT DESCRIBED THEREIN, NOR DOES IT INDICATE THAT THE PROPOSED DEVELOPMENT ENVIRONMENTALLY ACCEPTABLE WITH APPROPRIATE PUBLIC LAW ENFORCEMENT MEASURES. THE APPROVAL OF THIS REPORT DOES NOT GUARANTEE THE ACCURACY OF THE GENERAL LOCATION OF FUTURE FACILITIES, DEPENDING UPON THE PRELIMINARY DESIGN OF THE FACILITIES. THE APPROVAL OF THIS REPORT DOES NOT ADDRESS FINAL LOCATIONS, HEIGHTS, AND EXTERIOR FINISH OF ALL STRUCTURES. THE FAA'S CONCERN IS THE OBSTRUCTION OF OR INTERFERENCE WITH THE VISUAL ADVERSE IMPACT ON CONTROLLER VIEW OF AIRCRAFT APPROACHES AND GROUND MONUMENT AREAS WHICH COULD ADVERSELY AFFECT THE SAFETY, EFFICIENCY, OR UTILITY OF THE AIRPORT.



DRAFT



APPROVAL
 AUSTIN-BERGSTRÖM INTERNATIONAL AIRPORT
 CITY OF AUSTIN AVIATION DEPARTMENT
 JENNIFER WILLIAMS, PROJECT MANAGER DATE: _____

FAA ASS-ADO APPROVAL BLOCK:
 FEDERAL AVIATION ADMINISTRATION
 FORT WORTH AIRPORTS DISTRICT OFFICE
 CONDITIONALLY APPROVED: _____ MANAGER, ASS-ADO
 DATE: _____
 SUBJECT TO COMMENTS IN LETTER DATED: _____
 AIRSPACE STUDY NUMBER: _____

NO.	DATE	ISSUE	BY



RUNWAY 17R PROTECTION ZONE-PLAN AND PROFILE