

Rainey Mobility Study and Shared Streets Pilot

The Big Picture

2002

Great Streets Master Plan

Provides a vision and design guidelines to improve the quality of downtown streets and sidewalks, aiming to transform the public rights of way into great public spaces.

Sponsor



2010

Waller Creek District Master Plan

Creates a vision for a linear greenway and chain of parks along Waller Creek, from Waterloo Park to Lady Bird Lake, revitalizing the eastern side of Downtown.



2012

Imagine Austin Comprehensive Plan

The guiding document and plan for the City of Austin. Established the aspirational goals and community vision for Austin.



2017

Big Red Dog Mobility Study

Several Rainey neighborhood groups commissioned a private transportation and mobility study for the Rainey Neighborhood.



Downtown Austin Parking Study

The Downtown Austin Alliance initiated a private parking study to take an inventory of Austin's downtown parking assets and understand the level of parking demand to develop recommendations to improve downtown parking.



2018

Emma S. Barrientos Mexican American Cultural Center Master Plan

Establishes design recommendations to better meet the current and future needs of the center, guiding the expansion of the existing facility, and improving its relationship to the surrounding area.



Austin Strategic Direction 2023

City Council adopted a strategic direction, guiding the City of Austin for the next three to five years by establishing six measurable strategic outcomes to work toward Imagine Austin.



Austin Strategic Mobility Plan

Austin's new citywide transportation plan, which will guide how the City makes decisions that impact Austin's transportation future for the next 20 years.



Convention Center Study

City Council tasked the University of Texas at Austin Center for Sustainable Development to study and report on possibilities and considerations for expanding the Austin Convention Center. The report provided options for reimagining the facility and surrounding area.



2019

Palm District Master Plan Resolution

City Council adopted a resolution to bring disparate planning efforts for Palm School and Palm Park, Brush Square, the Emma S. Barrientos Mexican American Cultural Center, the Convention Center, Waller Creek, the Rainey Street Historic District, the Downtown Station and the Fifth Street Mexican American Heritage Corridor into a more comprehensive and coherent vision and blueprint for the entire area.



Rainey Mobility Study

Will provide recommendations on how different future mobility scenarios and associated infrastructure improvements can better manage traffic congestion and safety in the Rainey area.



We are here (August 2019)

Rainey "Shared Streets" Pilot Resolution

The Austin City Council adopted a resolution to launch a pilot.



Austin Core Transportation Plan

The update to the 2002 Downtown Austin Mobility Plan. It will guide multimodal transportation improvements to move people in, out, through, and within Downtown Austin. It is a key implementation tool for the Austin Strategic Mobility Plan.



Land Development Code Rewrite

The City of Austin is in the midst of updating its 30-year-old Land Development Code, which sets rules for what can be built where within city limits.



2020

Rainey Mobility Study and Shared Streets Pilot

Council Resolution

Austin City Council Resolution No. 20190619-86 (Rainey Shared Streets Pilot):

- City Council directed the City Manager to immediately initiate a shared streets pilot on Rainey Street in coordination with the Rainey Mobility Study
- The City Manager shall determine appropriate
 - Dates
 - Times
 - Duration of pilot
- The pilot should be created in consultation with
 - The Rainey Business Association
 - Area neighborhood associations
 - The Emma S. Barrientos Mexican American Cultural Center Board
- The pilot should include consideration of options for
 - Electric vehicle shuttles
 - Queueing areas for taxis and transportation network companies

Example

Sixth Street (Brazos to Red River Street)

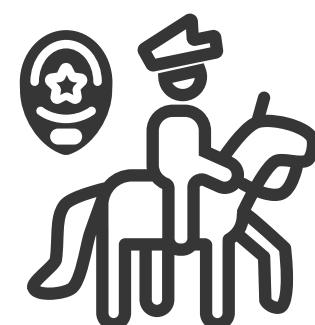
Regular Closure

Dates/Times

- Typically closed Thursdays – Saturdays, starts at 9 p.m.*

*Hours/days of closure may vary depending on holidays and special events

Who's Involved



Public Access



No vehicles

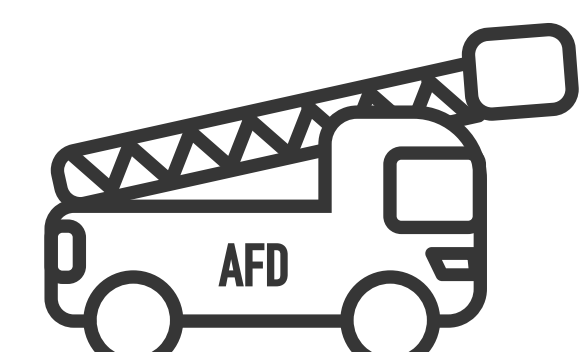


Walk your wheels



Pedestrians only

Emergency Access



Rainey Mobility Study and Shared Streets Pilot

Overview and Timeline

June 2019:
Study begins

June – August 2019:
Data collection

September 2019:
Study completed

Late fall 2019:
Launch shared
streets pilot

The Rainey Mobility Study:

- Will be used by City staff to implement near-term transportation-related improvements to manage mobility concerns in the area.
- Will help us to leverage public and private investments to make Rainey Street a better place for everyone.
- Is a sub-area study of the larger, Austin Core Transportation Plan that is currently expected to be complete in summer 2020.



Rainey Mobility Study and Shared Streets Pilot

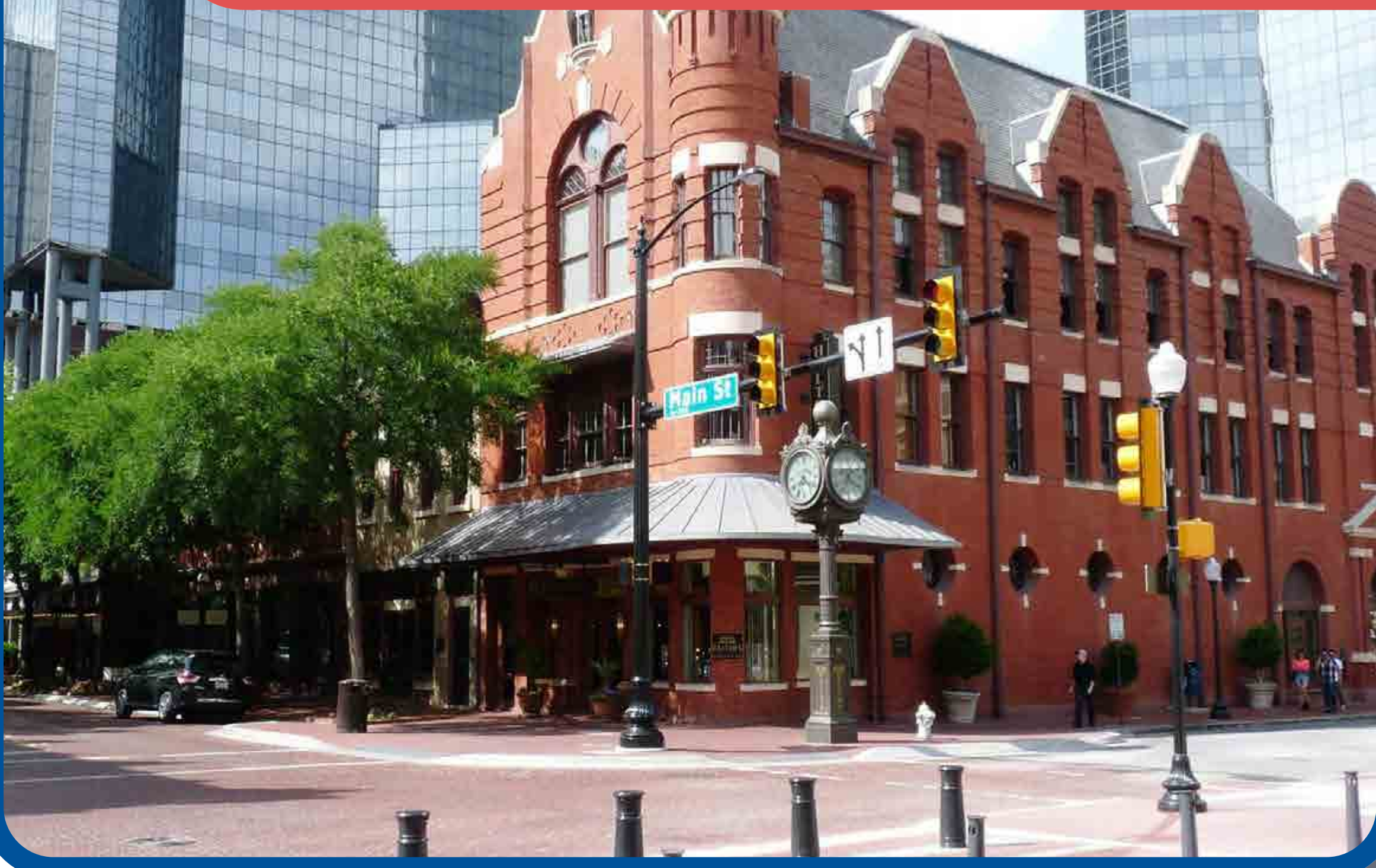
What is a Shared Street?

A shared street is a street that includes a shared zone where pedestrians, bicyclists, and motor vehicles mix in the same space.

- Encourages low motor vehicle speeds.
- Encourages low motor vehicle volume.
- Includes design elements that improve the pedestrian environment and the function of the street as a place for social, economic, and cultural exchange.
- More space for amenities such as tables, chairs, and benches, landscaping elements, bicycle parking, and art.



Broadway, New York NY



Main Street, Fort Worth TX



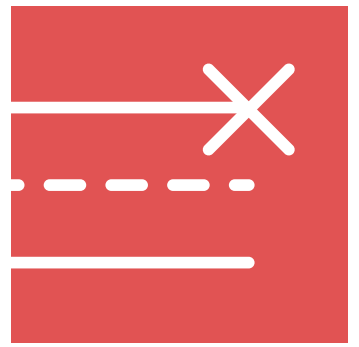
Palmer Street, Cambridge MA

Rainey Mobility Study and Shared Streets Pilot

What We're Hearing



Lack of transit to and from Rainey



Few access points



Maintain emergency access



Bustling nightlife presents mobility challenges



Mix of transportation modes in the street



Need for pedestrian, bicycle, and scooter accommodations

What We Need to Hear From Businesses

- How do employees and customers get to and from Rainey?
- Where do employees park?
- Does your business have vehicular access to a back alley?
- When and where does your business receive deliveries?
- How does your business handle trash pickup?
- What days and times do you support closing Rainey Street to vehicular traffic?

TAKE THE SURVEY!
[SurveyMonkey.com/r/RaineyBizSurvey](https://www.surveymonkey.com/r/RaineyBizSurvey)