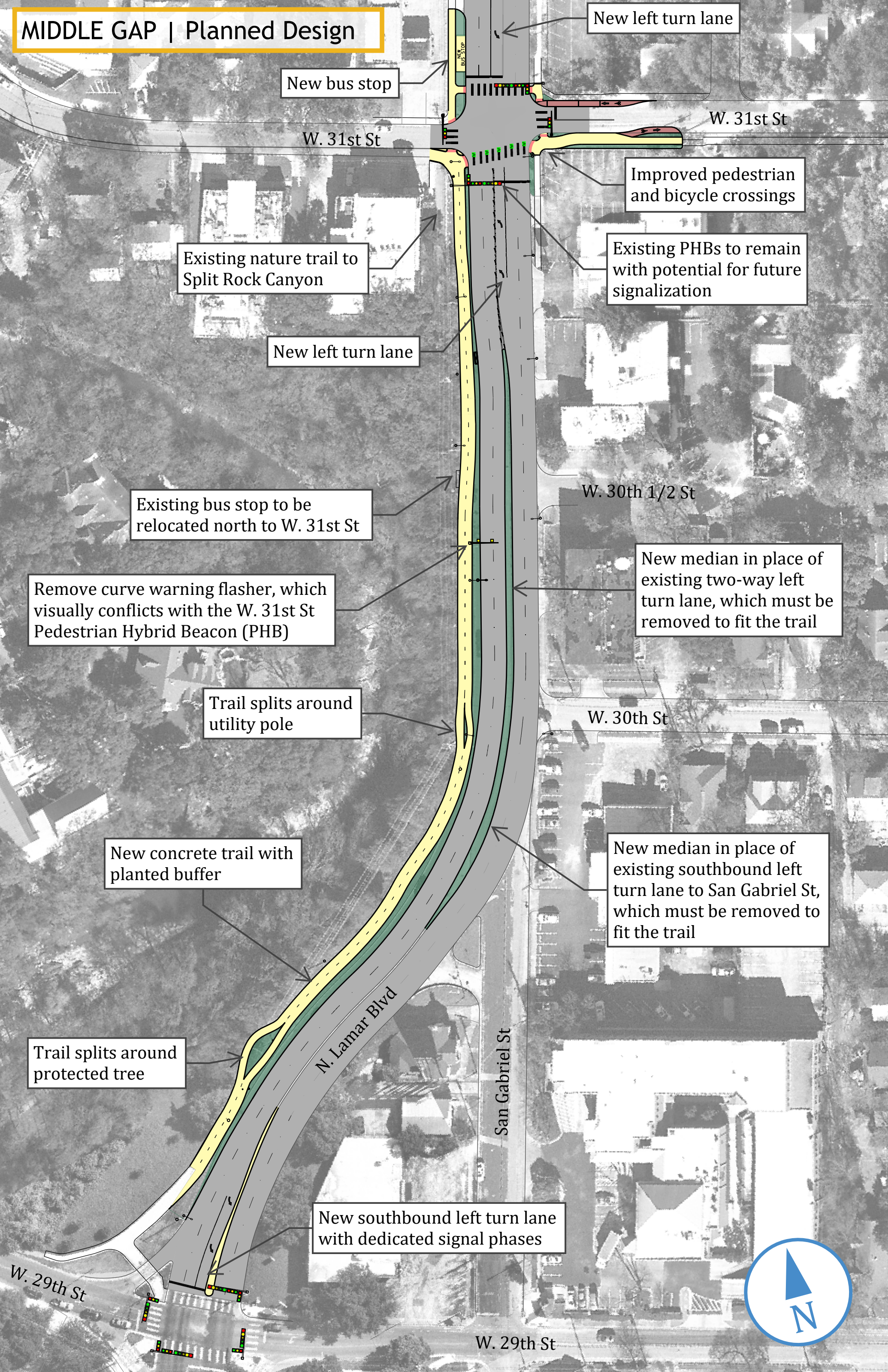


MIDDLE GAP | Planned Design



New bus stop

New left turn lane

W. 31st St

W. 31st St

Improved pedestrian and bicycle crossings

Existing nature trail to Split Rock Canyon

Existing PHBs to remain with potential for future signaling

New left turn lane

W. 30th 1/2 St

Existing bus stop to be relocated north to W. 31st St

New median in place of existing two-way left turn lane, which must be removed to fit the trail

Remove curve warning flasher, which visually conflicts with the W. 31st St Pedestrian Hybrid Beacon (PHB)

Trail splits around utility pole

W. 30th St

New concrete trail with planted buffer

New median in place of existing southbound left turn lane to San Gabriel St, which must be removed to fit the trail

Trail splits around protected tree

N. Lamar Blvd

San Gabriel St

New southbound left turn lane with dedicated signal phases

W. 29th St

W. 29th St

