

# South Lamar Boulevard

Riverside Drive to Ben White Boulevard/US 290 West

## MOBILITY, SAFETY, AND CONNECTIVITY IMPROVEMENTS

The list below is what is planned for the South Lamar Boulevard corridor using 2016 Mobility Bond funds. The City will design and construct improvements that will enhance mobility, safety, and connectivity from Riverside Drive to Ben White Boulevard/US 290 West, with Enhanced Multimodal Improvements between Riverside Drive and Barton Springs Road. Additionally, design work will begin on multimodal enhancements between Panther Trail and US 290 for potential future construction. This includes elements like full street reconstruction to extend the life of the roadway; bike lanes that are protected from vehicular traffic; intermittent median islands for safety; and streetscape enhancements. This document was updated to reflect City Council action on April 26, 2018.

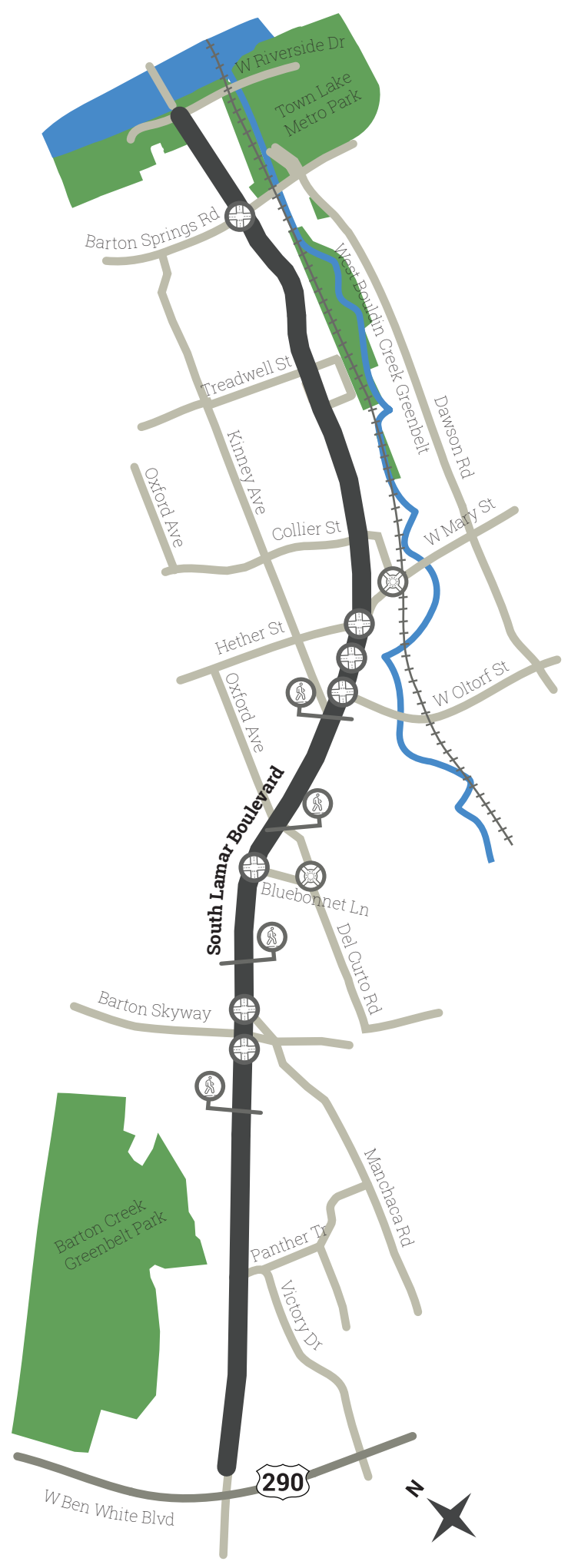
### Design and Construction

- Up to 15 traffic signal improvements with enhanced technology to promote vehicular and transit efficiency, and pedestrian and bicyclist safety
- Intersection improvements with turn lane modifications to enhance vehicular and transit efficiency, and pedestrian and bicyclist safety at:

  1. Barton Springs Rd
  2. Hether St
  3. Oltorf St
  4. Mary St
  5. Bluebonnet Ln
  6. Barton Skyway
  7. Manchaca Rd
- Up to 3 miles of pavement rehabilitation to repair spot damage, restore surface, and improve rideability
- New roundabouts to increase safety and improve traffic at intersections:

  - Mary St/Evergreen Ave
  - Bluebonnet Ln/Del Curto Rd
- New bicyclist and pedestrian railroad crossing at Treadwell St to provide a safer connection to West Bouldin Creek Greenbelt
- Up to 6 miles of new or rehabilitated sidewalks and shared-use paths to create continuous ADA-compliant sidewalks along length of corridor
- Enhanced multimodal improvements for South Lamar, Riverside to Barton Springs Road, for Full Design & Construction, including up to 0.5 miles of full reconstruction with enhanced pedestrian and bicycle facilities, streetscape, trees, medians, street lighting and new drainage system for Riverside Drive to Barton Springs Road.\*

*\*Funding for additional enhanced multimodal improvements for South Lamar to come from the South Lamar Corridor-wide funding as well as a portion from Slaughter Lane Corridor-wide Mobility Improvement Package (western portion), by refining estimates after Preliminary Engineering and potential cost reductions via reallocations or scope reduction as necessary.*



- New transit operational enhancements at:

    1. Manchaca Rd
    2. Lightsey Rd
    3. Bluebonnet Ln
    4. Oltorf St
    5. Barton Springs Rd
  - Intermittent median islands at various locations to improve vehicular and transit efficiency, and safety for all users
  - On-corridor stormwater drainage upgrades from Oxford Ave to Panther Tr to support mobility improvements
  - Up to 6 miles of new or improved dedicated bicycle lanes to enhance safety and mobility for bicyclists and drivers
  - Evaluation and possible construction of new midblock pedestrian crosswalk signals (Pedestrian Hybrid Beacons) for cyclists and pedestrians in the vicinity of:

    1. West Oak Dr
    2. Dickson Dr
    3. Oxford Ave/Kinney Ave
    4. Post Apartments
- A single improvement may benefit multiple transportation modes.
- Vehicular    ● Bicycle  
● Pedestrian    ● Transit  
 Corridor Limits

### Design and Possible Construction

- The City will begin design on the following projects for possible construction with 2016 Mobility Bond funding. Other funding sources and partnerships will be sought.
- Up to half a mile of full street reconstruction between Panther Tr and US 290:
    - Wider sidewalks
    - Protected bicycle lanes
    - Enhanced streetscapes with elements like banners, aesthetic treatments, hardscaping, landscaping, trees, etc
    - Street lighting
    - On-corridor stormwater drainage upgrades

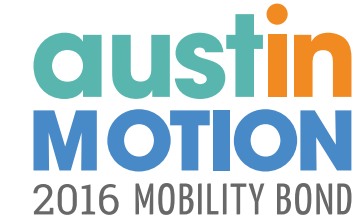
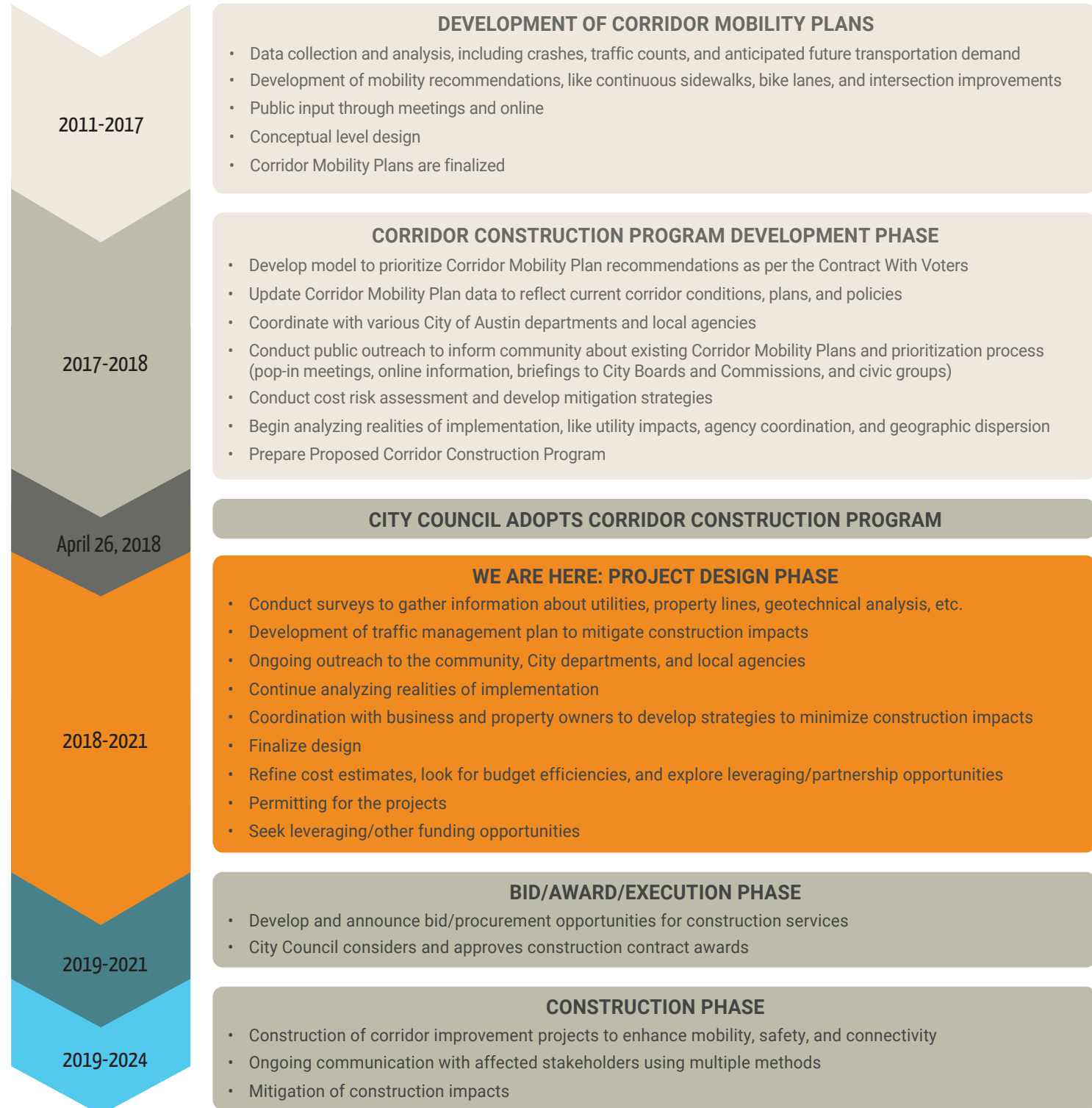
NOTE: All recommendations are approximate, proposed, and subject to change. The exact locations of improvements will be determined in the project design phase and the City will work with the community prior to project construction.

For more information and a complete list of improvements, visit [AustinTexas.gov/CorridorMobility](http://AustinTexas.gov/CorridorMobility)

# South Lamar Boulevard

Riverside Drive to Ben White Boulevard/  
 US 290 West

## Program Phases



**CORRIDOR MOBILITY PROGRAM**



In April 2018, Austin City Council adopted a Corridor Construction Program funded by the 2016 Mobility Bond. The Corridor Construction Program includes improvements for mobility, safety, and connectivity improvements on South Lamar Boulevard between West Riverside Drive and West Ben White Boulevard as well as improvements on eight other corridors. Corridors are primary roadways in Austin's transportation network.

The improvements are based on the South Lamar Corridor Mobility Plan, which was developed with the help of the community. The Corridor Mobility Plan is available at [AustinTexas.gov/SouthLamar](http://AustinTexas.gov/SouthLamar).

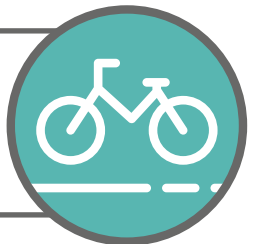
The projects in the Corridor Construction Program that have been prioritized for design and construction with 2016 Mobility Bond funds will result in the biggest bang for the buck and meet other goals outlined in City Council's Contract With Voters.

Here's what you'll get:



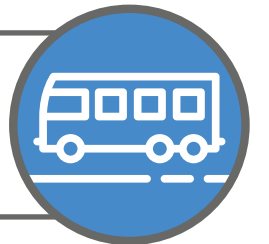
Better traffic flow and reduced delay through intersection improvements, upgraded traffic signals, pavement rehabilitation, and intermittent median islands for safety.

Continuous bicycle lanes or shared-use paths along the full length of the corridor to improve safety and traffic flow.



Continuous ADA-compliant sidewalks along the full length of the corridor, with additional mid-block signalized pedestrian crossings.

Better traffic flow, reduced delay and enhanced connectivity through transit signal priority, and coordination with Capital Metro on strategic placement of transit stops.



The timing and delivery of improvements may be modified during Corridor Construction Program implementation, as a variety of factors are being considered, such as leveraging opportunities, utility conflicts, and scheduling or construction risks. This is to ensure taxpayer dollars are used wisely and in a manner that achieves the desired outcomes expressed in the Contract With Voters.

All recommendations are at a conceptual/preliminary level. Additional project development, including design work, is currently underway. The City is working with the community as well as property and business owners who may be affected. If you have questions about the Corridor Construction Program, contact Sara Behunek at [corridors@austintexas.gov](mailto:corridors@austintexas.gov) and (512) 974-7840.