



# RED LINE TRAIL PUBLIC MEETING

February 21, 2019



# RED LINE TRAIL PUBLIC MEETING

Preliminary Engineering Report Public Outreach



# AGENDA

- Introduction of Project Team
- Introduction to Urban Trails
- Project Summary
- Evaluation Criteria/ Preliminary Engineering Report
- Public Input - Questions



# PROJECT TEAM

- City Project Sponsor – Janae Spence, PWD
- City Project Manager – Craig McColloch, PWD – PMD
- Project Coordinator – Ana Seivert, PWD
- Public Information Officer – PWD Public Affairs Office:
  - Carolynn Calabrese
  - Matt Hart
- Project Consultant – COA Engineering Services Division:
  - Christopher Newton – Project Engineer
  - Kimberly Gilbertson – Landscape Architect Associate
  - Darren Sluyter – Project Designer



# URBAN TRAIL GOALS

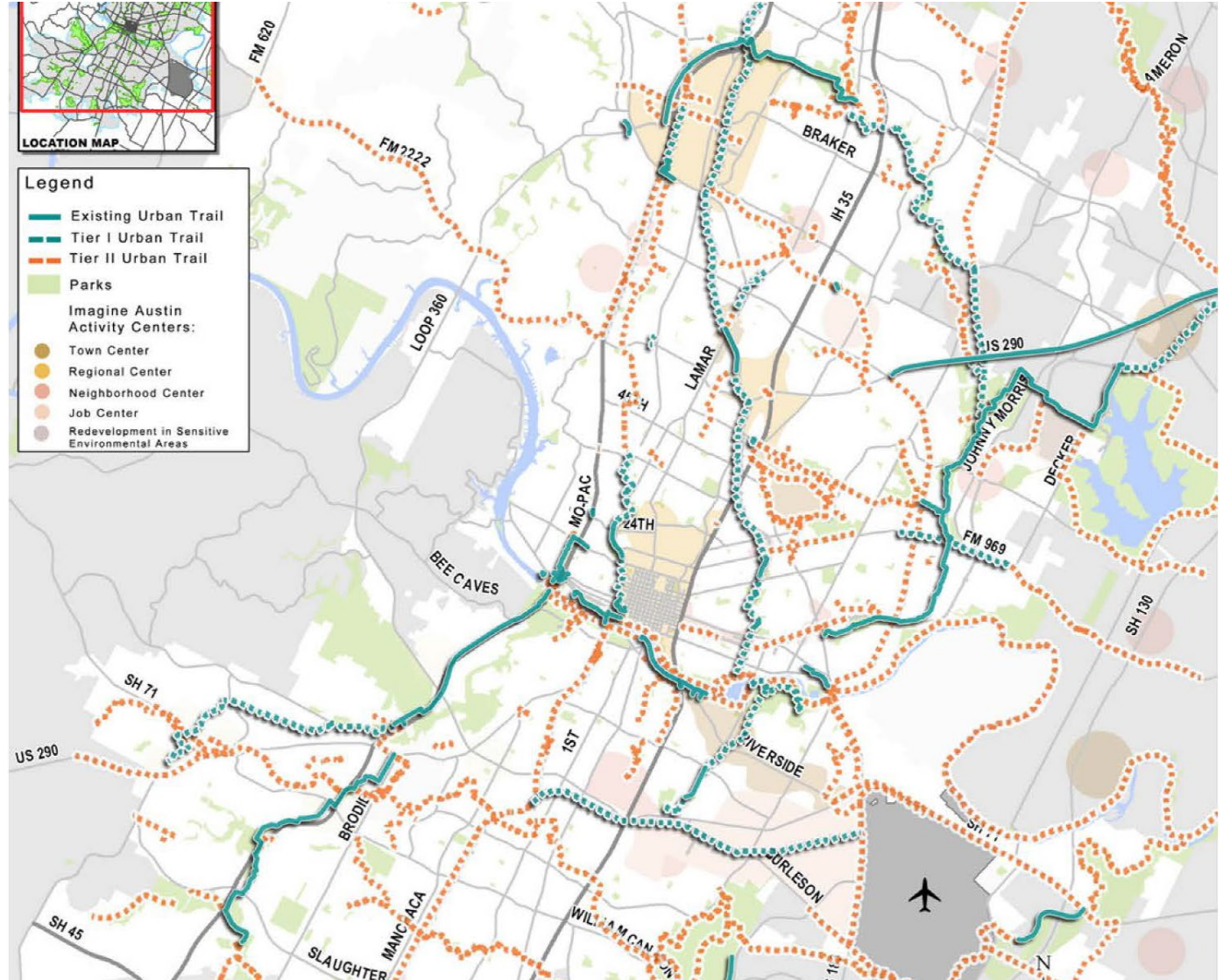
1. Easy **access** to transportation + recreation users from all parts of the City.
2. **Connect** to on-street bicycle + sidewalk networks.
3. **Adequate width** to accommodate transportation + recreation users.
4. Include **trail amenities/features** that create unique greenways.
5. **Adequate funding** and resources to **maintain** + **operate**.
6. **Context-sensitive, environmentally sustainable, preservation + improvement upon wildlife** habitat.





# URBAN TRAIL PLAN

- Completed October 2014
- 47 Miles- Tier 1
- 360 Miles – Tier 2





# PROJECT SUMMARY



# PROJECT TIMELINE

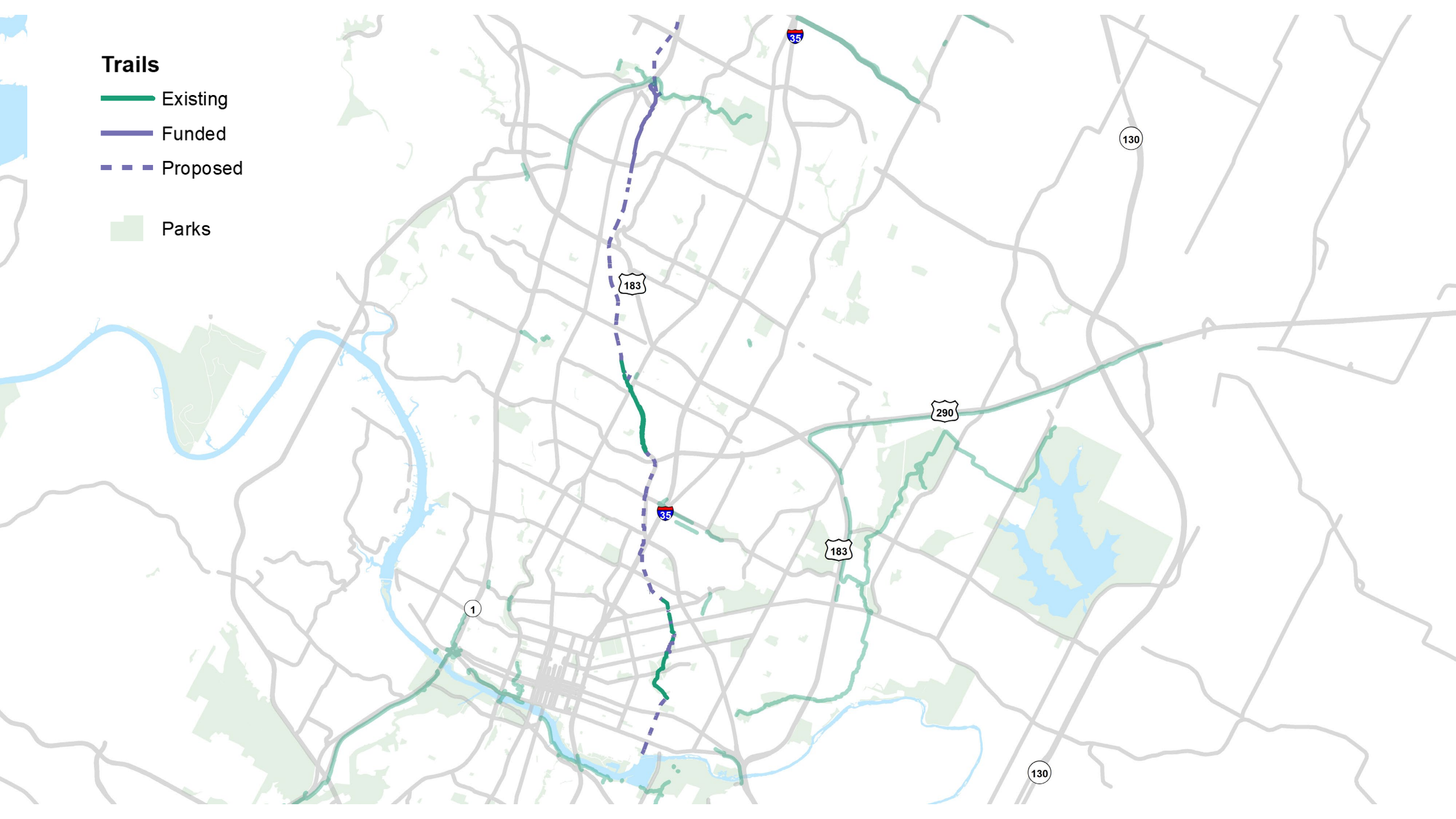
Project Funded by 2016 Mobility Bond Program





## Trails

- Existing
- Funded
- Proposed
- Parks

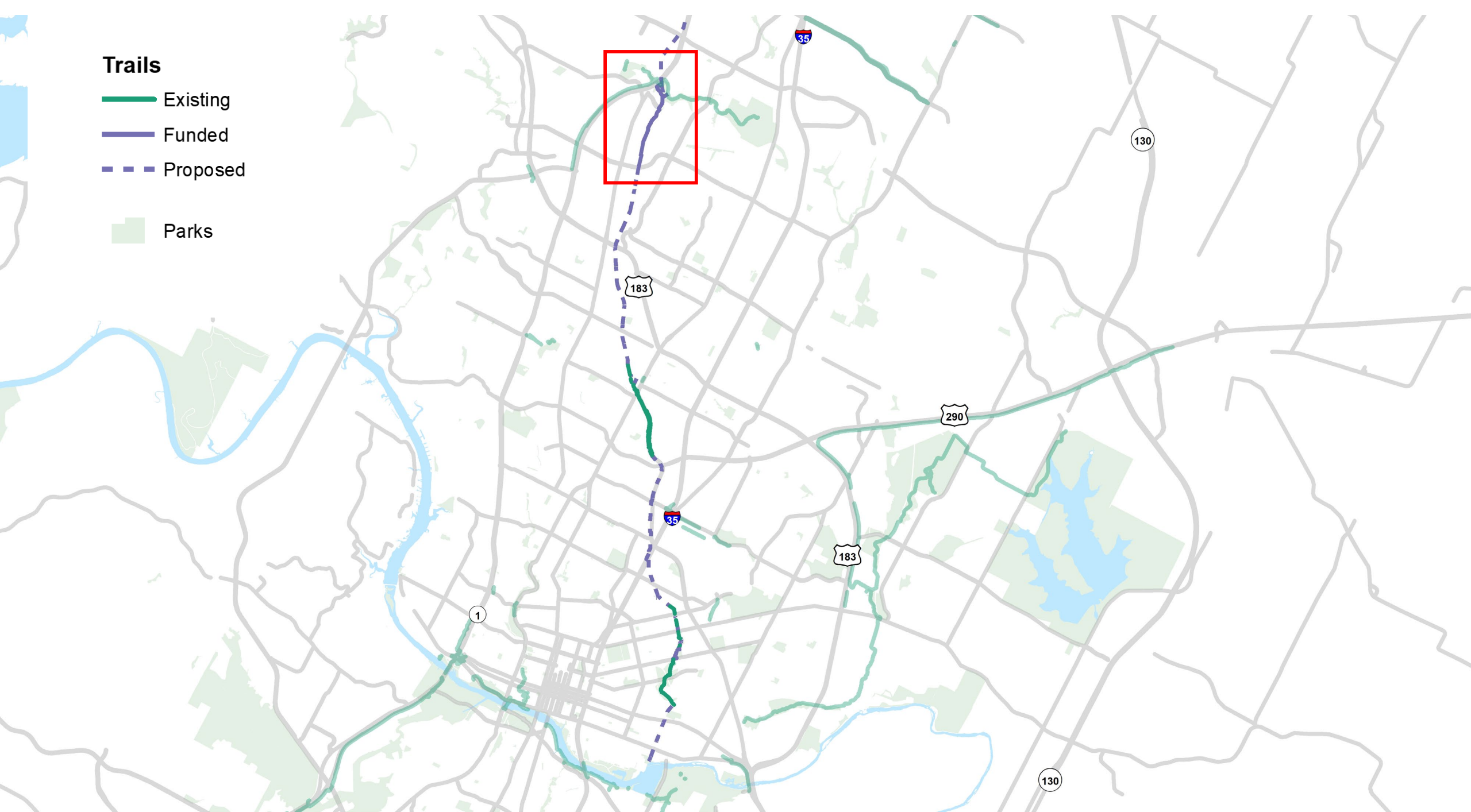




## Trails

- Existing
- Funded
- Proposed

Parks

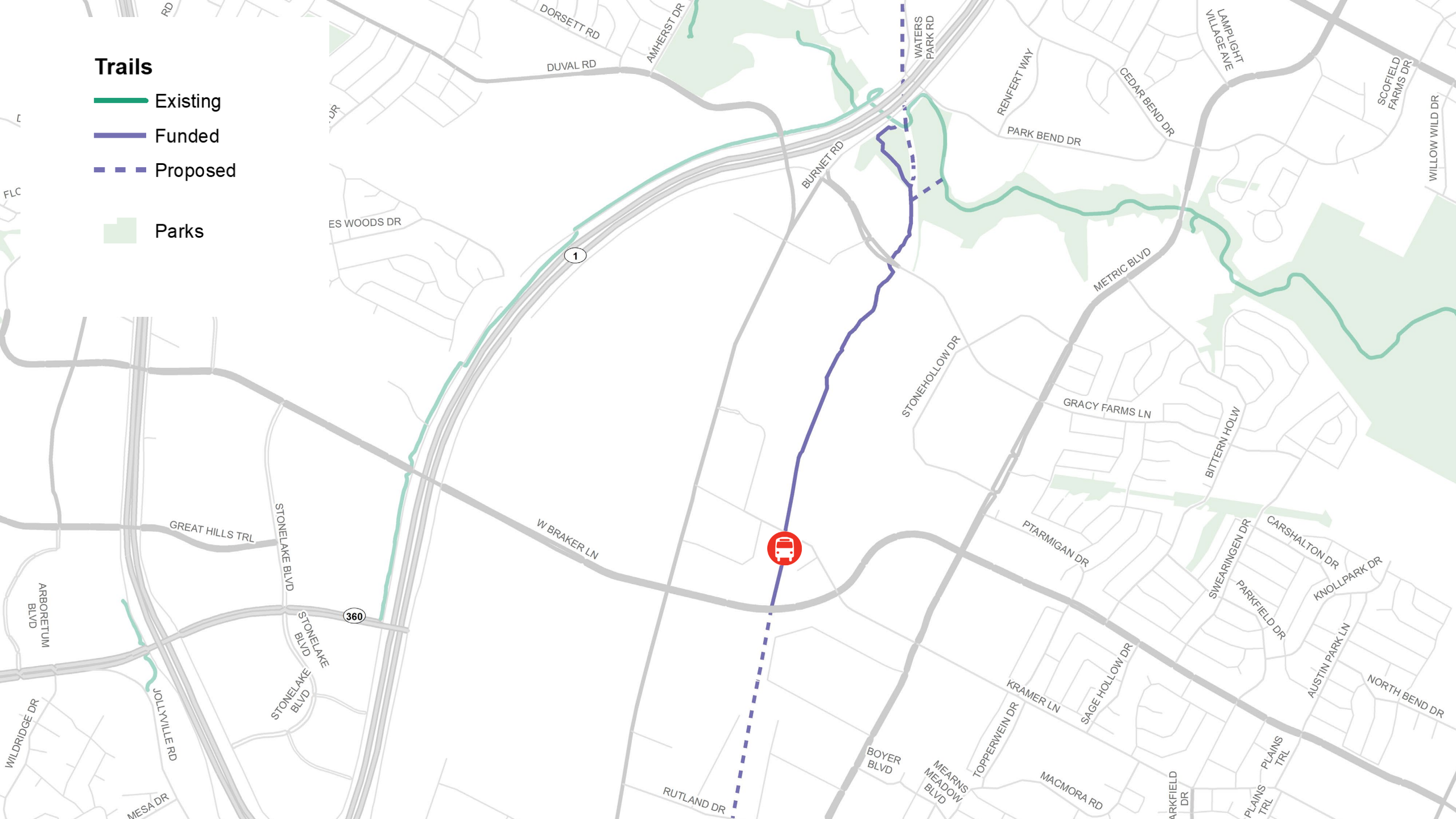




**Trails**

- Existing
- Funded
- Proposed

Parks





# TRAIL FEATURES

- 15 ft. concrete trail
- 1.67 miles (8800 ft.)
- 10 ft. of two-directional bike lane
- 5 ft. shared pedestrian path
- ADA accessible
- Lighting elements



# EVALUATION FACTORS

- Public feedback
- Cultural Assessment
- Community Impact
- Cost
- Topography, Accessibility
- Tree Canopy Impacts
- Connectivity
- Location of Utilities
- Property Ownership
- Surrounding Land Use
- Floodplain/Drainage
- Environmental
- Erosion Hazard Zone
- Wildlife Habitat



# Roadway crossings





# Roadway crossings





# Creek crossings and elevation changes





# Space Constraints

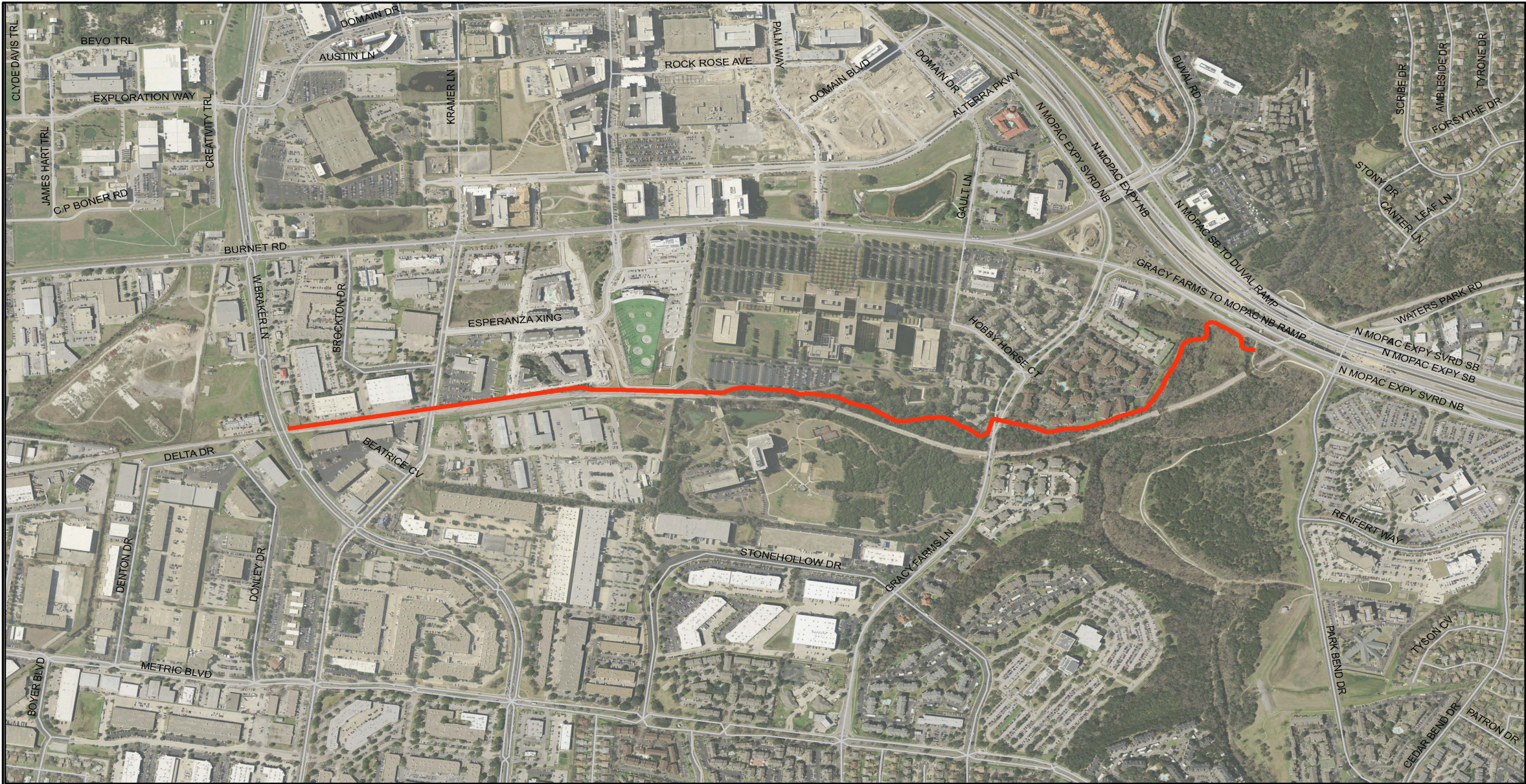




# Possible Capital Metro expansion

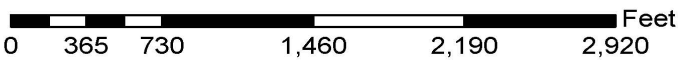






**Legend**

-  Recommended Route
-  TRANSPORTATION.street\_segment



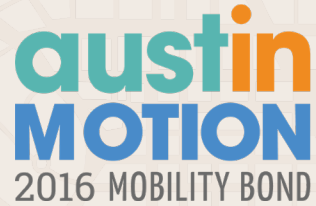
CITY OF AUSTIN, TEXAS  
DEPARTMENT OF PUBLIC WORKS  
ENGINEERING SERVICES DIVISION

RED LINE TRAIL

OVERALL TRAIL CORRIDOR







2/21/2019

## Contacts

Ana Seivert - project coordinator

[ana.seivert@austintexas.gov](mailto:ana.seivert@austintexas.gov)

(512) 974-2858

Carolynn Calabrese - public information

[carolynn.calabrese@austintexas.gov](mailto:carolynn.calabrese@austintexas.gov)

(512) 974-6512

## Website

AustinTexas.gov/RedLineTrail