



NORTHERN WALNUT CREEK TRAIL SECTION 3

(IH-35 TO SOUTHERN WALNUT CREEK)

PUBLIC MEETING

September 17, 2019

NORTHERN WALNUT CREEK TRAIL SECTION 3

(IH-35 TO SOUTHERN WALNUT CREEK)

PUBLIC MEETING

Preliminary Engineering Report Public Outreach

SEPT. 17, 2019



AGENDA

- About the Urban Trails Program
- NWCT Section 3 Project Team
- Project Summary
- Preliminary Engineering Report
- Evaluation Criteria
- Public Input & Question – Open House Format



URBAN TRAIL GOALS

austin
MOTION
2016 MOBILITY BOND



1. Easy **access** to transportation + recreation users from all parts of the City
2. **Connect** to on-street bicycle + sidewalk networks
3. **Adequate width** to accommodate transportation + recreation users
4. Include **trail amenities/features** that create unique greenways
5. **Adequate funding** and resources to **maintain + operate**
6. **Context-sensitive, environmentally sustainable, preservation + improvement** upon wildlife habitat



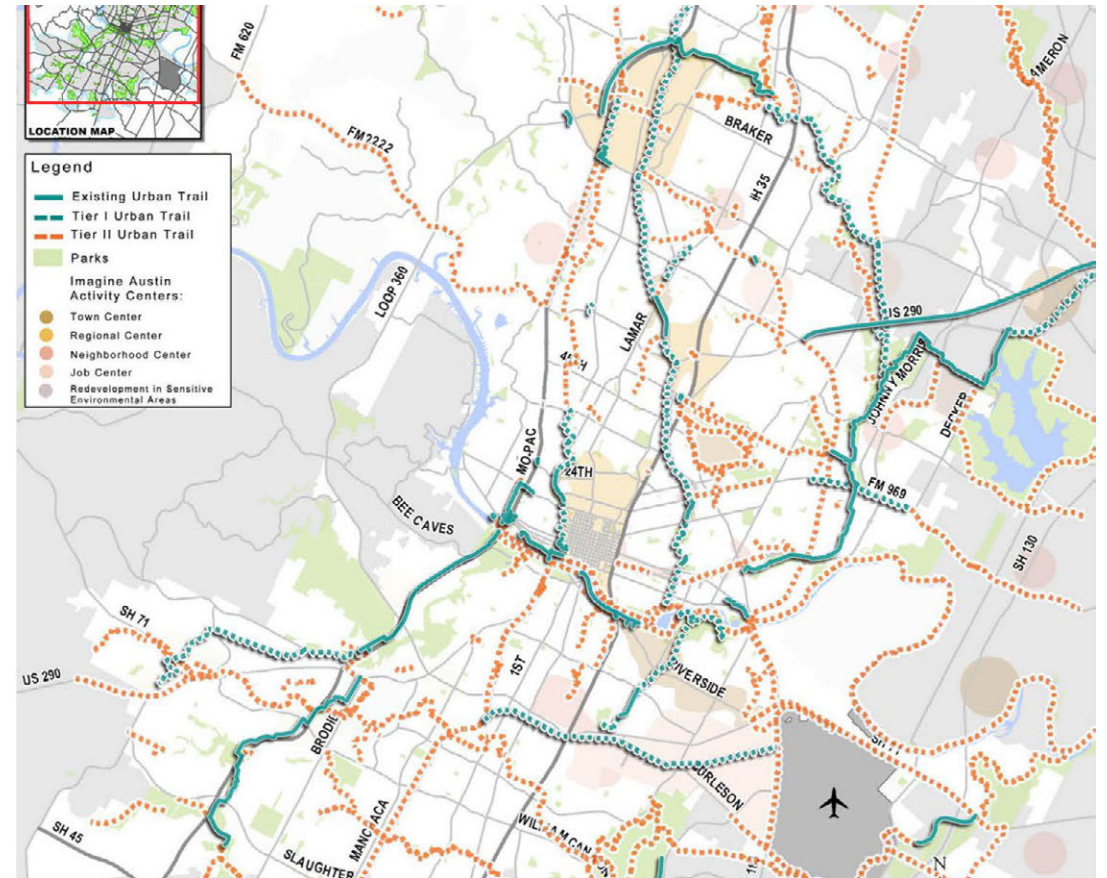


URBAN TRAILS PLAN

austin
MOTION
2016 MOBILITY BOND



- Completed October 2014
- Proposed Tier 1 Trails:
47 Miles
- Proposed Tier 2 Trails:
360 Miles



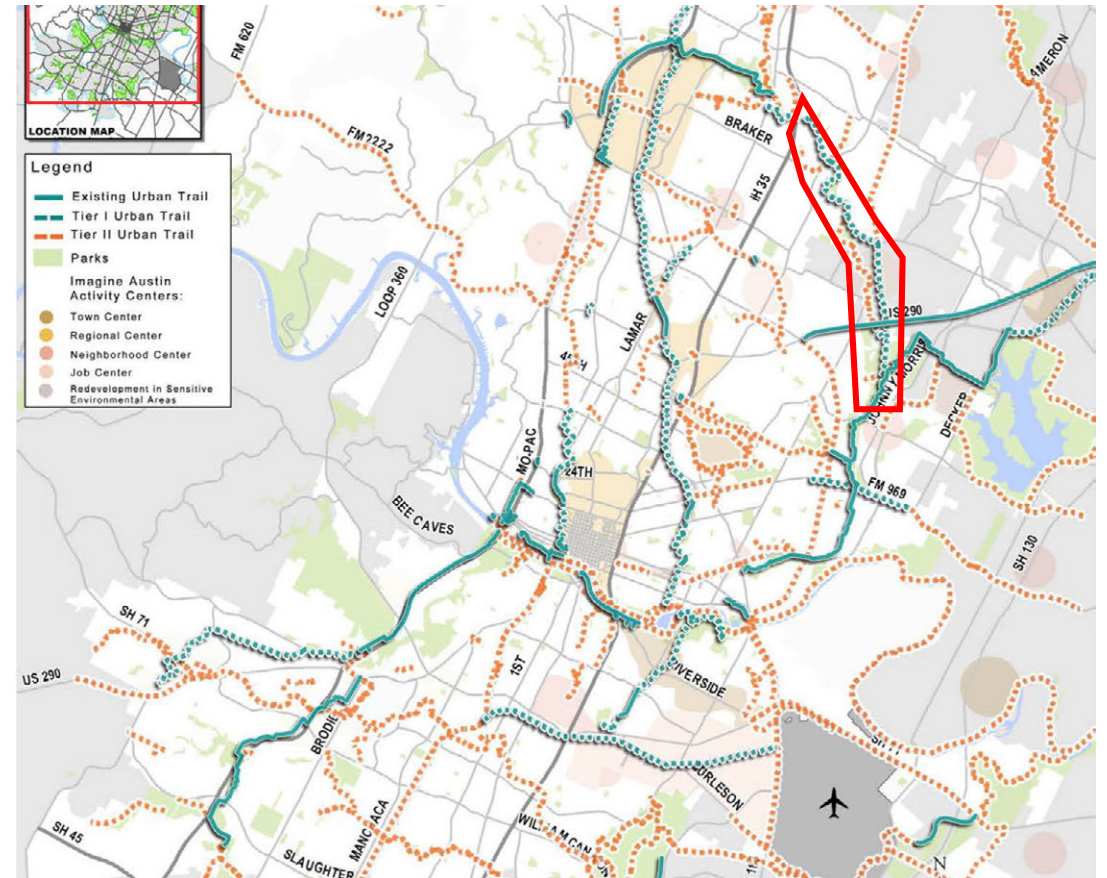


URBAN TRAILS PLAN

austin
MOTION
2016 MOBILITY BOND



- Completed October 2014
- Proposed Tier 1 Trails:
47 Miles
- Proposed Tier 2 Trails:
360 Miles

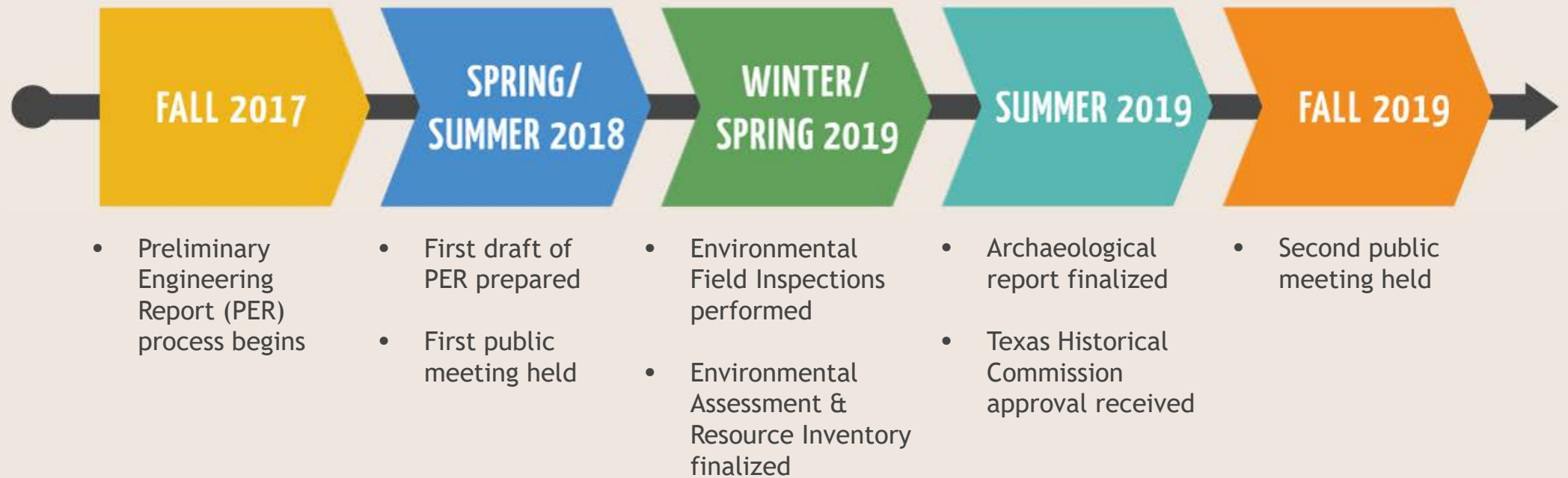


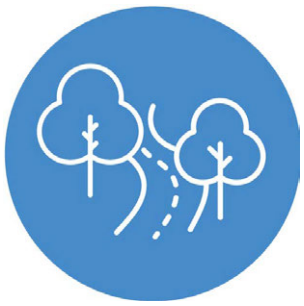
PROJECT SUMMARY



PROJECT TIMELINE

- Funded by 2016 Mobility Bond





CITY OF AUSTIN PROJECT TEAM



- **Sponsor Department:** Austin Public Works (Urban Trails Program)
- **Project Manager:** Dario Octaviano, Austin Public Works
- **Project Coordinator:** Ana Seivert, Austin Public Works
- **Public Information Officer:** Carolynn Calabrese, Austin Public Works
- **Project Engineer:** Chris Evans, COA Engineering Services Division Project Engineer



TRAIL FEATURES

- Connects to existing and proposed trails
 - Proposed Trail: NWCT Section 2 (Walnut Creek Metropolitan Park to IH-35)
 - Existing Trail: Southern Walnut Creek Trail
 - Existing Trail: 290 Shared Use Path
 - Existing Trail: Austin to Manor Trail
- 12 ft. concrete trail
- 8 miles
- ADA accessible





EVALUATION FACTORS

- Public feedback
- Cultural Assessment
- Community Impact
- Cost
- Topography, Accessibility
- Tree Canopy Impacts
- Connectivity
- Location of Utilities
- Property Ownership
- Surrounding Land Use
- Floodplain/Drainage
- Environmental
- Erosion Hazard Zone
- Wildlife Habitat

Existing Austin Energy Easements



Existing Missouri-Kansas Easement



Environmental Features: Rimrock



Environmental Features: Wetlands



IH-35 Crossing





UPCOMING EVENTS

Public Meeting:

Northern Walnut Creek Trail Section 2

(Walnut Creek Metropolitan Park to IH-35)

- **WHEN:** Tues., October 8th, 2019, 6-7:30 pm
- **WHERE:** Walnut Creek Elementary



THANK YOU

Contacts

Ana Seivert, Project Coordinator

Ana.Seivert@austintexas.gov | (512) 974-2858

Carolynn Calabrese, Public Information Specialist

Carolynn.Calabrese@austintexas.gov | (512) 974-6512

Website

[AustinTexas.gov/WalnutCreekTrail](https://austintexas.gov/WalnutCreekTrail)