

PROJECT OVERVIEW

Northern Walnut Creek Trail Section 3 is one of two 2016 Mobility Bond projects within the Walnut Creek Trail System.

This approximately 8-mile section will be located between IH-35 to Southern Walnut Creek Trail, connecting east and northwest portions of our trails network.

Walnut Creek Trail System Map

Legend

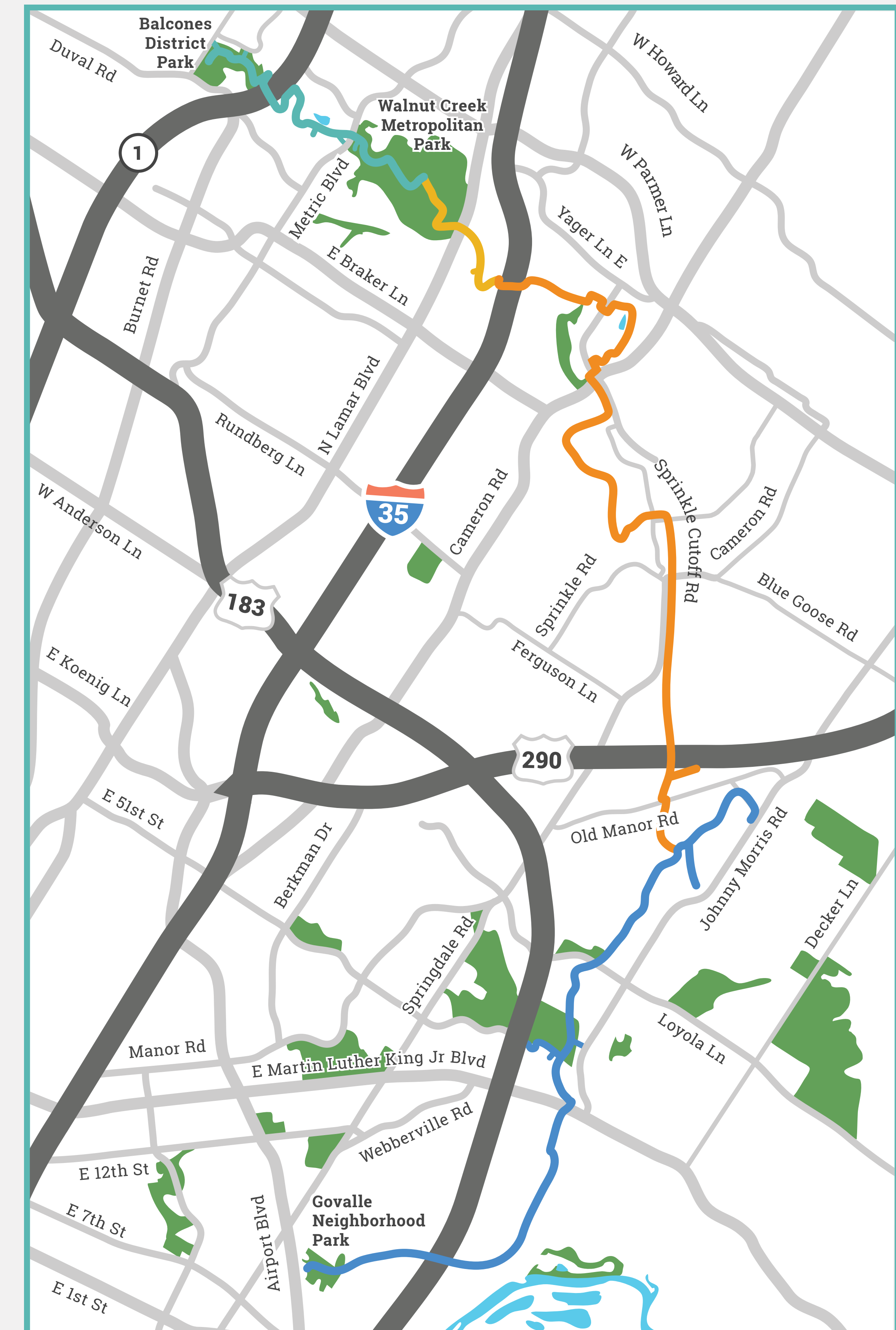
Southern Walnut Creek Trail
(Govalle Park to Daffan Lane)

Northern Walnut Creek Trail Section 1
(Balcones District Park to Walnut Creek Metropolitan Park)

Northern Walnut Creek Trail Section 2
(Walnut Creek Metropolitan Park to IH-35)

Northern Walnut Creek Trail Section 3
(IH-35 to Southern Walnut Creek Trail)

Project Website: [AustinTexas.gov/WalnutCreekTrail](https://austintexas.gov/WalnutCreekTrail)

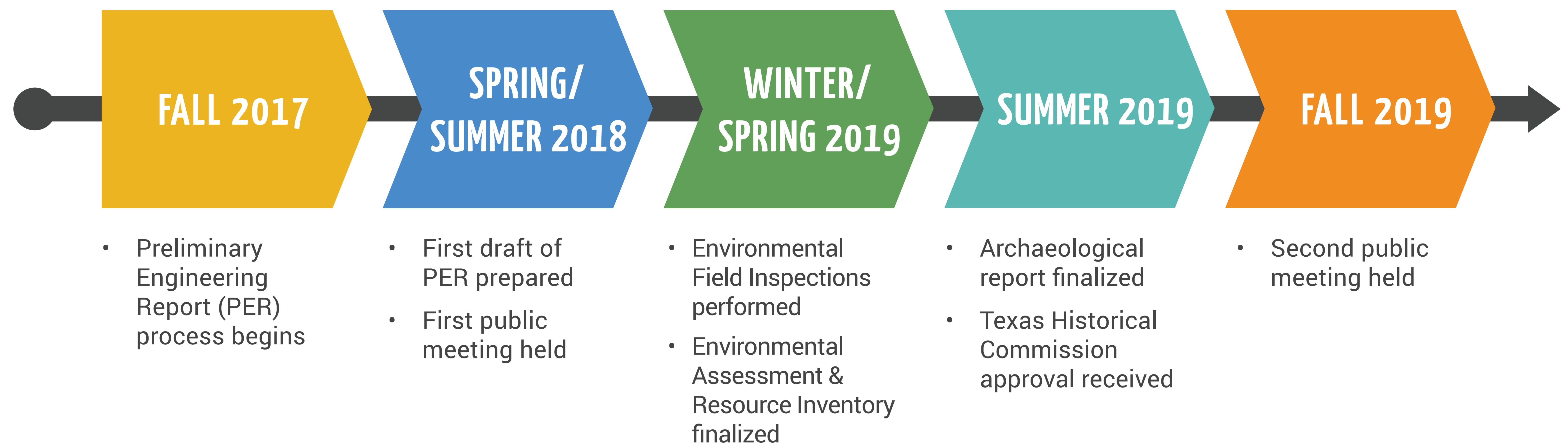


PROJECT BACKGROUND

Project Overview

- City staff are developing a Preliminary Engineering Report to identify a recommended route and project considerations like environmental concerns, wildlife, nearby property ownership and more
- No design or construction funds are currently allocated for this project, but having a plan ready allows the City to move forward quickly, if funding is identified
- Staff are working to identify funding opportunities for continued development of this project

Project Timeline



PROJECT BACKGROUND

Existing Conditions & Considerations



- Existing MoKan easements



- Existing Austin Energy easements



- IH-35 crossing



- Environmental concern: rimrock



- Environmental concern: rimrock



- Existing wetlands

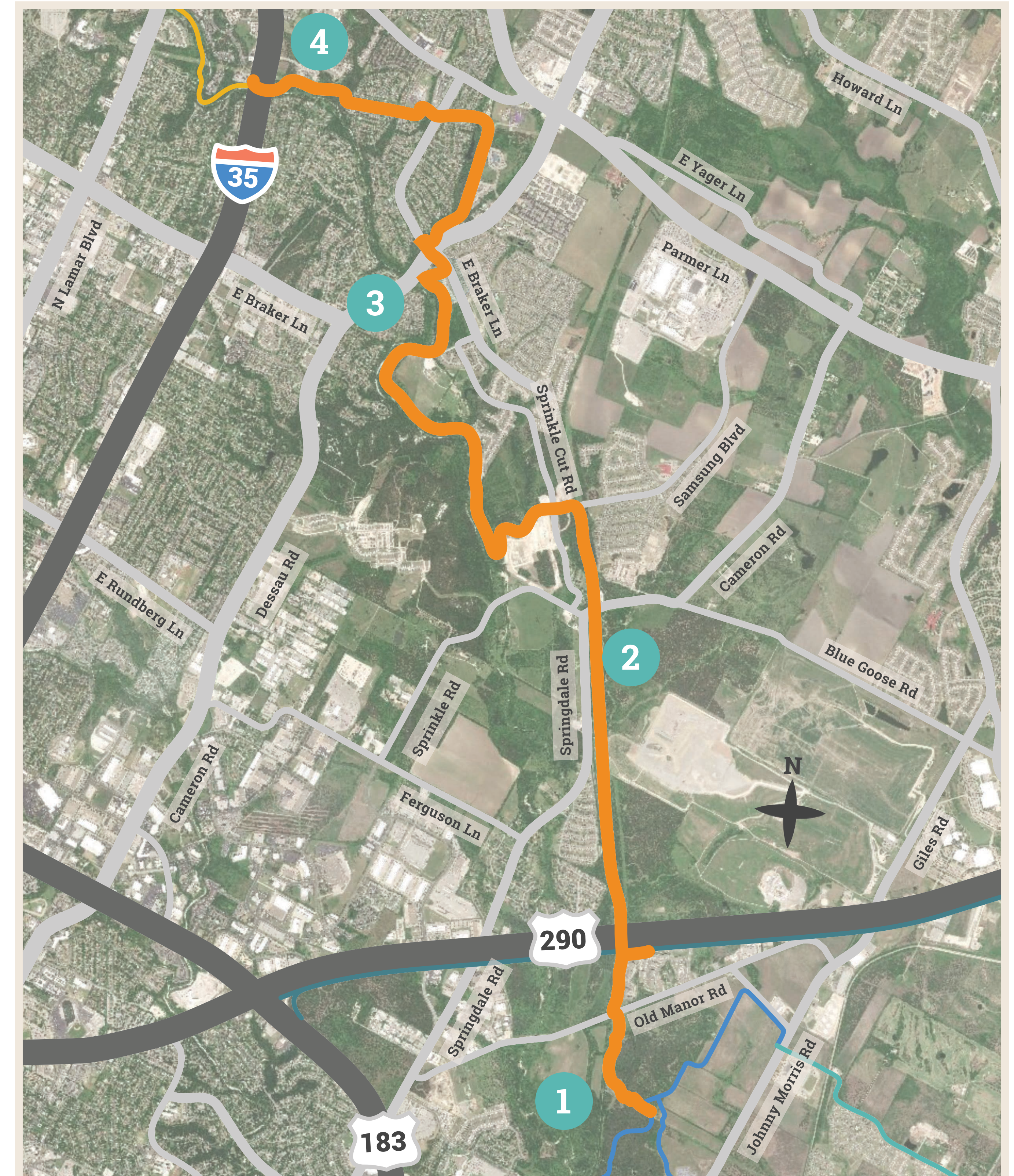
RECOMMENDATIONS

Trail Features:

- 8-mile concrete trail
- 12 ft. wide
- ADA accessible

Trail Segments

- **Segment 1:** Southern Walnut Creek Trail to US 290
- **Segment 2:** US 290 to Sprinkle/Cameron Rds
- **Segment 3:** Sprinkle/Cameron Rds to Dessau Rd
- **Segment 4:** Dessau Rd to IH-35



Legend

Preferred Route

Connecting Project: NWCT Section 2

Existing Trail: Southern Walnut Creek Trail

Existing Trail: 290 Shared Use Path

Existing Trail: Austin to Manor Trail

SEGMENT 1

Southern Walnut Creek Trail to US 290



Legend

Preferred Route



Non-preferred Alternative Route



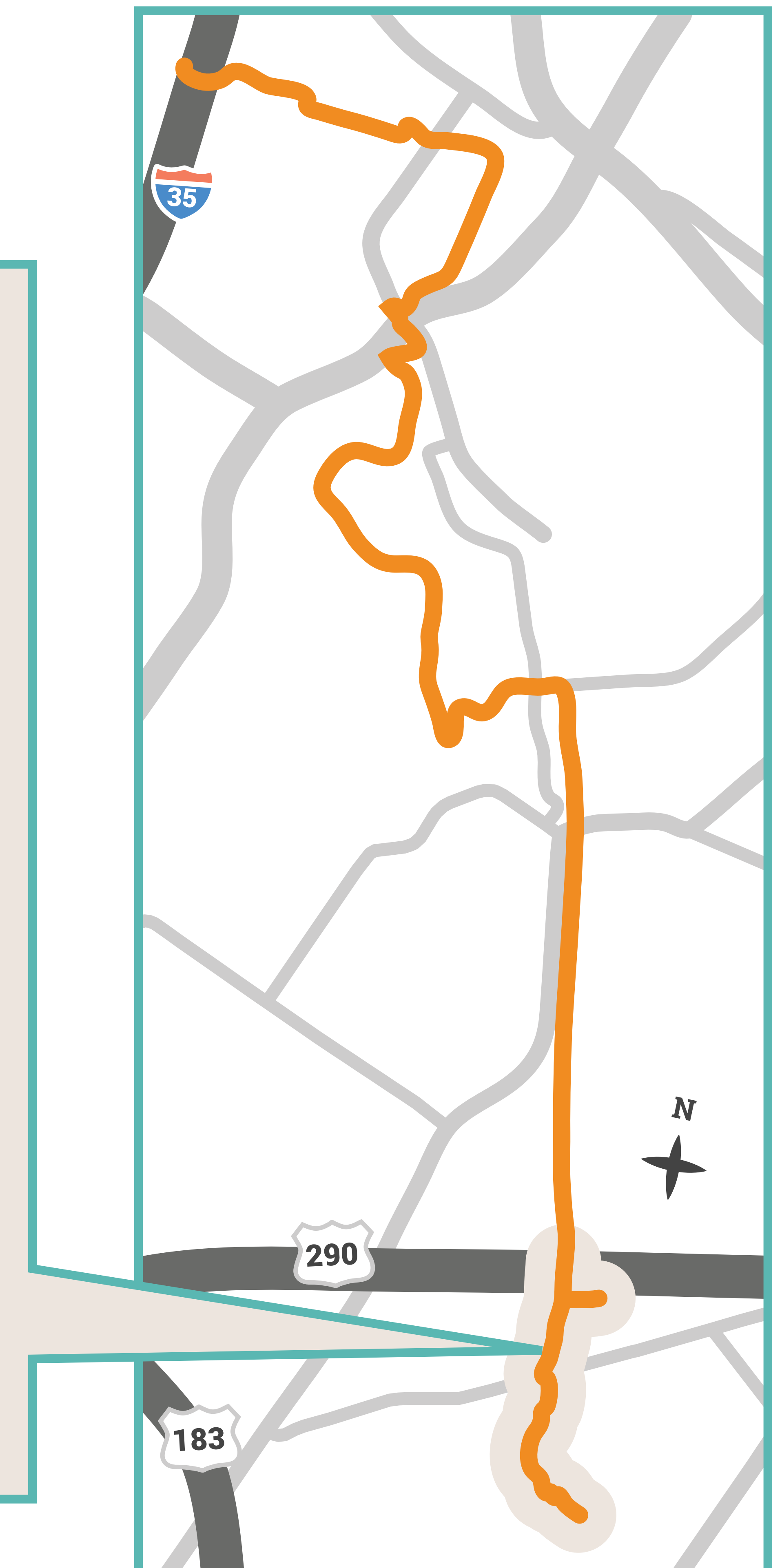
Existing Trail: Southern Walnut Creek Trail



Existing Trail: 290 Shared Use Path



Existing Trail: Austin to Manor Trail



SEGMENT 2

US 290 to Sprinkle/Cameron Rds

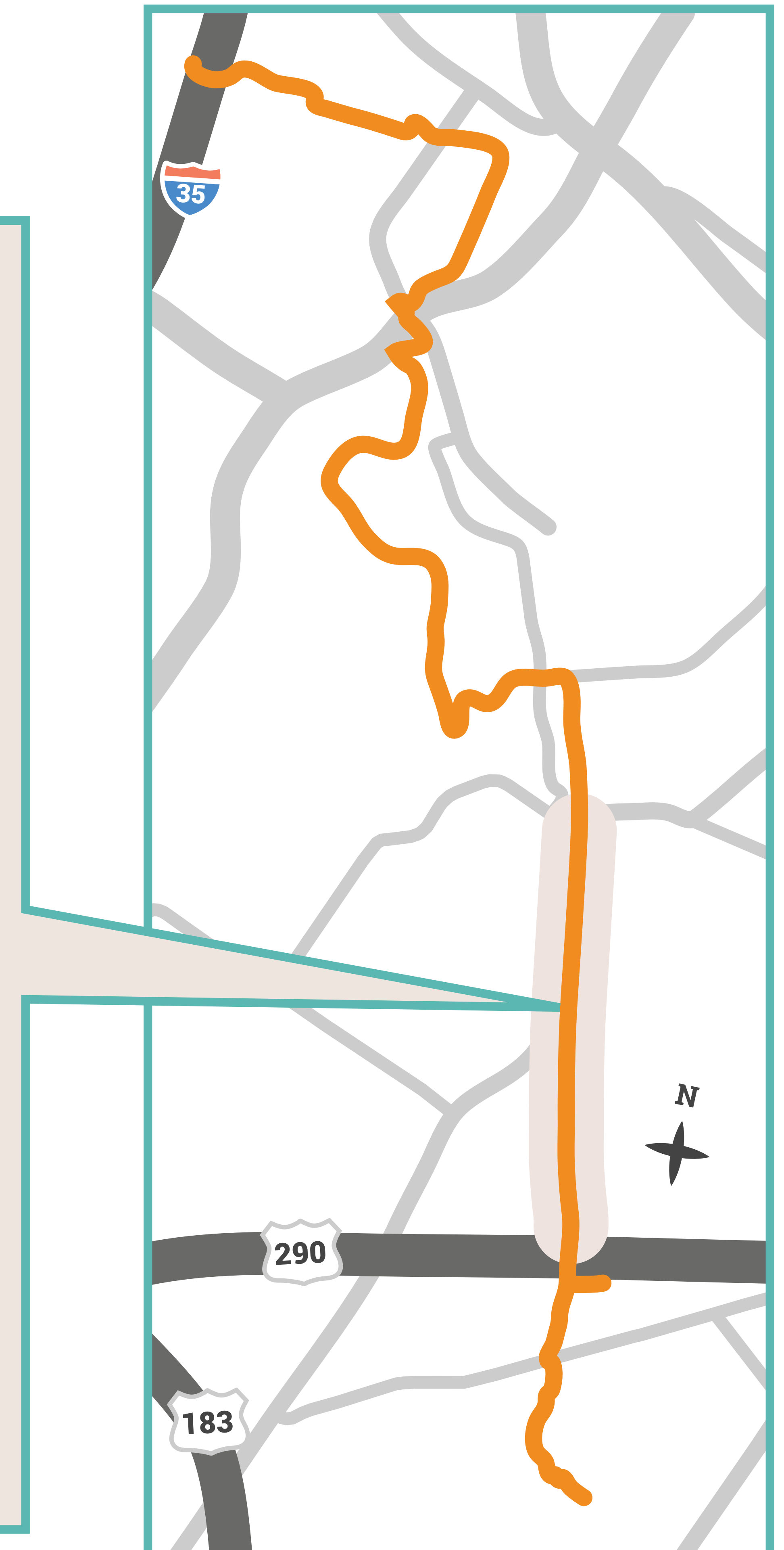


Legend

Preferred Route

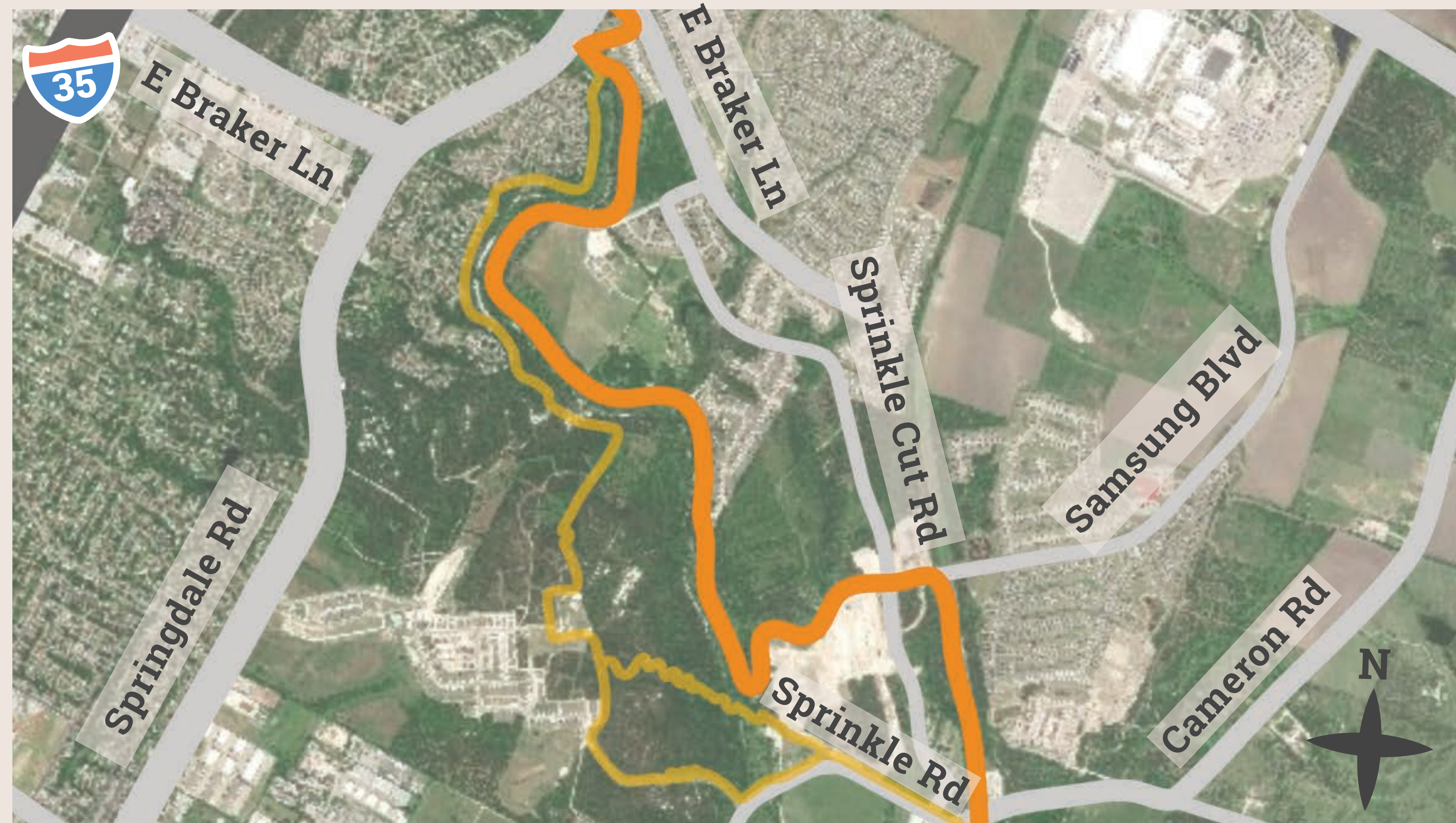


Non-preferred Alternative Route



SEGMENT 3

Sprinkle/Cameron Rds to Dessau Rd

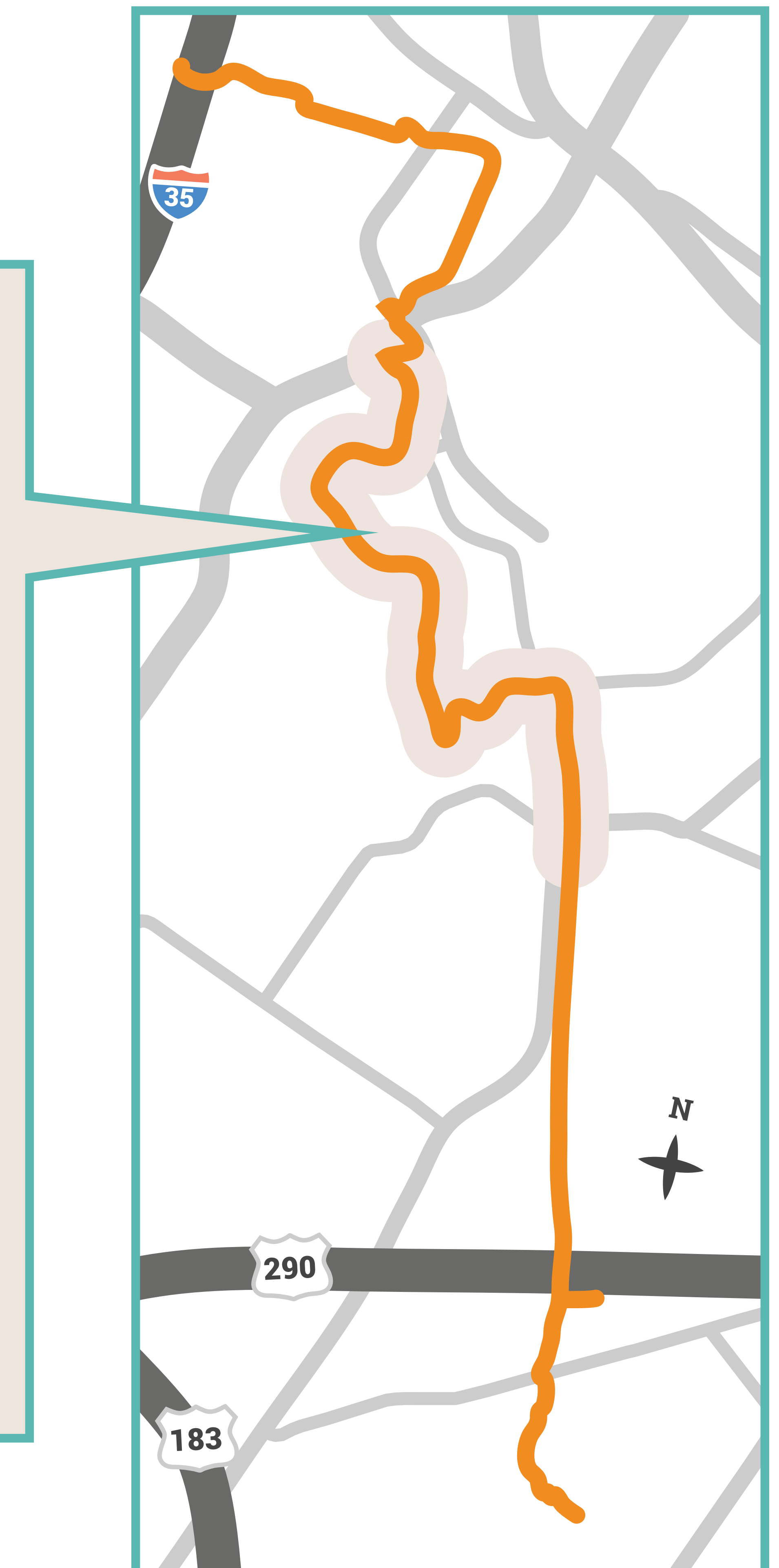


Legend

Preferred Route

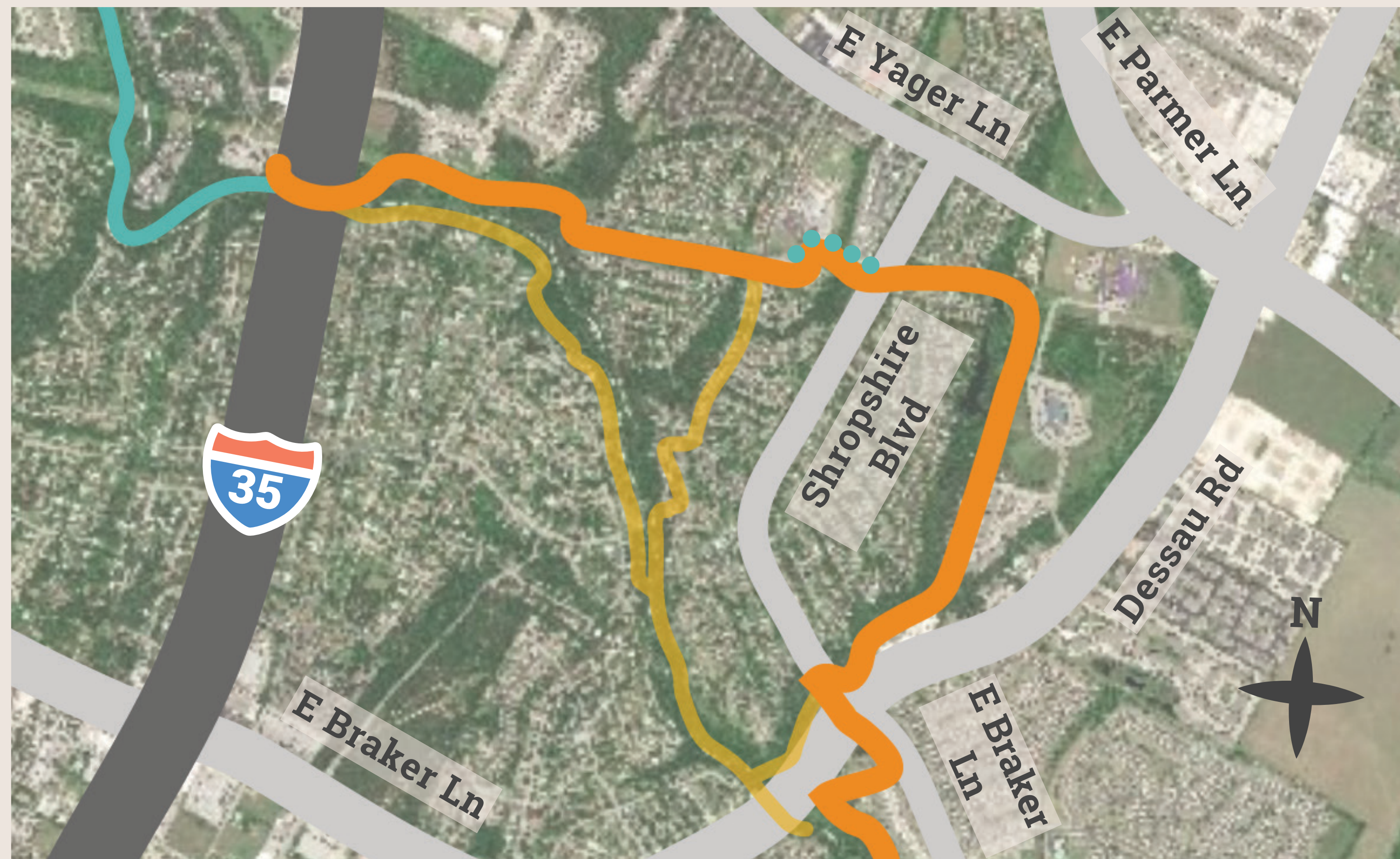


Non-preferred Alternative Route



SEGMENT 4

US 290 to Dessau Rd to IH-35



Legend

Preferred Route



Non-preferred Alternative Route



Connecting Project: NWCT Section 2
(Walnut Creek Metropolitan Park to IH-35)



Connecting Project: Safe Routes to School
Shropshire Blvd Trail Connection

