



LA LOMA TRAIL PUBLIC MEETING

October 17, 2017

LA LOMA TRAIL PUBLIC MEETING

Preliminary Engineering Report Public Outreach

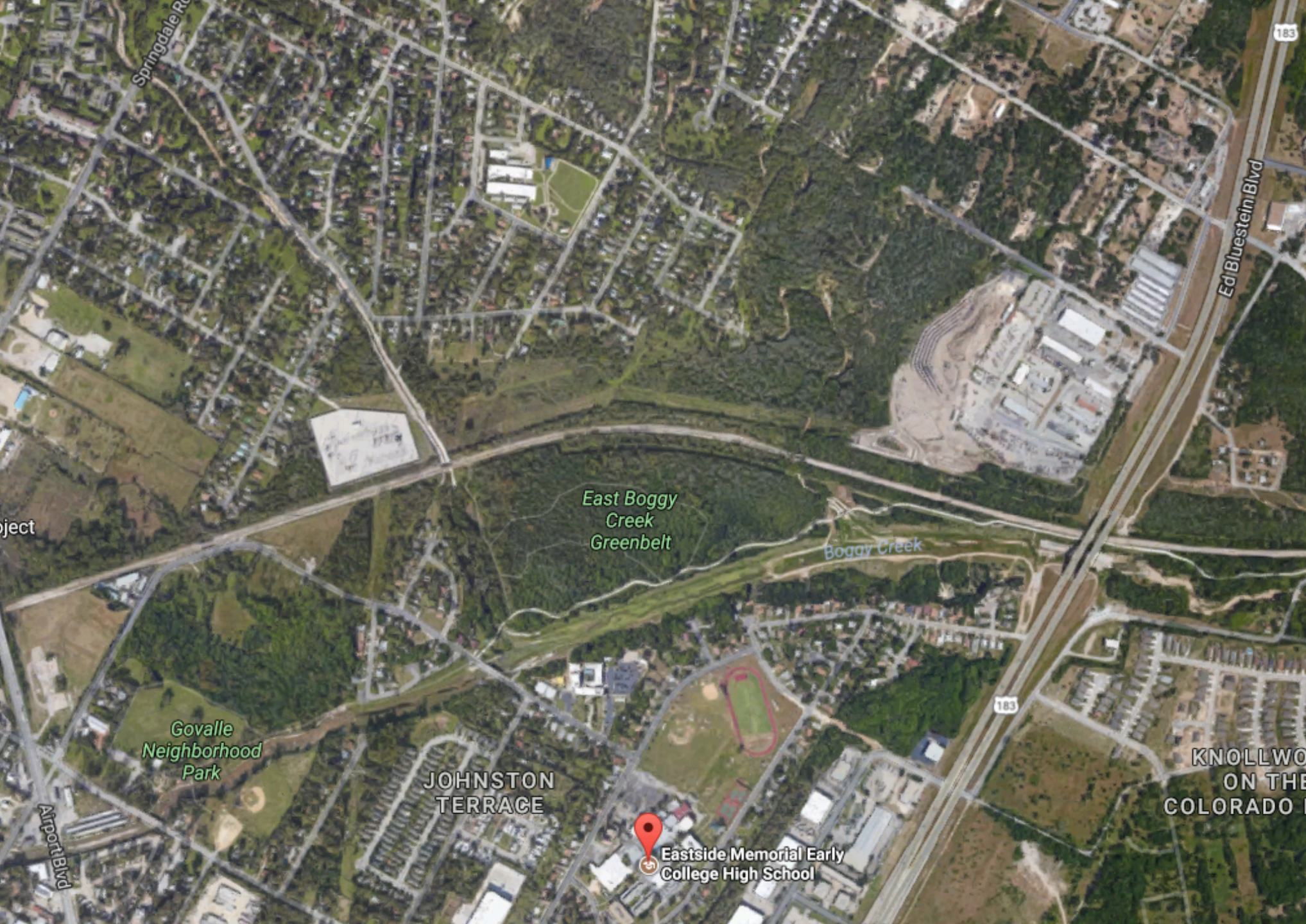
AGENDA

- Introduction of Project Team
- Walnut Creek Trail Connector - La Loma Summary
- Overall Program Goal
- Preliminary Engineering Report Overview
- Outline of Alternatives
- Evaluation Criteria
- Public Input - Questions

PROJECT TEAM

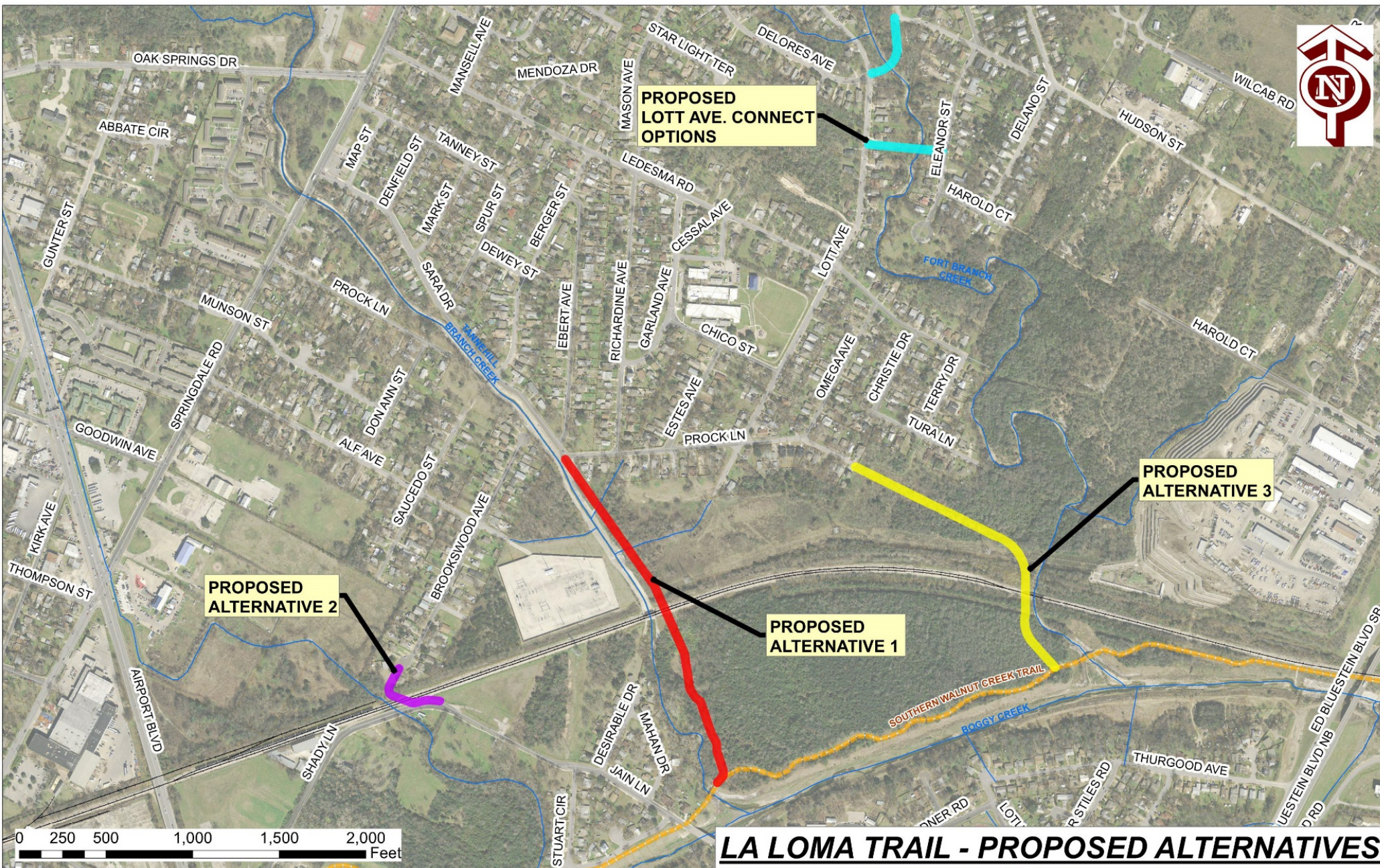
- City Project Sponsor – Janae Spence, PWD
- City Project Manager – Jose Ibarra, PWD – PMD
- City Parks and Recreation Rep – D’Anne Williams - PARD
- Project Consultant – COA Engineering Services Division:
 - Carlos Garcia, PE – Supervising Engineer
 - Jothika Thivakaran, PE
 - Kimberly Gilbertson
- Subconsultant: Aptim Environmental & Infrastructure, Inc.
 - Patricia Frost, PG

PROJECT SUMMARY



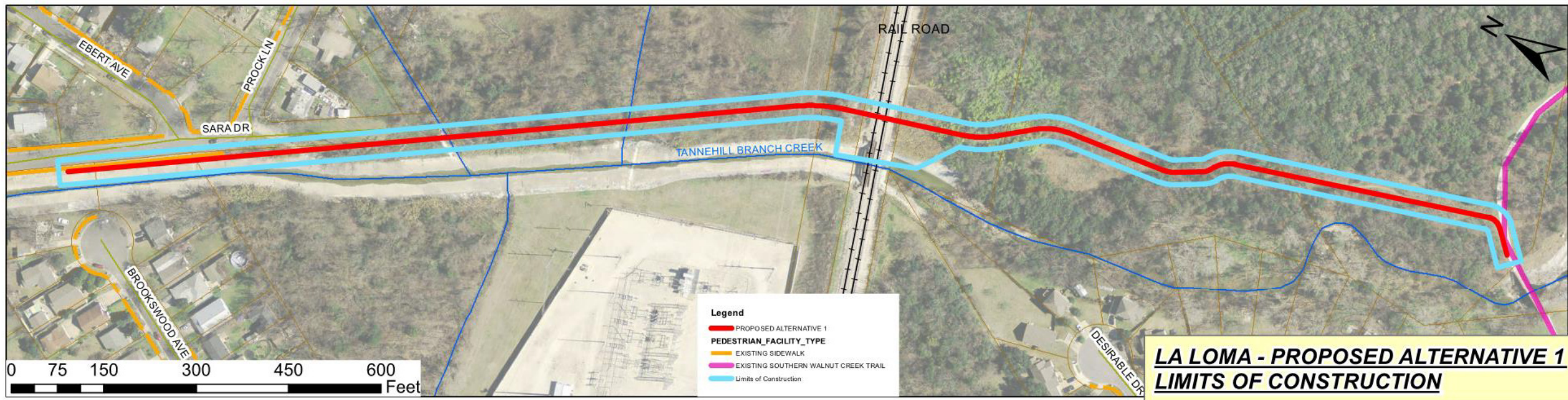
PROJECT FACTS

- Project Funded by 2016 Mobility Bond Program
- Preliminary Engineering Report: April 2017 – April 2018
- Design Phase: Pending Project Funding
- Construction: Pending Project Funding
- Project website: <http://www.austintexas.gov/lalomatrail>



LA LOMA TRAIL - PROPOSED ALTERNATIVES

ALTERNATIVE 1



ALTERNATIVE 1



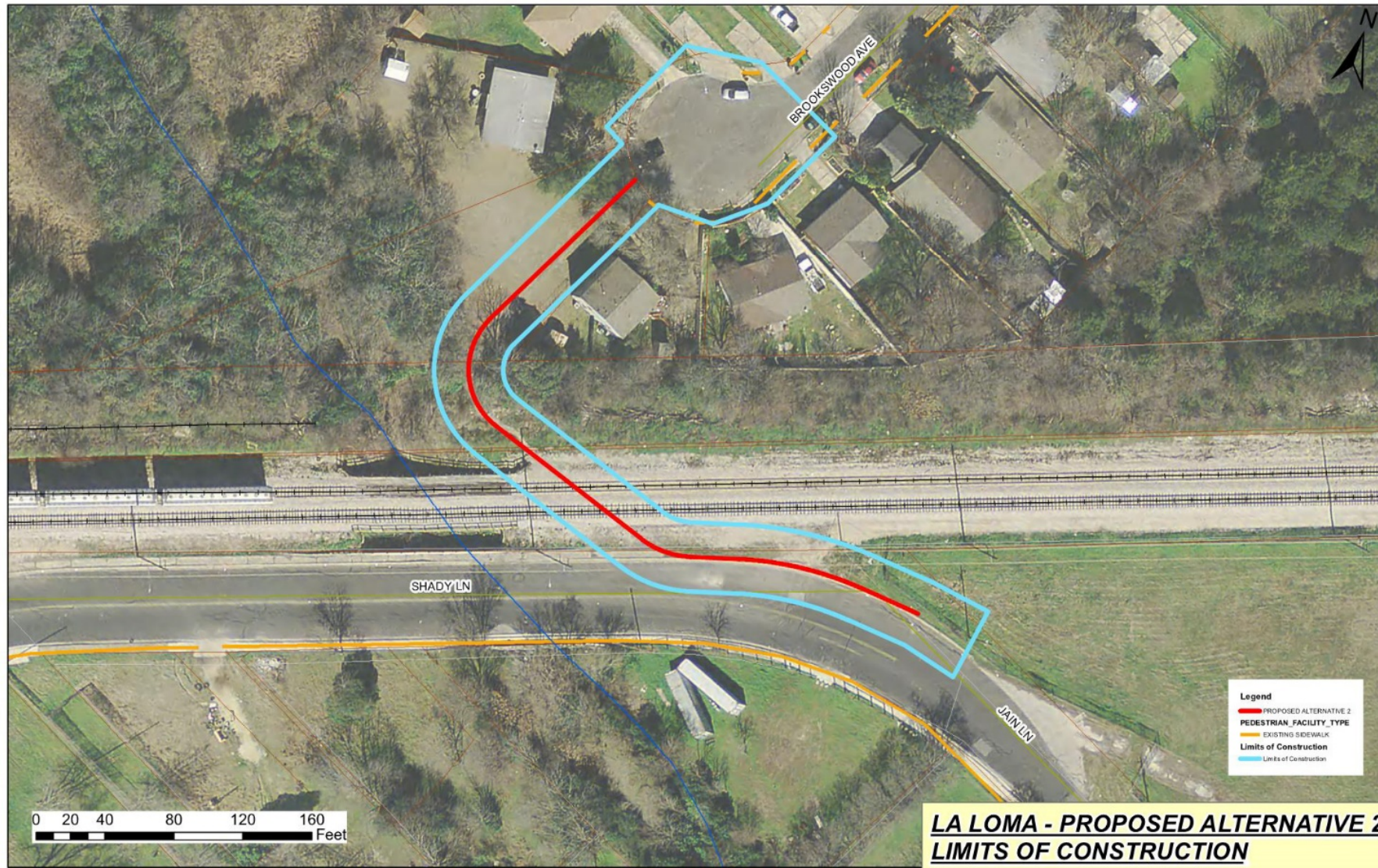
ALTERNATIVE 1



ALTERNATIVE 1



ALTERNATIVE 2



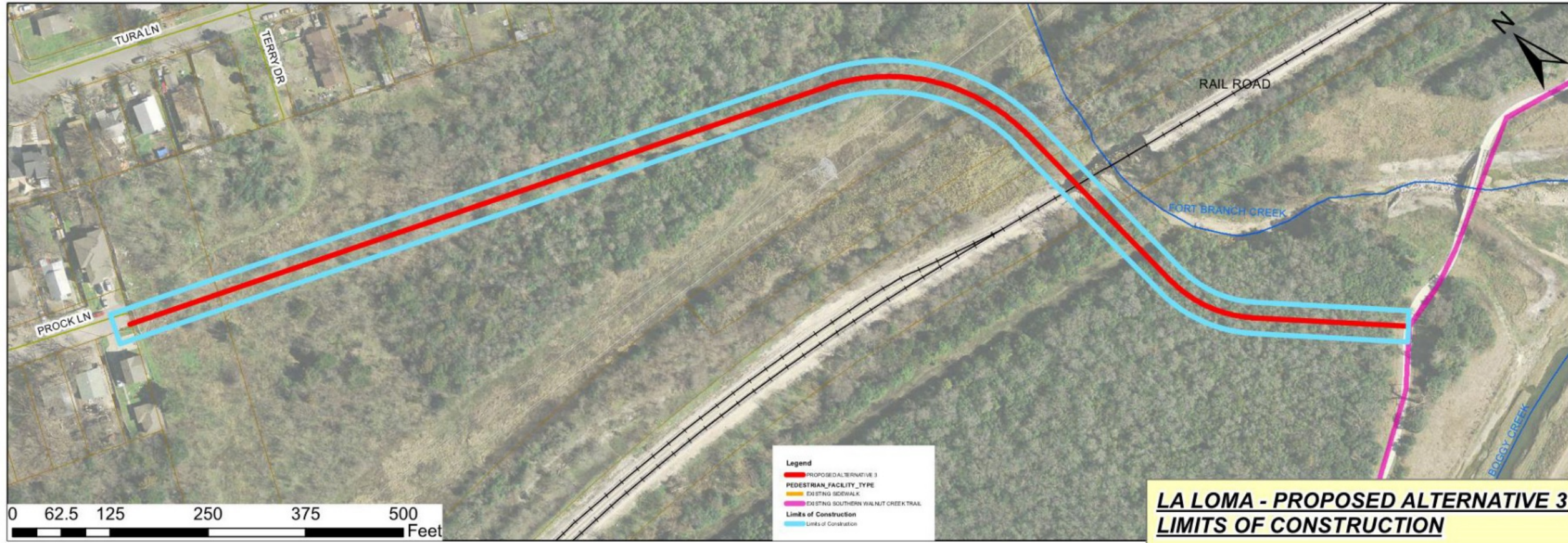
ALTERNATIVE 2



ALTERNATIVE 2



ALTERNATIVE 3



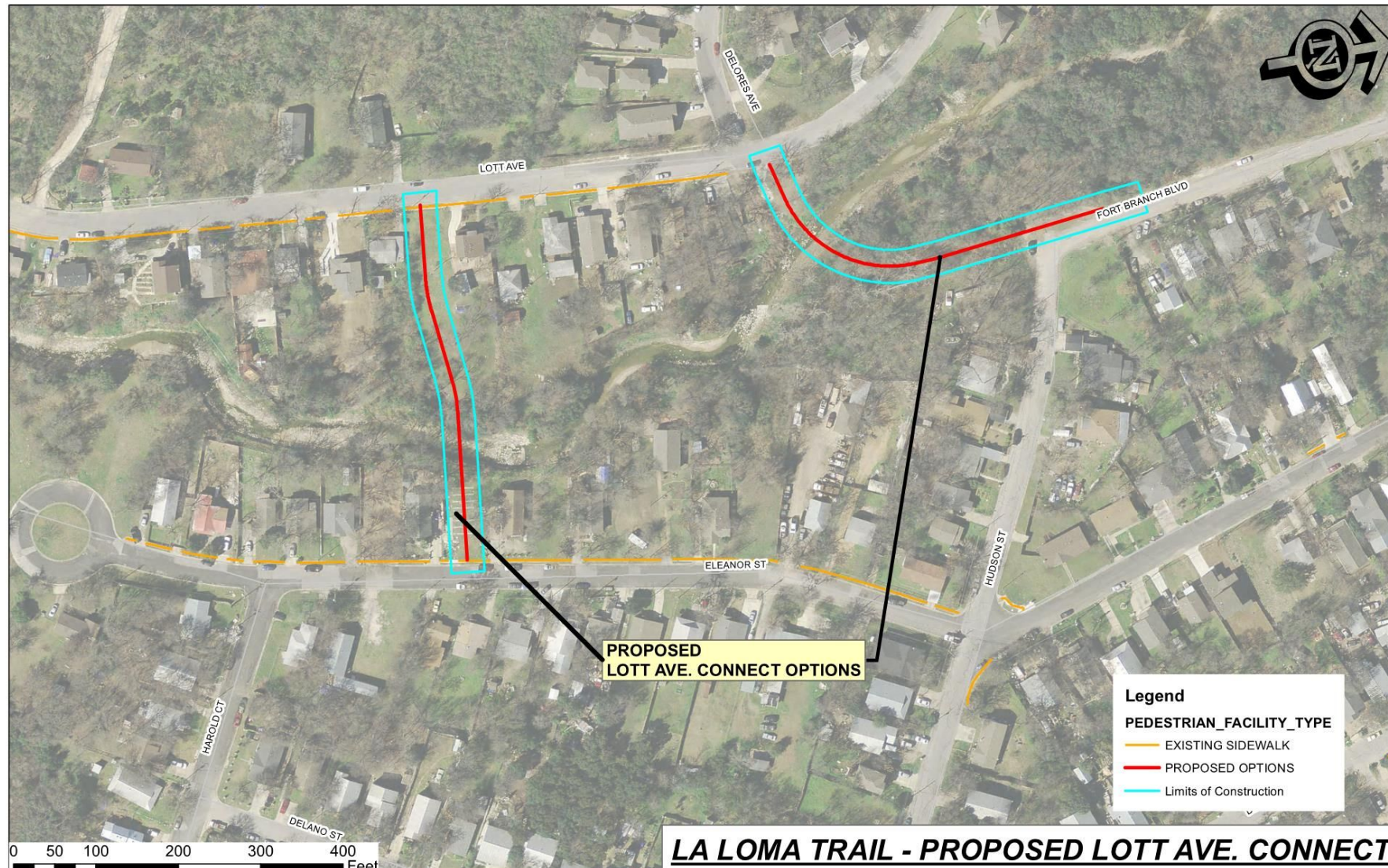
ALTERNATIVE 3



ALTERNATIVE 3



NEIGHBORHOOD CONNECTOR



SOUTHERN CONNECTION



SOUTHERN CONNECTION



NORTHERN CONNECTION



EVALUATION FACTORS

- Public feedback
- Cultural Assessment
- Community Impact
- Cost
- Topography, Accessibility
- Tree Canopy Impacts
- Connectivity
- Location of Utilities
- Property Ownership
- Surrounding Land Use
- Floodplain/Drainage
- Environmental
- Erosion Hazard Zone
- Wildlife Habitat