

NORTHERN WALNUT CREEK TRAIL -SECTION 2

FEBRUARY 25, 2020

austin
MOTION
2016 MOBILITY BOND



PROJECT OVERVIEW

- 1.7 mile long segment of the Walnut Creek Trail System
- Connects Walnut Creek Metropolitan Park to IH-35
- Overall system connects Govalle Neighborhood Park to Balcones District Park

Walnut Creek Trail System Map

Legend

Southern Walnut Creek Trail

Govalle Park to Daffan Lane – Existing Trail

Northern Walnut Creek Trail Section 1

Balcones District Park to Walnut Creek Metropolitan Park – Existing Trail*

★ Northern Walnut Creek Trail Section 2

Walnut Creek Metropolitan Park to IH-35 – Proposed Trail

Northern Walnut Creek Trail Section 3

IH-35 to Southern Walnut Creek Trail – Proposed Trail; currently in Preliminary Engineering

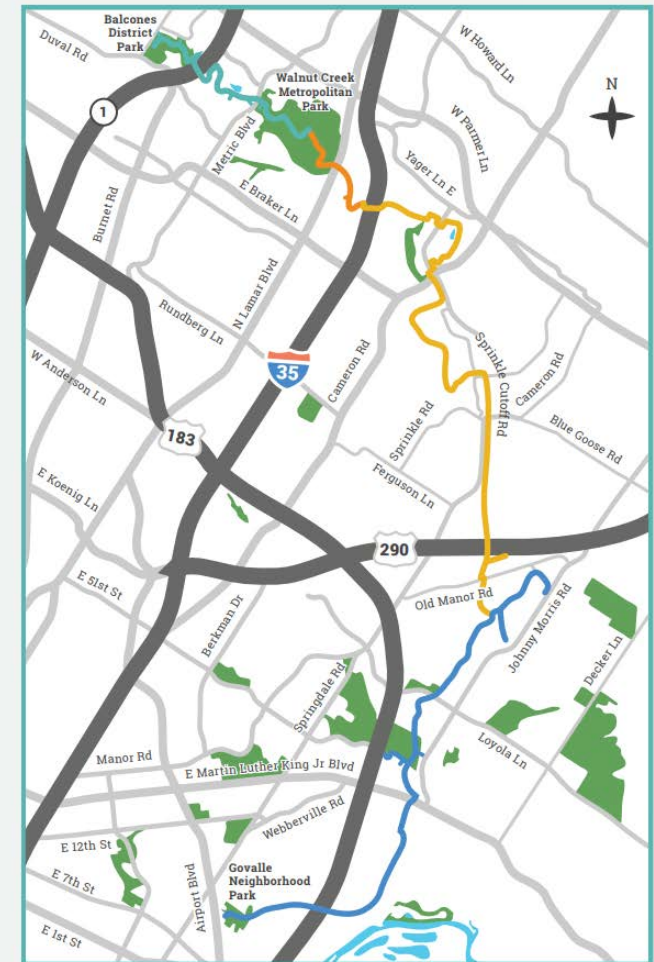
*Final construction within Northern Walnut Creek Trail Section 1 is anticipated for completion in Oct. 2019

Project Website:

[AustinTexas.gov/WalnutCreekTrail](https://austintexas.gov/WalnutCreekTrail)

Contact: Genest.Landry@AustinTexas.gov

[@AUSTINMOBILITY](https://twitter.com/AUSTINMOBILITY) [@AUSTINTEXASGOV](https://www.instagram.com/austintexasgov) [/ATXPUBLICWORKS](https://www.facebook.com/atxpublicworks)



PROJECT STATUS

Project Timeline

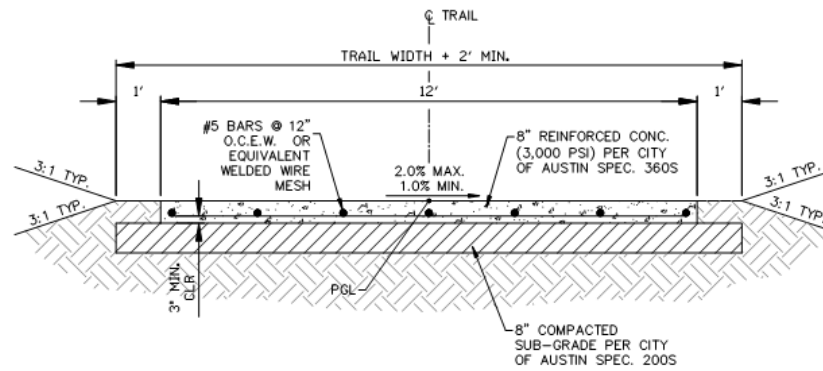


DESIGN FEATURES

- 12' Concrete path designed for all users and abilities
- 8' wide connection at Walnut Bluffs, 12' wide connections at Walnut Metropolitan Park, N Lamar Blvd, and IH-35
- Constructed entirely on City or TxDOT owned land and existing easements
- Lighting to be added at N Lamar Blvd as part of the Corridor project. No lighting elsewhere.
- Designed to new ATLAS-14 flood conditions with no adverse impact

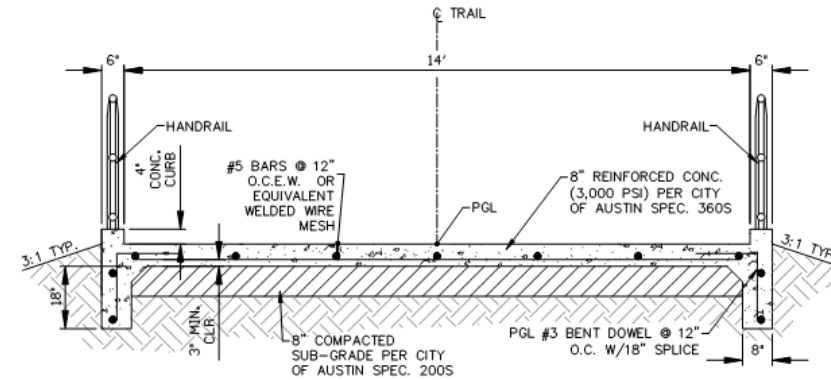


DESIGN FEATURES



CONCRETE TRAIL TYPICAL SECTION #1

N.T.S.
STA. 10+16.67 - STA. 14+50.00 (MAIN TRAIL)
STA. 16+50.00 - STA. 29+50.00 (MAIN TRAIL)
STA. 71+21.80 - STA. 80+88.92 (MAIN TRAIL)
STA. 90+44.00 - STA. 91+00.94 (MAIN TRAIL)



**CONCRETE TRAIL TYPICAL SECTION #4
(TRANSITION BETWEEN TRAIL AND BOARDWALK/BRIDGE)**

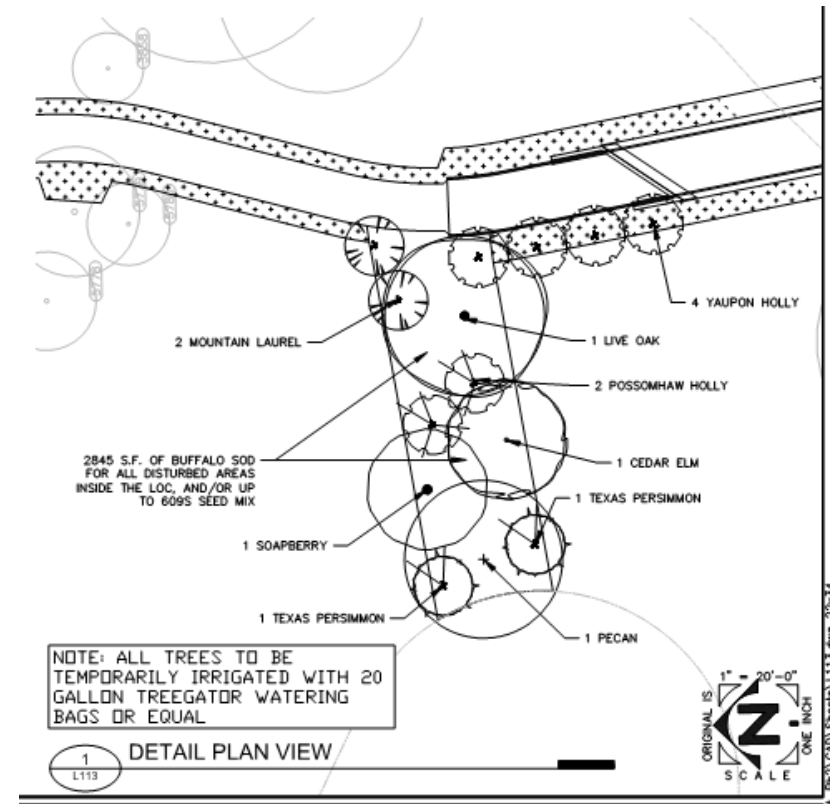
N.T.S.
STA. 34+70.00 - STA. 34+95.00 (MAIN TRAIL)
STA. 36+95.00 - STA. 37+20.00 (MAIN TRAIL)
STA. 45+55.00 - STA. 47+75.00 (MAIN TRAIL)
STA. 69+01.80 - STA. 69+51.80 (MAIN TRAIL)
STA. 70+71.80 - STA. 71+21.80 (MAIN TRAIL)
STA. 81+13.92 - STA. 81+63.92 (MAIN TRAIL)
STA. 90+20.00 - STA. 90+44.00 (MAIN TRAIL)
STA. 10+35.00 - STA. 10+60.00 (CONNECTION #2)
STA. 11+40.00 - STA. 11+65.00 (CONNECTION #2)

DESIGN FEATURES



TRAIL CONSTRUCTION

- Working Hours within Walnut Creek Neighborhood: 8:00 AM to 5:00 PM
- 30' Construction entrance at City owned property on Cedarbrook Ct. cul-de-sac
- Landscaping/tree plantings planned within construction limits at cul-de-sac



MORE INFORMATION

- Project Website:
[AustinTexas.gov/WalnutCreekTrail](https://austintexas.gov/WalnutCreekTrail)

- Contact Information:

Genest Landry, Project Manager
(512)974-8749
Genest.Landry@austintexas.gov

Ana Seivert, Urban Trails Project Coordinator
(512)974-2858
Ana.Seivert@austintexas.gov

The screenshot shows the website data.austintexas.gov, the official City of Austin open data portal. The page features a navigation menu with links for Home, Regional Program, Corridor Program, Local Program, Project Explorer, What's New, Contact Us, and Get Notifications. The main content area displays the Austin Motion Local Mobility Program logo and a circular icon of a bicycle. Below this, the heading "Walnut Creek Trail System" is followed by a paragraph: "The [Austin Public Works Urban Trails Program](#) is currently developing the Walnut Creek Trail System. Once completed, this 19-mile trail network will connect the Govalle Neighborhood Park in East Austin to the Balcones District Park in North Austin, along with many other parks, neighborhoods and landmarks along Walnut Creek. Two sections of the Walnut Creek Trail System are being developed through the [2016 Mobility Bond](#)." Below the text is a section titled "Trail Network Limits" with a map showing the Balcones District.

QUESTIONS?