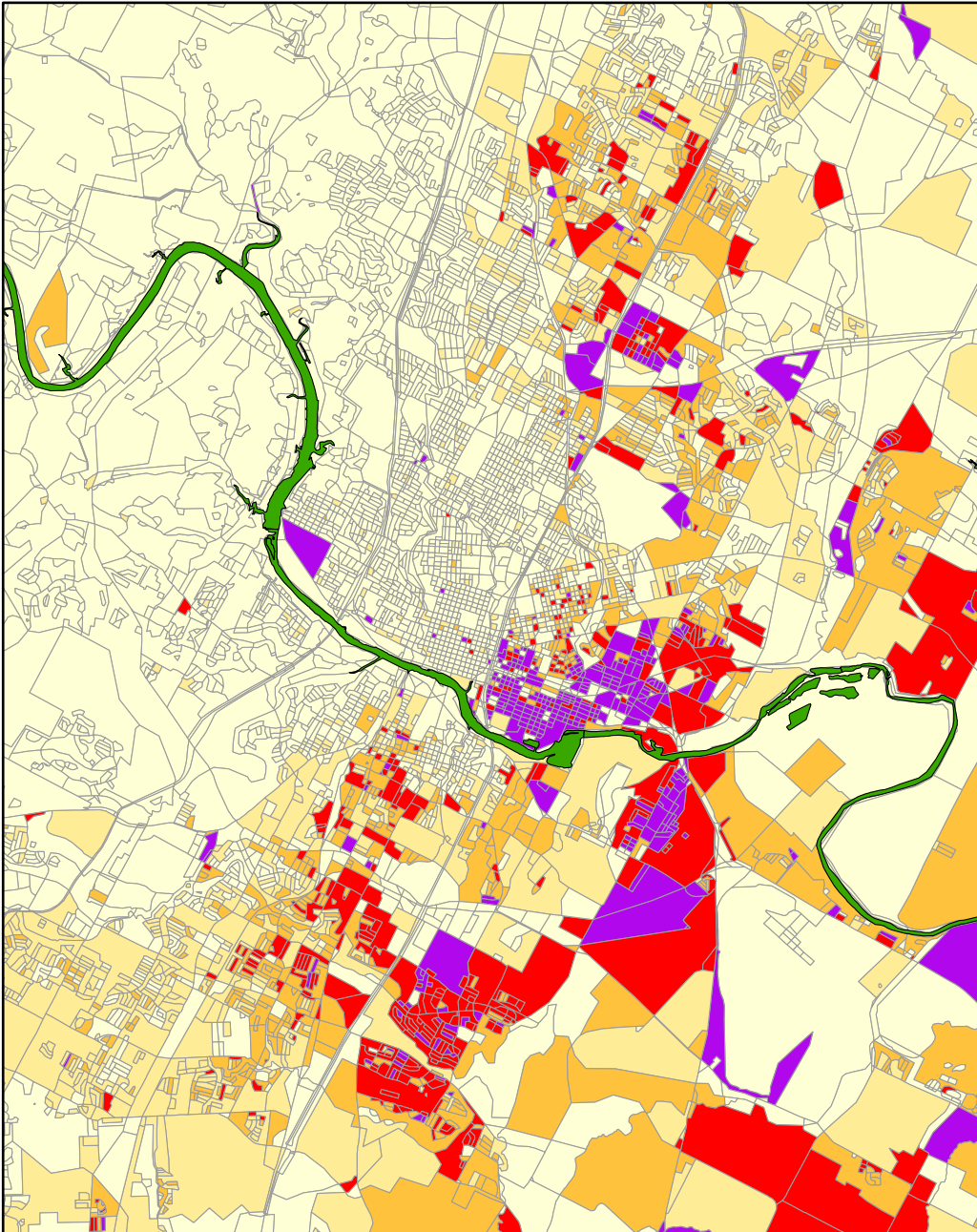


Changing Hispanic Landscape

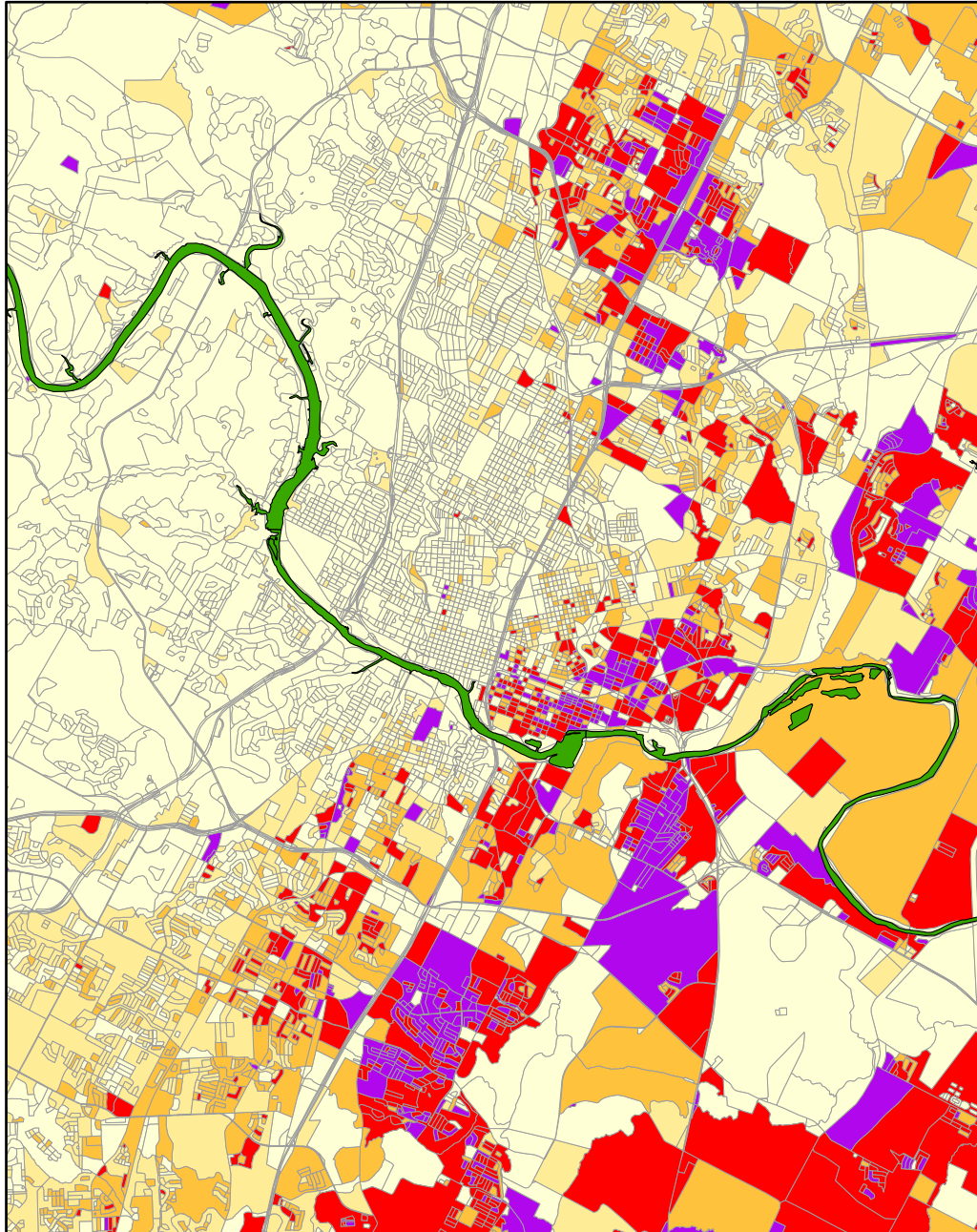
Hispanic--Latino Population Concentrations, 2000 and 2010



Census 2000 Data
Census Blocks

Percentage of the Total Population that is of Hispanic Origin

- Less than 20%
- 20% to 40%
- 40% to 60%
- 60% to 80%
- 80% Plus



Census 2010 Data
Census Blocks

Percentage of the Total Population that is of Hispanic Origin

- Less than 20%
- 20% to 40%
- 40% to 60%
- 60% to 80%
- 80% Plus

Map produced by Ryan Robinson, City Demographer, Department of Planning, City of Austin, February 2011.