



## **Interactive 2017 Zilker Park Area Schedules** **(Click on the DATE RANGE to view the appropriate map)**

### **Maintenance Week and Transition Period**

**[October 28 – November 1](#) [Transition Period](#)**

### **Trail of Lights**

**[November 2 – 15](#) [Load In Period](#)**

**[November 16 – December 1](#) [Load In Period](#)**

**[December 2-23](#) [Load in \(cont.\) and event period](#)**

**(Event Days December 2 (fun run), and 9-23 are public event nights within this period.)**

## 2017 Zilker Park Area OPEN Area Schedule at a Glance

All subject to weather conditions during the subject time period.

## Trail of Lights Festival (Event Nights Dec 2, and 9-23)

**Time Period**  
Oct. 28 – Nov 1  
[Main Menu](#)

### Areas Open:

Great Lawn, Picnic Areas, Rugby Field, Polo Field, Playscape, Greenbelt, Stratford Field

### Facilities Open:

McBeth, Zilker Botanical Garden, Austin Nature and Science Center, Barton Springs Pool

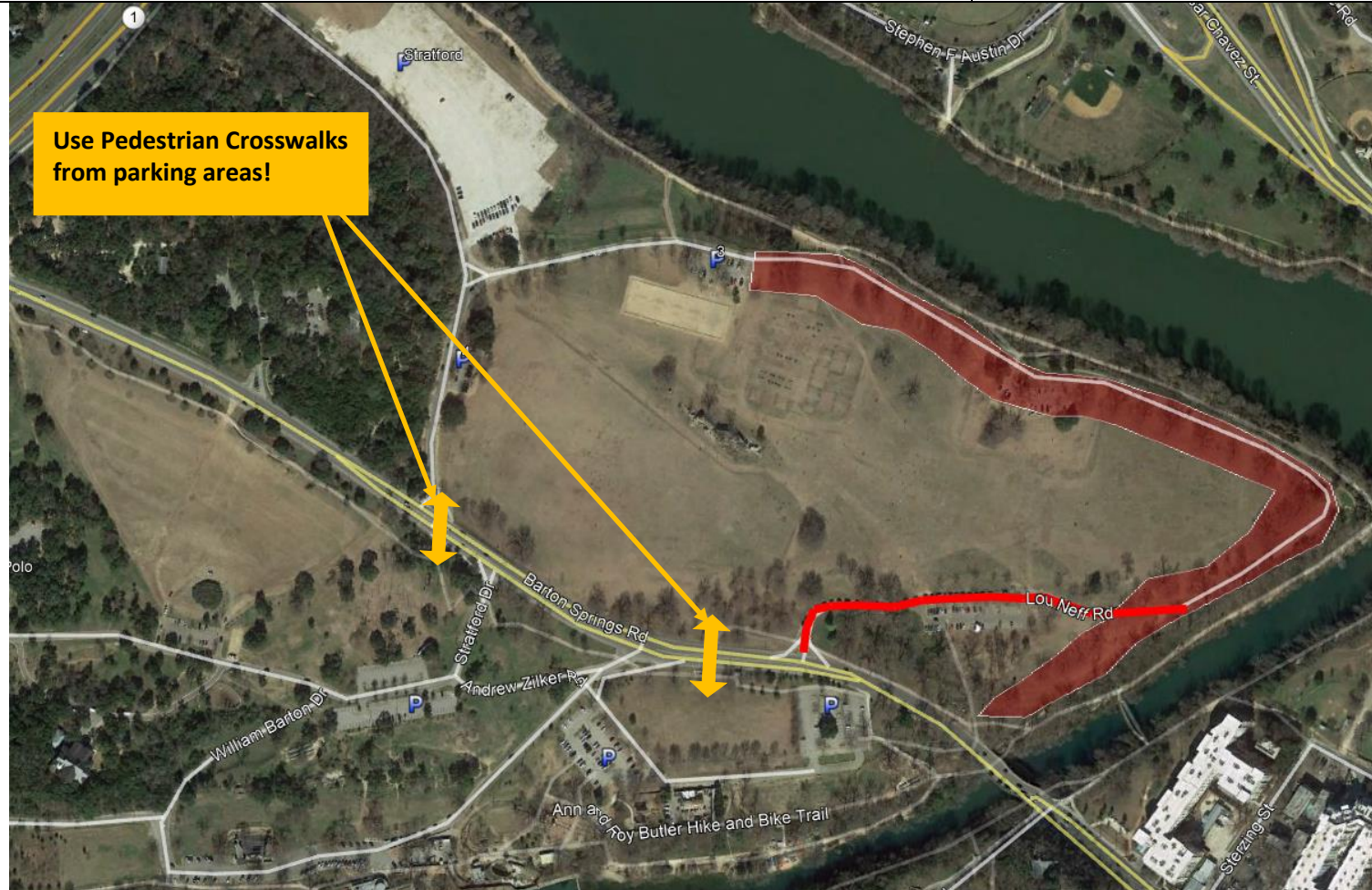
**Park Access:** Utilize all north and south side main park entrances and parking areas, including Lou Neff. Parking Lot 2 along Lou Neff will be closed for equipment storage for Trail of Lights.



## 2017 Zilker Park Area OPEN Area Schedule at a Glance

All subject to weather conditions during the subject time period.

## Trail of Lights Festival (Event Nights Dec 2, and 9-23)



Use Pedestrian Crosswalks from parking areas!

**Time Period**

Nov. 2-15

[Main Menu](#)

### **Closed Areas in Red**

#### **Areas Open:**

Picnic Areas, Rugby Field, Polo Field, Playscape, Greenbelt, Volleyball Courts, Great Lawn as shown

#### **Facilities Open:**

McBeth, Zilker Botanical Garden, Austin Nature and Science Center, Barton Springs Pool

**Park Access:** Utilize the south side park entrances and parking areas.

#### **Road Closures:**

**Lou Neff - see red line**

[www.austintexas.gov/ace](http://www.austintexas.gov/ace)

**Expect higher pedestrian/vehicular traffic in area.**

## 2017 Zilker Park Area OPEN Area Schedule at a Glance

All subject to weather conditions during the subject time period.

## Trail of Lights Festival (Event Nights Dec 2, and 9-23)



Use Pedestrian Crosswalks  
from parking areas!

**Time Period**  
Nov. 16 – Dec. 1  
[Main Menu](#)

### **Closed Areas in Red**

#### **Areas Open:**

Picnic Areas, Rugby Field, Polo Field, Playscape, Greenbelt, Great Lawn as shown

#### **Facilities Open:**

McBeth, Zilker Botanical Garden, Austin Nature and Science Center, Barton Springs Pool

**Park Access:** Utilize the south side main park entrances and parking areas.

#### **Road Closures:**

**Lou Neff inside noted area.**

[www.austintexas.gov/ace](http://www.austintexas.gov/ace)

**Expect higher pedestrian/  
vehicular traffic in area.**

## 2017 Zilker Park Area OPEN Area Schedule at a Glance

All subject to weather conditions during the subject time period.

## Trail of Lights Festival (Event Nights Dec 2, and 9-23)

**Time Period**

Dec. 2-23

[Main Menu](#)



### **Closed Areas in Red**

#### **Areas Open:**

After 4:30 pm – walk in access only.  
Picnic Areas, Rugby Field, Playscape, Greenbelt, Great Lawn as shown. Prior to 4:30 pm - Stratford Field, Polo Field.

#### **Facilities Open:**

McBeth, Zilker Botanical Garden, Austin Nature and Science Center, Barton Springs Pool.

#### **Park Access:**

- 5 am – approx. 4:30 pm public parking  
After 4:30 pm – permit parking only
- Use the south side main entrances and parking areas.
  - All cars must clear site by 5 pm if not with an event parking permit.

**Road or Lane Closures Nightly:**  
Dec 2, and 9-23.

[www.austintexas.gov/ace](http://www.austintexas.gov/ace)

**see red lines**

**Expect higher pedestrian /vehicular traffic in area.**