

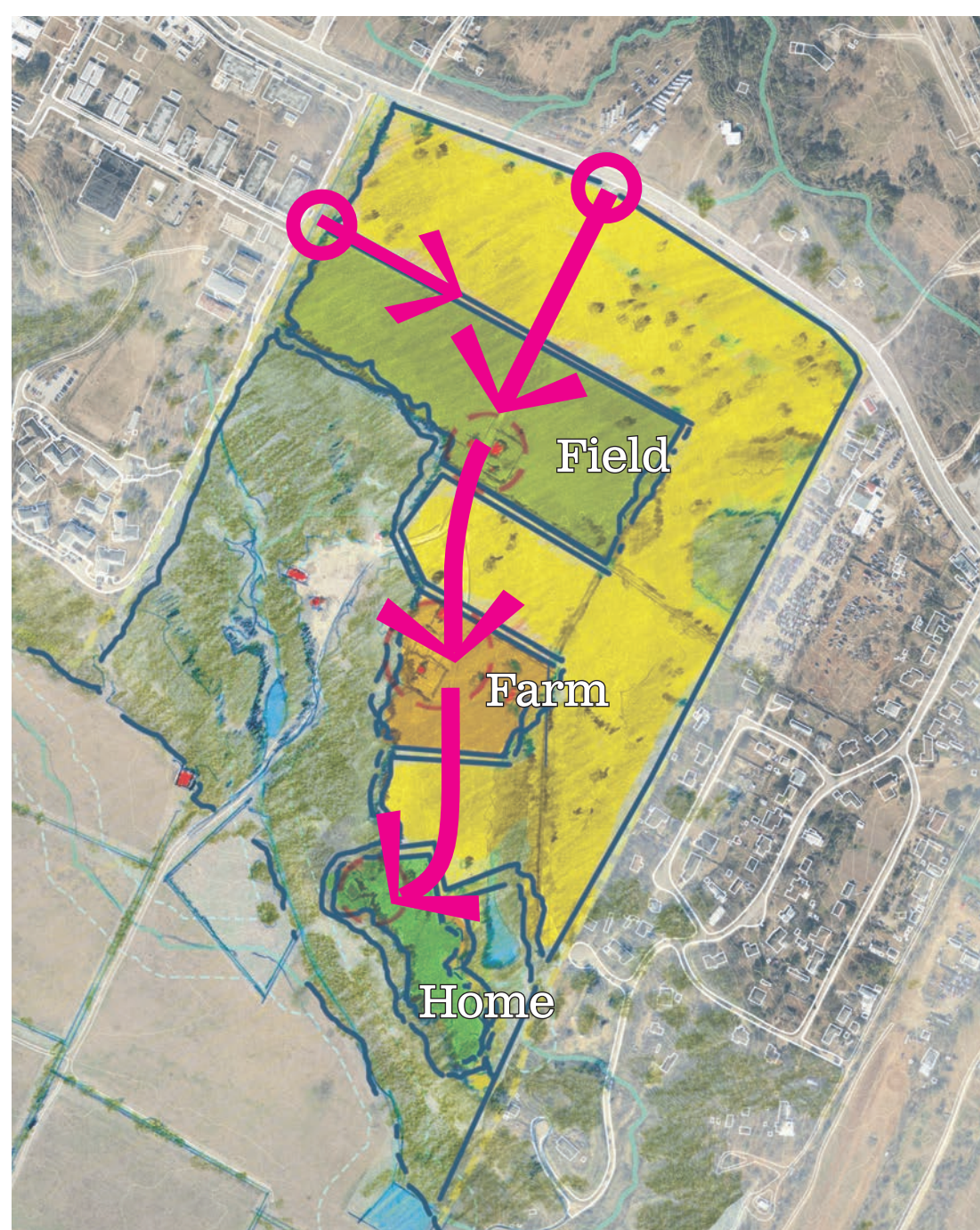


Prairie: Ranch

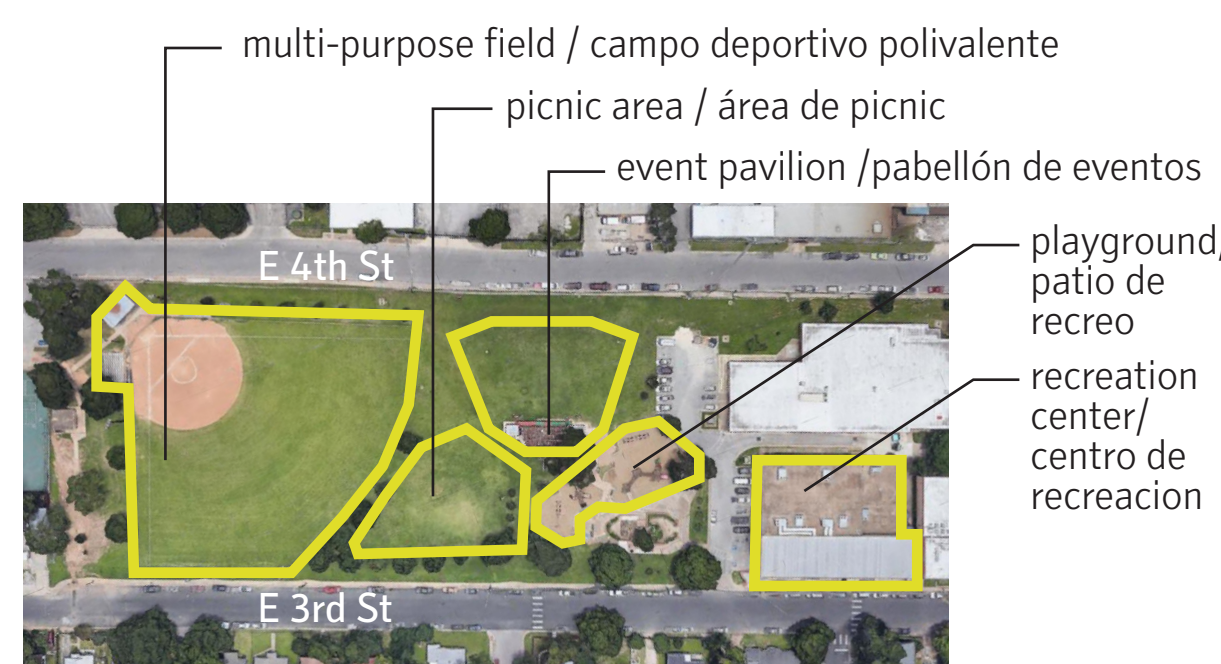
Pradera: Rancho

Description / Descripción

- Three distinct activity centers
Tres centros de actividad distintos
- Central access
Acceso central
- Duplicate and distributed park facilities resources
Recursos de instalaciones de parques duplicados y distribuidos
- Larger spaces closer to perimeter
Espacios más grandes cerca del perímetro



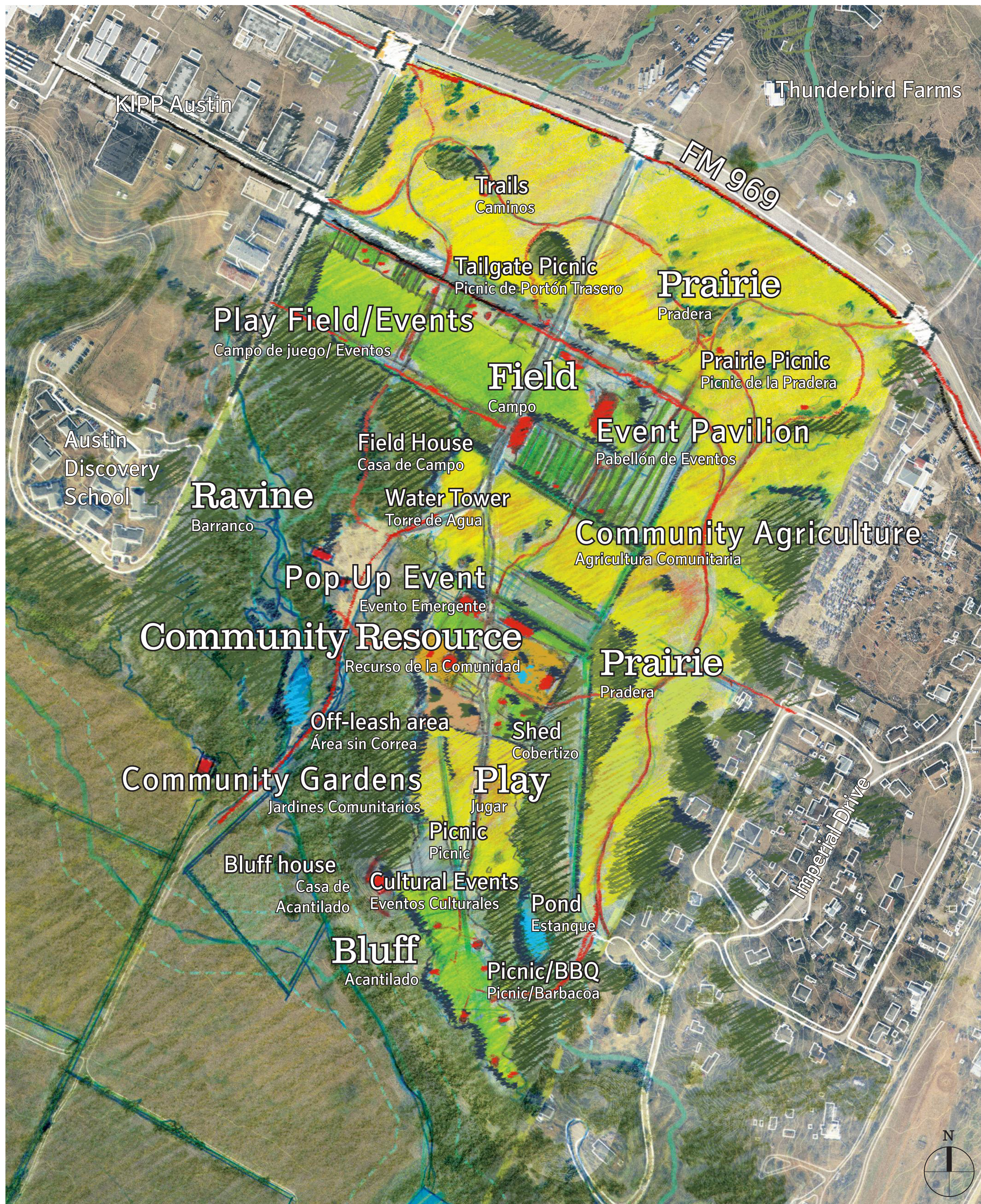
Connecting spine
Conectado el espinazo



Pan American Neighborhood Park (5.23 acres)
Pan-American Parque del Barrio



Scale Comparisons
Comparaciones de escala



Site Plan
Plan de Sitio

SCALE/ESCALA : 1" = 200' 0 100 200 400 800 FEET/PIES

Share your thoughts / Comparta sus pensamientos

Place a green sticker on things you like, or write a note with your comments
Coloque una pegatina verde en las cosas que le gustan o agrega una nota adhesiva con sus comentarios

John Treviño Jr. Metropolitan Park at Morrison Ranch

Community Meeting #3 / Junta Comunitaria #3
www.Austintexas.gov/JohnTrevinoMetroPark

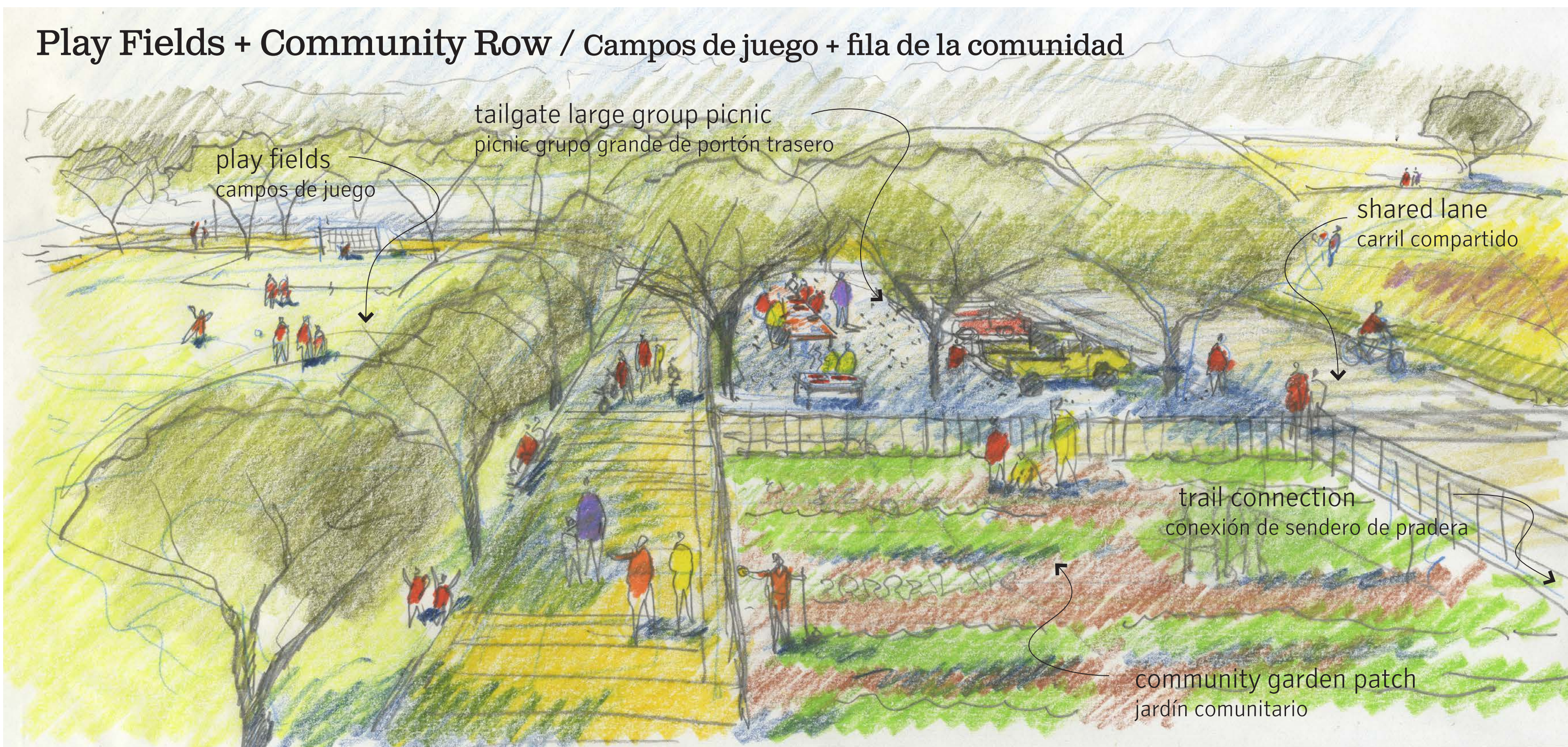




Prairie: Ranch

Pradera: Rancho

Play Fields + Community Row / Campos de juego + fila de la comunidad



walk or bike
caminar o andar en
bicicleta



play or watch sports
jugar o mirar un deporte



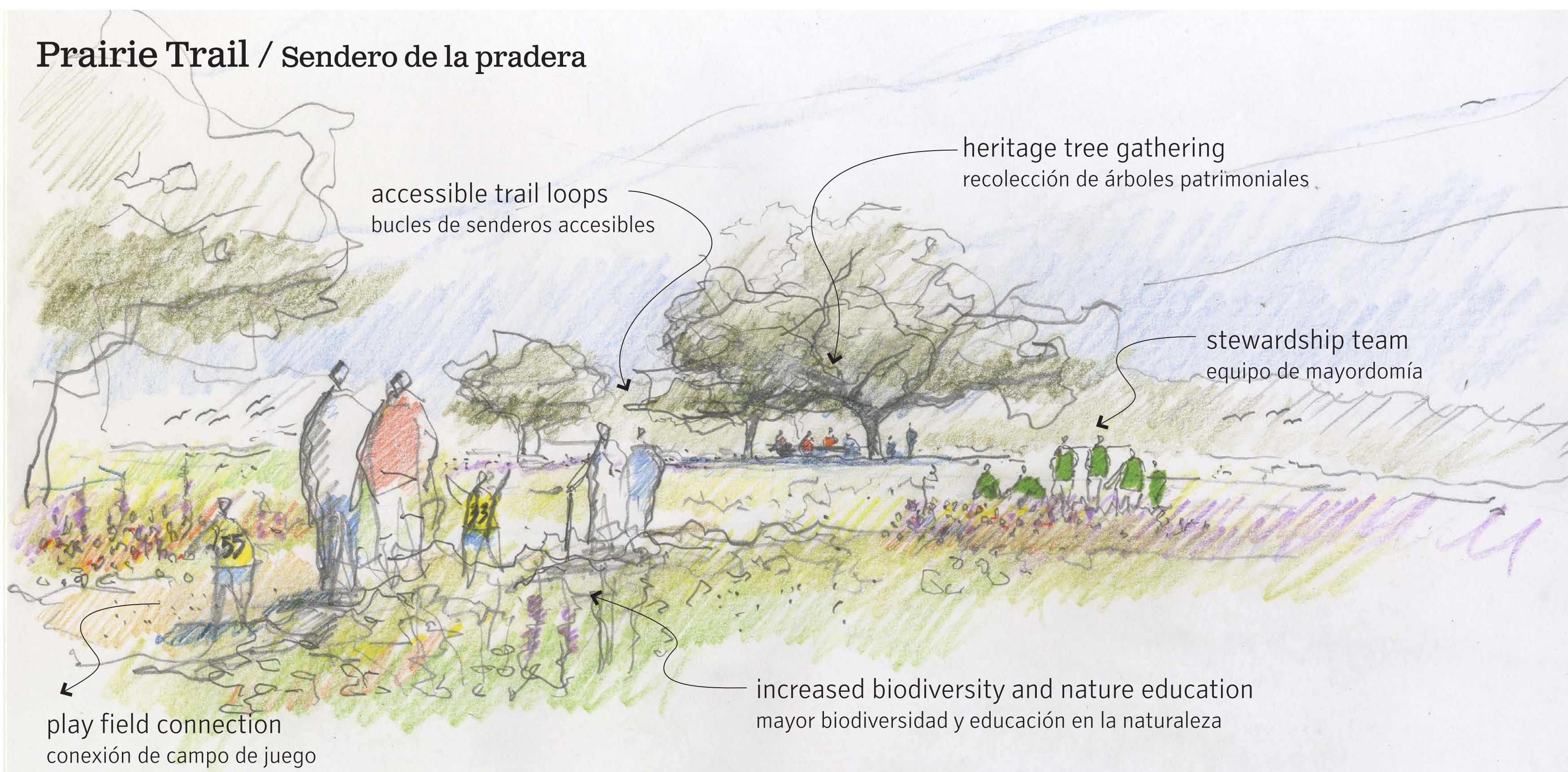
picnic
picnic



be active
ser activo



Prairie Trail / Sendero de la pradera



volunteer
ofrecerse de
voluntario



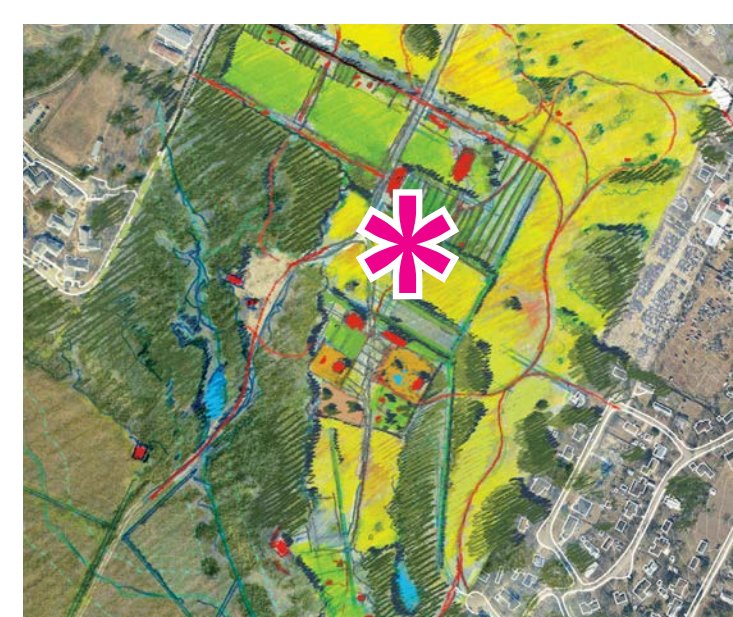
fields + wildflowers
campos + flores
silvestres



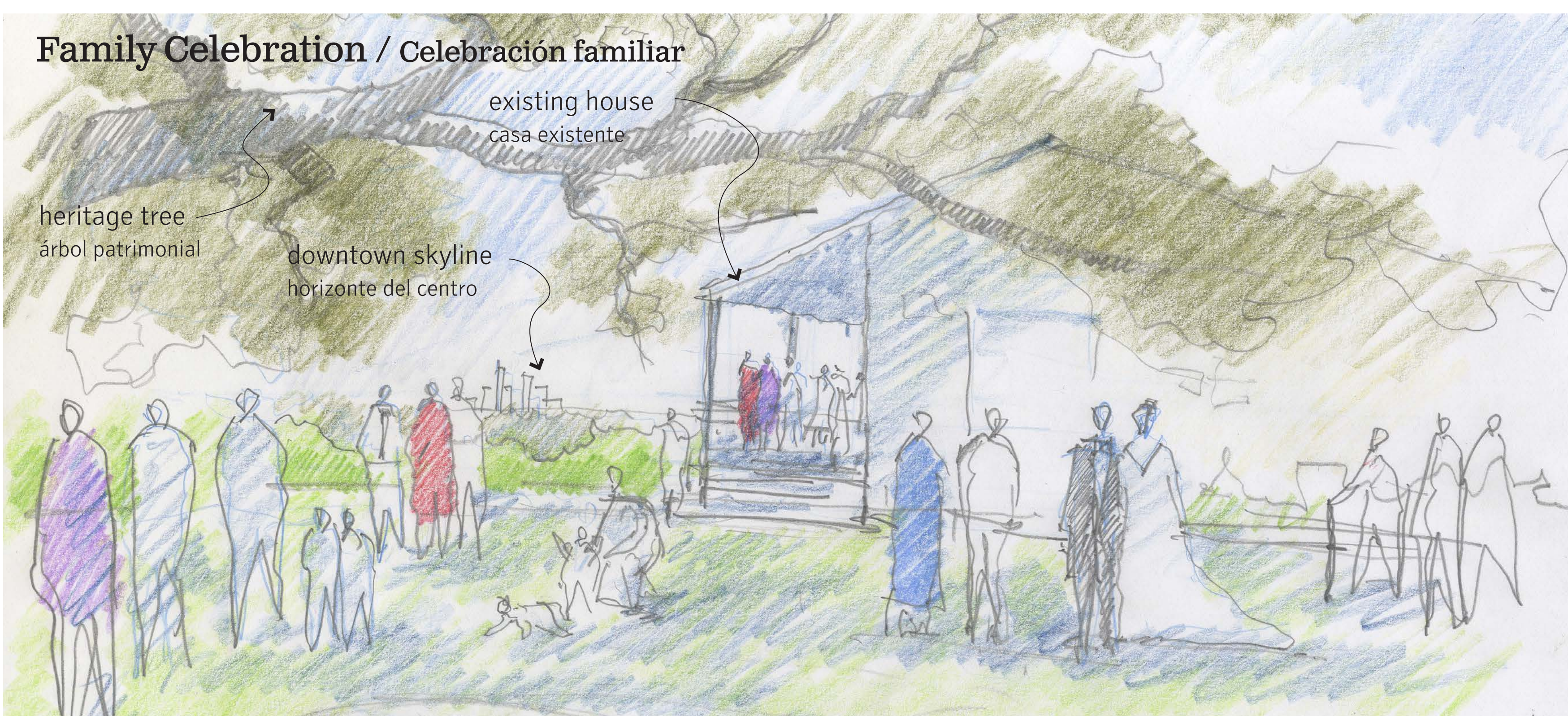
heritage trees
árboles patrimoniales



learn about this place
aprender sobre este lugar



Family Celebration / Celebración familiar



bluff
acantilado



bluff house
casa de acantilado



prairie
pradera



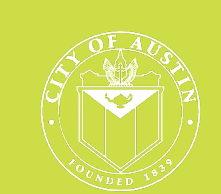
be with family
estar con la familia



John Treviño Jr. Metropolitan Park at Morrison Ranch

Community Meeting #3 / Junta Comunitaria #3

www.Austintexas.gov/JohnTrevinoMetroPark



GGN

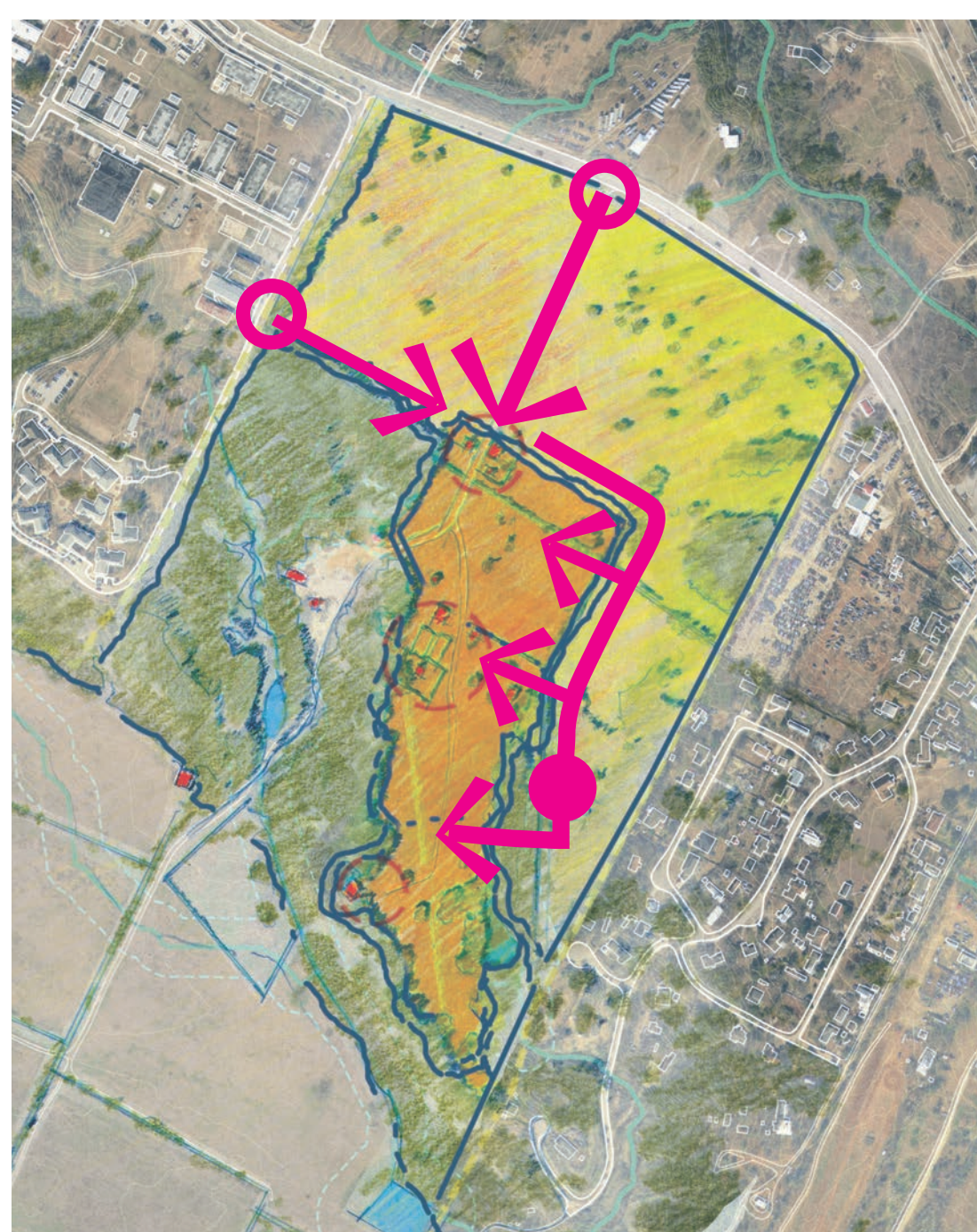


Prairie: Town

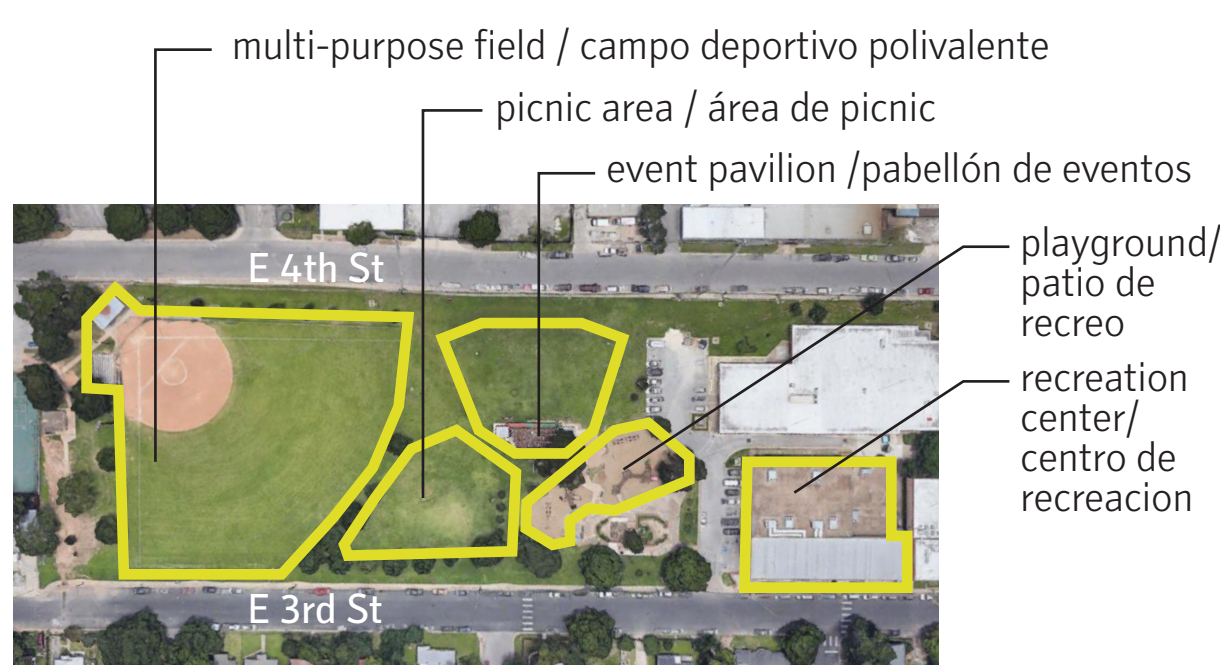
Pradera: Pueblo

Description / Descripción

- Central combined activity center
Centro de actividades combinadas
- Perimeter access
Acceso perimetral
- Consolidated park facilities and resources
Instalaciones y recursos consolidados del parque
- Larger prairie frame
Marco de pradera más grande



Wrapping access / Acceso de envoltura



Pan American Neighborhood Park (5.23 acres)
Pan-American Parque del Barrio



Scale Comparisons
Comparaciones de escala



Site Plan
Plan de Sitio

SCALE/ESCALA : 1" = 200' 0 100 200 400 800 FEET/PIES

Share your thoughts / Comparta sus pensamientos

Place a green sticker on things you like, or write a note with your comments
Coloque una pegatina verde en las cosas que le gustan o agregue una nota adhesiva con sus comentarios

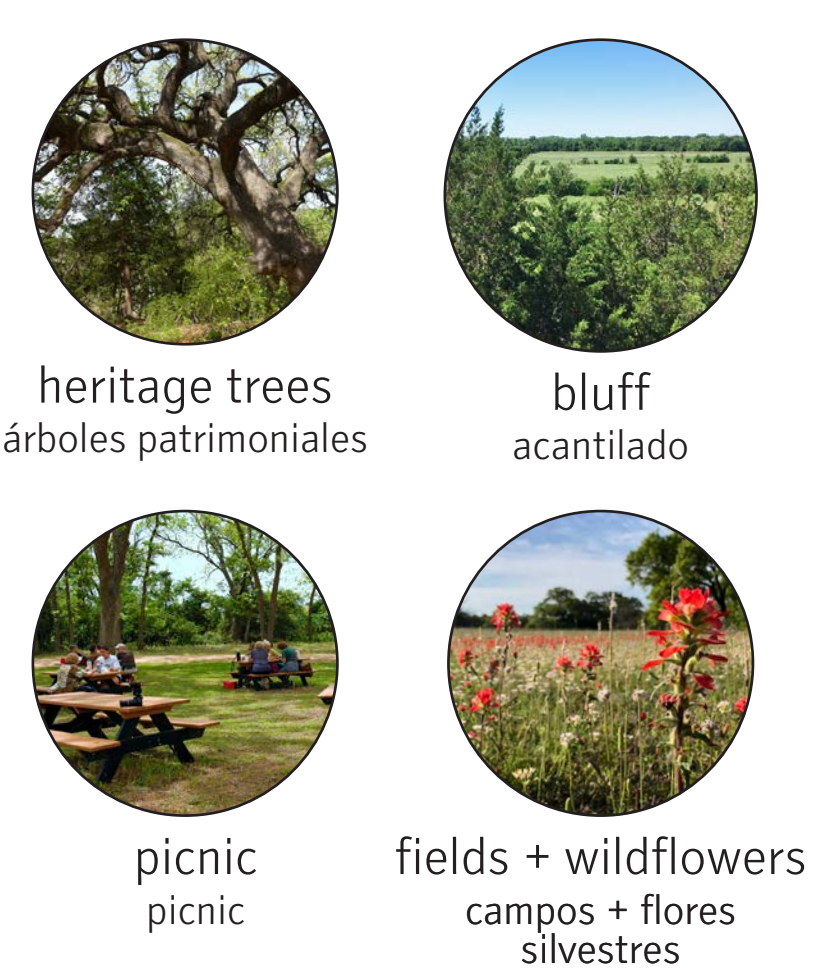
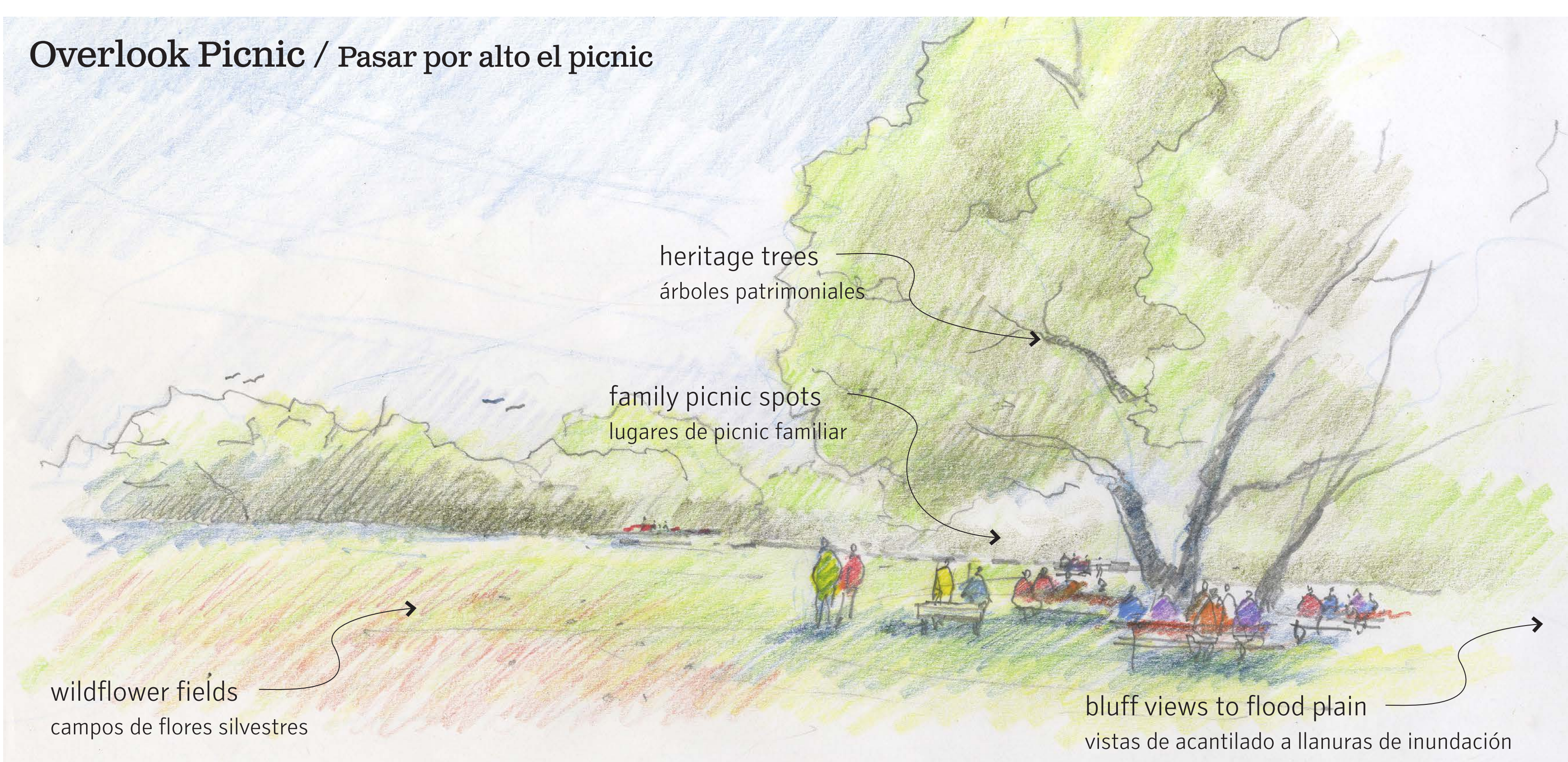
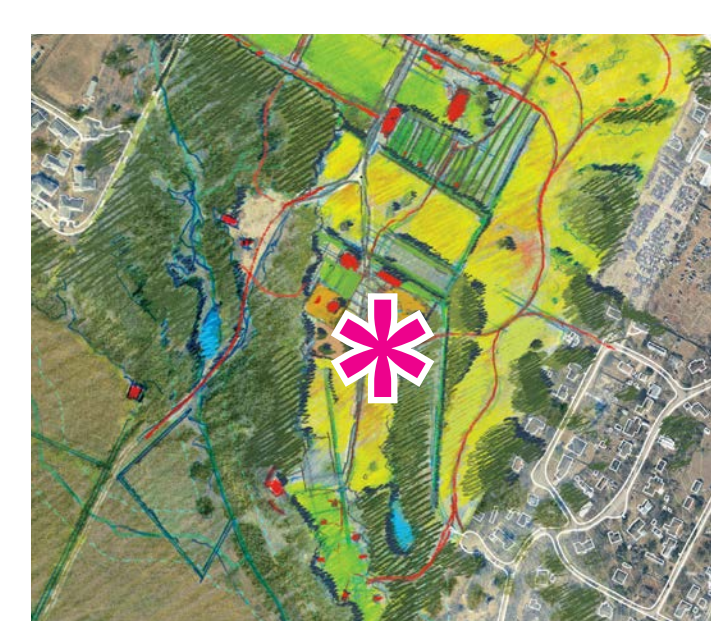
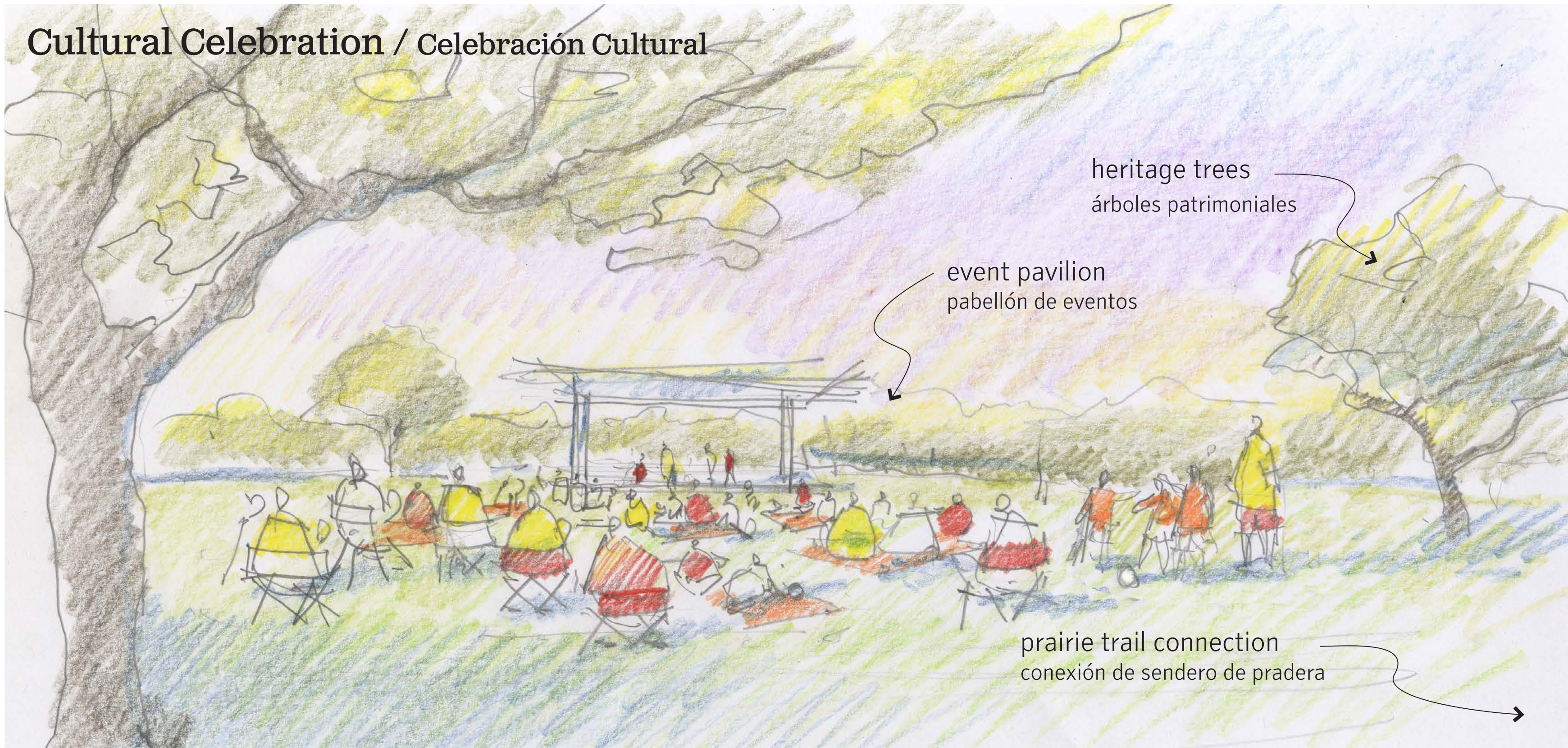
John Treviño Jr. Metropolitan Park at Morrison Ranch

Community Meeting #3 / Junta Comunitaria #3
www.Austintexas.gov/JohnTrevinoMetroPark



B Prairie: Town

Pradera: Pueblito



John Treviño Jr. Metropolitan Park at Morrison Ranch

Community Meeting #3 / Junta Comunitaria #3
www.Austintexas.gov/JohnTrevinoMetroPark



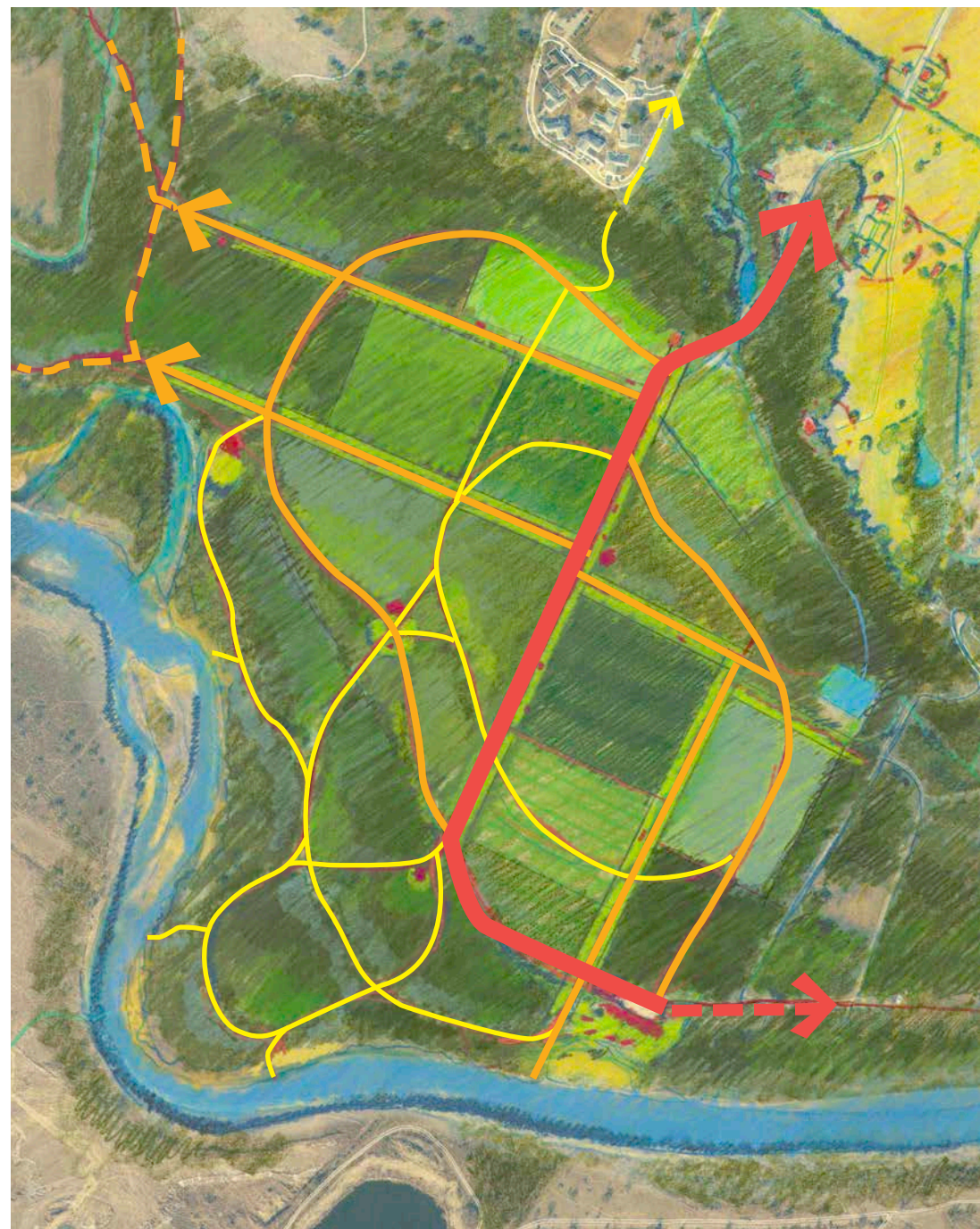


River: Forest Fields

Río: Campos Forestales

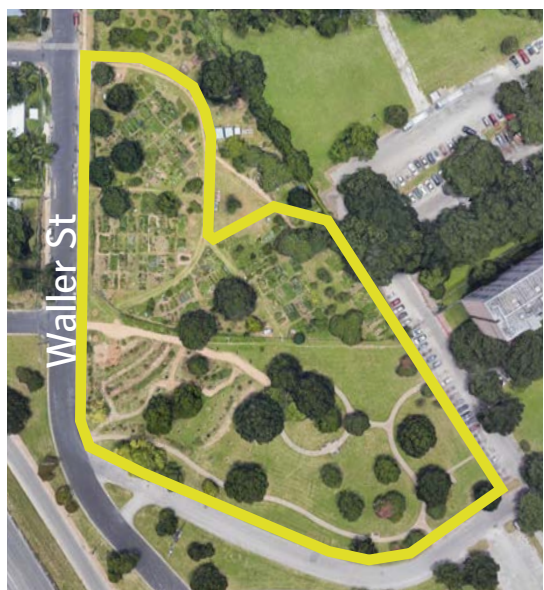
Description / Descripción

- Varied forested patchwork
Bosque variado en retazos
- Perimeter access
Acceso perimetral
- Focus on pedestrian and bike access at flood plain level
Centrarse en el acceso de peatones y bicicletas a nivel de la llanura



Access and Trails / Acceso y senderos

- potential vehicular + multi-use
- multi-use
- hiking



360'x210'

Soccer Field (1.7 acres)
Cancha de Fútbol

2 acres

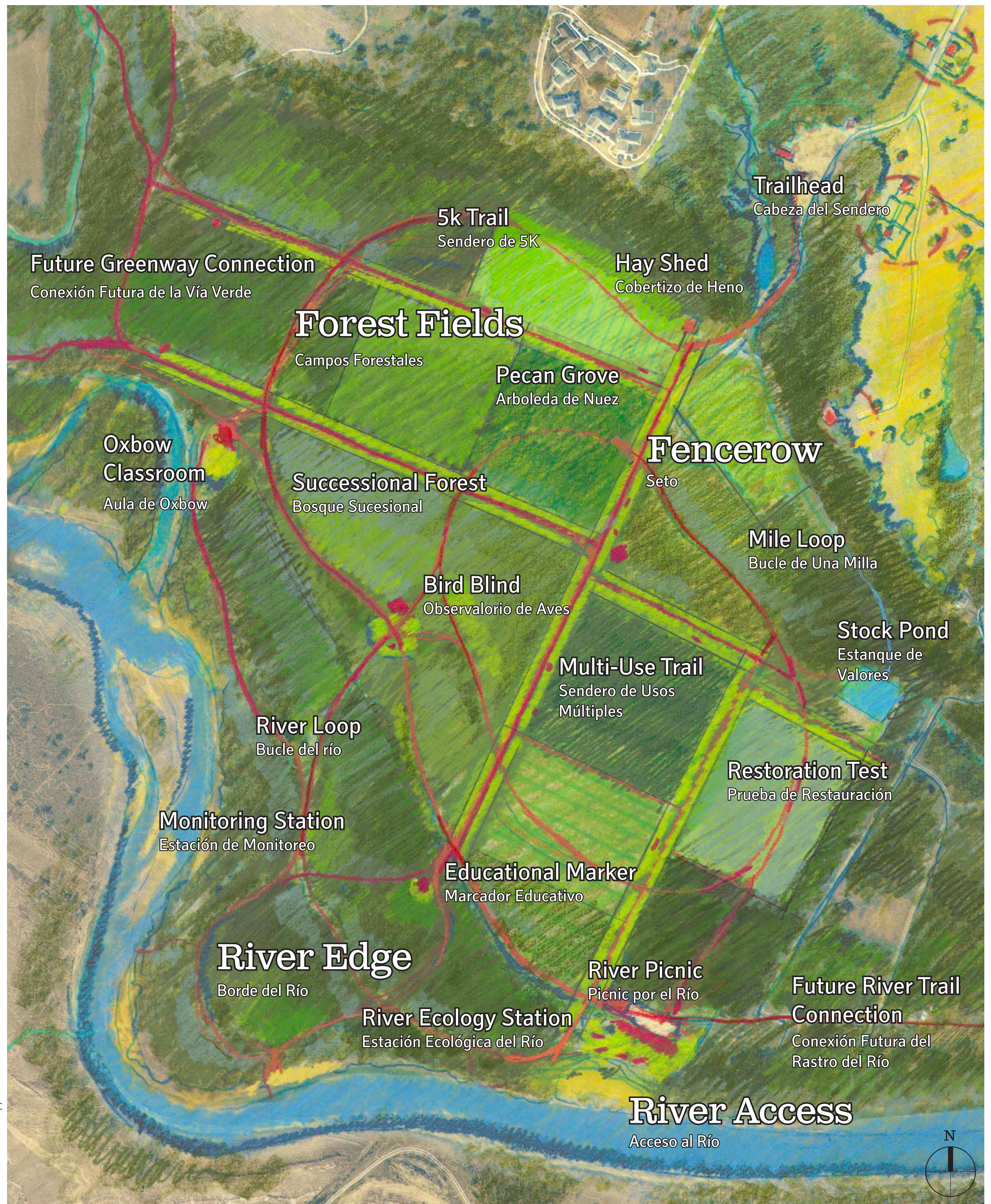
Festival Beach Community Gardens + Food Forest
Jardines Comunitarios en Festival Beach + Bosque de Alimentos



picnic area /
área de picnic

Festival Beach Boat Launch
Lanzamiento de Barcos en Festival Beach

Scale Comparisons
Comparaciones de escala



Site Plan
Plan de Sitio

SCALE/ESCALA : 1" = 250' 0 125 250 500 1000 FEET/PIES

Share your thoughts / Comparta sus pensamientos

Place a green sticker on things you like, or write a note with your comments
Coloque una pegatina verde en las cosas que le gustan o agregue una nota adhesiva con sus comentarios

John Treviño Jr. Metropolitan Park at Morrison Ranch

Community Meeting #3 / Junta Comunitaria #3
www.Austintexas.gov/JohnTrevinoMetroPark



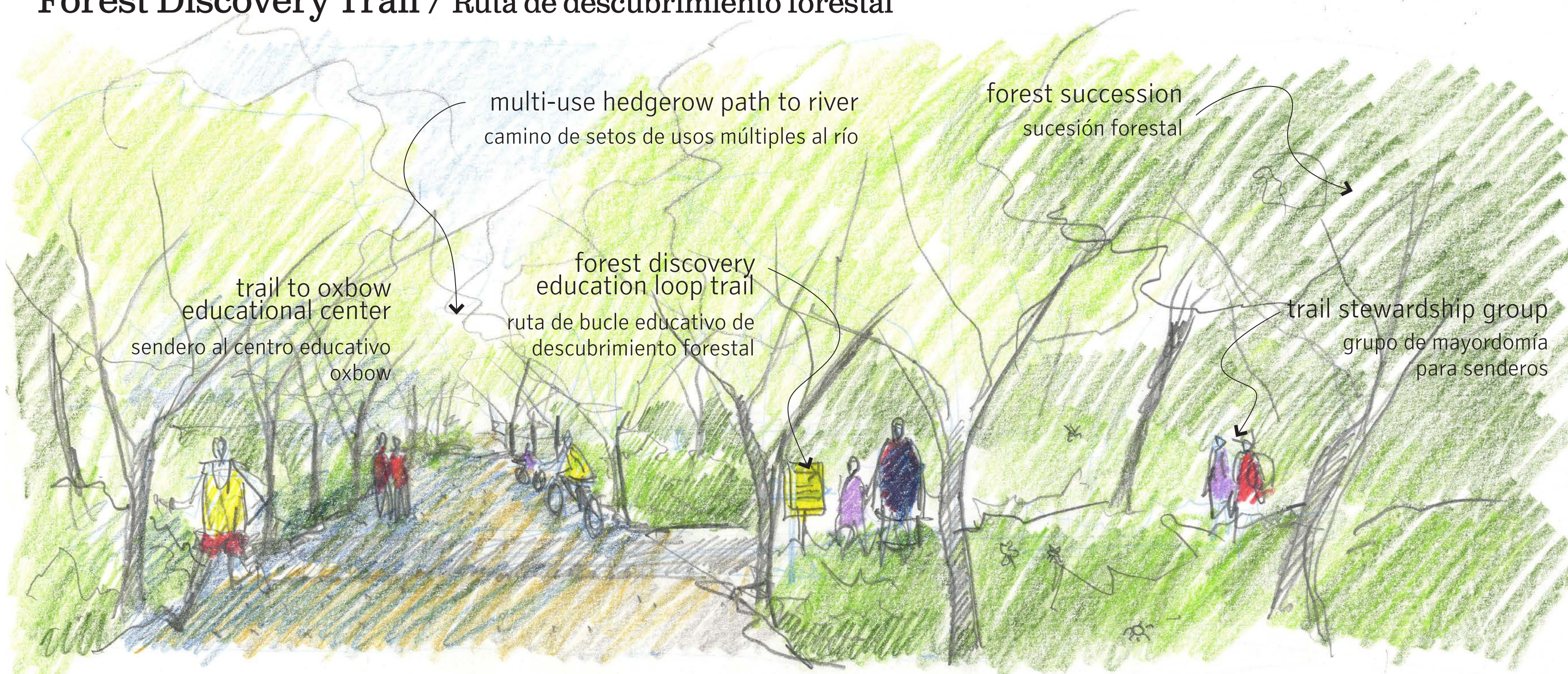
GGN



River: Forest Fields

Río: Campos Forestales

Forest Discovery Trail / Ruta de descubrimiento forestal



volunteer
ofrecerse de voluntario



be active
ser activo



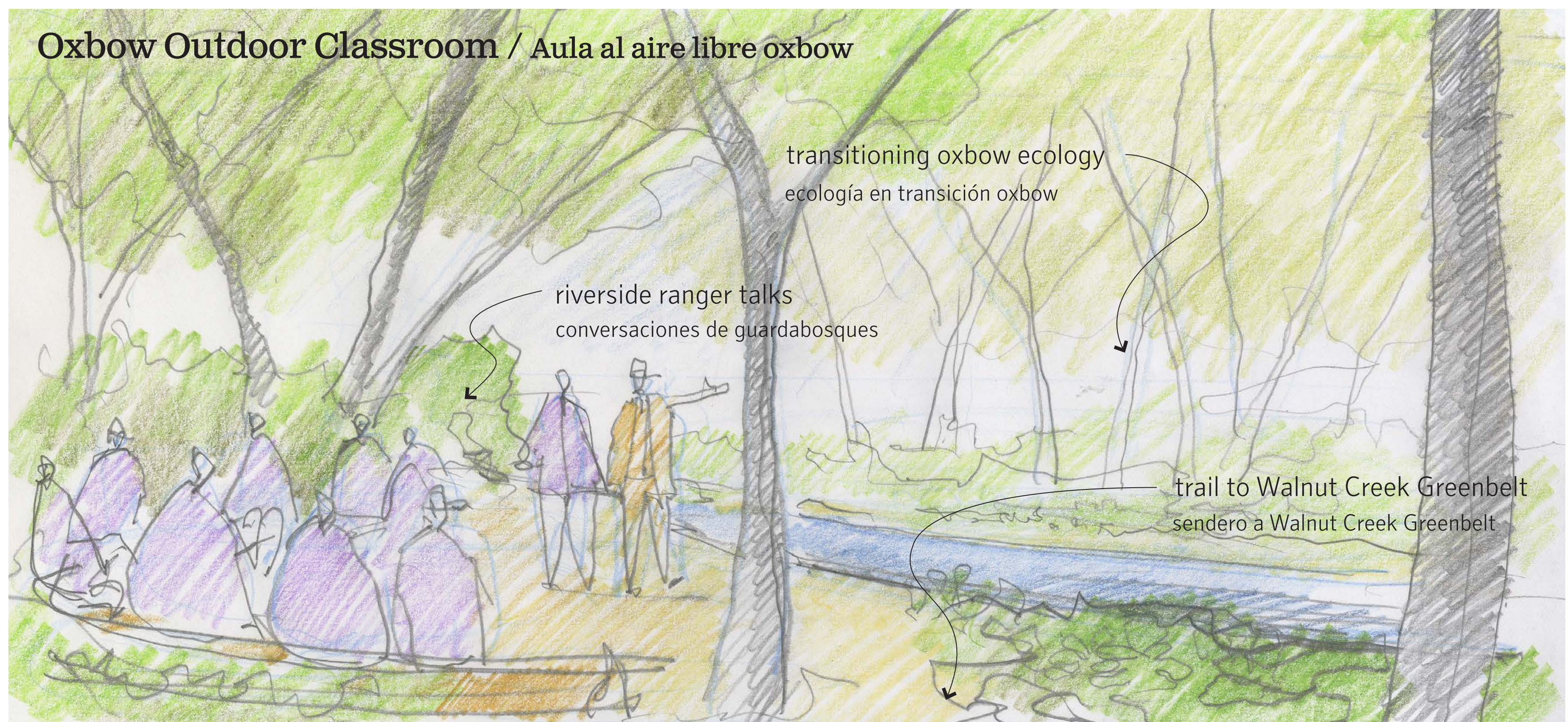
forest
bosque



walk or bike
caminar o andar en
bicicleta



Oxbow Outdoor Classroom / Aula al aire libre oxbow



river oxbow
río oxbow



learn about this place
aprender sobre este lugar



river
río



forest
bosque



Boat Launch and Fishing Pier / Lanzamiento de embarcaciones y muelle de pesca



river
río



fish
pescar



picnic
picnic



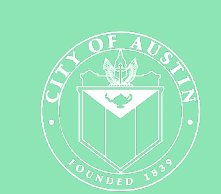
be with family
estar con la familia



John Treviño Jr. Metropolitan Park at Morrison Ranch

Community Meeting #3 / Junta Comunitaria #3

www.Austintexas.gov/JohnTrevinoMetroPark



GGN



River: Clearing

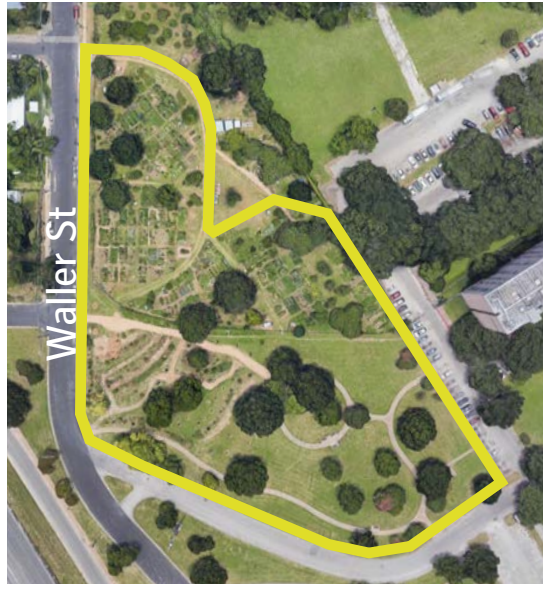
Río: Área Despejada

Description / Descripción

- Central open field
Campo abierto central
- Central vehicle access to river
Acceso central del vehículo al río
- Potential for informal play fields or agriculture in floodplain
Potencial para campos de juego informales o agricultura en llanuras de inundación



Access and Trails / Acceso y senderos
 — potential vehicular + multi-use
 — multi-use
 — hiking



360'x210'
 Soccer Field (1.7 acres)
 Cancha de Fútbol
 2 acres

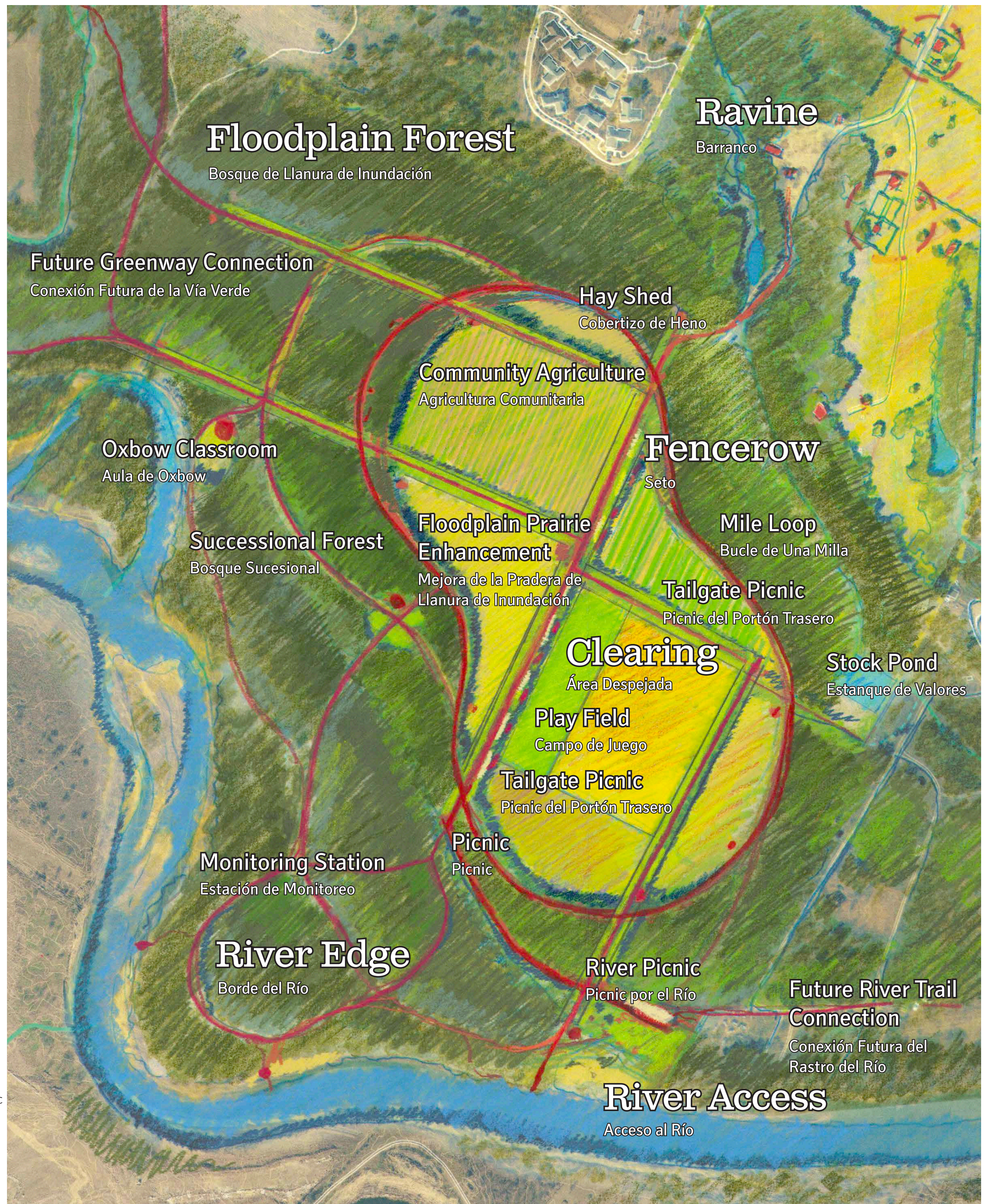
Festival Beach Community Gardens + Food Forest
 Jardines Comunitarios en Festival Beach + Bosque de Alimentos



picnic area /
 área de picnic

Festival Beach Boat Launch
 Lanzamiento de Barcos en Festival Beach

Scale Comparisons
 Comparaciones de escala



Site Plan / Plan de Sitio

SCALE/ESCALA : 1" = 250' 0 125 250 500 1000 FEET/PIES

Share your thoughts / Comparta sus pensamientos

Place a green sticker on things you like, or write a note with your comments
 Coloque una pegatina verde en las cosas que le gustan o agregue una nota adhesiva con sus comentarios

John Treviño Jr. Metropolitan Park at Morrison Ranch

Community Meeting #3 / Junta Comunitaria #3
www.Austintexas.gov/JohnTrevinoMetroPark



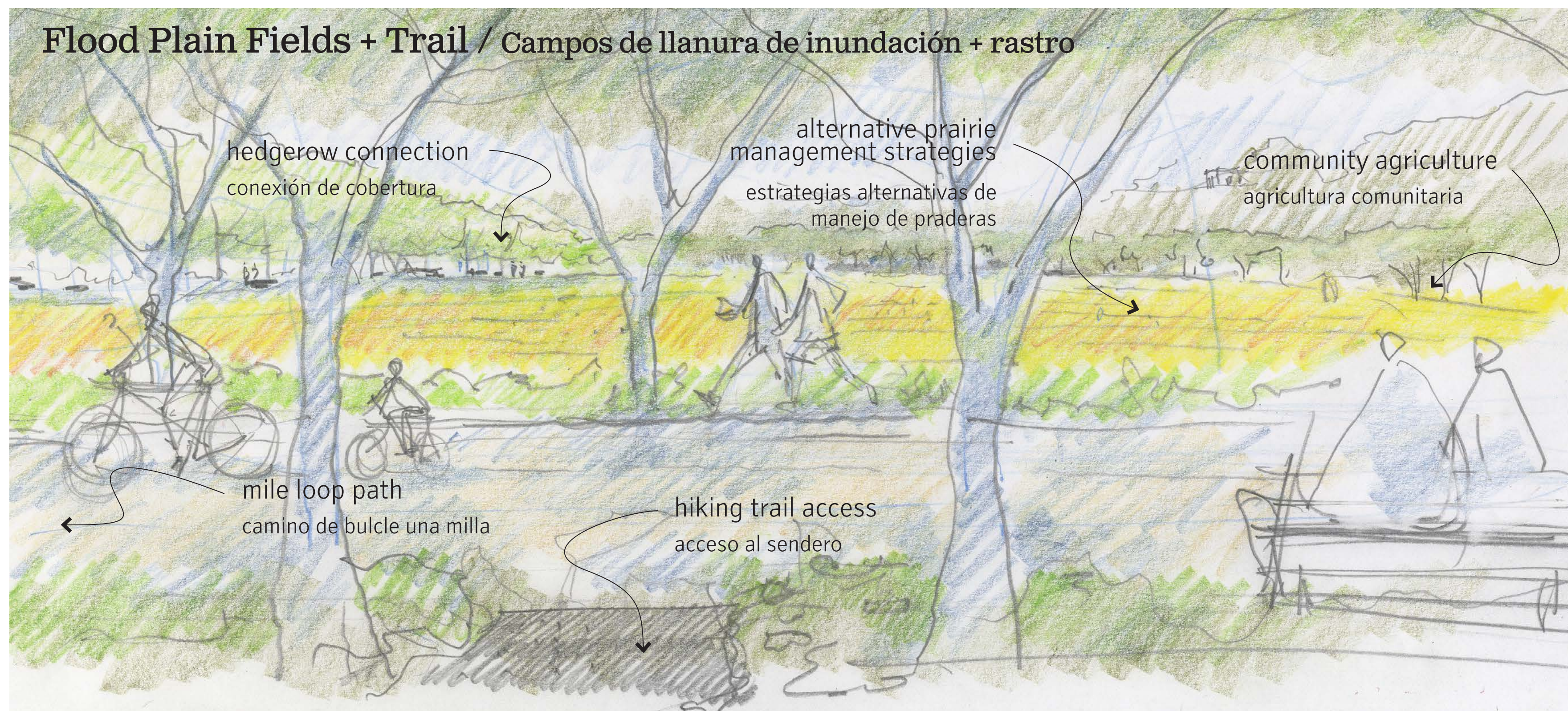
GGN



River: Clearing

Río: Área Despejada

Flood Plain Fields + Trail / Campos de llanura de inundación + rastro



fields + wildflowers
campos + flores silvestres



walk or bike
caminar o andar en bicicleta



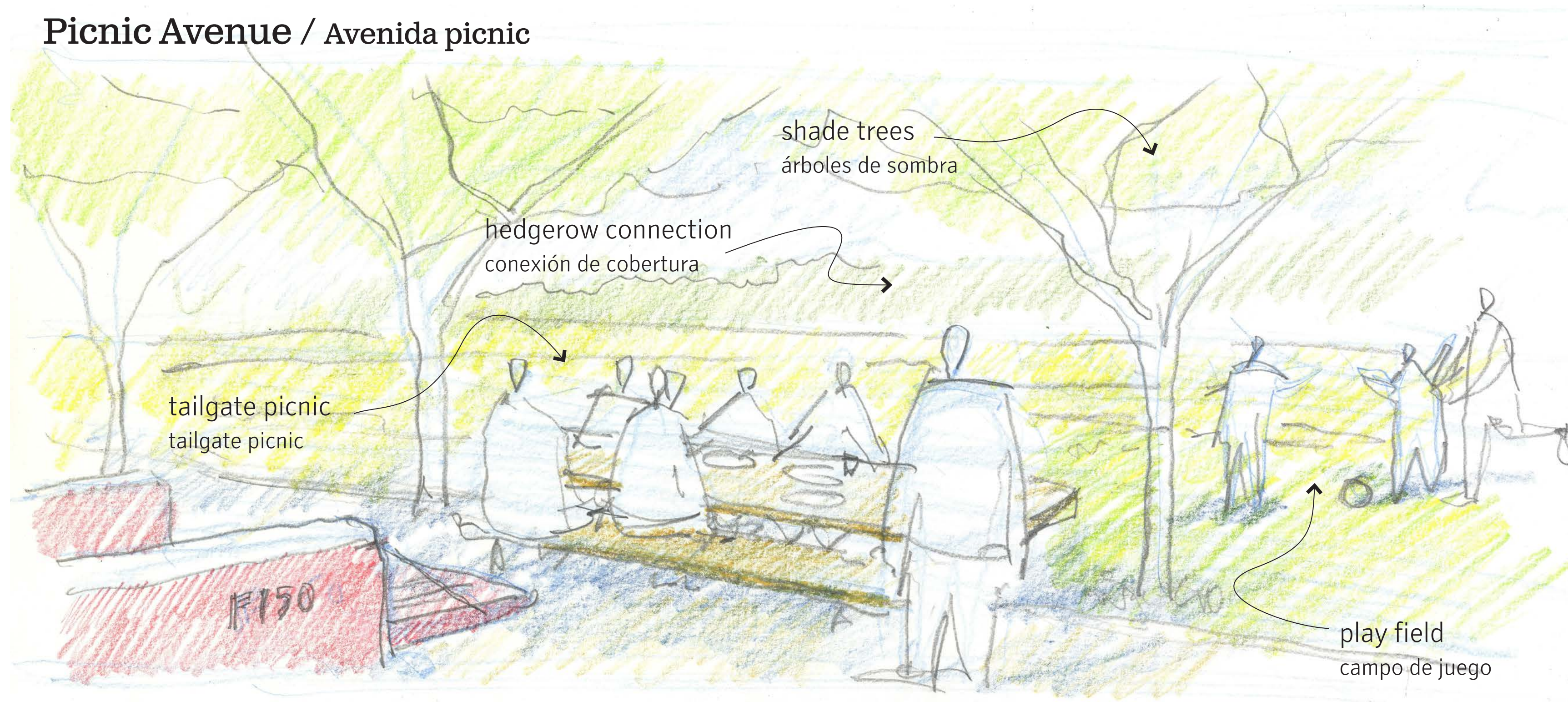
flood plain fields
campos de llanura de inundación



be active
ser activo



Picnic Avenue / Avenida picnic



be with family
estar con la familia



picnic
picnic



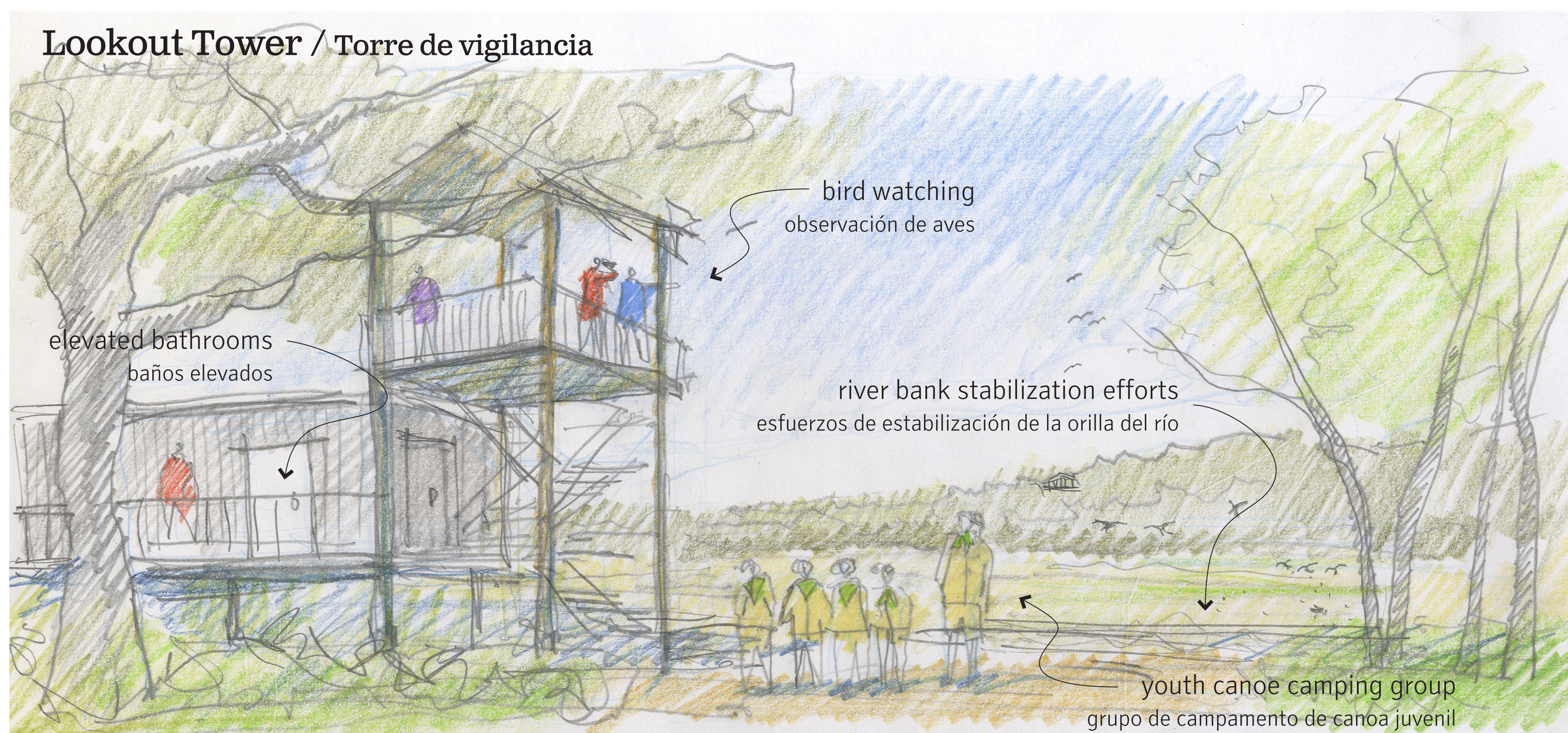
play or watch sports
jugar o mirar un deporte



heritage trees
árboles patrimoniales



Lookout Tower / Torre de vigilancia



river
río



learn about this place
aprender sobre este lugar



volunteer
ofrecerse de voluntario



forest
bosque



John Treviño Jr. Metropolitan Park at Morrison Ranch

Community Meeting #3 / Junta Comunitaria #3

www.Austintexas.gov/JohnTrevinoMetroPark



GGN