



Nash Hernandez Building at Edward Rendon Sr. Park at Festival Beach Holly Shores

November 21, 2019



Recent History

- ❑ 2011 MEMORANDUM OF UNDERSTANDING (MOU) was established September 2011
 - ❑ Formed a partnership between the PARD Park Ranger Unit and Austin Police Department (APD) Park Patrol Unit and formalized an agreement to develop a Joint-Use Facility as part of a future Bond program
- ❑ 2011 Representatives from PARD and APD collaborated to determine a program and site for the Joint-Use Facility
- ❑ 2012 Nash Hernandez Building Assessment
 - ❑ PARD 2006 Bond
 - ❑ Building Assessment and early design based on PARD office needs
 - ❑ Necessary abatement of building to prepare for construction completed

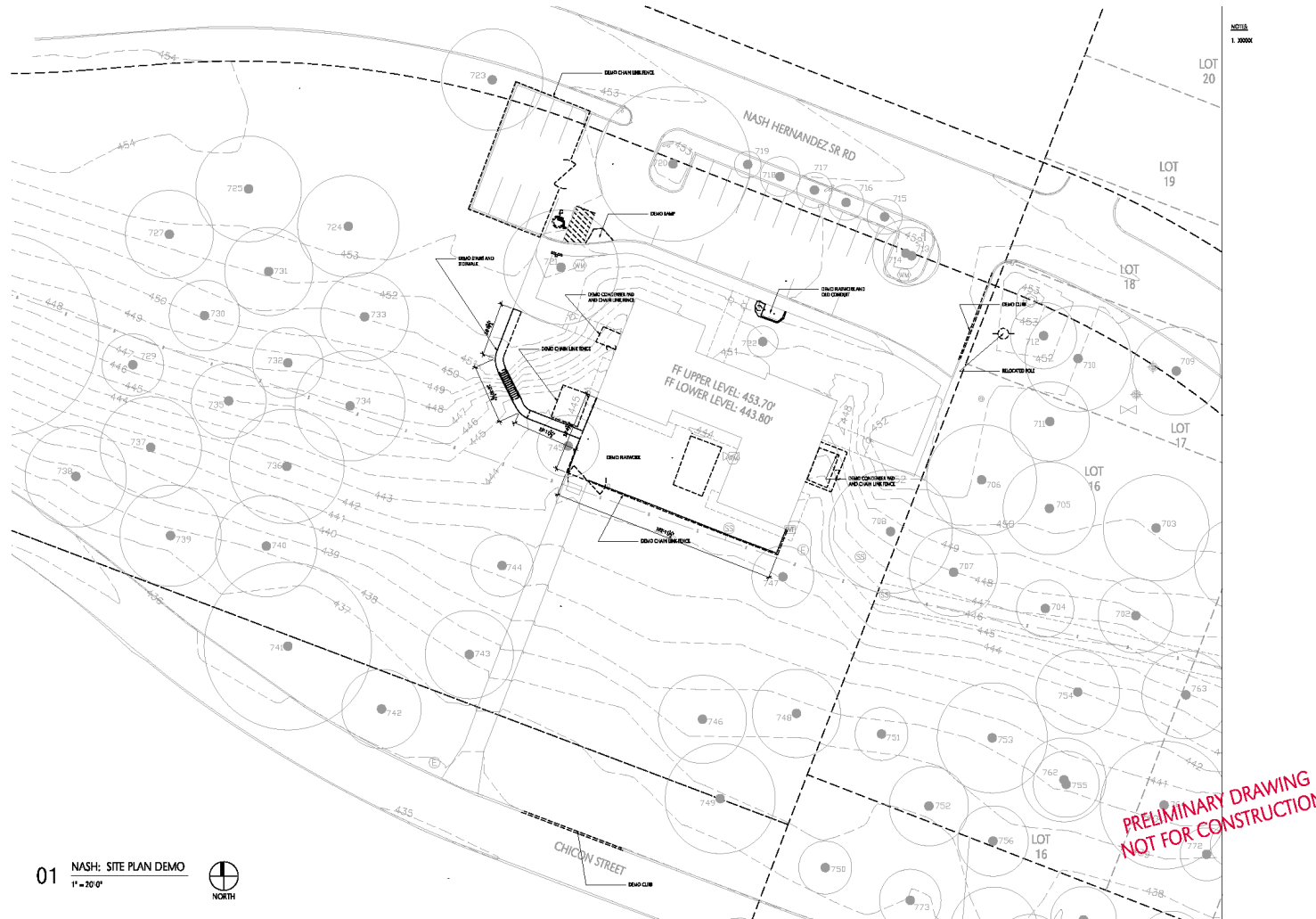


Recent History Cont. :

- ❑ 2014 Project Charter established between the Park Rangers and the Park Patrol Units
- ❑ 2018 Strong Community input rejects proposed Joint Use Facility APD and PARD



Nash Hernandez Existing Conditions



COTERA+REED ARCHITECTS
 812 SAN ANTONIO ST SUITE 406
 AUSTIN, TEXAS 78701
 1.512.477.3300

FILE NO: 18115

REVISION / ADDRESS

DATE BY

PARK PATROL / RANGERS J.U. FACILITY
 CLIENT: CITY OF AUSTIN, DEPARTMENT OF PARKS AND RECREATION
 1803
SCHEMATIC DESIGN

SITE PLAN
 DEMO
A001

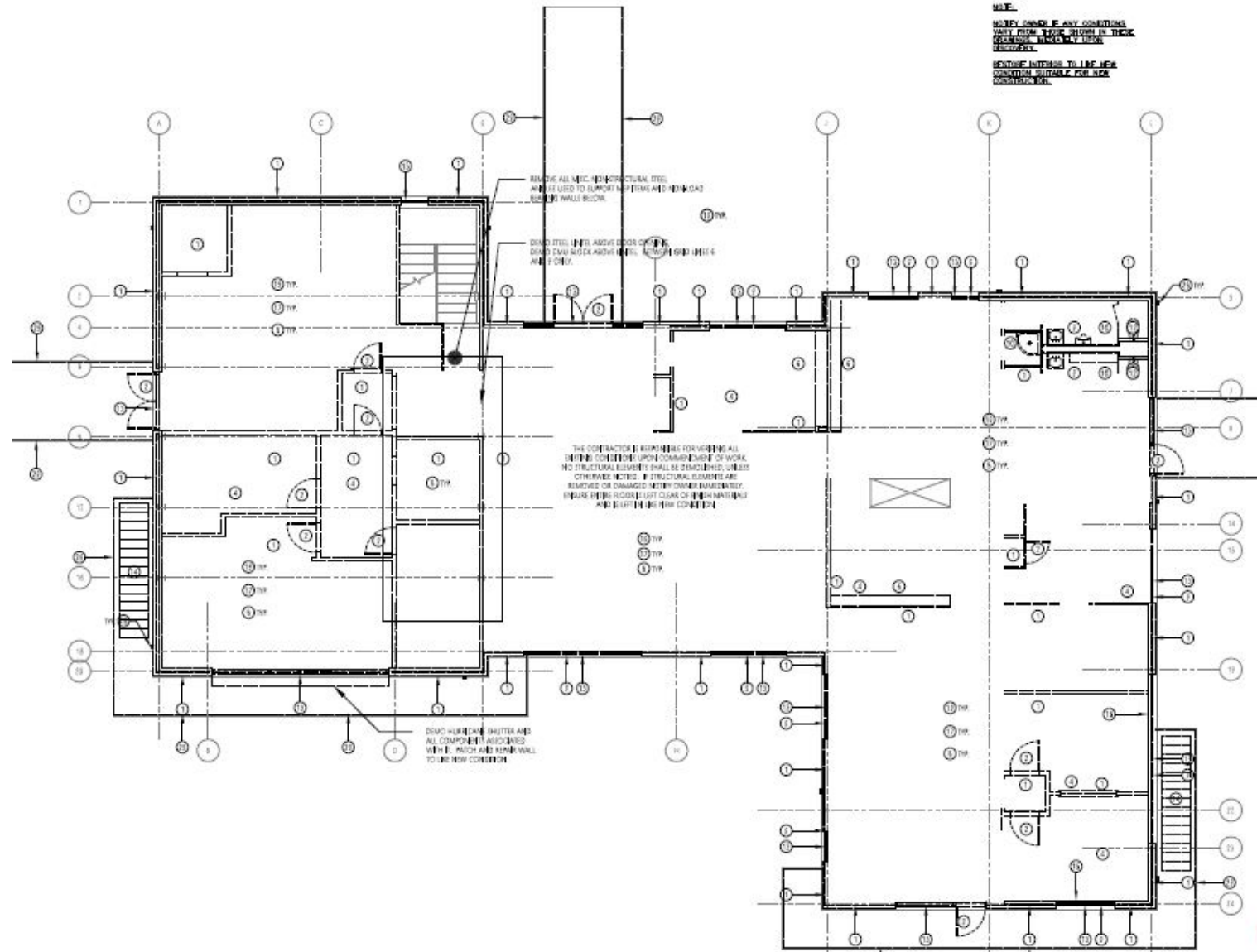
- Two floors
- Lower Level 4,756 sq. ft.
- Upper Level 4,943 sq. ft.
 - Total Sq. Ft. 9,699

Lead and Asbestos remediation completed

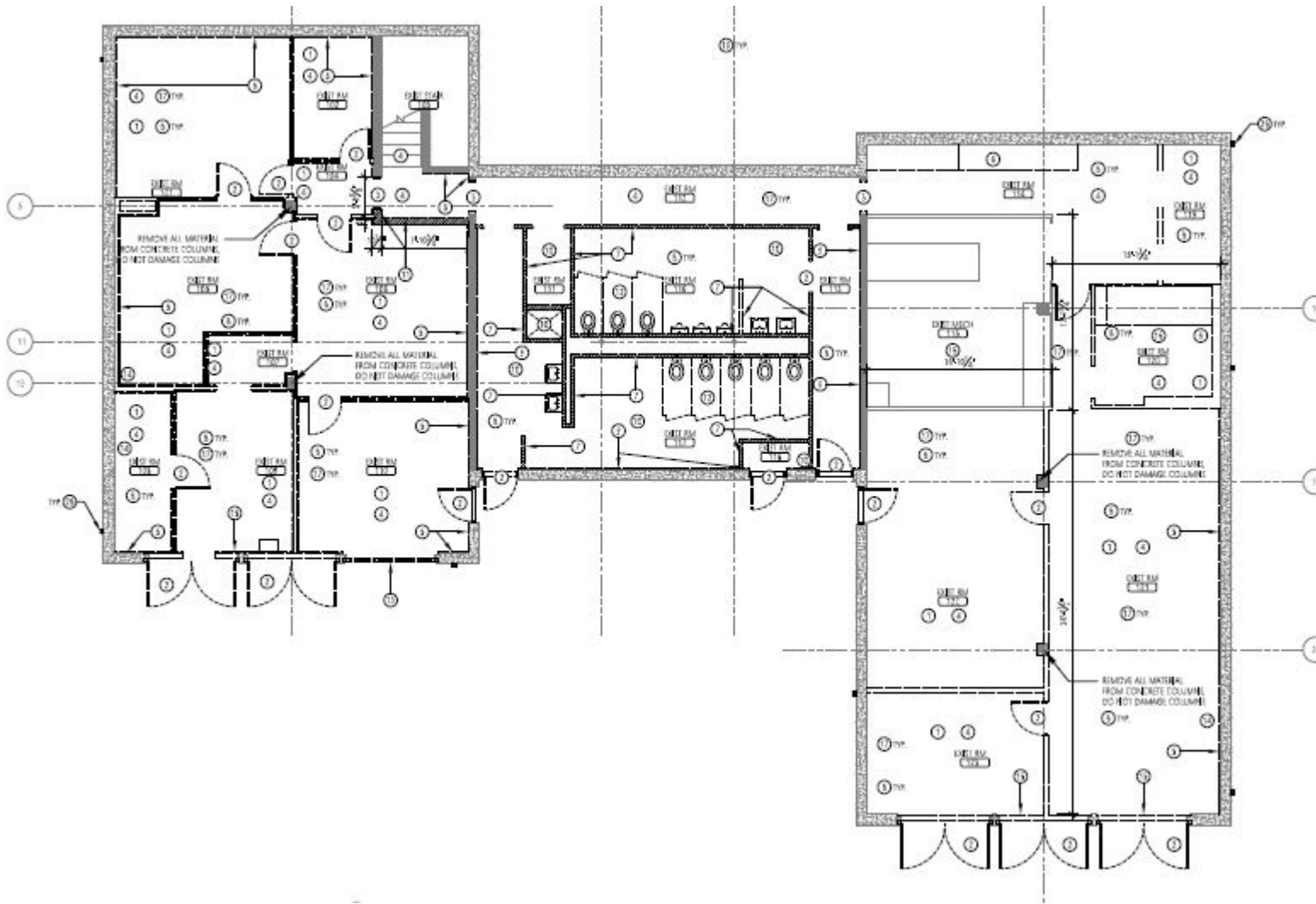
Roof repairs completed
 Summer of 2018



Nash Entry Floor:



Nash Bottom Floor:



Holly Shores / Edward Rendon Sr. at Festival Beach Master Plan Recommendations for the Nash Hernandez Building –

“The shared community spaces might include: a community meeting and dining space; a commercial learning demonstration kitchen that can be a center for learning healthy meal preparation, publicly-accessible rest rooms and healthy food and drink vending. This program could be linked to community permaculture and “food Forest” areas in the western part of the park between the RBJ Center and I35, adjacent to the existing community gardens. These sustainably planted areas would be integrated into the overall pastoral landscape of the west park” pg. 81



Nash Hernandez Building

Architectural Programming:

- *Potential PARD Aquatic Division location*
- *Potential non-profit space*
- *Potential community space*

Community Input:

- *Community Meeting Feedback Form*
- *Community Comment Display Board*
- *Online at www.publicinput.com/6064*





Thank you for Attending

Additional Questions :

Ricardo Soliz, Ricardo.Soliz@austintexas.gov

Reynaldo Hernandez PLA, Reynaldo.Hernandez@austintexas.gov

