



---

# Georgian Acres Neighborhood Park

---

Concept Presentation

Parks and Recreation Department

D'Anne Williams, Design and Development

November 2, 2016



# Introduction



## City Staff

- D'Anne Williams, Landscape Architect, Parks and Recreation Department
- Cara Welch, Public Information Office, Parks and Recreation Department
- Braden Latham-Jones, Outreach Director, Office of Council Member Greg Casar

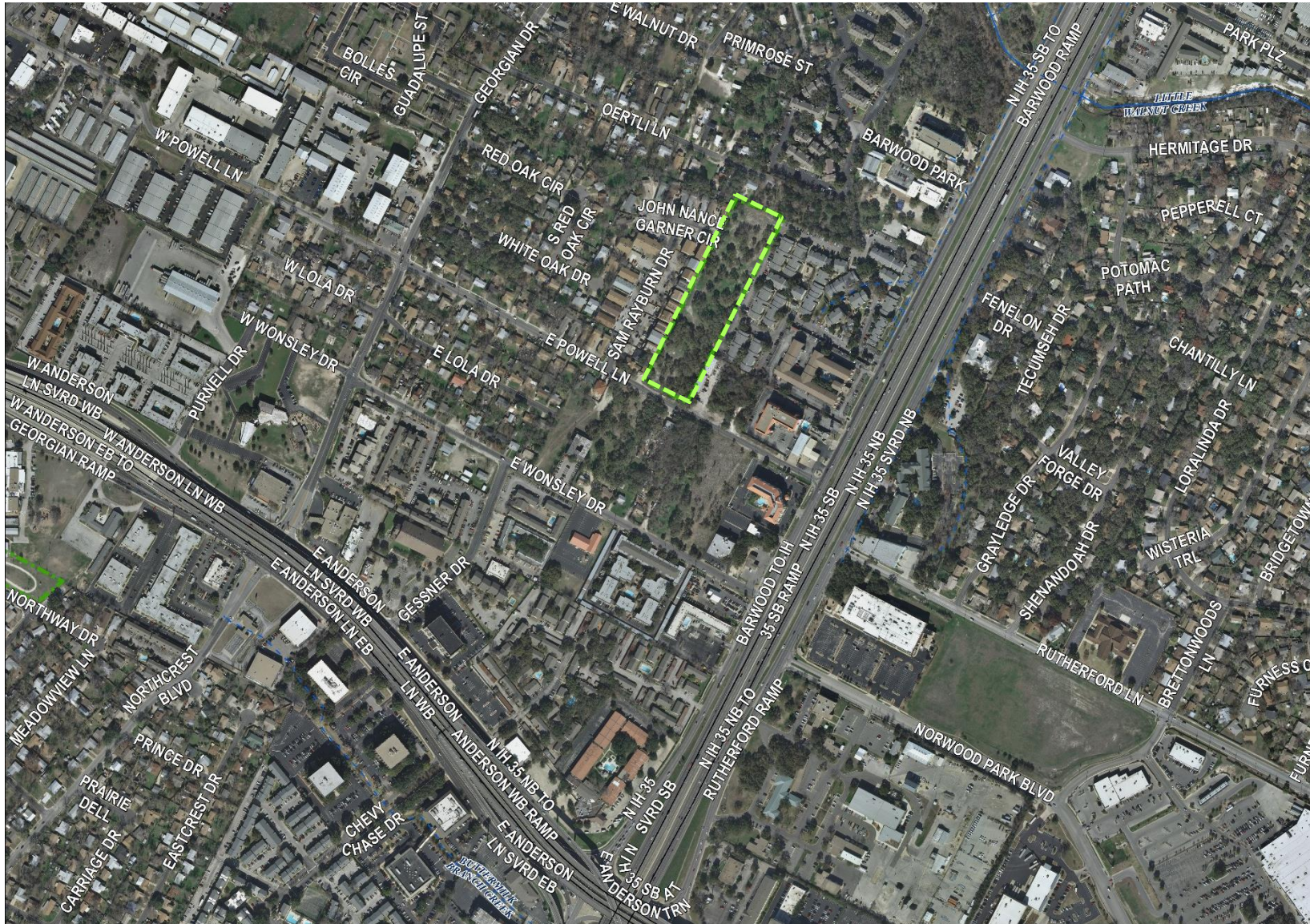
## Agenda for Meeting

- Introduction to the Park
- Public Outreach to date
- What we heard
- Concept Plans
- Park Feature Options
- Next Steps
- Question and Answers
- Concept stations small group discussions





# Georgian Acres Neighborhood Park





# Georgian Acres Neighborhood Park





# Public Outreach



## “Walk the Block” Surveys

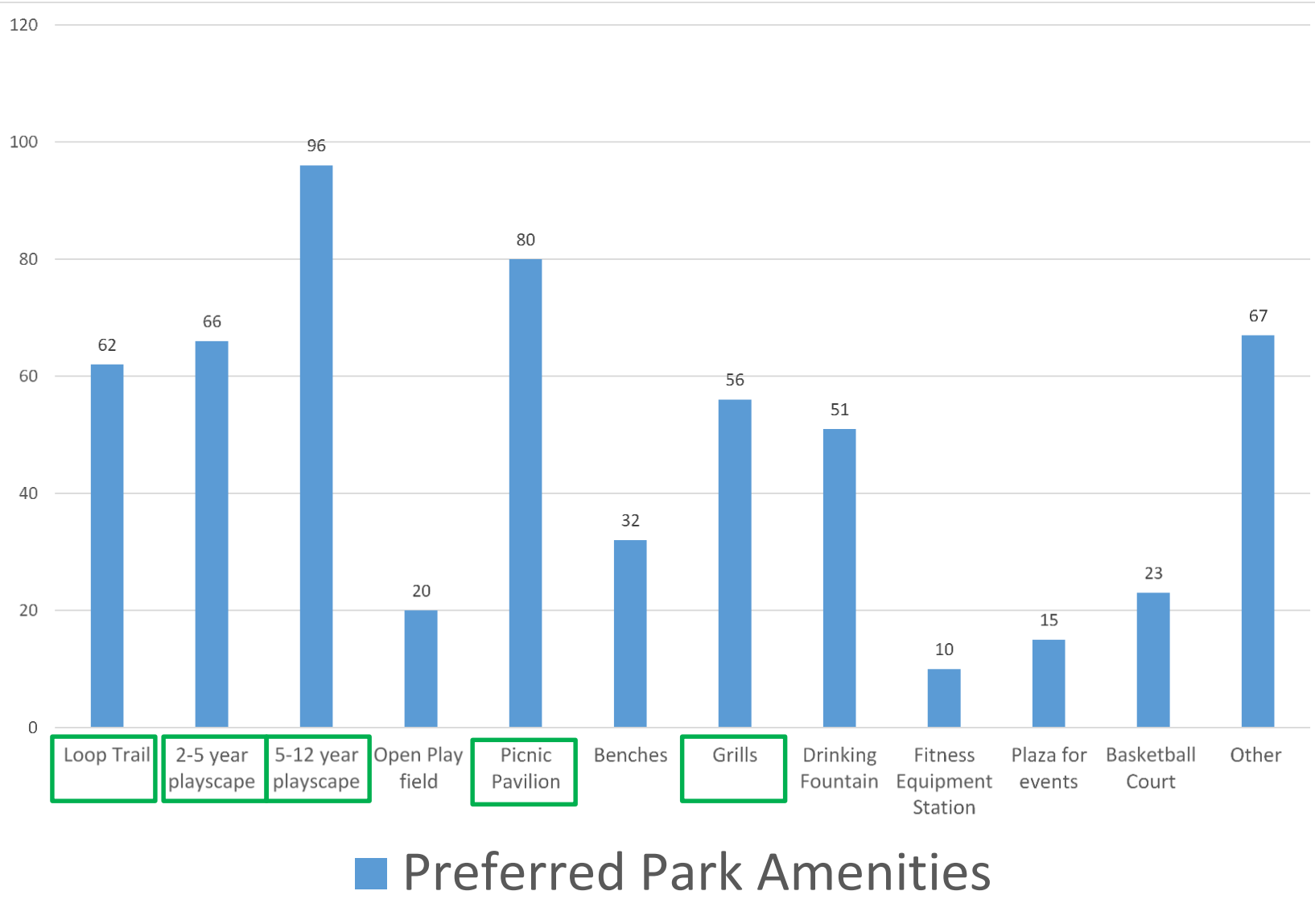


## Community Engagement Sessions





# What We Heard



# Neighborhood Park Design

## Features not include:

- Parking Lots
- Restrooms
- Pools

## Typical Features:

- Playscapes
- Trails
- Picnic Tables/Pavilions
- Benches
- Basketball/Tennis Courts/  
Volleyball
- Open Play area



## Restrictions:

- Trees
- Utility Access
- Park Rules



# Crime Prevention Through Environmental Design (CPTED)



The concept of creating an environment that results in a reduction in crime by using both physical and psychological elements.

## *Physical:*

- Create a defensible space by using barriers to define a place. Barriers can be man made or natural to defines a boundary but should not provide hiding spaces.
- Lighting – Lighting is a proven crime deterrent when used affectively but can also be a draw to a place giving the sense of invitation.
- Landscaping - Can be used as a symbolic barrier. Keeping views open is key.

## *Psychological:*

- Territoriality – the feeling of control, pride and ownership.
- Informal surveillance – People feel safer when they can see and be seen.
- Landscaping – An attractive place generates a sense of pride and ownership.



# Concept A

## Main Features:

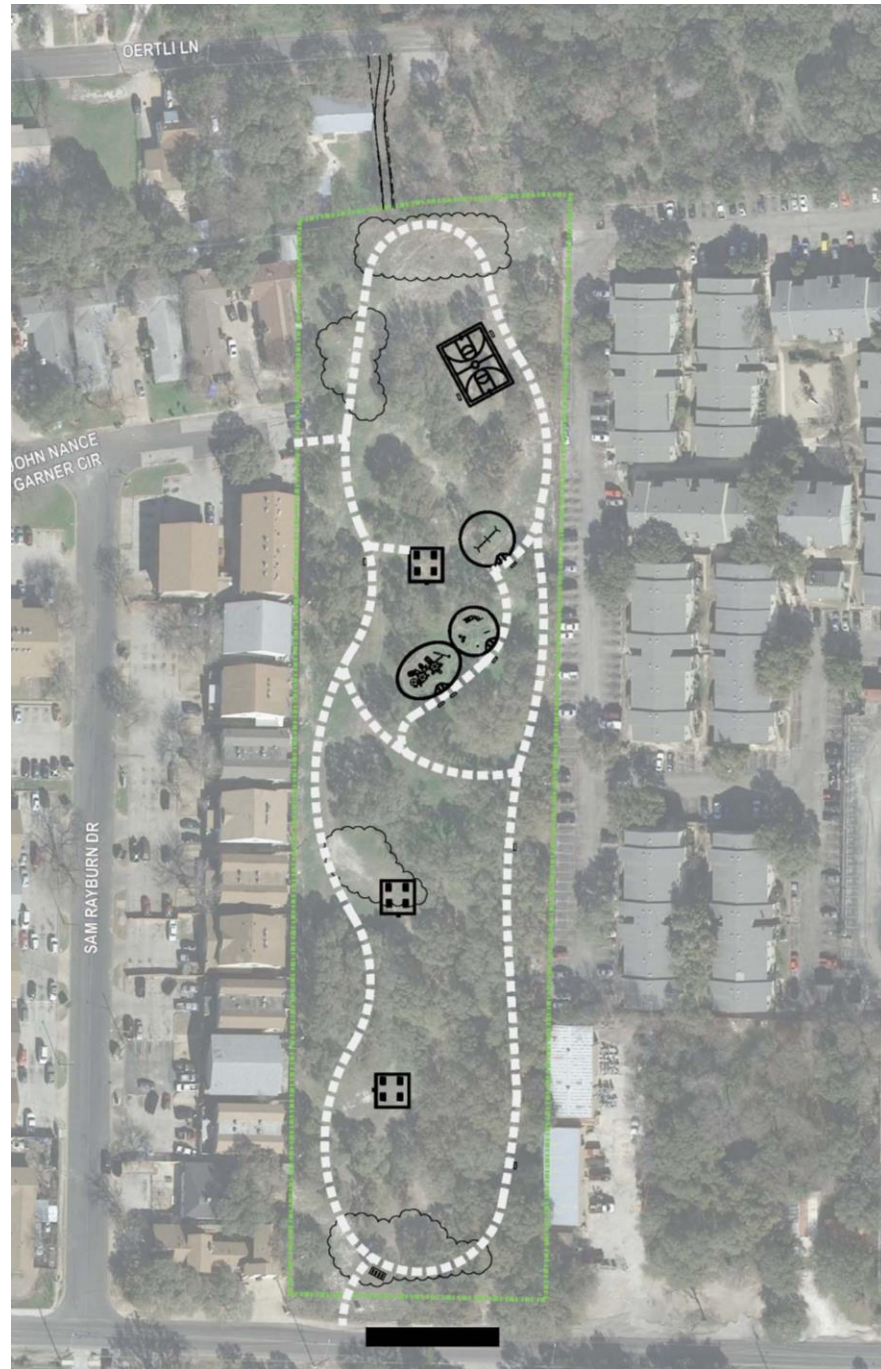
- 5-12 year old playscape
- Tot playscapes
- Swing Set
- Perimeter Trail
- Large Pavilion with 9 picnic tables and 2 grills
- Picnic Tables on pads with grills
- Benches along trail and at the playscapes
- Bike racks at 2 entrances
- Basketball Court
- Wildflower Meadows



# Concept B

## Main Features:

- 5-12 year old playscape
- Tot playscapes
- Swing Set
- Perimeter Trail
- 3 Medium sized Pavilions with 4 picnic tables each and grills
- Cross Trail to provide 2 loops in the perimeter trail
- Benches along trail and at the playscapes
- Bike racks at south entrance
- Basketball Court
- Wildflower Meadows





# Concept C

## Main Features:

- 5-12 year old playscape
- Tot playscapes
- Swing Set
- Perimeter Trail
- Large Basketball Court with Cover to act as multiple use space
- Movable picnic tables and grills at 3 locations
- Picnic Tables on pads with grills
- Benches along trail and at the playscapes
- Bike racks at south entrance
- Wildflower Meadows





# Playscapes





# Pavilions





# Park Amenities





# Programming

## Potential Park Activities

- Food Market
- Movies in the Park
- Group Fitness



- Festival Celebrations
- Temporary Art
- Walk with the Doc



# Estimates of Probable Cost

Engineering/Permit Drawings	\$60,000
Environmental controls/staging	\$8000
Playscapes with curbs & ramps	\$190,000
Perimeter Trail	\$55,000
Large Pavilion	\$95,000
3 Medium Pavilions	\$120,000 (\$40,000 each)
Large Multi-use Space	\$80,000
Picnic Tables on Concrete Pads	\$1200 each
Water Fountain with pet bowl	\$3800 each
Water Meter and supply	\$15,000
Electric Meter, Conduit and wiring	\$10,000
Security Lights	\$3000 each
Bike Racks (4 on pad)	\$750
Benches	\$450 each







# Next Steps

## Estimated Schedule

- |                                   |                             |
|-----------------------------------|-----------------------------|
| ❑ Land Survey                     | November 2016               |
| ❑ Revise Plan for Final Concept   | December 2016- January 2017 |
| ❑ Engineered Drawings and Permits | January -November 2017      |
| ❑ Prepare Bidding Documents       | November 2017-January 2018  |
| ❑ Bidding and Contracts           | January – March 2018        |
| ❑ Construction                    | April – Oct/Nov. 2018       |
| ❑ Grand Opening!                  |                             |

## Questions?

### Contact Information

D'Anne Williams 512-974-9456

[GeorgianAcres@austintexas.gov](mailto:GeorgianAcres@austintexas.gov)

# Thank you!

