



DUNCAN PARK_preliminary plan

2017 / 05 / 16

DESIGN TEAM



TABLE OF CONTENTS

- Preliminary Plan Narrative
- Context Analysis
- Site Analysis
- Visioning Workshop
- Preliminary Plan
- Preliminary Plan & Concept Development
- Precedent Imagery
- Preliminary Plan Workshop
- Appendix



PRELIMINARY PLAN NARRATIVE

The preliminary plan for improvement to Duncan Park is the culmination of thorough site analysis, public input from online surveys from 2015 and 2016, and information gathered at the public engagement meeting held on November 16, 2016. The results of the public engagement effort determined the proposed program for Duncan Park.

The most frequent survey comments included the following:

- preserve and enhance native vegetation
- add more shade
- add a restroom
- improve paths
- provide greater access to the creek
- maintain the existing lawn area
- improve drainage
- add a place for organized play
- provide more picnic tables

The resulting outcome for Duncan Park’s preliminary concept plan focuses on four main components:

- 1) restore drainage patterns
- 2) celebrate native plant communities
- 3) enhance views
- 4) enhance park amenities
- 5) maintain flexible play lawn

In our proposal, an improved drainage feature occurs along the park’s 9th Street edge where stormwater currently ponds for long periods. This area would be excavated to encourage positive drainage. Stormwater would collect in a rain garden and then flow slowly through a bioswale into Shoal Creek. This proposed drainage network slows and cleanses stormwater, and provides an educational component for public viewing.

The proposed drainage design includes re-envisioning the southwest corner of the park to allow for better interaction between park users and the creek. Our proposal also shows Shoal Creek Trail crossing the creek north of 9th Street bridge which is a similar alignment as shown on the current Preliminary Engineering Report for Shoal Creek Trail.

The existing connection under 9th Street to the BMX park is proposed to be removed, however, people can access the BMX park by traveling on a new trail alignment proposed by the Shoal Creek Trail Preliminary Engineering Report, under the bridge on the Shoal Creek Trail and using the ramp to Henderson Street. In addition, street-level pedestrian crossing improvements on 9th Street would provide a safe route to the BMX park while calming traffic on this section of the street.



PRELIMINARY PLAN NARRATIVE

To celebrate native plant communities, vegetated areas surrounding the lawn are seeded with native wildflower and grass mixes that provide additional water quality benefits and food for wildlife. Areas that are currently forested would undergo an invasive plant removal process and be replanted with plants that better complement the ecosystem.

We propose building improved picnic facilities along 10th Street where views of the park and downtown are maximized. As part of the picnic area, a Shoal Creek trailhead is proposed to be situated between the trail and the rest of the picnic area. The trailhead would include a restroom, water fountains, signage and other trailhead amenities.

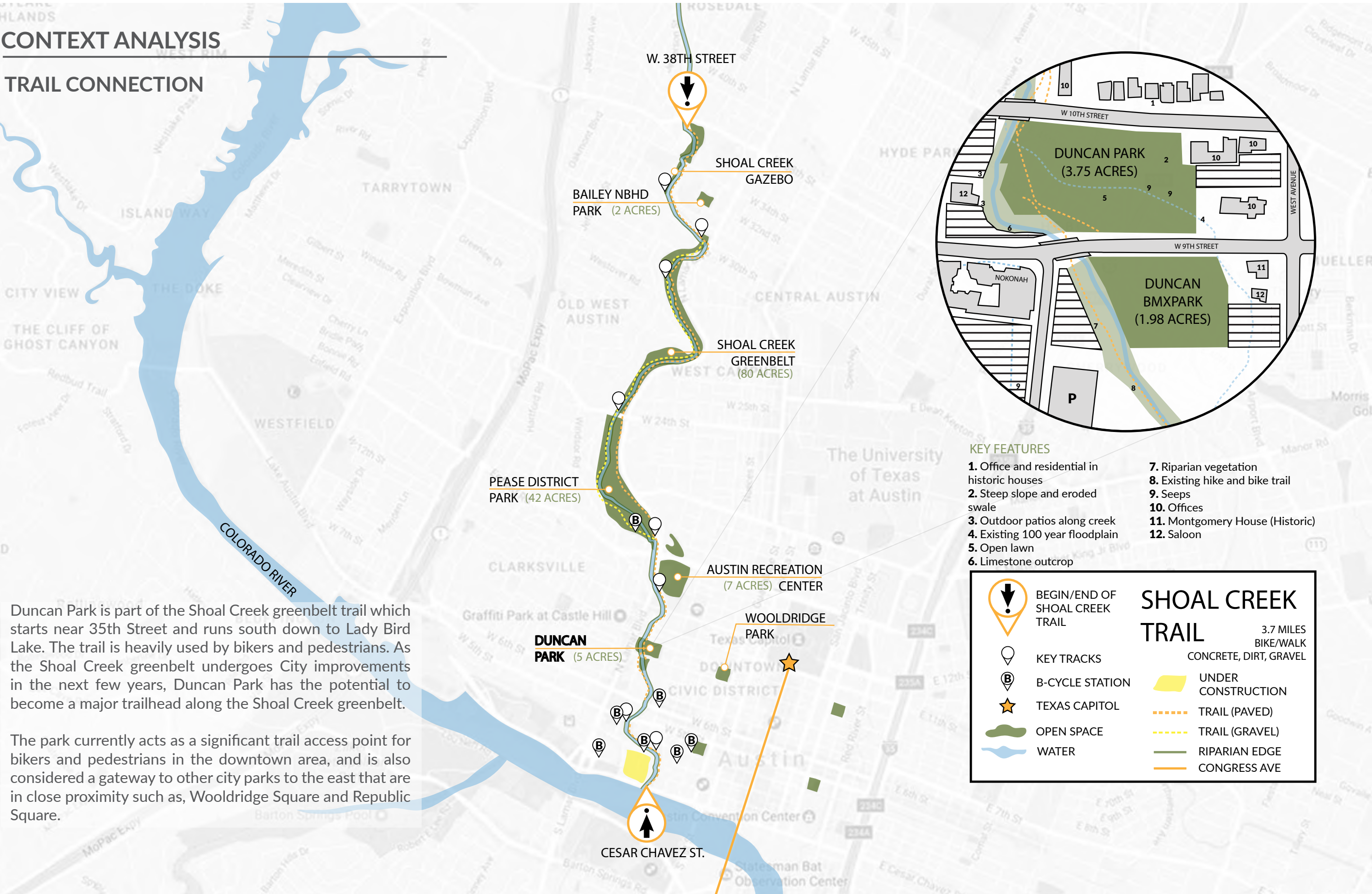
The streetscape along 9th and 10th Street is designed to accommodate the Great Streets Initiative with respect to Duncan Park.

The flex lawn which currently defines Duncan Park is maintained as the largest park feature, keeping the core identity of the park and improving the surrounding edges. Much of the lawn remains open, however new tree plantings along pathways provide needed shade in the park.



CONTEXT ANALYSIS

TRAIL CONNECTION



Duncan Park is part of the Shoal Creek greenbelt trail which starts near 35th Street and runs south down to Lady Bird Lake. The trail is heavily used by bikers and pedestrians. As the Shoal Creek greenbelt undergoes City improvements in the next few years, Duncan Park has the potential to become a major trailhead along the Shoal Creek greenbelt.

The park currently acts as a significant trail access point for bikers and pedestrians in the downtown area, and is also considered a gateway to other city parks to the east that are in close proximity such as, Wooldridge Square and Republic Square.

CONTEXT ANALYSIS

DOWNTOWN PARKS

- DOG PARK
- PLAYGROUND
SPRAY GROUND
- ACTIVE RECREATION:
ACCESS TO HIKE AND BIKE TRAIL
BASKETBALL
VOLLEYBALL
BASEBALL
SOFTBALL
BMX PARK
- LANDMARK
- RECREATION CENTER
AUDITORIUM
- FISHING AND BOAT DOCK
- RESTROOMS

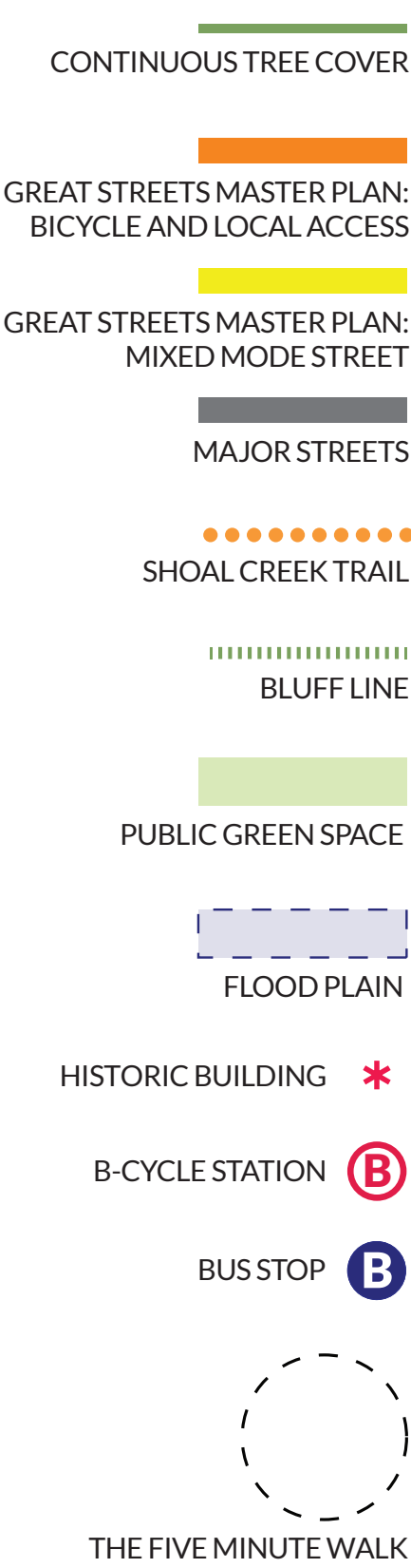
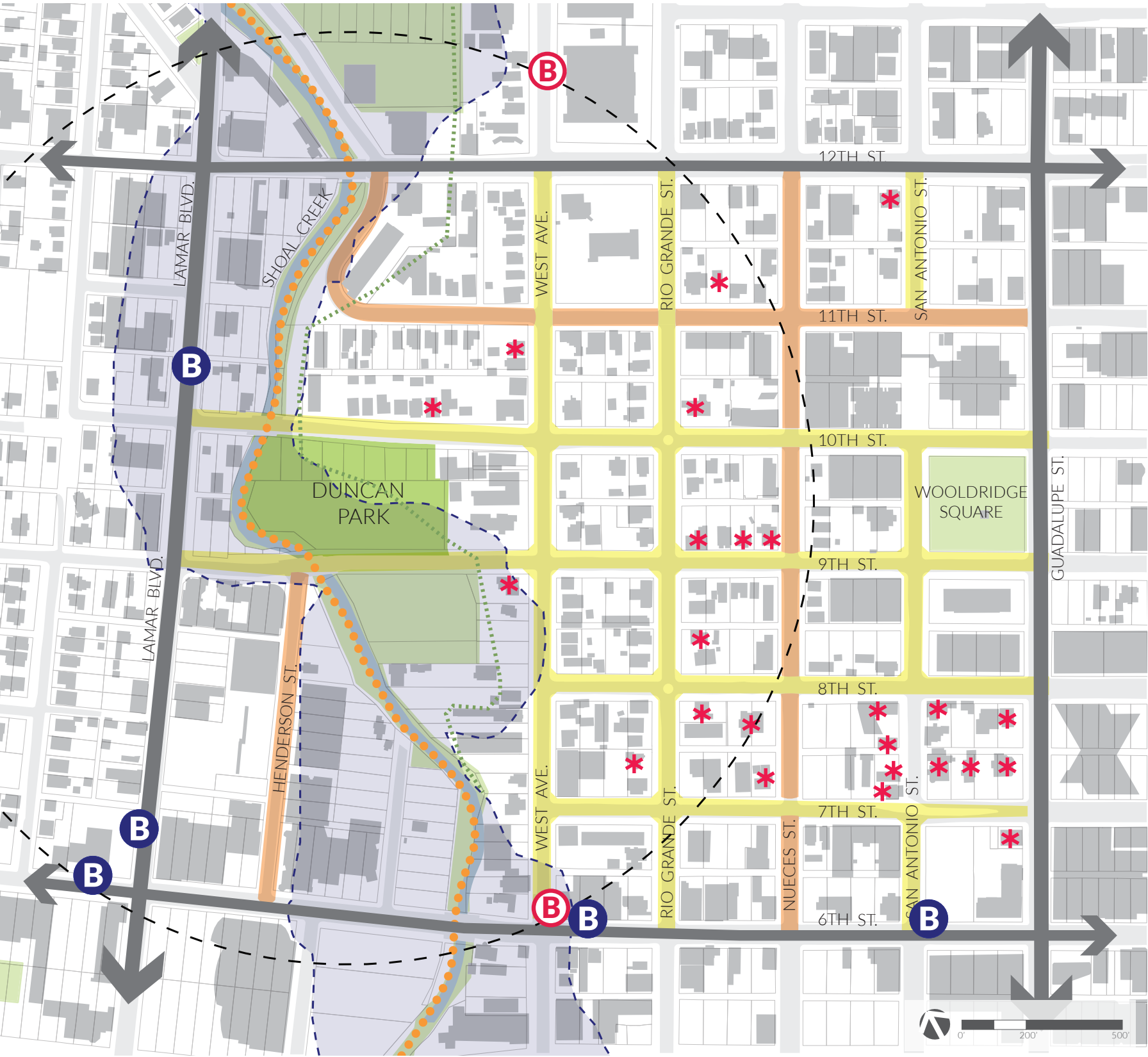
Duncan Park currently offers few amenities but has the potential to be destination point along the Shoal Creek Trail. It is approximately half way between Pease Park and the Lady Bird Lake Hike and Bike Trail. As a destination, Duncan Park could offer a place for relaxation, education, play, and a rest stop.

DOWNTOWN PARK AMENITIES

BUTLER SHORES AT TOWN LAKE BASEBALL FIELDS MIXED USE FIELDS BOAT DOCK SCENIC OVERLOOK SOFTBALL FIELD RESTROOM	WEST AUSTIN NEIGHBORHOOD PARK POOL DOG PARK BASKETBALL COURT PLAYGROUND RESTROOM
LAMAR BEACH AT LADY BIRD LAKE BASEBALL FIELDS MIXED USE FIELDS BOAT DOCK SCENIC OVERLOOK SOFTBALL FIELD RESTROOM	HIKE AND BIKE TRAIL BOAT DOCK BOAT HOUSE FISHING DOCK GAZEBO
REPUBLIC SQUARE [UNDER CONSTRUCTION]	PEASE DISTRICT PARK VOLLEYBALL COURT BASKETBALL COURT PLAYGROUND BARBECUE RESTROOM
WOOLDRIDGE SQUARE GAZEBO	AUDITORIUM SHORES AT TOWN LAKE & BUTLER PARK DOG PARK SCENIC OVERLOOK OUTDOOR AUDITORIUM WATER POND SPRAYGROUND RESTROOMS
HOUSE PARK RECREATION CENTER SKATE PARK BIKE REPAIR STATION RESTROOM	DUNCAN PARK BMX PARK ACCESS TO HIKE & BIKE TRAIL

CONTEXT ANALYSIS

NEIGHBORHOOD AMENITIES

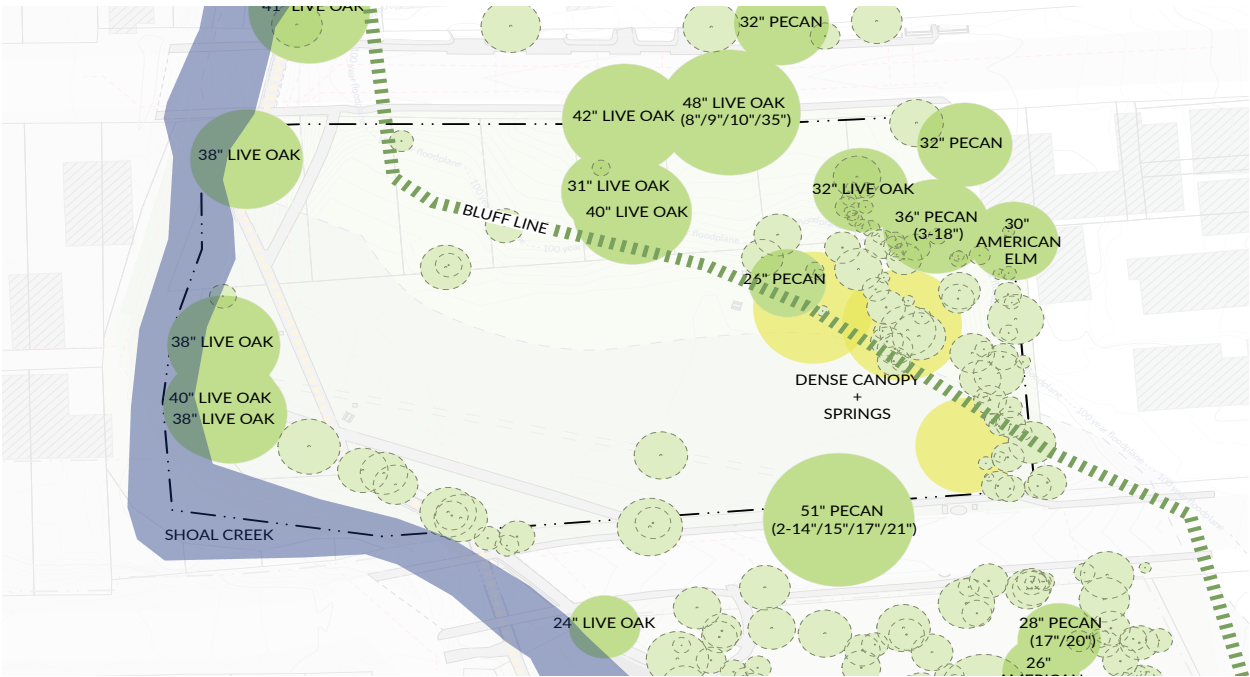


According to City standards, Duncan Park is considered a neighborhood park and serves the surrounding residential communities to the west and downtown businesses to the east. Its location along Shoal Creek, close proximity to historic buildings and Wooldridge Square creates a unique opportunity for Duncan Park to be a major connective piece in the greater urban fabric.

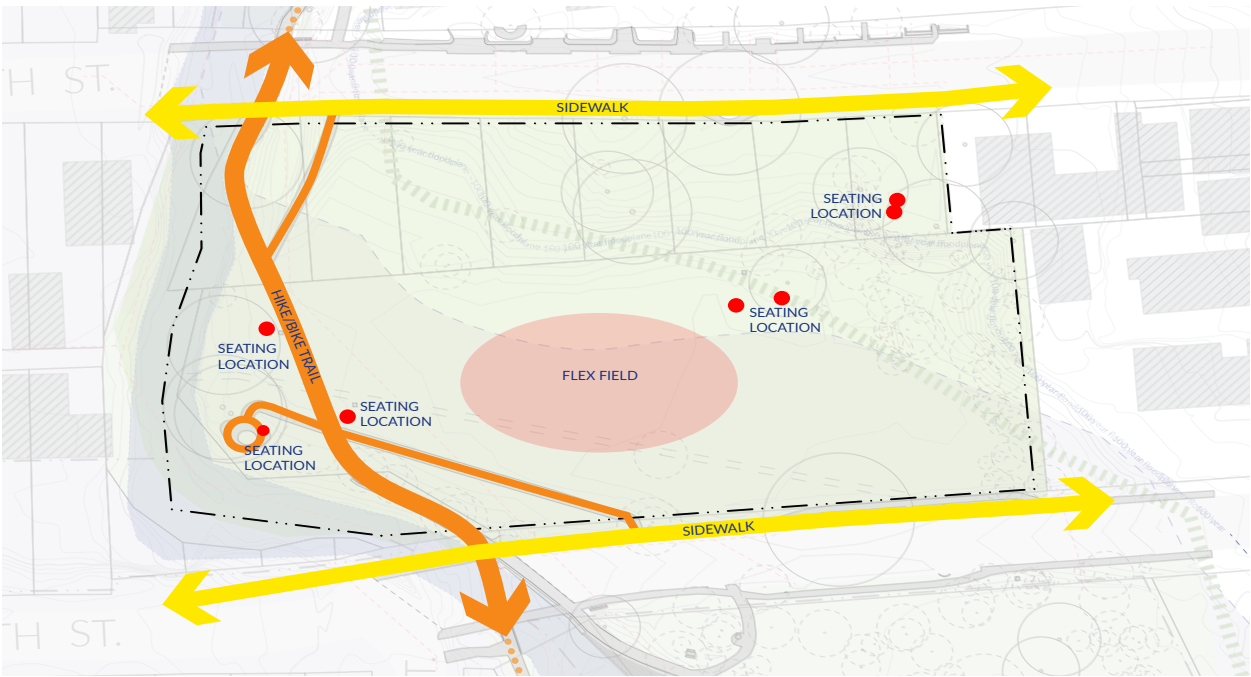
SITE ANALYSIS

PARK AMENITIES

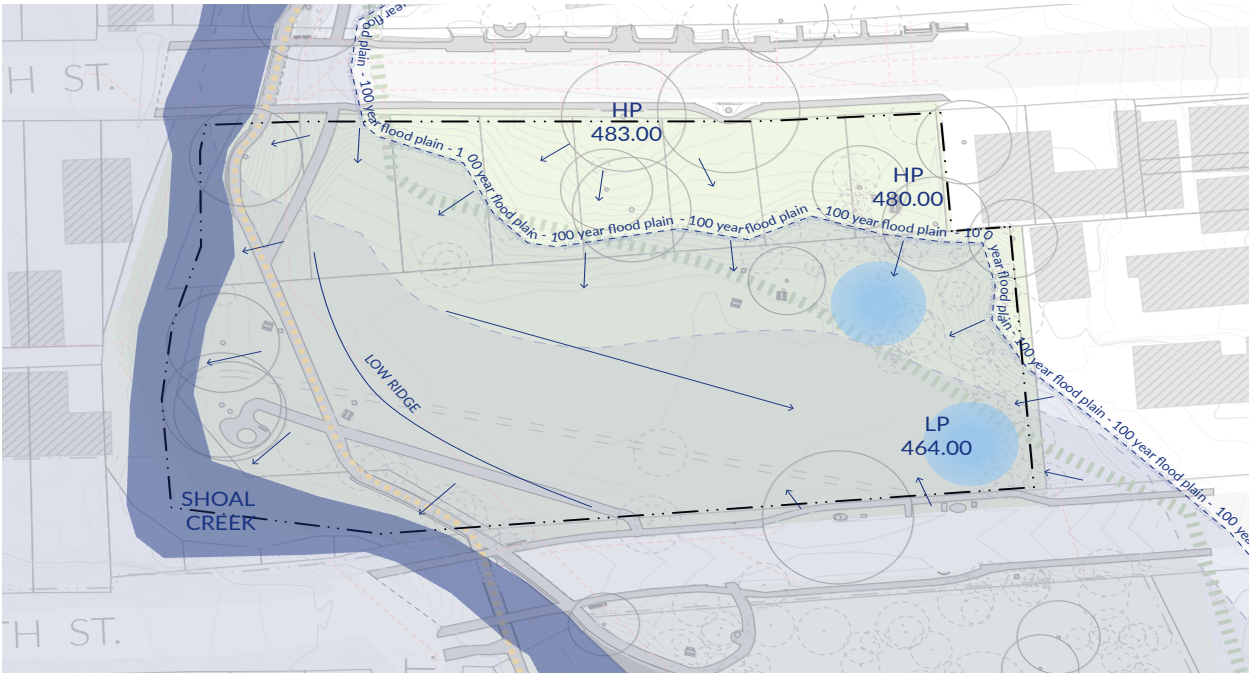
These diagrams show the existing conditions of the site in regard to environmental assets, hydrology, circulation, program and dominant views. There are opportunities to highlight many existing features such as the large heritage trees and proximity to the creek while managing challenges too such as, working around seeps and poor drainage.



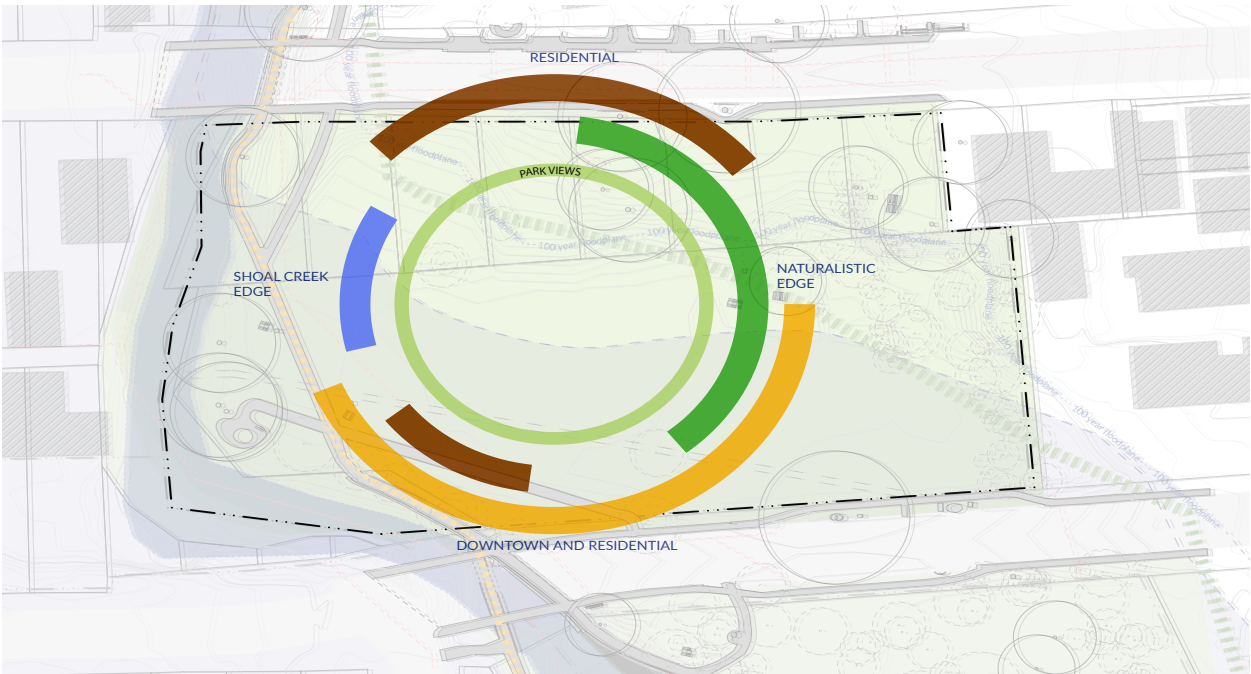
ENVIRONMENTAL ASSETS



CIRCULATION AND PROGRAM



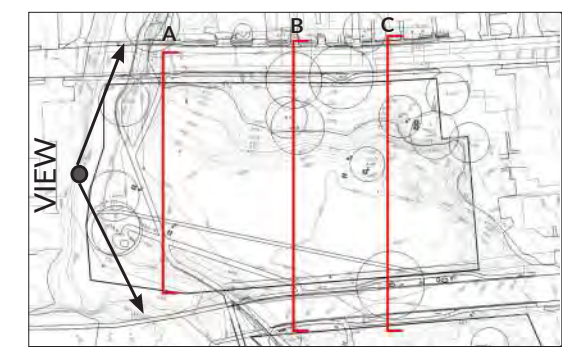
HYDROLOGY



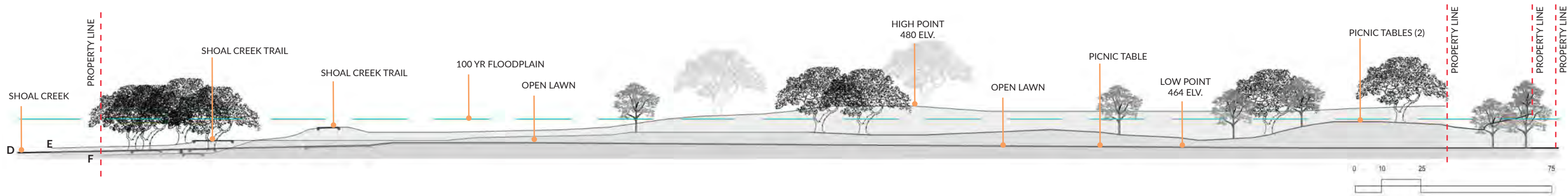
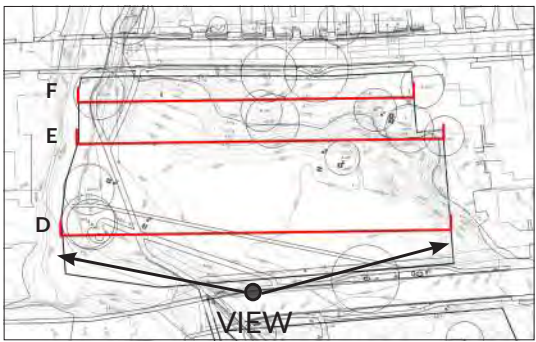
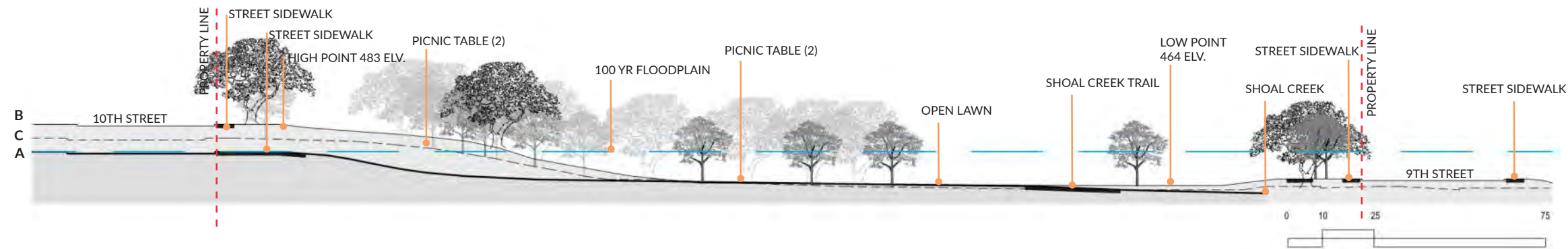
DOMINANT VIEWS

SITE ANALYSIS

TOPOGRAPHY



Existing sections are overlaid to show the topography change happening within the site. This begins to show where high points are located that can provide scenic views of the park and downtown skyline.



VISIONING WORKSHOP

Public survey efforts for Duncan Park took place when the project was initiated in 2015 and 2016. Summary charts from the surveys can be found in the Appendix. Surveys were sent out through PARD and Shoal Creek Conservancy. In addition, dwg. and PARD surveyed people in Duncan Park during It's My Park Day 2016.

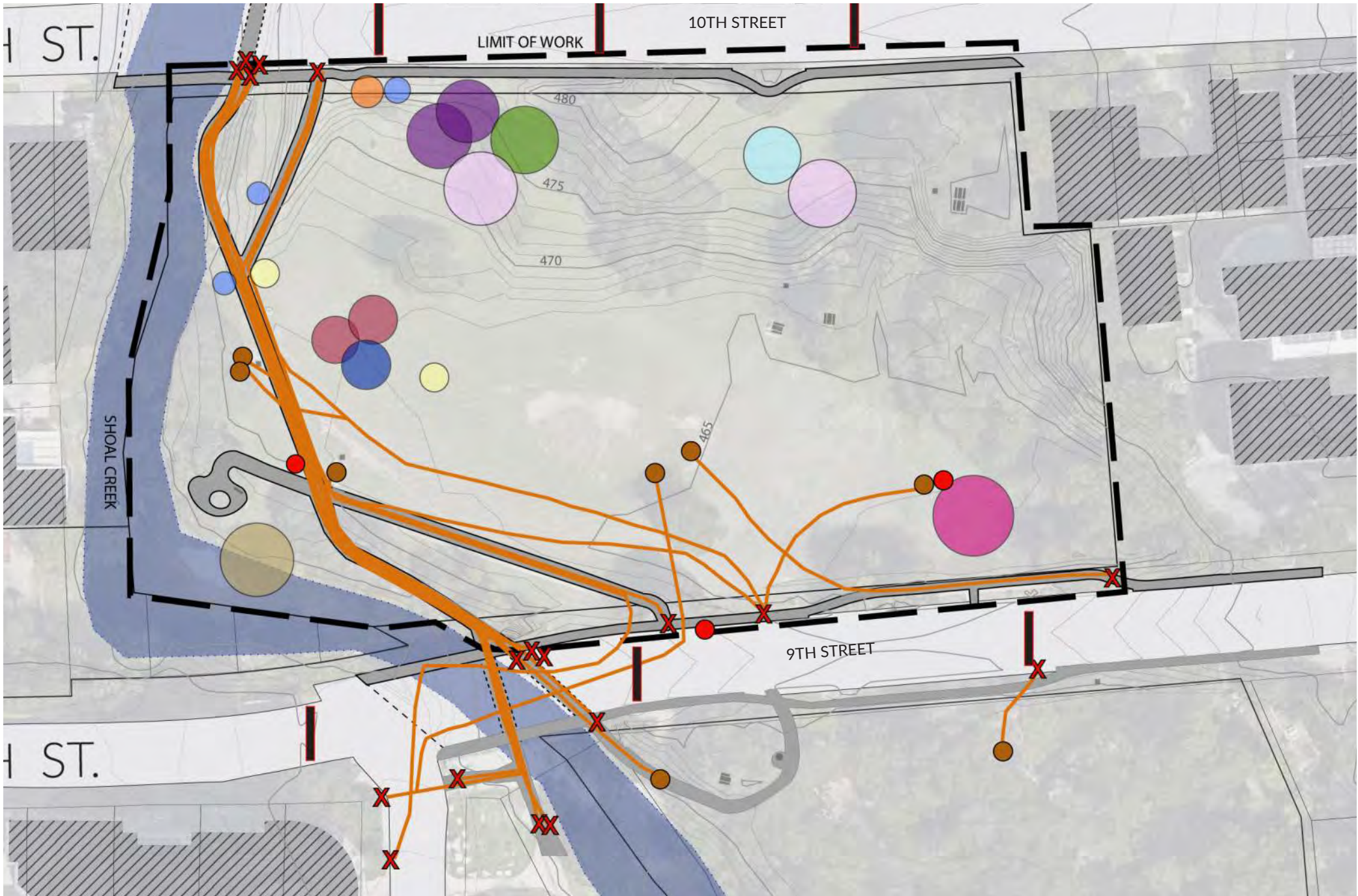
The surveys from both years had very similar questions. The most frequent requests for Duncan Park include the following:

- preserve and enhance the native vegetation
- create more shade
- add a restroom
- improve paths
- create greater access to the creek
- maintain the lawn area
- improve drainage
- add a place for organized play
- more picnic tables.



VISIONING WORKSHOP

2016 VISION WORKSHOP MAP EXERCISE



LEGEND			
X	ARRIVAL	●	SIGNAGE
—	DESIRE LINES	●	VOLLEYBALL COURT
●	DESTINATION	●	WORKOUT AREA
—	SPEED BUMP	●	BASKETBALL COURT
●	BIKE RACKS	●	PLAYGROUND
●	PICNIC TABLES	●	BEACH AREA
●	ART INSTALLATION	●	AMPHITHEATER COURT
●	RESTROOM	●	RAIN GARDEN

Summary of Map Exercise from Public Meeting

This map is a compilation of the responses from the public engagement meeting held November 16, 2016. Participants were asked several questions about Duncan park in which they responded by marking their answers on a site map similar to the one displayed on this page. The questions asked were:

Question 1: Where do you arrive?

Mark location with a X

Question 2: Where is your first destination and how do you get there?

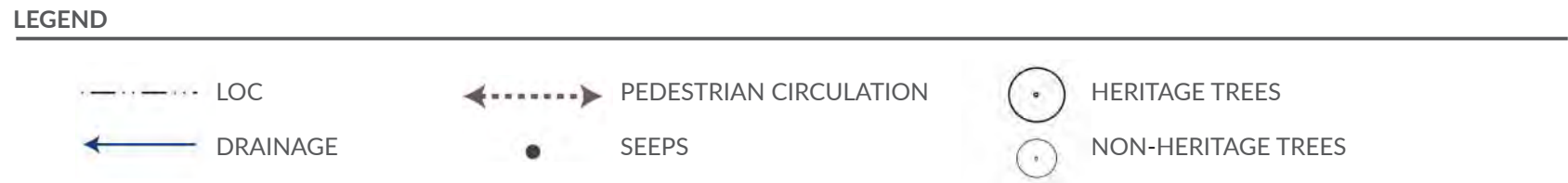
Mark destination with a ●
Mark the path to your first destination with a —

Question 3: If there was an unlimited budget what would you want to happen in Duncan Park?

Answers vary and are marked by different colored circles. See legend for meaning.

PRELIMINARY PLAN

PROGRAM DIAGRAM



Information gathered at the public meeting directly impacted the concept development for Duncan Park, resulting in the program diagram on the left. Duncan Park is envisioned as a hub for the city and a destination for bikers and pedestrians alike. The focus of the design is to create a vibrant, ecologically-rich environment along Shoal Creek and within the Downtown urban core.

One of the main features of the design includes a drainage amenity of rain gardens along 9th Street that enhances the existing wetland and provides a solution for existing drainage issues. This use of green infrastructure can serve as an example for a Green City Initiative.

The central flex lawn of the park remains, preserving the identity of the park. Throughout the site habitat is preserved, enhanced and defined by various planting such as wetland, orchids and ferns, an exposed limestone bluff, butterfly garden, and shade garden. Educational signage and places for respite are dispersed throughout the park.

Additional trails are created for greater connectivity within the park and provide ADA accessible routes which Duncan Park is currently lacking.

PRELIMINARY PLAN & CONCEPT DEVELOPMENT

SITE PLAN



PLAN FEATURES

1. FLEX LAWN
2. NATIVE SHADE/ UNDERSTORY VEGETATION
3. BIOSWALE
4. WET MEADOW
5. RIPARIAN PLANTING
6. ECO-BOARDWALK
7. INTERPRETIVE SIGNAGE
8. NATIVE WOODLAND
9. SHELTERED PICNIC PAVILION
10. TRAILHEAD PAVILION
RESTROOM
WATER FOUNTAINS
B-CYCLE
CITY VISTA POINT
11. TERRACE STEPS
12. CENTRAL SEATING AREA
13. SHOAL CREEK HIKE/BIKE TRAIL
14. 9TH STREET TRAFFIC CALMING
15. PARK POINTS OF ENTRY
16. CEFS: SEEPS AND FERN GARDEN
17. POLLINATOR GARDEN
18. ENHANCED WETLAND
19. MODIFIED GREAT STREETS ENHANCEMENTS

PRECEDENT IMAGERY

RAIN GARDEN



UPLAND ZONE



RIPARIAN



PRECEDENT IMAGERY

VEGETATED AREA



CREEK ACCESS



LAWN



PRECEDENT IMAGERY

TERRACED STAIRS



TRAILHEAD & SIGNAGE



PICNIC AREA



PRELIMINARY PLAN WORKSHOP

On April 12, 2017, a public meeting was held in Duncan Park to present the preliminary plan concept to the public and provide a question and answer session. Overall the preliminary plan design was well received.

Key findings from the public meeting question and answer session are listed here:

- importance of a modified Great Streets program for the park was highlighted
- maintain open view corridors into the park from the street
- overall grade change in some areas of the drainage feature will be around 1'-2', however, other parts would be approximately 1' over a large a portion of the site
- a formal specialized operations and maintenance plan needs to be established
- opportunities for partnerships to exist in the surrounding area (schools, local businesses, community groups, etc.)
- the new drainage amenity requires water to drain within 48 hours after a storm
- the design team recommends the park be irrigated by reclaimed water

To gain feedback on the preliminary plan, surveys were sent out through PARD and the Shoal Creek Conservancy, and were also available to the public meeting attendees. This survey asked participants to rank which features were the most important to them in the proposed design. A summary chart taken from the survey can be found in the Appendix.

Results show the top five important features are:

- 1) Shoal Creek Hike & Bike Trail
- 2) Flex Lawn
- 3) Native Shrub and Understory Vegetation
- 4) Eco-Boardwalk
- 5) Riparian Planting





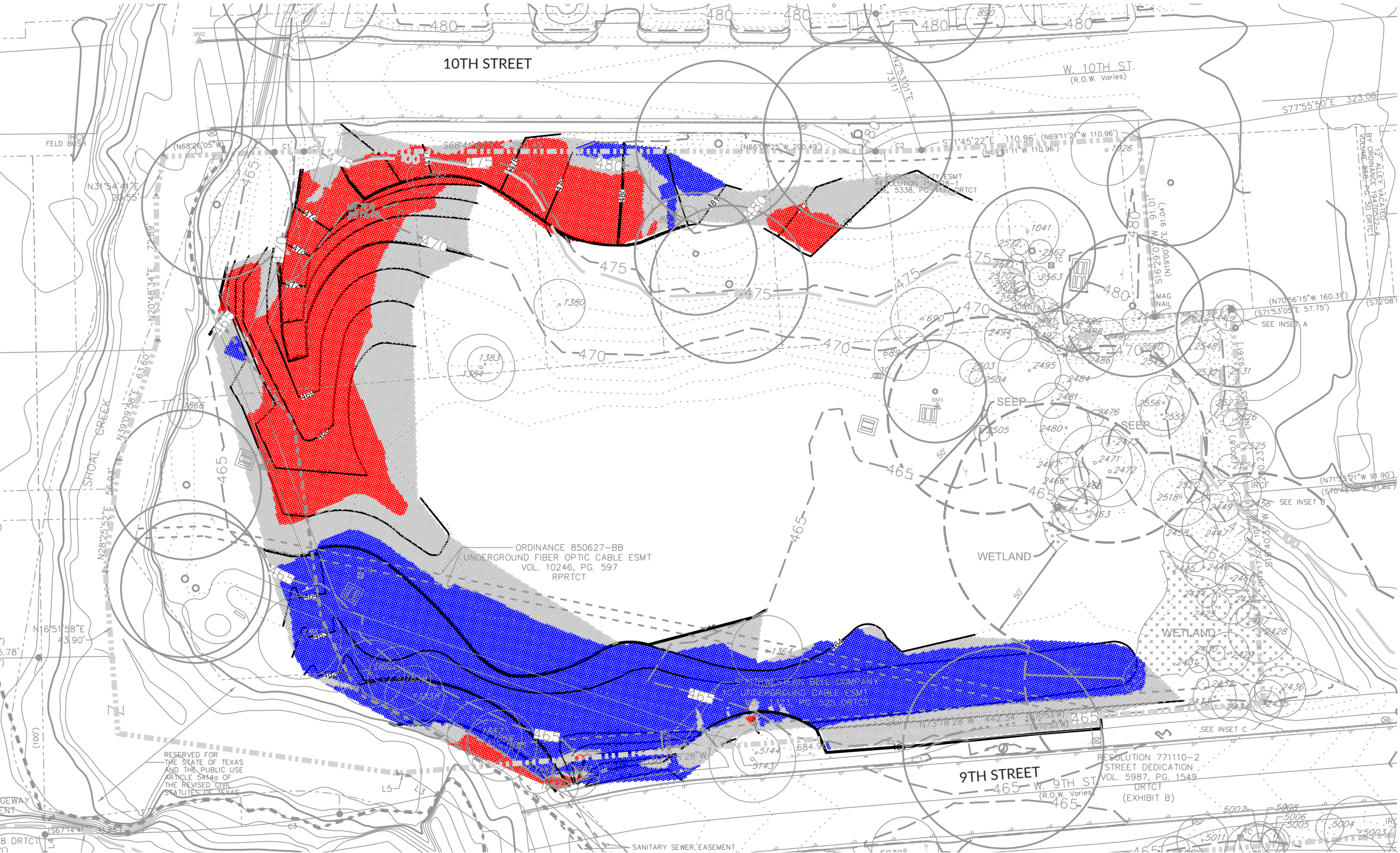
DUNCAN PARK_appendix



APPENDIX

CUT AND FILL ANALYSIS

The preliminary plan's proposed design results in +507 cubic yards of fill to be removed from the site. The majority of the soil will be removed to create a bioswale along the park's 9th Street edge to cleanse and slowly drain stormwater off of the site while, the remaining soil will be added to the 10th Street pathways to create ADA compliant walks.



APPENDIX

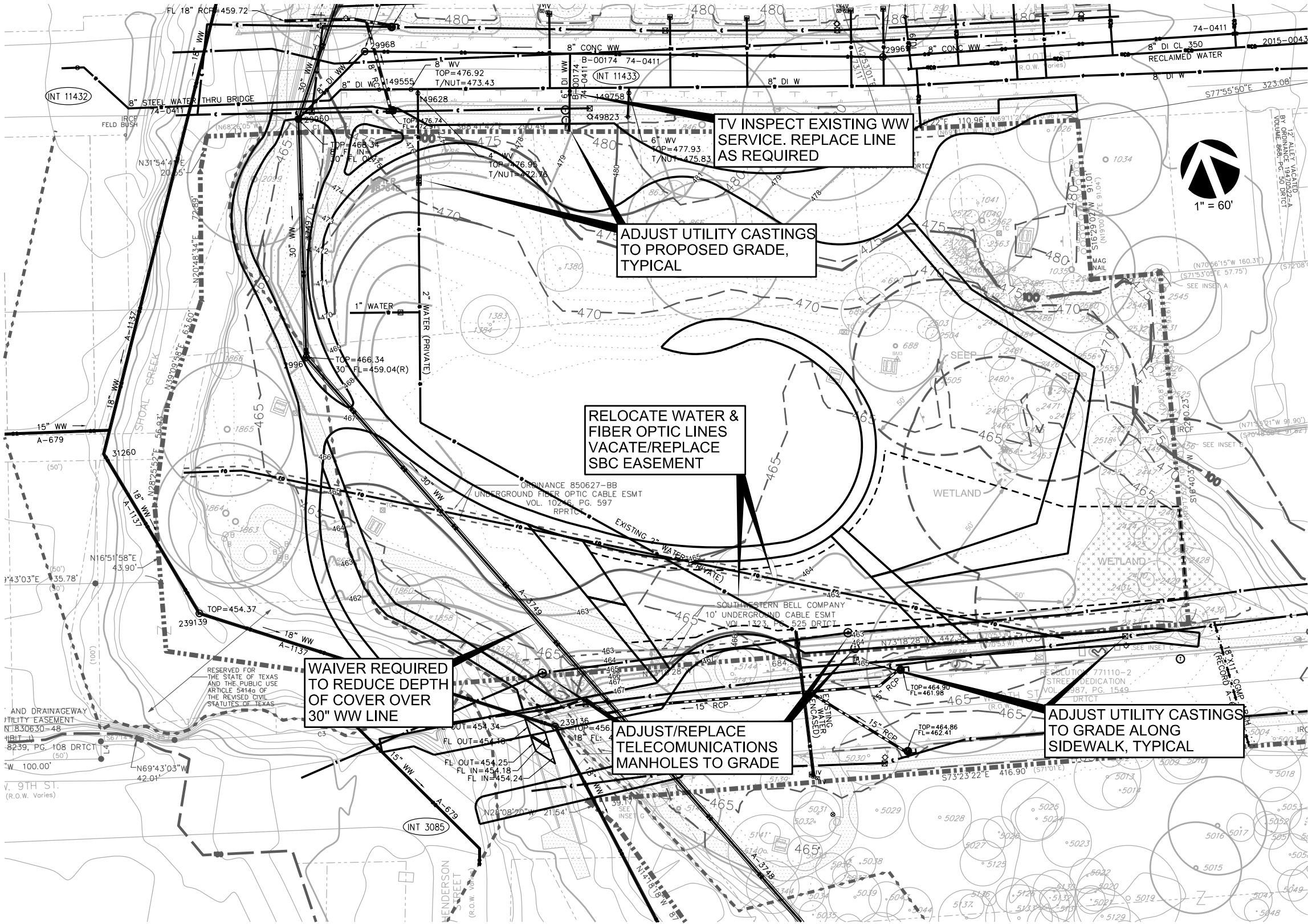
EXISTING UTILITIES



LEGEND	
	PK NAIL
	BENCHMARK
	COTTON SPINDLE SET
	IRON PIPE FOUND
	IRON ROD FOUND
	IRON ROD WITH CAP FOUND
	IRON ROD WITH CAP SET
	NAIL FOUND
	NAIL SET
	RTK POINT
	CALCULATED POINT
	GPS POINT
	LAND HOOK
PRCT	PLAT RECORDS TRAVIS CO, TX
DRCT	DEED RECORDS TRAVIS CO, TX
RPRCT	REAL PROPERTY RECORDS TRAVIS CO, TX
OPRCT	OFFICIAL PUBLIC RECORDS TRAVIS CO, TX
	ELECTRIC LINE
	OVERHEAD ELECTRIC LINE
	TELECOM LINE
	LIGHT POLE
	ELECTRIC PULL BOX
	TELECOM MANHOLE
	TELEPHONE JUNCTION BOX
	STORM DRAIN LINE
	STORM DRAIN MANHOLE
	WATER LINE
	RECLAIMED WATER
	WATER METER
	WATER VALVE
	IRRIGATION CONTROL VALVE
	WASTEWATER LINE
	WASTEWATER MANHOLE
	SIGN
	TRASH CAN
	BOLLARD
	PARKING METER
	CONCRETE PAVEMENT
	FENCE
	CURB & GUTTER
	RETAINING WALL
	100 YEAR FLOODPLAIN
	EROSION HAZARD ZONE
	EXIST. CONTOURS
	CREEK BANK LINE
	EDGE OF BLUFF LINE
	CREEK FLOWLINE
	TREE TO REMAIN
	HERITAGE TREE

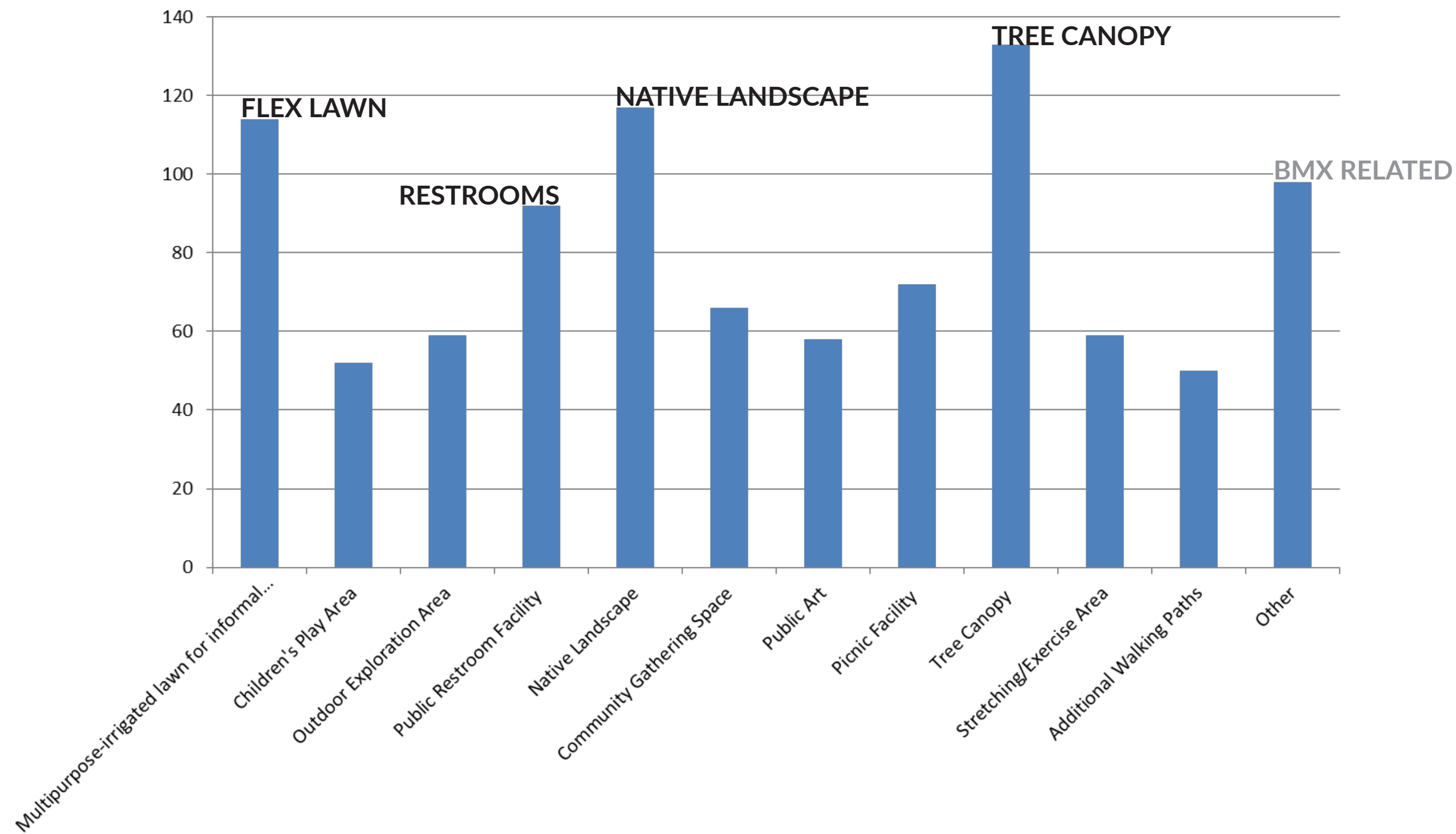
APPENDIX

PROPOSED UTILITIES

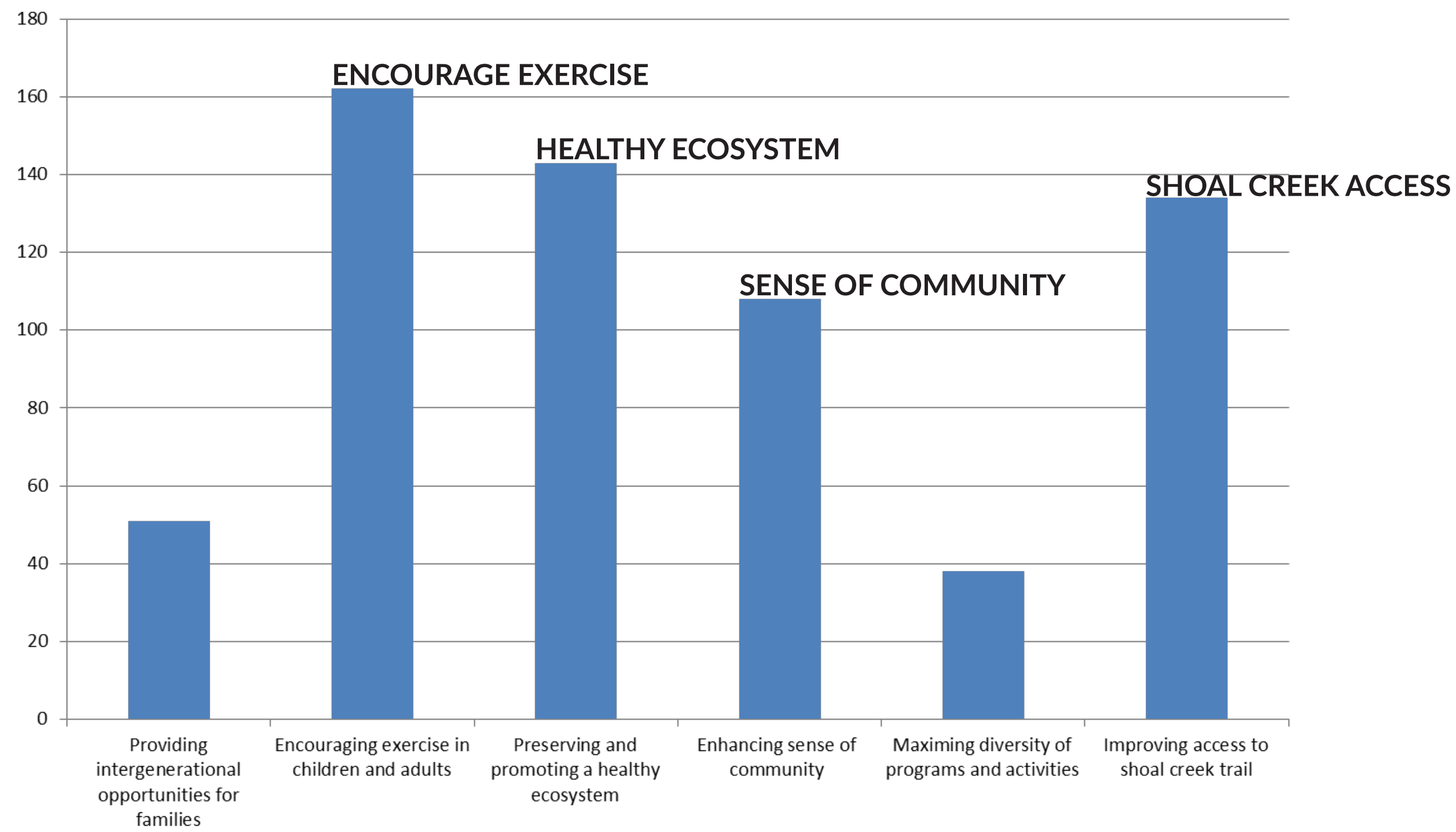


LEGEND	
	PK NAIL
	BENCHMARK
	COTTON SPINDLE SET
	IRON PIPE FOUND
	IRON ROD FOUND
	IRON ROD WITH CAP FOUND
	IRON ROD WITH CAP SET
	NAIL FOUND
	NAIL SET
	RTK POINT
	CALCULATED POINT
	GPS POINT
	LAND HOOK
	PLAT RECORDS TRAVIS CO, TX
	DEED RECORDS TRAVIS CO, TX
	REAL PROPERTY RECORDS TRAVIS CO, TX
	OFFICIAL PUBLIC RECORDS TRAVIS CO, TX
	ELECTRIC LINE
	OVERHEAD ELECTRIC LINE
	TELECOM LINE
	LIGHT POLE
	ELECTRIC PULL BOX
	TELECOM MANHOLE
	TELEPHONE JUNCTION BOX
	STORM DRAIN LINE
	STORM DRAIN MANHOLE
	WATER LINE
	RECLAIMED WATER
	WATER METER
	WATER VALVE
	IRRIGATION CONTROL VALVE
	WASTEWATER LINE
	WASTEWATER MANHOLE
	SIGN
	TRASH CAN
	BOLLARD
	PARKING METER
	CONCRETE PAVEMENT
	FENCE
	CURB & GUTTER
	RETAINING WALL
	100 YEAR FLOODPLAIN
	EROSION HAZARD ZONE
	EXIST. CONTOURS
	CREEK BANK LINE
	EDGE OF BLUFF LINE
	CREEK FLOWLINE
	TREE TO REMAIN
	HERITAGE TREE

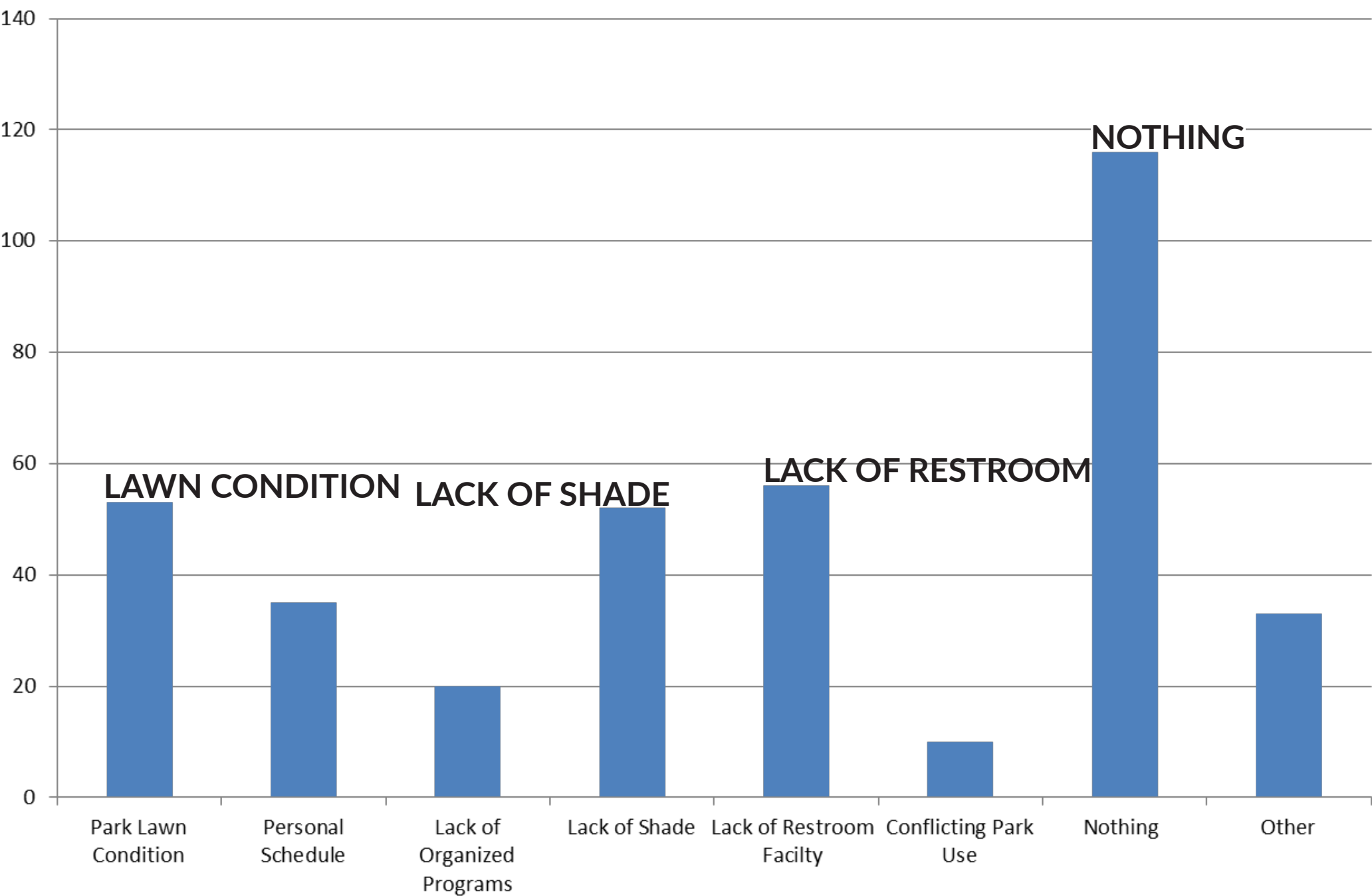
Which site features are most important to you ?



Which of the following qualities would you like to see accommodated at Duncan park?

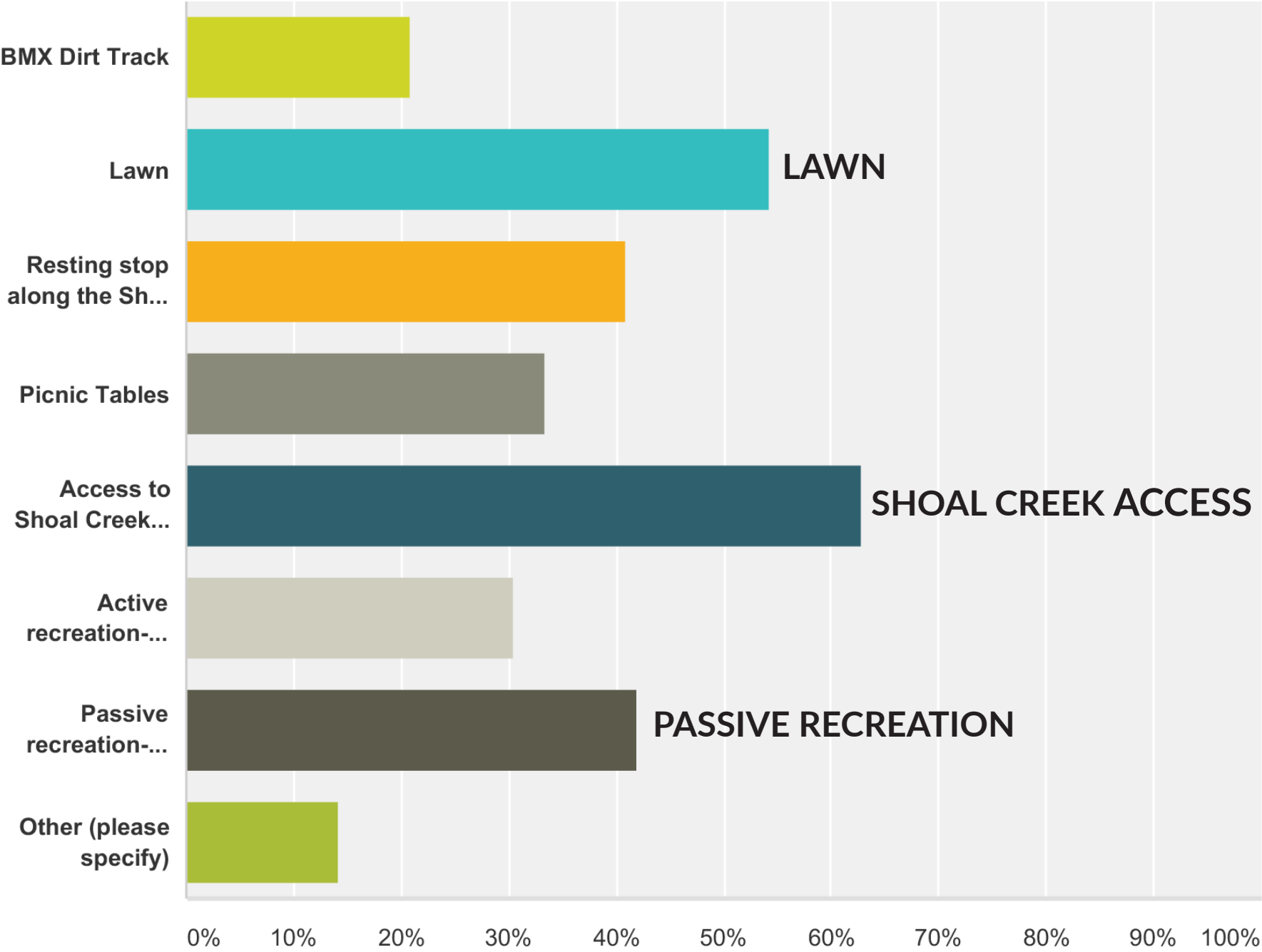


What if anything currently discourages you from using duncan park please
check all that apply



Q1 What existing features at Duncan Park do you currently utilize?

Answered: 105 Skipped: 0

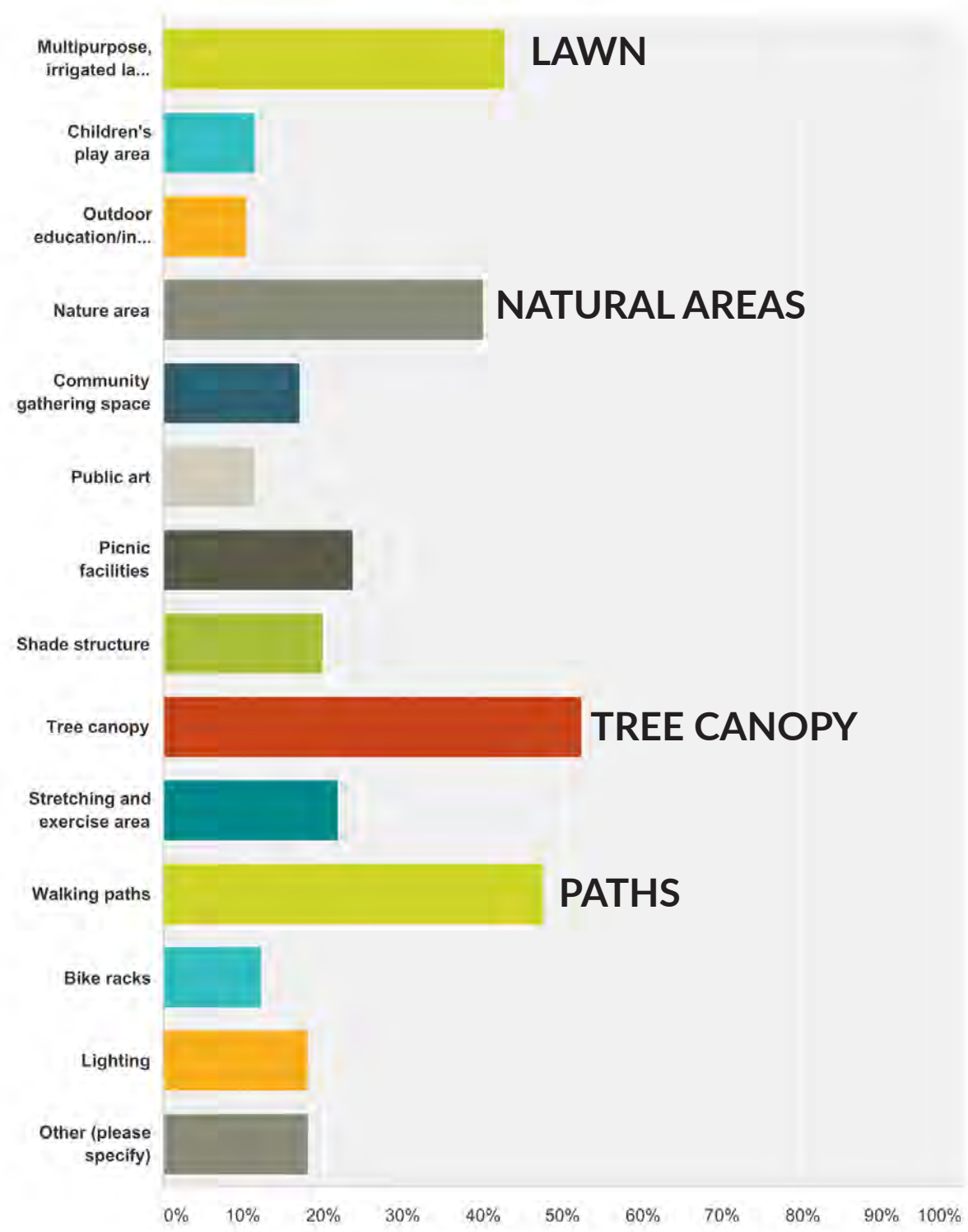


APPENDIX

2016 PUBLIC ENGAGEMENT SURVEY RESULTS

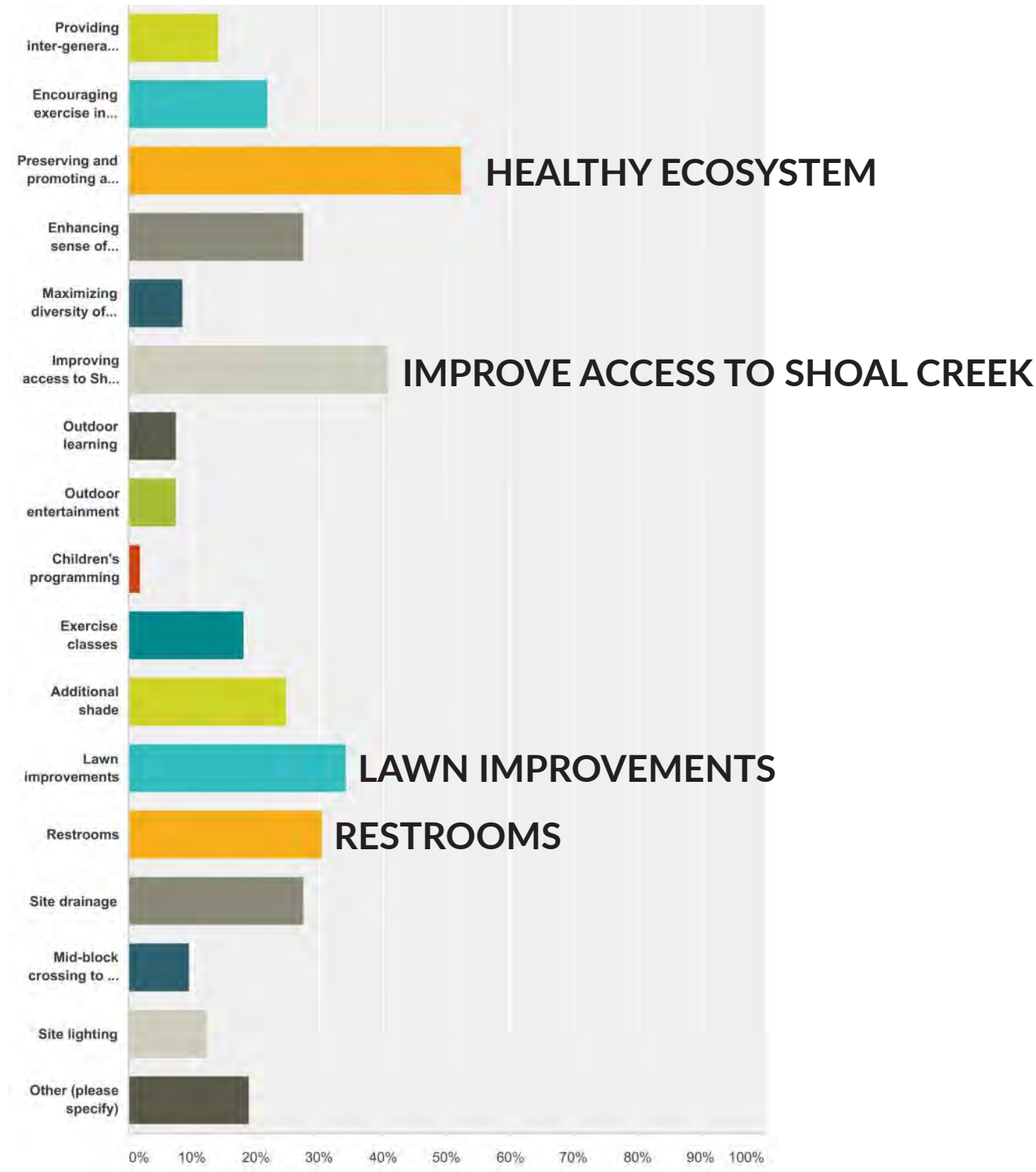
Q2 Which of the following site features are most important to you?

Answered: 105 Skipped: 0



Q3 Which of the following qualities or improvements would you like to see accommodated at Duncan Park?

Answered: 105 Skipped: 0



APPENDIX

2017 PRELIMINARY PLAN SURVEY RESULTS

