

# DUNCAN PARK IMPROVEMENT PROJECT VISION WORKSHOP

2016 / 11 / 16







## WORKSHOP SCHEDULE

5:30 PM - 7:00 PM

INTRODUCTION AND PRESENTATION - 5:30 - 5:55pm (25 min)

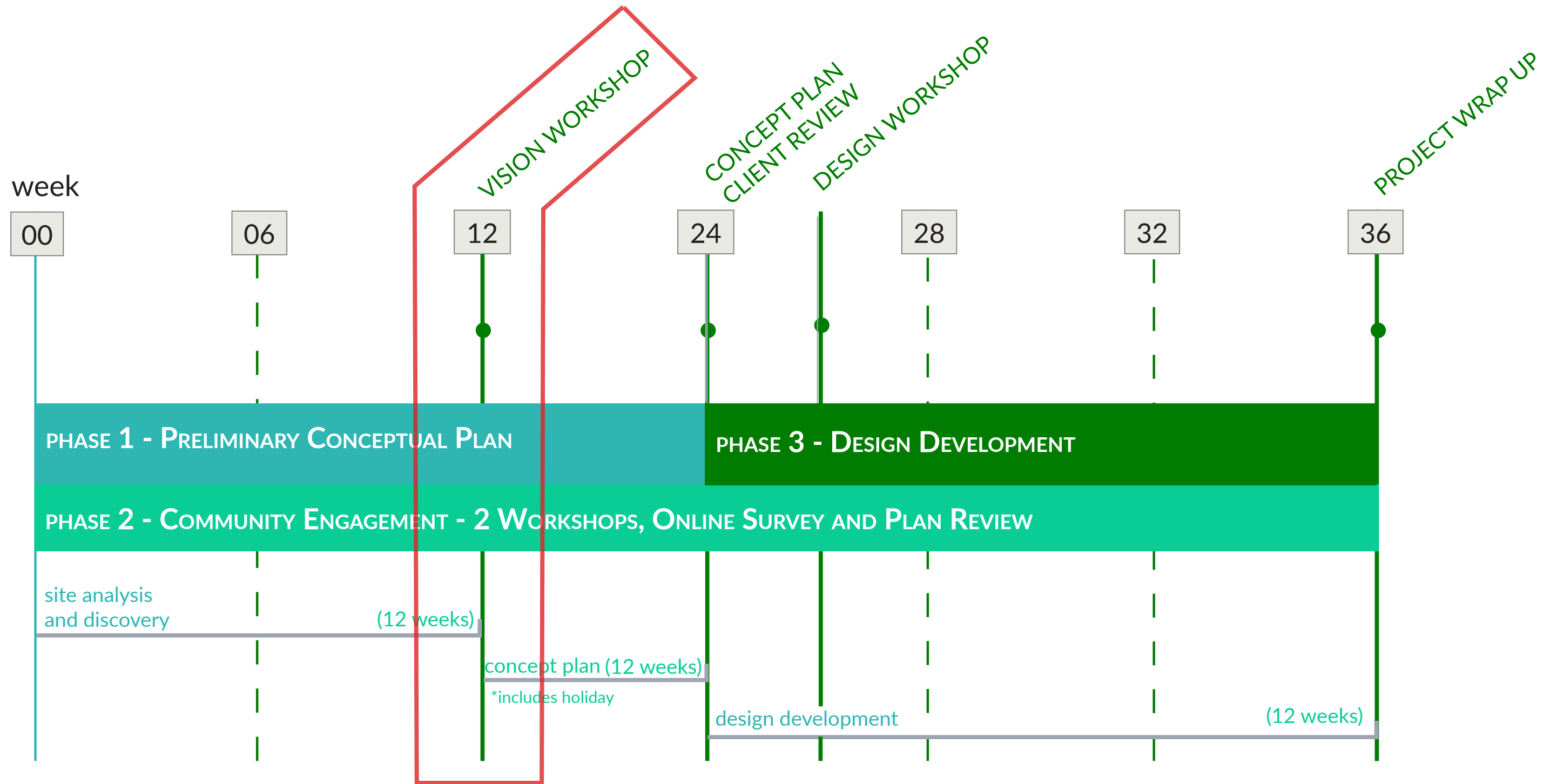
- PROJECT SCOPE
- PUBLIC ENGAGEMENT
- SITE ANALYSIS

QUESTIONS - 5:55 - 6:00pm (10 min)

OPEN HOUSE/WORKSHOP INPUT - 6:00 - 6:45pm (45min)

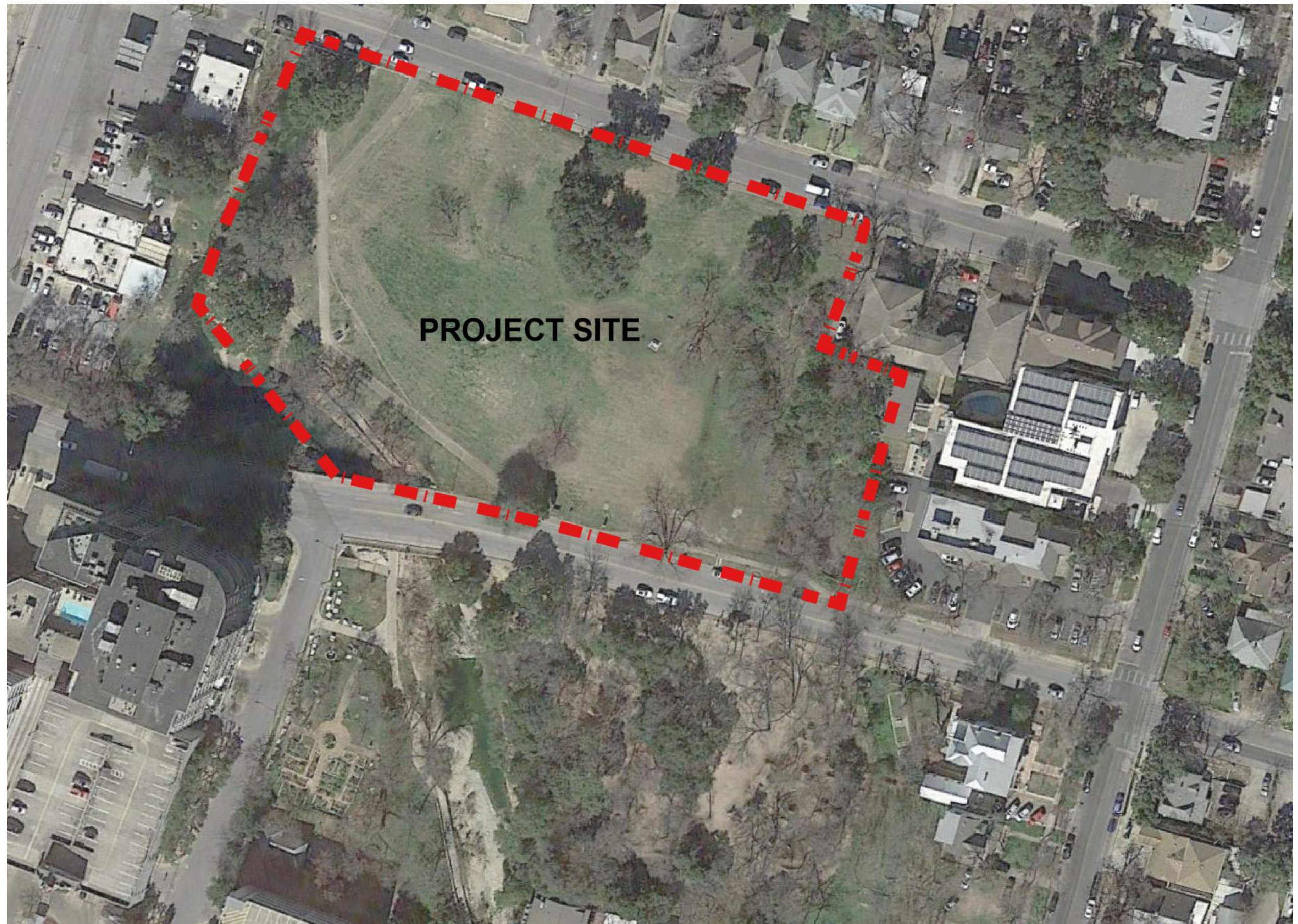
FINAL THOUGHTS AND DISCUSSION - 6:45-6:55pm (10min)





DUNCAN PARK IMPROVEMENT PROJECT // PROJECT SCHEDULE





DUNCAN PARK IMPROVEMENT PROJECT // DESIGN TEAM SCOPE









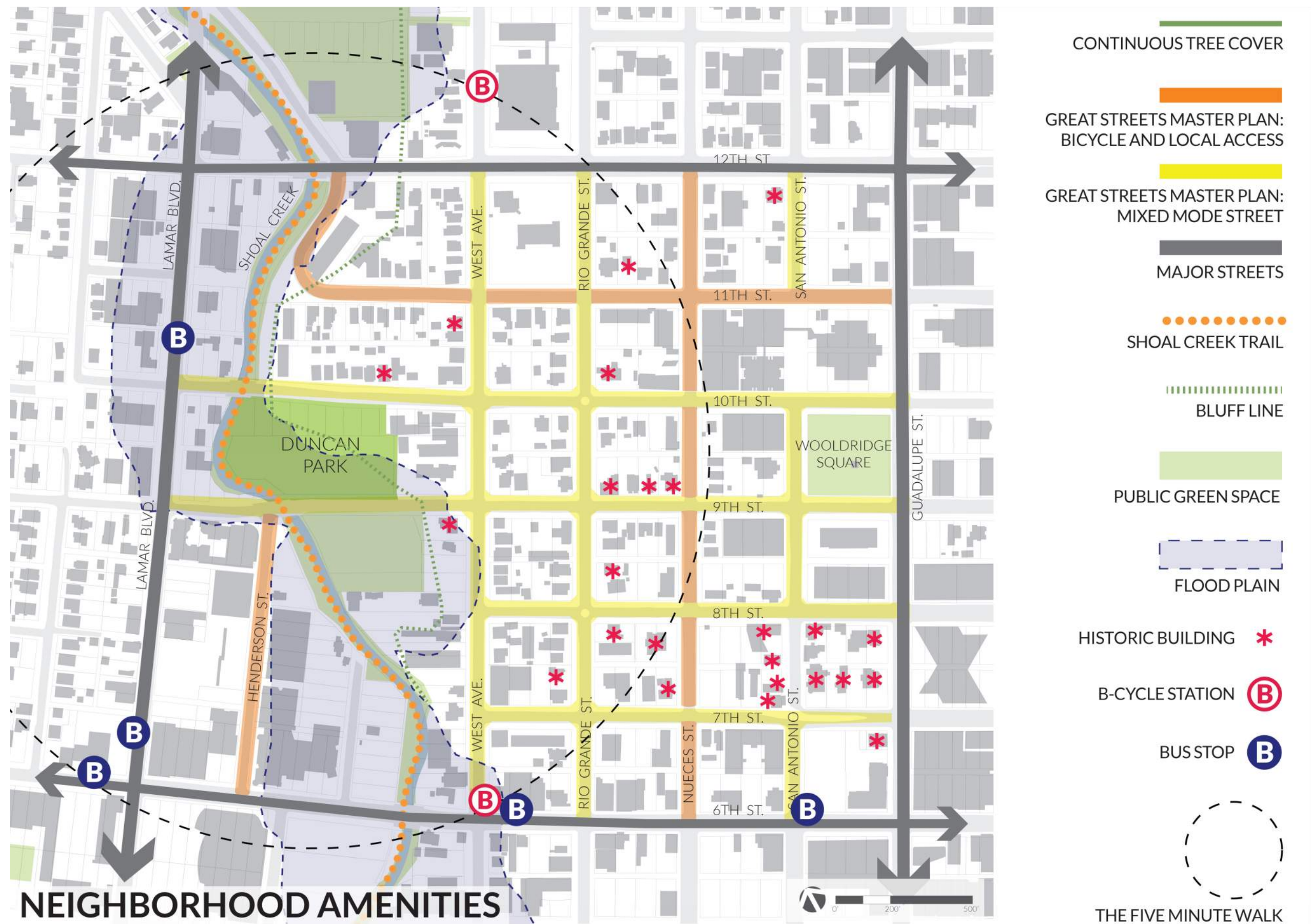
## SITE ANALYSIS

- DOWNTOWN PARKS
- NEIGHBORHOOD
- EXISTING CONDITIONS OVERALL
- ENVIRONMENTAL ASSETS
- HYDROLOGY
- CIRCULATION AND PROGRAM
- PARK VIEWS









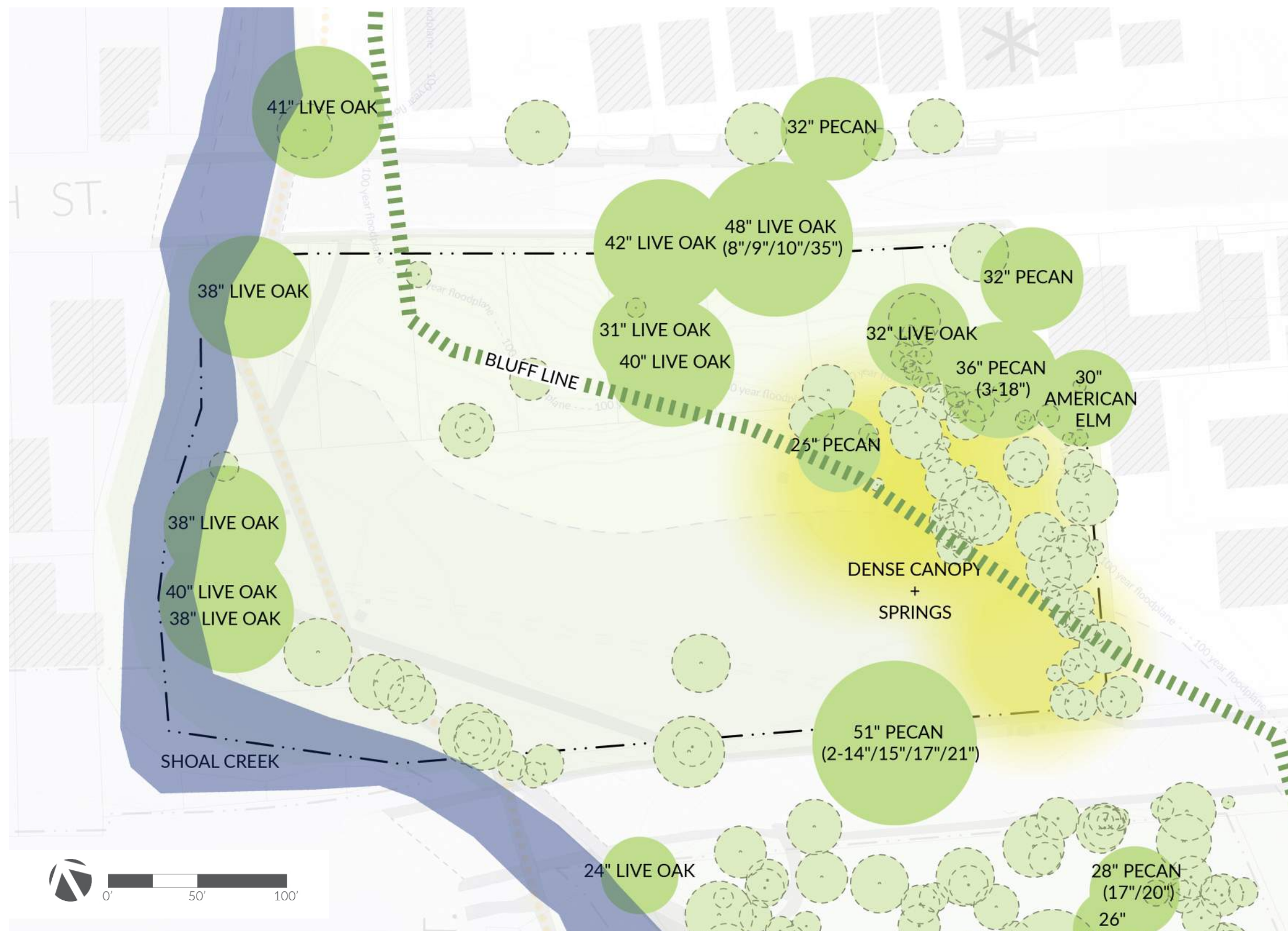
DUNCAN PARK IMPROVEMENT PROJECT // SITE ANALYSIS





DUNCAN PARK IMPROVEMENT PROJECT // SITE ANALYSIS



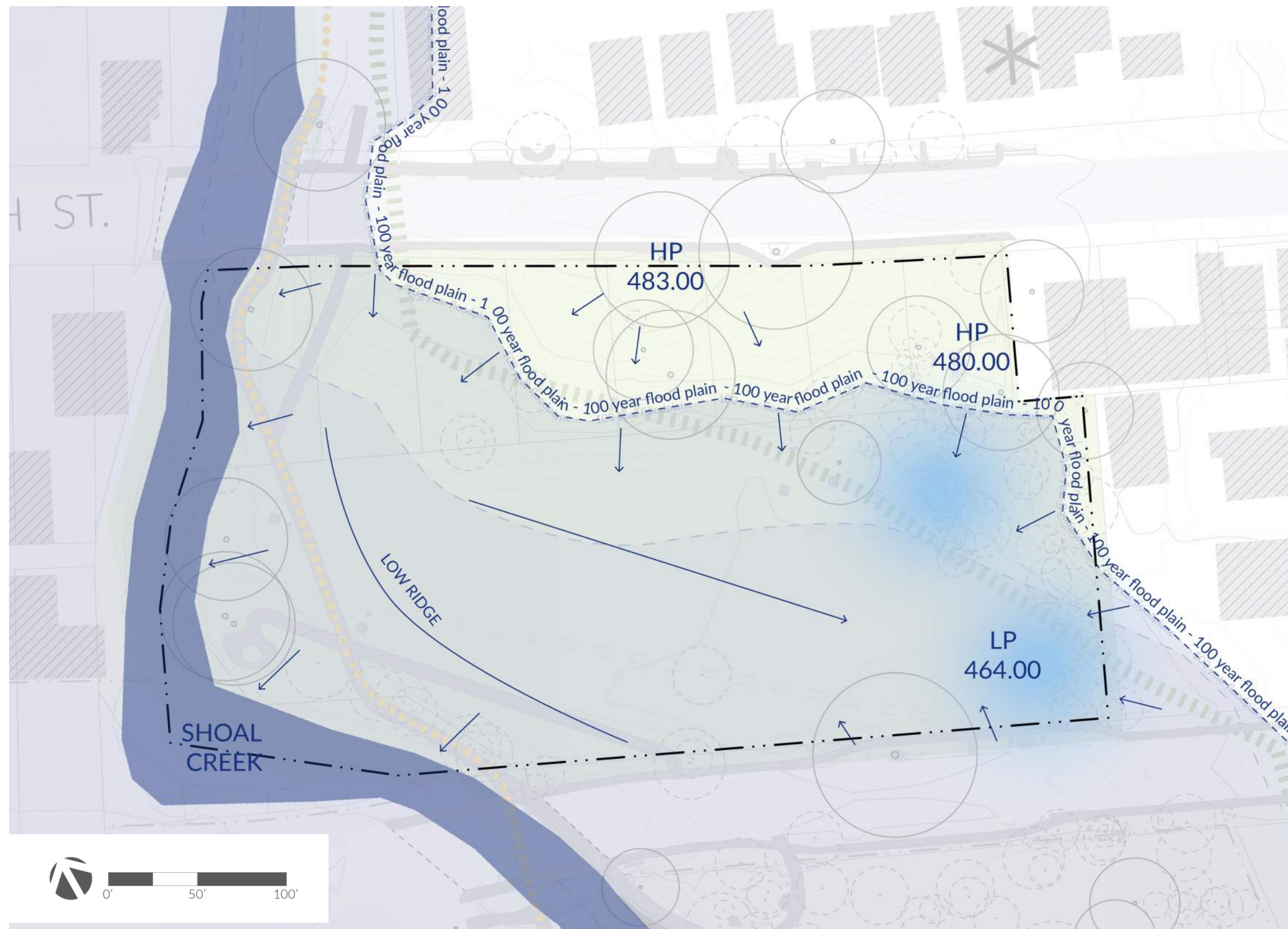


## ENVIRONMENTAL ASSETS

- HERITAGE TREES (24" AND UP)
- SPRINGS AND DENSE CANOPY
- BLUFF LINE
- SHOAL CREEK







## HYDROLOGY

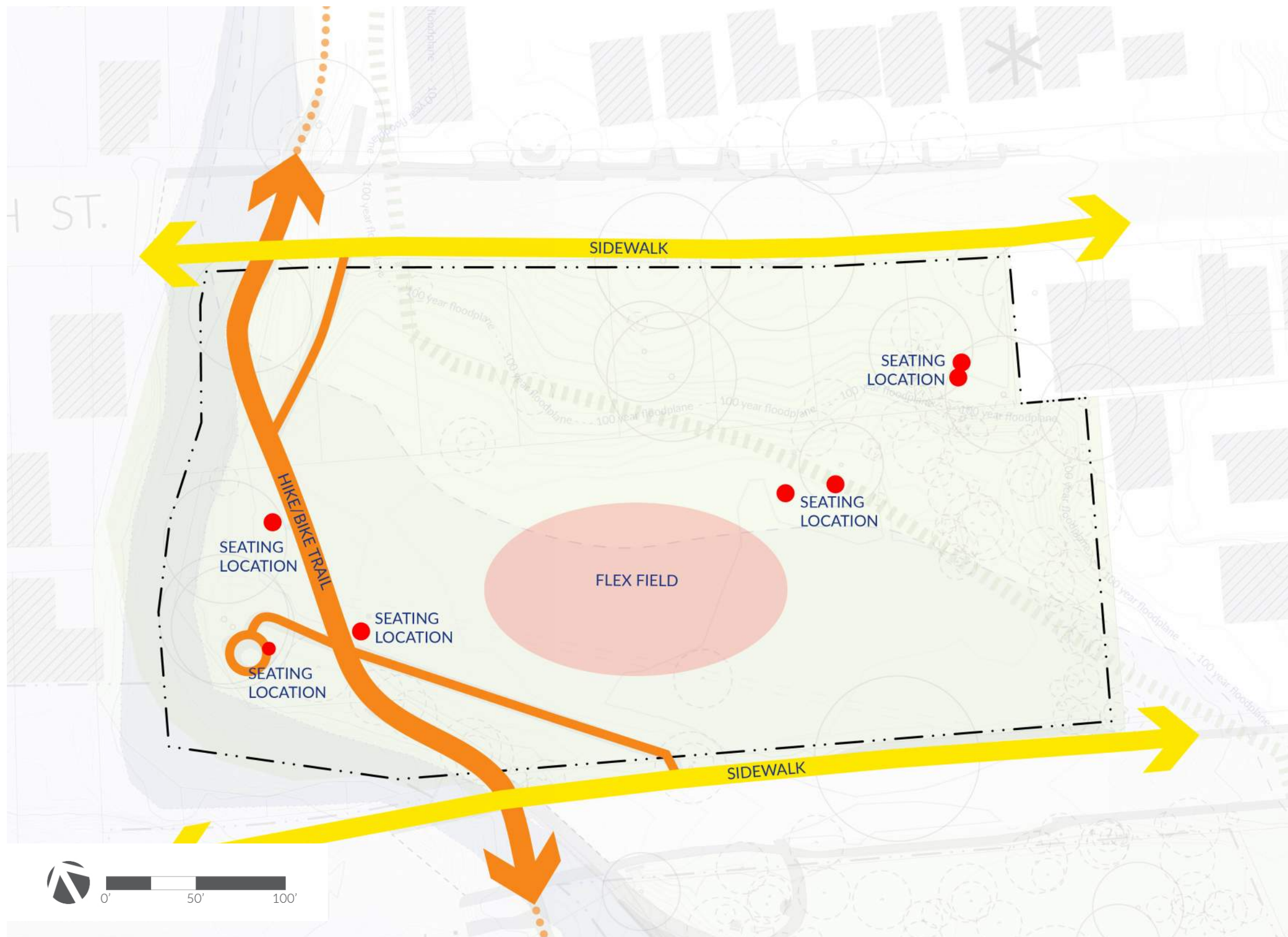
- SHOAL CREEK AND 100 YEAR FLOOD PLAIN
- LOW RIDGE
- SOUTHEASTERN LOW-POINT AND SPRINGS



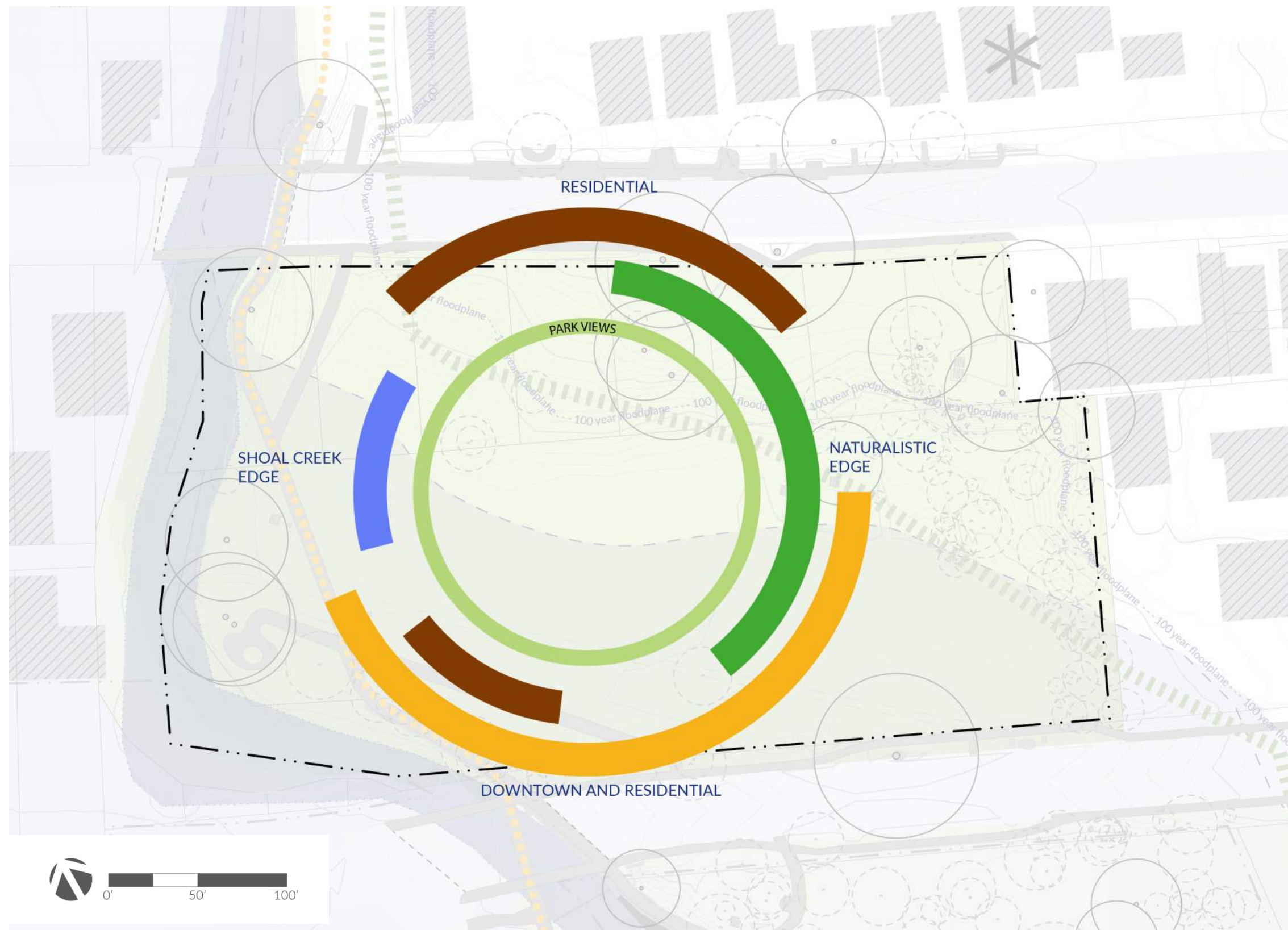


## CIRCULATION AND PROGRAM

- STREET SIDEWALKS
- PARK PATHS AND HIKE/BIKE TRAIL
- SEATING AREAS
- FLEX FIELD





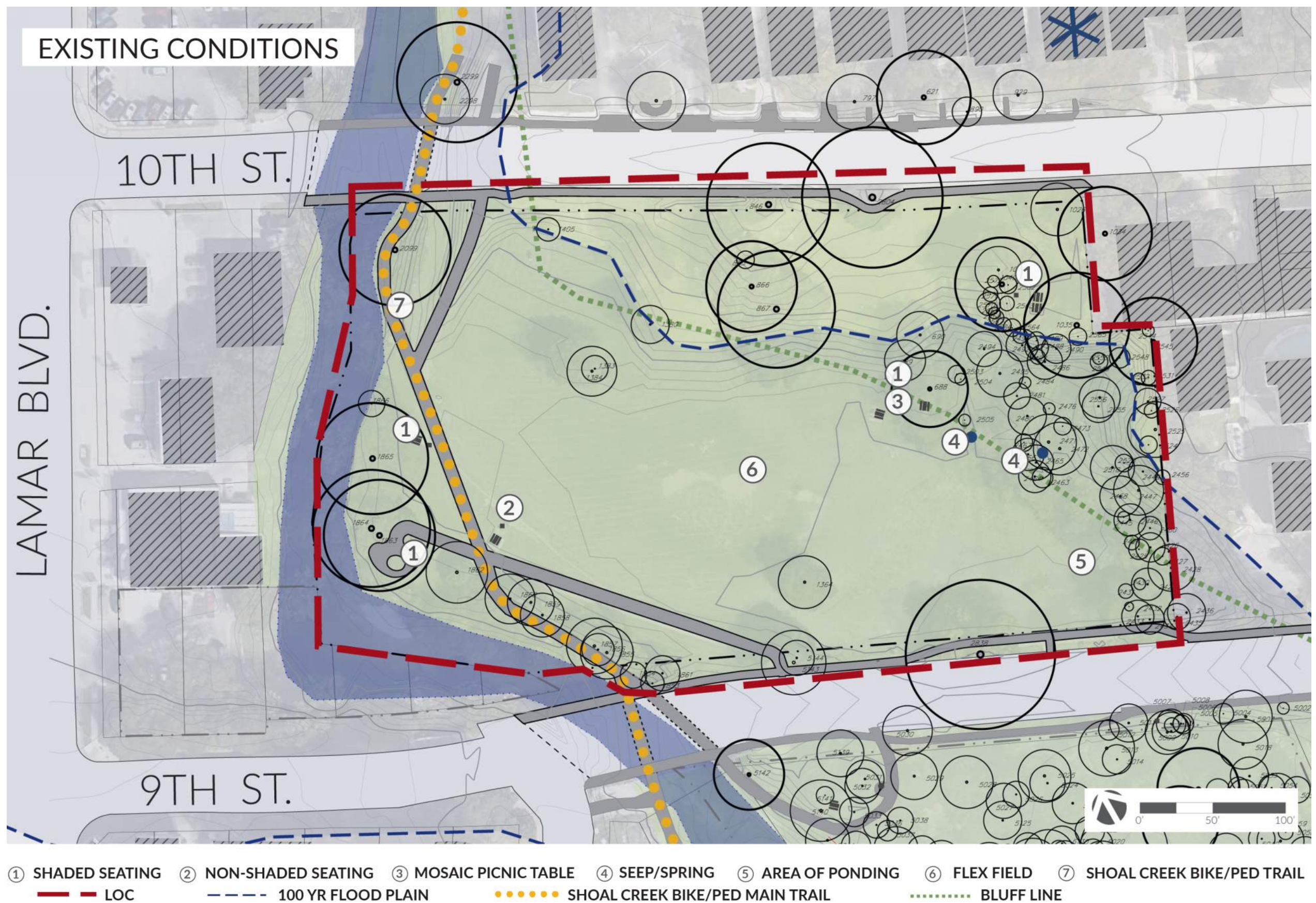


## DOMINANT VIEWS

- ADJACENT RESIDENTIAL
- DOWNTOWN TOWERS
- NATURALISTIC EDGE
- CREEK EDGE











## PUBLIC ENGAGEMENT

- REVIEW OF PARKS AND OPEN SPACE MASTERPLAN (2010)
- REVIEW SUMMARY OF 2014/2015 PUBLIC INPUT
- CONTINUE PUBLIC INPUT (2016)
  - 2 WORKSHOPS
  - ONLINE SURVEY
  - ONLINE DESIGN UPDATES AND OPPORTUNITY FOR FEEDBACK

- 
- A photograph of a public engagement event outdoors. In the foreground, a white table is set up with various items including a red and white patterned blanket, a blue bag, a wicker basket, and several bottles of sunscreen. A person in a black shirt and shorts is standing at the table, looking at a large map or plan. Another person in a white shirt is standing next to them. In the background, there are trees and a white car. The text "PUBLIC ENGAGEMENT" is overlaid at the top, and a list of activities is overlaid in the center.
- ## PUBLIC ENGAGEMENT
- REVIEW OF PARKS AND OPEN SPACE MASTERPLAN (2010)
  - REVIEW SUMMARY OF 2014/2015 PUBLIC INPUT
  - CONTINUE PUBLIC INPUT (2016)
    - 2 WORKSHOPS
    - ONLINE SURVEY
    - ONLINE DESIGN UPDATES AND OPPORTUNITY FOR FEEDBACK



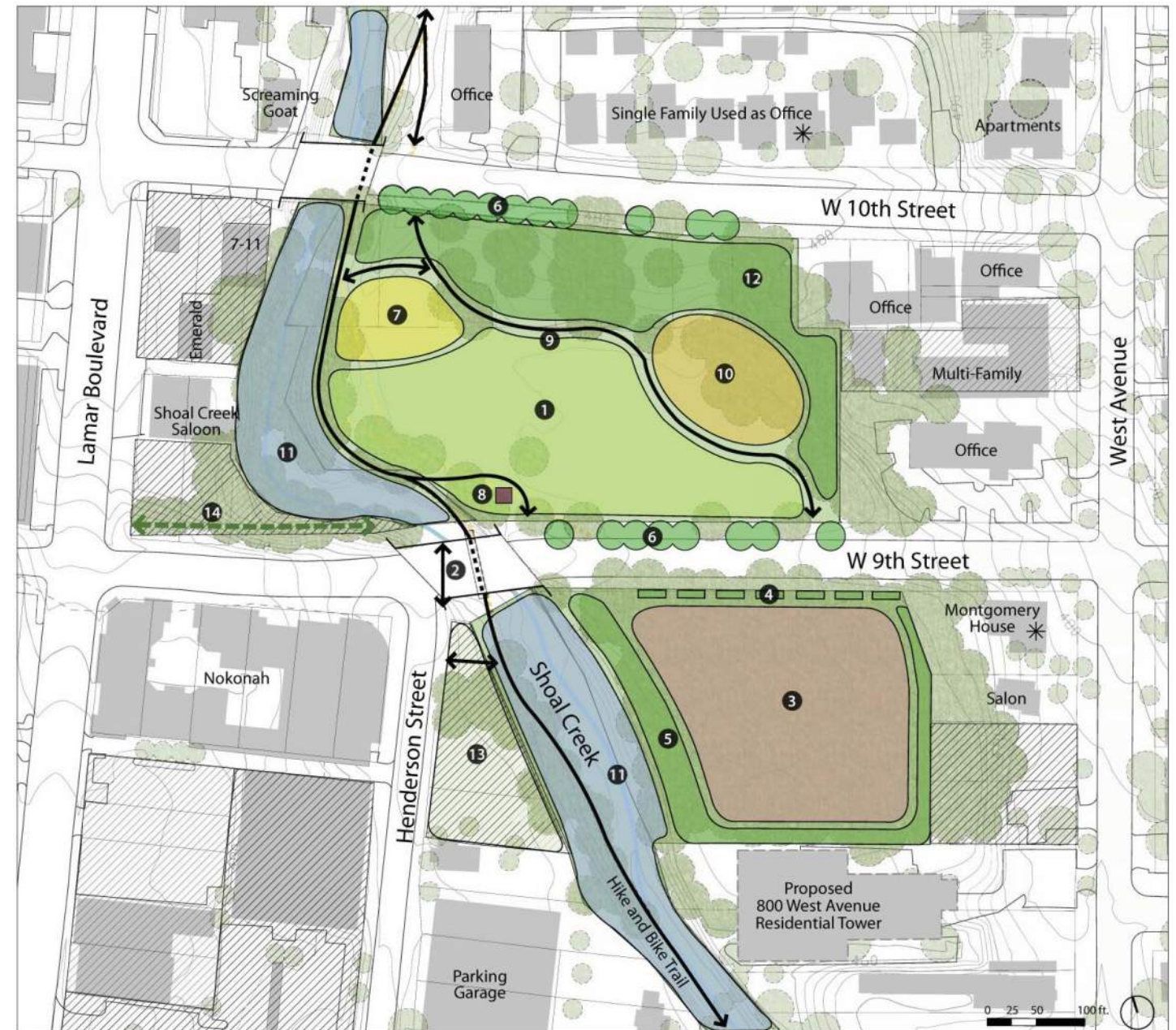
# Downtown Parks and Open Space Masterplan

## Key Goals (for north Duncan Park):

- Improve tree health and vegetation throughout, reinforcing the natural creekside environment.
- Create new attractions to the park to intensify its daily use by nearby residents and employees

### KEY GOALS

- Improve tree health and vegetation throughout, reinforcing the natural creekside environment.
- Create new attractions to the park to intensify its daily use by nearby residents and employees.
- Contain the BMX park activity so it does not impede use of public ROW.



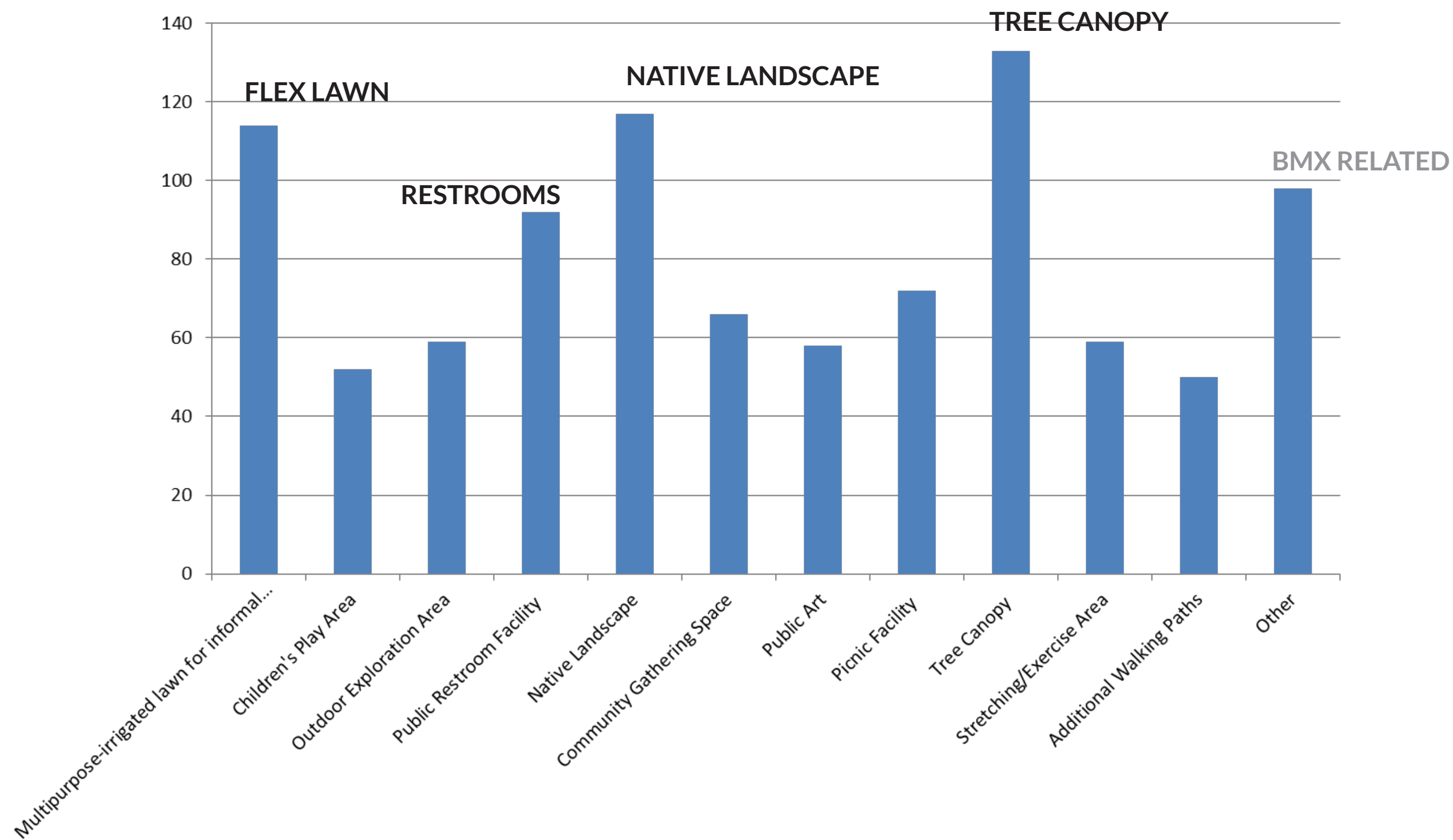
### RECOMMENDATIONS

- 1 Preserve open lawn and introduce an irrigation system.
- 2 Introduce crosswalk on Ninth Street.
- 3 Maintain and enhance BMX park.
- 4 Install a low wall or vegetated buffer along sidewalk.
- 5 Create a vegetated buffer along Shoal Creek and adjacent properties in BMX park.
- 6 Implement Great Streets sidewalks and street trees.
- 7 Install children's play area.
- 8 Construct restroom building.
- 9 Improve and create accessible paths connecting activities.
- 10 Integrate off-leash area adjacent to slope.
- 11 Maintain riparian vegetation, implement slope stabilization and provide benches/picnic tables along the riparian edge.
- 12 Maintain woodland and vegetated slope.
- 13 Consider land acquisition for additional parkland.
- 14 Improve pedestrian connection between park and Lamar Blvd.



# 2014/2015 PUBLIC ENGAGEMENT

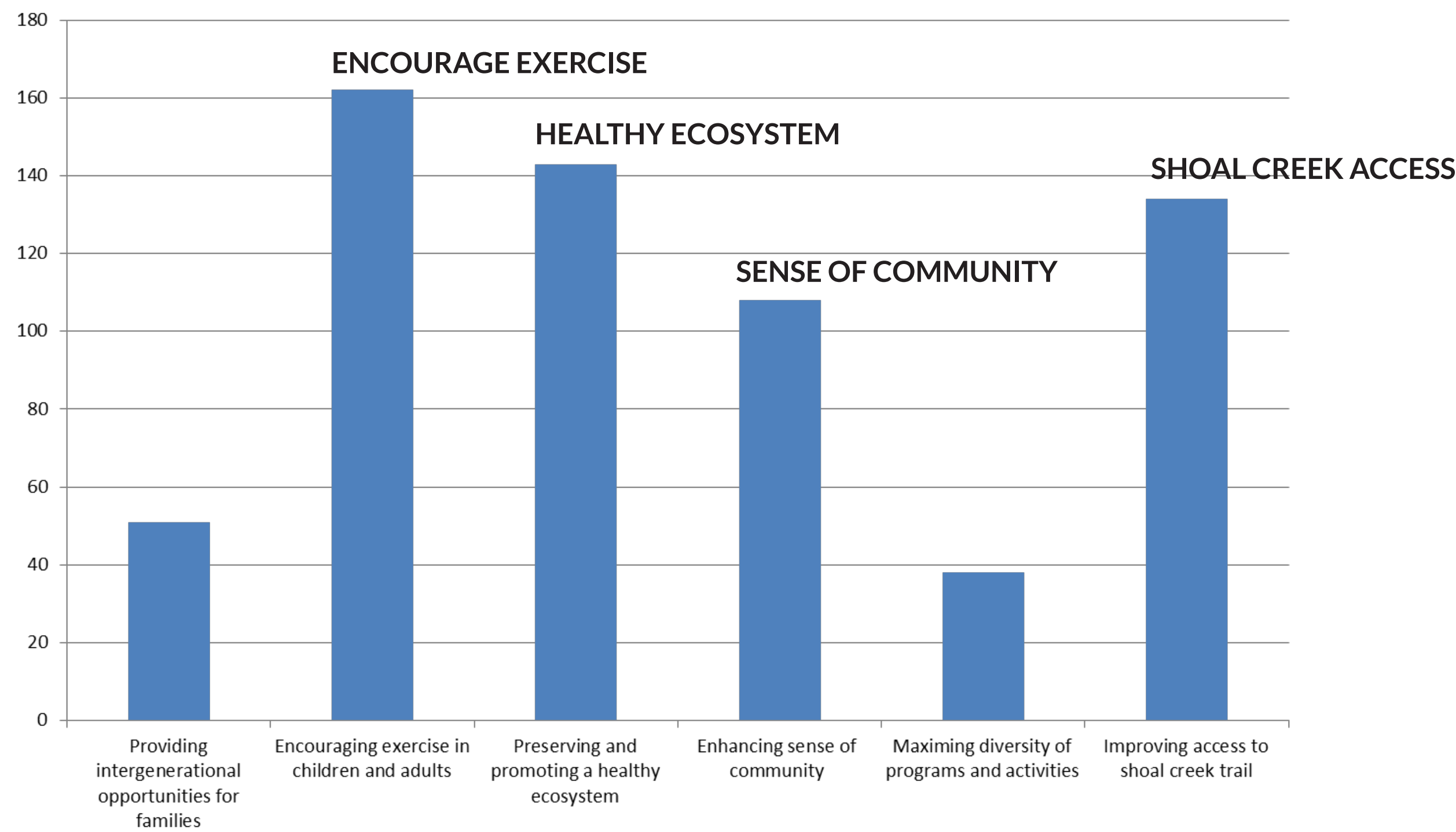
Which site features are most important to you ?





# 2014/2015 PUBLIC ENGAGEMENT

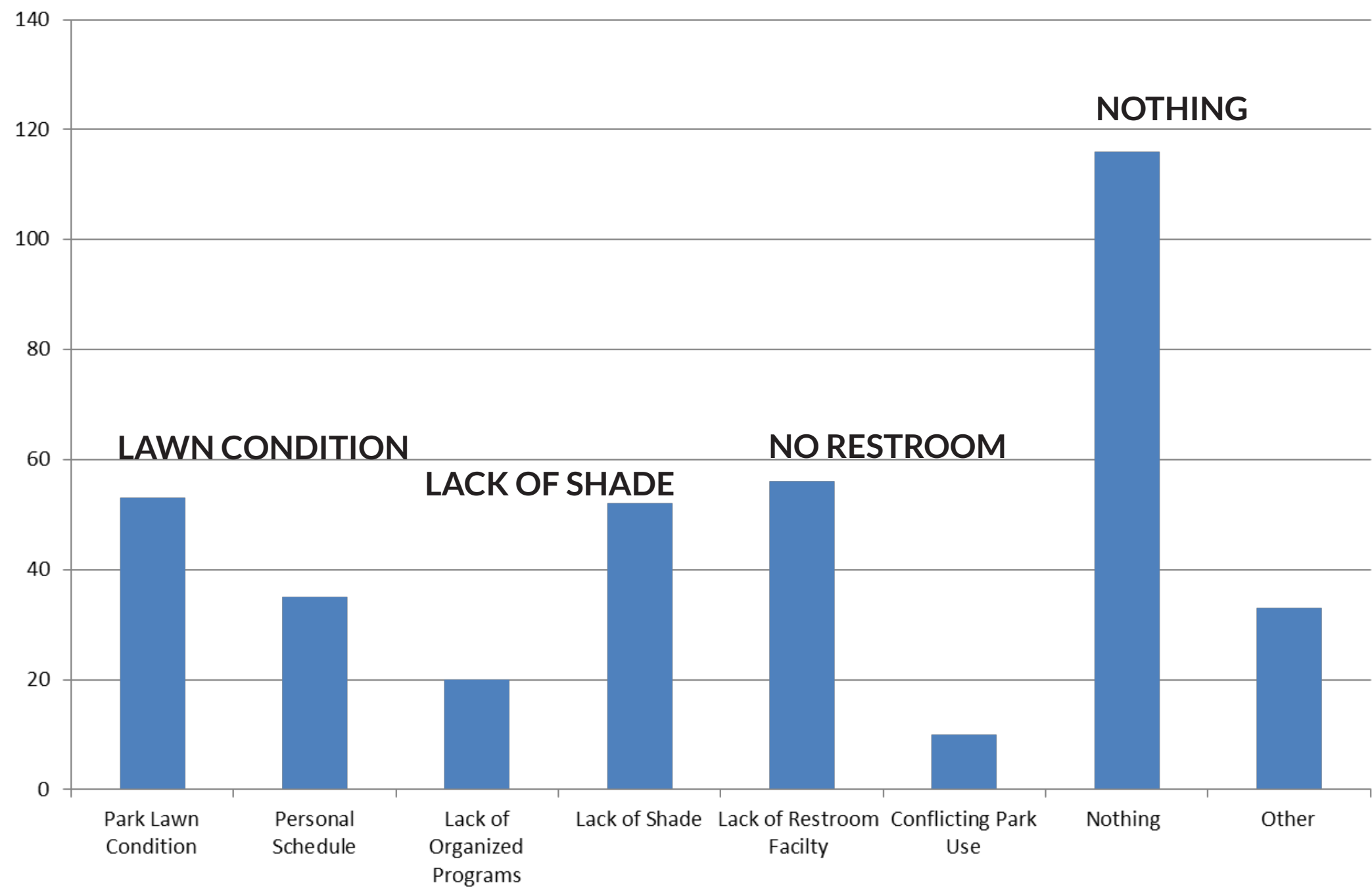
Which of the following qualities would you like to see accommodated at Duncan park?





# 2014/2015 PUBLIC ENGAGEMENT

What if anything currently discourages you from using duncan park please  
check all that apply

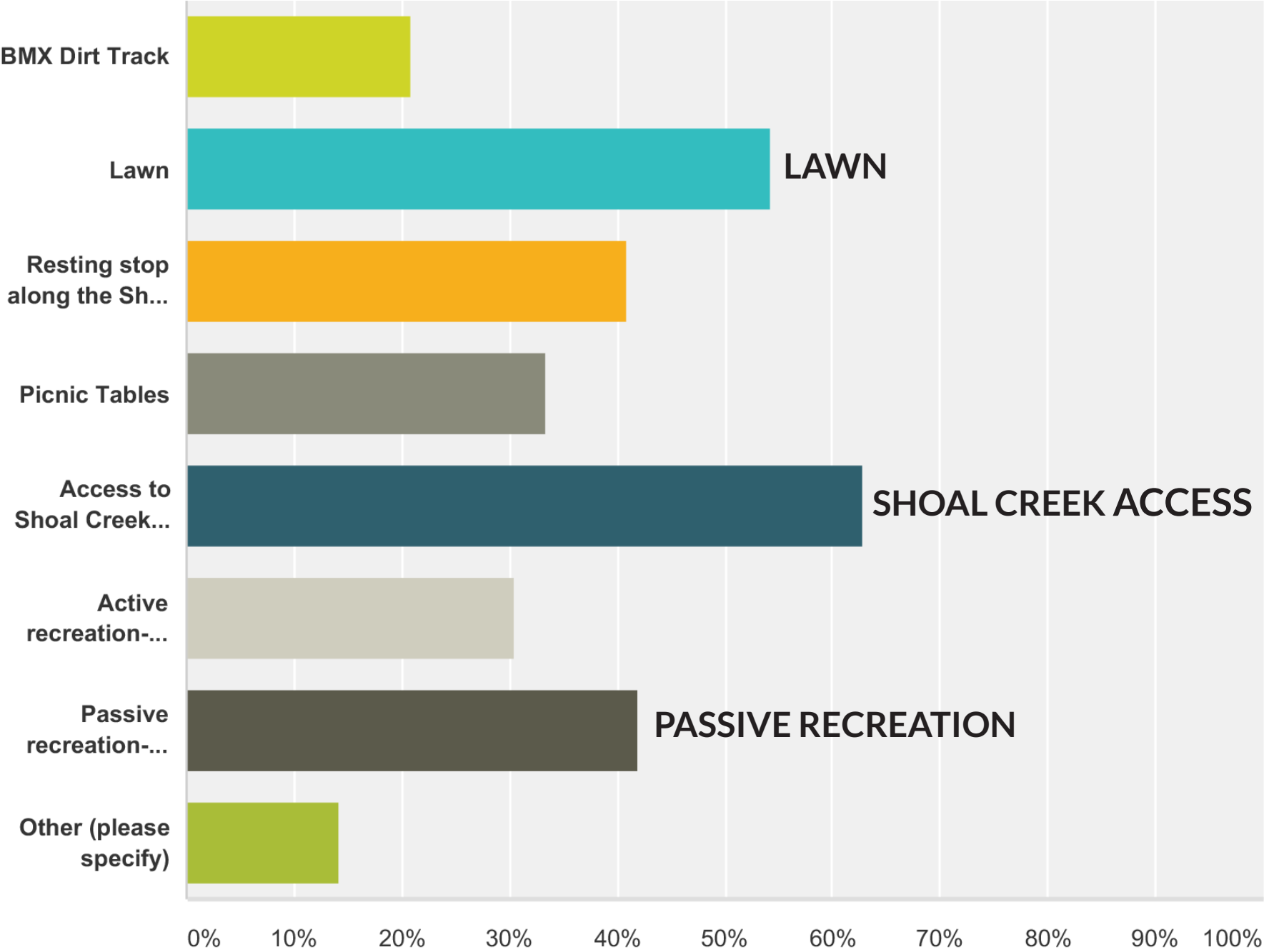




# 2016 PUBLIC ENGAGEMENT

## Q1 What existing features at Duncan Park do you currently utilize?

Answered: 105 Skipped: 0

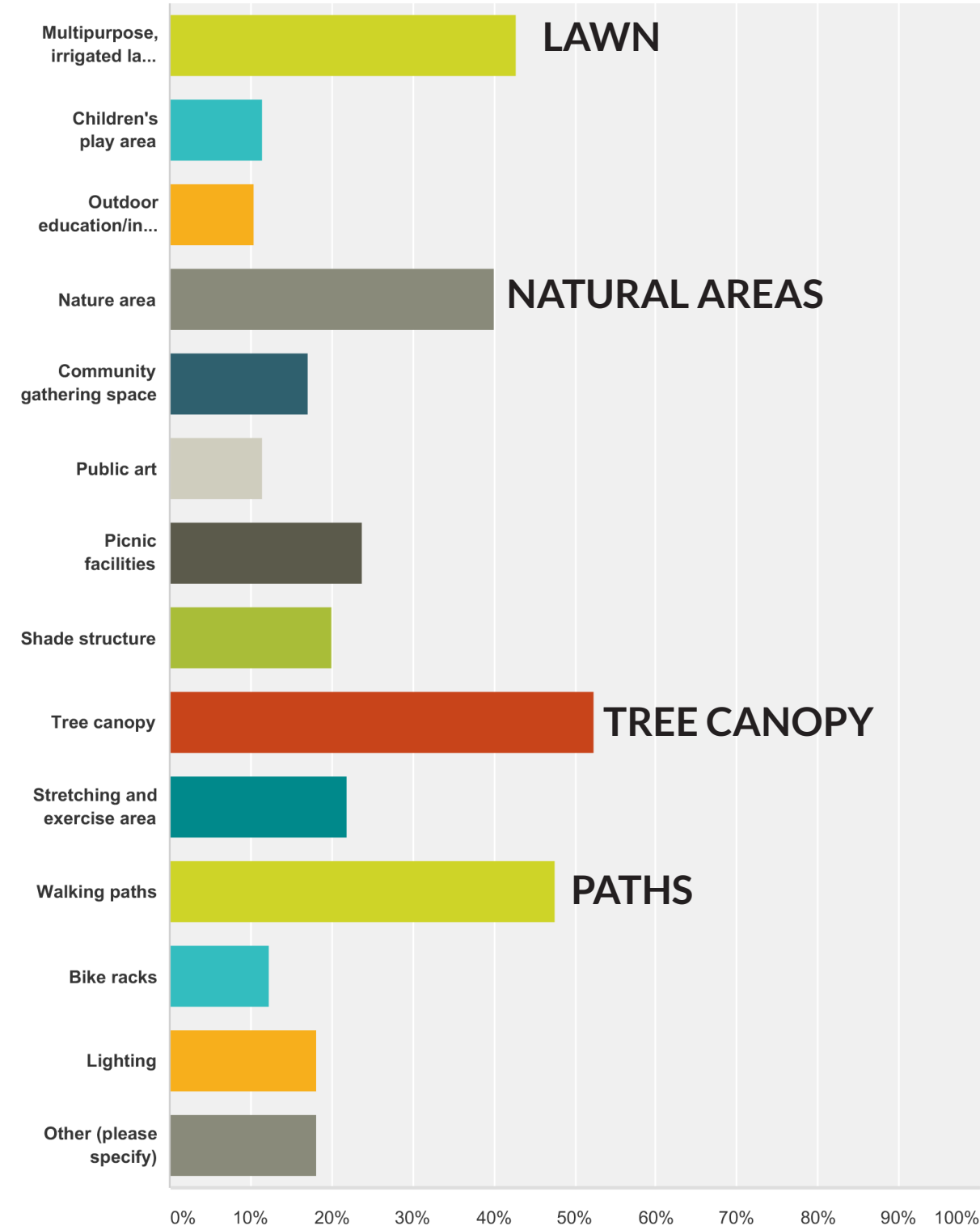




# 2016 PUBLIC ENGAGEMENT

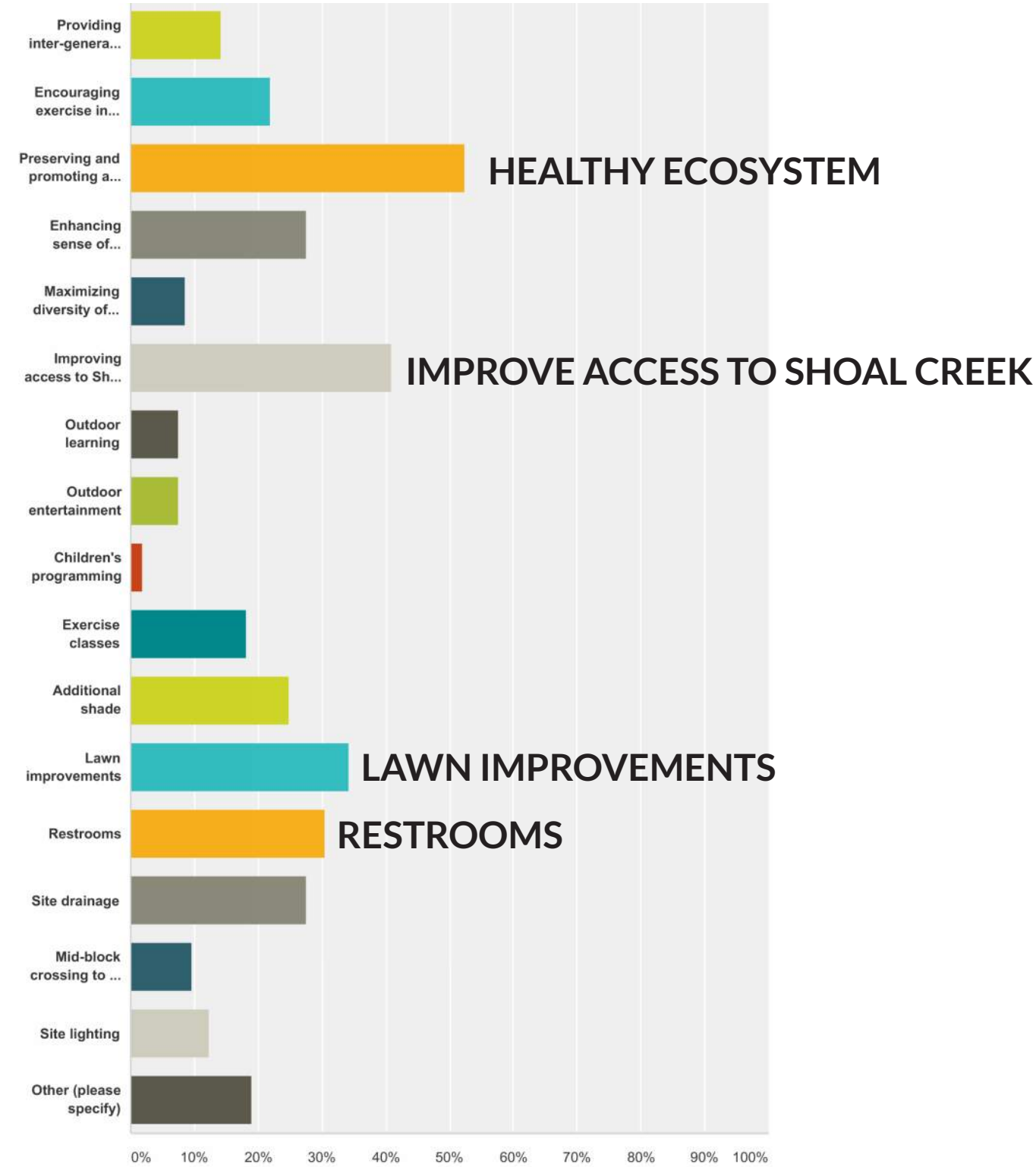
Q2 Which of the following site features are most important to you?

Answered: 105 Skipped: 0



Q3 Which of the following qualities or improvements would you like to see accommodated at Duncan Park?

Answered: 105 Skipped: 0





## AMENITY TRENDS

FLEX LAWN

NATURAL AREAS AND ECOSYSTEM  
IMPROVEMENTS

MORE TREES

IMPROVED PATHWAYS

RESTROOMS

PICNIC FACILITIES

OUTDOOR EXPLORATION

COMMUNITY GATHERING SPACE

STRETCHING AND EXERCISE AREA

CHILDRENS PLAY AREA

LIGHTING



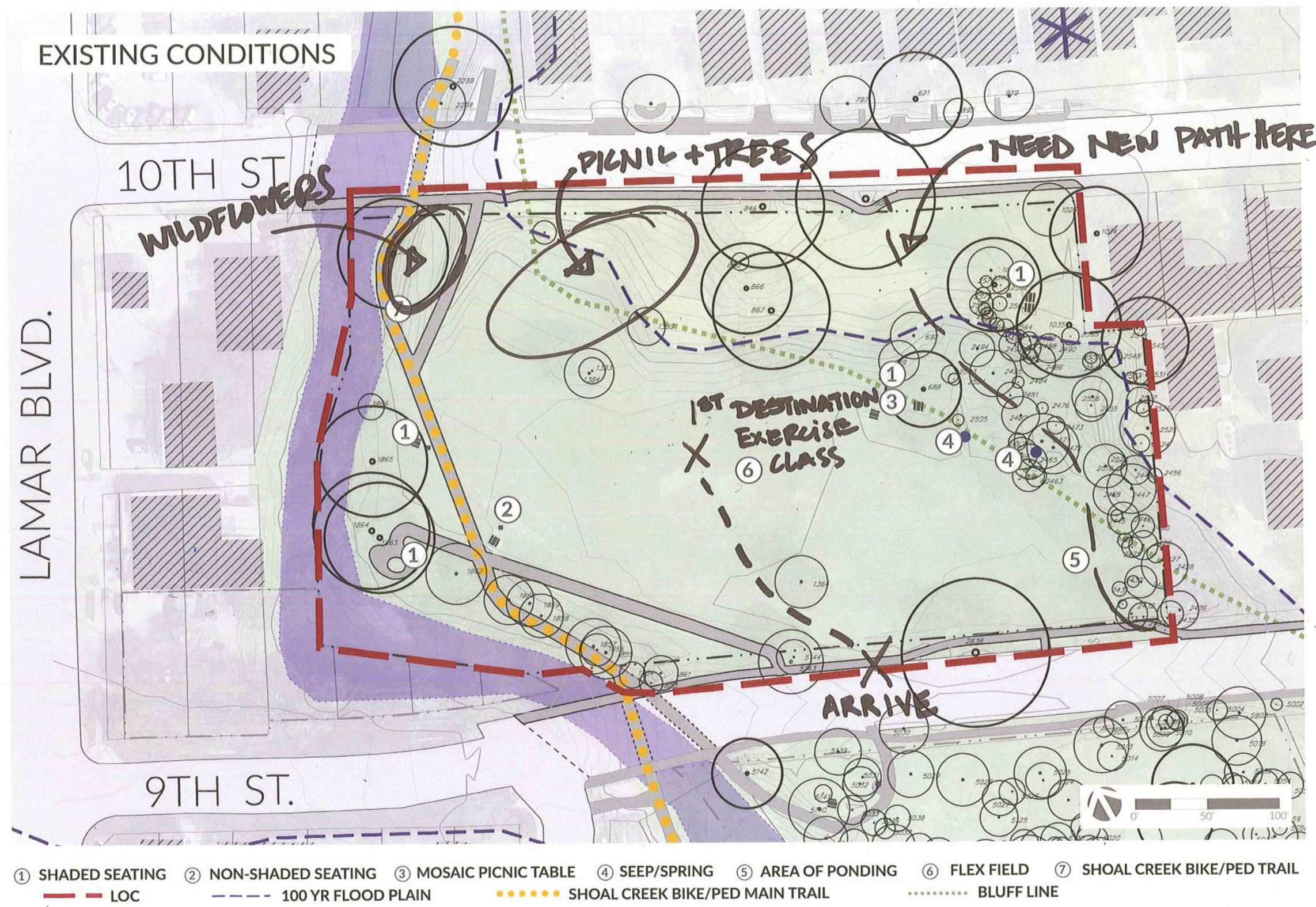


The background image shows a lush green park scene. In the upper left, a modern building with large glass windows is partially visible through the branches of trees. The foreground and middle ground are filled with dense green foliage, including various trees and bushes. A body of water, possibly a pond or a slow-moving stream, is visible in the lower right corner, reflecting the surrounding greenery. The overall atmosphere is peaceful and natural.

## SITE BRAINSTORM GROUP WORK

- LIST THREE WORDS THAT COME TO MIND WHEN YOU THINK OF DUNCAN PARK?
- WHERE DO YOU MOST OFTEN ENTER DUNCAN PARK?
- WHERE IS THE FIRST PLACE YOU GO?
- IF THERE WAS AN UNLIMITED BUDGET, WHAT WOULD YOU WISH TO SEE IN DUNCAN PARK?
- WHAT AREA NEEDS THE MOST IMPROVEMENT?





List three words that come to mind when you think of Duncan Park:

- OPEN
- UNDERUTILIZED
- CANOPY

Draw on the map to the left how you arrive to Duncan Park.

Where is the first place you go in the park once you arrive?  
I GO TO THE OPEN LAWN AREA.

If there was an unlimited budget what would you wish to see happen in Duncan Park?  
MORE CONNECTIVITY +  
ENHANCED NATIVE VEGETATION +  
A LARGE BANDSTAND

Which area needs the most improvement?  
THE PATH LACKS CONNECTIVITY TO THE PICNIC TABLES. THERE NEEDS TO BE MORE ADA PATHS.

dwg.