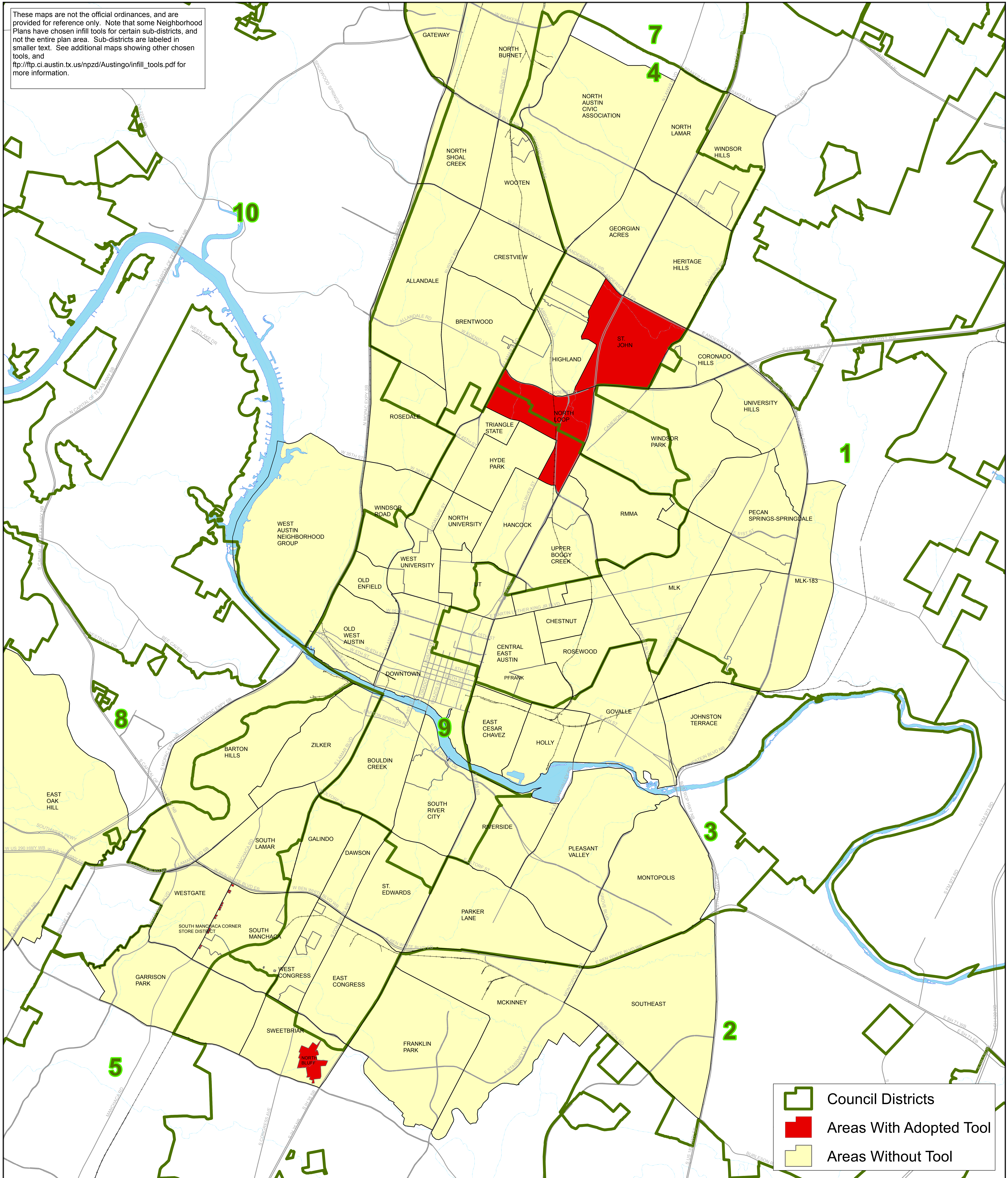


These maps are not the official ordinances, and are provided for reference only. Note that some Neighborhood Plans have chosen infill tools for certain sub-districts, and not the entire plan area. Sub-districts are labeled in smaller text. See additional maps showing other chosen tools, and ftp://ftp.ci.austin.tx.us/npzd/Austingo/infill_tools.pdf for more information.



Corner Store Infill Tool Chosen in Adopted Neighborhood Plans

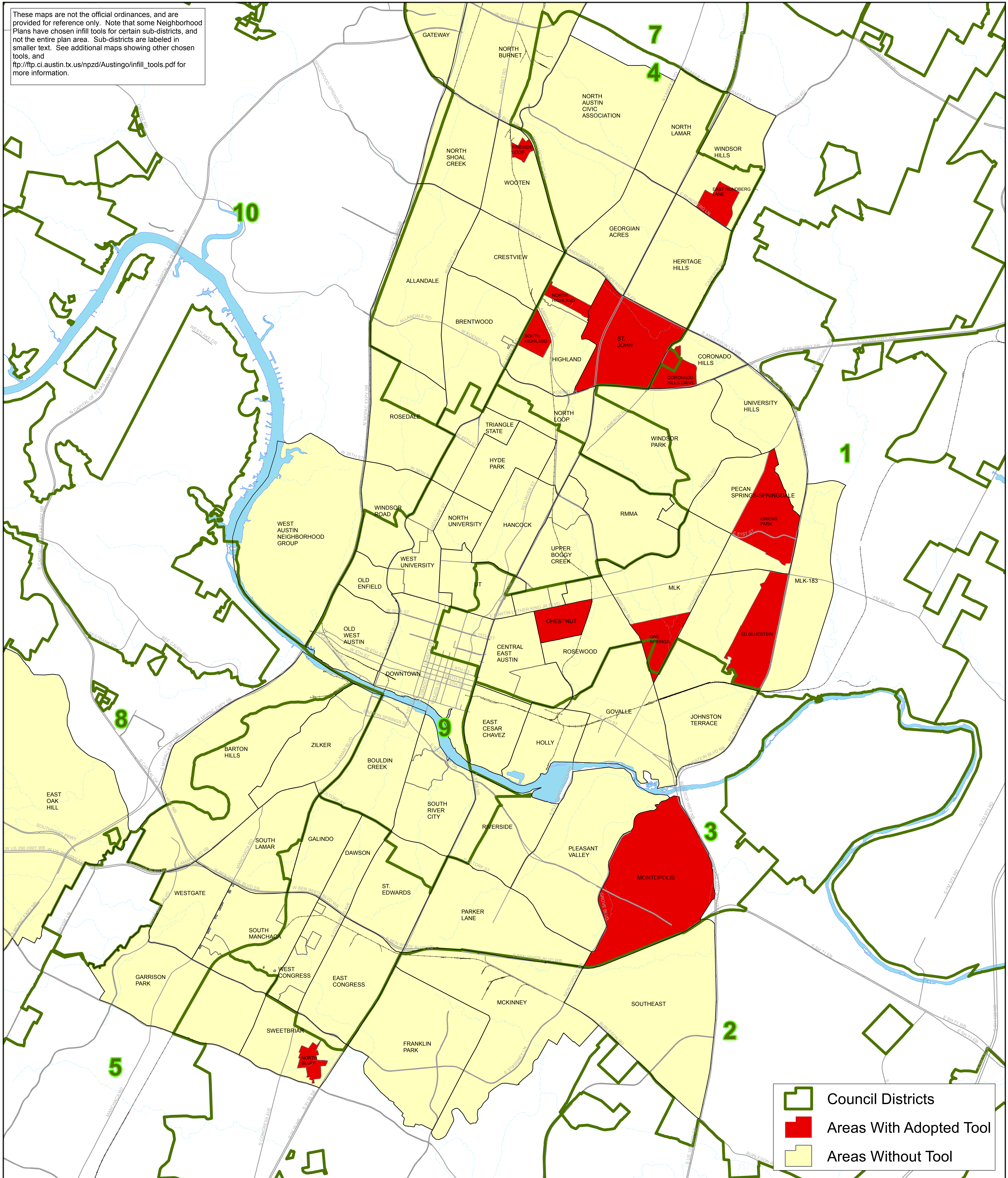
Created: Tuesday, November 10, 2015
File: corner_store_infilltool.mxd

This product has been produced by the City of Austin Planning and Zoning Department for informational and geographic reference purposes only, and may not have been prepared for or be suitable for legal, engineering, or surveying purposes. It does not represent an on-the-ground survey and represents only the approximate relative location of property boundaries. No warranty is made by the City of Austin regarding specific accuracy or completeness.



PLANNING AND ZONING DEPARTMENT

These maps are not the official ordinances, and are provided for reference only. Note that some Neighborhood Plans have chosen infill tools for certain sub-districts, and not the entire plan area. Sub-districts are labeled in smaller text. See additional maps showing other chosen tools, and ftp://ftp.ci.austin.tx.us/npzd/Austingo/infill_tools.pdf for more information.



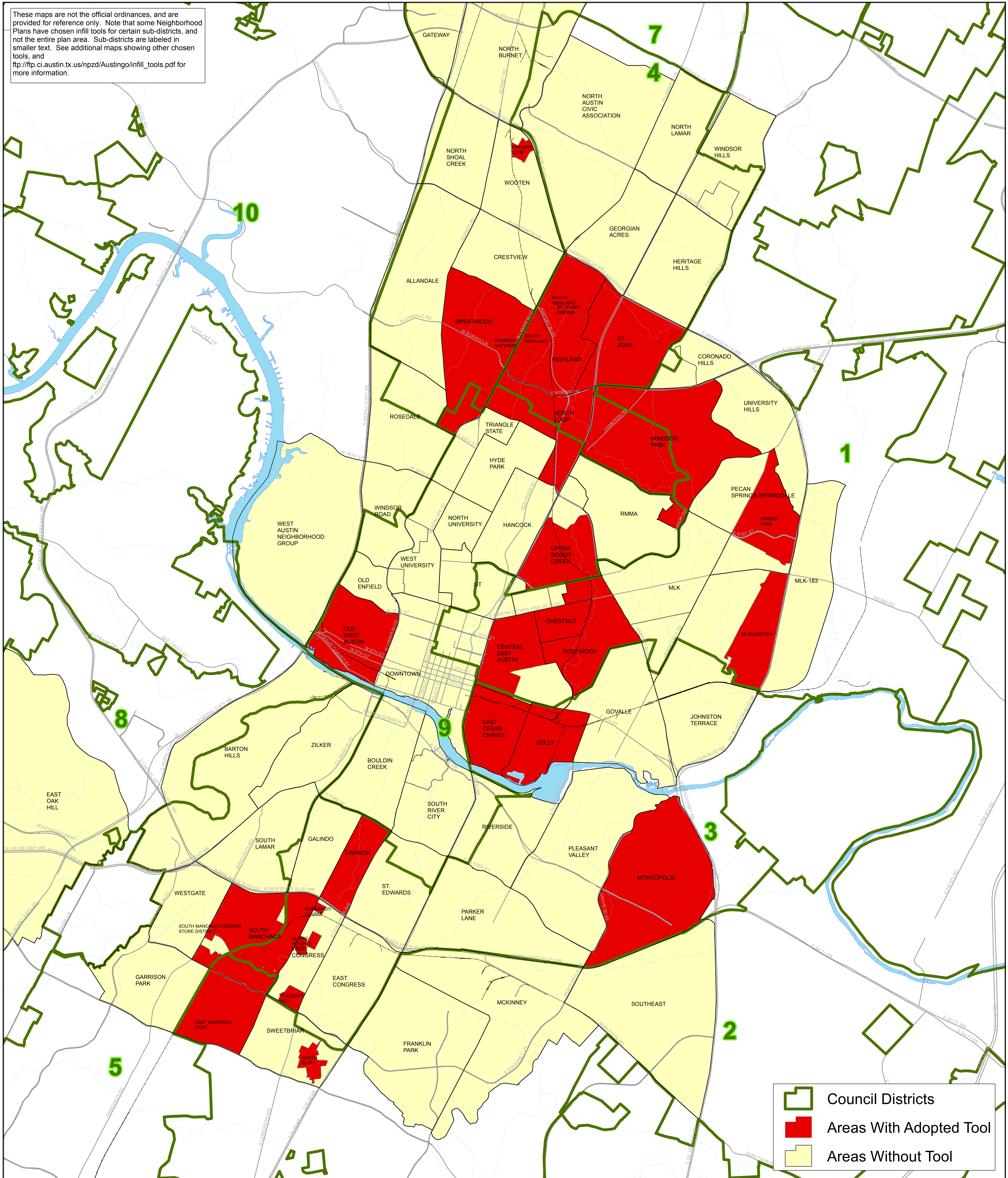
Cottage Lot Infill Tool Chosen in Adopted Neighborhood Plans

Created: Tuesday, November 10, 2015
File: cottage_lot_infilltool.mxd

This product has been produced by the City of Austin Planning and Zoning Department for informational and geographic reference purposes only, and may not have been prepared for or be suitable for legal, engineering, or surveying purposes. It does not represent an on-the-ground survey and represents only the approximate relative location of property boundaries. No warranty is made by the City of Austin regarding specific accuracy or completeness.



These maps are not the official ordinances, and are provided for reference only. Note that some Neighborhood Plans have chosen infill tools for certain sub-districts, and not the entire plan area. Sub-districts are labeled in smaller text. See additional maps showing other chosen tools, and ftp://ftp.ci.austin.tx.us/npzd/Austingo/infill_tools.pdf for more information.



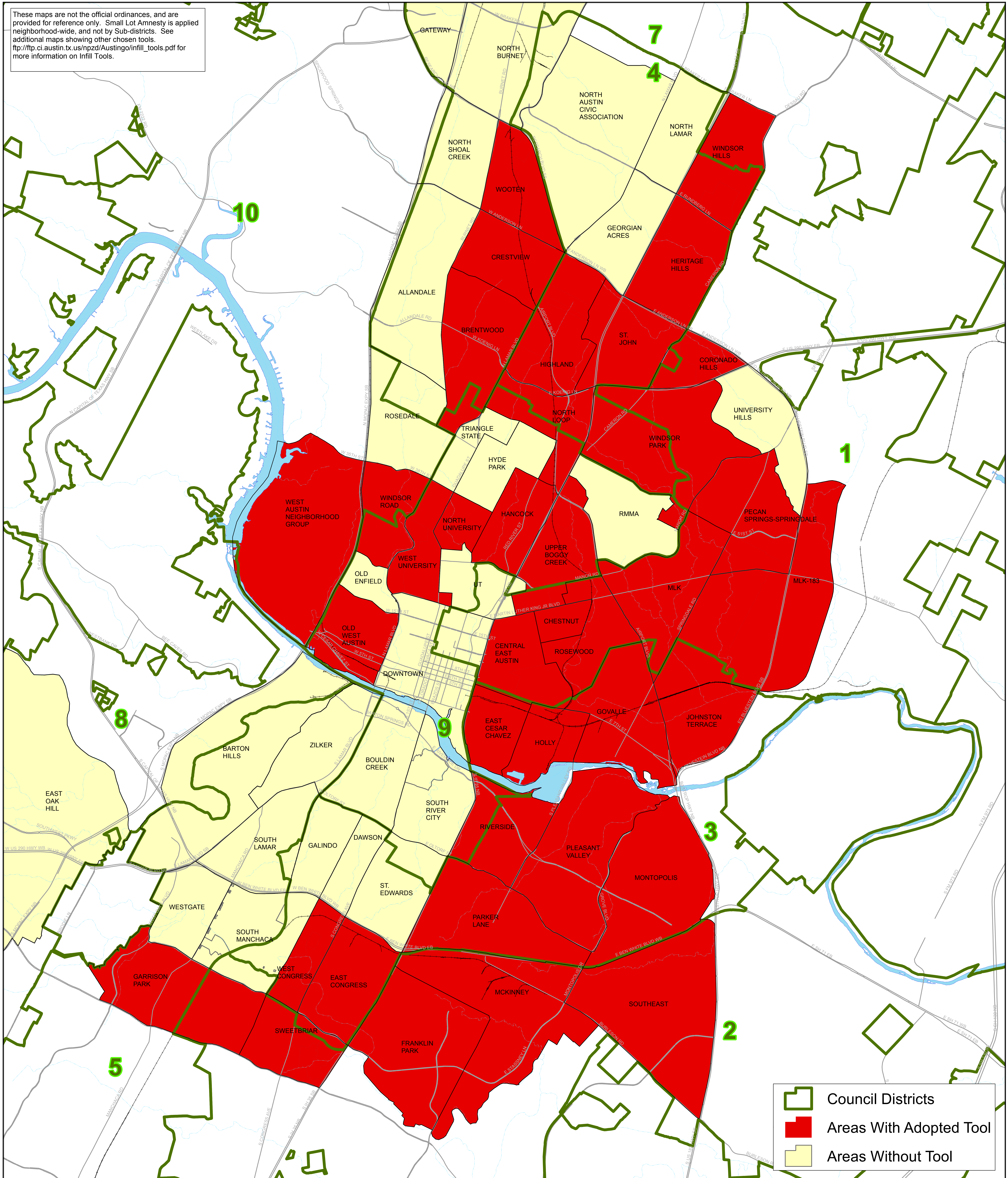
Secondary Apartment Infill Tool Chosen in Adopted Neighborhood Plans

Created: Tuesday, November 10, 2015
File: secondary_apartment_infilltool.mxd

This product has been produced by the City of Austin Planning and Zoning Department for informational and geographic reference purposes only, and may not have been prepared for or be suitable for legal, engineering, or surveying purposes. It does not represent an on-the-ground survey and represents only the approximate relative location of property boundaries. No warranty is made by the City of Austin regarding specific accuracy or completeness.



These maps are not the official ordinances, and are provided for reference only. Small Lot Amnesty is applied neighborhood-wide, and not by Sub-districts. See additional maps showing other chosen tools. ftp://ftp.ci.austin.tx.us/npzd/Austingo/infill_tools.pdf for more information on Infill Tools.



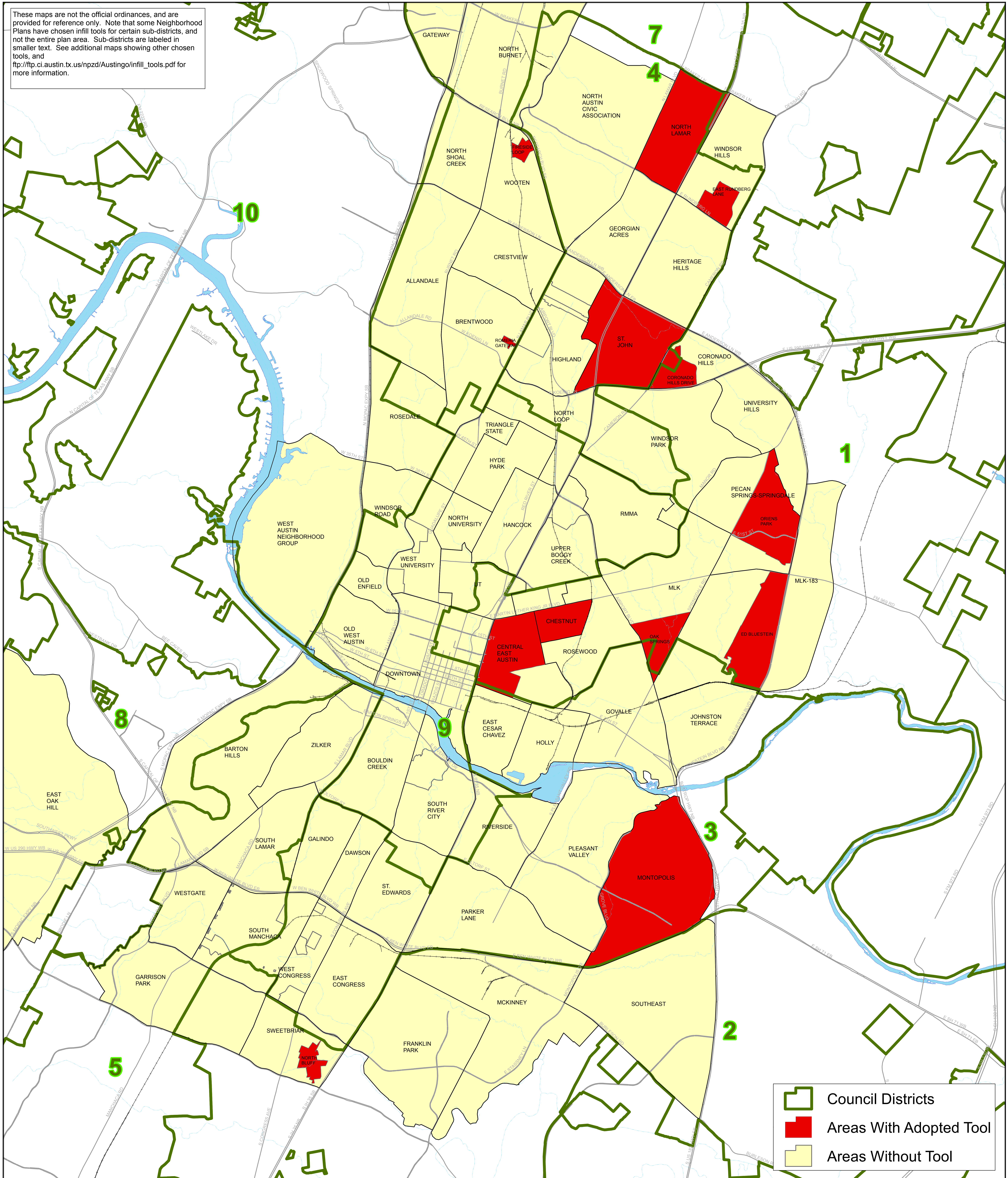
Small Lot Amnesty Infill Tool Chosen in Adopted Neighborhood Plans

Created: Tuesday, November 10, 2015
File: small_lot_amnesty_infilltool.mxd

This product has been produced by the City of Austin Planning and Zoning Department for informational and geographic reference purposes only, and may not have been prepared for or be suitable for legal, engineering, or surveying purposes. It does not represent an on-the-ground survey and represents only the approximate relative location of property boundaries. No warranty is made by the City of Austin regarding specific accuracy or completeness.



These maps are not the official ordinances, and are provided for reference only. Note that some Neighborhood Plans have chosen infill tools for certain sub-districts, and not the entire plan area. Sub-districts are labeled in smaller text. See additional maps showing other chosen tools, and ftp://ftp.ci.austin.tx.us/npzd/Austingo/infill_tools.pdf for more information.



Urban Home Infill Tool Chosen in Adopted Neighborhood Plans

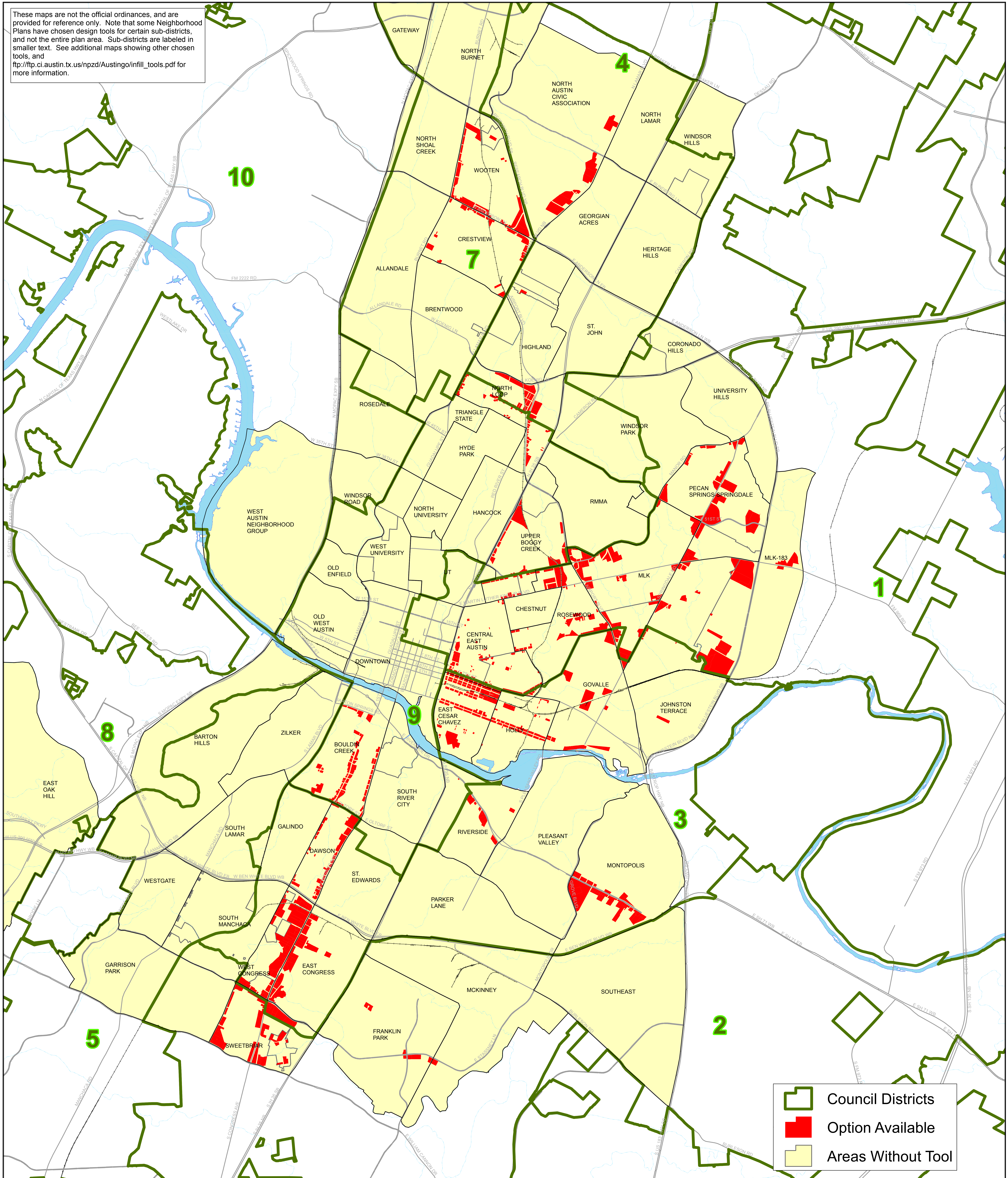
Created: Tuesday, November 10, 2015
File: urban_home_infilltool.mxd

This product has been produced by the City of Austin Planning and Zoning Department for informational and geographic reference purposes only, and may not have been prepared for or be suitable for legal, engineering, or surveying purposes. It does not represent an on-the-ground survey and represents only the approximate relative location of property boundaries. No warranty is made by the City of Austin regarding specific accuracy or completeness.



PLANNING AND ZONING DEPARTMENT

These maps are not the official ordinances, and are provided for reference only. Note that some Neighborhood Plans have chosen design tools for certain sub-districts, and not the entire plan area. Sub-districts are labeled in smaller text. See additional maps showing other chosen tools, and ftp://ftp.ci.austin.tx.us/npzd/Austingo/infill_tools.pdf for more information.



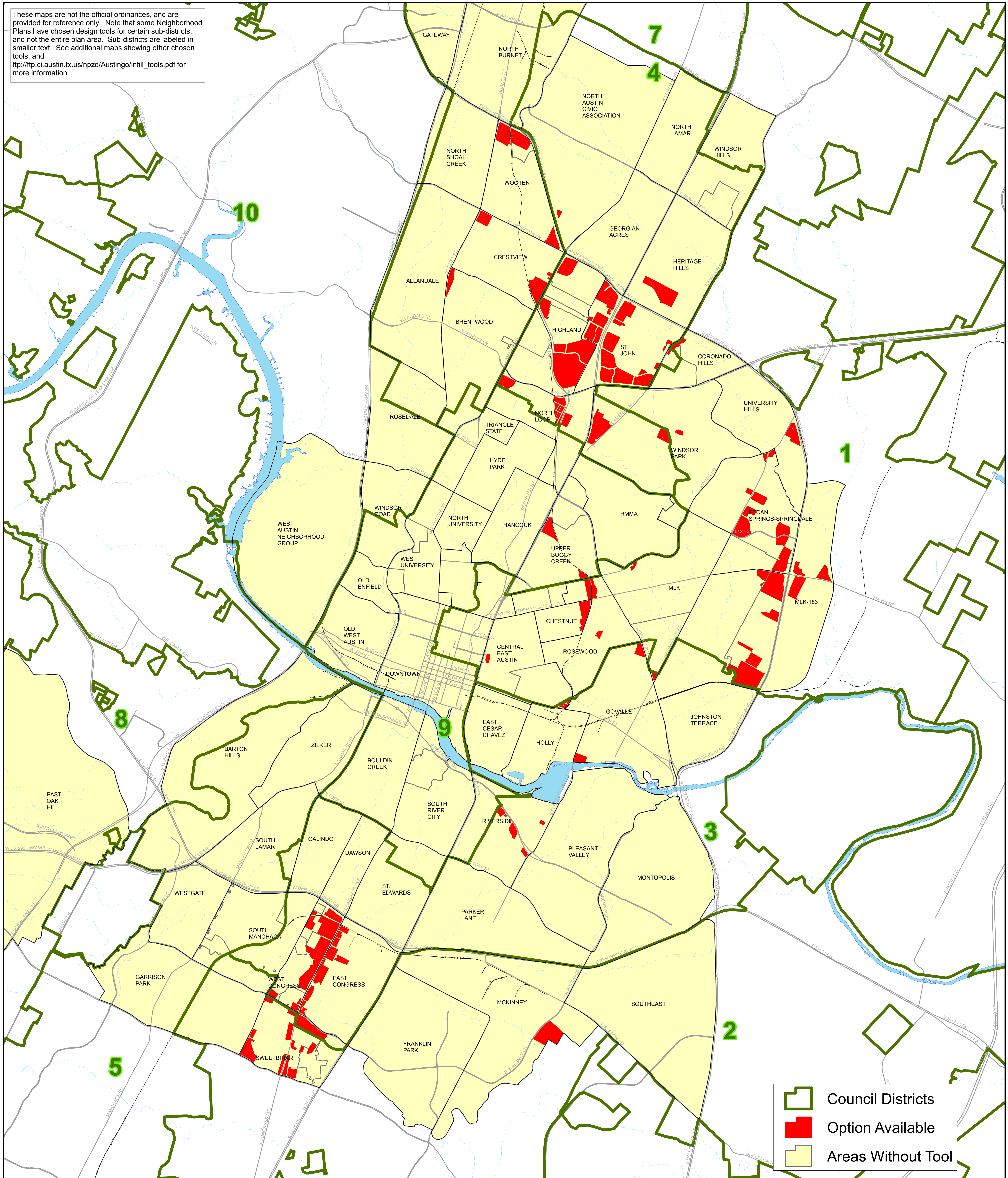
Parcels with Mixed Use Building Infill Option Tool in Adopted Neighborhood Plans

Created: Tuesday, November 10, 2015
File: mixed_use_building_infill_option.mxd

This product has been produced by the City of Austin Planning and Zoning Department for informational and geographic reference purposes only, and may not have been prepared for or be suitable for legal, engineering, or surveying purposes. It does not represent an on-the-ground survey and represents only the approximate relative location of property boundaries. No warranty is made by the City of Austin regarding specific accuracy or completeness.



These maps are not the official ordinances, and are provided for reference only. Note that some Neighborhood Plans have chosen design tools for certain sub-districts, and not the entire plan area. Sub-districts are labeled in smaller text. See additional maps showing other chosen tools, and ftp://ftp.ci.austin.tx.us/npzd/Austingo/infill_tools.pdf for more information.



Parcels with Neighborhood Urban Center Infill Option Tool in Adopted Neighborhood Plans

Created: Tuesday, November 10, 2015
File: neigh_urb_center_infill_option.mxd

This product has been produced by the City of Austin Planning and Zoning Department for informational and geographic reference purposes only, and may not have been prepared for or be suitable for legal, engineering, or surveying purposes. It does not represent an on-the-ground survey and represents only the approximate relative location of property boundaries. No warranty is made by the City of Austin regarding specific accuracy or completeness.



This map displays the City of Austin's Council Districts, each labeled with a green number from 1 to 10. The districts are outlined in dark green. Yellow-shaded areas represent regions where no design tool was chosen, while red-shaded areas indicate where an option was available. The map includes major roads, water bodies like the Colorado River, and various neighborhood names such as North Lamar, West University, and South Congress. A legend in the bottom right corner identifies the symbols used.

Legend:

- Council Districts
- Option Available
- Areas Without Tool

Parcels with Residential Infill Option Tool in Adopted Neighborhood Plans

Created: Tuesday, November 10, 2015
File: residential infill option.mxd



PLANNING AND ZONING DEPARTMENT

This product has been produced by the City of Austin Planning and Zoning Department for informational and geographic reference purposes only, and may not have been prepared for or be suitable for legal, engineering, or surveying purposes. It does not represent an on-the-ground survey and represents only the approximate relative location of property boundaries. No warranty is made by the City of Austin regarding specific accuracy or completeness.