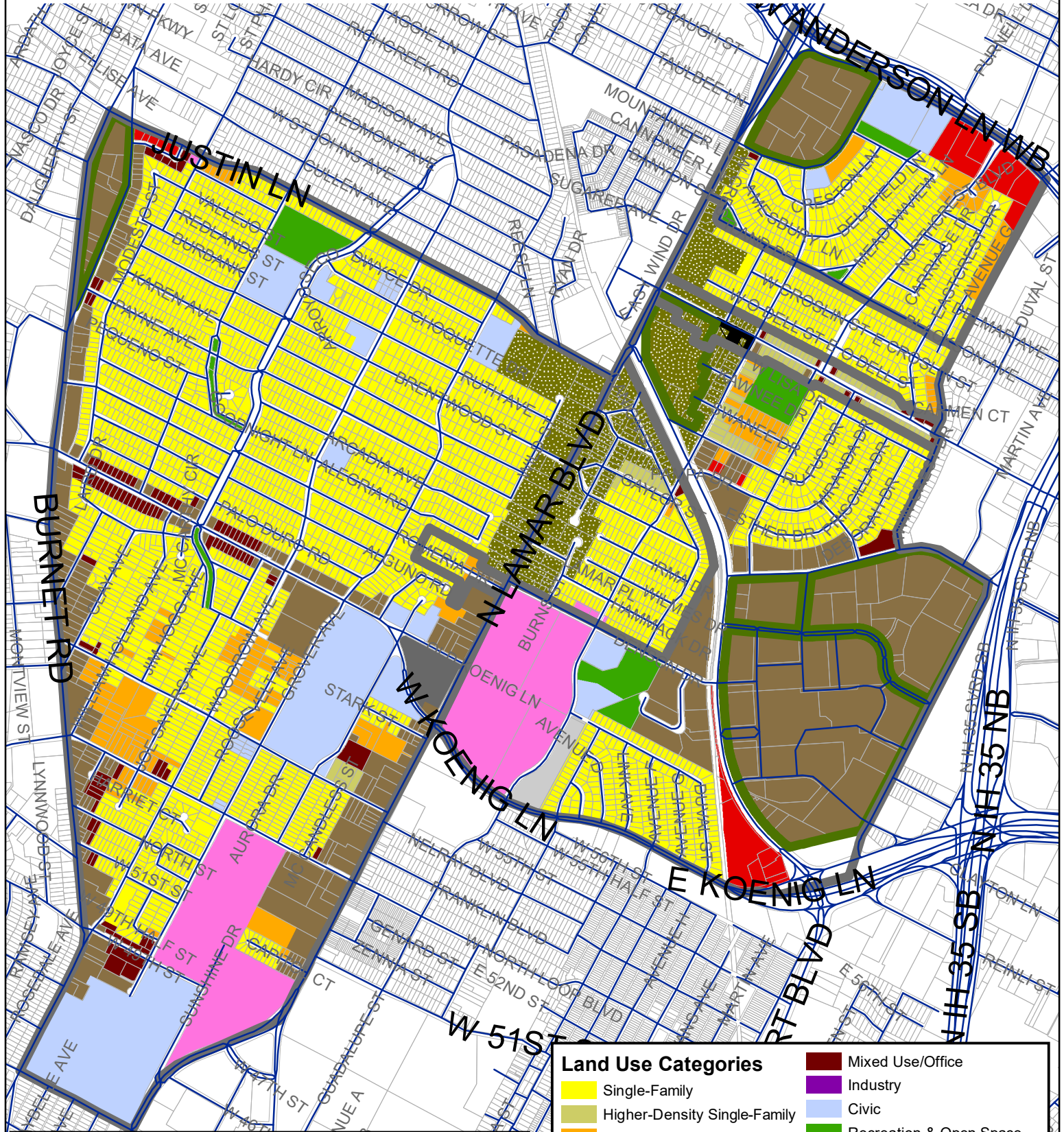


# Brentwood/Highland Neighborhood Planning Area Future Land Use Map



Adopted 5/13/2004 Last Revised 10/11/2012  
 City of Austin Planning and Development Review Department

A comprehensive plan shall not constitute zoning regulations or establish zoning district boundaries.

Please see the Brentwood/Highland Neighborhood Plan document for more detailed description of the vision and future land use for areas within the neighborhood.

This product is for informational purposes and may not have been prepared for or be suitable for legal, engineering, or surveying purposes. It does not represent an on-the-ground survey and represents only the approximate relative location of property boundaries.

This product has been produced by the Planning and Development Review Department for the sole purpose of geographic reference. No warranty is made by the City of Austin regarding specific accuracy or completeness.

Land Use Categories	
	Single-Family
	Higher-Density Single-Family
	Multifamily
	Commercial
	Mixed Use
	Specific Regulating District
	Office
	Mixed Use/Office
	Industry
	Civic
	Recreation & Open Space
	Transportation
	Utilities
	Water
	Neighborhood Urban Center
	Mixed Use Building