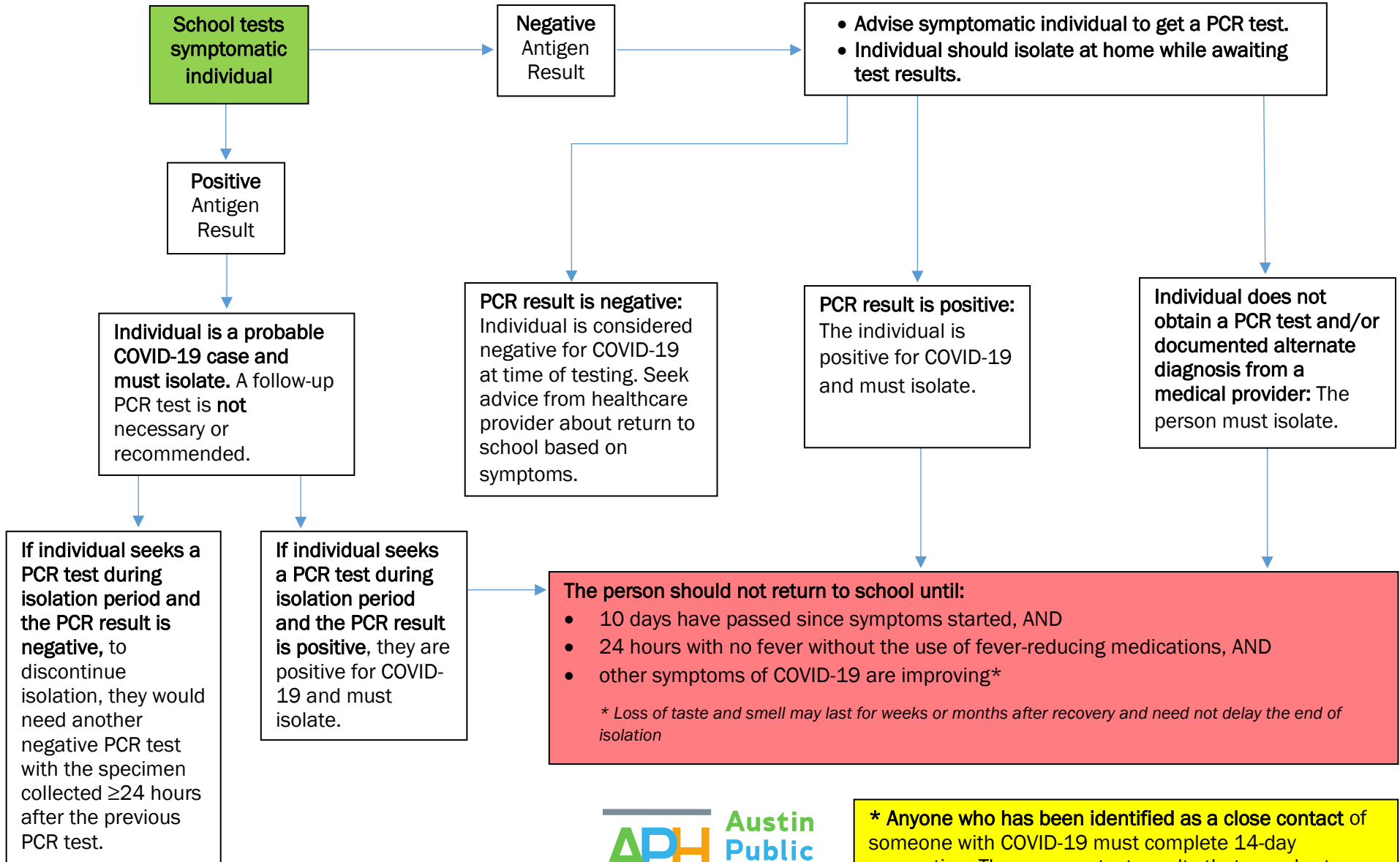




Austin Public Health Interim Guidance for Schools Administering Rapid Antigen Tests for **SYMPTOMATIC** Individuals*

11/9/2020

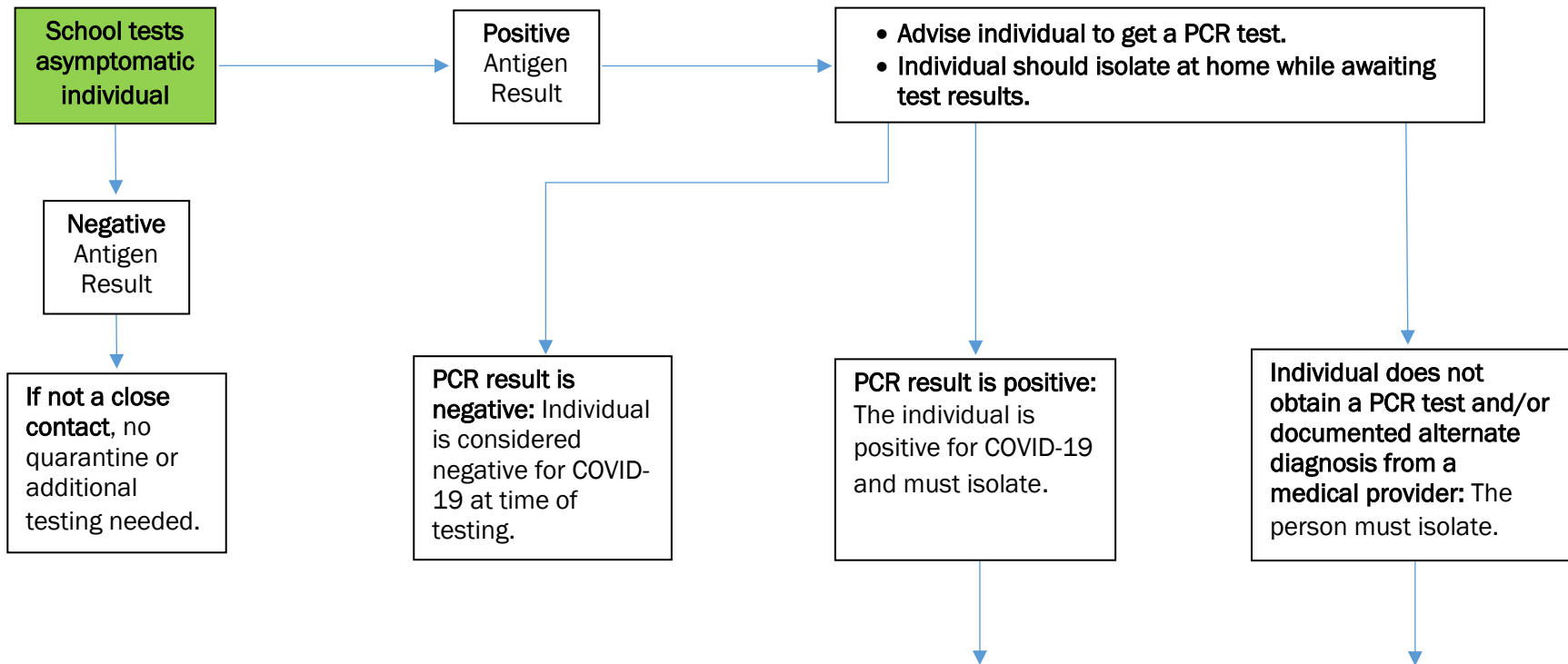


*** Anyone who has been identified as a close contact of someone with COVID-19 must complete 14-day quarantine. There are no test results that can shorten the 14-day quarantine period for close contacts.**



Austin Public Health Interim Guidance for Schools Administering Rapid Antigen Tests for **ASYMPTOMATIC** Individuals*

11/9/2020



* Anyone who has been identified as a close contact of someone with COVID-19 must complete 14-day quarantine. There are no test results that can shorten the 14-day quarantine period for close contacts. Asymptomatic close contacts should monitor for the development of symptoms.

Return to School
 For persons with COVID-19 who never develop symptoms, isolation and other precautions can be discontinued 10 days after the date of their first positive test for COVID-19.
 Persons who develop symptoms during the isolation period should meet criteria on the flow chart APH Guidance for Schools Administering Rapid Antigen Tests for SYMPTOMATIC Individuals before returning to school.