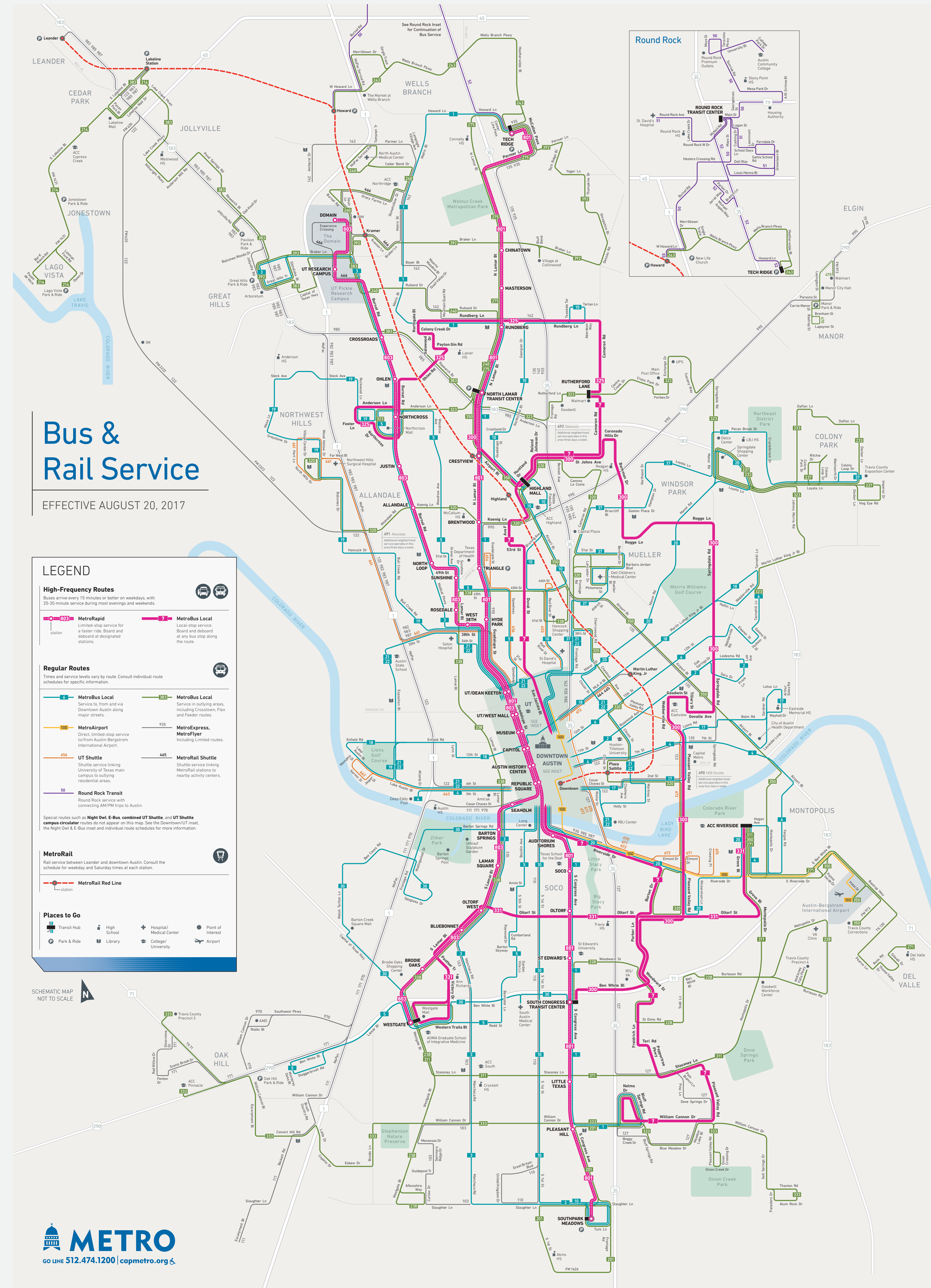
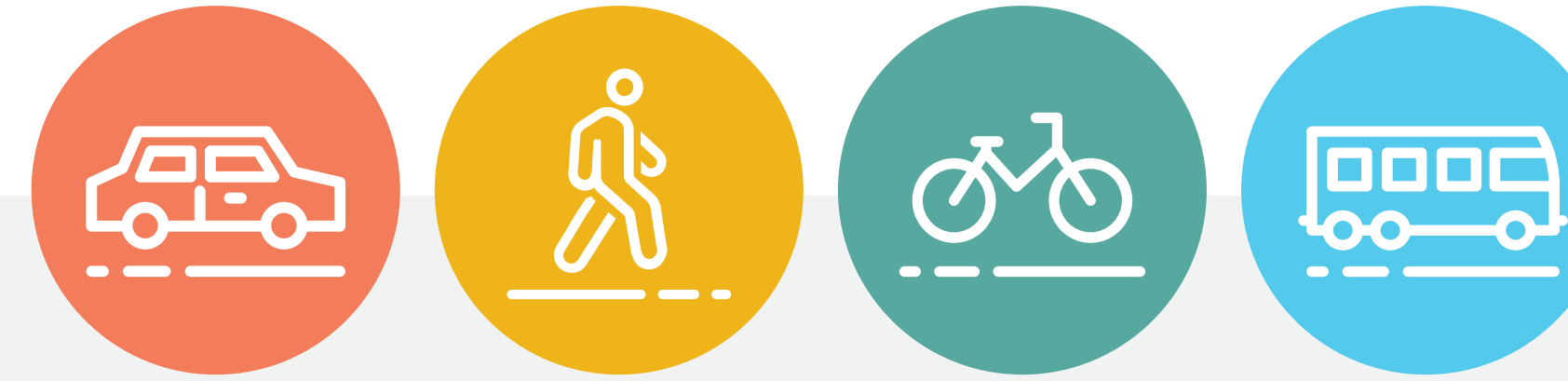
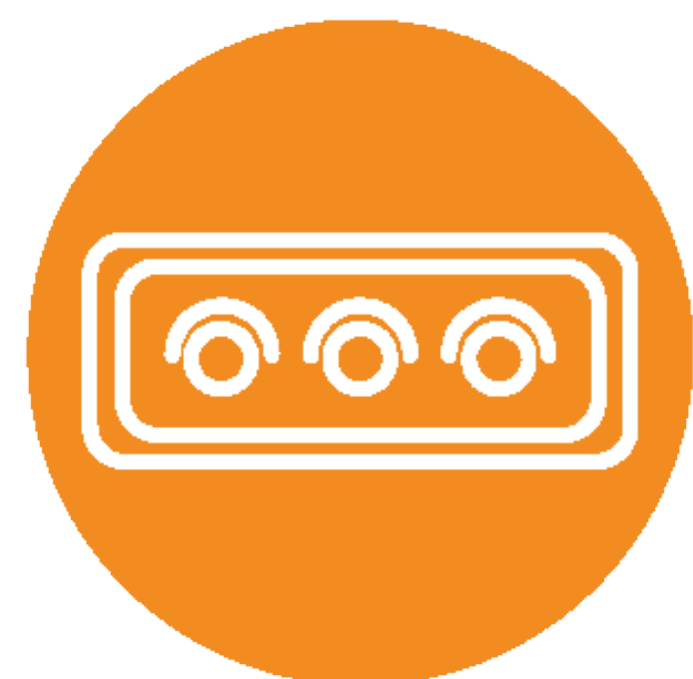


LOCAL PUBLIC TRANSIT



MANCHACA ROAD CORRIDOR MOBILITY PLAN

Comment Categories



INTERSECTION IMPROVEMENTS

signals / turn lanes / pedestrian crossings



SIDEWALKS AND CURB RAMPS

accessibility / crosswalks



BICYCLE FACILITIES

separated and protected bike lanes



TRANSIT-SUPPORTIVE IMPROVEMENTS

connectivity to bus stops / transit priority signalization



COMPLETE STREETS

street trees / parking / curb cuts / speed / green streets

Comment Methods



Roll Plot

Place stickers on the roll plot and write your comments.



Online

Go to PublicInput.com/Manchaca to share comments on a map of the study area.



Survey

Go to PublicInput.com/Manchaca to fill out a brief survey and/or leave general comments.

MANCHACA ROAD CORRIDOR MOBILITY PLAN

Crash Frequency (2014-2016) and Average Daily Traffic

TOP CRASH LOCATIONS

- 97 1. Slaughter Ln
- 57 2. Ben White Blvd
- 47 3. William Cannon Dr
- 37 4. Lamar Blvd
- 19 5. N of Stassney Ln

TOP BICYCLE ACTIVITY

- 48 1. Redd St
- 23 2. Lamar Blvd
- 17 3. Fortview
- 14 4. Jones Rd
- 12 5. Barton Skyway

TOP PEDESTRIAN ACTIVITY

- 161 1. Stassney Ln
- 128 2. Lamar Blvd
- 34 3. Jones Rd
- 31 4. Redd St
- 31 5. Berkeley

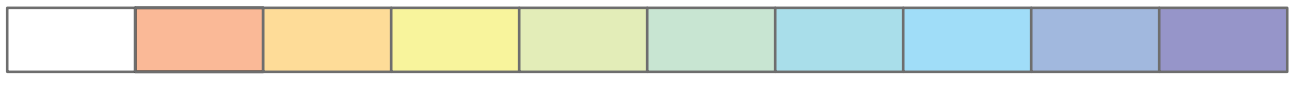
Legend

Manchaca Corridor ADT

- 18810 - 20000
- 20001 - 25000
- 25001 - 30000
- 30001 - 35000

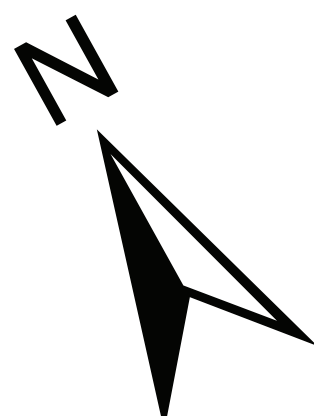
0 1,000 2,000 4,000 Feet

Manchaca Corridor Crashes per Square Feet (2014-2016)



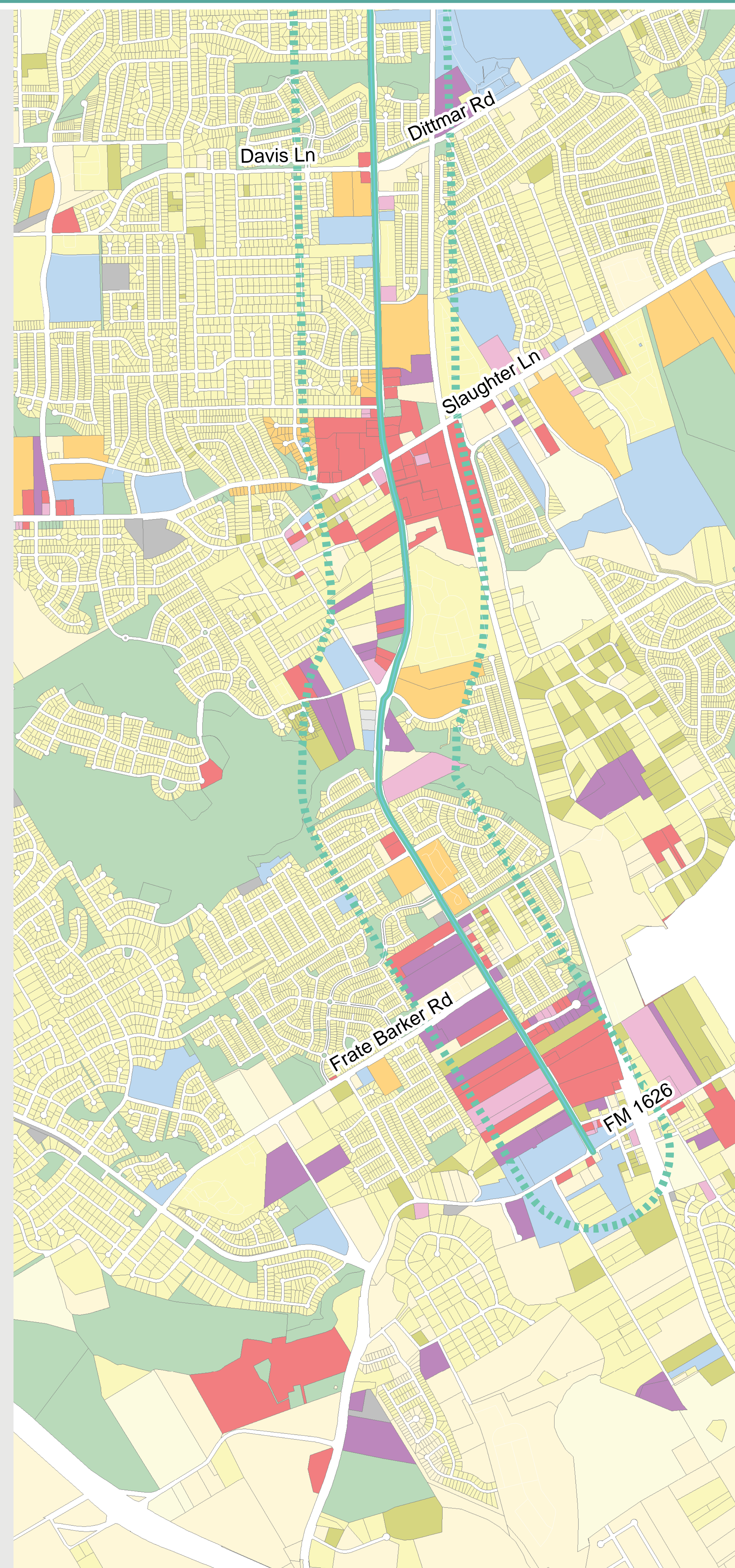
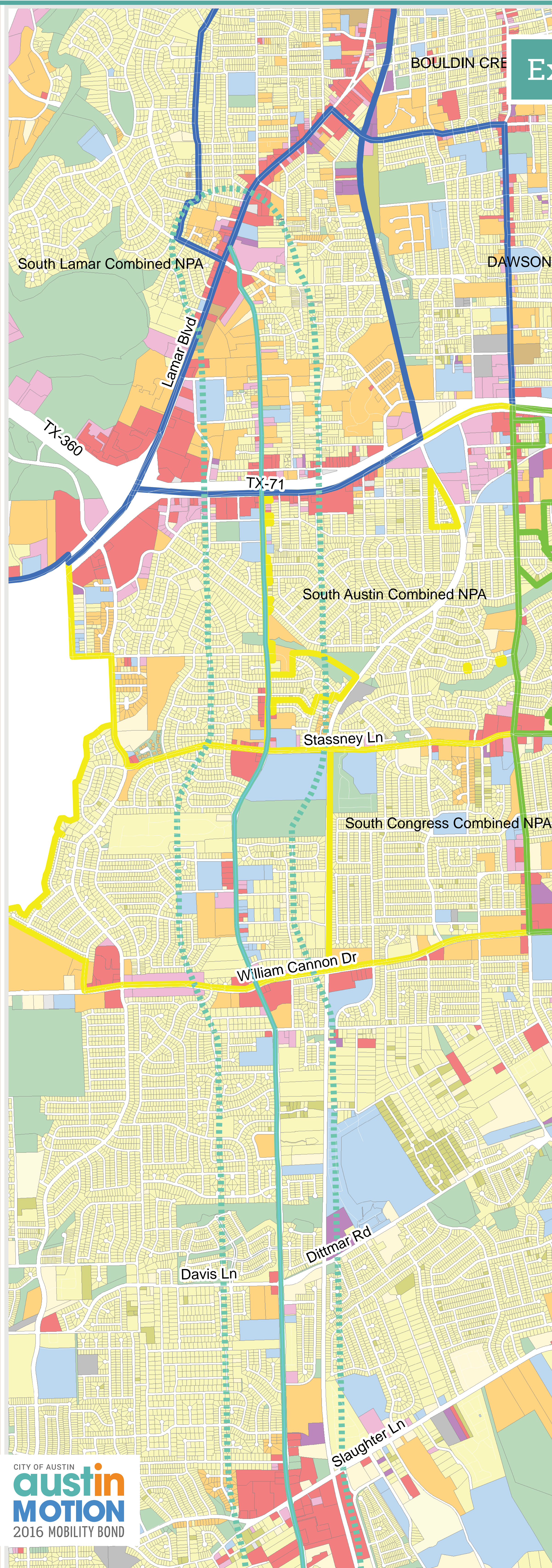
Low Frequency

High Frequency



MANCHACA ROAD CORRIDOR MOBILITY PLAN

Existing Land Use and Neighborhood Plan Areas



Neighborhood Planning Areas

- Oak Hill Combined NPA
- South Austin Combined NPA
- South Congress Combined NPA
- South Lamar Combined NPA

Existing Land Use

- Single Family
- Mobile Homes
- Large Lot Single Family
- Multi-family

- Commercial
- Mixed Use
- Office
- Industrial

- Civic
- Open Space and Parks
- Transportation
- Utilities
- Undeveloped

1/4 Mile

0 0.25 0.5 1 Miles



MANCHACA ROAD CORRIDOR MOBILITY PLAN



WINTER 2017

- Gather mobility data, including traffic counts and crash data
- Inform the community about our process
- Collect public input on needs and existing conditions
- First series of public meetings

SPRING 2018

- Analyze public input
- Develop preliminary recommendations for improvements to be included in the Corridor Mobility Plans

SUMMER 2018

- Presentation of preliminary recommendations to the public to obtain feedback
- Second series of public meetings

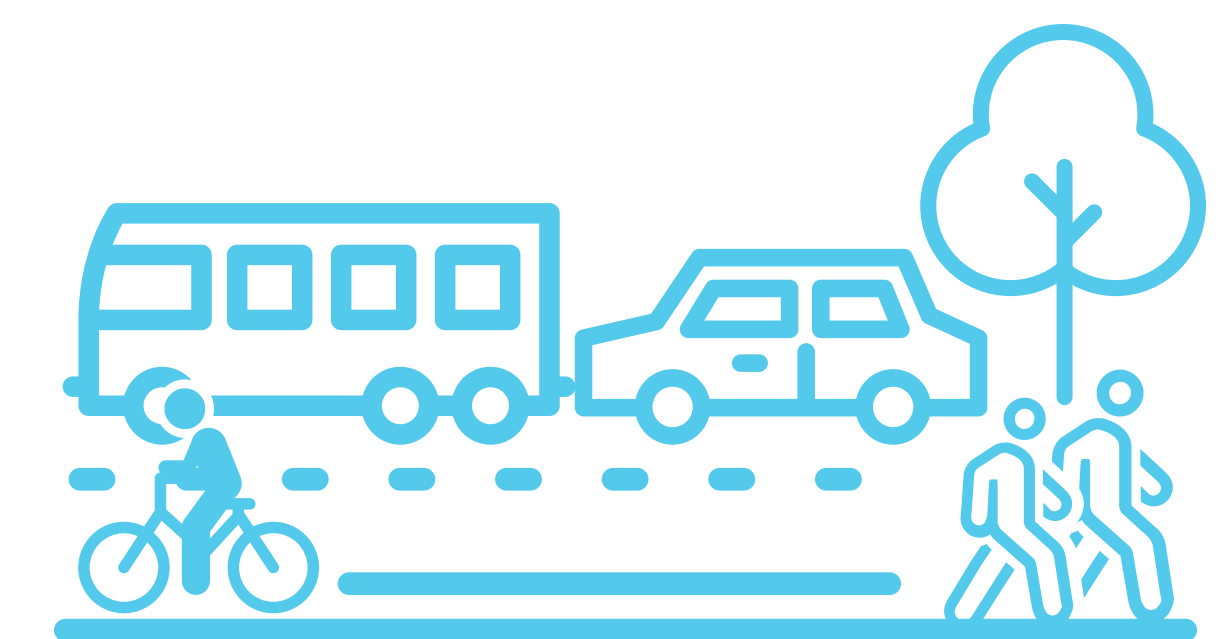
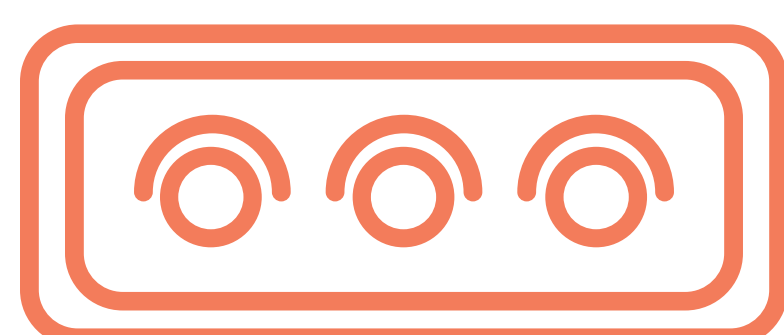
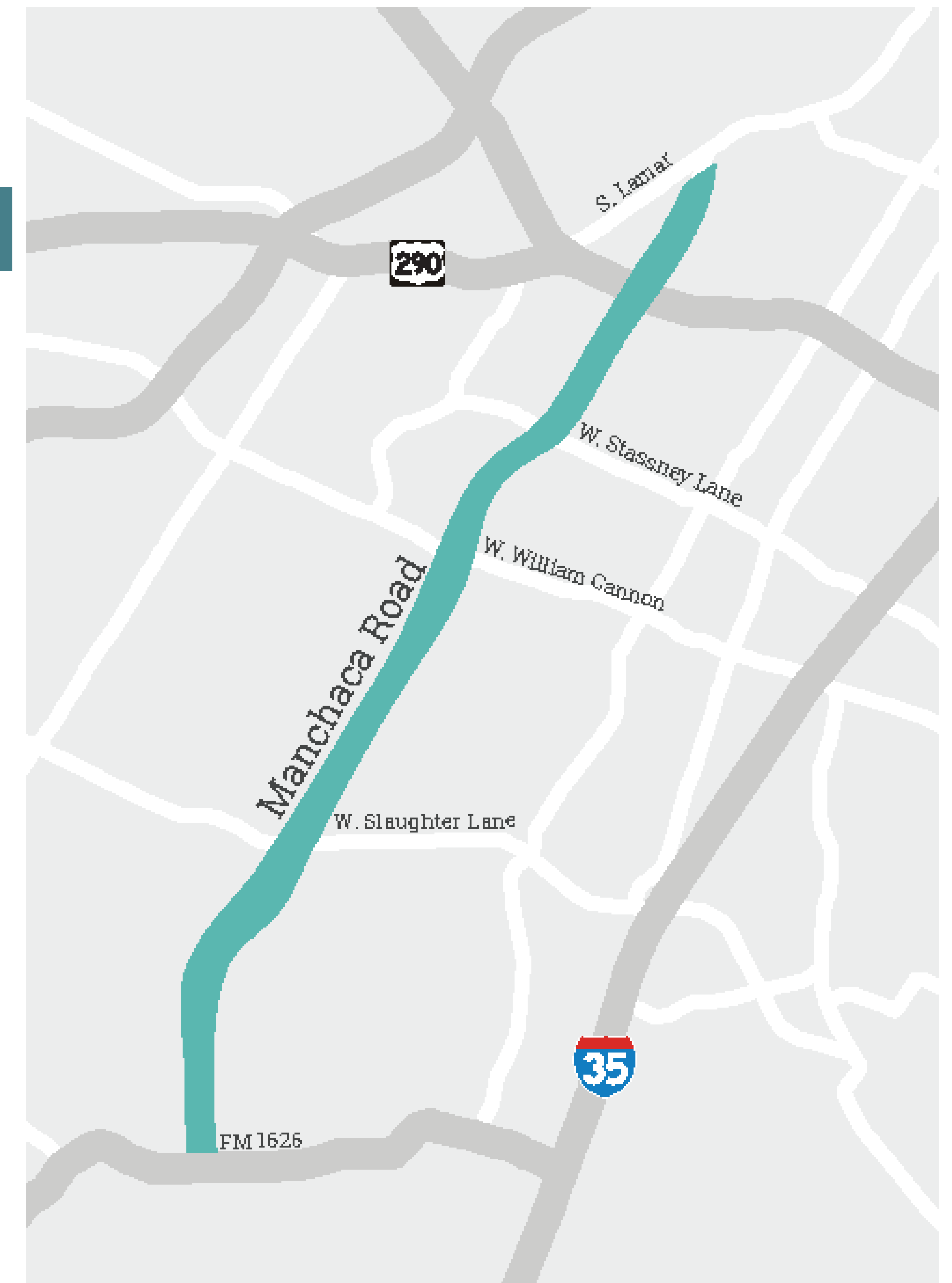
WINTER 2018

- Recommendations for all Corridor Mobility Plans will be internally vetted and finalized
- Recommendations will be shared online and through other stakeholder notifications

In November 2016, Austin voters approved \$720 million for local, corridor, and regional mobility improvements. The largest portion is earmarked for the Corridor Mobility Program.

As part of the Corridor Mobility Program, the City of Austin is working closely with the community to develop a Corridor Mobility Plan - or preliminary engineering report - for Manchaca Road. Corridor Mobility Plans identify recommendations to enhance safety, mobility and connectivity for all users, whether you drive, walk, bike or take transit.

The Manchaca Road Corridor Mobility Plan area boundaries begin at South Lamar Boulevard and continue south to FM 1626.



MANCHACA ROAD CORRIDOR MOBILITY PLAN

Place your dot on the scale below. Is travel through or travel within the corridor most important to you?

