

**Austin-Bergstrom International Airport
Aviation Activity Report
Calendar Year 2021 vs 2020**

Combined Terminals

	5/2021	5/2020	Percent Change	1/2021 - 5/2021	1/2020 - 5/2020	Percent Change
ABIA						
Total Passenger Activity						
Domestic Enplaned Revenue	526,298	56,118	837.84%	1,603,948	1,532,760	4.64%
Domestic Deplaned Revenue	506,500	54,962	821.55%	1,592,688	1,556,269	2.34%
International Enplaned Revenue	7,197	0	0.00%	16,956	30,817	-44.98%
International Deplaned Revenue	6,854	0	0.00%	16,651	34,001	-51.03%
Domestic Enplaned Non-Revenue	11,115	4,812	130.99%	42,962	49,238	-12.75%
Domestic Deplaned Non-Revenue	10,813	4,397	145.92%	41,804	45,785	-8.69%
International Enplaned Non-Revenue	50	0	0.00%	128	481	-73.39%
International Deplaned Non-Revenue	25	0	0.00%	65	409	-84.11%
Intl Enplaned Pre-Cleared Revenue	0	0	0.00%	0	5,483	-100.00%
Intl Deplaned Pre-Cleared Revenue	0	0	0.00%	0	4,626	-100.00%
Intl Enplaned Pre-Cleared Non-Revenue	0	0	0.00%	0	108	-100.00%
Intl Deplaned Pre-Cleared Non-Revenue	0	0	0.00%	0	100	-100.00%
South Terminal Domestic Enplaned Revenue	19,096	5,124	272.68%	63,381	70,484	-10.08%
South Terminal Domestic Deplaned Revenue	18,612	5,321	249.78%	62,764	73,953	-15.13%
South Terminal Domestic Enplaned Non-Revenue	71	50	42.00%	275	356	-22.75%
South Terminal Domestic Deplaned Non-Revenue	79	42	88.10%	299	334	-10.48%
ABIA Passenger Totals	1,106,710	130,826	745.94%	3,441,921	3,405,204	1.08%
<i>ABIA Enplaned Passenger Totals</i>	<i>563,827</i>	<i>66,104</i>	<i>752.94%</i>	<i>1,727,650</i>	<i>1,689,727</i>	<i>2.24%</i>
<i>ABIA Deplaned Passenger Totals</i>	<i>542,883</i>	<i>64,722</i>	<i>738.79%</i>	<i>1,714,271</i>	<i>1,715,477</i>	<i>-0.07%</i>
<i>ABIA Domestic Passenger Totals</i>	<i>1,092,584</i>	<i>130,826</i>	<i>735.14%</i>	<i>3,408,121</i>	<i>3,329,179</i>	<i>2.37%</i>
<i>ABIA International Passenger Totals</i>	<i>14,126</i>	<i>0</i>	<i>0.00%</i>	<i>33,800</i>	<i>76,025</i>	<i>-55.54%</i>

CURRENT PASSENGER RECORD = 1,643,016 RECORD SET = JULY 2019

Total Aircraft Operations

Air Carrier	9,897	2,995	230.45%	35,985	38,799	-7.25%
Commuter & Air Taxi	1,860	782	137.85%	8,249	4,768	73.01%
Military	417	315	32.38%	2,093	1,903	9.98%
General Aviation						
Itinerant	3,675	2,599	41.40%	16,976	12,388	37.04%
Local	0	126	-100.00%	20	214	-90.65%
Total G.A.	3,675	2,725	34.86%	16,996	12,602	34.87%
Total Operations	15,849	6,817	132.49%	63,323	58,072	9.04%

**Austin-Bergstrom International Airport
Aviation Activity Report
Calendar Year 2021 vs 2020**

By Terminal

	5/2021	5/2020	Percent Change	1/2021 - 5/2021	1/2020 - 5/2020	Percent Change
<u>Barbara Jordan Terminal (BJT)</u>						
Passenger Activity						
Domestic Enplaned Revenue	526,298	56,118	837.84%	1,603,948	1,532,760	4.64%
Domestic Deplaned Revenue	506,500	54,962	821.55%	1,592,688	1,556,269	-44.98%
International Enplaned Revenue	7,197	0	0.00%	16,956	30,817	-51.03%
International Deplaned Revenue	6,854	0	0.00%	16,651	34,001	-51.03%
Domestic Enplaned Non-Revenue	11,115	4,812	130.99%	42,962	49,238	-12.75%
Domestic Deplaned Non-Revenue	10,813	4,397	145.92%	41,804	45,785	-8.69%
International Enplaned Non-Revenue	50	0	0.00%	128	481	-73.39%
International Deplaned Non-Revenue	25	0	0.00%	65	409	-84.11%
Intl Enplaned Pre-Cleared Revenue	0	0	0.00%	0	5,483	-100.00%
Intl Deplaned Pre-Cleared Revenue	0	0	0.00%	0	4,626	-100.00%
Intl Enplaned Pre-Cleared Non-Revenue	0	0	0.00%	0	108	-100.00%
Intl Deplaned Pre-Cleared Non-Revenue	0	0	0.00%	0	100	-100.00%
Barbara Jordan Terminal Passenger Totals	1,068,852	120,289	788.57%	3,315,202	3,260,077	1.69%
<i>BJT Enplaned Passenger Totals</i>	<i>544,660</i>	<i>60,930</i>	<i>793.91%</i>	<i>1,663,994</i>	<i>1,618,887</i>	<i>2.79%</i>
<i>BJT Deplaned Passenger Totals</i>	<i>524,192</i>	<i>59,359</i>	<i>783.09%</i>	<i>1,651,208</i>	<i>1,641,190</i>	<i>0.61%</i>
<i>BJT Domestic Passenger Totals</i>	<i>1,054,726</i>	<i>120,289</i>	<i>776.83%</i>	<i>3,281,402</i>	<i>3,184,052</i>	<i>3.06%</i>
<i>BJT International Passenger Totals</i>	<i>14,126</i>	<i>0</i>	<i>0.00%</i>	<i>33,800</i>	<i>76,025</i>	<i>-55.54%</i>
<u>South Terminal (ST)</u>						
Passenger Activity						
South Terminal Domestic Enplaned Revenue	19,096	5,124	272.68%	63,381	70,484	-10.08%
South Terminal Domestic Deplaned Revenue	18,612	5,321	249.78%	62,764	73,953	-15.13%
South Terminal Domestic Enplaned Non-Revenue	71	50	42.00%	275	356	-22.75%
South Terminal Domestic Deplaned Non-Revenue	79	42	88.10%	299	334	-10.48%
South Terminal Passenger Totals	37,858	10,537	259.29%	126,719	145,127	-12.68%
<i>ST Enplaned Passenger Totals</i>	<i>19,167</i>	<i>5,174</i>	<i>270.45%</i>	<i>63,656</i>	<i>70,840</i>	<i>-10.14%</i>
<i>ST Deplaned Passenger Totals</i>	<i>18,691</i>	<i>5,363</i>	<i>248.52%</i>	<i>63,063</i>	<i>74,287</i>	<i>-15.11%</i>

**Austin-Bergstrom International Airport
Aviation Activity Report
Calendar Year 2021 vs 2020**

	5/2021	5/2020	Percent Change	1/2021 - 5/2021	1/2020 - 5/2020	Percent Change
<u>Total Cargo Activity</u>						
Mail						
Domestic Enplaned Mail	122,221	107,219	13.99%	669,053	874,768	-23.52%
Domestic Deplaned Mail	572,536	216,154	164.87%	2,395,188	2,414,231	-0.79%
International Enplaned Mail	0	0	0.00%	0	0	0.00%
International Deplaned Mail	0	0	0.00%	0	0	0.00%
South Terminal-Domestic Enplaned Mail	0	0	0.00%	0	0	0.00%
South Terminal-Domestic Deplaned Mail	0	0	0.00%	0	0	0.00%
Mail Totals	694,757	323,373	114.85%	3,064,241	3,288,999	-6.83%
Cargo						
Domestic Enplaned Cargo	7,335,956	5,129,157	43.02%	36,970,202	24,469,230	51.09%
Domestic Deplaned Cargo	9,689,110	7,567,363	28.04%	45,460,216	36,196,927	25.59%
International Enplaned Cargo	16,549	65,628	-74.78%	92,111	1,010,929	-90.89%
International Deplaned Cargo	8,181	28,113	-70.90%	201,738	509,587	-60.41%
South Terminal-Domestic Enplaned Cargo	0	0	0.00%	0	0	0.00%
South Terminal-Domestic Deplaned Cargo	0	0	0.00%	0	0	0.00%
Cargo Totals	17,049,796	12,790,261	33.30%	82,724,267	62,186,673	33.03%
Belly Freight						
Domestic Enplaned Belly Freight	330,086	199,147	65.75%	1,016,455	1,328,527	-23.49%
Domestic Deplaned Belly Freight	519,728	275,233	88.83%	1,977,208	2,069,651	-4.47%
International Enplaned Belly Freight	0	0	0.00%	0	1,033,720	-100.00%
International Deplaned Belly Freight	0	0	0.00%	0	2,056,175	-100.00%
South Terminal-Domestic Enplaned Belly Frght	0	0	0.00%	0	0	0.00%
South Terminal-Domestic Deplaned Belly Frght	0	0	0.00%	0	0	0.00%
Belly Freight Totals	849,814	474,380	79.14%	2,993,663	6,488,073	-53.86%
Cargo Totals (Mail, Cargo, Belly Freight)	18,594,367	13,588,014	36.84%	88,782,171	71,963,745	23.37%
<i>Enplaned Cargo Totals</i>	<i>7,804,812</i>	<i>5,501,151</i>	<i>41.88%</i>	<i>38,747,821</i>	<i>28,717,174</i>	<i>34.93%</i>
<i>Deplaned Cargo Totals</i>	<i>10,789,555</i>	<i>8,086,863</i>	<i>33.42%</i>	<i>50,034,350</i>	<i>43,246,571</i>	<i>15.70%</i>
<i>Domestic Cargo Totals</i>	<i>18,569,637</i>	<i>13,494,273</i>	<i>37.61%</i>	<i>88,488,322</i>	<i>67,353,334</i>	<i>31.38%</i>
<i>International Cargo Totals</i>	<i>24,730</i>	<i>93,741</i>	<i>-73.62%</i>	<i>293,849</i>	<i>4,610,411</i>	<i>-93.63%</i>

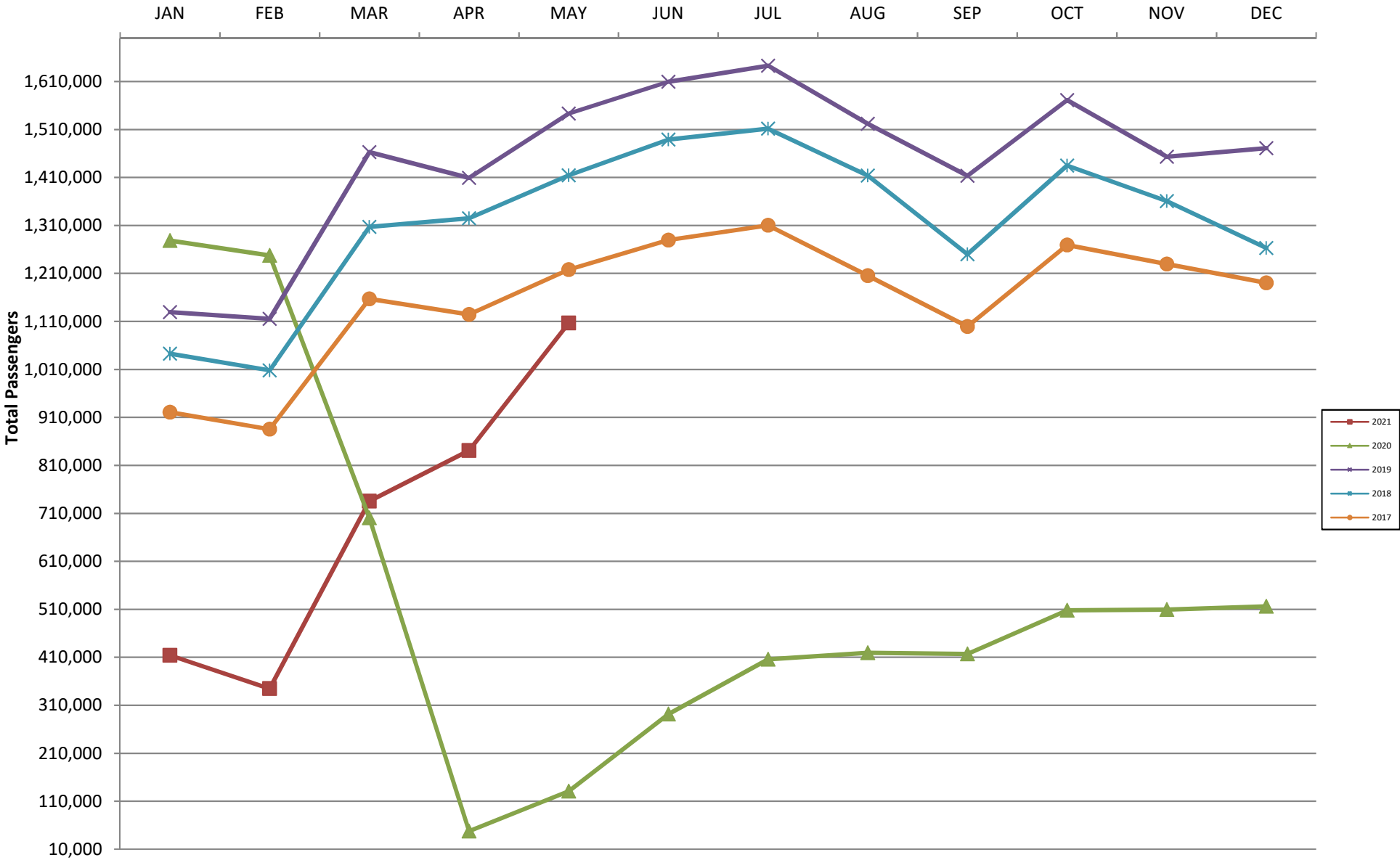
CURRENT CARGO RECORD = 40,215,518

RECORD SET = MARCH 2001

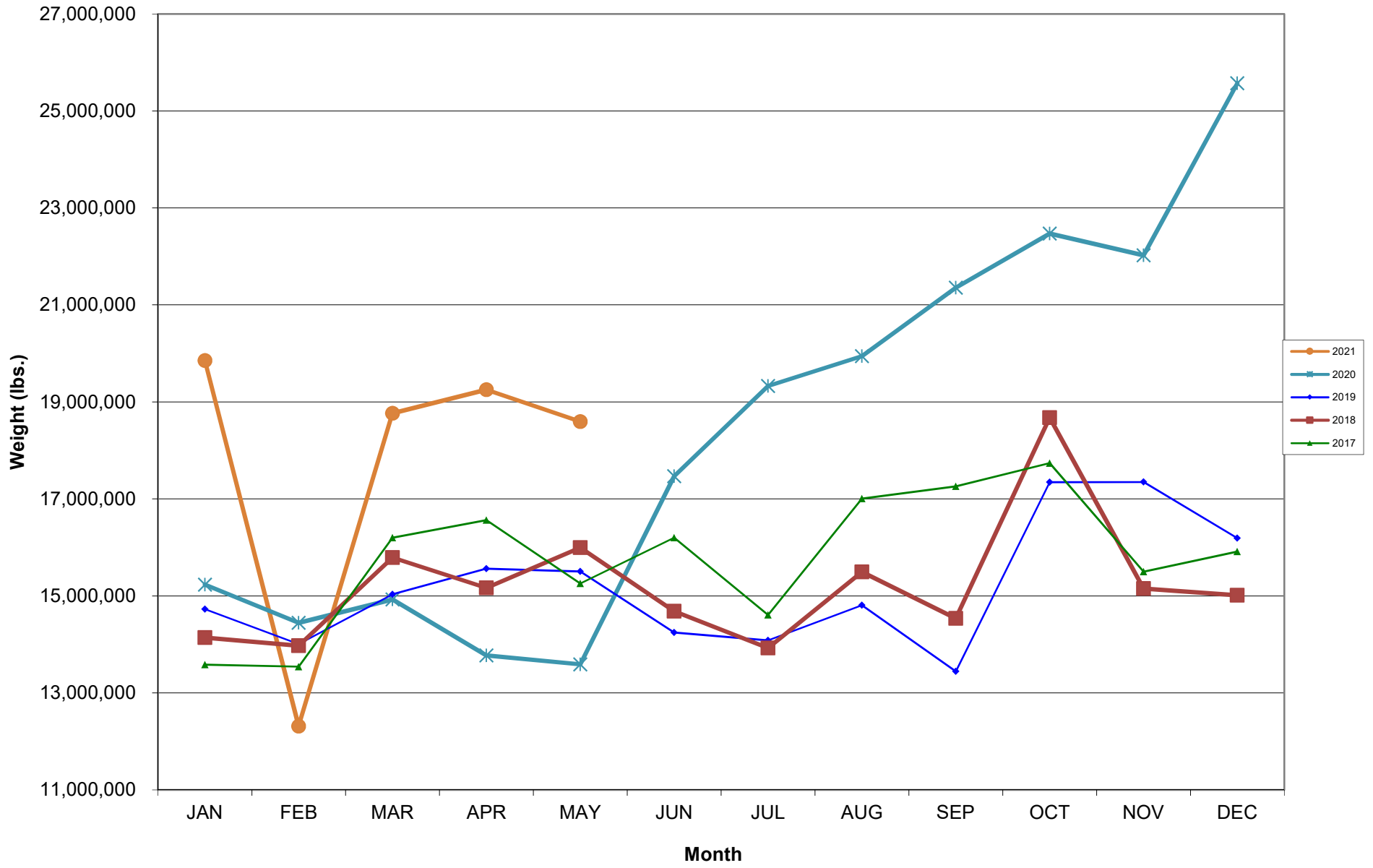
AUS – Airline Codes
May 2021

<u>Code</u>	<u>Carrier</u>
AS	Alaska Airlines, Inc.
G4	Allegiant Air, LLC
AA	American Airlines, Inc.
DL	Delta Air Lines
F9	Frontier Airlines, Inc.
HA	Hawaiian Airlines, Inc.
B6	JetBlue Airways Corp.
WN	Southwest Airlines
NK	Spirit Airlines, Inc.
SY	Sun Country Airlines/MN Airlines LLC
WQ	Swift Air LLC
UA	United Airlines, Inc.

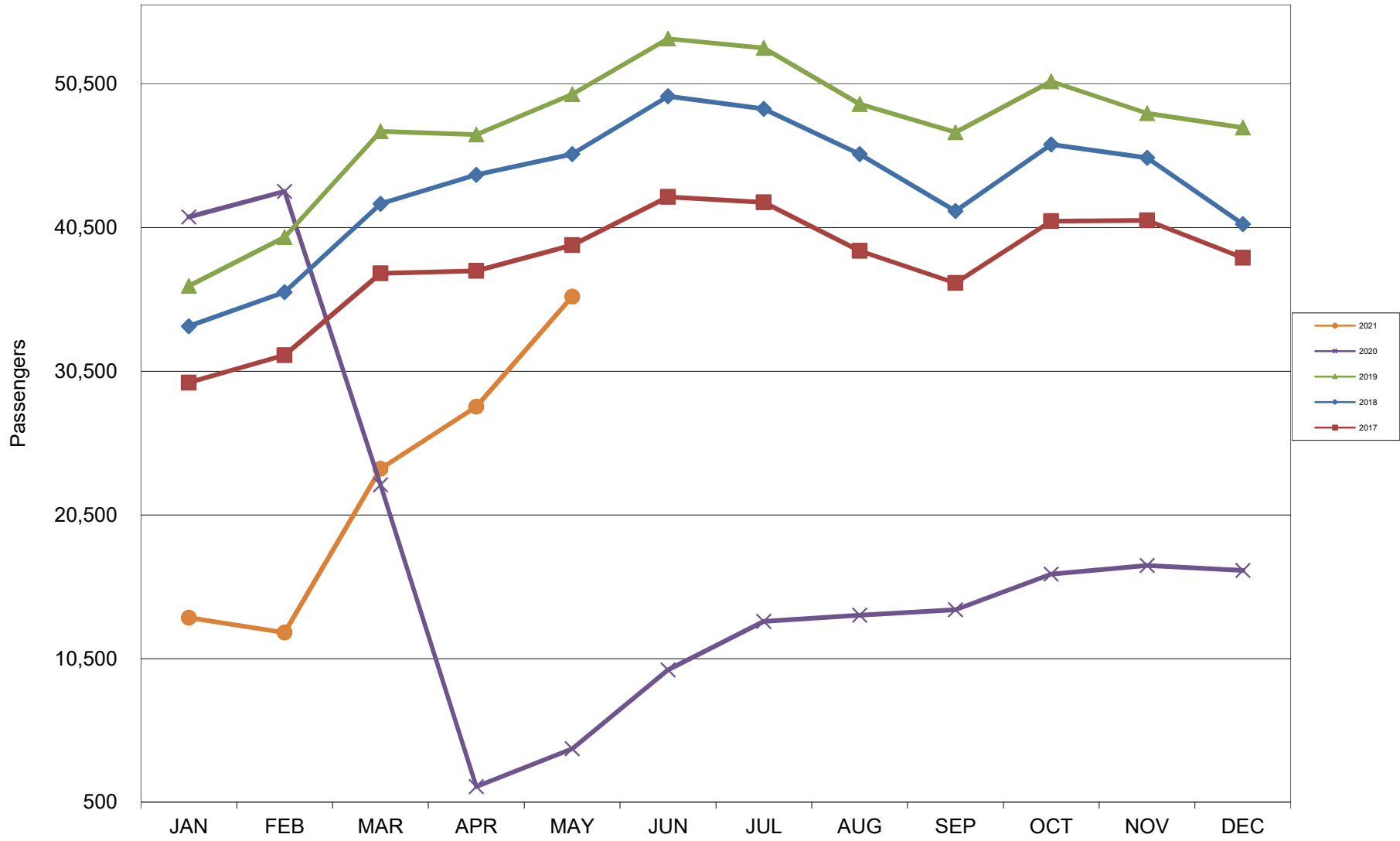
AUSTIN PASSENGER TRAFFIC 5 Year Trend



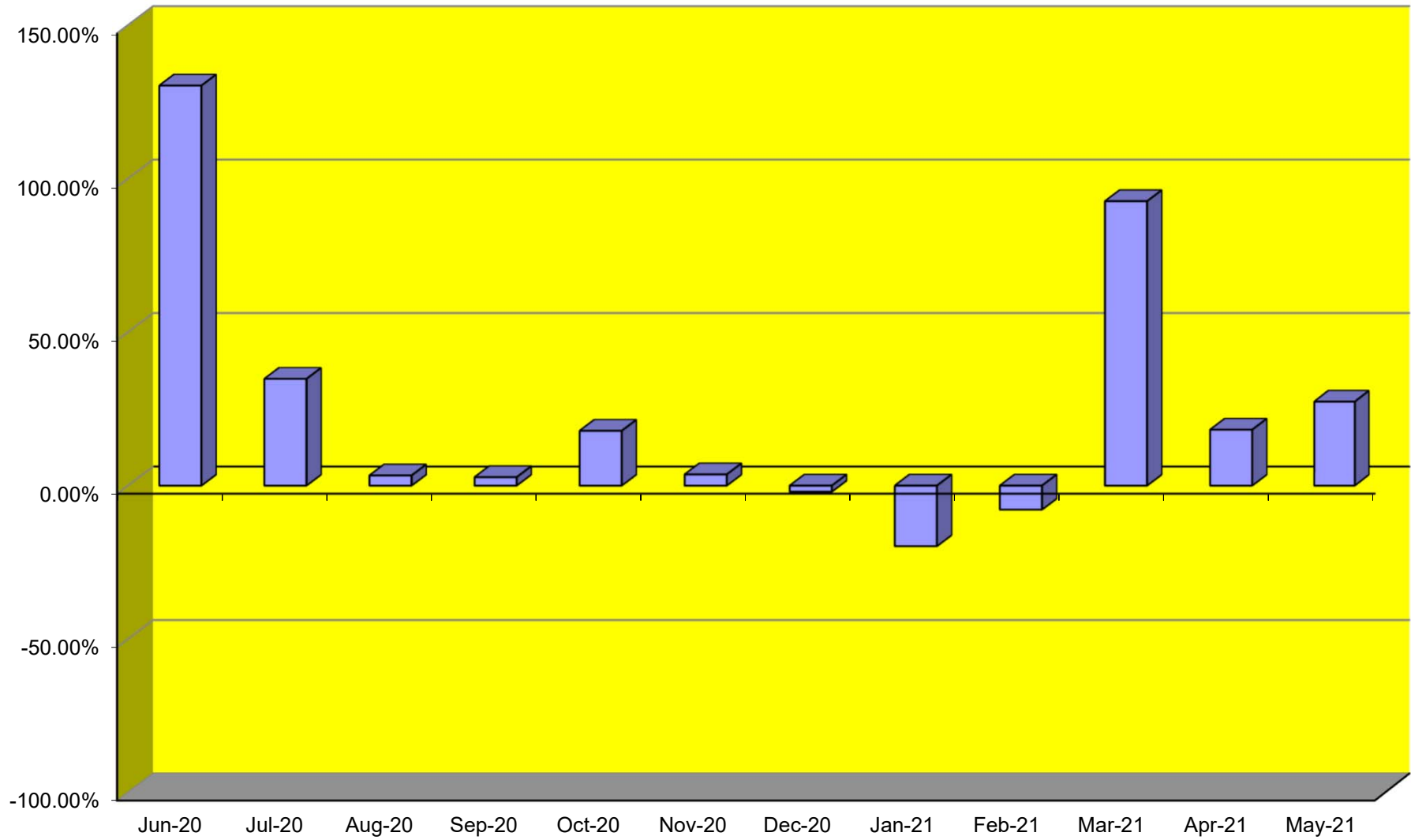
TOTAL CARGO POUNDAGE - AUSTIN, TEXAS



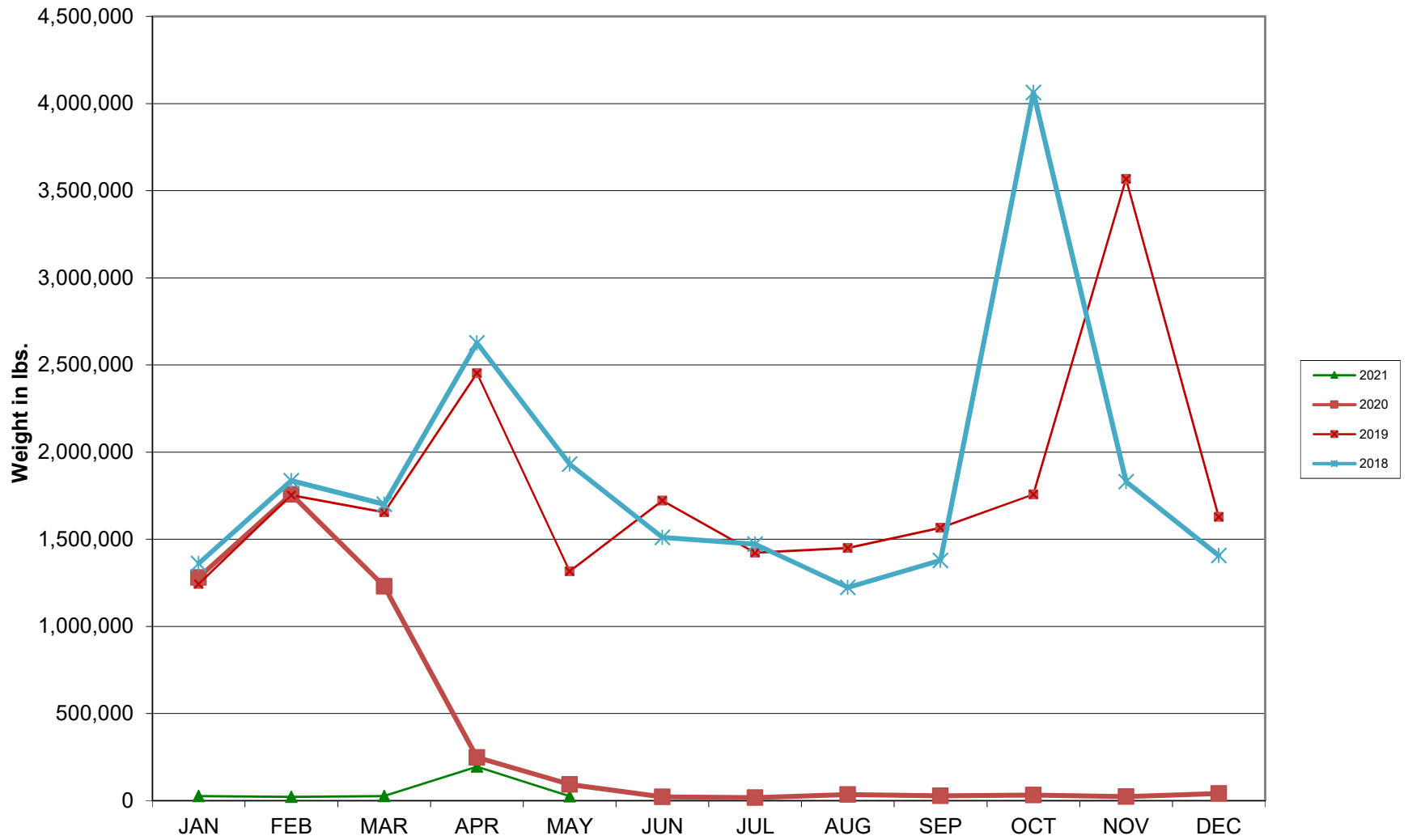
Average Daily Passengers



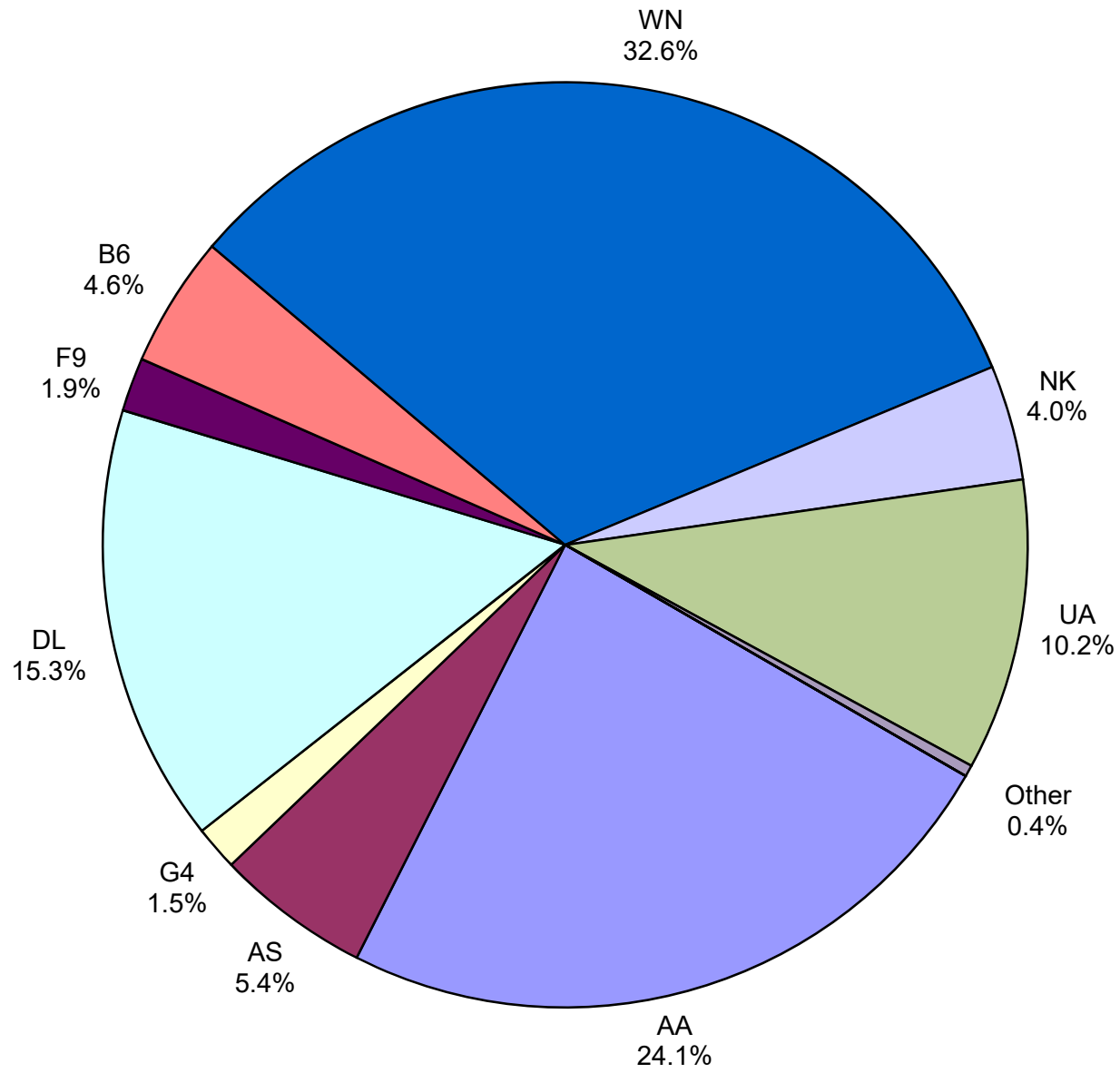
Monthly % Change in Average Daily Passengers



HISTORY OF INTERNATIONAL AIR CARGO



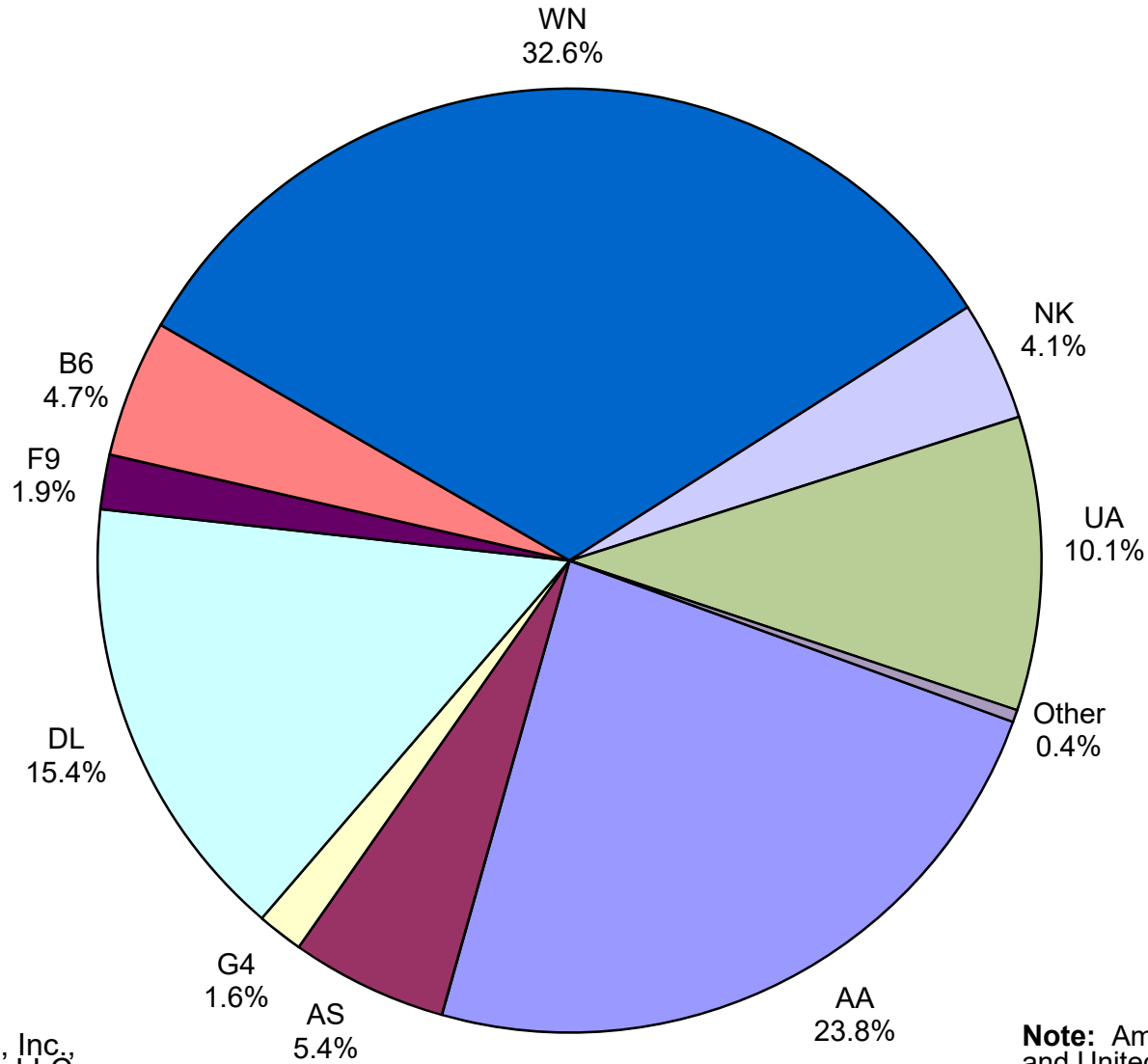
Total Passengers May 2021



Other: Hawaiian Airlines, Inc.,
Sun Country and Swift Air LLC

Note: American, Delta and United Airlines
percentages include Affiliates.

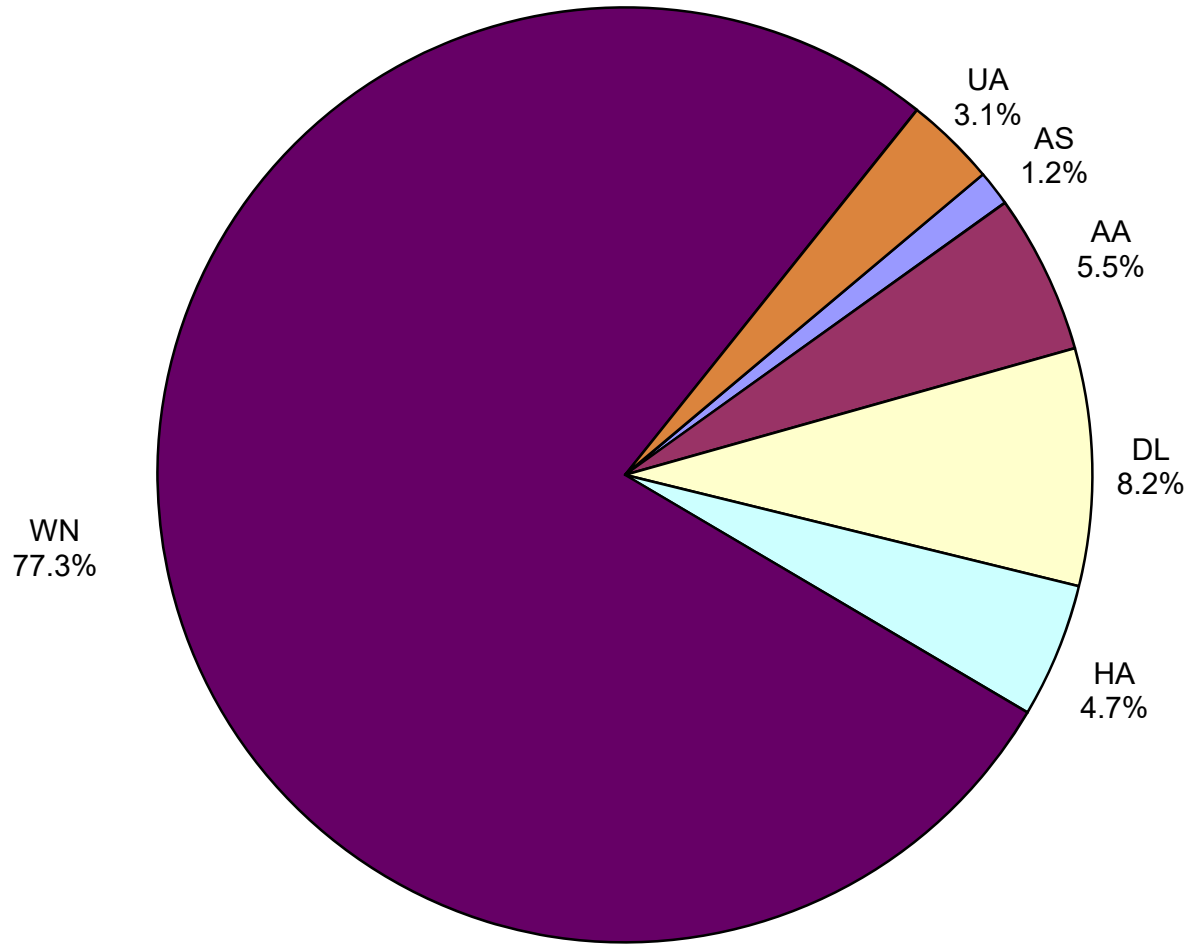
**All Passenger Carriers
Enplaned Revenue Passengers
May 2021**



Other: Hawaiian Airlines, Inc., Sun Country and Swift Air LLC

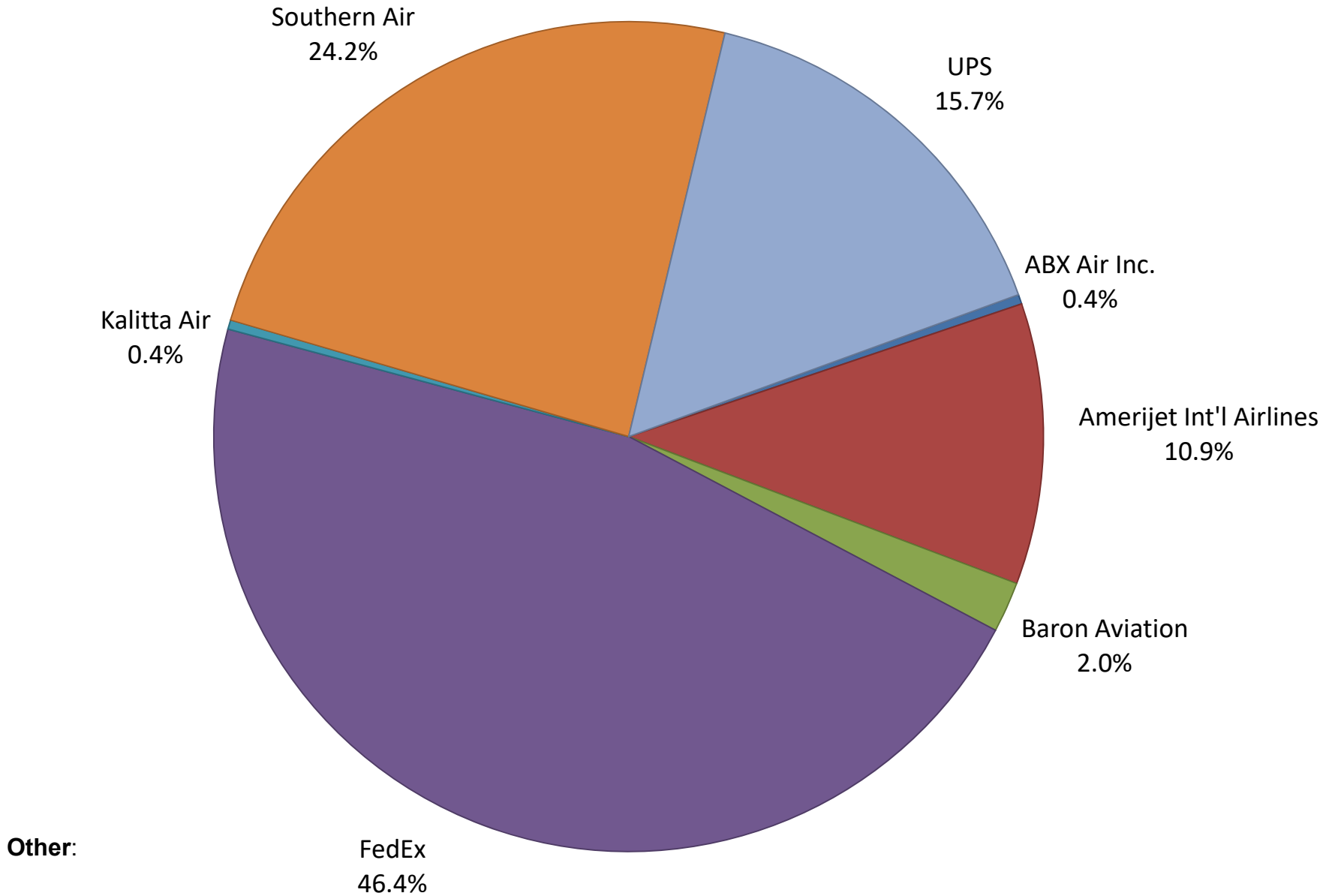
Note: American/US Airways, Delta and United Airlines percentages include Affiliates.

**AUS Belly Freight Market Shares
May 2021**

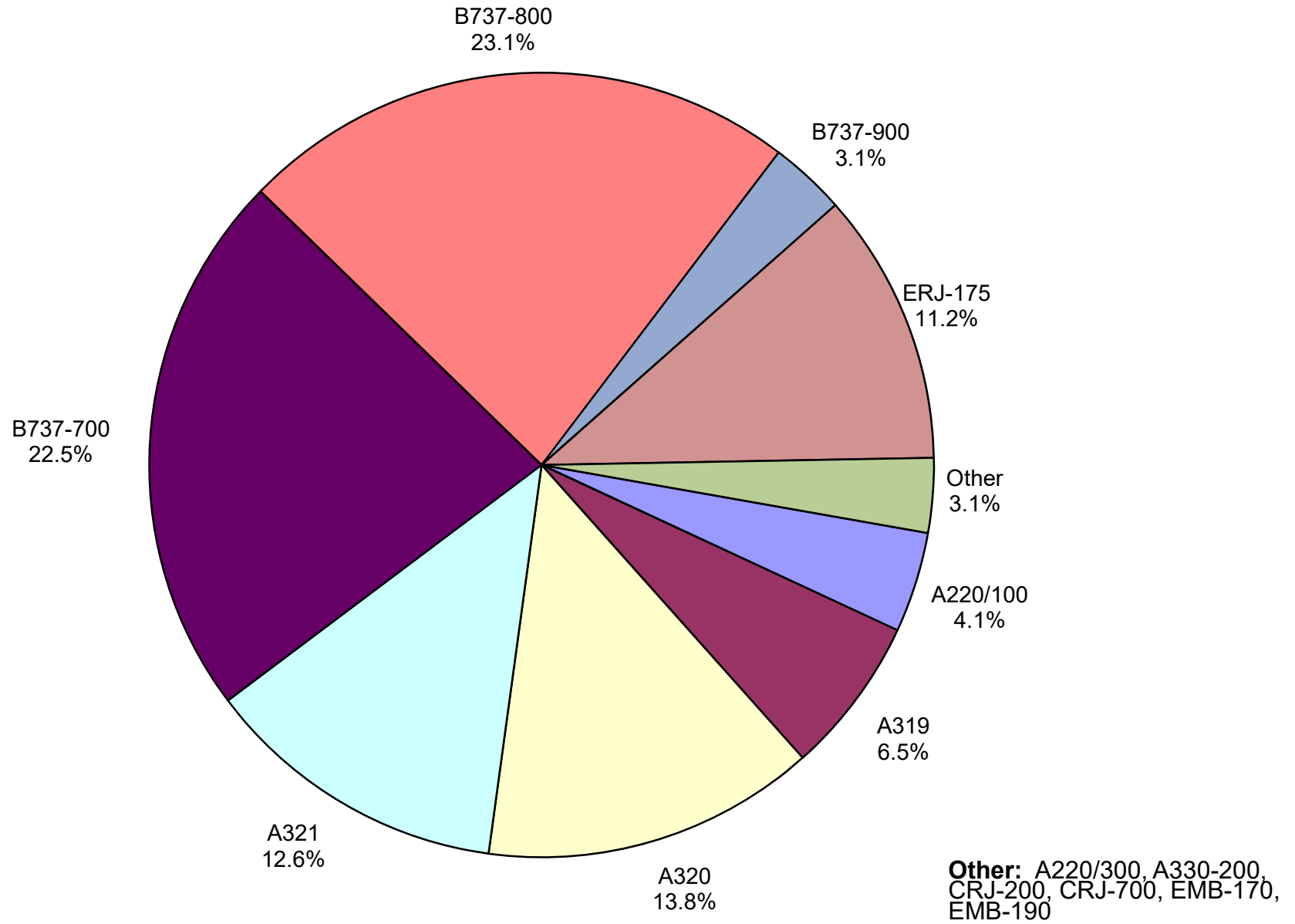


Other =

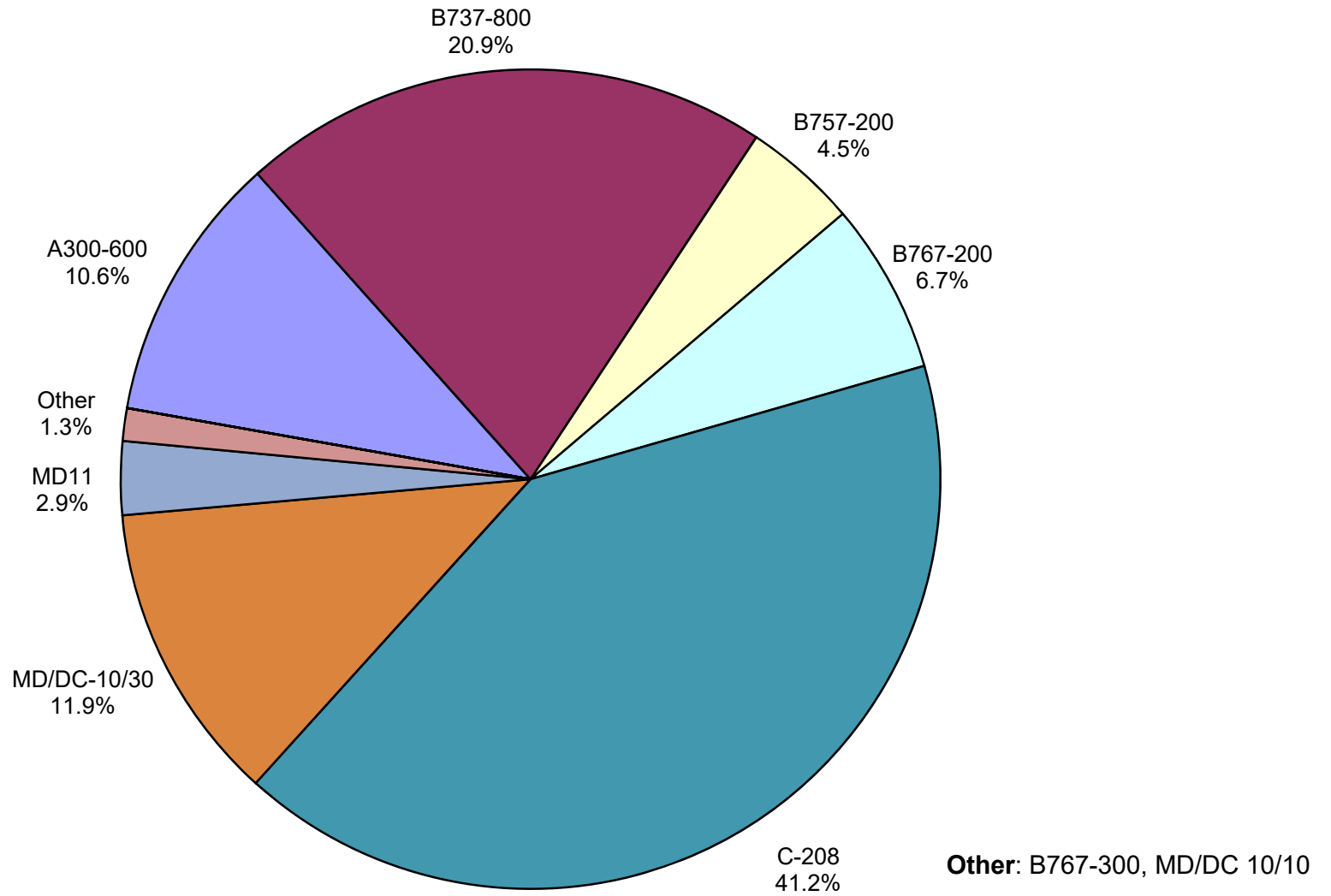
Air Cargo Market Share May 2021



AUS Scheduled Passenger Aircraft Fleet Mix May 2021



**AUS Scheduled Cargo Aircraft Fleet Mix
May 2021**



Austin-Bergstrom International Airport

Pax Detail Report - May, 2021

Company	Period				YTD				2021 Share	2020 Share	Share Diff
	5/2021	5/2020	Difference	Change	YTD 2021	YTD 2020	Difference	Change			
Aeroenlaces Nacionales, SA DE CV	0	0	0	0.0	0	197	-197	-100.0	0.0	0.0	0.0
Aerovias de Mexico S.A. de C.V. Pre Bankruptcy	0	0	0	0.0	0	9,915	-9,915	-100.0	0.0	0.3	-0.3
Air Canada	0	0	0	0.0	0	10,317	-10,317	-100.0	0.0	0.3	-0.3
Alaska Airlines INC	59,730	6,087	53,643	881.3	165,574	124,860	40,714	32.6	4.8	3.7	1.1
Allegiant Air LLC	17,077	5,367	11,710	218.2	47,639	23,842	23,797	99.8	1.4	0.7	0.7
American Airlines INC	266,888	37,577	229,311	610.2	761,551	663,243	98,308	14.8	22.1	19.5	2.6
British Airways PLC	0	0	0	0.0	0	29,217	-29,217	-100.0	0.0	0.9	-0.9
Delta Air Lines	169,470	12,803	156,667	1,223.7	484,631	481,900	2,731	0.6	14.1	14.2	-0.1
Deutsche Lufthansa AG	0	0	0	0.0	0	15,883	-15,883	-100.0	0.0	0.5	-0.5
Frontier Airlines INC	20,781	5,170	15,611	302.0	79,080	121,285	-42,205	-34.8	2.3	3.6	-1.3
Hawaiian Airlines Inc	3,981	0	3,981	0.0	4,853	0	4,853	0.0	0.1	0.0	0.1
JetBlue Airways Corporation	50,725	2,009	48,716	2,424.9	159,962	122,372	37,590	30.7	4.6	3.6	1.0
Miami Air International INC Pre Bankruptcy	0	0	0	0.0	0	121	-121	-100.0	0.0	0.0	0.0
Norwegian Air UK LTD	0	0	0	0.0	0	3,474	-3,474	-100.0	0.0	0.1	-0.1
Southwest Airlines	360,316	49,736	310,580	624.5	1,140,253	1,101,803	38,450	3.5	33.1	32.4	0.7
Spirit Airlines Inc	44,496	1,732	42,764	2,469.1	181,424	209,668	-28,244	-13.5	5.3	6.2	-0.9
Sun Country Airlines/MN Airlines LLC	298	0	298	0.0	829	643	186	28.9	0.0	0.0	0.0
Swift Air LLC	234	0	234	0.0	946	928	18	1.9	0.0	0.0	0.0
United Airlines INC	112,714	10,345	102,369	989.6	415,179	485,536	-70,357	-14.5	12.1	14.3	-2.2
Report Totals	1,106,710	130,826	975,884	745.9%	3,441,921	3,405,204	36,717	1.1%	99.9%	100.3%	

Statistics Included in Report

Domestic Passengers: Enplaned Revenue, Deplaned Revenue, Enplaned Non-Revenue, Deplaned Non-Revenue

International Passengers: Enplaned Revenue, Deplaned Revenue, Enplaned Non-Revenue, Deplaned Non-Revenue

International Pre-Cleared Passengers: Enplaned Revenue, Deplaned Revenue, Enplaned Non-Revenue, Deplaned Non-Revenue

South Terminal Domestic Passengers: Enplaned Revenue, Deplaned Revenue, Enplaned Non-Revenue, Deplaned Non-Revenue

Austin-Bergstrom International Airport

Summary Landings Report

Landing Type: Total

Month	2021		2020		2019		% Change 2021- 2020		% Change 2020- 2019	
	Count	Weight	Count	Weight	Count	Weight	Count	Weight	Count	Weight
January	2,839	399,216,719	5,762	812,175,948	5,348	733,746,679	-50.73%	-50.85%	7.74%	10.69%
February	2,194	303,710,832	5,382	764,833,023	5,040	692,708,930	-59.23%	-60.29%	6.79%	10.41%
March	4,076	547,982,160	5,278	742,099,772	5,964	825,483,911	-22.77%	-26.16%	-11.50%	-10.10%
April	4,345	589,843,731	1,884	264,508,162	5,899	815,621,798	130.63%	123.00%	-68.06%	-67.57%
May	5,035	685,565,245	1,608	223,266,578	6,294	881,747,150	213.12%	207.06%	-74.45%	-74.68%
June	0	0	2,119	293,669,395	6,322	890,410,020	-100.00%	-100.00%	-66.48%	-67.02%
July	0	0	3,401	458,639,882	6,551	915,103,306	-100.00%	-100.00%	-48.08%	-49.88%
August	0	0	3,390	473,872,571	6,447	906,499,773	-100.00%	-100.00%	-47.42%	-47.73%
September	0	0	2,791	378,925,681	6,020	848,899,951	-100.00%	-100.00%	-53.64%	-55.36%
October	0	0	2,972	409,225,230	6,459	916,700,076	-100.00%	-100.00%	-53.99%	-55.36%
November	0	0	3,157	438,563,290	5,924	836,527,780	-100.00%	-100.00%	-46.71%	-47.57%
December	0	0	3,126	431,926,302	6,078	848,973,148	-100.00%	-100.00%	-48.57%	-49.12%
Totals For Selected Period	18,489	2,526,318,687	19,914	2,806,883,483	28,545	3,949,308,468	-7.16%	-10.00%	-30.24%	-28.93%
Yearly Totals	18,489	2,526,318,687	40,870	5,691,705,834	72,346	10,112,422,522	-54.76%	-55.61%	-43.51%	-43.72%