

**Austin-Bergstrom International Airport
Aviation Activity Report
Calendar Year 2021 vs 2020**

Combined Terminals

	6/2021	6/2020	Percent Change	1/2021 - 6/2021	1/2020 - 6/2020	Percent Change
ABIA						
Total Passenger Activity						
Domestic Enplaned Revenue	651,016	130,614	398.43%	2,254,964	1,663,374	35.57%
Domestic Deplaned Revenue	622,553	122,614	407.73%	2,215,241	1,678,883	31.95%
International Enplaned Revenue	11,208	0	0.00%	28,164	30,817	-8.61%
International Deplaned Revenue	10,760	0	0.00%	27,411	34,001	-19.38%
Domestic Enplaned Non-Revenue	13,516	5,409	149.88%	56,478	54,647	3.35%
Domestic Deplaned Non-Revenue	12,579	5,221	140.93%	54,383	51,006	6.62%
International Enplaned Non-Revenue	35	0	0.00%	163	481	-66.11%
International Deplaned Non-Revenue	20	0	0.00%	85	409	-79.22%
Intl Enplaned Pre-Cleared Revenue	0	0	0.00%	0	5,483	-100.00%
Intl Deplaned Pre-Cleared Revenue	0	0	0.00%	0	4,626	-100.00%
Intl Enplaned Pre-Cleared Non-Revenue	0	0	0.00%	0	108	-100.00%
Intl Deplaned Pre-Cleared Non-Revenue	0	0	0.00%	0	100	-100.00%
South Terminal Domestic Enplaned Revenue	25,165	14,079	78.74%	88,546	84,563	4.71%
South Terminal Domestic Deplaned Revenue	23,608	13,448	75.55%	86,372	87,401	-1.18%
South Terminal Domestic Enplaned Non-Revenue	107	93	15.05%	382	449	-14.92%
South Terminal Domestic Deplaned Non-Revenue	99	100	-1.00%	398	434	-8.29%
ABIA Passenger Totals	1,370,666	291,578	370.09%	4,812,587	3,696,782	30.18%
<i>ABIA Enplaned Passenger Totals</i>	<i>701,047</i>	<i>150,195</i>	<i>366.76%</i>	<i>2,428,697</i>	<i>1,839,922</i>	<i>32.00%</i>
<i>ABIA Deplaned Passenger Totals</i>	<i>669,619</i>	<i>141,383</i>	<i>373.62%</i>	<i>2,383,890</i>	<i>1,856,860</i>	<i>28.38%</i>
<i>ABIA Domestic Passenger Totals</i>	<i>1,348,643</i>	<i>291,578</i>	<i>362.53%</i>	<i>4,756,764</i>	<i>3,620,757</i>	<i>31.37%</i>
<i>ABIA International Passenger Totals</i>	<i>22,023</i>	<i>0</i>	<i>0.00%</i>	<i>55,823</i>	<i>76,025</i>	<i>-26.57%</i>

CURRENT PASSENGER RECORD = 1,643,016 RECORD SET = JULY 2019

Total Aircraft Operations						
Air Carrier	11,501	4,044	184.40%	47,486	42,843	10.84%
Commuter & Air Taxi	1,768	1,106	59.86%	10,017	5,874	70.53%
Military	583	373	56.30%	2,676	2,276	17.57%
General Aviation						
Itinerant	3,802	2,988	27.24%	20,778	15,376	35.13%
Local	6	54	-88.89%	26	268	-90.30%
Total G.A.	3,808	3,042	25.18%	20,804	15,644	32.98%
Total Operations	17,660	8,565	106.19%	80,983	66,637	21.53%

**Austin-Bergstrom International Airport
Aviation Activity Report
Calendar Year 2021 vs 2020**

By Terminal

	6/2021	6/2020	Percent Change	1/2021 - 6/2021	1/2020 - 6/2020	Percent Change
<u>Barbara Jordan Terminal (BJT)</u>						
Passenger Activity						
Domestic Enplaned Revenue	651,016	130,614	398.43%	2,254,964	1,663,374	35.57%
Domestic Deplaned Revenue	622,553	122,614	407.73%	2,215,241	1,678,883	-8.61%
International Enplaned Revenue	11,208	0	0.00%	28,164	30,817	-19.38%
International Deplaned Revenue	10,760	0	0.00%	27,411	34,001	-19.38%
Domestic Enplaned Non-Revenue	13,516	5,409	149.88%	56,478	54,647	3.35%
Domestic Deplaned Non-Revenue	12,579	5,221	140.93%	54,383	51,006	6.62%
International Enplaned Non-Revenue	35	0	0.00%	163	481	-66.11%
International Deplaned Non-Revenue	20	0	0.00%	85	409	-79.22%
Intl Enplaned Pre-Cleared Revenue	0	0	0.00%	0	5,483	-100.00%
Intl Deplaned Pre-Cleared Revenue	0	0	0.00%	0	4,626	-100.00%
Intl Enplaned Pre-Cleared Non-Revenue	0	0	0.00%	0	108	-100.00%
Intl Deplaned Pre-Cleared Non-Revenue	0	0	0.00%	0	100	-100.00%
Barbara Jordan Terminal Passenger Totals	1,321,687	263,858	400.91%	4,636,889	3,523,935	31.58%
<i>BJT Enplaned Passenger Totals</i>	<i>675,775</i>	<i>136,023</i>	<i>396.81%</i>	<i>2,339,769</i>	<i>1,754,910</i>	<i>33.33%</i>
<i>BJT Deplaned Passenger Totals</i>	<i>645,912</i>	<i>127,835</i>	<i>405.27%</i>	<i>2,297,120</i>	<i>1,769,025</i>	<i>29.85%</i>
<i>BJT Domestic Passenger Totals</i>	<i>1,299,664</i>	<i>263,858</i>	<i>392.56%</i>	<i>4,581,066</i>	<i>3,447,910</i>	<i>32.87%</i>
<i>BJT International Passenger Totals</i>	<i>22,023</i>	<i>0</i>	<i>0.00%</i>	<i>55,823</i>	<i>76,025</i>	<i>-26.57%</i>
<u>South Terminal (ST)</u>						
Passenger Activity						
South Terminal Domestic Enplaned Revenue	25,165	14,079	78.74%	88,546	84,563	4.71%
South Terminal Domestic Deplaned Revenue	23,608	13,448	75.55%	86,372	87,401	-1.18%
South Terminal Domestic Enplaned Non-Revenue	107	93	15.05%	382	449	-14.92%
South Terminal Domestic Deplaned Non-Revenue	99	100	-1.00%	398	434	-8.29%
South Terminal Passenger Totals	48,979	27,720	76.69%	175,698	172,847	1.65%
<i>ST Enplaned Passenger Totals</i>	<i>25,272</i>	<i>14,172</i>	<i>78.32%</i>	<i>88,928</i>	<i>85,012</i>	<i>4.61%</i>
<i>ST Deplaned Passenger Totals</i>	<i>23,707</i>	<i>13,548</i>	<i>74.99%</i>	<i>86,770</i>	<i>87,835</i>	<i>-1.21%</i>

**Austin-Bergstrom International Airport
Aviation Activity Report
Calendar Year 2021 vs 2020**

	6/2021	6/2020	Percent Change	1/2021 - 6/2021	1/2020 - 6/2020	Percent Change
<u>Total Cargo Activity</u>						
Mail						
Domestic Enplaned Mail	122,702	148,965	-17.63%	791,755	1,023,733	-22.66%
Domestic Deplaned Mail	567,457	210,114	170.07%	2,962,645	2,624,345	12.89%
International Enplaned Mail	0	0	0.00%	0	0	0.00%
International Deplaned Mail	0	0	0.00%	0	0	0.00%
South Terminal-Domestic Enplaned Mail	0	0	0.00%	0	0	0.00%
South Terminal-Domestic Deplaned Mail	0	0	0.00%	0	0	0.00%
Mail Totals	690,159	359,079	92.20%	3,754,400	3,648,078	2.91%
Cargo						
Domestic Enplaned Cargo	6,673,470	6,484,471	2.91%	43,643,672	30,953,701	41.00%
Domestic Deplaned Cargo	8,464,277	10,316,918	-17.96%	53,924,493	46,513,845	15.93%
International Enplaned Cargo	17,254	12,401	39.13%	109,365	1,023,330	-89.31%
International Deplaned Cargo	17,172	9,164	87.39%	218,910	518,751	-57.80%
South Terminal-Domestic Enplaned Cargo	0	0	0.00%	0	0	0.00%
South Terminal-Domestic Deplaned Cargo	0	0	0.00%	0	0	0.00%
Cargo Totals	15,172,173	16,822,954	-9.81%	97,896,440	79,009,627	23.90%
Belly Freight						
Domestic Enplaned Belly Freight	418,800	117,047	257.80%	1,435,255	1,445,574	-0.71%
Domestic Deplaned Belly Freight	689,941	168,668	309.05%	2,667,149	2,238,319	19.16%
International Enplaned Belly Freight	0	0	0.00%	0	1,033,720	-100.00%
International Deplaned Belly Freight	0	0	0.00%	0	2,056,175	-100.00%
South Terminal-Domestic Enplaned Belly Frght	0	0	0.00%	0	0	0.00%
South Terminal-Domestic Deplaned Belly Frght	0	0	0.00%	0	0	0.00%
Belly Freight Totals	1,108,741	285,715	288.06%	4,102,404	6,773,788	-39.44%
Cargo Totals (Mail, Cargo, Belly Freight)	16,971,073	17,467,748	-2.84%	105,753,244	89,431,493	18.25%
<i>Enplaned Cargo Totals</i>	7,232,226	6,762,884	6.94%	45,980,047	35,480,058	29.59%
<i>Deplaned Cargo Totals</i>	9,738,847	10,704,864	-9.02%	59,773,197	53,951,435	10.79%
<i>Domestic Cargo Totals</i>	16,936,647	17,446,183	-2.92%	105,424,969	84,799,517	24.32%
<i>International Cargo Totals</i>	34,426	21,565	59.64%	328,275	4,631,976	-92.91%

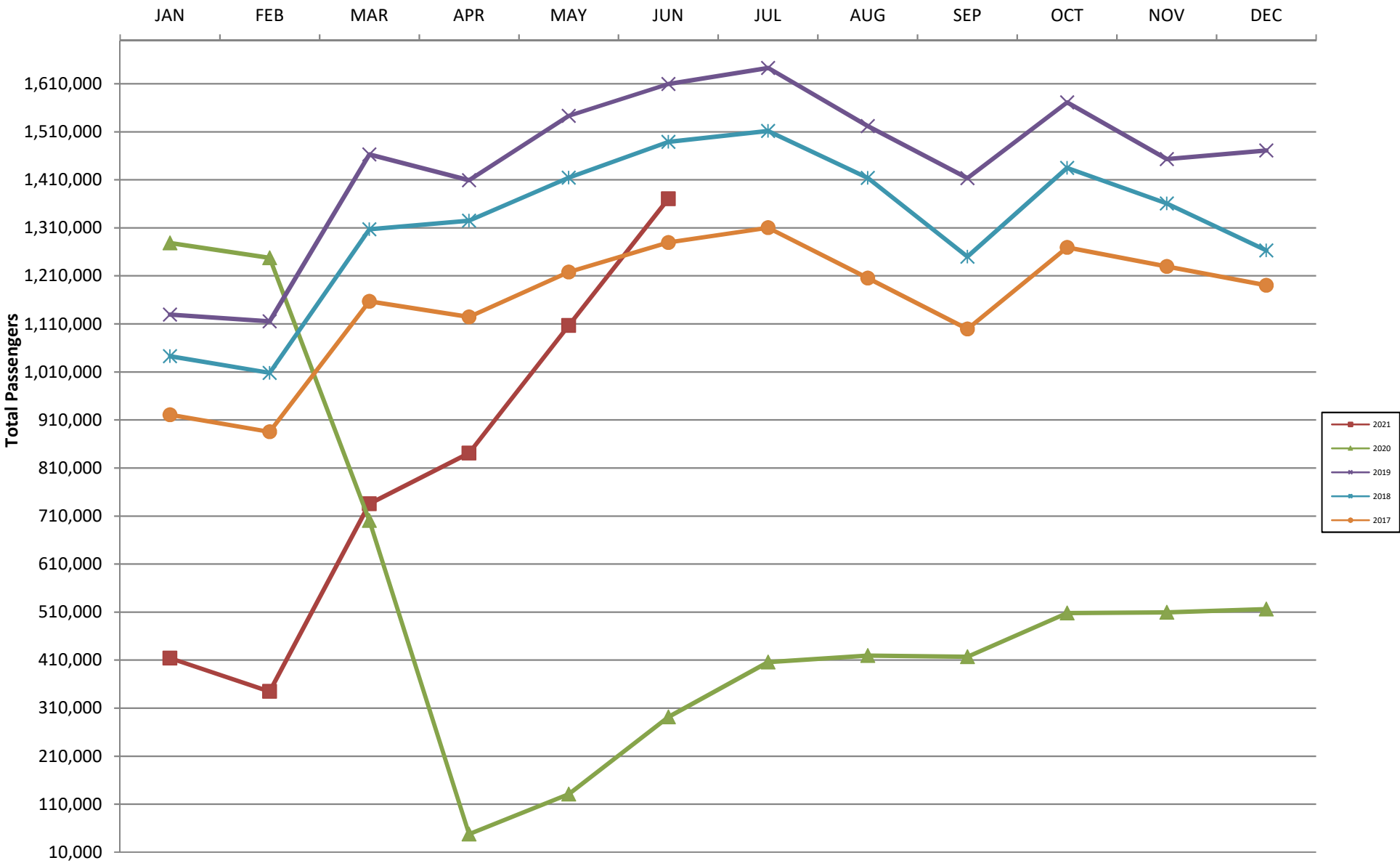
CURRENT CARGO RECORD = 40,215,518

RECORD SET = MARCH 2001

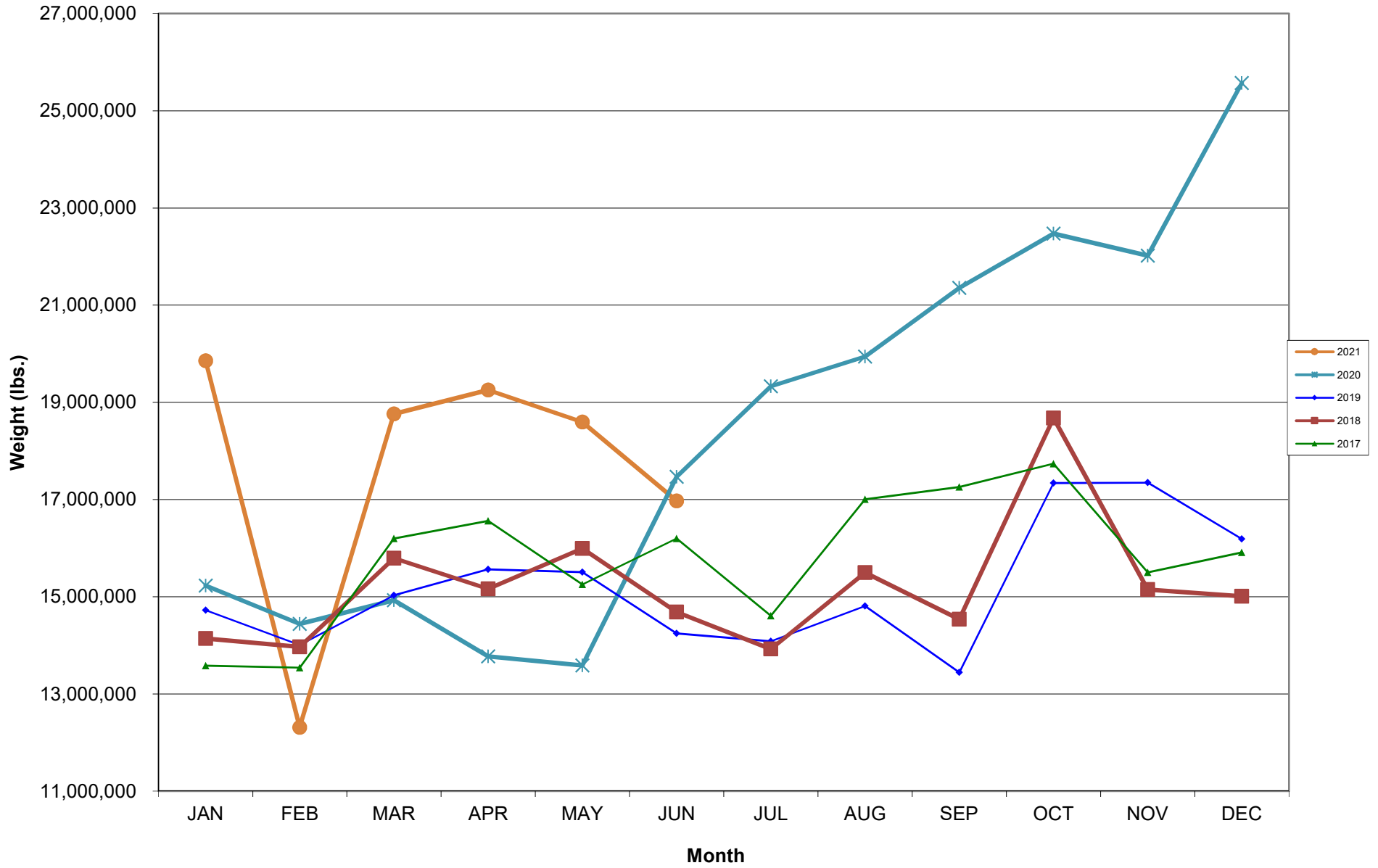
AUS – Airline Codes
June 2021

<u>Code</u>	<u>Carrier</u>
AS	Alaska Airlines, Inc.
G4	Allegiant Air, LLC
AA	American Airlines, Inc.
DL	Delta Air Lines
F9	Frontier Airlines, Inc.
HA	Hawaiian Airlines, Inc.
B6	JetBlue Airways Corp.
WN	Southwest Airlines
NK	Spirit Airlines, Inc.
SY	Sun Country Airlines/MN Airlines LLC
WQ	Swift Air LLC
UA	United Airlines, Inc.

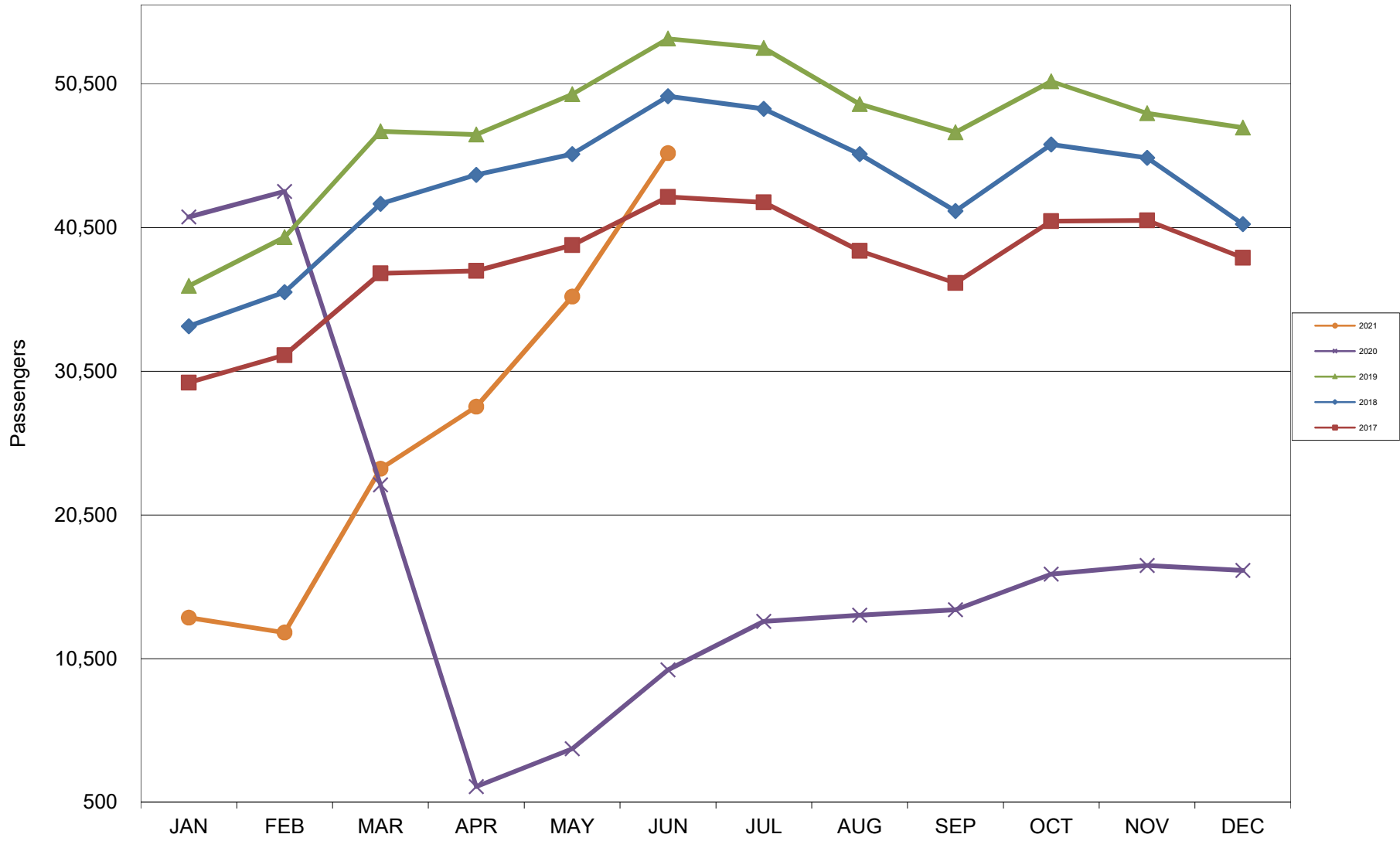
AUSTIN PASSENGER TRAFFIC 5 Year Trend



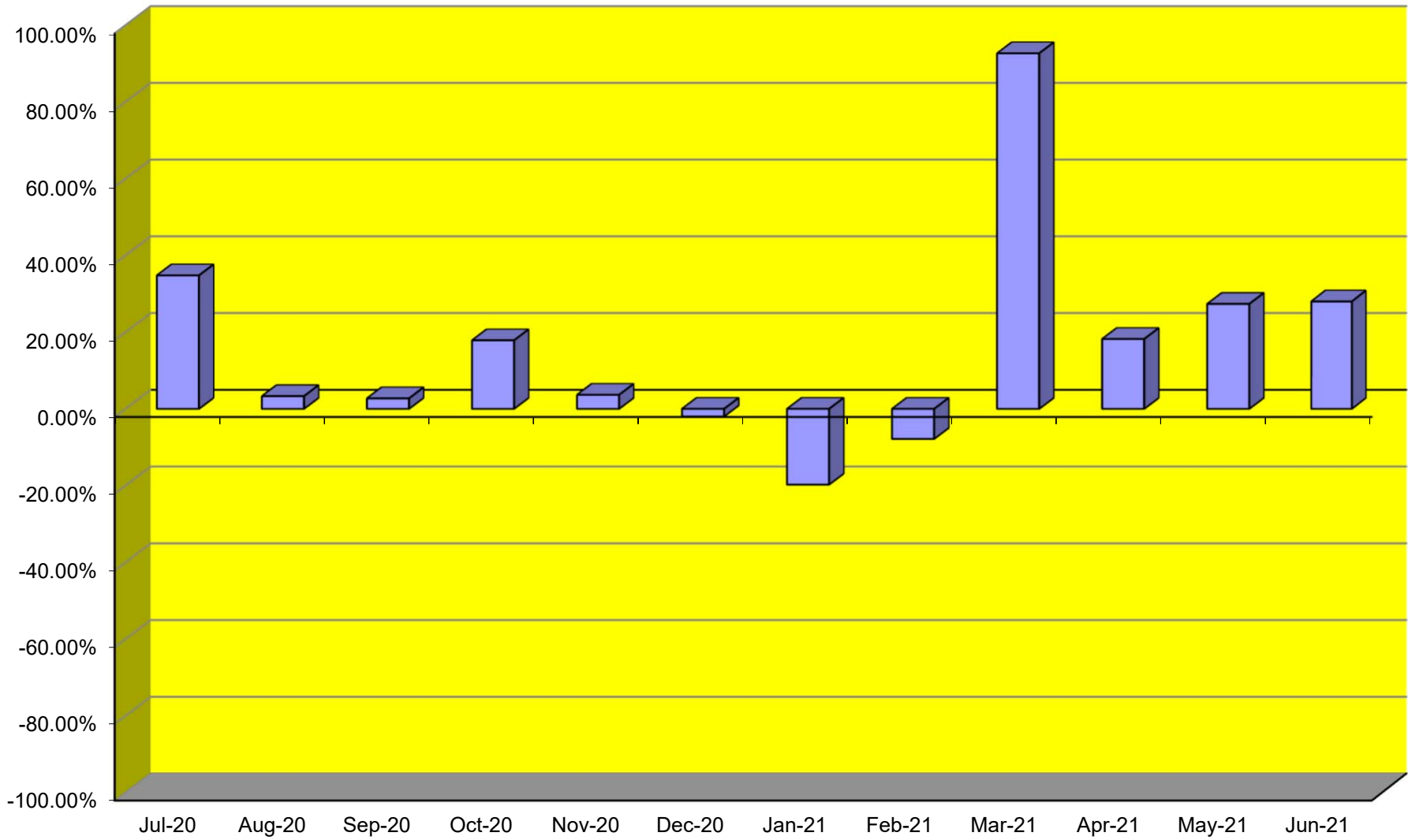
TOTAL CARGO POUNDAGE - AUSTIN, TEXAS



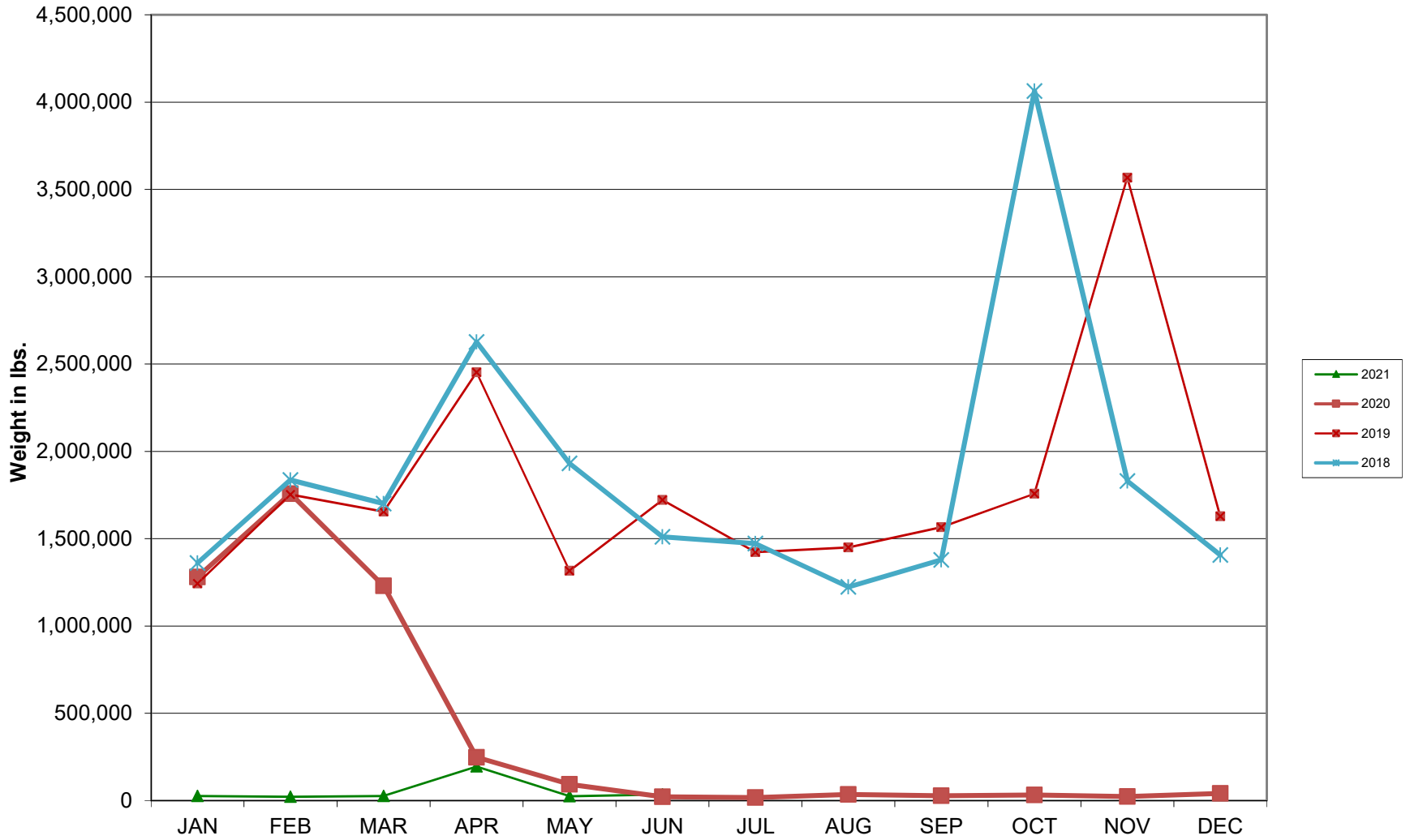
Average Daily Passengers



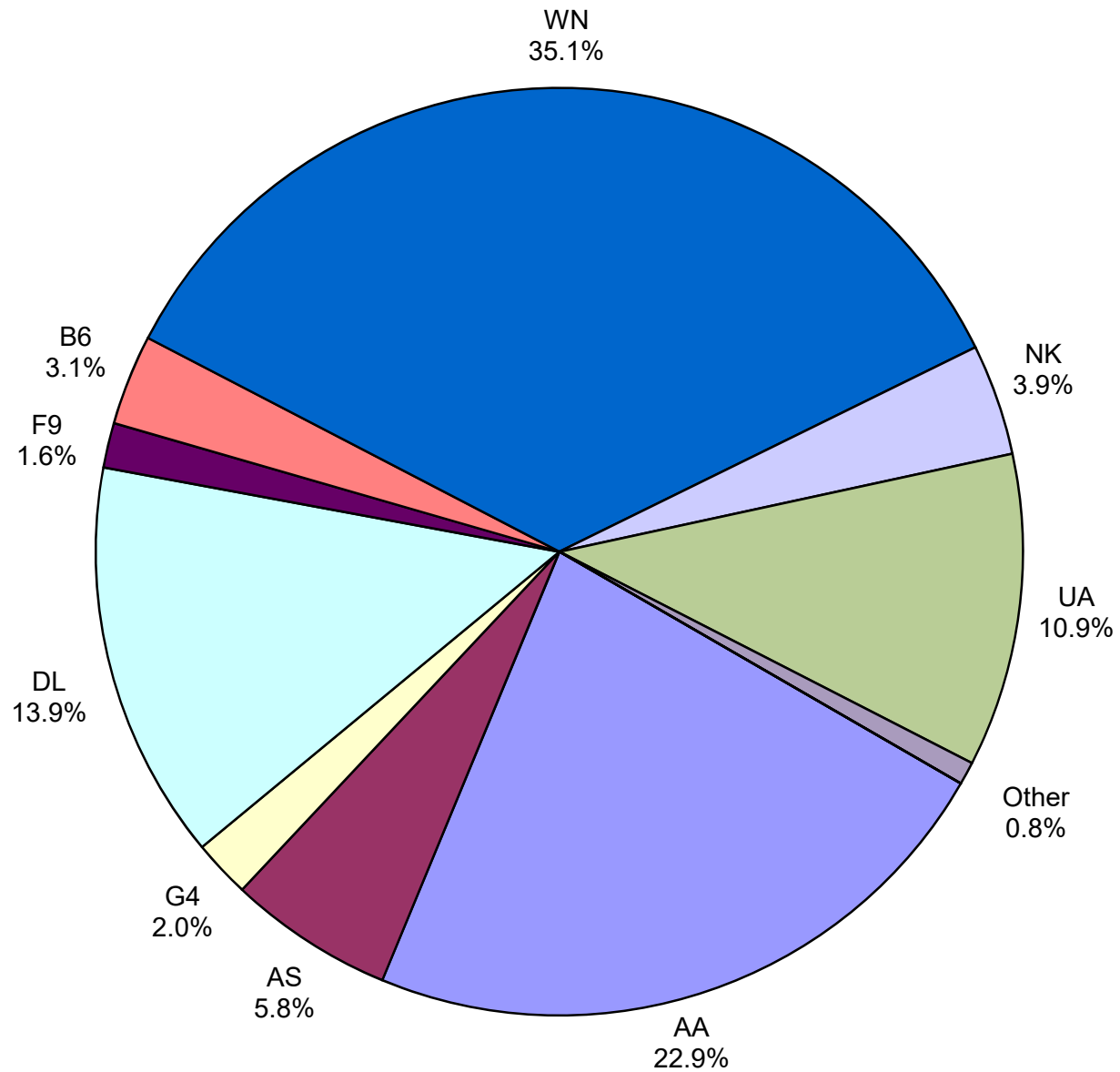
Monthly % Change in Average Daily Passengers



HISTORY OF INTERNATIONAL AIR CARGO



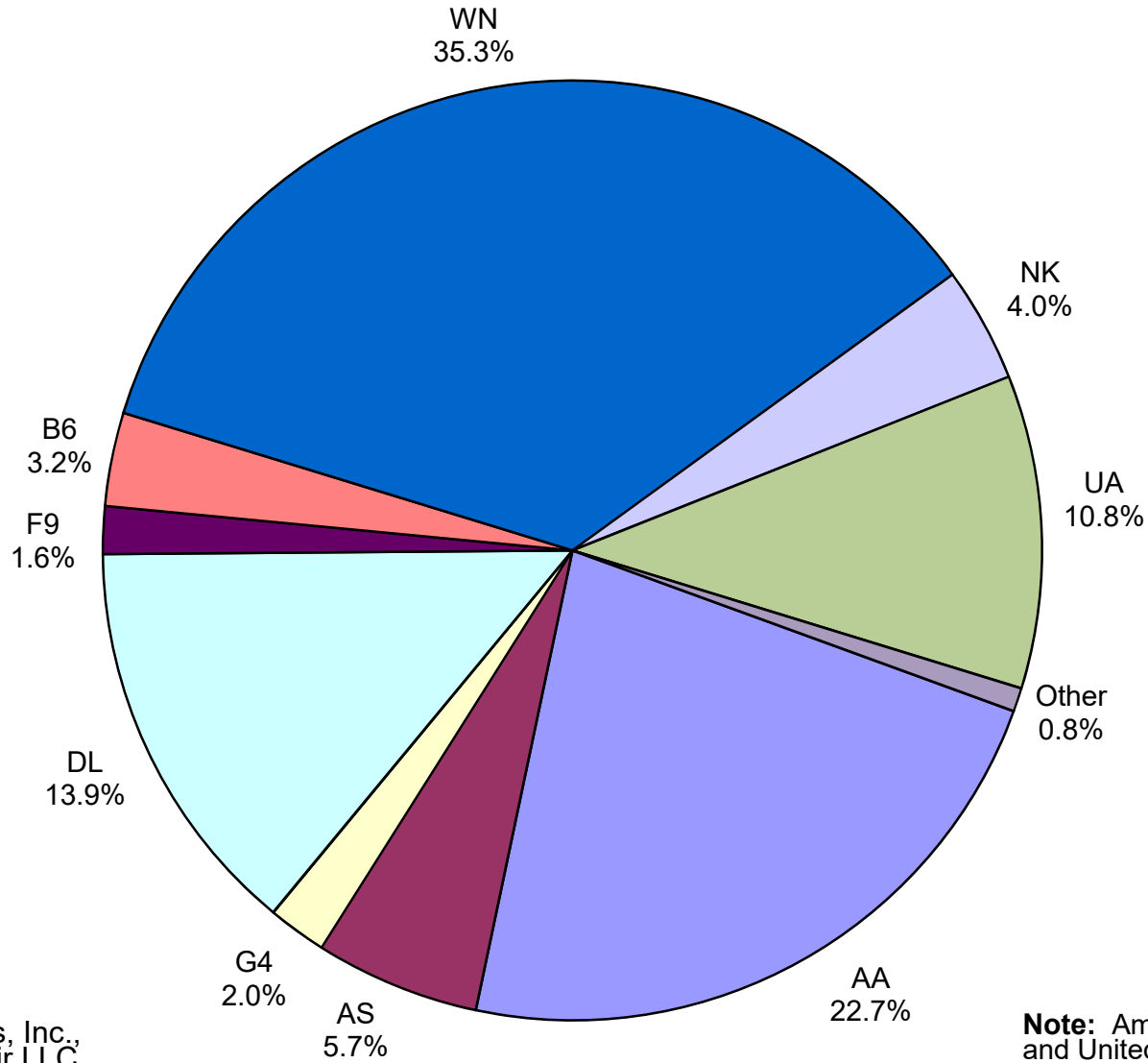
Total Passengers June 2021



Other: Hawaiian Airlines, Inc.,
Sun Country and Swift Air LLC

Note: American, Delta and United Airlines
percentages include Affiliates.

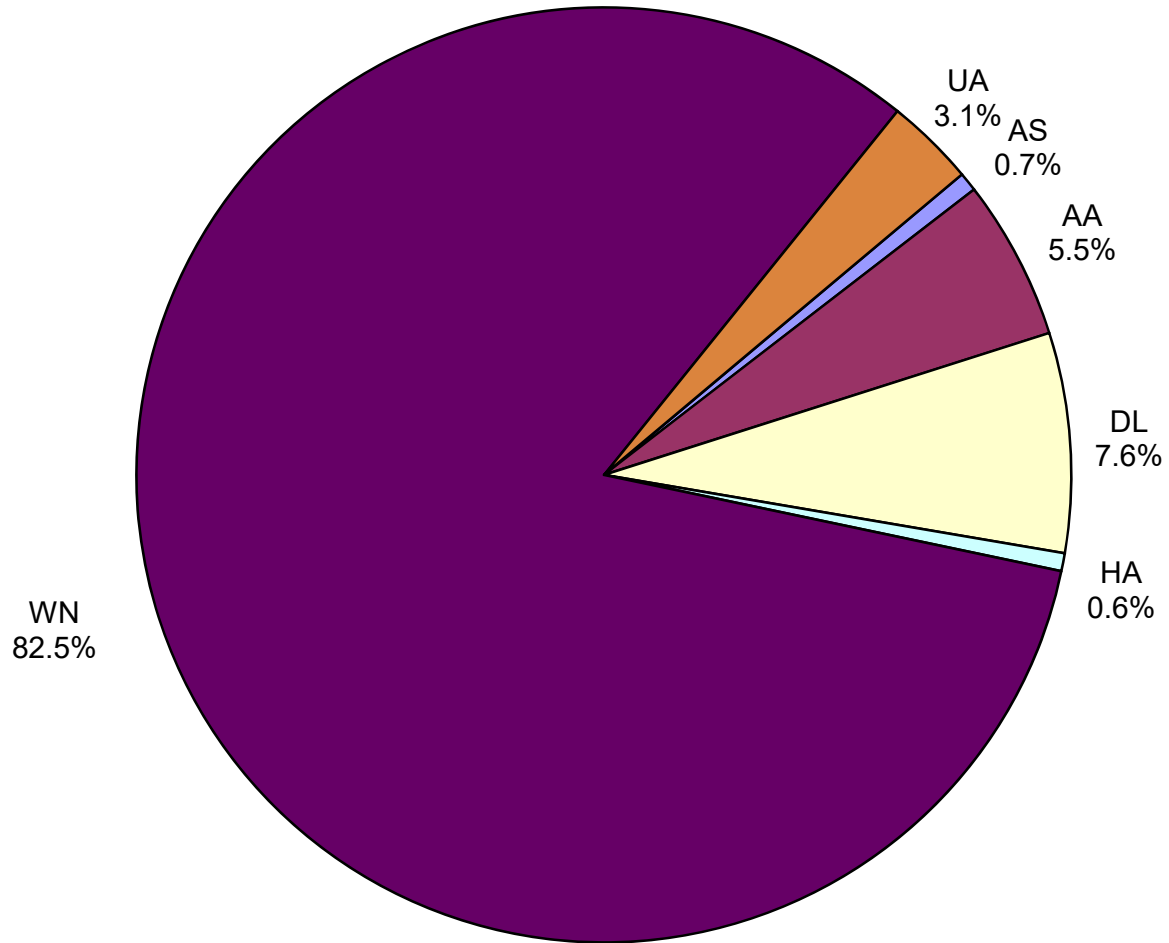
**All Passenger Carriers
Enplaned Revenue Passengers
June 2021**



Other: Hawaiian Airlines, Inc., Sun Country and Swift Air LLC

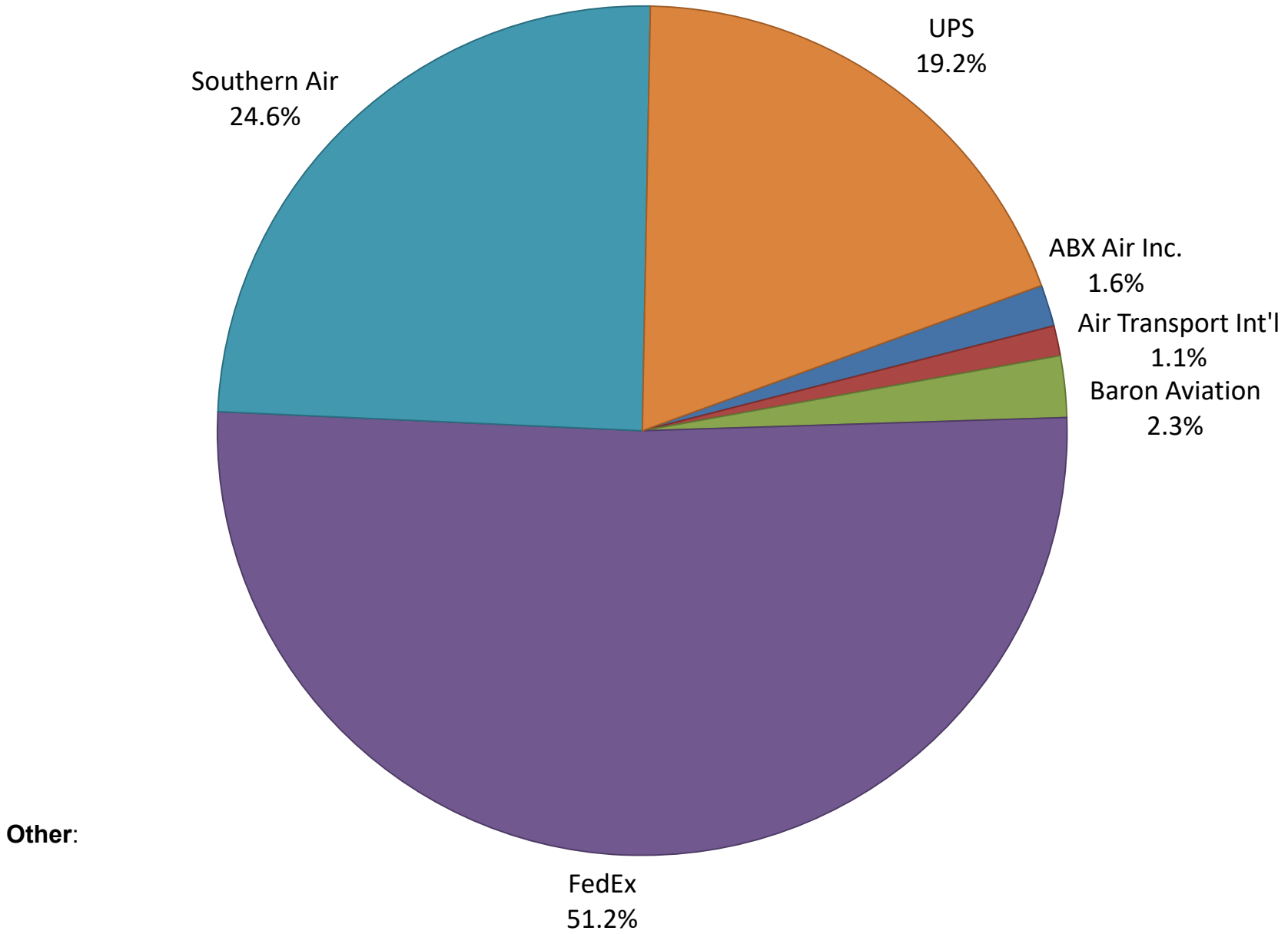
Note: American/US Airways, Delta and United Airlines percentages include Affiliates.

**AUS Belly Freight Market Shares
June 2021**

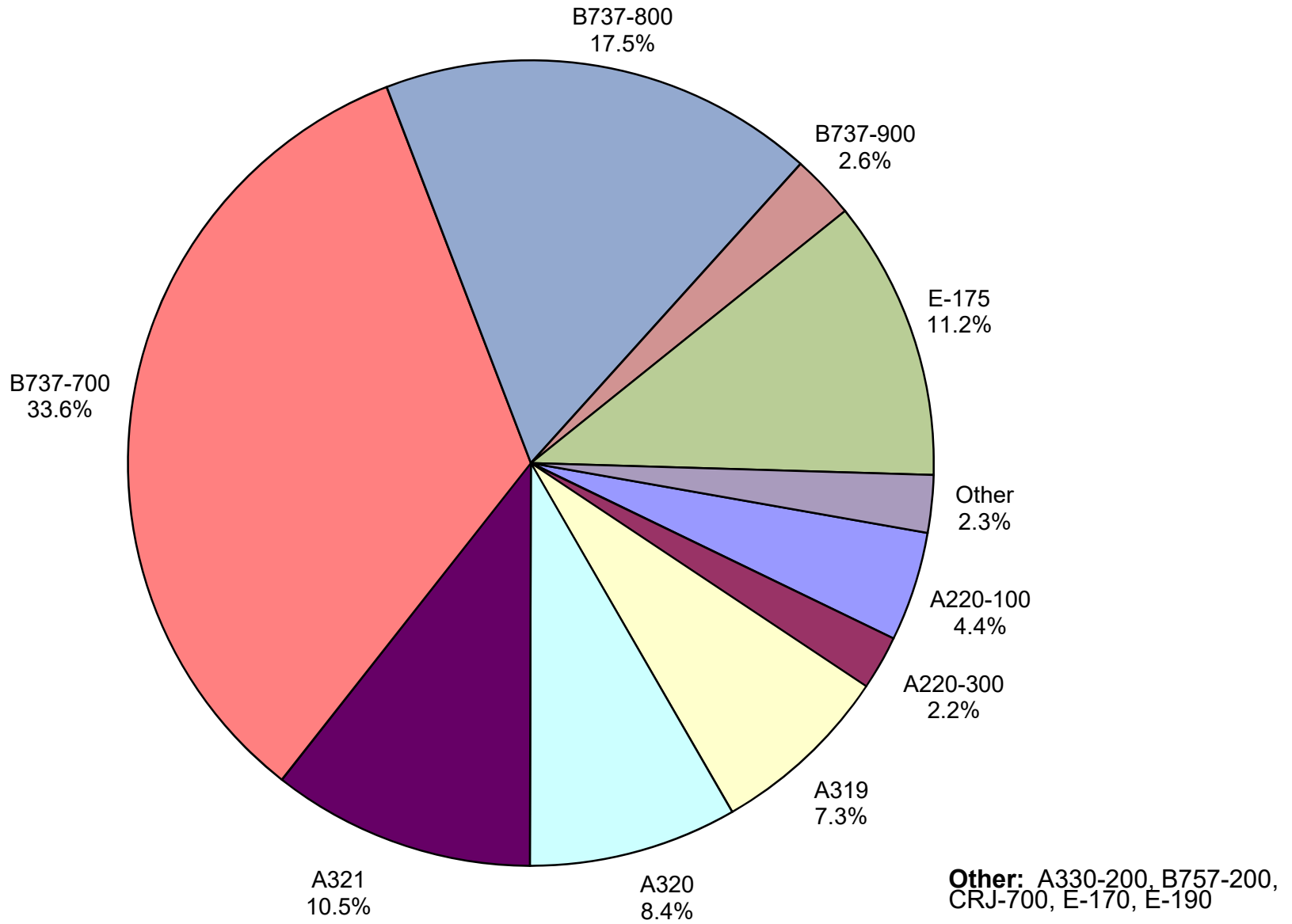


Other =

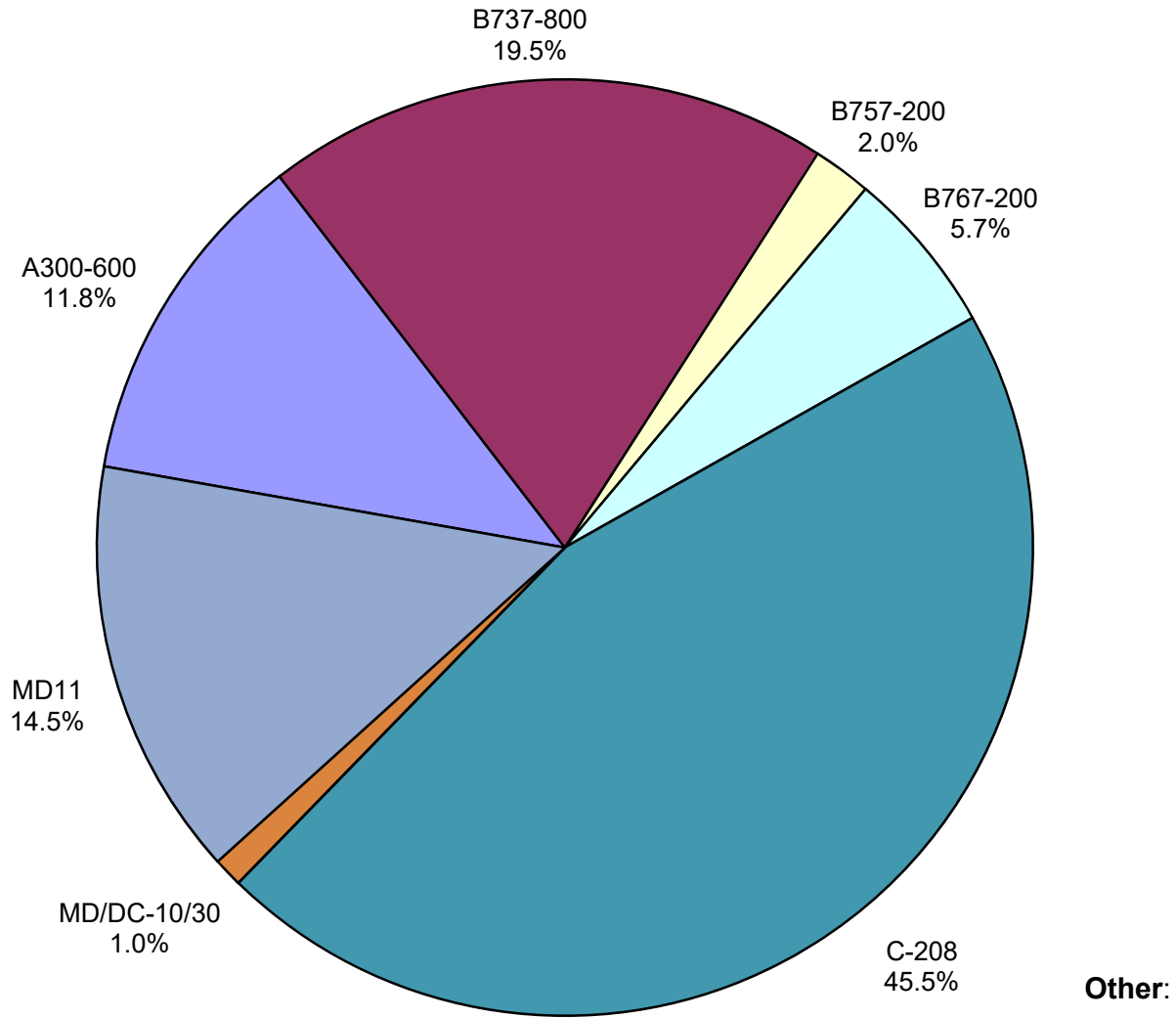
Air Cargo Market Share June 2021



**AUS Scheduled Passenger Aircraft Fleet Mix
June 2021**



**AUS Scheduled Cargo Aircraft Fleet Mix
June 2021**



Austin-Bergstrom International Airport

Pax Detail Report - June, 2021

Company	Period				YTD				2021 Share	2020 Share	Share Diff
	6/2021	6/2020	Difference	Change	YTD 2021	YTD 2020	Difference	Change			
Aeroenlaces Nacionales, SA DE CV	0	0	0	0.0	0	197	-197	-100.0	0.0	0.0	0.0
Aerovias de Mexico S.A. de C.V. Pre Bankruptcy	0	0	0	0.0	0	9,915	-9,915	-100.0	0.0	0.3	-0.3
Air Canada	0	0	0	0.0	0	10,317	-10,317	-100.0	0.0	0.3	-0.3
Alaska Airlines INC	78,979	15,465	63,514	410.7	244,553	140,325	104,228	74.3	5.1	3.8	1.3
Allegiant Air LLC	27,573	16,223	11,350	70.0	75,212	40,065	35,147	87.7	1.6	1.1	0.5
American Airlines INC	313,954	73,703	240,251	326.0	1,075,505	736,946	338,559	45.9	22.3	19.9	2.4
British Airways PLC	0	0	0	0.0	0	29,217	-29,217	-100.0	0.0	0.8	-0.8
Delta Air Lines	190,480	20,968	169,512	808.4	675,111	502,868	172,243	34.3	14.0	13.6	0.4
Deutsche Lufthansa AG	0	0	0	0.0	0	15,883	-15,883	-100.0	0.0	0.4	-0.4
Frontier Airlines INC	21,406	11,497	9,909	86.2	100,486	132,782	-32,296	-24.3	2.1	3.6	-1.5
Hawaiian Airlines Inc	6,384	0	6,384	0.0	11,237	0	11,237	0.0	0.2	0.0	0.2
JetBlue Airways Corporation	43,191	4,714	38,477	816.2	203,153	127,086	76,067	59.9	4.2	3.4	0.8
Miami Air International INC Pre Bankruptcy	0	0	0	0.0	0	121	-121	-100.0	0.0	0.0	0.0
Norwegian Air UK LTD	0	0	0	0.0	0	3,474	-3,474	-100.0	0.0	0.1	-0.1
Southwest Airlines	481,230	130,592	350,638	268.5	1,621,483	1,232,395	389,088	31.6	33.7	33.3	0.4
Spirit Airlines Inc	53,125	3,278	49,847	1,520.7	234,549	212,946	21,603	10.1	4.9	5.8	-0.9
Sun Country Airlines/MN Airlines LLC	4,401	637	3,764	590.9	5,230	1,280	3,950	308.6	0.1	0.0	0.1
Swift Air LLC	197	0	197	0.0	1,143	928	215	23.2	0.0	0.0	0.0
United Airlines INC	149,746	14,501	135,245	932.7	564,925	500,037	64,888	13.0	11.7	13.5	-1.8
Report Totals	1,370,666	291,578	1,079,088	370.1%	4,812,587	3,696,782	1,115,805	30.2%	99.9%	99.9%	

Statistics Included in Report

Domestic Passengers: Enplaned Revenue, Deplaned Revenue, Enplaned Non-Revenue, Deplaned Non-Revenue

International Passengers: Enplaned Revenue, Deplaned Revenue, Enplaned Non-Revenue, Deplaned Non-Revenue

International Pre-Cleared Passengers: Enplaned Revenue, Deplaned Revenue, Enplaned Non-Revenue, Deplaned Non-Revenue

South Terminal Domestic Passengers: Enplaned Revenue, Deplaned Revenue, Enplaned Non-Revenue, Deplaned Non-Revenue

Austin-Bergstrom International Airport

Summary Landings Report

Landing Type: Total

Month	2021		2020		2019		% Change 2021- 2020		% Change 2020- 2019	
	Count	Weight	Count	Weight	Count	Weight	Count	Weight	Count	Weight
January	2,839	399,216,719	5,762	812,175,948	5,348	733,746,679	-50.73%	-50.85%	7.74%	10.69%
February	2,194	303,710,832	5,382	764,833,023	5,040	692,708,930	-59.23%	-60.29%	6.79%	10.41%
March	4,076	547,982,160	5,278	742,099,772	5,964	825,483,911	-22.77%	-26.16%	-11.50%	-10.10%
April	4,345	589,843,731	1,884	264,508,162	5,899	815,621,798	130.63%	123.00%	-68.06%	-67.57%
May	5,035	685,565,245	1,608	223,266,578	6,294	881,747,150	213.12%	207.06%	-74.45%	-74.68%
June	5,854	791,280,681	2,119	293,669,395	6,322	890,410,020	176.26%	169.45%	-66.48%	-67.02%
July	0	0	3,401	458,639,882	6,551	915,103,306	-100.00%	-100.00%	-48.08%	-49.88%
August	0	0	3,390	473,872,571	6,447	906,499,773	-100.00%	-100.00%	-47.42%	-47.73%
September	0	0	2,791	378,925,681	6,020	848,899,951	-100.00%	-100.00%	-53.64%	-55.36%
October	0	0	2,972	409,225,230	6,459	916,700,076	-100.00%	-100.00%	-53.99%	-55.36%
November	0	0	3,157	438,563,290	5,924	836,527,780	-100.00%	-100.00%	-46.71%	-47.57%
December	0	0	3,126	431,926,302	6,078	848,973,148	-100.00%	-100.00%	-48.57%	-49.12%
Totals For Selected Period	24,343	3,317,599,368	22,033	3,100,552,878	34,867	4,839,718,488	10.48%	7.00%	-36.81%	-35.94%
Yearly Totals	24,343	3,317,599,368	40,870	5,691,705,834	72,346	10,112,422,522	-40.44%	-41.71%	-43.51%	-43.72%