

**Austin-Bergstrom International Airport
Aviation Activity Report
Calendar Year 2019 vs 2018**

Combined Terminals

	2/2019	2/2018	Percent Change	1/2019 - 2/2019	1/2018 - 2/2018	Percent Change
ABIA						
Total Passenger Activity						
Domestic Enplaned Revenue	508,356	470,066	8.15	1,011,818	946,103	6.95
Domestic Deplaned Revenue	509,175	469,055	8.55	1,029,076	963,240	6.83
International Enplaned Revenue	7,548	9,003	-16.16	16,766	19,103	-12.23
International Deplaned Revenue	7,974	9,682	-17.64	19,007	21,500	-11.60
Domestic Enplaned Non-Revenue	13,307	12,387	7.43	26,824	25,485	5.25
Domestic Deplaned Non-Revenue	12,670	11,977	5.79	25,747	24,303	5.94
International Enplaned Non-Revenue	128	128	0.00	205	225	-8.89
International Deplaned Non-Revenue	100	68	47.06	177	118	50.00
Intl Enplaned Pre-Cleared Revenue	2,052	1,466	39.97	4,057	2,957	37.20
Intl Deplaned Pre-Cleared Revenue	2,386	1,669	42.96	4,601	3,349	37.38
Intl Enplaned Pre-Cleared Non-Revenue	37	21	76.19	63	47	34.04
Intl Deplaned Pre-Cleared Non-Revenue	40	19	110.53	69	38	81.58
South Terminal Domestic Enplaned Revenue	25,429	11,264	125.75	52,262	21,796	139.78
South Terminal Domestic Deplaned Revenue	26,045	11,241	131.70	53,836	22,603	138.18
South Terminal Domestic Enplaned Non-Revenue	89	3	2,866.67	195	9	2,066.67
South Terminal Domestic Deplaned Non-Revenue	115	3	3,733.33	230	10	2,200.00
ABIA Passenger Totals	1,115,451	1,008,052	10.65	2,244,933	2,050,886	9.46
<i>ABIA Enplaned Passenger Totals</i>	<i>556,946</i>	<i>504,338</i>	<i>10.43</i>	<i>1,112,190</i>	<i>1,015,725</i>	<i>9.50</i>
<i>ABIA Deplaned Passenger Totals</i>	<i>558,505</i>	<i>503,714</i>	<i>10.88</i>	<i>1,132,743</i>	<i>1,035,161</i>	<i>9.43</i>
<i>ABIA Domestic Passenger Totals</i>	<i>1,095,186</i>	<i>985,996</i>	<i>11.07</i>	<i>2,199,988</i>	<i>2,003,549</i>	<i>9.80</i>
<i>ABIA International Passenger Totals</i>	<i>20,265</i>	<i>22,056</i>	<i>-8.12</i>	<i>44,945</i>	<i>47,337</i>	<i>-5.05</i>
CURRENT PASSENGER RECORD = 1,511,634 RECORD SET = JULY 2018						
Total Aircraft Operations						
Air Carrier	9,888	9,133	8.27	20,357	18,980	7.26
Commuter & Air Taxi	1,223	1,400	-12.64	2,511	2,690	-6.65
Military	679	361	88.09	1,556	1,055	47.49
General Aviation						
Itinerant	3,137	3,088	1.59	6,812	6,745	0.99
Local	56	104	-46.15	122	165	-26.06
Total G.A.	3,193	3,192	0.03	6,934	6,910	0.35
Total Operations	14,983	14,086	6.37	31,358	29,635	5.81

**Austin-Bergstrom International Airport
Aviation Activity Report
Calendar Year 2019 vs 2018**

By Terminal

	2/2019	2/2018	Percent Change	1/2019 - 2/2019	1/2018 - 2/2018	Percent Change
<u>Barbara Jordan Terminal (BJT)</u>						
Passenger Activity						
Domestic Enplaned Revenue	508,356	470,066	8.15	1,011,818	946,103	6.95
Domestic Deplaned Revenue	509,175	469,055	8.55	1,029,076	963,240	6.83
International Enplaned Revenue	7,548	9,003	-16.16	16,766	19,103	-12.23
International Deplaned Revenue	7,974	9,682	-17.64	19,007	21,500	-11.60
Domestic Enplaned Non-Revenue	13,307	12,387	7.43	26,824	25,485	5.25
Domestic Deplaned Non-Revenue	12,670	11,977	5.79	25,747	24,303	5.94
International Enplaned Non-Revenue	128	128	0.00	205	225	-8.89
International Deplaned Non-Revenue	100	68	47.06	177	118	50.00
Intl Enplaned Pre-Cleared Revenue	2,052	1,466	39.97	4,057	2,957	37.20
Intl Deplaned Pre-Cleared Revenue	2,386	1,669	42.96	4,601	3,349	37.38
Intl Enplaned Pre-Cleared Non-Revenue	37	21	76.19	63	47	34.04
Intl Deplaned Pre-Cleared Non-Revenue	40	19	110.53	69	38	81.58
Barbara Jordan Terminal Passenger Totals	1,063,773	985,541	7.94	2,138,410	2,006,468	6.58
<i>BJT Enplaned Passenger Totals</i>	<i>531,428</i>	<i>493,071</i>	<i>7.78</i>	<i>1,059,733</i>	<i>993,920</i>	<i>6.62</i>
<i>BJT Deplaned Passenger Totals</i>	<i>532,345</i>	<i>492,470</i>	<i>8.10</i>	<i>1,078,677</i>	<i>1,012,548</i>	<i>6.53</i>
<i>BJT Domestic Passenger Totals</i>	<i>1,043,508</i>	<i>963,485</i>	<i>8.31</i>	<i>2,093,465</i>	<i>1,959,131</i>	<i>6.86</i>
<i>BJT International Passenger Totals</i>	<i>20,265</i>	<i>22,056</i>	<i>-8.12</i>	<i>44,945</i>	<i>47,337</i>	<i>-5.05</i>
<u>South Terminal (ST)</u>						
Passenger Activity						
South Terminal Domestic Enplaned Revenue	25,429	11,264	125.75	52,262	21,796	139.78
South Terminal Domestic Deplaned Revenue	26,045	11,241	131.70	53,836	22,603	138.18
South Terminal Domestic Enplaned Non-Revenue	89	3	2866.67	195	9	2066.67
South Terminal Domestic Deplaned Non-Revenue	115	3	3733.33	230	10	2200.00
South Terminal Passenger Totals	51,678	22,511	129.57	106,523	44,418	139.82
<i>ST Enplaned Passenger Totals</i>	<i>25,518</i>	<i>11,267</i>	<i>126.48</i>	<i>52,457</i>	<i>21,805</i>	<i>140.57</i>
<i>ST Deplaned Passenger Totals</i>	<i>26,160</i>	<i>11,244</i>	<i>132.66</i>	<i>54,066</i>	<i>22,613</i>	<i>139.09</i>

**Austin-Bergstrom International Airport
Aviation Activity Report
Calendar Year 2019 vs 2018**

	2/2019	2/2018	Percent Change	1/2019 - 2/2019	1/2018 - 2/2018	Percent Change
<u>Total Cargo Activity</u>						
Mail						
Domestic Enplaned Mail	223,172	205,270	8.72	416,635	315,797	31.93
Domestic Deplaned Mail	661,281	368,360	79.52	1,314,152	781,079	68.25
International Enplaned Mail	0	0	0.00	0	0	0.00
International Deplaned Mail	0	0	0.00	110,830	0	0.00
South Terminal-Domestic Enplaned Mail	0	0	0.00	0	0	0.00
South Terminal-Domestic Deplaned Mail	0	0	0.00	0	0	0.00
Mail Totals	884,453	573,630	54.19	1,841,617	1,096,876	67.90
Cargo						
Domestic Enplaned Cargo	4,399,157	4,622,182	-4.83	9,221,677	9,295,272	-0.79
Domestic Deplaned Cargo	6,192,261	6,316,572	-1.97	13,230,039	13,211,700	0.14
International Enplaned Cargo	235,581	645,915	-63.53	442,247	1,144,937	-61.37
International Deplaned Cargo	157,113	182,506	-13.91	260,893	336,697	-22.51
South Terminal-Domestic Enplaned Cargo	0	0	0.00	0	0	0.00
South Terminal-Domestic Deplaned Cargo	0	0	0.00	0	0	0.00
Cargo Totals	10,984,112	11,767,175	-6.65	23,154,856	23,988,606	-3.48
Belly Freight						
Domestic Enplaned Belly Freight	299,726	214,100	39.99	593,965	513,956	15.57
Domestic Deplaned Belly Freight	477,875	408,520	16.98	958,004	796,229	20.32
International Enplaned Belly Freight	494,360	309,357	59.80	718,465	532,769	34.85
International Deplaned Belly Freight	865,465	697,906	24.01	1,463,938	1,181,664	23.89
South Terminal-Domestic Enplaned Belly Frght	0	0	0.00	0	0	0.00
South Terminal-Domestic Deplaned Belly Frght	0	0	0.00	0	0	0.00
Belly Freight Totals	2,137,426	1,629,883	31.14	3,734,372	3,024,618	23.47
Cargo Totals (Mail, Cargo, Belly Freight)	14,005,991	13,970,688	0.25	28,730,845	28,110,100	2.21
<i>Enplaned Cargo Totals</i>	<i>5,651,996</i>	<i>5,996,824</i>	<i>-5.75</i>	<i>11,392,989</i>	<i>11,802,731</i>	<i>-3.47</i>
<i>Deplaned Cargo Totals</i>	<i>8,353,995</i>	<i>7,973,864</i>	<i>4.77</i>	<i>17,337,856</i>	<i>16,307,369</i>	<i>6.32</i>
<i>Domestic Cargo Totals</i>	<i>12,253,472</i>	<i>12,135,004</i>	<i>0.98</i>	<i>25,734,472</i>	<i>24,914,033</i>	<i>3.29</i>
<i>International Cargo Totals</i>	<i>1,752,519</i>	<i>1,835,684</i>	<i>-4.53</i>	<i>2,996,373</i>	<i>3,196,067</i>	<i>-6.25</i>

CURRENT CARGO RECORD = 40,215,518

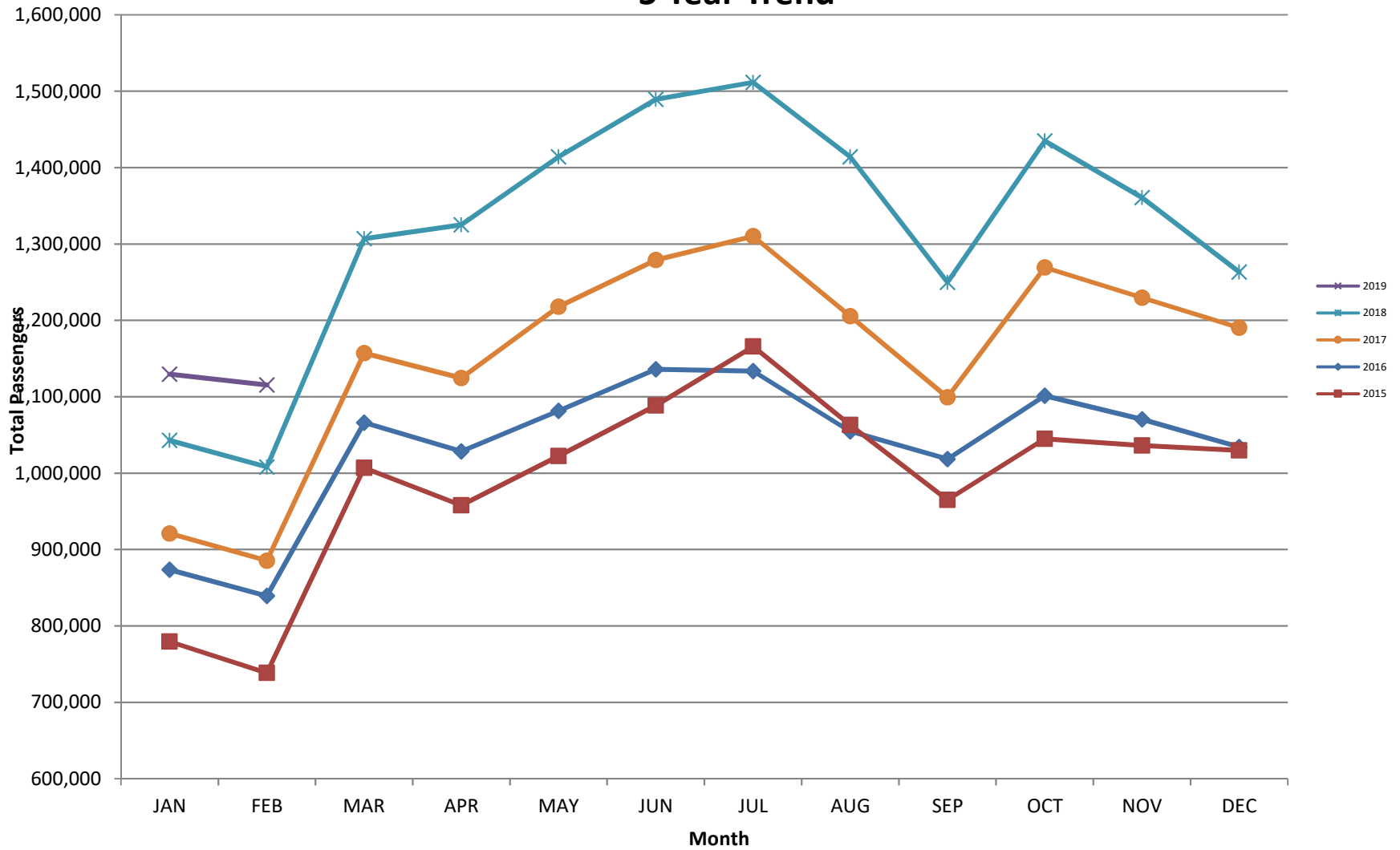
RECORD SET = MARCH 2001

AUS – Airline Codes
February 2019

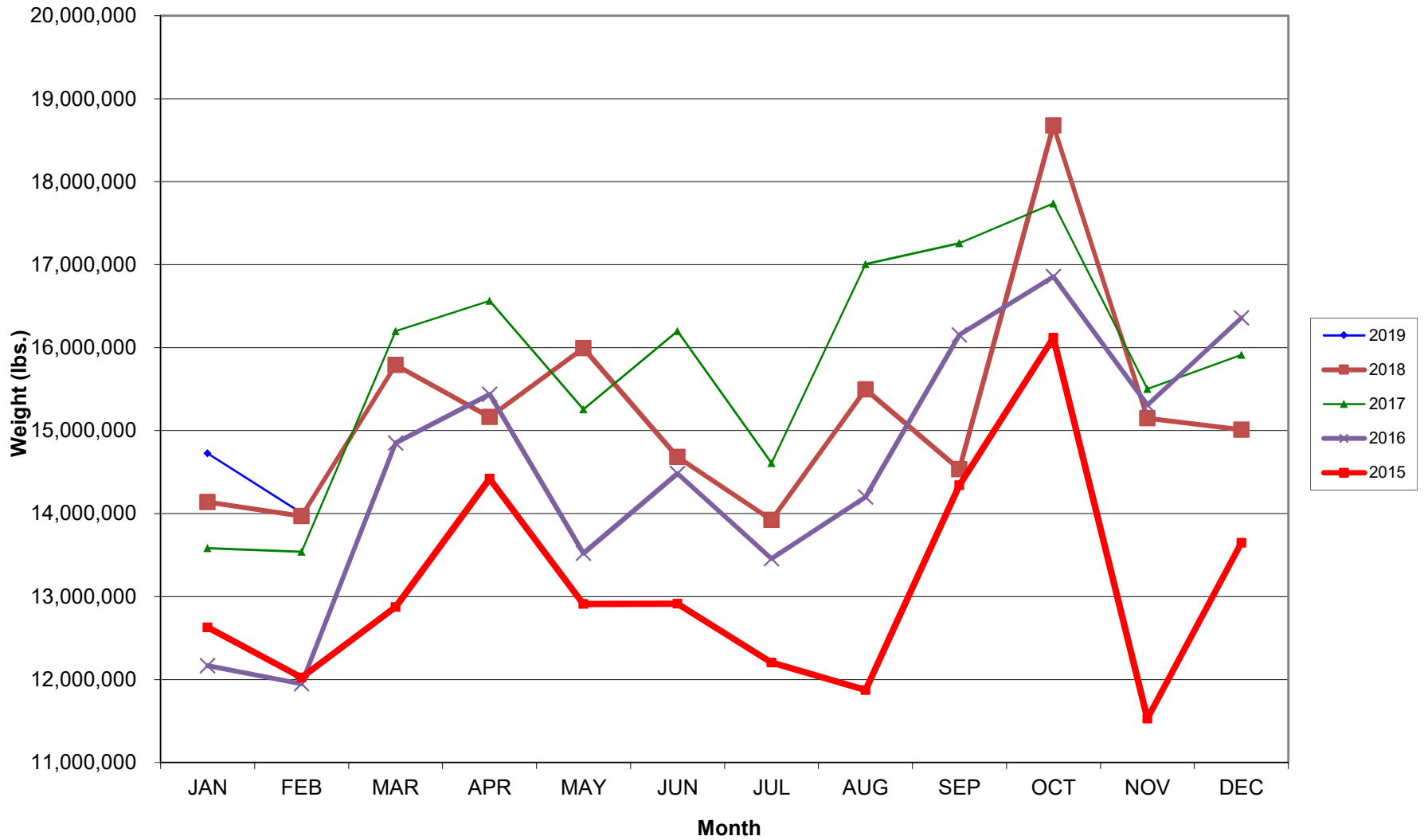
<u>Code</u>	<u>Carrier</u>
AM	Aerovias de Mexico S.A. de C.V. dba AeroMexico Airlines
AC	Air Canada
AS	Alaska Airlines, Inc. (Includes Virgin America. Merger effective 2/1/2018)
G4	Allegiant Air, LLC
AA	American Airlines, Inc.
BA	British Airways Plc
DL	Delta Airlines
F9	Frontier Airlines
B6	JetBlue Airways Corp.
LL	Miami Air International
WN	Southwest Airlines
NK	Spirit Airlines
SY	Sun Country Airlines
WQ	Swift Air
UA	United Airlines, Inc.
VC	VIA Airlines

AUSTIN PASSENGER TRAFFIC

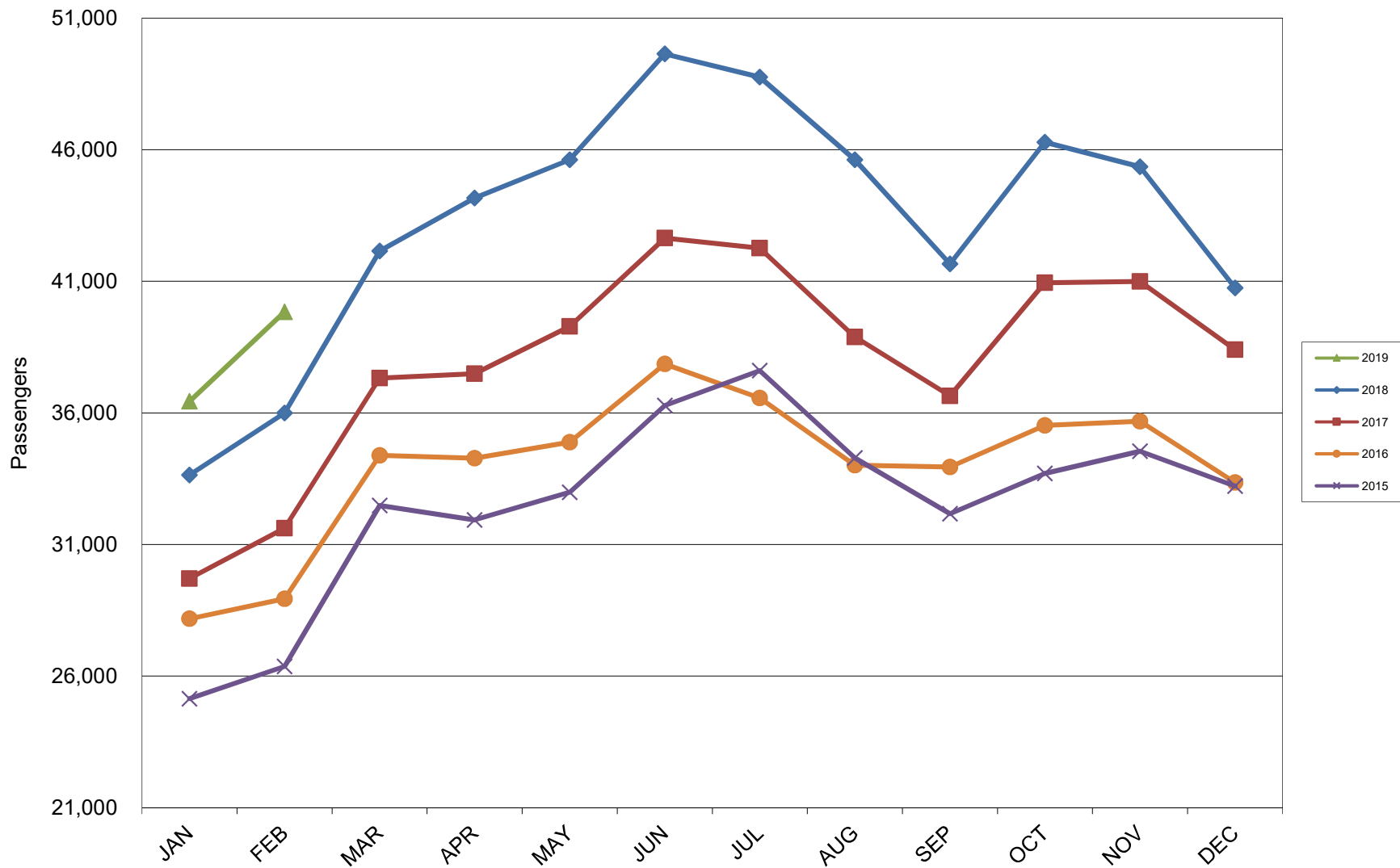
5 Year Trend



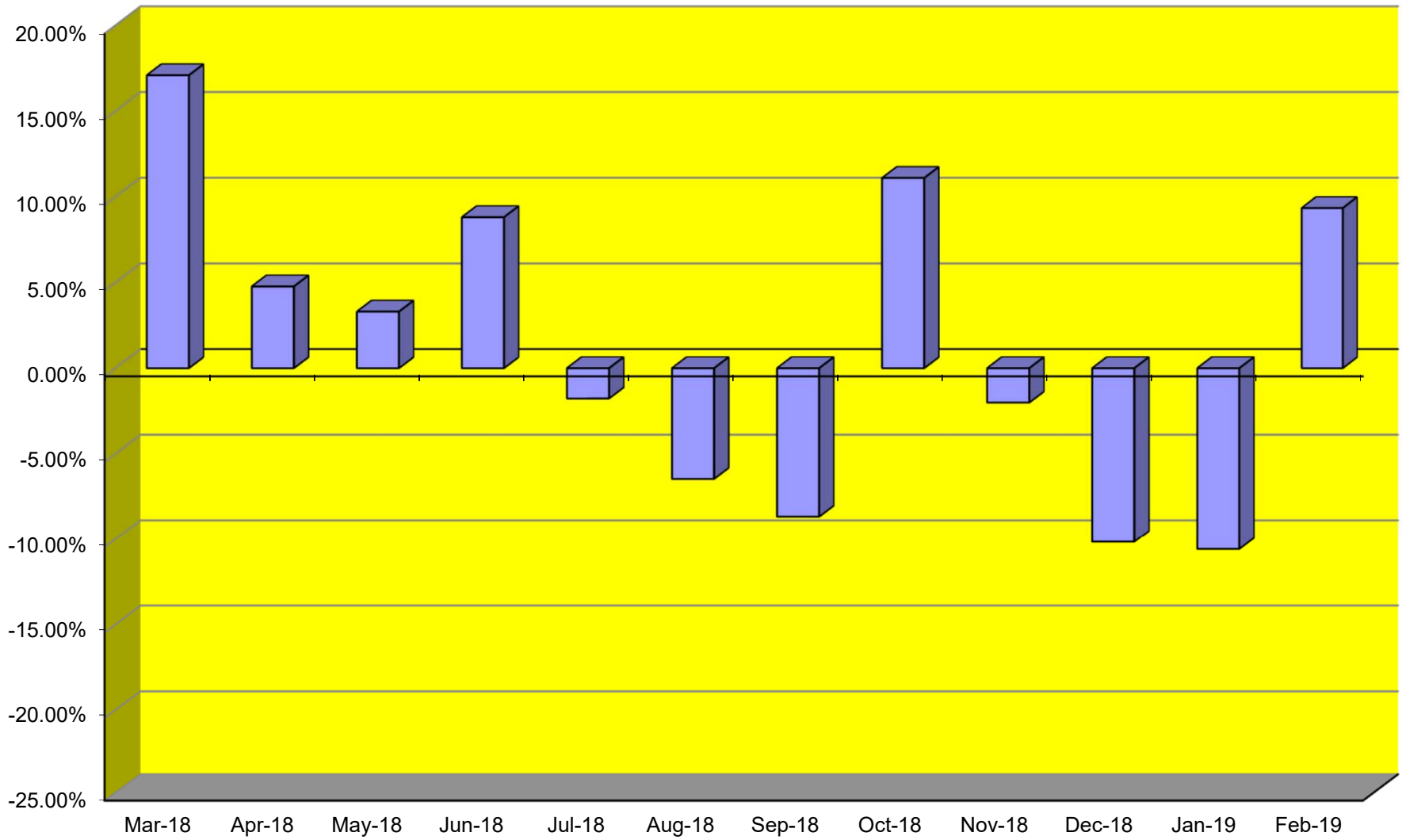
TOTAL CARGO POUNDAGE - AUSTIN, TEXAS



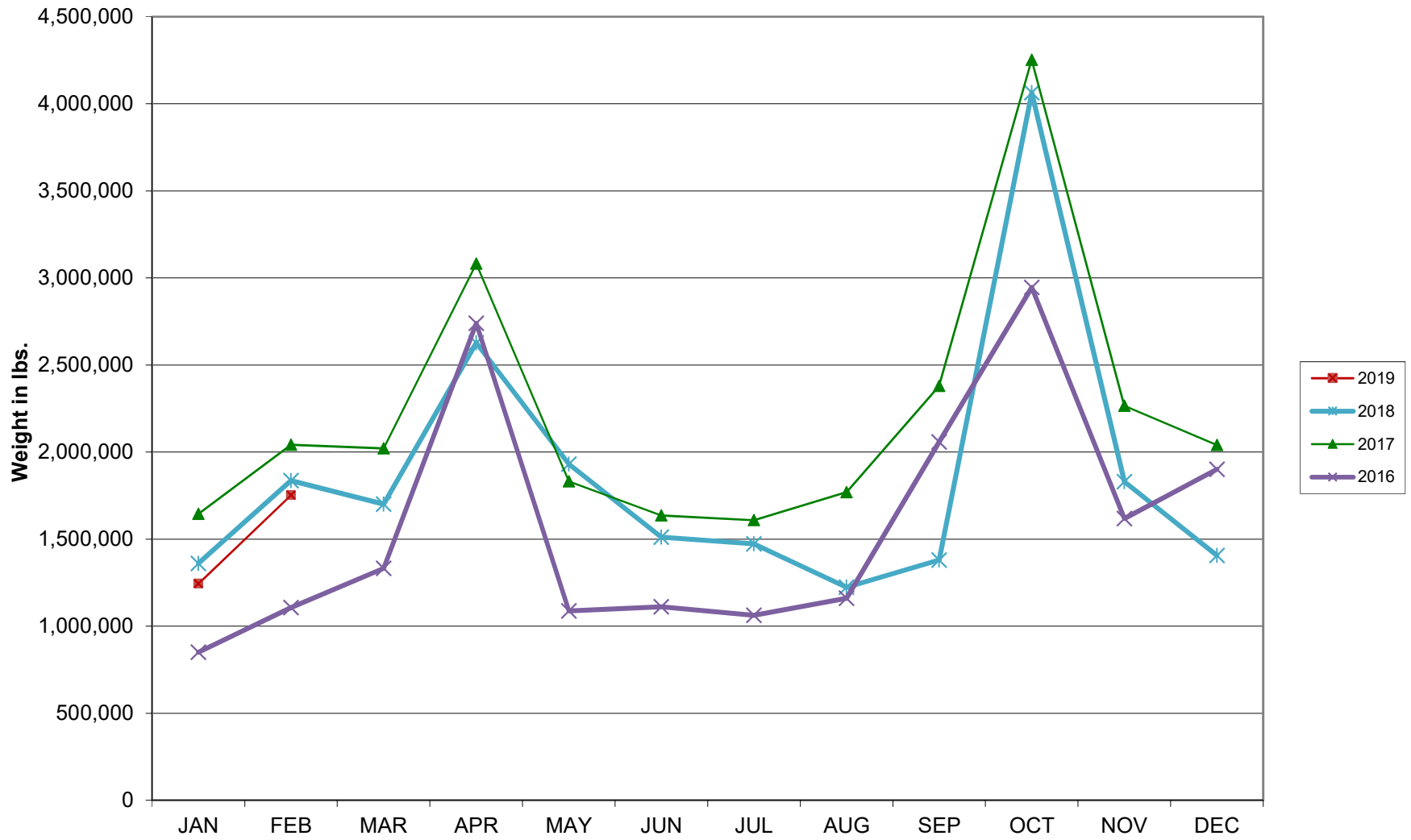
Average Daily Passengers



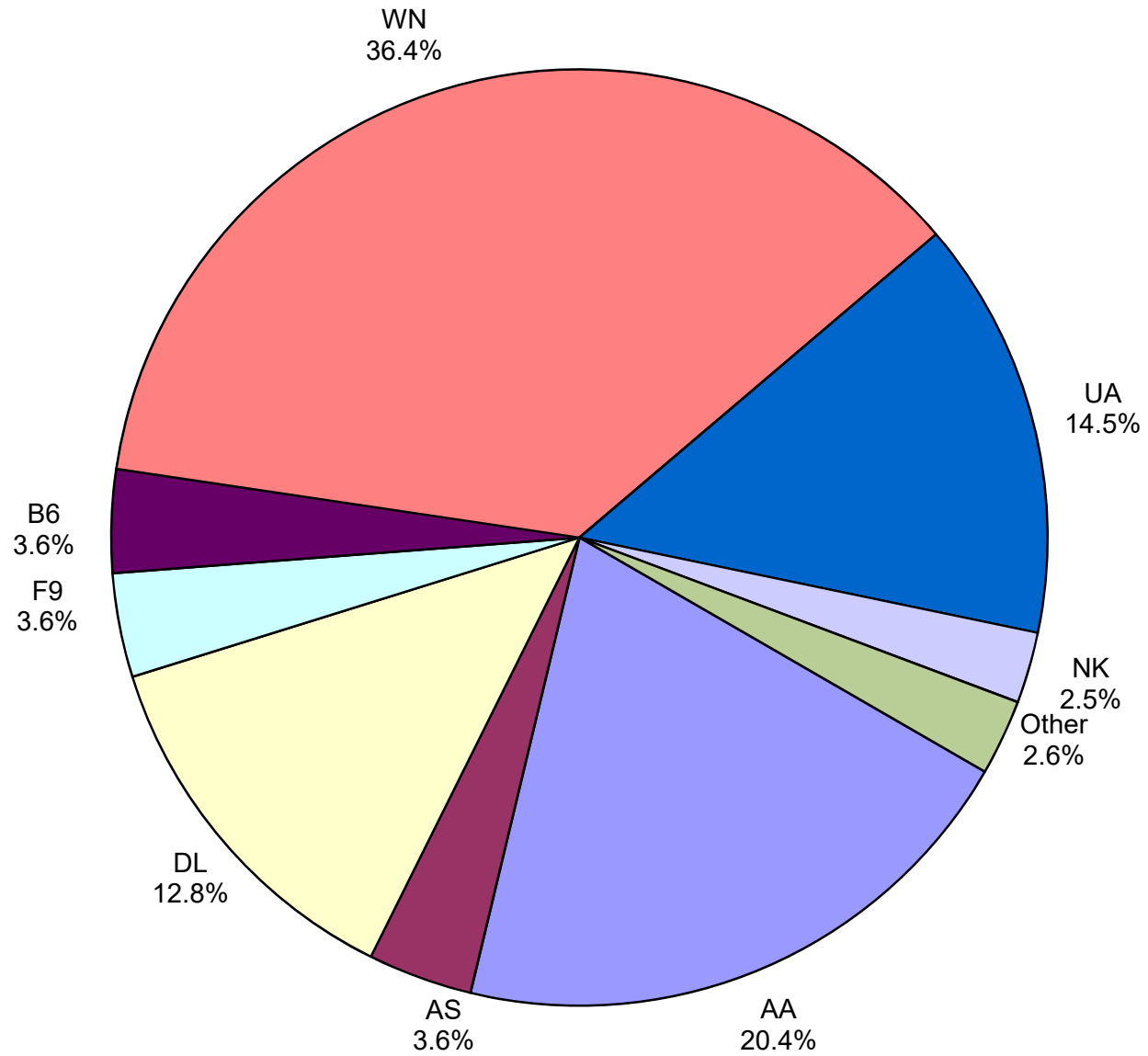
Monthly % Change in Average Daily Passengers



HISTORY OF INTERNATIONAL AIR CARGO



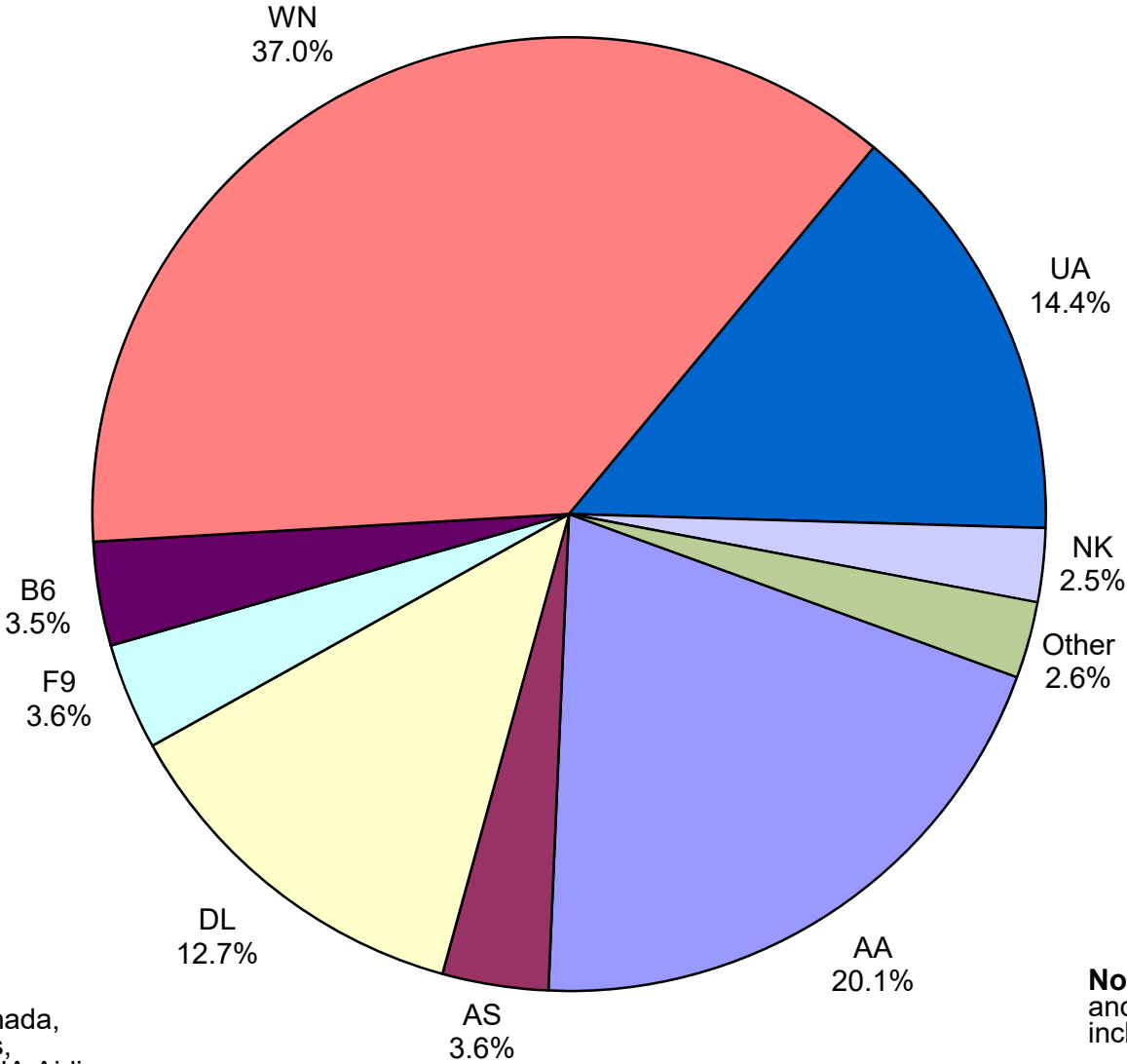
Total Passengers February 2019



Other: Aeromexico, Air Canada LLC, Allegiant Air, British Airways, Miami Air, Sun Country, Swift Air and VIA Airlines

Note: American, Delta and United Airlines percentages include Affiliates.

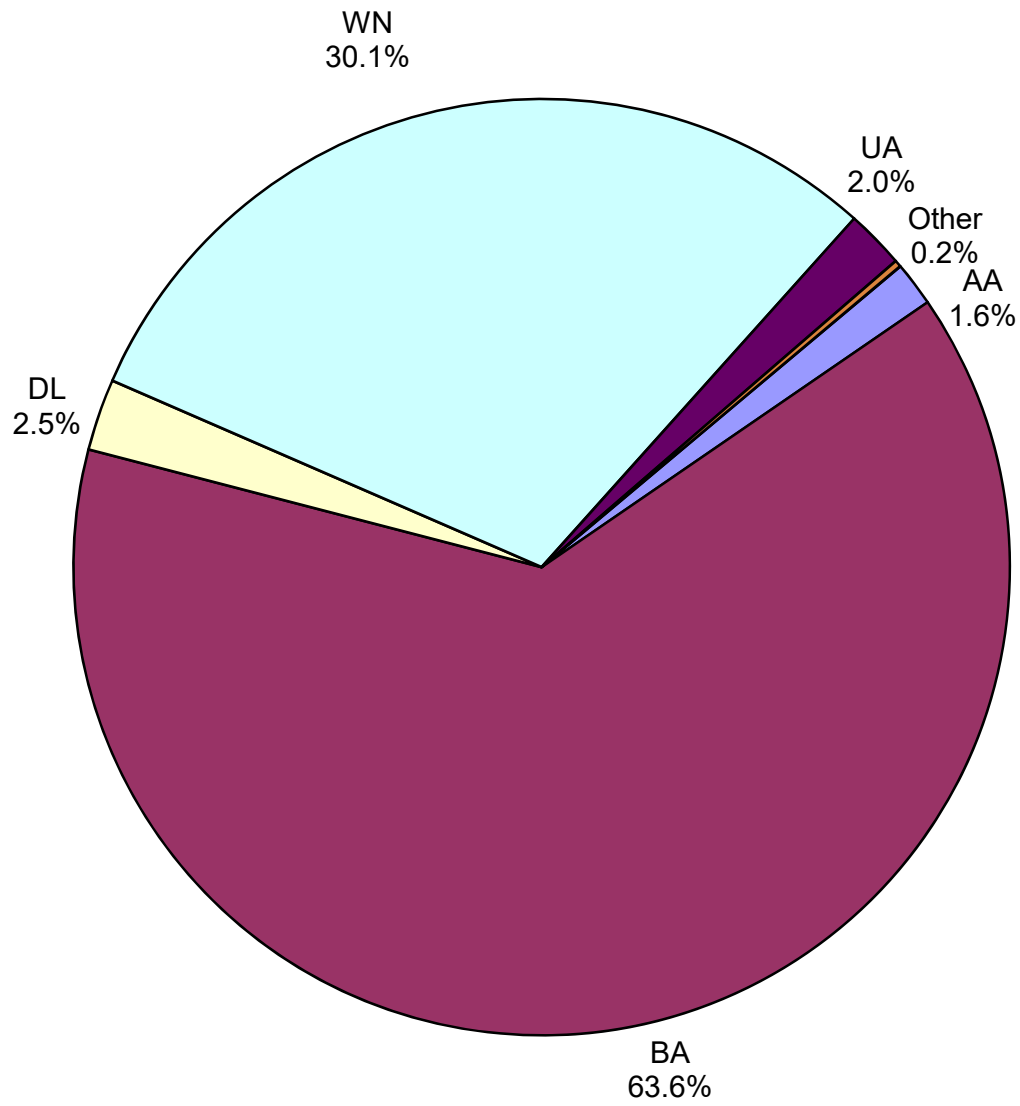
**All Passenger Carriers
Enplaned Revenue Passengers
February 2019**



Other: Aeromexico, Air Canada, Allegiant Air, British Airways, Sun Country Airlines and VIA Airlines

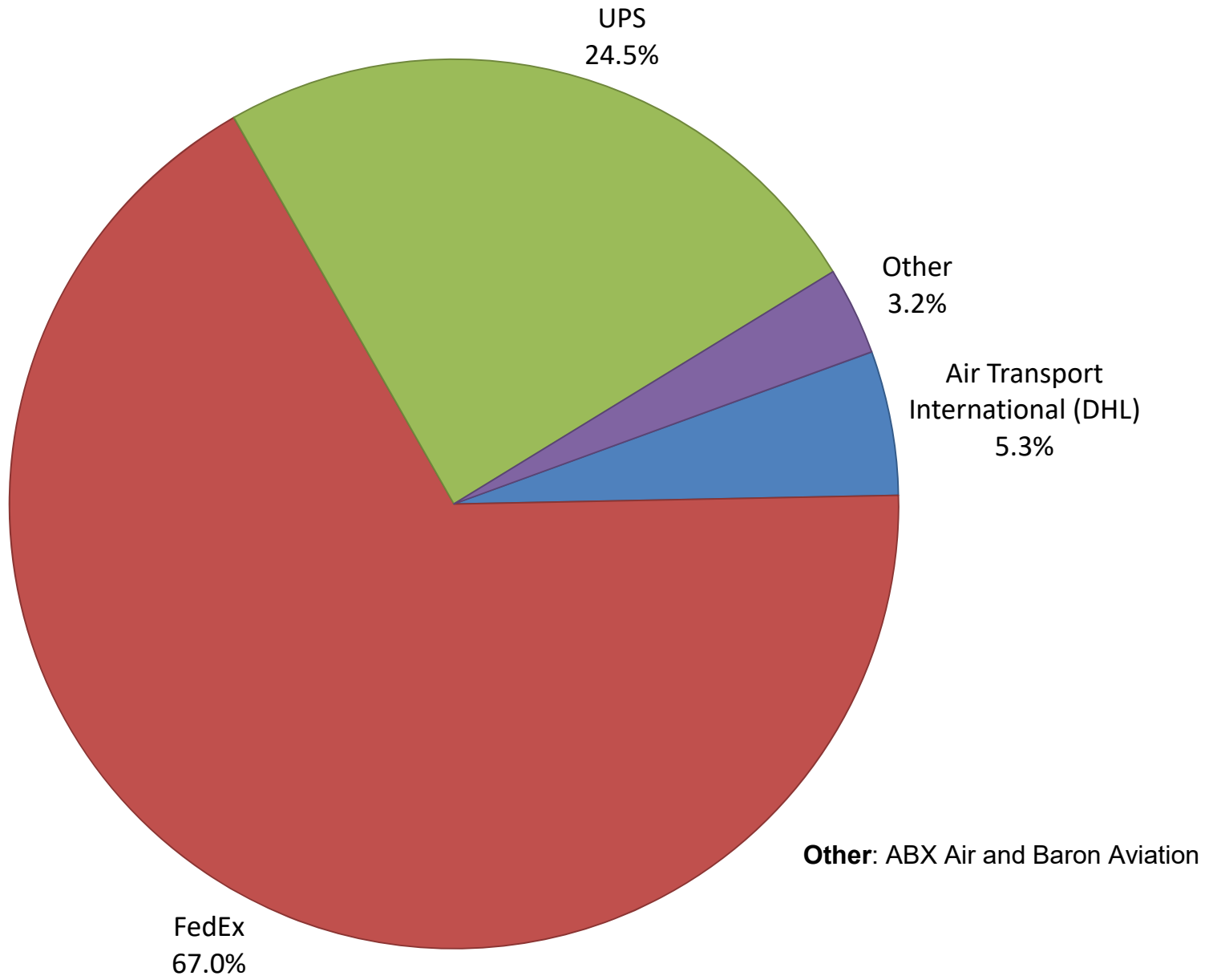
Note: American/US Airways, Delta and United Airlines percentages include Affiliates.

**AUS Belly Freight Market Shares
February 2019**

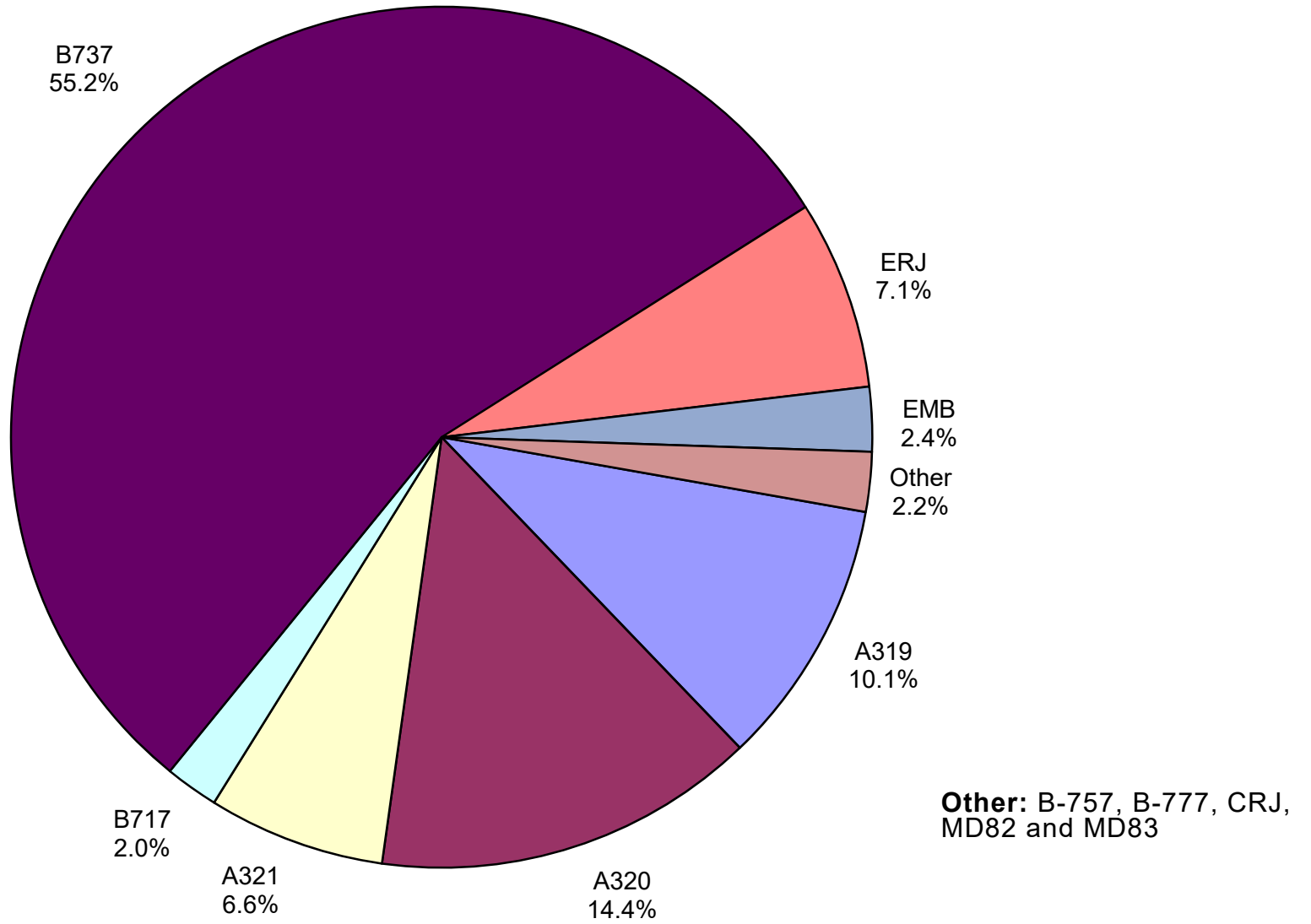


Other = Alaska Airlines

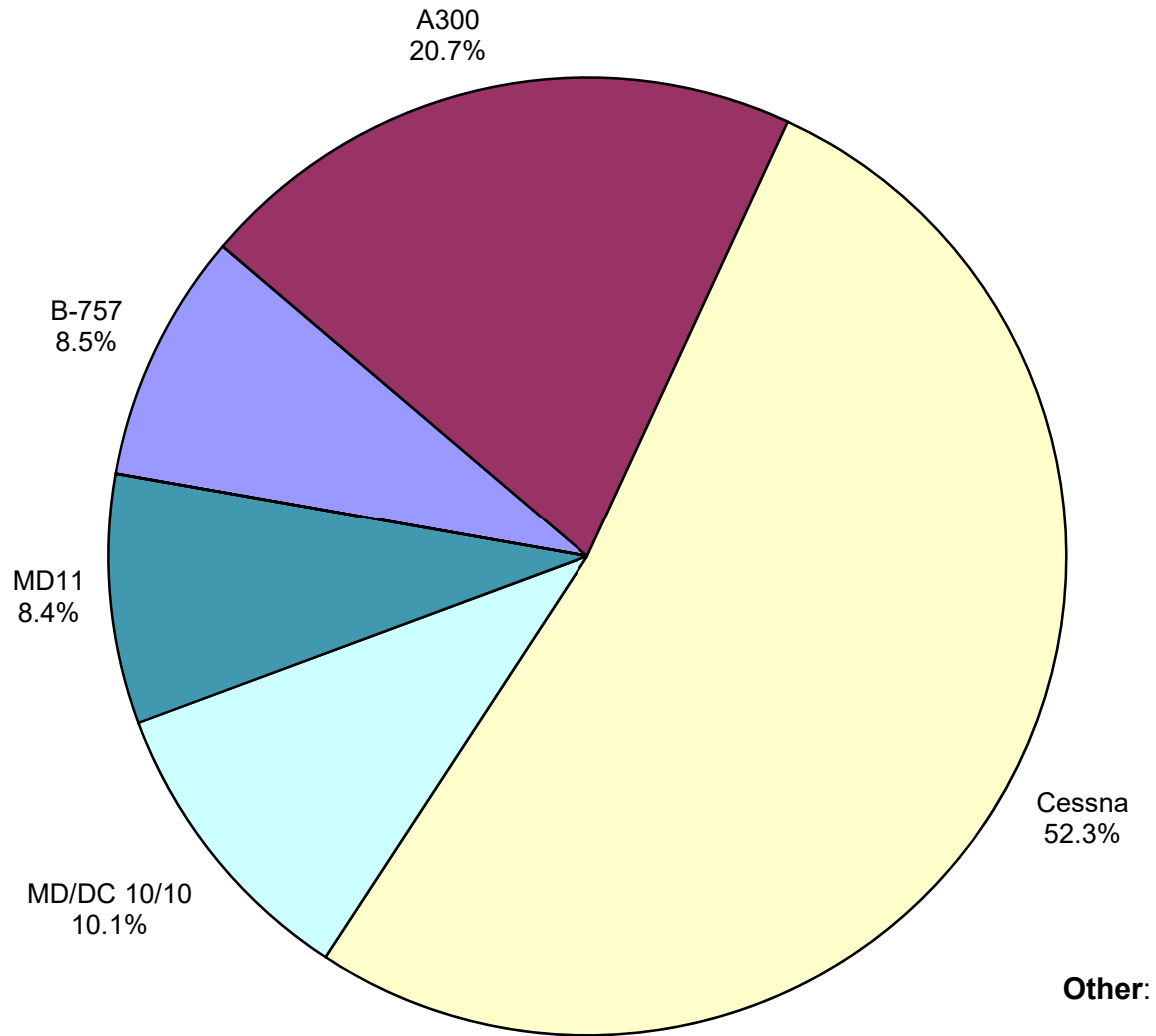
Air Cargo Market Share February 2019



**AUS Scheduled Passenger Aircraft Fleet Mix
February 2019**



**AUS Scheduled Cargo Aircraft Fleet Mix
February 2019**



Austin-Bergstrom International Airport

PAX Detail Report - February, 2019

Company	02/2019	02/2018	Period		YTD 2019	YTD 2018	YTD		2019 Share	2018 Share	Share Diff
			Difference	Change			Difference	Change			
Aerovias de Mexico S.A. de C.V.	2,260	2,828	-568	-20.1	5,503	6,228	-725	-11.6	0.2	0.3	-0.1
Air Canada	4,515	3,175	1,340	42.2	8,790	6,391	2,399	37.5	0.4	0.3	0.1
Alaska Airlines	40,287	41,627	-1,340	-3.2	83,550	70,052	13,498	19.3	3.7	3.4	0.3
Allegiant Air	11,388	21,304	-9,916	-46.5	19,858	41,501	-21,643	-52.2	0.9	2.0	-1.1
American Airlines	227,608	192,706	34,902	18.1	461,407	392,962	68,445	17.4	20.6	19.2	1.4
British Airways	9,989	9,056	933	10.3	22,824	19,637	3,187	16.2	1.0	1.0	0.1
Concesionaria Vuela Compañía de Aviación, S.A.P.I. de C.V.	0	647	-647	-100.0	434	1,871	-1,437	-76.8	0.0	0.1	-0.1
Delta Air Lines	143,285	132,369	10,916	8.2	290,015	263,863	26,152	9.9	12.9	12.9	0.1
Frontier Airlines	40,060	41,575	-1,515	-3.6	85,921	83,816	2,105	2.5	3.8	4.1	-0.3
JetBlue Airways	39,711	42,776	-3,065	-7.2	81,607	86,240	-4,633	-5.4	3.6	4.2	-0.6
Miami Air International	124	0	124	0.0	124	0	124	0.0	0.0	0.0	0.0
Southwest Airlines	406,453	375,517	30,936	8.2	823,174	772,448	50,726	6.6	36.7	37.7	-1.0
Spirit Airlines	27,396	0	27,396	0.0	27,396	0	27,396	0.0	1.2	0.0	1.2
Sun Country Airlines	600	229	371	162.0	1,190	898	292	32.5	0.1	0.0	0.0
Swift Air	59	0	59	0.0	462	266	196	73.7	0.0	0.0	0.0
United Airlines	161,486	143,265	18,221	12.7	331,934	291,577	40,357	13.8	14.8	14.2	0.6
VIA Airlines	230	978	-748	-76.5	744	2,019	-1,275	-63.2	0.0	0.1	-0.1
Virgin America	0	0	0	0.0	0	11,117	-11,117	-100.0	0.0	0.5	-0.5
Report Totals	1,115,451	1,008,052	107,399	10.7%	2,244,933	2,050,886	194,047	9.5%			

Statistics Included in Report:

Domestic Passengers:	Enplaned Revenue, Deplaned Revenue, Enplaned Non-Revenue, Deplaned Non-Revenue
International Passengers:	Enplaned Revenue, Deplaned Revenue, Enplaned Non-Revenue, Deplaned Non-Revenue
International Pre-Cleared Passengers:	Enplaned Revenue, Deplaned Revenue, Enplaned Non-Revenue, Deplaned Non-Revenue
South Terminal Domestic Passengers:	Enplaned Revenue, Deplaned Revenue, Enplaned Non-Revenue, Deplaned Non-Revenue

Austin-Bergstrom International Airport

Summary Landing Report

Landing Type: Total

Month	2019		2018		2017		% Change 2019 - 2018		% Change 2018 - 2017	
	Count	Weight	Count	Weight	Count	Weight	Count	Weight	Count	Weight
January	5,348	733,746,679	5,086	688,923,110	4,768	612,688,871	5.15%	6.51%	6.67%	12.44%
February	5,040	692,708,930	4,706	637,500,756	4,357	552,711,639	7.10%	8.66%	8.01%	15.34%
March			5,643	760,648,260	5,307	685,661,659			6.33%	10.94%
April			5,797	793,367,736	5,179	689,402,051			11.93%	15.08%
May			6,117	831,431,763	5,529	736,484,083			10.63%	12.89%
June			6,211	852,438,818	5,603	752,628,599			10.85%	13.26%
July			6,346	869,502,671	5,698	763,088,836			11.37%	13.95%
August			6,245	861,046,997	5,490	741,110,019			13.75%	16.18%
September			5,737	790,731,351	5,046	679,381,339			13.69%	16.39%
October			6,078	846,310,860	5,448	743,973,610			11.56%	13.76%
November			5,684	780,994,101	5,289	718,179,948			7.47%	8.75%
December			5,600	761,317,385	5,442	737,424,963			2.90%	3.24%
Totals for Selected Period	10,388	1,426,455,609	9,792	1,326,423,866	9,125	1,165,400,510	6.09%	7.54%	7.31%	13.82%
Yearly Totals	10,388	1,426,455,609	69,250	9,474,213,808	63,156	8,412,735,617			9.65%	12.62%