

**Austin-Bergstrom International Airport
Aviation Activity Report
Calendar Year 2021 vs 2020**

Combined Terminals

	1/2021	1/2020	Percent Change	1/2021 - 1/2021	1/2020 - 1/2020	Percent Change
ABIA						
Total Passenger Activity						
Domestic Enplaned Revenue	186,572	575,807	-67.60%	186,572	575,807	-67.60%
Domestic Deplaned Revenue	196,606	595,321	-66.97%	196,606	595,321	-66.97%
International Enplaned Revenue	589	12,391	-95.25%	589	12,391	-95.25%
International Deplaned Revenue	961	13,958	-93.12%	961	13,958	-93.12%
Domestic Enplaned Non-Revenue	7,009	14,126	-50.38%	7,009	14,126	-50.38%
Domestic Deplaned Non-Revenue	6,858	12,918	-46.91%	6,858	12,918	-46.91%
International Enplaned Non-Revenue	12	124	-90.32%	12	124	-90.32%
International Deplaned Non-Revenue	9	104	-91.35%	9	104	-91.35%
Intl Enplaned Pre-Cleared Revenue	0	2,026	-100.00%	0	2,026	-100.00%
Intl Deplaned Pre-Cleared Revenue	0	1,886	-100.00%	0	1,886	-100.00%
Intl Enplaned Pre-Cleared Non-Revenue	0	39	-100.00%	0	39	-100.00%
Intl Deplaned Pre-Cleared Non-Revenue	0	45	-100.00%	0	45	-100.00%
South Terminal Domestic Enplaned Revenue	7,569	23,804	-68.20%	7,569	23,804	-68.20%
South Terminal Domestic Deplaned Revenue	7,849	25,744	-69.51%	7,849	25,744	-69.51%
South Terminal Domestic Enplaned Non-Revenue	43	86	-50.00%	43	86	-50.00%
South Terminal Domestic Deplaned Non-Revenue	40	94	-57.45%	40	94	-57.45%
ABIA Passenger Totals	414,117	1,278,473	-67.61	414,117	1,278,473	-67.61
<i>ABIA Enplaned Passenger Totals</i>	<i>201,794</i>	<i>628,403</i>	<i>-67.89</i>	<i>201,794</i>	<i>628,403</i>	<i>-67.89</i>
<i>ABIA Deplaned Passenger Totals</i>	<i>212,323</i>	<i>650,070</i>	<i>-67.34</i>	<i>212,323</i>	<i>650,070</i>	<i>-67.34</i>
<i>ABIA Domestic Passenger Totals</i>	<i>412,546</i>	<i>1,247,900</i>	<i>-66.94</i>	<i>412,546</i>	<i>1,247,900</i>	<i>-66.94</i>
<i>ABIA International Passenger Totals</i>	<i>1,571</i>	<i>30,573</i>	<i>-94.86</i>	<i>1,571</i>	<i>30,573</i>	<i>-94.86</i>

CURRENT PASSENGER RECORD = 1,643,016 RECORD SET = JULY 2019

Total Aircraft Operations

Air Carrier	5,482	11,320	-51.57%	5,482	11,320	-51.57%
Commuter & Air Taxi	1,391	1,314	5.86%	1,391	1,314	5.86%
Military	405	435	-6.90%	405	435	-6.90%
General Aviation						
Itinerant	3,108	3,254	-4.49%	3,108	3,254	-4.49%
Local	14	56	-75.00%	14	56	-75.00%
Total G.A.	3,122	3,310	-5.68	3,122	3,310	-5.68
Total Operations	10,400	16,379	-36.50	10,400	16,379	-36.50

**Austin-Bergstrom International Airport
Aviation Activity Report
Calendar Year 2021 vs 2020**

By Terminal

	1/2021	1/2020	Percent Change	1/2021 - 1/2021	1/2020 - 1/2020	Percent Change
<u>Barbara Jordan Terminal (BJT)</u>						
Passenger Activity						
Domestic Enplaned Revenue	186,572	575,807	-67.60%	186,572	575,807	-67.60%
Domestic Deplaned Revenue	196,606	595,321	-95.25%	196,606	595,321	-95.25%
International Enplaned Revenue	589	12,391	-93.12%	589	12,391	-93.12%
International Deplaned Revenue	961	13,958	-93.12%	961	13,958	-93.12%
Domestic Enplaned Non-Revenue	7,009	14,126	-50.38%	7,009	14,126	-50.38%
Domestic Deplaned Non-Revenue	6,858	12,918	-46.91%	6,858	12,918	-46.91%
International Enplaned Non-Revenue	12	124	-90.32%	12	124	-90.32%
International Deplaned Non-Revenue	9	104	-91.35%	9	104	-91.35%
Intl Enplaned Pre-Cleared Revenue	0	2,026	-100.00%	0	2,026	-100.00%
Intl Deplaned Pre-Cleared Revenue	0	1,886	-100.00%	0	1,886	-100.00%
Intl Enplaned Pre-Cleared Non-Revenue	0	39	-100.00%	0	39	-100.00%
Intl Deplaned Pre-Cleared Non-Revenue	0	45	-100.00%	0	45	-100.00%
Barbara Jordan Terminal Passenger Totals	398,616	1,228,745	-67.56	398,616	1,228,745	-67.56
<i>BJT Enplaned Passenger Totals</i>	<i>194,182</i>	<i>604,513</i>	<i>-67.88</i>	<i>194,182</i>	<i>604,513</i>	<i>-67.88</i>
<i>BJT Deplaned Passenger Totals</i>	<i>204,434</i>	<i>624,232</i>	<i>-67.25</i>	<i>204,434</i>	<i>624,232</i>	<i>-67.25</i>
<i>BJT Domestic Passenger Totals</i>	<i>397,045</i>	<i>1,198,172</i>	<i>-66.86</i>	<i>397,045</i>	<i>1,198,172</i>	<i>-66.86</i>
<i>BJT International Passenger Totals</i>	<i>1,571</i>	<i>30,573</i>	<i>-94.86</i>	<i>1,571</i>	<i>30,573</i>	<i>-94.86</i>
<u>South Terminal (ST)</u>						
Passenger Activity						
South Terminal Domestic Enplaned Revenue	7,569	23,804	-68.20%	7,569	23,804	-68.20%
South Terminal Domestic Deplaned Revenue	7,849	25,744	-69.51%	7,849	25,744	-69.51%
South Terminal Domestic Enplaned Non-Revenue	43	86	-50.00%	43	86	-50.00%
South Terminal Domestic Deplaned Non-Revenue	40	94	-57.45%	40	94	-57.45%
South Terminal Passenger Totals	15,501	49,728	-68.83	15,501	49,728	-68.83
<i>ST Enplaned Passenger Totals</i>	<i>7,612</i>	<i>23,890</i>	<i>-68.14</i>	<i>7,612</i>	<i>23,890</i>	<i>-68.14</i>
<i>ST Deplaned Passenger Totals</i>	<i>7,889</i>	<i>25,838</i>	<i>-69.47</i>	<i>7,889</i>	<i>25,838</i>	<i>-69.47</i>

**Austin-Bergstrom International Airport
Aviation Activity Report
Calendar Year 2021 vs 2020**

	1/2021	1/2020	Percent Change	1/2021 - 1/2021	1/2020 - 1/2020	Percent Change
<u>Total Cargo Activity</u>						
Mail						
Domestic Enplaned Mail	156,339	281,638	-44.49%	156,339	281,638	-44.49%
Domestic Deplaned Mail	480,148	809,745	-40.70%	480,148	809,745	-40.70%
International Enplaned Mail	0	0	0.00%	0	0	0.00%
International Deplaned Mail	0	0	0.00%	0	0	0.00%
South Terminal-Domestic Enplaned Mail	0	0	0.00%	0	0	0.00%
South Terminal-Domestic Deplaned Mail	0	0	0.00%	0	0	0.00%
Mail Totals	636,487	1,091,383	-41.68	636,487	1,091,383	-41.68
Cargo						
Domestic Enplaned Cargo	8,768,152	4,966,817	76.53%	8,768,152	4,966,817	76.53%
Domestic Deplaned Cargo	10,042,476	7,168,641	40.09%	10,042,476	7,168,641	40.09%
International Enplaned Cargo	22,102	245,172	-90.99%	22,102	245,172	-90.99%
International Deplaned Cargo	4,076	129,243	-96.85%	4,076	129,243	-96.85%
South Terminal-Domestic Enplaned Cargo	0	0	0.00%	0	0	0.00%
South Terminal-Domestic Deplaned Cargo	0	0	0.00%	0	0	0.00%
Cargo Totals	18,836,806	12,509,873	50.58	18,836,806	12,509,873	50.58
Belly Freight						
Domestic Enplaned Belly Freight	115,544	248,640	-53.53%	115,544	248,640	-53.53%
Domestic Deplaned Belly Freight	266,410	474,866	-43.90%	266,410	474,866	-43.90%
International Enplaned Belly Freight	0	293,349	-100.00%	0	293,349	-100.00%
International Deplaned Belly Freight	0	613,008	-100.00%	0	613,008	-100.00%
South Terminal-Domestic Enplaned Belly Frght	0	0	0.00%	0	0	0.00%
South Terminal-Domestic Deplaned Belly Frght	0	0	0.00%	0	0	0.00%
Belly Freight Totals	381,954	1,629,863	-76.57	381,954	1,629,863	-76.57
Cargo Totals (Mail, Cargo, Belly Freight)	19,855,247	15,231,119	30.36	19,855,247	15,231,119	30.36
<i>Enplaned Cargo Totals</i>	<i>9,062,137</i>	<i>6,035,616</i>	<i>50.14</i>	<i>9,062,137</i>	<i>6,035,616</i>	<i>50.14</i>
<i>Deplaned Cargo Totals</i>	<i>10,793,110</i>	<i>9,195,503</i>	<i>17.37</i>	<i>10,793,110</i>	<i>9,195,503</i>	<i>17.37</i>
<i>Domestic Cargo Totals</i>	<i>19,829,069</i>	<i>13,950,347</i>	<i>42.14</i>	<i>19,829,069</i>	<i>13,950,347</i>	<i>42.14</i>
<i>International Cargo Totals</i>	<i>26,178</i>	<i>1,280,772</i>	<i>-97.96</i>	<i>26,178</i>	<i>1,280,772</i>	<i>-97.96</i>

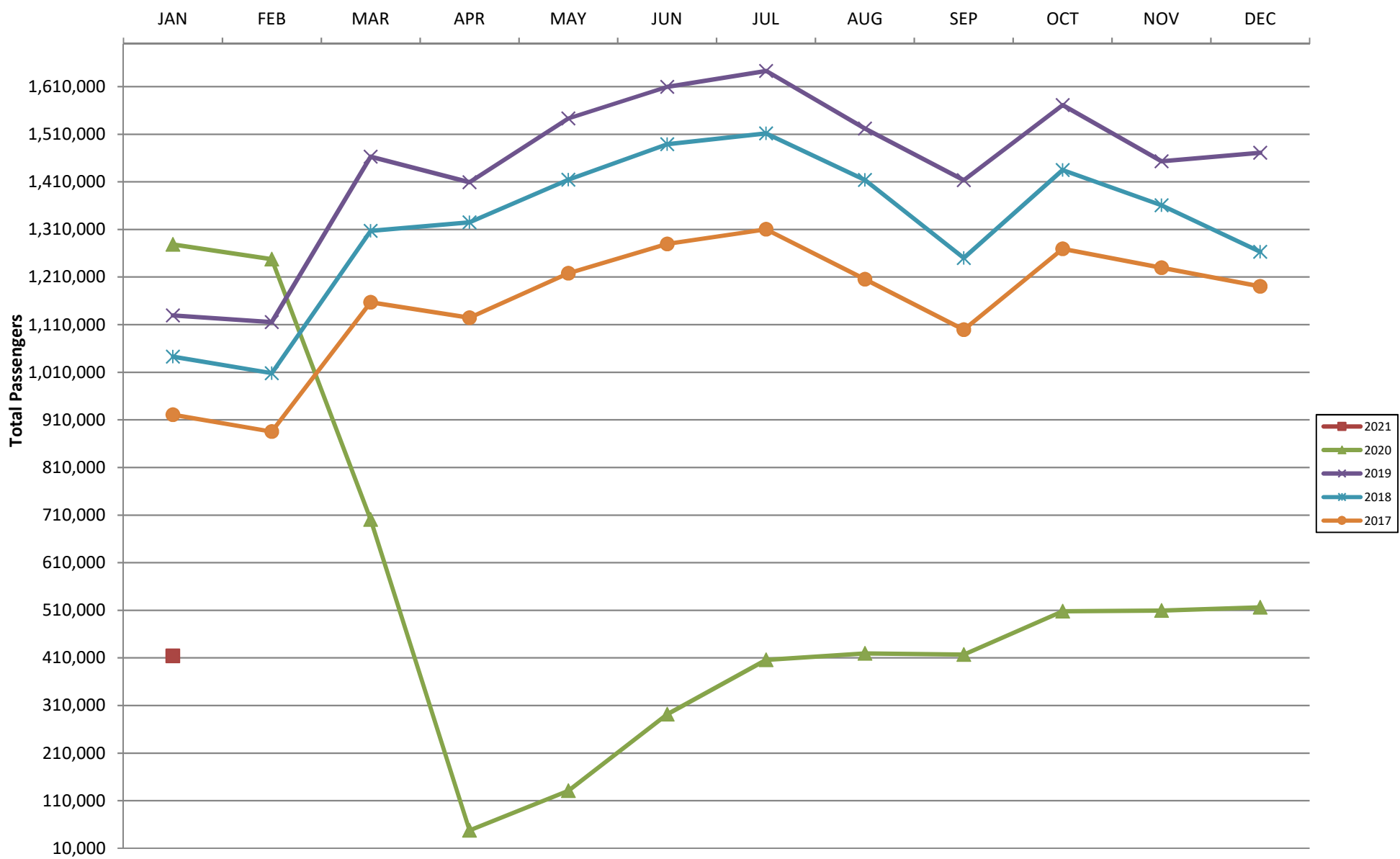
CURRENT CARGO RECORD = 40,215,518

RECORD SET = MARCH 2001

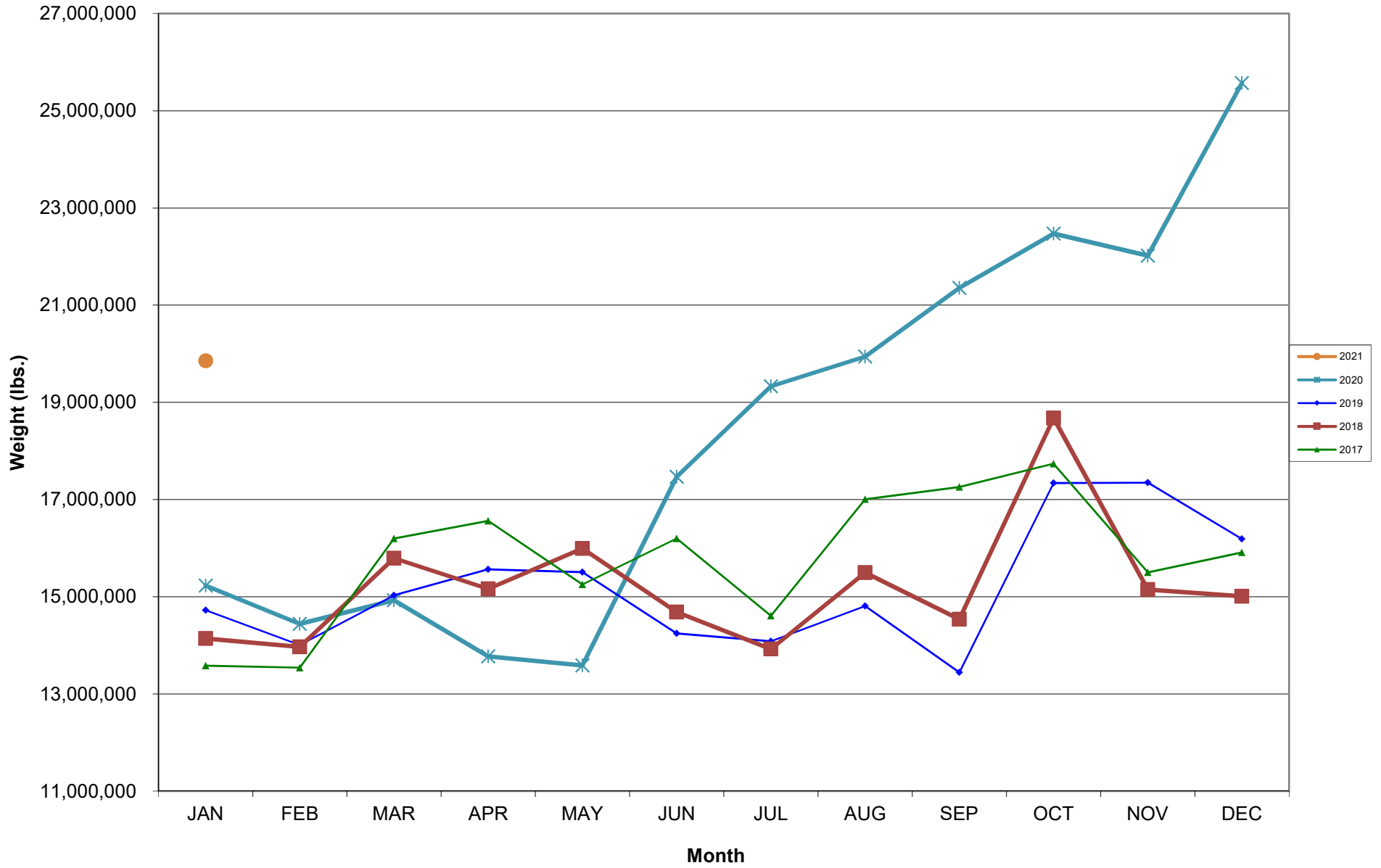
AUS – Airline Codes
January 2021

<u>Code</u>	<u>Carrier</u>
AS	Alaska Airlines, Inc.
G4	Allegiant Air, LLC
AA	American Airlines, Inc.
DL	Delta Air Lines
F9	Frontier Airlines, Inc.
B6	JetBlue Airways Corp.
WN	Southwest Airlines
NK	Spirit Airlines, Inc.
WQ	Swift Air, LLC
UA	United Airlines, Inc.

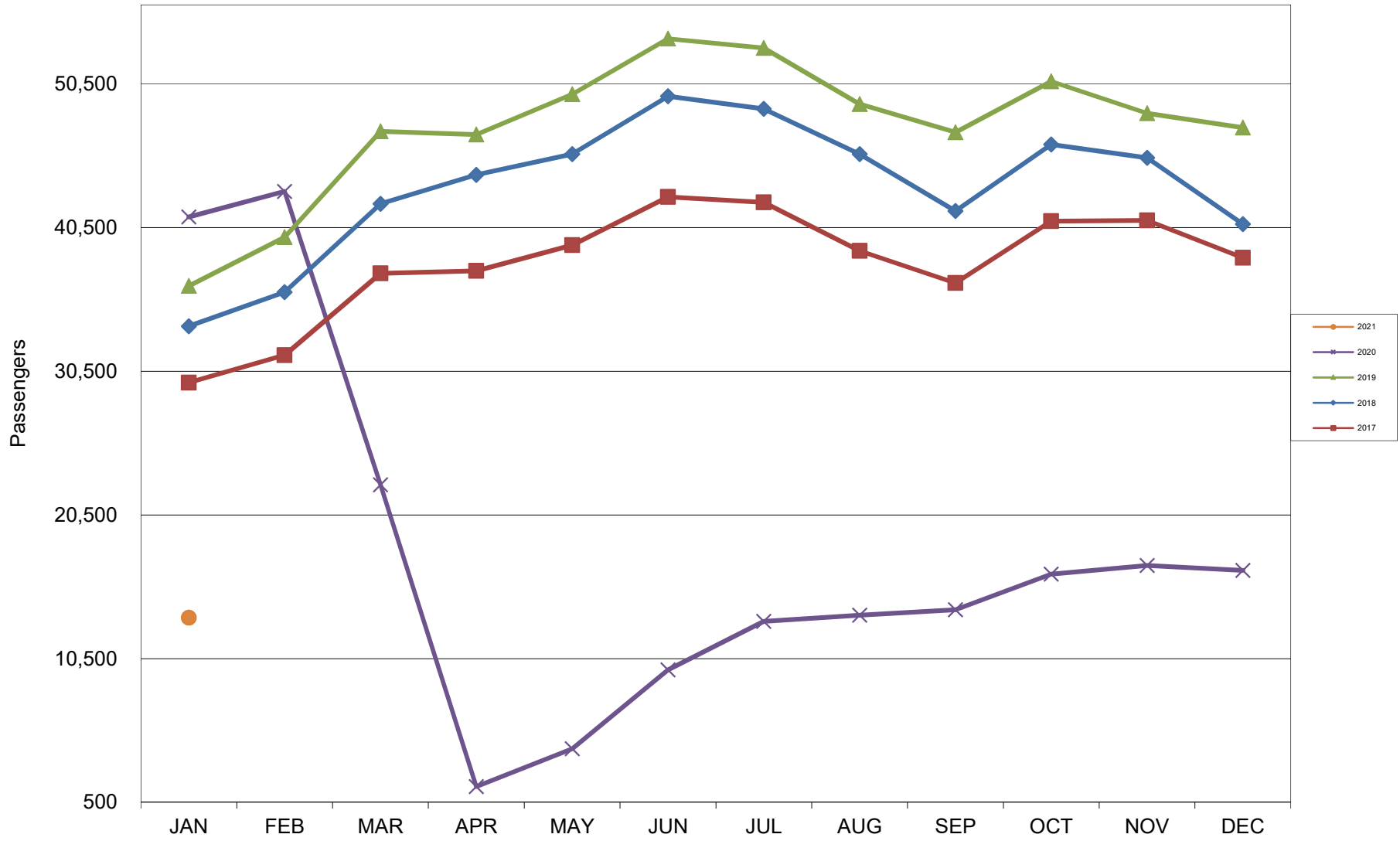
AUSTIN PASSENGER TRAFFIC 5 Year Trend



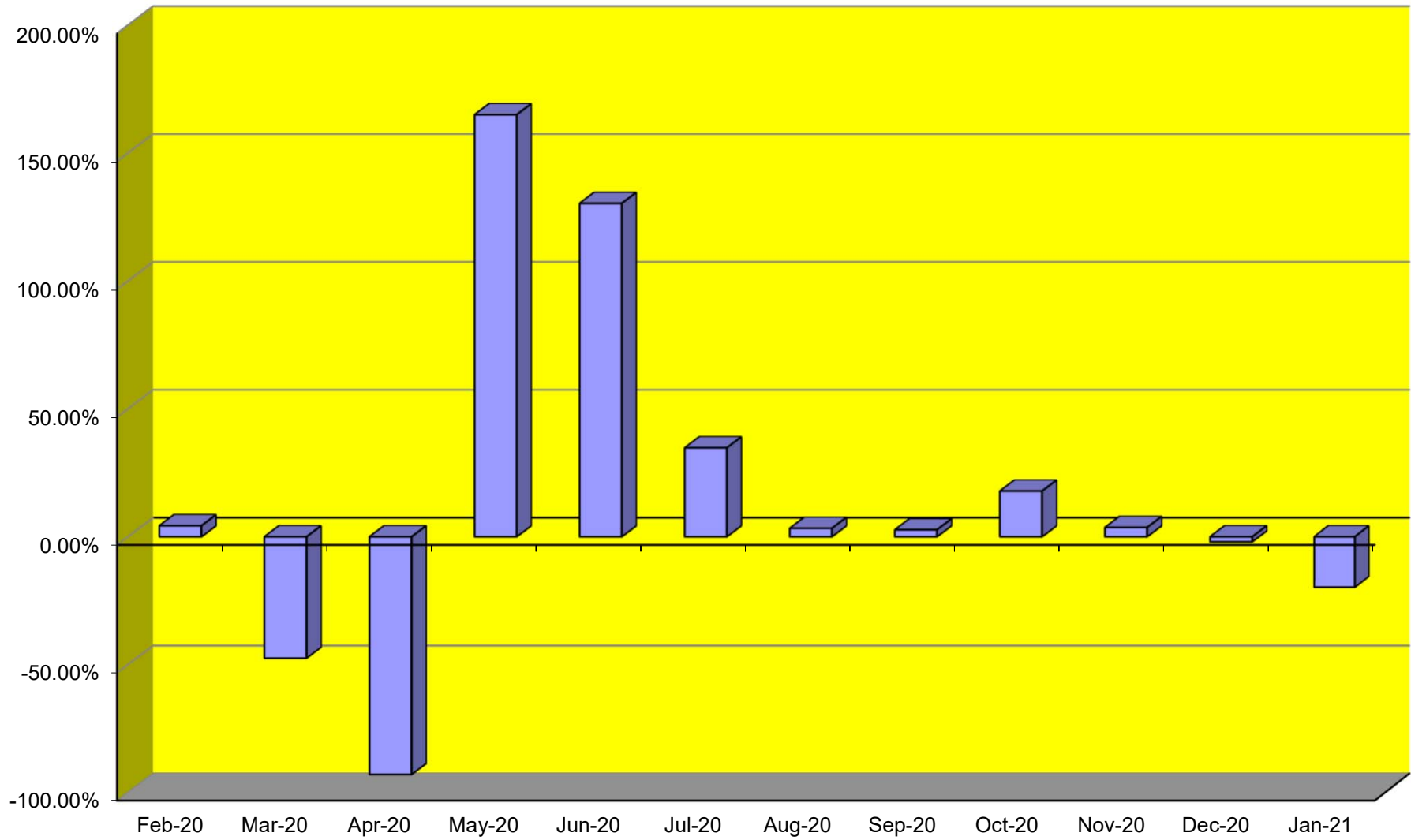
TOTAL CARGO POUNDAGE - AUSTIN, TEXAS



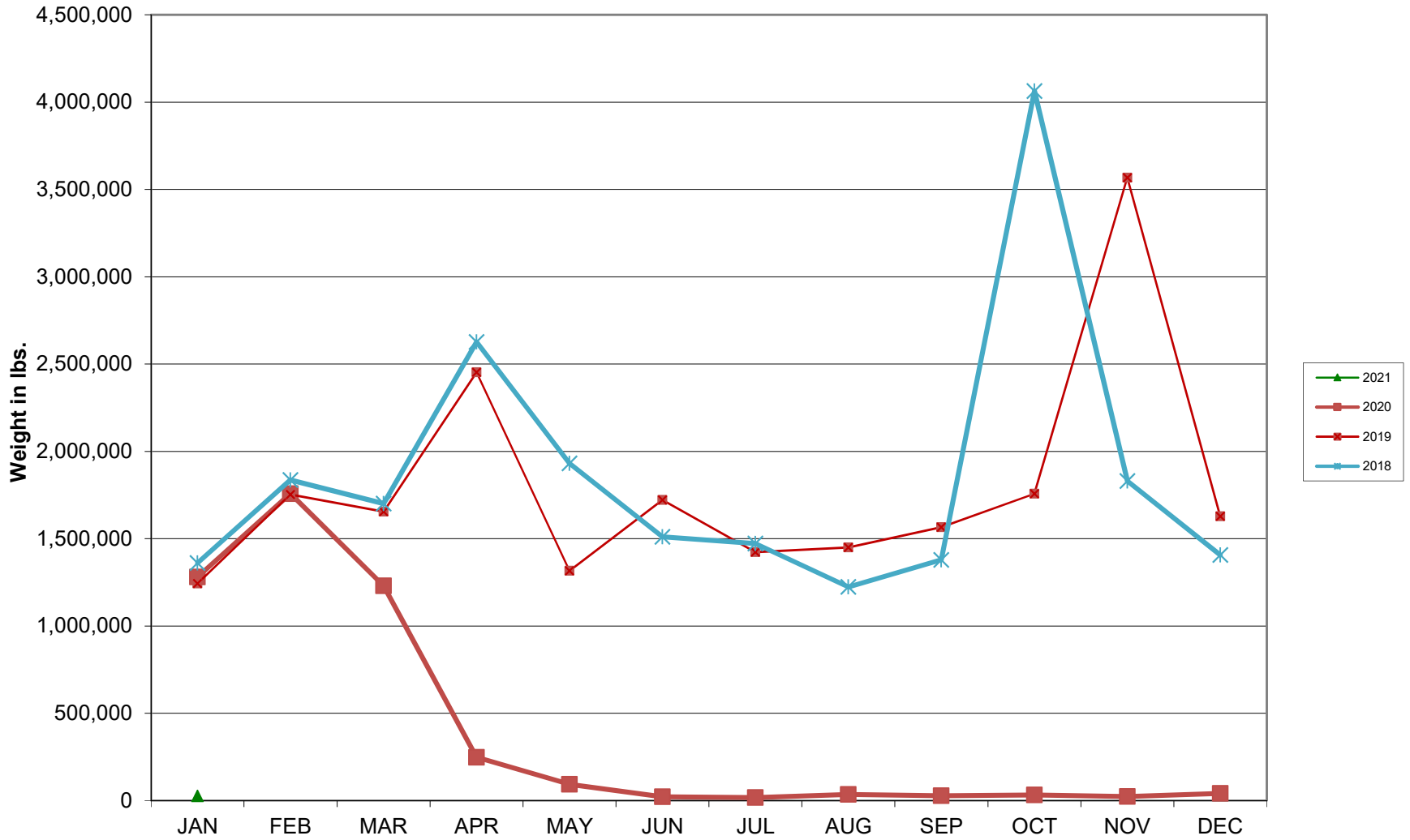
Average Daily Passengers



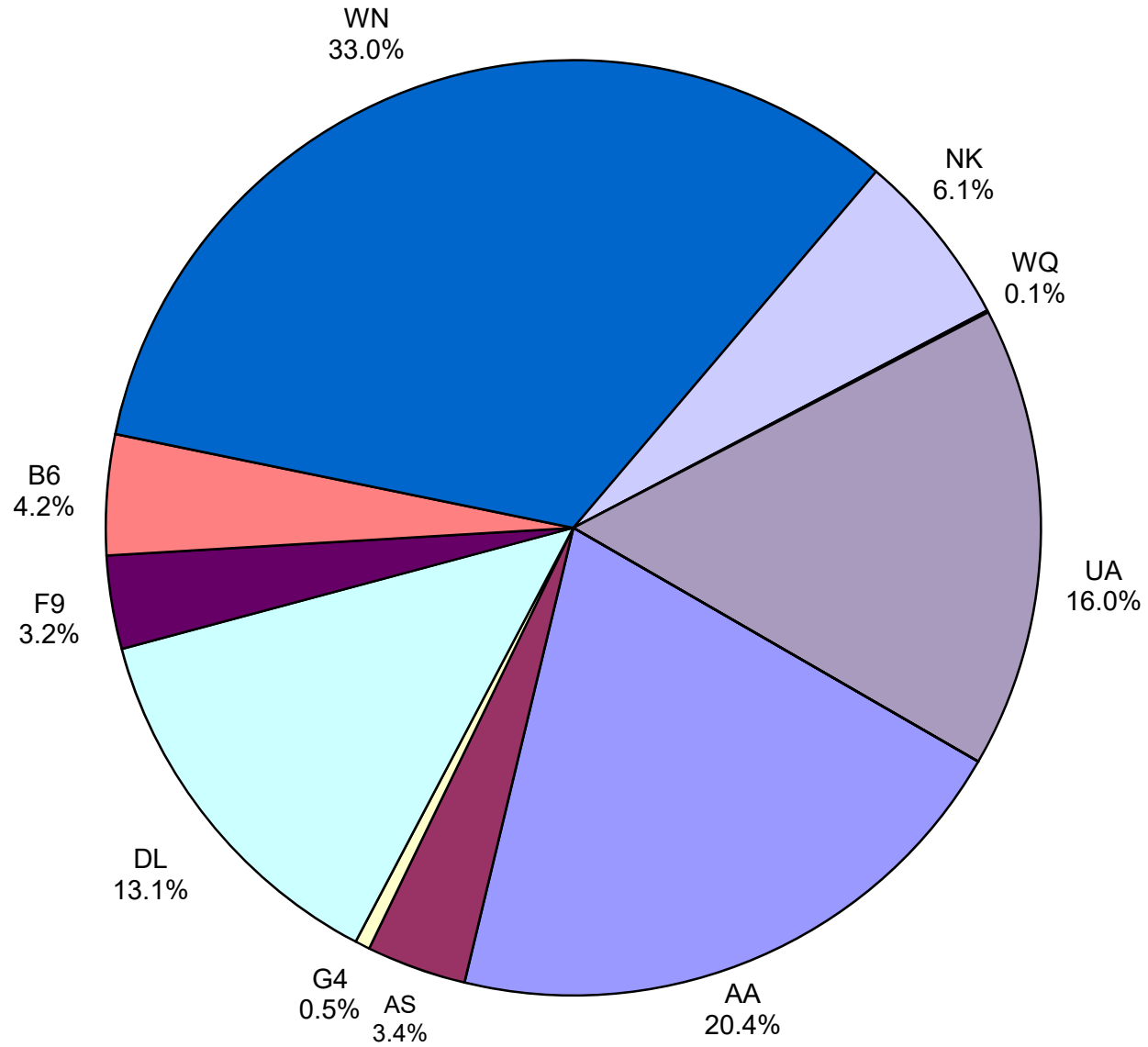
Monthly % Change in Average Daily Passengers



HISTORY OF INTERNATIONAL AIR CARGO



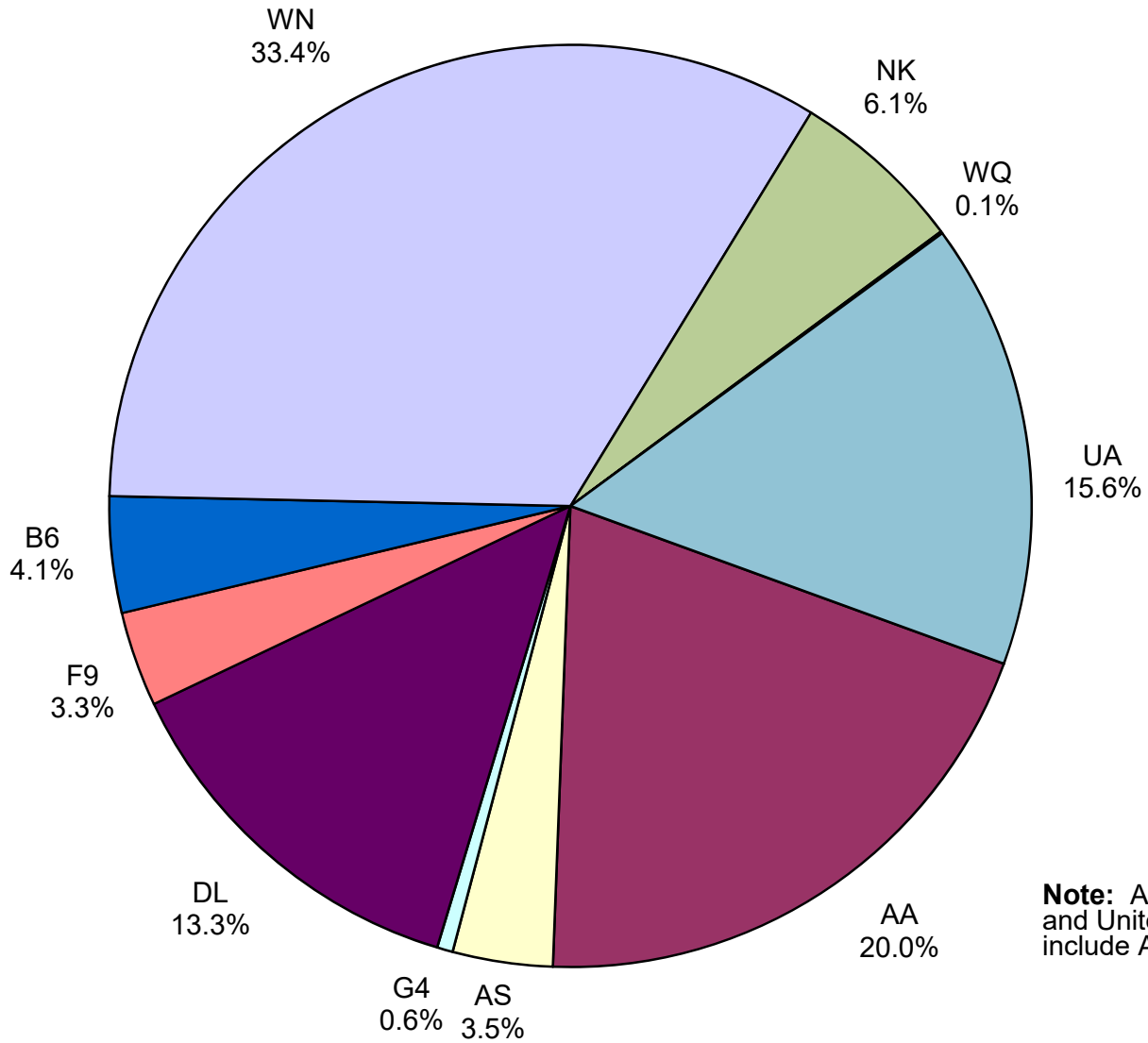
Total Passengers January 2021



Other:

Note: American, Delta and United Airlines percentages include Affiliates.

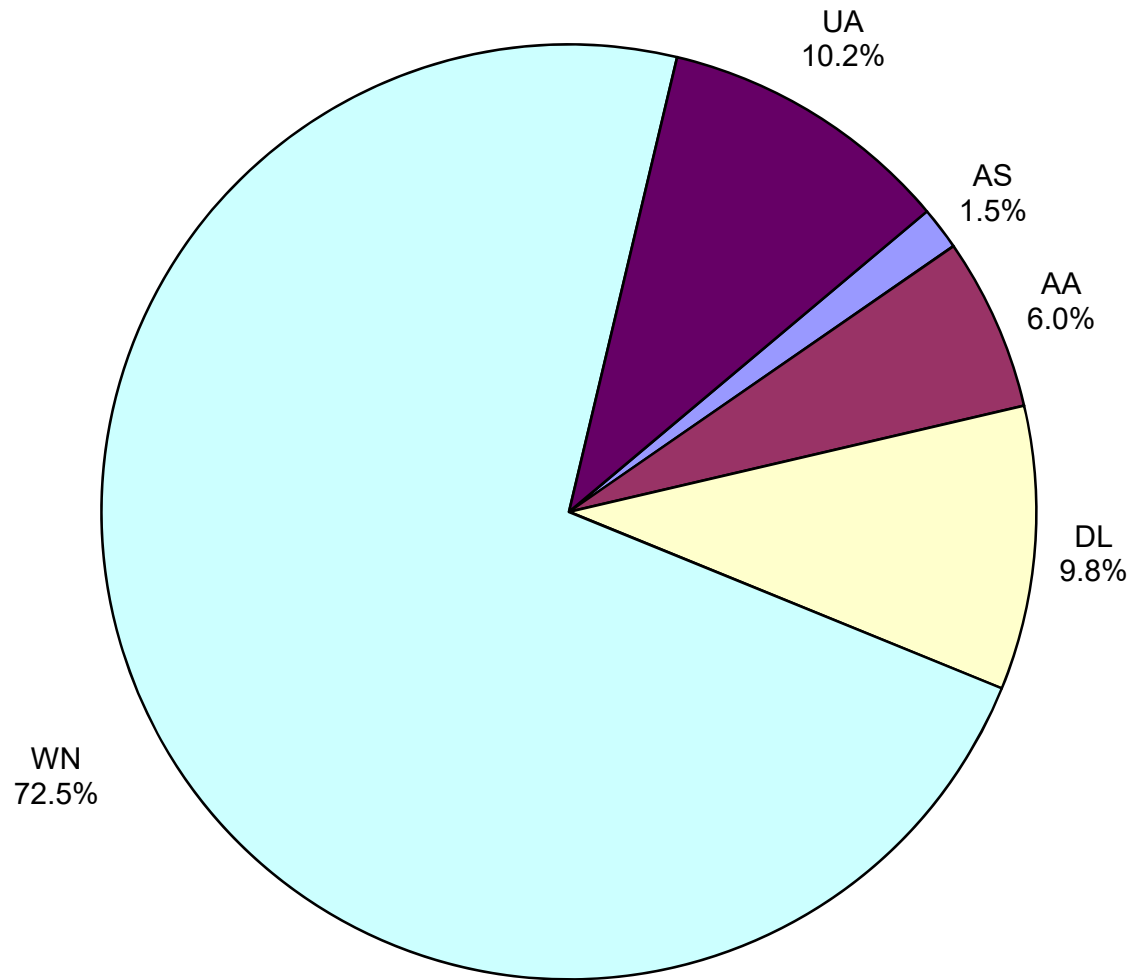
**All Passenger Carriers
Enplaned Revenue Passengers
January 2021**



Other:

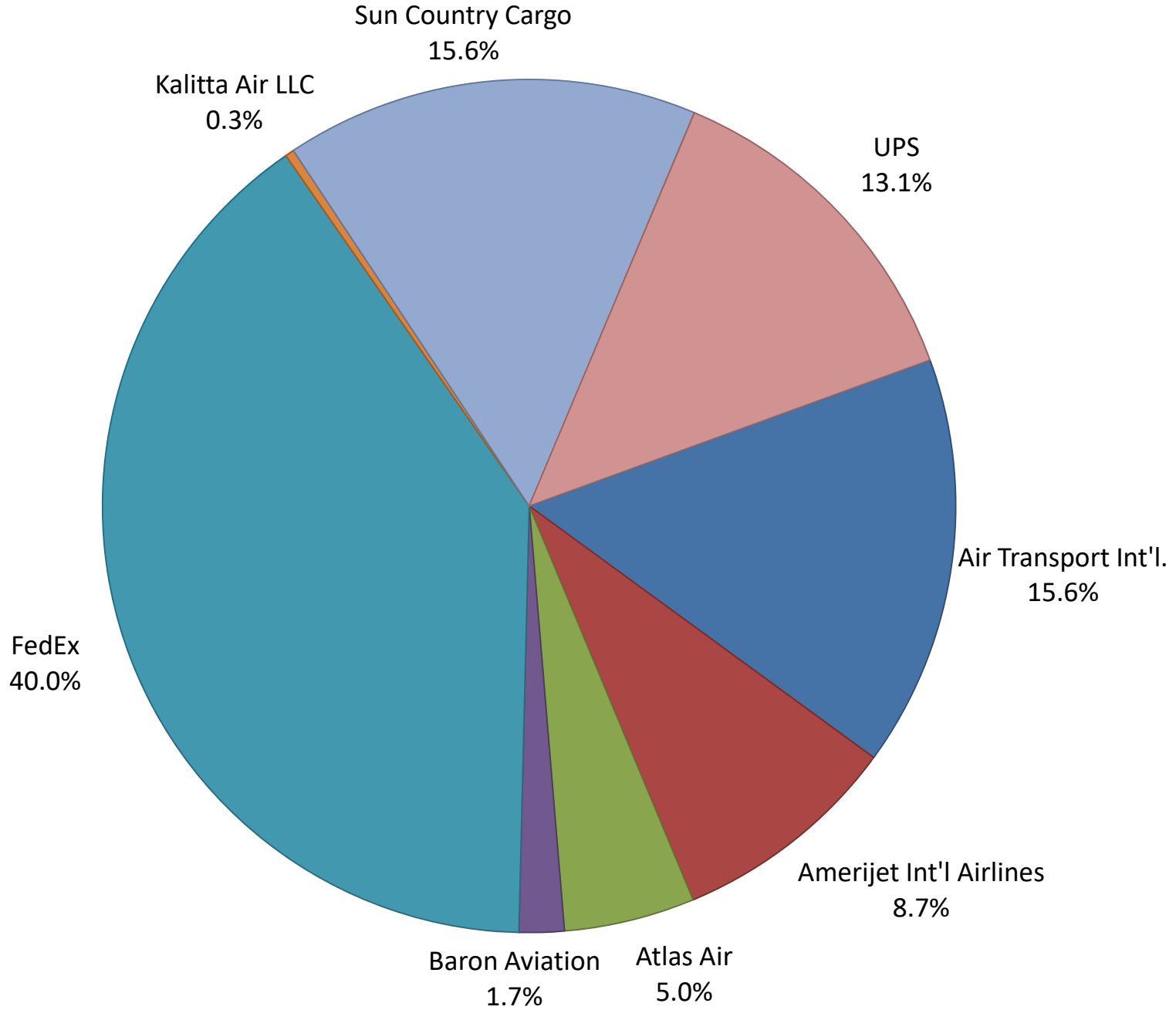
Note: American/US Airways, Delta and United Airlines percentages include Affiliates.

**AUS Belly Freight Market Shares
January 2021**

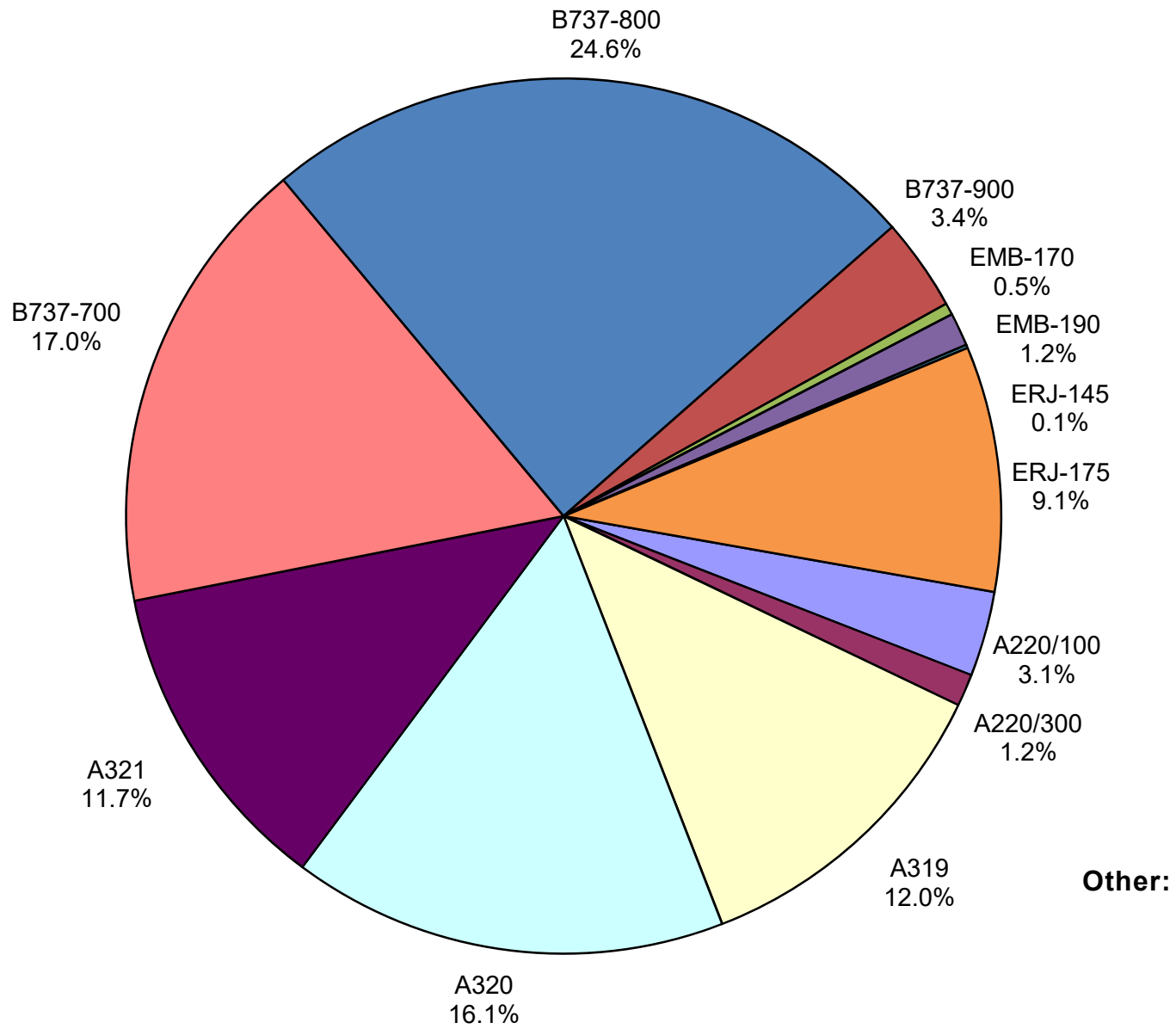


Other =

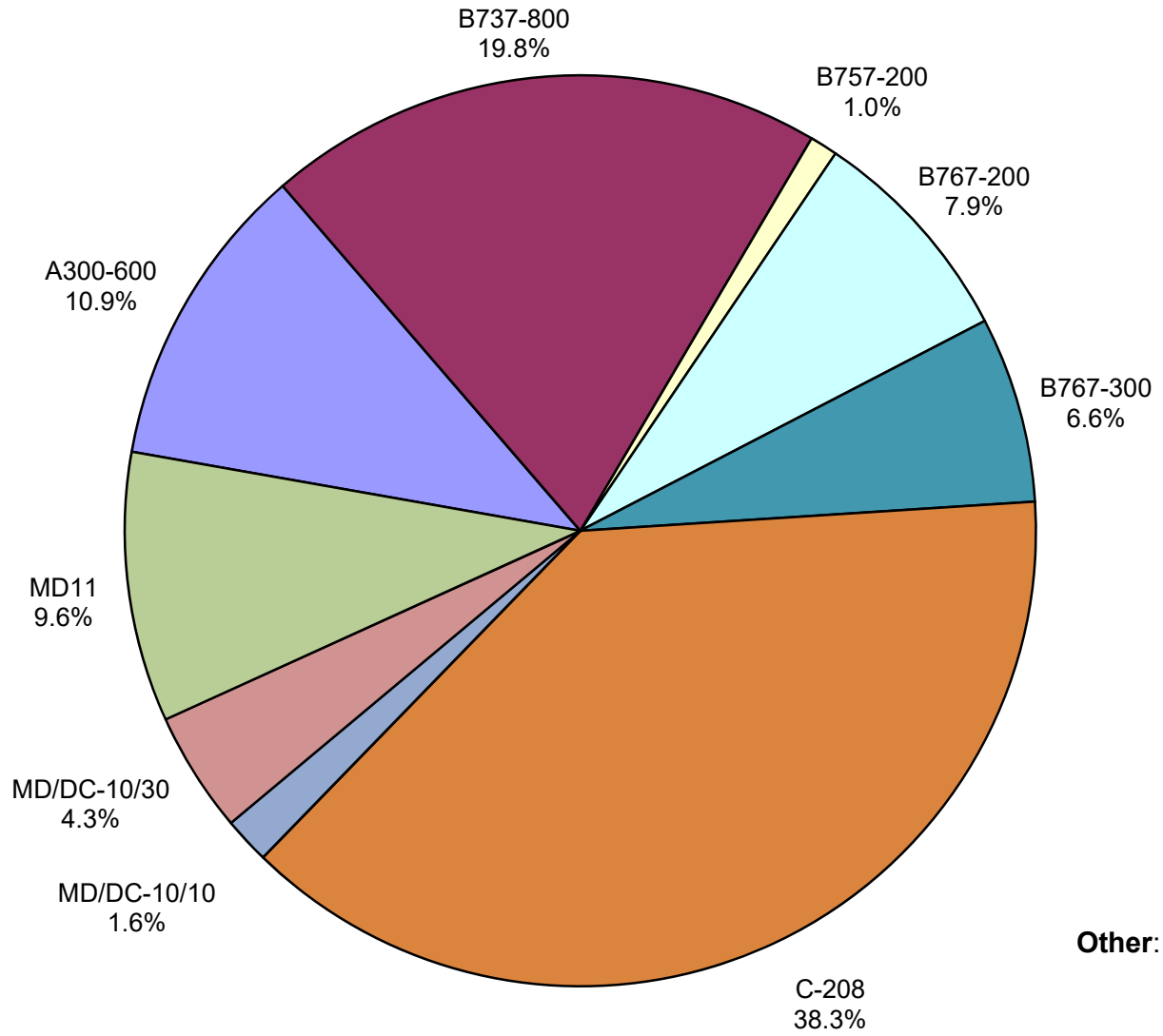
Air Cargo Market Share January 2021



**AUS Scheduled Passenger Aircraft Fleet Mix
January 2021**



**AUS Scheduled Cargo Aircraft Fleet Mix
January 2021**



Austin-Bergstrom International Airport

Pax Detail Report - January, 2021

Company	Period				YTD				2021 Share	2020 Share	Share Diff
	1/2021	1/2020	Difference	Change	YTD 2021	YTD 2020	Difference	Change			
Aerovias de Mexico S.A. de C.V. Pre Bankruptcy	0	4,145	-4,145	-100.0	0	4,145	-4,145	-100.0	0.0	0.3	-0.3
Air Canada	0	3,996	-3,996	-100.0	0	3,996	-3,996	-100.0	0.0	0.3	-0.3
Alaska Airlines INC	14,300	46,698	-32,398	-69.4	14,300	46,698	-32,398	-69.4	3.5	3.7	-0.2
Allegiant Air LLC	2,140	5,521	-3,381	-61.2	2,140	5,521	-3,381	-61.2	0.5	0.4	0.1
American Airlines INC	84,498	244,928	-160,430	-65.5	84,498	244,928	-160,430	-65.5	20.4	19.2	1.2
British Airways PLC	0	13,690	-13,690	-100.0	0	13,690	-13,690	-100.0	0.0	1.1	-1.1
Delta Air Lines	54,329	186,057	-131,728	-70.8	54,329	186,057	-131,728	-70.8	13.1	14.6	-1.5
Deutsche Lufthansa AG	0	7,564	-7,564	-100.0	0	7,564	-7,564	-100.0	0.0	0.6	-0.6
Frontier Airlines INC	13,361	44,207	-30,846	-69.8	13,361	44,207	-30,846	-69.8	3.2	3.5	-0.3
JetBlue Airways Corporation	17,228	47,235	-30,007	-63.5	17,228	47,235	-30,007	-63.5	4.2	3.7	0.5
Southwest Airlines	136,646	414,495	-277,849	-67.0	136,646	414,495	-277,849	-67.0	33.0	32.4	0.6
Spirit Airlines Inc	25,214	74,516	-49,302	-66.2	25,214	74,516	-49,302	-66.2	6.1	5.8	0.3
Sun Country Airlines/MN Airlines LLC	0	227	-227	-100.0	0	227	-227	-100.0	0.0	0.0	0.0
Swift Air LLC	297	745	-448	-60.1	297	745	-448	-60.1	0.1	0.1	0.0
United Airlines INC	66,104	184,449	-118,345	-64.2	66,104	184,449	-118,345	-64.2	16.0	14.4	1.6
Report Totals	414,117	1,278,473	-864,356	-67.6%	414,117	1,278,473	-864,356	-67.6%	100.1%	100.1%	

Statistics Included in Report

Domestic Passengers: Enplaned Revenue, Deplaned Revenue, Enplaned Non-Revenue, Deplaned Non-Revenue

International Passengers: Enplaned Revenue, Deplaned Revenue, Enplaned Non-Revenue, Deplaned Non-Revenue

International Pre-Cleared Passengers: Enplaned Revenue, Deplaned Revenue, Enplaned Non-Revenue, Deplaned Non-Revenue

South Terminal Domestic Passengers: Enplaned Revenue, Deplaned Revenue, Enplaned Non-Revenue, Deplaned Non-Revenue

Austin-Bergstrom International Airport

Summary Landings Report

Landing Type: Total

Month	2021		2020		2019		% Change 2021- 2020		% Change 2020- 2019	
	Count	Weight	Count	Weight	Count	Weight	Count	Weight	Count	Weight
January	2,839	399,216,719	5,762	812,175,948	5,348	733,746,679	-50.73%	-50.85%	7.74%	10.69%
February	0	0	5,382	764,833,023	5,040	692,708,930	-100.00%	-100.00%	6.79%	10.41%
March	0	0	5,278	742,099,772	5,964	825,483,911	-100.00%	-100.00%	-11.50%	-10.10%
April	0	0	1,884	264,508,162	5,899	815,621,798	-100.00%	-100.00%	-68.06%	-67.57%
May	0	0	1,608	223,266,578	6,294	881,747,150	-100.00%	-100.00%	-74.45%	-74.68%
June	0	0	2,119	293,669,395	6,322	890,410,020	-100.00%	-100.00%	-66.48%	-67.02%
July	0	0	3,401	458,639,882	6,551	915,103,306	-100.00%	-100.00%	-48.08%	-49.88%
August	0	0	3,390	473,872,571	6,447	906,499,773	-100.00%	-100.00%	-47.42%	-47.73%
September	0	0	2,791	378,925,681	6,020	848,899,951	-100.00%	-100.00%	-53.64%	-55.36%
October	0	0	2,972	409,225,230	6,459	916,700,076	-100.00%	-100.00%	-53.99%	-55.36%
November	0	0	3,157	438,563,290	5,924	836,527,780	-100.00%	-100.00%	-46.71%	-47.57%
December	0	0	3,126	431,926,302	6,078	848,973,148	-100.00%	-100.00%	-48.57%	-49.12%
Totals For Selected Period	2,839	399,216,719	5,762	812,175,948	5,348	733,746,679	-50.73%	-50.85%	7.74%	10.69%
Yearly Totals	2,839	399,216,719	40,870	5,691,705,834	72,346	10,112,422,522	-93.05%	-92.99%	-43.51%	-43.72%