

**Austin-Bergstrom International Airport
Aviation Activity Report
Calendar Year 2019 vs 2018**

Combined Terminals

	3/2019	3/2018	Percent Change	1/2019 - 3/2019	1/2018 - 3/2018	Percent Change
ABIA						
Total Passenger Activity						
Domestic Enplaned Revenue	660,487	594,917	11.02	1,672,305	1,541,020	8.52
Domestic Deplaned Revenue	670,329	620,153	8.09	1,699,405	1,583,393	7.33
International Enplaned Revenue	16,271	13,757	18.27	33,037	32,860	0.54
International Deplaned Revenue	17,440	14,748	18.25	36,447	36,248	0.55
Domestic Enplaned Non-Revenue	13,011	13,993	-7.02	39,835	39,478	0.90
Domestic Deplaned Non-Revenue	13,415	12,884	4.12	39,162	37,187	5.31
International Enplaned Non-Revenue	147	151	-2.65	352	376	-6.38
International Deplaned Non-Revenue	130	152	-14.47	307	270	13.70
Intl Enplaned Pre-Cleared Revenue	2,622	1,967	33.30	6,679	4,924	35.64
Intl Deplaned Pre-Cleared Revenue	2,691	2,015	33.55	7,292	5,364	35.94
Intl Enplaned Pre-Cleared Non-Revenue	31	24	29.17	94	71	32.39
Intl Deplaned Pre-Cleared Non-Revenue	37	34	8.82	106	72	47.22
South Terminal Domestic Enplaned Revenue	32,172	15,779	103.89	84,434	37,575	124.71
South Terminal Domestic Deplaned Revenue	33,992	16,208	109.72	87,828	38,811	126.30
South Terminal Domestic Enplaned Non-Revenue	109	3	3,533.33	304	12	2,433.33
South Terminal Domestic Deplaned Non-Revenue	132	3	4,300.00	362	13	2,684.62
ABIA Passenger Totals	1,463,016	1,306,788	11.96	3,707,949	3,357,674	10.43
<i>ABIA Enplaned Passenger Totals</i>	<i>724,850</i>	<i>640,591</i>	<i>13.15</i>	<i>1,837,040</i>	<i>1,656,316</i>	<i>10.91</i>
<i>ABIA Deplaned Passenger Totals</i>	<i>738,166</i>	<i>666,197</i>	<i>10.80</i>	<i>1,870,909</i>	<i>1,701,358</i>	<i>9.97</i>
<i>ABIA Domestic Passenger Totals</i>	<i>1,423,647</i>	<i>1,273,940</i>	<i>11.75</i>	<i>3,623,635</i>	<i>3,277,489</i>	<i>10.56</i>
<i>ABIA International Passenger Totals</i>	<i>39,369</i>	<i>32,848</i>	<i>19.85</i>	<i>84,314</i>	<i>80,185</i>	<i>5.15</i>
CURRENT PASSENGER RECORD = 1,511,634 RECORD SET = JULY 2018						
Total Aircraft Operations						
Air Carrier	11,718	10,949	7.02	32,075	29,929	7.17
Commuter & Air Taxi	1,747	1,706	2.40	4,258	4,396	-3.14
Military	898	832	7.93	2,454	1,887	30.05
General Aviation						
Itinerant	3,703	4,352	-14.91	10,515	11,097	-5.24
Local	98	264	-62.88	220	429	-48.72
Total G.A.	3,801	4,616	-17.66	10,735	11,526	-6.86
Total Operations	18,164	18,103	0.34	49,522	47,738	3.74

**Austin-Bergstrom International Airport
Aviation Activity Report
Calendar Year 2019 vs 2018**

By Terminal

	3/2019	3/2018	Percent Change	1/2019 - 3/2019	1/2018 - 3/2018	Percent Change
<u>Barbara Jordan Terminal (BJT)</u>						
Passenger Activity						
Domestic Enplaned Revenue	660,487	594,917	11.02	1,672,305	1,541,020	8.52
Domestic Deplaned Revenue	670,329	620,153	8.09	1,699,405	1,583,393	7.33
International Enplaned Revenue	16,271	13,757	18.27	33,037	32,860	0.54
International Deplaned Revenue	17,440	14,748	18.25	36,447	36,248	0.55
Domestic Enplaned Non-Revenue	13,011	13,993	-7.02	39,835	39,478	0.90
Domestic Deplaned Non-Revenue	13,415	12,884	4.12	39,162	37,187	5.31
International Enplaned Non-Revenue	147	151	-2.65	352	376	-6.38
International Deplaned Non-Revenue	130	152	-14.47	307	270	13.70
Intl Enplaned Pre-Cleared Revenue	2,622	1,967	33.30	6,679	4,924	35.64
Intl Deplaned Pre-Cleared Revenue	2,691	2,015	33.55	7,292	5,364	35.94
Intl Enplaned Pre-Cleared Non-Revenue	31	24	29.17	94	71	32.39
Intl Deplaned Pre-Cleared Non-Revenue	37	34	8.82	106	72	47.22
Barbara Jordan Terminal Passenger Totals	1,396,611	1,274,795	9.56	3,535,021	3,281,263	7.73
<i>BJT Enplaned Passenger Totals</i>	<i>692,569</i>	<i>624,809</i>	<i>10.84</i>	<i>1,752,302</i>	<i>1,618,729</i>	<i>8.25</i>
<i>BJT Deplaned Passenger Totals</i>	<i>704,042</i>	<i>649,986</i>	<i>8.32</i>	<i>1,782,719</i>	<i>1,662,534</i>	<i>7.23</i>
<i>BJT Domestic Passenger Totals</i>	<i>1,357,242</i>	<i>1,241,947</i>	<i>9.28</i>	<i>3,450,707</i>	<i>3,201,078</i>	<i>7.80</i>
<i>BJT International Passenger Totals</i>	<i>39,369</i>	<i>32,848</i>	<i>19.85</i>	<i>84,314</i>	<i>80,185</i>	<i>5.15</i>
<u>South Terminal (ST)</u>						
Passenger Activity						
South Terminal Domestic Enplaned Revenue	32,172	15,779	103.89	84,434	37,575	124.71
South Terminal Domestic Deplaned Revenue	33,992	16,208	109.72	87,828	38,811	126.30
South Terminal Domestic Enplaned Non-Revenue	109	3	3533.33	304	12	2433.33
South Terminal Domestic Deplaned Non-Revenue	132	3	4300.00	362	13	2684.62
South Terminal Passenger Totals	66,405	31,993	107.56	172,928	76,411	126.31
<i>ST Enplaned Passenger Totals</i>	<i>32,281</i>	<i>15,782</i>	<i>104.54</i>	<i>84,738</i>	<i>37,587</i>	<i>125.44</i>
<i>ST Deplaned Passenger Totals</i>	<i>34,124</i>	<i>16,211</i>	<i>110.50</i>	<i>88,190</i>	<i>38,824</i>	<i>127.15</i>

**Austin-Bergstrom International Airport
Aviation Activity Report
Calendar Year 2019 vs 2018**

	3/2019	3/2018	Percent Change	1/2019 - 3/2019	1/2018 - 3/2018	Percent Change
<u>Total Cargo Activity</u>						
Mail						
Domestic Enplaned Mail	176,982	198,668	-10.92	593,617	514,465	15.39
Domestic Deplaned Mail	696,160	387,955	79.44	2,010,312	1,169,034	71.96
International Enplaned Mail	0	0	0.00	0	0	0.00
International Deplaned Mail	0	0	0.00	110,830	0	0.00
South Terminal-Domestic Enplaned Mail	0	0	0.00	0	0	0.00
South Terminal-Domestic Deplaned Mail	0	0	0.00	0	0	0.00
Mail Totals	873,142	586,623	48.84	2,714,759	1,683,499	61.26
Cargo						
Domestic Enplaned Cargo	5,840,367	5,485,713	6.47	15,062,044	14,780,985	1.90
Domestic Deplaned Cargo	5,897,233	7,440,235	-20.74	19,127,272	20,651,935	-7.38
International Enplaned Cargo	304,442	489,217	-37.77	746,689	1,634,154	-54.31
International Deplaned Cargo	189,154	233,705	-19.06	450,047	570,402	-21.10
South Terminal-Domestic Enplaned Cargo	0	0	0.00	0	0	0.00
South Terminal-Domestic Deplaned Cargo	0	0	0.00	0	0	0.00
Cargo Totals	12,231,196	13,648,870	-10.39	35,386,052	37,637,476	-5.98
Belly Freight						
Domestic Enplaned Belly Freight	293,199	186,032	57.61	887,164	699,988	26.74
Domestic Deplaned Belly Freight	471,519	392,994	19.98	1,429,523	1,189,223	20.21
International Enplaned Belly Freight	445,612	324,892	37.16	1,164,077	857,661	35.73
International Deplaned Belly Freight	715,873	652,476	9.72	2,179,811	1,834,140	18.85
South Terminal-Domestic Enplaned Belly Frght	0	0	0.00	0	0	0.00
South Terminal-Domestic Deplaned Belly Frght	0	0	0.00	0	0	0.00
Belly Freight Totals	1,926,203	1,556,394	23.76	5,660,575	4,581,012	23.57
Cargo Totals (Mail, Cargo, Belly Freight)	15,030,541	15,791,887	-4.82	43,761,386	43,901,987	-0.32
<i>Enplaned Cargo Totals</i>	<i>7,060,602</i>	<i>6,684,522</i>	<i>5.63</i>	<i>18,453,591</i>	<i>18,487,253</i>	<i>-0.18</i>
<i>Deplaned Cargo Totals</i>	<i>7,969,939</i>	<i>9,107,365</i>	<i>-12.49</i>	<i>25,307,795</i>	<i>25,414,734</i>	<i>-0.42</i>
<i>Domestic Cargo Totals</i>	<i>13,375,460</i>	<i>14,091,597</i>	<i>-5.08</i>	<i>39,109,932</i>	<i>39,005,630</i>	<i>0.27</i>
<i>International Cargo Totals</i>	<i>1,655,081</i>	<i>1,700,290</i>	<i>-2.66</i>	<i>4,651,454</i>	<i>4,896,357</i>	<i>-5.00</i>

CURRENT CARGO RECORD = 40,215,518

RECORD SET = MARCH 2001

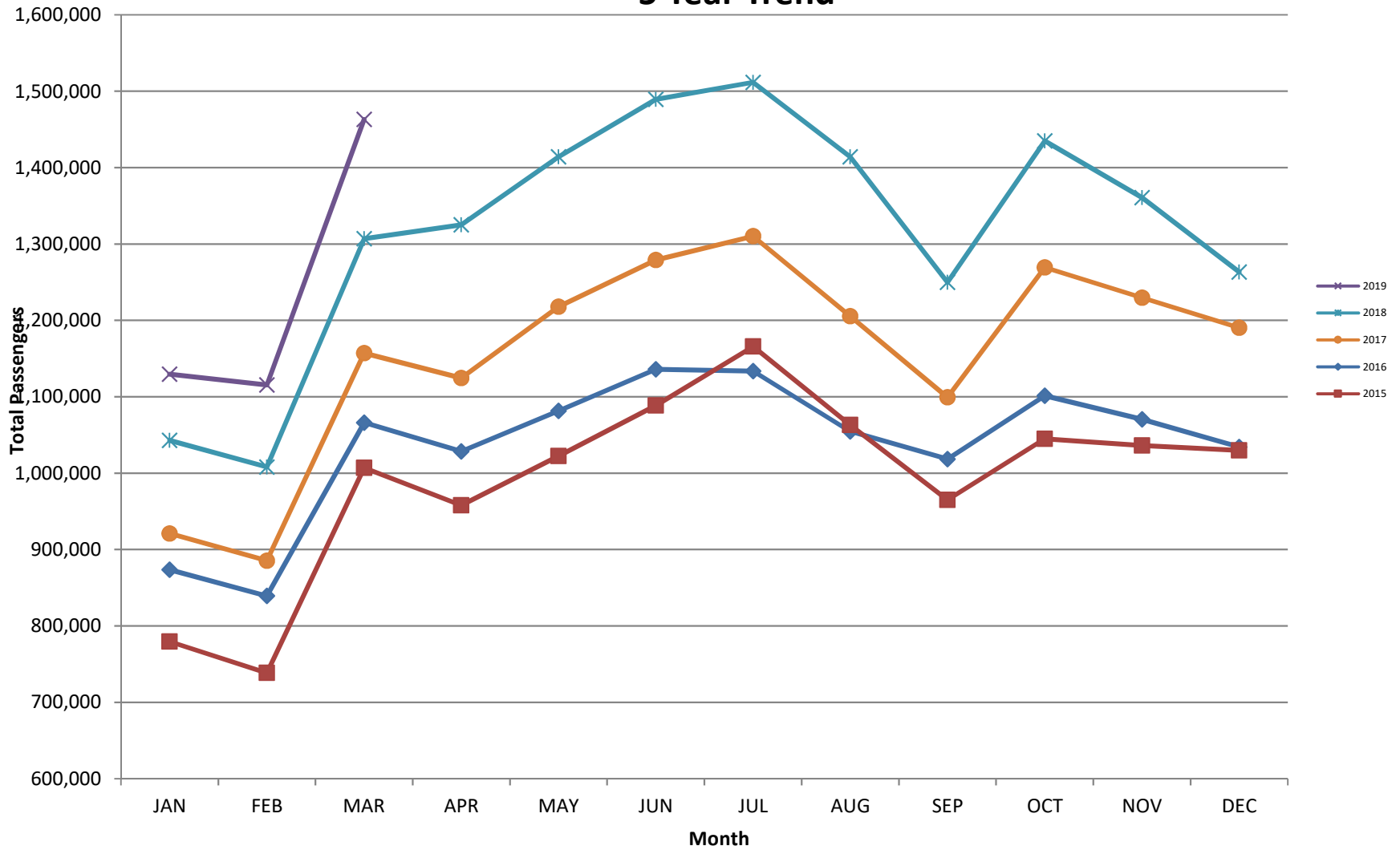
AUS – Airline Codes

March 2019

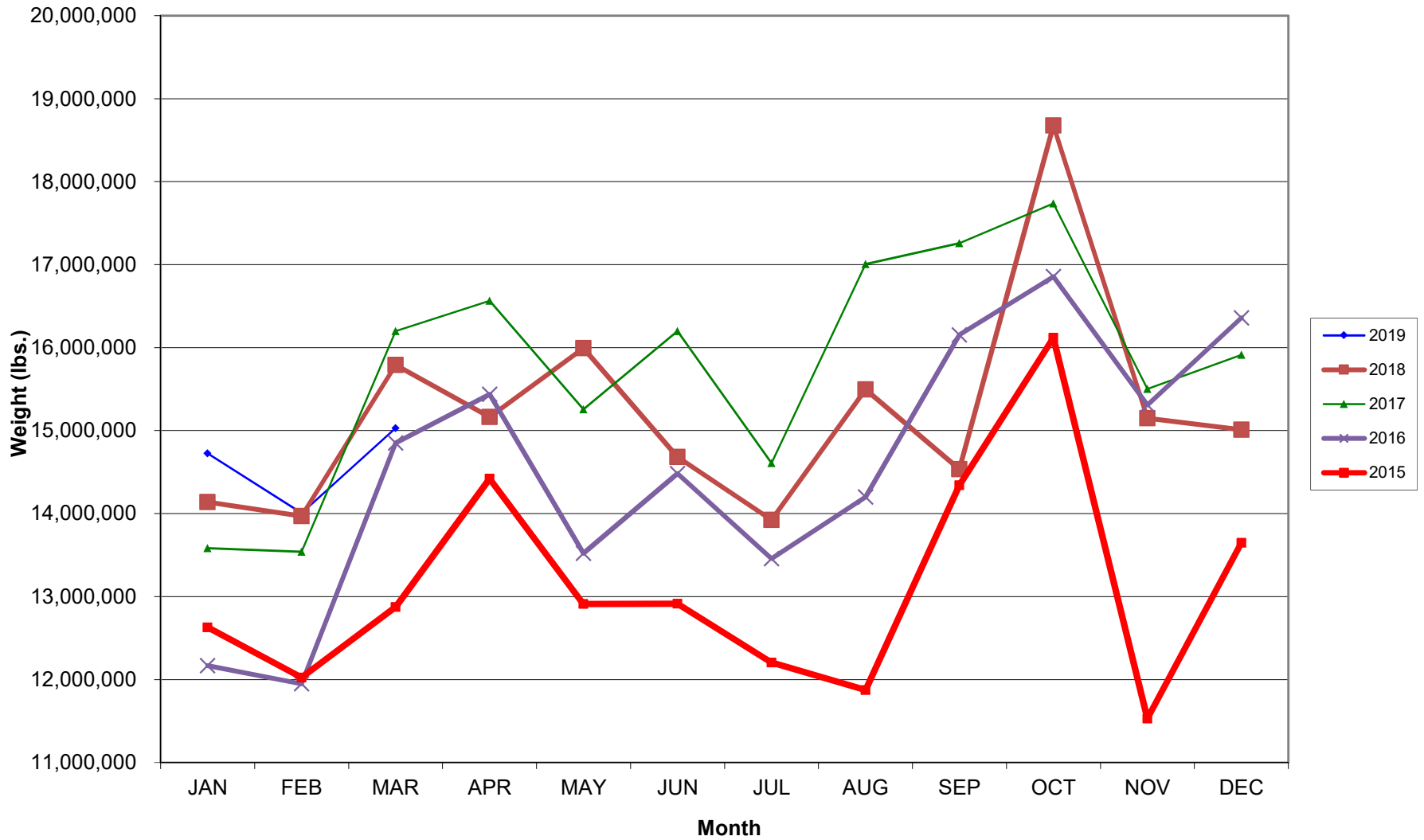
<u>Code</u>	<u>Carrier</u>
AM	Aerovias de Mexico S.A. de C.V. dba AeroMexico Airlines
AC	Air Canada
AS	Alaska Airlines, Inc.
G4	Allegiant Air, LLC
AA	American Airlines, Inc.
BA	British Airways Plc
DL	Delta Airlines
LH	Deutsche Lufthansa AG
F9	Frontier Airlines
B6	JetBlue Airways Corp.
LL	Miami Air International
DY	Norwegian Air UK LTD
SK	Scandinavian Airlines
WN	Southwest Airlines
NK	Spirit Airlines
SY	Sun Country Airlines
WQ	Swift Air
UA	United Airlines, Inc.
VC	VIA Airlines

AUSTIN PASSENGER TRAFFIC

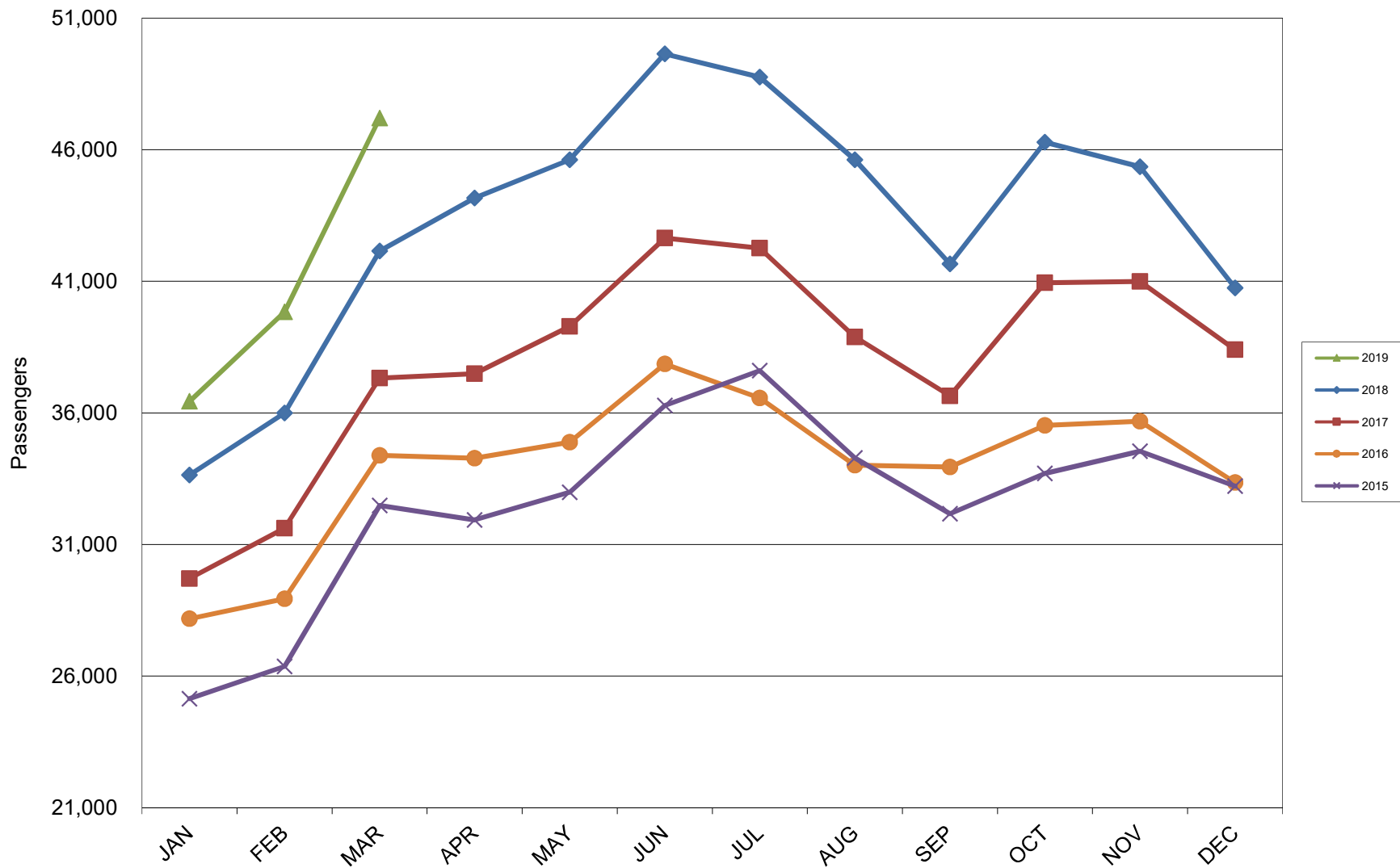
5 Year Trend



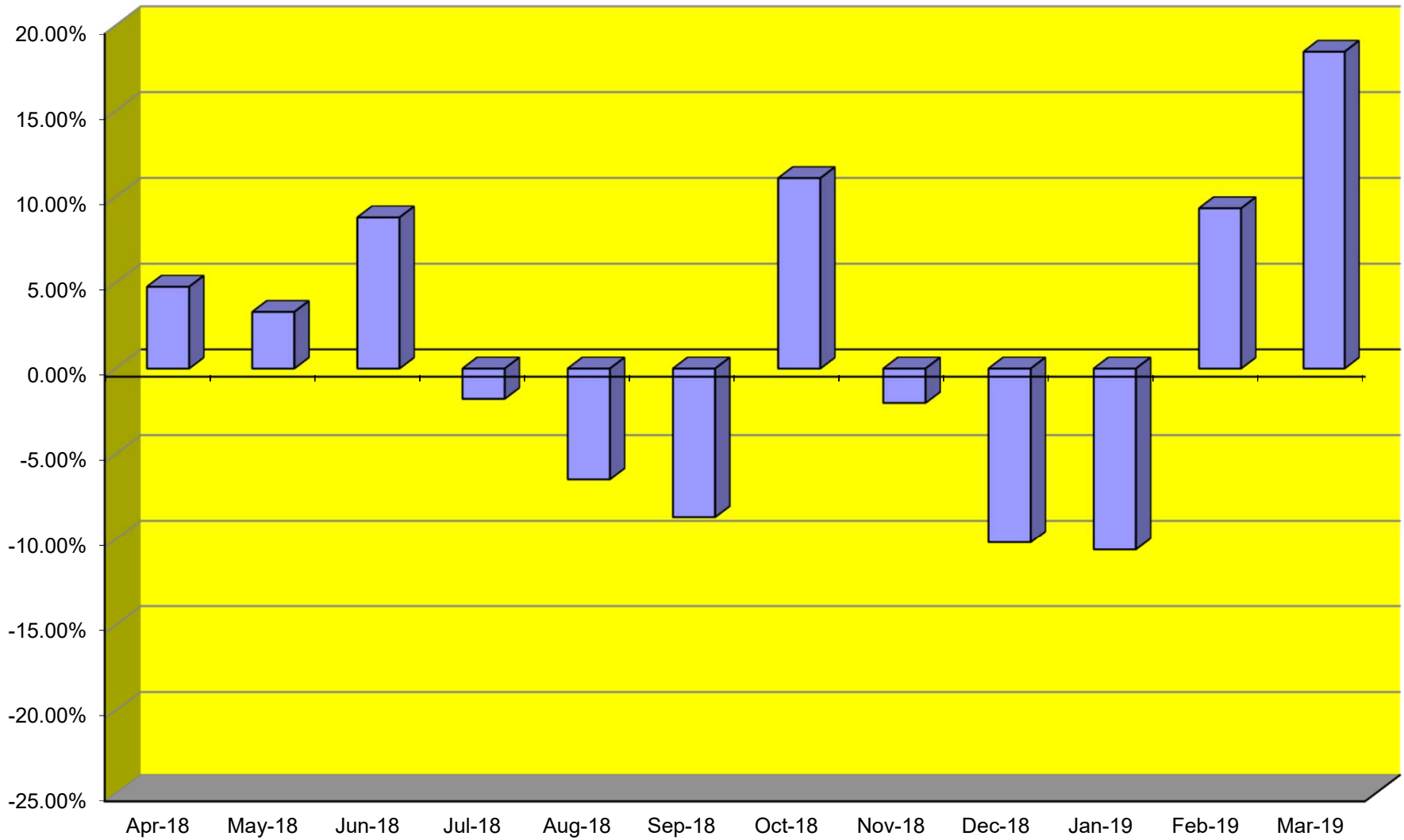
TOTAL CARGO POUNDAGE - AUSTIN, TEXAS



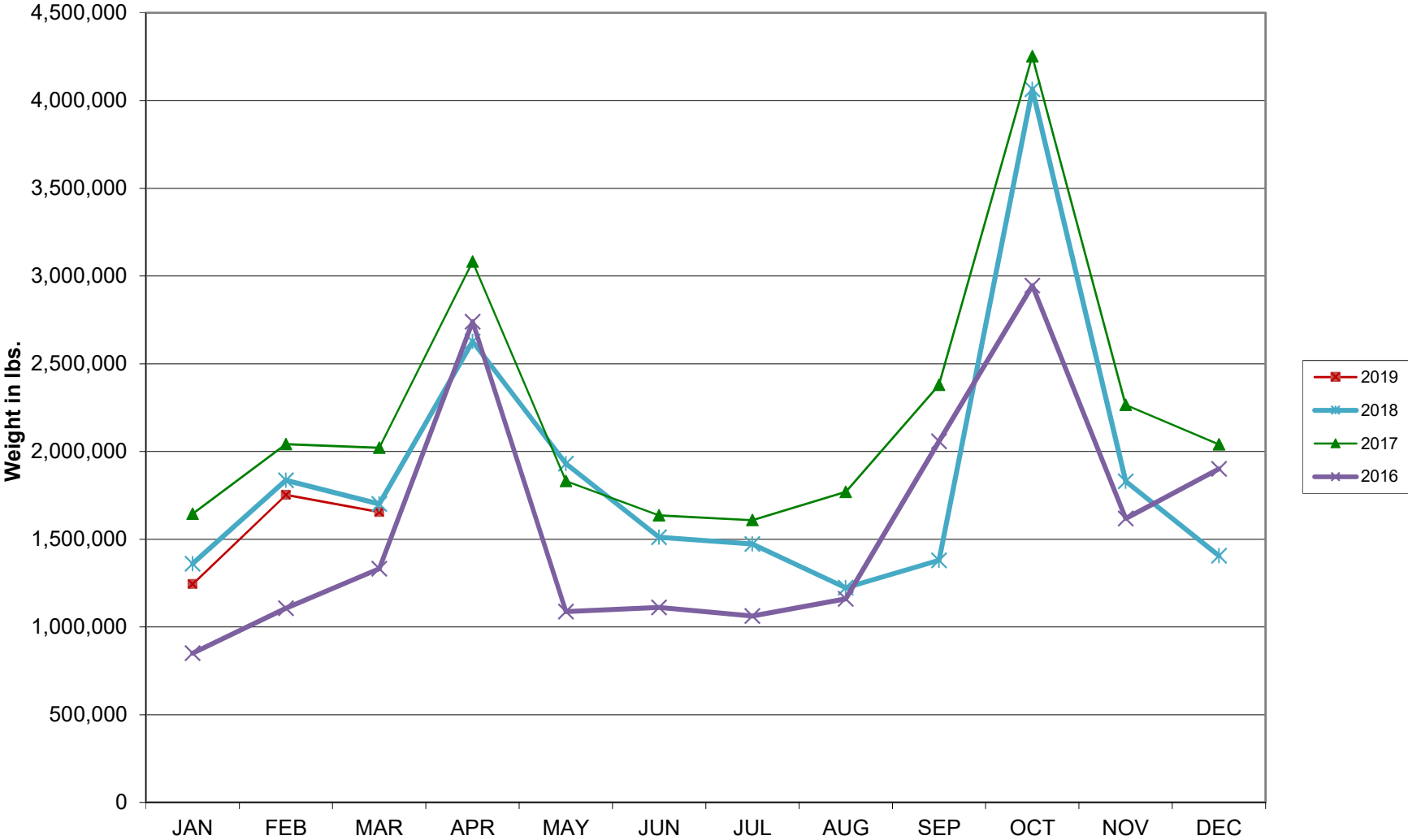
Average Daily Passengers



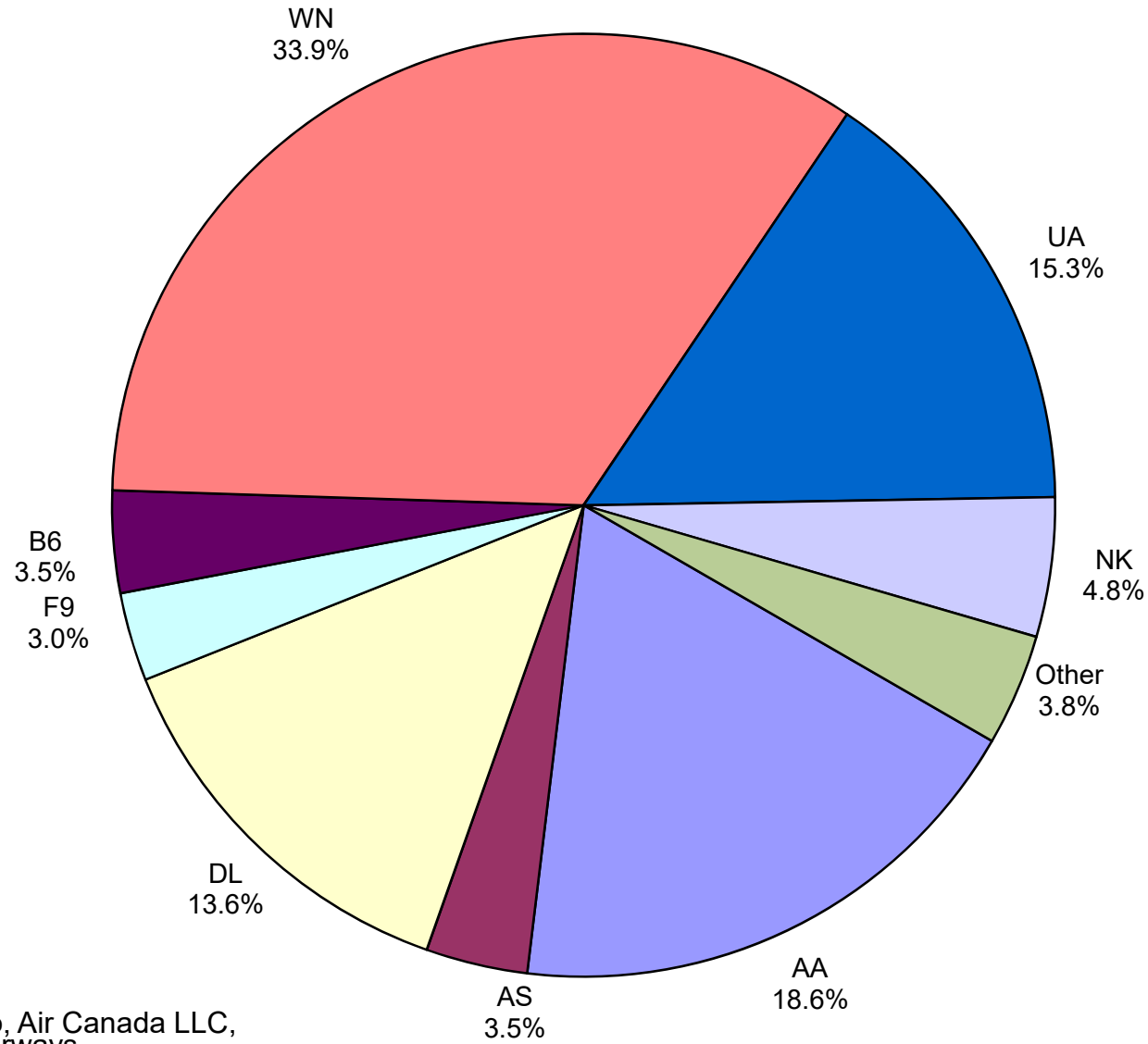
Monthly % Change in Average Daily Passengers



HISTORY OF INTERNATIONAL AIR CARGO



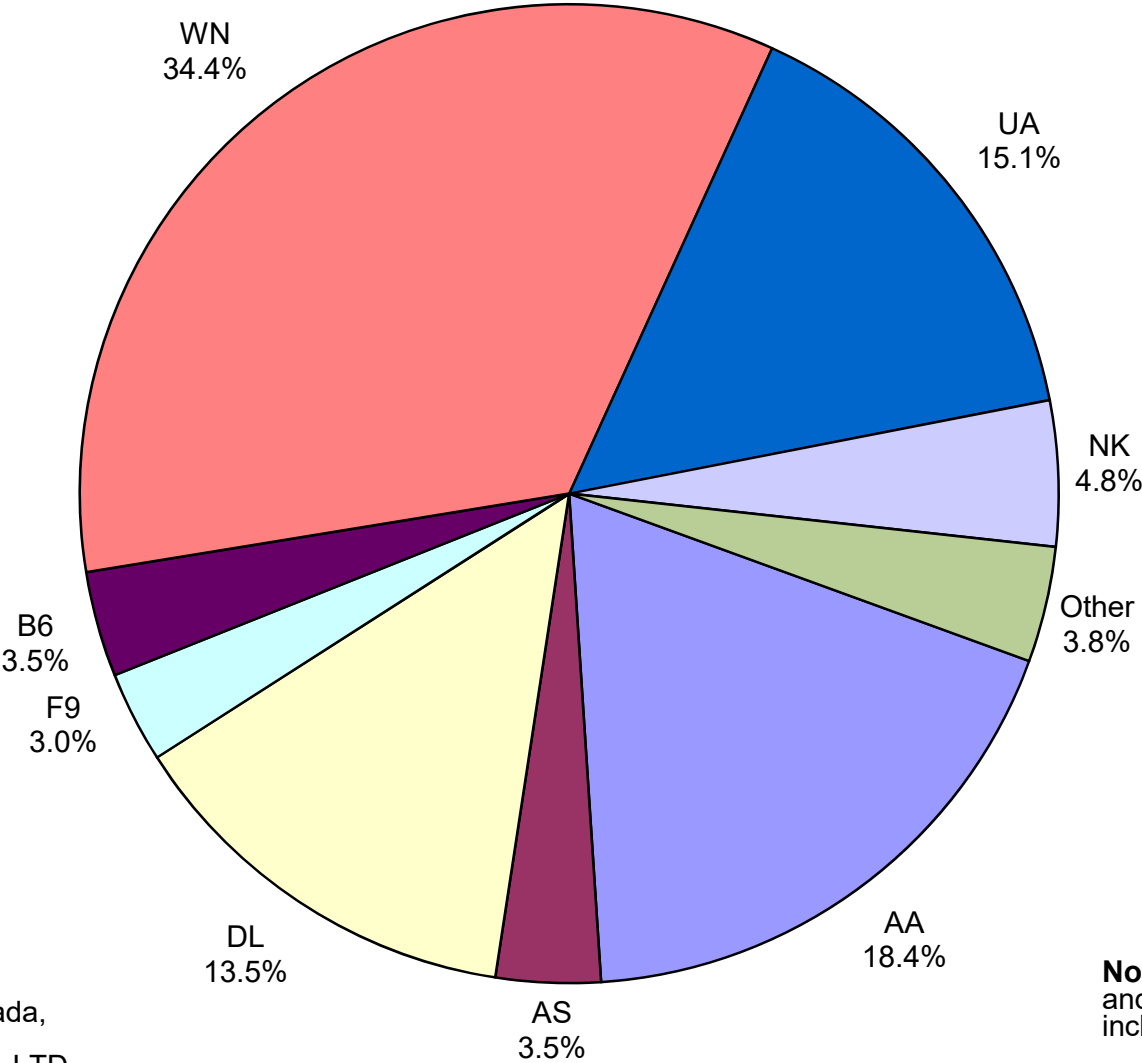
Total Passengers March 2019



Other: Aeromexico, Air Canada LLC, Allegiant Air, British Airways, Deutsche Lufthansa AG, Miami Air, Norwegian Air UK, LTD, Scandinavian Airlines, Sun Country, Swift Air and VIA Airlines

Note: American, Delta and United Airlines percentages include Affiliates.

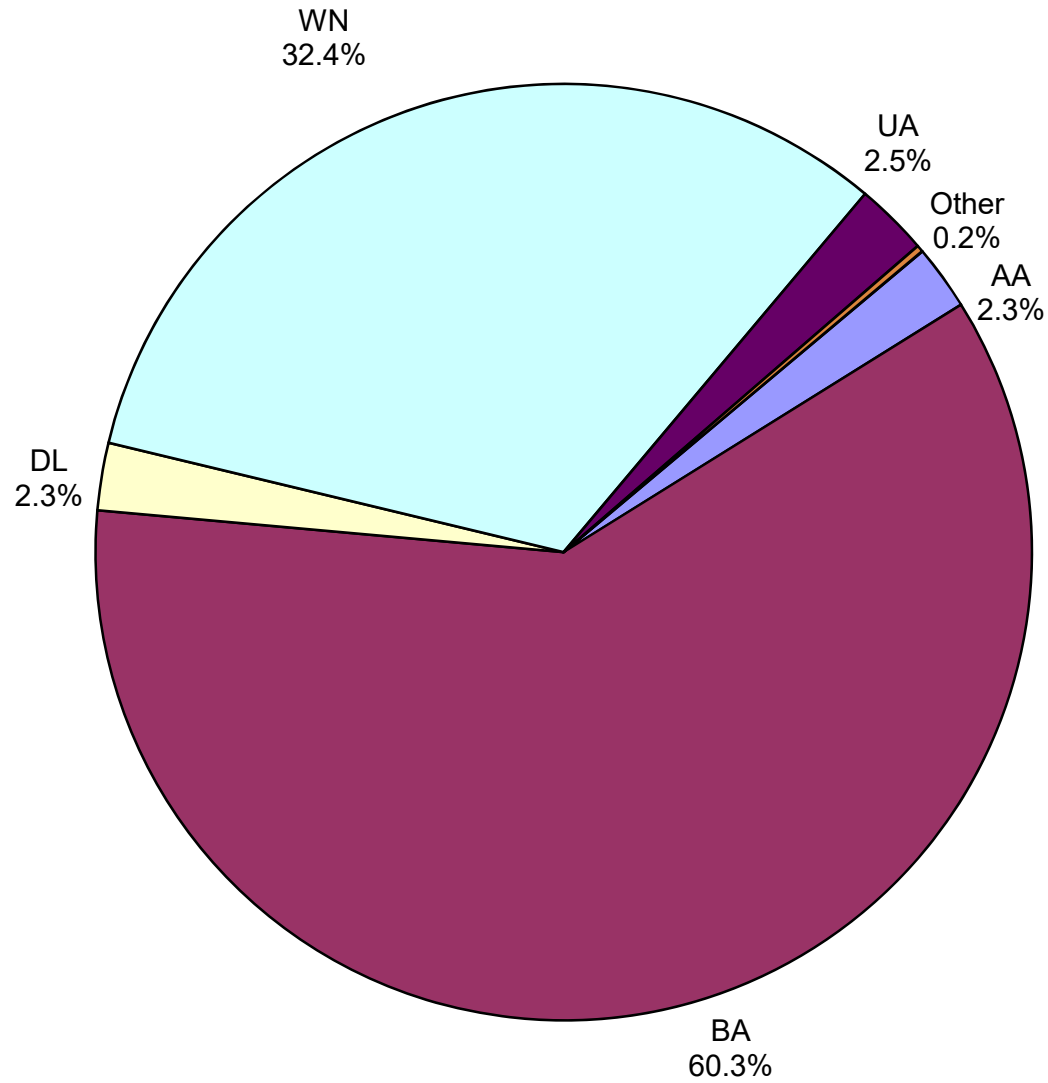
**All Passenger Carriers
Enplaned Revenue Passengers
March 2019**



Other: Aeromexico, Air Canada, Allegiant Air, British Airways, Miami Air, Norwegian Air UK, LTD., Scandinavian Airlines, Sun Country Airlines, Swift Air and VIA Airlines

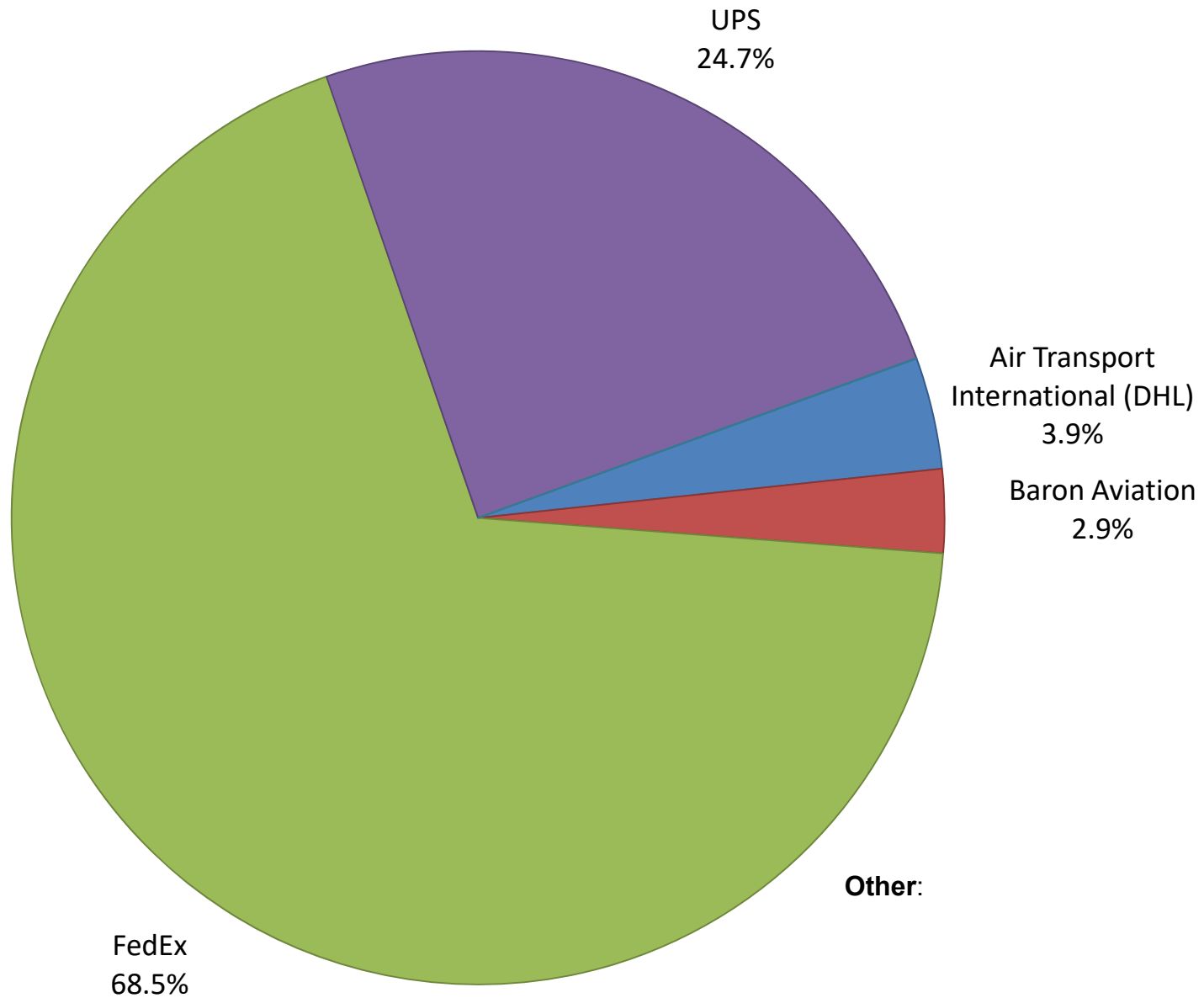
Note: American/US Airways, Delta and United Airlines percentages include Affiliates.

**AUS Belly Freight Market Shares
March 2019**

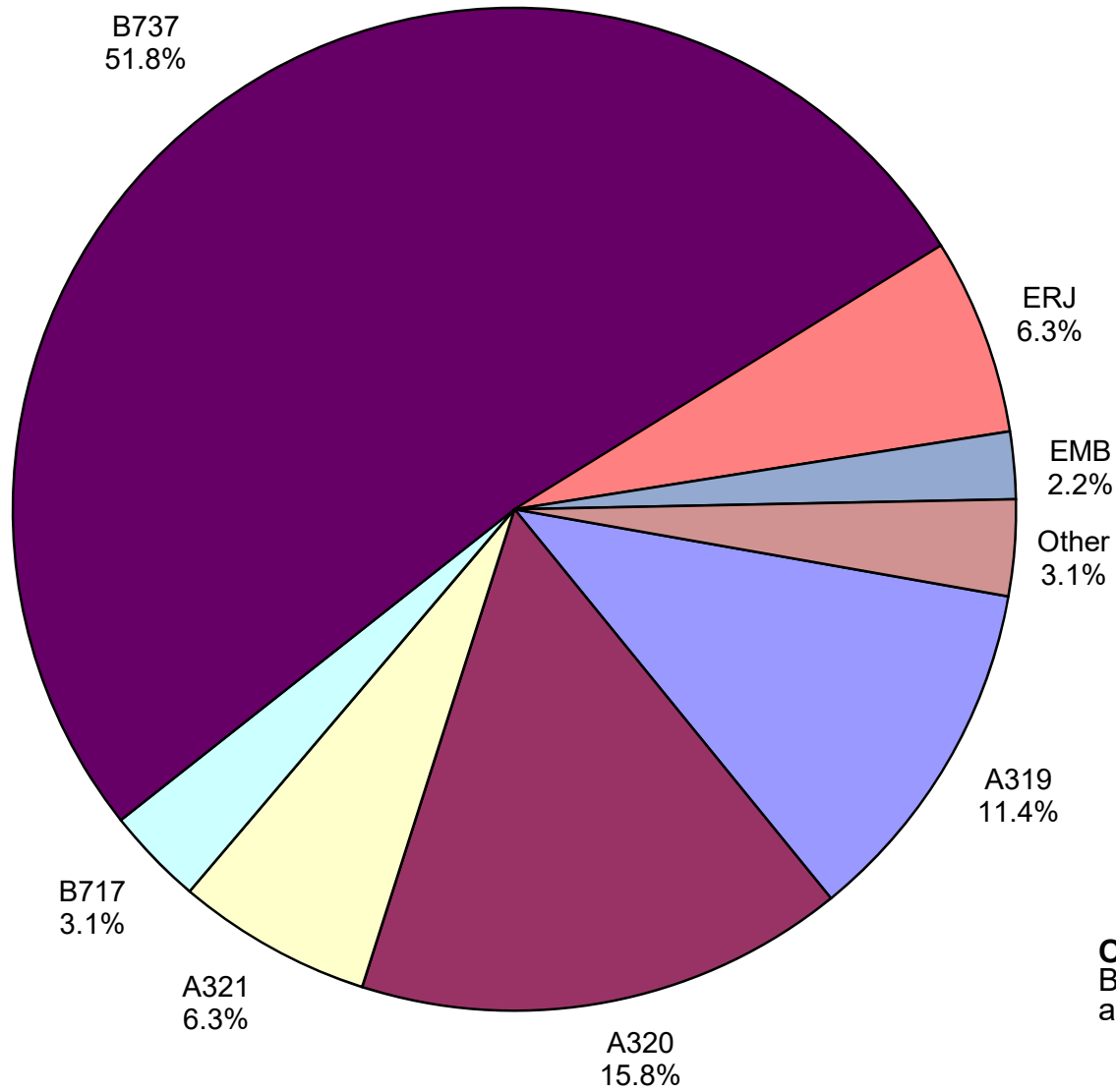


Other = Alaska Airlines

Air Cargo Market Share March 2019

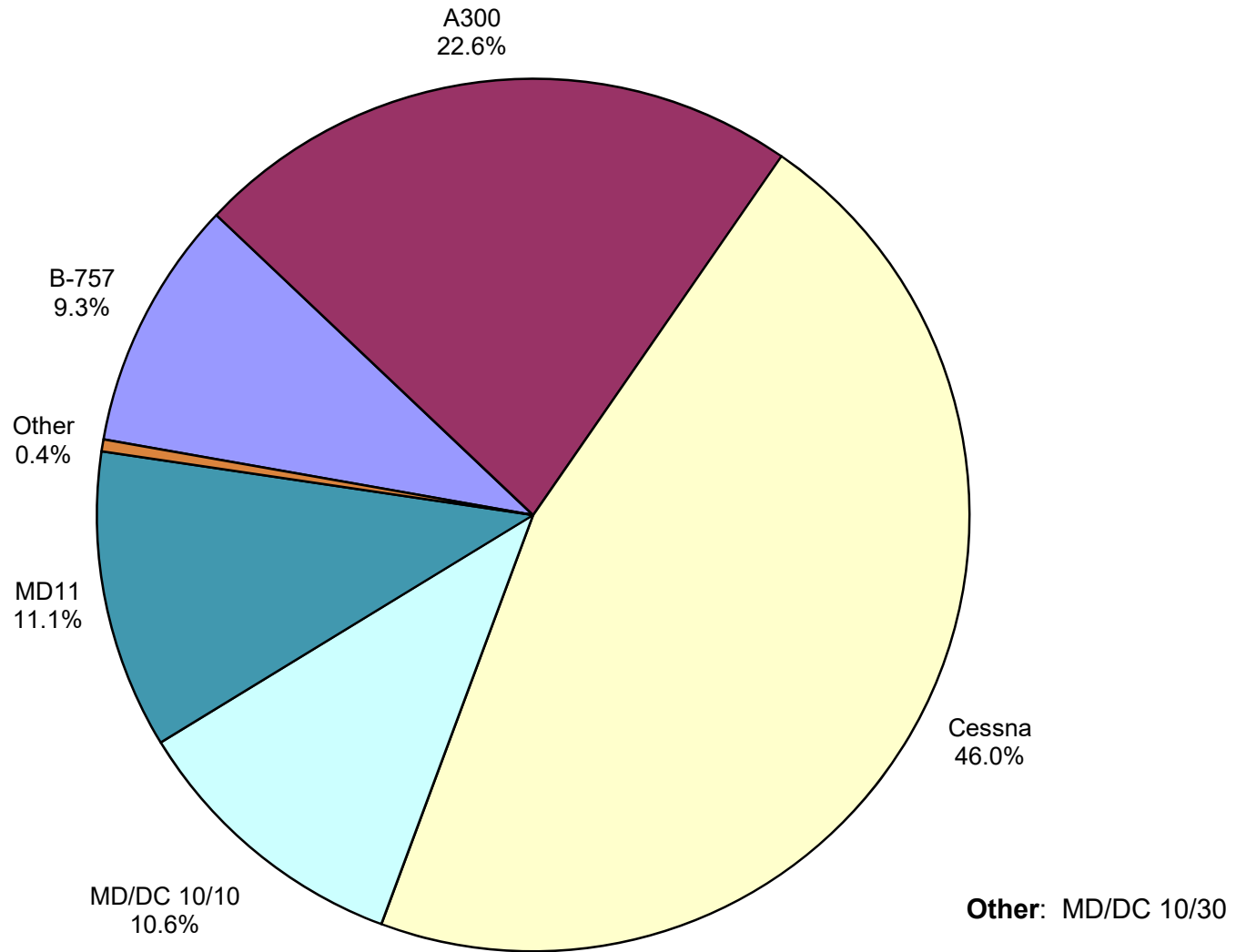


**AUS Scheduled Passenger Aircraft Fleet Mix
March 2019**



Other: B-747-400, B-757,
B-777, B787-900, CRJ, MD82
and MD83

**AUS Scheduled Cargo Aircraft Fleet Mix
March 2019**



Austin-Bergstrom International Airport

PAX Detail Report - March, 2019

Company	03/2019	03/2018	Period		YTD 2019	YTD 2018	YTD		2019 Share	2018 Share	Share Diff
			Difference	Change			Difference	Change			
Aerovías de Mexico S.A. de C.V.	3,097	3,860	-763	-19.8	8,600	10,088	-1,488	-14.8	0.2	0.3	-0.1
Air Canada	5,381	4,040	1,341	33.2	14,171	10,431	3,740	35.9	0.4	0.3	0.1
Alaska Airlines	51,008	50,369	639	1.3	134,558	120,421	14,137	11.7	3.6	3.6	0.0
Allegiant Air	20,751	30,470	-9,719	-31.9	40,609	71,971	-31,362	-43.6	1.1	2.1	-1.0
American Airlines	271,837	240,234	31,603	13.2	733,244	633,196	100,048	15.8	19.8	18.9	0.9
British Airways	15,707	11,734	3,973	33.9	38,531	31,371	7,160	22.8	1.0	0.9	0.1
Concesionaria Vuela Compañía de Aviación, S.A.P.I. de C.V.	0	1,373	-1,373	-100.0	434	3,244	-2,810	-86.6	0.0	0.1	-0.1
Delta Air Lines	198,508	181,683	16,825	9.3	488,523	445,546	42,977	9.6	13.2	13.3	-0.1
Deutsche Lufthansa AG	259	0	259	0.0	259	0	259	0.0	0.0	0.0	0.0
Frontier Airlines	44,465	43,864	601	1.4	130,386	127,680	2,706	2.1	3.5	3.8	-0.3
JetBlue Airways	51,163	60,285	-9,122	-15.1	132,770	146,525	-13,755	-9.4	3.6	4.4	-0.8
Miami Air International	652	309	343	111.0	776	309	467	151.1	0.0	0.0	0.0
Norwegian Air UK LTD	7,656	1,719	5,937	345.4	7,656	1,719	5,937	345.4	0.2	0.1	0.2
Scandinavian Airlines	423	697	-274	-39.3	423	697	-274	-39.3	0.0	0.0	0.0
Southwest Airlines	496,419	465,117	31,302	6.7	1,319,593	1,237,565	82,028	6.6	35.6	36.9	-1.3
Spirit Airlines	69,937	0	69,937	0.0	97,333	0	97,333	0.0	2.6	0.0	2.6
Sun Country Airlines	334	382	-48	-12.6	1,524	1,280	244	19.1	0.0	0.0	0.0
Swift Air	531	293	238	81.2	993	559	434	77.6	0.0	0.0	0.0
United Airlines	223,699	209,218	14,481	6.9	555,633	500,795	54,838	11.0	15.0	14.9	0.1
VIA Airlines	1,189	1,141	48	4.2	1,933	3,160	-1,227	-38.8	0.1	0.1	0.0
Virgin America	0	0	0	0.0	0	11,117	-11,117	-100.0	0.0	0.3	-0.3
Report Totals	1,463,016	1,306,788	156,228	12.0%	3,707,949	3,357,674	350,275	10.4%			

Statistics Included in Report:

Domestic Passengers:	Enplaned Revenue, Deplaned Revenue, Enplaned Non-Revenue, Deplaned Non-Revenue
International Passengers:	Enplaned Revenue, Deplaned Revenue, Enplaned Non-Revenue, Deplaned Non-Revenue
International Pre-Cleared Passengers:	Enplaned Revenue, Deplaned Revenue, Enplaned Non-Revenue, Deplaned Non-Revenue
South Terminal Domestic Passengers:	Enplaned Revenue, Deplaned Revenue, Enplaned Non-Revenue, Deplaned Non-Revenue

Austin-Bergstrom International Airport

Summary Landing Report

Landing Type: Total

Month	2019		2018		2017		% Change 2019 - 2018		% Change 2018 - 2017	
	Count	Weight	Count	Weight	Count	Weight	Count	Weight	Count	Weight
January	5,348	733,746,679	5,086	688,923,110	4,768	612,688,871	5.15%	6.51%	6.67%	12.44%
February	5,040	692,708,930	4,706	637,500,756	4,357	552,711,639	7.10%	8.66%	8.01%	15.34%
March	5,964	825,483,911	5,643	760,648,260	5,307	685,661,659	5.69%	8.52%	6.33%	10.94%
April			5,797	793,367,736	5,179	689,402,051			11.93%	15.08%
May			6,117	831,431,763	5,529	736,484,083			10.63%	12.89%
June			6,211	852,438,818	5,603	752,628,599			10.85%	13.26%
July			6,346	869,502,671	5,698	763,088,836			11.37%	13.95%
August			6,245	861,046,997	5,490	741,110,019			13.75%	16.18%
September			5,737	790,731,351	5,046	679,381,339			13.69%	16.39%
October			6,078	846,310,860	5,448	743,973,610			11.56%	13.76%
November			5,684	780,994,101	5,289	718,179,948			7.47%	8.75%
December			5,600	761,317,385	5,442	737,424,963			2.90%	3.24%
Totals for Selected Period	16,352	2,251,939,520	15,435	2,087,072,126	14,432	1,851,062,169	5.94%	7.90%	6.95%	12.75%
Yearly Totals	16,352	2,251,939,520	69,250	9,474,213,808	63,156	8,412,735,617			9.65%	12.62%