

**Austin-Bergstrom International Airport
Aviation Activity Report
Calendar Year 2021 vs 2020**

Combined Terminals

	2/2021	2/2020	Percent Change	1/2021 - 2/2021	1/2020 - 2/2020	Percent Change
ABIA						
Total Passenger Activity						
Domestic Enplaned Revenue	161,396	569,623	-71.67%	347,968	1,145,430	-69.62%
Domestic Deplaned Revenue	159,185	575,003	-72.32%	355,791	1,170,324	-69.60%
International Enplaned Revenue	562	10,513	-94.65%	1,151	22,904	-94.97%
International Deplaned Revenue	573	10,679	-94.63%	1,534	24,637	-93.77%
Domestic Enplaned Non-Revenue	5,397	13,662	-60.50%	12,406	27,788	-55.35%
Domestic Deplaned Non-Revenue	5,256	12,975	-59.49%	12,114	25,893	-53.22%
International Enplaned Non-Revenue	15	159	-90.57%	27	283	-90.46%
International Deplaned Non-Revenue	1	146	-99.32%	10	250	-96.00%
Intl Enplaned Pre-Cleared Revenue	0	2,239	-100.00%	0	4,265	-100.00%
Intl Deplaned Pre-Cleared Revenue	0	2,003	-100.00%	0	3,889	-100.00%
Intl Enplaned Pre-Cleared Non-Revenue	0	43	-100.00%	0	82	-100.00%
Intl Deplaned Pre-Cleared Non-Revenue	0	41	-100.00%	0	86	-100.00%
South Terminal Domestic Enplaned Revenue	6,193	24,759	-74.99%	13,762	48,563	-71.66%
South Terminal Domestic Deplaned Revenue	6,099	25,383	-75.97%	13,948	51,127	-72.72%
South Terminal Domestic Enplaned Non-Revenue	30	122	-75.41%	73	208	-64.90%
South Terminal Domestic Deplaned Non-Revenue	28	119	-76.47%	68	213	-68.08%
ABIA Passenger Totals	344,735	1,247,469	-72.37%	758,852	2,525,942	-69.96%
<i>ABIA Enplaned Passenger Totals</i>	<i>173,593</i>	<i>621,120</i>	<i>-72.05%</i>	<i>375,387</i>	<i>1,249,523</i>	<i>-69.96%</i>
<i>ABIA Deplaned Passenger Totals</i>	<i>171,142</i>	<i>626,349</i>	<i>-72.68%</i>	<i>383,465</i>	<i>1,276,419</i>	<i>-69.96%</i>
<i>ABIA Domestic Passenger Totals</i>	<i>343,584</i>	<i>1,221,646</i>	<i>-71.88%</i>	<i>756,130</i>	<i>2,469,546</i>	<i>-69.38%</i>
<i>ABIA International Passenger Totals</i>	<i>1,151</i>	<i>25,823</i>	<i>-95.54%</i>	<i>2,722</i>	<i>56,396</i>	<i>-95.17%</i>

CURRENT PASSENGER RECORD = 1,643,016 RECORD SET = JULY 2019

Total Aircraft Operations

Air Carrier	4,242	10,593	-59.95%	9,724	21,913	-55.62%
Commuter & Air Taxi	1,262	1,204	4.82%	2,653	2,518	5.36%
Military	378	429	-11.89%	783	864	-9.38%
General Aviation						
Itinerant	2,262	3,284	-31.12%	5,370	6,538	-17.86%
Local	6	28	-78.57%	20	84	-76.19%
Total G.A.	2,268	3,312	-31.52%	5,390	6,622	-18.60%
Total Operations	8,150	15,538	-47.55%	18,550	31,917	-41.88%

**Austin-Bergstrom International Airport
Aviation Activity Report
Calendar Year 2021 vs 2020**

By Terminal

	2/2021	2/2020	Percent Change	1/2021 - 2/2021	1/2020 - 2/2020	Percent Change
<u>Barbara Jordan Terminal (BJT)</u>						
Passenger Activity						
Domestic Enplaned Revenue	161,396	569,623	-71.67%	347,968	1,145,430	-69.62%
Domestic Deplaned Revenue	159,185	575,003	-94.65%	355,791	1,170,324	-94.97%
International Enplaned Revenue	562	10,513	-94.63%	1,151	22,904	-93.77%
International Deplaned Revenue	573	10,679	-94.63%	1,534	24,637	-93.77%
Domestic Enplaned Non-Revenue	5,397	13,662	-60.50%	12,406	27,788	-55.35%
Domestic Deplaned Non-Revenue	5,256	12,975	-59.49%	12,114	25,893	-53.22%
International Enplaned Non-Revenue	15	159	-90.57%	27	283	-90.46%
International Deplaned Non-Revenue	1	146	-99.32%	10	250	-96.00%
Intl Enplaned Pre-Cleared Revenue	0	2,239	-100.00%	0	4,265	-100.00%
Intl Deplaned Pre-Cleared Revenue	0	2,003	-100.00%	0	3,889	-100.00%
Intl Enplaned Pre-Cleared Non-Revenue	0	43	-100.00%	0	82	-100.00%
Intl Deplaned Pre-Cleared Non-Revenue	0	41	-100.00%	0	86	-100.00%
Barbara Jordan Terminal Passenger Totals	332,385	1,197,086	-72.23%	731,001	2,425,831	-69.87%
<i>BJT Enplaned Passenger Totals</i>	<i>167,370</i>	<i>596,239</i>	<i>-71.93%</i>	<i>361,552</i>	<i>1,200,752</i>	<i>-69.89%</i>
<i>BJT Deplaned Passenger Totals</i>	<i>165,015</i>	<i>600,847</i>	<i>-72.54%</i>	<i>369,449</i>	<i>1,225,079</i>	<i>-69.84%</i>
<i>BJT Domestic Passenger Totals</i>	<i>331,234</i>	<i>1,171,263</i>	<i>-71.72%</i>	<i>728,279</i>	<i>2,369,435</i>	<i>-69.26%</i>
<i>BJT International Passenger Totals</i>	<i>1,151</i>	<i>25,823</i>	<i>-95.54%</i>	<i>2,722</i>	<i>56,396</i>	<i>-95.17%</i>
<u>South Terminal (ST)</u>						
Passenger Activity						
South Terminal Domestic Enplaned Revenue	6,193	24,759	-74.99%	13,762	48,563	-71.66%
South Terminal Domestic Deplaned Revenue	6,099	25,383	-75.97%	13,948	51,127	-72.72%
South Terminal Domestic Enplaned Non-Revenue	30	122	-75.41%	73	208	-64.90%
South Terminal Domestic Deplaned Non-Revenue	28	119	-76.47%	68	213	-68.08%
South Terminal Passenger Totals	12,350	50,383	-75.49%	27,851	100,111	-72.18%
<i>ST Enplaned Passenger Totals</i>	<i>6,223</i>	<i>24,881</i>	<i>-74.99%</i>	<i>13,835</i>	<i>48,771</i>	<i>-71.63%</i>
<i>ST Deplaned Passenger Totals</i>	<i>6,127</i>	<i>25,502</i>	<i>-75.97%</i>	<i>14,016</i>	<i>51,340</i>	<i>-72.70%</i>

**Austin-Bergstrom International Airport
Aviation Activity Report
Calendar Year 2021 vs 2020**

	2/2021	2/2020	Percent Change	1/2021 - 2/2021	1/2020 - 2/2020	Percent Change
<u>Total Cargo Activity</u>						
Mail						
Domestic Enplaned Mail	102,669	253,146	-59.44%	259,008	534,784	-51.57%
Domestic Deplaned Mail	333,790	688,612	-51.53%	813,938	1,498,357	-45.68%
International Enplaned Mail	0	0	0.00%	0	0	0.00%
International Deplaned Mail	0	0	0.00%	0	0	0.00%
South Terminal-Domestic Enplaned Mail	0	0	0.00%	0	0	0.00%
South Terminal-Domestic Deplaned Mail	0	0	0.00%	0	0	0.00%
Mail Totals	436,459	941,758	-53.65%	1,072,946	2,033,141	-47.23%
Cargo						
Domestic Enplaned Cargo	5,531,336	4,637,665	19.27%	14,299,488	9,604,482	48.88%
Domestic Deplaned Cargo	5,898,863	6,396,393	-7.78%	15,941,339	13,565,034	17.52%
International Enplaned Cargo	12,850	250,440	-94.87%	34,952	495,612	-92.95%
International Deplaned Cargo	8,654	143,490	-93.97%	12,730	272,733	-95.33%
South Terminal-Domestic Enplaned Cargo	0	0	0.00%	0	0	0.00%
South Terminal-Domestic Deplaned Cargo	0	0	0.00%	0	0	0.00%
Cargo Totals	11,451,703	11,427,988	0.21%	30,288,509	23,937,861	26.53%
Belly Freight						
Domestic Enplaned Belly Freight	124,606	233,724	-46.69%	240,150	482,364	-50.21%
Domestic Deplaned Belly Freight	301,312	475,967	-36.69%	567,722	950,833	-40.29%
International Enplaned Belly Freight	0	504,491	-100.00%	0	797,840	-100.00%
International Deplaned Belly Freight	0	859,512	-100.00%	0	1,472,520	-100.00%
South Terminal-Domestic Enplaned Belly Frght	0	0	0.00%	0	0	0.00%
South Terminal-Domestic Deplaned Belly Frght	0	0	0.00%	0	0	0.00%
Belly Freight Totals	425,918	2,073,694	-79.46%	807,872	3,703,557	-78.19%
Cargo Totals (Mail, Cargo, Belly Freight)	12,314,080	14,443,440	-14.74%	32,169,327	29,674,559	8.41%
<i>Enplaned Cargo Totals</i>	<i>5,771,461</i>	<i>5,879,466</i>	<i>-1.84%</i>	<i>14,833,598</i>	<i>11,915,082</i>	<i>24.49%</i>
<i>Deplaned Cargo Totals</i>	<i>6,542,619</i>	<i>8,563,974</i>	<i>-23.60%</i>	<i>17,335,729</i>	<i>17,759,477</i>	<i>-2.39%</i>
<i>Domestic Cargo Totals</i>	<i>12,292,576</i>	<i>12,685,507</i>	<i>-3.10%</i>	<i>32,121,645</i>	<i>26,635,854</i>	<i>20.60%</i>
<i>International Cargo Totals</i>	<i>21,504</i>	<i>1,757,933</i>	<i>-98.78%</i>	<i>47,682</i>	<i>3,038,705</i>	<i>-98.43%</i>

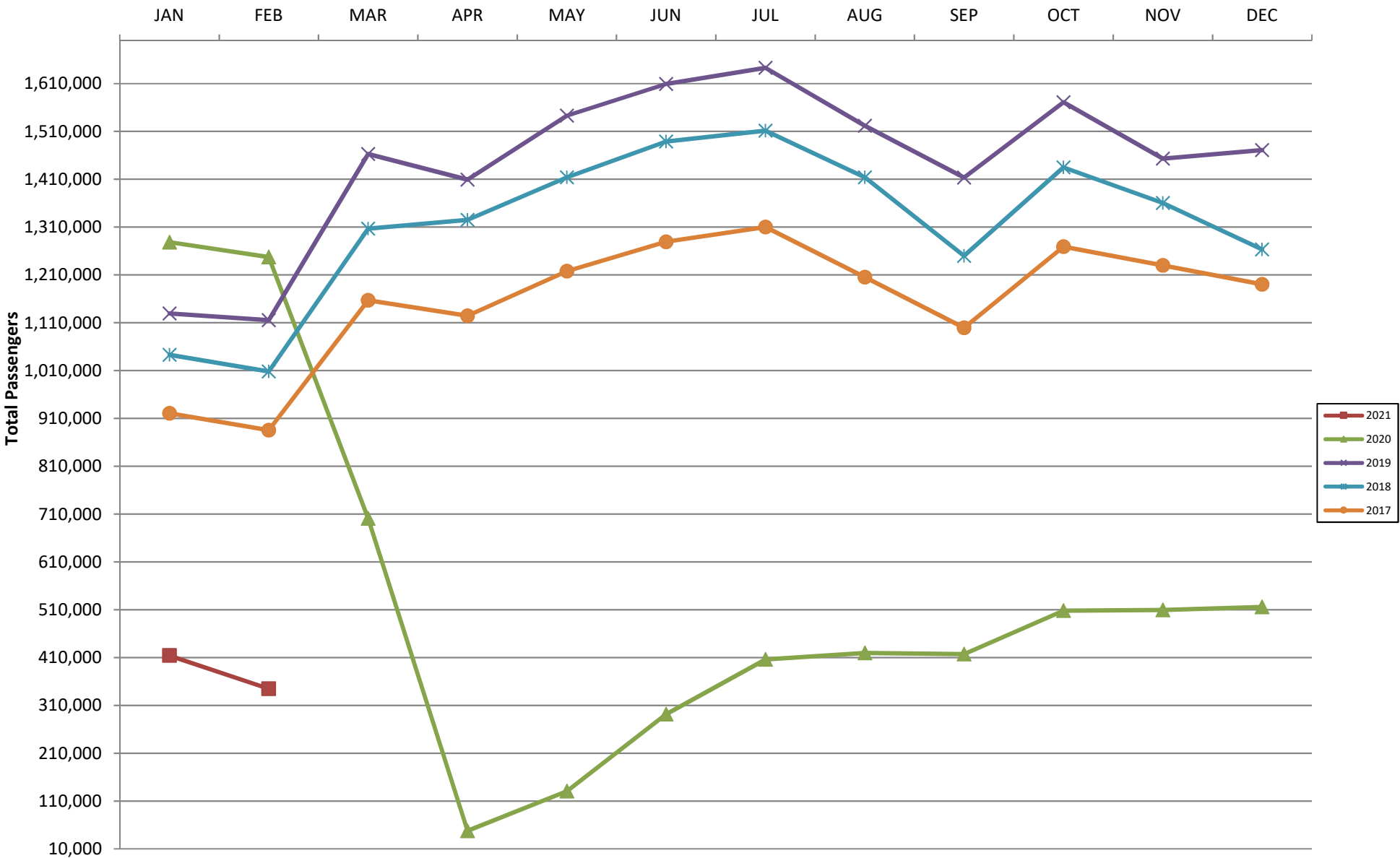
CURRENT CARGO RECORD = 40,215,518

RECORD SET = MARCH 2001

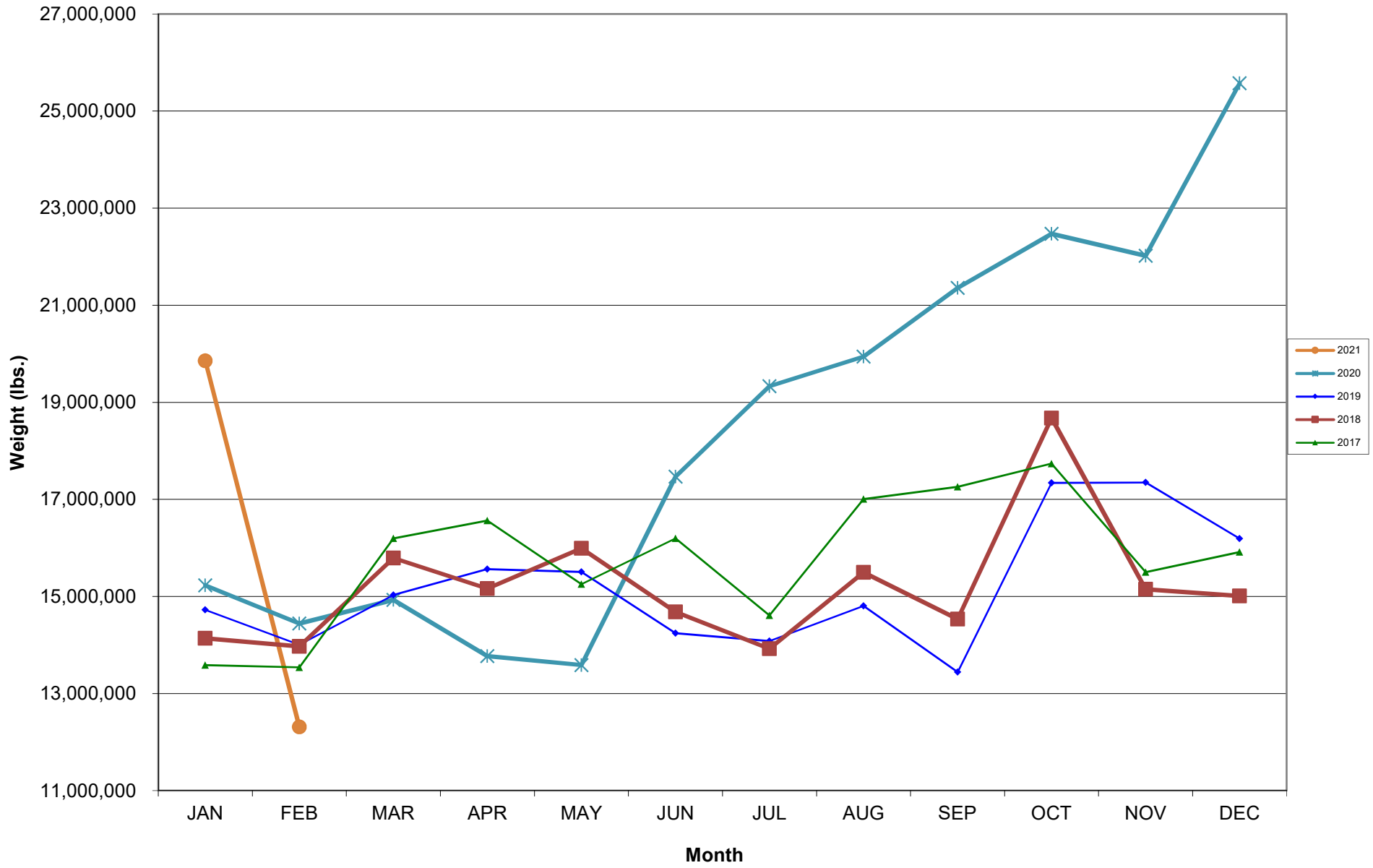
AUS – Airline Codes
February 2021

<u>Code</u>	<u>Carrier</u>
AS	Alaska Airlines, Inc.
G4	Allegiant Air, LLC
AA	American Airlines, Inc.
DL	Delta Air Lines
F9	Frontier Airlines, Inc.
B6	JetBlue Airways Corp.
WN	Southwest Airlines
NK	Spirit Airlines, Inc.
SY	Sun Country Airlines/MN Airlines LLC
UA	United Airlines, Inc.

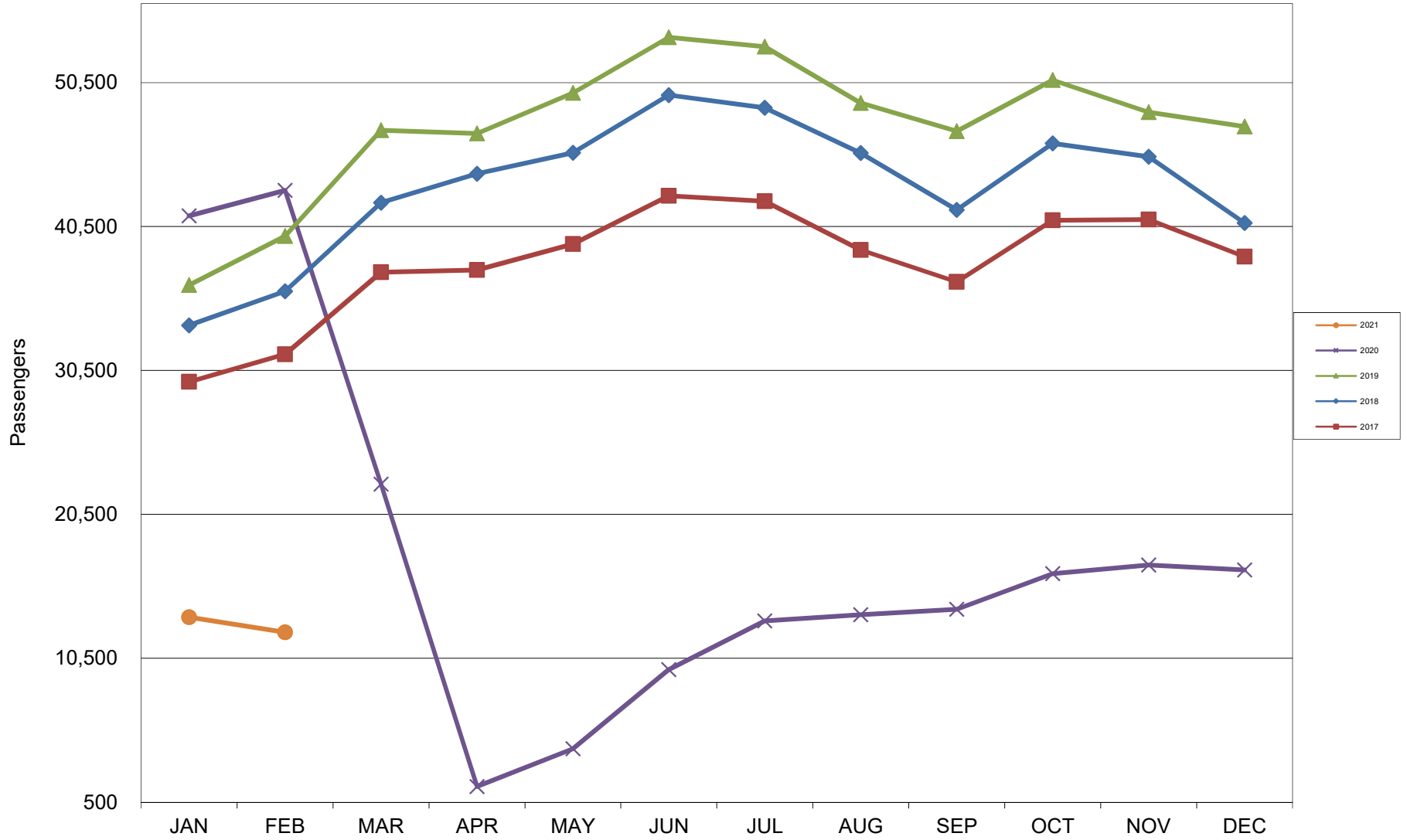
AUSTIN PASSENGER TRAFFIC 5 Year Trend



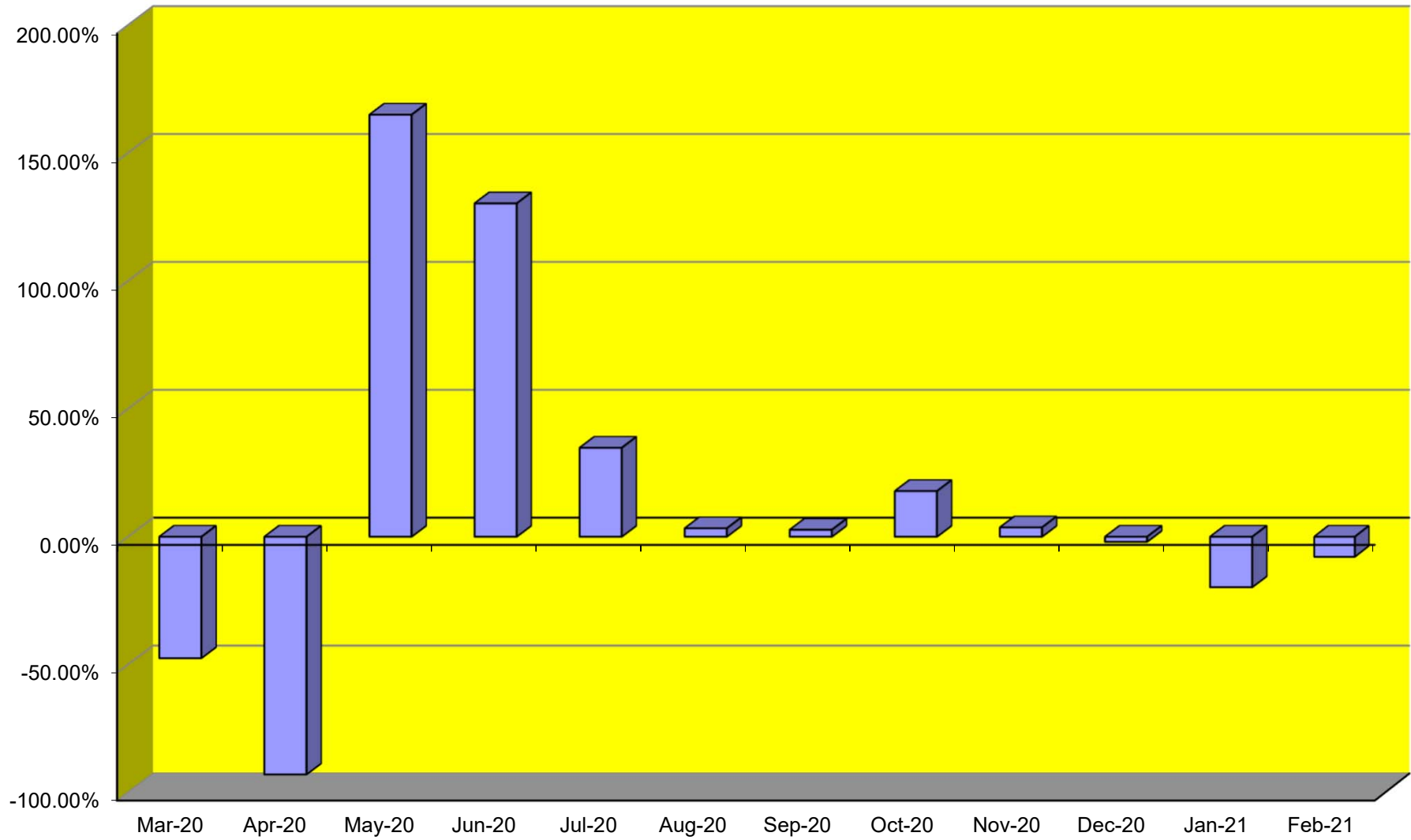
TOTAL CARGO POUNDAGE - AUSTIN, TEXAS



Average Daily Passengers



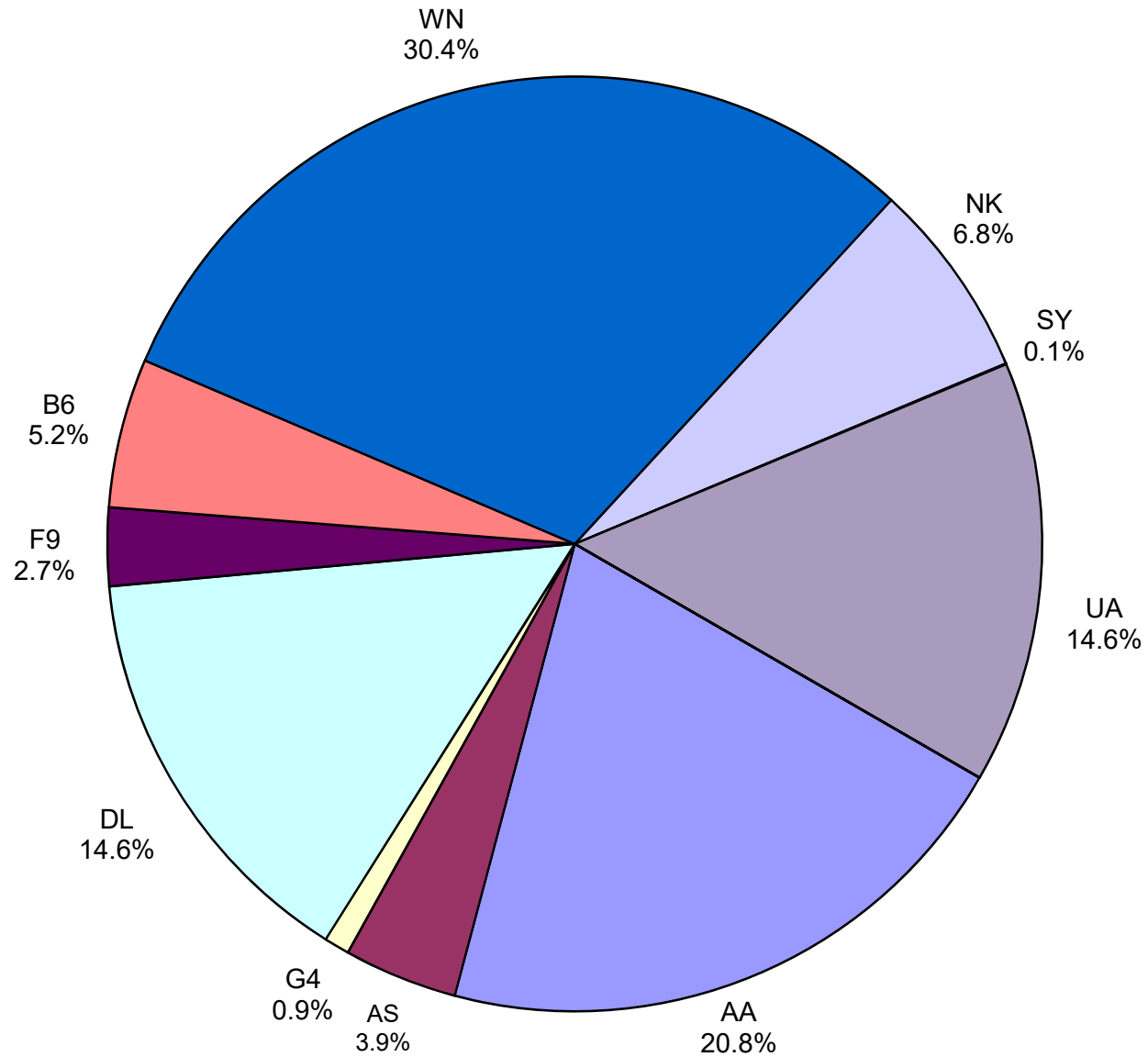
Monthly % Change in Average Daily Passengers



HISTORY OF INTERNATIONAL AIR CARGO



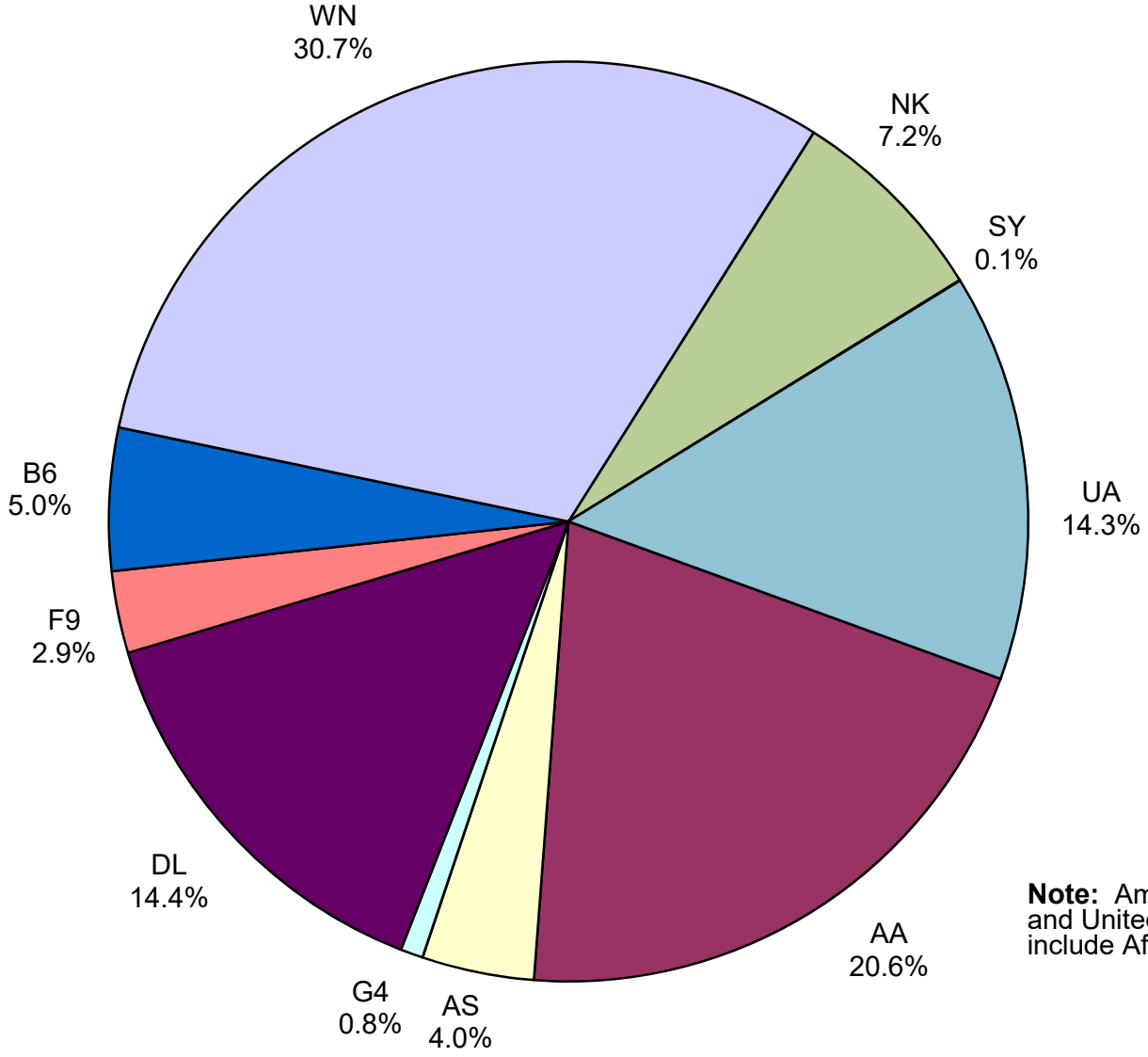
Total Passengers February 2021



Other:

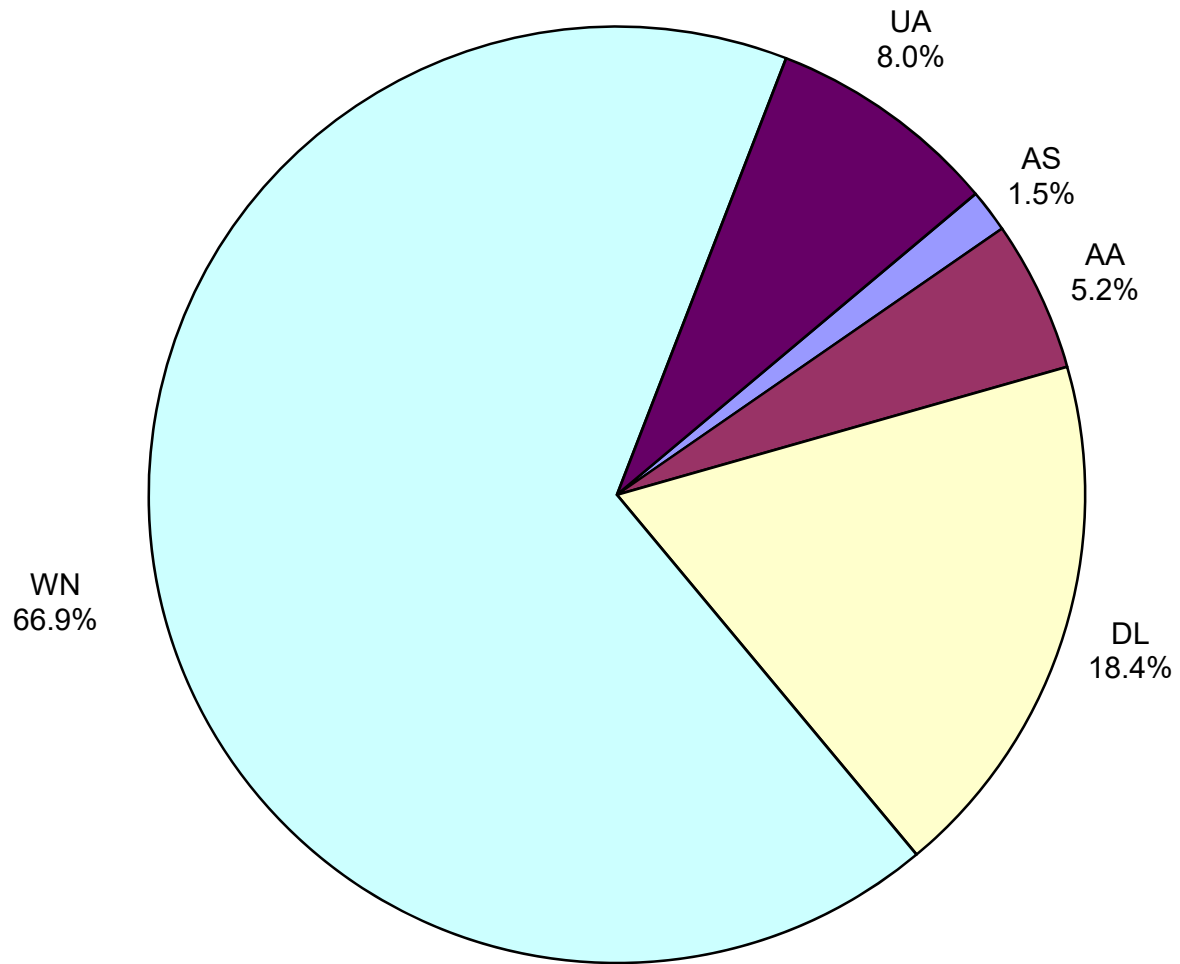
Note: American, Delta and United Airlines percentages include Affiliates.

**All Passenger Carriers
Enplaned Revenue Passengers
February 2021**



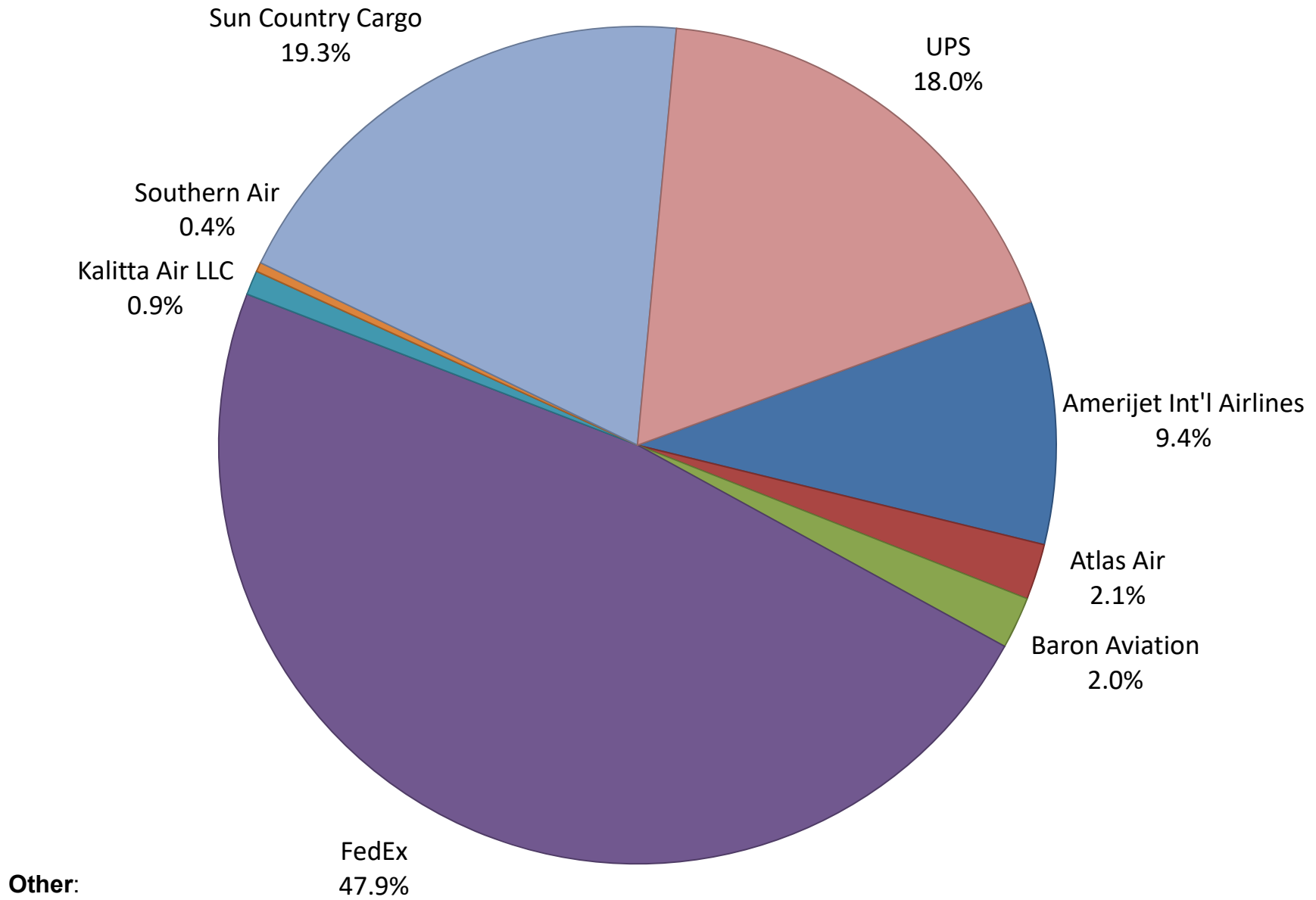
Note: American/US Airways, Delta and United Airlines percentages include Affiliates.

**AUS Belly Freight Market Shares
February 2021**

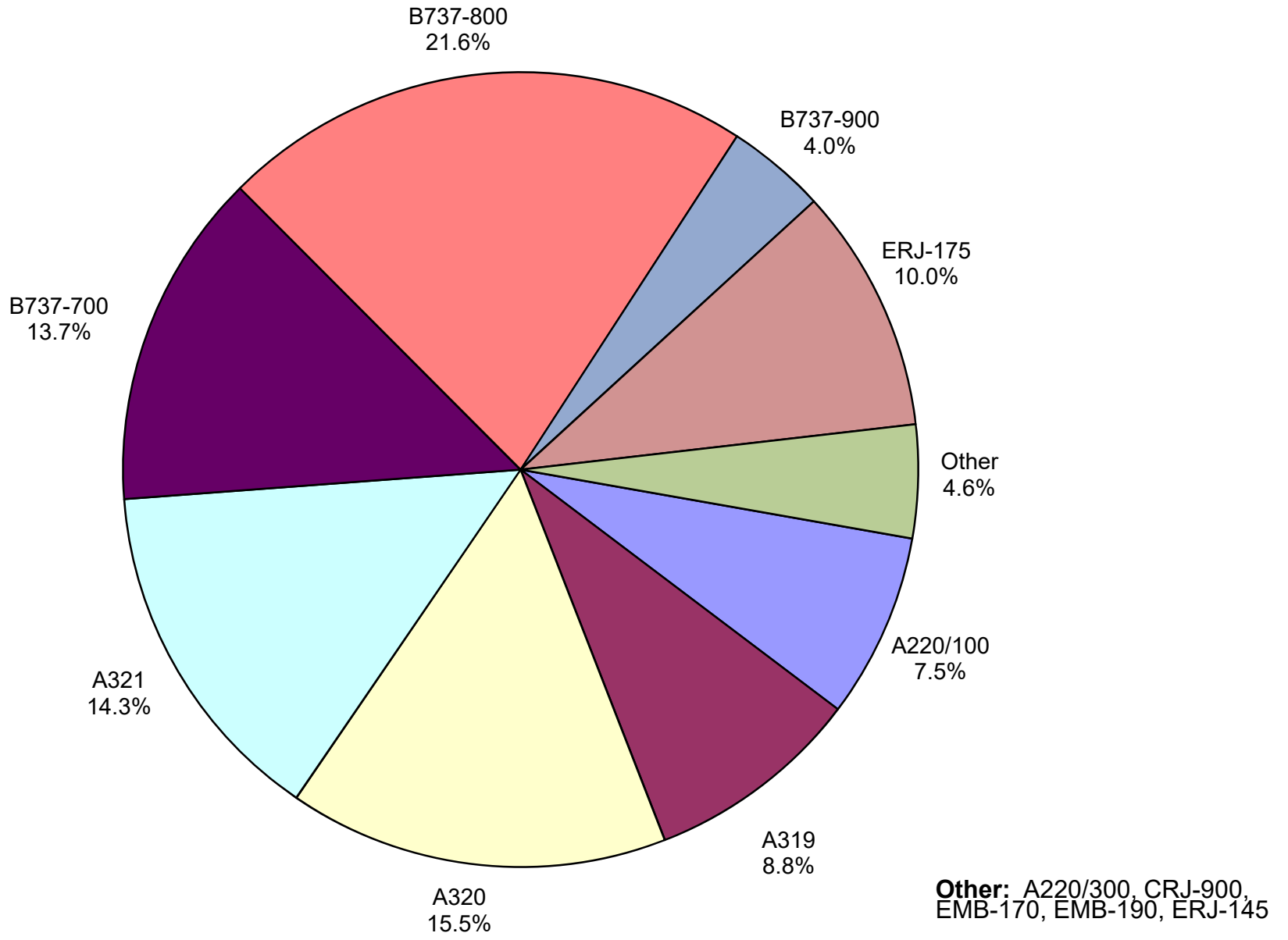


Other =

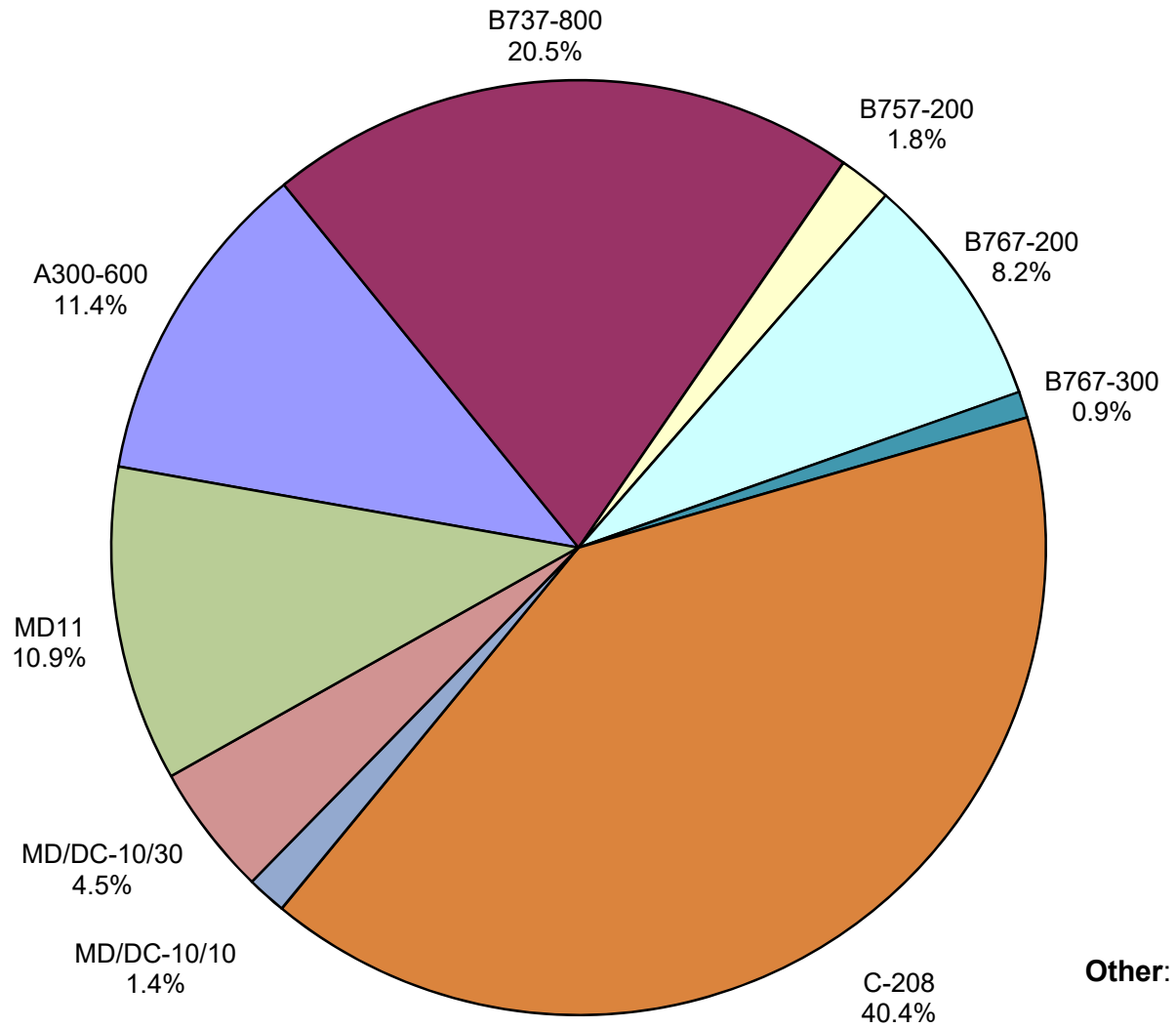
Air Cargo Market Share February 2021



AUS Scheduled Passenger Aircraft Fleet Mix February 2021



**AUS Scheduled Cargo Aircraft Fleet Mix
February 2021**



Austin-Bergstrom International Airport

Pax Detail Report - February, 2021

Company	Period				YTD				2021 Share	2020 Share	Share Diff
	2/2021	2/2020	Difference	Change	YTD 2021	YTD 2020	Difference	Change			
Aerovias de Mexico S.A. de C.V. Pre Bankruptcy	0	3,451	-3,451	-100.0	0	7,596	-7,596	-100.0	0.0	0.3	-0.3
Air Canada	0	4,326	-4,326	-100.0	0	8,322	-8,322	-100.0	0.0	0.3	-0.3
Alaska Airlines INC	13,573	46,426	-32,853	-70.8	27,873	93,124	-65,251	-70.1	3.7	3.7	0.0
Allegiant Air LLC	3,018	6,110	-3,092	-50.6	5,158	11,631	-6,473	-55.7	0.7	0.5	0.2
American Airlines INC	71,714	237,471	-165,757	-69.8	156,212	482,399	-326,187	-67.6	20.6	19.1	1.5
British Airways PLC	0	10,382	-10,382	-100.0	0	24,072	-24,072	-100.0	0.0	1.0	-1.0
Delta Air Lines	50,331	184,262	-133,931	-72.7	104,660	370,319	-265,659	-71.7	13.8	14.7	-0.9
Deutsche Lufthansa AG	0	6,073	-6,073	-100.0	0	13,637	-13,637	-100.0	0.0	0.5	-0.5
Frontier Airlines INC	9,332	44,273	-34,941	-78.9	22,693	88,480	-65,787	-74.4	3.0	3.5	-0.5
JetBlue Airways Corporation	17,811	46,523	-28,712	-61.7	35,039	93,758	-58,719	-62.6	4.6	3.7	0.9
Norwegian Air UK LTD	0	1,147	-1,147	-100.0	0	1,147	-1,147	-100.0	0.0	0.0	0.0
Southwest Airlines	104,863	397,595	-292,732	-73.6	241,509	812,090	-570,581	-70.3	31.8	32.1	-0.3
Spirit Airlines Inc	23,620	75,392	-51,772	-68.7	48,834	149,908	-101,074	-67.4	6.4	5.9	0.5
Sun Country Airlines/MN Airlines LLC	71	44	27	61.4	71	271	-200	-73.8	0.0	0.0	0.0
Swift Air LLC	0	183	-183	-100.0	297	928	-631	-68.0	0.0	0.0	0.0
United Airlines INC	50,402	183,811	-133,409	-72.6	116,506	368,260	-251,754	-68.4	15.4	14.6	0.8
Report Totals	344,735	1,247,469	-902,734	-72.4%	758,852	2,525,942	-1,767,090	-70.0%	100.0%	99.9%	

Statistics Included in Report

Domestic Passengers: Enplaned Revenue, Deplaned Revenue, Enplaned Non-Revenue, Deplaned Non-Revenue

International Passengers: Enplaned Revenue, Deplaned Revenue, Enplaned Non-Revenue, Deplaned Non-Revenue

International Pre-Cleared Passengers: Enplaned Revenue, Deplaned Revenue, Enplaned Non-Revenue, Deplaned Non-Revenue

South Terminal Domestic Passengers: Enplaned Revenue, Deplaned Revenue, Enplaned Non-Revenue, Deplaned Non-Revenue

Austin-Bergstrom International Airport

Summary Landings Report

Landing Type: Total

Month	2021		2020		2019		% Change 2021- 2020		% Change 2020- 2019	
	Count	Weight	Count	Weight	Count	Weight	Count	Weight	Count	Weight
January	2,839	399,216,719	5,762	812,175,948	5,348	733,746,679	-50.73%	-50.85%	7.74%	10.69%
February	2,194	303,710,832	5,382	764,833,023	5,040	692,708,930	-59.23%	-60.29%	6.79%	10.41%
March	0	0	5,278	742,099,772	5,964	825,483,911	-100.00%	-100.00%	-11.50%	-10.10%
April	0	0	1,884	264,508,162	5,899	815,621,798	-100.00%	-100.00%	-68.06%	-67.57%
May	0	0	1,608	223,266,578	6,294	881,747,150	-100.00%	-100.00%	-74.45%	-74.68%
June	0	0	2,119	293,669,395	6,322	890,410,020	-100.00%	-100.00%	-66.48%	-67.02%
July	0	0	3,401	458,639,882	6,551	915,103,306	-100.00%	-100.00%	-48.08%	-49.88%
August	0	0	3,390	473,872,571	6,447	906,499,773	-100.00%	-100.00%	-47.42%	-47.73%
September	0	0	2,791	378,925,681	6,020	848,899,951	-100.00%	-100.00%	-53.64%	-55.36%
October	0	0	2,972	409,225,230	6,459	916,700,076	-100.00%	-100.00%	-53.99%	-55.36%
November	0	0	3,157	438,563,290	5,924	836,527,780	-100.00%	-100.00%	-46.71%	-47.57%
December	0	0	3,126	431,926,302	6,078	848,973,148	-100.00%	-100.00%	-48.57%	-49.12%
Totals For Selected Period	5,033	702,927,551	11,144	1,577,008,971	10,388	1,426,455,609	-54.84%	-55.43%	7.28%	10.55%
Yearly Totals	5,033	702,927,551	40,870	5,691,705,834	72,346	10,112,422,522	-87.69%	-87.65%	-43.51%	-43.72%