

**Austin-Bergstrom International Airport
Aviation Activity Report
Calendar Year 2021 vs 2020**

Combined Terminals

	8/2021	8/2020	Percent Change	1/2021 - 8/2021	1/2020 - 8/2020	Percent Change
ABIA						
Total Passenger Activity						
Domestic Enplaned Revenue	587,991	188,611	211.75%	3,558,491	2,039,822	74.45%
Domestic Deplaned Revenue	617,825	194,514	217.62%	3,541,548	2,051,883	72.60%
International Enplaned Revenue	9,821	295	3,229.15%	53,501	32,294	65.67%
International Deplaned Revenue	11,871	413	2,774.33%	55,531	35,271	57.44%
Domestic Enplaned Non-Revenue	14,036	7,906	77.54%	84,369	68,676	22.85%
Domestic Deplaned Non-Revenue	12,922	7,517	71.90%	80,611	64,238	25.49%
International Enplaned Non-Revenue	36	2	1,700.00%	261	495	-47.27%
International Deplaned Non-Revenue	32	5	540.00%	163	428	-61.92%
Intl Enplaned Pre-Cleared Revenue	0	0	0.00%	0	5,483	-100.00%
Intl Deplaned Pre-Cleared Revenue	0	0	0.00%	0	4,626	-100.00%
Intl Enplaned Pre-Cleared Non-Revenue	0	0	0.00%	0	108	-100.00%
Intl Deplaned Pre-Cleared Non-Revenue	0	0	0.00%	0	100	-100.00%
South Terminal Domestic Enplaned Revenue	20,794	9,526	118.29%	138,569	107,440	28.97%
South Terminal Domestic Deplaned Revenue	22,625	10,601	113.42%	137,826	110,426	24.81%
South Terminal Domestic Enplaned Non-Revenue	56	39	43.59%	533	522	2.11%
South Terminal Domestic Deplaned Non-Revenue	61	46	32.61%	559	510	9.61%
ABIA Passenger Totals	1,298,070	419,475	209.45%	7,651,962	4,522,322	69.20%
<i>ABIA Enplaned Passenger Totals</i>	<i>632,734</i>	<i>206,379</i>	<i>206.59%</i>	<i>3,835,724</i>	<i>2,254,840</i>	<i>70.11%</i>
<i>ABIA Deplaned Passenger Totals</i>	<i>665,336</i>	<i>213,096</i>	<i>212.22%</i>	<i>3,816,238</i>	<i>2,267,482</i>	<i>68.30%</i>
<i>ABIA Domestic Passenger Totals</i>	<i>1,276,310</i>	<i>418,760</i>	<i>204.78%</i>	<i>7,542,506</i>	<i>4,443,517</i>	<i>69.74%</i>
<i>ABIA International Passenger Totals</i>	<i>21,760</i>	<i>715</i>	<i>2943.36%</i>	<i>109,456</i>	<i>78,805</i>	<i>38.89%</i>

CURRENT PASSENGER RECORD = 1,643,016 RECORD SET = JULY 2019

Total Aircraft Operations

Air Carrier	12,724	6,550	94.26%	72,971	55,859	30.63%
Commuter & Air Taxi	1,555	1,231	26.32%	13,248	8,308	59.46%
Military	455	534	-14.79%	3,635	3,244	12.05%
General Aviation						
Itinerant	3,739	3,221	16.08%	28,206	21,558	30.84%
Local	0	0	0.00%	32	268	-88.06%
Total G.A.	3,739	3,221	16.08%	28,238	21,826	29.38%
Total Operations	18,473	11,536	60.13%	118,092	89,237	32.34%

**Austin-Bergstrom International Airport
Aviation Activity Report
Calendar Year 2021 vs 2020**

By Terminal

	8/2021	8/2020	Percent Change	1/2021 - 8/2021	1/2020 - 8/2020	Percent Change
Barbara Jordan Terminal (BJT)						
Passenger Activity						
Domestic Enplaned Revenue	587,991	188,611	211.75%	3,558,491	2,039,822	74.45%
Domestic Deplaned Revenue	617,825	194,514	217.62%	3,541,548	2,051,883	65.67%
International Enplaned Revenue	9,821	295	3229.15%	53,501	32,294	57.44%
International Deplaned Revenue	11,871	413	2774.33%	55,531	35,271	57.44%
Domestic Enplaned Non-Revenue	14,036	7,906	77.54%	84,369	68,676	22.85%
Domestic Deplaned Non-Revenue	12,922	7,517	71.90%	80,611	64,238	25.49%
International Enplaned Non-Revenue	36	2	1700.00%	261	495	-47.27%
International Deplaned Non-Revenue	32	5	540.00%	163	428	-61.92%
Intl Enplaned Pre-Cleared Revenue	0	0	0.00%	0	5,483	-100.00%
Intl Deplaned Pre-Cleared Revenue	0	0	0.00%	0	4,626	-100.00%
Intl Enplaned Pre-Cleared Non-Revenue	0	0	0.00%	0	108	-100.00%
Intl Deplaned Pre-Cleared Non-Revenue	0	0	0.00%	0	100	-100.00%
Barbara Jordan Terminal Passenger Totals	1,254,534	399,263	214.21%	7,374,475	4,303,424	71.36%
<i>BJT Enplaned Passenger Totals</i>	<i>611,884</i>	<i>196,814</i>	<i>210.89%</i>	<i>3,696,622</i>	<i>2,146,878</i>	<i>72.19%</i>
<i>BJT Deplaned Passenger Totals</i>	<i>642,650</i>	<i>202,449</i>	<i>217.44%</i>	<i>3,677,853</i>	<i>2,156,546</i>	<i>70.54%</i>
<i>BJT Domestic Passenger Totals</i>	<i>1,232,774</i>	<i>398,548</i>	<i>209.32%</i>	<i>7,265,019</i>	<i>4,224,619</i>	<i>71.97%</i>
<i>BJT International Passenger Totals</i>	<i>21,760</i>	<i>715</i>	<i>2943.36%</i>	<i>109,456</i>	<i>78,805</i>	<i>38.89%</i>
South Terminal (ST)						
Passenger Activity						
South Terminal Domestic Enplaned Revenue	20,794	9,526	118.29%	138,569	107,440	28.97%
South Terminal Domestic Deplaned Revenue	22,625	10,601	113.42%	137,826	110,426	24.81%
South Terminal Domestic Enplaned Non-Revenue	56	39	43.59%	533	522	2.11%
South Terminal Domestic Deplaned Non-Revenue	61	46	32.61%	559	510	9.61%
South Terminal Passenger Totals	43,536	20,212	115.40%	277,487	218,898	26.77%
<i>ST Enplaned Passenger Totals</i>	<i>20,850</i>	<i>9,565</i>	<i>117.98%</i>	<i>139,102</i>	<i>107,962</i>	<i>28.84%</i>
<i>ST Deplaned Passenger Totals</i>	<i>22,686</i>	<i>10,647</i>	<i>113.07%</i>	<i>138,385</i>	<i>110,936</i>	<i>24.74%</i>

**Austin-Bergstrom International Airport
Aviation Activity Report
Calendar Year 2021 vs 2020**

	8/2021	8/2020	Percent Change	1/2021 - 8/2021	1/2020 - 8/2020	Percent Change
<u>Total Cargo Activity</u>						
Mail						
Domestic Enplaned Mail	123,497	198,495	-37.78%	1,030,412	1,382,608	-25.47%
Domestic Deplaned Mail	604,168	443,836	36.12%	4,160,623	3,469,201	19.93%
International Enplaned Mail	0	0	0.00%	0	0	0.00%
International Deplaned Mail	0	0	0.00%	0	0	0.00%
South Terminal-Domestic Enplaned Mail	0	0	0.00%	0	0	0.00%
South Terminal-Domestic Deplaned Mail	0	0	0.00%	0	0	0.00%
Mail Totals	727,665	642,331	13.29%	5,191,035	4,851,809	6.99%
Cargo						
Domestic Enplaned Cargo	6,863,913	9,673,893	-29.05%	57,406,902	47,880,245	19.90%
Domestic Deplaned Cargo	9,293,017	9,062,363	2.55%	72,273,231	66,499,227	8.68%
International Enplaned Cargo	8,616	27,957	-69.18%	140,087	1,067,598	-86.88%
International Deplaned Cargo	18,116	6,694	170.63%	246,697	525,445	-53.05%
South Terminal-Domestic Enplaned Cargo	0	0	0.00%	0	0	0.00%
South Terminal-Domestic Deplaned Cargo	0	0	0.00%	0	0	0.00%
Cargo Totals	16,183,662	18,770,907	-13.78%	130,066,917	115,972,515	12.15%
Belly Freight						
Domestic Enplaned Belly Freight	437,438	212,057	106.28%	2,347,021	1,899,182	23.58%
Domestic Deplaned Belly Freight	730,917	316,804	130.72%	4,119,048	2,888,784	42.59%
International Enplaned Belly Freight	0	0	0.00%	0	1,035,039	-100.00%
International Deplaned Belly Freight	0	0	0.00%	0	2,056,175	-100.00%
South Terminal-Domestic Enplaned Belly Frght	0	0	0.00%	0	0	0.00%
South Terminal-Domestic Deplaned Belly Frght	0	0	0.00%	0	0	0.00%
Belly Freight Totals	1,168,355	528,861	120.92%	6,466,069	7,879,180	-17.93%
Cargo Totals (Mail, Cargo, Belly Freight)	18,079,682	19,942,099	-9.34%	141,724,021	128,703,504	10.12%
<i>Enplaned Cargo Totals</i>	<i>7,433,464</i>	<i>10,112,402</i>	<i>-26.49%</i>	<i>60,924,422</i>	<i>53,264,672</i>	<i>14.38%</i>
<i>Deplaned Cargo Totals</i>	<i>10,646,218</i>	<i>9,829,697</i>	<i>8.31%</i>	<i>80,799,599</i>	<i>75,438,832</i>	<i>7.11%</i>
<i>Domestic Cargo Totals</i>	<i>18,052,950</i>	<i>19,907,448</i>	<i>-9.32%</i>	<i>141,337,237</i>	<i>124,019,247</i>	<i>13.96%</i>
<i>International Cargo Totals</i>	<i>26,732</i>	<i>34,651</i>	<i>-22.85%</i>	<i>386,784</i>	<i>4,684,257</i>	<i>-91.74%</i>

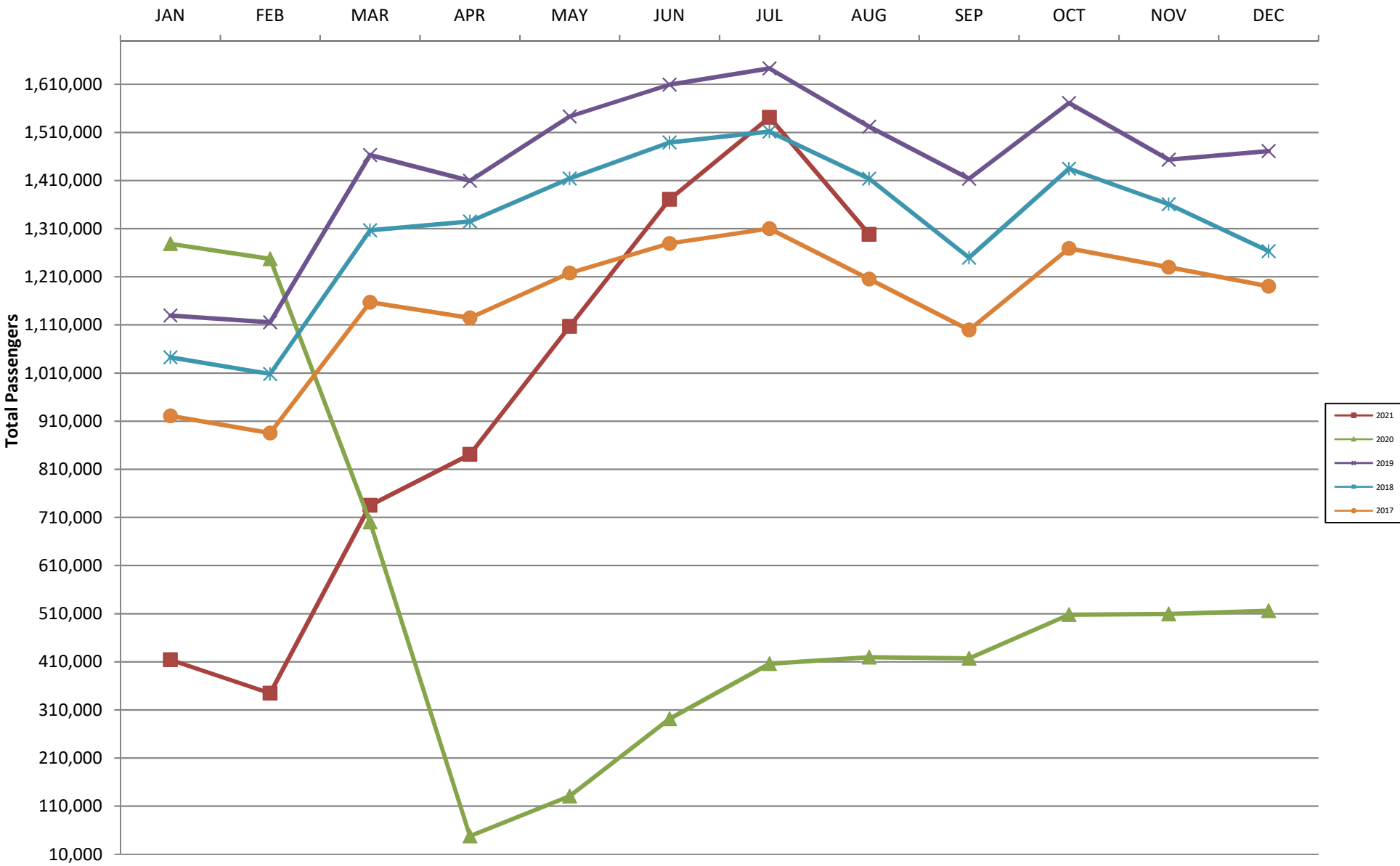
CURRENT CARGO RECORD = 40,215,518

RECORD SET = MARCH 2001

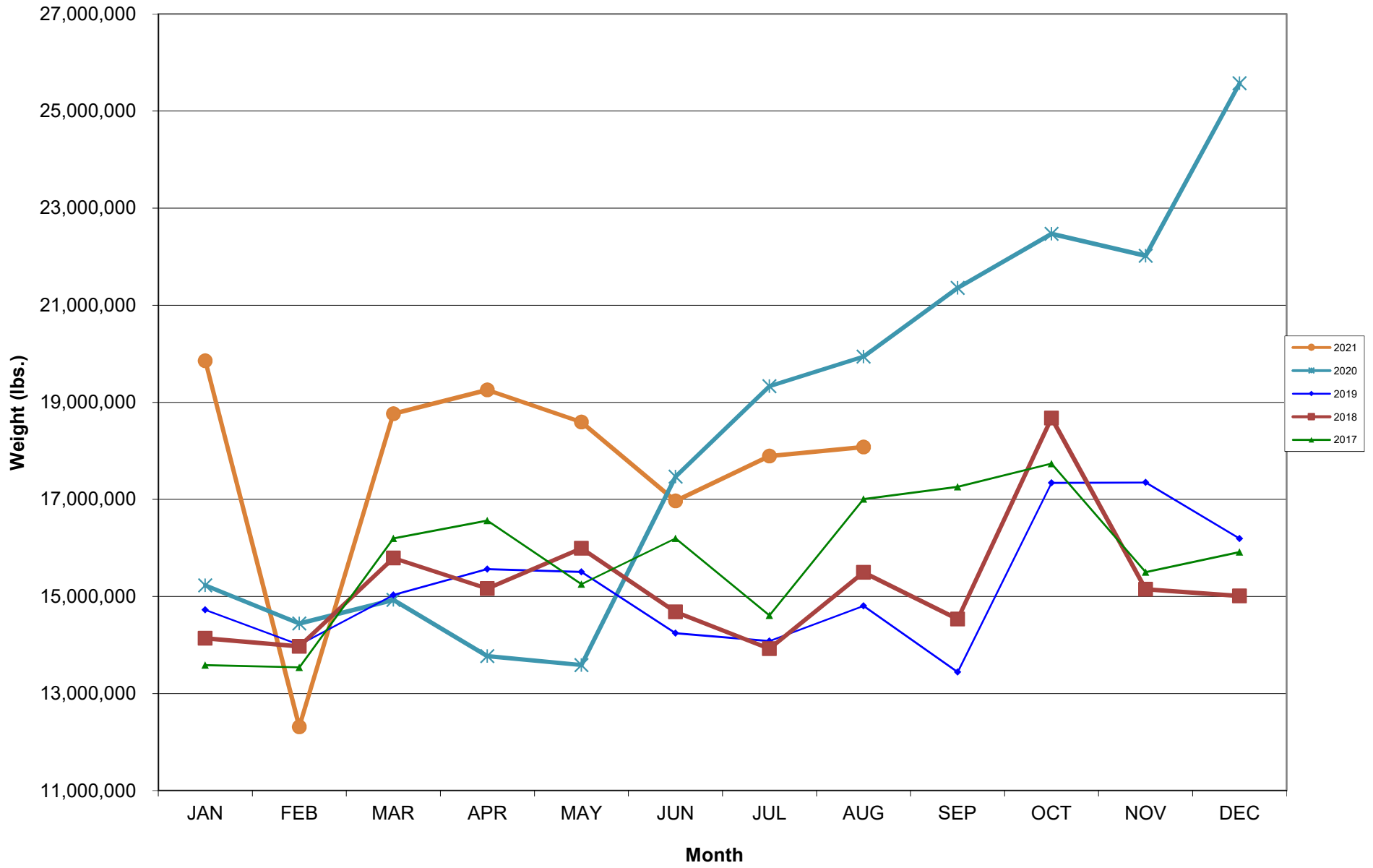
AUS – Airline Codes
August 2021

<u>Code</u>	<u>Carrier</u>
AM	Aerovias de Mexico S.A. de C.V. dba Aeromexico
AS	Alaska Airlines, Inc.
G4	Allegiant Air, LLC
AA	American Airlines, Inc.
DL	Delta Air Lines
F9	Frontier Airlines, Inc.
HA	Hawaiian Airlines, Inc.
B6	JetBlue Airways Corp.
WN	Southwest Airlines
NK	Spirit Airlines, Inc.
SY	Sun Country Airlines/MN Airlines LLC
WQ	Swift Air LLC
UA	United Airlines, Inc.

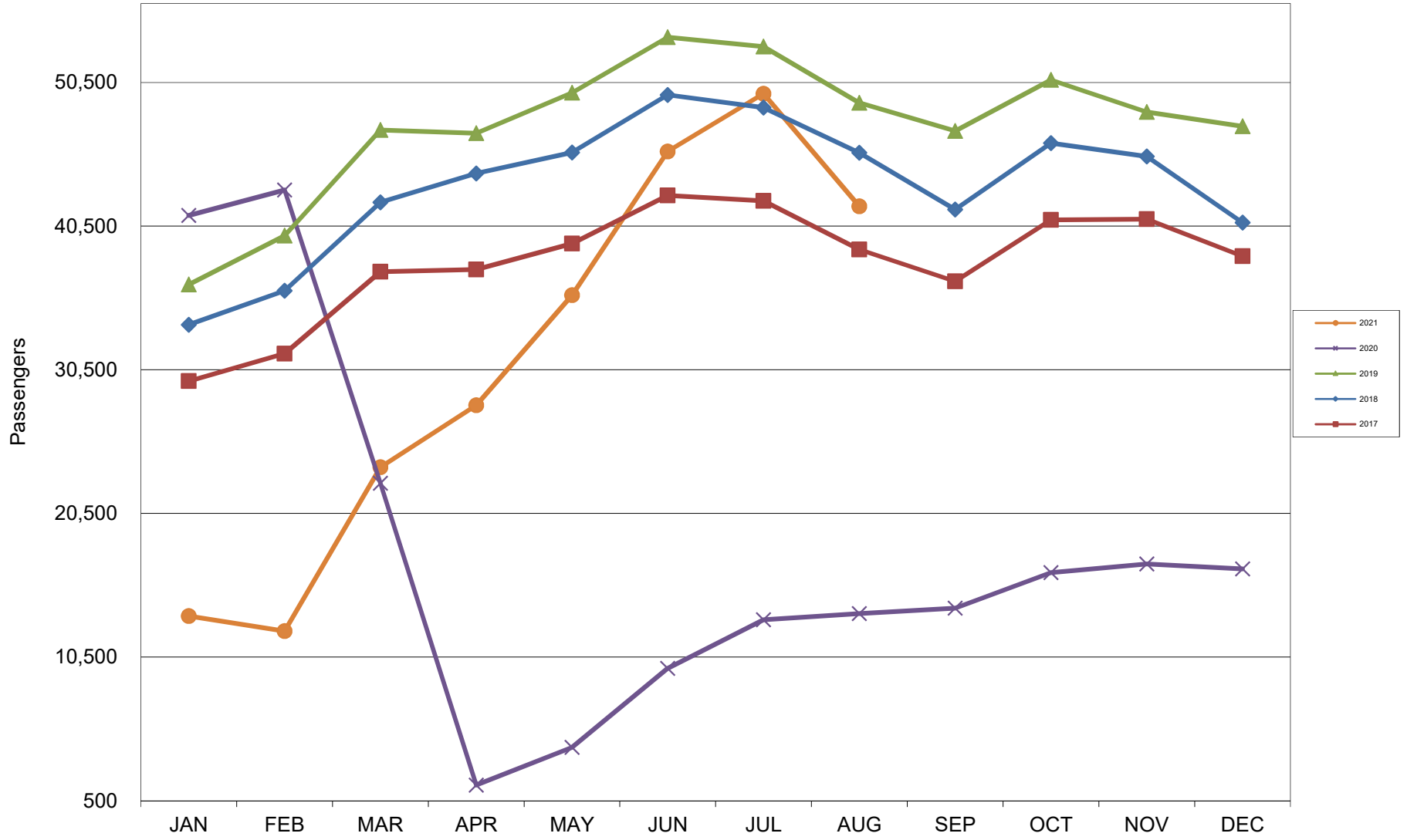
AUSTIN PASSENGER TRAFFIC 5 Year Trend



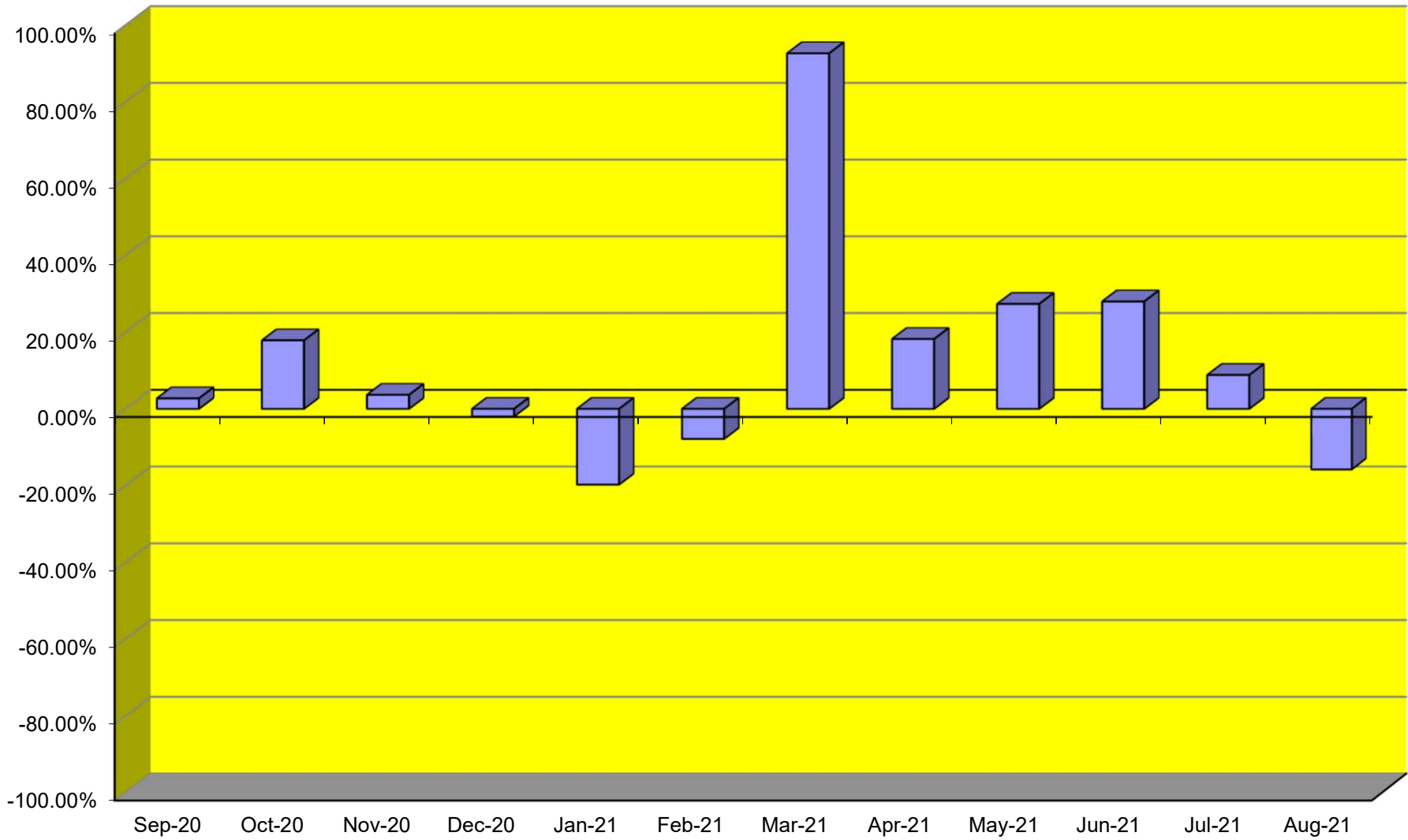
TOTAL CARGO POUNDAGE - AUSTIN, TEXAS



Average Daily Passengers



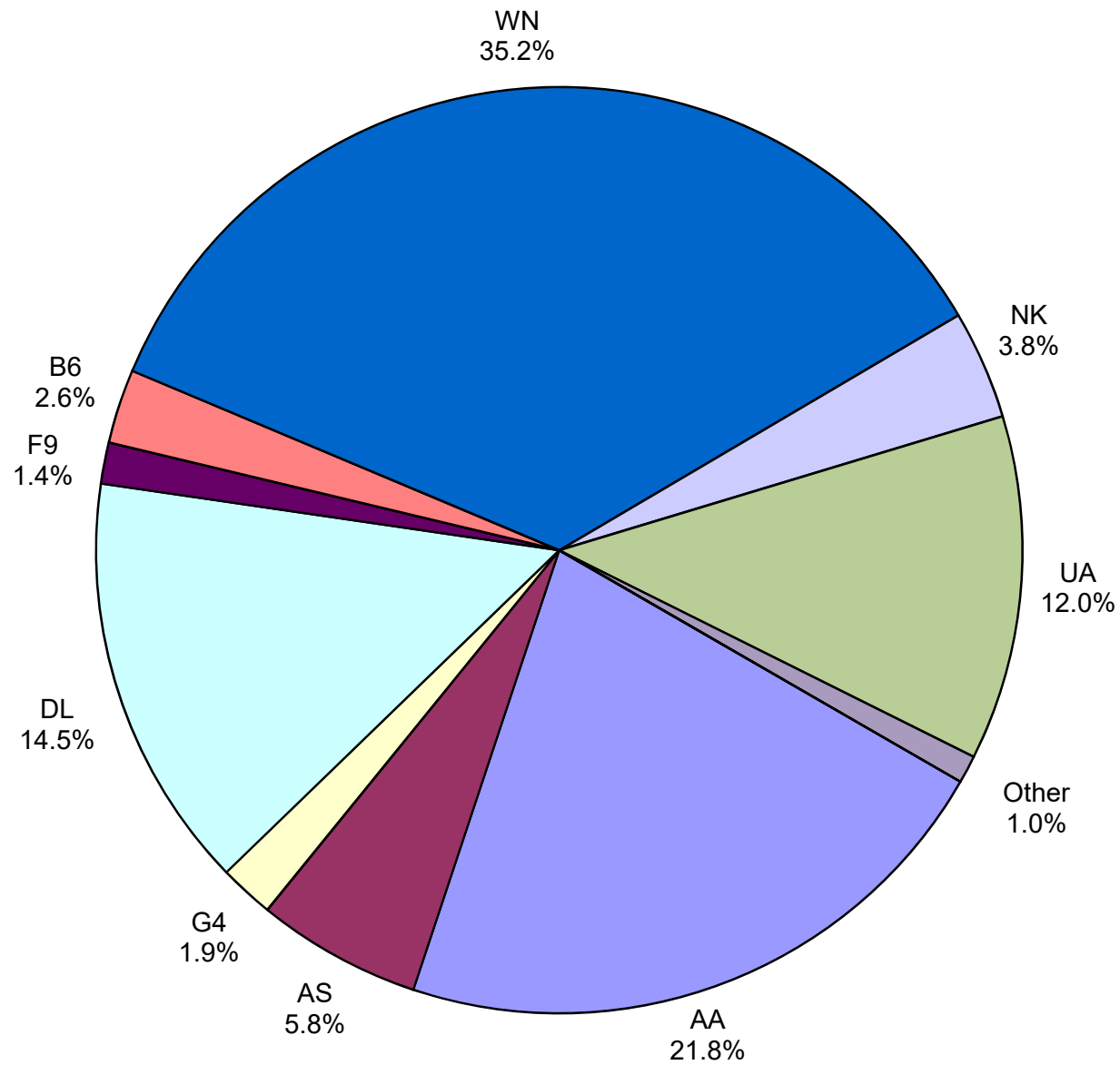
Monthly % Change in Average Daily Passengers



HISTORY OF INTERNATIONAL AIR CARGO



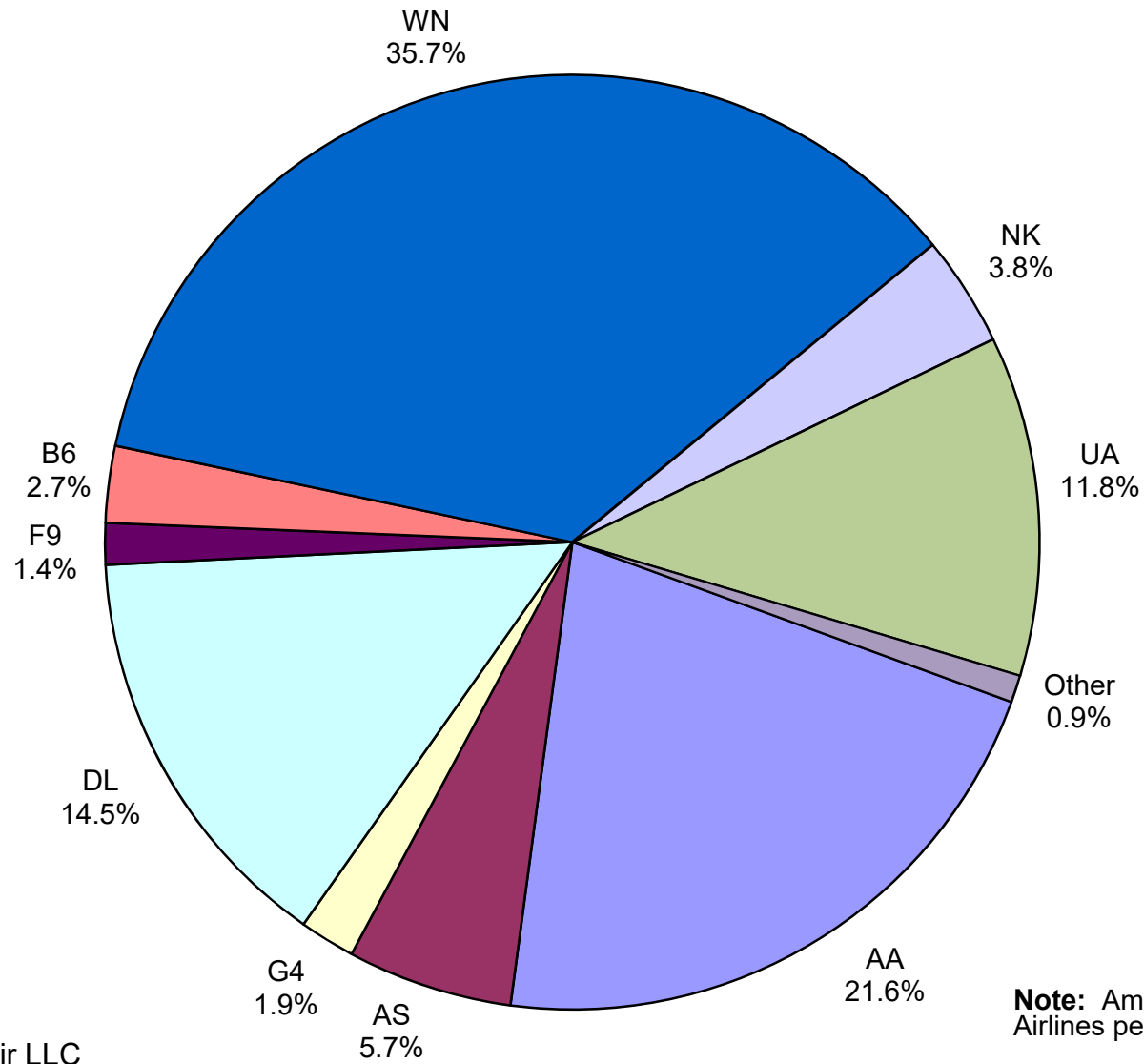
Total Passengers August 2021



Other: Aeromexico, Hawaiian Airlines, Inc., Sun Country and Swift Air LLC

Note: American, Delta and United Airlines percentages include Affiliates.

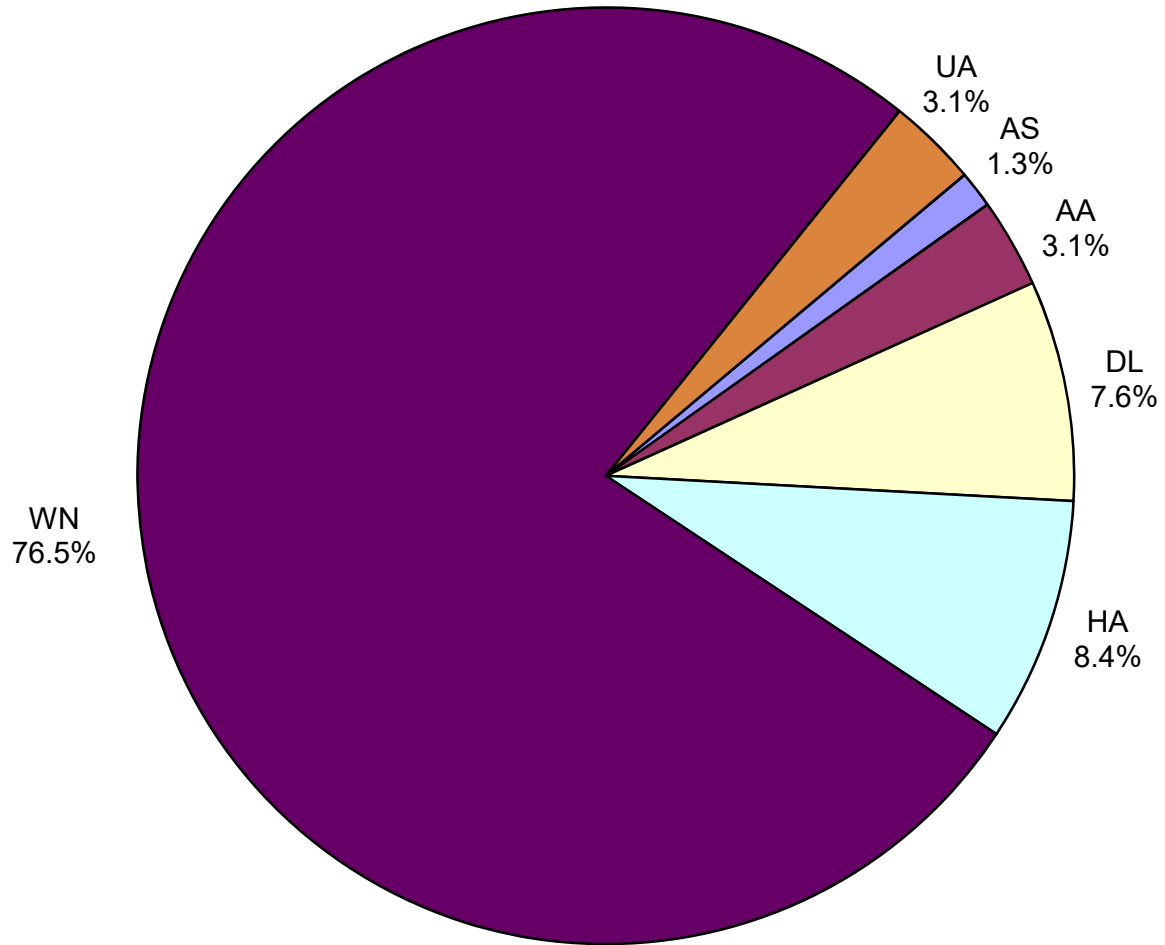
**All Passenger Carriers
Enplaned Revenue Passengers
August 2021**



Other: Aeromexico,
Hawaiian Airlines, Inc.,
Sun Country and Swift Air LLC

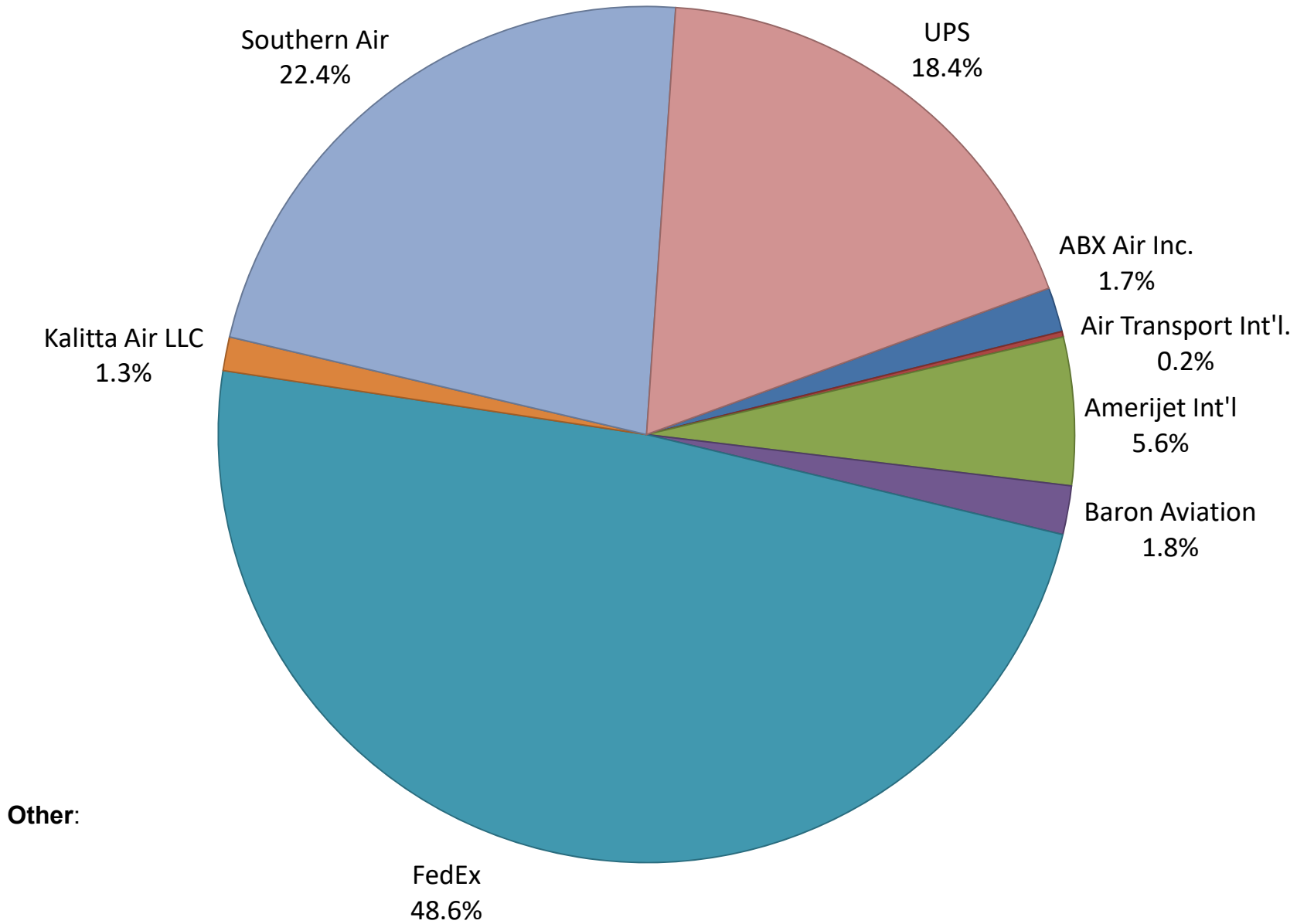
Note: American, Delta and United
Airlines percentages include Affiliates.

**AUS Belly Freight Market Shares
August 2021**

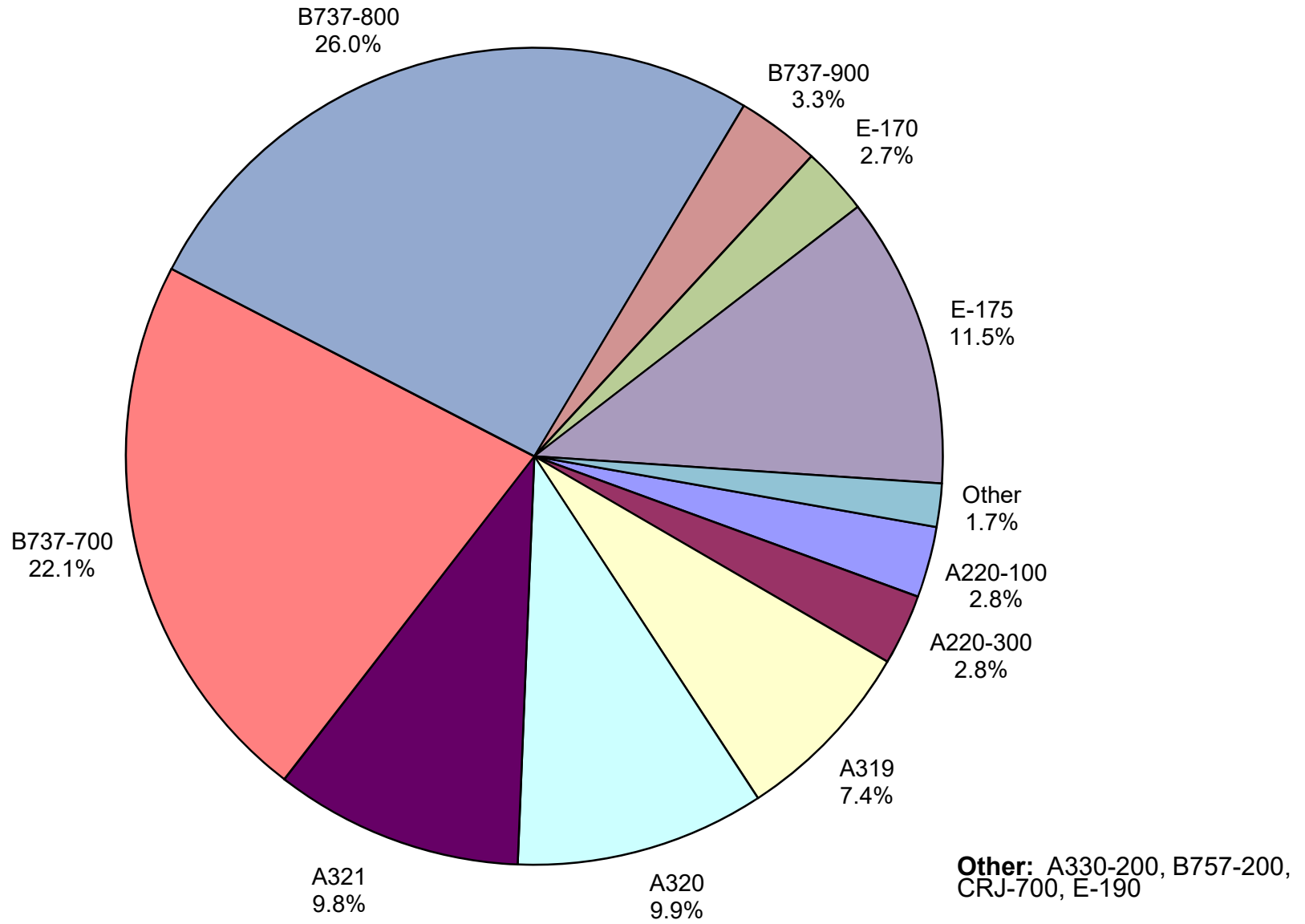


Other =

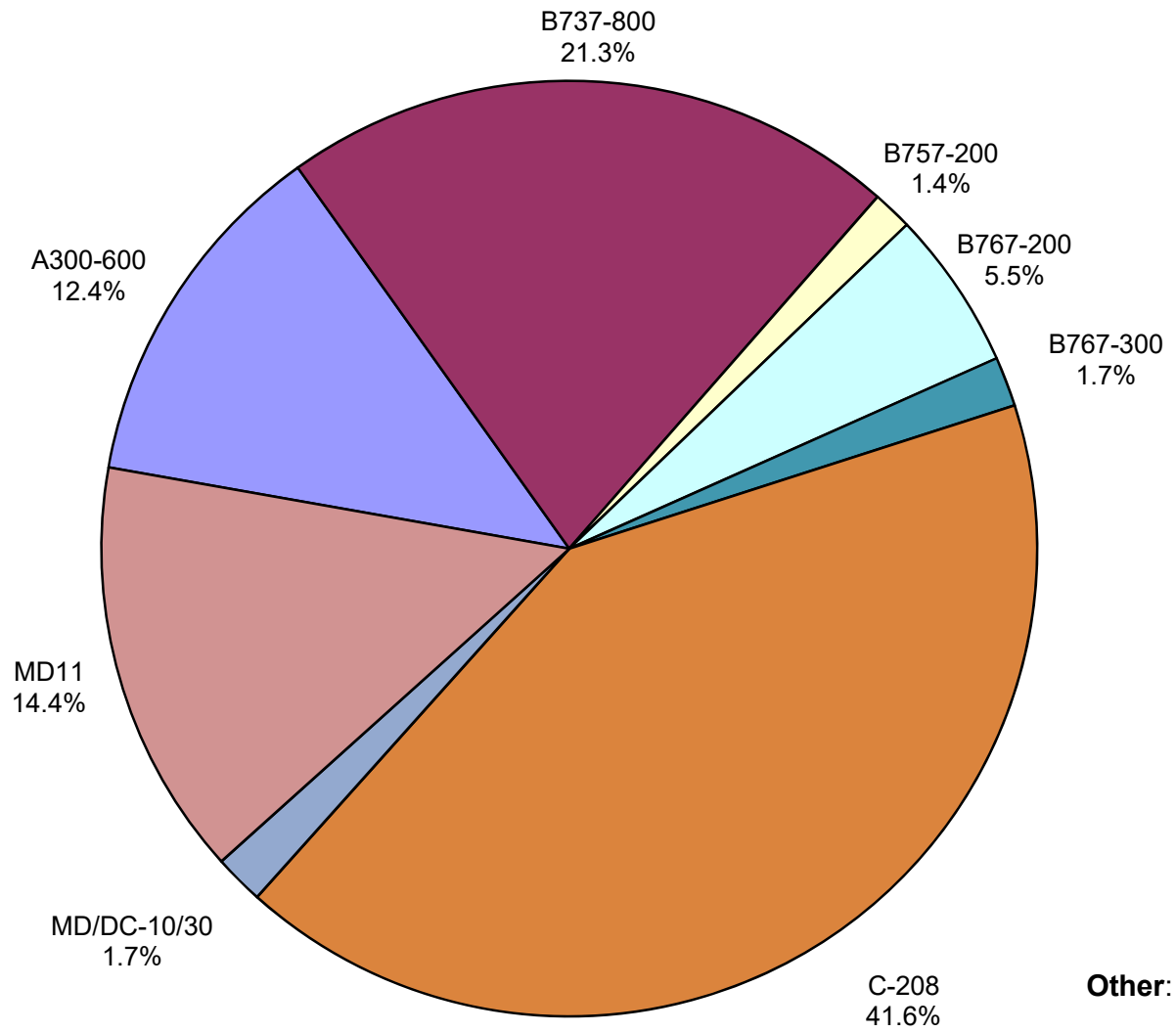
Air Cargo Market Share August 2021



AUS Scheduled Passenger Aircraft Fleet Mix August 2021



**AUS Scheduled Cargo Aircraft Fleet Mix
August 2021**



Austin-Bergstrom International Airport

Passenger Detail Report - August, 2021

Company	Period				YTD				2021 Share	2020 Share	Share Diff
	8/2021	8/2020	Difference	Change	YTD 2021	YTD 2020	Difference	Change			
Aerovias de Mexico S.A. de C.V.	4,694	0	4,694	0.0	9,827	10,293	-466	-4.5	0.1	0.2	-0.1
Air Canada	0	0	0	0.0	0	10,317	-10,317	-100.0	0.0	0.2	-0.2
Alaska Airlines	74,598	20,359	54,239	266.4	407,970	181,532	226,438	124.7	5.3	4.0	1.3
Allegiant Air	24,846	9,029	15,817	175.2	135,836	63,012	72,824	115.6	1.8	1.4	0.4
American Airlines	282,556	87,942	194,614	221.3	1,697,769	913,004	784,765	86.0	22.2	20.2	2.0
British Airways	0	0	0	0.0	0	29,217	-29,217	-100.0	0.0	0.6	-0.6
Delta Air Lines	188,735	45,264	143,471	317.0	1,077,234	575,740	501,494	87.1	14.1	12.7	1.4
Deutsche Lufthansa AG	0	0	0	0.0	0	15,883	-15,883	-100.0	0.0	0.4	-0.4
Frontier Airlines	18,690	11,183	7,507	67.1	141,651	155,886	-14,235	-9.1	1.9	3.4	-1.5
Hawaiian Airlines Inc	4,285	0	4,285	0.0	22,678	0	22,678	0.0	0.3	0.0	0.3
JetBlue Airways	33,668	9,987	23,681	237.1	277,818	141,912	135,906	95.8	3.6	3.1	0.5
Miami Air International Pre Bankruptcy	0	0	0	0.0	0	121	-121	-100.0	0.0	0.0	0.0
Norwegian Air UK LTD	0	0	0	0.0	0	3,474	-3,474	-100.0	0.0	0.1	-0.1
Southwest Airlines	456,818	149,457	307,361	205.7	2,610,314	1,522,783	1,087,531	71.4	34.1	33.7	0.4
Spirit Airlines	49,320	37,080	12,240	33.0	357,685	315,823	41,862	13.3	4.7	7.0	-2.3
Sun Country Airlines	3,417	1,998	1,419	71.0	13,959	6,397	7,562	118.2	0.2	0.1	0.1
Swift Air	180	0	180	0.0	1,406	928	478	51.5	0.0	0.0	0.0
United Airlines	156,263	47,176	109,087	231.2	897,815	575,803	322,012	55.9	11.7	12.7	-1.0
VivaAerobus	0	0	0	0.0	0	197	-197	-100.0	0.0	0.0	0.0
Report Totals	1,298,070	419,475	878,595	209.5%	7,651,962	4,522,322	3,129,640	69.2%	100.0%	99.8%	

Statistics Included in Report

Domestic Passengers: Enplaned Revenue, Deplaned Revenue, Enplaned Non-Revenue, Deplaned Non-Revenue

International Passengers: Enplaned Revenue, Deplaned Revenue, Enplaned Non-Revenue, Deplaned Non-Revenue

International Pre-Cleared Passengers: Enplaned Revenue, Deplaned Revenue, Enplaned Non-Revenue, Deplaned Non-Revenue

South Terminal Domestic Passengers: Enplaned Revenue, Deplaned Revenue, Enplaned Non-Revenue, Deplaned Non-Revenue

Austin-Bergstrom International Airport

Summary Landings Report

Landing Type: Total

Month	2021		2020		2019		% Change 2021- 2020		% Change 2020- 2019	
	Count	Weight	Count	Weight	Count	Weight	Count	Weight	Count	Weight
January	2,839	399,216,719	5,762	812,175,948	5,348	733,746,679	-50.73%	-50.85%	7.74%	10.69%
February	2,194	303,710,832	5,382	764,833,023	5,040	692,708,930	-59.23%	-60.29%	6.79%	10.41%
March	4,076	547,982,160	5,278	742,099,772	5,964	825,483,911	-22.77%	-26.16%	-11.50%	-10.10%
April	4,345	589,843,731	1,884	264,508,162	5,899	815,621,798	130.63%	123.00%	-68.06%	-67.57%
May	5,035	685,565,245	1,608	223,266,578	6,294	881,747,150	213.12%	207.06%	-74.45%	-74.68%
June	5,854	791,280,681	2,119	293,669,395	6,322	890,410,020	176.26%	169.45%	-66.48%	-67.02%
July	6,479	867,075,858	3,401	458,639,882	6,551	915,103,306	90.50%	89.05%	-48.08%	-49.88%
August	6,460	863,918,499	3,390	473,872,571	6,447	906,499,773	90.56%	82.31%	-47.42%	-47.73%
September	0	0	2,791	378,925,681	6,020	848,899,951	-100.00%	-100.00%	-53.64%	-55.36%
October	0	0	2,972	409,225,230	6,459	916,700,076	-100.00%	-100.00%	-53.99%	-55.36%
November	0	0	3,157	438,563,290	5,924	836,527,780	-100.00%	-100.00%	-46.71%	-47.57%
December	0	0	3,126	431,926,302	6,078	848,973,148	-100.00%	-100.00%	-48.57%	-49.12%
Totals For Selected Period	37,282	5,048,593,725	28,824	4,033,065,331	47,865	6,661,321,567	29.34%	25.18%	-39.78%	-39.46%
Yearly Totals	37,282	5,048,593,725	40,870	5,691,705,834	72,346	10,112,422,522	-8.78%	-11.30%	-43.51%	-43.72%