

**Austin-Bergstrom International Airport
Aviation Activity Report
Calendar Year 2020 vs 2019**

Combined Terminals

	9/2020	9/2019	Percent Change	1/2020 - 9/2020	1/2019 - 9/2019	Percent Change
ABIA						
Total Passenger Activity						
Domestic Enplaned Revenue	192,932	621,563	-68.96%	2,232,754	5,692,221	-60.78%
Domestic Deplaned Revenue	193,886	627,856	-69.12%	2,245,769	5,693,311	-60.55%
International Enplaned Revenue	0	16,469	-100.00%	32,294	165,889	-80.53%
International Deplaned Revenue	0	16,971	-100.00%	35,271	171,339	-79.41%
Domestic Enplaned Non-Revenue	6,496	12,930	-49.76%	75,172	127,127	-40.87%
Domestic Deplaned Non-Revenue	6,373	12,363	-48.45%	70,611	121,865	-42.06%
International Enplaned Non-Revenue	0	110	-100.00%	495	1,247	-60.30%
International Deplaned Non-Revenue	0	152	-100.00%	428	1,170	-63.42%
Intl Enplaned Pre-Cleared Revenue	0	4,302	-100.00%	5,483	32,249	-83.00%
Intl Deplaned Pre-Cleared Revenue	0	4,255	-100.00%	4,626	31,788	-85.45%
Intl Enplaned Pre-Cleared Non-Revenue	0	68	-100.00%	108	397	-72.80%
Intl Deplaned Pre-Cleared Non-Revenue	0	50	-100.00%	100	401	-75.06%
South Terminal Domestic Enplaned Revenue	8,483	48,153	-82.38%	115,923	402,524	-71.20%
South Terminal Domestic Deplaned Revenue	8,749	48,110	-81.81%	119,175	403,718	-70.48%
South Terminal Domestic Enplaned Non-Revenue	57	175	-67.43%	579	1,321	-56.17%
South Terminal Domestic Deplaned Non-Revenue	61	183	-66.67%	571	1,636	-65.10%
ABIA Passenger Totals	417,037	1,413,710	-70.50	4,939,359	12,848,203	-61.56
<i>ABIA Enplaned Passenger Totals</i>	<i>207,968</i>	<i>703,770</i>	<i>-70.45</i>	<i>2,462,808</i>	<i>6,422,975</i>	<i>-61.66</i>
<i>ABIA Deplaned Passenger Totals</i>	<i>209,069</i>	<i>709,940</i>	<i>-70.55</i>	<i>2,476,551</i>	<i>6,425,228</i>	<i>-61.46</i>
<i>ABIA Domestic Passenger Totals</i>	<i>417,037</i>	<i>1,371,333</i>	<i>-69.59</i>	<i>4,860,554</i>	<i>12,443,723</i>	<i>-60.94</i>
<i>ABIA International Passenger Totals</i>	<i>0</i>	<i>42,377</i>	<i>-100.00</i>	<i>78,805</i>	<i>404,480</i>	<i>-80.52</i>

CURRENT PASSENGER RECORD = 1,643,016 RECORD SET = JULY 2019

Total Aircraft Operations

Air Carrier	5,314	11,829	-55.08%	61,173	105,756	-42.16%
Commuter & Air Taxi	1,249	1,360	-8.16%	9,557	11,709	-18.38%
Military	425	444	-4.28%	3,669	6,671	-45.00%
General Aviation						
Itinerant	2,757	3,881	-28.96%	24,315	31,180	-22.02%
Local	0	48	-100.00%	268	556	-51.80%
Total G.A.	2,757	3,929	-29.83	24,583	31,736	-22.54
Total Operations	9,745	17,562	-44.51	98,982	155,872	-36.50

**Austin-Bergstrom International Airport
Aviation Activity Report
Calendar Year 2020 vs 2019**

By Terminal

	9/2020	9/2019	Percent Change	1/2020 - 9/2020	1/2019 - 9/2019	Percent Change
<u>Barbara Jordan Terminal (BJT)</u>						
Passenger Activity						
Domestic Enplaned Revenue	192,932	621,563	-68.96%	2,232,754	5,692,221	-60.78%
Domestic Deplaned Revenue	193,886	627,856	-100.00%	2,245,769	5,693,311	-80.53%
International Enplaned Revenue	0	16,469	-100.00%	32,294	165,889	-79.41%
International Deplaned Revenue	0	16,971	-100.00%	35,271	171,339	-79.41%
Domestic Enplaned Non-Revenue	6,496	12,930	-49.76%	75,172	127,127	-40.87%
Domestic Deplaned Non-Revenue	6,373	12,363	-48.45%	70,611	121,865	-42.06%
International Enplaned Non-Revenue	0	110	-100.00%	495	1,247	-60.30%
International Deplaned Non-Revenue	0	152	-100.00%	428	1,170	-63.42%
Intl Enplaned Pre-Cleared Revenue	0	4,302	-100.00%	5,483	32,249	-83.00%
Intl Deplaned Pre-Cleared Revenue	0	4,255	-100.00%	4,626	31,788	-85.45%
Intl Enplaned Pre-Cleared Non-Revenue	0	68	-100.00%	108	397	-72.80%
Intl Deplaned Pre-Cleared Non-Revenue	0	50	-100.00%	100	401	-75.06%
Barbara Jordan Terminal Passenger Totals	399,687	1,317,089	-69.65	4,703,111	12,039,004	-60.93
<i>BJT Enplaned Passenger Totals</i>	<i>199,428</i>	<i>655,442</i>	<i>-69.57</i>	<i>2,346,306</i>	<i>6,019,130</i>	<i>-61.02</i>
<i>BJT Deplaned Passenger Totals</i>	<i>200,259</i>	<i>661,647</i>	<i>-69.73</i>	<i>2,356,805</i>	<i>6,019,874</i>	<i>-60.85</i>
<i>BJT Domestic Passenger Totals</i>	<i>399,687</i>	<i>1,274,712</i>	<i>-68.64</i>	<i>4,624,306</i>	<i>11,634,524</i>	<i>-60.25</i>
<i>BJT International Passenger Totals</i>	<i>0</i>	<i>42,377</i>	<i>-100.00</i>	<i>78,805</i>	<i>404,480</i>	<i>-80.52</i>
<u>South Terminal (ST)</u>						
Passenger Activity						
South Terminal Domestic Enplaned Revenue	8,483	48,153	-82.38%	115,923	402,524	-71.20%
South Terminal Domestic Deplaned Revenue	8,749	48,110	-81.81%	119,175	403,718	-70.48%
South Terminal Domestic Enplaned Non-Revenue	57	175	-67.43%	579	1,321	-56.17%
South Terminal Domestic Deplaned Non-Revenue	61	183	-66.67%	571	1,636	-65.10%
South Terminal Passenger Totals	17,350	96,621	-82.04	236,248	809,199	-70.80
<i>ST Enplaned Passenger Totals</i>	<i>8,540</i>	<i>48,328</i>	<i>-82.33</i>	<i>116,502</i>	<i>403,845</i>	<i>-71.15</i>
<i>ST Deplaned Passenger Totals</i>	<i>8,810</i>	<i>48,293</i>	<i>-81.76</i>	<i>119,746</i>	<i>405,354</i>	<i>-70.46</i>

**Austin-Bergstrom International Airport
Aviation Activity Report
Calendar Year 2020 vs 2019**

	9/2020	9/2019	Percent Change	1/2020 - 9/2020	1/2019 - 9/2019	Percent Change
Total Cargo Activity						
Mail						
Domestic Enplaned Mail	174,378	184,833	-5.66%	1,556,986	1,677,211	-7.17%
Domestic Deplaned Mail	424,809	652,539	-34.90%	3,894,010	5,908,977	-34.10%
International Enplaned Mail	0	0	0.00%	0	0	0.00%
International Deplaned Mail	0	0	0.00%	0	110,830	-100.00%
South Terminal-Domestic Enplaned Mail	0	0	0.00%	0	0	0.00%
South Terminal-Domestic Deplaned Mail	0	0	0.00%	0	0	0.00%
Mail Totals	599,187	837,372	-28.44	5,450,996	7,697,018	-29.18
Cargo						
Domestic Enplaned Cargo	8,041,819	4,272,612	88.22%	55,922,064	42,839,951	30.54%
Domestic Deplaned Cargo	12,193,435	6,119,153	99.27%	78,692,662	58,922,336	33.55%
International Enplaned Cargo	20,253	357,730	-94.34%	1,087,851	3,392,880	-67.94%
International Deplaned Cargo	7,478	227,370	-96.71%	532,923	2,554,758	-79.14%
South Terminal-Domestic Enplaned Cargo	0	0	0.00%	0	0	0.00%
South Terminal-Domestic Deplaned Cargo	0	0	0.00%	0	0	0.00%
Cargo Totals	20,262,985	10,976,865	84.60	136,235,500	107,709,925	26.48
Belly Freight						
Domestic Enplaned Belly Freight	182,497	255,406	-28.55%	2,081,679	2,835,670	-26.59%
Domestic Deplaned Belly Freight	310,197	392,292	-20.93%	3,198,981	4,643,454	-31.11%
International Enplaned Belly Freight	0	428,916	-100.00%	1,035,039	3,017,467	-65.70%
International Deplaned Belly Freight	0	550,958	-100.00%	2,056,175	5,502,184	-62.63%
South Terminal-Domestic Enplaned Belly Frght	0	0	0.00%	0	0	0.00%
South Terminal-Domestic Deplaned Belly Frght	0	0	0.00%	0	0	0.00%
Belly Freight Totals	492,694	1,627,572	-69.73	8,371,874	15,998,775	-47.67
Cargo Totals (Mail, Cargo, Belly Freight)	21,354,866	13,441,809	58.87	150,058,370	131,405,718	14.19
<i>Enplaned Cargo Totals</i>	<i>8,418,947</i>	<i>5,499,497</i>	<i>53.09</i>	<i>61,683,619</i>	<i>53,763,179</i>	<i>14.73</i>
<i>Deplaned Cargo Totals</i>	<i>12,935,919</i>	<i>7,942,312</i>	<i>62.87</i>	<i>88,374,751</i>	<i>77,642,539</i>	<i>13.82</i>
<i>Domestic Cargo Totals</i>	<i>21,327,135</i>	<i>11,876,835</i>	<i>79.57</i>	<i>145,346,382</i>	<i>116,827,599</i>	<i>24.41</i>
<i>International Cargo Totals</i>	<i>27,731</i>	<i>1,564,974</i>	<i>-98.23</i>	<i>4,711,988</i>	<i>14,578,119</i>	<i>-67.68</i>

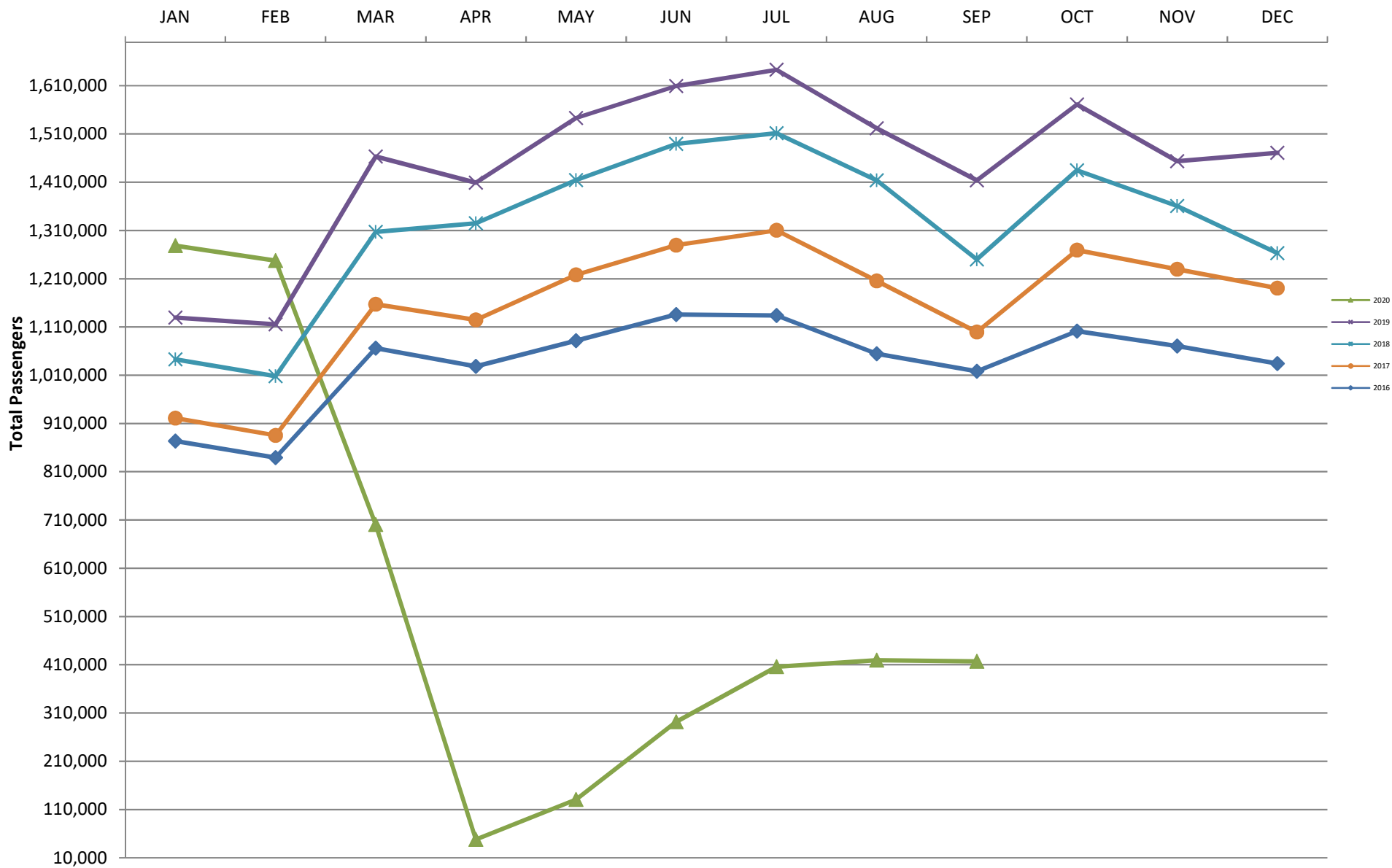
CURRENT CARGO RECORD = 40,215,518

RECORD SET = MARCH 2001

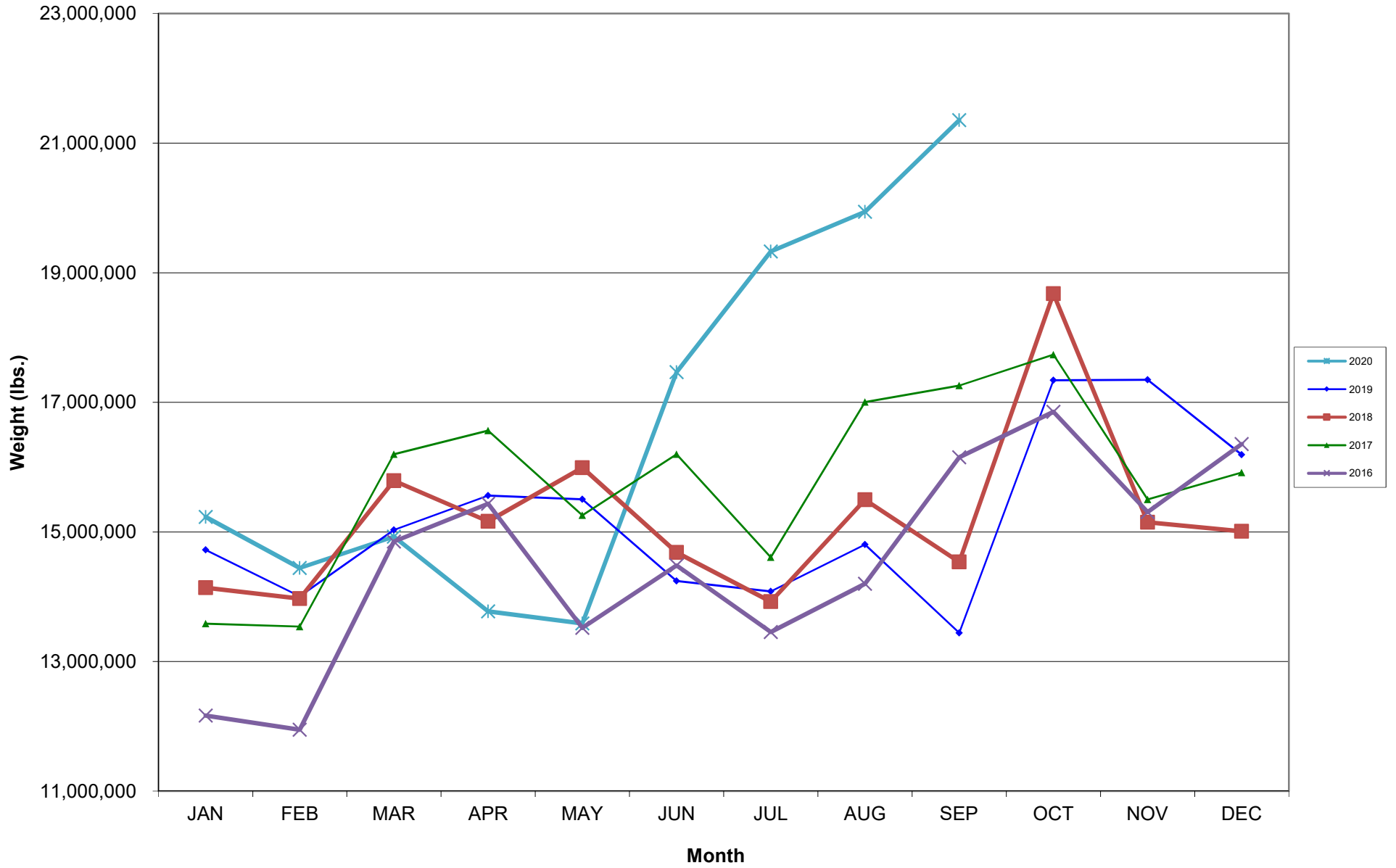
AUS – Airline Codes
September 2020

<u>Code</u>	<u>Carrier</u>
AS	Alaska Airlines, Inc.
G4	Allegiant Air, LLC
AA	American Airlines, Inc.
DL	Delta Air Lines
F9	Frontier Airlines, Inc.
B6	JetBlue Airways Corp.
WN	Southwest Airlines
NK	Spirit Airlines, Inc.
SY	Sun Country Airlines/MN Airlines LLC
UA	United Airlines, Inc.

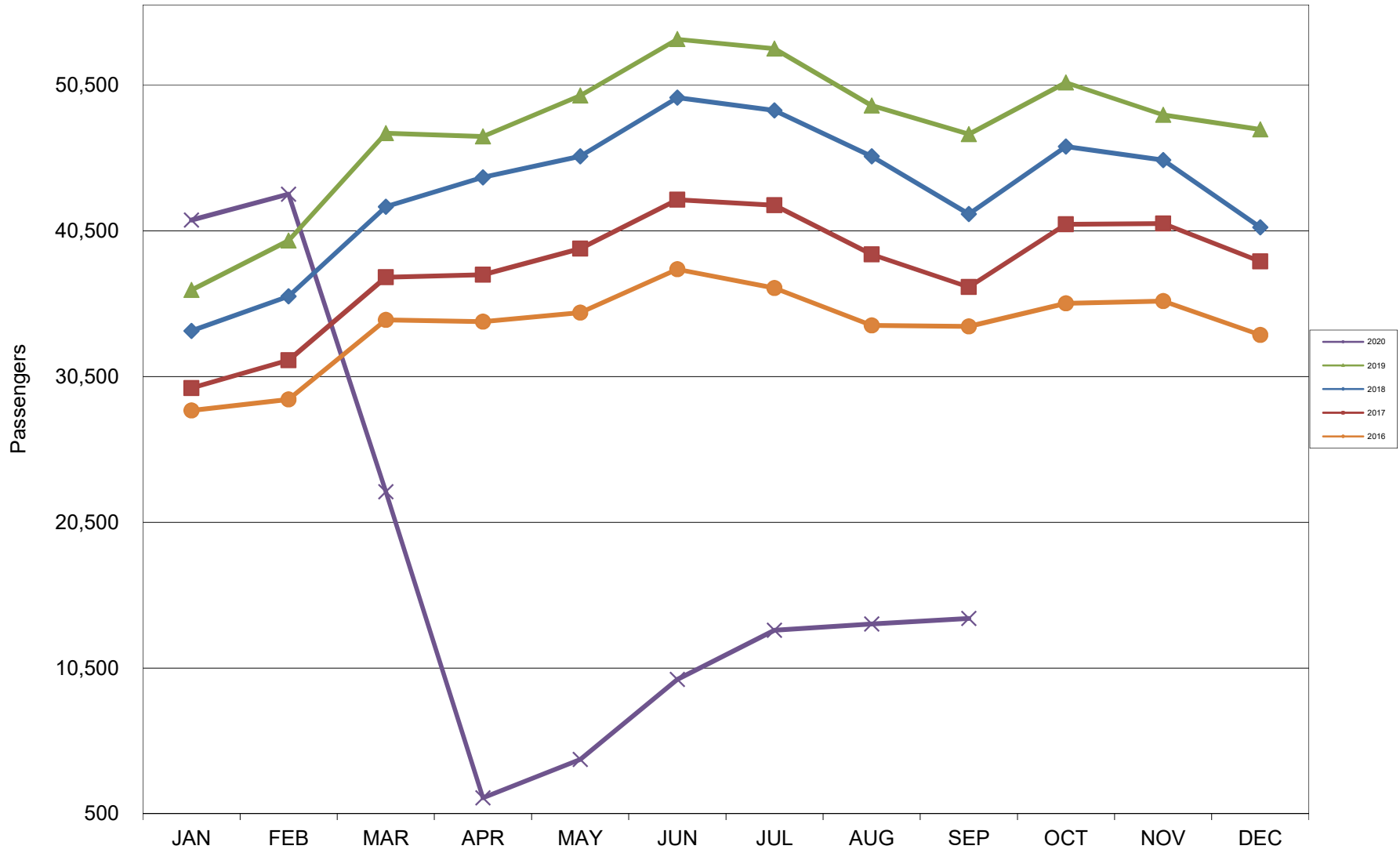
AUSTIN PASSENGER TRAFFIC 5 Year Trend



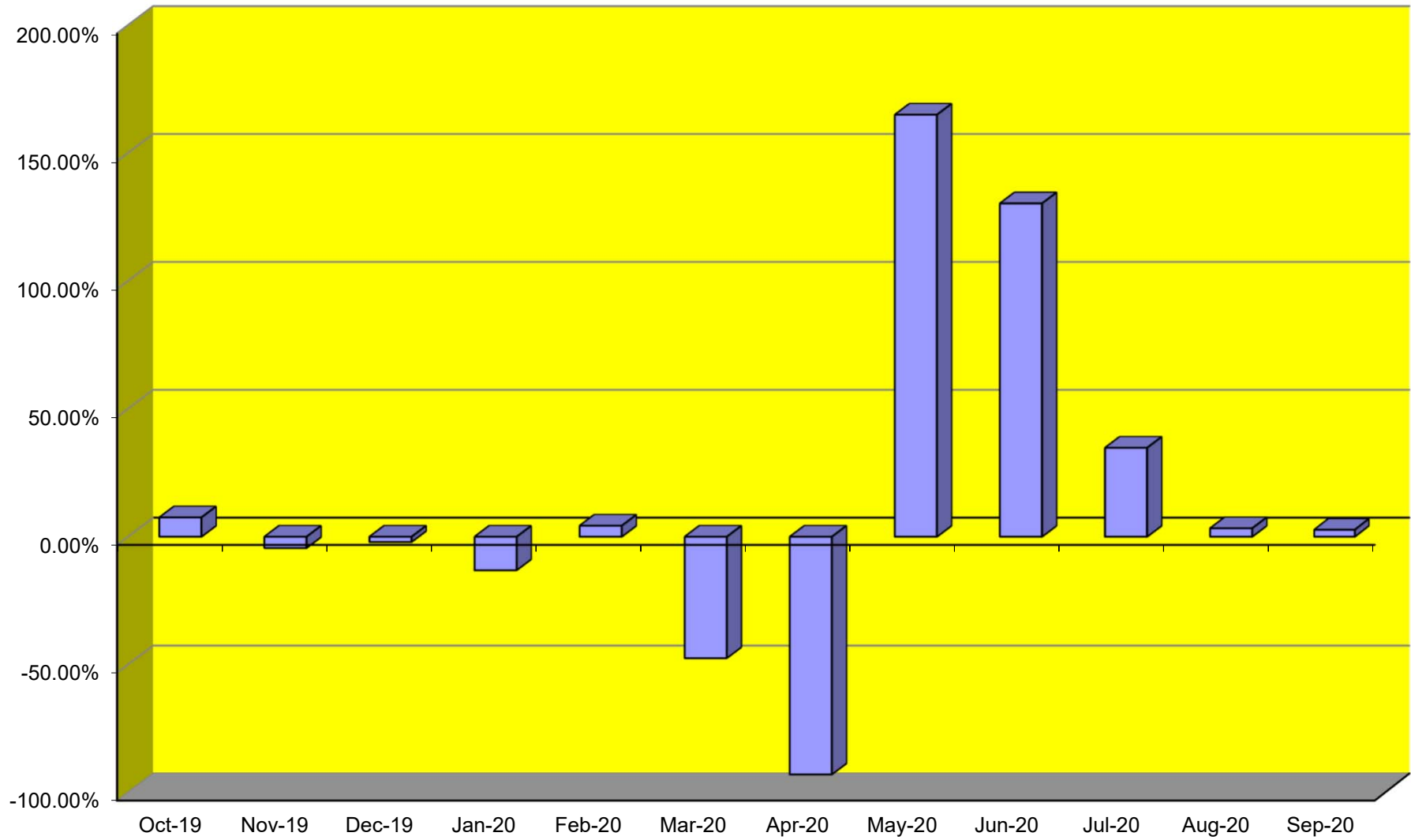
TOTAL CARGO POUNDAGE - AUSTIN, TEXAS



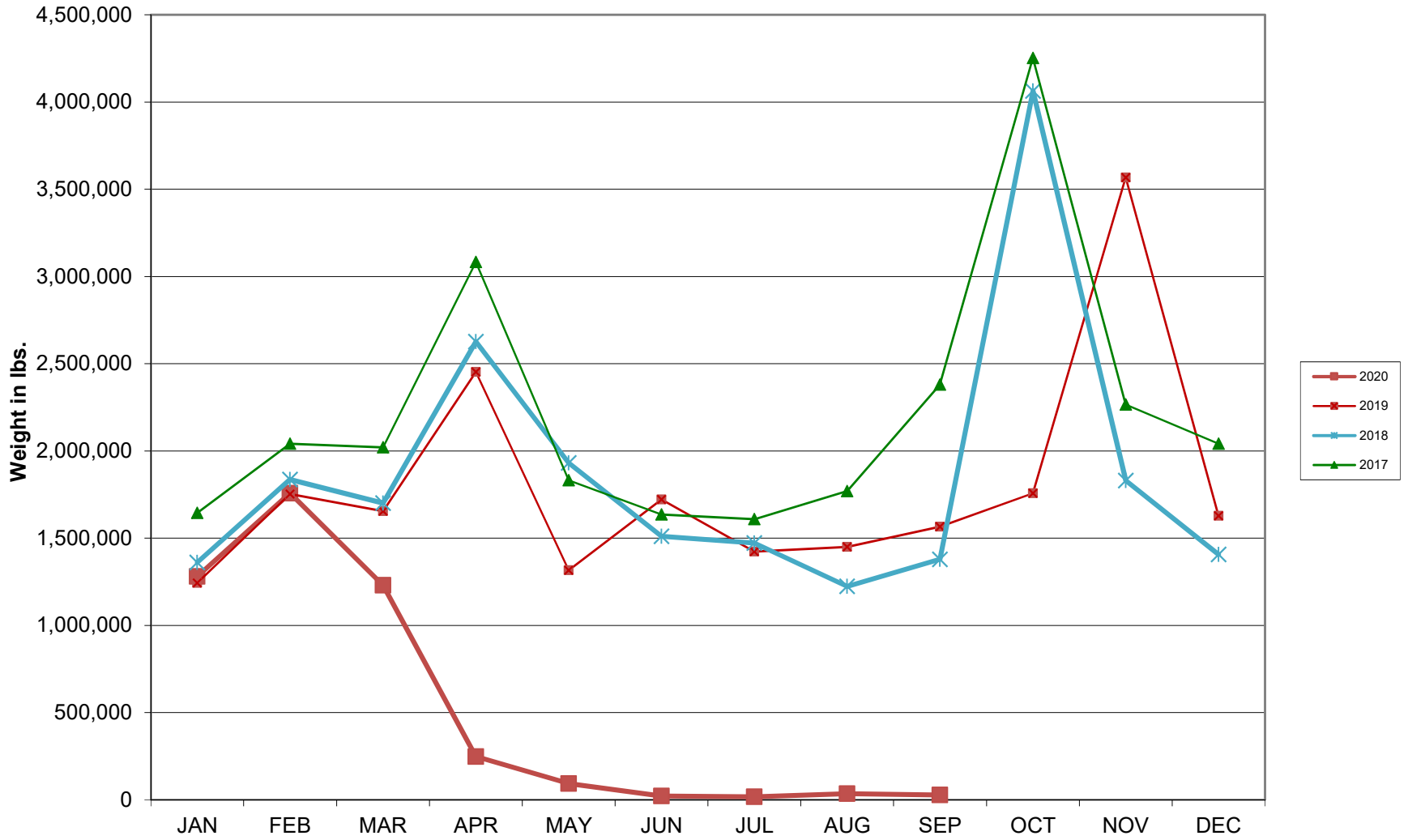
Average Daily Passengers



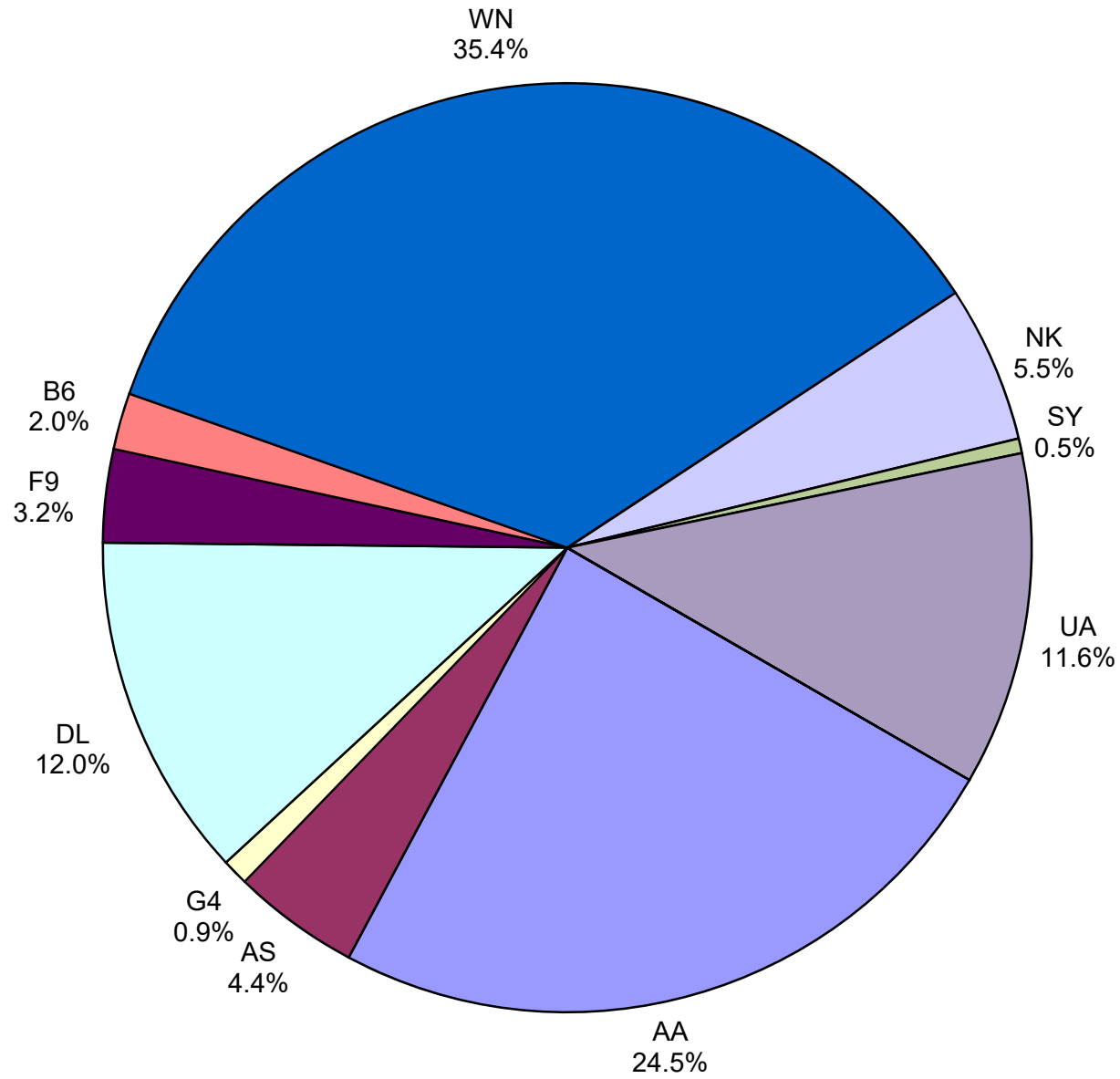
Monthly % Change in Average Daily Passengers



HISTORY OF INTERNATIONAL AIR CARGO



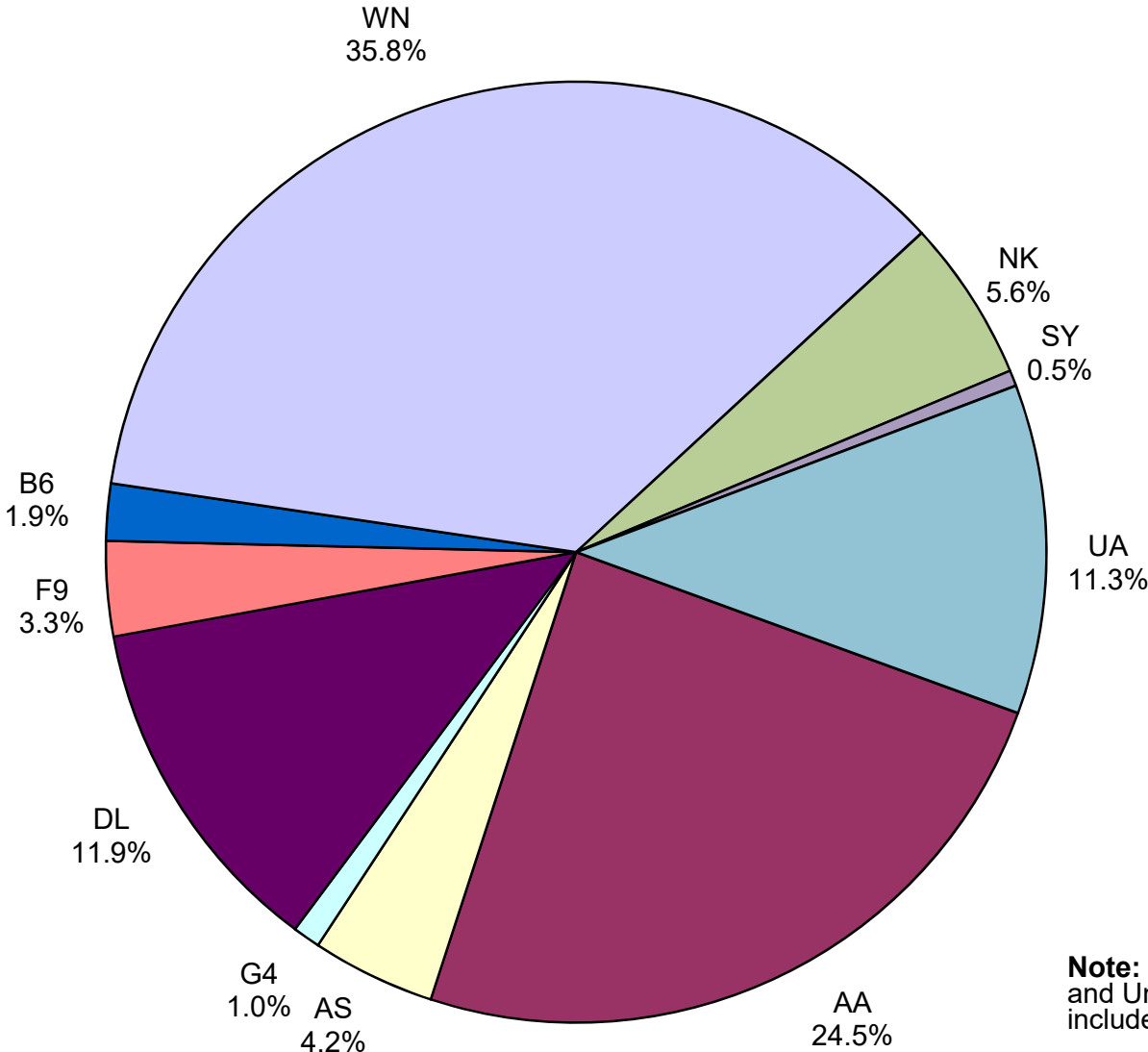
**Total Passengers
September 2020**



Other:

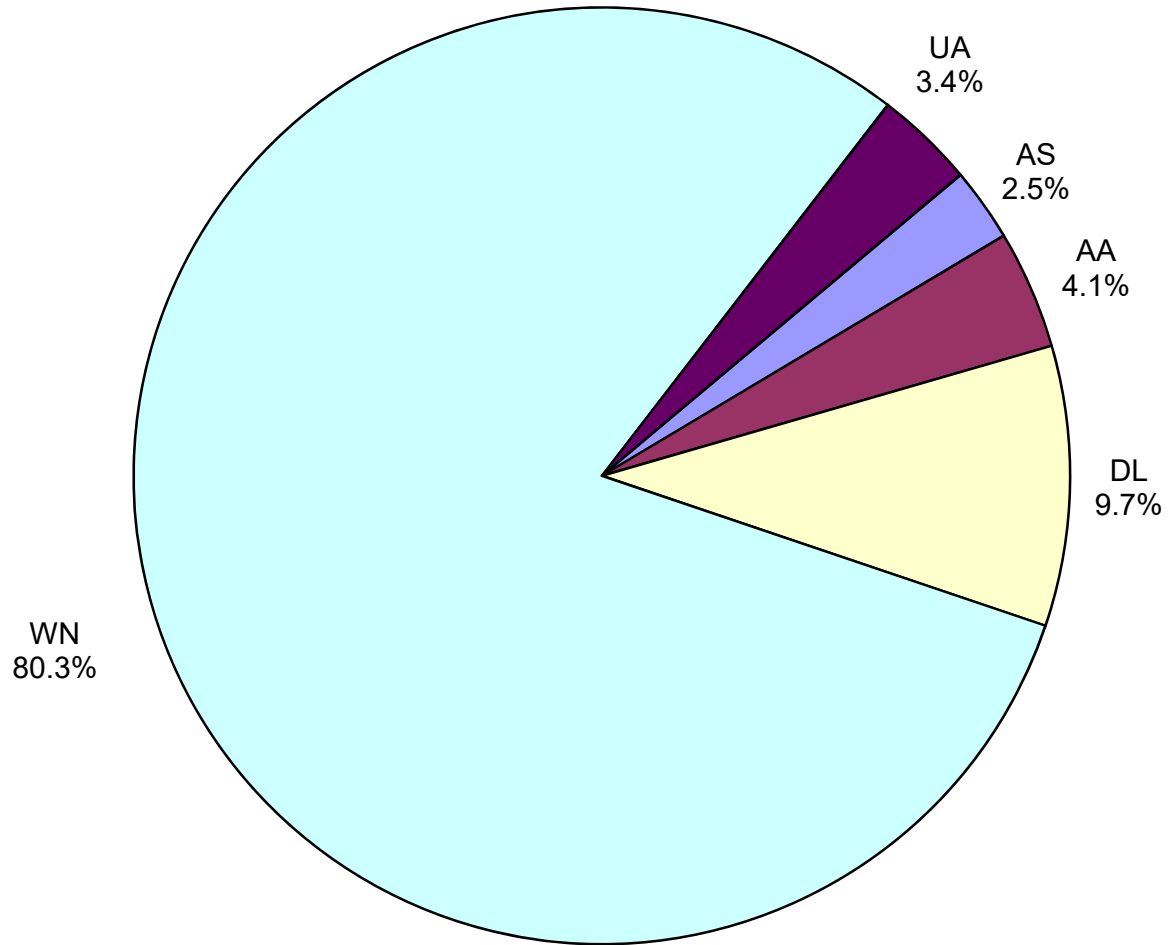
Note: American, Delta and United Airlines percentages include Affiliates.

**All Passenger Carriers
Enplaned Revenue Passengers
September 2020**



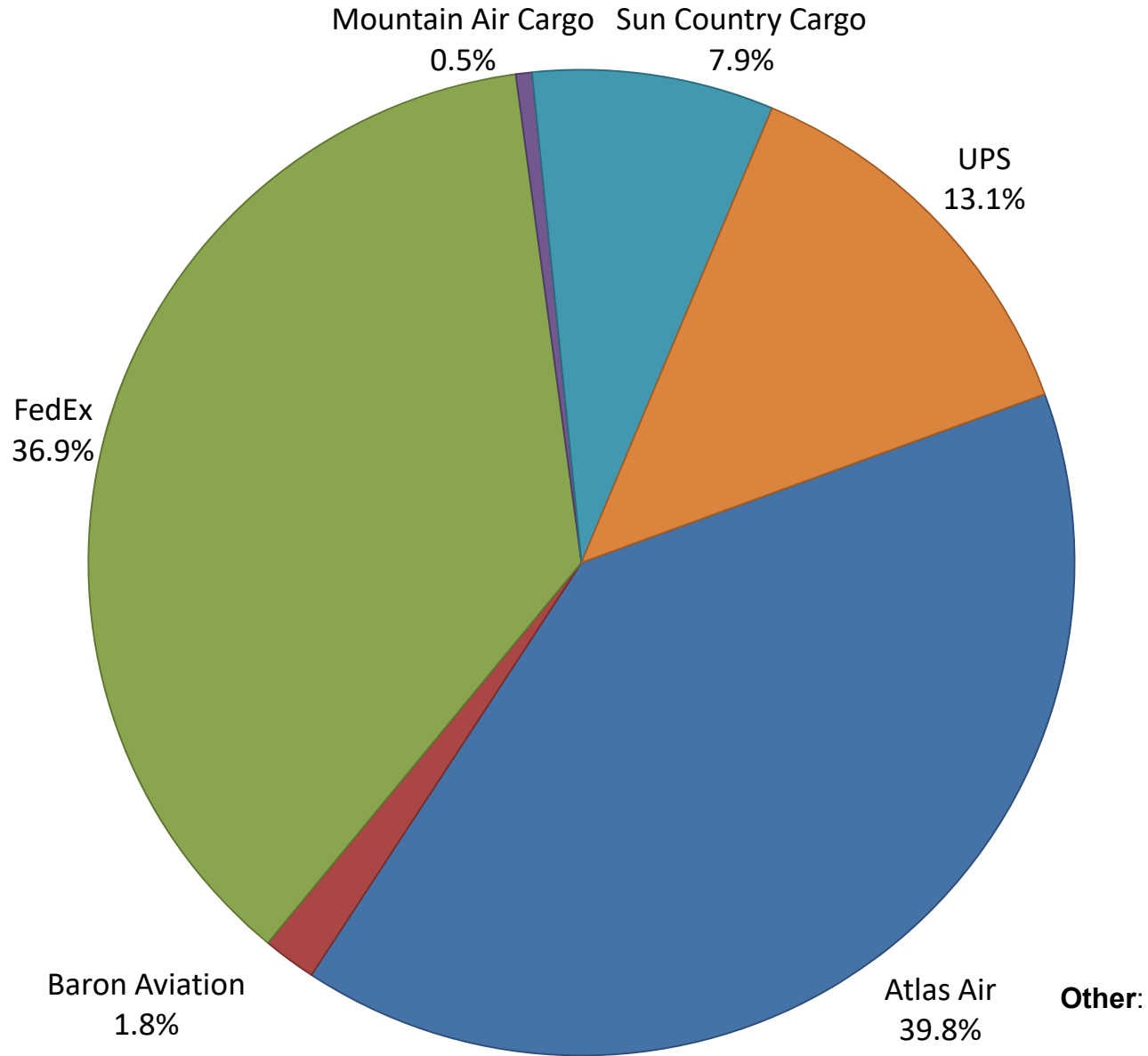
Note: American/US Airways, Delta and United Airlines percentages include Affiliates.

**AUS Belly Freight Market Shares
September 2020**

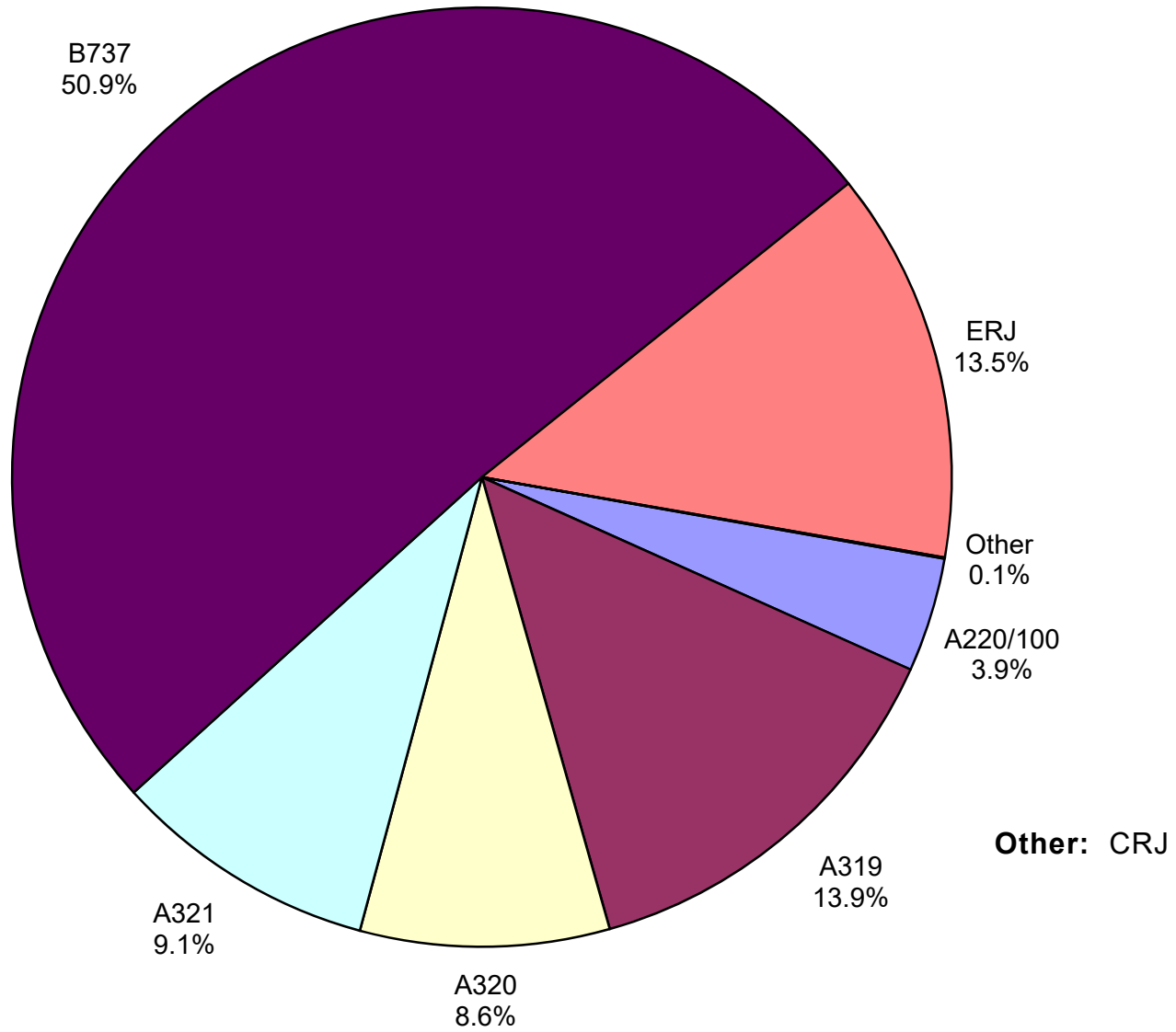


Other =

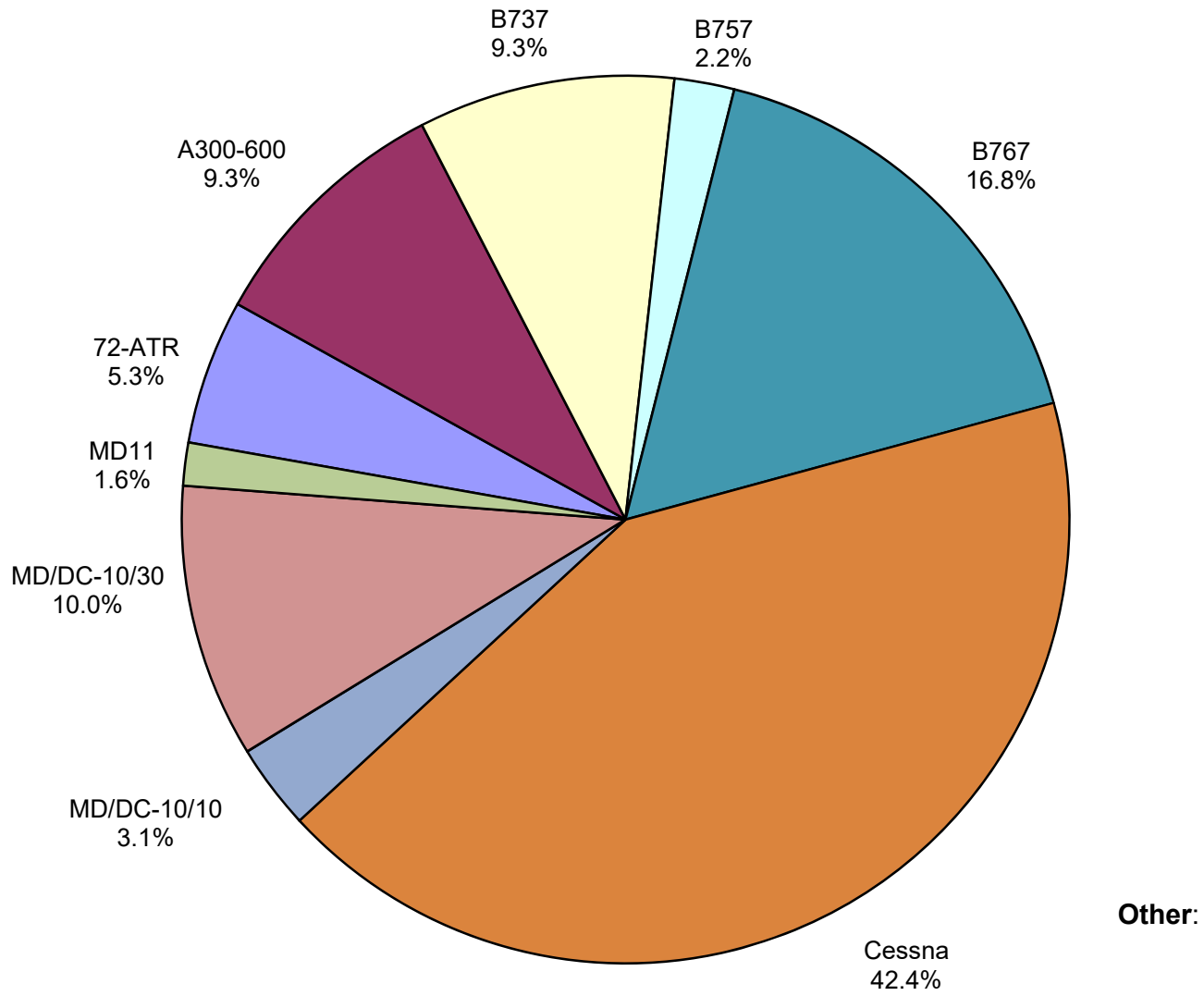
Air Cargo Market Share September 2020



**AUS Scheduled Passenger Aircraft Fleet Mix
September 2020**



**AUS Scheduled Cargo Aircraft Fleet Mix
September 2020**



Austin-Bergstrom International Airport

Pax Detail Report - September, 2020

Company	9/2020	9/2019	Difference	Change	YTD		Difference	Change	2020	2019	Share Diff
					YTD 2020	YTD 2019			Share	Share	
Aeroenlaces Nacionales, SA DE CV	0	0	0	0.0	197	0	197	0.0	0.0	0.0	0.0
Aerovias de Mexico S.A. de C.V. (DIP)	0	0	0	0.0	378	0	378	0.0	0.0	0.0	0.0
Aerovias de Mexico S.A. de C.V. Pre Bankruptcy	0	3,477	-3,477	-100.0	9,915	33,586	-23,671	-70.5	0.2	0.3	-0.1
Air Canada	0	6,551	-6,551	-100.0	10,317	54,218	-43,901	-81.0	0.2	0.4	-0.2
Air New Zealand Limited	0	0	0	0.0	0	302	-302	-100.0	0.0	0.0	0.0
Alaska Airlines INC	18,450	55,649	-37,199	-66.8	199,982	463,607	-263,625	-56.9	4.0	3.6	0.4
Allegiant Air LLC	3,845	3,123	722	23.1	66,857	148,476	-81,619	-55.0	1.4	1.2	0.2
American Airlines INC	102,054	254,604	-152,550	-59.9	1,015,058	2,286,568	-1,271,510	-55.6	20.6	17.8	2.8
British Airways PLC	0	14,629	-14,629	-100.0	29,217	142,418	-113,201	-79.5	0.6	1.1	-0.5
Concesionaria Vuela Compañía de Aviación, S.A.P.I.	0	0	0	0.0	0	434	-434	-100.0	0.0	0.0	0.0
Delta Air Lines	50,160	194,762	-144,602	-74.2	625,900	1,757,379	-1,131,479	-64.4	12.7	13.7	-1.0
Deutsche Lufthansa AG	0	8,139	-8,139	-100.0	15,883	42,405	-26,522	-62.5	0.3	0.3	0.0
Frontier Airlines INC	13,505	93,498	-79,993	-85.6	169,391	657,505	-488,114	-74.2	3.4	5.1	-1.7
JetBlue Airways Corporation	8,200	48,033	-39,833	-82.9	150,112	425,125	-275,013	-64.7	3.0	3.3	-0.3
Miami Air International INC Pre Bankruptcy	0	0	0	0.0	121	869	-748	-86.1	0.0	0.0	0.0
Norwegian Air UK LTD	0	7,450	-7,450	-100.0	3,474	55,600	-52,126	-93.8	0.1	0.4	-0.3
Scandinavian Airlines	0	0	0	0.0	0	423	-423	-100.0	0.0	0.0	0.0
Southwest Airlines	147,509	452,670	-305,161	-67.4	1,670,292	4,350,300	-2,680,008	-61.6	33.8	33.9	-0.1
Spirit Airlines Inc	22,808	69,734	-46,926	-67.3	338,631	541,708	-203,077	-37.5	6.9	4.2	2.7
Sun Country Airlines/MN Airlines LLC	2,135	3,499	-1,364	-39.0	8,532	29,188	-20,656	-70.8	0.2	0.2	0.0
Swift Air LLC	0	290	-290	-100.0	928	1,847	-919	-49.8	0.0	0.0	0.0
United Airlines INC	48,371	195,478	-147,107	-75.3	624,174	1,840,660	-1,216,486	-66.1	12.6	14.3	-1.7
Vacation Express	0	0	0	0.0	0	1,750	-1,750	-100.0	0.0	0.0	0.0
VIA Airlines, INC	0	0	0	0.0	0	3,218	-3,218	-100.0	0.0	0.0	0.0
WestJet	0	2,124	-2,124	-100.0	0	10,617	-10,617	-100.0	0.0	0.1	-0.1
Report Totals	417,037	1,413,710	-996,673	-70.5%	4,939,359	12,848,203	-7,908,844	-61.6%	100.0%	99.9%	

Statistics Included in Report

Domestic Passengers: Enplaned Revenue, Deplaned Revenue, Enplaned Non-Revenue, Deplaned Non-Revenue

International Passengers: Enplaned Revenue, Deplaned Revenue, Enplaned Non-Revenue, Deplaned Non-Revenue

International Pre-Cleared Passengers: Enplaned Revenue, Deplaned Revenue, Enplaned Non-Revenue, Deplaned Non-Revenue

South Terminal Domestic Passengers: Enplaned Revenue, Deplaned Revenue, Enplaned Non-Revenue, Deplaned Non-Revenue

Austin-Bergstrom International Airport

Summary Landings Report

Landing Type: Total

Month	2020		2019		2018		% Change 2020- 2019		% Change 2019- 2018	
	Count	Weight	Count	Weight	Count	Weight	Count	Weight	Count	Weight
January	5,762	812,175,948	5,348	733,746,679	5,086	688,923,110	7.98%	10.62%	4.78%	4.93%
February	5,382	764,833,023	5,040	692,708,930	4,706	637,500,756	8.41%	10.66%	7.66%	9.36%
March	5,278	742,099,772	5,964	825,483,911	5,643	760,648,260	-11.17%	-9.35%	5.38%	6.89%
April	1,884	264,508,162	5,899	815,621,798	5,797	793,367,736	-68.87%	-68.74%	-0.34%	0.56%
May	1,608	223,266,578	6,294	881,747,150	6,117	831,431,763	-76.11%	-76.59%	-1.13%	0.20%
June	2,119	293,669,395	6,322	890,410,020	6,211	852,438,818	-68.98%	-69.80%	-2.30%	-1.73%
July	3,401	458,639,882	6,551	915,103,306	6,346	869,502,671	-48.58%	-50.20%	-0.12%	0.54%
August	3,390	473,872,571	6,447	906,499,773	6,245	861,046,997	-46.77%	-46.57%	-0.96%	-0.55%
September	2,791	378,925,681	6,020	848,899,951	5,737	790,731,351	-54.77%	-56.54%	1.37%	2.73%
October	0	0	6,459	916,700,076	6,078	846,310,860	-100.00%	-100.00%	1.67%	2.68%
November	0	0	5,924	836,527,780	5,684	780,994,101	-100.00%	-100.00%	3.81%	4.20%
December	0	0	6,078	848,973,148	5,600	761,317,385	-100.00%	-100.00%	11.36%	13.06%
Totals For Selected Period	31,615	4,411,991,012	53,885	7,510,221,518	51,888	7,085,591,462	-41.33%	-41.25%	3.85%	5.99%
Yearly Totals	31,615	4,411,991,012	72,346	10,112,422,522	69,250	9,474,213,808	-56.30%	-56.37%	4.47%	6.74%