

**Austin-Bergstrom International Airport
Aviation Activity Report
Calendar Year 2019 vs 2018**

Combined Terminals

	10/2019	10/2018	Percent Change	1/2019 - 10/2019	1/2018 - 10/2018	Percent Change
ABIA						
Total Passenger Activity						
Domestic Enplaned Revenue	689,021	674,367	2.17	6,381,242	6,127,246	4.15
Domestic Deplaned Revenue	700,155	680,722	2.85	6,393,466	6,135,186	4.21
International Enplaned Revenue	16,516	13,678	20.75	182,405	166,667	9.44
International Deplaned Revenue	18,998	14,304	32.82	190,337	170,916	11.36
Domestic Enplaned Non-Revenue	14,237	14,099	0.98	141,364	147,945	-4.45
Domestic Deplaned Non-Revenue	13,284	13,470	-1.38	135,149	141,604	-4.56
International Enplaned Non-Revenue	138	104	32.69	1,385	1,251	10.71
International Deplaned Non-Revenue	317	103	207.77	1,487	1,068	39.23
Intl Enplaned Pre-Cleared Revenue	4,380	2,198	99.27	36,629	18,875	94.06
Intl Deplaned Pre-Cleared Revenue	4,688	2,583	81.49	36,476	20,405	78.76
Intl Enplaned Pre-Cleared Non-Revenue	53	24	120.83	450	307	46.58
Intl Deplaned Pre-Cleared Non-Revenue	63	13	384.62	464	320	45.00
South Terminal Domestic Enplaned Revenue	53,784	9,432	470.23	456,308	131,721	246.42
South Terminal Domestic Deplaned Revenue	55,015	9,645	470.40	458,733	132,558	246.06
South Terminal Domestic Enplaned Non-Revenue	178	8	2,125.00	1,499	55	2,625.45
South Terminal Domestic Deplaned Non-Revenue	229	6	3,716.67	1,865	72	2,490.28
ABIA Passenger Totals	1,571,056	1,434,756	9.50	14,419,259	13,196,196	9.27
<i>ABIA Enplaned Passenger Totals</i>	<i>778,307</i>	<i>713,910</i>	<i>9.02</i>	<i>7,201,282</i>	<i>6,594,067</i>	<i>9.21</i>
<i>ABIA Deplaned Passenger Totals</i>	<i>792,749</i>	<i>720,846</i>	<i>9.97</i>	<i>7,217,977</i>	<i>6,602,129</i>	<i>9.33</i>
<i>ABIA Domestic Passenger Totals</i>	<i>1,525,903</i>	<i>1,401,749</i>	<i>8.86</i>	<i>13,969,626</i>	<i>12,816,387</i>	<i>9.00</i>
<i>ABIA International Passenger Totals</i>	<i>45,153</i>	<i>33,007</i>	<i>36.80</i>	<i>449,633</i>	<i>379,809</i>	<i>18.38</i>
CURRENT PASSENGER RECORD = 1,643,016 RECORD SET = JULY 2019						
Total Aircraft Operations						
Air Carrier	12,732	11,776	8.12	118,488	112,434	5.38
Commuter & Air Taxi	1,518	1,789	-15.15	13,227	14,667	-9.82
Military	545	702	-22.36	7,216	8,432	-14.42
General Aviation						
Itinerant	4,207	4,227	-0.47	35,387	39,443	-10.28
Local	30	94	-68.09	586	1,281	-54.25
Total G.A.	4,237	4,321	-1.94	35,973	40,724	-11.67
Total Operations	19,032	18,588	2.39	174,904	176,257	-0.77

**Austin-Bergstrom International Airport
Aviation Activity Report
Calendar Year 2019 vs 2018**

By Terminal

	10/2019	10/2018	Percent Change	1/2019 - 10/2019	1/2018 - 10/2018	Percent Change
<u>Barbara Jordan Terminal (BJT)</u>						
Passenger Activity						
Domestic Enplaned Revenue	689,021	674,367	2.17	6,381,242	6,127,246	4.15
Domestic Deplaned Revenue	700,155	680,722	2.85	6,393,466	6,135,186	4.21
International Enplaned Revenue	16,516	13,678	20.75	182,405	166,667	9.44
International Deplaned Revenue	18,998	14,304	32.82	190,337	170,916	11.36
Domestic Enplaned Non-Revenue	14,237	14,099	0.98	141,364	147,945	-4.45
Domestic Deplaned Non-Revenue	13,284	13,470	-1.38	135,149	141,604	-4.56
International Enplaned Non-Revenue	138	104	32.69	1,385	1,251	10.71
International Deplaned Non-Revenue	317	103	207.77	1,487	1,068	39.23
Intl Enplaned Pre-Cleared Revenue	4,380	2,198	99.27	36,629	18,875	94.06
Intl Deplaned Pre-Cleared Revenue	4,688	2,583	81.49	36,476	20,405	78.76
Intl Enplaned Pre-Cleared Non-Revenue	53	24	120.83	450	307	46.58
Intl Deplaned Pre-Cleared Non-Revenue	63	13	384.62	464	320	45.00
Barbara Jordan Terminal Passenger Totals	1,461,850	1,415,665	3.26	13,500,854	12,931,790	4.40
<i>BJT Enplaned Passenger Totals</i>	<i>724,345</i>	<i>704,470</i>	<i>2.82</i>	<i>6,743,475</i>	<i>6,462,291</i>	<i>4.35</i>
<i>BJT Deplaned Passenger Totals</i>	<i>737,505</i>	<i>711,195</i>	<i>3.70</i>	<i>6,757,379</i>	<i>6,469,499</i>	<i>4.45</i>
<i>BJT Domestic Passenger Totals</i>	<i>1,416,697</i>	<i>1,382,658</i>	<i>2.46</i>	<i>13,051,221</i>	<i>12,551,981</i>	<i>3.98</i>
<i>BJT International Passenger Totals</i>	<i>45,153</i>	<i>33,007</i>	<i>36.80</i>	<i>449,633</i>	<i>379,809</i>	<i>18.38</i>
<u>South Terminal (ST)</u>						
Passenger Activity						
South Terminal Domestic Enplaned Revenue	53,784	9,432	470.23	456,308	131,721	246.42
South Terminal Domestic Deplaned Revenue	55,015	9,645	470.40	458,733	132,558	246.06
South Terminal Domestic Enplaned Non-Revenue	178	8	2125.00	1,499	55	2625.45
South Terminal Domestic Deplaned Non-Revenue	229	6	3716.67	1,865	72	2490.28
South Terminal Passenger Totals	109,206	19,091	472.03	918,405	264,406	247.35
<i>ST Enplaned Passenger Totals</i>	<i>53,962</i>	<i>9,440</i>	<i>471.63</i>	<i>457,807</i>	<i>131,776</i>	<i>247.41</i>
<i>ST Deplaned Passenger Totals</i>	<i>55,244</i>	<i>9,651</i>	<i>472.42</i>	<i>460,598</i>	<i>132,630</i>	<i>247.28</i>

**Austin-Bergstrom International Airport
Aviation Activity Report
Calendar Year 2019 vs 2018**

	10/2019	10/2018	Percent Change	1/2019 - 10/2019	1/2018 - 10/2018	Percent Change
<u>Total Cargo Activity</u>						
Mail						
Domestic Enplaned Mail	189,045	175,874	7.49	1,866,256	2,002,573	-6.81
Domestic Deplaned Mail	783,449	487,638	60.66	6,692,426	4,247,331	57.57
International Enplaned Mail	0	0	0.00	0	0	0.00
International Deplaned Mail	0	0	0.00	110,830	0	0.00
South Terminal-Domestic Enplaned Mail	0	0	0.00	0	0	0.00
South Terminal-Domestic Deplaned Mail	0	0	0.00	0	0	0.00
Mail Totals	972,494	663,512	46.57	8,669,512	6,249,904	38.71
Cargo						
Domestic Enplaned Cargo	5,103,655	5,103,867	0.00	47,943,606	49,481,077	-3.11
Domestic Deplaned Cargo	8,664,751	8,028,934	7.92	67,587,087	69,601,853	-2.89
International Enplaned Cargo	359,777	1,794,895	-79.96	3,752,657	7,045,792	-46.74
International Deplaned Cargo	211,997	1,166,504	-81.83	2,766,755	3,292,336	-15.96
South Terminal-Domestic Enplaned Cargo	0	0	0.00	0	0	0.00
South Terminal-Domestic Deplaned Cargo	0	0	0.00	0	0	0.00
Cargo Totals	14,340,180	16,094,200	-10.90	122,050,105	129,421,058	-5.70
Belly Freight						
Domestic Enplaned Belly Freight	327,341	277,541	17.94	3,163,011	3,002,550	5.34
Domestic Deplaned Belly Freight	516,893	539,812	-4.25	5,160,347	4,938,374	4.49
International Enplaned Belly Freight	378,600	279,180	35.61	3,396,067	2,735,361	24.15
International Deplaned Belly Freight	806,739	822,596	-1.93	6,308,923	6,029,209	4.64
South Terminal-Domestic Enplaned Belly Frght	0	0	0.00	0	0	0.00
South Terminal-Domestic Deplaned Belly Frght	0	0	0.00	0	0	0.00
Belly Freight Totals	2,029,573	1,919,129	5.75	18,028,348	16,705,494	7.92
Cargo Totals (Mail, Cargo, Belly Freight)	17,342,247	18,676,841	-7.15	148,747,965	152,376,456	-2.38
<i>Enplaned Cargo Totals</i>	<i>6,358,418</i>	<i>7,631,357</i>	<i>-16.68</i>	<i>60,121,597</i>	<i>64,267,353</i>	<i>-6.45</i>
<i>Deplaned Cargo Totals</i>	<i>10,983,829</i>	<i>11,045,484</i>	<i>-0.56</i>	<i>88,626,368</i>	<i>88,109,103</i>	<i>0.59</i>
<i>Domestic Cargo Totals</i>	<i>15,585,134</i>	<i>14,613,666</i>	<i>6.65</i>	<i>132,412,733</i>	<i>133,273,758</i>	<i>-0.65</i>
<i>International Cargo Totals</i>	<i>1,757,113</i>	<i>4,063,175</i>	<i>-56.76</i>	<i>16,335,232</i>	<i>19,102,698</i>	<i>-14.49</i>

CURRENT CARGO RECORD = 40,215,518

RECORD SET = MARCH 2001

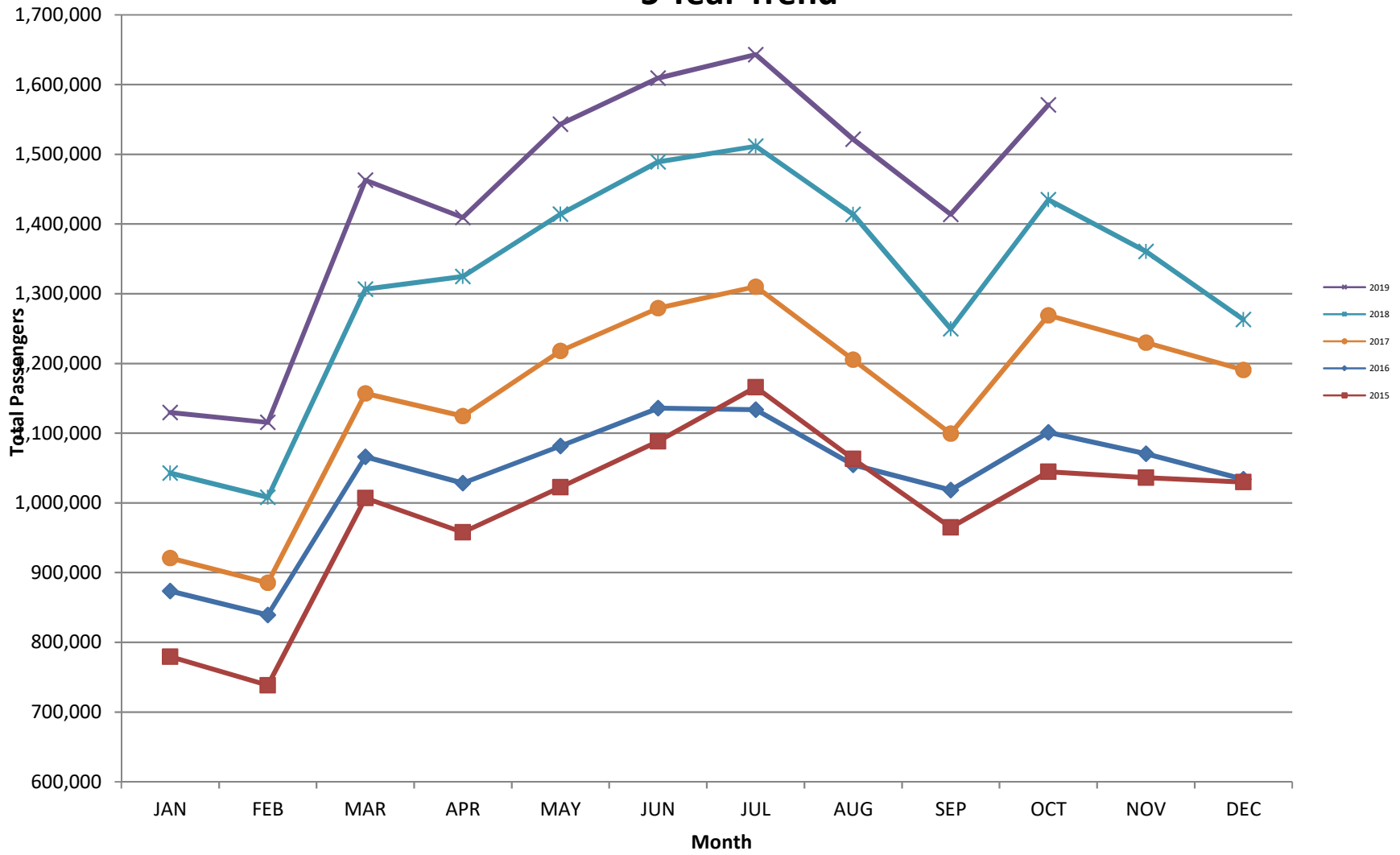
AUS – Airline Codes

October 2019

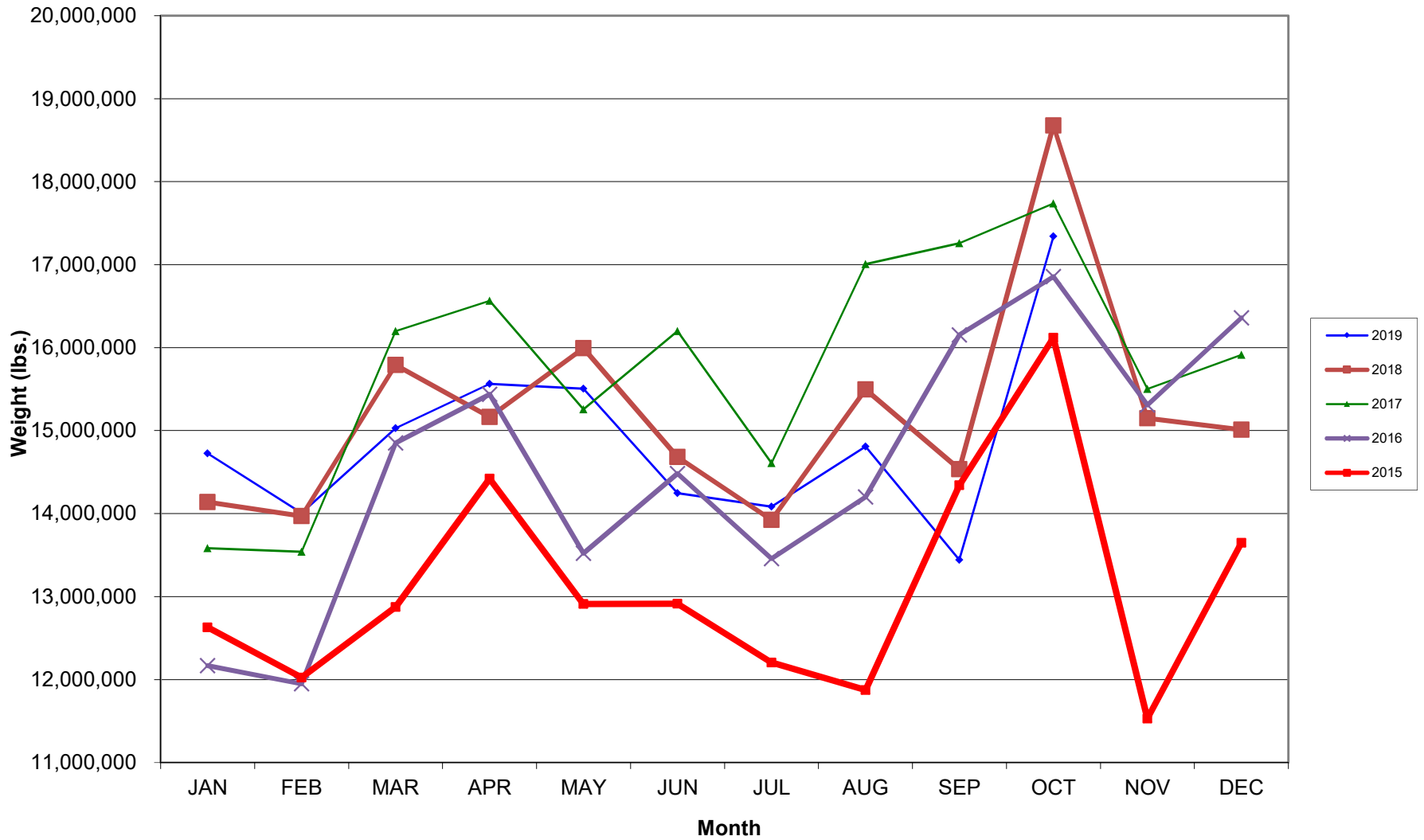
<u>Code</u>	<u>Carrier</u>
AM	Aerovias de Mexico S.A. de C.V. dba AeroMexico Airlines
AC	Air Canada
AS	Alaska Airlines, Inc.
G4	Allegiant Air, LLC
AA	American Airlines, Inc.
BA	British Airways Plc
DL	Delta Airlines
LH	Deutsche Lufthansa AG
F9	Frontier Airlines
B6	JetBlue Airways Corp.
LL	Miami Air International
DY	Norwegian Air UK LTD
WN	Southwest Airlines
NK	Spirit Airlines
SY	Sun Country Airlines
WQ	Swift Air, LLC
UA	United Airlines, Inc.
VB	VivaAerobus
WS	WestJet Airlines

AUSTIN PASSENGER TRAFFIC

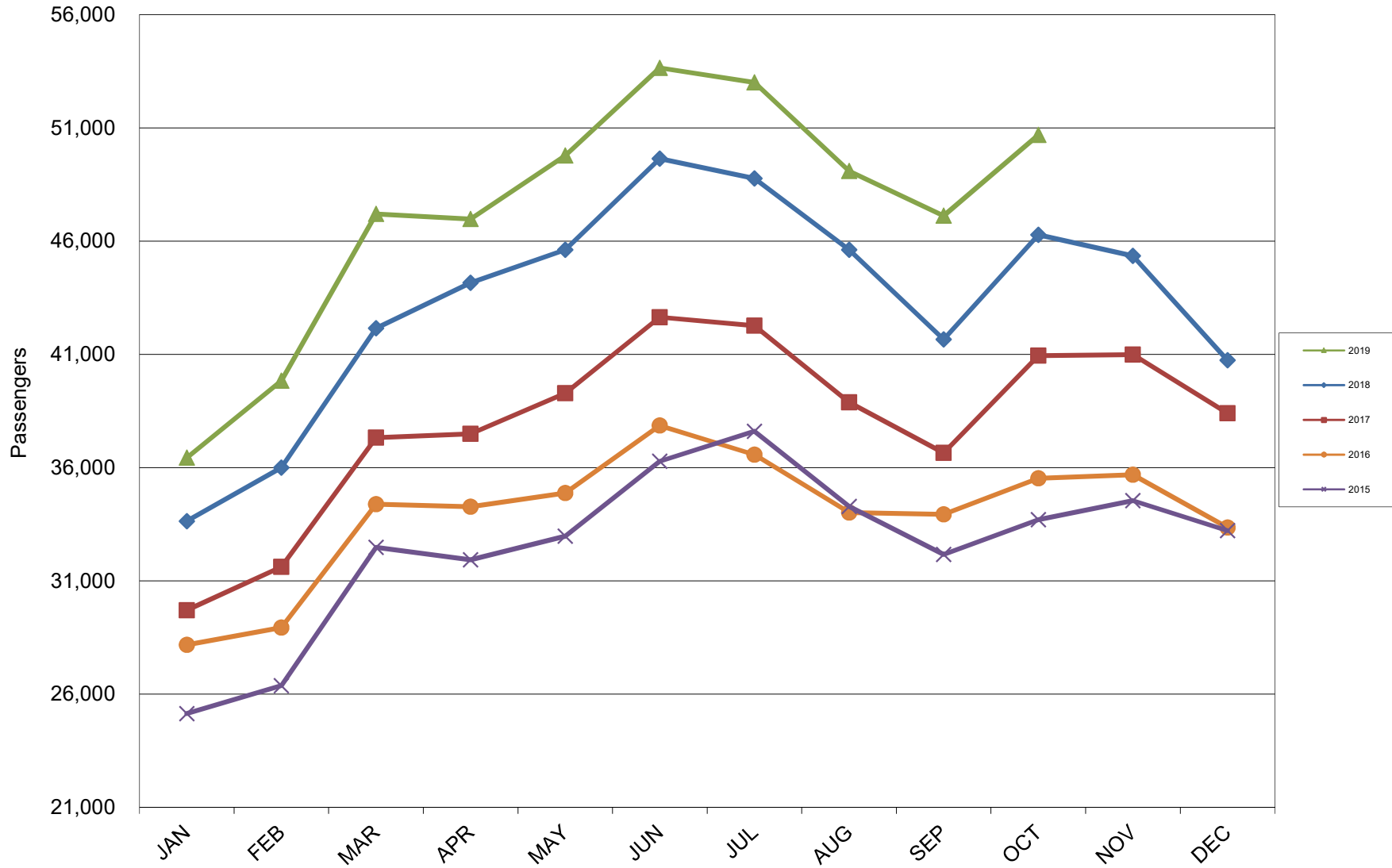
5 Year Trend



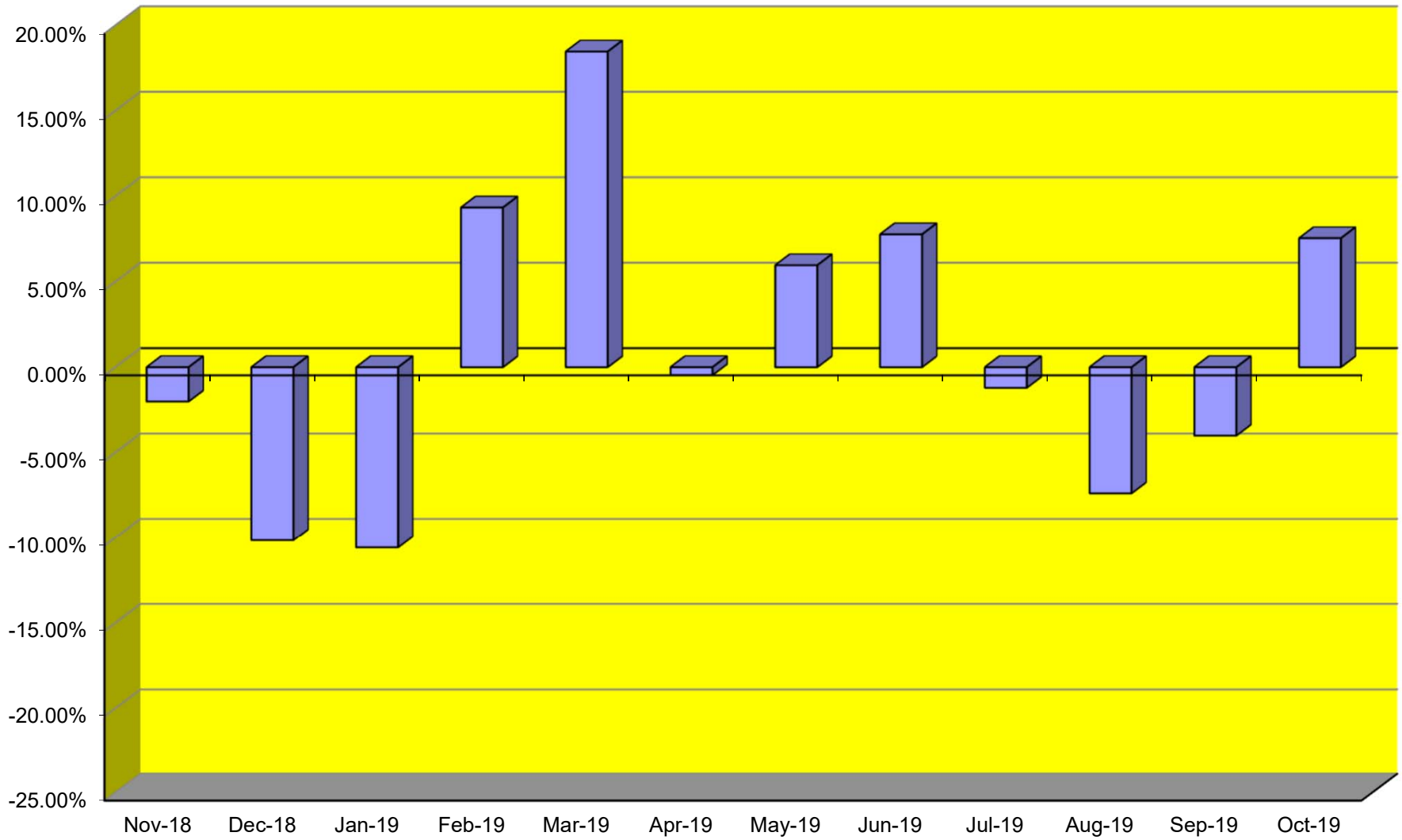
TOTAL CARGO POUNDAGE - AUSTIN, TEXAS



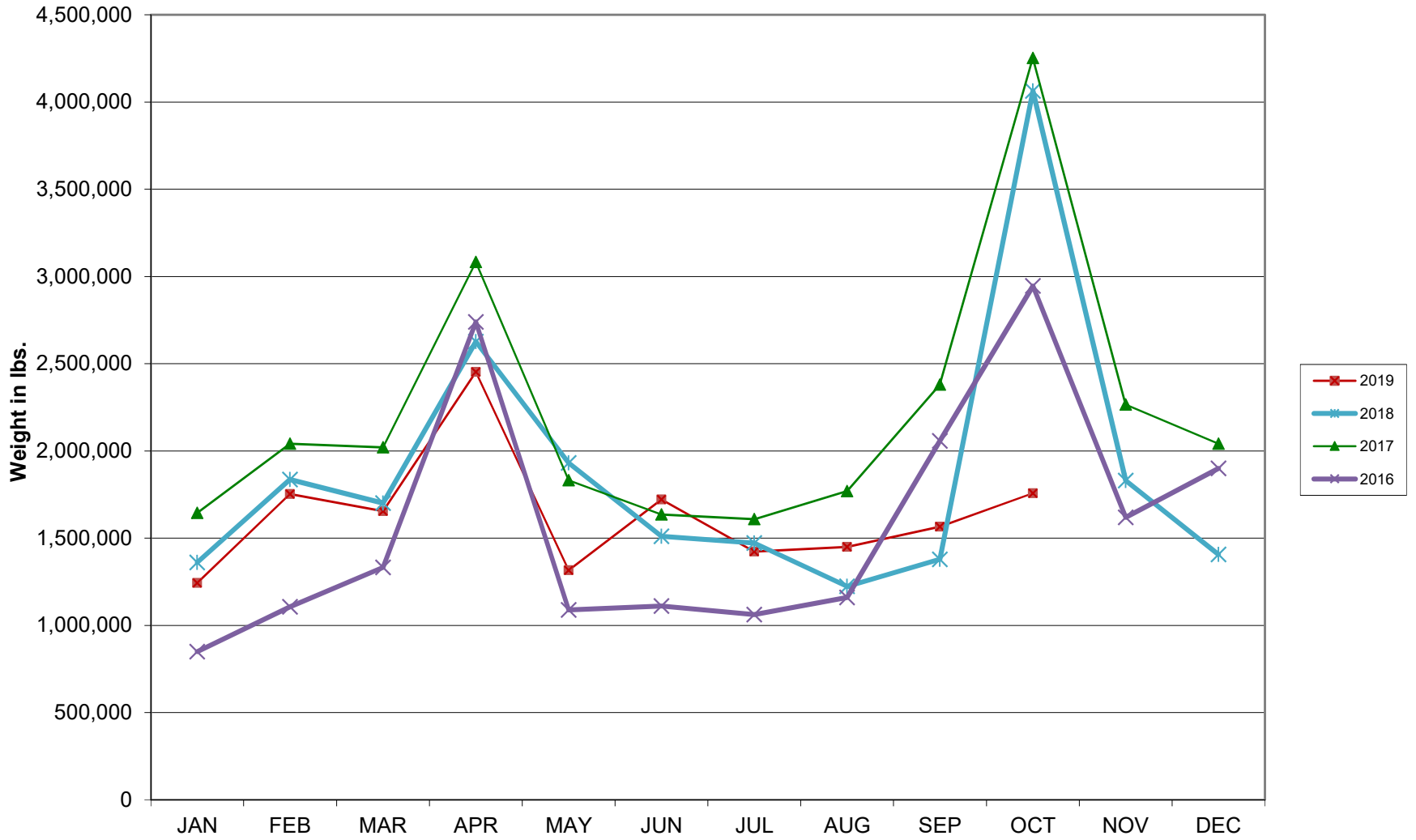
Average Daily Passengers



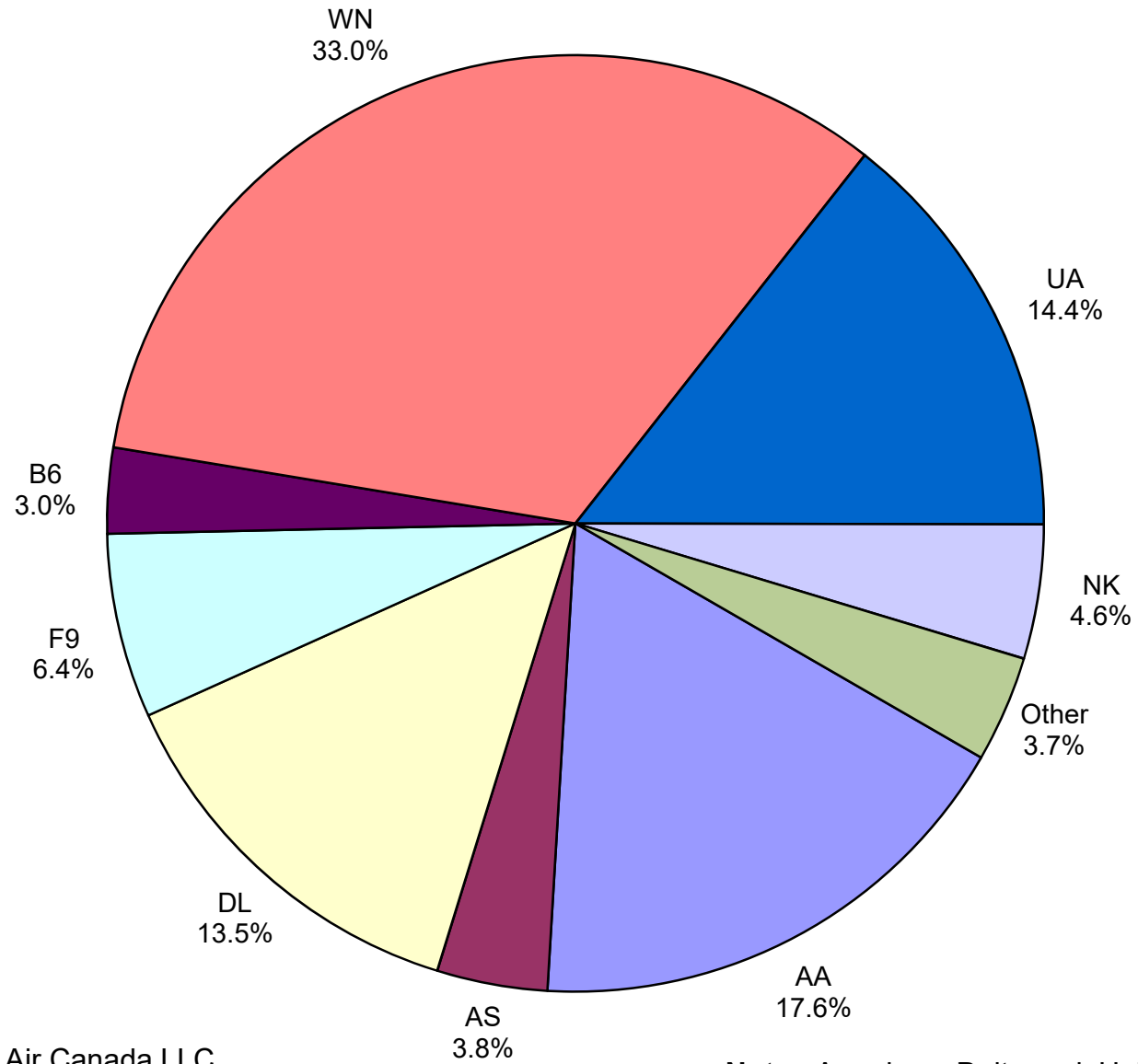
Monthly % Change in Average Daily Passengers



HISTORY OF INTERNATIONAL AIR CARGO



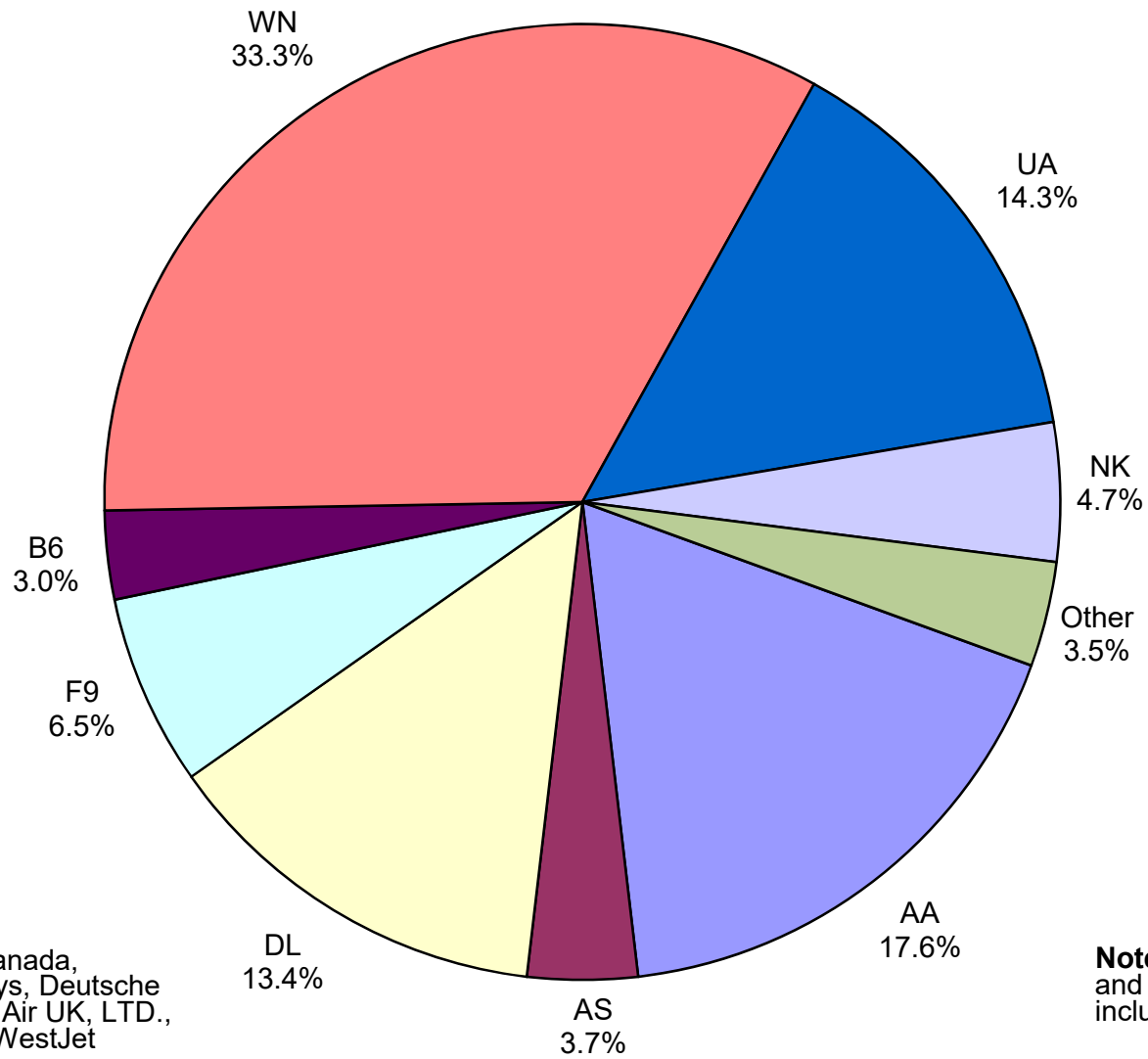
Total Passengers October 2019



Other: Aeromexico, Air Canada LLC, Allegiant Air, British Airways, Deutsche Lufthansa AG, Miami Air, Norwegian Air UK, LTD, Sun Country, VivaAerobus and WestJet Airlines

Note: American, Delta and United Airlines percentages include Affiliates.

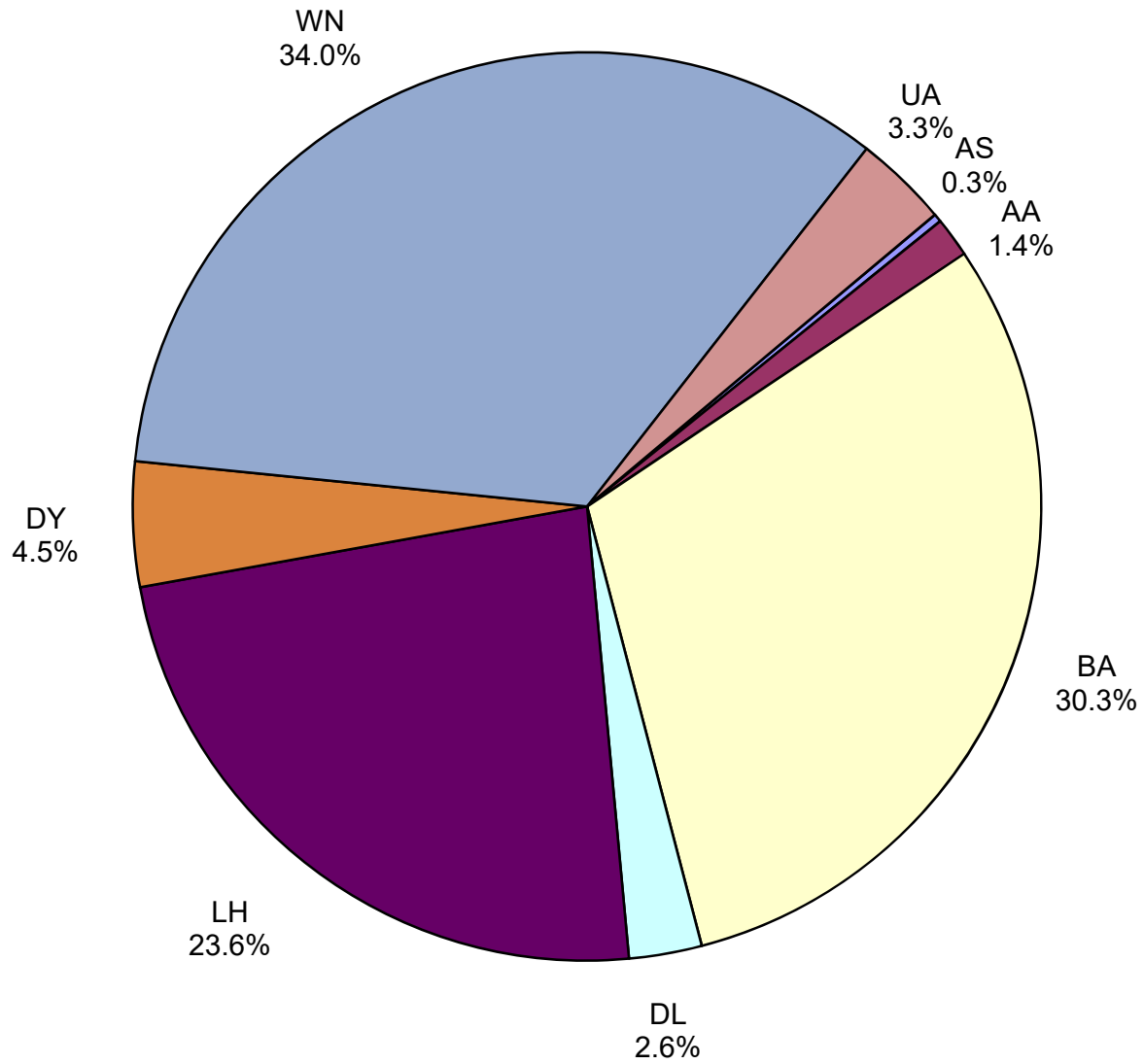
**All Passenger Carriers
Enplaned Revenue Passengers
October 2019**



Other: Aeromexico, Air Canada, Allegiant Air, British Airways, Deutsche Lufthansa AG, Norwegian Air UK, LTD., Sun Country Airlines and WestJet Airlines

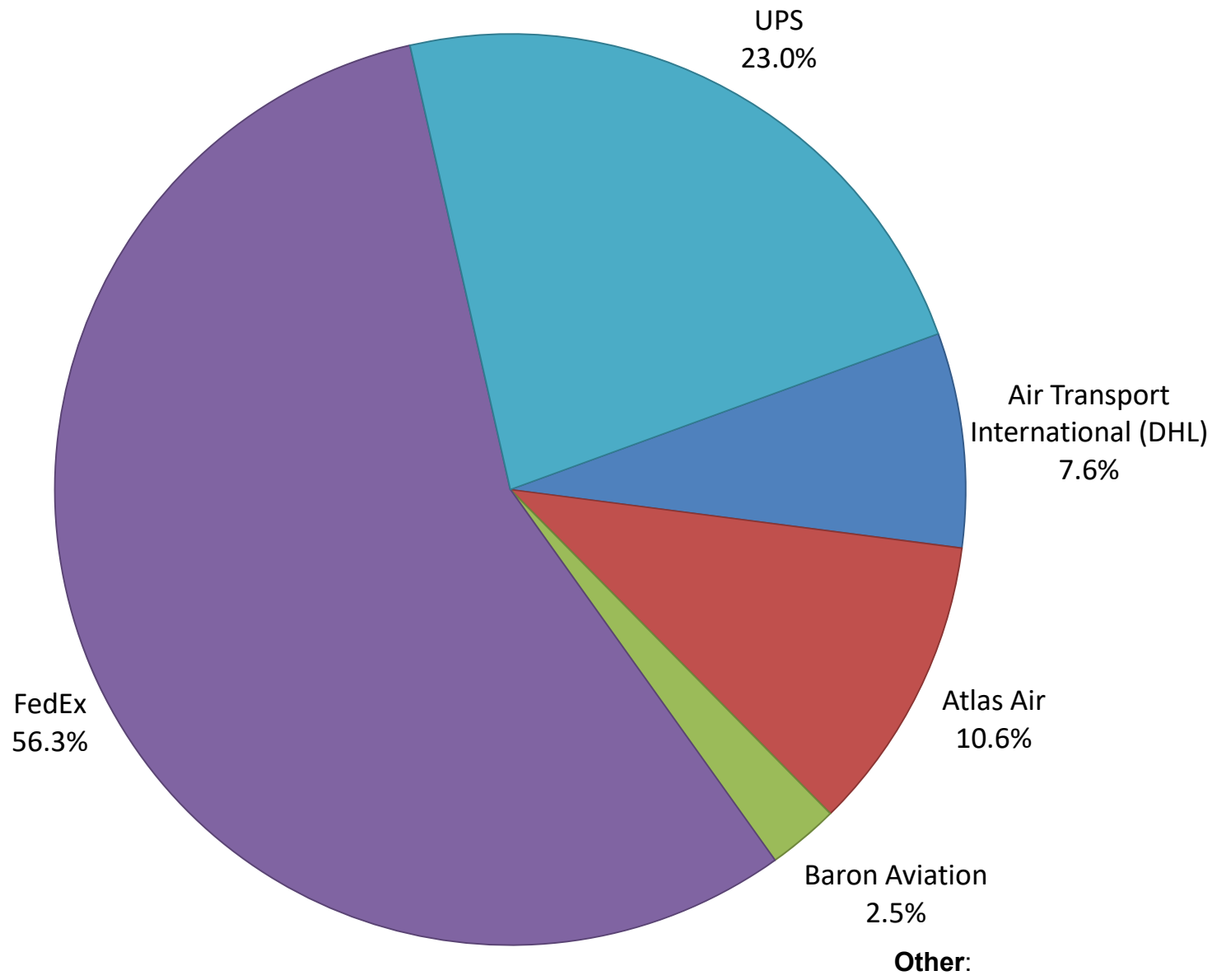
Note: American/US Airways, Delta and United Airlines percentages include Affiliates.

**AUS Belly Freight Market Shares
October 2019**

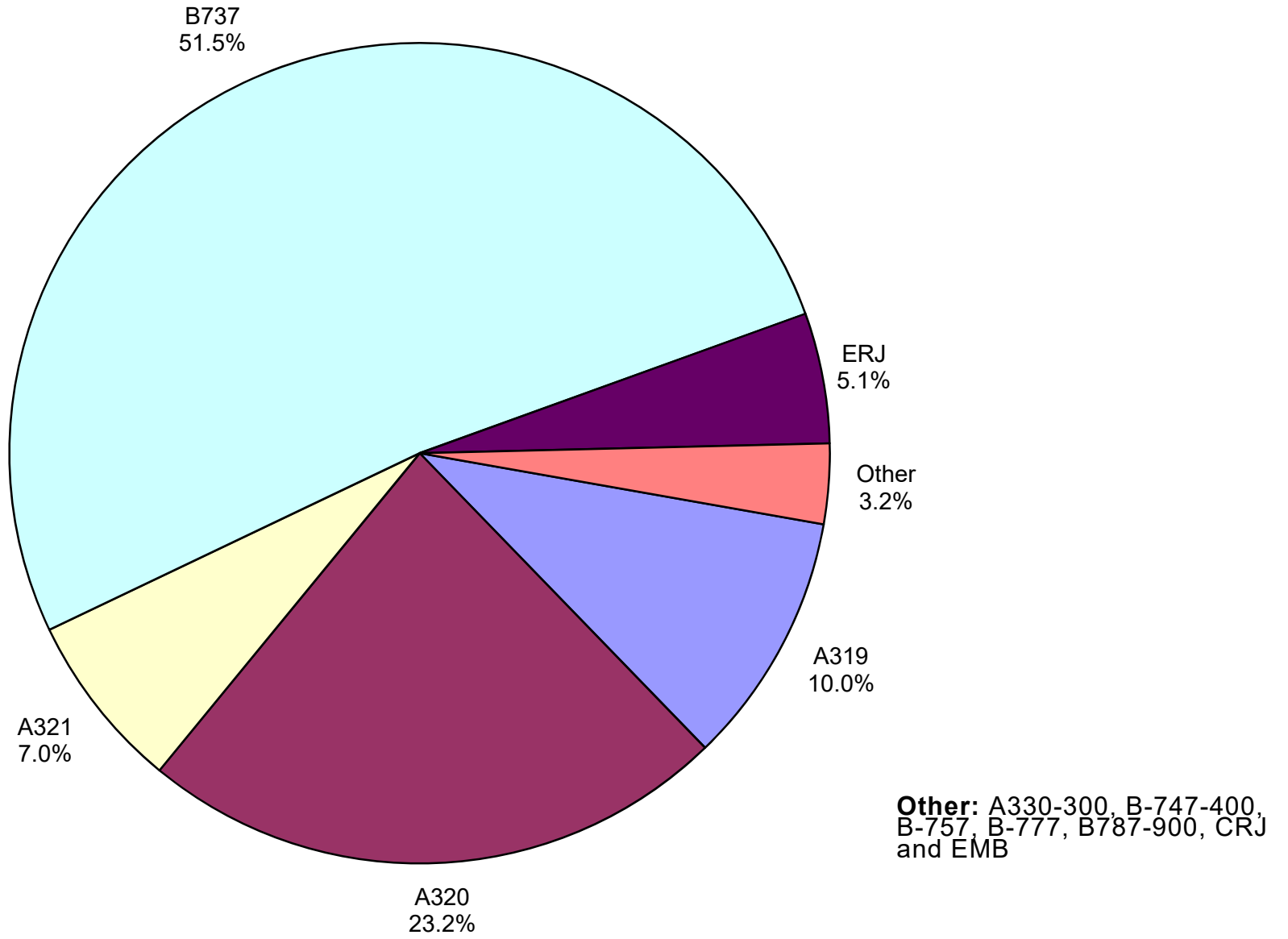


Other =

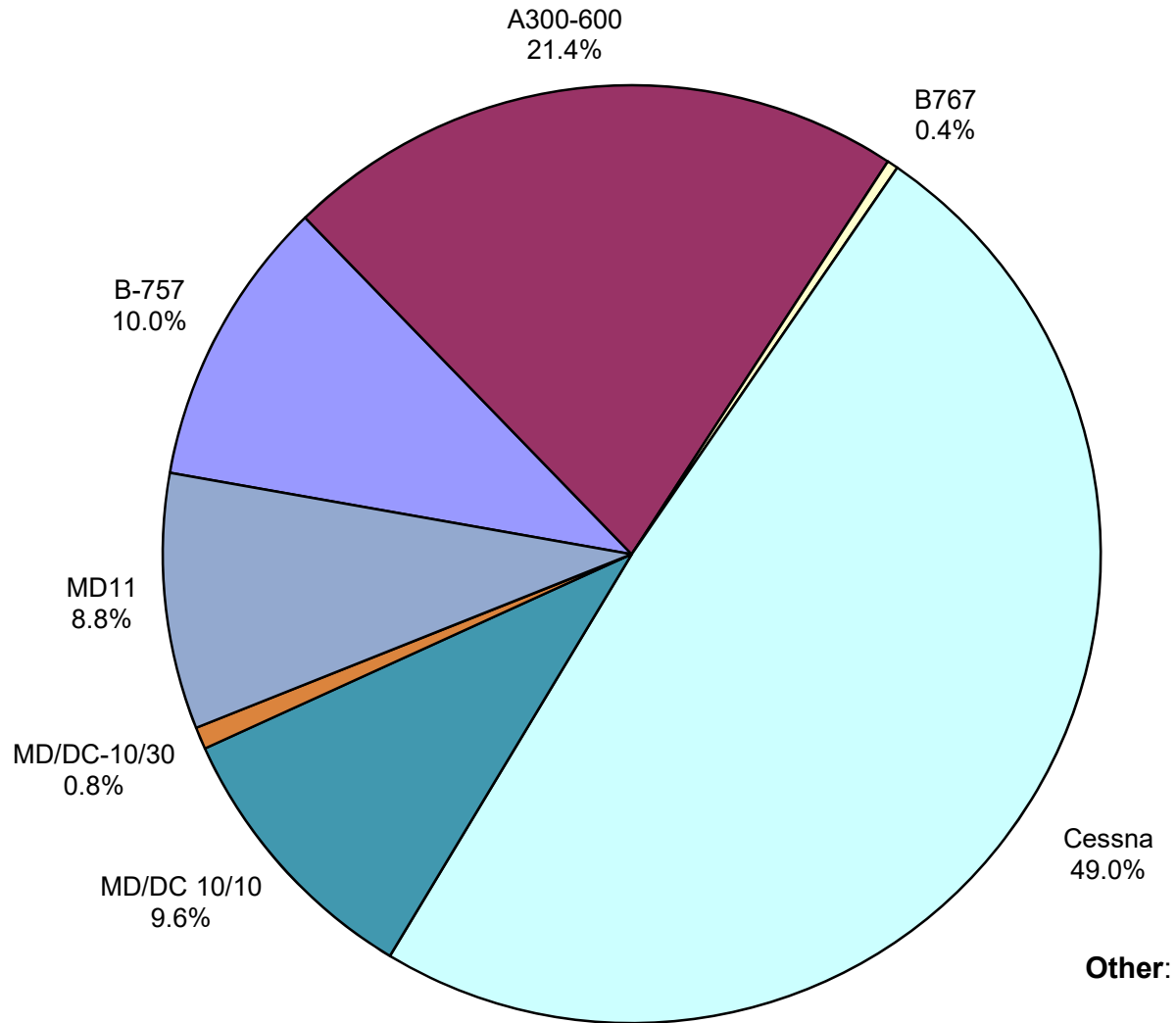
Air Cargo Market Share October 2019



**AUS Scheduled Passenger Aircraft Fleet Mix
October 2019**



AUS Scheduled Cargo Aircraft Fleet Mix October 2019



Austin-Bergstrom International Airport

PAX Detail Report - October, 2019

Company	10/2019	10/2018	Period		YTD 2019	YTD 2018	YTD		2019 Share	2018 Share	Share Diff
			Difference	Change			Difference	Change			
ABC Aerolineas S.A. de C.V.	0	88	-88	-100.0	0	129	-129	-100.0	0.0	0.0	0.0
Aerovias de Mexico S.A. de C.V.	4,720	3,488	1,232	35.3	38,306	35,633	2,673	7.5	0.3	0.3	0.0
Air Canada	7,055	4,818	2,237	46.4	61,273	39,907	21,366	53.5	0.4	0.3	0.1
Air New Zealand	0	0	0	0.0	302	0	302	0.0	0.0	0.0	0.0
Alaska Airlines	59,889	50,235	9,654	19.2	523,496	461,242	62,254	13.5	3.6	3.5	0.1
Allegiant Air	9,121	15,841	-6,720	-42.4	157,597	243,311	-85,714	-35.2	1.1	1.8	-0.8
American Airlines	276,896	267,149	9,747	3.6	2,563,464	2,339,503	223,961	9.6	17.8	17.7	0.0
British Airways	15,784	16,001	-217	-1.4	158,202	144,025	14,177	9.8	1.1	1.1	0.0
Concesionaria Vuela Compañía de Aviación, S.A.P.I. de C.V.	0	1,291	-1,291	-100.0	434	13,263	-12,829	-96.7	0.0	0.1	-0.1
Condor Airlines	0	0	0	0.0	0	18,876	-18,876	-100.0	0.0	0.1	-0.1
Delta Air Lines	212,138	187,333	24,805	13.2	1,969,517	1,762,862	206,655	11.7	13.7	13.4	0.3
Deutsche Lufthansa AG	7,817	0	7,817	0.0	50,222	0	50,222	0.0	0.3	0.0	0.3
Frontier Airlines	100,085	123,435	-23,350	-18.9	757,590	981,213	-223,623	-22.8	5.3	7.4	-2.2
JetBlue Airways	46,448	46,721	-273	-0.6	471,573	490,057	-18,484	-3.8	3.3	3.7	-0.4
Miami Air International	546	470	76	16.2	1,415	779	636	81.6	0.0	0.0	0.0
Norwegian Air UK LTD	6,835	6,851	-16	-0.2	62,435	54,123	8,312	15.4	0.4	0.4	0.0
Scandinavian Airlines	0	0	0	0.0	423	697	-274	-39.3	0.0	0.0	0.0
Southwest Airlines	518,431	495,908	22,523	4.5	4,868,731	4,612,516	256,215	5.6	33.8	35.0	-1.2
Spirit Airlines	72,749	0	72,749	0.0	614,457	0	614,457	0.0	4.3	0.0	4.3
Sun Country Airlines	3,458	3,939	-481	-12.2	32,646	23,584	9,062	38.4	0.2	0.2	0.0
Swift Air	0	86	-86	-100.0	1,847	1,920	-73	-3.8	0.0	0.0	0.0
United Airlines	226,791	207,852	18,939	9.1	2,067,451	1,939,849	127,602	6.6	14.3	14.7	-0.4
Vacation Express	0	0	0	0.0	1,750	2,758	-1,008	-36.5	0.0	0.0	0.0
VIA Airlines	0	3,250	-3,250	-100.0	3,218	18,832	-15,614	-82.9	0.0	0.1	-0.1
Virgin America	0	0	0	0.0	0	11,117	-11,117	-100.0	0.0	0.1	-0.1
VivaAerobus	164	0	164	0.0	164	0	164	0.0	0.0	0.0	0.0
WestJet	2,129	0	2,129	0.0	12,746	0	12,746	0.0	0.1	0.0	0.1
Report Totals	1,571,056	1,434,756	136,300	9.5%	14,419,259	13,196,196	1,223,063	9.3%			

Statistics Included in Report:

Domestic Passengers:	Enplaned Revenue, Deplaned Revenue, Enplaned Non-Revenue, Deplaned Non-Revenue
International Passengers:	Enplaned Revenue, Deplaned Revenue, Enplaned Non-Revenue, Deplaned Non-Revenue
International Pre-Cleared Passengers:	Enplaned Revenue, Deplaned Revenue, Enplaned Non-Revenue, Deplaned Non-Revenue
South Terminal Domestic Passengers:	Enplaned Revenue, Deplaned Revenue, Enplaned Non-Revenue, Deplaned Non-Revenue

Austin-Bergstrom International Airport

Summary Landing Report

Landing Type: Total

Month	2019		2018		2017		% Change 2019 - 2018		% Change 2018 - 2017	
	Count	Weight	Count	Weight	Count	Weight	Count	Weight	Count	Weight
January	5,348	733,746,679	5,086	688,923,110	4,768	612,688,871	5.15%	6.51%	6.67%	12.44%
February	5,040	692,708,930	4,706	637,500,756	4,357	552,711,639	7.10%	8.66%	8.01%	15.34%
March	5,964	825,483,911	5,643	760,648,260	5,307	685,661,659	5.69%	8.52%	6.33%	10.94%
April	5,899	815,621,798	5,797	793,367,736	5,179	689,402,051	1.76%	2.81%	11.93%	15.08%
May	6,294	881,747,150	6,117	831,431,763	5,529	736,484,083	2.89%	6.05%	10.63%	12.89%
June	6,322	890,410,020	6,211	852,438,818	5,603	752,628,599	1.79%	4.45%	10.85%	13.26%
July	6,551	915,103,306	6,346	869,502,671	5,698	763,088,836	3.23%	5.24%	11.37%	13.95%
August	6,447	906,499,773	6,245	861,046,997	5,490	741,110,019	3.23%	5.28%	13.75%	16.18%
September	6,020	848,899,951	5,737	790,731,351	5,046	679,381,339	4.93%	7.36%	13.69%	16.39%
October	6,459	916,700,076	6,078	846,310,860	5,448	743,973,610	6.27%	8.32%	11.56%	13.76%
November			5,684	780,994,101	5,289	718,179,948			7.47%	8.75%
December			5,600	761,317,385	5,442	737,424,963			2.90%	3.24%
Totals for Selected Period	60,344	8,426,921,594	57,966	7,931,902,322	52,425	6,957,130,706	4.10%	6.24%	10.57%	14.01%
Yearly Totals	60,344	8,426,921,594	69,250	9,474,213,808	63,156	8,412,735,617			9.65%	12.62%