

**Austin-Bergstrom International Airport
Aviation Activity Report
Calendar Year 2017 vs 2016**

Combined Terminals

	8/2017	8/2016	Percent Change	01/2017 - 08/2017	01/2016 - 08/2016	Percent Change
ABIA						
Total Passenger Activity						
Domestic Enplaned Revenue	547,893	489,422	11.95	4,277,627	3,924,725	8.99
Domestic Deplaned Revenue	579,960	517,505	12.07	4,249,408	3,917,883	8.46
International Enplaned Revenue	11,442	8,620	32.74	102,729	78,367	31.09
International Deplaned Revenue	13,172	10,810	21.85	103,596	82,635	25.37
Domestic Enplaned Non-Revenue	14,361	12,581	14.15	109,635	89,721	22.20
Domestic Deplaned Non-Revenue	13,566	12,074	12.36	104,290	90,742	14.93
International Enplaned Non-Revenue	139	92	51.09	833	670	24.33
International Deplaned Non-Revenue	135	123	9.76	695	680	2.21
Intl Enplaned Pre-Cleared Revenue	1,572	1,395	12.69	13,174	12,667	4.00
Intl Deplaned Pre-Cleared Revenue	1,874	1,811	3.48	13,831	14,078	-1.75
Intl Enplaned Pre-Cleared Non-Revenue	25	31	-19.35	188	224	-16.07
Intl Deplaned Pre-Cleared Non-Revenue	19	32	-40.62	191	247	-22.67
South Terminal Domestic Enplaned Revenue	10,331	0	0.00	62,282	0	0.00
South Terminal Domestic Deplaned Revenue	10,844	0	0.00	61,839	0	0.00
South Terminal Domestic Enplaned Non-Revenue	5	0	0.00	36	0	0.00
South Terminal Domestic Deplaned Non-Revenue	3	0	0.00	13	0	0.00
ABIA Passenger Totals	1,205,341	1,054,496	14.30	9,100,367	8,212,639	10.81
<i>ABIA Enplaned Passenger Totals</i>	<i>585,768</i>	<i>512,141</i>	<i>14.38</i>	<i>4,566,504</i>	<i>4,106,374</i>	<i>11.21</i>
<i>ABIA Deplaned Passenger Totals</i>	<i>619,573</i>	<i>542,355</i>	<i>14.24</i>	<i>4,533,863</i>	<i>4,106,265</i>	<i>10.41</i>
<i>ABIA Domestic Passenger Totals</i>	<i>1,176,963</i>	<i>1,031,582</i>	<i>14.09</i>	<i>8,865,130</i>	<i>8,023,071</i>	<i>10.50</i>
<i>ABIA International Passenger Totals</i>	<i>28,378</i>	<i>22,914</i>	<i>23.85</i>	<i>235,237</i>	<i>189,568</i>	<i>24.09</i>

CURRENT PASSENGER RECORD = 1,310,174 RECORD SET = JULY 2017

Total Aircraft Operations

Air Carrier	10,703	9,223	16.05	81,895	76,046	7.69
Commuter & Air Taxi	1,106	1,953	-43.37	9,771	10,605	-7.86
Military	1,005	991	1.41	6,607	7,119	-7.19
General Aviation						
Itinerant	3,581	3,484	2.78	32,722	31,683	3.28
Local	272	168	61.90	1,867	1,762	5.96
Total G.A.	3,853	3,652	5.50	34,589	33,445	3.42
Total Operations	16,667	15,819	5.36	132,862	127,215	4.44

**Austin-Bergstrom International Airport
Aviation Activity Report
Calendar Year 2017 vs 2016**

By Terminal

	8/2017	8/2016	Percent Change	01/2017 - 08/2017	01/2016 - 08/2016	Percent Change
<u>Barbara Jordan Terminal (BJT)</u>						
Passenger Activity						
Domestic Enplaned Revenue	547,893	489,422	11.95	4,277,627	3,924,725	8.99
Domestic Deplaned Revenue	579,960	517,505	12.07	4,249,408	3,917,883	8.46
International Enplaned Revenue	11,442	8,620	32.74	102,729	78,367	31.09
International Deplaned Revenue	13,172	10,810	21.85	103,596	82,635	25.37
Domestic Enplaned Non-Revenue	14,361	12,581	14.15	109,635	89,721	22.20
Domestic Deplaned Non-Revenue	13,566	12,074	12.36	104,290	90,742	14.93
International Enplaned Non-Revenue	139	92	51.09	833	670	24.33
International Deplaned Non-Revenue	135	123	9.76	695	680	2.21
Intl Enplaned Pre-Cleared Revenue	1,572	1,395	12.69	13,174	12,667	4.00
Intl Deplaned Pre-Cleared Revenue	1,874	1,811	3.48	13,831	14,078	-1.75
Intl Enplaned Pre-Cleared Non-Revenue	25	31	-19.35	188	224	-16.07
Intl Deplaned Pre-Cleared Non-Revenue	19	32	-40.62	191	247	-22.67
Barbara Jordan Terminal Passenger Totals	1,184,158	1,054,496	12.30	8,976,197	8,212,639	9.30
<i>BJT Enplaned Passenger Totals</i>	<i>575,432</i>	<i>512,141</i>	<i>12.36</i>	<i>4,504,186</i>	<i>4,106,374</i>	<i>9.69</i>
<i>BJT Deplaned Passenger Totals</i>	<i>608,726</i>	<i>542,355</i>	<i>12.24</i>	<i>4,472,011</i>	<i>4,106,265</i>	<i>8.91</i>
<i>BJT Domestic Passenger Totals</i>	<i>1,155,780</i>	<i>1,031,582</i>	<i>12.04</i>	<i>8,740,960</i>	<i>8,023,071</i>	<i>8.95</i>
<i>BJT International Passenger Totals</i>	<i>28,378</i>	<i>22,914</i>	<i>23.85</i>	<i>235,237</i>	<i>189,568</i>	<i>24.09</i>
<u>South Terminal (ST)</u>						
Passenger Activity						
South Terminal Domestic Enplaned Revenue	10,331	0	0	62,282	0	0
South Terminal Domestic Deplaned Revenue	10,844	0	0	61,839	0	0
South Terminal Domestic Enplaned Non-Revenue	5	0	0	36	0	0
South Terminal Domestic Deplaned Non-Revenue	3	0	0	13	0	0
South Terminal Passenger Totals	21,183	0	0.00	124,170	0	0.00
<i>ST Enplaned Passenger Totals</i>	<i>10,336</i>	<i>0</i>	<i>0</i>	<i>62,318</i>	<i>0</i>	<i>0</i>
<i>ST Deplaned Passenger Totals</i>	<i>10,847</i>	<i>0</i>	<i>0</i>	<i>61,852</i>	<i>0</i>	<i>0</i>

**Austin-Bergstrom International Airport
Aviation Activity Report
Calendar Year 2017 vs 2016**

	8/2017	8/2016	Percent Change	01/2017 - 08/2017	01/2016 - 08/2016	Percent Change
<u>Total Cargo Activity</u>						
Mail						
Domestic Enplaned Mail	197,968	141,804	39.61	1,555,444	1,018,794	52.68
Domestic Deplaned Mail	396,400	286,354	38.43	2,932,386	1,778,362	64.89
International Enplaned Mail	0	0	0.00	0	0	0.00
International Deplaned Mail	0	0	0.00	2	2	0.00
South Terminal-Intl Enplaned Mail	0	0	0.00	0	0	0.00
South Terminal-Intl Deplaned Mail	0	0	0.00	0	0	0.00
Mail Totals	594,368	428,158	38.82	4,487,832	2,797,158	60.44
Cargo						
Domestic Enplaned Cargo	5,862,678	4,962,333	18.14	40,484,791	40,100,600	0.96
Domestic Deplaned Cargo	7,925,755	6,965,728	13.78	56,054,175	51,078,134	9.74
International Enplaned Cargo	603,981	417,013	44.84	5,385,795	3,059,984	76.01
International Deplaned Cargo	173,418	179,091	-3.17	2,728,106	2,283,256	19.48
South Terminal-Intl Enplaned Cargo	0	0	0.00	0	0	0.00
South Terminal-Intl Deplaned Cargo	0	0	0.00	0	0	0.00
Cargo Totals	14,565,832	12,524,165	16.30	104,652,867	96,521,974	8.42
Belly Freight						
Domestic Enplaned Belly Freight	312,689	237,143	31.86	2,205,848	1,905,868	15.74
Domestic Deplaned Belly Freight	539,874	447,257	20.71	4,086,699	3,736,193	9.38
International Enplaned Belly Freight	215,184	91,740	134.56	1,831,338	1,229,755	48.92
International Deplaned Belly Freight	776,983	472,562	64.42	5,686,878	3,875,935	46.72
South Terminal-Intl Enplaned Belly Freight	0	0	0.00	0	0	0.00
South Terminal-Intl Deplaned Belly Freight	0	0	0.00	0	0	0.00
Belly Freight Totals	1,844,730	1,248,702	47.73	13,810,763	10,747,751	28.50
Cargo Totals (Mail, Cargo, Belly Freight)	17,004,930	14,201,025	19.74	122,951,462	110,066,883	11.71
<i>Enplaned Cargo Totals</i>	<i>7,192,500</i>	<i>5,850,033</i>	<i>22.95</i>	<i>51,463,216</i>	<i>47,315,001</i>	<i>8.77</i>
<i>Deplaned Cargo Totals</i>	<i>9,812,430</i>	<i>8,350,992</i>	<i>17.50</i>	<i>71,488,246</i>	<i>62,751,882</i>	<i>13.92</i>
<i>Domestic Cargo Totals</i>	<i>15,235,364</i>	<i>13,040,619</i>	<i>16.83</i>	<i>107,319,343</i>	<i>99,617,951</i>	<i>7.73</i>
<i>International Cargo Totals</i>	<i>1,769,566</i>	<i>1,160,406</i>	<i>52.50</i>	<i>15,632,119</i>	<i>10,448,932</i>	<i>49.60</i>

CURRENT CARGO RECORD = 40,215,518

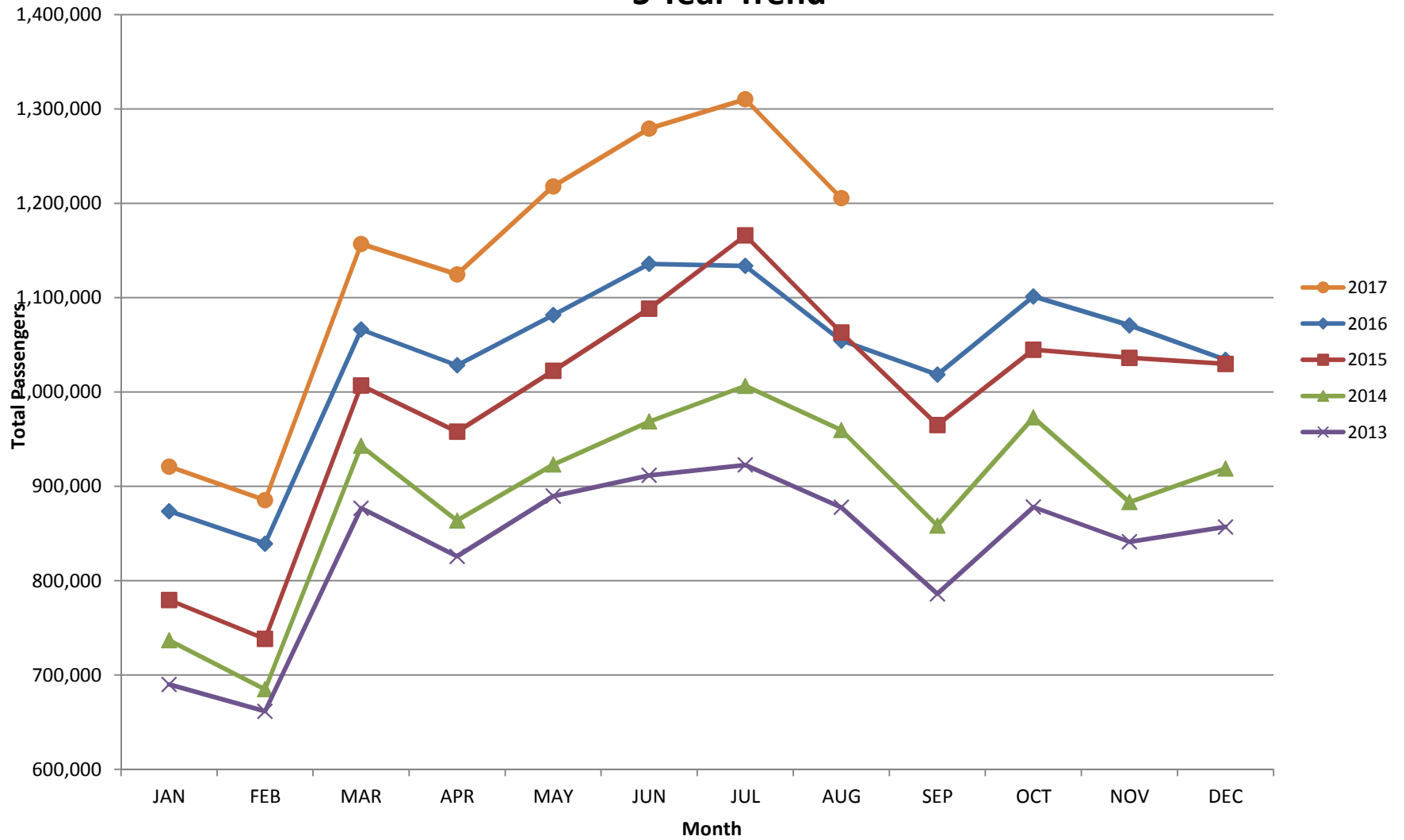
RECORD SET = MARCH 2001

AUS – Airline Codes
August 2017

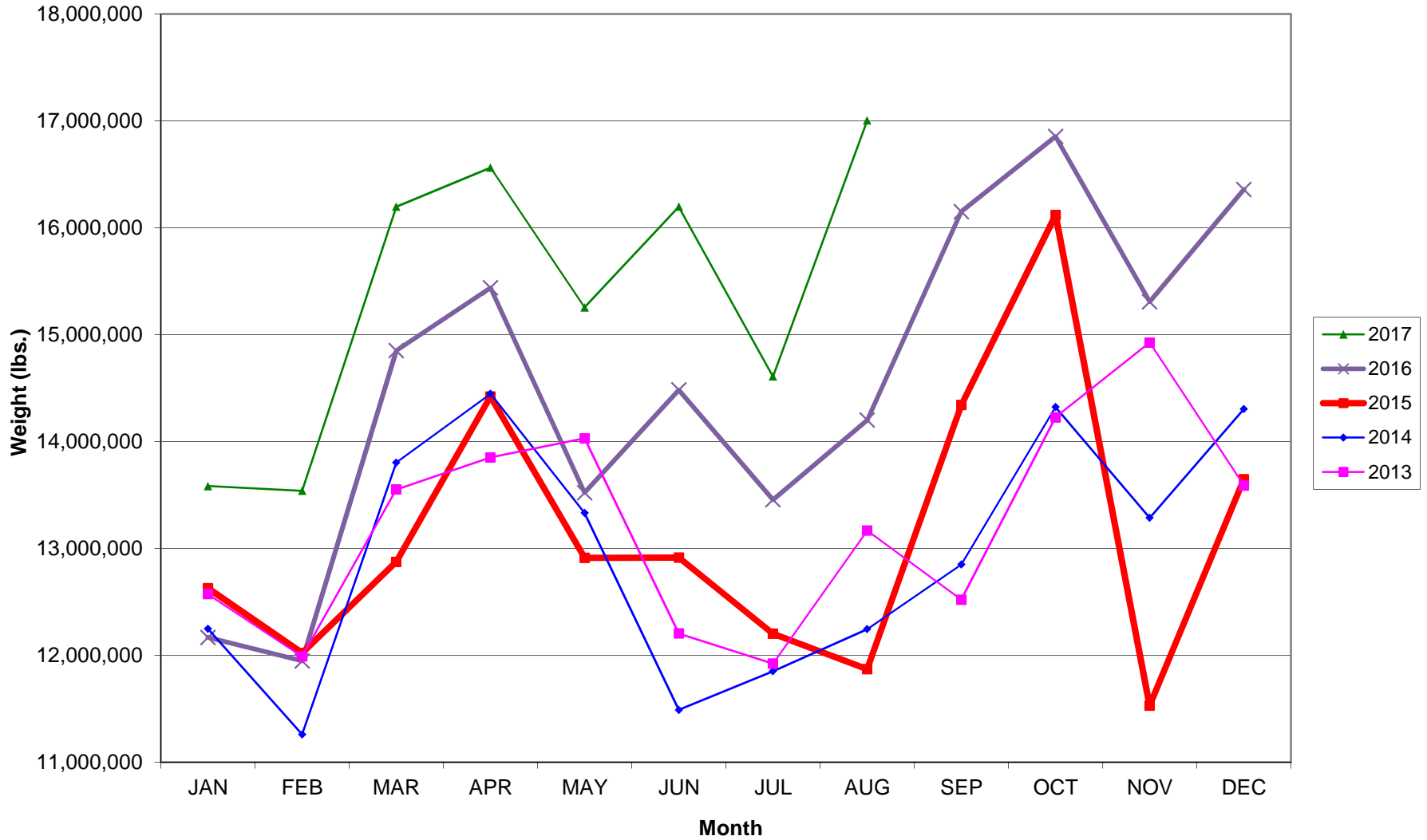
<u>Code</u>	<u>Carrier</u>
AM	AeroMexico Airlines
AC	Air Canada
AS	Alaska Airlines, Inc.
G4	Allegiant Air, LLC
AA	American Airlines, Inc.
BA	British Airways Plc
DE	Condor Airlines
DL	Delta Airlines
F9	Frontier Airlines
B6	JetBlue Airways Corp.
WN	Southwest Airlines
SY	Sun Country Airlines/ MN Airlines, LLC
WQ	Swift Air
UA	United Airlines, Inc.
VC	VIA Airlines
VX	Virgin America Inc.
Y4	Volaris/Concesionaria Vuela Compañía de Aviación, S.A.P.I. de C.V.

AUSTIN PASSENGER TRAFFIC

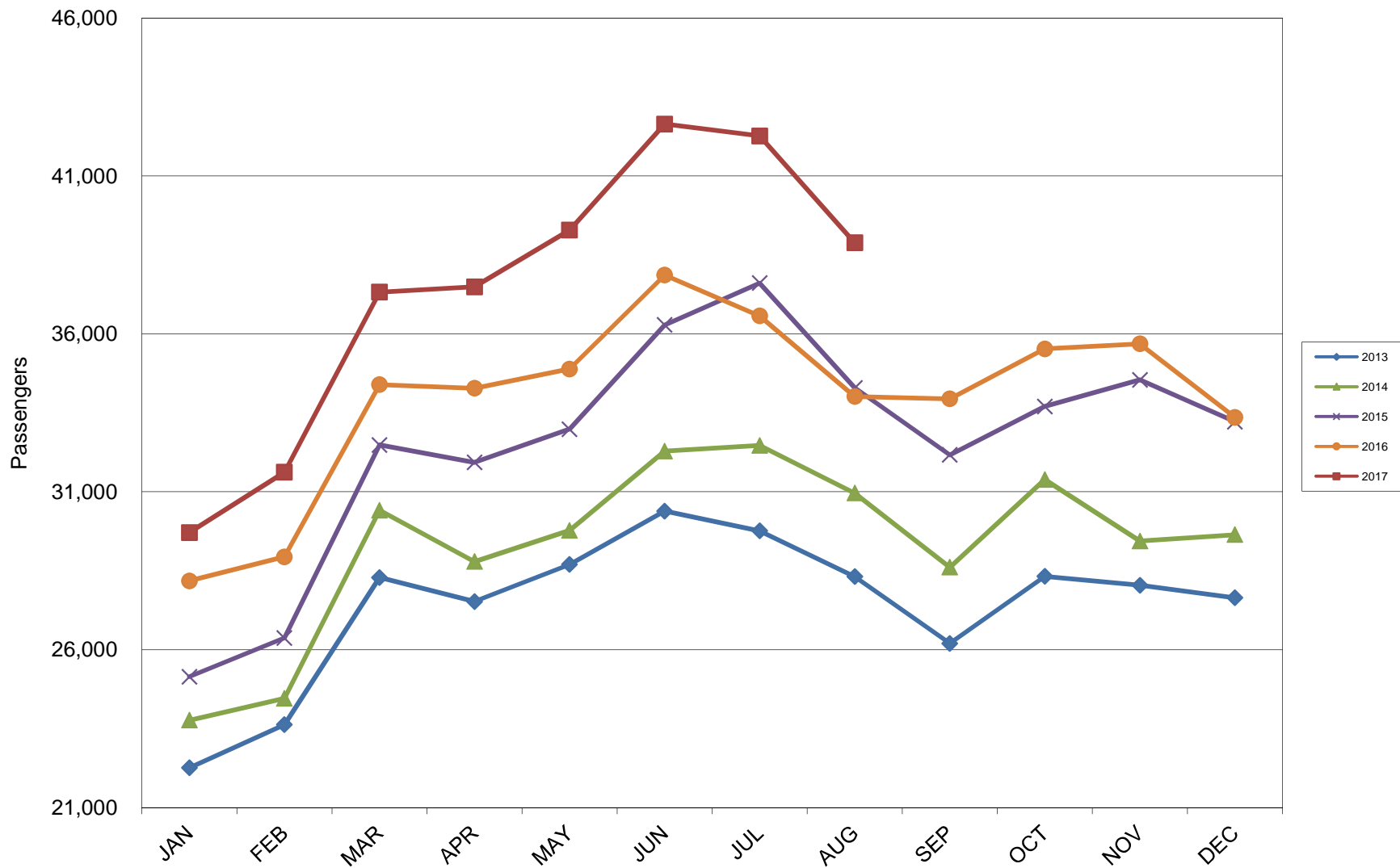
5 Year Trend



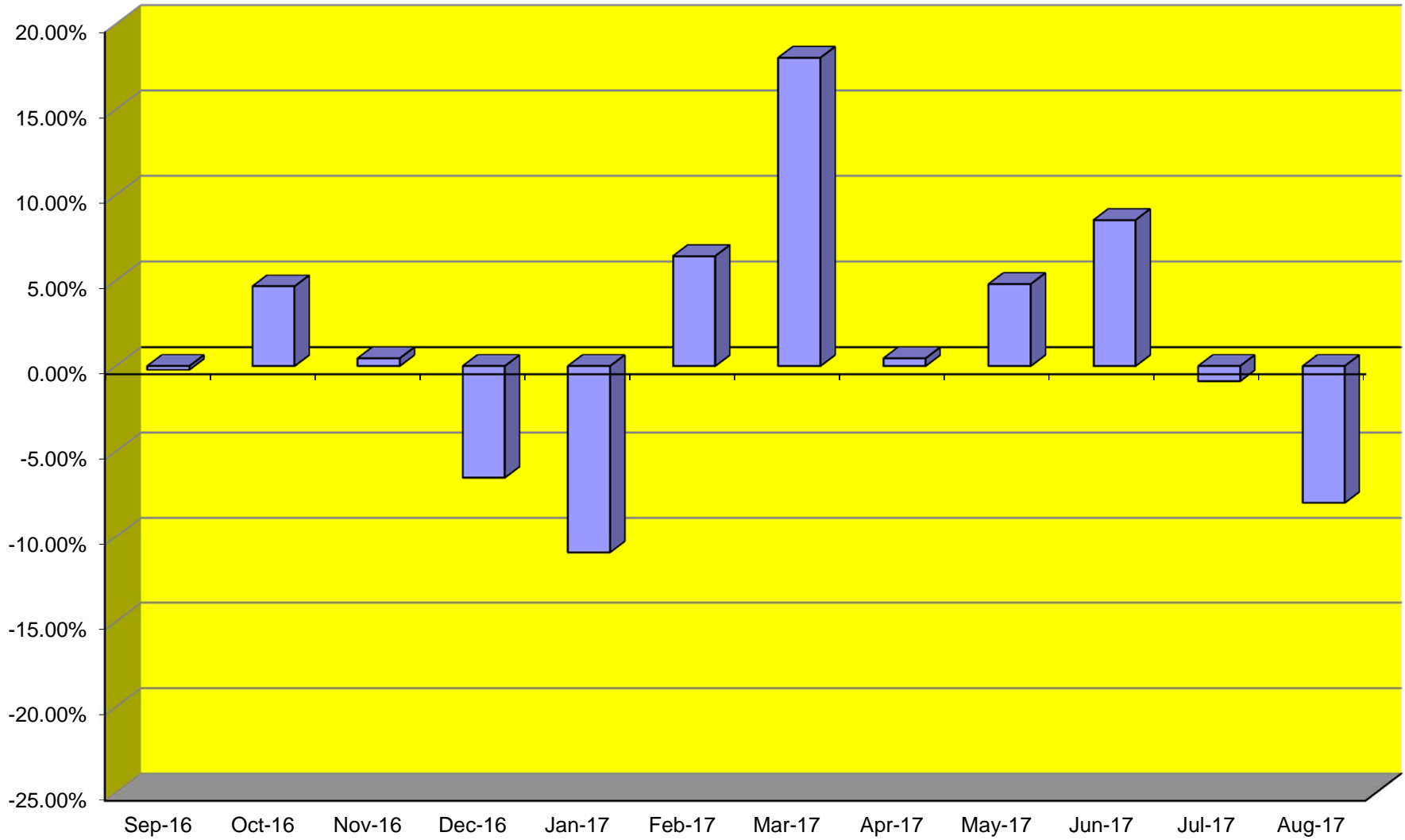
TOTAL CARGO POUNDAGE - AUSTIN, TEXAS



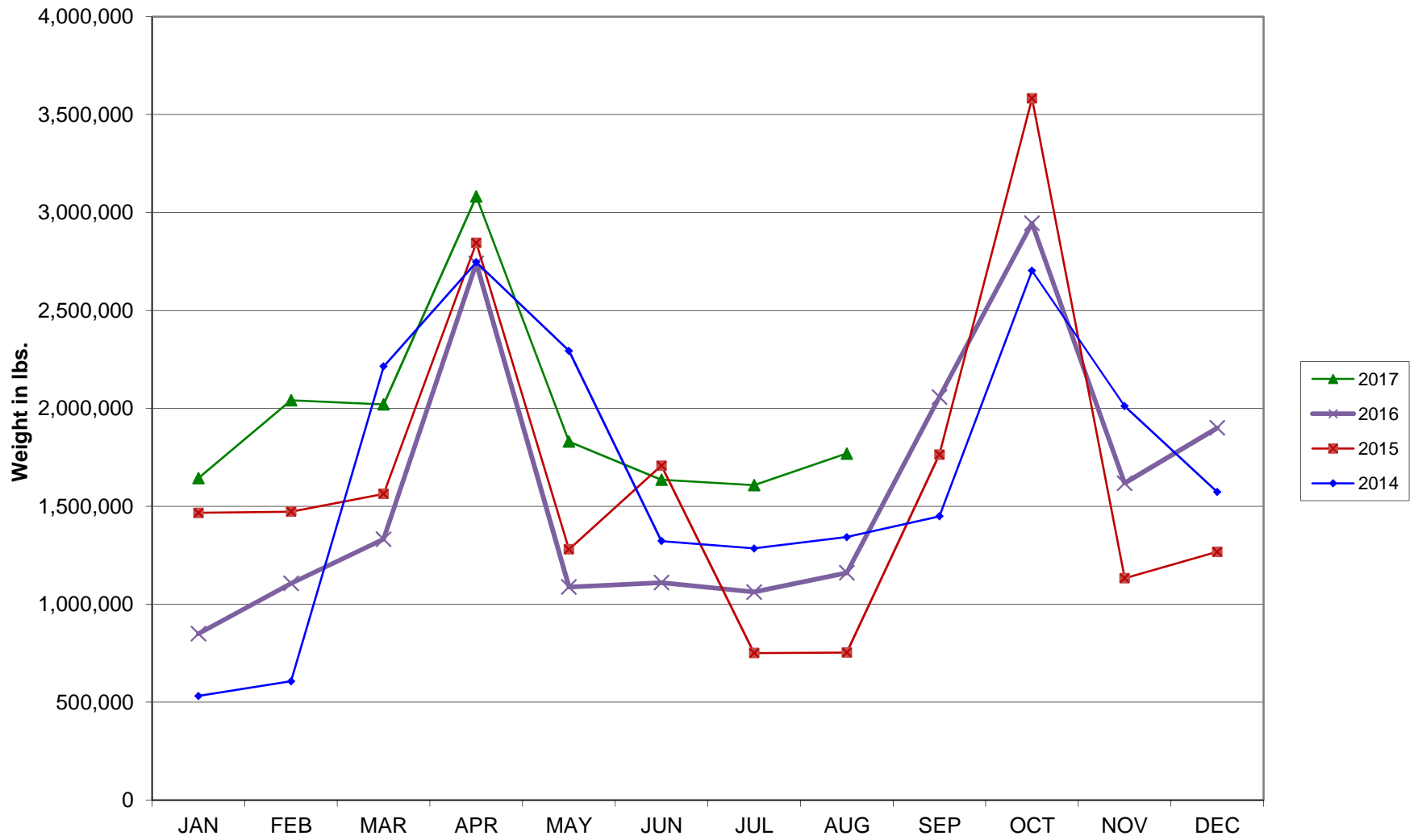
Average Daily Passengers



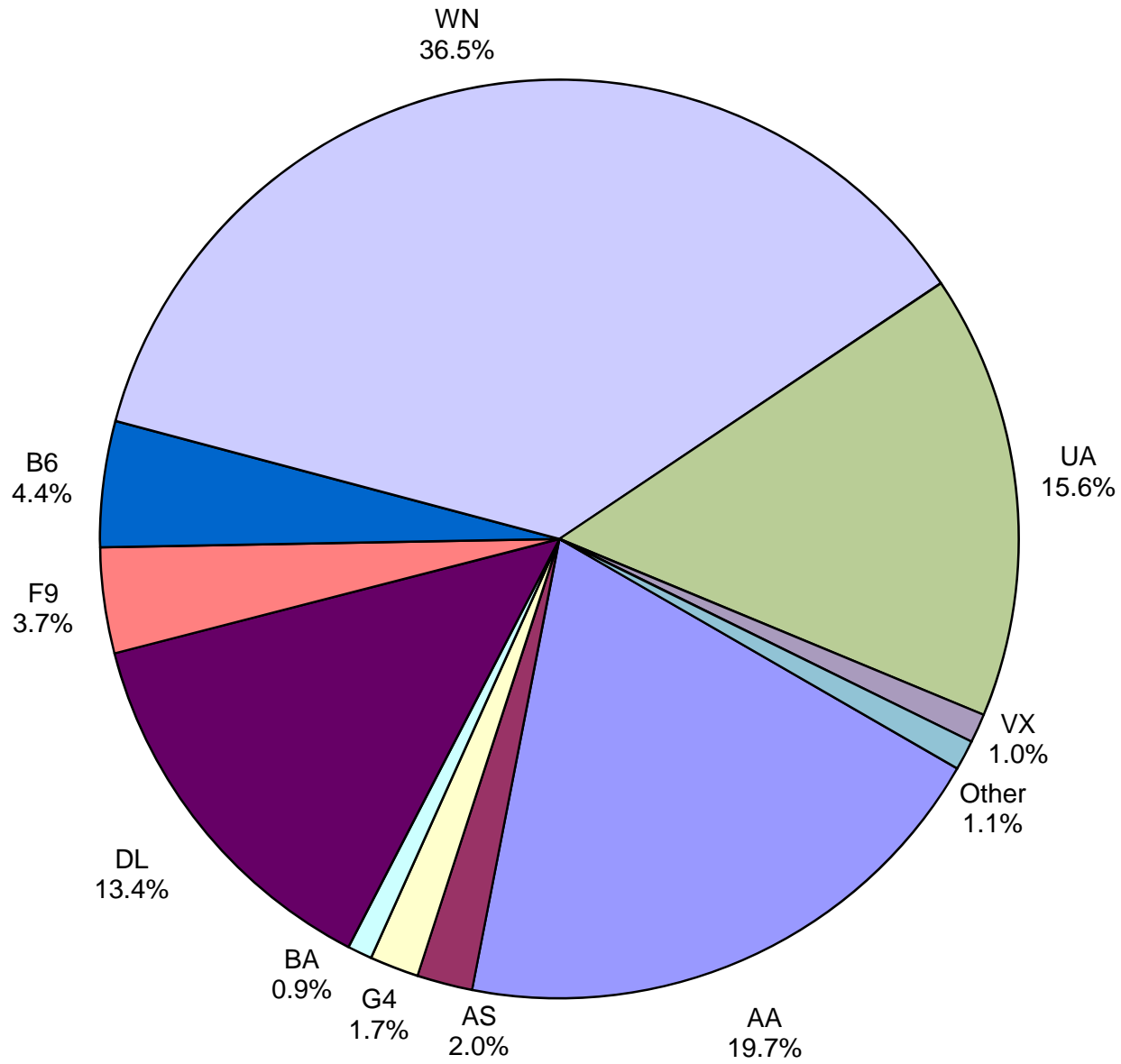
Monthly % Change in Average Daily Passengers



HISTORY OF INTERNATIONAL AIR CARGO



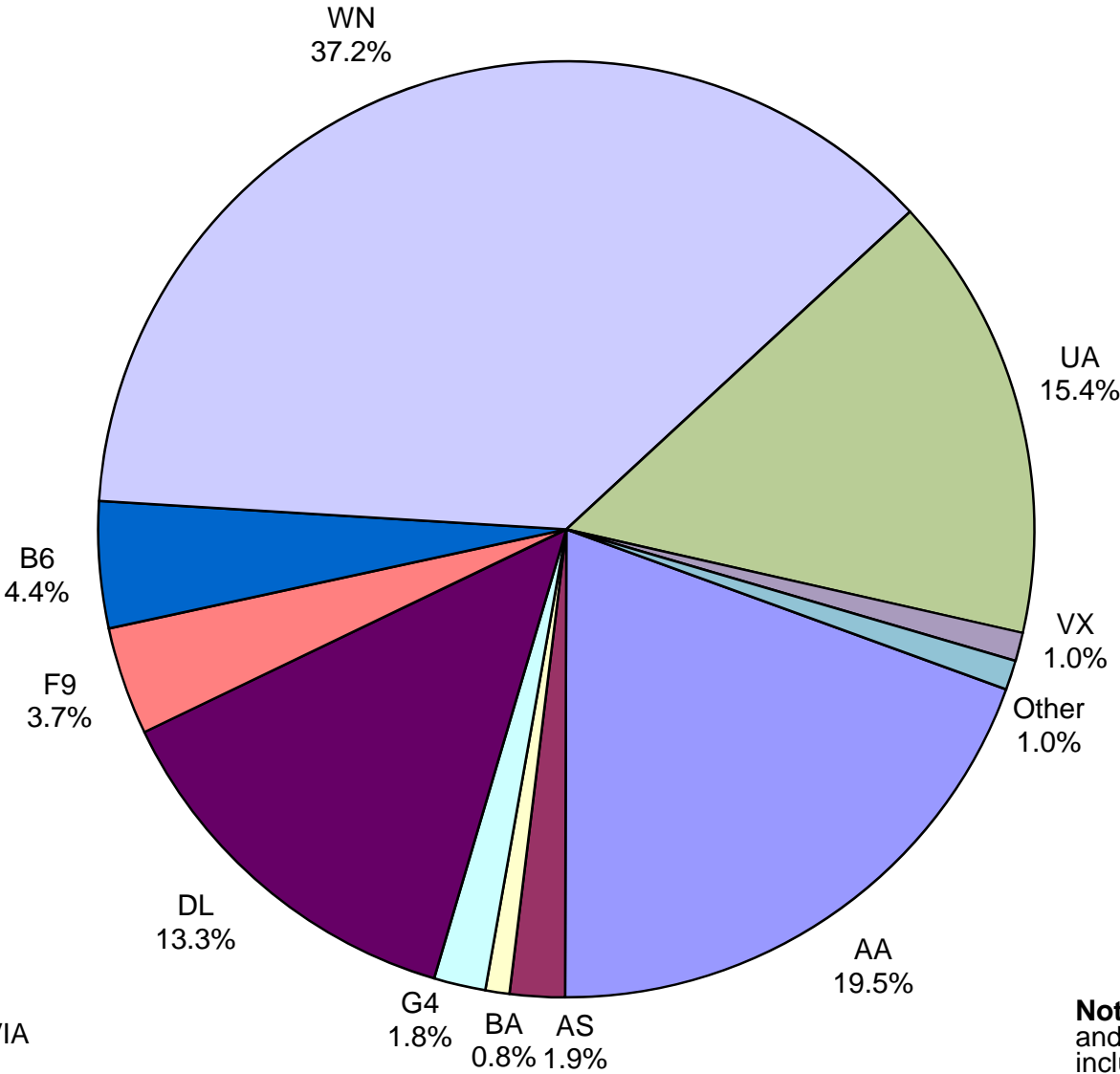
Total Passengers August 2017



Other: Aeromexico, Air Canada LLC, Condor Airlines, Sun Country, Swift Air, VIA Airlines and Volaris

Note: American, Delta and United Airlines percentages include Affiliates.

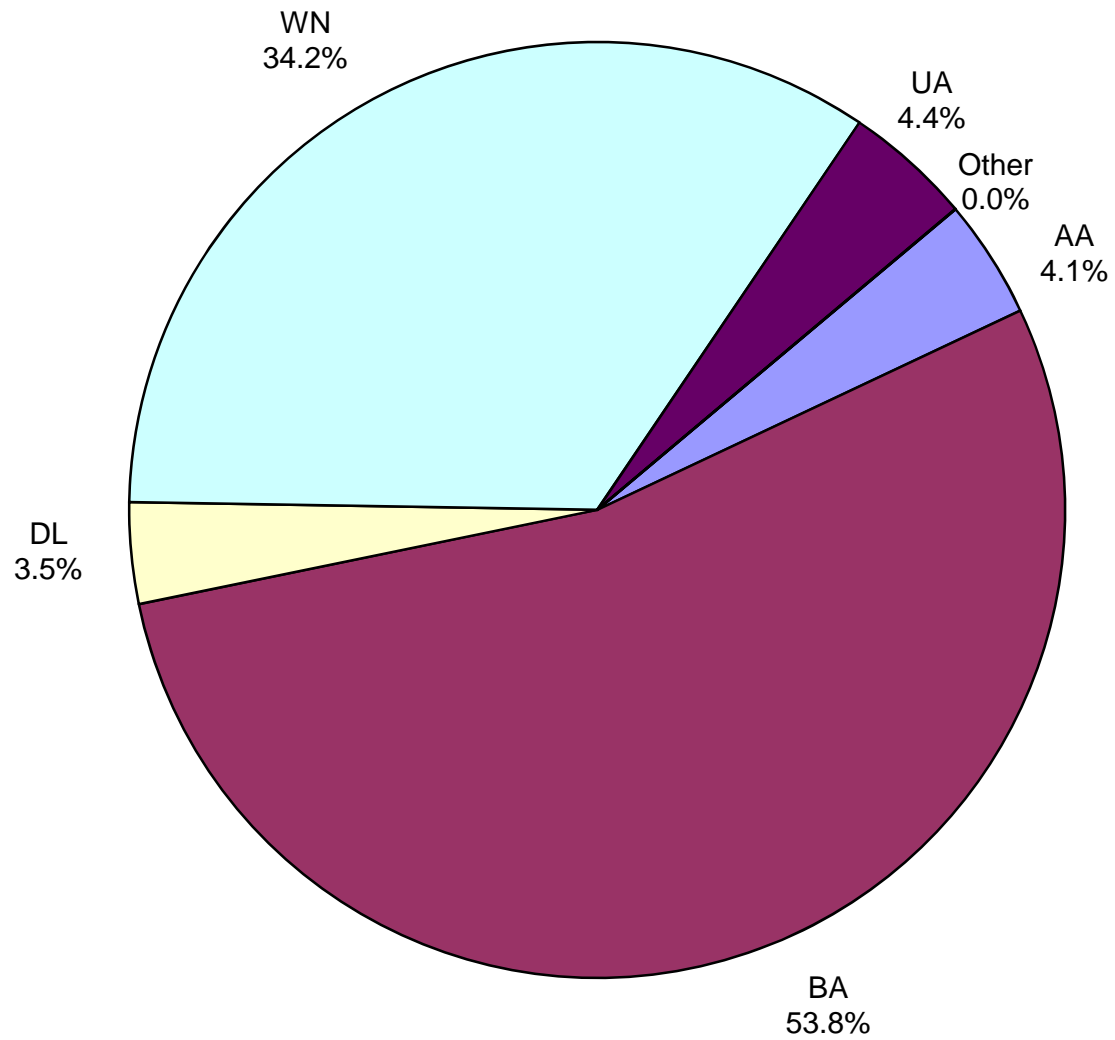
**All Passenger Carriers
Enplaned Revenue Passengers
August 2017**



Other: Aeromexico, Air Canada, Condor Airlines, Sun Country, VIA Airlines and Volaris

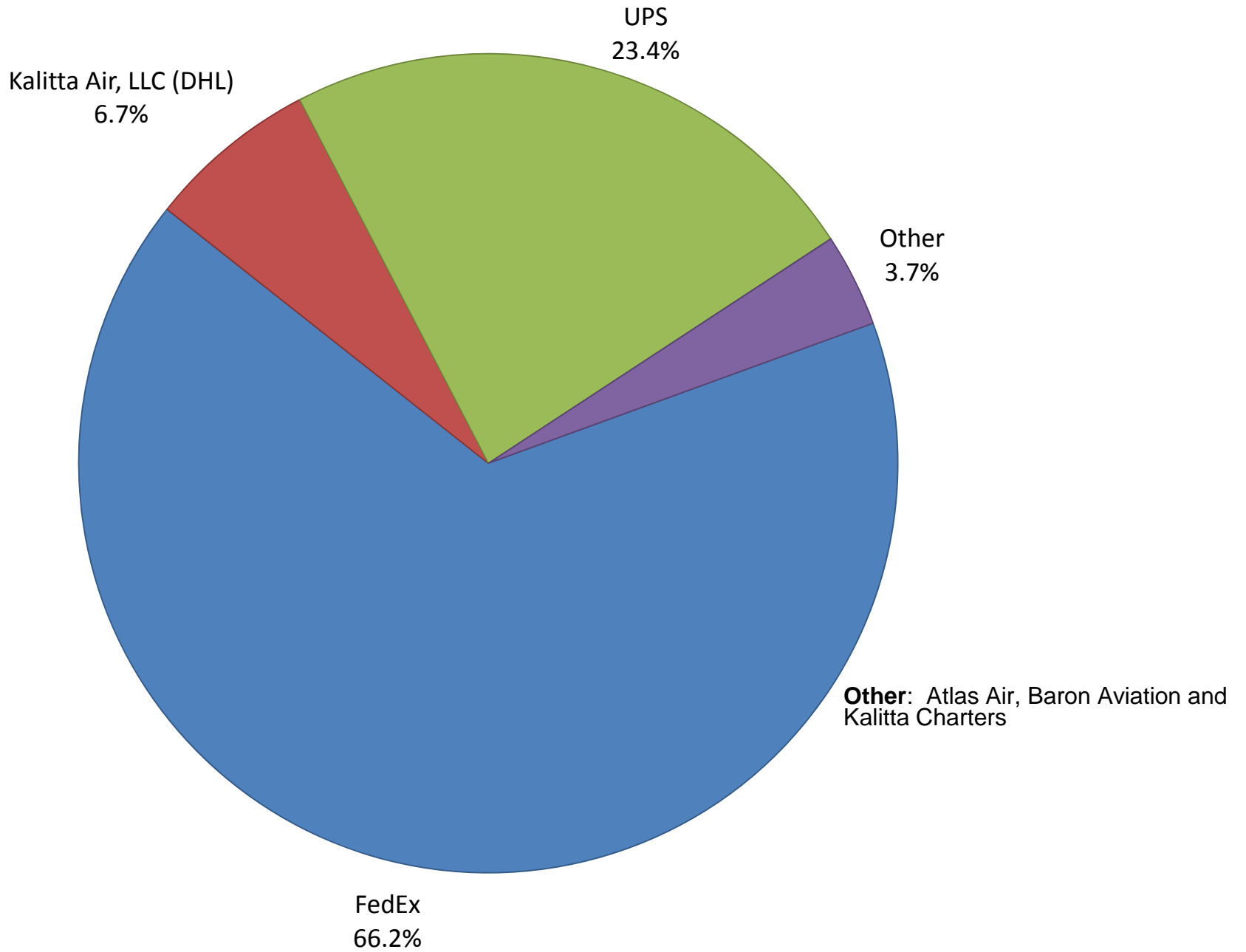
Note: American/US Airways, Delta and United Airlines percentages include Affiliates.

**AUS Belly Freight Market Shares
August 2017**

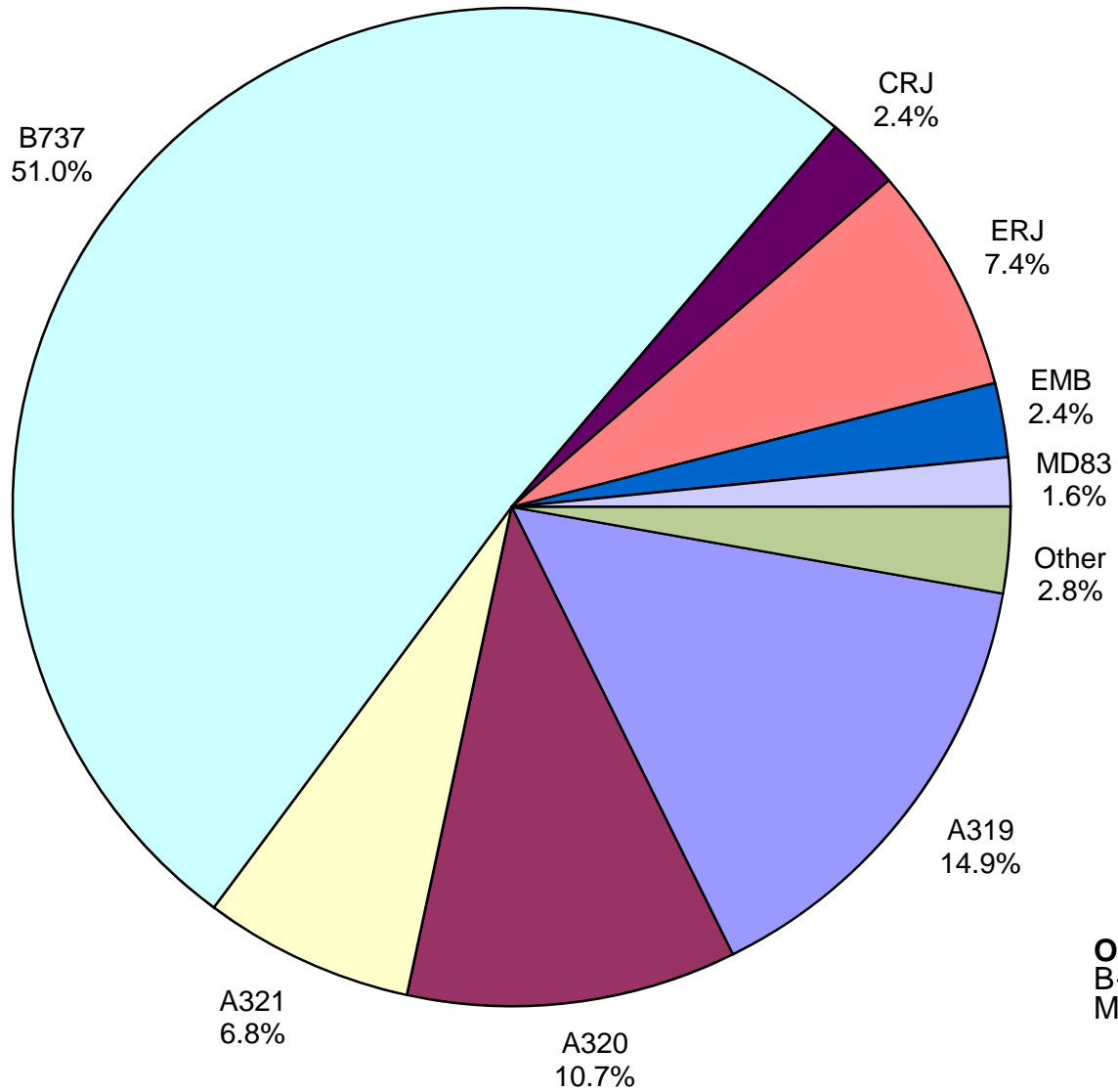


Other = Alaska Airlines

Air Cargo Market Share August 2017

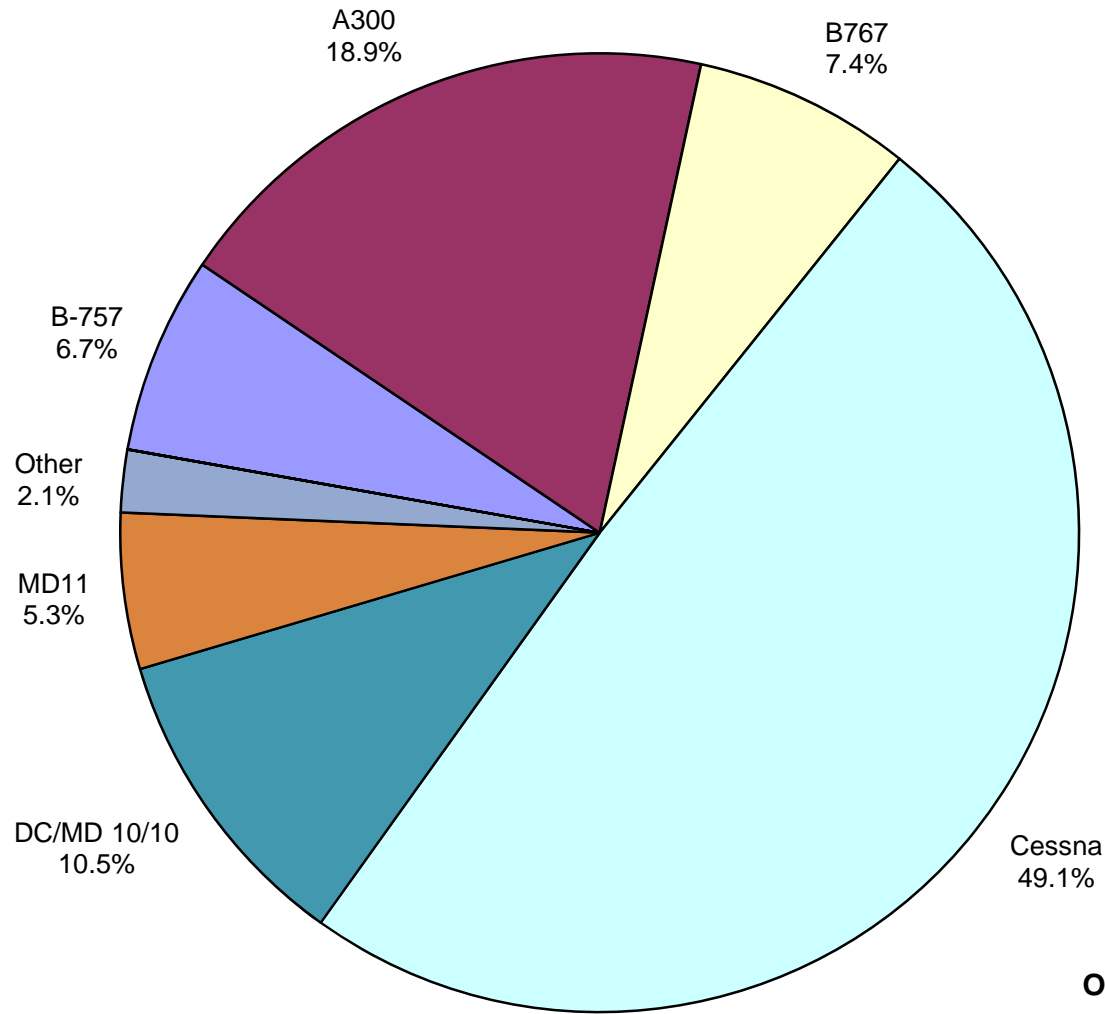


**AUS Scheduled Passenger Aircraft Fleet Mix
August 2017**



Other: B-717, B-747, B-757,
B-767, B-787-900, MD-82,
MD-88, MD-90

AUS Scheduled Cargo Aircraft Fleet Mix August 2017



Austin-Bergstrom International Airport

PAX Detail Report - August, 2017

Company	08/2017	08/2016	Period		YTD 2017	YTD 2016	YTD		2017 Share	2016 Share	Share Diff
			Difference	Change			Difference	Change			
AeroMexico Airlines	3,214	0	3,214	0.0	25,251	0	25,251	0.0	0.3	0.0	0.3
Air Canada	3,490	3,269	221	6.8	27,384	27,216	168	0.6	0.3	0.3	0.0
Alaska Airlines	23,566	21,211	2,355	11.1	168,045	150,359	17,686	11.8	1.8	1.8	0.0
Allegiant Air	20,768	14,607	6,161	42.2	181,088	115,251	65,837	57.1	2.0	1.4	0.6
American Airlines	237,581	216,452	21,129	9.8	1,729,495	1,679,079	50,416	3.0	19.0	20.4	-1.4
Ameristarjet Charter	0	0	0	0.0	0	14	-14	-100.0	0.0	0.0	0.0
Atlas Air	0	0	0	0.0	0	453	-453	-100.0	0.0	0.0	0.0
British Airways	10,481	11,071	-590	-5.3	85,346	86,903	-1,557	-1.8	0.9	1.1	-0.1
Condor Airlines	3,727	3,161	566	17.9	15,536	7,806	7,730	99.0	0.2	0.1	0.1
Delta Air Lines	161,521	128,306	33,215	25.9	1,151,599	1,014,977	136,622	13.5	12.7	12.4	0.3
Frontier Airlines	44,830	32,659	12,171	37.3	308,566	196,311	112,255	57.2	3.4	2.4	1.0
Iberia Airlines	0	0	0	0.0	245	246	-1	-0.4	0.0	0.0	0.0
JetBlue Airways	53,292	51,553	1,739	3.4	409,557	385,675	23,882	6.2	4.5	4.7	-0.2
Southwest Airlines	439,559	388,151	51,408	13.2	3,390,430	3,149,308	241,122	7.7	37.3	38.3	-1.1
Sun Country Airlines	328	100	228	228.0	3,339	3,429	-90	-2.6	0.0	0.0	0.0
Swift Air	288	0	288	0.0	994	0	994	0.0	0.0	0.0	0.0
Texas Sky	0	162	-162	-100.0	604	1,105	-501	-45.3	0.0	0.0	0.0
Turkish Airlines	0	376	-376	-100.0	0	376	-376	-100.0	0.0	0.0	0.0
United Airlines	188,682	166,186	22,496	13.5	1,485,063	1,276,043	209,020	16.4	16.3	15.5	0.8
VIA Airlines	325	0	325	0.0	1,908	0	1,908	0.0	0.0	0.0	0.0
Virgin America	12,253	14,906	-2,653	-17.8	104,762	114,891	-10,129	-8.8	1.2	1.4	-0.2
Volaris	1,436	2,030	-594	-29.3	11,019	2,030	8,989	442.8	0.1	0.0	0.1
Xtra Airways/Casino Express	0	296	-296	-100.0	136	1,167	-1,031	-88.3	0.0	0.0	0.0
Report Totals	1,205,341	1,054,496	150,845	14.3%	9,100,367	8,212,639	887,728	10.8%			

Statistics Included in Report:

Domestic Passengers:	Enplaned Revenue, Deplaned Revenue, Enplaned Non-Revenue, Deplaned Non-Revenue
International Passengers:	Enplaned Revenue, Deplaned Revenue, Enplaned Non-Revenue, Deplaned Non-Revenue
International Pre-Cleared Passengers:	Enplaned Revenue, Deplaned Revenue, Enplaned Non-Revenue, Deplaned Non-Revenue
South Terminal Domestic Passengers:	Enplaned Revenue, Deplaned Revenue, Enplaned Non-Revenue, Deplaned Non-Revenue

Austin-Bergstrom International Airport

Summary Landing Report

Landing Type: Total

Month	2017		2016		2015		% Change 2017 - 2016		% Change 2016 - 2015	
	Count	Weight	Count	Weight	Count	Weight	Count	Weight	Count	Weight
January	4,768	612,688,871	4,622	560,718,408	4,480	530,688,382	3.16%	9.27%	3.17%	5.66%
February	4,357	552,711,639	4,387	527,452,920	3,992	477,489,019	-0.68%	4.79%	9.89%	10.46%
March	5,307	685,661,659	5,151	639,655,137	4,872	584,604,521	3.03%	7.19%	5.73%	9.42%
April	5,179	689,402,051	4,892	614,643,711	4,875	593,462,176	5.87%	12.16%	0.35%	3.57%
May	5,529	736,484,083	5,096	630,853,941	5,161	625,876,151	8.50%	16.74%	-1.26%	0.80%
June	5,603	752,628,599	5,179	651,537,449	5,239	644,690,908	8.19%	15.52%	-1.15%	1.06%
July	5,698	763,088,836	5,233	663,015,597	5,503	676,131,170	8.89%	15.09%	-4.91%	-1.94%
August	5,490	741,110,019	5,181	660,099,361	5,277	652,770,571	5.96%	12.27%	-1.82%	1.12%
September			4,738	623,397,035	4,833	598,547,454			-1.97%	4.15%
October			4,923	649,182,343	4,891	611,952,269			0.65%	6.08%
November			4,775	624,303,554	4,815	605,234,834			-0.83%	3.15%
December			4,893	629,611,090	5,100	633,215,540			-4.06%	-0.57%
Totals for Selected Period	41,931	5,533,775,757	39,741	4,947,976,524	39,399	4,785,712,898	5.51%	11.84%	0.87%	3.39%
Yearly Totals	41,931	5,533,775,757	59,070	7,474,470,546	59,038	7,234,662,995			0.05%	3.31%