

**Austin-Bergstrom International Airport
Aviation Activity Report
Calendar Year 2017 vs 2016**

Combined Terminals

	10/2017	10/2016	Percent Change	01/2017 - 10/2017	01/2016 - 10/2016	Percent Change
ABIA						
Total Passenger Activity						
Domestic Enplaned Revenue	594,146	533,081	11.46	5,389,039	4,943,243	9.02
Domestic Deplaned Revenue	599,364	529,815	13.13	5,371,787	4,941,877	8.70
International Enplaned Revenue	8,537	6,333	34.80	119,988	91,105	31.70
International Deplaned Revenue	8,849	7,017	26.11	121,125	97,716	23.96
Domestic Enplaned Non-Revenue	13,524	10,621	27.33	135,486	110,713	22.38
Domestic Deplaned Non-Revenue	12,999	10,055	29.28	129,183	110,777	16.62
International Enplaned Non-Revenue	88	49	79.59	975	785	24.20
International Deplaned Non-Revenue	84	63	33.33	841	802	4.86
Intl Enplaned Pre-Cleared Revenue	1,867	2,014	-7.30	16,754	16,369	2.35
Intl Deplaned Pre-Cleared Revenue	1,985	2,198	-9.69	17,628	18,290	-3.62
Intl Enplaned Pre-Cleared Non-Revenue	29	20	45.00	230	258	-10.85
Intl Deplaned Pre-Cleared Non-Revenue	20	18	11.11	234	280	-16.43
South Terminal Domestic Enplaned Revenue	13,699	0	0.00	82,842	0	0.00
South Terminal Domestic Deplaned Revenue	13,944	0	0.00	82,821	0	0.00
South Terminal Domestic Enplaned Non-Revenue	9	0	0.00	46	0	0.00
South Terminal Domestic Deplaned Non-Revenue	9	0	0.00	22	0	0.00
ABIA Passenger Totals	1,269,153	1,101,284	15.24	11,469,001	10,332,215	11.00
<i>ABIA Enplaned Passenger Totals</i>	<i>631,899</i>	<i>552,118</i>	<i>14.45</i>	<i>5,745,360</i>	<i>5,162,473</i>	<i>11.29</i>
<i>ABIA Deplaned Passenger Totals</i>	<i>637,254</i>	<i>549,166</i>	<i>16.04</i>	<i>5,723,641</i>	<i>5,169,742</i>	<i>10.71</i>
<i>ABIA Domestic Passenger Totals</i>	<i>1,247,694</i>	<i>1,083,572</i>	<i>15.15</i>	<i>11,191,226</i>	<i>10,106,610</i>	<i>10.73</i>
<i>ABIA International Passenger Totals</i>	<i>21,459</i>	<i>17,712</i>	<i>21.16</i>	<i>277,775</i>	<i>225,605</i>	<i>23.12</i>

CURRENT PASSENGER RECORD = 1,310,174 RECORD SET = JULY 2017

Total Aircraft Operations

Air Carrier	10,733	9,612	11.66	102,498	94,562	8.39
Commuter & Air Taxi	1,556	1,507	3.25	12,570	13,662	-7.99
Military	847	911	-7.03	8,422	9,010	-6.53
General Aviation						
Itinerant	4,637	5,085	-8.81	41,557	41,238	0.77
Local	160	278	-42.45	2,139	2,244	-4.68
Total G.A.	4,797	5,363	-10.55	43,696	43,482	0.49
Total Operations	17,933	17,393	3.10	167,186	160,716	4.03

**Austin-Bergstrom International Airport
Aviation Activity Report
Calendar Year 2017 vs 2016**

By Terminal

	10/2017	10/2016	Percent Change	01/2017 - 10/2017	01/2016 - 10/2016	Percent Change
<u>Barbara Jordan Terminal (BJT)</u>						
Passenger Activity						
Domestic Enplaned Revenue	594,146	533,081	11.46	5,389,039	4,943,243	9.02
Domestic Deplaned Revenue	599,364	529,815	13.13	5,371,787	4,941,877	8.70
International Enplaned Revenue	8,537	6,333	34.80	119,988	91,105	31.70
International Deplaned Revenue	8,849	7,017	26.11	121,125	97,716	23.96
Domestic Enplaned Non-Revenue	13,524	10,621	27.33	135,486	110,713	22.38
Domestic Deplaned Non-Revenue	12,999	10,055	29.28	129,183	110,777	16.62
International Enplaned Non-Revenue	88	49	79.59	975	785	24.20
International Deplaned Non-Revenue	84	63	33.33	841	802	4.86
Intl Enplaned Pre-Cleared Revenue	1,867	2,014	-7.30	16,754	16,369	2.35
Intl Deplaned Pre-Cleared Revenue	1,985	2,198	-9.69	17,628	18,290	-3.62
Intl Enplaned Pre-Cleared Non-Revenue	29	20	45.00	230	258	-10.85
Intl Deplaned Pre-Cleared Non-Revenue	20	18	11.11	234	280	-16.43
Barbara Jordan Terminal Passenger Totals	1,241,492	1,101,284	12.73	11,303,270	10,332,215	9.40
<i>BJT Enplaned Passenger Totals</i>	<i>618,191</i>	<i>552,118</i>	<i>11.97</i>	<i>5,662,472</i>	<i>5,162,473</i>	<i>9.69</i>
<i>BJT Deplaned Passenger Totals</i>	<i>623,301</i>	<i>549,166</i>	<i>13.50</i>	<i>5,640,798</i>	<i>5,169,742</i>	<i>9.11</i>
<i>BJT Domestic Passenger Totals</i>	<i>1,220,033</i>	<i>1,083,572</i>	<i>12.59</i>	<i>11,025,495</i>	<i>10,106,610</i>	<i>9.09</i>
<i>BJT International Passenger Totals</i>	<i>21,459</i>	<i>17,712</i>	<i>21.16</i>	<i>277,775</i>	<i>225,605</i>	<i>23.12</i>
<u>South Terminal (ST)</u>						
Passenger Activity						
South Terminal Domestic Enplaned Revenue	13,699	0	0.00	82,842	0	0.00
South Terminal Domestic Deplaned Revenue	13,944	0	0.00	82,821	0	0.00
South Terminal Domestic Enplaned Non-Revenue	9	0	0.00	46	0	0.00
South Terminal Domestic Deplaned Non-Revenue	9	0	0.00	22	0	0.00
South Terminal Passenger Totals	27,661	0	0.00	165,731	0	0.00
<i>ST Enplaned Passenger Totals</i>	<i>13,708</i>	<i>0</i>	<i>0</i>	<i>82,888</i>	<i>0</i>	<i>0</i>
<i>ST Deplaned Passenger Totals</i>	<i>13,953</i>	<i>0</i>	<i>0</i>	<i>82,843</i>	<i>0</i>	<i>0</i>

**Austin-Bergstrom International Airport
Aviation Activity Report
Calendar Year 2017 vs 2016**

	10/2017	10/2016	Percent Change	01/2017 - 10/2017	01/2016 - 10/2016	Percent Change
<u>Total Cargo Activity</u>						
Mail						
Domestic Enplaned Mail	179,032	153,359	16.74	1,918,034	1,324,797	44.78
Domestic Deplaned Mail	423,942	322,353	31.51	3,744,158	2,384,074	57.05
International Enplaned Mail	0	0	0.00	0	0	0.00
International Deplaned Mail	0	0	0.00	2	2	0.00
South Terminal-Intl Enplaned Mail	0	0	0.00	0	0	0.00
South Terminal-Intl Deplaned Mail	0	0	0.00	0	0	0.00
Mail Totals	602,974	475,712	26.75	5,662,194	3,708,873	52.67
Cargo						
Domestic Enplaned Cargo	4,794,379	5,132,008	-6.58	51,593,955	51,466,431	0.25
Domestic Deplaned Cargo	7,229,839	7,610,130	-5.00	70,490,368	65,431,696	7.73
International Enplaned Cargo	2,039,517	1,698,107	20.11	7,944,423	5,062,747	56.92
International Deplaned Cargo	950,066	579,758	63.87	4,579,025	3,935,605	16.35
South Terminal-Intl Enplaned Cargo	0	0	0.00	0	0	0.00
South Terminal-Intl Deplaned Cargo	0	0	0.00	0	0	0.00
Cargo Totals	15,013,801	15,020,003	-0.04	134,607,771	125,896,479	6.92
Belly Freight						
Domestic Enplaned Belly Freight	331,870	258,811	28.23	2,828,523	2,397,495	17.98
Domestic Deplaned Belly Freight	525,235	432,881	21.33	5,107,999	4,616,769	10.64
International Enplaned Belly Freight	466,213	49,903	834.24	2,527,915	1,385,969	82.39
International Deplaned Belly Freight	796,697	617,472	29.03	7,212,576	5,067,633	42.33
South Terminal-Intl Enplaned Belly Freight	0	0	0.00	0	0	0.00
South Terminal-Intl Deplaned Belly Freight	0	0	0.00	0	0	0.00
Belly Freight Totals	2,120,015	1,359,067	55.99	17,677,013	13,467,866	31.25
Cargo Totals (Mail, Cargo, Belly Freight)	17,736,790	16,854,782	5.23	157,946,978	143,073,218	10.40
<i>Enplaned Cargo Totals</i>	<i>7,811,011</i>	<i>7,292,188</i>	<i>7.11</i>	<i>66,812,850</i>	<i>61,637,439</i>	<i>8.40</i>
<i>Deplaned Cargo Totals</i>	<i>9,925,779</i>	<i>9,562,594</i>	<i>3.80</i>	<i>91,134,128</i>	<i>81,435,779</i>	<i>11.91</i>
<i>Domestic Cargo Totals</i>	<i>13,484,297</i>	<i>13,909,542</i>	<i>-3.06</i>	<i>135,683,037</i>	<i>127,621,262</i>	<i>6.32</i>
<i>International Cargo Totals</i>	<i>4,252,493</i>	<i>2,945,240</i>	<i>44.39</i>	<i>22,263,941</i>	<i>15,451,956</i>	<i>44.08</i>

CURRENT CARGO RECORD = 40,215,518

RECORD SET = MARCH 2001

AUS – Airline Codes

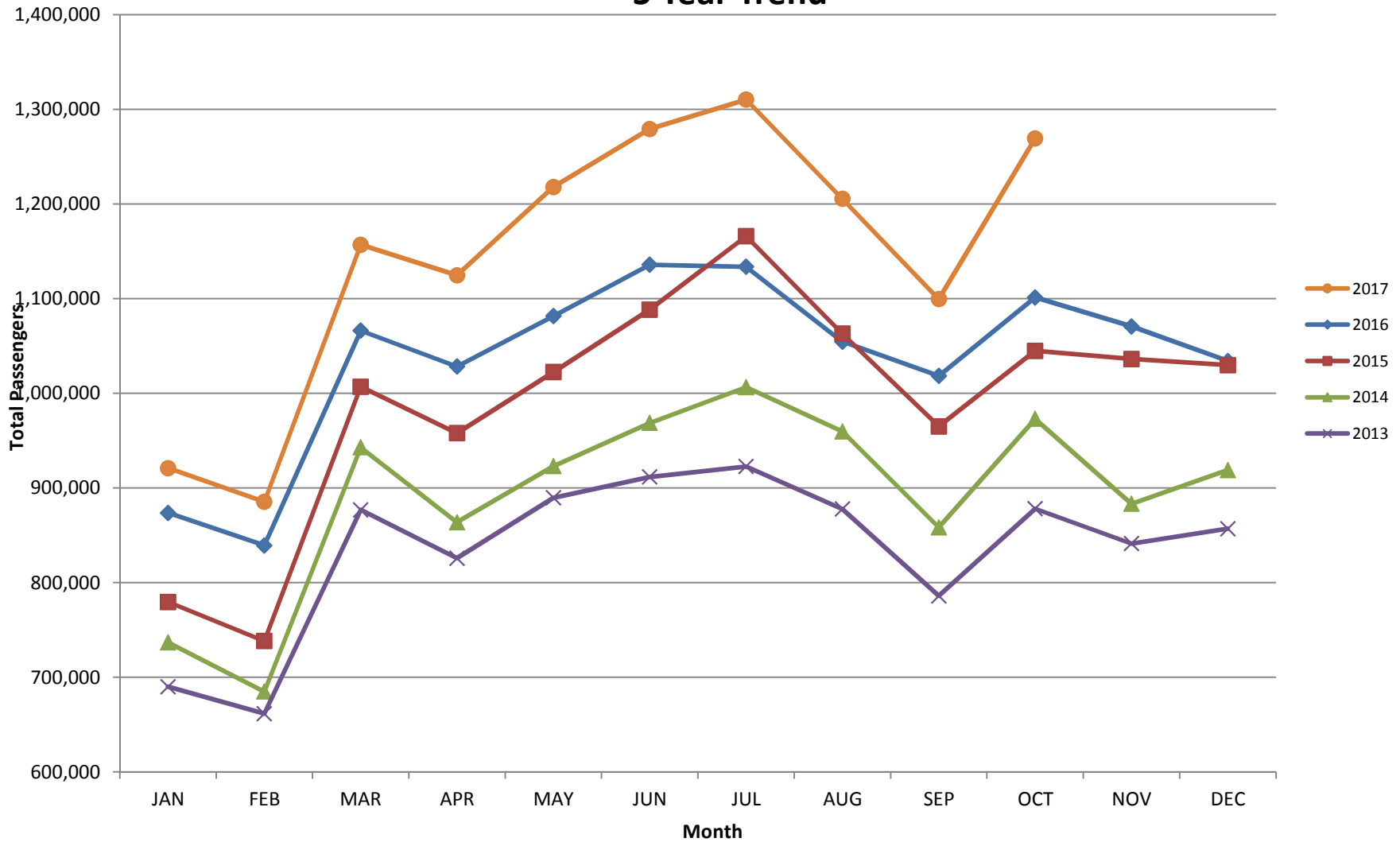
October 2017

<u>Code</u>	<u>Carrier</u>
AM	AeroMexico Airlines
AC	Air Canada
AS	Alaska Airlines, Inc.
G4	Allegiant Air, LLC
AA	American Airlines, Inc.
BA	British Airways Plc
Y4	Concesionaria Vuela Compañía de Aviación, S.A.P.I. de C.V dba Volaris
DE	Condor Airlines
DL	Delta Airlines
7Q	Elite Airways, LLC
F9	Frontier Airlines
B6	JetBlue Airways Corp.
LL	Miami Air International
WN	Southwest Airlines
SY	Sun Country Airlines/ MN Airlines, LLC
UA	United Airlines, Inc.
VC	VIA Airlines
VX	Virgin America Inc.

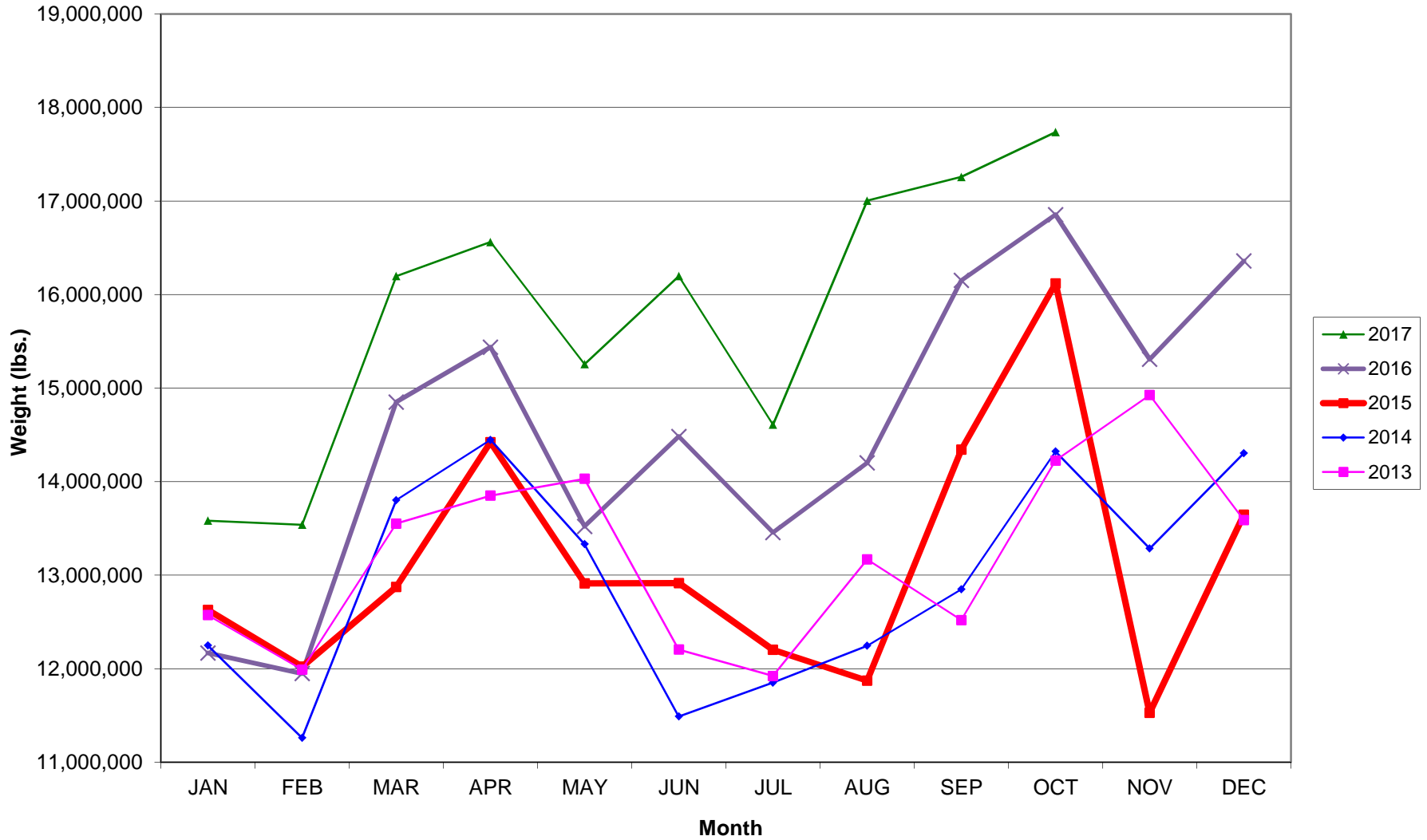
.

AUSTIN PASSENGER TRAFFIC

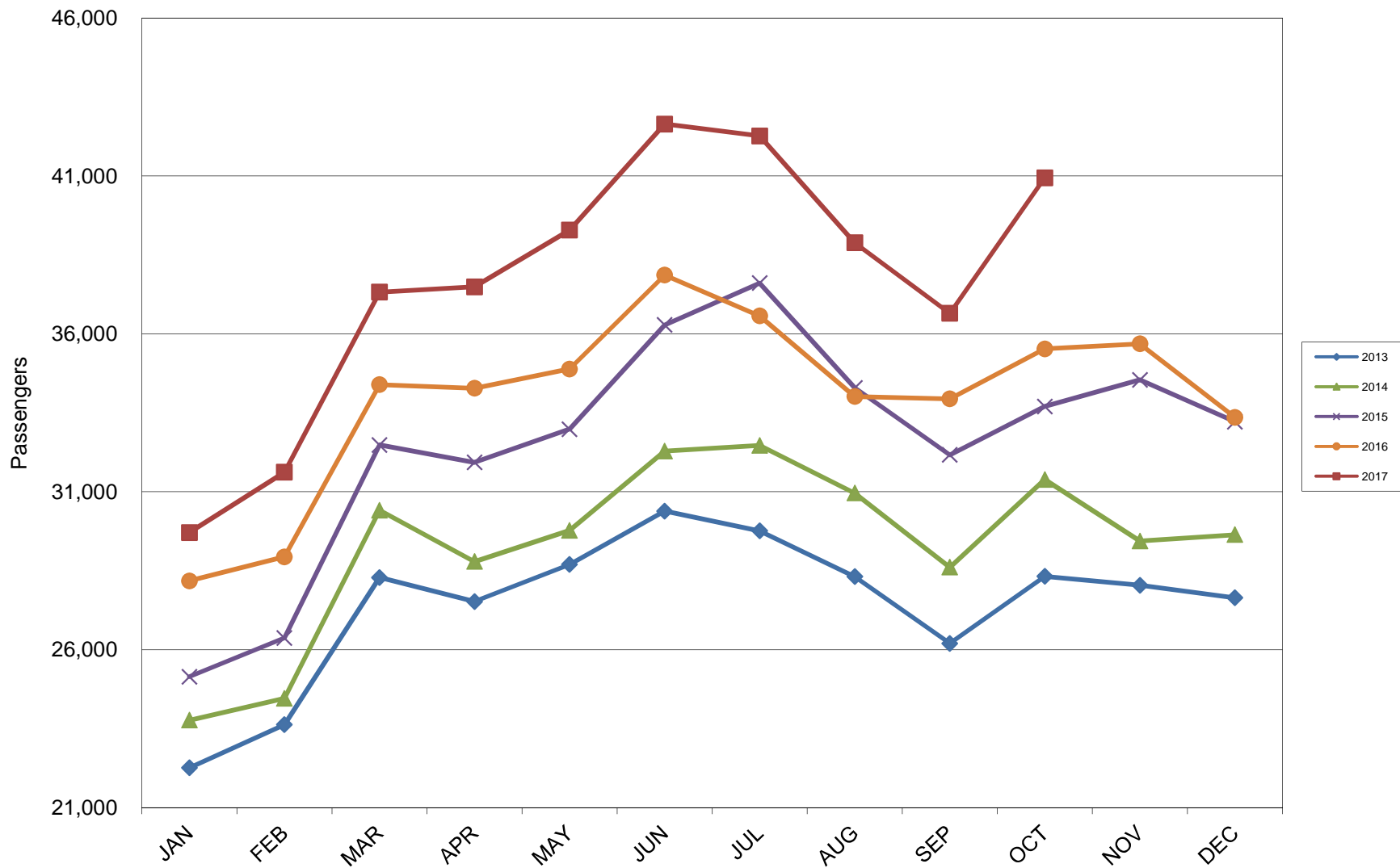
5 Year Trend



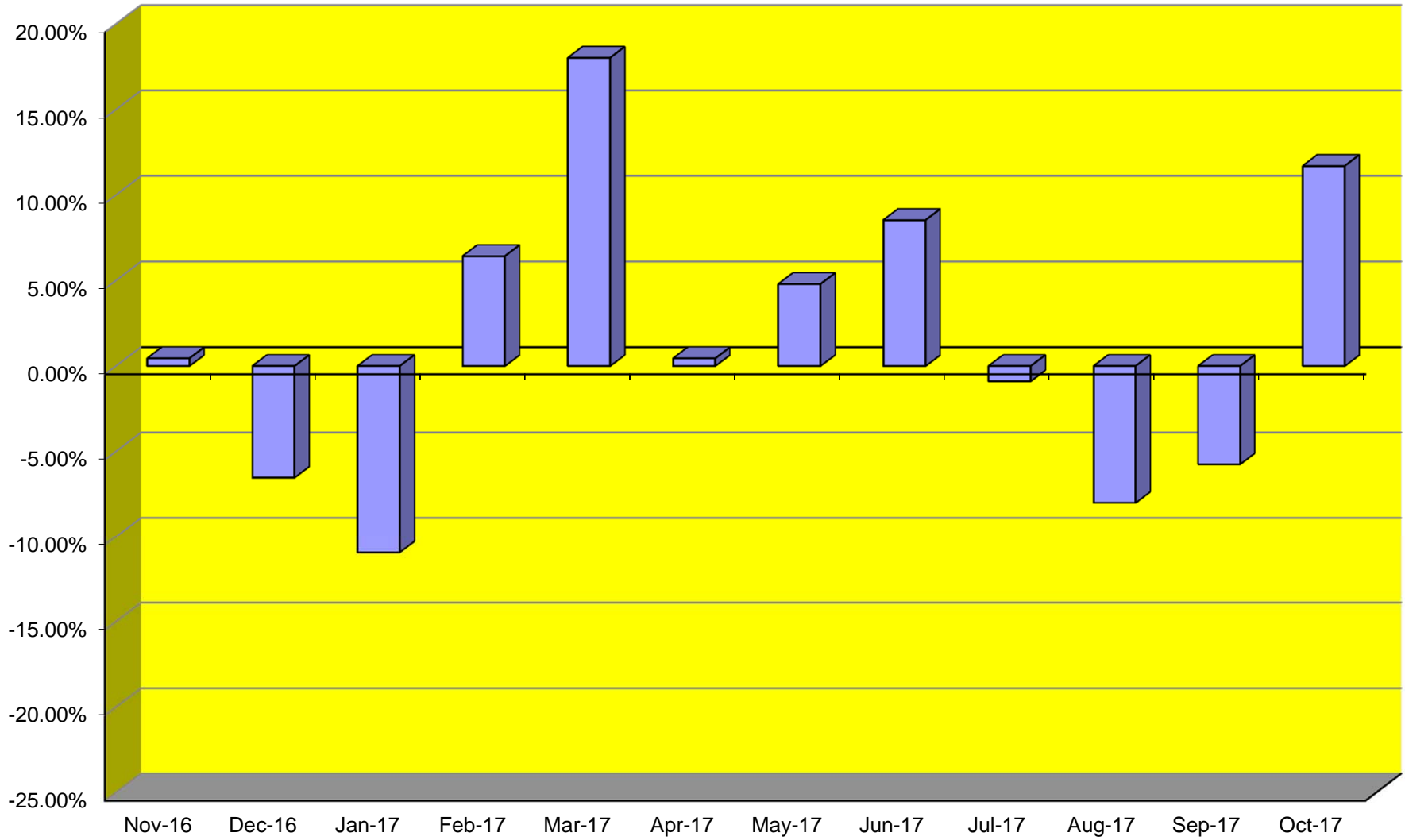
TOTAL CARGO POUNDAGE - AUSTIN, TEXAS



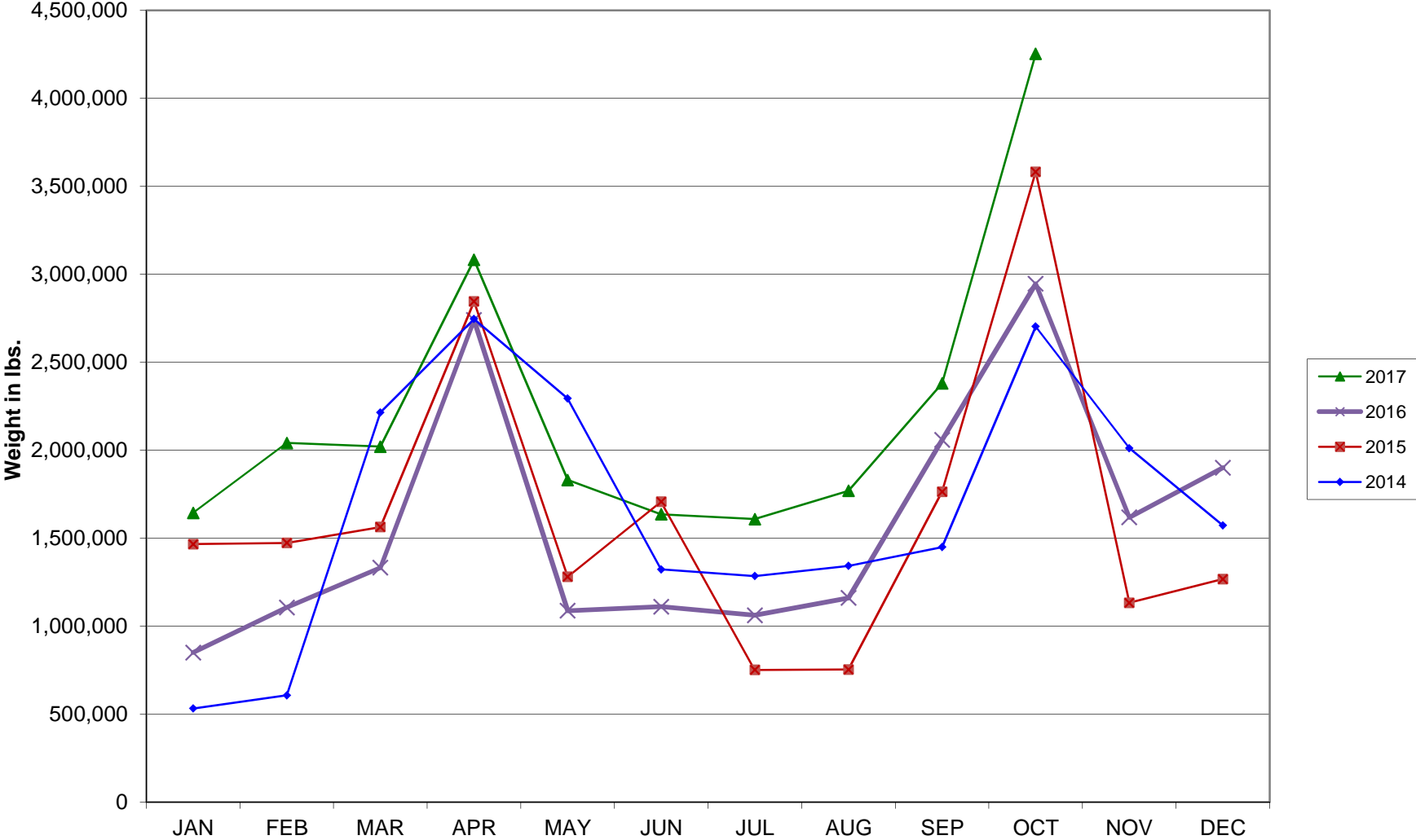
Average Daily Passengers



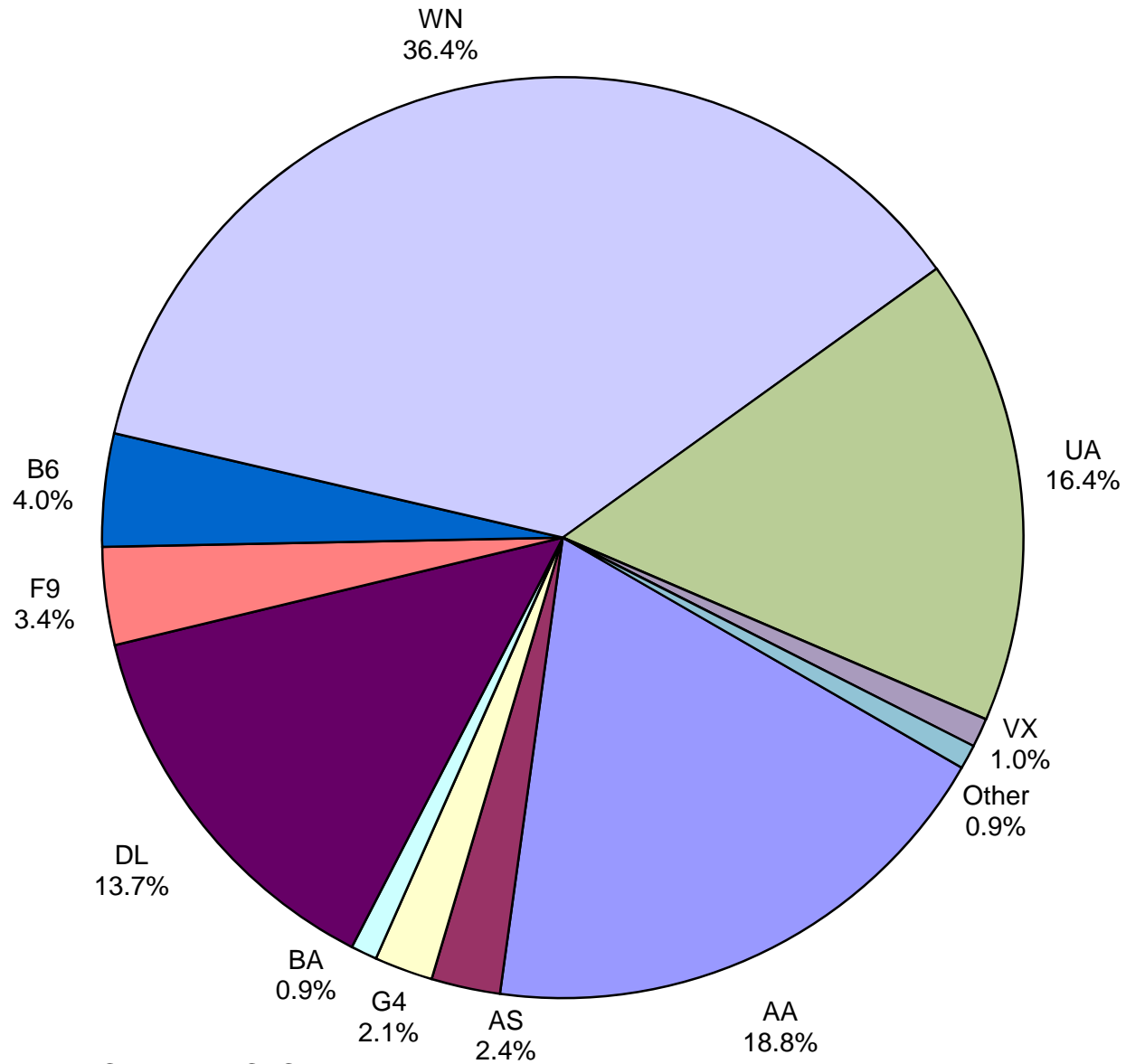
Monthly % Change in Average Daily Passengers



HISTORY OF INTERNATIONAL AIR CARGO



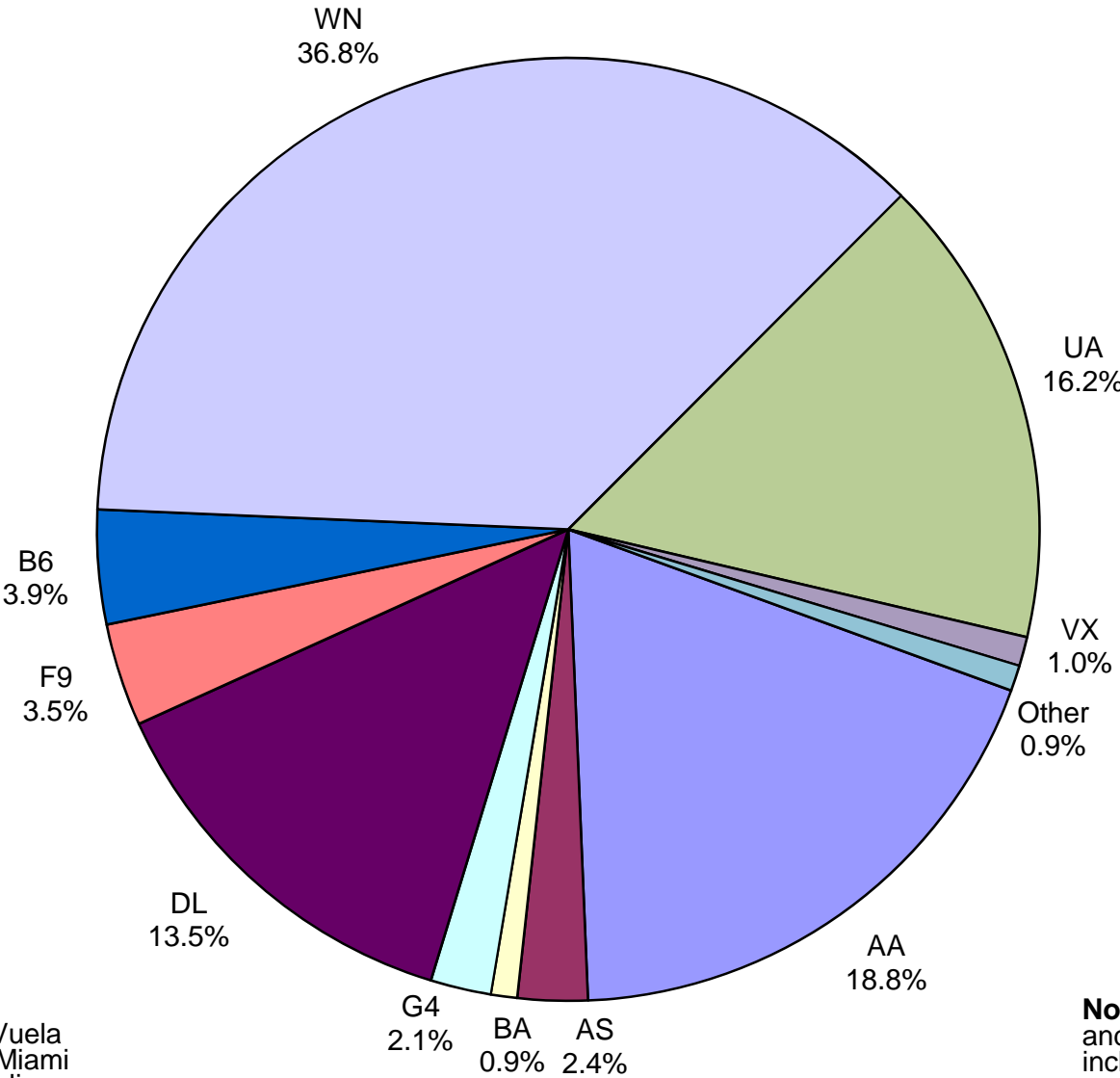
Total Passengers October 2017



Other: Aeromexico, Air Canada LLC, Condor Airlines, Elite Airways, LLC, Miami Air Int'l, Sun Country, VIA Airlines and Concesionaria Vuela dba Volaris

Note: American, Delta and United Airlines percentages include Affiliates.

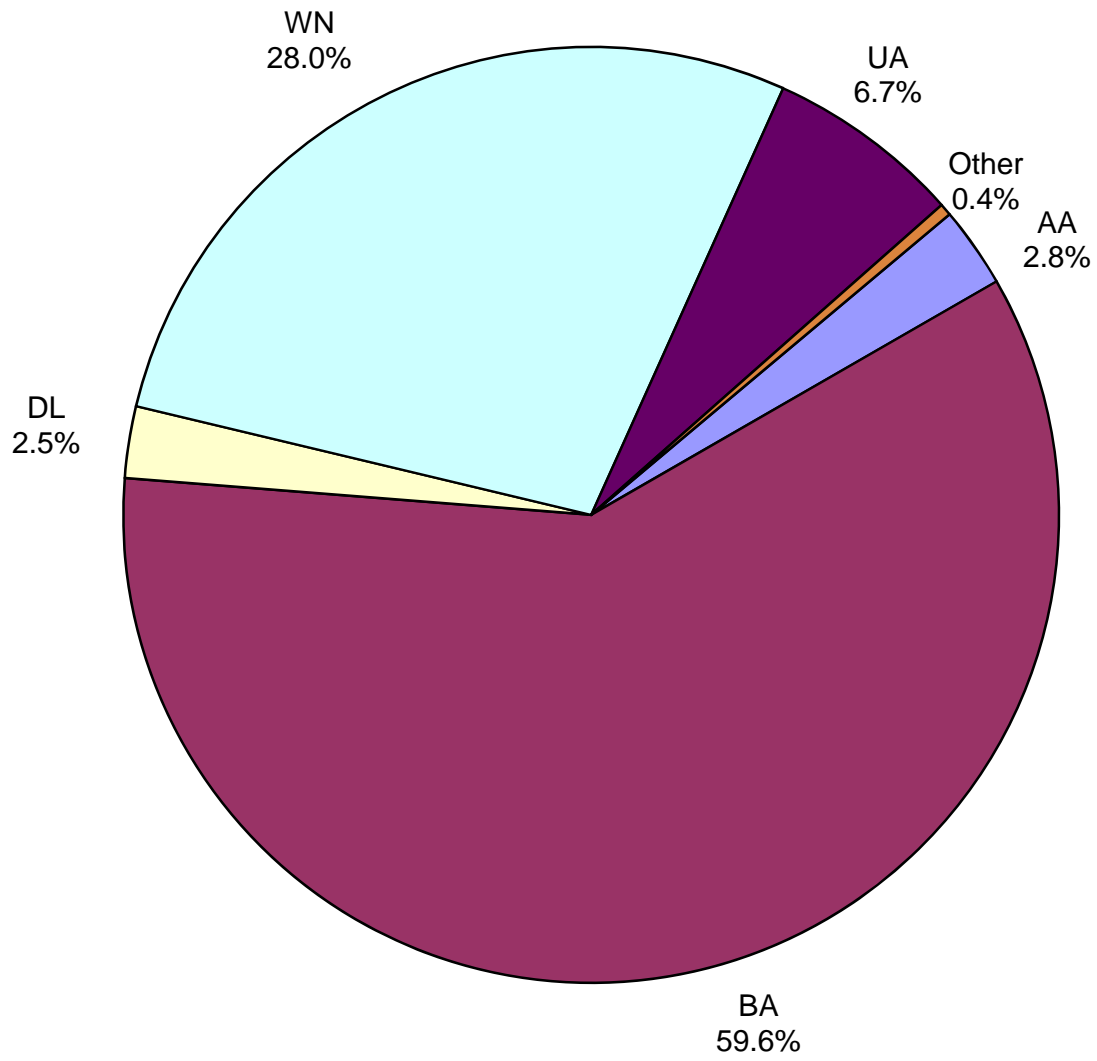
**All Passenger Carriers
Enplaned Revenue Passengers
October 2017**



Other: Aeromexico, Air Canada, Condor Airlines, Concesionaria Vuela dba Volaris, Elite Airways, LLC, Miami Air Int'l, Sun Country and VIA Airlines

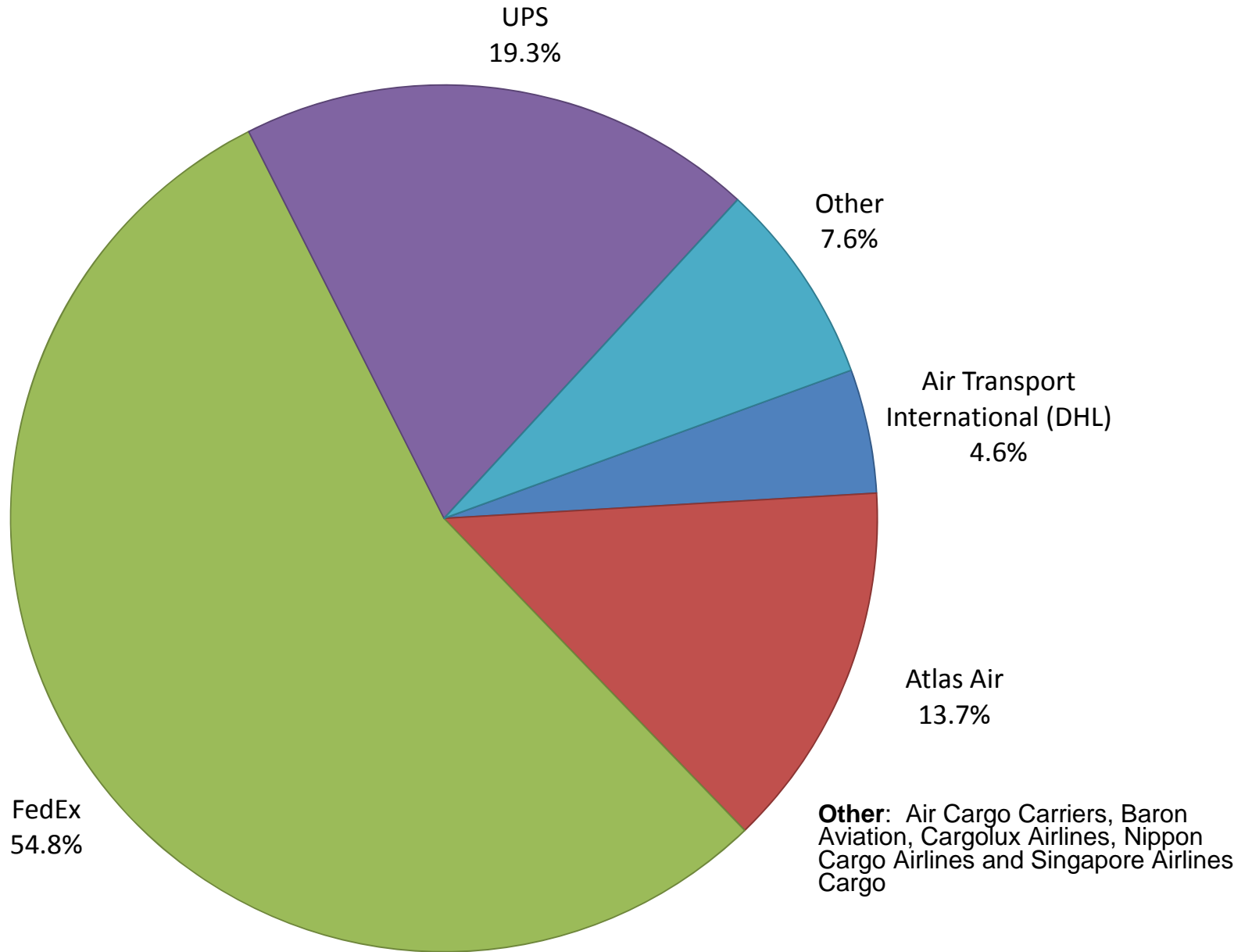
Note: American/US Airways, Delta and United Airlines percentages include Affiliates.

**AUS Belly Freight Market Shares
October 2017**

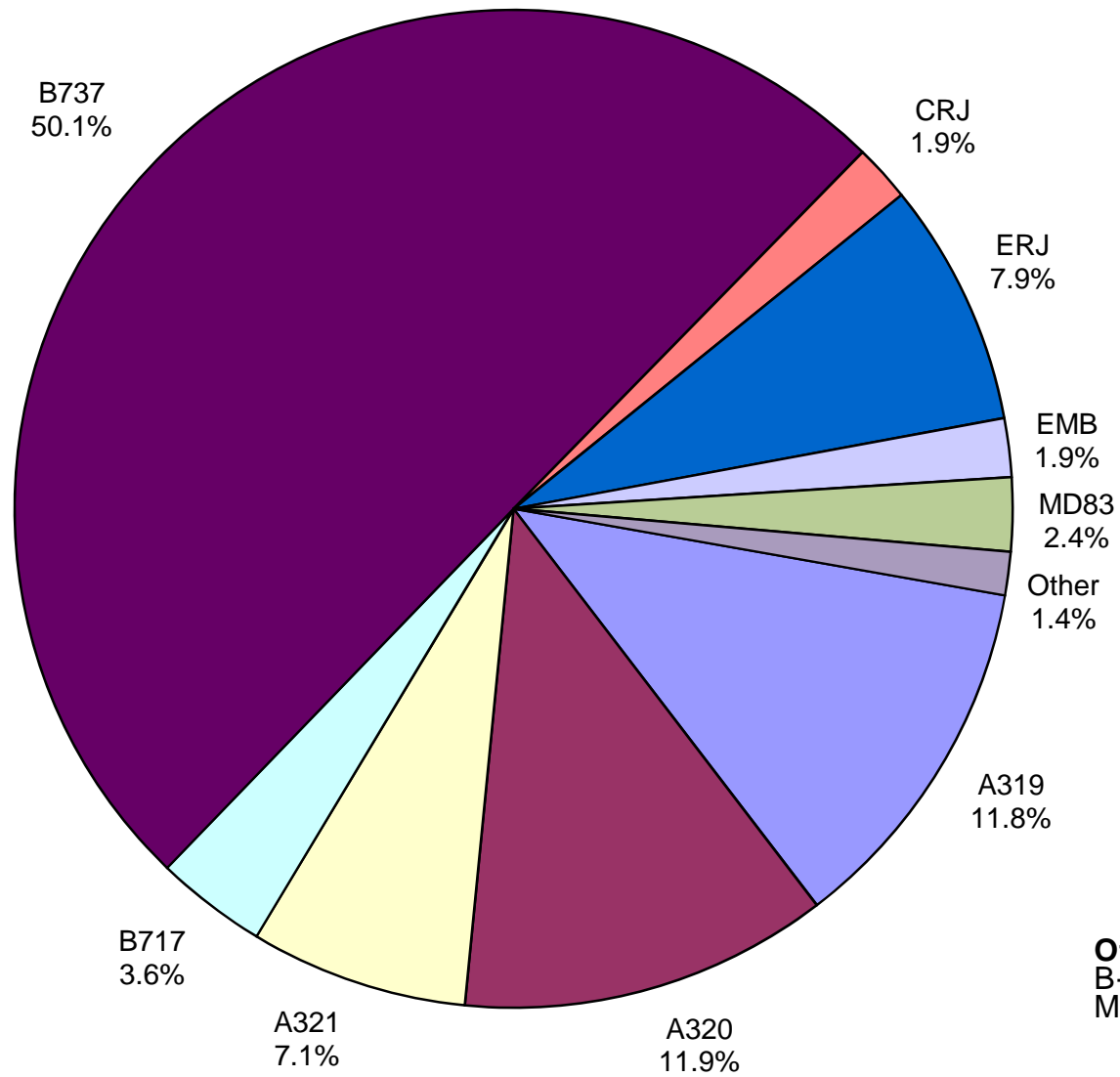


Other = Alaska Airlines

Air Cargo Market Share October 2017

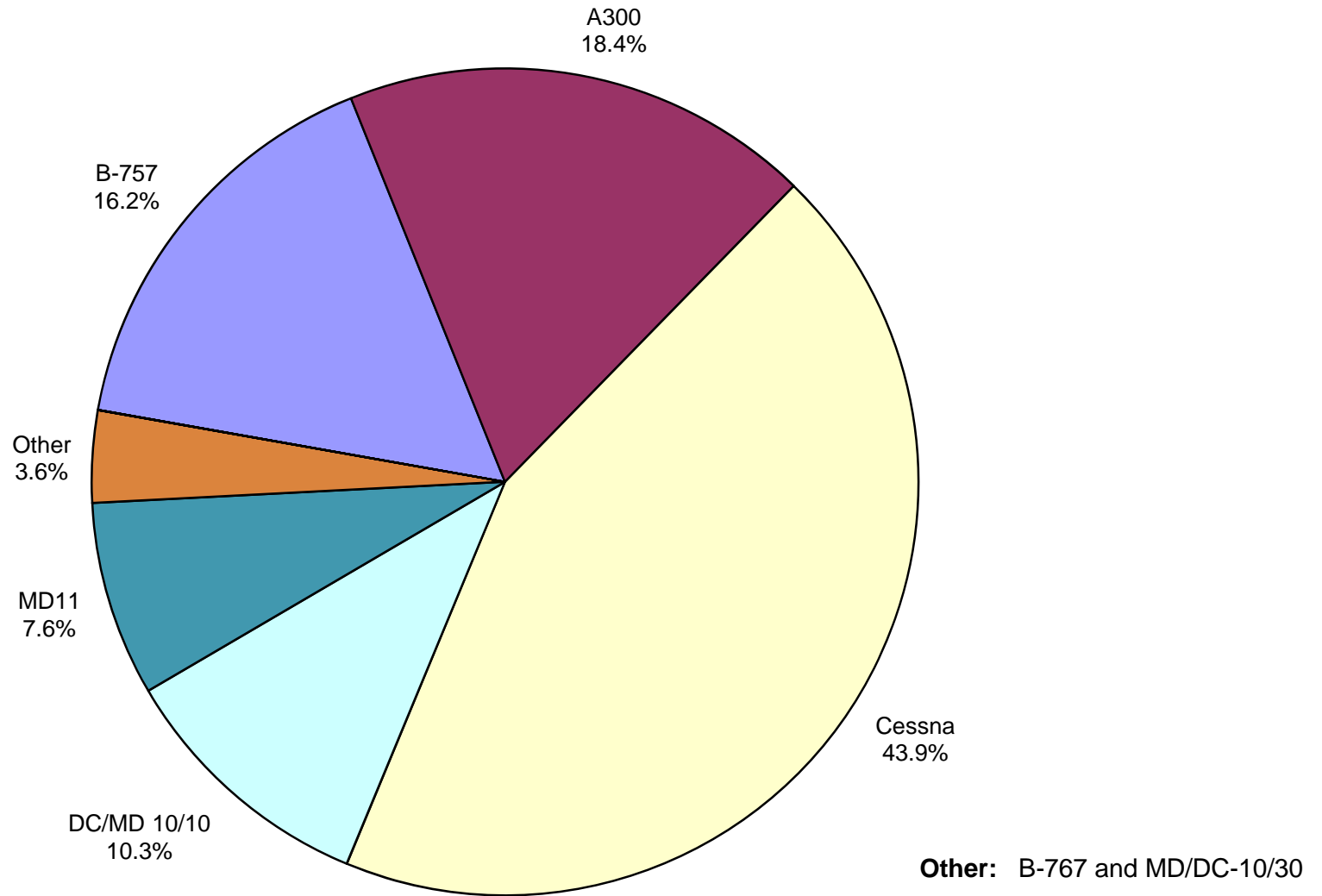


**AUS Scheduled Passenger Aircraft Fleet Mix
October 2017**



Other: B-747, B-757, B-767, B-787-900, MD-82, MD-88 and MD-90

AUS Scheduled Cargo Aircraft Fleet Mix October 2017



Austin-Bergstrom International Airport

PAX Detail Report - October, 2017

Company	10/2017	10/2016	Period		YTD 2017	YTD 2016	YTD		2017 Share	2016 Share	Share Diff
			Difference	Change			Difference	Change			
AeroMexico Airlines	3,092	0	3,092	0.0	30,513	0	30,513	0.0	0.3	0.0	0.3
Air Canada	3,901	4,250	-349	-8.2	34,846	35,197	-351	-1.0	0.3	0.3	0.0
Alaska Airlines	30,640	18,550	12,090	65.2	227,532	186,869	40,663	21.8	2.0	1.8	0.2
Allegiant Air	26,045	15,736	10,309	65.5	220,122	142,769	77,353	54.2	1.9	1.4	0.5
American Airlines	239,191	226,548	12,643	5.6	2,177,817	2,112,945	64,872	3.1	19.0	20.5	-1.5
Ameristarjet Charter	0	0	0	0.0	0	14	-14	-100.0	0.0	0.0	0.0
Atlas Air	0	0	0	0.0	0	453	-453	-100.0	0.0	0.0	0.0
British Airways	11,746	11,513	233	2.0	108,285	109,817	-1,532	-1.4	0.9	1.1	-0.1
Concesionaria Vuela Compañía de Aviación, S.A.P.I. de C.V.	1,185	1,949	-764	-39.2	12,844	5,625	7,219	128.3	0.1	0.1	0.1
Condor Airlines	699	0	699	0.0	19,745	8,142	11,603	142.5	0.2	0.1	0.1
Delta Air Lines	173,563	134,925	38,638	28.6	1,471,108	1,275,704	195,404	15.3	12.8	12.3	0.5
Elite Airways, LLC	29	0	29	0.0	29	0	29	0.0	0.0	0.0	0.0
Frontier Airlines	43,521	38,427	5,094	13.3	391,684	268,817	122,867	45.7	3.4	2.6	0.8
Iberia Airlines	0	0	0	0.0	245	246	-1	-0.4	0.0	0.0	0.0
JetBlue Airways	50,348	44,900	5,448	12.1	504,074	474,722	29,352	6.2	4.4	4.6	-0.2
Miami Air International	333	0	333	0.0	333	0	333	0.0	0.0	0.0	0.0
Southwest Airlines	462,344	408,555	53,789	13.2	4,260,756	3,941,651	319,105	8.1	37.2	38.1	-1.0
Sun Country Airlines	1,259	883	376	42.6	5,578	4,554	1,024	22.5	0.0	0.0	0.0
Swift Air	0	0	0	0.0	1,272	0	1,272	0.0	0.0	0.0	0.0
Texas Sky	0	228	-228	-100.0	604	1,462	-858	-58.7	0.0	0.0	0.0
Turkish Airlines	0	0	0	0.0	0	376	-376	-100.0	0.0	0.0	0.0
United Airlines	207,917	179,883	28,034	15.6	1,868,243	1,617,871	250,372	15.5	16.3	15.7	0.6
VIA Airlines	357	0	357	0.0	2,507	0	2,507	0.0	0.0	0.0	0.0
Virgin America	12,983	14,643	-1,660	-11.3	130,728	143,520	-12,792	-8.9	1.1	1.4	-0.2
Xtra Airways/Casino Express	0	294	-294	-100.0	136	1,461	-1,325	-90.7	0.0	0.0	0.0
Report Totals	1,269,153	1,101,284	167,869	15.2%	11,469,001	10,332,215	1,136,786	11.0%			

Statistics Included in Report:

Domestic Passengers:	Enplaned Revenue, Deplaned Revenue, Enplaned Non-Revenue, Deplaned Non-Revenue
International Passengers:	Enplaned Revenue, Deplaned Revenue, Enplaned Non-Revenue, Deplaned Non-Revenue
International Pre-Cleared Passengers:	Enplaned Revenue, Deplaned Revenue, Enplaned Non-Revenue, Deplaned Non-Revenue
South Terminal Domestic Passengers:	Enplaned Revenue, Deplaned Revenue, Enplaned Non-Revenue, Deplaned Non-Revenue

Austin-Bergstrom International Airport

Summary Landing Report

Landing Type: Total

Month	2017		2016		2015		% Change 2017 - 2016		% Change 2016 - 2015	
	Count	Weight	Count	Weight	Count	Weight	Count	Weight	Count	Weight
January	4,768	612,688,871	4,622	560,718,408	4,480	530,688,382	3.16%	9.27%	3.17%	5.66%
February	4,357	552,711,639	4,387	527,452,920	3,992	477,489,019	-0.68%	4.79%	9.89%	10.46%
March	5,307	685,661,659	5,151	639,655,137	4,872	584,604,521	3.03%	7.19%	5.73%	9.42%
April	5,179	689,402,051	4,892	614,643,711	4,875	593,462,176	5.87%	12.16%	0.35%	3.57%
May	5,529	736,484,083	5,096	630,853,941	5,161	625,876,151	8.50%	16.74%	-1.26%	0.80%
June	5,603	752,628,599	5,179	651,537,449	5,239	644,690,908	8.19%	15.52%	-1.15%	1.06%
July	5,698	763,088,836	5,233	663,015,597	5,503	676,131,170	8.89%	15.09%	-4.91%	-1.94%
August	5,490	741,110,019	5,181	660,099,361	5,277	652,770,571	5.96%	12.27%	-1.82%	1.12%
September	5,046	679,381,339	4,738	623,397,035	4,833	598,547,454	6.50%	8.98%	-1.97%	4.15%
October	5,448	743,973,610	4,923	649,182,343	4,891	611,952,269	10.66%	14.60%	0.65%	6.08%
November			4,775	624,303,554	4,815	605,234,834			-0.83%	3.15%
December			4,893	629,611,090	5,100	633,215,540			-4.06%	-0.57%
Totals for Selected Period	52,425	6,957,130,706	49,402	6,220,555,902	49,123	5,996,212,621	6.12%	11.84%	0.57%	3.74%
Yearly Totals	52,425	6,957,130,706	59,070	7,474,470,546	59,038	7,234,662,995			0.05%	3.31%