

**Austin-Bergstrom International Airport
Aviation Activity Report
Calendar Year 2017 vs 2016**

Combined Terminals

| | 11/2017 | 11/2016 | Percent Change | 01/2017 - 11/2017 | 01/2016 - 11/2016 | Percent Change |
|--|------------------|------------------|----------------|-------------------|-------------------|----------------|
| ABIA | | | | | | |
| Total Passenger Activity | | | | | | |
| Domestic Enplaned Revenue | 577,478 | 515,809 | 11.96 | 5,966,517 | 5,459,052 | 9.30 |
| Domestic Deplaned Revenue | 576,322 | 512,054 | 12.55 | 5,948,109 | 5,453,931 | 9.06 |
| International Enplaned Revenue | 11,009 | 9,733 | 13.11 | 130,997 | 100,838 | 29.91 |
| International Deplaned Revenue | 10,710 | 9,553 | 12.11 | 131,835 | 107,269 | 22.90 |
| Domestic Enplaned Non-Revenue | 12,821 | 9,921 | 29.23 | 148,307 | 120,634 | 22.94 |
| Domestic Deplaned Non-Revenue | 12,387 | 9,668 | 28.12 | 141,570 | 120,445 | 17.54 |
| International Enplaned Non-Revenue | 107 | 88 | 21.59 | 1,082 | 873 | 23.94 |
| International Deplaned Non-Revenue | 70 | 62 | 12.90 | 911 | 864 | 5.44 |
| Intl Enplaned Pre-Cleared Revenue | 1,675 | 1,747 | -4.12 | 18,429 | 18,116 | 1.73 |
| Intl Deplaned Pre-Cleared Revenue | 1,886 | 1,910 | -1.26 | 19,514 | 20,200 | -3.40 |
| Intl Enplaned Pre-Cleared Non-Revenue | 29 | 20 | 45.00 | 259 | 278 | -6.83 |
| Intl Deplaned Pre-Cleared Non-Revenue | 28 | 2 | 1,300.00 | 262 | 282 | -7.09 |
| South Terminal Domestic Enplaned Revenue | 12,761 | 0 | 0.00 | 95,603 | 0 | 0.00 |
| South Terminal Domestic Deplaned Revenue | 12,503 | 0 | 0.00 | 95,324 | 0 | 0.00 |
| South Terminal Domestic Enplaned Non-Revenue | 2 | 0 | 0.00 | 48 | 0 | 0.00 |
| South Terminal Domestic Deplaned Non-Revenue | 3 | 0 | 0.00 | 25 | 0 | 0.00 |
| ABIA Passenger Totals | 1,229,791 | 1,070,567 | 14.87 | 12,698,792 | 11,402,782 | 11.37 |
| <i>ABIA Enplaned Passenger Totals</i> | <i>615,882</i> | <i>537,318</i> | <i>14.62</i> | <i>6,361,242</i> | <i>5,699,791</i> | <i>11.60</i> |
| <i>ABIA Deplaned Passenger Totals</i> | <i>613,909</i> | <i>533,249</i> | <i>15.13</i> | <i>6,337,550</i> | <i>5,702,991</i> | <i>11.13</i> |
| <i>ABIA Domestic Passenger Totals</i> | <i>1,204,277</i> | <i>1,047,452</i> | <i>14.97</i> | <i>12,395,503</i> | <i>11,154,062</i> | <i>11.13</i> |
| <i>ABIA International Passenger Totals</i> | <i>25,514</i> | <i>23,115</i> | <i>10.38</i> | <i>303,289</i> | <i>248,720</i> | <i>21.94</i> |

CURRENT PASSENGER RECORD = 1,310,174 RECORD SET = JULY 2017

Total Aircraft Operations

| | | | | | | |
|-------------------------|---------------|---------------|-------------|----------------|----------------|-------------|
| Air Carrier | 10,335 | 9,325 | 10.83 | 112,833 | 103,887 | 8.61 |
| Commuter & Air Taxi | 1,453 | 1,402 | 3.64 | 14,023 | 15,064 | -6.91 |
| Military | 640 | 741 | -13.63 | 9,062 | 9,751 | -7.07 |
| General Aviation | | | | | | |
| Itinerant | 3,968 | 4,546 | -12.71 | 45,525 | 45,784 | -0.57 |
| Local | 94 | 322 | -70.81 | 2,233 | 2,566 | -12.98 |
| Total G.A. | 4,062 | 4,868 | -16.56 | 47,758 | 48,350 | -1.22 |
| Total Operations | 16,490 | 16,336 | 0.94 | 183,676 | 177,052 | 3.74 |

**Austin-Bergstrom International Airport
Aviation Activity Report
Calendar Year 2017 vs 2016**

By Terminal

| | 11/2017 | 11/2016 | Percent Change | 01/2017 - 11/2017 | 01/2016 - 11/2016 | Percent Change |
|---|------------------|------------------|----------------|-------------------|-------------------|----------------|
| <u>Barbara Jordan Terminal (BJT)</u> | | | | | | |
| Passenger Activity | | | | | | |
| Domestic Enplaned Revenue | 577,478 | 515,809 | 11.96 | 5,966,517 | 5,459,052 | 9.30 |
| Domestic Deplaned Revenue | 576,322 | 512,054 | 12.55 | 5,948,109 | 5,453,931 | 9.06 |
| International Enplaned Revenue | 11,009 | 9,733 | 13.11 | 130,997 | 100,838 | 29.91 |
| International Deplaned Revenue | 10,710 | 9,553 | 12.11 | 131,835 | 107,269 | 22.90 |
| Domestic Enplaned Non-Revenue | 12,821 | 9,921 | 29.23 | 148,307 | 120,634 | 22.94 |
| Domestic Deplaned Non-Revenue | 12,387 | 9,668 | 28.12 | 141,570 | 120,445 | 17.54 |
| International Enplaned Non-Revenue | 107 | 88 | 21.59 | 1,082 | 873 | 23.94 |
| International Deplaned Non-Revenue | 70 | 62 | 12.90 | 911 | 864 | 5.44 |
| Intl Enplaned Pre-Cleared Revenue | 1,675 | 1,747 | -4.12 | 18,429 | 18,116 | 1.73 |
| Intl Deplaned Pre-Cleared Revenue | 1,886 | 1,910 | -1.26 | 19,514 | 20,200 | -3.40 |
| Intl Enplaned Pre-Cleared Non-Revenue | 29 | 20 | 45.00 | 259 | 278 | -6.83 |
| Intl Deplaned Pre-Cleared Non-Revenue | 28 | 2 | 1,300.00 | 262 | 282 | -7.09 |
| Barbara Jordan Terminal Passenger Totals | 1,204,522 | 1,070,567 | 12.51 | 12,507,792 | 11,402,782 | 9.69 |
| <i>BJT Enplaned Passenger Totals</i> | <i>603,119</i> | <i>537,318</i> | <i>12.25</i> | <i>6,265,591</i> | <i>5,699,791</i> | <i>9.93</i> |
| <i>BJT Deplaned Passenger Totals</i> | <i>601,403</i> | <i>533,249</i> | <i>12.78</i> | <i>6,242,201</i> | <i>5,702,991</i> | <i>9.45</i> |
| <i>BJT Domestic Passenger Totals</i> | <i>1,179,008</i> | <i>1,047,452</i> | <i>12.56</i> | <i>12,204,503</i> | <i>11,154,062</i> | <i>9.42</i> |
| <i>BJT International Passenger Totals</i> | <i>25,514</i> | <i>23,115</i> | <i>10.38</i> | <i>303,289</i> | <i>248,720</i> | <i>21.94</i> |
| <u>South Terminal (ST)</u> | | | | | | |
| Passenger Activity | | | | | | |
| South Terminal Domestic Enplaned Revenue | 12,761 | 0 | 0.00 | 95,603 | 0 | 0.00 |
| South Terminal Domestic Deplaned Revenue | 12,503 | 0 | 0.00 | 95,324 | 0 | 0.00 |
| South Terminal Domestic Enplaned Non-Revenue | 2 | 0 | 0.00 | 48 | 0 | 0.00 |
| South Terminal Domestic Deplaned Non-Revenue | 3 | 0 | 0.00 | 25 | 0 | 0.00 |
| South Terminal Passenger Totals | 25,269 | 0 | 0.00 | 191,000 | 0 | 0.00 |
| <i>ST Enplaned Passenger Totals</i> | <i>12,763</i> | <i>0</i> | <i>0</i> | <i>95,651</i> | <i>0</i> | <i>0</i> |
| <i>ST Deplaned Passenger Totals</i> | <i>12,506</i> | <i>0</i> | <i>0</i> | <i>95,349</i> | <i>0</i> | <i>0</i> |

**Austin-Bergstrom International Airport
Aviation Activity Report
Calendar Year 2017 vs 2016**

| | 11/2017 | 11/2016 | Percent Change | 01/2017 - 11/2017 | 01/2016 - 11/2016 | Percent Change |
|--|-------------------|-------------------|-------------------|----------------------|----------------------|-------------------|
| <u>Total Cargo Activity</u> | | | | | | |
| Mail | | | | | | |
| Domestic Enplaned Mail | 189,279 | 164,473 | 15.08 | 2,107,313 | 1,489,270 | 41.50 |
| Domestic Deplaned Mail | 455,429 | 344,481 | 32.21 | 4,199,587 | 2,728,555 | 53.91 |
| International Enplaned Mail | 0 | 0 | 0.00 | 0 | 0 | 0.00 |
| International Deplaned Mail | 0 | 0 | 0.00 | 2 | 2 | 0.00 |
| South Terminal-Intl Enplaned Mail | 0 | 0 | 0.00 | 0 | 0 | 0.00 |
| South Terminal-Intl Deplaned Mail | 0 | 0 | 0.00 | 0 | 0 | 0.00 |
| Mail Totals | 644,708 | 508,954 | 26.67 | 6,306,902 | 4,217,827 | 49.53 |
| Cargo | | | | | | |
| Domestic Enplaned Cargo | 4,772,097 | 5,732,847 | -16.76 | 56,366,052 | 57,199,278 | -1.46 |
| Domestic Deplaned Cargo | 7,041,824 | 6,764,319 | 4.10 | 77,532,192 | 72,196,015 | 7.39 |
| International Enplaned Cargo | 584,783 | 417,437 | 40.09 | 8,529,206 | 5,480,184 | 55.64 |
| International Deplaned Cargo | 299,440 | 248,204 | 20.64 | 4,878,465 | 4,183,809 | 16.60 |
| South Terminal-Intl Enplaned Cargo | 0 | 0 | 0.00 | 0 | 0 | 0.00 |
| South Terminal-Intl Deplaned Cargo | 0 | 0 | 0.00 | 0 | 0 | 0.00 |
| Cargo Totals | 12,698,144 | 13,162,807 | -3.53 | 147,305,915 | 139,059,286 | 5.93 |
| Belly Freight | | | | | | |
| Domestic Enplaned Belly Freight | 298,757 | 257,885 | 15.85 | 3,127,280 | 2,655,380 | 17.77 |
| Domestic Deplaned Belly Freight | 478,798 | 425,791 | 12.45 | 5,586,797 | 5,042,560 | 10.79 |
| International Enplaned Belly Freight | 535,071 | 156,015 | 242.96 | 3,062,986 | 1,541,984 | 98.64 |
| International Deplaned Belly Freight | 845,513 | 796,655 | 6.13 | 8,058,089 | 5,864,288 | 37.41 |
| South Terminal-Intl Enplaned Belly Freight | 0 | 0 | 0.00 | 0 | 0 | 0.00 |
| South Terminal-Intl Deplaned Belly Freight | 0 | 0 | 0.00 | 0 | 0 | 0.00 |
| Belly Freight Totals | 2,158,139 | 1,636,346 | 31.89 | 19,835,152 | 15,104,212 | 31.32 |
| Cargo Totals (Mail, Cargo, Belly Freight) | 15,500,991 | 15,308,107 | 1.26 | 173,447,969 | 158,381,325 | 9.51 |
| <i>Enplaned Cargo Totals</i> | <i>6,379,987</i> | <i>6,728,657</i> | <i>-5.18</i> | <i>73,192,837</i> | <i>68,366,096</i> | <i>7.06</i> |
| <i>Deplaned Cargo Totals</i> | <i>9,121,004</i> | <i>8,579,450</i> | <i>6.31</i> | <i>100,255,132</i> | <i>90,015,229</i> | <i>11.38</i> |
| <i>Domestic Cargo Totals</i> | <i>13,236,184</i> | <i>13,689,796</i> | <i>-3.31</i> | <i>148,919,221</i> | <i>141,311,058</i> | <i>5.38</i> |
| <i>International Cargo Totals</i> | <i>2,264,807</i> | <i>1,618,311</i> | <i>39.95</i> | <i>24,528,748</i> | <i>17,070,267</i> | <i>43.69</i> |

CURRENT CARGO RECORD = 40,215,518

RECORD SET = MARCH 2001

AUS – Airline Codes

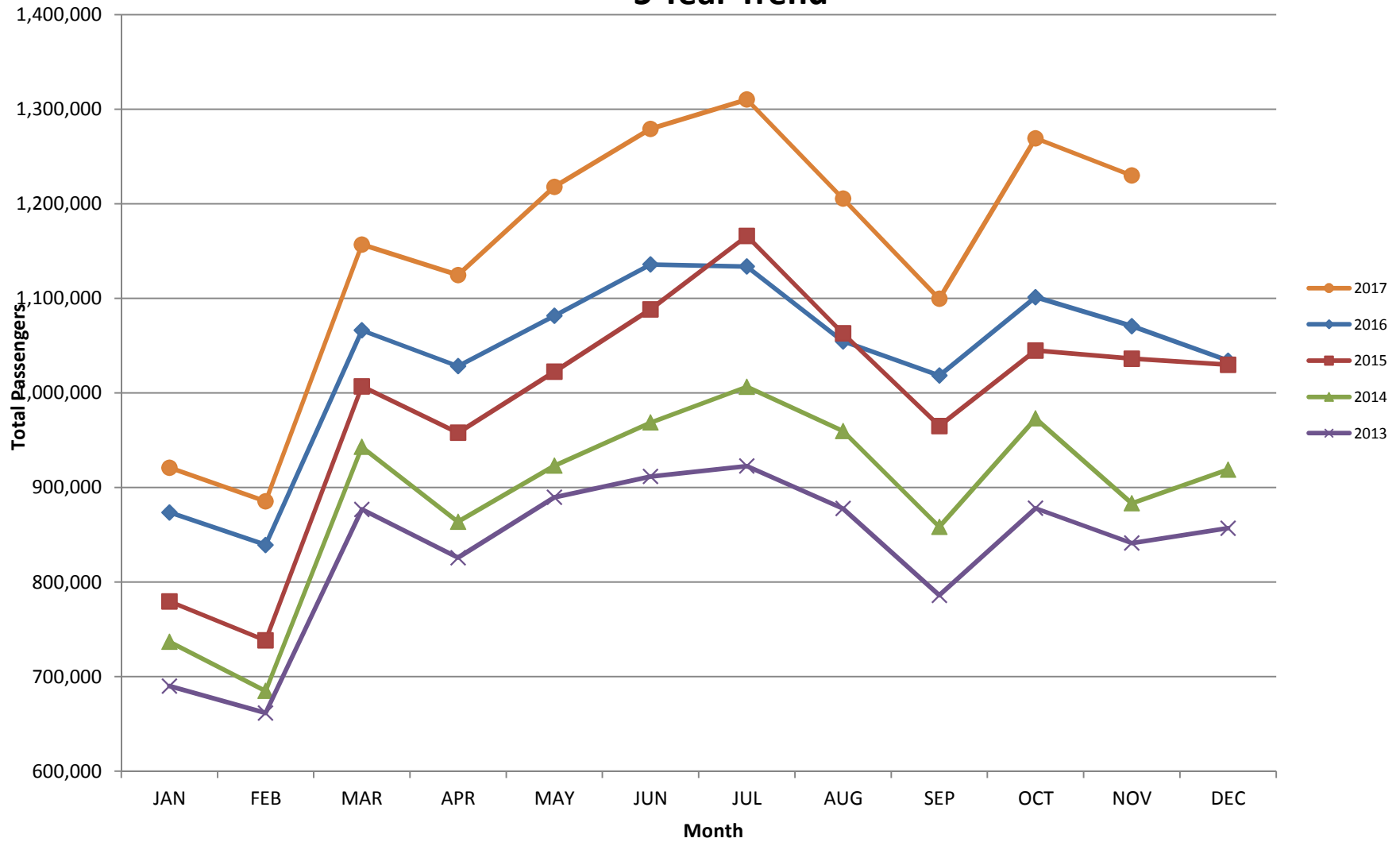
November 2017

| <u>Code</u> | <u>Carrier</u> |
|-------------|---|
| AM | AeroMexico Airlines |
| AC | Air Canada |
| AS | Alaska Airlines, Inc. |
| G4 | Allegiant Air, LLC |
| AA | American Airlines, Inc. |
| BA | British Airways Plc |
| Y4 | Concesionaria Vuela Compañía de Aviación, S.A.P.I. de C.V dba Volaris |
| DL | Delta Airlines |
| 7Q | Elite Airways, LLC |
| F9 | Frontier Airlines |
| B6 | JetBlue Airways Corp. |
| LL | Miami Air International |
| WN | Southwest Airlines |
| SY | Sun Country Airlines/ MN Airlines, LLC |
| WQ | Swift Air |
| UA | United Airlines, Inc. |
| VC | VIA Airlines |
| VX | Virgin America Inc. |

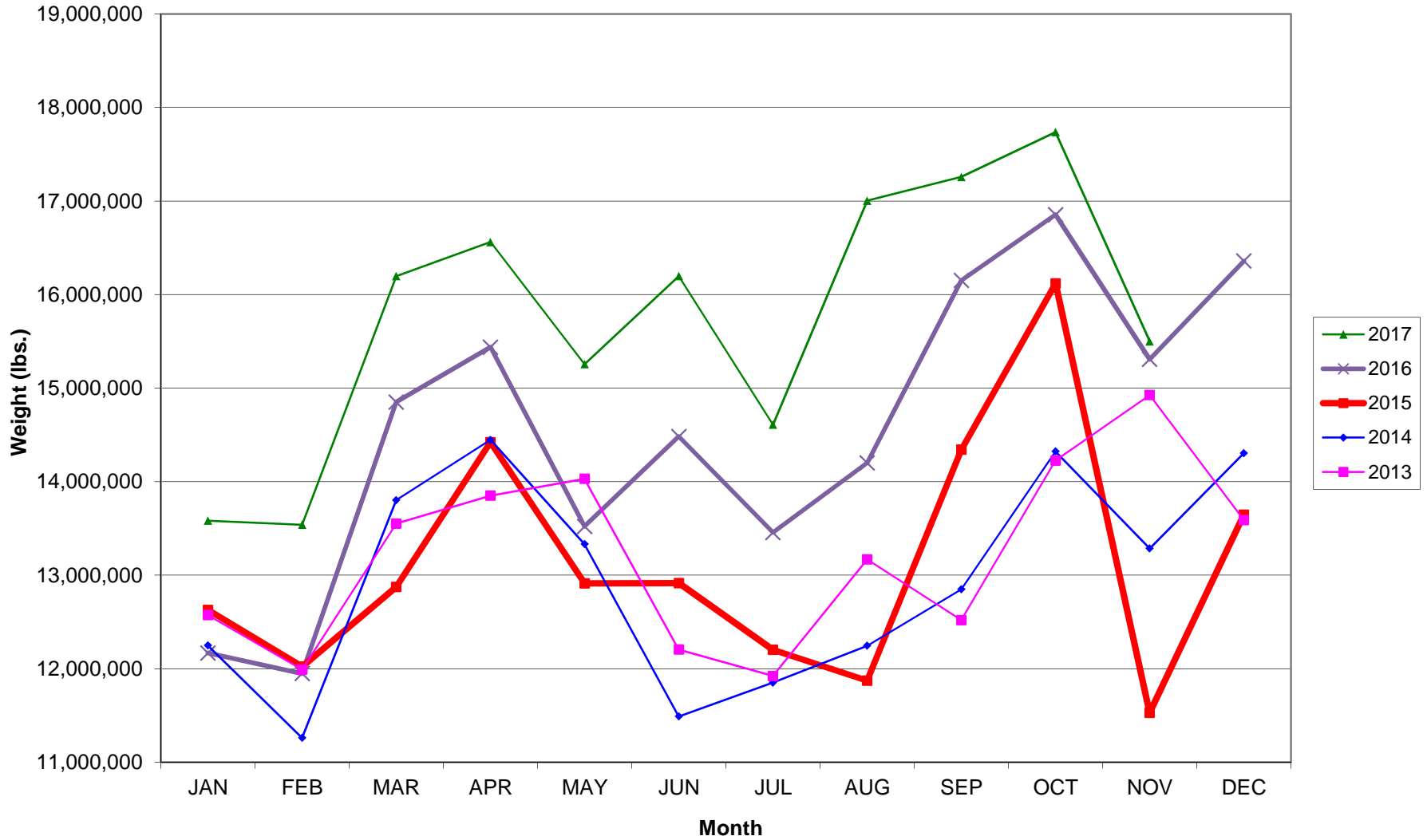
.

AUSTIN PASSENGER TRAFFIC

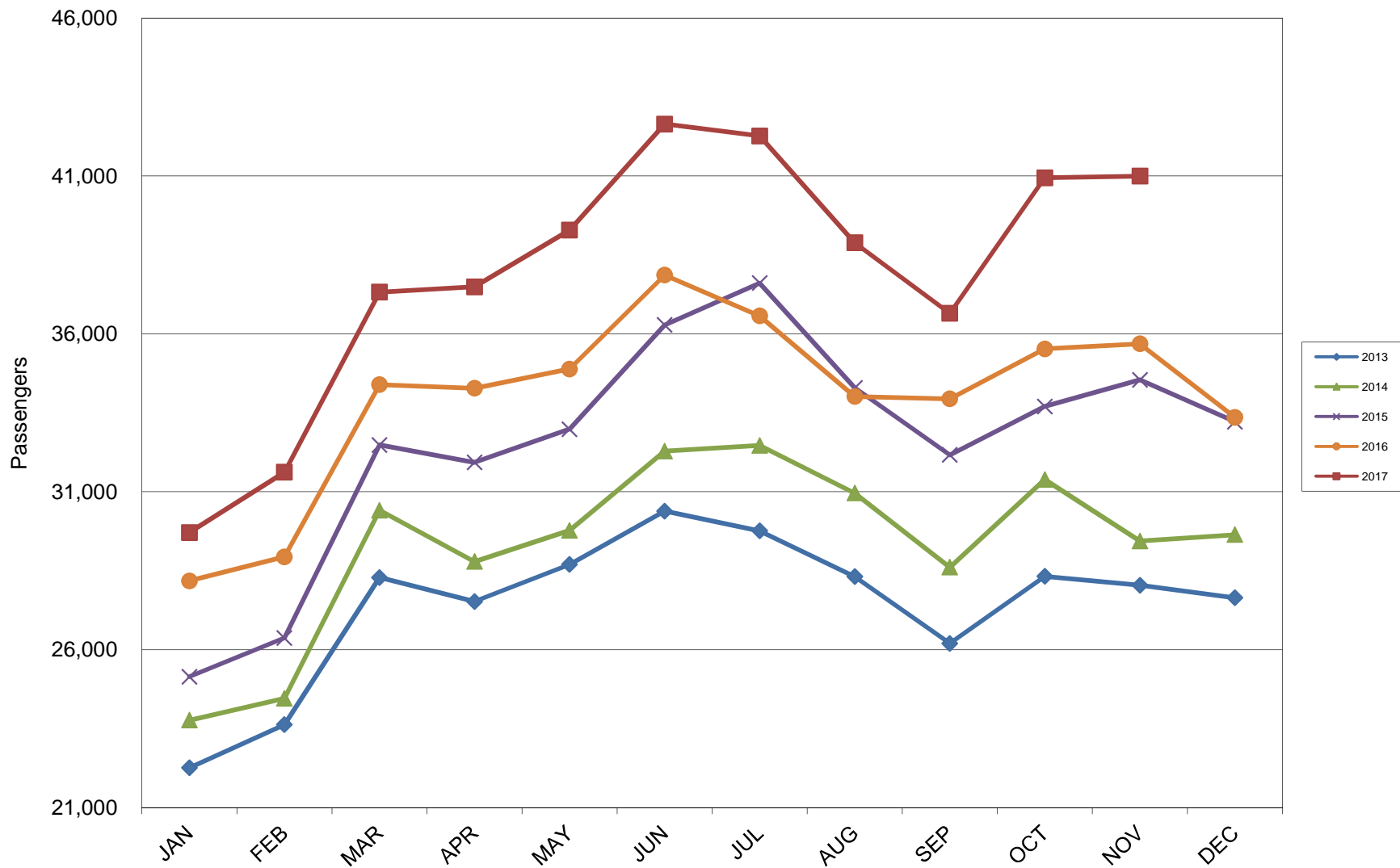
5 Year Trend



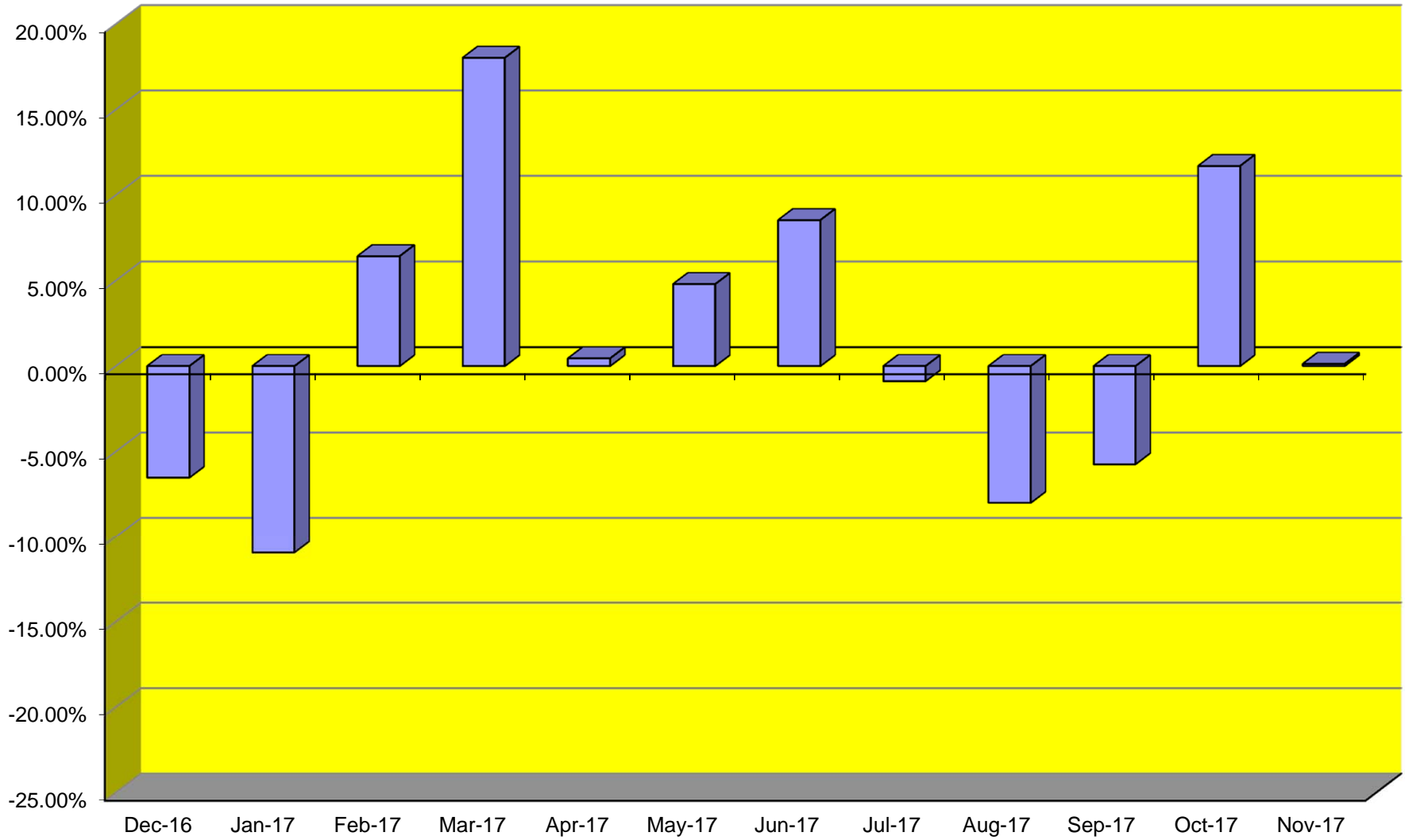
TOTAL CARGO POUNDAGE - AUSTIN, TEXAS



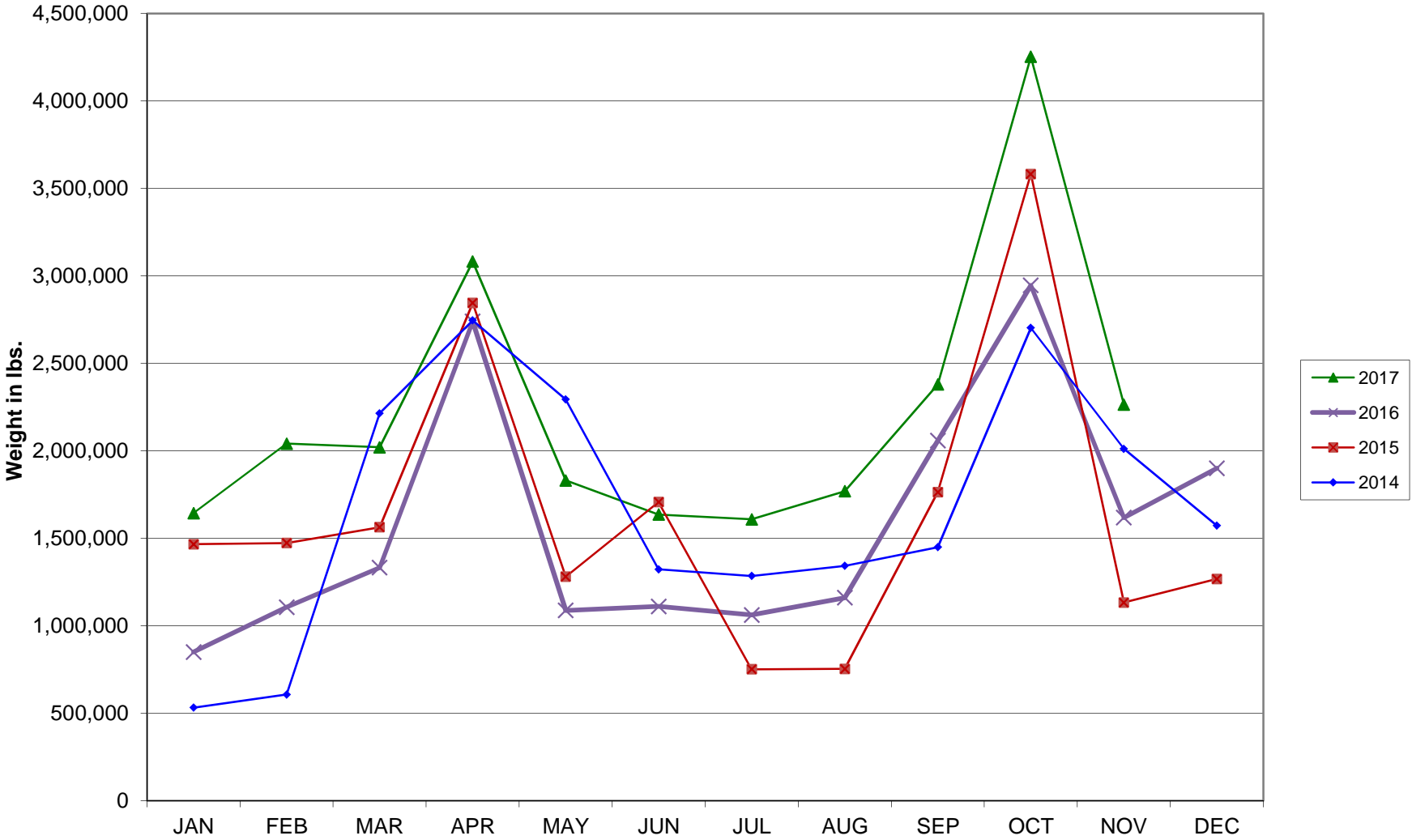
Average Daily Passengers



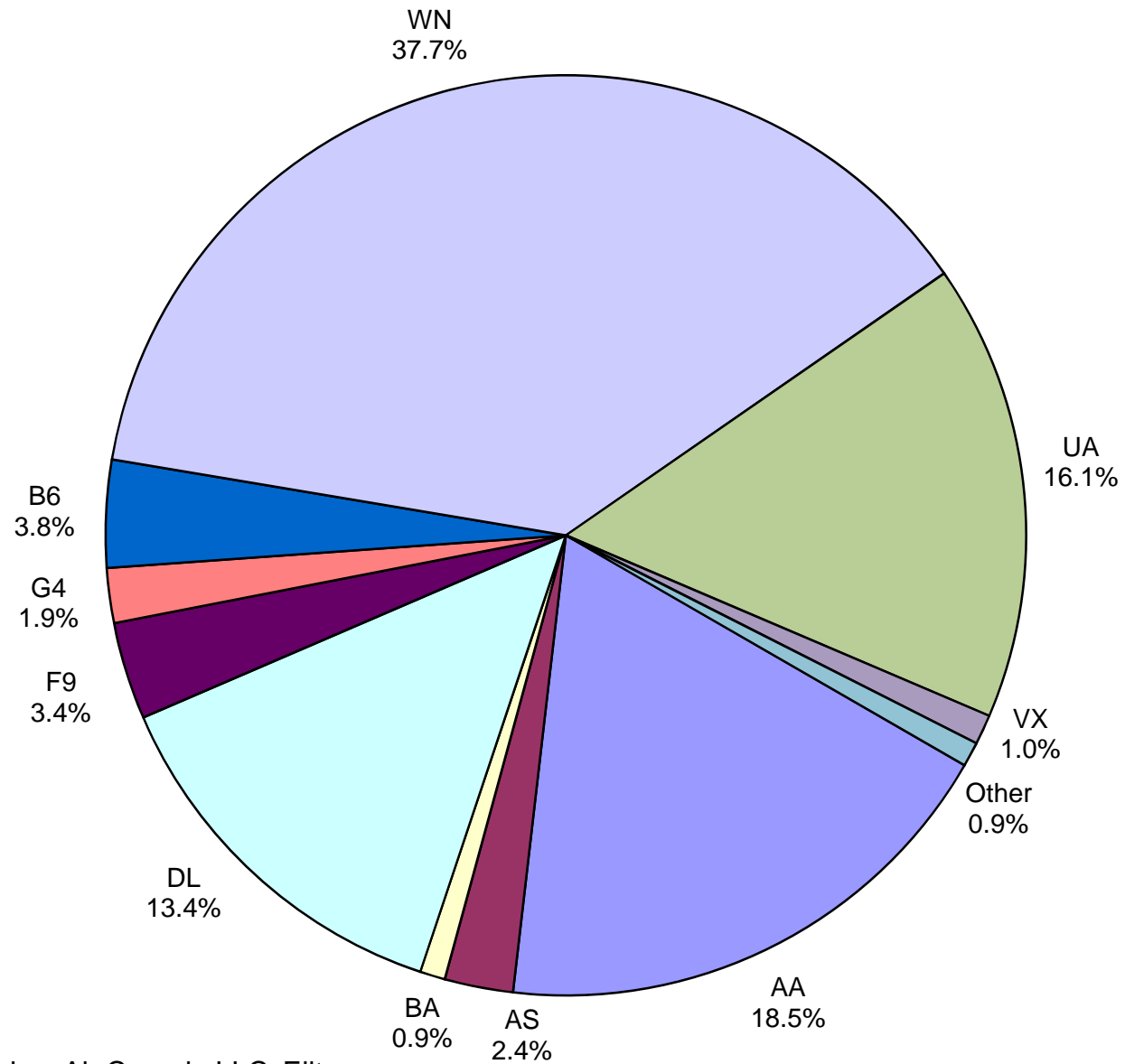
Monthly % Change in Average Daily Passengers



HISTORY OF INTERNATIONAL AIR CARGO



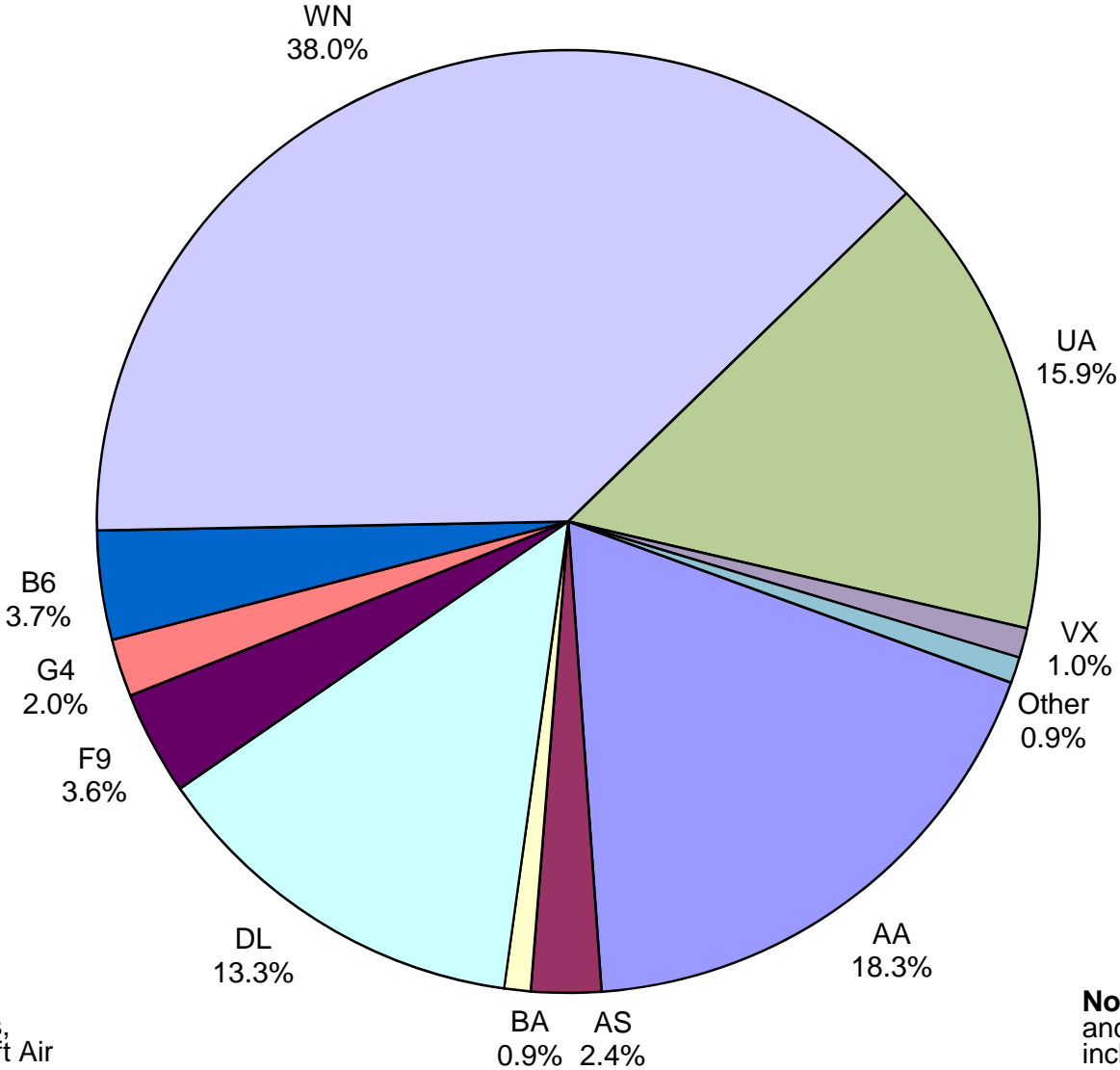
**Total Passengers
November 2017**



Other: Aeromexico, Air Canada LLC, Elite Airways, LLC, Miami Air Int'l, Sun Country, Swift Air, VIA Airlines and Concesionaria Vuela dba Volaris

Note: American, Delta and United Airlines percentages include Affiliates.

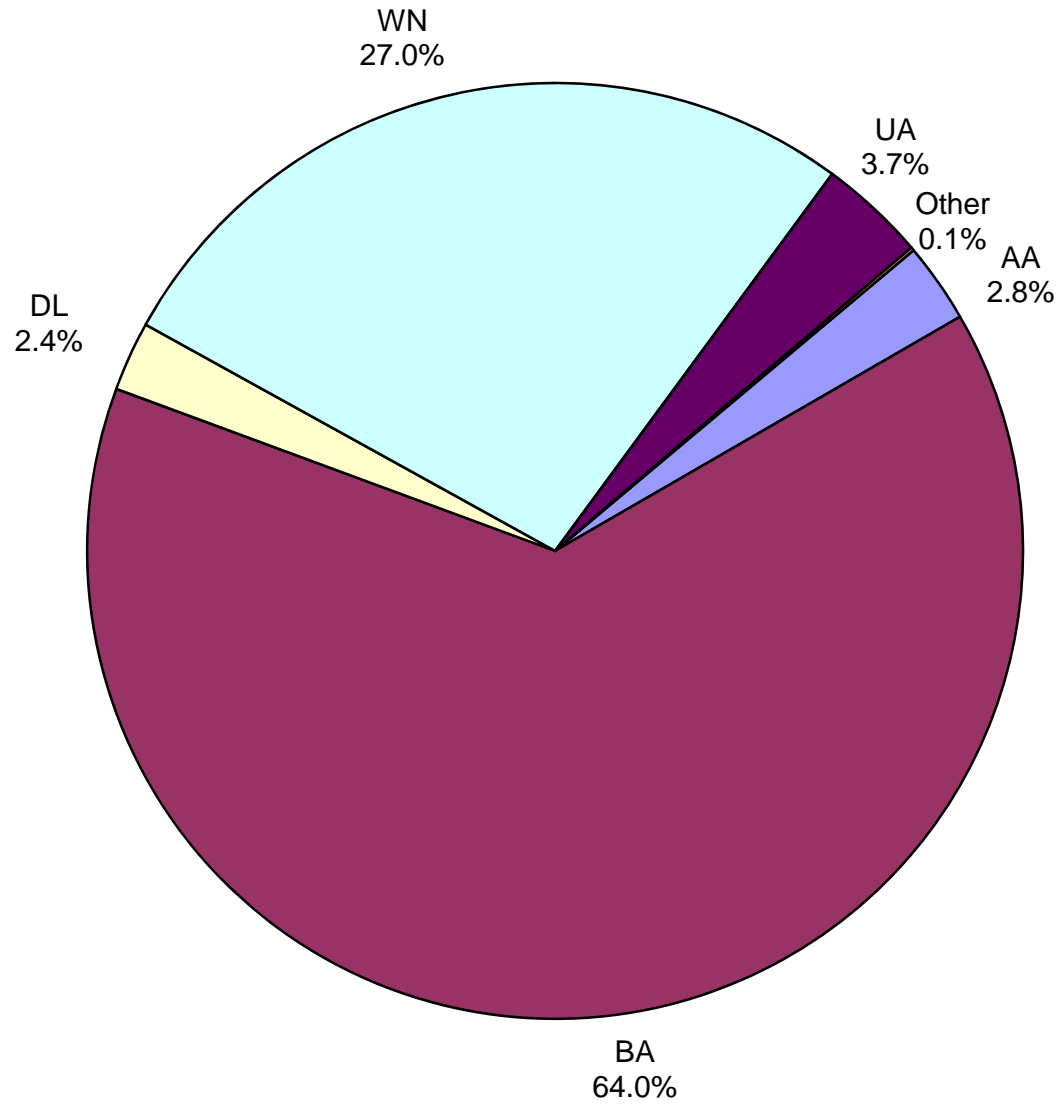
**All Passenger Carriers
Enplaned Revenue Passengers
November 2017**



Other: Aeromexico, Air Canada, Concesionaria Vuela dba Volaris, Miami Air Int'l, Sun Country, Swift Air and VIA Airlines

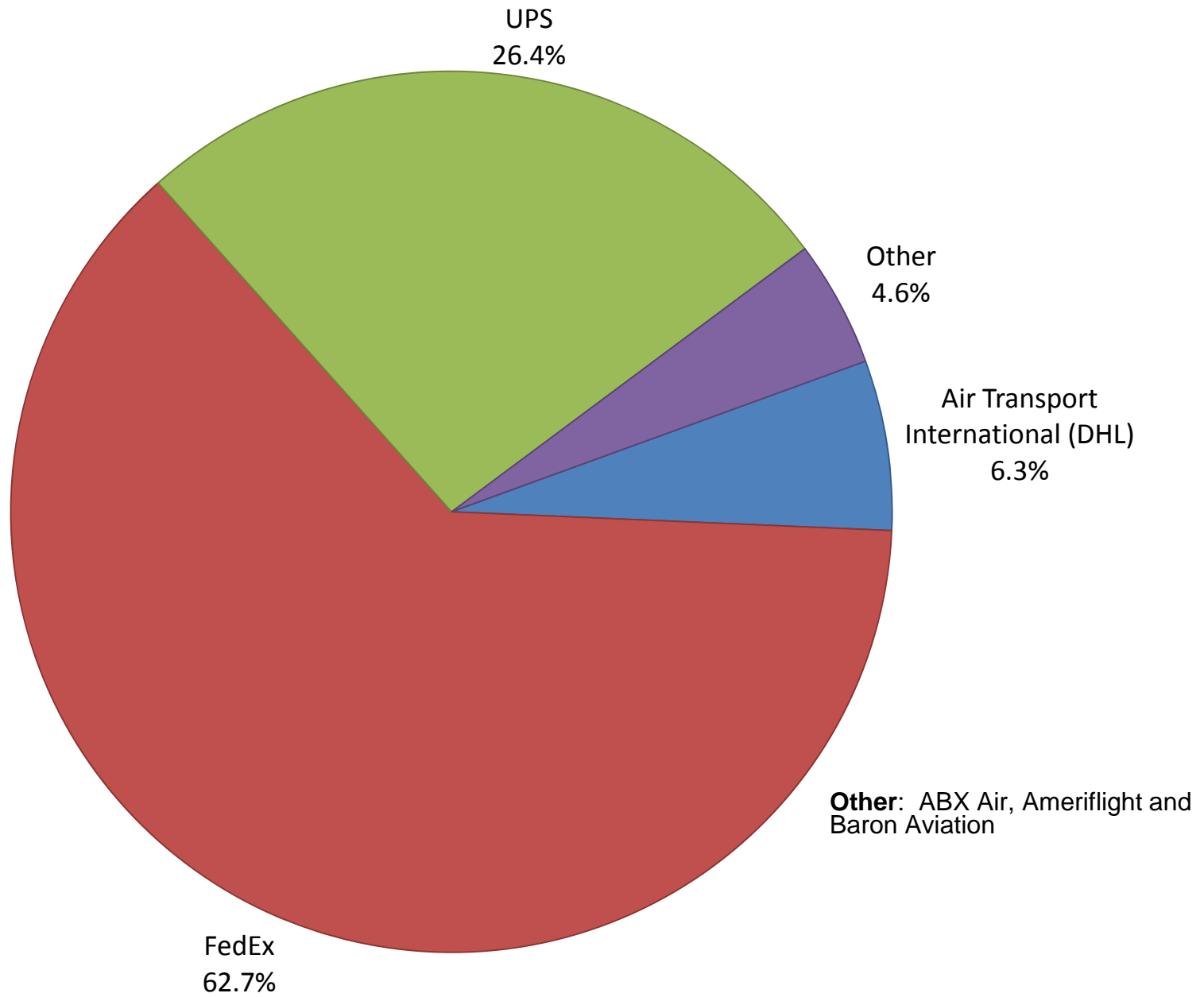
Note: American/US Airways, Delta and United Airlines percentages include Affiliates.

**AUS Belly Freight Market Shares
November 2017**

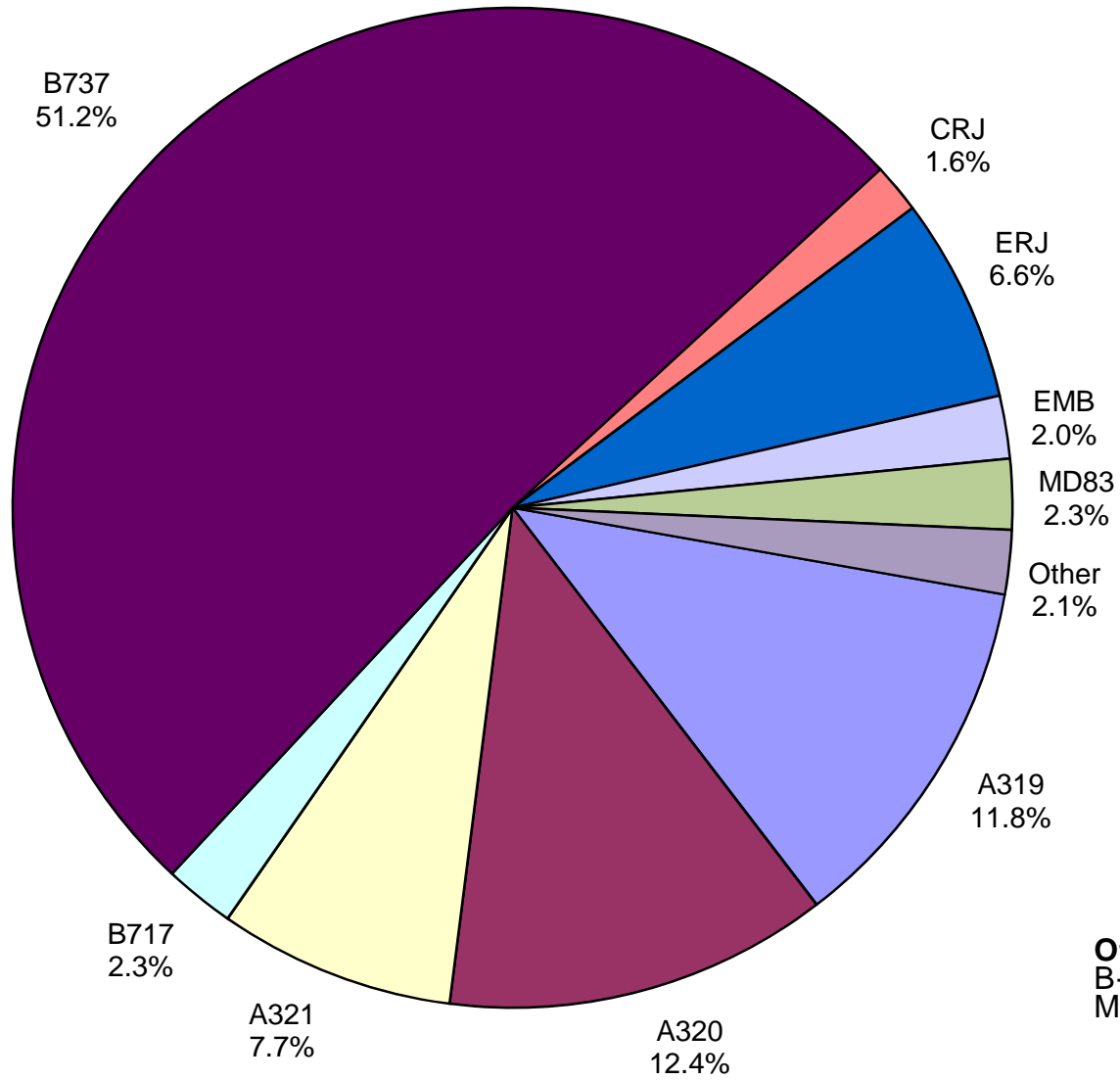


Other = Alaska Airlines

Air Cargo Market Share November 2017

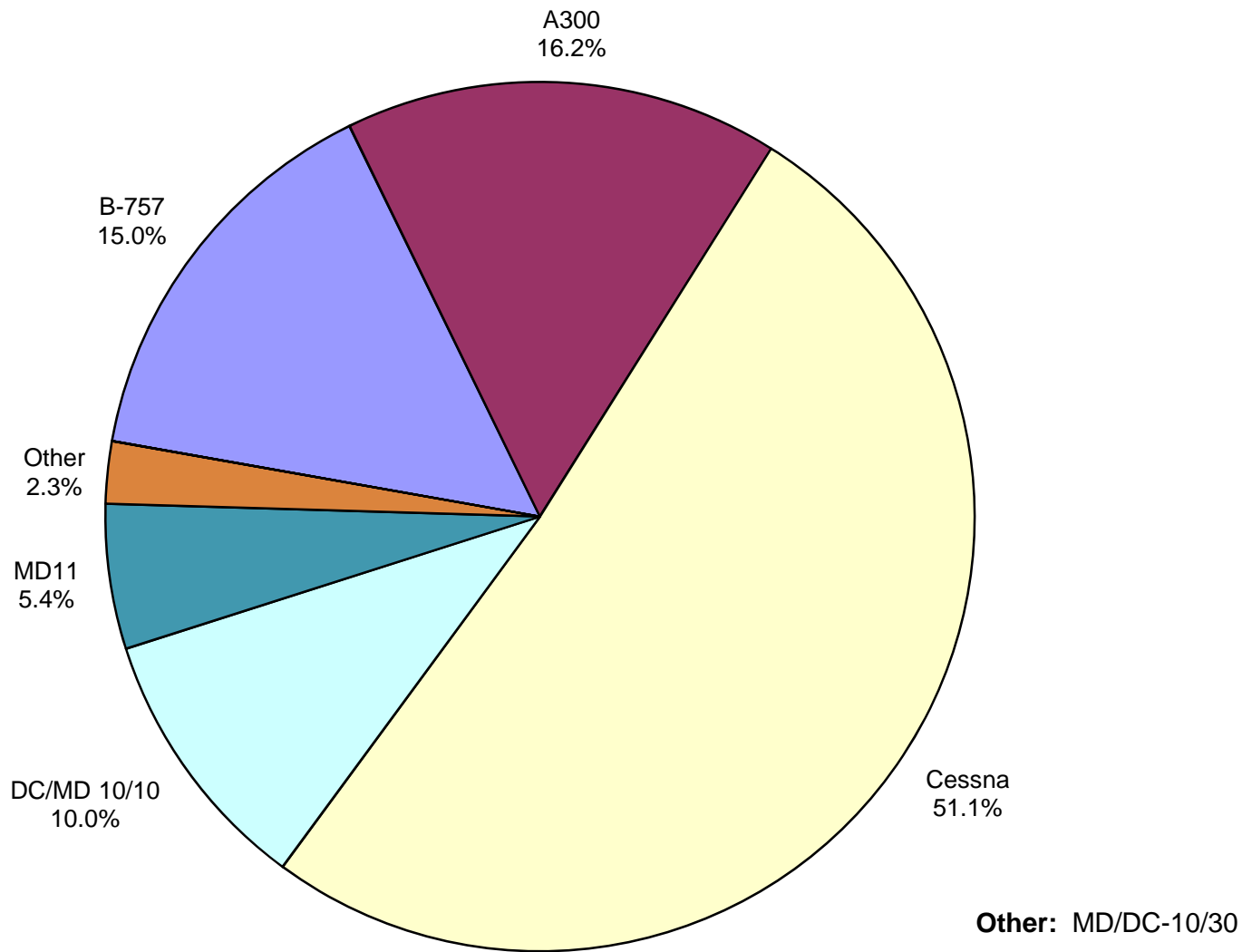


**AUS Scheduled Passenger Aircraft Fleet Mix
November 2017**



Other: B-757, B-777,
B-787-900, MD-82, MD-88 and
MD-90

AUS Scheduled Cargo Aircraft Fleet Mix November 2017



Austin-Bergstrom International Airport

PAX Detail Report - November, 2017

| Company | 11/2017 | 11/2016 | Period | | YTD 2017 | YTD 2016 | YTD | | 2017 Share | 2016 Share | Share Diff |
|---|------------------|------------------|----------------|--------------|-------------------|-------------------|------------------|--------------|---------------|---------------|---------------|
| | | | Difference | Change | | | Difference | Change | | | |
| Aerovias de Mexico S.A. de C.V. | 3,740 | 1,346 | 2,394 | 177.9 | 34,253 | 1,346 | 32,907 | 2,444.8 | 0.3 | 0.0 | 0.3 |
| Air Canada | 3,618 | 3,679 | -61 | -1.7 | 38,464 | 38,876 | -412 | -1.1 | 0.3 | 0.3 | 0.0 |
| Alaska Airlines | 29,570 | 19,811 | 9,759 | 49.3 | 257,102 | 206,680 | 50,422 | 24.4 | 2.0 | 1.8 | 0.2 |
| Allegiant Air | 23,754 | 14,253 | 9,501 | 66.7 | 243,876 | 157,022 | 86,854 | 55.3 | 1.9 | 1.4 | 0.5 |
| American Airlines | 227,527 | 215,097 | 12,430 | 5.8 | 2,405,344 | 2,328,042 | 77,302 | 3.3 | 18.9 | 20.4 | -1.5 |
| Ameristarjet Charter | 0 | 0 | 0 | 0.0 | 0 | 14 | -14 | -100.0 | 0.0 | 0.0 | 0.0 |
| Atlas Air | 0 | 0 | 0 | 0.0 | 0 | 453 | -453 | -100.0 | 0.0 | 0.0 | 0.0 |
| British Airways | 10,856 | 10,094 | 762 | 7.5 | 119,141 | 119,911 | -770 | -0.6 | 0.9 | 1.1 | -0.1 |
| Concesionaria Vuela Compañía de Aviación, S.A.P.I. de C.V. | 1,135 | 2,066 | -931 | -45.1 | 13,979 | 7,691 | 6,288 | 81.8 | 0.1 | 0.1 | 0.0 |
| Condor Airlines | 0 | 0 | 0 | 0.0 | 19,745 | 8,142 | 11,603 | 142.5 | 0.2 | 0.1 | 0.1 |
| Delta Air Lines | 164,839 | 131,402 | 33,437 | 25.4 | 1,635,947 | 1,407,106 | 228,841 | 16.3 | 12.9 | 12.3 | 0.5 |
| Eastern Air Lines Group | 0 | 163 | -163 | -100.0 | 0 | 163 | -163 | -100.0 | 0.0 | 0.0 | 0.0 |
| Elite Airways, LLC | 65 | 0 | 65 | 0.0 | 94 | 0 | 94 | 0.0 | 0.0 | 0.0 | 0.0 |
| Frontier Airlines | 42,010 | 23,538 | 18,472 | 78.5 | 433,694 | 292,355 | 141,339 | 48.3 | 3.4 | 2.6 | 0.9 |
| Iberia Airlines | 0 | 0 | 0 | 0.0 | 245 | 246 | -1 | -0.4 | 0.0 | 0.0 | 0.0 |
| JetBlue Airways | 46,290 | 43,599 | 2,691 | 6.2 | 550,364 | 518,321 | 32,043 | 6.2 | 4.3 | 4.5 | -0.2 |
| Miami Air International | 302 | 751 | -449 | -59.8 | 635 | 751 | -116 | -15.4 | 0.0 | 0.0 | 0.0 |
| Southwest Airlines | 463,864 | 420,011 | 43,853 | 10.4 | 4,724,620 | 4,361,662 | 362,958 | 8.3 | 37.2 | 38.3 | -1.0 |
| Sun Country Airlines | 1,144 | 328 | 816 | 248.8 | 6,722 | 4,882 | 1,840 | 37.7 | 0.1 | 0.0 | 0.0 |
| Swift Air | 282 | 0 | 282 | 0.0 | 1,554 | 0 | 1,554 | 0.0 | 0.0 | 0.0 | 0.0 |
| Texas Sky | 0 | 368 | -368 | -100.0 | 604 | 1,830 | -1,226 | -67.0 | 0.0 | 0.0 | 0.0 |
| Turkish Airlines | 0 | 0 | 0 | 0.0 | 0 | 376 | -376 | -100.0 | 0.0 | 0.0 | 0.0 |
| United Airlines | 197,514 | 169,433 | 28,081 | 16.6 | 2,065,757 | 1,787,304 | 278,453 | 15.6 | 16.3 | 15.7 | 0.6 |
| VIA Airlines | 371 | 0 | 371 | 0.0 | 2,878 | 0 | 2,878 | 0.0 | 0.0 | 0.0 | 0.0 |
| Virgin America | 12,910 | 13,986 | -1,076 | -7.7 | 143,638 | 157,506 | -13,868 | -8.8 | 1.1 | 1.4 | -0.3 |
| Xtra Airways/Casino Express | 0 | 642 | -642 | -100.0 | 136 | 2,103 | -1,967 | -93.5 | 0.0 | 0.0 | 0.0 |
| Report Totals | 1,229,791 | 1,070,567 | 159,224 | 14.9% | 12,698,792 | 11,402,782 | 1,296,010 | 11.4% | | | |

Statistics Included in Report:

| | |
|---------------------------------------|--|
| Domestic Passengers: | Enplaned Revenue, Deplaned Revenue, Enplaned Non-Revenue, Deplaned Non-Revenue |
| International Passengers: | Enplaned Revenue, Deplaned Revenue, Enplaned Non-Revenue, Deplaned Non-Revenue |
| International Pre-Cleared Passengers: | Enplaned Revenue, Deplaned Revenue, Enplaned Non-Revenue, Deplaned Non-Revenue |
| South Terminal Domestic Passengers: | Enplaned Revenue, Deplaned Revenue, Enplaned Non-Revenue, Deplaned Non-Revenue |

Austin-Bergstrom International Airport

Summary Landing Report

Landing Type: Total

| Month | 2017 | | 2016 | | 2015 | | % Change 2017 - 2016 | | % Change 2016 - 2015 | |
|-----------------------------------|--------|---------------|--------|---------------|--------|---------------|----------------------|--------|----------------------|--------|
| | Count | Weight | Count | Weight | Count | Weight | Count | Weight | Count | Weight |
| January | 4,768 | 612,688,871 | 4,622 | 560,718,408 | 4,480 | 530,688,382 | 3.16% | 9.27% | 3.17% | 5.66% |
| February | 4,357 | 552,711,639 | 4,387 | 527,452,920 | 3,992 | 477,489,019 | -0.68% | 4.79% | 9.89% | 10.46% |
| March | 5,307 | 685,661,659 | 5,151 | 639,655,137 | 4,872 | 584,604,521 | 3.03% | 7.19% | 5.73% | 9.42% |
| April | 5,179 | 689,402,051 | 4,892 | 614,643,711 | 4,875 | 593,462,176 | 5.87% | 12.16% | 0.35% | 3.57% |
| May | 5,529 | 736,484,083 | 5,096 | 630,853,941 | 5,161 | 625,876,151 | 8.50% | 16.74% | -1.26% | 0.80% |
| June | 5,603 | 752,628,599 | 5,179 | 651,537,449 | 5,239 | 644,690,908 | 8.19% | 15.52% | -1.15% | 1.06% |
| July | 5,698 | 763,088,836 | 5,233 | 663,015,597 | 5,503 | 676,131,170 | 8.89% | 15.09% | -4.91% | -1.94% |
| August | 5,490 | 741,110,019 | 5,181 | 660,099,361 | 5,277 | 652,770,571 | 5.96% | 12.27% | -1.82% | 1.12% |
| September | 5,046 | 679,381,339 | 4,738 | 623,397,035 | 4,833 | 598,547,454 | 6.50% | 8.98% | -1.97% | 4.15% |
| October | 5,448 | 743,973,610 | 4,923 | 649,182,343 | 4,891 | 611,952,269 | 10.66% | 14.60% | 0.65% | 6.08% |
| November | 5,289 | 718,179,948 | 4,775 | 624,303,554 | 4,815 | 605,234,834 | 10.76% | 15.04% | -0.83% | 3.15% |
| December | | | 4,893 | 629,611,090 | 5,100 | 633,215,540 | | | -4.06% | -0.57% |
| Totals for Selected Period | 57,714 | 7,675,310,654 | 54,177 | 6,844,859,456 | 53,938 | 6,601,447,455 | 6.53% | 12.13% | 0.44% | 3.69% |
| Yearly Totals | 57,714 | 7,675,310,654 | 59,070 | 7,474,470,546 | 59,038 | 7,234,662,995 | | | 0.05% | 3.31% |