

Austin-Bergstrom International Airport

Aviation Activity Report

Calendar Year 2017 vs 2016

	02/2017	02/2016	Percent Change	01/2017 - 02/2017	01/2016 - 02/2016	Percent Change
Passenger Activity						
Domestic Enplaned Revenue	421,805	399,645	5.54	852,420	810,871	5.12
Domestic Deplaned Revenue	422,699	403,220	4.83	865,430	825,323	4.86
International Enplaned Revenue	8,487	6,459	31.40	18,409	14,650	25.66
International Deplaned Revenue	8,517	7,319	16.37	19,585	16,451	19.05
Domestic Enplaned Non-Revenue	10,423	10,123	2.96	22,369	20,290	10.25
Domestic Deplaned Non-Revenue	10,239	9,424	8.65	21,395	19,143	11.76
International Enplaned Non-Revenue	69	115	-40.00	129	191	-32.46
International Deplaned Non-Revenue	81	101	-19.80	135	171	-21.05
Intl Enplaned Pre-Cleared Revenue	1,384	1,199	15.43	3,024	2,501	20.91
Intl Deplaned Pre-Cleared Revenue	1,572	1,554	1.16	3,283	3,098	5.97
Intl Enplaned Pre-Cleared Non-Revenue	21	22	-4.55	46	38	21.05
Intl Deplaned Pre-Cleared Non-Revenue	28	32	-12.50	46	46	0.00
Passenger Totals	885,325	839,213	5.49	1,806,271	1,712,773	5.46
<i>Enplaned Passenger Totals</i>	<i>442,189</i>	<i>417,563</i>	<i>5.90</i>	<i>896,397</i>	<i>848,541</i>	<i>5.64</i>
<i>Deplaned Passenger Totals</i>	<i>443,136</i>	<i>421,650</i>	<i>5.10</i>	<i>909,874</i>	<i>864,232</i>	<i>5.28</i>
<i>Domestic Passenger Totals</i>	<i>865,166</i>	<i>822,412</i>	<i>5.20</i>	<i>1,761,614</i>	<i>1,675,627</i>	<i>5.13</i>
<i>International Passenger Totals</i>	<i>20,159</i>	<i>16,801</i>	<i>19.99</i>	<i>44,657</i>	<i>37,146</i>	<i>20.22</i>

CURRENT PASSENGER RECORD = 1,165,811 RECORD SET = JULY 2015

Aircraft Operations

Air Carrier	8,542	8,525	0.20	17,864	17,510	2.02
Commuter & Air Taxi	1,220	1,106	10.31	2,315	2,227	3.95
Military	828	872	-5.05	1,732	1,617	7.11
General Aviation						
Itinerant	4,038	4,120	-1.99	8,244	7,910	4.22
Local	184	358	-48.60	318	580	-45.17
Total G.A.	4,222	4,478	-5.72	8,562	8,490	0.85
Total Operations	14,812	14,981	-1.13	30,473	29,844	2.11

Austin-Bergstrom International Airport

Aviation Activity Report

Calendar Year 2017 vs 2016

	02/2017	02/2016	Percent Change	01/2017 - 02/2017	01/2016 - 02/2016	Percent Change
<u>Cargo Activity</u>						
Mail						
Domestic Enplaned Mail	172,583	108,743	58.71	349,527	246,725	41.67
Domestic Deplaned Mail	272,751	188,261	44.88	548,369	434,051	26.34
International Enplaned Mail	0	0	0.00	0	0	0.00
International Deplaned Mail	0	0	0.00	0	0	0.00
Mail Totals	445,334	297,004	49.94	897,896	680,776	31.89
Cargo						
Domestic Enplaned Cargo	4,503,768	4,785,169	-5.88	8,974,971	9,780,541	-8.24
Domestic Deplaned Cargo	5,932,332	5,192,407	14.25	12,371,298	10,456,311	18.31
International Enplaned Cargo	614,518	233,645	163.01	1,237,935	418,484	195.81
International Deplaned Cargo	220,929	139,218	58.69	539,731	235,118	129.56
Cargo Totals	11,271,547	10,350,439	8.90	23,123,935	20,890,454	10.69
Belly Freight						
Domestic Enplaned Belly Freight	194,125	179,805	7.96	392,048	438,343	-10.56
Domestic Deplaned Belly Freight	423,275	387,764	9.16	802,421	804,128	-0.21
International Enplaned Belly Freight	299,684	216,082	38.69	446,140	427,223	4.43
International Deplaned Belly Freight	906,184	517,299	75.18	1,461,257	875,100	66.98
Belly Freight Totals	1,823,268	1,300,950	40.15	3,101,866	2,544,794	21.89
Cargo Totals (Mail, Cargo, Belly Freight)	13,540,149	11,948,393	13.32	27,123,697	24,116,024	12.47
<i>Enplaned Cargo Totals</i>	<i>5,784,678</i>	<i>5,523,444</i>	<i>4.73</i>	<i>11,400,621</i>	<i>11,311,316</i>	<i>0.79</i>
<i>Deplaned Cargo Totals</i>	<i>7,755,471</i>	<i>6,424,949</i>	<i>20.71</i>	<i>15,723,076</i>	<i>12,804,708</i>	<i>22.79</i>
<i>Domestic Cargo Totals</i>	<i>11,498,834</i>	<i>10,842,149</i>	<i>6.06</i>	<i>23,438,634</i>	<i>22,160,099</i>	<i>5.77</i>
<i>International Cargo Totals</i>	<i>2,041,315</i>	<i>1,106,244</i>	<i>84.53</i>	<i>3,685,063</i>	<i>1,955,925</i>	<i>88.41</i>

CURRENT CARGO RECORD = 40,215,518

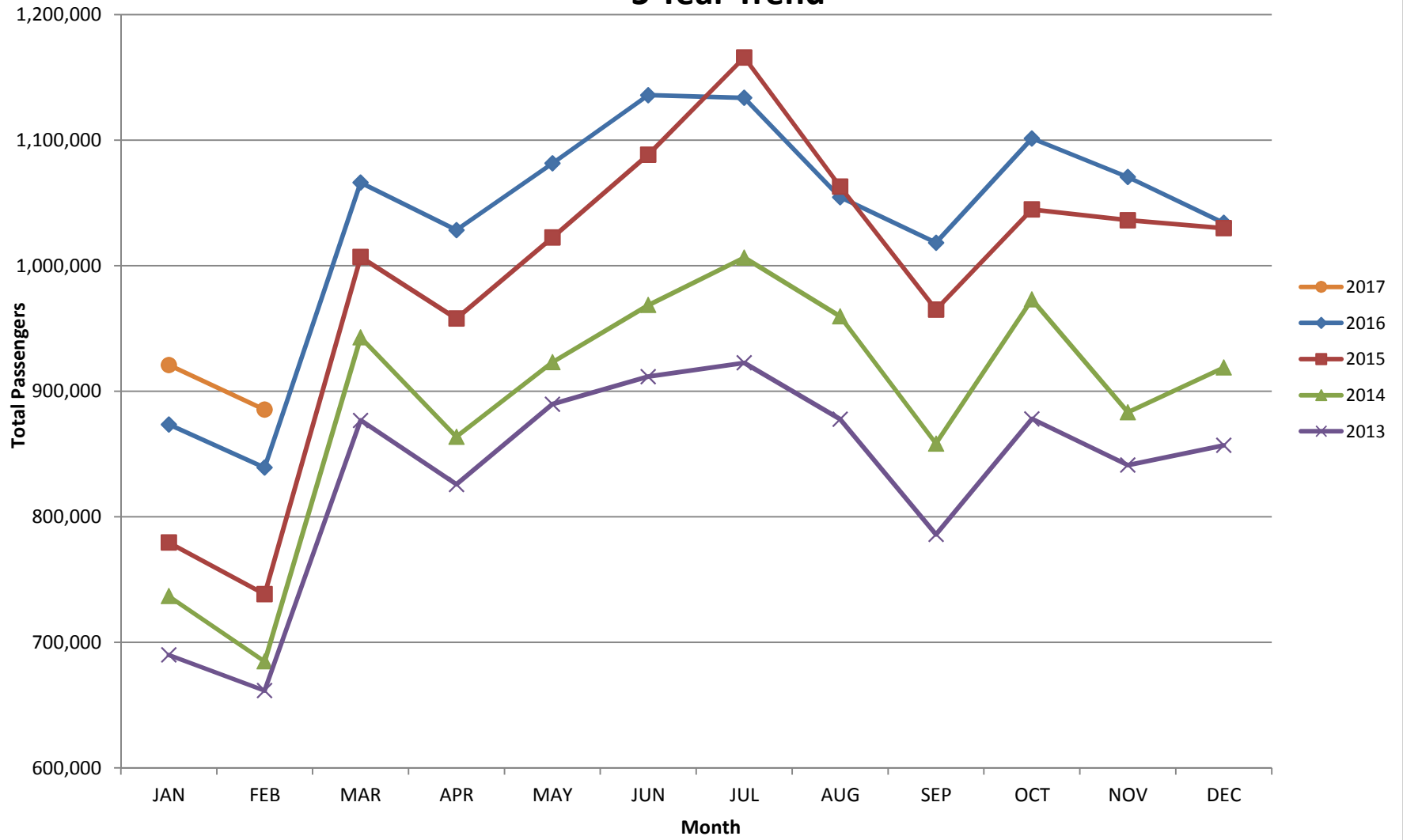
RECORD SET = MARCH 2001

AUS – Airline Codes
February 2017

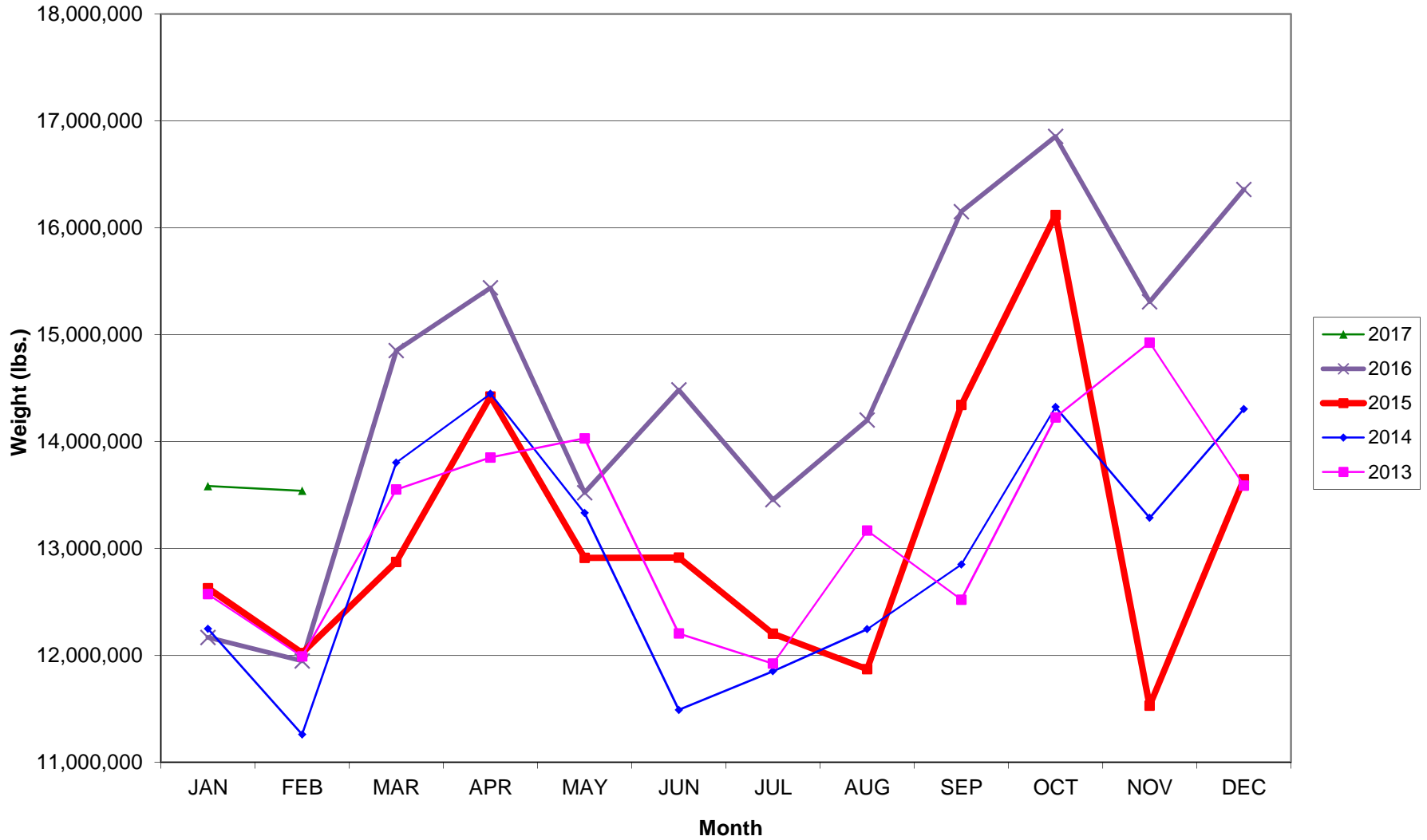
<u>Code</u>	<u>Carrier</u>
AM	AeroMexico Airlines
AC	Air Canada
AS	Alaska Airlines, Inc.
G4	Allegiant Air, LLC
AA	American Airlines, Inc.
BA	British Airways Plc
DL	Delta Airlines
F9	Frontier Airlines
B6	JetBlue Airways Corp.
P1	Public Charters, Inc. dba Texas Sky
WN	Southwest Airlines
SY	Sun Country Airlines/ MN Airlines, LLC
WQ	Swift Air, LLC
UA	United Airlines, Inc.
VX	Virgin America Inc.
Y4	Volaris/Concesionaria Vuela Compañía de Aviación, S.A.P.I. de C.V.
XP	Xtra Airways

AUSTIN PASSENGER TRAFFIC

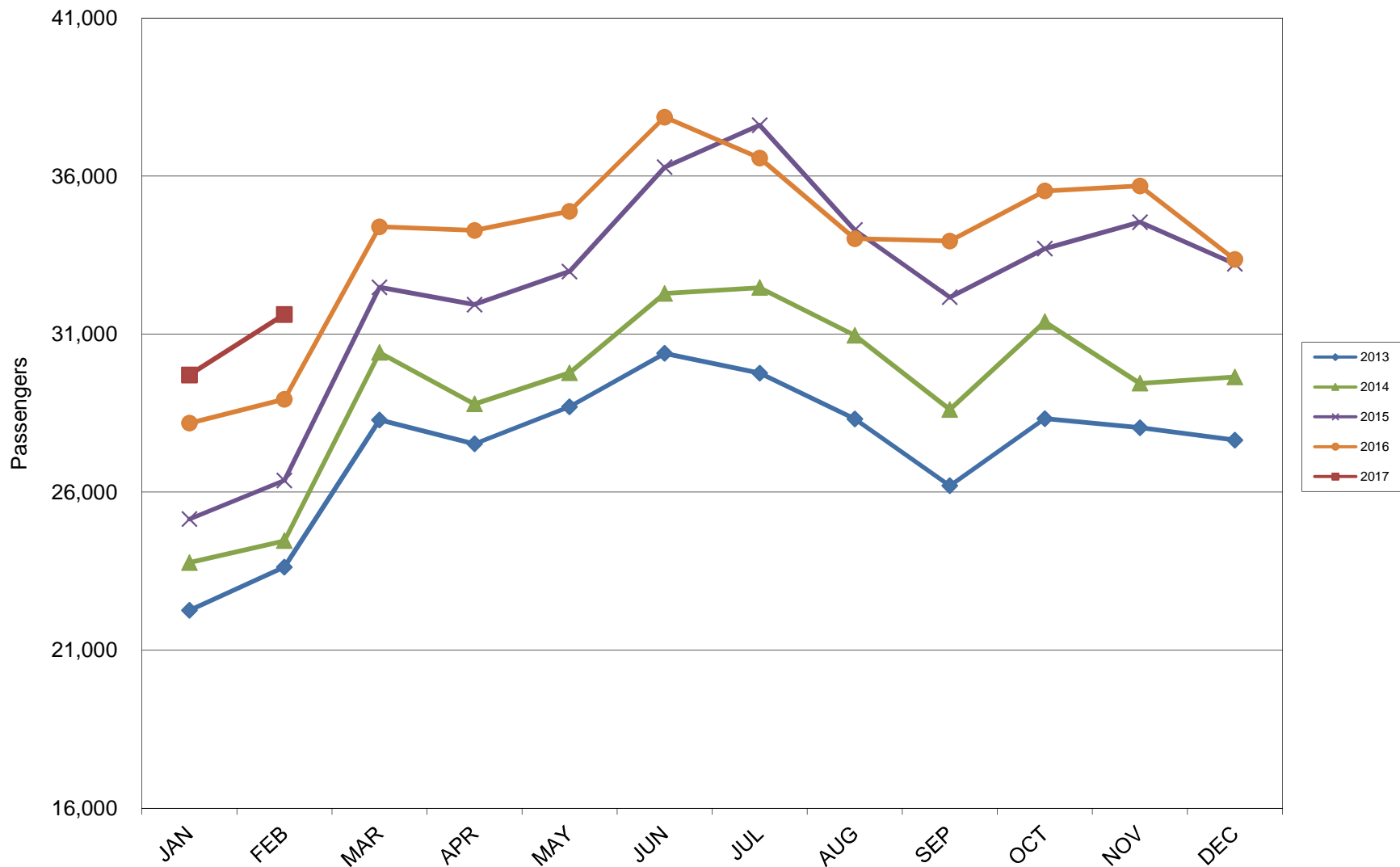
5 Year Trend



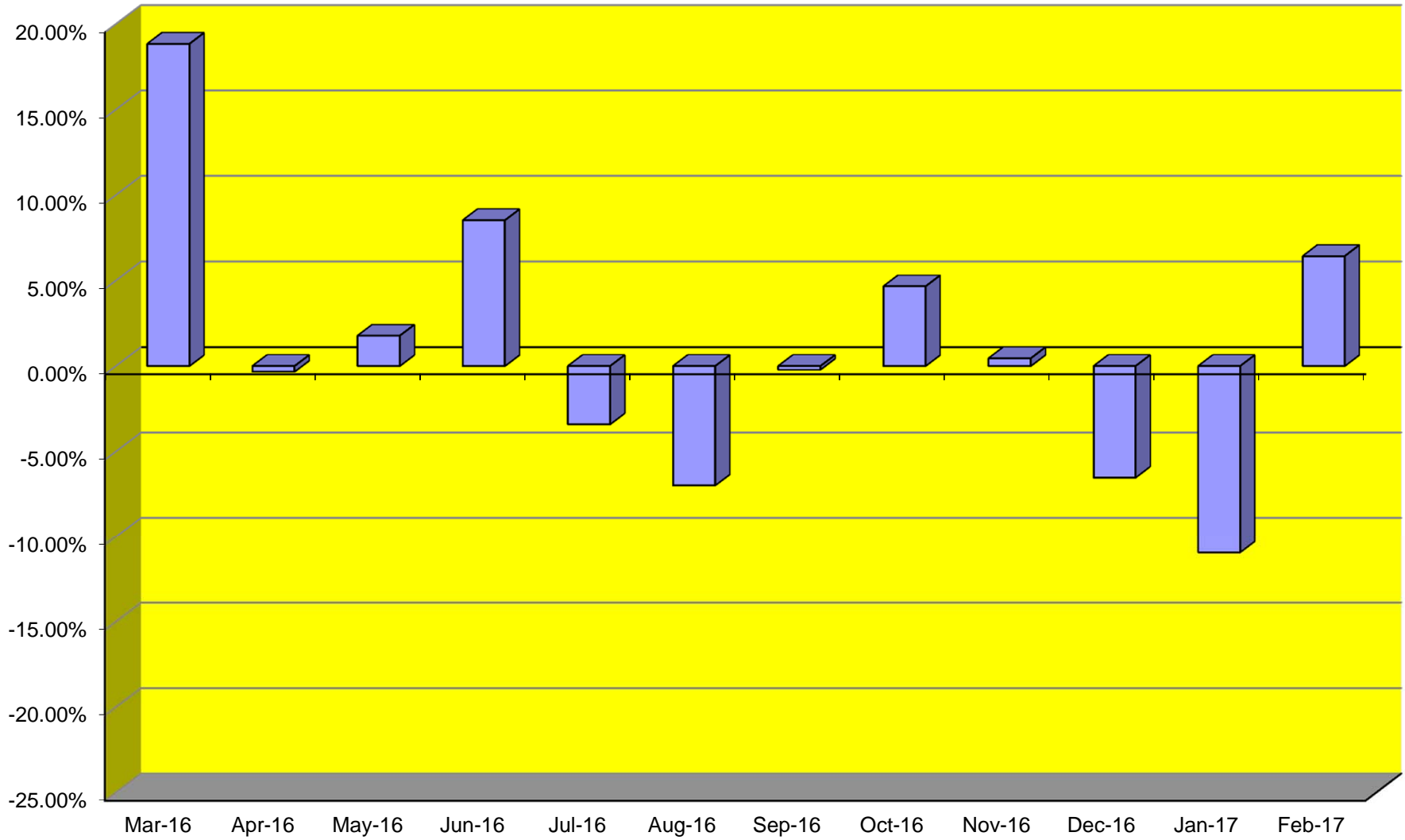
TOTAL CARGO POUNDAGE - AUSTIN, TEXAS



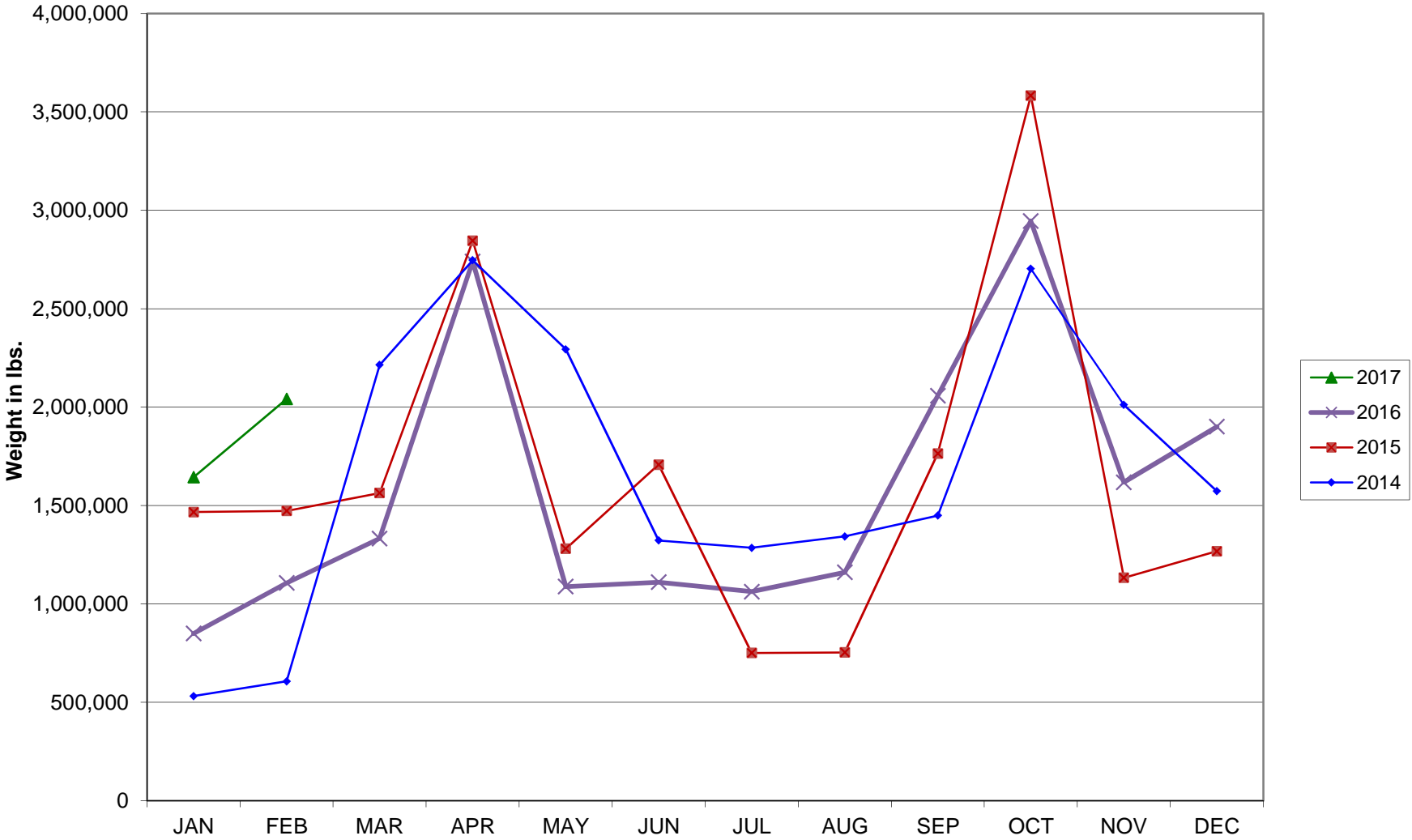
Average Daily Passengers



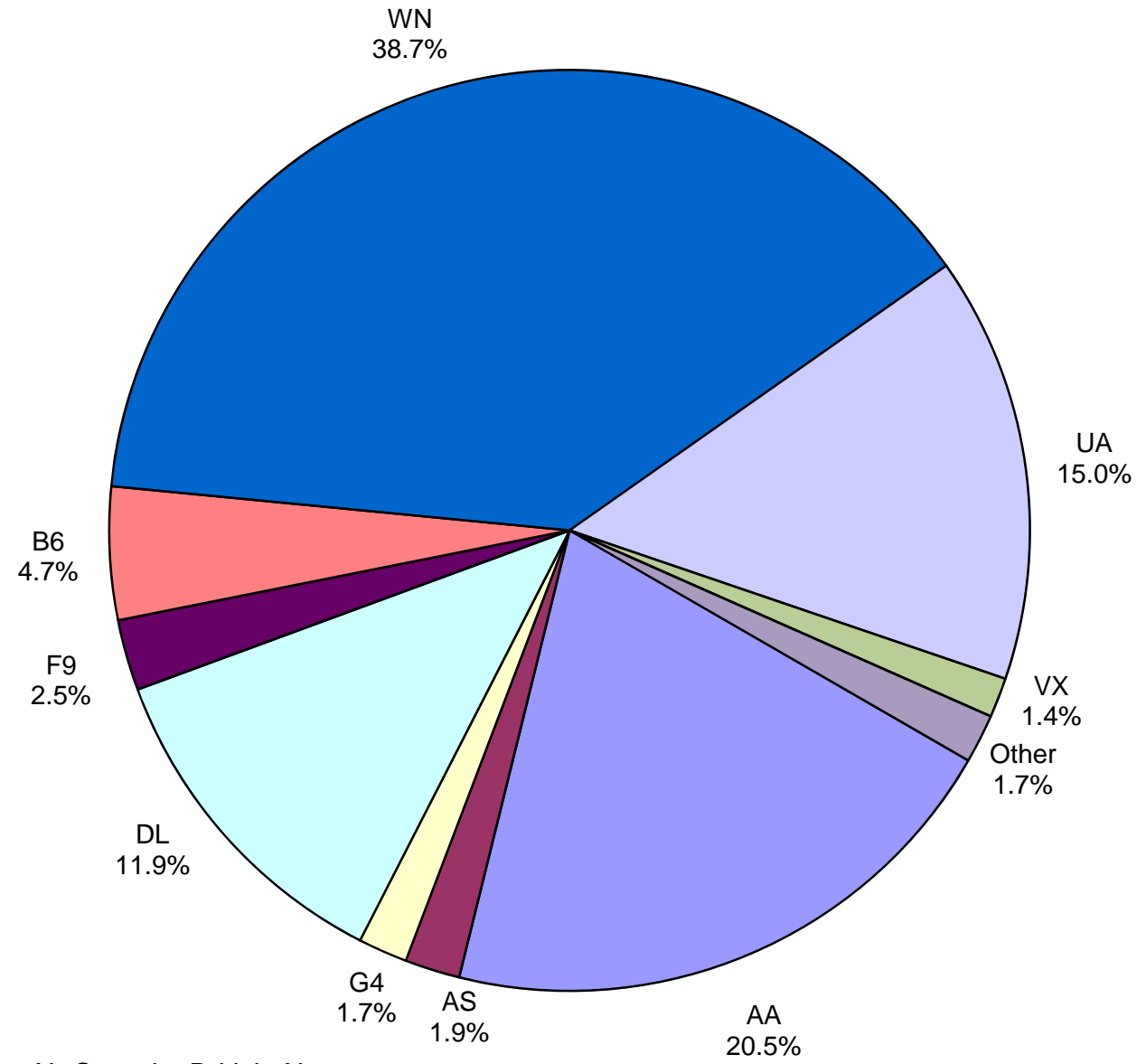
Monthly % Change in Average Daily Passengers



HISTORY OF INTERNATIONAL AIR CARGO



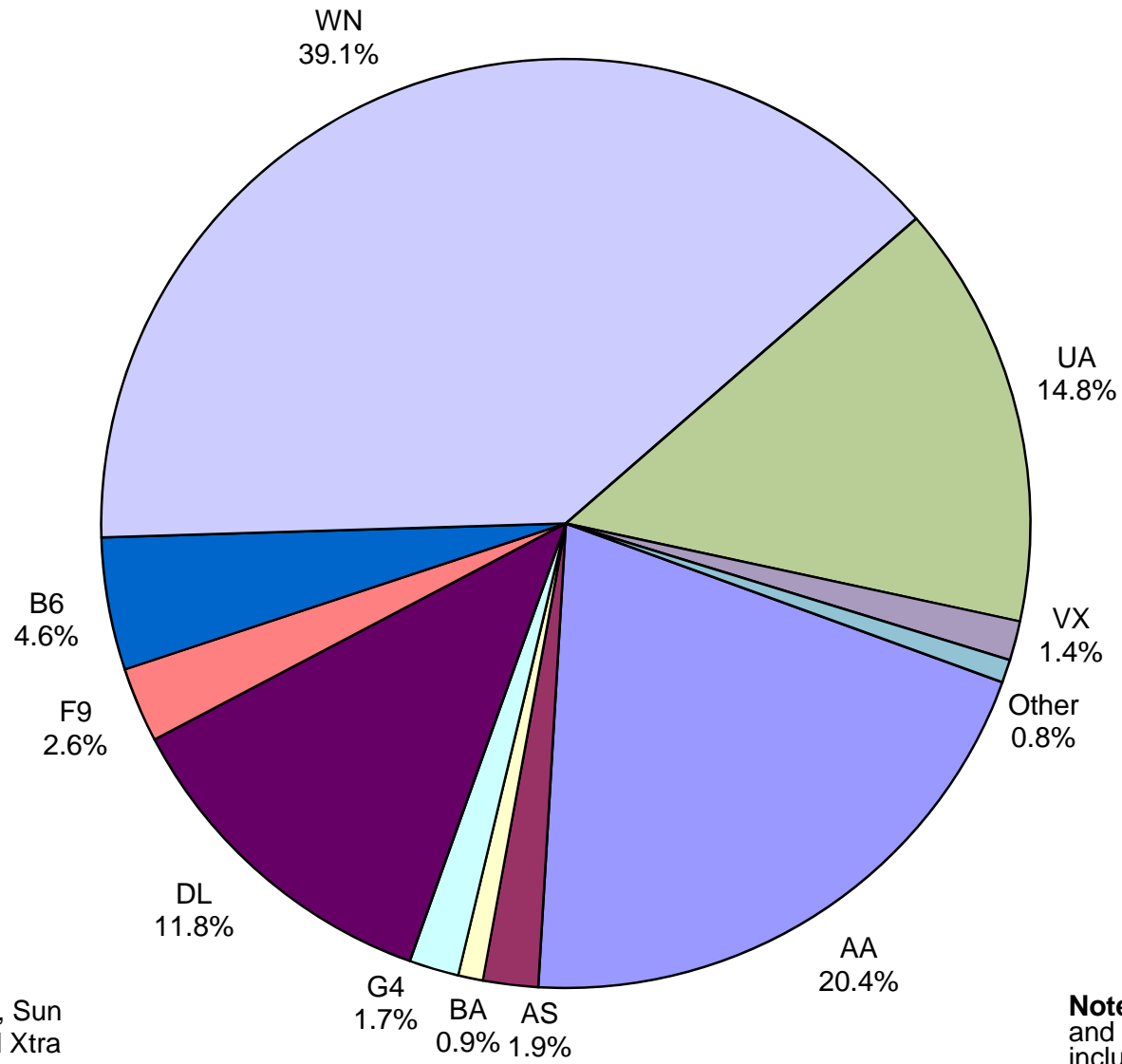
**Total Passengers
February 2017**



Other: Aeromexico, Air Canada, British Airways, Sun Country, Swift Air, LLC, Texas Sky, Volaris and Xtra Airways

Note: American, Delta and United Airlines percentages include Affiliates.

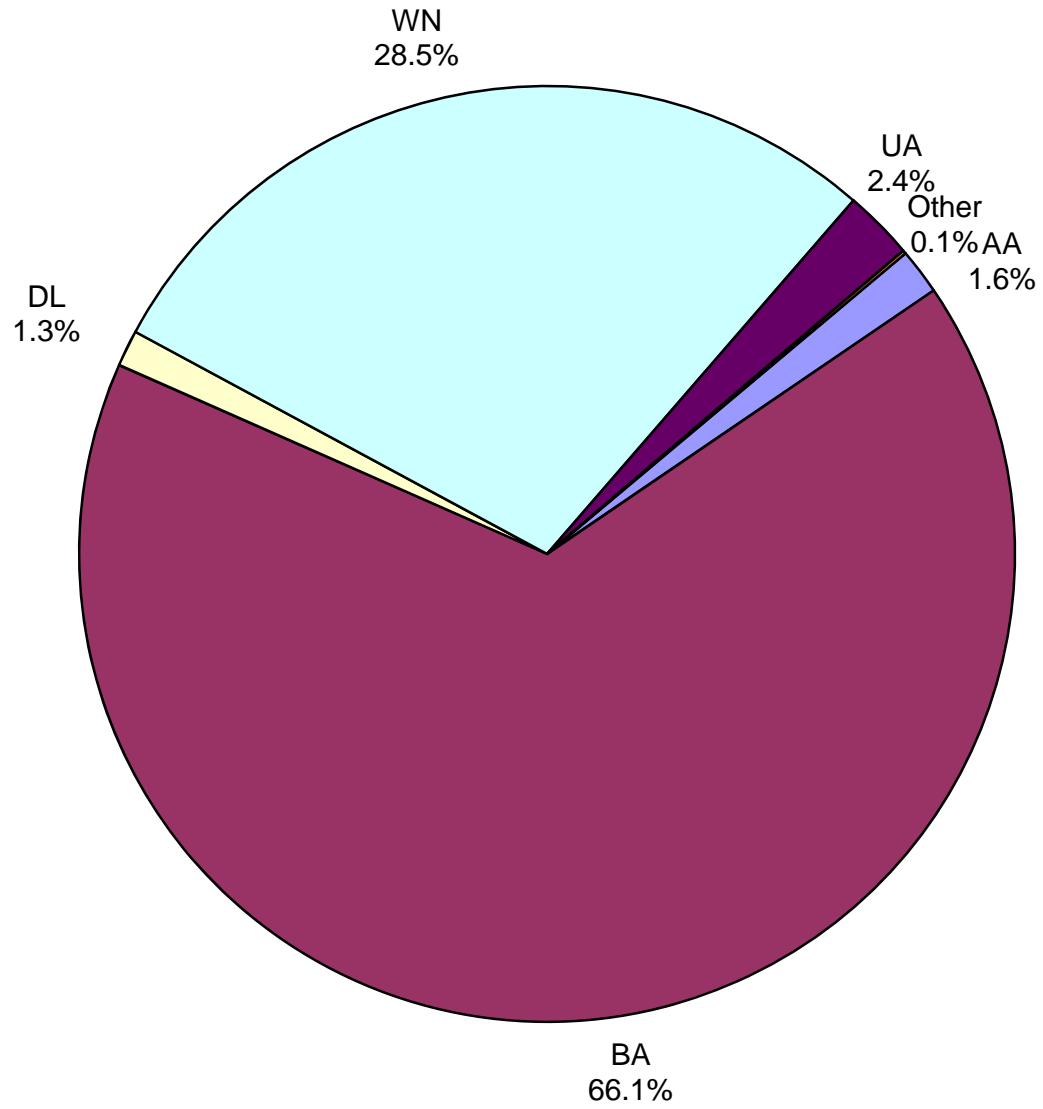
**All Passenger Carriers
Enplaned Revenue Passengers
February 2017**



Other: Aeromexico, Air Canada, Sun Country, Texas Sky, Volaris and Xtra Airways

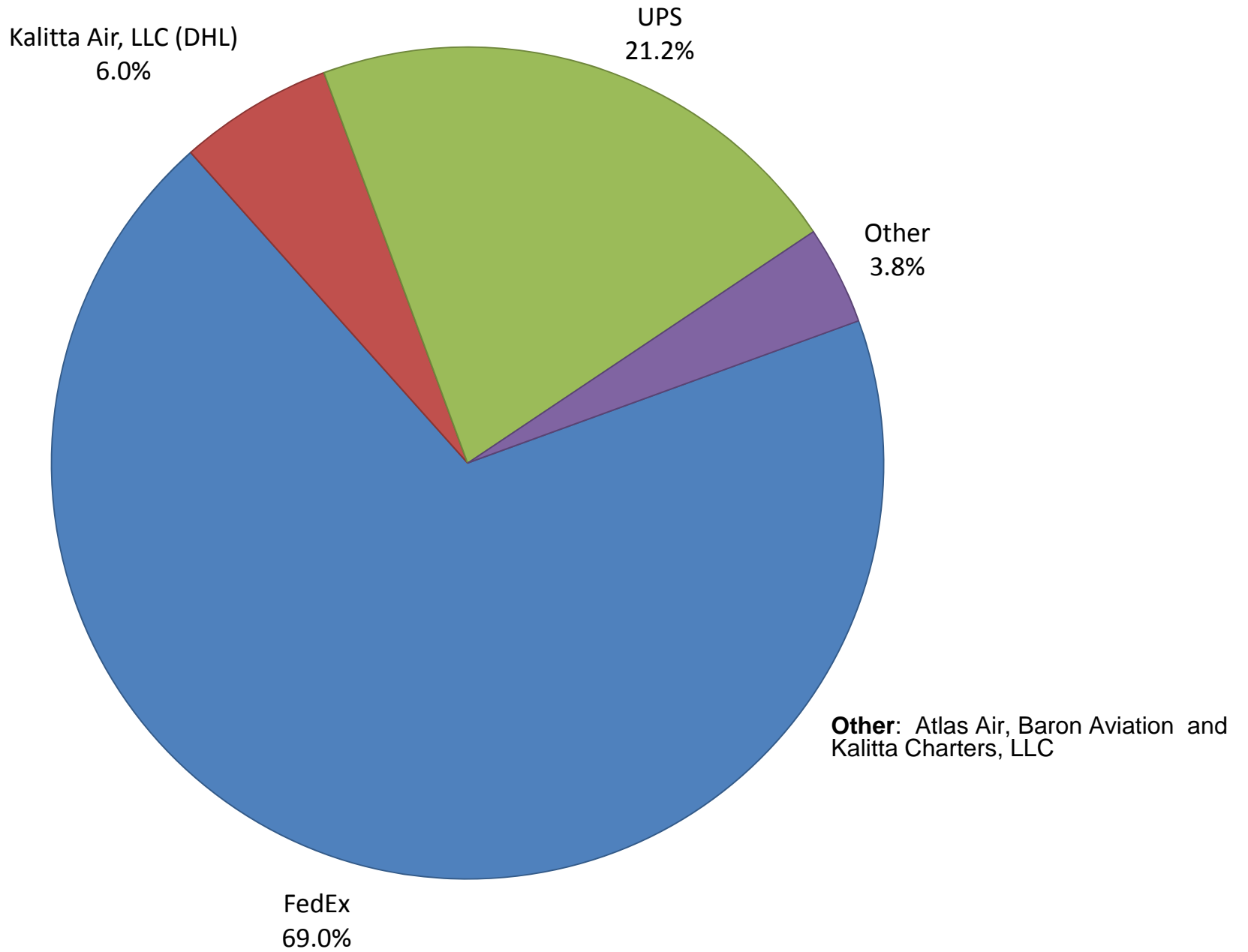
Note: American/US Airways, Delta and United Airlines percentages include Affiliates.

**AUS Belly Freight Market Shares
February 2017**

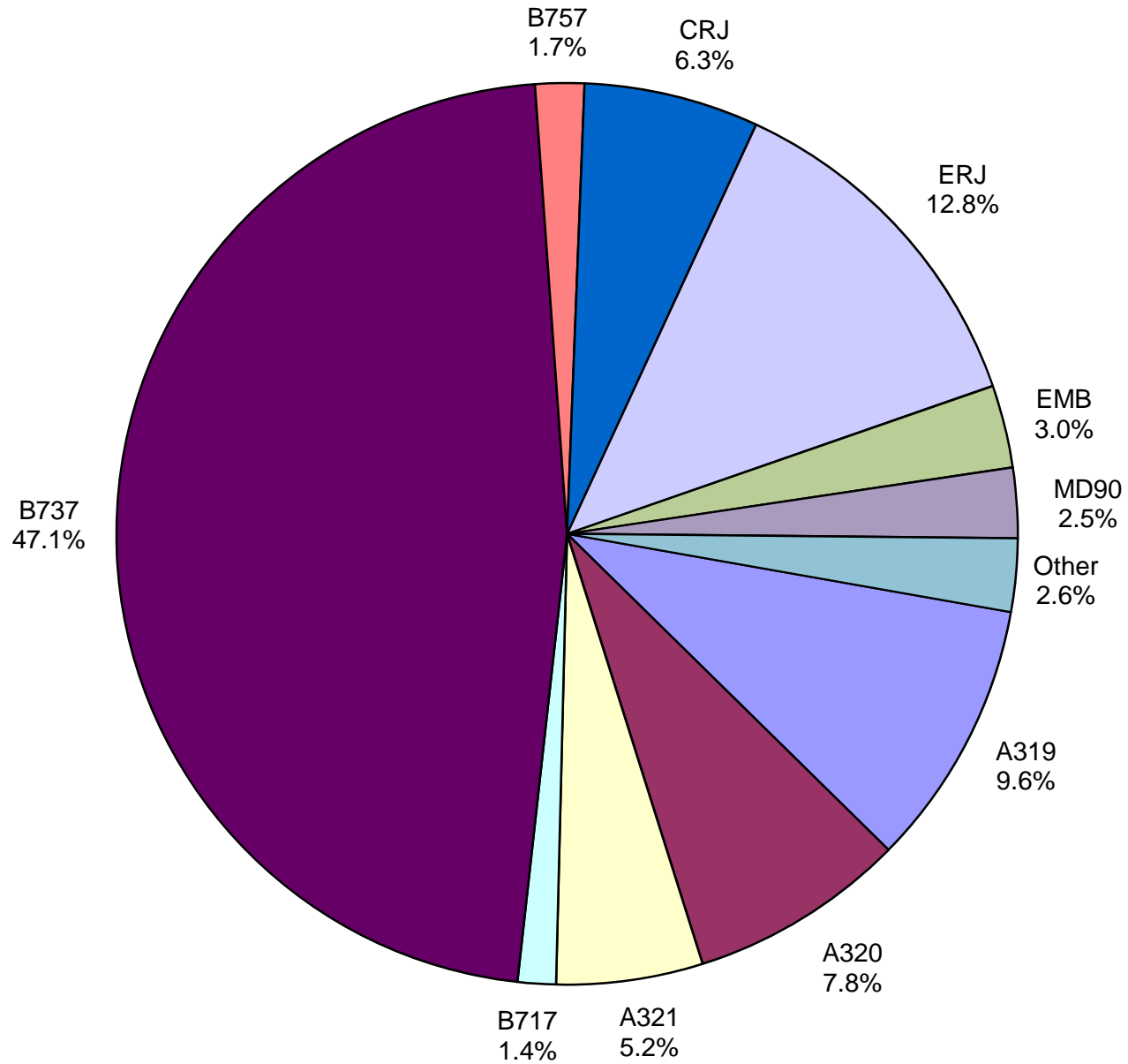


Other = Alaska Airlines

Air Cargo Market Share February 2017

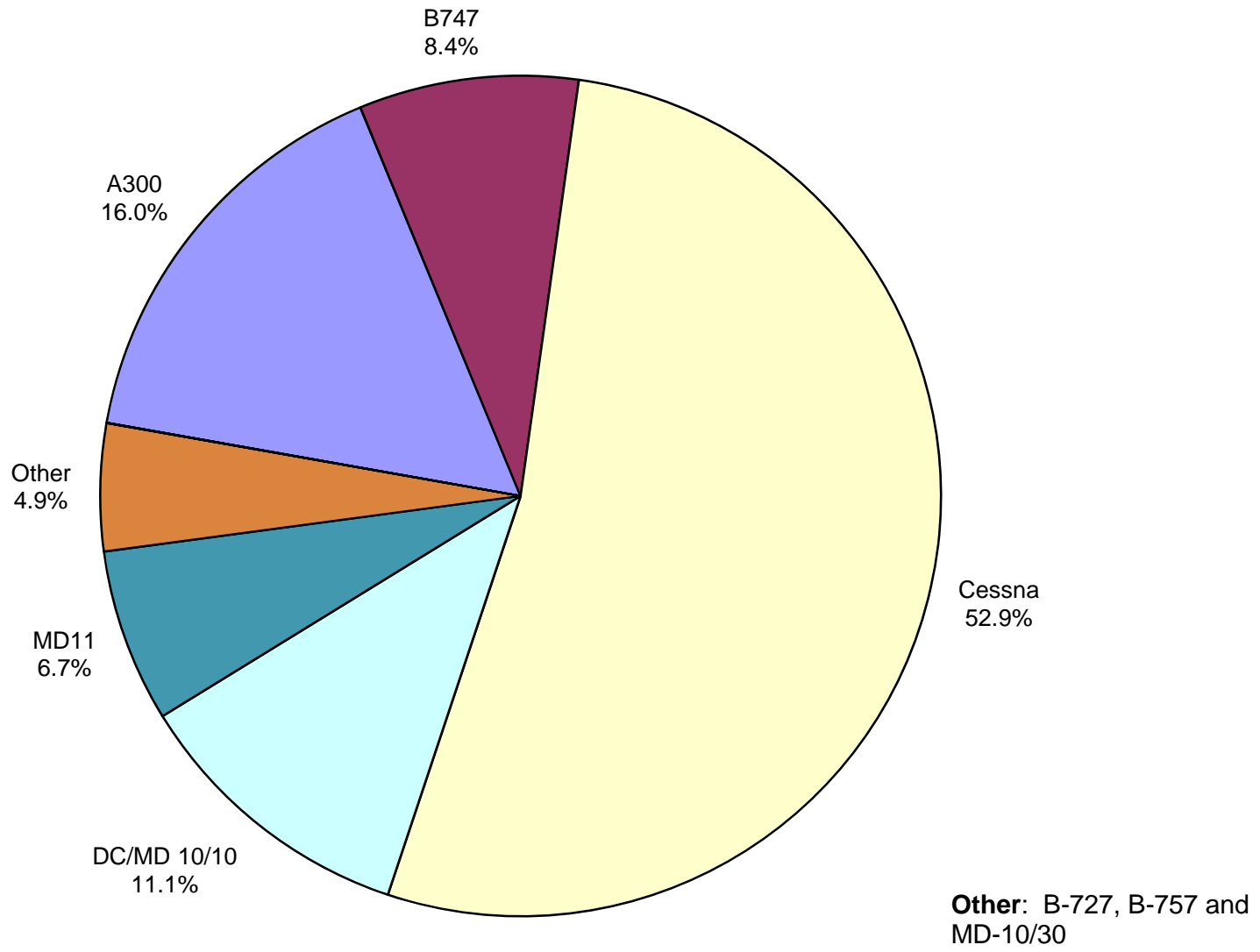


**AUS Scheduled Passenger Aircraft Fleet Mix
February 2017**



Other: B-787,
BAE-3200, BAE-4100,
MD-80, MD-83, MD-88
and WW-1124

**AUS Scheduled Cargo Aircraft Fleet Mix
February 2017**



Austin-Bergstrom International Airport

PAX Detail Report - February, 2017

Company	02/2017	02/2016	Period		YTD 2017	YTD 2016	YTD		2017 Share	2016 Share	Share Diff
			Difference	Change			Difference	Change			
AeroMexico Airlines/Aerovias de Mexico, S.A. de C.V.	2,531	0	2,531	0.0	5,463	0	5,463	0.0	0.3	0.0	0.3
Air Canada	3,005	2,807	198	7.1	6,399	5,683	716	12.6	0.4	0.3	0.0
Alaska Airlines, Inc.	17,131	12,721	4,410	34.7	34,526	26,033	8,493	32.6	1.9	1.5	0.4
Allegiant Air, LLC	15,280	10,513	4,767	45.3	27,836	19,015	8,821	46.4	1.5	1.1	0.4
American Airlines, Inc.	181,699	172,007	9,692	5.6	371,983	355,525	16,458	4.6	20.6	20.8	-0.2
British Airways Plc	7,824	7,444	380	5.1	17,701	17,316	385	2.2	1.0	1.0	0.0
Delta Air Lines	105,065	100,481	4,584	4.6	214,928	201,544	13,384	6.6	11.9	11.8	0.1
Frontier Airlines, Inc.	22,039	15,586	6,453	41.4	45,561	32,880	12,681	38.6	2.5	1.9	0.6
JetBlue Airways Corporation	41,251	38,230	3,021	7.9	85,003	77,040	7,963	10.3	4.7	4.5	0.2
Public Charters, Inc., d/b/a Texas Sky	133	111	22	19.8	259	231	28	12.1	0.0	0.0	0.0
Southwest Airlines	342,814	337,779	5,035	1.5	700,485	690,680	9,805	1.4	38.8	40.3	-1.5
Sun Country Airlines/ MN Airlines, LLC	555	392	163	41.6	1,110	1,014	96	9.5	0.1	0.1	0.0
Swift Air, LLC	136	0	136	0.0	136	0	136	0.0	0.0	0.0	0.0
United Airlines, Inc.	132,476	127,960	4,516	3.5	267,474	261,182	6,292	2.4	14.8	15.2	-0.4
Virgin America Inc.	12,395	13,041	-646	-5.0	24,233	24,347	-114	-0.5	1.3	1.4	-0.1
Volaris	855	0	855	0.0	3,038	0	3,038	0.0	0.2	0.0	0.2
Xtra Airways/Casino Express	136	141	-5	-3.5	136	283	-147	-51.9	0.0	0.0	0.0
Report Totals	885,325	839,213	46,112	5.5%	1,806,271	1,712,773	93,498	5.5%			

Statistics Included in Report:

Domestic Passengers:	Enplaned Revenue, Deplaned Revenue, Enplaned Non-Revenue, Deplaned Non-Revenue
International Passengers:	Enplaned Revenue, Deplaned Revenue, Enplaned Non-Revenue, Deplaned Non-Revenue
International Pre-Cleared Passengers:	Enplaned Revenue, Deplaned Revenue, Enplaned Non-Revenue, Deplaned Non-Revenue

Austin-Bergstrom International Airport

Summary Landing Report

Landing Type: Total

Month	2017		2016		2015		% Change 2017 - 2016		% Change 2016 - 2015	
	Count	Weight	Count	Weight	Count	Weight	Count	Weight	Count	Weight
January	4,768	612,688,871	4,622	560,718,408	4,480	530,688,382	3.16%	9.27%	3.17%	5.66%
February	4,357	552,711,639	4,387	527,452,920	3,992	477,489,019	-0.68%	4.79%	9.89%	10.46%
March			5,151	639,655,137	4,872	584,604,521			5.73%	9.42%
April			4,892	614,643,711	4,875	593,462,176			0.35%	3.57%
May			5,096	630,853,941	5,161	625,876,151			-1.26%	0.80%
June			5,179	651,537,449	5,239	644,690,908			-1.15%	1.06%
July			5,233	663,015,597	5,503	676,131,170			-4.91%	-1.94%
August			5,181	660,099,361	5,277	652,770,571			-1.82%	1.12%
September			4,738	623,397,035	4,833	598,547,454			-1.97%	4.15%
October			4,923	649,182,343	4,891	611,952,269			0.65%	6.08%
November			4,775	624,303,554	4,815	605,234,834			-0.83%	3.15%
December			4,893	629,611,090	5,100	633,215,540			-4.06%	-0.57%
Totals for Selected Period	9,125	1,165,400,510	9,009	1,088,171,328	8,472	1,008,177,401	1.29%	7.10%	6.34%	7.93%
Yearly Totals	9,125	1,165,400,510	59,070	7,474,470,546	59,038	7,234,662,995			0.05%	3.31%